

V&V Reference Report

L2 ASCDS Version : 8.4.4

Observation 13618 - L2 Version 1
Chandra X-Ray Center

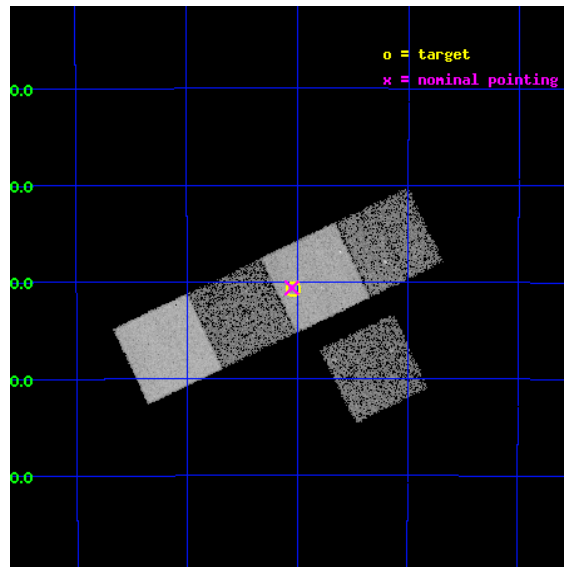
L2 Processing Date : May 9 2012

Contents

1	Front	2
2	OBI	3
2.1	OBI	3
2.1.1	Images	3
2.1.2	Bias	3
2.1.3	Parameters	4
2.1.4	Events	4
2.2	Compared Parameters	5
2.3	Aspect	6
2.4	Star Slots	9
2.4.1	Slot 3	9
2.4.2	Slot 4	10
2.4.3	Slot 5	11
2.4.4	Slot 6	12
2.4.5	Slot 7	13
2.5	FID Slots	14
2.5.1	Slot 0	14
2.5.2	Slot 1	15
2.5.3	Slot 2	16
A	Summary	17
A.1	Status	17
A.2	Comments	17

1 Front

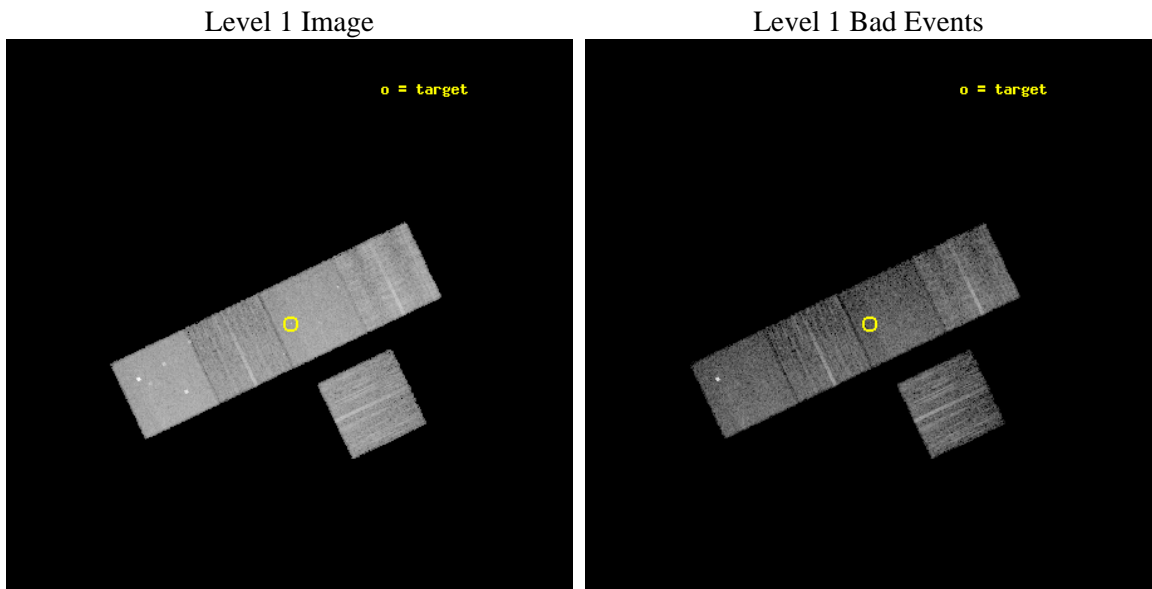
seq_num	200772	Sequence number
obs_id	13618	Observation id
title	The X-ray puzzle of late B and early A stars	Proposal title
observer	Dr. Jan Robrade	Principal investigator
object	HD 125823	Source name
dtcycle	0	
cycle	P	events from which exps? Prim/Second/Both
ra_targ	215.759167	Observer's specified target RA [deg]
dec_targ	-39.511833	Observer's specified target Dec [deg]
ra_nom	215.76249113341	Nominal RA [deg]
dec_nom	-39.510222161685	Nominal Dec [deg]
roll_nom	334.53748571873	Nominal Roll [deg]
revision	1	Processing version of data
ontime	10062.600077391	Sum of GTIs [s]
livetime	9931.1247994012	Livetime [s]
ontime3	10062.600077391	Sum of GTIs [s]
ontime5	10062.600077391	Sum of GTIs [s]
ontime6	10062.600077391	Sum of GTIs [s]
ontime7	10062.600077391	Sum of GTIs [s]
ontime8	10062.600077391	Sum of GTIs [s]
l2events	98259	Number of level 2 events



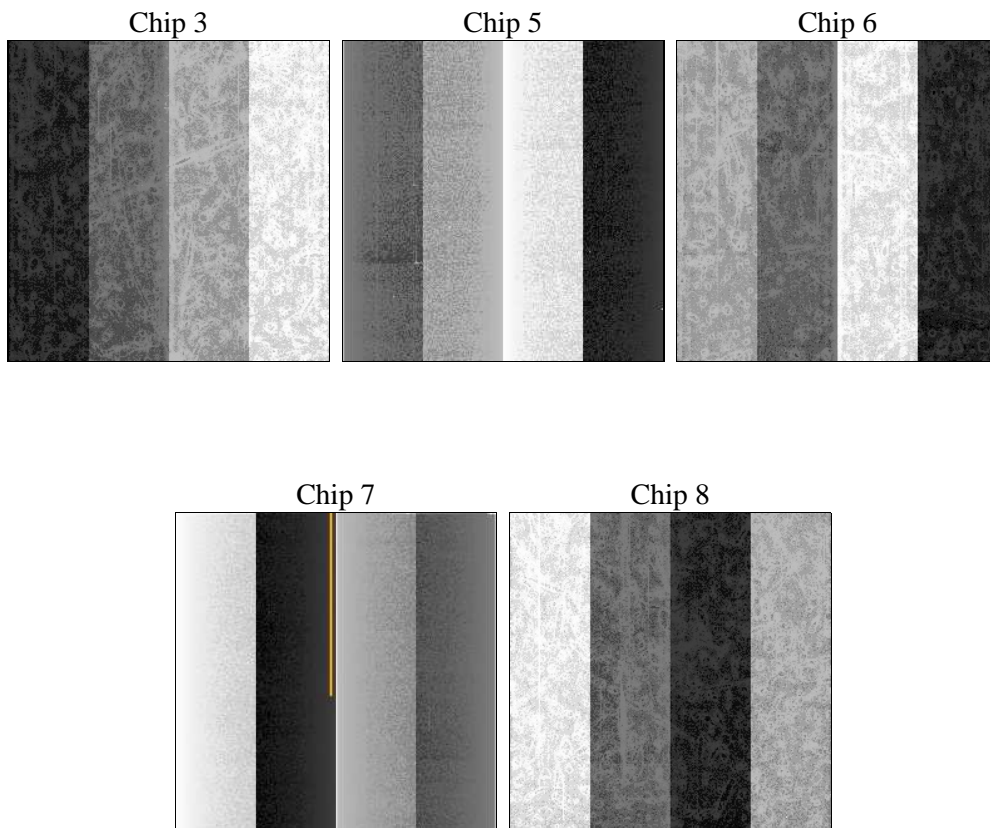
2 OBI

2.1 OBI

2.1.1 Images



2.1.2 Bias



2.1.3 Parameters

obi_num	0	Obi number	sched_exp_time	10000.000000	[s] Scheduled observation exposure time
ascdsver	8.4.4	Processing system revision	ontime	10062.600077391	Sum of GTIs [s]
caldsver	4.4.9	 	ontime3	10062.600077391	Sum of GTIs [s]
date	2012-05-09T21:11:21	Date and time of file creation	ontime5	10062.600077391	Sum of GTIs [s]
revision	1	Processing version of data	ontime6	10062.600077391	Sum of GTIs [s]
			ontime7	10062.600077391	Sum of GTIs [s]
			ontime8	10062.600077391	Sum of GTIs [s]
			l1events	378632	Number of level 1 events

2.1.4 Events

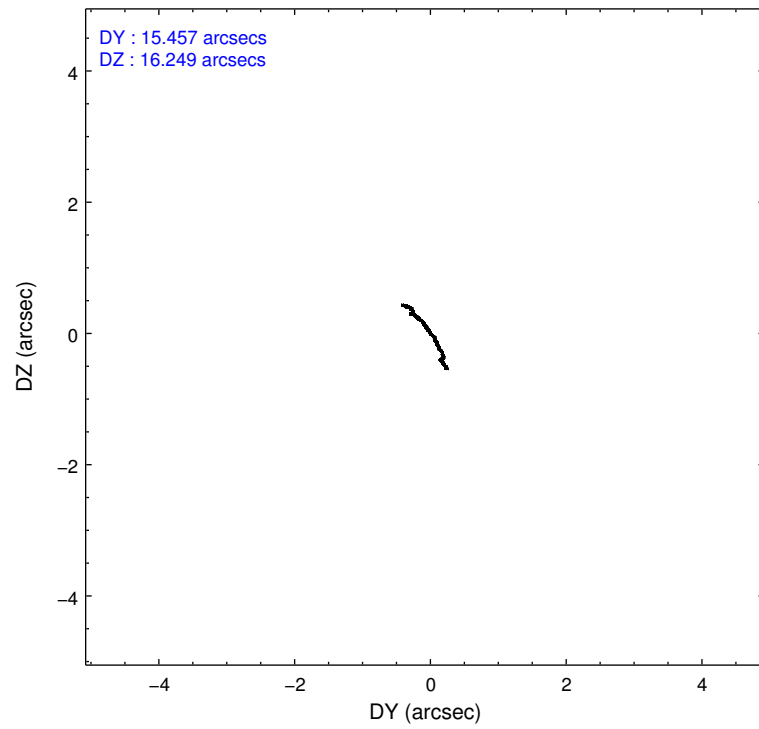
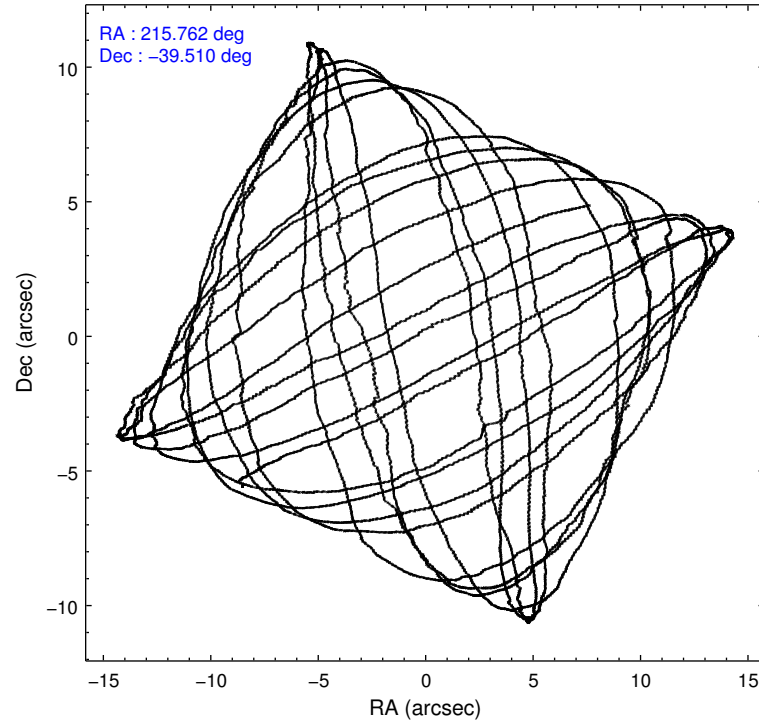
	ccd 3	ccd 5	ccd 6	ccd 7	ccd 8
level 1 events	59853	99500	57613	78988	82678
rejected events	53218	51094	50244	43952	60814
rejected %	88%	51%	87%	55%	73%

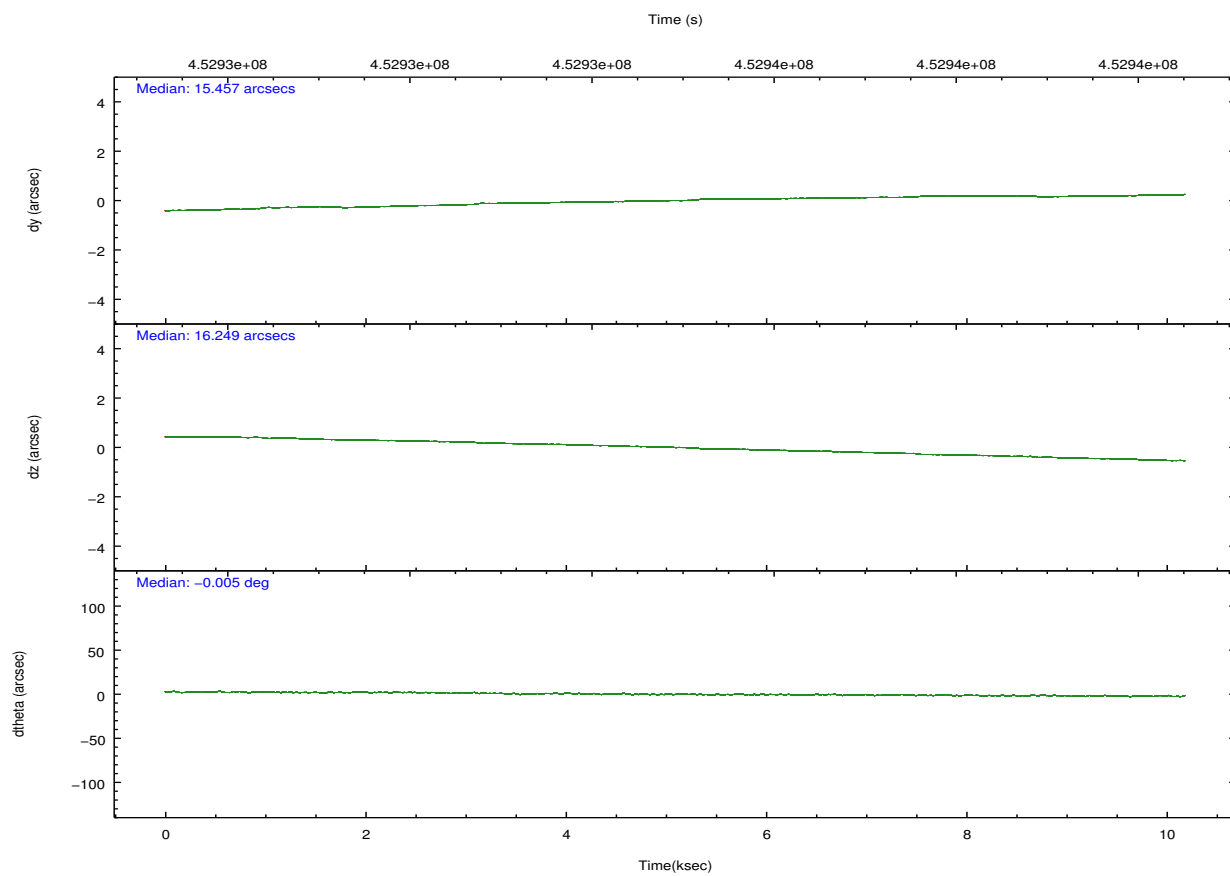
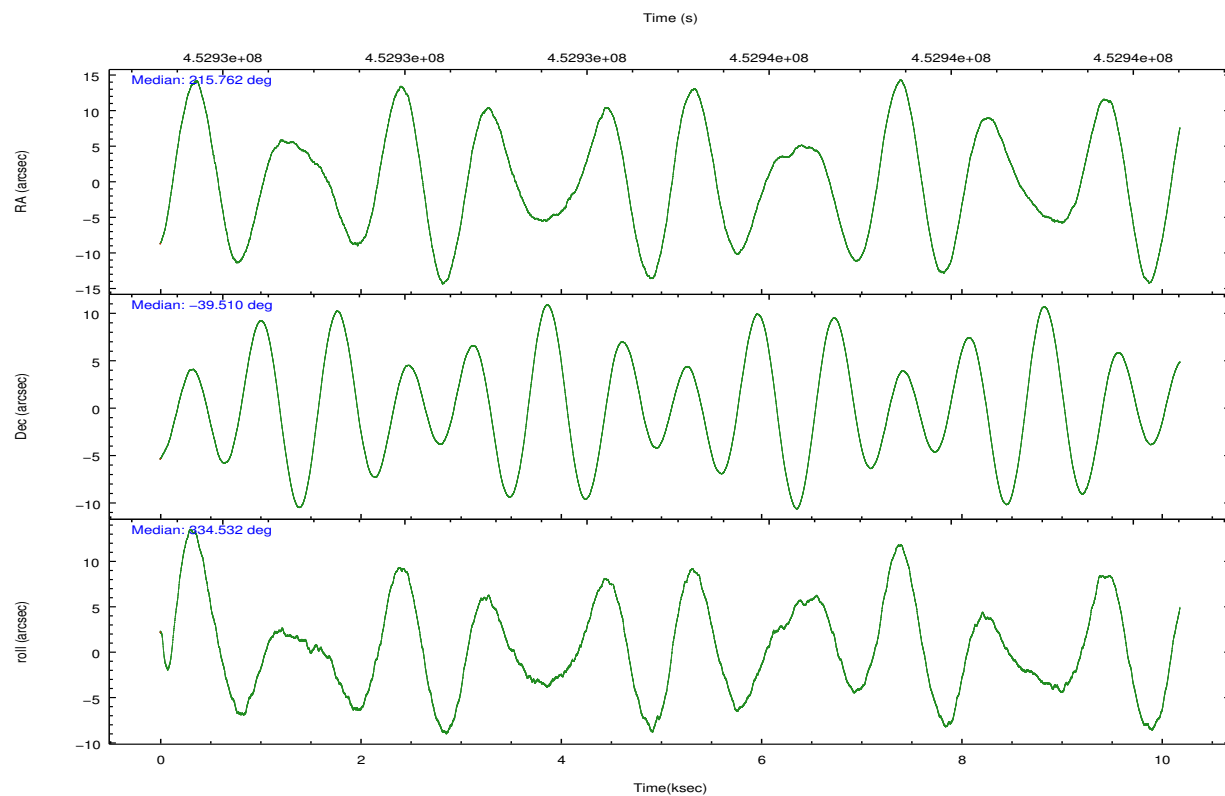
	ccd 3	ccd 5	ccd 6	ccd 7	ccd 8
grade 0 events	2390	5361	2703	3351	6353
	3%	5%	4%	4%	7%
grade 1 events	31	144	41	110	61
	0%	0%	0%	0%	0%
grade 2 events	1492	14751	1672	7173	5029
	2%	14%	2%	9%	6%
grade 3 events	702	1735	701	3052	2420
	1%	1%	1%	3%	2%
grade 4 events	721	1582	717	2950	2167
	1%	1%	1%	3%	2%
grade 5 events	2895	7459	3019	8132	4303
	4%	7%	5%	10%	5%
grade 6 events	1334	24991	1577	18531	5899
	2%	25%	2%	23%	7%
grade 7 events	50288	43477	47183	35689	56446
	84%	43%	81%	45%	68%

2.2 Compared Parameters

Parameter	Planned	Actual	Parameter	Planned	Actual
Instrument	ACIS	ACIS	Obspar format version number	7	7
Detector	ACIS-35678	ACIS-35678	Obspar file type	PREDICTED	ACTUAL
Grating	NONE	NONE	Obspar update status	NONE	UPDATED
Data mode	FAINT	FAINT	CCD I0 on	N	N
Observation mode	POINTING	POINTING	CCD I1 on	N	N
[deg] Pointing RA	215.727198	215.7624911334119	CCD I2 on	N	N
[deg] Pointing Dec	-39.512752	-39.51022216168547	CCD I3 on	O2	Y
[deg] Pointing Roll	334.358400	334.5374857187297	CCD S0 on	N	N
[mm] SIM focus pos	-0.684267	-0.6828225247311905	CCD S1 on	O1	Y
[mm] SIM defocus	0	0.001444936568705701	CCD S2 on	Y	Y
[mm] SIM translation stage pos	-190.132523	-190.1425803651734	CCD S3 on	Y	Y
[mm] SIM translation stage offset	0	0.01005778216563158	CCD S4 on	Y	Y
[s] Observation start time (MET)	452930002.184000	452928861.06232	CCD S5 on	N	N
Observation start date	2012-05-09T05:52:16	2012-05-09T05:34:21	Number of optional ACIS chips dropped	0	0
[s] Observation end time (MET)	452940002.184000	452940806.92546	On-chip summing requested	N	N
Observation end date	2012-05-09T08:38:56	2012-05-09T08:53:26	Subarray requested	NONE	NONE
Read mode	TIMED	TIMED	Alternating exposures requested	N	N
			[s] Primary exposure time	0.000000	3.1

2.3 Aspect



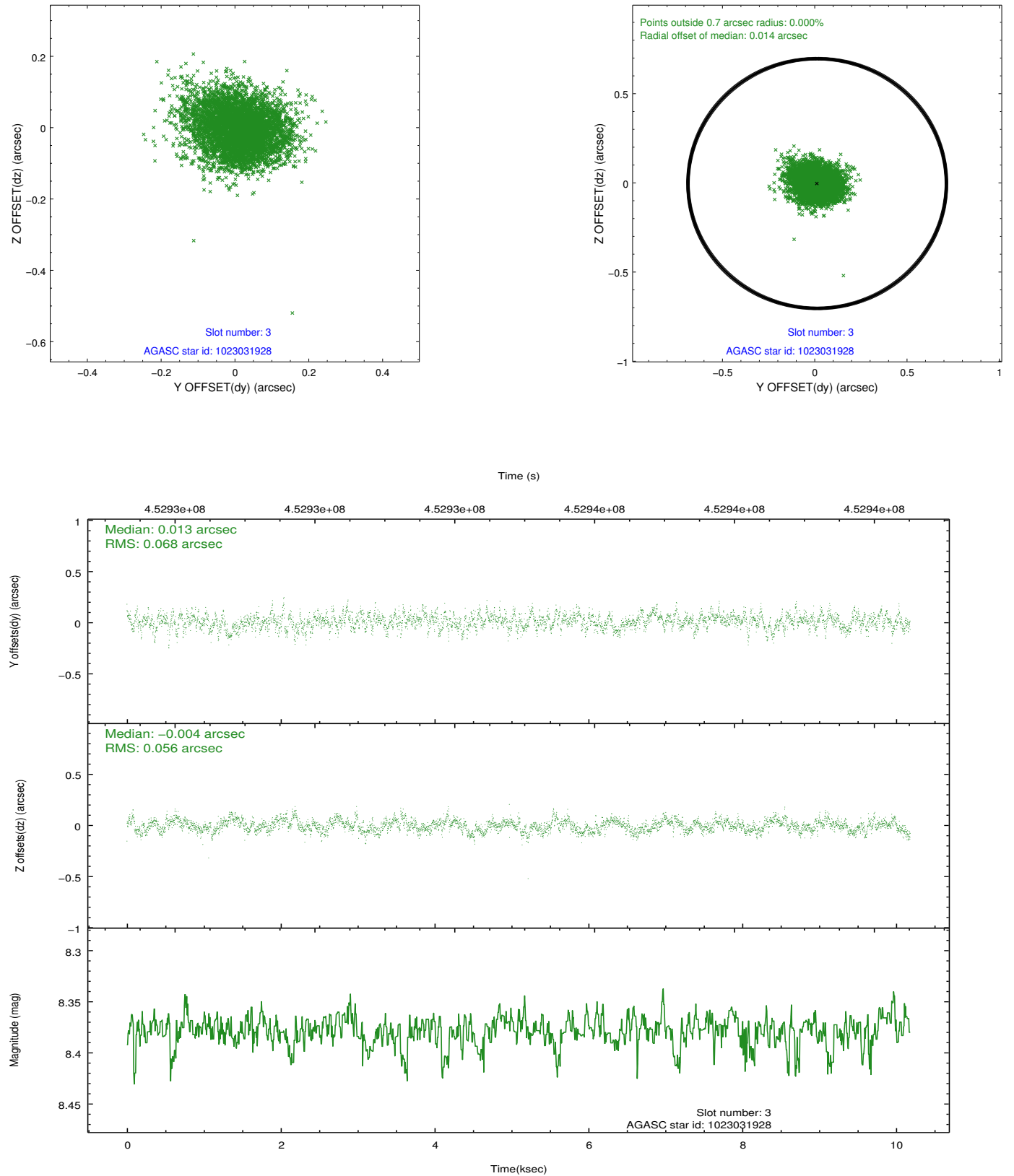


Slot Statistics

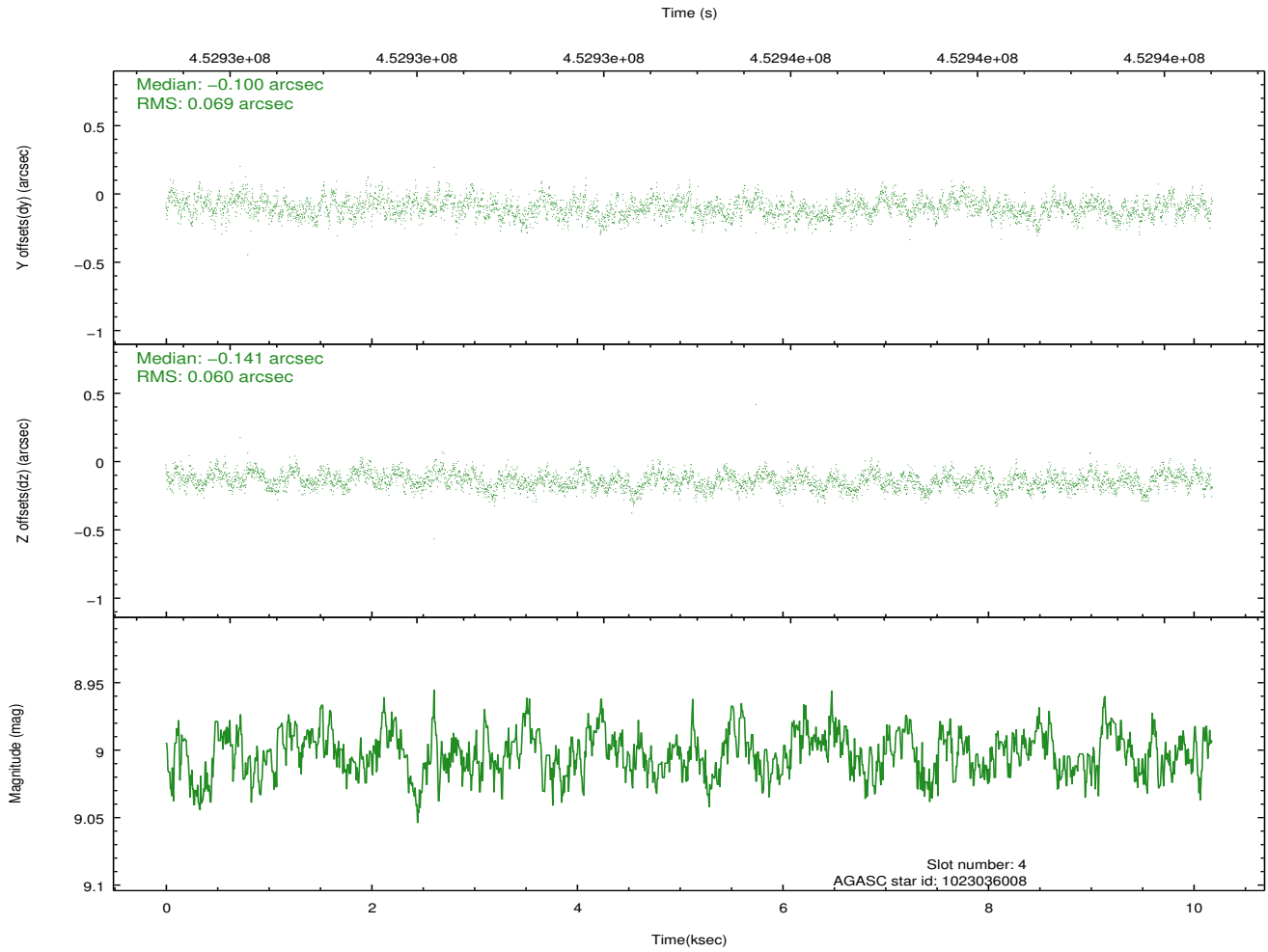
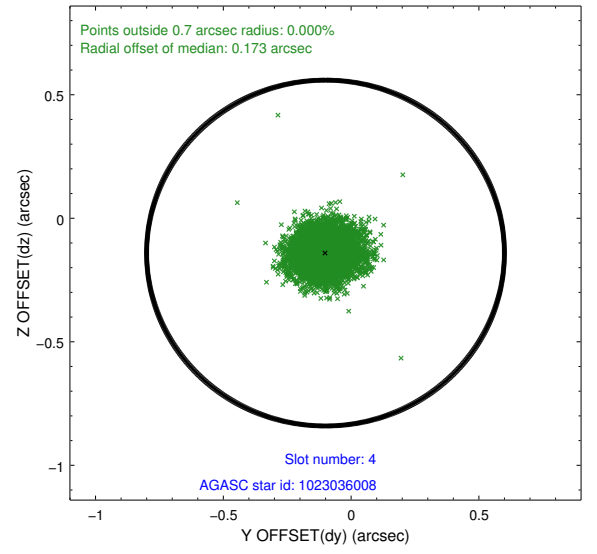
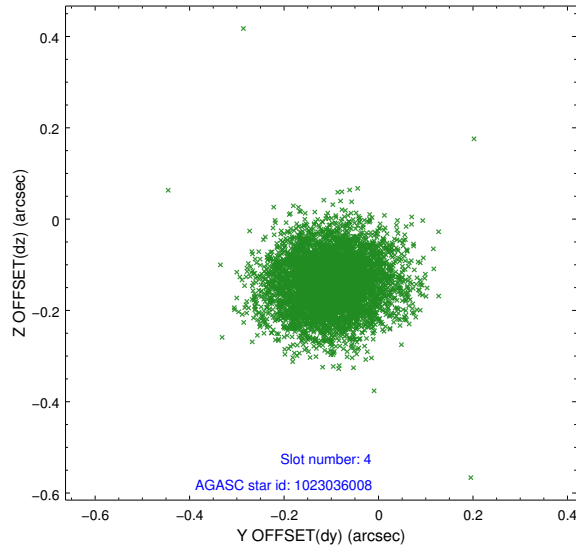
slot	status	id	mag	n_pts	med_dy	med_dz	dr1	dr2	ra	dec	mean_y	mean_z
0	FID	ACIS-S-1	6.98	2483	0.024	-0.052	0.016	0.025	0.000000	0.000000	927.63	-1733.28
1	FID	ACIS-S-4	6.99	2484	0.135	0.029	0.008	0.013	0.000000	0.000000	2145.45	170.41
2	FID	ACIS-S-5	7.02	2484	-0.183	0.035	0.017	0.032	0.000000	0.000000	-1820.78	164.62
3	GUIDE	1023031928	8.38	4961	0.013	-0.004	0.093	0.154	215.451931	-38.680847	-1993.01	2363.65
4	GUIDE	1023036008	9.00	4967	-0.100	-0.141	0.098	0.157	216.686679	-39.143548	1845.72	2345.27
5	GUIDE	1023420248	9.32	4939	0.191	0.296	0.141	0.234	214.759818	-39.905047	-1790.79	-2442.37
6	GUIDE	1023561840	9.41	4958	0.170	0.110	0.132	0.219	216.361935	-40.043281	2406.08	-972.58
7	GUIDE	1023563520	6.83	4967	-0.267	-0.257	0.082	0.132	216.657030	-39.523175	2350.21	1071.36

2.4 Star Slots

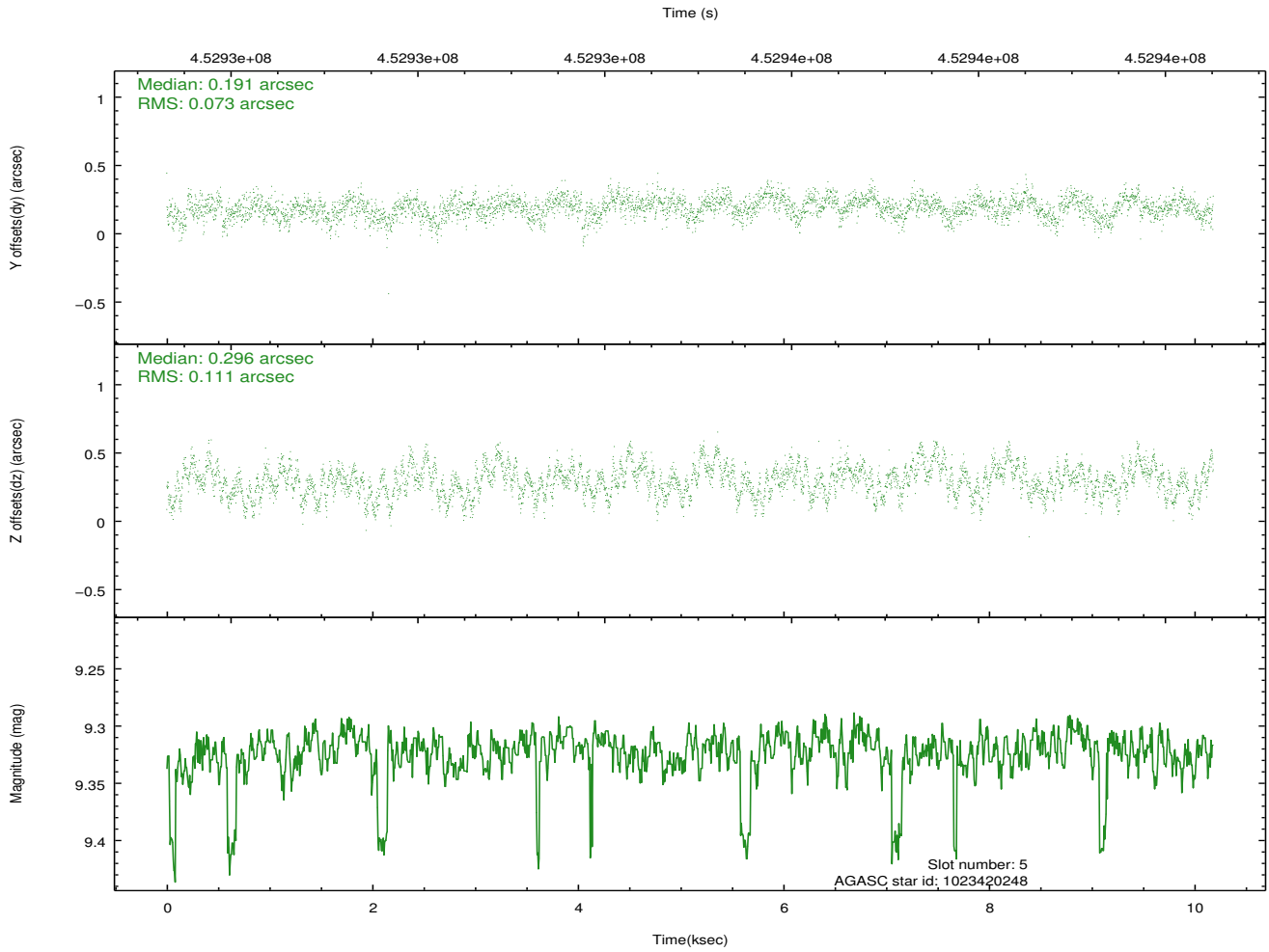
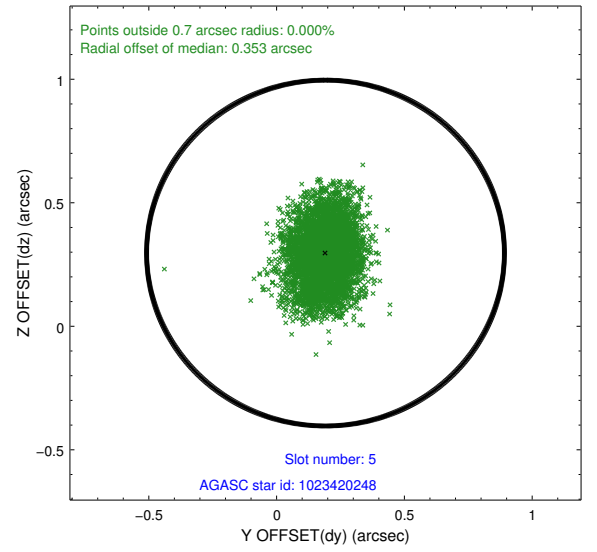
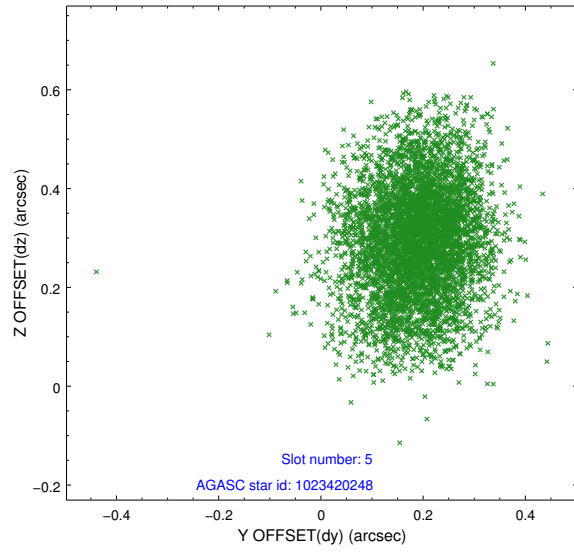
2.4.1 Slot 3



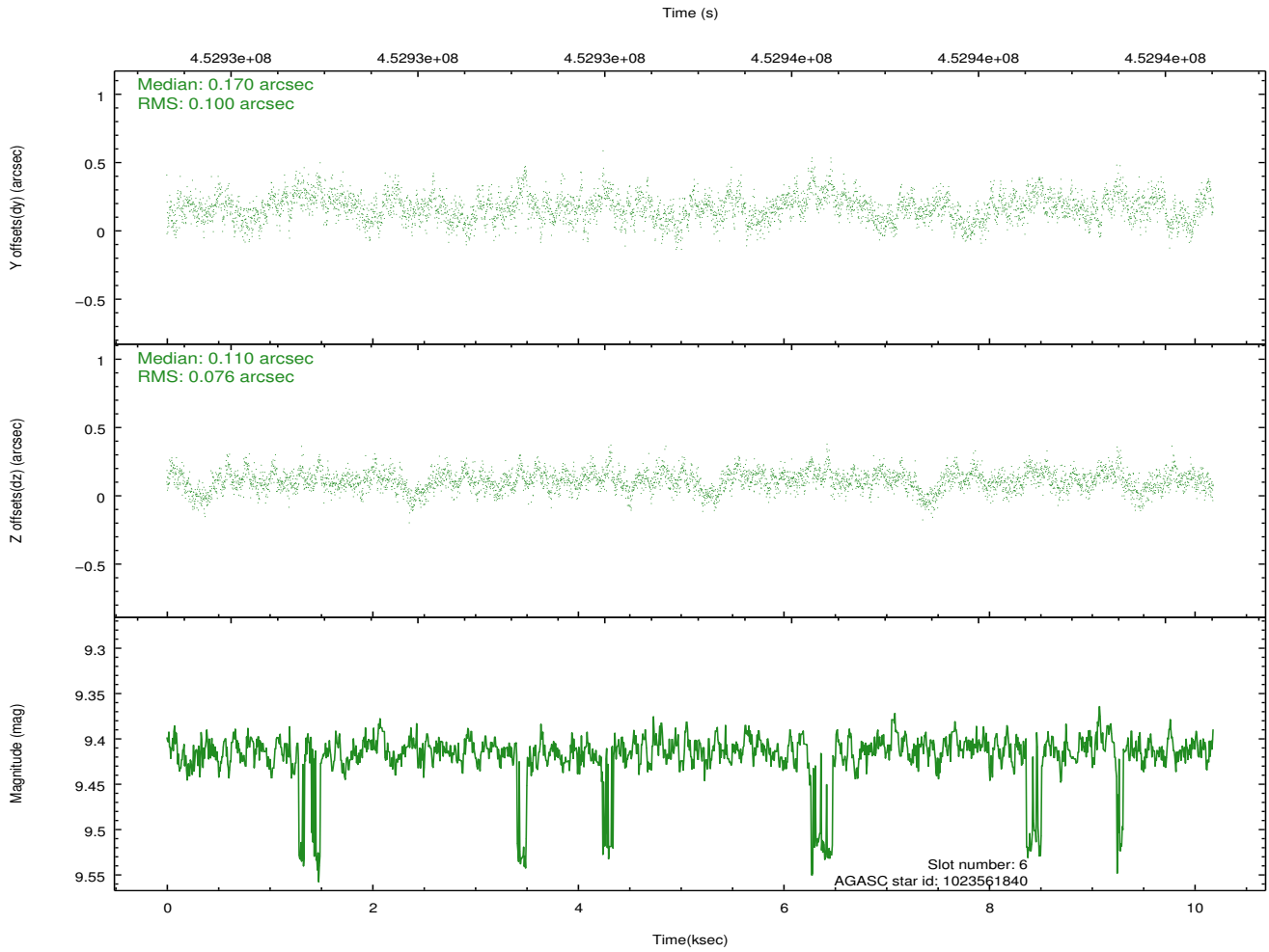
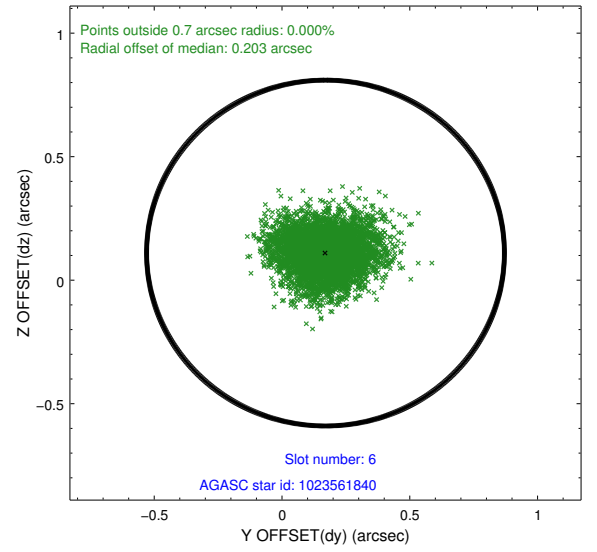
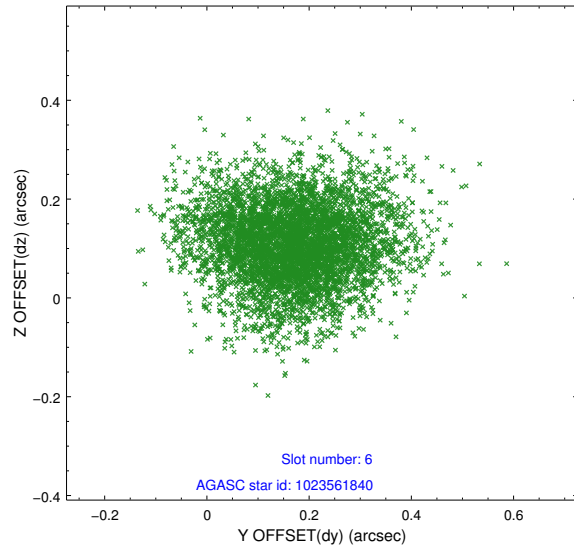
2.4.2 Slot 4



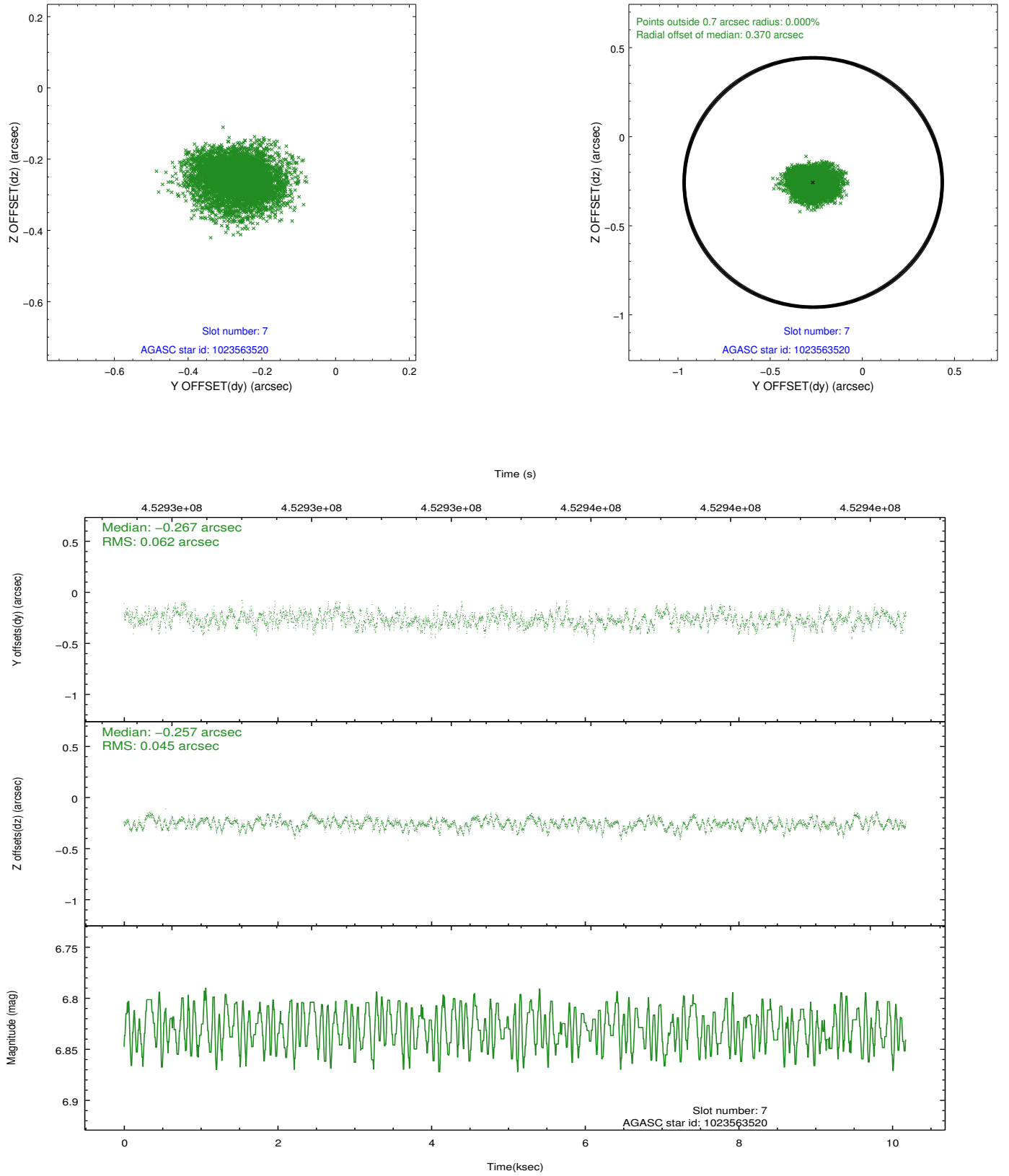
2.4.3 Slot 5



2.4.4 Slot 6

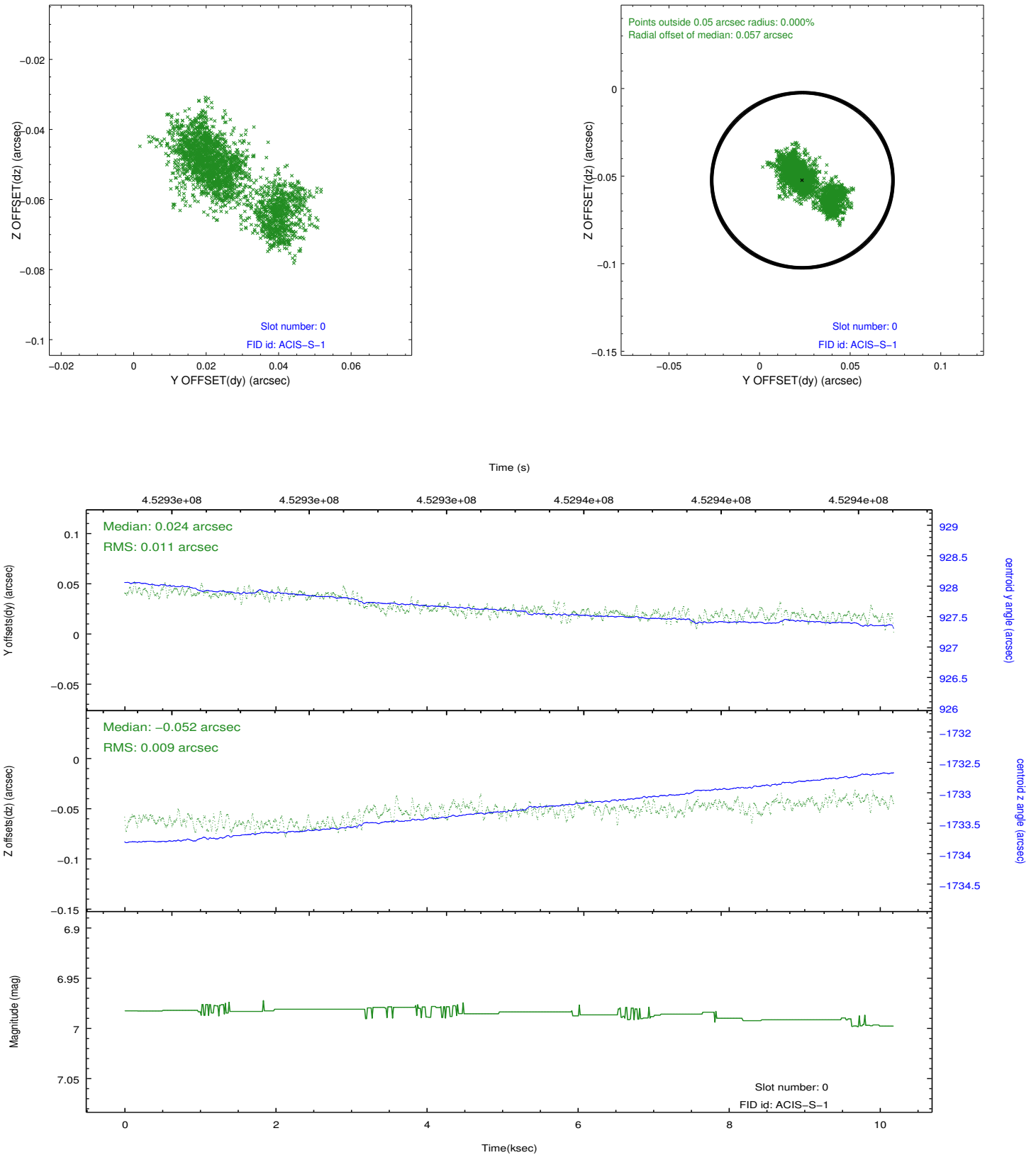


2.4.5 Slot 7

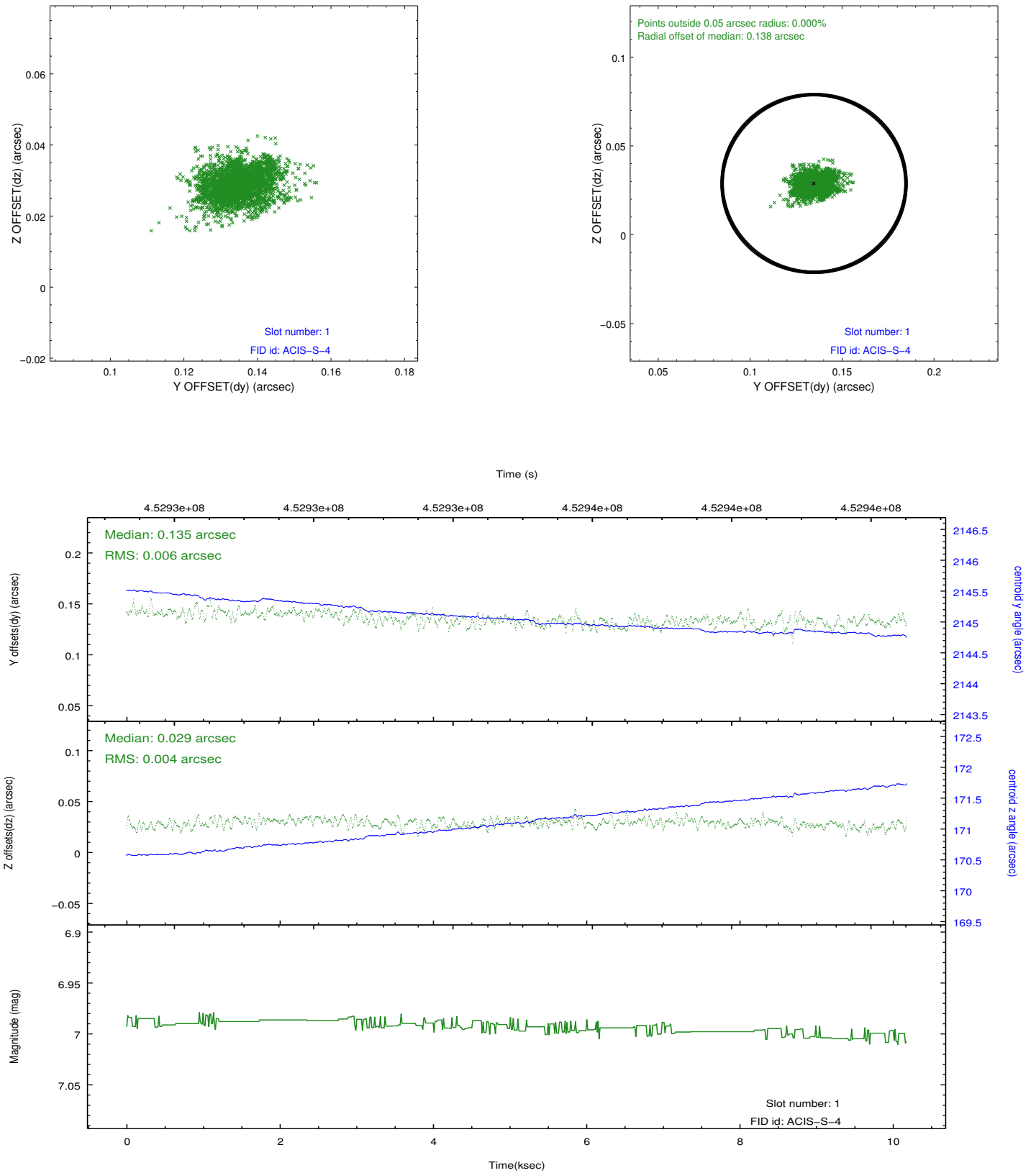


2.5 FID Slots

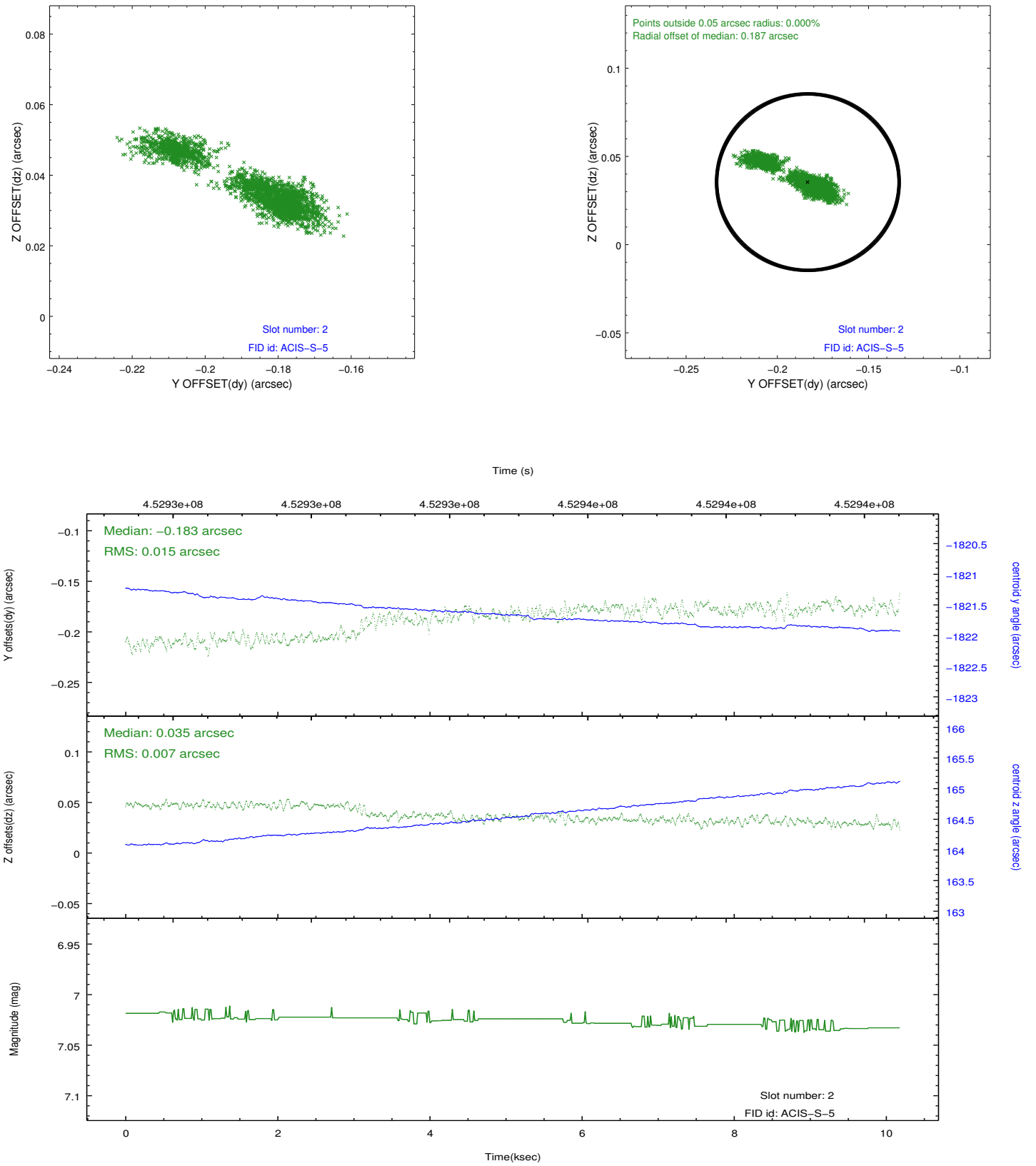
2.5.1 Slot 0



2.5.2 Slot 1



2.5.3 Slot 2



A Summary

A.1 Status

V&V Scientist	Jen Lauer
V&V Date (YYYY-MM-DD)	2012.05.10
V&V Edition	1
V&V Disposition and Status	OK
V&V Charge Time	10.062600077391

A.2 Comments