

V&V Reference Report

L2 ASCDS Version : 8.4.3

Observation 13428 - L2 Version 2
Chandra X-Ray Center

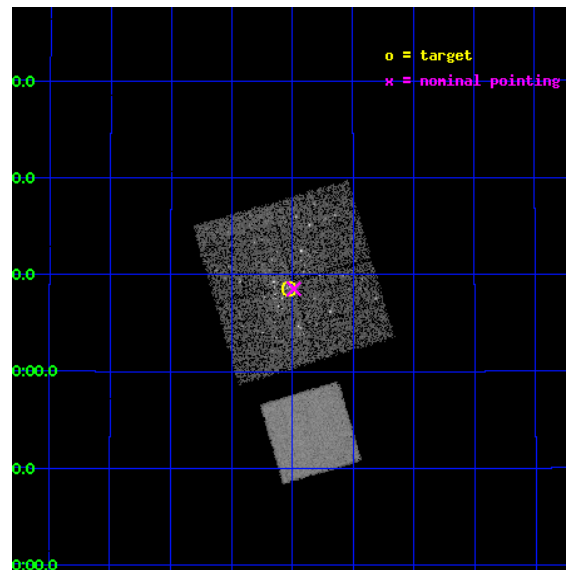
L2 Processing Date : Feb 26 2012

Contents

1	Front	2
2	OBI	3
2.1	OBI	3
2.1.1	Images	3
2.1.2	Bias	3
2.1.3	Parameters	4
2.1.4	Events	4
2.2	Compared Parameters	5
2.3	Aspect	6
2.4	Star Slots	9
2.4.1	Slot 3	9
2.4.2	Slot 4	10
2.4.3	Slot 5	11
2.4.4	Slot 6	12
2.4.5	Slot 7	13
2.5	FID Slots	14
2.5.1	Slot 0	14
2.5.2	Slot 1	15
2.5.3	Slot 2	16
A	Summary	17
A.1	Status	17
A.2	Comments	17

1 Front

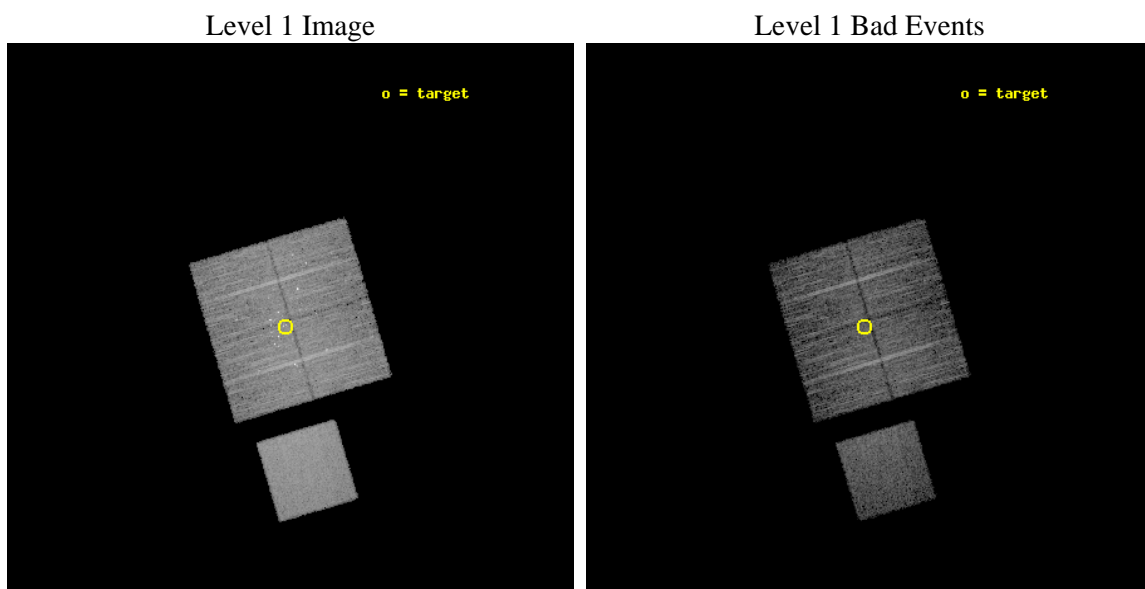
seq_num	200750	Sequence number
obs_id	13428	Observation id
title	Connecting Young Stellar Object Variability Across the Great Observatories: A Combined Spitzer and Chandra Study	Proposal title
observer	Dr. Kevin Flaherty	Principal investigator
object	IC 348	Source name
dtcycle	0	
cycle	P	events from which exps? Prim/Second/Both
ra_targ	56.13125	Observer's specified target RA [deg]
dec_targ	32.142694	Observer's specified target Dec [deg]
ra_nom	56.121775349917	Nominal RA [deg]
dec_nom	32.142539595775	Nominal Dec [deg]
roll_nom	163.43888423771	Nominal Roll [deg]
revision	2	Processing version of data
ontime	9343.3590716124	Sum of GTIs [s]
livetime	9221.2812068609	Livetime [s]
ontime0	9346.5000718832	Sum of GTIs [s]
ontime1	9346.5000718832	Sum of GTIs [s]
ontime2	9346.5000718832	Sum of GTIs [s]
ontime3	9343.3590716124	Sum of GTIs [s]
ontime7	9346.5000718832	Sum of GTIs [s]
l2events	62601	Number of level 2 events



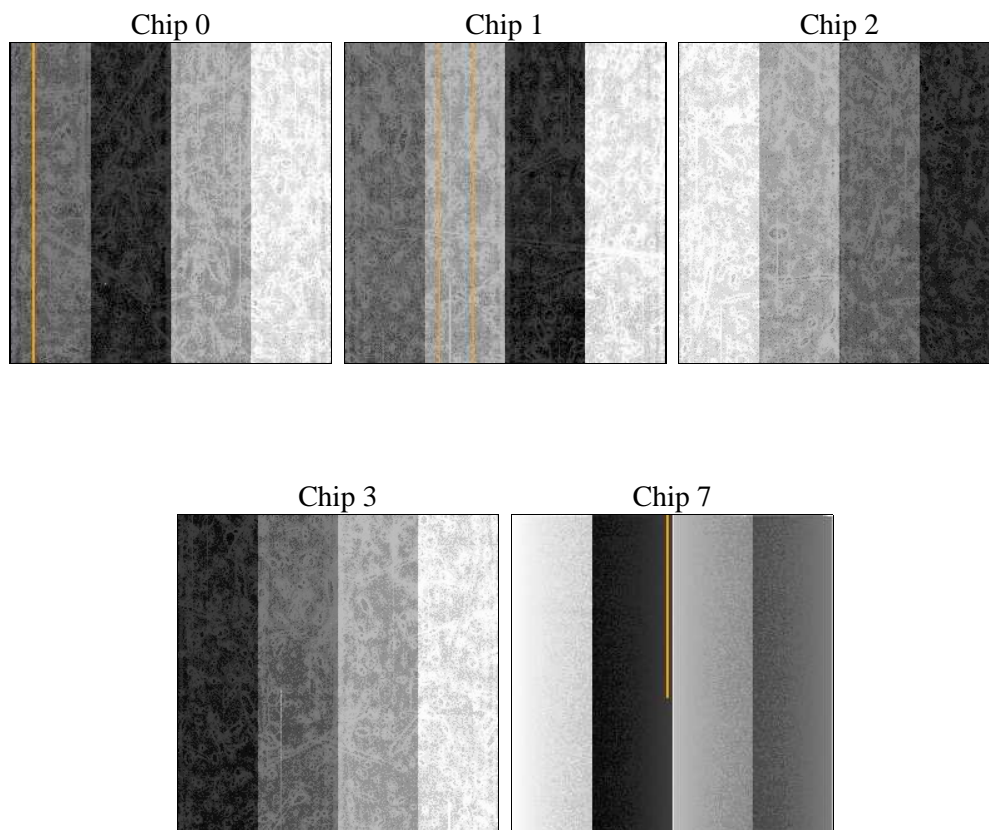
2 OBI

2.1 OBI

2.1.1 Images



2.1.2 Bias



2.1.3 Parameters

obi_num	2	Obi number	sched_exp_time	9300.000000	[s] Scheduled observation exposure time
ascdsver	8.4.3	Processing system revision	ontime	9343.3590716124	Sum of GTIs [s]
caldsver	4.4.8	 	ontime0	9346.5000718832	Sum of GTIs [s]
date	2012-02-26T15:36:20	Date and time of file creation	ontime1	9346.5000718832	Sum of GTIs [s]
revision	2	Processing version of data	ontime2	9346.5000718832	Sum of GTIs [s]
			ontime3	9343.3590716124	Sum of GTIs [s]
			ontime7	9346.5000718832	Sum of GTIs [s]
			l1events	299593	Number of level 1 events

2.1.4 Events

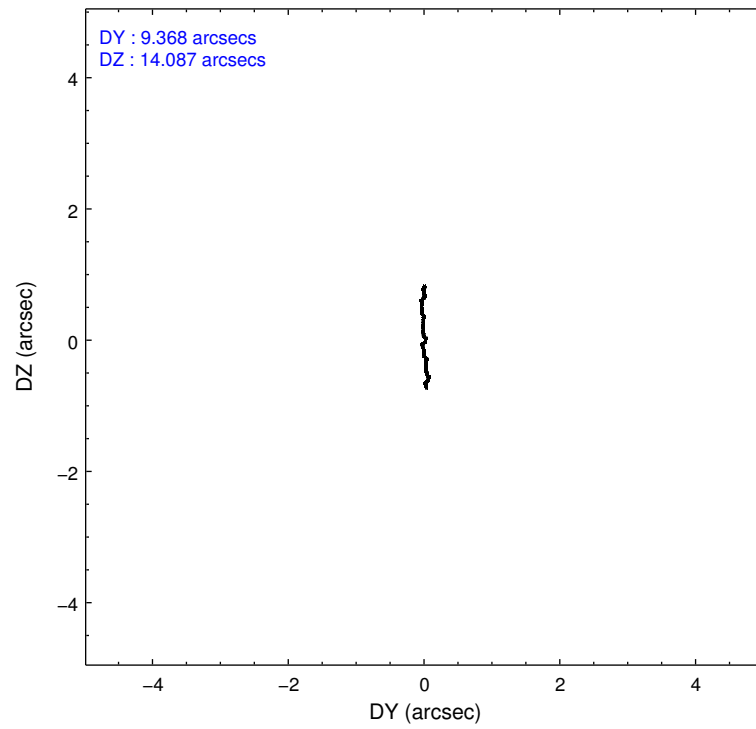
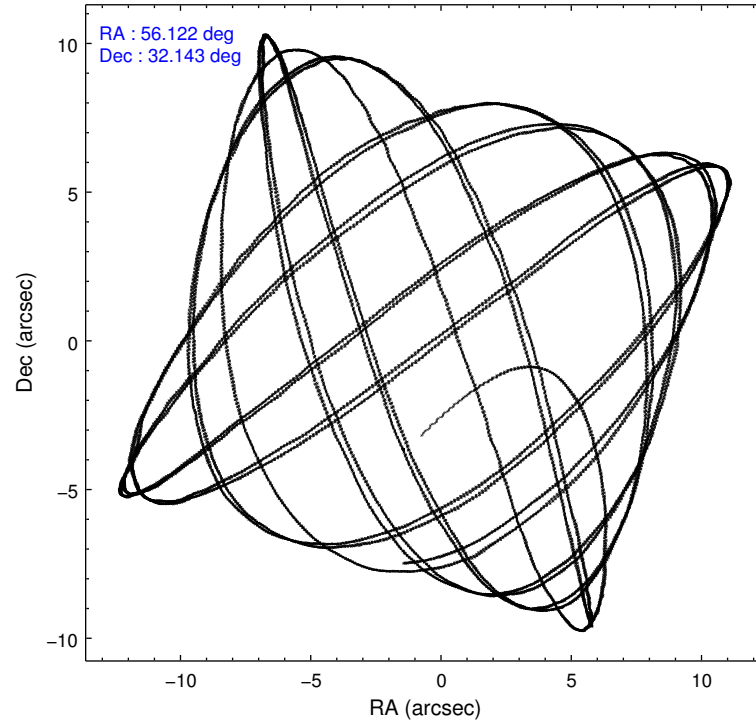
	ccd 0	ccd 1	ccd 2	ccd 3	ccd 7
level 1 events	54355	54766	56682	59673	74117
rejected events	45637	45247	49594	49421	41423
rejected %	83%	82%	87%	82%	55%

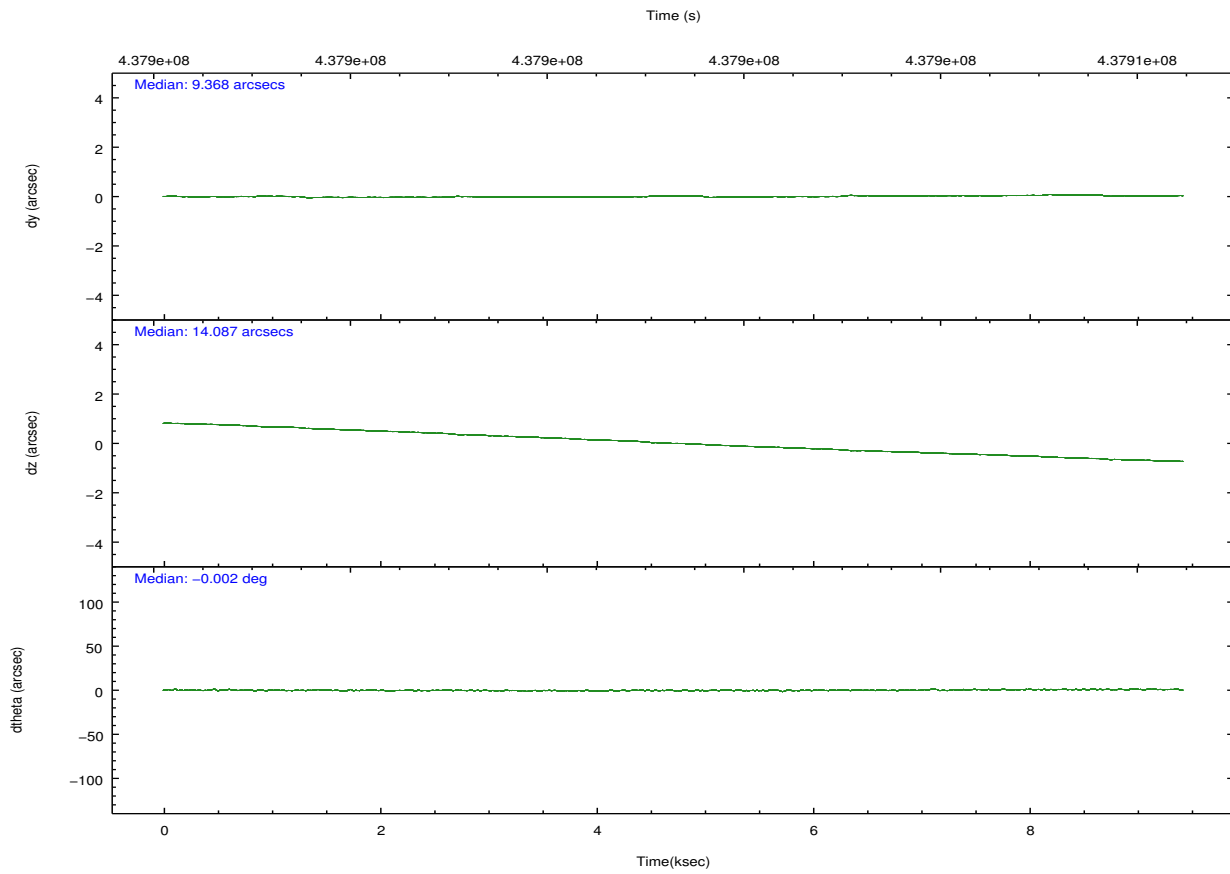
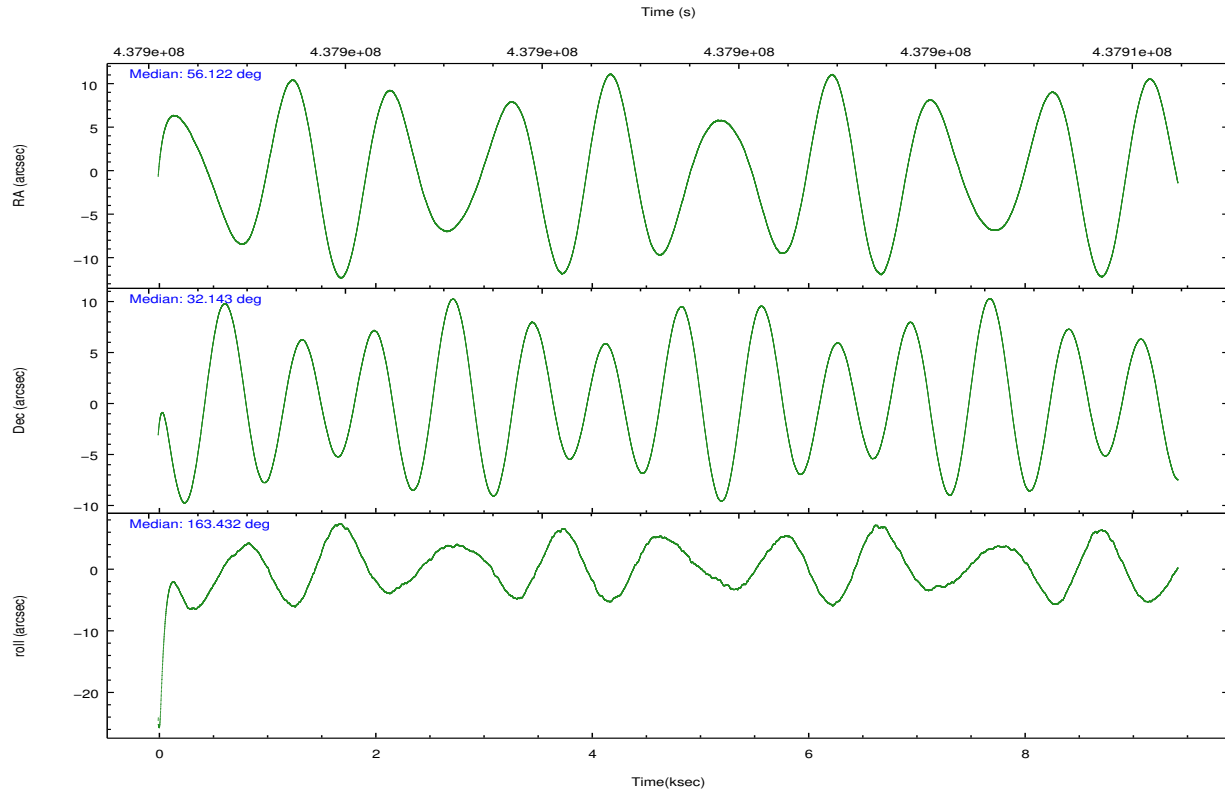
	ccd 0	ccd 1	ccd 2	ccd 3	ccd 7
grade 0 events	3991	4428	2880	5467	2923
	7%	8%	5%	9%	3%
grade 1 events	55	68	33	86	82
	0%	0%	0%	0%	0%
grade 2 events	1888	1953	1612	1826	6651
	3%	3%	2%	3%	8%
grade 3 events	731	796	695	827	2939
	1%	1%	1%	1%	3%
grade 4 events	710	774	684	787	2912
	1%	1%	1%	1%	3%
grade 5 events	2589	2740	2420	2787	7825
	4%	5%	4%	4%	10%
grade 6 events	1401	1570	1221	1350	17279
	2%	2%	2%	2%	23%
grade 7 events	42990	42437	47137	46543	33506
	79%	77%	83%	77%	45%

2.2 Compared Parameters

Parameter	Planned	Actual	Parameter	Planned	Actual
Instrument	ACIS	ACIS	Obspar format version number	7	7
Detector	ACIS-01237	ACIS-01237	Obspar file type	PREDICTED	ACTUAL
Grating	NONE	NONE	Obspar update status	NONE	UPDATED
Data mode	VFAINT	VFAINT	CCD I0 on	Y	Y
Observation mode	POINTING	POINTING	CCD I1 on	Y	Y
[deg] Pointing RA	56.153267	56.12177534991677	CCD I2 on	Y	Y
[deg] Pointing Dec	32.149085	32.1425395957754	CCD I3 on	Y	Y
[deg] Pointing Roll	163.213474	163.4388842377089	CCD S0 on	N	N
[mm] SIM focus pos	-0.782348	-0.7809083437167272	CCD S1 on	N	N
[mm] SIM defocus	0	0.001439871863259334	CCD S2 on	N	N
[mm] SIM translation stage pos	-233.592463	-233.5874344608287	CCD S3 on	O1	Y
[mm] SIM translation stage offset	0	-0.005018542100998502	CCD S4 on	N	N
[s] Observation start time (MET)	437896688.184000	437895319.02929	CCD S5 on	N	N
Observation start date	2011-11-17T05:57:02	2011-11-17T05:35:19	Number of optional ACIS chips dropped	0	0
[s] Observation end time (MET)	437905988.184000	437906664.75489	On-chip summing requested	N	N
Observation end date	2011-11-17T08:32:02	2011-11-17T08:44:24	Subarray requested	NONE	NONE
Read mode	TIMED	TIMED	Alternating exposures requested	N	N
			[s] Primary exposure time	0.000000	3.1

2.3 Aspect



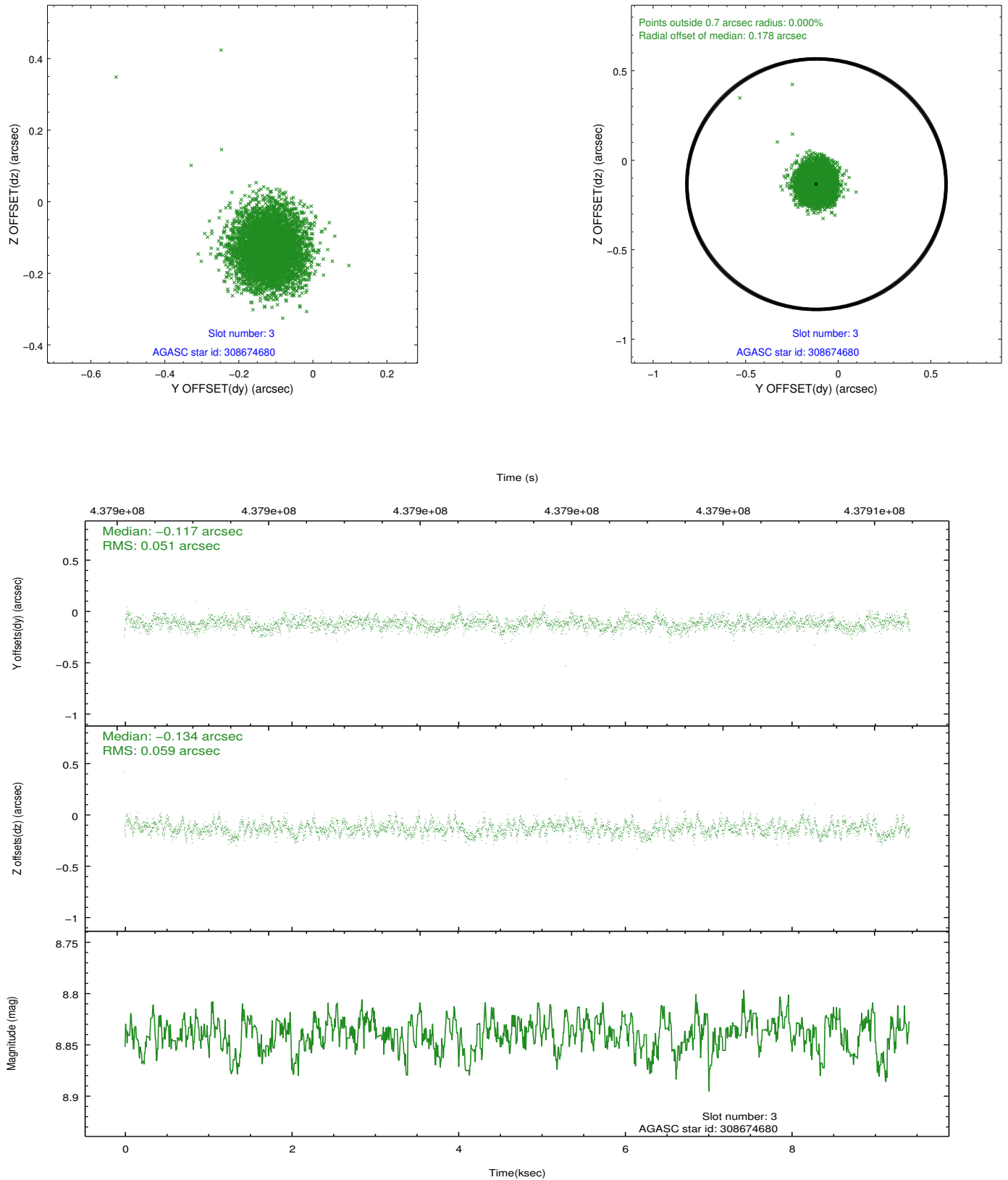


Slot Statistics

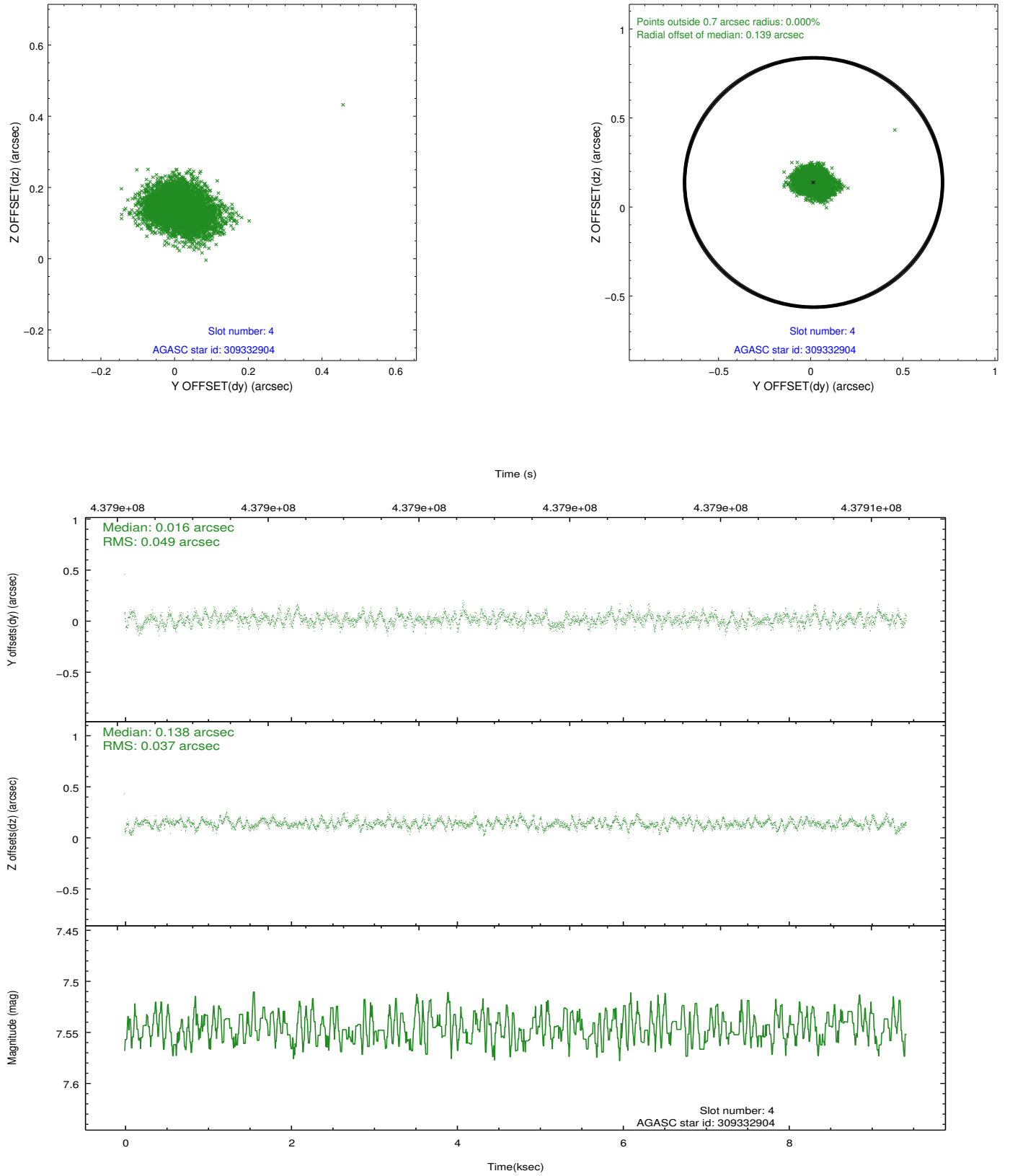
slot	status	id	mag	n_pts	med_dy	med_dz	dr1	dr2	ra	dec	mean_y	mean_z
0	FID	ACIS-I-1	7.02	2299	0.075	-0.022	0.011	0.021	0.000000	0.000000	930.32	-837.72
1	FID	ACIS-I-5	7.00	2298	-0.226	0.076	0.008	0.013	0.000000	0.000000	-1817.78	1059.58
2	FID	ACIS-I-6	7.01	2299	0.061	0.014	0.016	0.026	0.000000	0.000000	395.21	1704.68
3	GUIDE	308674680	8.84	4596	-0.117	-0.134	0.083	0.131	55.747345	31.652644	675.21	2067.30
4	GUIDE	309332904	7.55	4596	0.016	0.138	0.065	0.105	56.362777	32.287653	-465.23	-661.99
5	GUIDE	309336160	7.08	4598	-0.073	0.158	0.073	0.116	56.670296	32.290187	-1358.24	-944.40
6	GUIDE	308676888	9.11	4594	-0.011	-0.126	0.107	0.168	55.566279	31.676245	1231.19	2144.58
7	GUIDE	309204808	7.01	4597	0.188	-0.048	0.070	0.127	55.615150	32.939222	2380.04	-2255.98

2.4 Star Slots

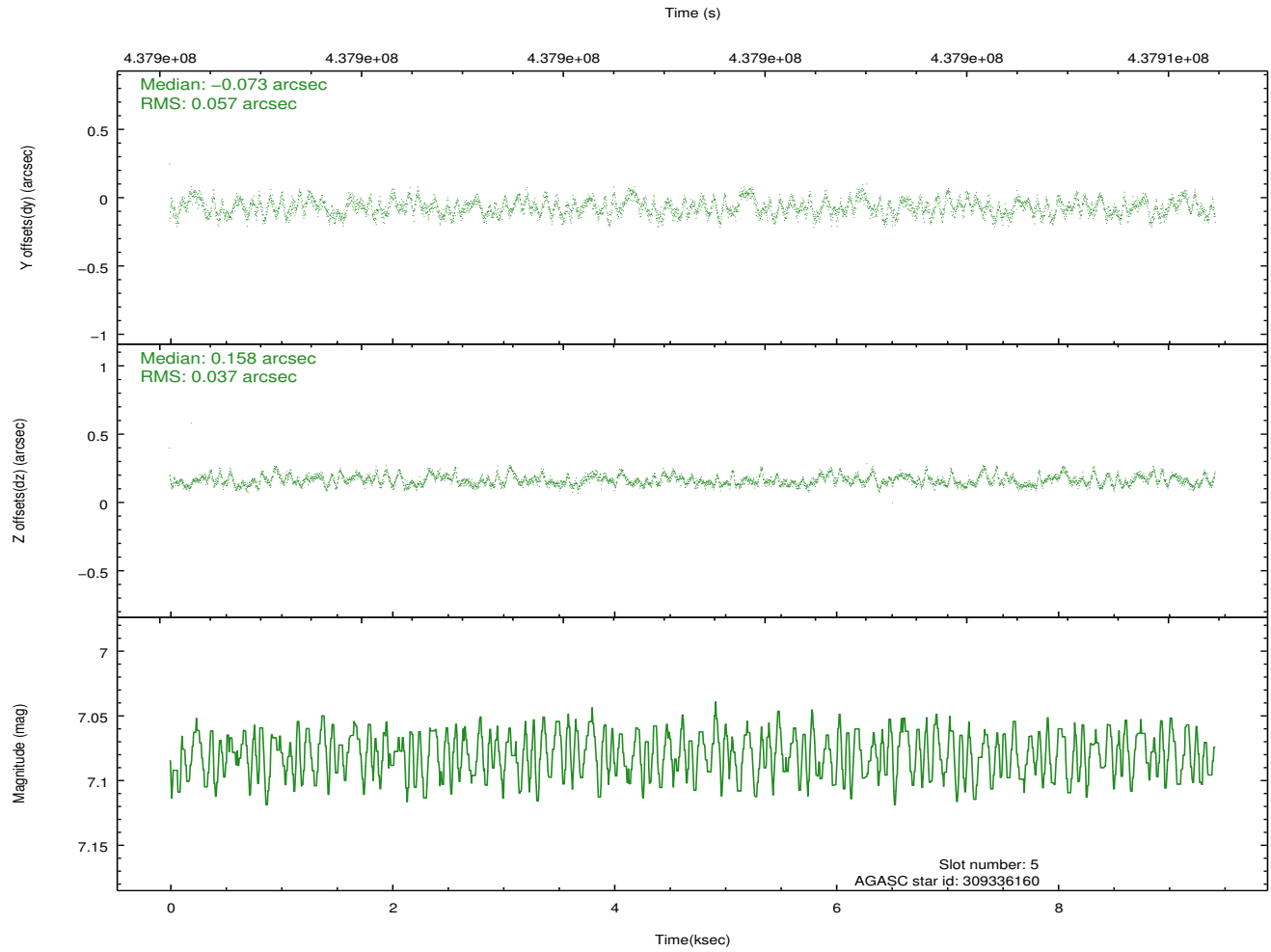
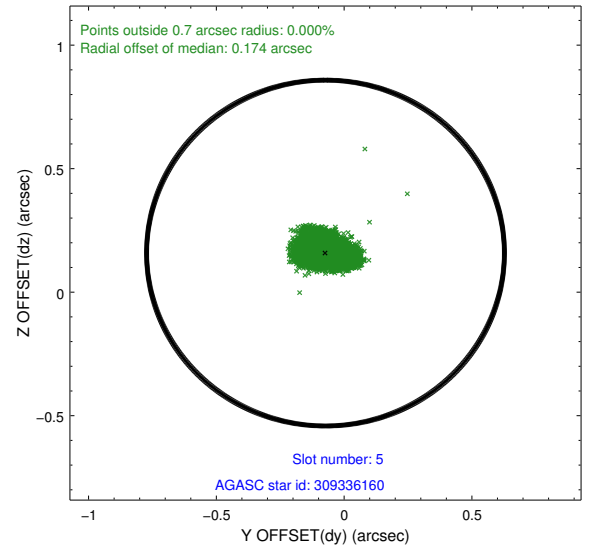
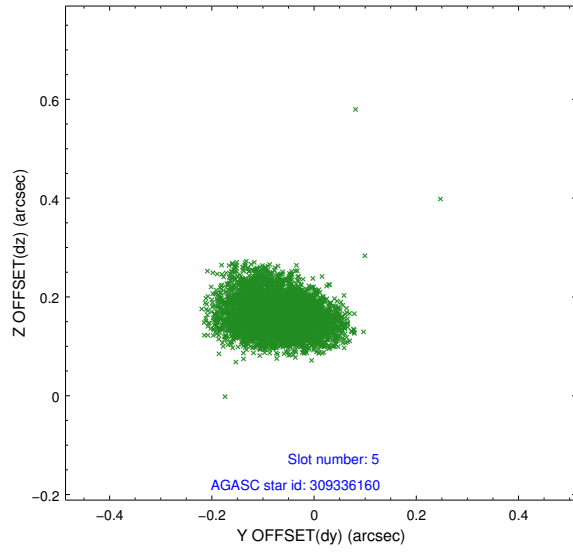
2.4.1 Slot 3



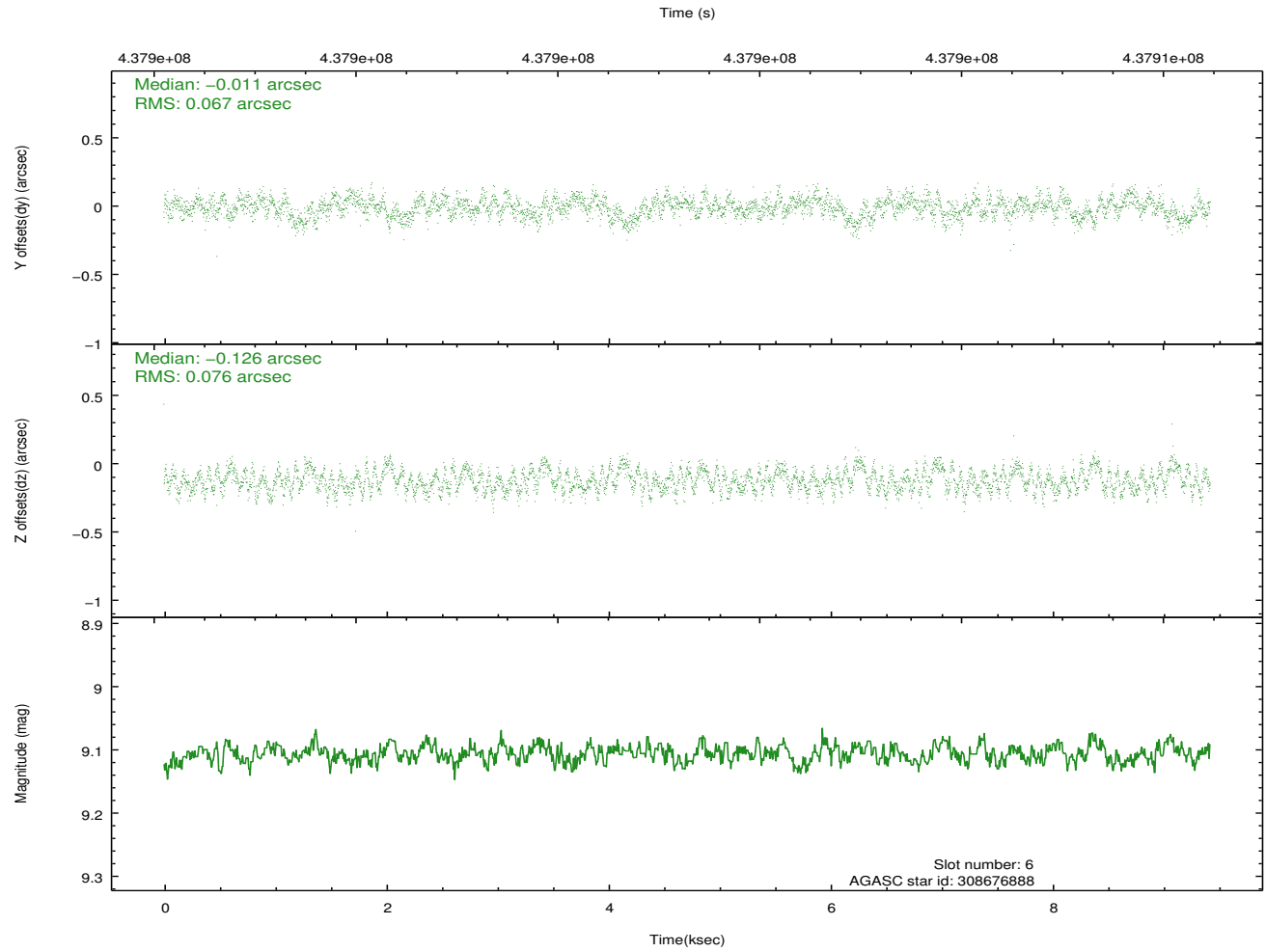
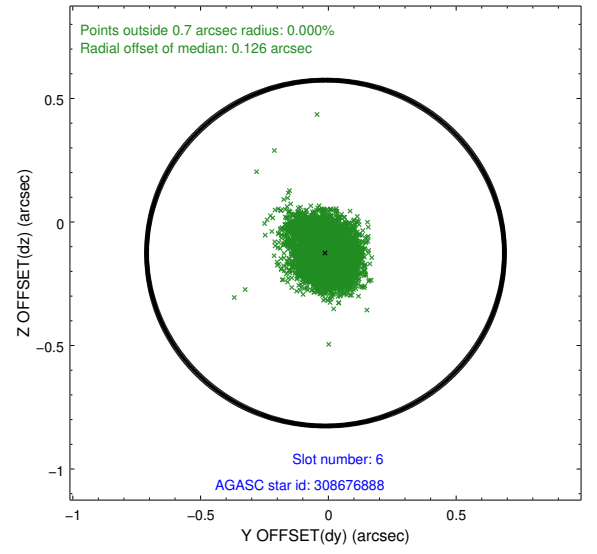
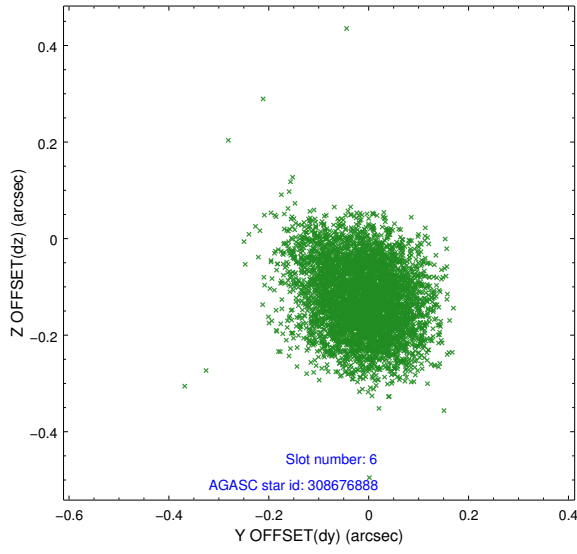
2.4.2 Slot 4



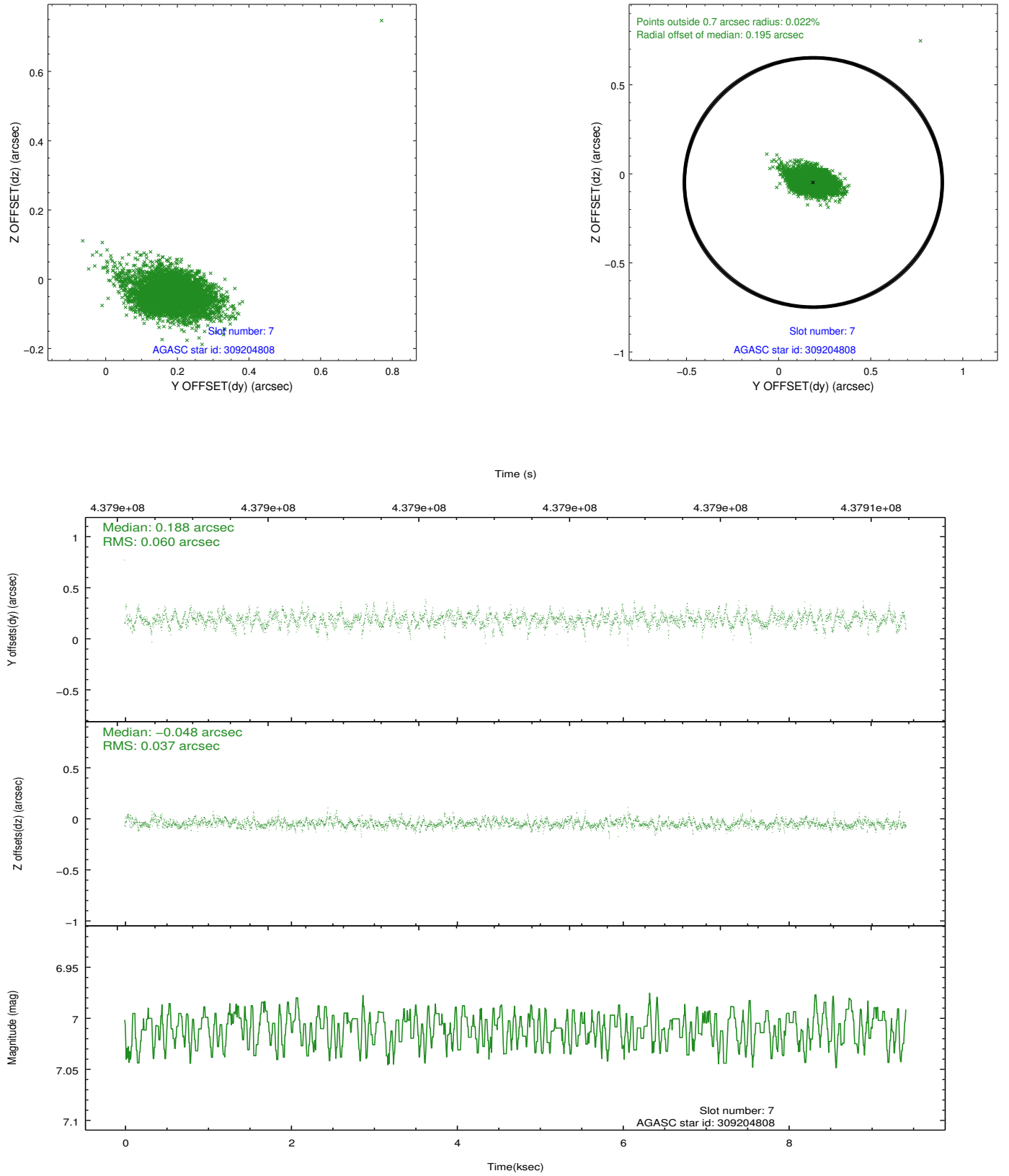
2.4.3 Slot 5



2.4.4 Slot 6

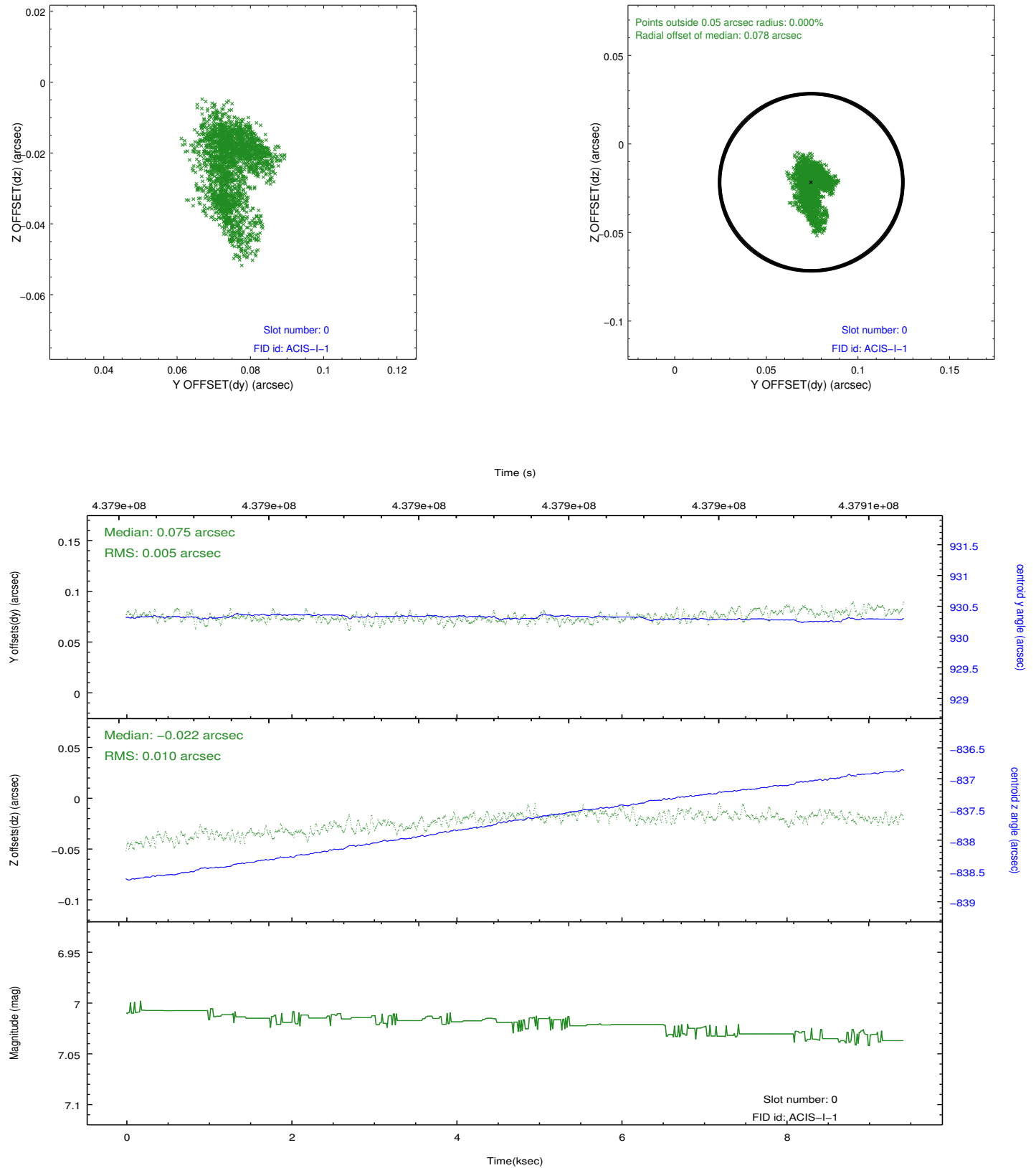


2.4.5 Slot 7

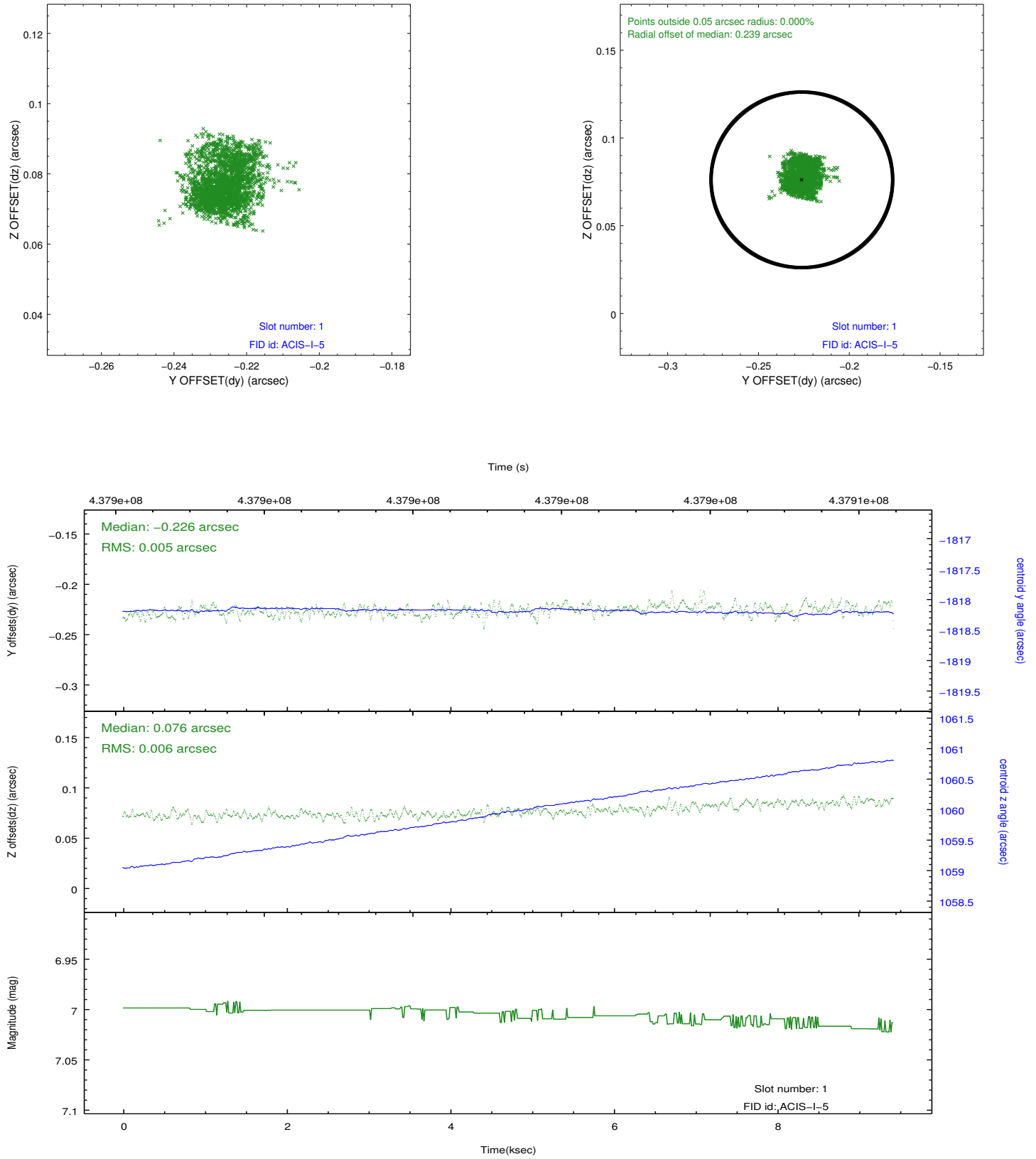


2.5 FID Slots

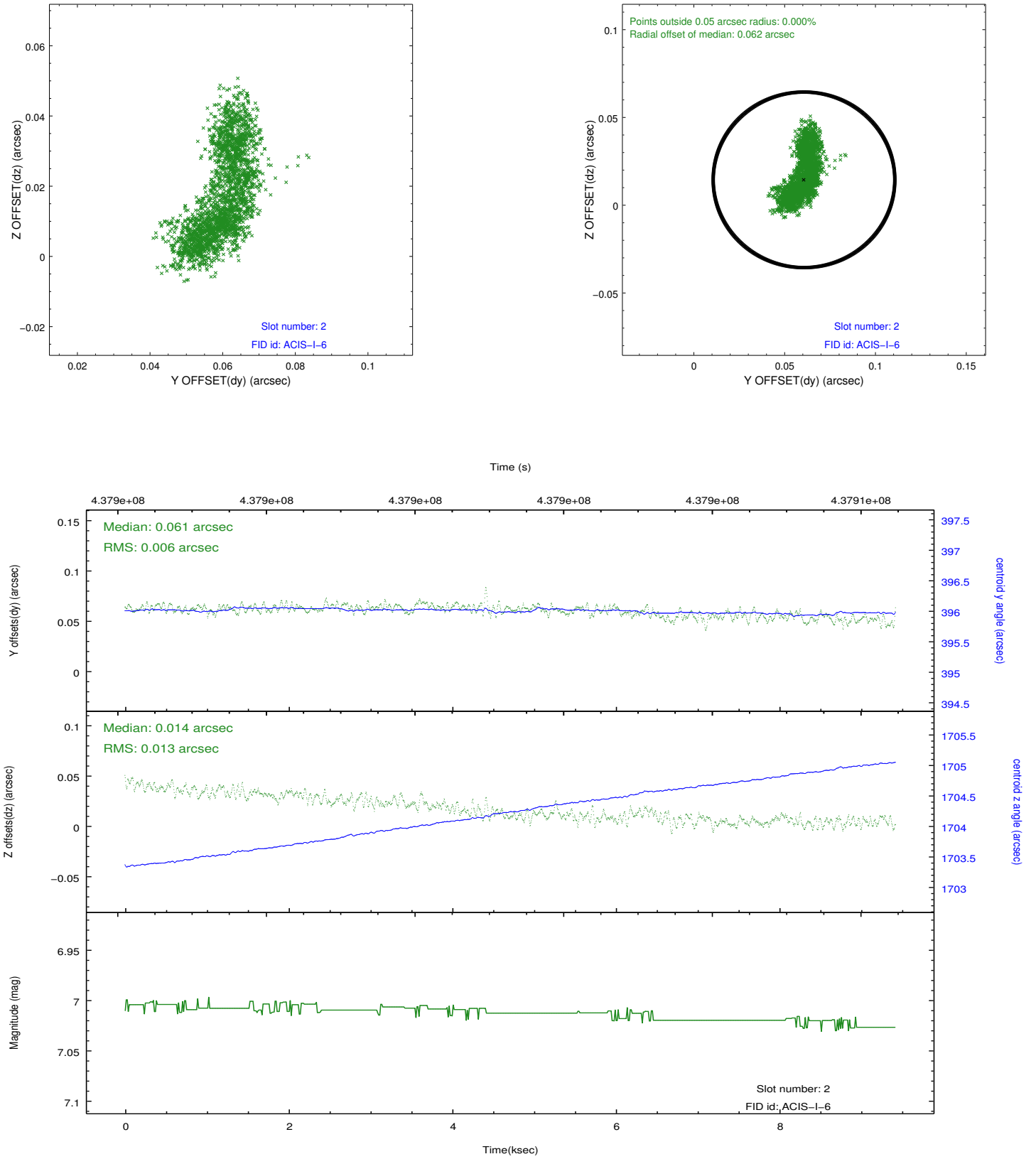
2.5.1 Slot 0



2.5.2 Slot 1



2.5.3 Slot 2



A Summary

A.1 Status

V&V Scientist	Jen Lauer
V&V Date (YYYY-MM-DD)	2012.02.28
V&V Edition	1
V&V Disposition and Status	OK
V&V Charge Time	9.3433590715528

A.2 Comments

Joint Observatories: CXO-Spitzer. Monitor constraint met.