

V&V Reference Report

L2 ASCDS Version : 8.4.3

Observation 12173 - L2 Version 2
Chandra X-Ray Center

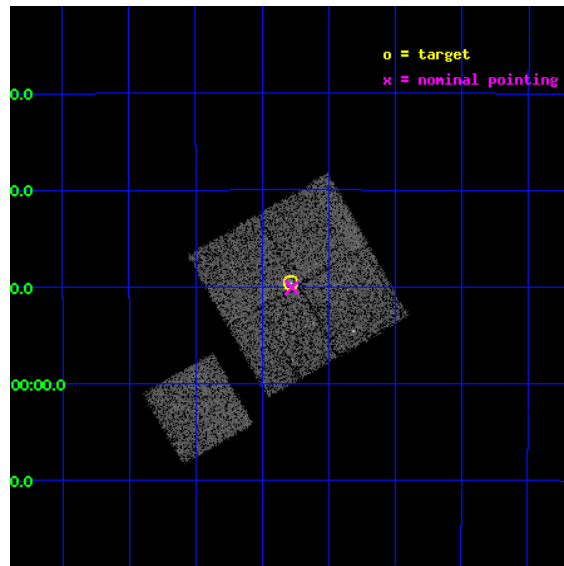
L2 Processing Date : Feb 20 2012

Contents

1	Front	2
2	OBI	3
2.1	OBI	3
2.1.1	Images	3
2.1.2	Bias	3
2.1.3	Parameters	4
2.1.4	Events	4
2.2	Compared Parameters	5
2.3	Aspect	6
2.4	Star Slots	9
2.4.1	Slot 3	9
2.4.2	Slot 4	10
2.4.3	Slot 5	11
2.4.4	Slot 6	12
2.4.5	Slot 7	13
2.5	FID Slots	14
2.5.1	Slot 0	14
2.5.2	Slot 1	15
2.5.3	Slot 2	16
A	Summary	17
A.1	Status	17
A.2	Comments	17

1 Front

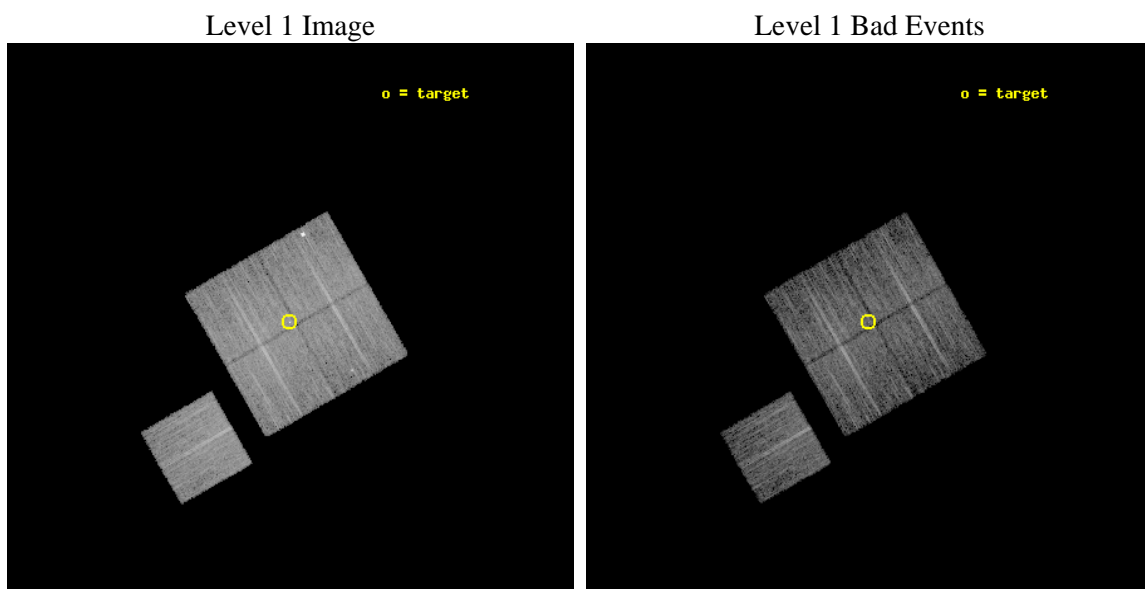
seq_num	800939	Sequence number
obs_id	12173	Observation id
title	CLoGS I. - A Complete Local-volume Group Survey	Proposal title
observer	Dr Stephen Murray	Principal investigator
object	LGG345	Source name
dtcycle	0	
cycle	P	events from which exps? Prim/Second/Both
ra_targ	200.070833	Observer's specified target RA [deg]
dec_targ	-21.827222	Observer's specified target Dec [deg]
ra_nom	200.06893643872	Nominal RA [deg]
dec_nom	-21.835148961415	Nominal Dec [deg]
roll_nom	240.10257049179	Nominal Roll [deg]
revision	2	Processing version of data
ontime	10052.767466486	Sum of GTIs [s]
livetime	9921.4206587961	Livetime [s]
ontime0	10055.785326838	Sum of GTIs [s]
ontime1	10055.826366842	Sum of GTIs [s]
ontime2	10052.726406455	Sum of GTIs [s]
ontime3	10052.767466486	Sum of GTIs [s]
ontime6	10055.744286835	Sum of GTIs [s]
l2events	32021	Number of level 2 events



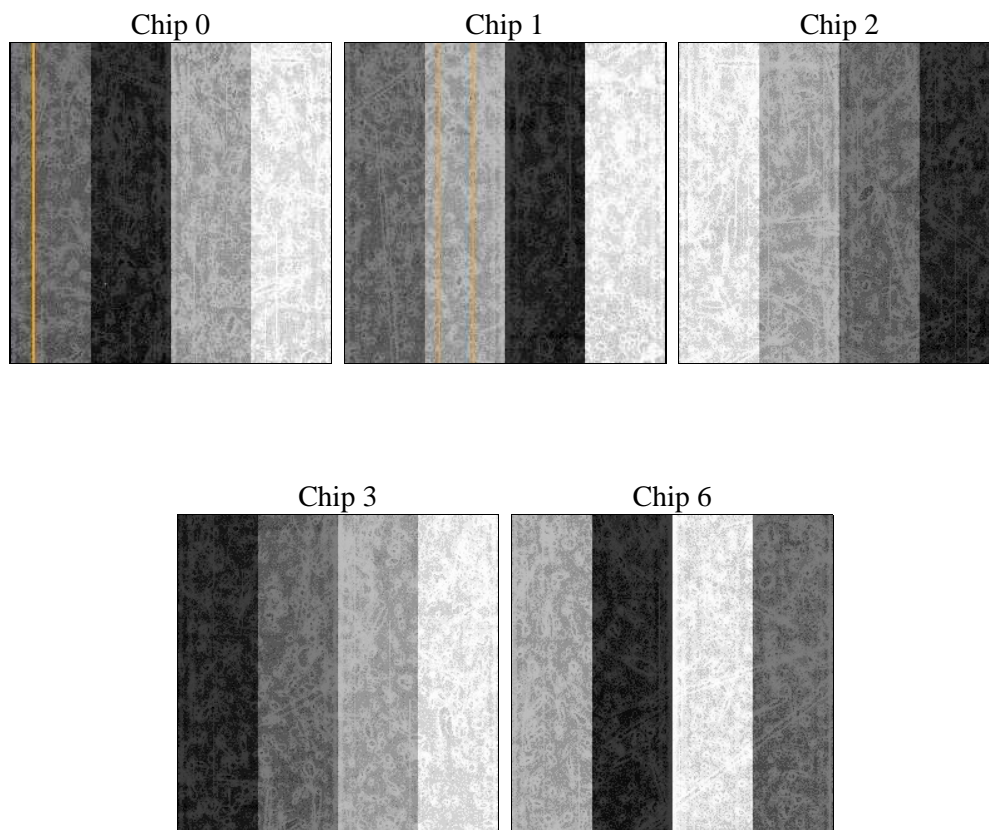
2 OBI

2.1 OBI

2.1.1 Images



2.1.2 Bias



2.1.3 Parameters

obi_num	0	Obi number	sched_exp_time	10000.000000	[s] Scheduled observation exposure time
ascdsver	8.4.3	Processing system revision	ontime	10052.767466486	Sum of GTIs [s]
caldsver	4.4.8	 	ontime0	10055.785326838	Sum of GTIs [s]
date	2012-02-20T22:44:56	Date and time of file creation	ontime1	10055.826366842	Sum of GTIs [s]
revision	2	Processing version of data	ontime2	10052.726406455	Sum of GTIs [s]
			ontime3	10052.767466486	Sum of GTIs [s]
			ontime6	10055.744286835	Sum of GTIs [s]
			l1events	315157	Number of level 1 events

2.1.4 Events

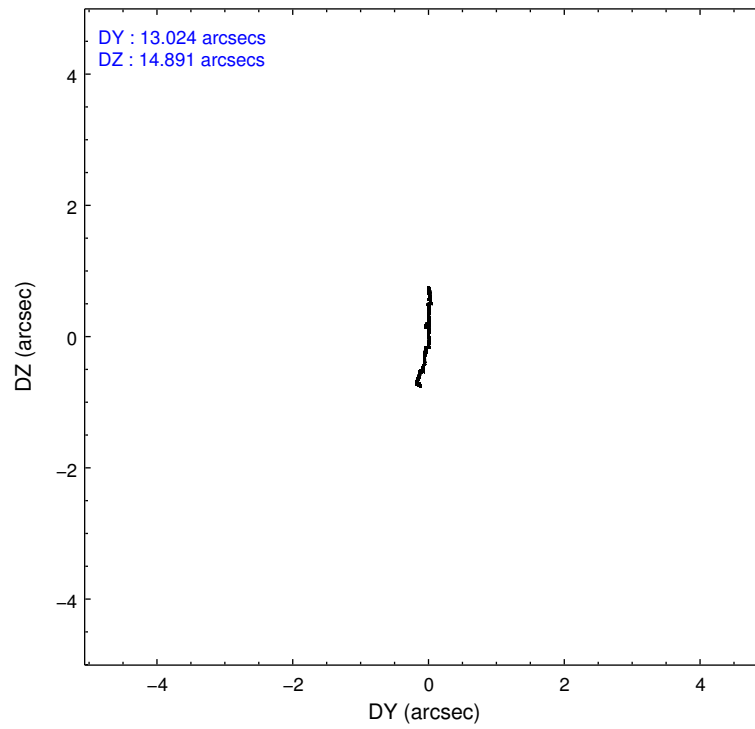
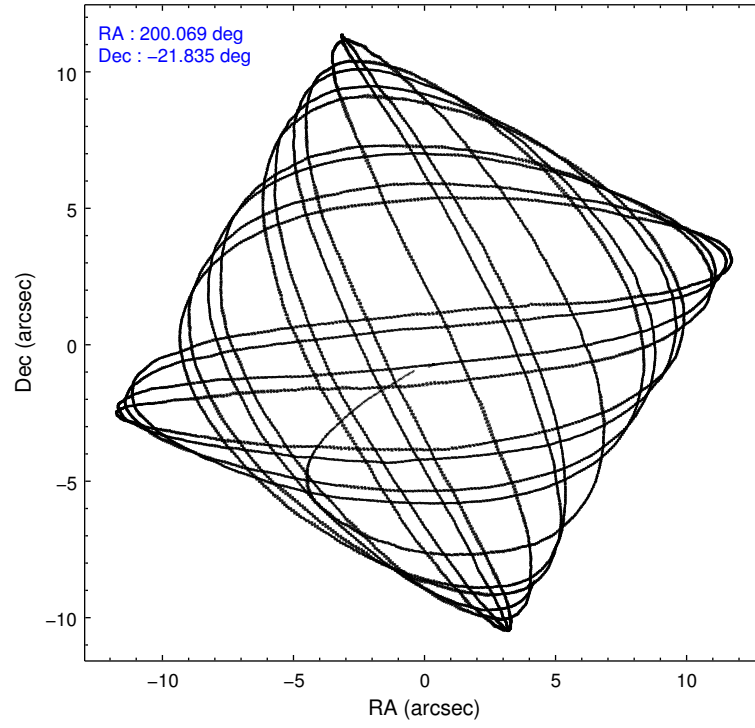
	ccd 0	ccd 1	ccd 2	ccd 3	ccd 6
level 1 events	58050	65546	63848	63446	64267
rejected events	50625	54407	56718	55756	56823
rejected %	87%	83%	88%	87%	88%

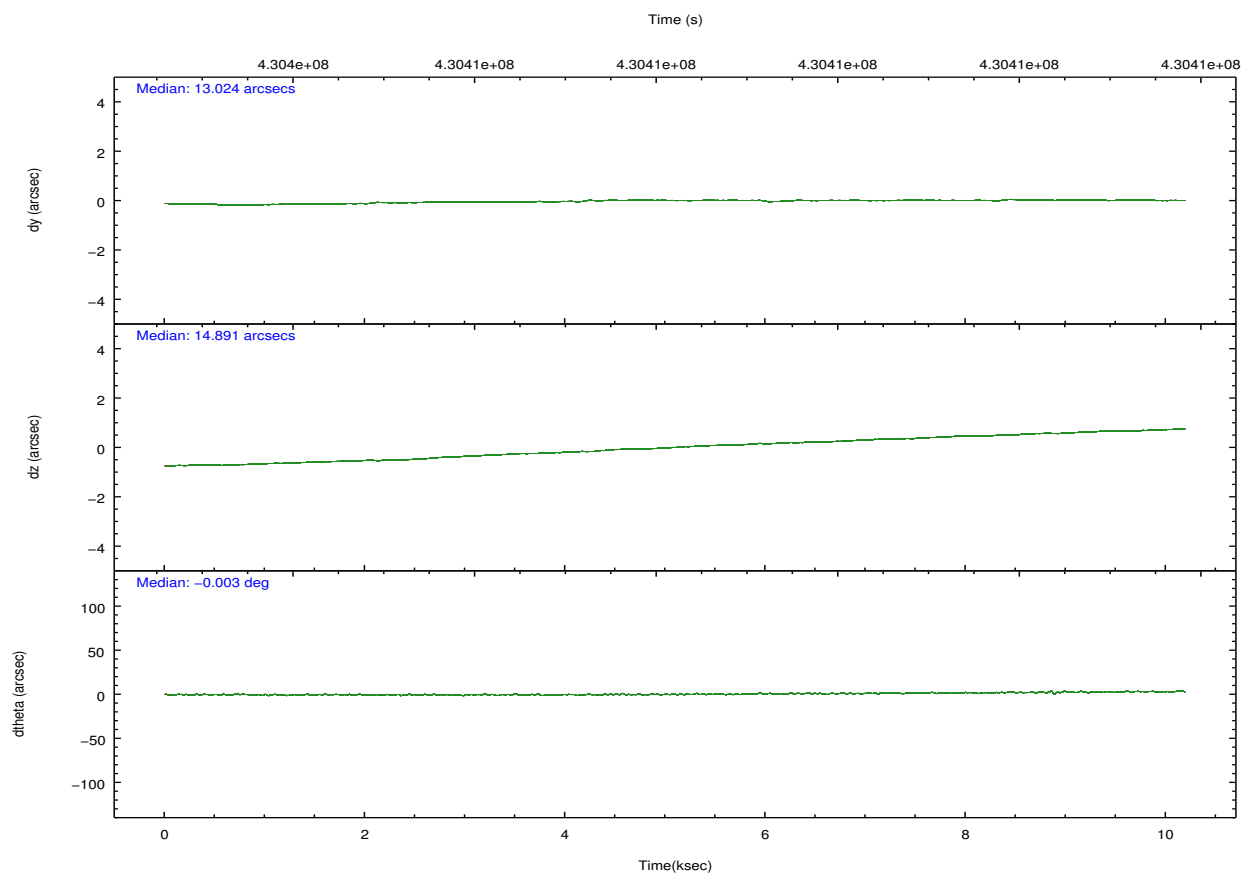
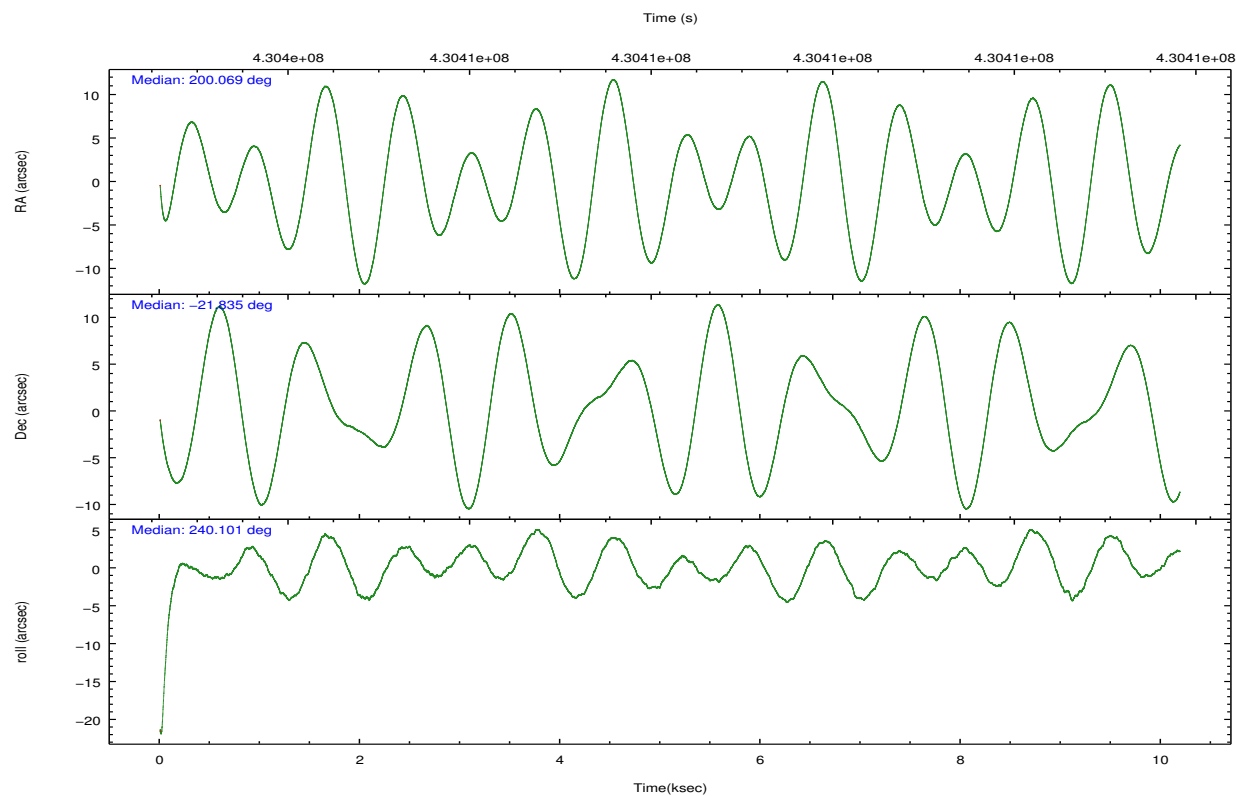
	ccd 0	ccd 1	ccd 2	ccd 3	ccd 6
grade 0 events	2764	5952	2491	3063	2614
	4%	9%	3%	4%	4%
grade 1 events	42	45	33	55	29
	0%	0%	0%	0%	0%
grade 2 events	1743	1881	1714	1615	1614
	3%	2%	2%	2%	2%
grade 3 events	752	793	720	835	791
	1%	1%	1%	1%	1%
grade 4 events	712	790	805	775	768
	1%	1%	1%	1%	1%
grade 5 events	2850	3011	2684	3074	3016
	4%	4%	4%	4%	4%
grade 6 events	1462	1733	1406	1406	1663
	2%	2%	2%	2%	2%
grade 7 events	47725	51341	53995	52623	53772
	82%	78%	84%	82%	83%

2.2 Compared Parameters

Parameter	Planned	Actual	Parameter	Planned	Actual
Instrument	ACIS	ACIS	Obspar format version number	7	7
Detector	ACIS-01236	ACIS-01236	Obspar file type	PREDICTED	ACTUAL
Grating	NONE	NONE	Obspar update status	NONE	UPDATED
Data mode	VFAINT	VFAINT	Number of optional ACIS chips dropped	0	0
Observation mode	POINTING	POINTING	On-chip summing requested	N	N
[deg] Pointing RA	200.068759	200.0689364387247	Subarray requested	NONE	NONE
[deg] Pointing Dec	-21.807614	-21.83514896141473	Alternating exposures requested	N	N
[deg] Pointing Roll	239.893846	240.1025704917864	[s] Primary exposure time	0.000000	3.1
[mm] SIM focus pos	-0.782348	-0.7809083437167272			
[mm] SIM defocus	0	0.001439871863259334			
[mm] SIM translation stage pos	-233.592463	-233.5874344608287			
[mm] SIM translation stage offset	0	-0.005018542100998502			
[s] Observation start time (MET)	430403300.184000	430402236.23601			
Observation start date	2011-08-22T12:27:14	2011-08-22T12:10:36			
[s] Observation end time (MET)	430413300.184000	430414152.88663			
Observation end date	2011-08-22T15:13:54	2011-08-22T15:29:12			
Read mode	TIMED	TIMED			

2.3 Aspect



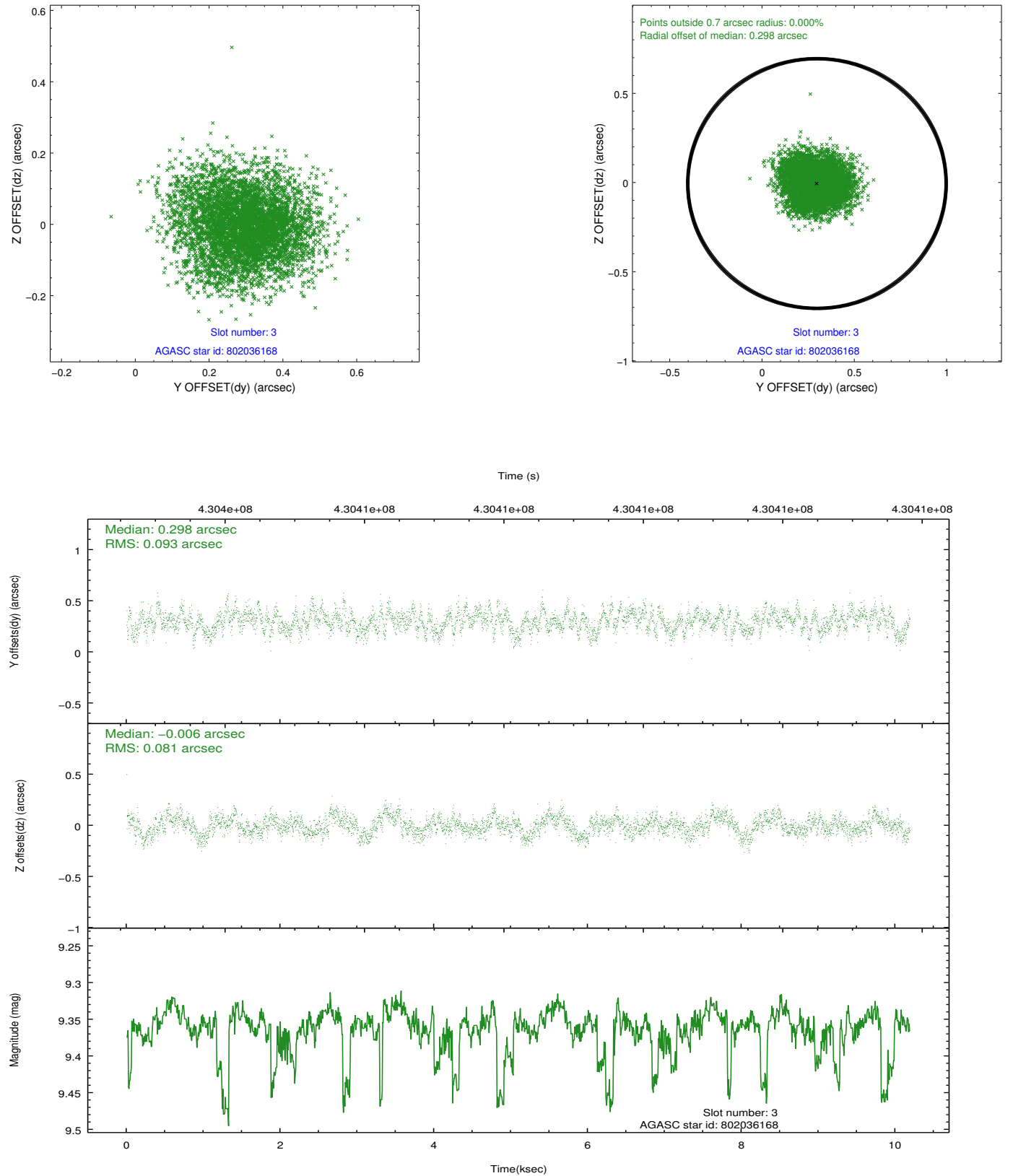


Slot Statistics

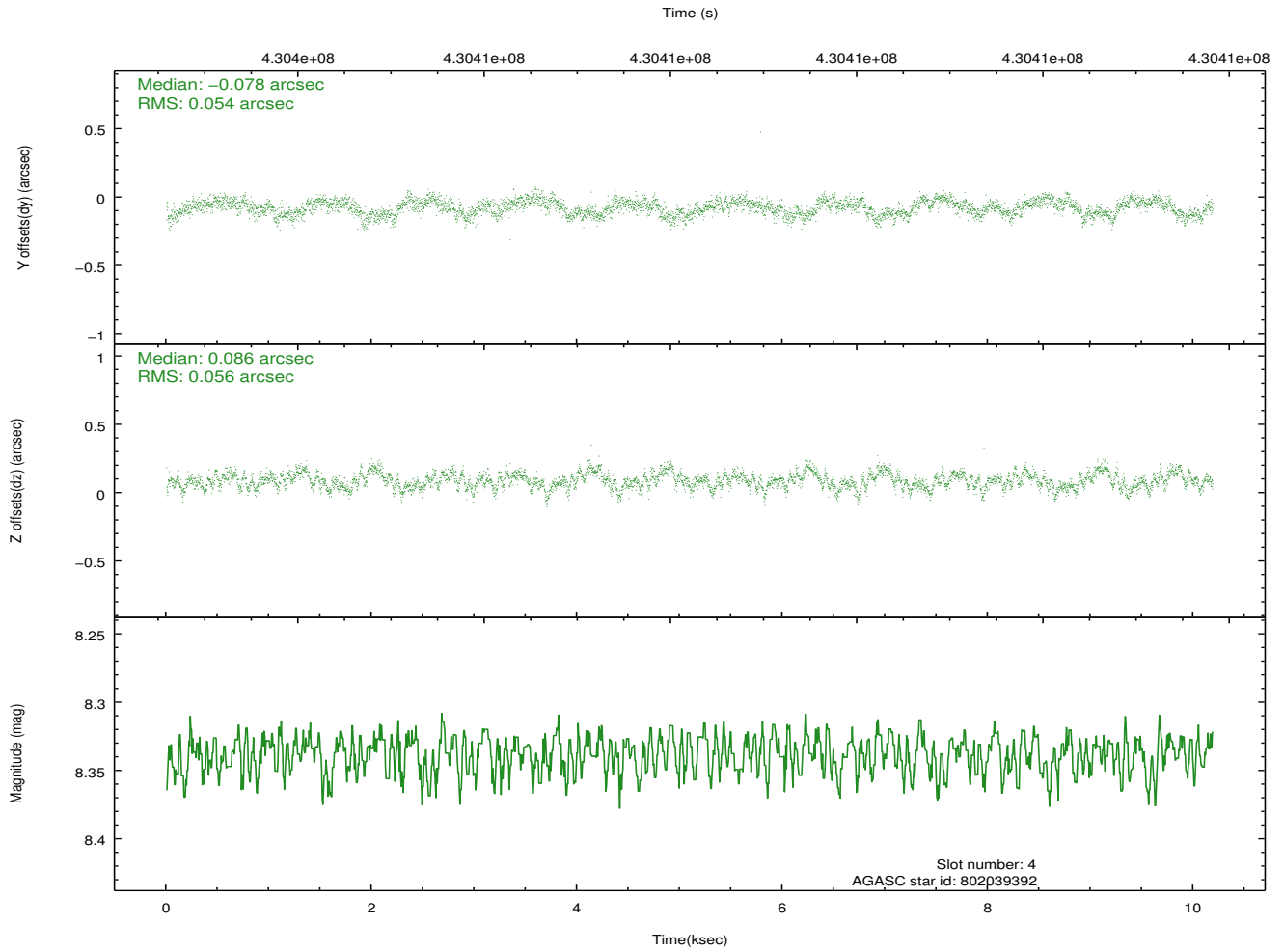
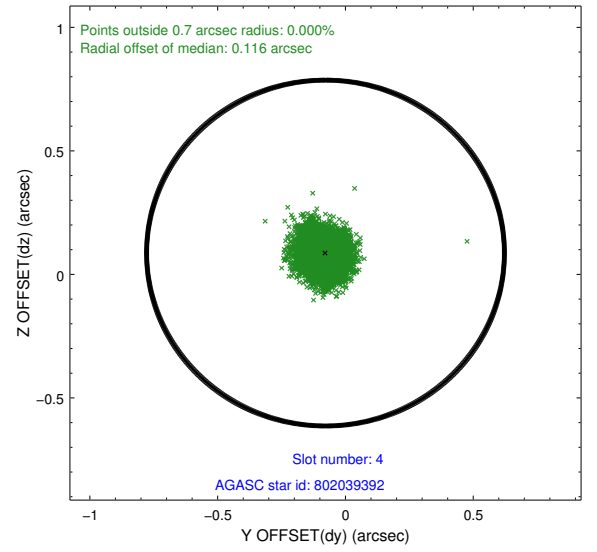
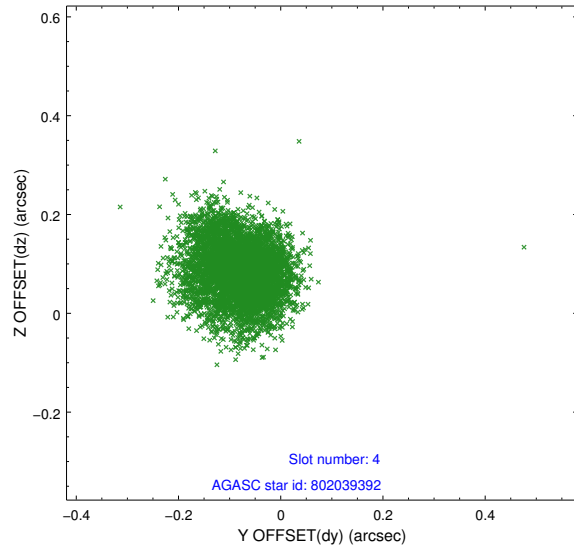
slot	status	id	mag	n_pts	med_dy	med_dz	dr1	dr2	ra	dec	mean_y	mean_z
0	FID	ACIS-I-1	7.12	2485	0.046	-0.015	0.029	0.041	0.000000	0.000000	926.58	-838.47
1	FID	ACIS-I-5	7.12	2485	-0.224	0.047	0.008	0.014	0.000000	0.000000	-1821.53	1058.78
2	FID	ACIS-I-6	7.12	2485	0.086	0.039	0.024	0.035	0.000000	0.000000	391.57	1703.89
3	GUIDE	802036168	9.36	4942	0.298	-0.006	0.132	0.209	199.255561	-22.029546	2059.01	-1942.91
4	GUIDE	802039392	8.34	4969	-0.078	0.086	0.083	0.131	199.895767	-21.228025	-1512.81	-1549.40
5	GUIDE	803734768	8.04	4969	0.169	-0.295	0.107	0.166	200.127944	-22.135228	921.29	761.77
6	GUIDE	803734432	7.15	4970	-0.100	0.034	0.070	0.114	200.263479	-22.383024	1467.39	1600.56
7	GUIDE	803737040	7.86	4968	-0.285	0.188	0.074	0.120	200.707493	-21.414068	-2295.51	1143.35

2.4 Star Slots

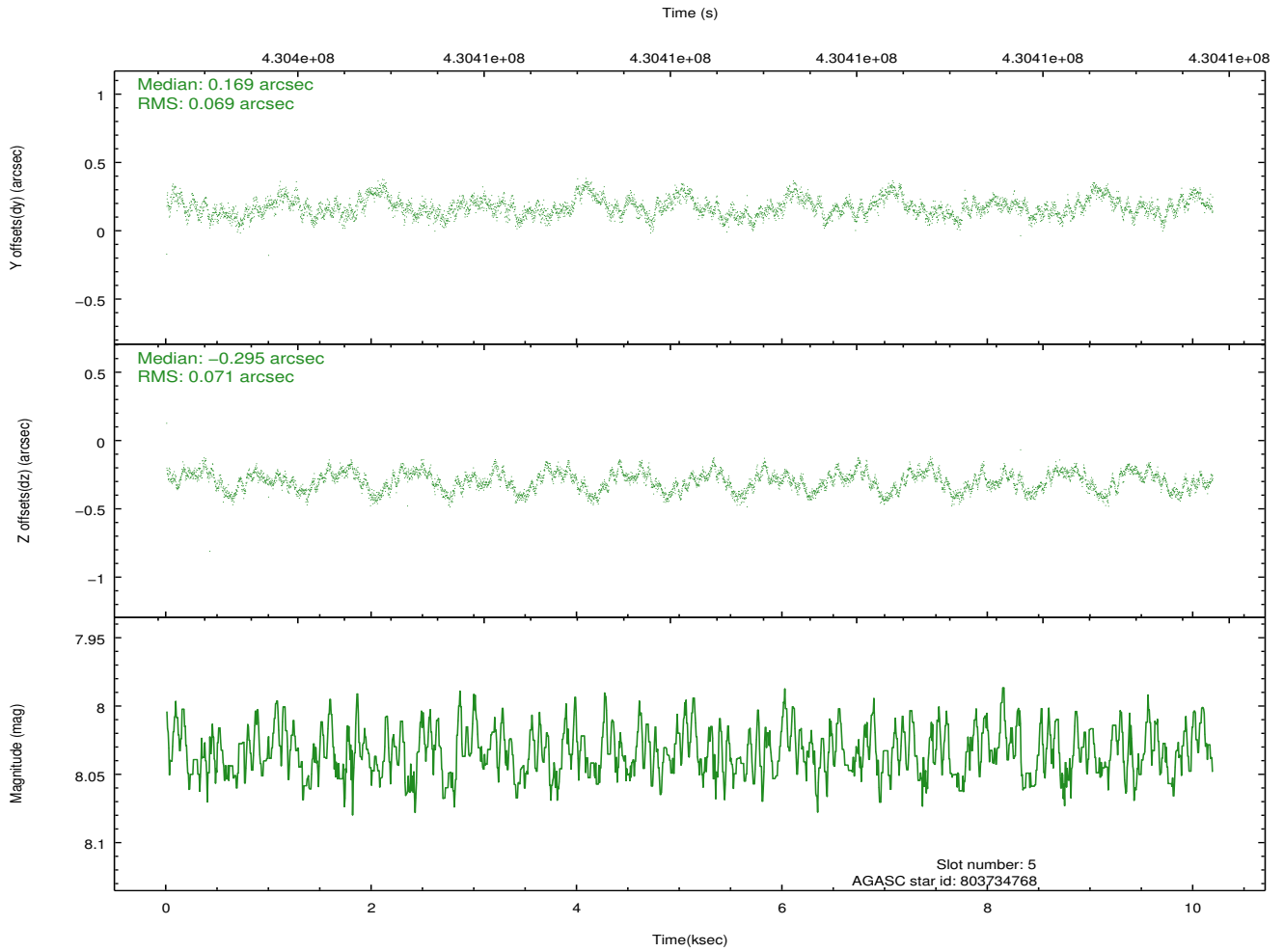
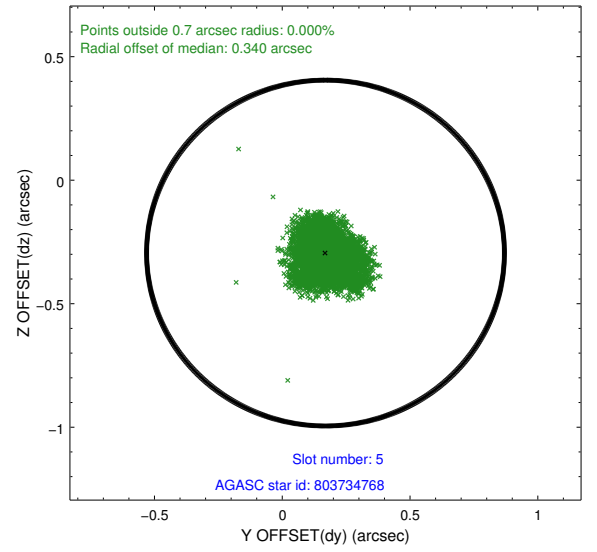
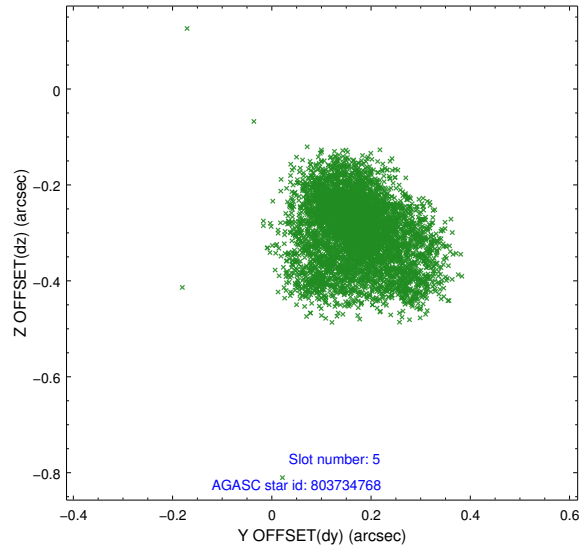
2.4.1 Slot 3



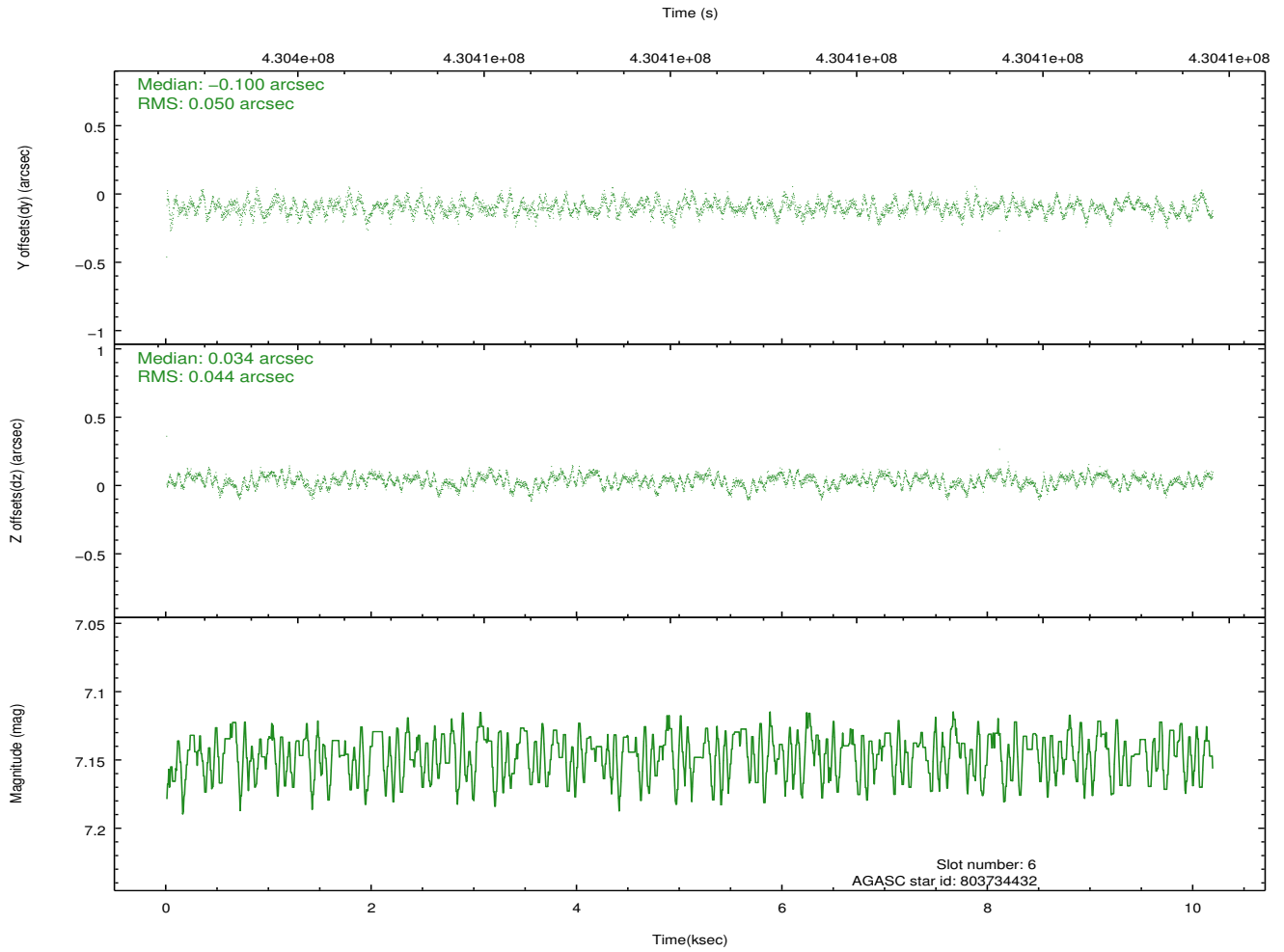
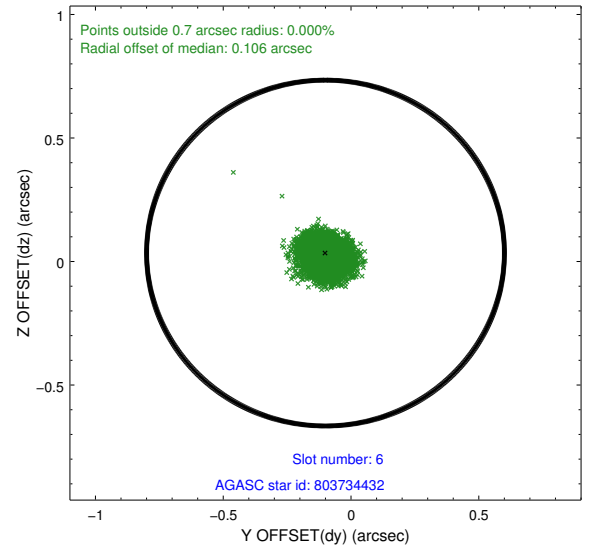
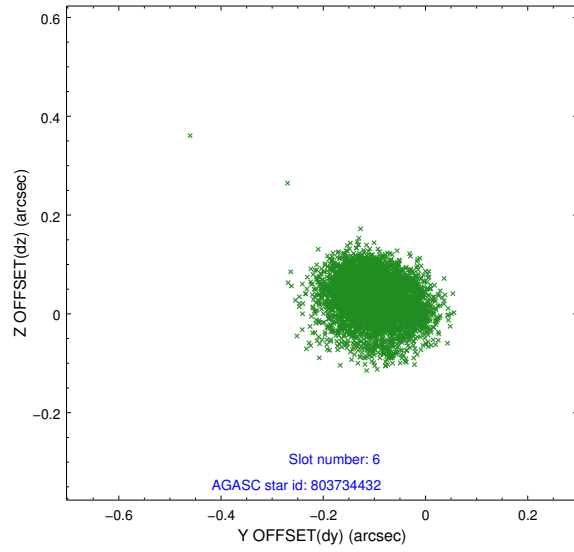
2.4.2 Slot 4



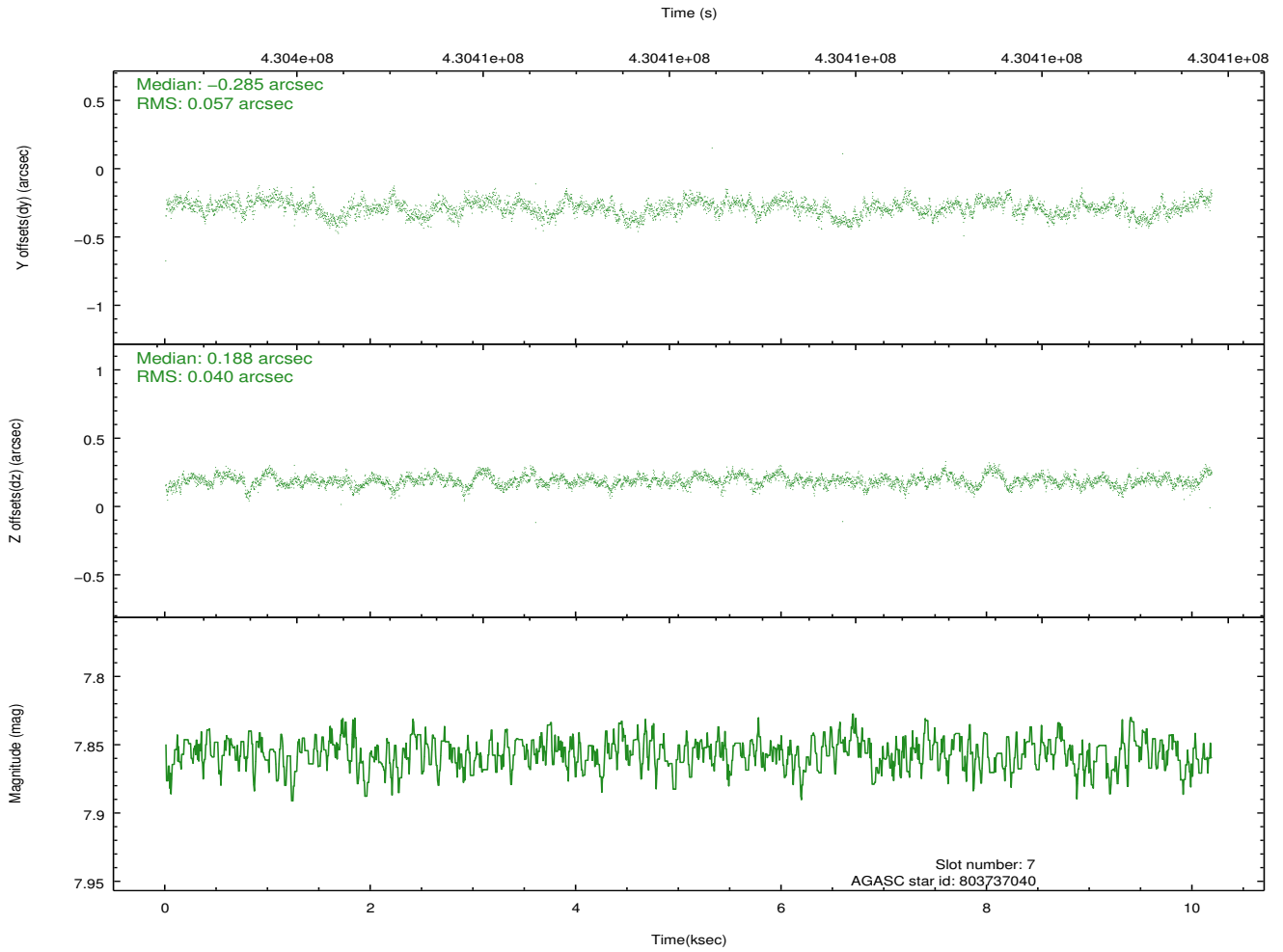
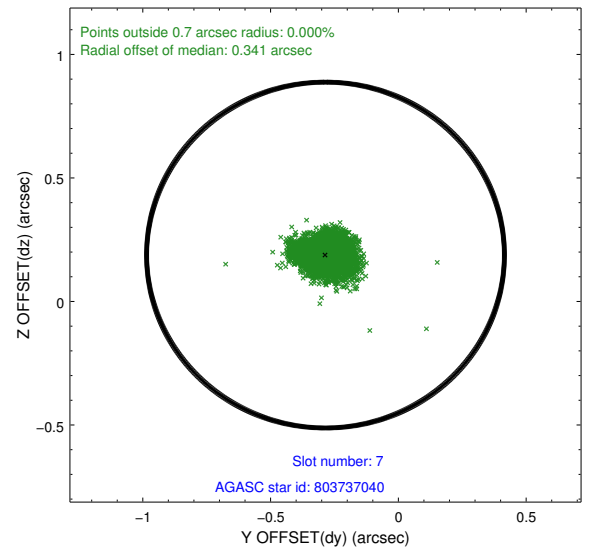
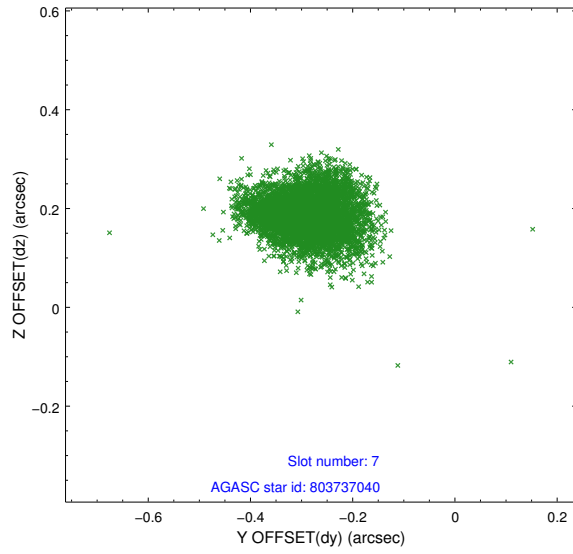
2.4.3 Slot 5



2.4.4 Slot 6

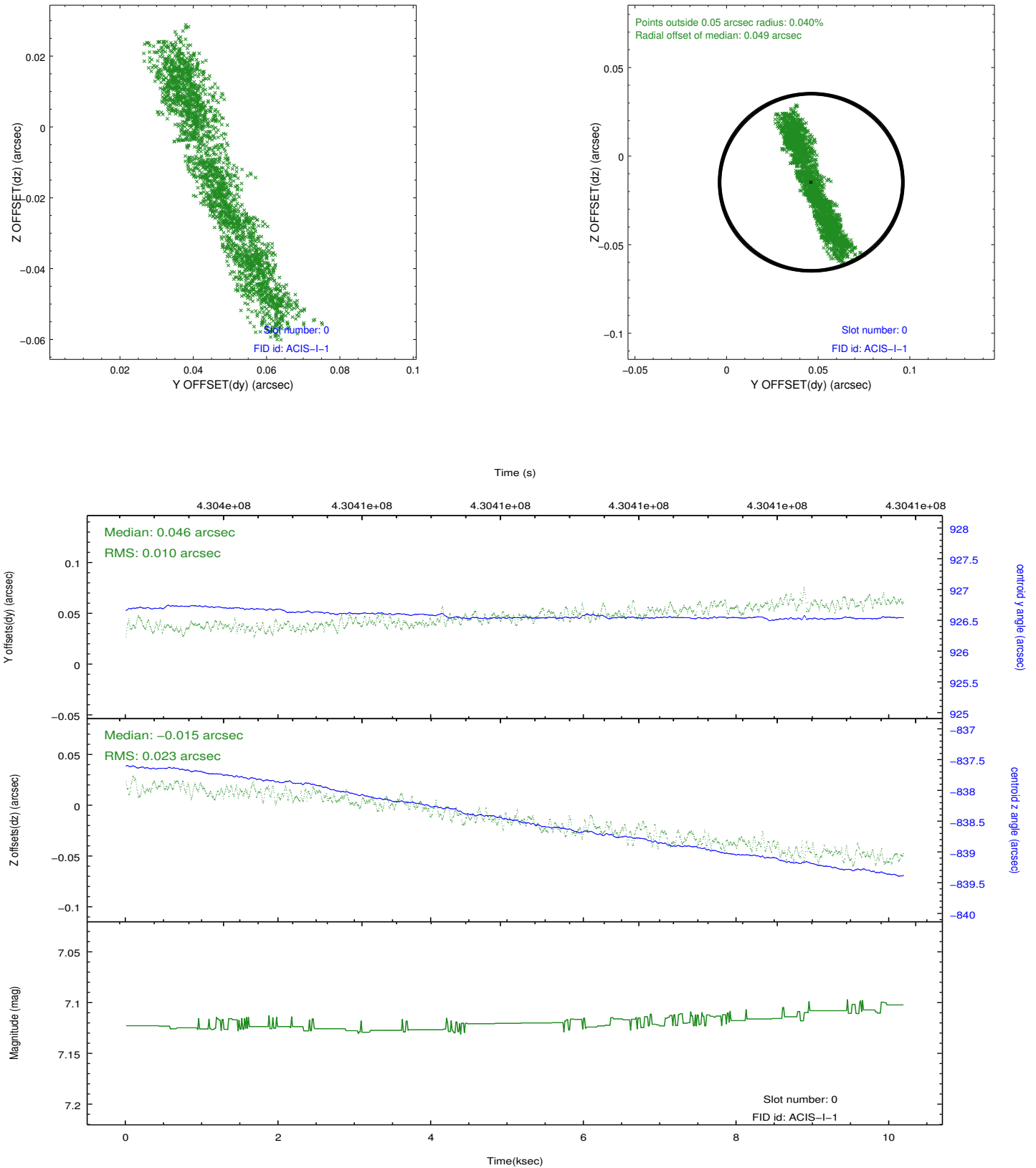


2.4.5 Slot 7

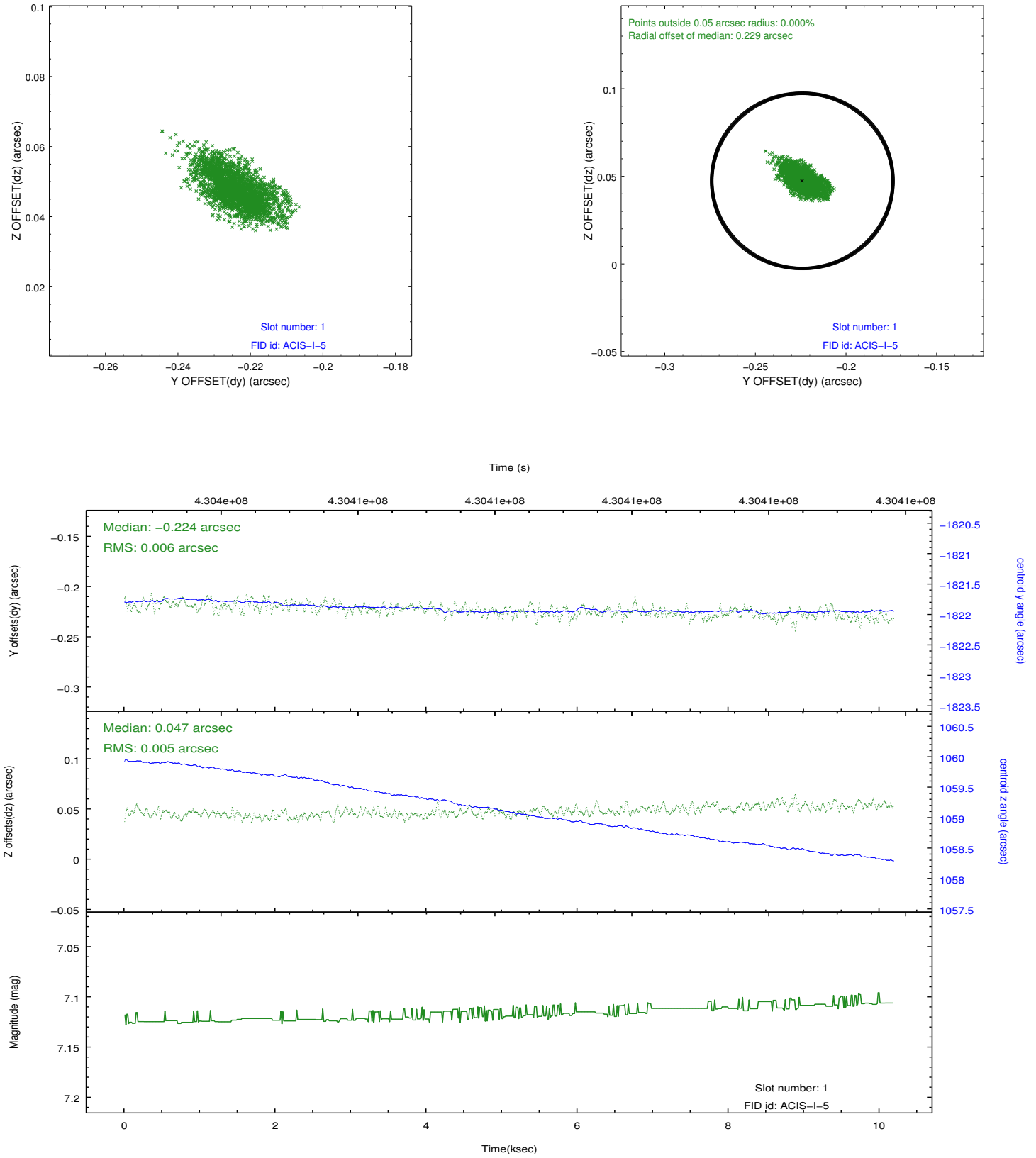


2.5 FID Slots

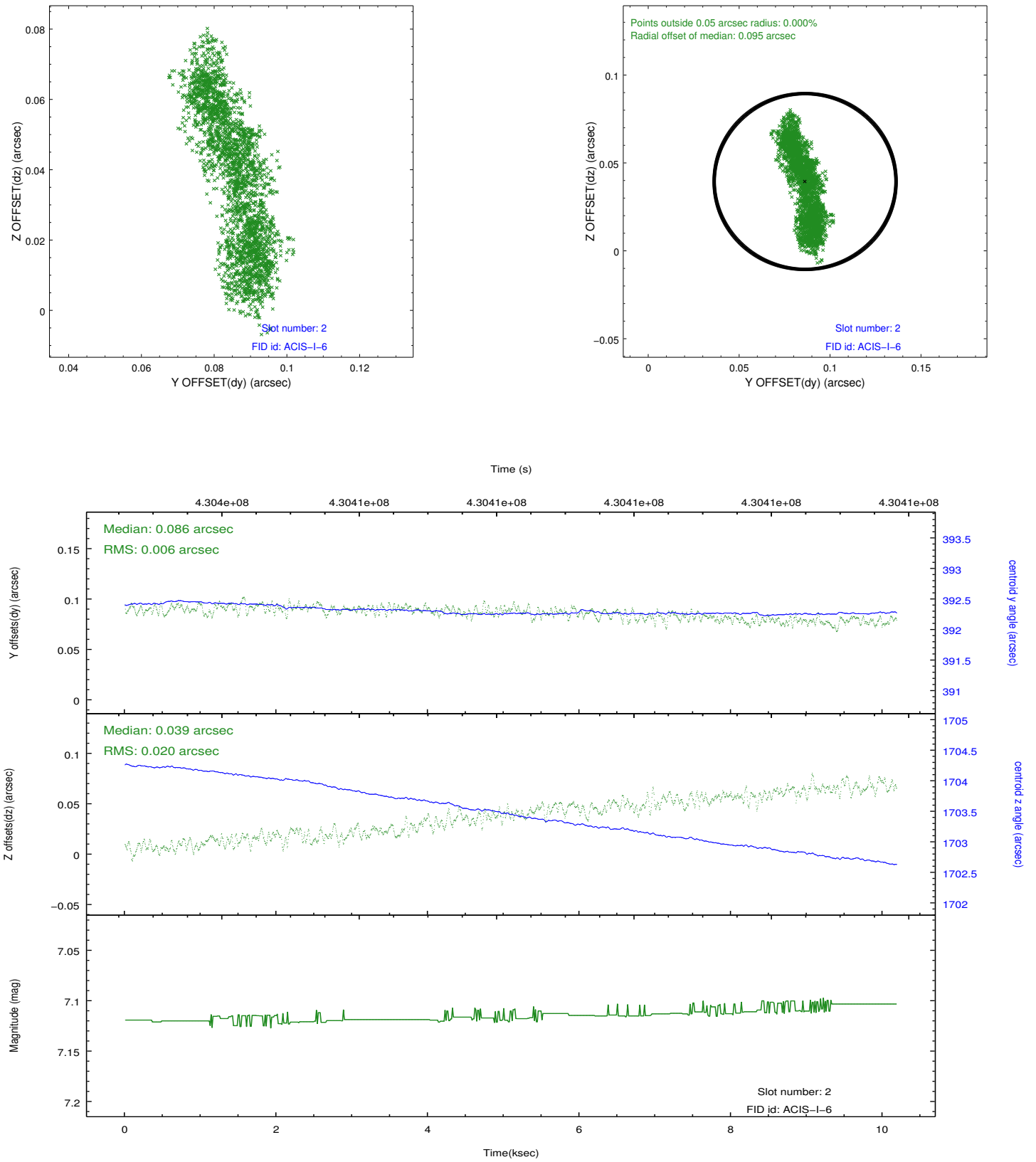
2.5.1 Slot 0



2.5.2 Slot 1



2.5.3 Slot 2



A Summary

A.1 Status

V&V Scientist	Beth Sundheim
V&V Date (YYYY-MM-DD)	2012.02.22
V&V Edition	1
V&V Disposition and Status	OK
V&V Charge Time	10.052767462671

A.2 Comments