

V&V Reference Report

L2 ASCDS Version : 8.4.3

Observation 12769 - L2 Version 2
Chandra X-Ray Center

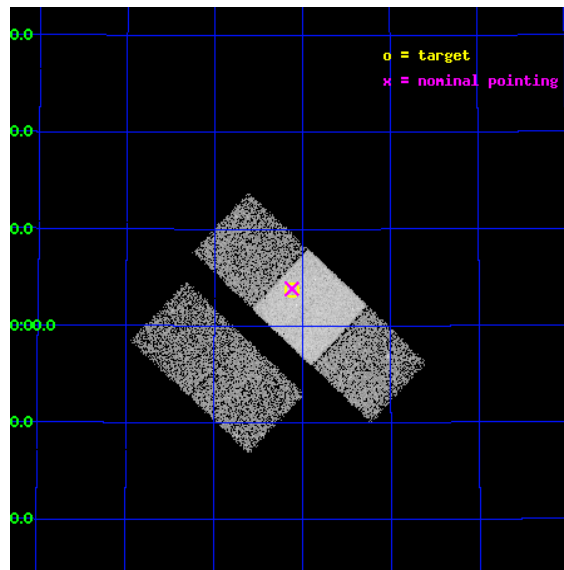
L2 Processing Date : Feb 29 2012

Contents

1	Front	2
2	OBI	3
2.1	OBI	3
2.1.1	Images	3
2.1.2	Bias	3
2.1.3	Parameters	4
2.1.4	Events	4
2.2	Compared Parameters	5
2.3	Aspect	6
2.4	Star Slots	9
2.4.1	Slot 3	9
2.4.2	Slot 4	10
2.4.3	Slot 5	11
2.4.4	Slot 6	12
2.4.5	Slot 7	13
2.5	FID Slots	14
2.5.1	Slot 0	14
2.5.2	Slot 1	15
2.5.3	Slot 2	16
A	Summary	17
A.1	Status	17
A.2	Comments	17

1 Front

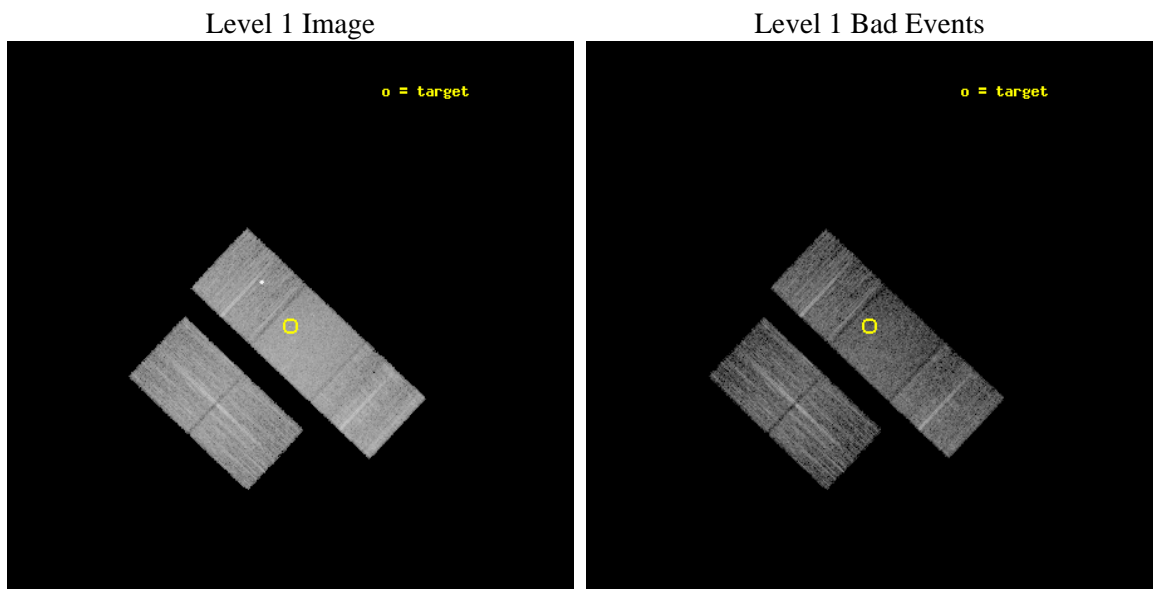
seq_num	702405	Sequence number
obs_id	12769	Observation id
title	X-ray Properties of 2MASS Selected BALQSOs	Proposal title
observer	Dr. Xinyu Dai	Principal investigator
object	SDSSJ144707.41+520340.0	Source name
dtcycle	0	
cycle	P	events from which exps? Prim/Second/Both
ra_targ	221.780833	Observer's specified target RA [deg]
dec_targ	52.061139	Observer's specified target Dec [deg]
ra_nom	221.78002505439	Nominal RA [deg]
dec_nom	52.064136000227	Nominal Dec [deg]
roll_nom	43.371190472978	Nominal Roll [deg]
revision	2	Processing version of data
ontime	9343.037730515	Sum of GTIs [s]
livetime	9220.9640643215	Livetime [s]
ontime2	9342.8735705018	Sum of GTIs [s]
ontime3	9339.8146601915	Sum of GTIs [s]
ontime6	9342.9966905117	Sum of GTIs [s]
ontime7	9343.037730515	Sum of GTIs [s]
ontime8	9342.9146105051	Sum of GTIs [s]
l2events	56482	Number of level 2 events



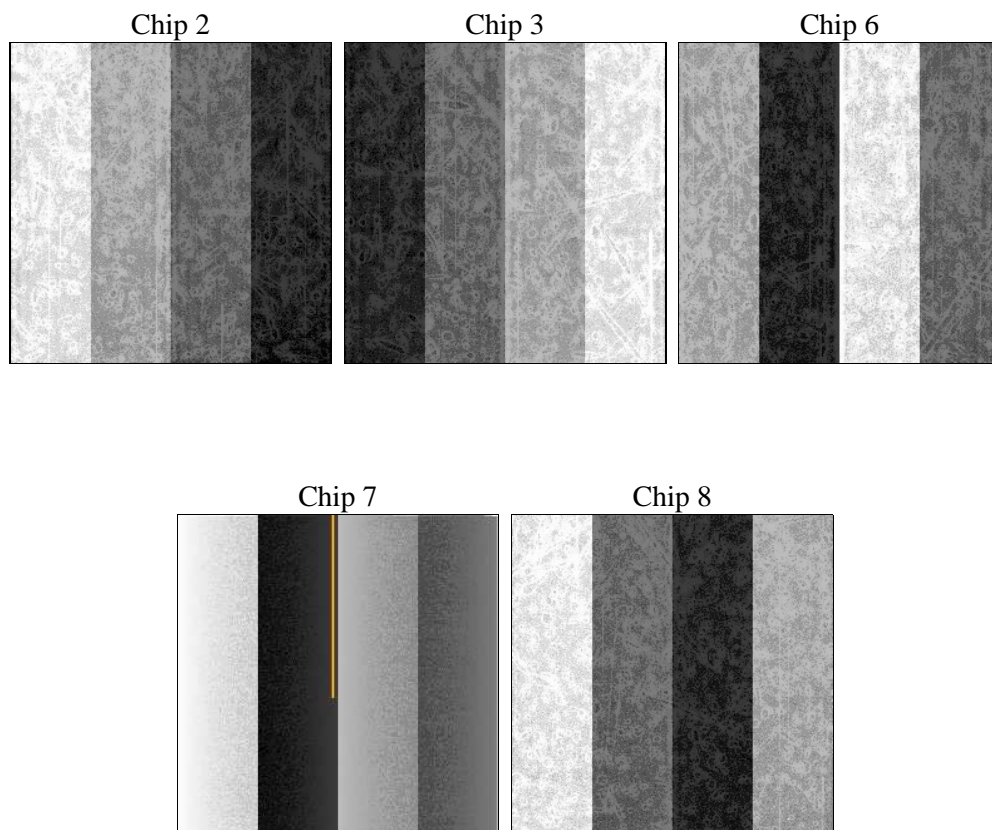
2 OBI

2.1 OBI

2.1.1 Images



2.1.2 Bias



2.1.3 Parameters

obi_num	0	Obi number	sched_exp_time	9300.000000	[s] Scheduled observation exposure time
ascdsver	8.4.3	Processing system revision	ontime	9343.037730515	Sum of GTIs [s]
caldsver	4.4.8	 	ontime2	9342.8735705018	Sum of GTIs [s]
date	2012-02-29T11:58:38	Date and time of file creation	ontime3	9339.8146601915	Sum of GTIs [s]
revision	2	Processing version of data	ontime6	9342.9966905117	Sum of GTIs [s]
			ontime7	9343.037730515	Sum of GTIs [s]
			ontime8	9342.9146105051	Sum of GTIs [s]
			l1events	334715	Number of level 1 events

2.1.4 Events

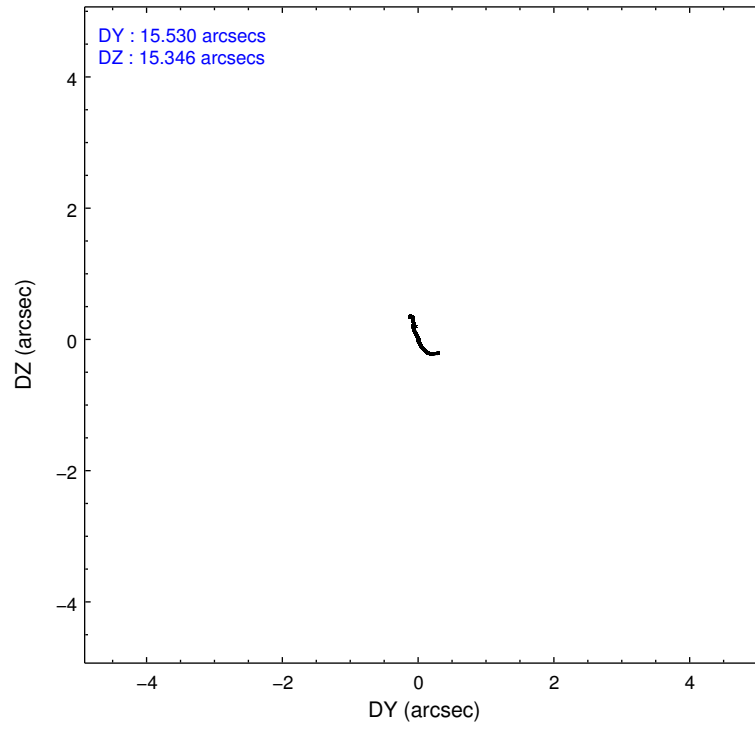
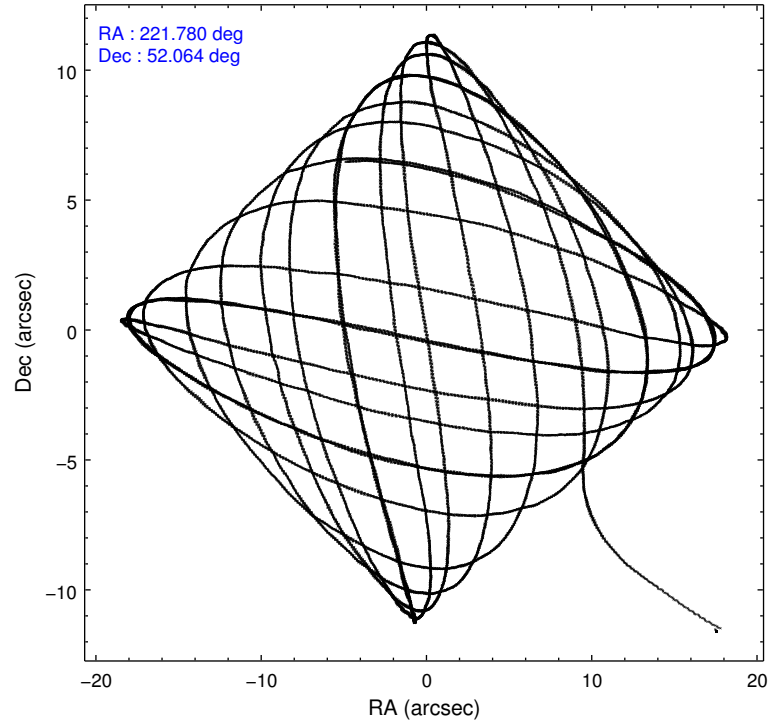
	ccd 2	ccd 3	ccd 6	ccd 7	ccd 8
level 1 events	58274	58553	63107	76982	77799
rejected events	52029	52289	53392	42970	57430
rejected %	89%	89%	84%	55%	73%

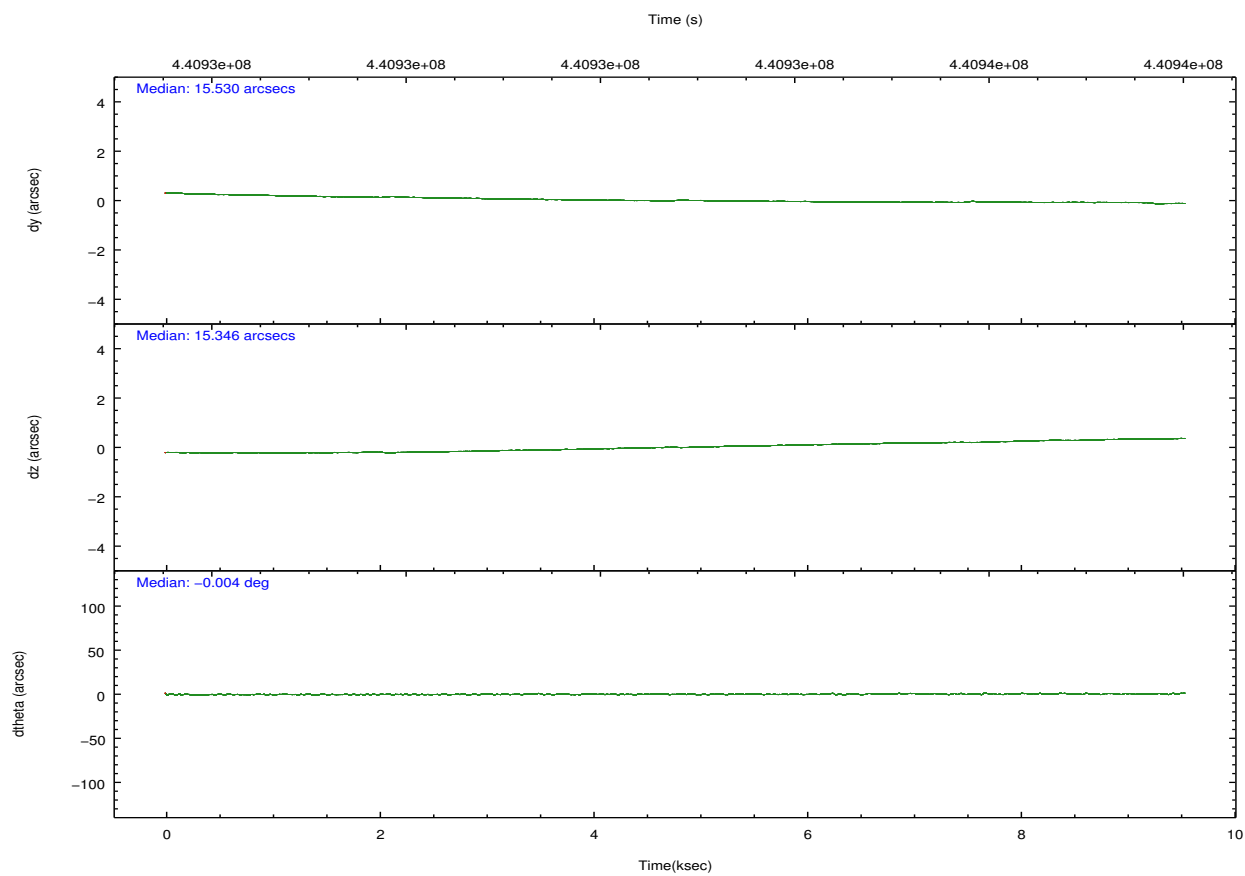
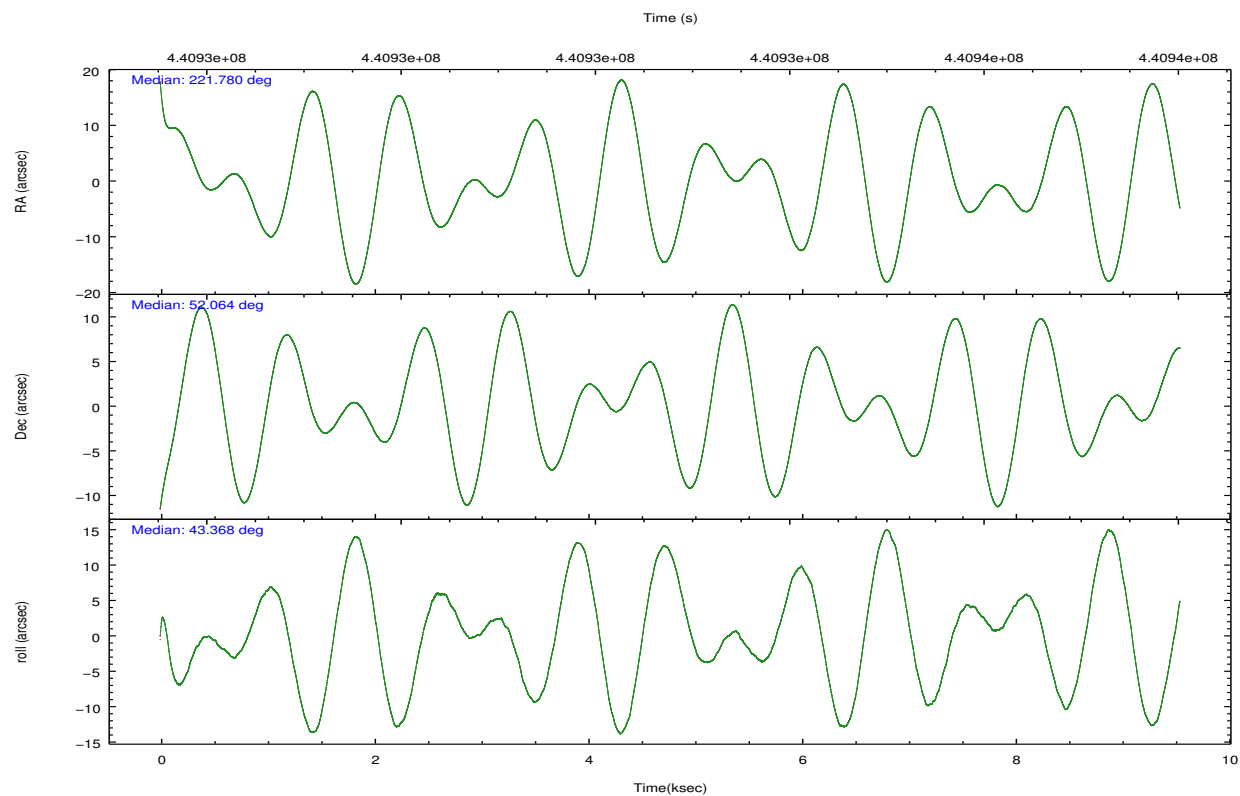
	ccd 2	ccd 3	ccd 6	ccd 7	ccd 8
grade 0 events	2227	2155	5198	3193	6028
	3%	3%	8%	4%	7%
grade 1 events	33	40	61	91	52
	0%	0%	0%	0%	0%
grade 2 events	1496	1457	1571	6906	4713
	2%	2%	2%	8%	6%
grade 3 events	630	667	693	3028	2137
	1%	1%	1%	3%	2%
grade 4 events	678	679	712	2897	2053
	1%	1%	1%	3%	2%
grade 5 events	2447	2783	2883	8096	4193
	4%	4%	4%	10%	5%
grade 6 events	1217	1309	1543	17998	5451
	2%	2%	2%	23%	7%
grade 7 events	49546	49463	50446	34773	53172
	85%	84%	79%	45%	68%

2.2 Compared Parameters

Parameter	Planned	Actual	Parameter	Planned	Actual
Instrument	ACIS	ACIS	Obspar format version number	7	7
Detector	ACIS-23678	ACIS-23678	Obspar file type	PREDICTED	ACTUAL
Grating	NONE	NONE	Obspar update status	NONE	UPDATED
Data mode	VFAINT	VFAINT	CCD I0 on	N	N
Observation mode	POINTING	POINTING	CCD I1 on	N	N
[deg] Pointing RA	221.767768	221.7800250543932	CCD I2 on	O4	Y
[deg] Pointing Dec	52.037813	52.06413600022663	CCD I3 on	O3	Y
[deg] Pointing Roll	43.224224	43.37119047297823	CCD S0 on	N	N
[mm] SIM focus pos	-0.684267	-0.6828225247311905	CCD S1 on	N	N
[mm] SIM defocus	0	0.001444936568705701	CCD S2 on	O2	Y
[mm] SIM translation stage pos	-190.132523	-190.1425803651734	CCD S3 on	Y	Y
[mm] SIM translation stage offset	0	0.01005778216563158	CCD S4 on	O1	Y
[s] Observation start time (MET)	440928231.184000	440927267.13916	CCD S5 on	N	N
Observation start date	2011-12-22T08:02:45	2011-12-22T07:47:47	Number of optional ACIS chips dropped	0	0
[s] Observation end time (MET)	440937531.184000	440938185.95224	On-chip summing requested	N	N
Observation end date	2011-12-22T10:37:45	2011-12-22T10:49:45	Subarray requested	NONE	NONE
Read mode	TIMED	TIMED	Alternating exposures requested	N	N
			[s] Primary exposure time	0.000000	3.1

2.3 Aspect



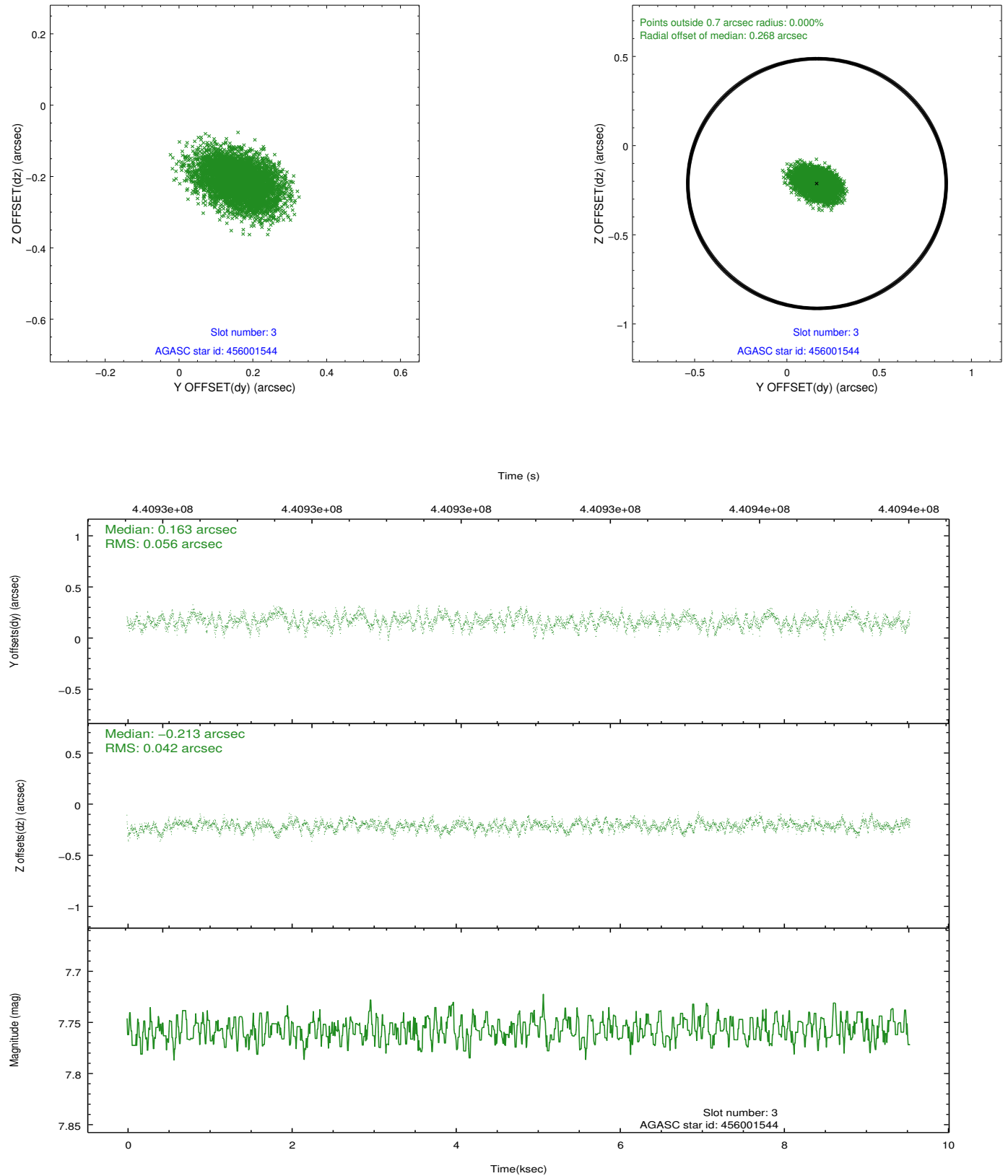


Slot Statistics

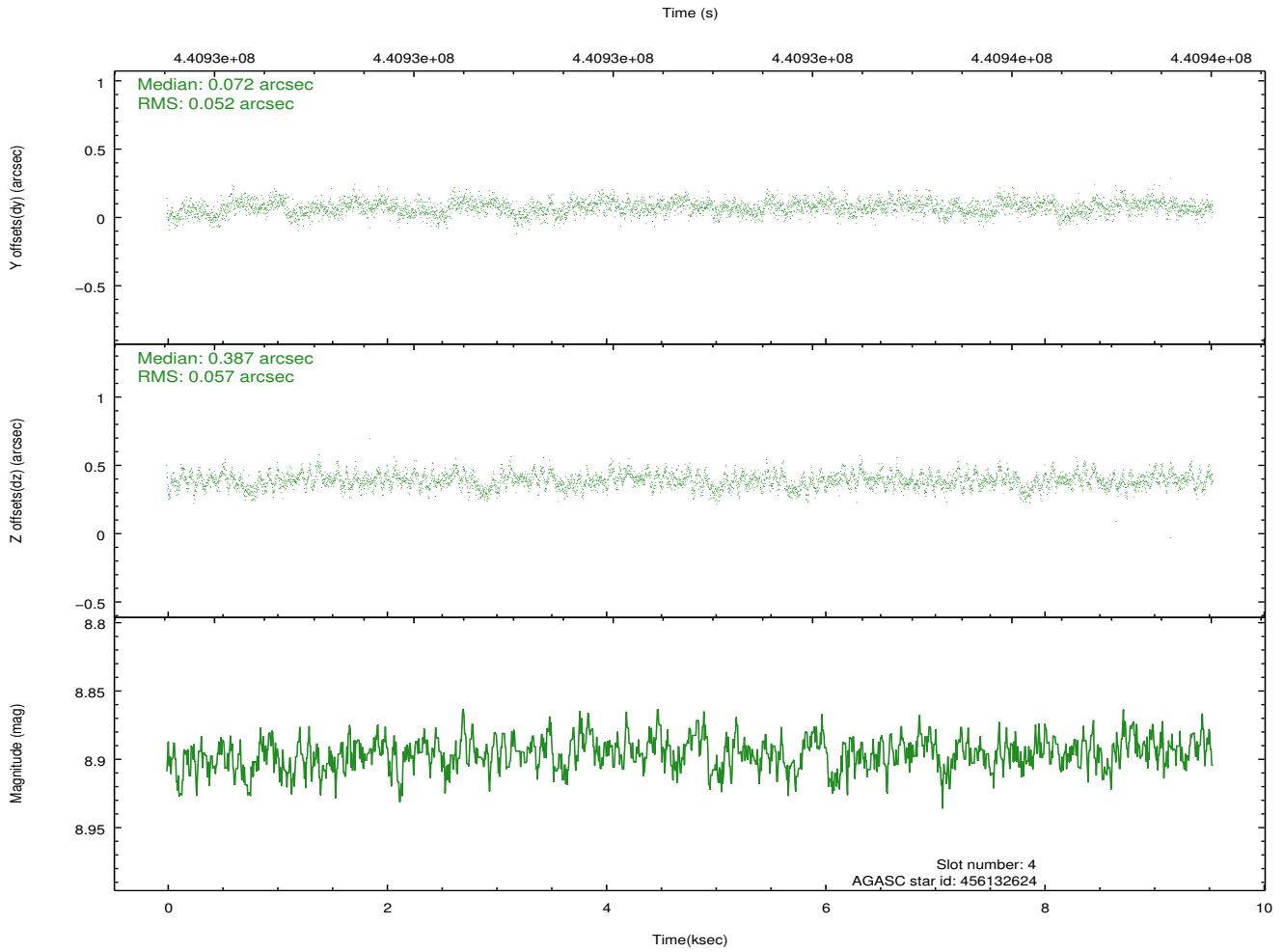
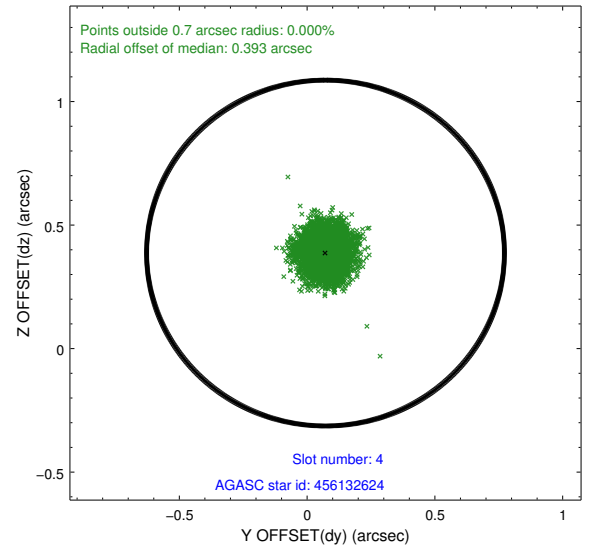
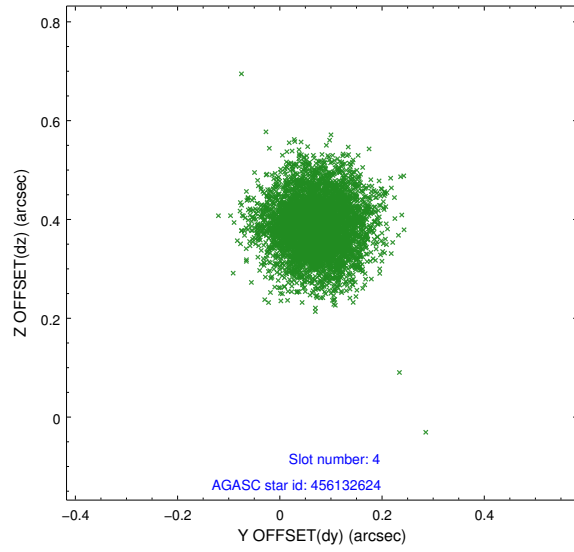
slot	status	id	mag	n_pts	med_dy	med_dz	dr1	dr2	ra	dec	mean_y	mean_z
0	FID	ACIS-S-2	7.00	2329	-0.130	-0.014	0.007	0.011	0.000000	0.000000	-768.68	-1736.71
1	FID	ACIS-S-4	7.09	2329	0.246	0.066	0.005	0.010	0.000000	0.000000	2144.72	171.27
2	FID	ACIS-S-5	7.12	2329	-0.148	-0.044	0.006	0.011	0.000000	0.000000	-1820.82	165.47
3	GUIDE	456001544	7.76	4657	0.163	-0.213	0.075	0.124	220.502950	52.005319	-2105.80	1852.00
4	GUIDE	456132624	8.90	4654	0.072	0.387	0.081	0.131	221.490564	51.626542	-1464.94	-652.84
5	GUIDE	456137528	9.23	4652	0.283	0.219	0.104	0.171	222.113961	51.441847	-903.27	-2094.11
6	GUIDE	505946000	7.63	4656	-0.291	-0.190	0.063	0.101	222.064530	52.625804	1922.62	1099.22
7	GUIDE	505947296	8.15	4654	-0.226	-0.195	0.076	0.122	221.868535	52.824456	2098.94	1914.03

2.4 Star Slots

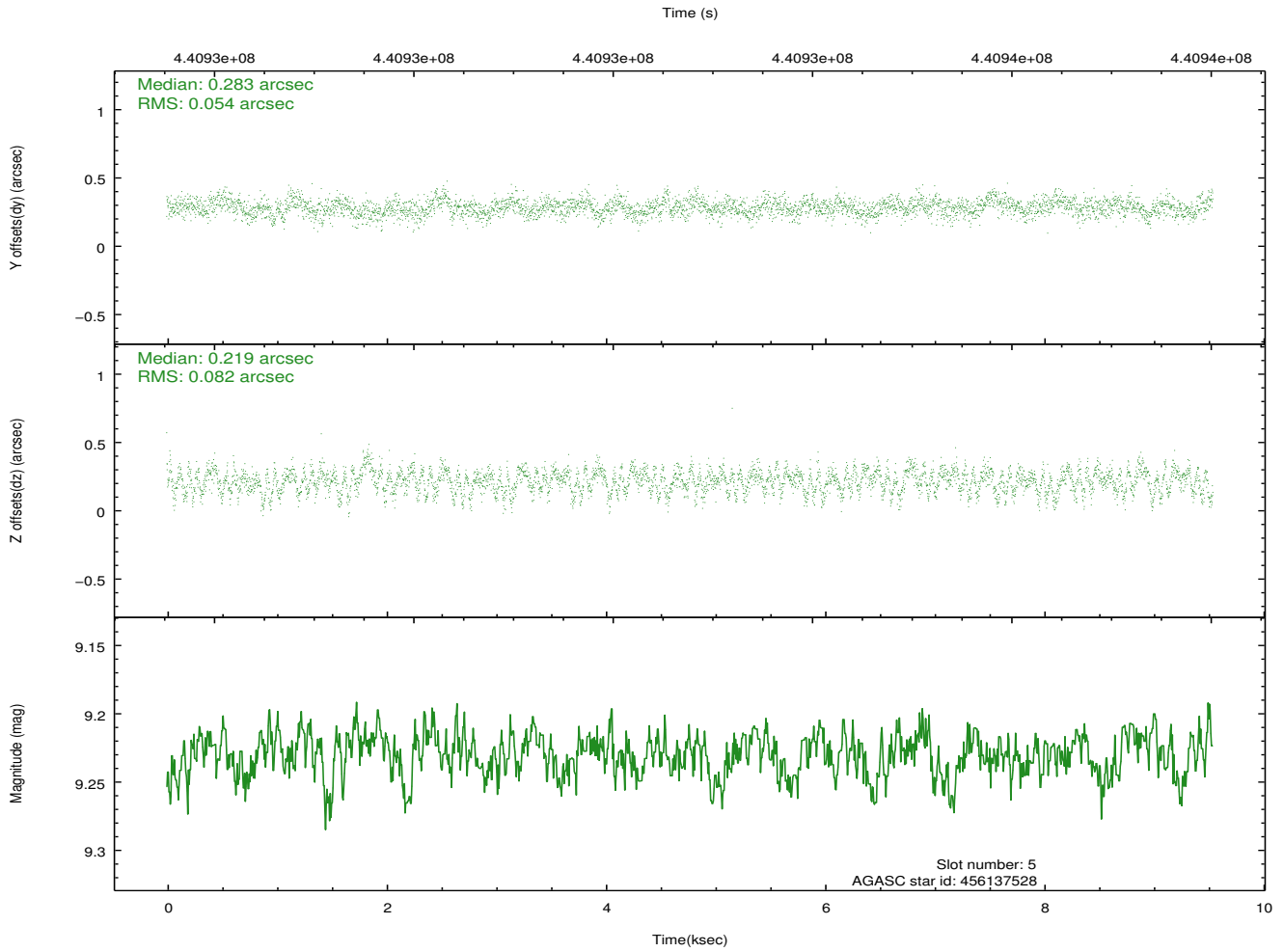
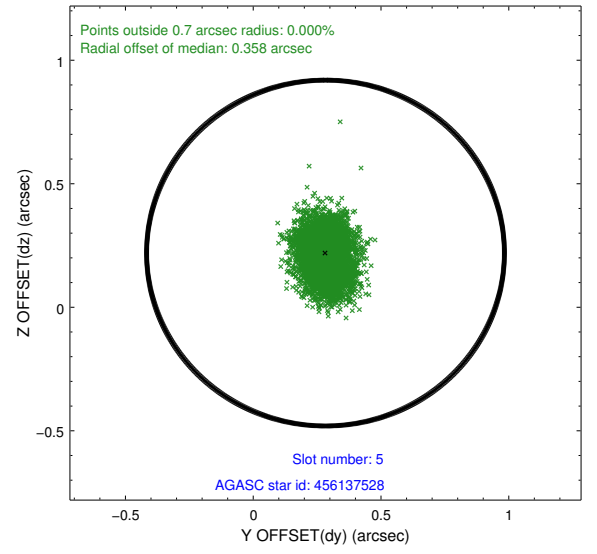
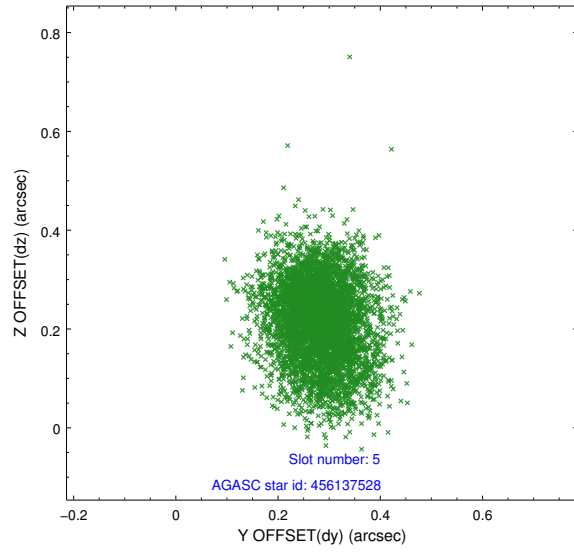
2.4.1 Slot 3



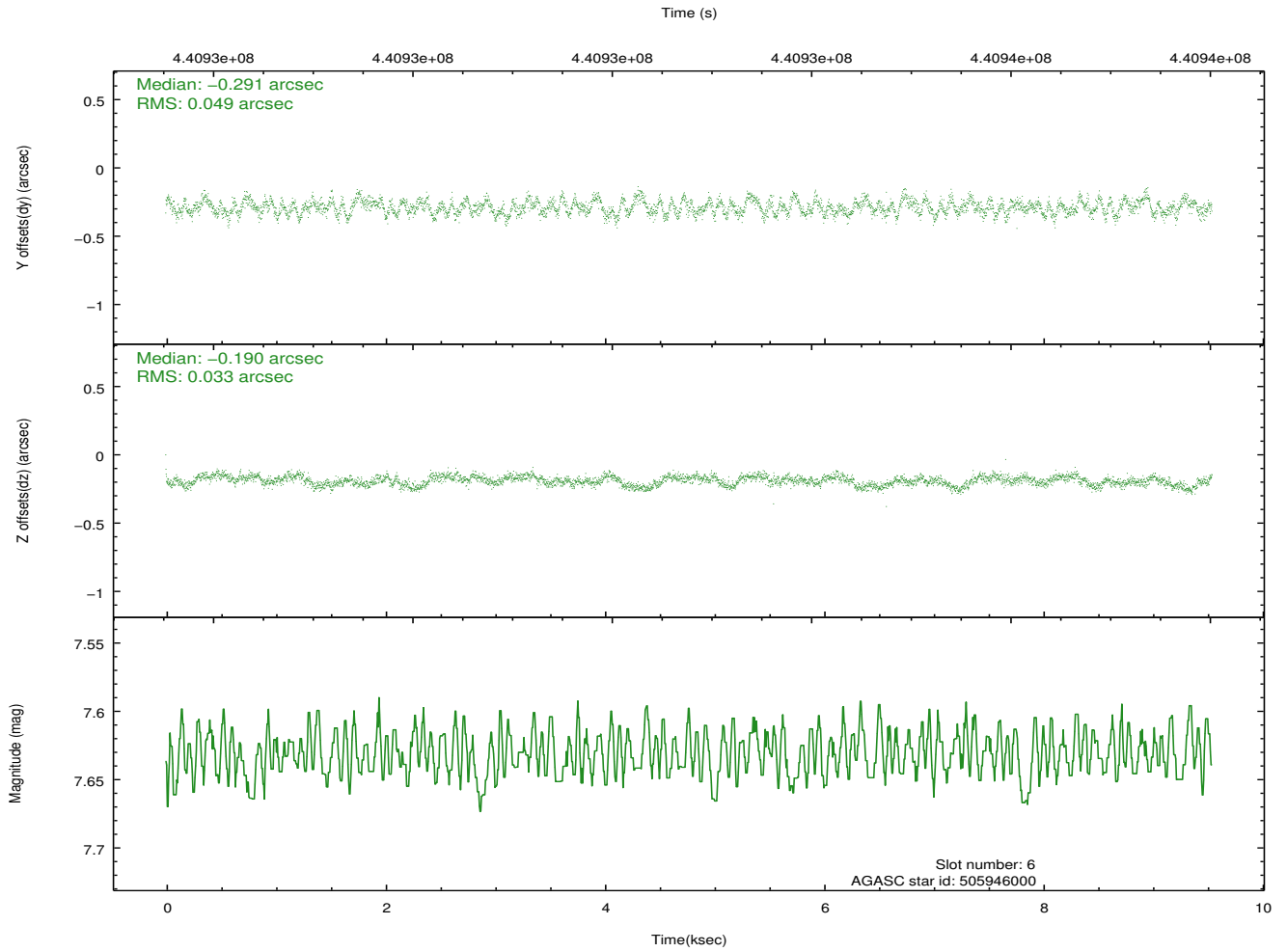
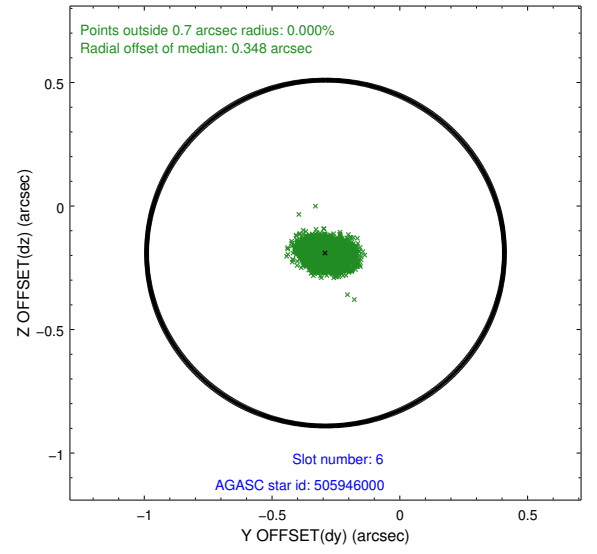
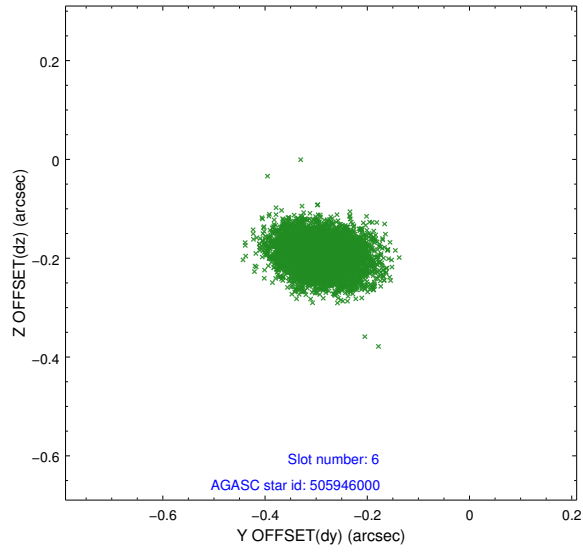
2.4.2 Slot 4



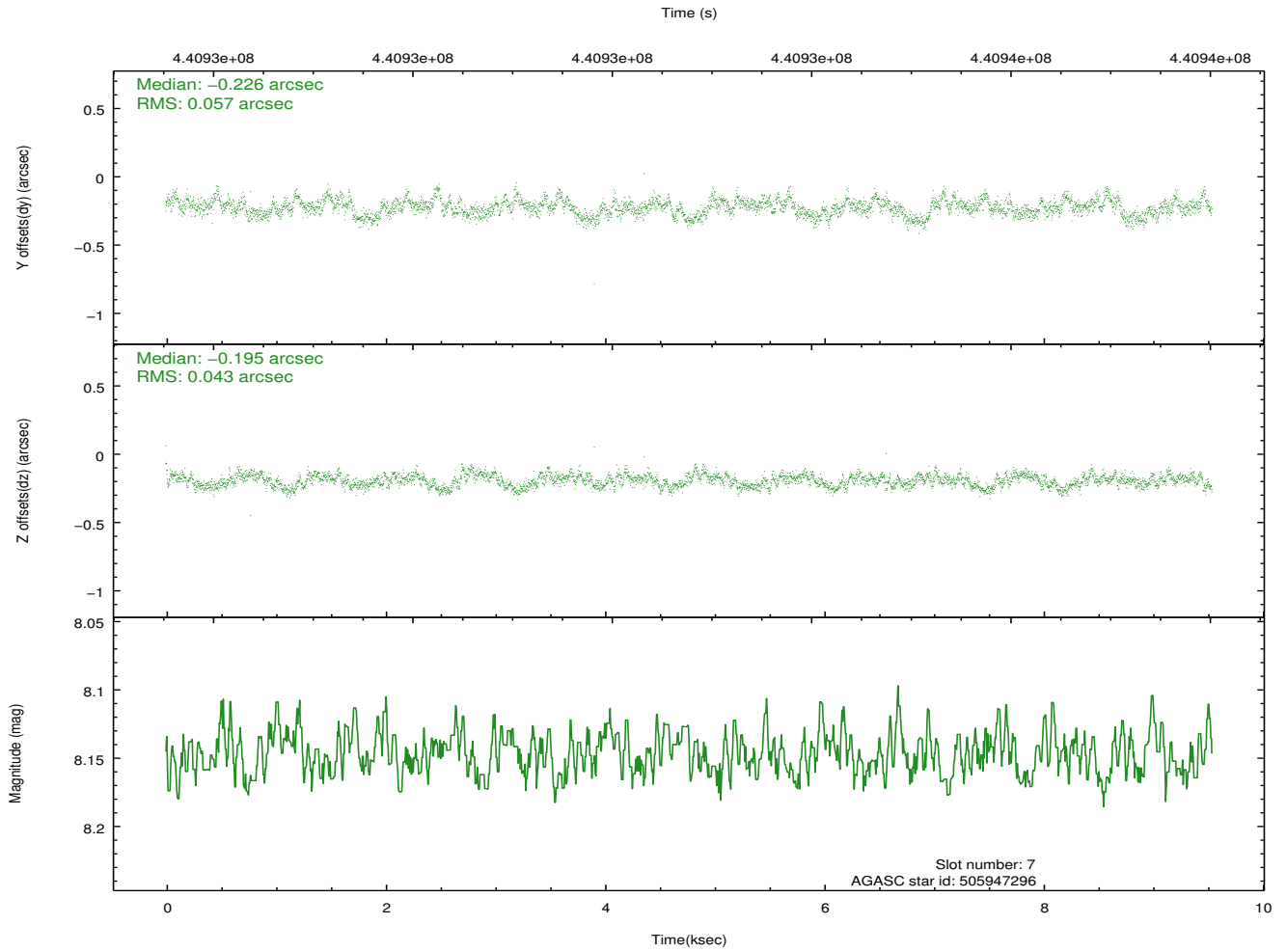
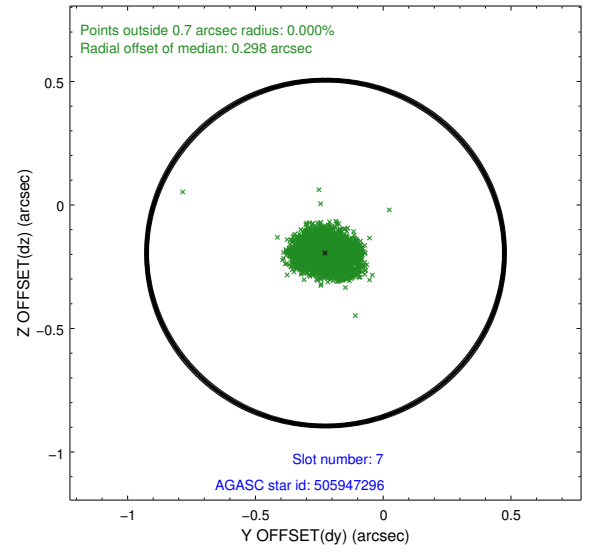
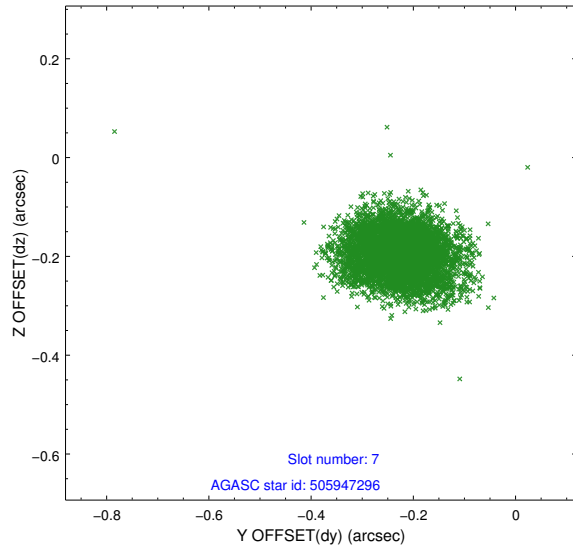
2.4.3 Slot 5



2.4.4 Slot 6

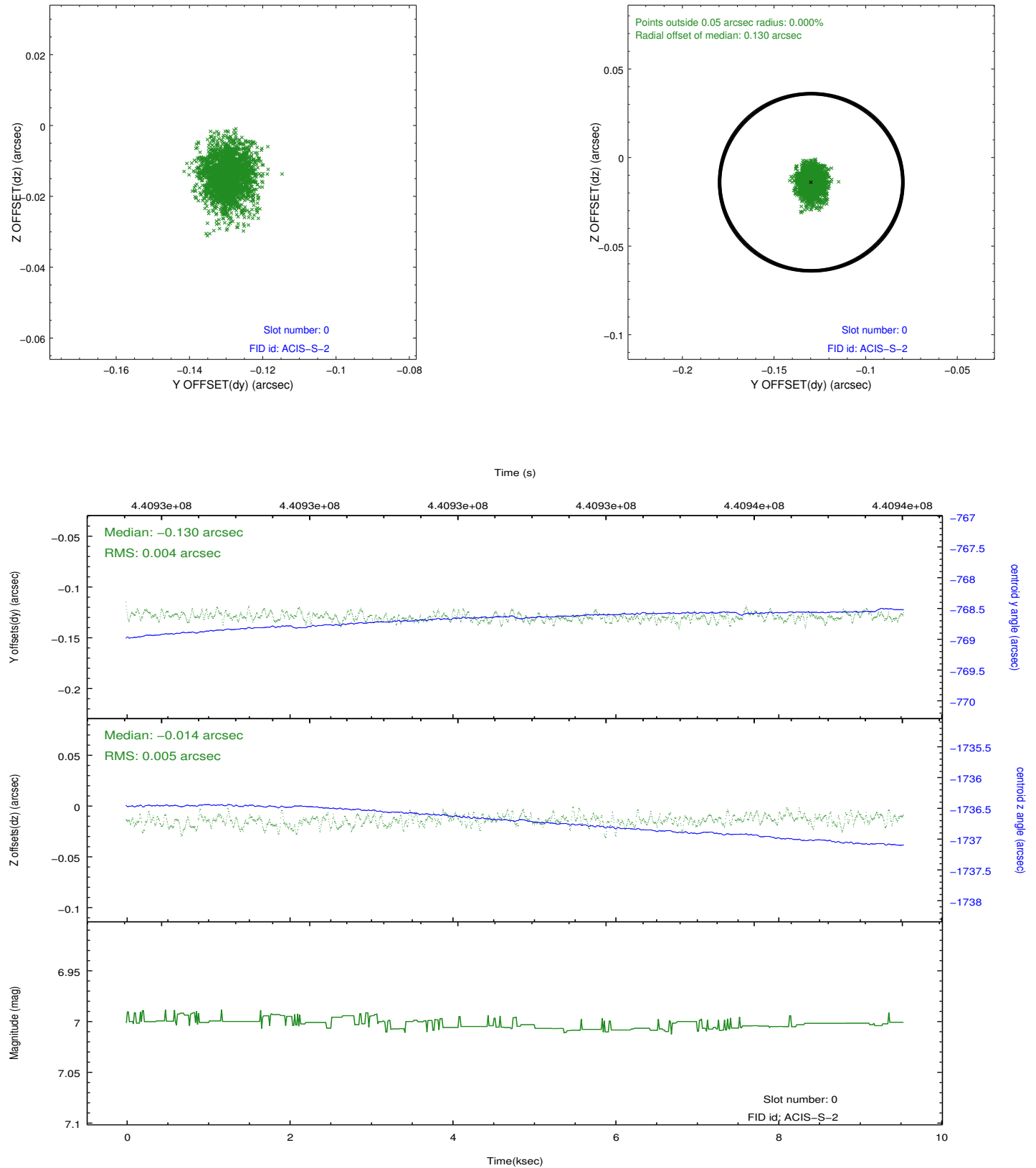


2.4.5 Slot 7

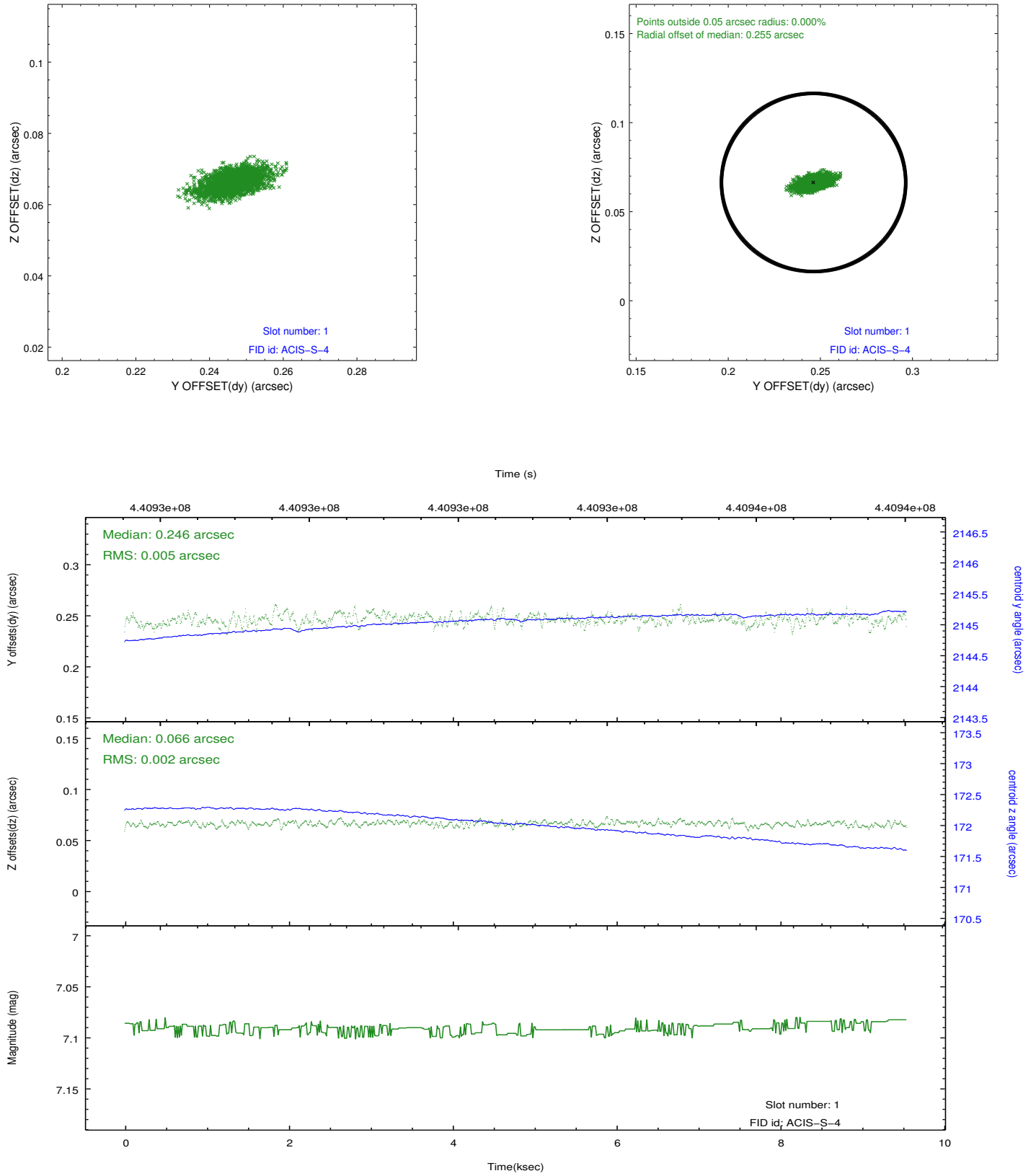


2.5 FID Slots

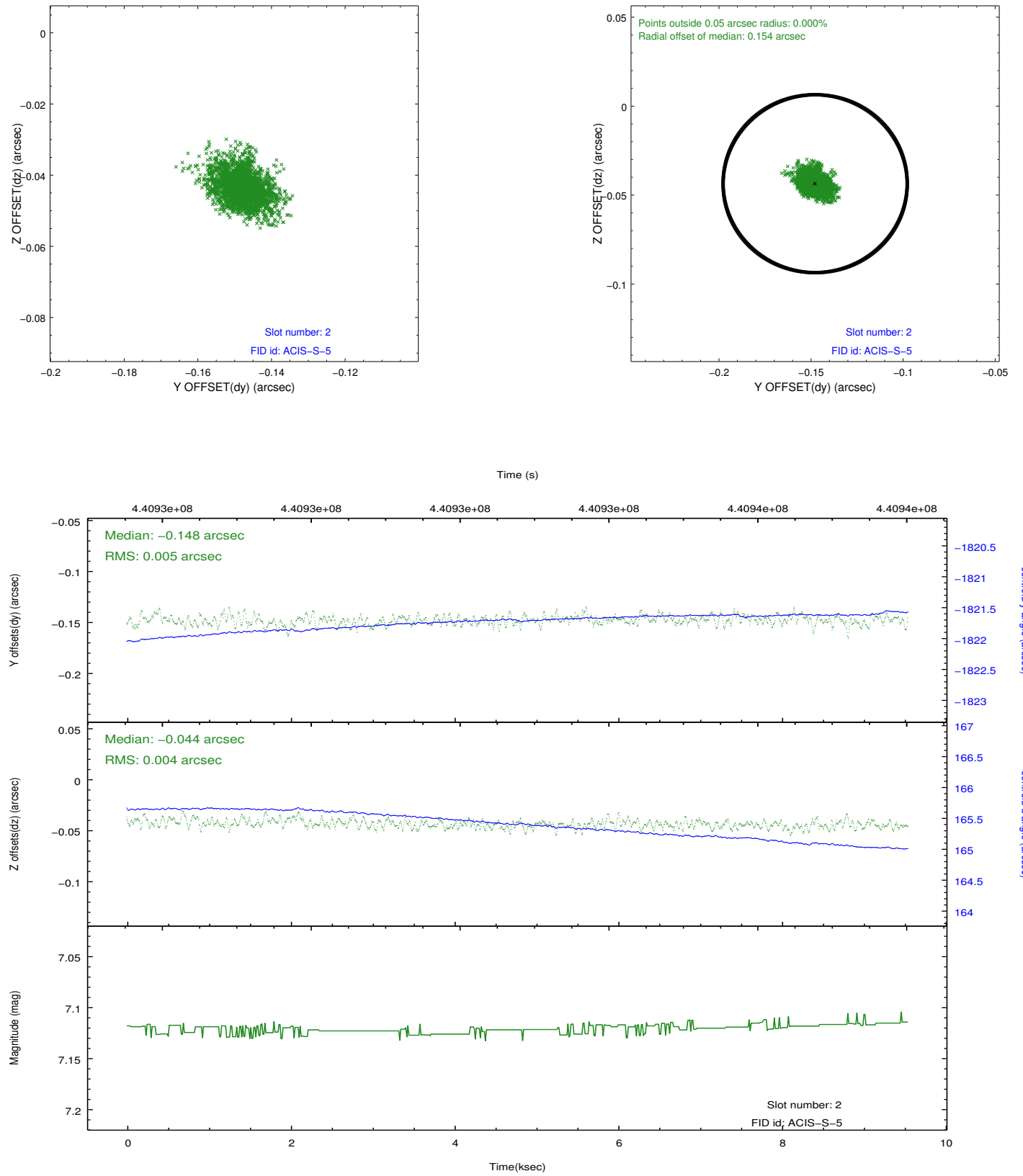
2.5.1 Slot 0



2.5.2 Slot 1



2.5.3 Slot 2



A Summary

A.1 Status

V&V Scientist	Jen Lauer
V&V Date (YYYY-MM-DD)	2012.02.29
V&V Edition	1
V&V Disposition and Status	OK
V&V Charge Time	9.3430377321839

A.2 Comments