

V&V Reference Report

L2 ASCDS Version : 8.4.3

Observation 12983 - L2 Version 1
Chandra X-Ray Center

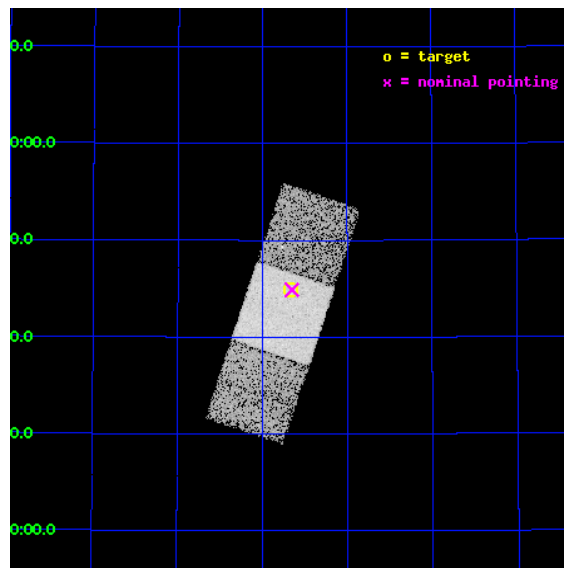
L2 Processing Date : Jan 18 2012

Contents

1	Front	2
2	OBI	3
2.1	OBI	3
2.1.1	Images	3
2.1.2	Bias	3
2.1.3	Parameters	4
2.1.4	Events	4
2.2	Compared Parameters	5
2.3	Aspect	6
2.4	Star Slots	9
2.4.1	Slot 3	9
2.4.2	Slot 4	10
2.4.3	Slot 5	11
2.4.4	Slot 6	12
2.4.5	Slot 7	13
2.5	FID Slots	14
2.5.1	Slot 0	14
2.5.2	Slot 1	15
2.5.3	Slot 2	16
A	Summary	17
A.1	Status	17
A.2	Comments	17

1 Front

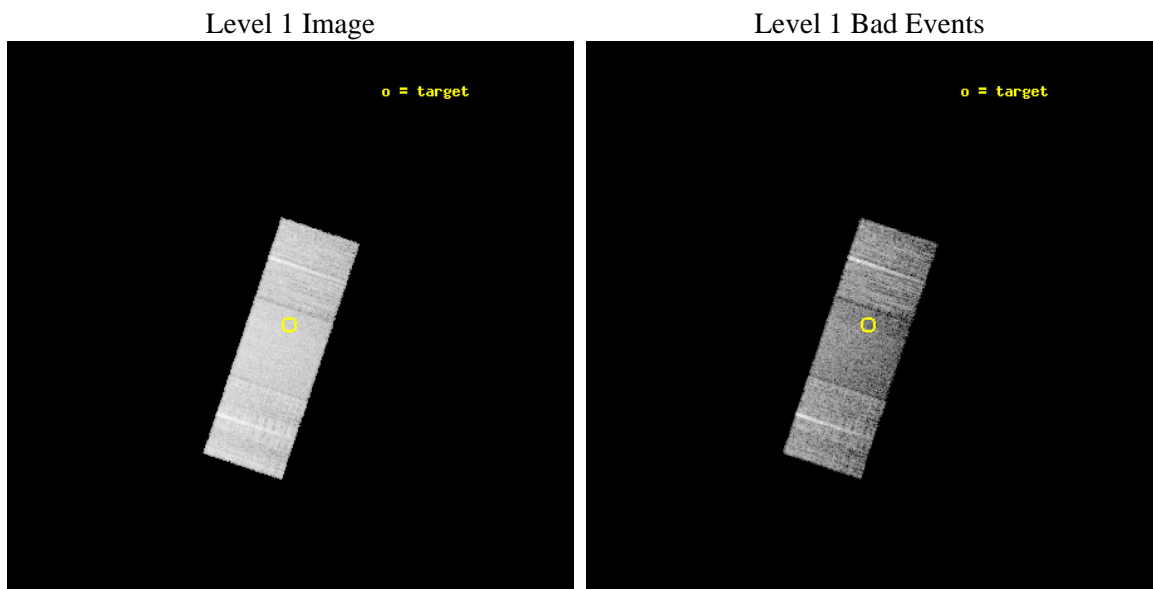
seq_num	600951	Sequence number
obs_id	12983	Observation id
title	Black-hole--galaxy co-evolution at the end of the Hubble sequence	
observer	Prof. Smita Mathur	Principal investigator
object	UGC 6446	Source name
dtcycle	0	
cycle	P	events from which exps? Prim/Second/Both
ra_targ	171.668333	Observer's specified target RA [deg]
dec_targ	53.7475	Observer's specified target Dec [deg]
ra_nom	171.66336725487	Nominal RA [deg]
dec_nom	53.748237349607	Nominal Dec [deg]
roll_nom	108.51458819263	Nominal Roll [deg]
revision	1	Processing version of data
ontime	10061.304174721	Sum of GTIs [s]
livetime	9929.8458286541	Livetime [s]
ontime6	10061.263134718	Sum of GTIs [s]
ontime7	10061.304174721	Sum of GTIs [s]
ontime8	10061.222094715	Sum of GTIs [s]
l2events	50321	Number of level 2 events



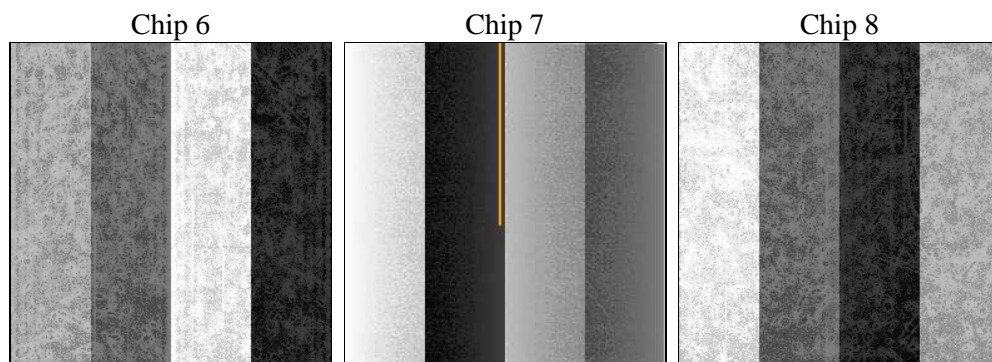
2 OBI

2.1 OBI

2.1.1 Images



2.1.2 Bias



2.1.3 Parameters

obi_num	0	Obi number	sched_exp_time	10000.308000	[s] Scheduled observation exposure time
ascdsver	8.4.3	Processing system revision	ontime	10061.304174721	Sum of GTIs [s]
caldsver	4.4.7	 	ontime6	10061.263134718	Sum of GTIs [s]
date	2012-01-18T08:40:32	Date and time of file creation	ontime7	10061.304174721	Sum of GTIs [s]
revision	1	Processing version of data	ontime8	10061.222094715	Sum of GTIs [s]
			l1events	234399	Number of level 1 events

2.1.4 Events

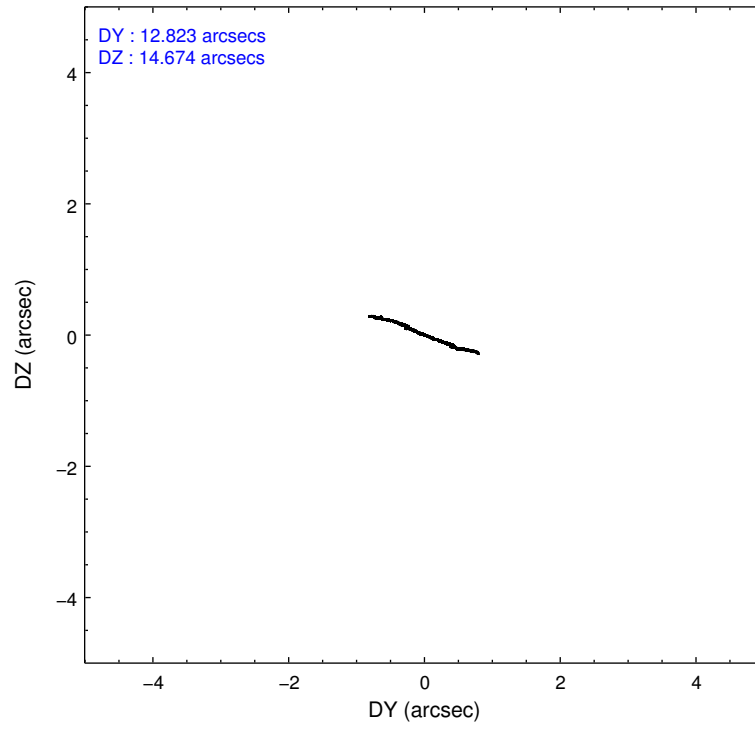
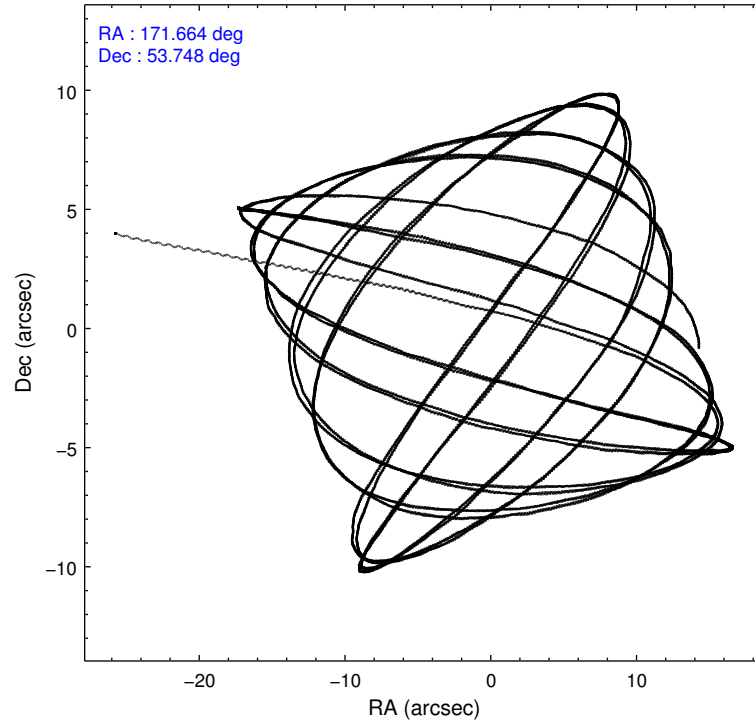
	ccd 6	ccd 7	ccd 8
level 1 events	66497	81031	86871
rejected events	58839	44490	63949
rejected %	88%	54%	73%

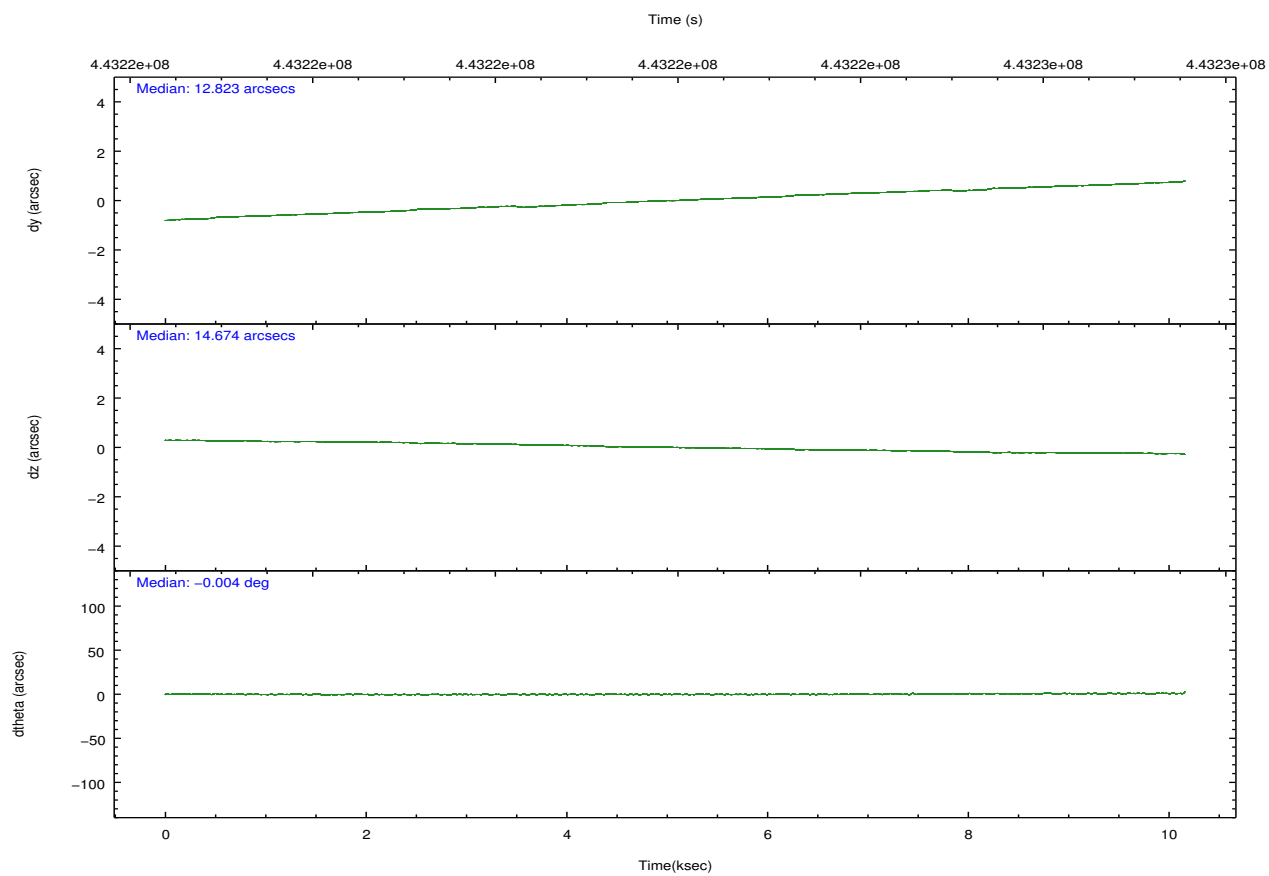
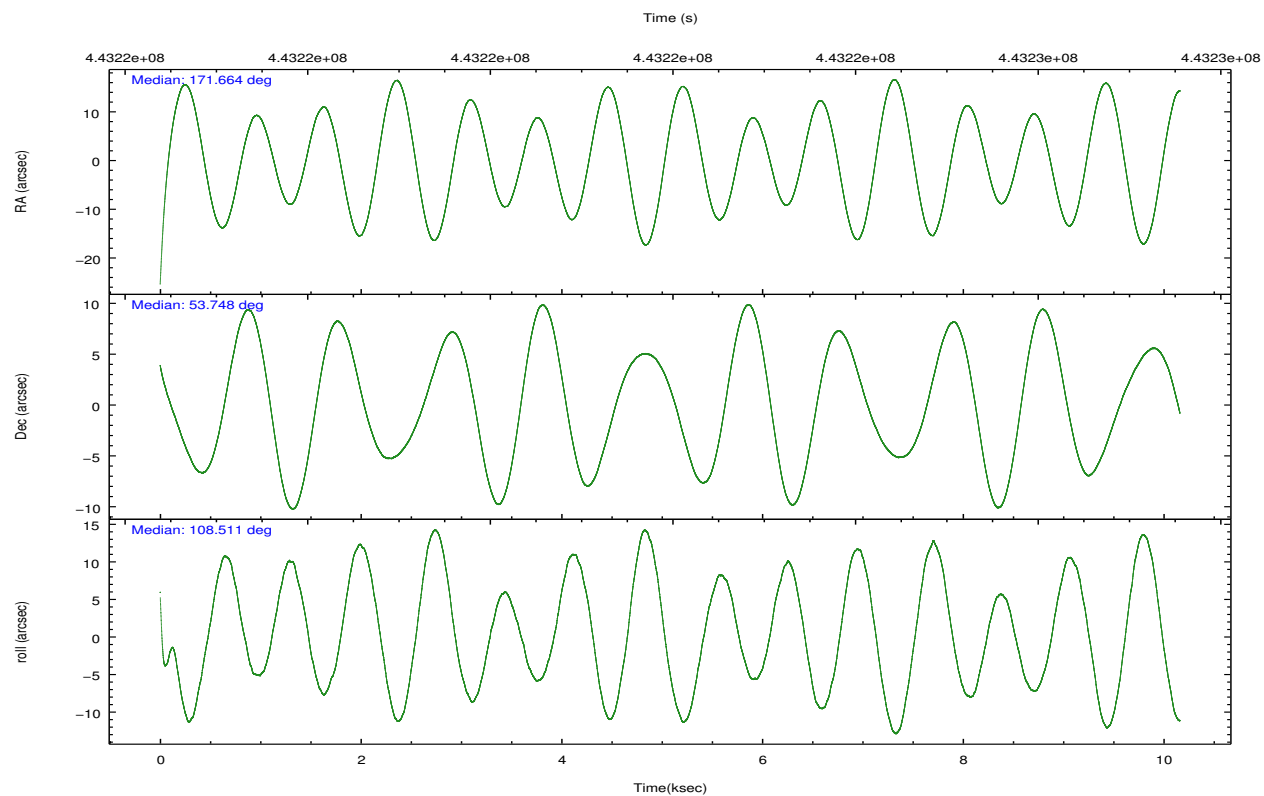
	ccd 6	ccd 7	ccd 8
grade 0 events	2657	3286	7016
	3%	4%	8%
grade 1 events	41	90	77
	0%	0%	0%
grade 2 events	1827	7472	5185
	2%	9%	5%
grade 3 events	747	3344	2503
	1%	4%	2%
grade 4 events	762	3125	2395
	1%	3%	2%
grade 5 events	3070	8463	4427
	4%	10%	5%
grade 6 events	1675	19335	5835
	2%	23%	6%
grade 7 events	55718	35916	59433
	83%	44%	68%

2.2 Compared Parameters

Parameter	Planned	Actual	Parameter	Planned	Actual
Instrument	ACIS	ACIS	Obspar format version number	7	7
Detector	ACIS-678	ACIS-678	Obspar file type	PREDICTED	ACTUAL
Grating	NONE	NONE	Obspar update status	NONE	UPDATED
Data mode	FAINT	FAINT	CCD I0 on	N	N
Observation mode	POINTING	POINTING	CCD I1 on	N	N
[deg] Pointing RA	171.698401	171.6633672548695	CCD I2 on	N	N
[deg] Pointing Dec	53.730386	53.74823734960679	CCD I3 on	N	N
[deg] Pointing Roll	108.329731	108.5145881926337	CCD S0 on	N	N
[mm] SIM focus pos	-0.684267	-0.6828225247311905	CCD S1 on	N	N
[mm] SIM defocus	0	0.001444936568705701	CCD S2 on	O1	Y
[mm] SIM translation stage pos	-190.132523	-190.1400660498719	CCD S3 on	Y	Y
[mm] SIM translation stage offset	0	0.00754346686406393	CCD S4 on	O2	Y
[s] Observation start time (MET)	443217054.184000	443216166.06013	CCD S5 on	N	N
Observation start date	2012-01-17T19:49:48	2012-01-17T19:36:06	Number of optional ACIS chips dropped	0	0
[s] Observation end time (MET)	443227054.184000	443227279.62321	On-chip summing requested	N	N
Observation end date	2012-01-17T22:36:28	2012-01-17T22:41:19	Subarray requested	NONE	NONE
Read mode	TIMED	TIMED	Alternating exposures requested	N	N
			[s] Primary exposure time	0.000000	3.1

2.3 Aspect



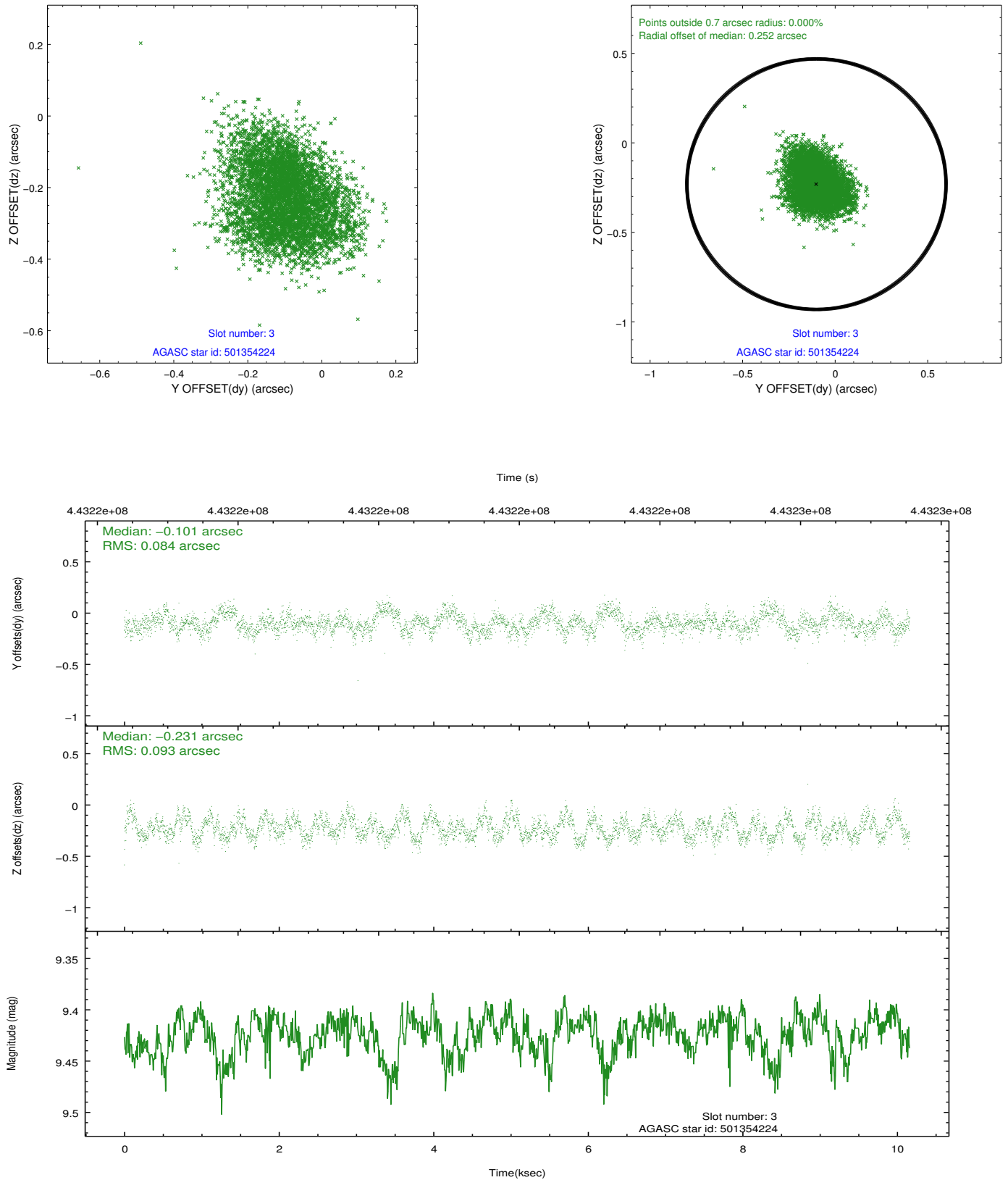


Slot Statistics

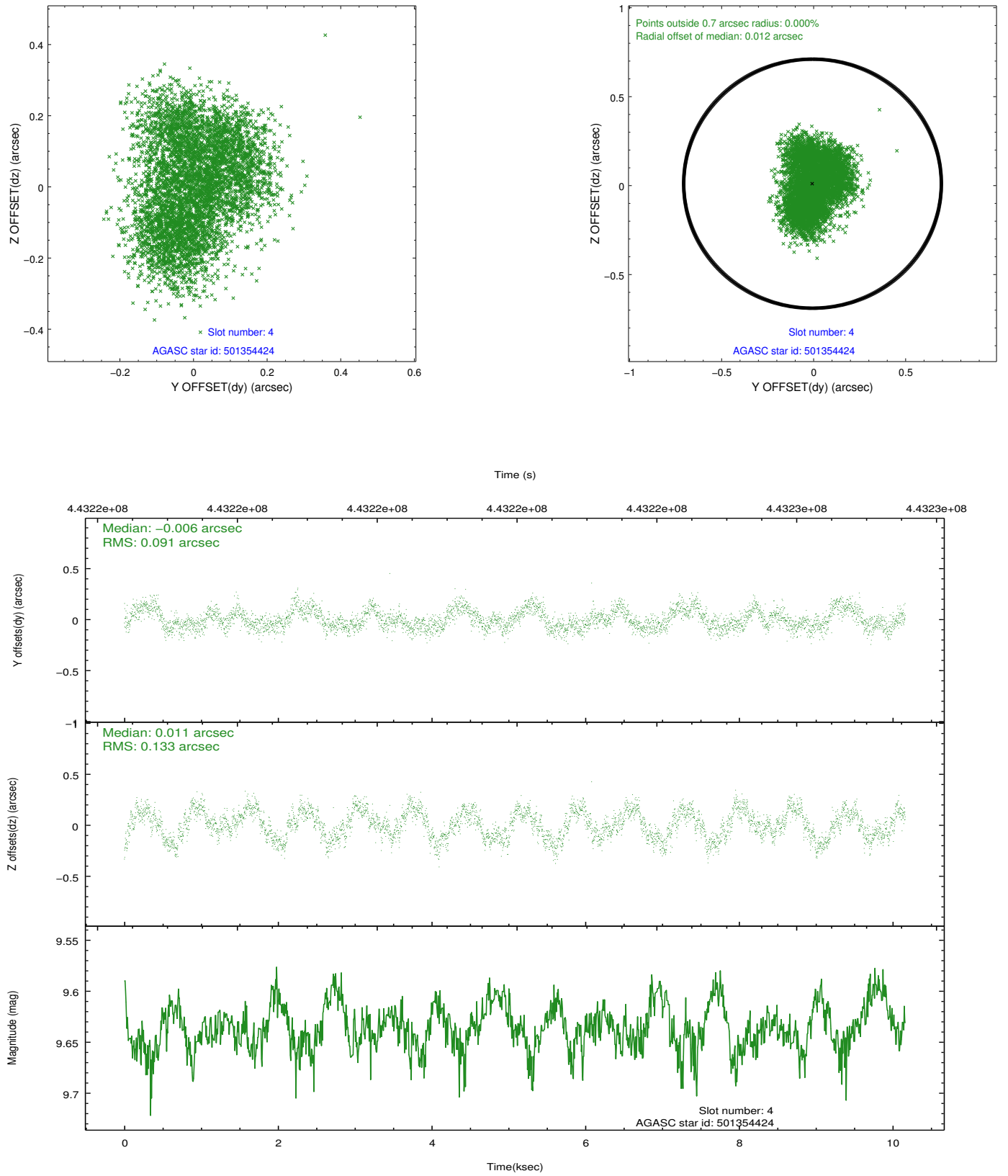
slot	status	id	mag	n_pts	med_dy	med_dz	dr1	dr2	ra	dec	mean_y	mean_z
0	FID	ACIS-S-2	6.90	2479	-0.052	-0.018	0.010	0.019	0.000000	0.000000	-765.77	-1736.08
1	FID	ACIS-S-4	6.99	2479	0.192	0.030	0.014	0.032	0.000000	0.000000	2147.50	171.93
2	FID	ACIS-S-5	7.02	2479	-0.172	-0.003	0.013	0.022	0.000000	0.000000	-1818.08	166.14
3	GUIDE	501354224	9.42	4956	-0.101	-0.231	0.135	0.210	171.155385	53.967939	1177.65	822.21
4	GUIDE	501354424	9.64	4952	-0.006	0.011	0.178	0.262	171.033348	53.552572	-153.43	1550.10
5	GUIDE	501354568	9.97	4955	0.208	-0.171	0.222	0.327	171.674660	53.716103	-32.32	62.03
6	GUIDE	501357752	9.13	4956	-0.069	0.224	0.110	0.173	172.449498	54.149455	942.58	-1979.52
7	GUIDE	501358824	6.50	4956	-0.056	0.173	0.100	0.171	172.553630	54.362237	1605.72	-2421.20

2.4 Star Slots

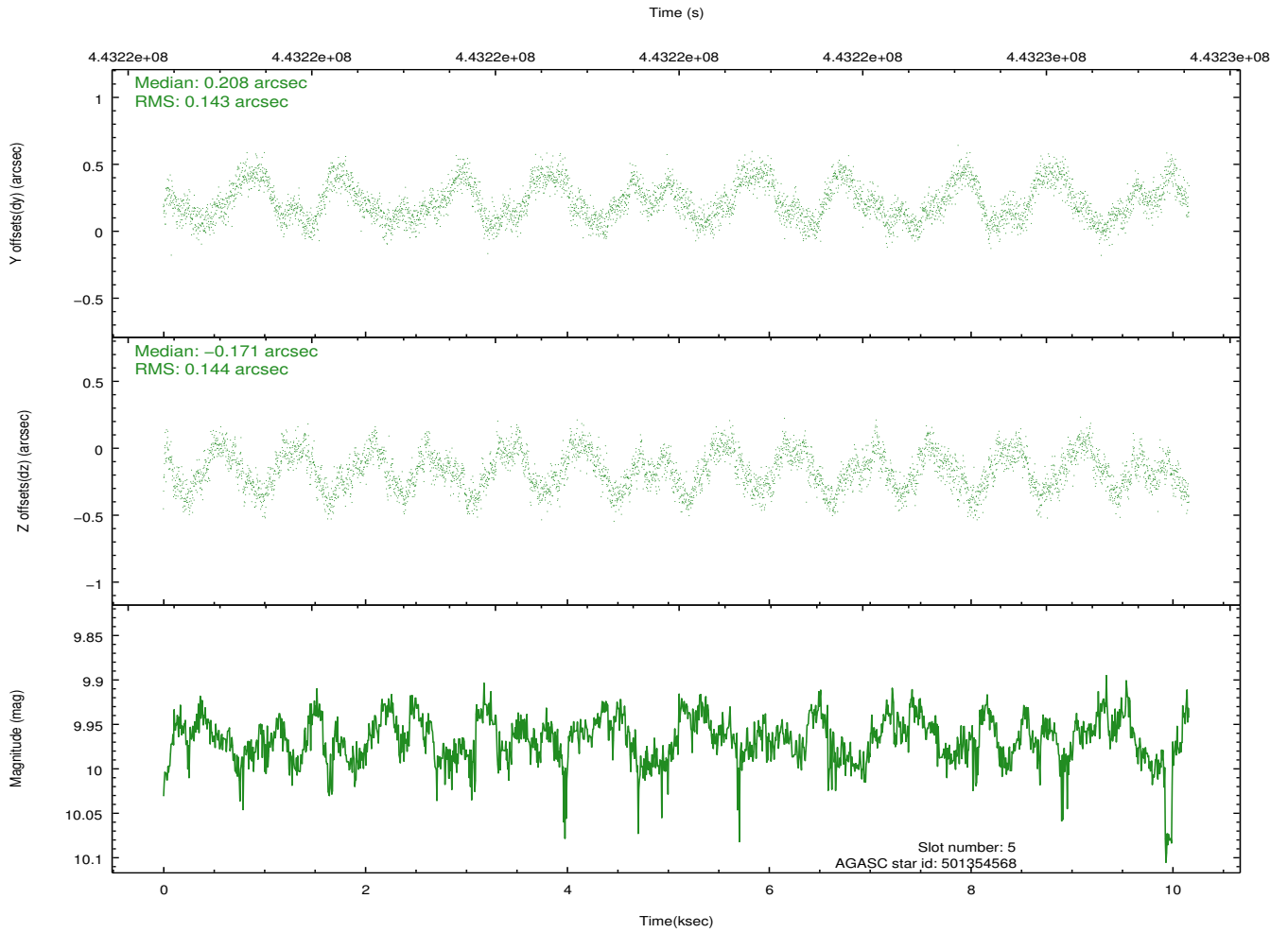
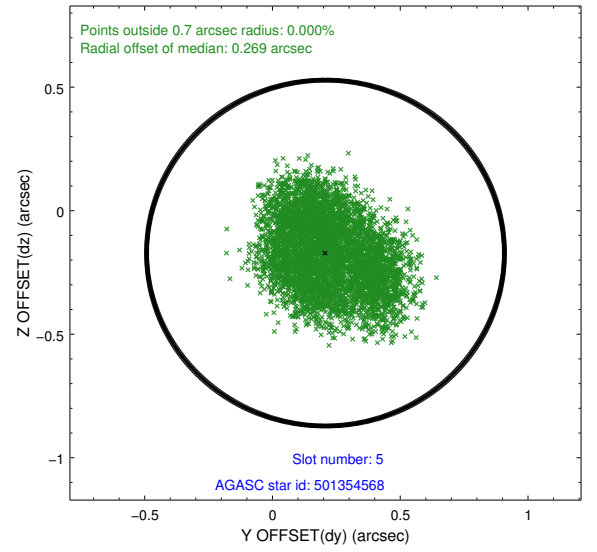
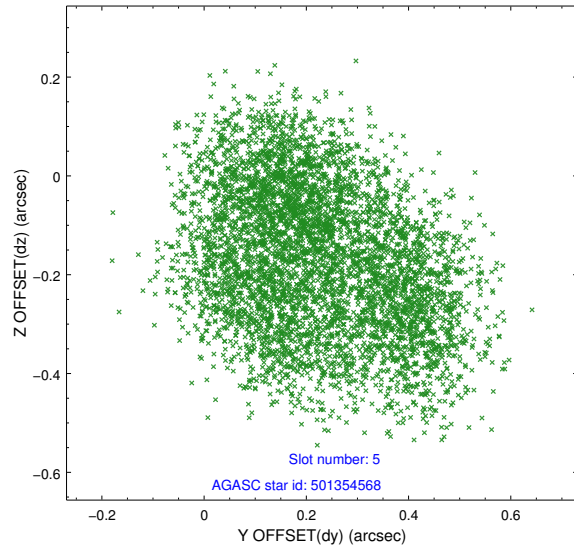
2.4.1 Slot 3



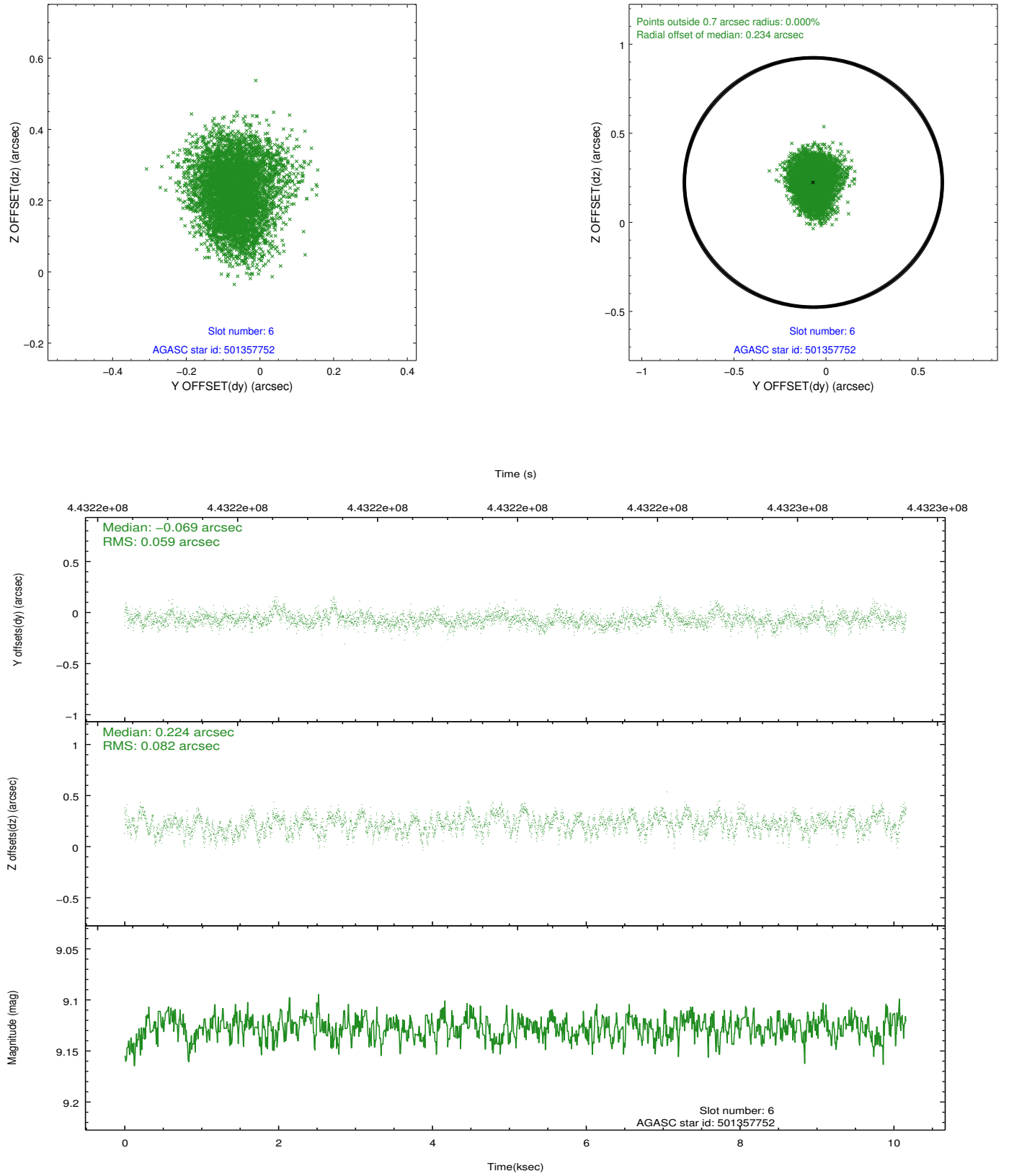
2.4.2 Slot 4



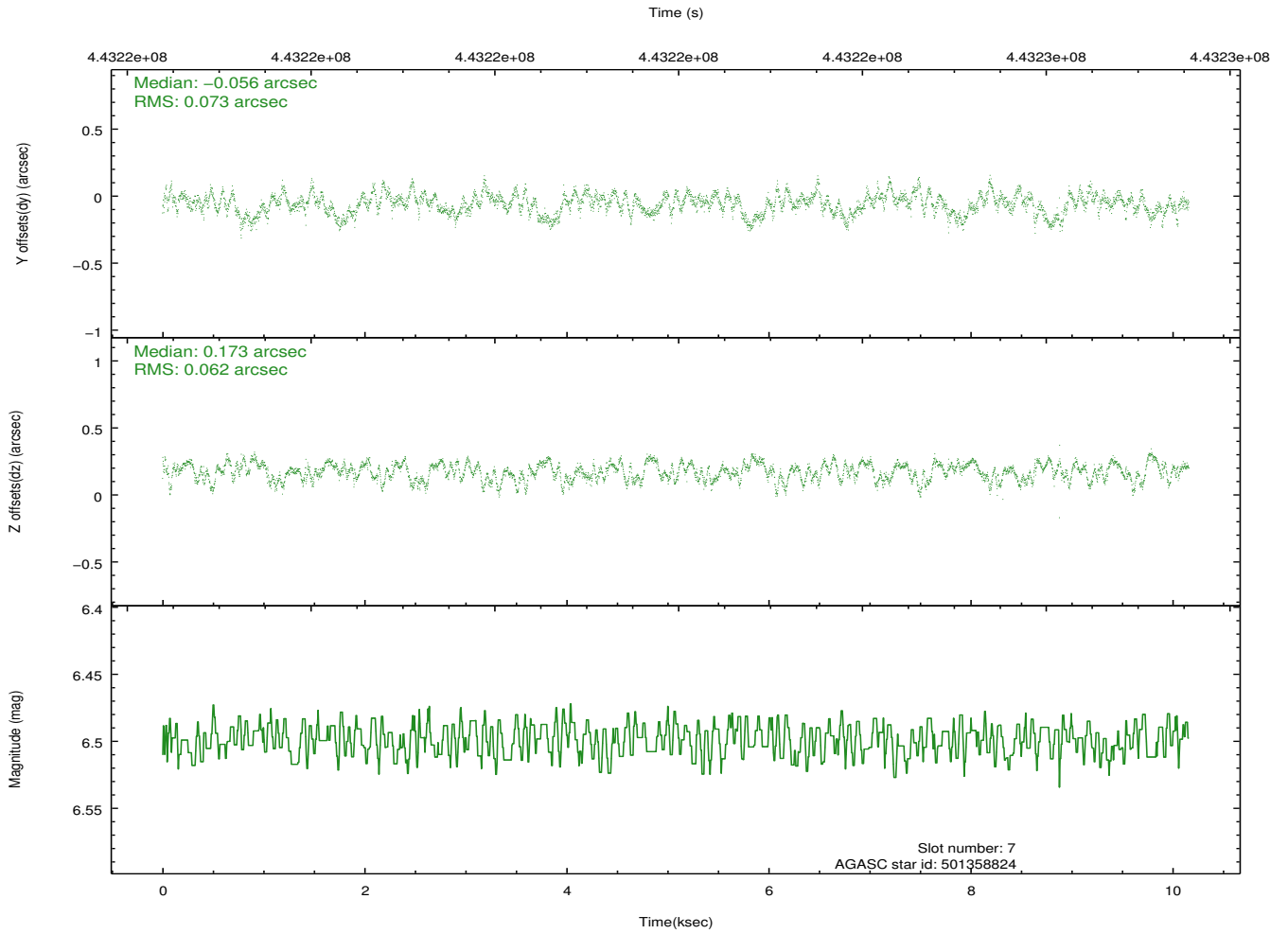
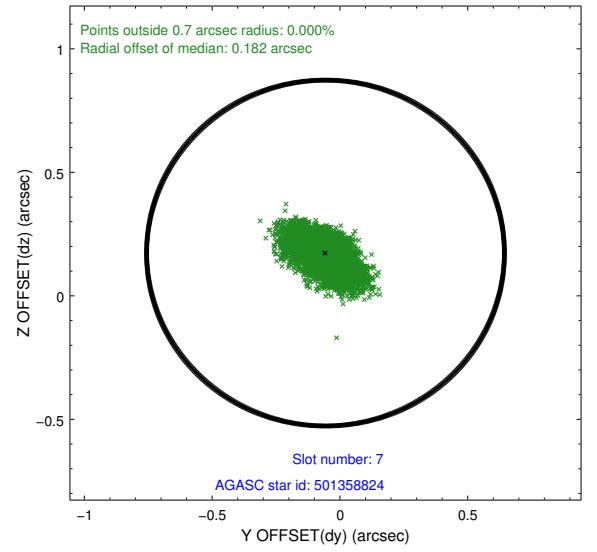
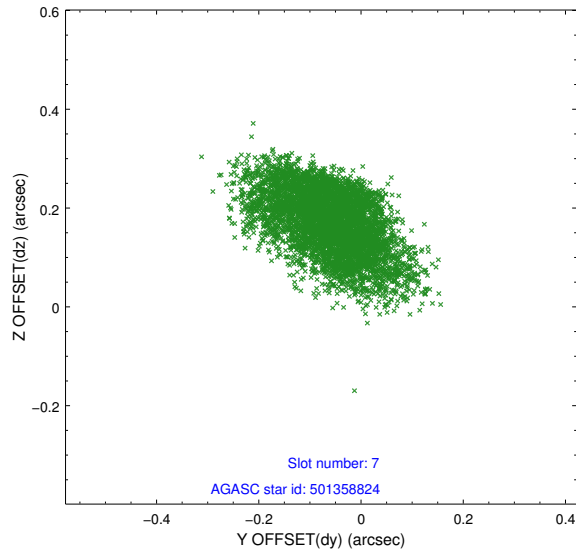
2.4.3 Slot 5



2.4.4 Slot 6

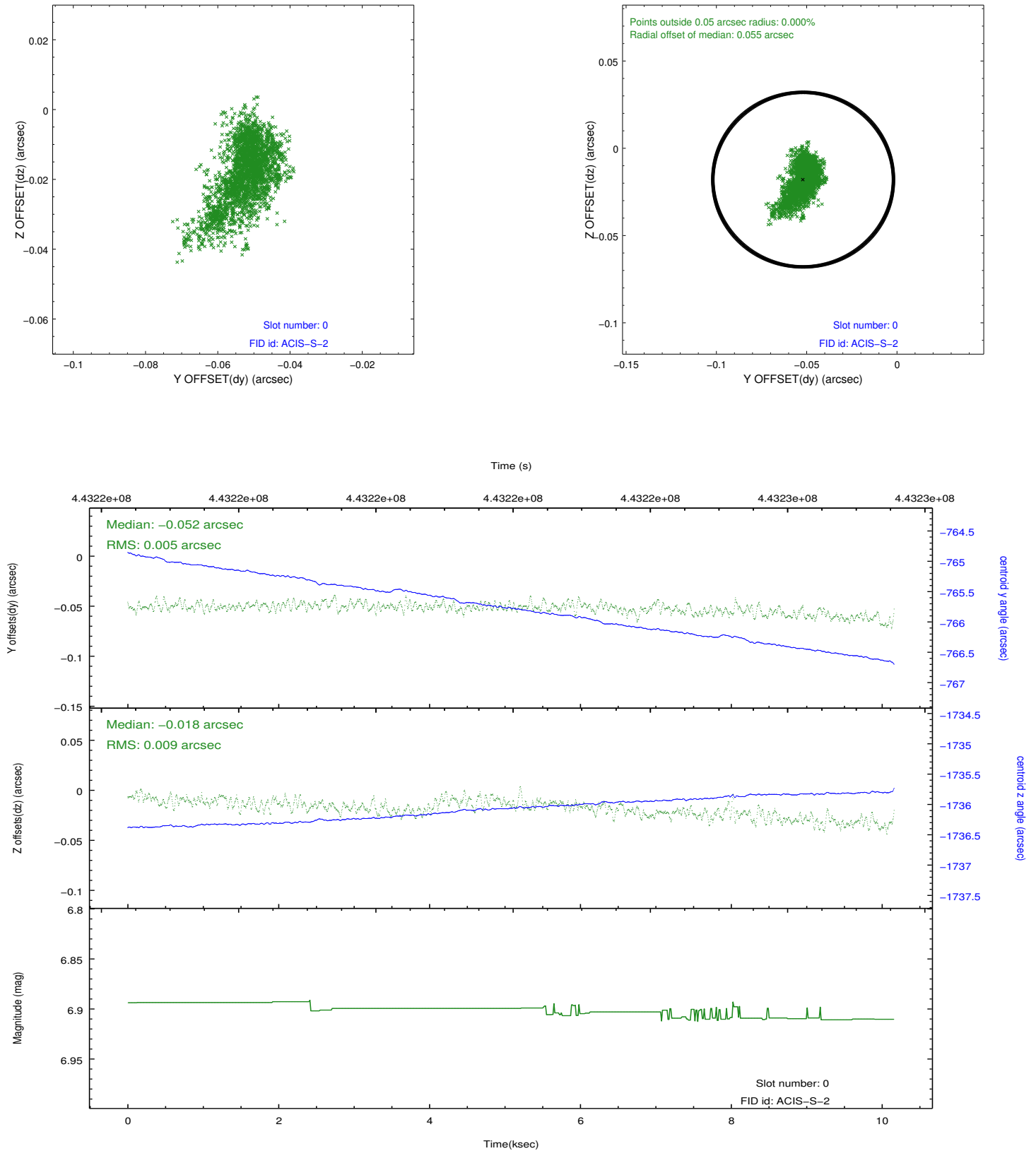


2.4.5 Slot 7

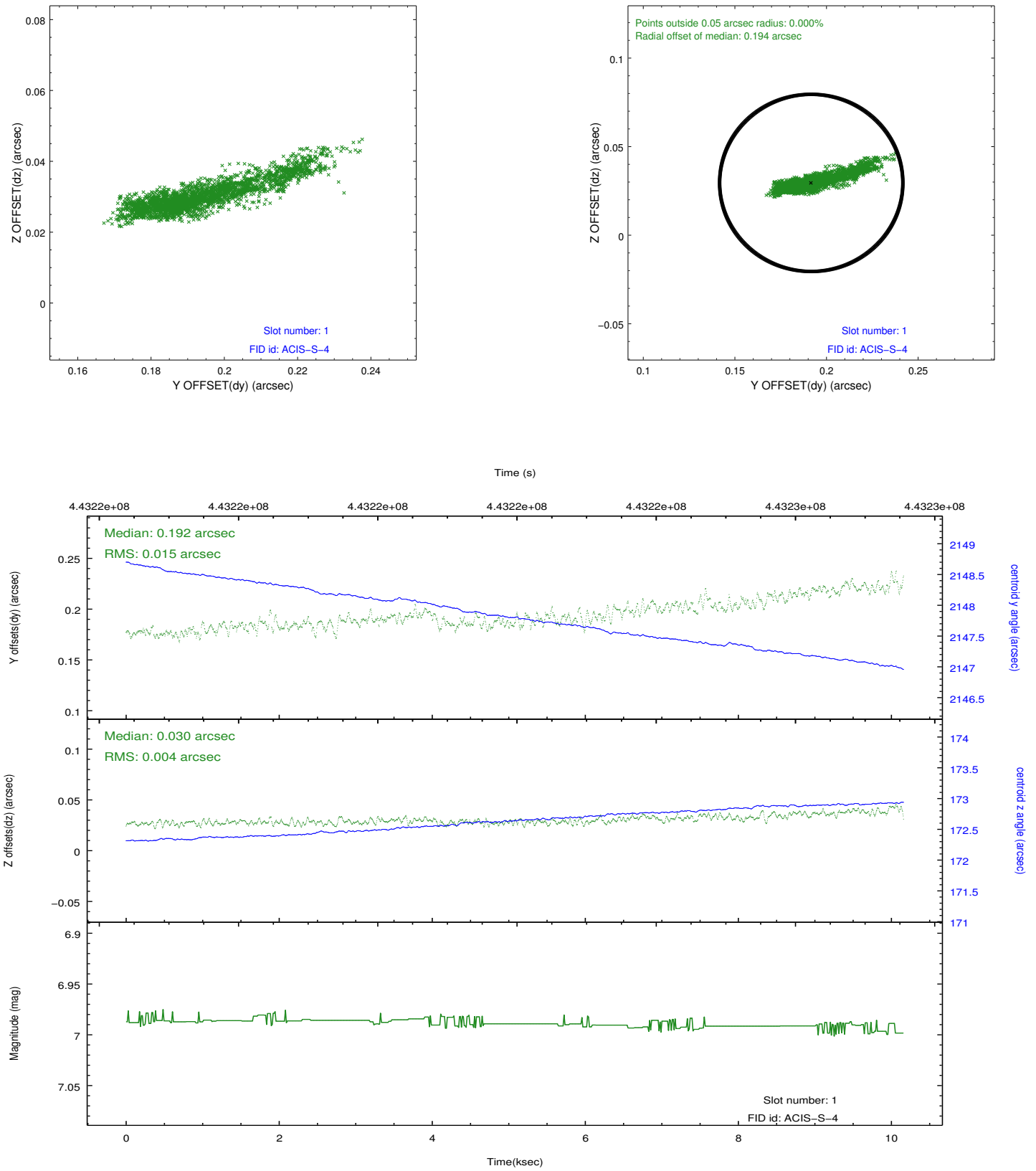


2.5 FID Slots

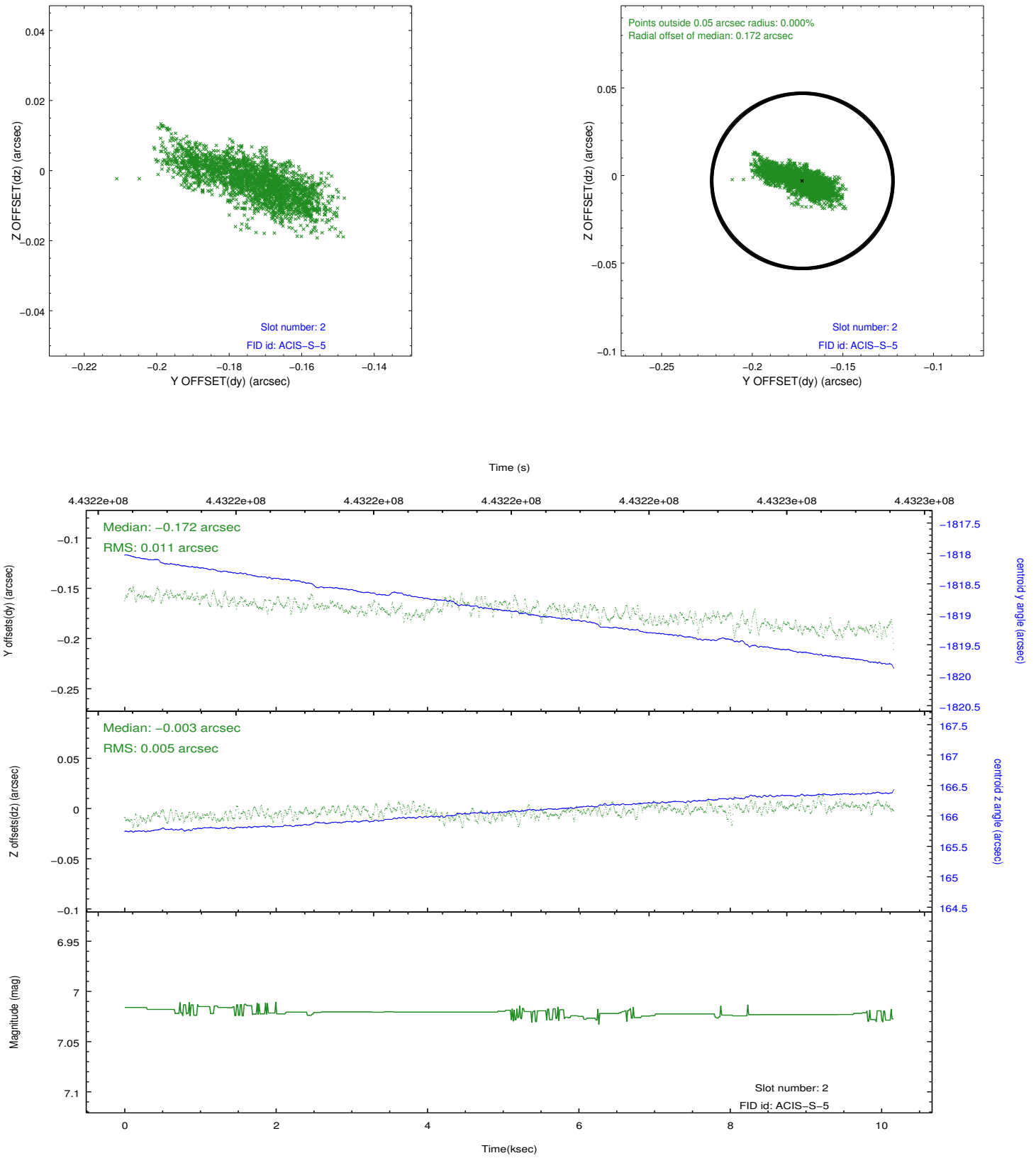
2.5.1 Slot 0



2.5.2 Slot 1



2.5.3 Slot 2



A Summary

A.1 Status

V&V Scientist	Joy Nichols
V&V Date (YYYY-MM-DD)	2012.01.18
V&V Edition	1
V&V Disposition and Status	OK
V&V Charge Time	10.061304174721

A.2 Comments