

V&V Reference Report

L2 ASCDS Version : 8.4.3

Observation 12958 - L2 Version 2
Chandra X-Ray Center

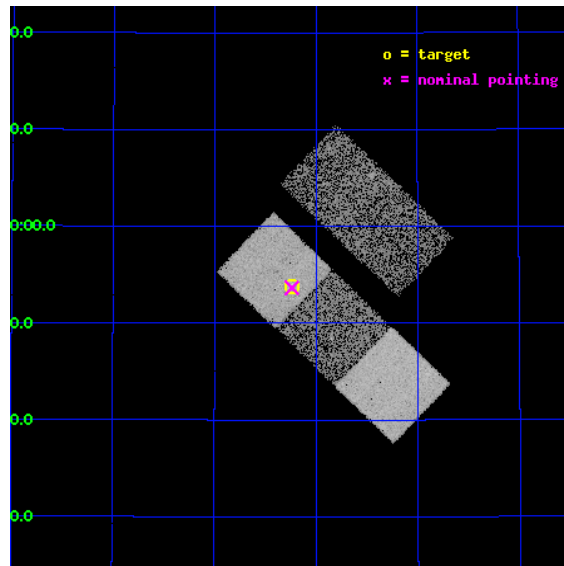
L2 Processing Date : Feb 27 2012

Contents

1	Front	2
2	OBI	3
2.1	OBI	3
2.1.1	Images	3
2.1.2	Bias	3
2.1.3	Parameters	4
2.1.4	Events	4
2.2	Compared Parameters	5
2.3	Aspect	6
2.4	Star Slots	9
2.4.1	Slot 3	9
2.4.2	Slot 4	10
2.4.3	Slot 5	11
2.4.4	Slot 6	12
2.4.5	Slot 7	13
2.5	FID Slots	14
2.5.1	Slot 0	14
2.5.2	Slot 1	15
2.5.3	Slot 2	16
A	Summary	17
A.1	Status	17
A.2	Comments	17

1 Front

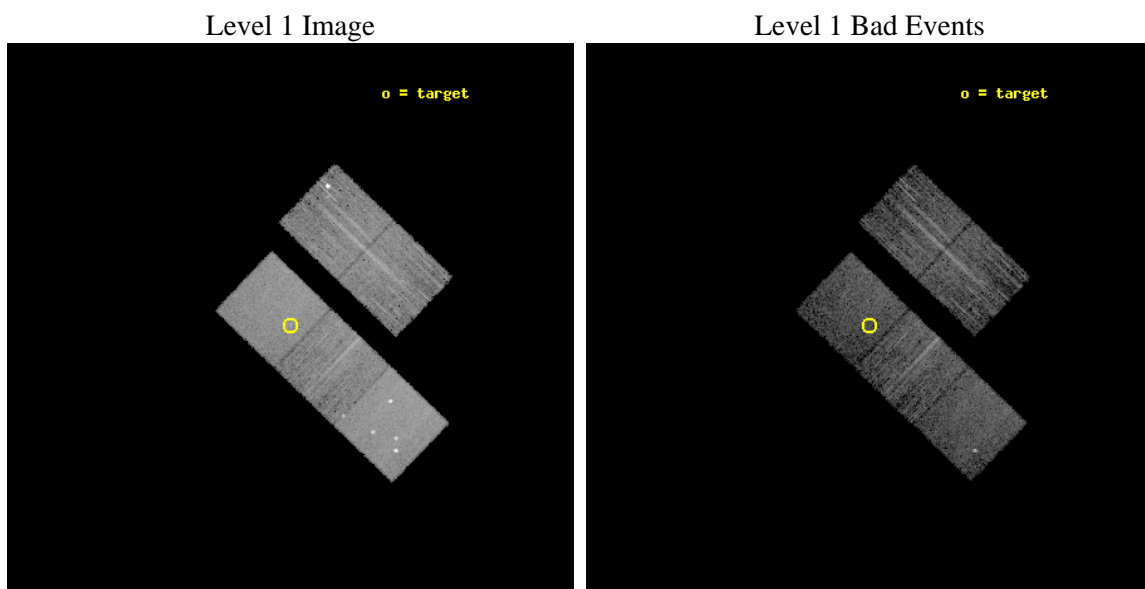
seq_num	600926	Sequence number
obs_id	12958	Observation id
title	Building a Chandra sample of Black Hole Masses	Proposal title
observer	Dr Philip Humphrey	Principal investigator
object	NGC 1161	Source name
dtcycle	0	
cycle	P	events from which exps? Prim/Second/Both
ra_targ	45.30875	Observer's specified target RA [deg]
dec_targ	44.897333	Observer's specified target Dec [deg]
ra_nom	45.309526562179	Nominal RA [deg]
dec_nom	44.894346122173	Nominal Dec [deg]
roll_nom	223.77194868787	Nominal Roll [deg]
revision	2	Processing version of data
ontime	7542.3000580072	Sum of GTIs [s]
livetime	7443.7543551889	Livetime [s]
ontime2	7542.3000580072	Sum of GTIs [s]
ontime3	7542.3000580072	Sum of GTIs [s]
ontime5	7542.3000580072	Sum of GTIs [s]
ontime6	7542.3000580072	Sum of GTIs [s]
ontime7	7542.3000580072	Sum of GTIs [s]
l2events	74747	Number of level 2 events



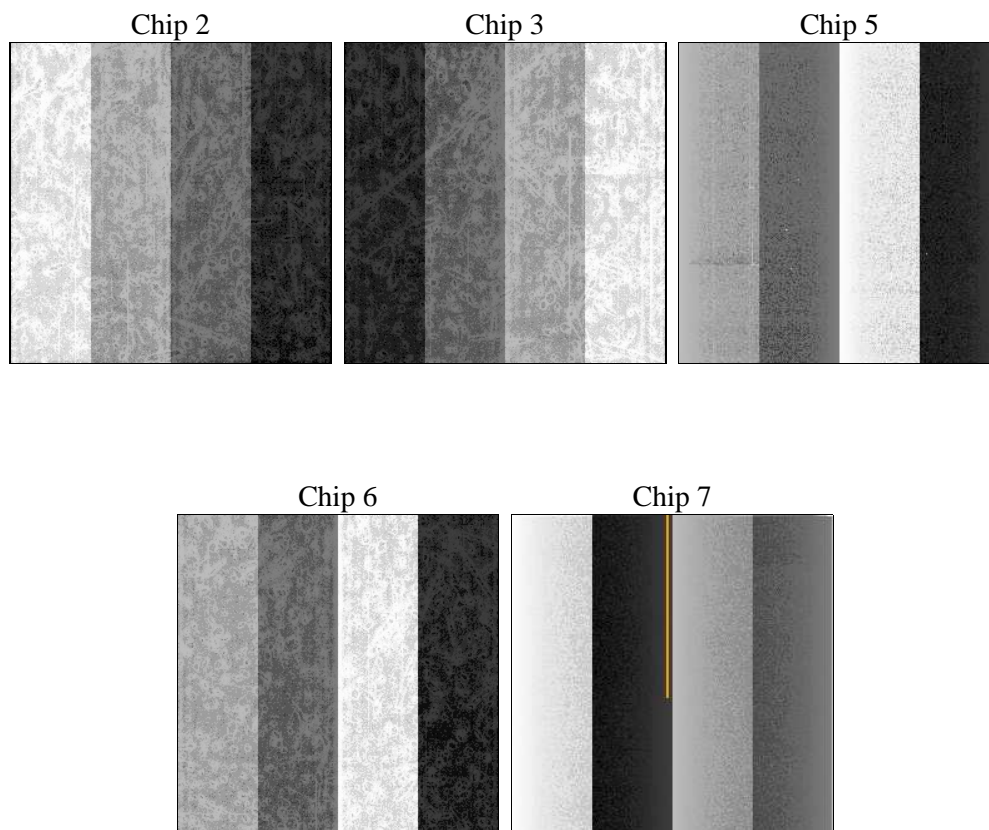
2 OBI

2.1 OBI

2.1.1 Images



2.1.2 Bias



2.1.3 Parameters

obi_num	1	Obi number	sched_exp_time	7500.000000	[s] Scheduled observation exposure time
ascdsver	8.4.3	Processing system revision	ontime	7542.3000580072	Sum of GTIs [s]
caldsver	4.4.8	 	ontime2	7542.3000580072	Sum of GTIs [s]
date	2012-02-28T00:30:08	Date and time of file creation	ontime3	7542.3000580072	Sum of GTIs [s]
revision	2	Processing version of data	ontime5	7542.3000580072	Sum of GTIs [s]
			ontime6	7542.3000580072	Sum of GTIs [s]
			ontime7	7542.3000580072	Sum of GTIs [s]
			l1events	283913	Number of level 1 events

2.1.4 Events

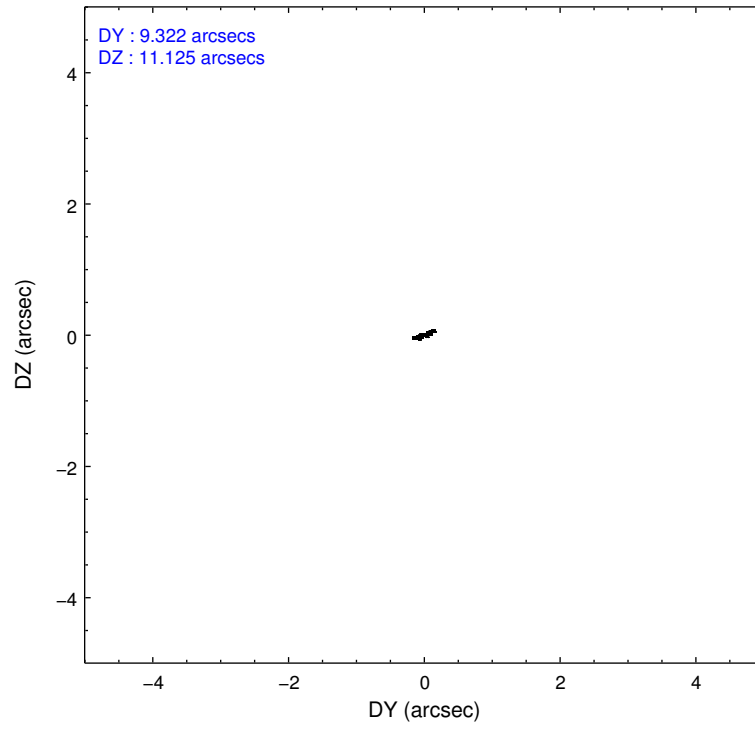
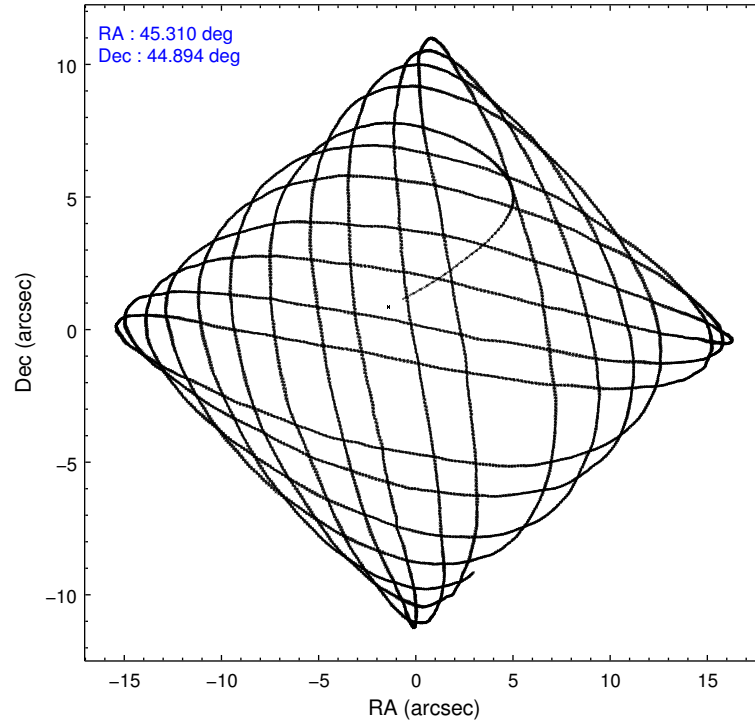
	ccd 2	ccd 3	ccd 5	ccd 6	ccd 7
level 1 events	45120	50845	79674	47445	60829
rejected events	40007	40996	38552	41521	33461
rejected %	88%	80%	48%	87%	55%

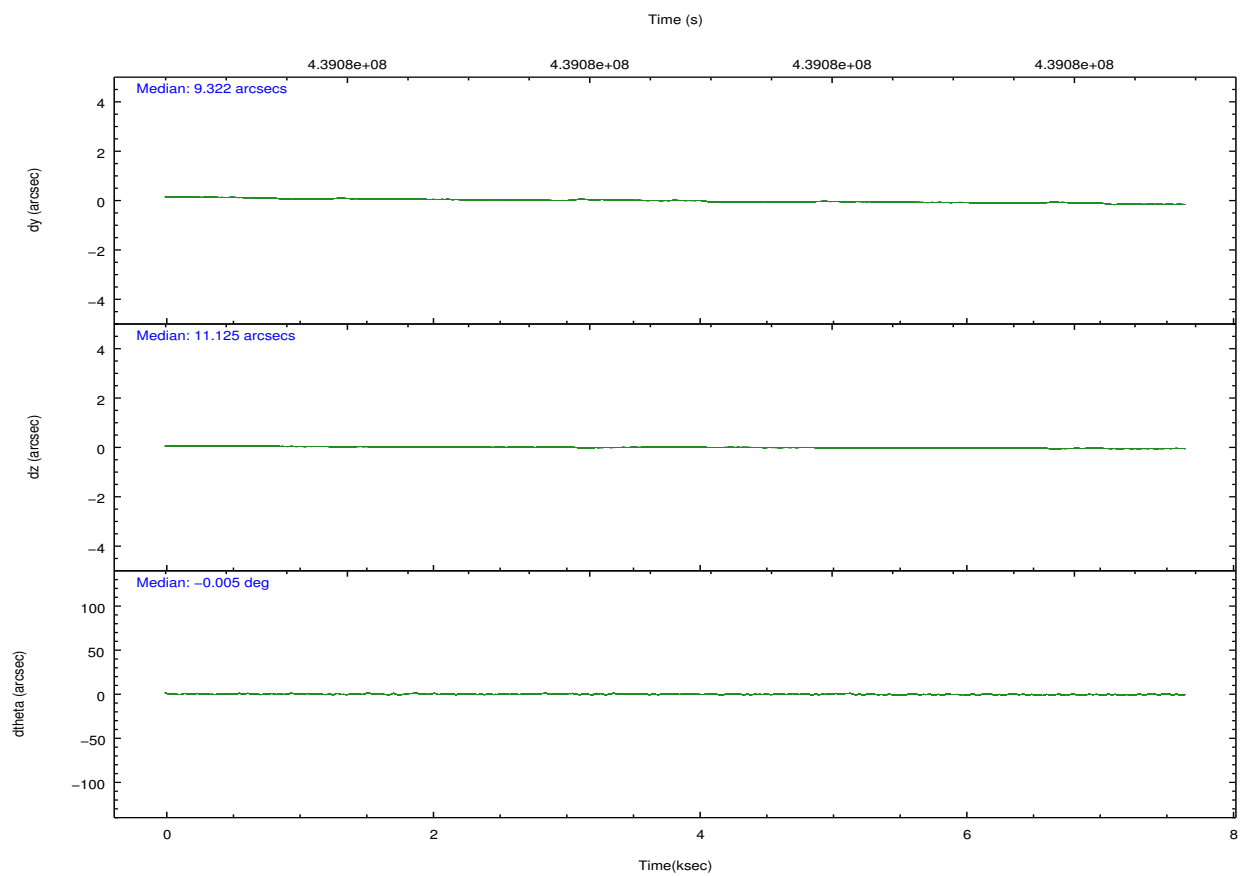
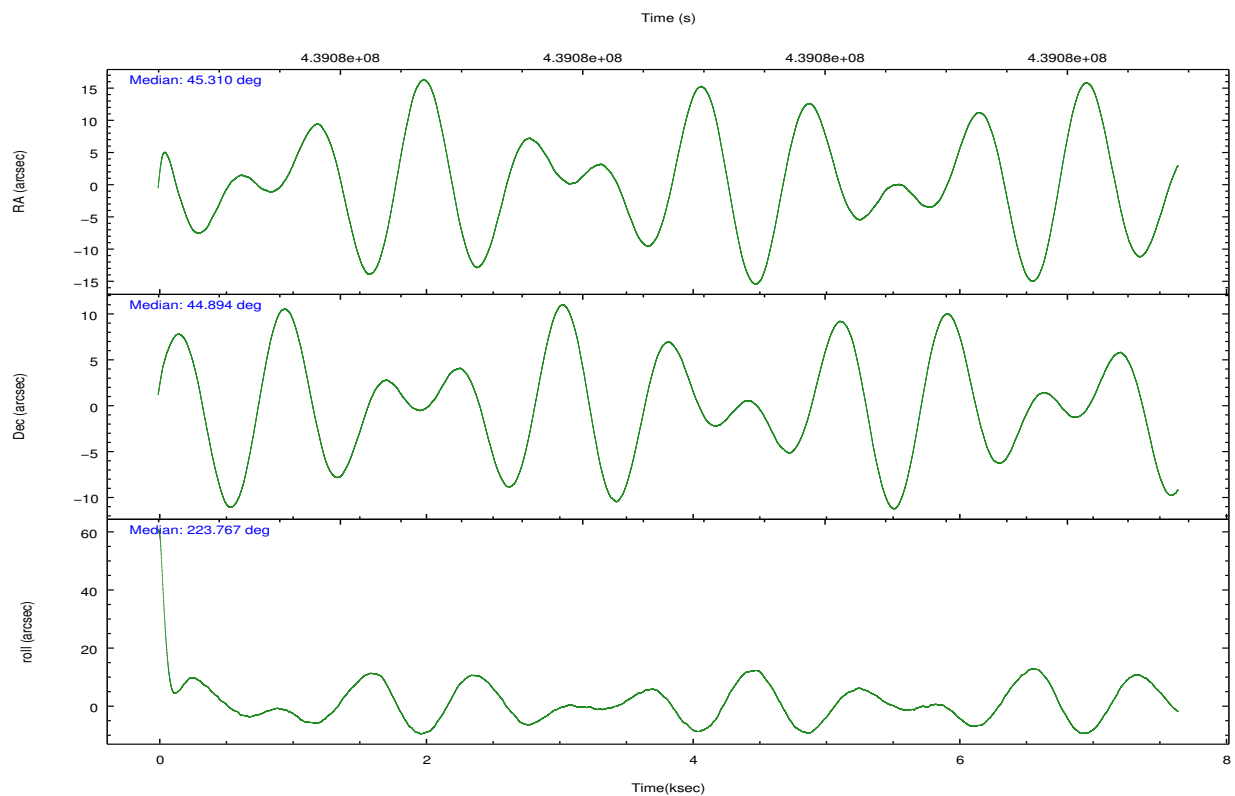
	ccd 2	ccd 3	ccd 5	ccd 6	ccd 7
grade 0 events	1859	6598	7835	2215	2538
	4%	12%	9%	4%	4%
grade 1 events	24	70	634	21	76
	0%	0%	0%	0%	0%
grade 2 events	1171	1098	11325	1249	5642
	2%	2%	14%	2%	9%
grade 3 events	562	521	1264	579	2301
	1%	1%	1%	1%	3%
grade 4 events	536	555	1166	514	2287
	1%	1%	1%	1%	3%
grade 5 events	1971	2313	5282	2234	5937
	4%	4%	6%	4%	9%
grade 6 events	986	1081	19546	1372	14609
	2%	2%	24%	2%	24%
grade 7 events	38011	38609	32622	39261	27439
	84%	75%	40%	82%	45%

2.2 Compared Parameters

Parameter	Planned	Actual	Parameter	Planned	Actual
Instrument	ACIS	ACIS	Obspar format version number	7	7
Detector	ACIS-23567	ACIS-23567	Obspar file type	PREDICTED	ACTUAL
Grating	NONE	NONE	Obspar update status	NONE	UPDATED
Data mode	VFAINT	VFAINT	CCD I0 on	N	N
Observation mode	POINTING	POINTING	CCD I1 on	N	N
[deg] Pointing RA	45.319870	45.30952656217949	CCD I2 on	O2	Y
[deg] Pointing Dec	44.920725	44.89434612217349	CCD I3 on	Y	Y
[deg] Pointing Roll	223.607908	223.7719486878696	CCD S0 on	N	N
[mm] SIM focus pos	-0.684267	-0.6828225247311905	CCD S1 on	Y	Y
[mm] SIM defocus	0	0.001444936568705701	CCD S2 on	Y	Y
[mm] SIM translation stage pos	-190.132523	-190.1400660498719	CCD S3 on	Y	Y
[mm] SIM translation stage offset	0	0.00754346686406393	CCD S4 on	O1	N
[s] Observation start time (MET)	439075015.184000	439073302.39136	CCD S5 on	N	N
Observation start date	2011-11-30T21:15:49	2011-11-30T20:48:22	Number of optional ACIS chips dropped	1	1
[s] Observation end time (MET)	439082515.184000	439083055.77938	On-chip summing requested	N	N
Observation end date	2011-11-30T23:20:49	2011-11-30T23:30:55	Subarray requested	NONE	NONE
Read mode	TIMED	TIMED	Alternating exposures requested	N	N
			[s] Primary exposure time	0.000000	3.1

2.3 Aspect



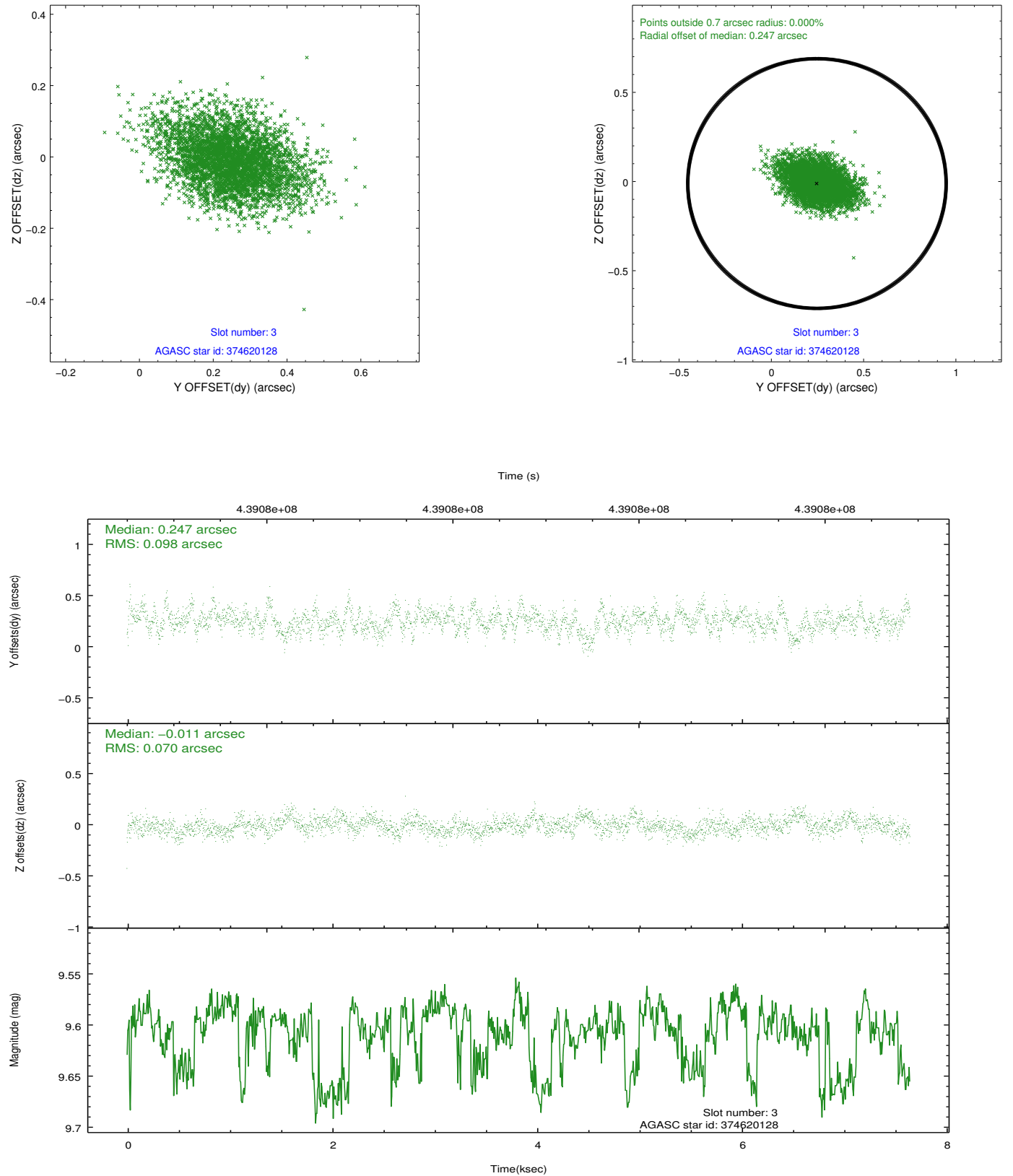


Slot Statistics

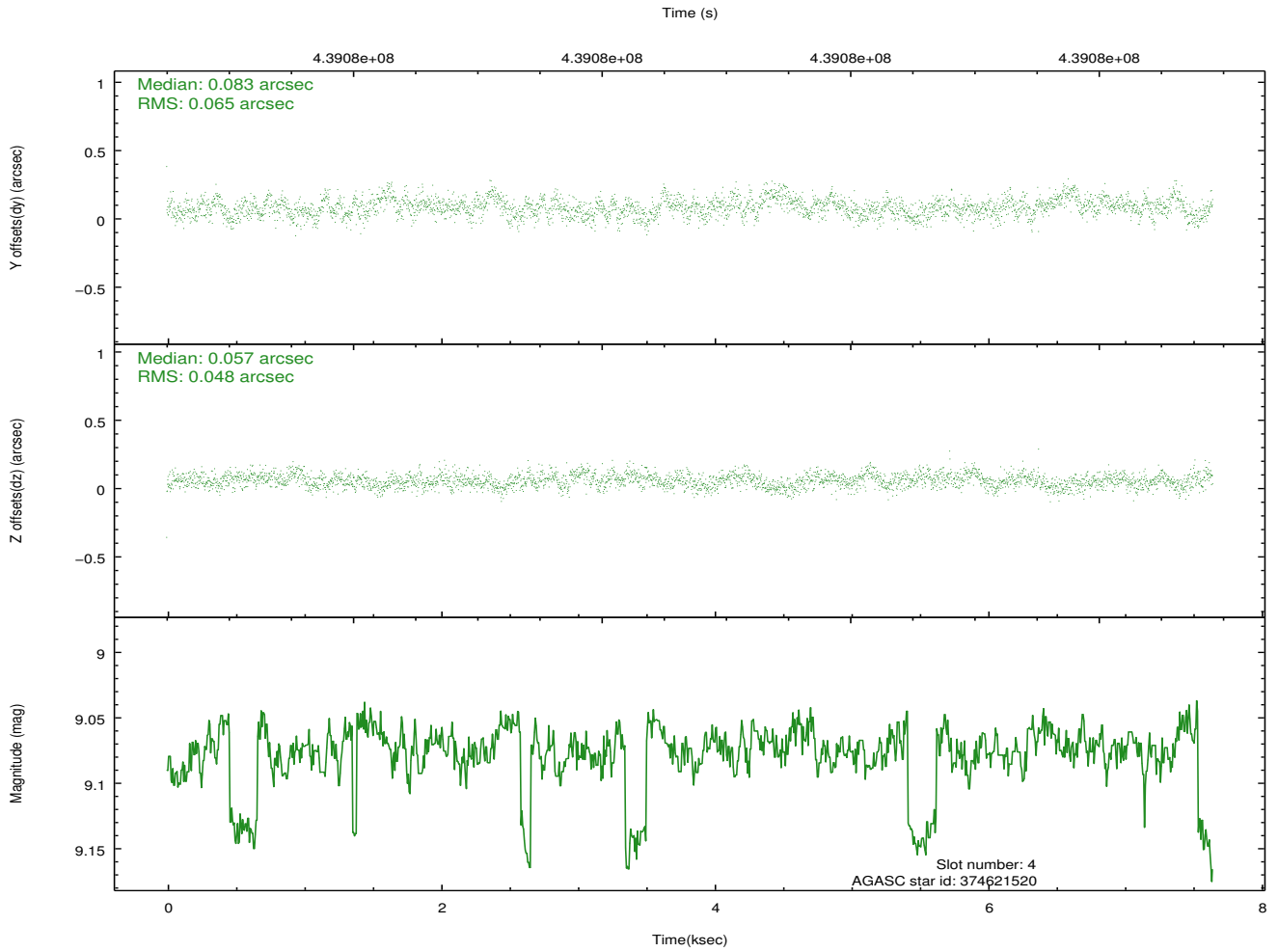
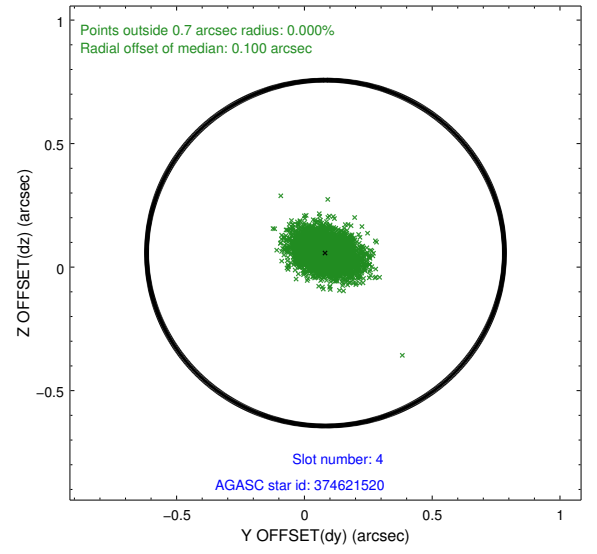
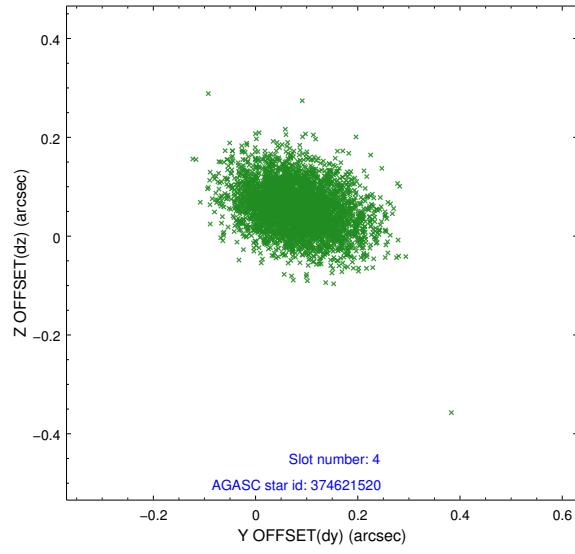
slot	status	id	mag	n_pts	med_dy	med_dz	dr1	dr2	ra	dec	mean_y	mean_z
0	FID	ACIS-S-1	7.13	1866	0.110	-0.131	0.006	0.011	0.000000	0.000000	934.00	-1728.17
1	FID	ACIS-S-5	7.17	1866	-0.208	0.047	0.006	0.010	0.000000	0.000000	-1814.88	168.83
2	FID	ACIS-S-6	7.27	1866	0.077	0.096	0.006	0.011	0.000000	0.000000	398.75	813.65
3	GUIDE	374620128	9.61	3723	0.247	-0.011	0.126	0.216	44.342865	44.781770	2143.07	-1370.30
4	GUIDE	374621520	9.07	3716	0.083	0.057	0.085	0.144	44.378351	44.704410	2272.84	-1107.81
5	GUIDE	433855096	8.54	3728	-0.184	0.034	0.083	0.132	45.318562	45.811605	-2208.84	-2324.28
6	GUIDE	433870768	9.32	3730	-0.070	0.059	0.103	0.163	45.643867	45.286436	-1503.74	-389.01
7	GUIDE	374743832	9.69	3710	-0.075	-0.139	0.132	0.206	45.694381	44.350750	714.81	2150.37

2.4 Star Slots

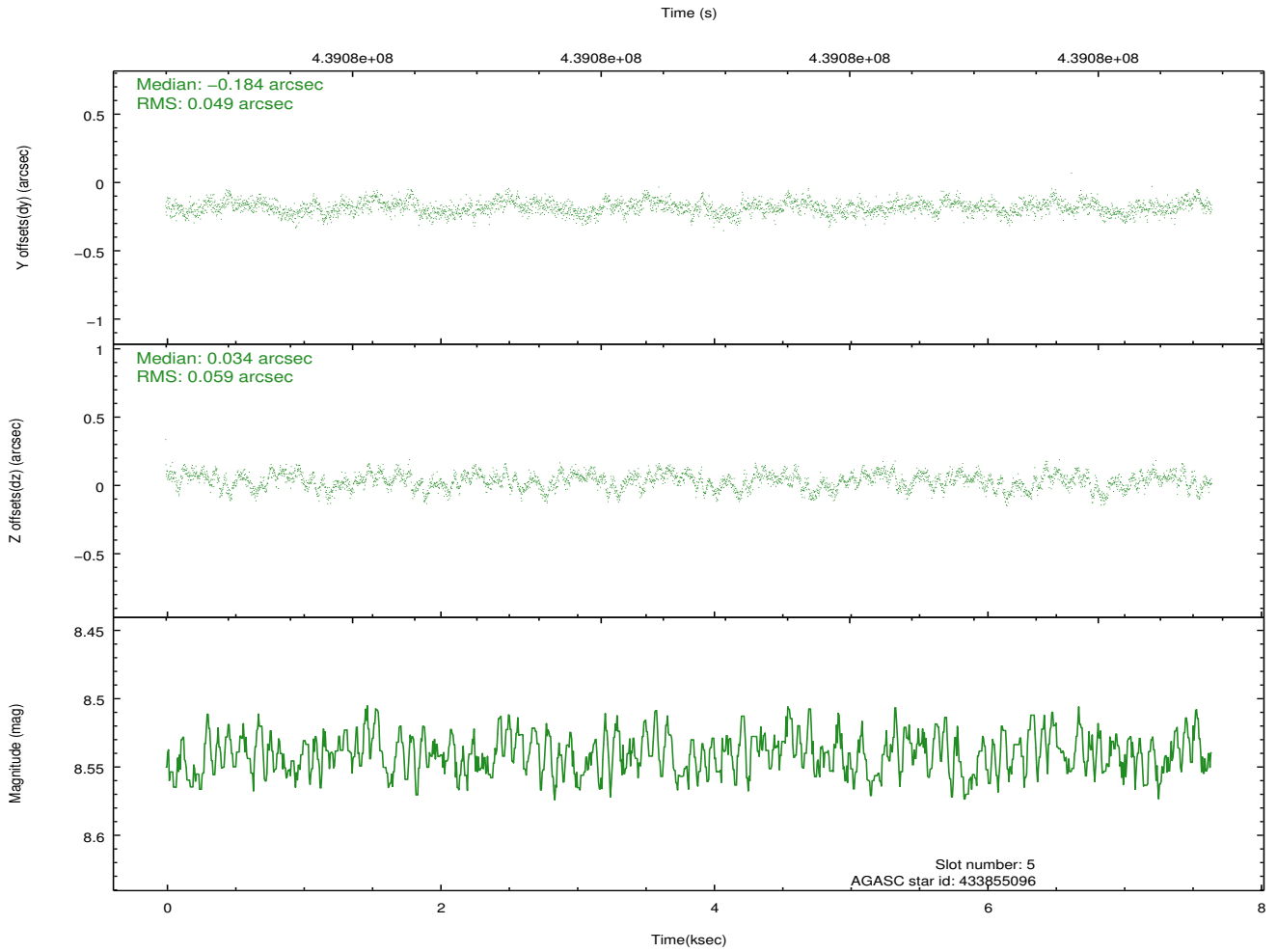
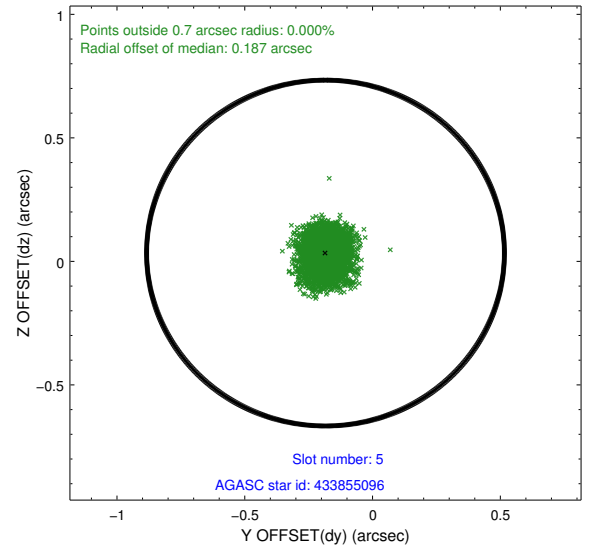
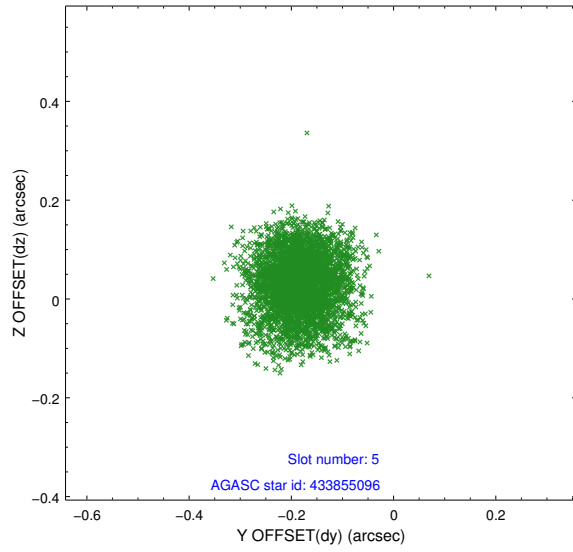
2.4.1 Slot 3



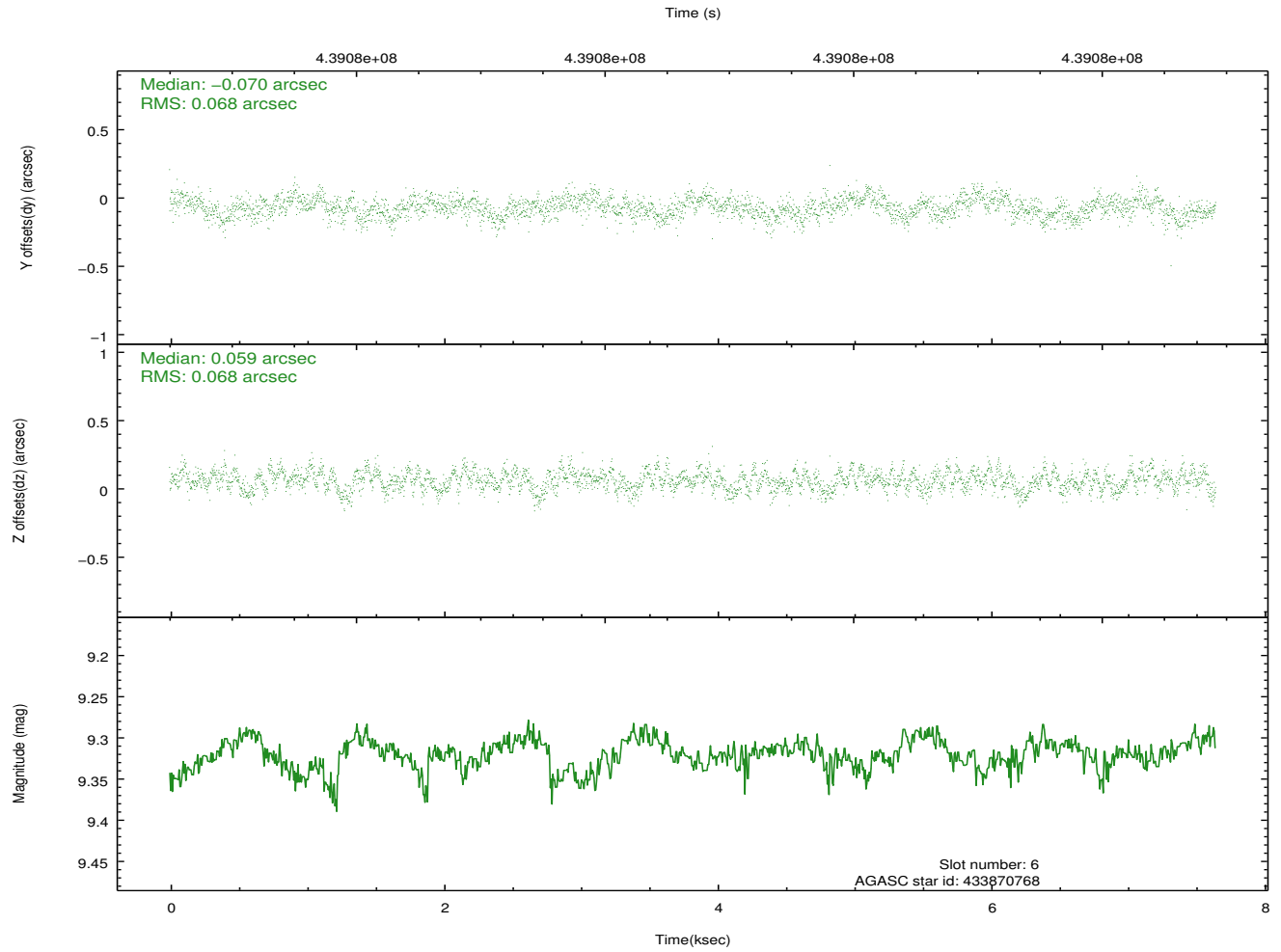
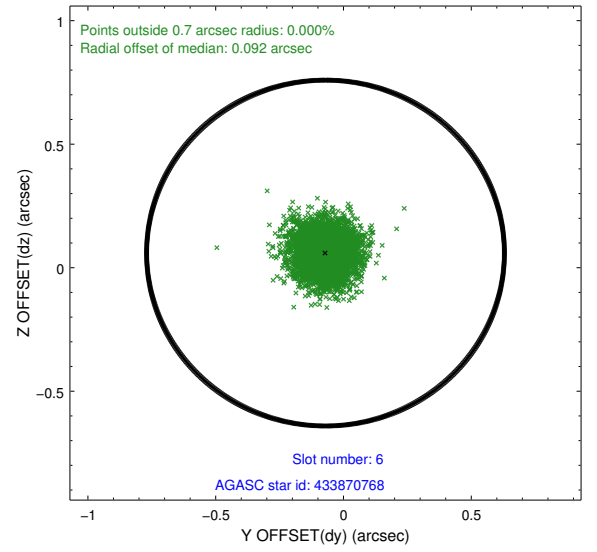
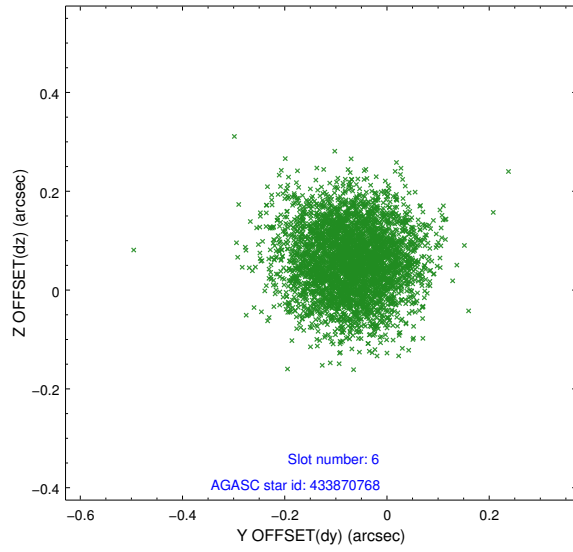
2.4.2 Slot 4



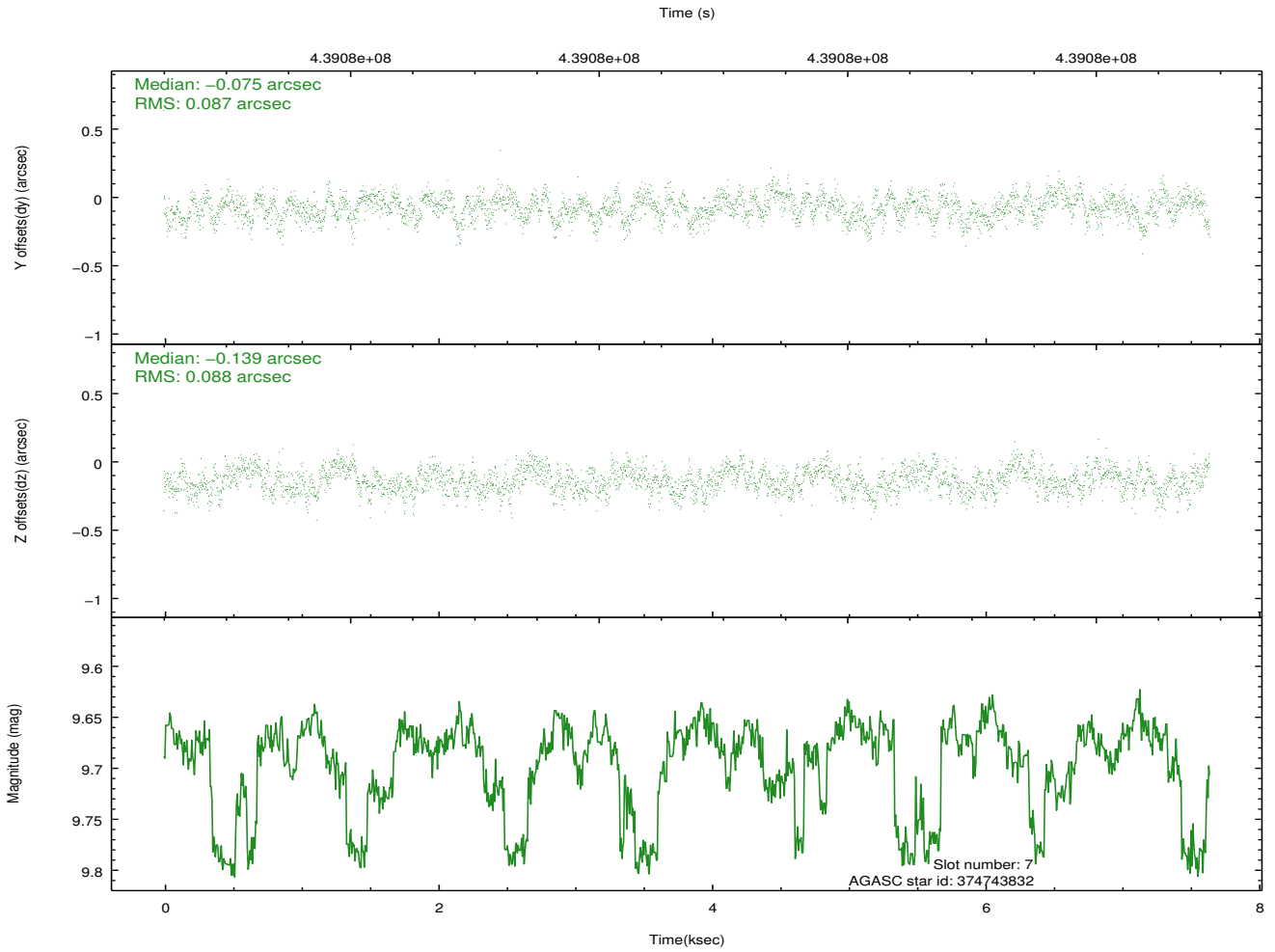
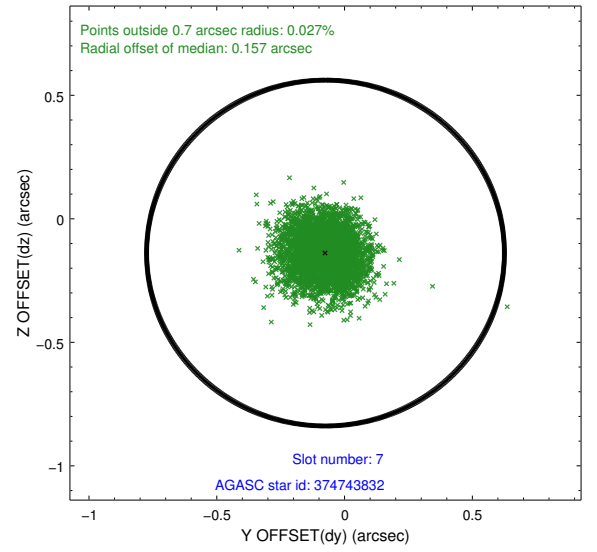
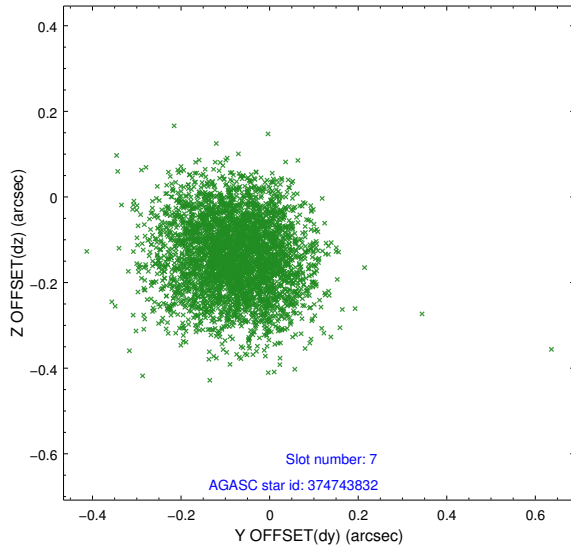
2.4.3 Slot 5



2.4.4 Slot 6

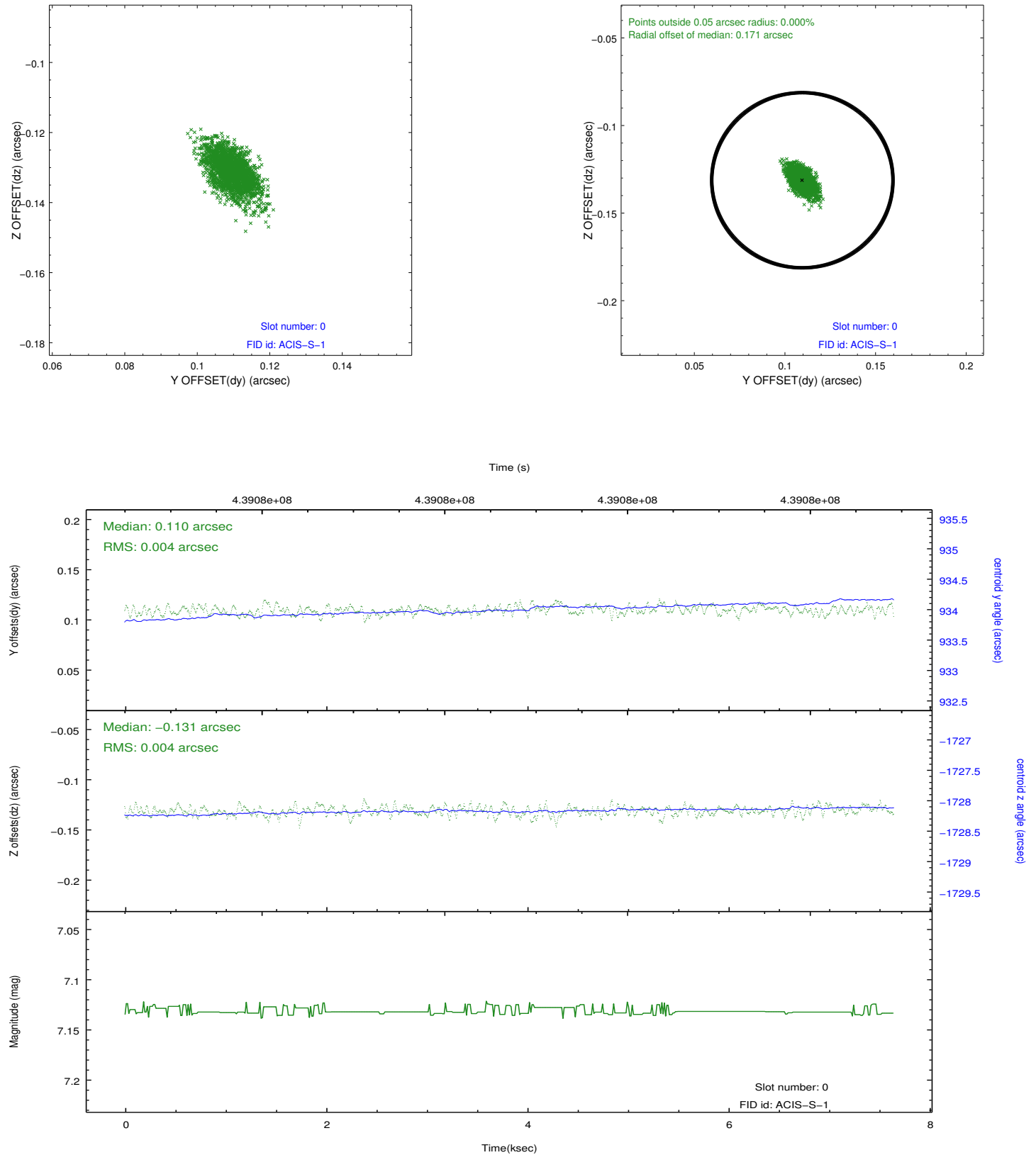


2.4.5 Slot 7

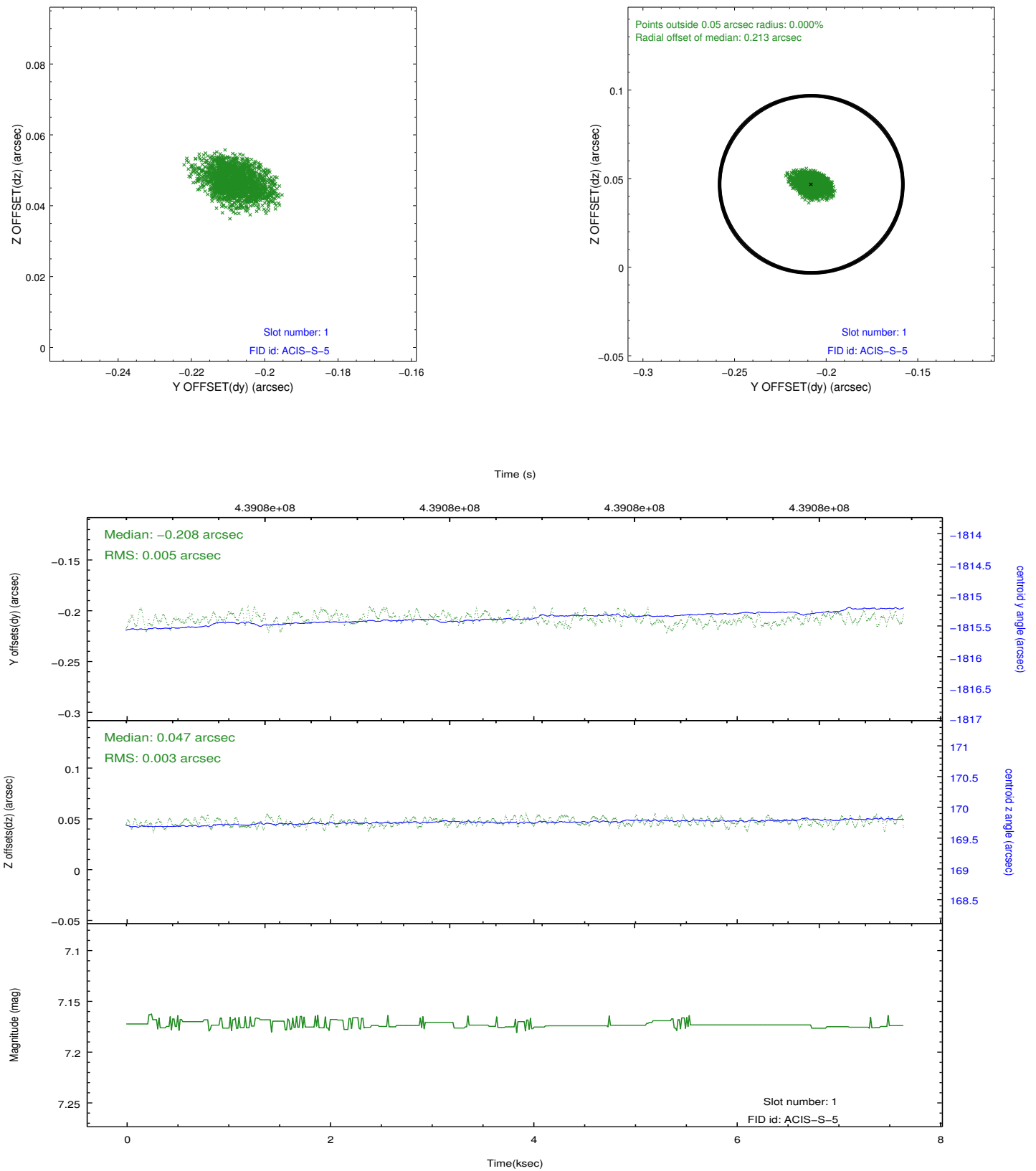


2.5 FID Slots

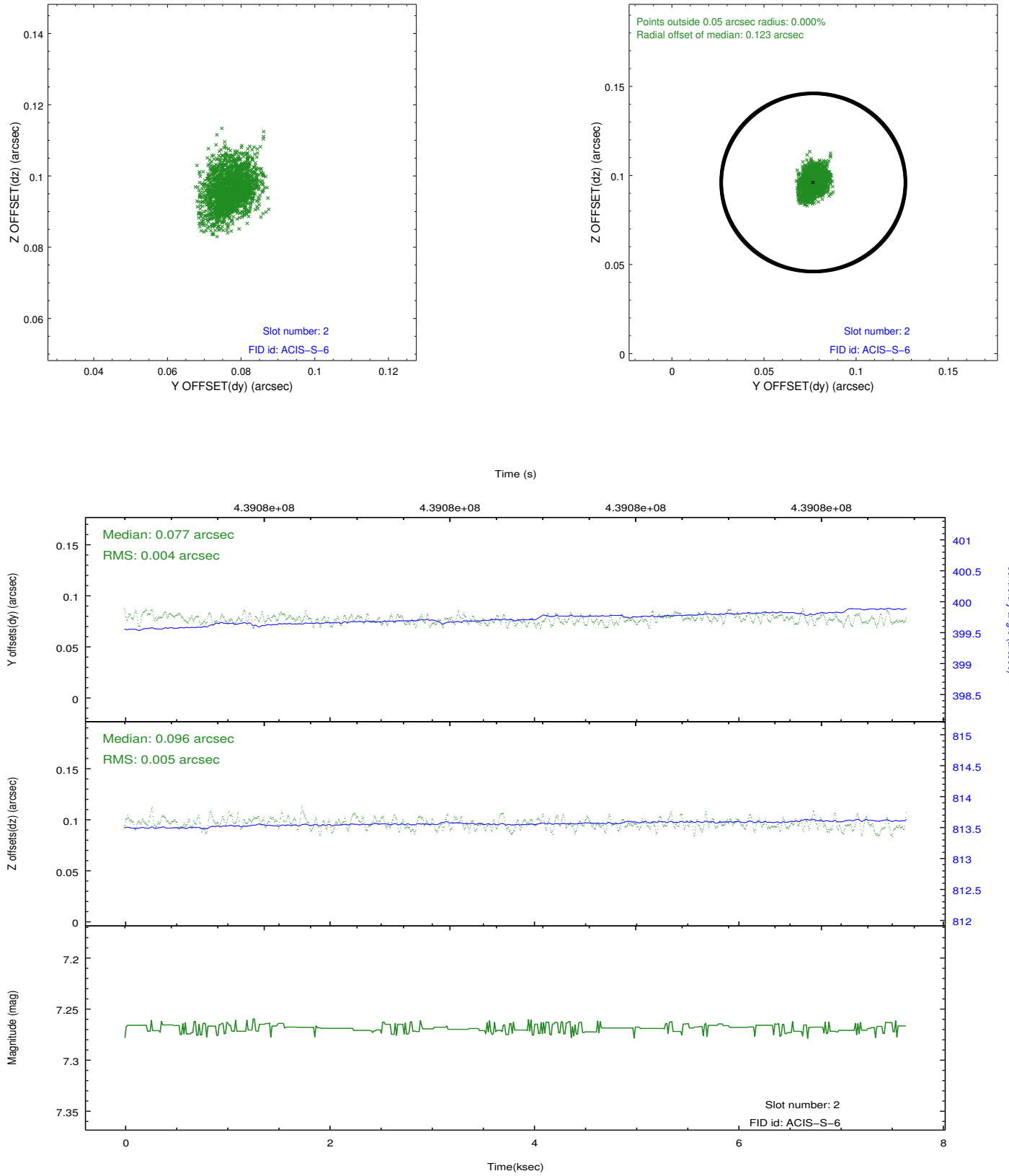
2.5.1 Slot 0



2.5.2 Slot 1



2.5.3 Slot 2



A Summary

A.1 Status

V&V Scientist	Jen Lauer
V&V Date (YYYY-MM-DD)	2012.02.29
V&V Edition	1
V&V Disposition and Status	OK
V&V Charge Time	7.5423000580072

A.2 Comments