

V&V Reference Report

L2 ASCDS Version : 8.4.3.1

Observation 12613 - L2 Version 3
Chandra X-Ray Center

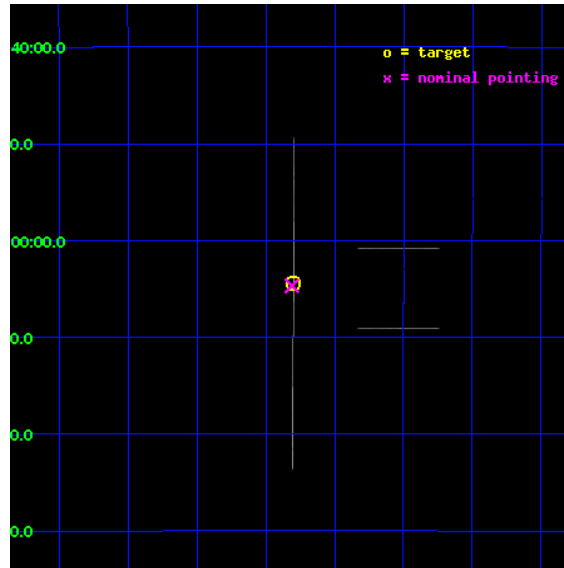
L2 Processing Date : Mar 16 2012

Contents

1	Front	2
2	OBI	3
2.1	OBI	3
2.1.1	Images	3
2.1.2	Bias	3
2.1.3	Parameters	4
2.1.4	Events	4
2.2	Compared Parameters	5
2.3	Aspect	6
2.4	Star Slots	9
2.4.1	Slot 3	9
2.4.2	Slot 4	10
2.4.3	Slot 5	11
2.4.4	Slot 6	12
2.4.5	Slot 7	13
2.5	FID Slots	14
2.5.1	Slot 0	14
2.5.2	Slot 1	15
2.5.3	Slot 2	16
A	Summary	17
A.1	Status	17
A.2	Comments	17

1 Front

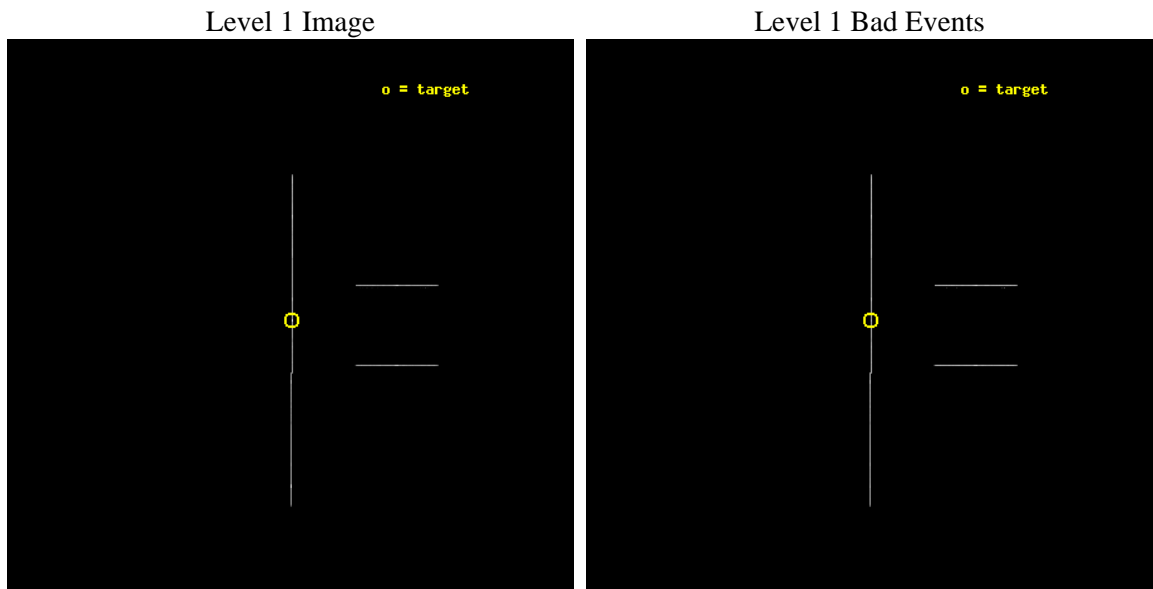
seq_num	501446	Sequence number
obs_id	12613	Observation id
title	TINY HICCUPS TO TITANIC EXPLOSIONS: Tackling Transients in Anomalous X-ray Pulsars	Proposal title
observer	Professor Victoria Kaspi	Principal investigator
object	SWIFT J1822.3-1606	Source name
ra_targ	275.575	Observer's specified target RA [deg]
dec_targ	-16.074111	Observer's specified target Dec [deg]
ra_nom	275.5776638697	Nominal RA [deg]
dec_nom	-16.078217967103	Nominal Dec [deg]
roll_nom	270.15738655365	Nominal Roll [deg]
revision	3	Processing version of data
ontime	13629.75	Sum of GTIs [s]
livetime	13576.508789062	Livetime [s]
ontime2	13629.75	Sum of GTIs [s]
ontime3	13629.75	Sum of GTIs [s]
ontime5	13629.75	Sum of GTIs [s]
ontime6	13629.75	Sum of GTIs [s]
ontime7	13629.75	Sum of GTIs [s]
ontime8	13629.75	Sum of GTIs [s]
l2events	320950	Number of level 2 events



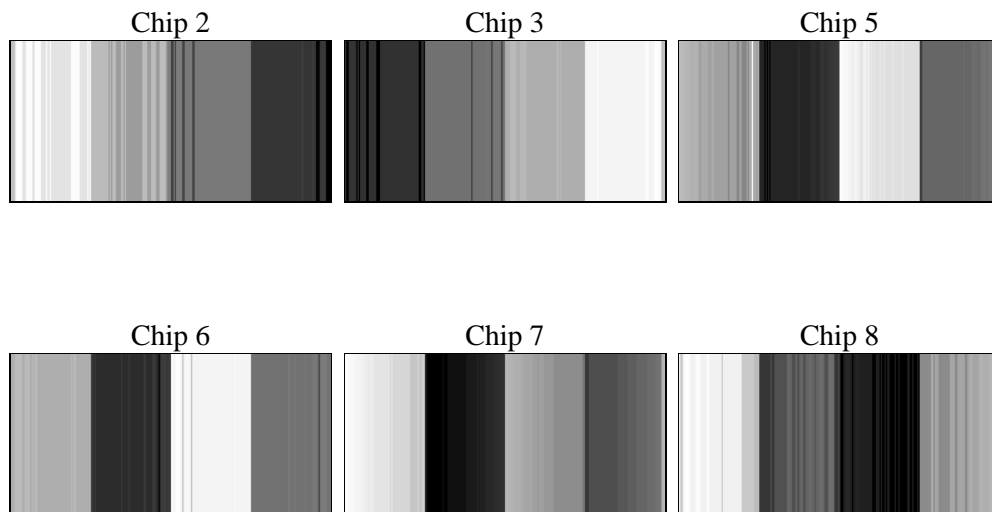
2 OBI

2.1 OBI

2.1.1 Images



2.1.2 Bias



2.1.3 Parameters

obi_num	0	Obi number	sched_exp_time	15000.853000	[s] Scheduled observation exposure time
ascdsver	8.4.3.1	Processing system revision	ontime	13629.75	Sum of GTIs [s]
caldsver	4.4.8	 	ontime2	13629.75	Sum of GTIs [s]
date	2012-03-16T15:57:11	Date and time of file creation	ontime3	13629.75	Sum of GTIs [s]
revision	3	Processing version of data	ontime5	13629.75	Sum of GTIs [s]
			ontime6	13629.75	Sum of GTIs [s]
			ontime7	13629.75	Sum of GTIs [s]
			ontime8	13629.75	Sum of GTIs [s]
			l1events	1558785	Number of level 1 events

2.1.4 Events

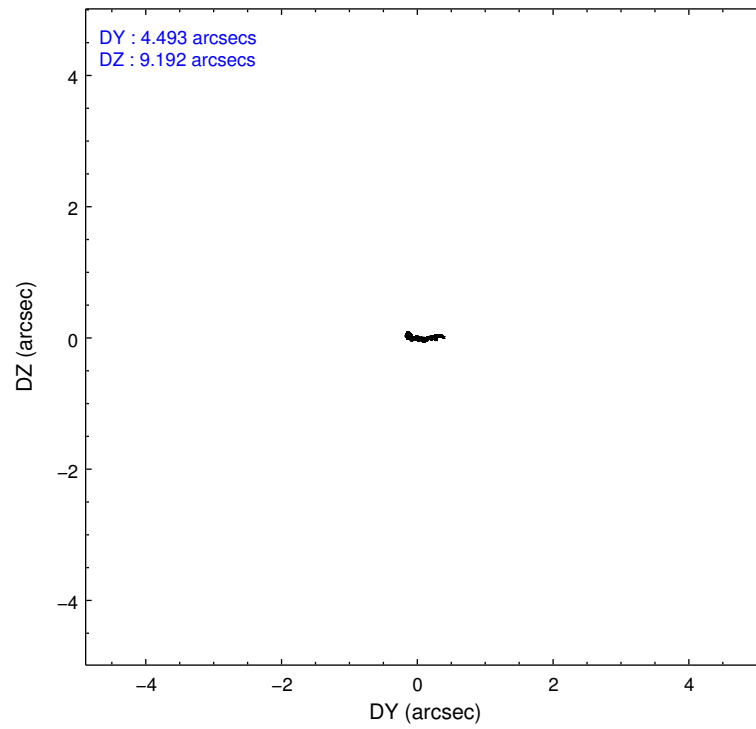
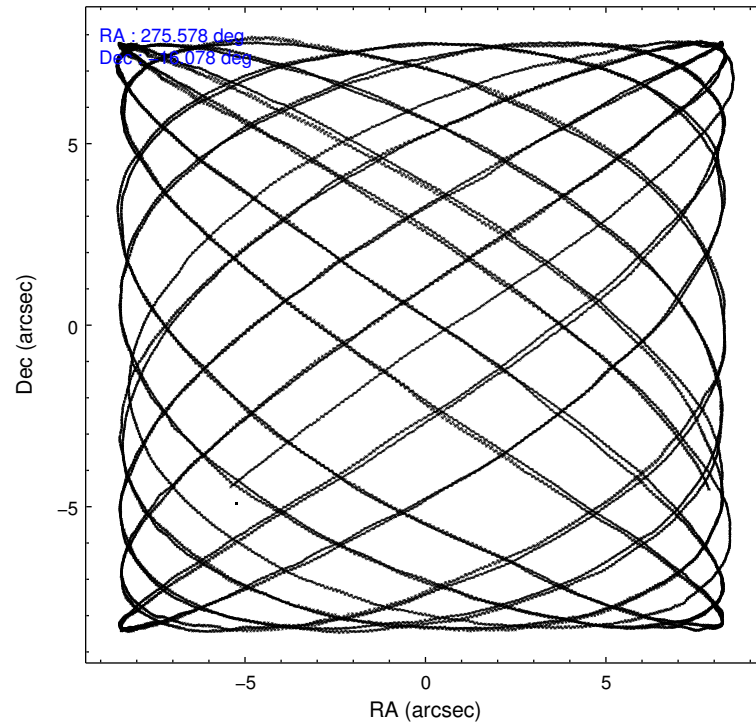
	ccd 2	ccd 3	ccd 5	ccd 6	ccd 7	ccd 8		ccd 2	ccd 3	ccd 5	ccd 6	ccd 7	ccd 8
level 1 events	196958	189628	336257	191377	307712	336853	grade 0 events	2900	2595	94279	2609	33577	20765
rejected events	177354	169697	129927	170798	128138	266545		1%	1%	28%	1%	10%	6%
rejected %	90%	89%	38%	89%	41%	79%	grade 1 events	102	103	362	101	550	278
								0%	0%	0%	0%	0%	0%
							grade 2 events	8249	7821	61047	8487	50749	17974
								4%	4%	18%	4%	16%	5%
							grade 3 events	2354	2796	2971	2508	16347	9036
								1%	1%	0%	1%	5%	2%
							grade 4 events	2418	2486	2803	2370	16047	8397
								1%	1%	0%	1%	5%	2%
							grade 5 events	3874	4393	10620	4465	13912	6738
								1%	2%	3%	2%	4%	2%
							grade 6 events	3748	4278	45864	4676	63453	14325
								1%	2%	13%	2%	20%	4%
							grade 7 events	173313	165156	118311	166161	113077	259340
								87%	87%	35%	86%	36%	76%

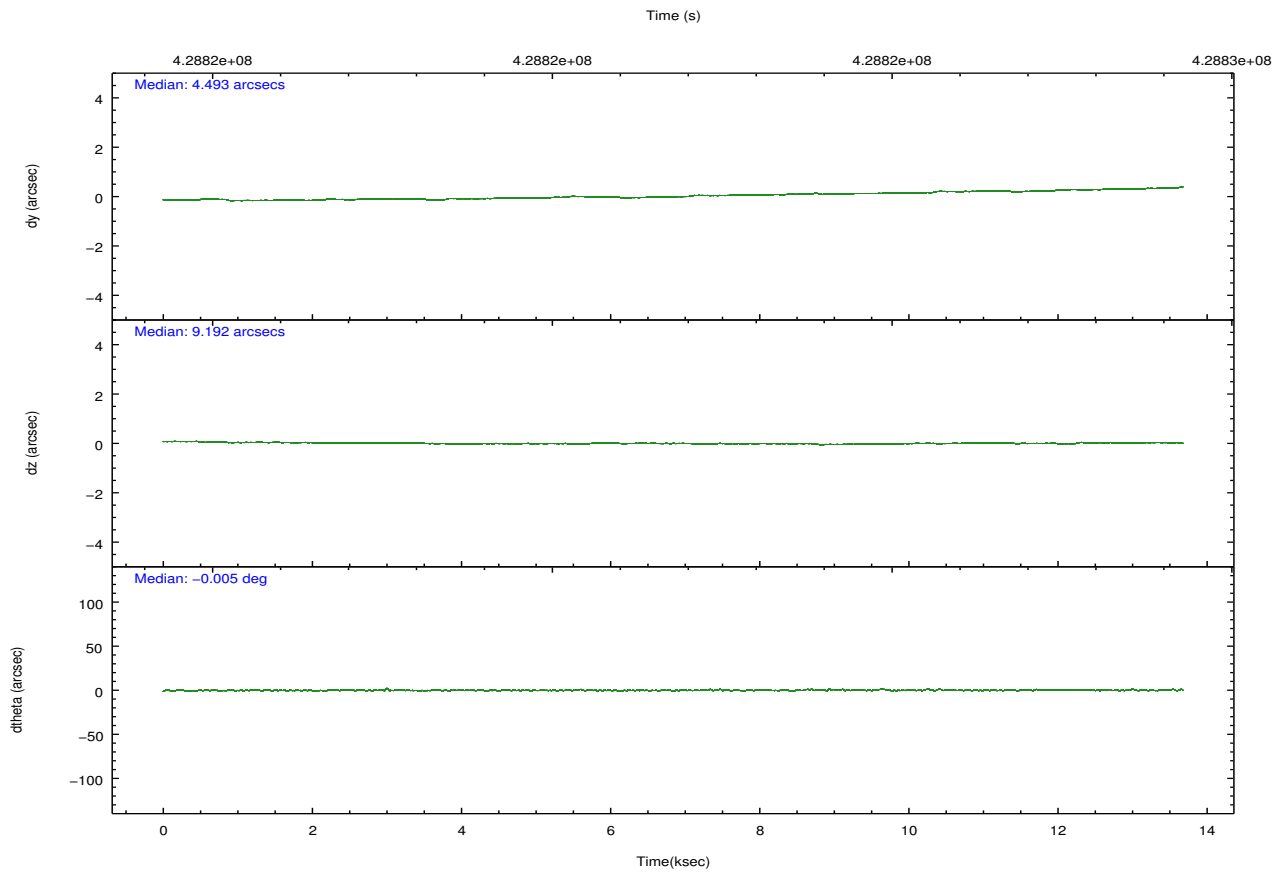
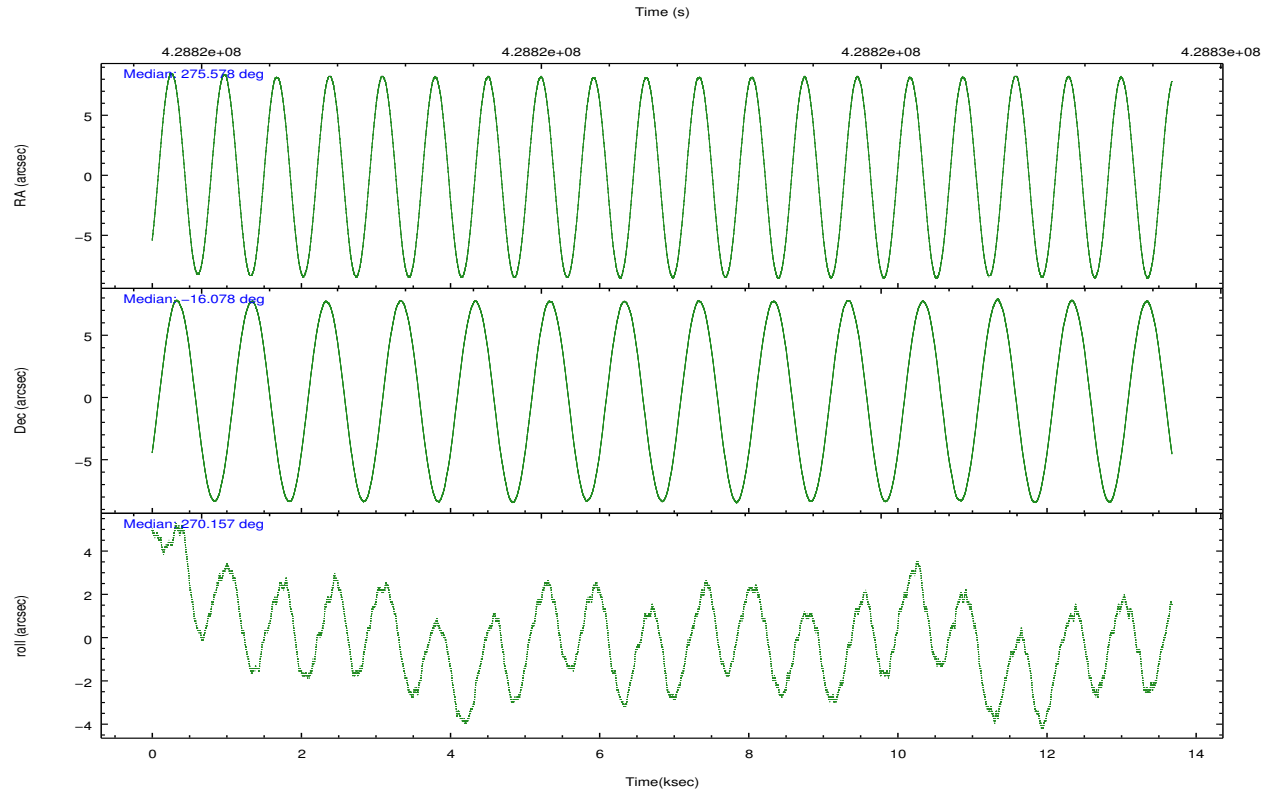
2.2 Compared Parameters

Parameter	Planned	Actual
Instrument	ACIS	ACIS
Detector	ACIS-235678	ACIS-235678
Grating	NONE	NONE
Data mode	CC33_FAINT	CC33_FAINT
Observation mode	POINTING	POINTING
[deg] Pointing RA	275.563029	275.5776638697008
[deg] Pointing Dec	-16.054779	-16.07821796710311
[deg] Pointing Roll	269.996692	270.1573865536464
[mm] SIM focus pos	-0.68282252473119	-0.68282252473119
[mm] SIM defocus	0.001444942264670734	0.001444942264670734
[mm] SIM translation stage pos	-190.1400660499	-190.1400660499
[mm] SIM translation stage offset	0.007542945932812017	0.007542945932812017
[s] Observation start time (MET)	428814941.184000	428814941.184
Observation start date	2011-08-04T03:15:41	2011-08-04T03:15:41
[s] Observation end time (MET)	428828620.000000	428828620
Observation end date	2011-08-04T07:03:40	2011-08-04T07:03:39
Read mode	CONTINUOUS	CONTINUOUS

Parameter	Planned	Actual
Obspar format version number	7	7
Obspar file type	PREDICTED	ACTUAL
Obspar update status	OVERRIDE	OVERRIDE
Number of optional ACIS chips dropped	0	0
On-chip summing requested	N	N
Subarray requested	NONE	NONE
Alternating exposures requested	N	N
[s] Primary exposure time	0.000000	0.000000

2.3 Aspect



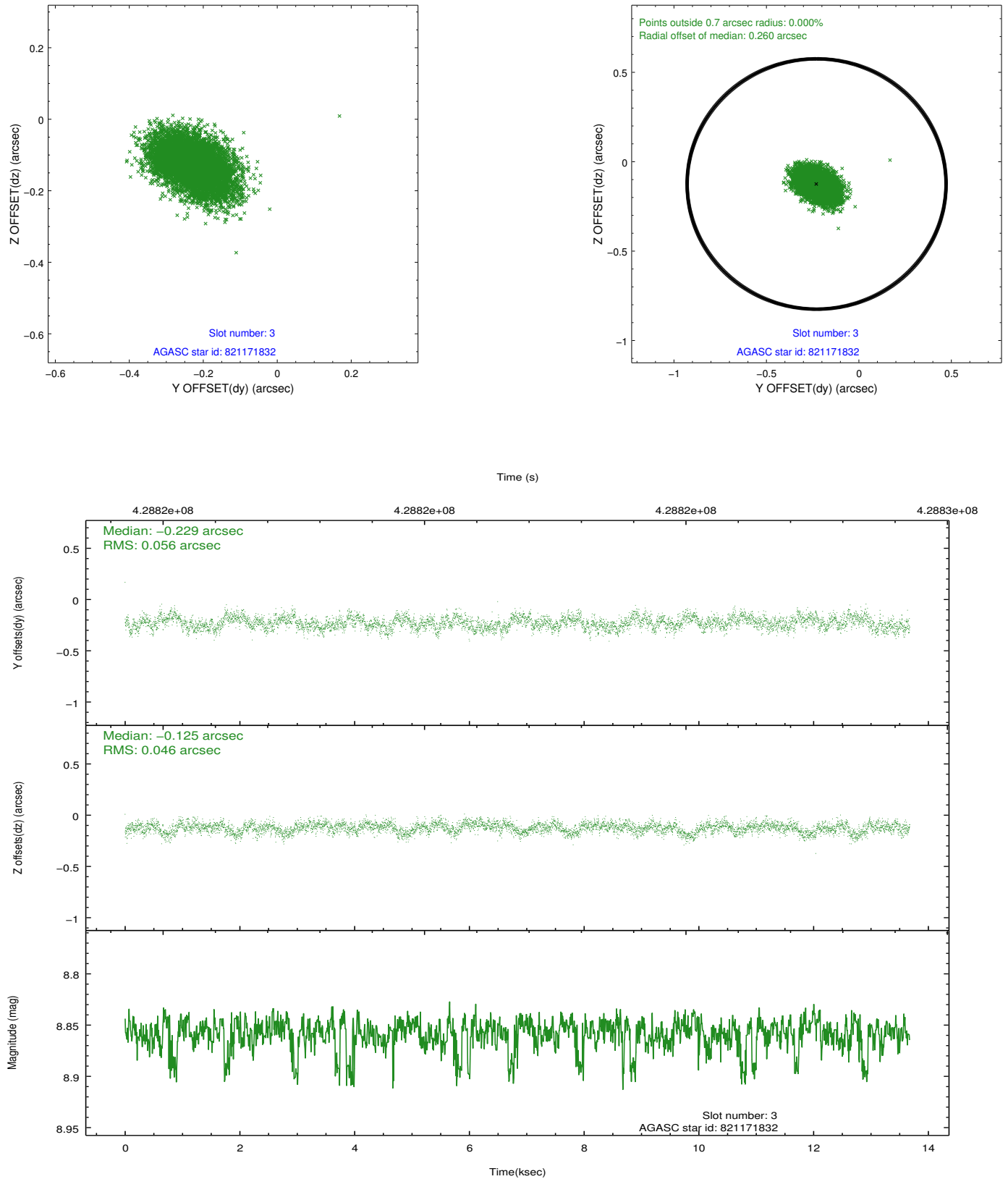


Slot Statistics

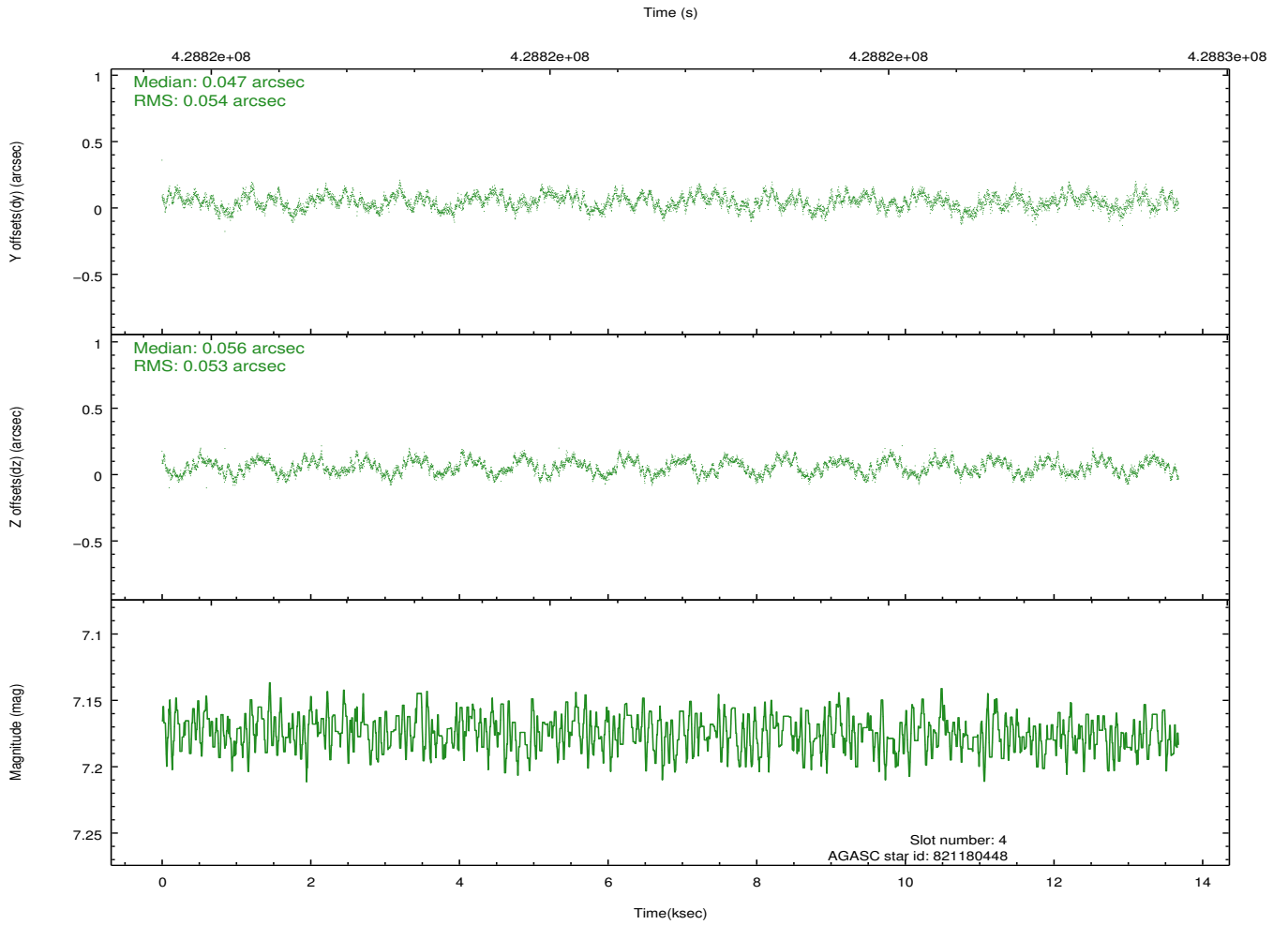
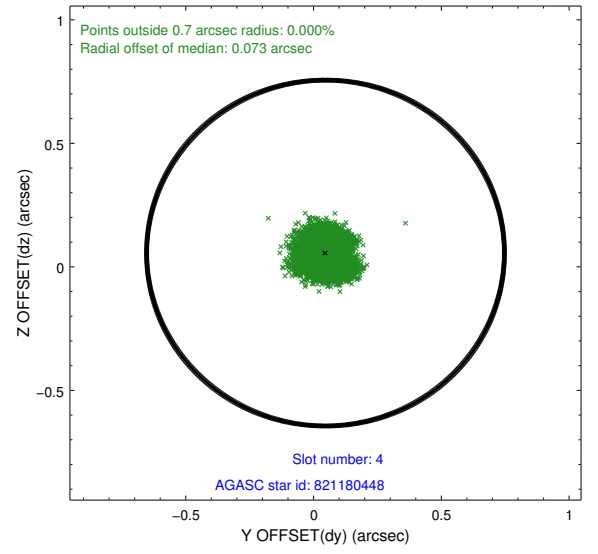
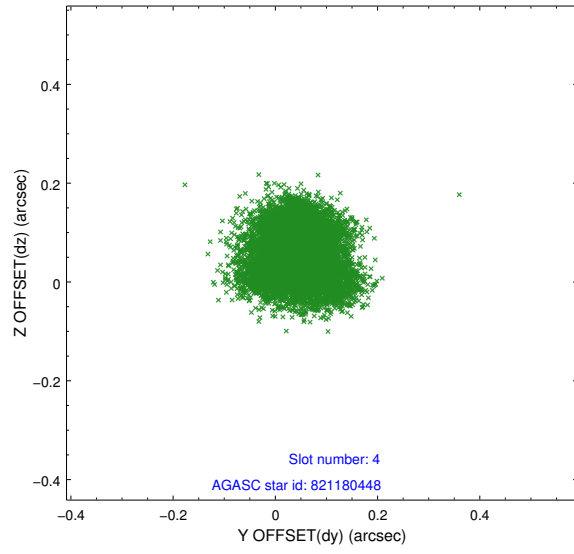
slot	status	id	mag	n_pts	med_dy	med_dz	dr1	dr2	ra	dec	mean_y	mean_z
0	FID	ACIS-S-1	7.12	3336	0.083	-0.048	0.014	0.021	0.000000	0.000000	938.88	-1726.11
1	FID	ACIS-S-5	7.17	3336	-0.168	0.048	0.012	0.019	0.000000	0.000000	-1810.15	171.22
2	FID	ACIS-S-6	7.27	3337	0.063	0.013	0.008	0.014	0.000000	0.000000	404.07	815.51
3	GUIDE	821171832	8.86	6649	-0.229	-0.125	0.077	0.126	275.792275	-15.610164	-1599.92	794.79
4	GUIDE	821180448	7.17	6672	0.047	0.056	0.083	0.122	275.453560	-16.324585	971.77	-377.83
5	GUIDE	821183768	9.23	6664	0.114	-0.075	0.080	0.135	275.638665	-16.595886	1948.82	261.08
6	GUIDE	821175360	8.52	6669	0.005	0.145	0.067	0.110	275.121622	-15.398191	-2361.22	-1531.95
7	GUIDE	821169272	7.17	6672	0.065	0.001	0.052	0.083	275.312025	-16.375484	1155.38	-866.99

2.4 Star Slots

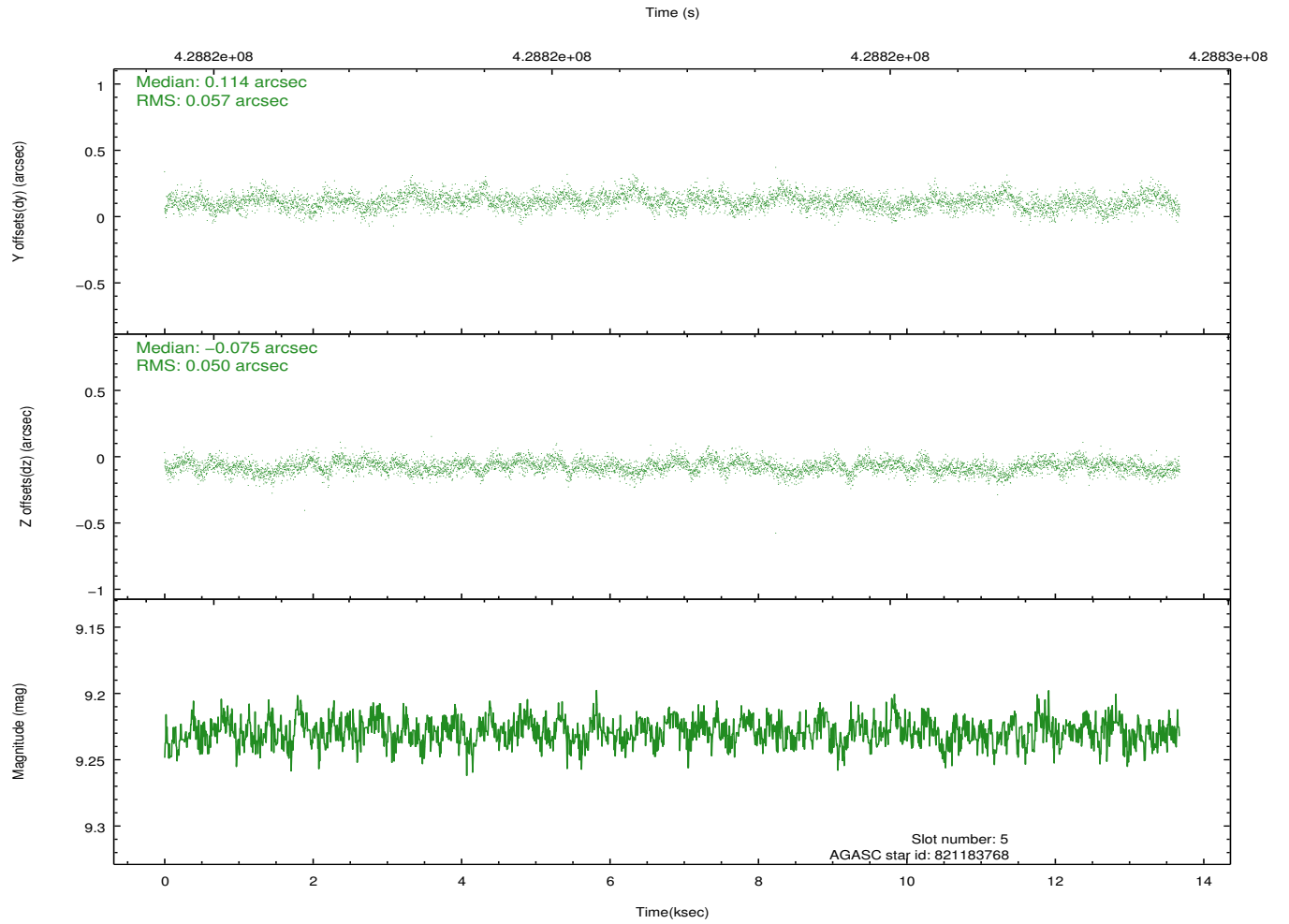
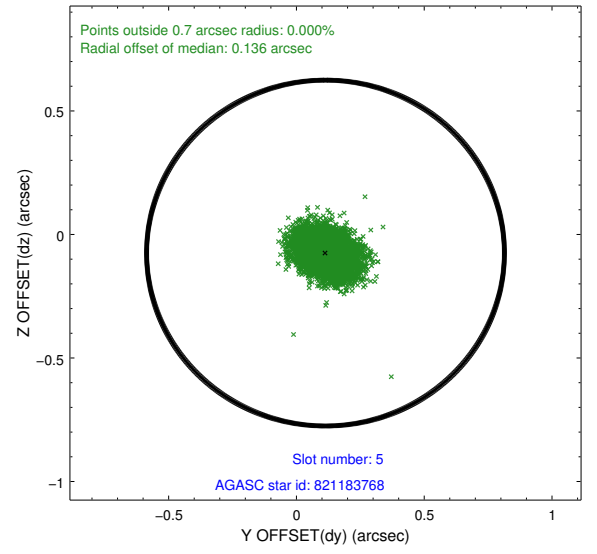
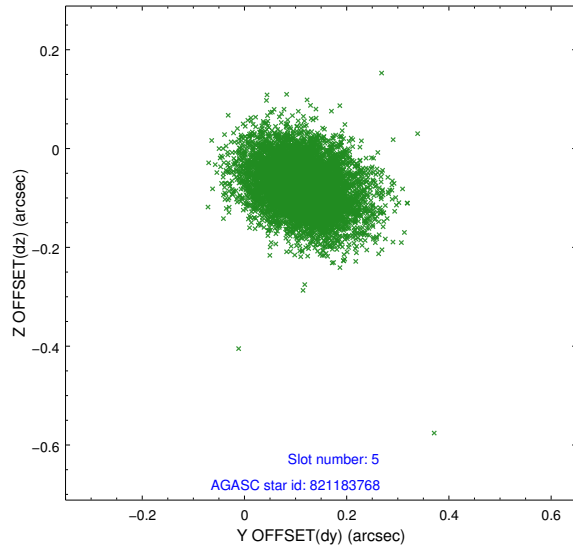
2.4.1 Slot 3



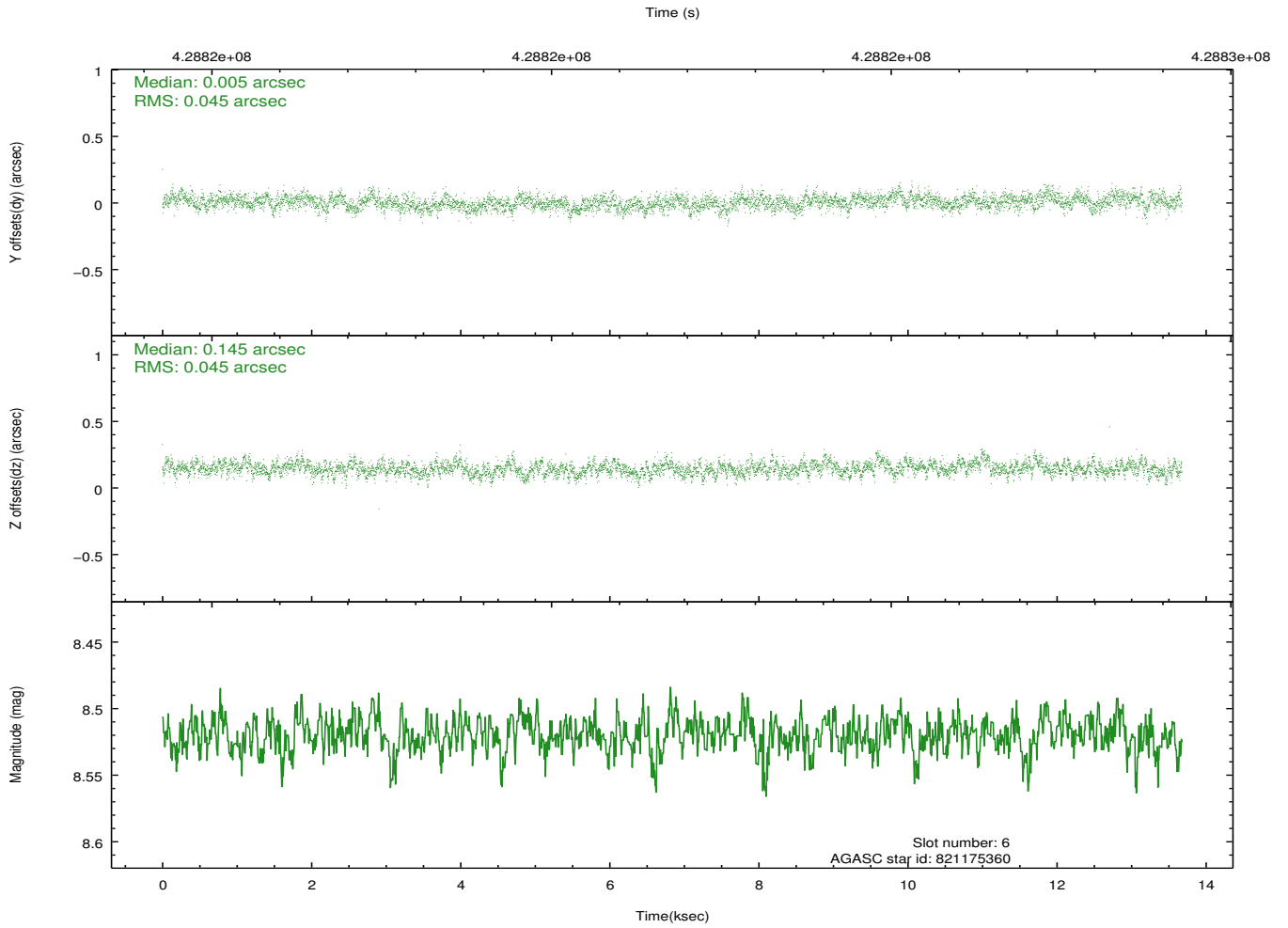
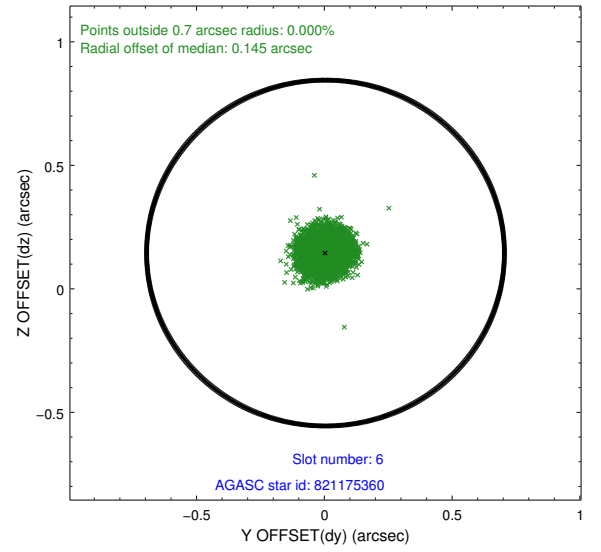
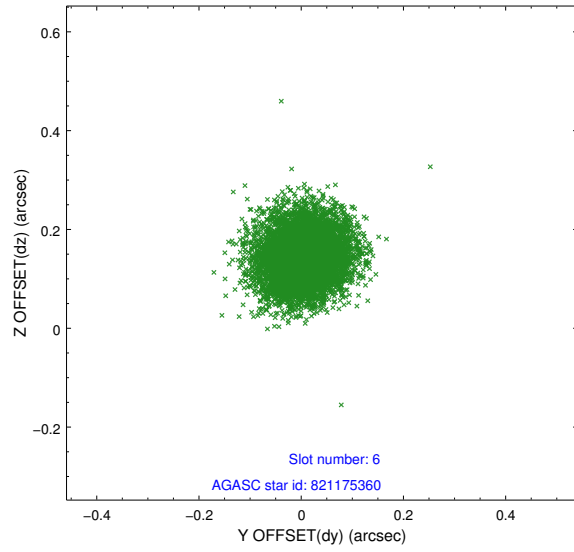
2.4.2 Slot 4



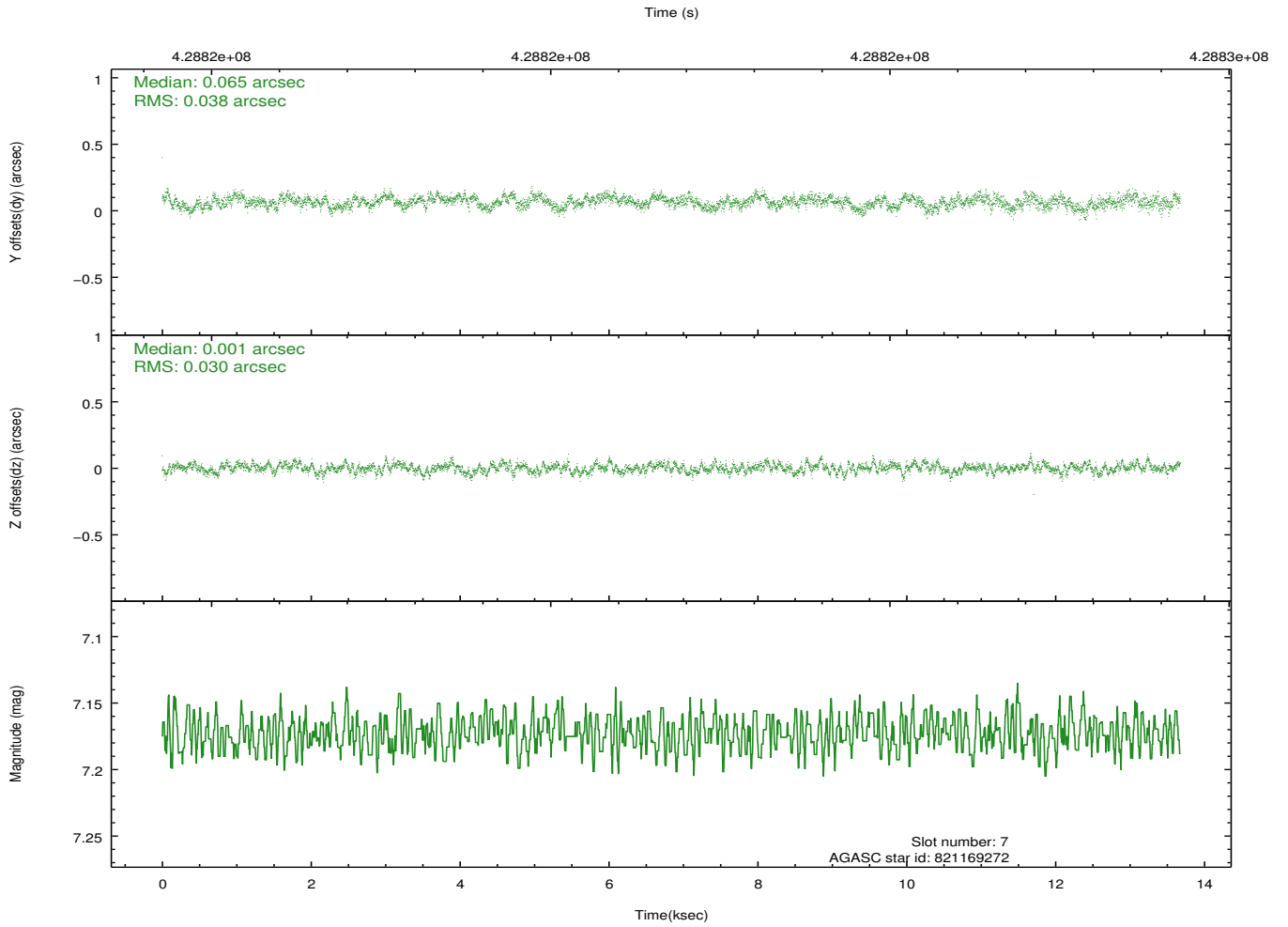
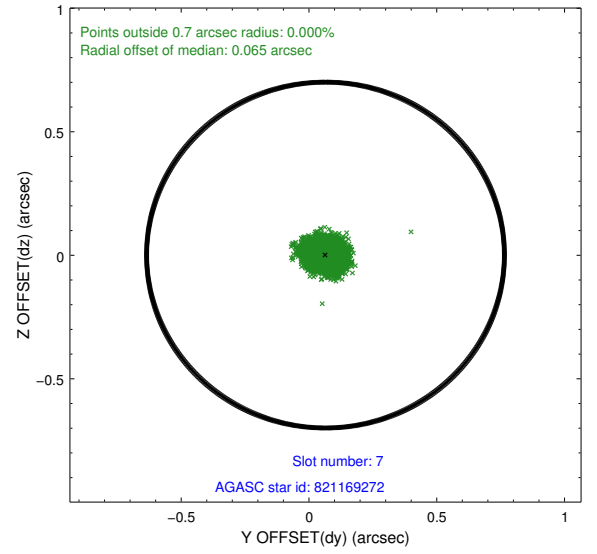
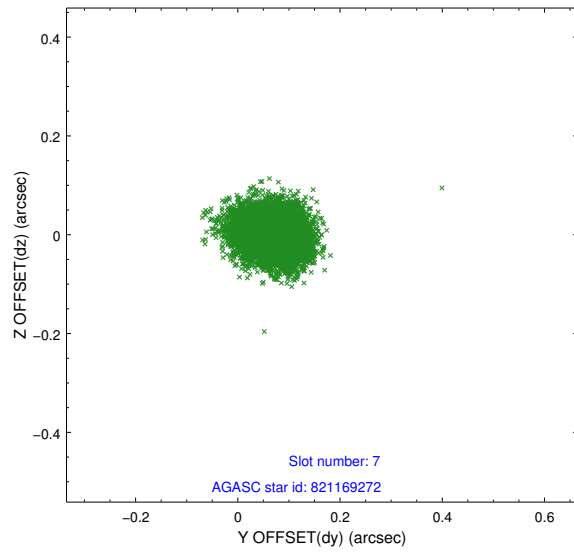
2.4.3 Slot 5



2.4.4 Slot 6

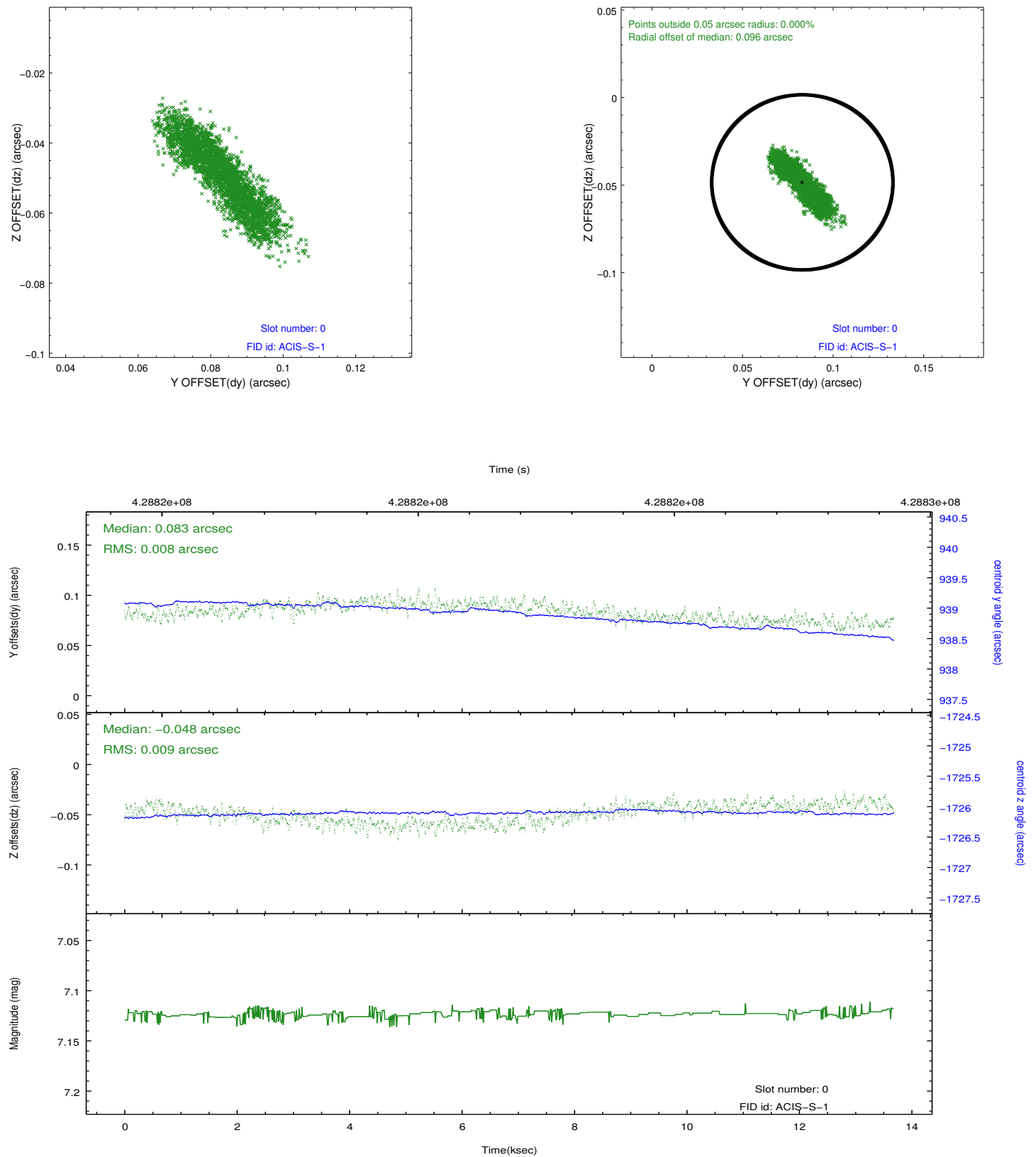


2.4.5 Slot 7

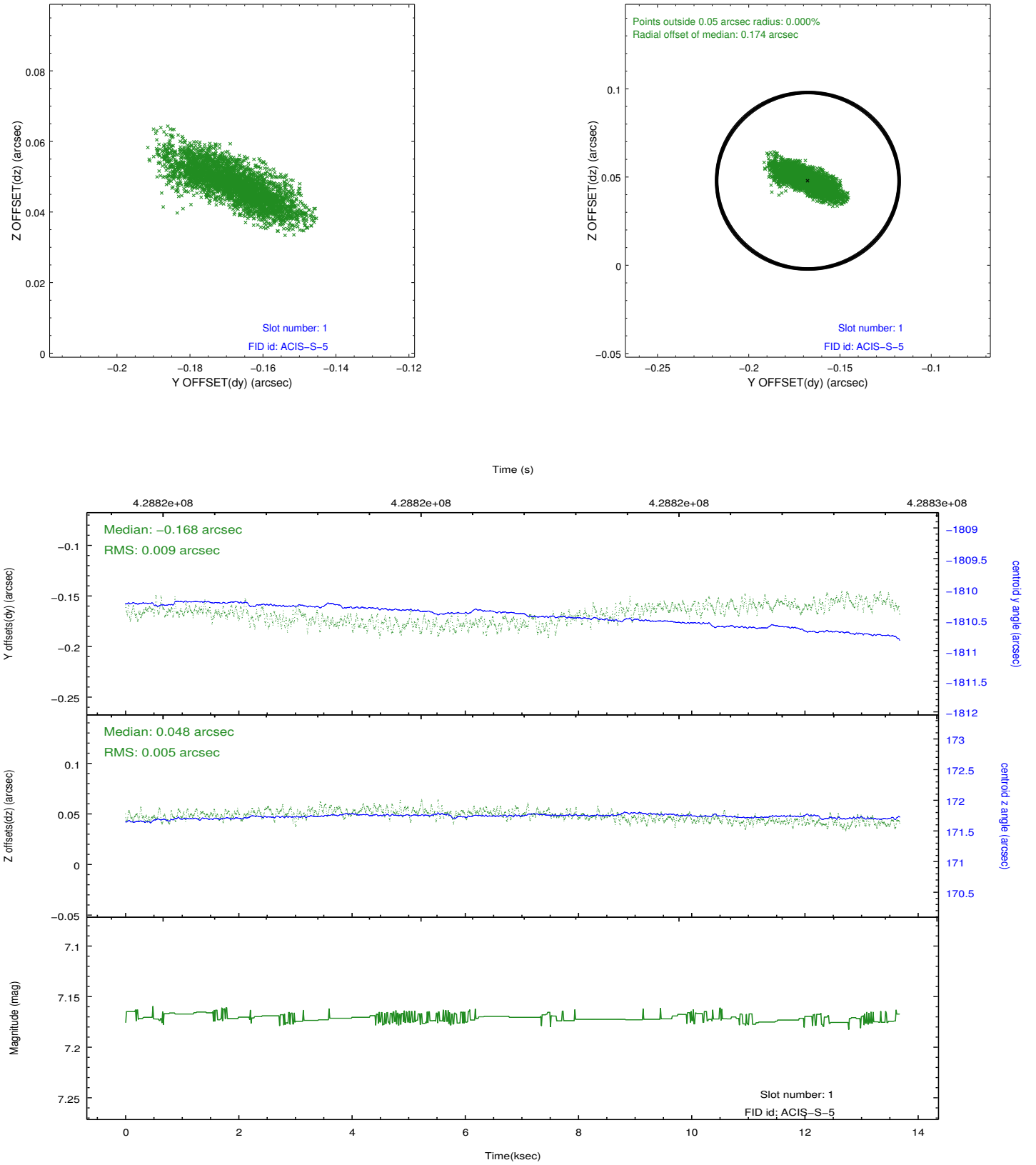


2.5 FID Slots

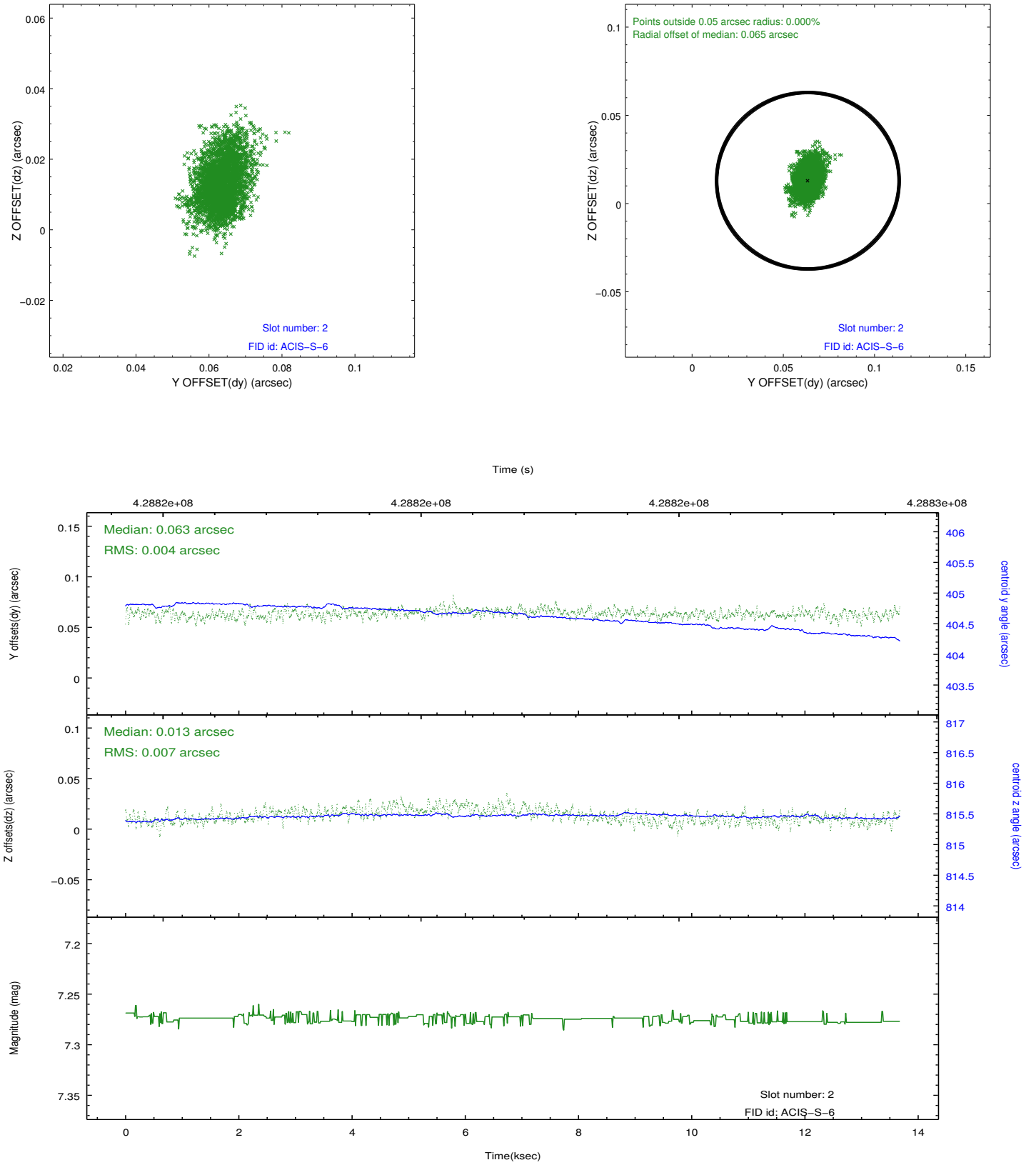
2.5.1 Slot 0



2.5.2 Slot 1



2.5.3 Slot 2



A Summary

A.1 Status

V&V Scientist	Joy Nichols
V&V Date (YYYY-MM-DD)	2012.03.19
V&V Edition	1
V&V Disposition and Status	OK
V&V Charge Time	13.79175

A.2 Comments

Charge time:

Charge time for this ObsId remains at previous value of 13.79175 ks.

====

This observation was interrupted by safing of the science instruments onboard Chandra due to high solar radiation environment. The observation was interrupted at day 216, 07:03:34 GMT. Due to a high radiation environment, the instruments were safed and the observation terminated early. This observation has been reprocessed so that the aspect solution correctly handles the instrument safing and maneuver activities at the end of the observation.

Future software releases may be able to include a small amount of additional time when enhancements are implemented.