

V&V Reference Report

L2 ASCDS Version : 8.4.5

Observation 12108 - L2 Version 2
Chandra X-Ray Center

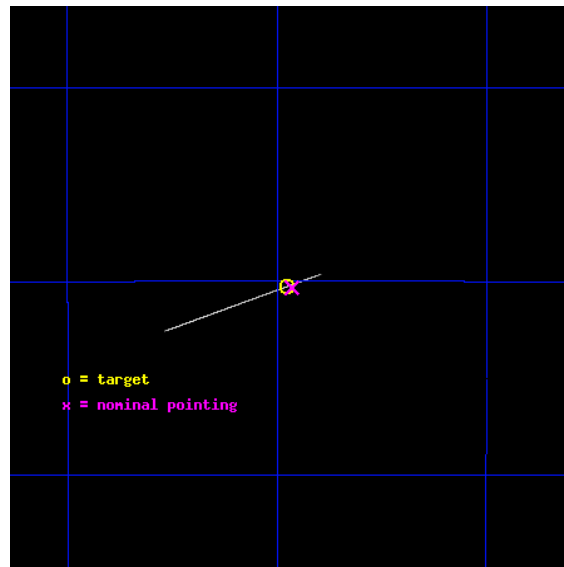
L2 Processing Date : Jul 1 2012

Contents

1	Front	2
2	OBI	3
2.1	OBI	3
2.1.1	Images	3
2.1.2	Bias	3
2.1.3	Parameters	4
2.1.4	Events	4
2.2	Compared Parameters	5
2.3	Aspect	6
2.4	Star Slots	9
2.4.1	Slot 3	9
2.4.2	Slot 4	10
2.4.3	Slot 5	11
2.4.4	Slot 6	12
2.4.5	Slot 7	13
2.5	FID Slots	14
2.5.1	Slot 0	14
2.5.2	Slot 1	15
2.5.3	Slot 2	16
A	Summary	17
A.1	Status	17
A.2	Comments	17

1 Front

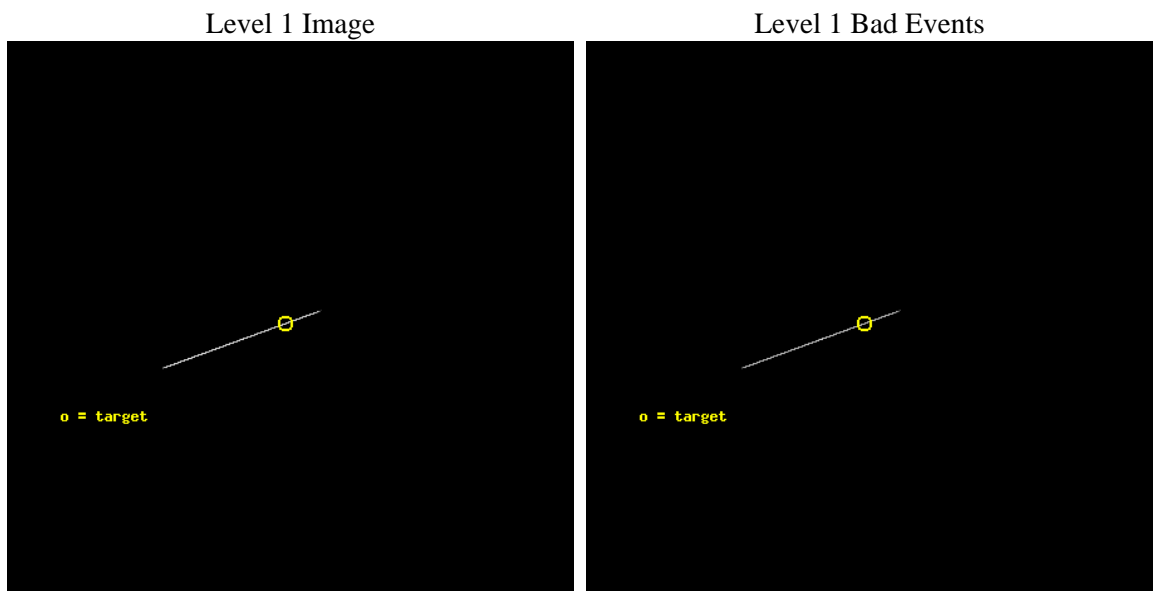
seq_num	501358	Sequence number
obs_id	12108	Observation id
title	Measuring the Magnetic Field of the CCO Pulsar in Puppis A	Proposa
observer	Prof. Jules Halpern	Principal investigator
object	PSR J0821-4300	Source name
ra_targ	125.48875	Observer's specified target RA [deg]
dec_targ	-43.004889	Observer's specified target Dec [deg]
ra_nom	125.48228140096	Nominal RA [deg]
dec_nom	-43.005879579935	Nominal Dec [deg]
roll_nom	160.15221349064	Nominal Roll [deg]
revision	2	Processing version of data
ontime	34163.25	Sum of GTIs [s]
livetime	34029.799804688	Livetime [s]
ontime7	34163.25	Sum of GTIs [s]
l2events	1148483	Number of level 2 events



2 OBI

2.1 OBI

2.1.1 Images



2.1.2 Bias

Chip 7



2.1.3 Parameters

obi_num	0	Obi number	sched_exp_time	34000.000000	[s] Scheduled observation exposure time
ascdsver	8.4.5	Processing system revision	ontime	34163.25	Sum of GTIs [s]
caldsver	4.5.0	 	ontime7	34163.25	Sum of GTIs [s]
date	2012-07-01T17:25:46	Date and time of file creation	l1events	1511301	Number of level 1 events
revision	2	Processing version of data			

2.1.4 Events

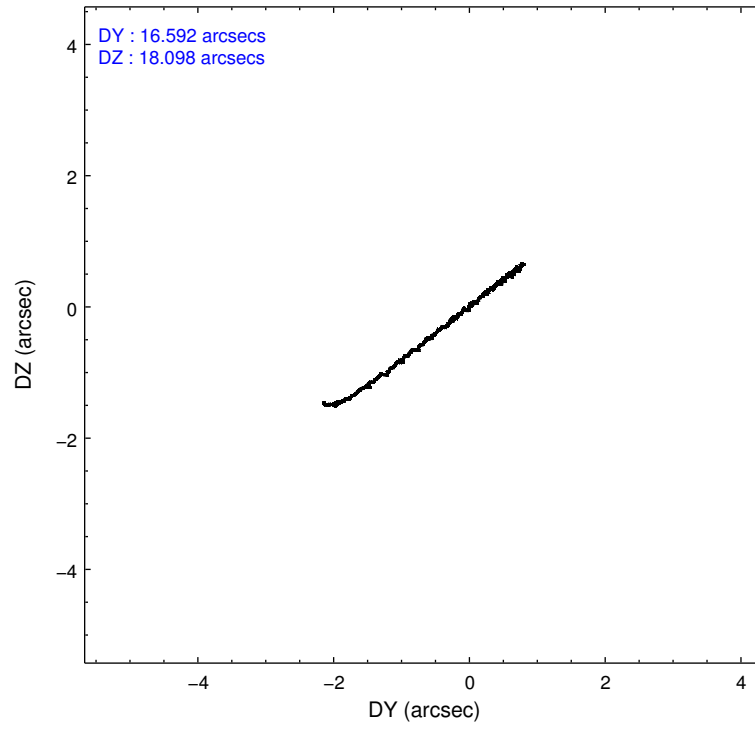
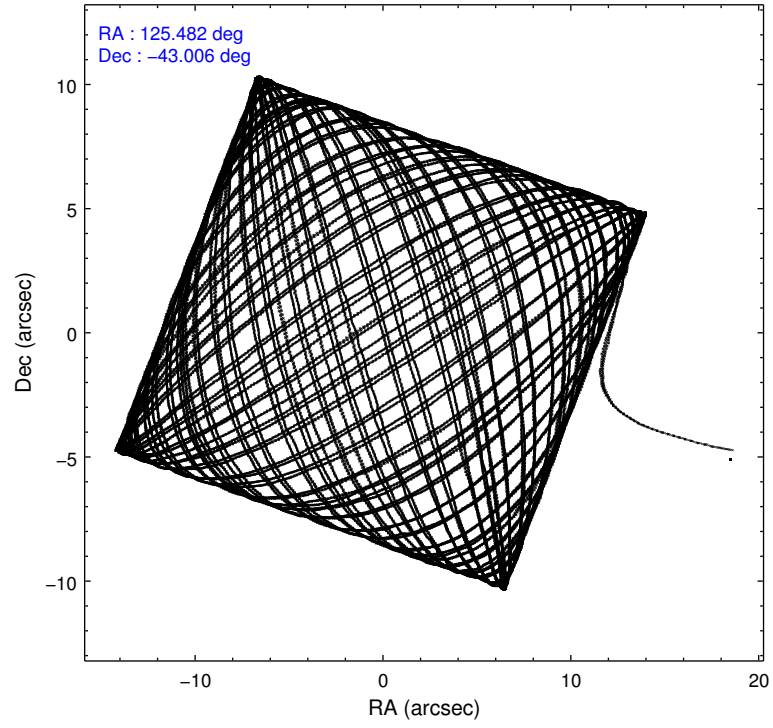
	ccd 7
level 1 events	1511301
rejected events	338972
rejected %	22%

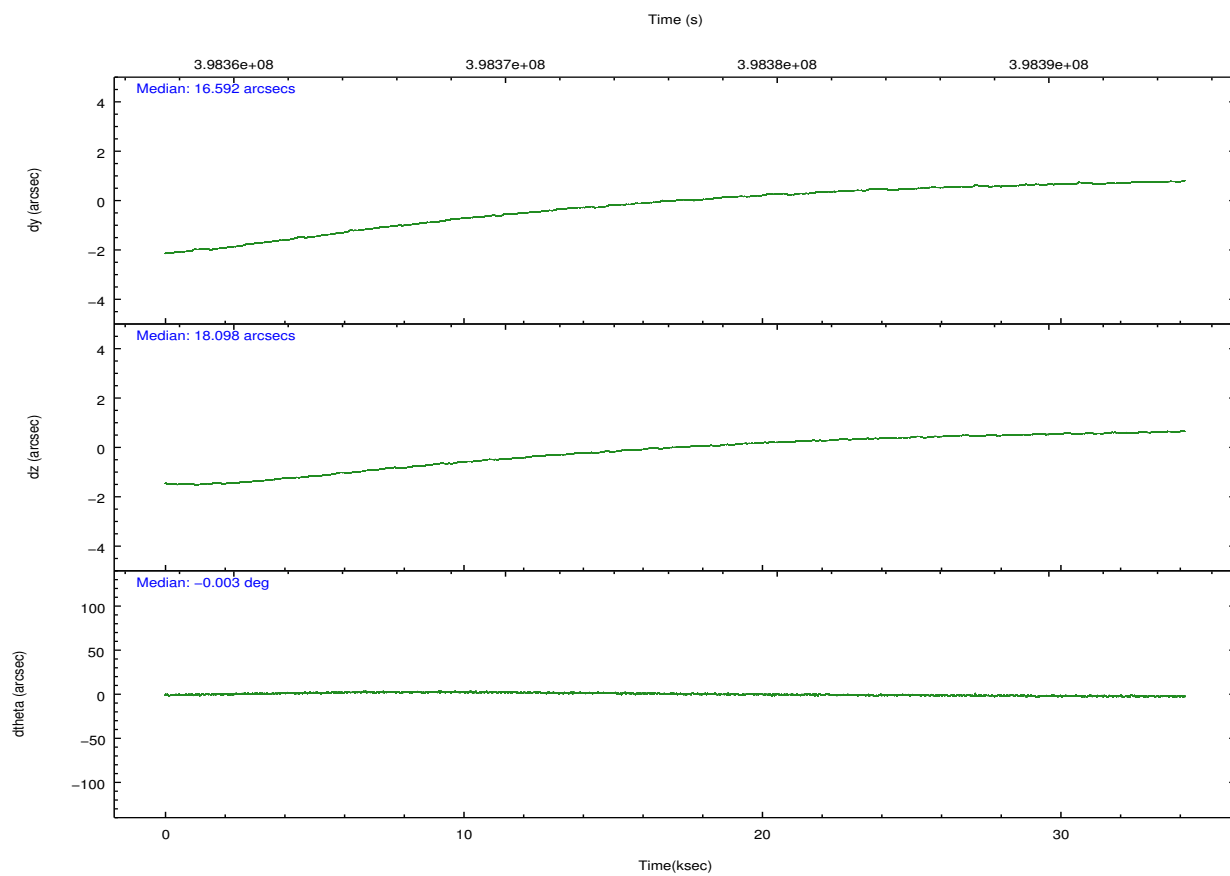
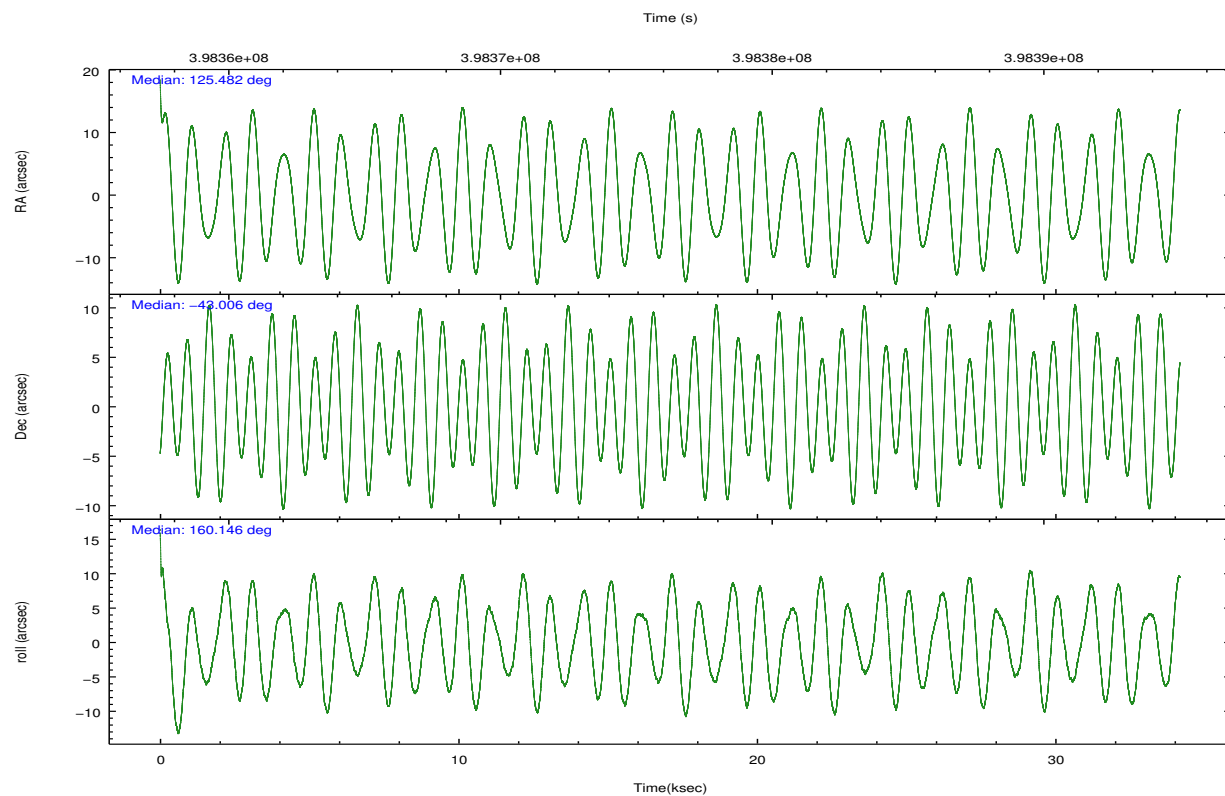
	ccd 7
grade 0 events	317093
	20%
grade 1 events	768
	0%
grade 2 events	368092
	24%
grade 3 events	116541
	7%
grade 4 events	115334
	7%
grade 5 events	40249
	2%
grade 6 events	257633
	17%
grade 7 events	295591
	19%

2.2 Compared Parameters

Parameter	Planned	Actual	Parameter	Planned	Actual
Instrument	ACIS	ACIS	Obspar format version number	7	7
Detector	ACIS-7	ACIS-7	Obspar file type	PREDICTED	ACTUAL
Grating	NONE	NONE	Obspar update status	NONE	UPDATED
Data mode	CC33_FAINT	CC33_FAINT	Number of optional ACIS chips dropped	0	0
Observation mode	POINTING	POINTING	On-chip summing requested	N	N
[deg] Pointing RA	125.518972	125.4822814009593	Subarray requested	NONE	NONE
[deg] Pointing Dec	-43.000682	-43.00587957993528	Alternating exposures requested	N	N
[deg] Pointing Roll	160.020607	160.1522134906432	[s] Primary exposure time	0.000000	0
[s] Window start time (MET)	397008066.184000	397008066.184000			
[s] Window stop time (MET)	399686406.184000	399686406.184000			
[mm] SIM focus pos	-0.684267	-0.6828225247311905			
[mm] SIM defocus	0	0.001444936568705701			
[mm] SIM translation stage pos	-190.132523	-190.1425803651734			
[mm] SIM translation stage offset	0	0.01005778216563158			
[s] Observation start time (MET)	398359324.184000	398358328.24955			
Observation start date	2010-08-16T15:20:58	2010-08-16T15:05:28			
[s] Observation end time (MET)	398393324.184000	398393812.72637			
Observation end date	2010-08-17T00:47:38	2010-08-17T00:56:52			
Read mode	CONTINUOUS	CONTINUOUS			

2.3 Aspect



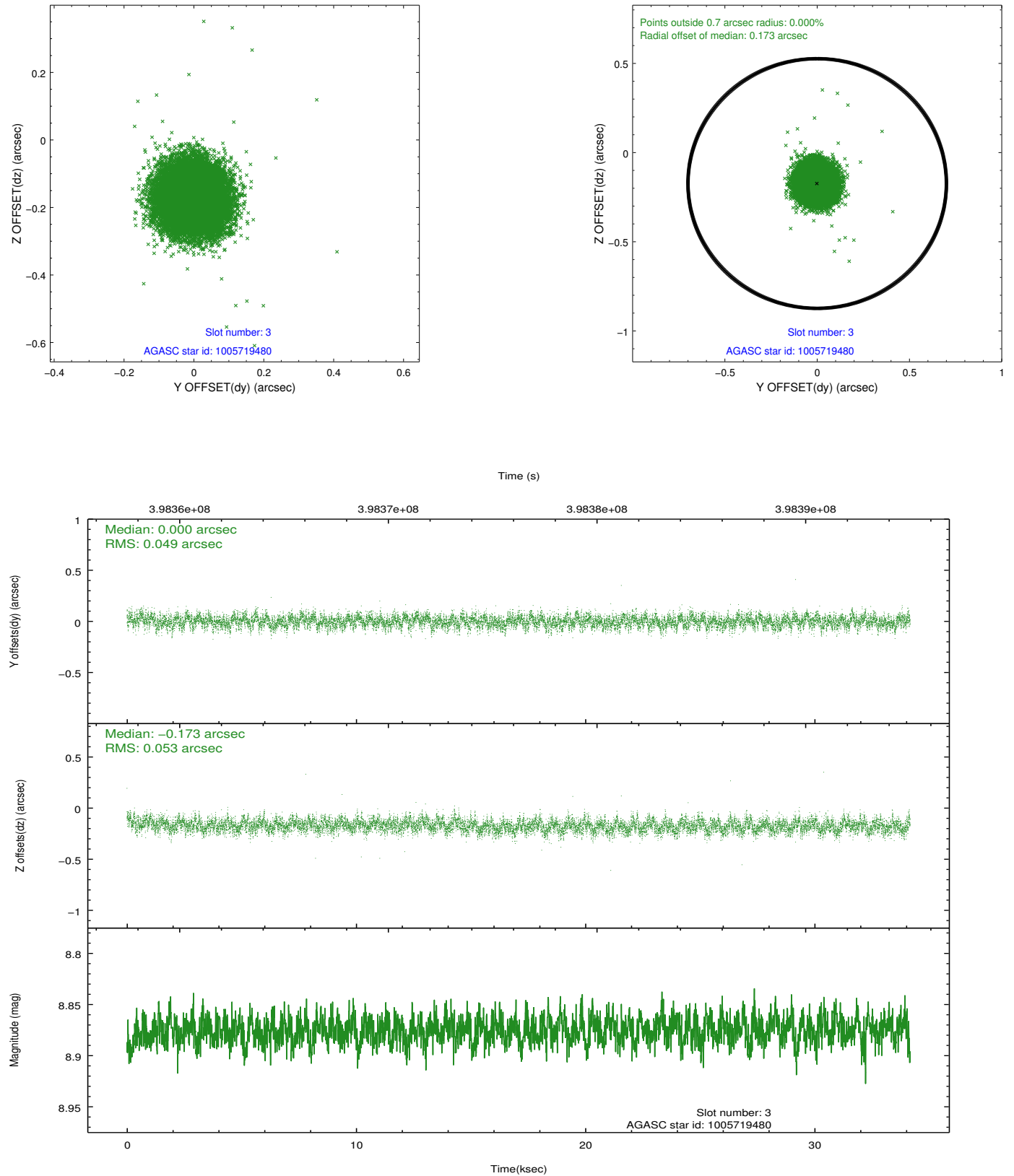


Slot Statistics

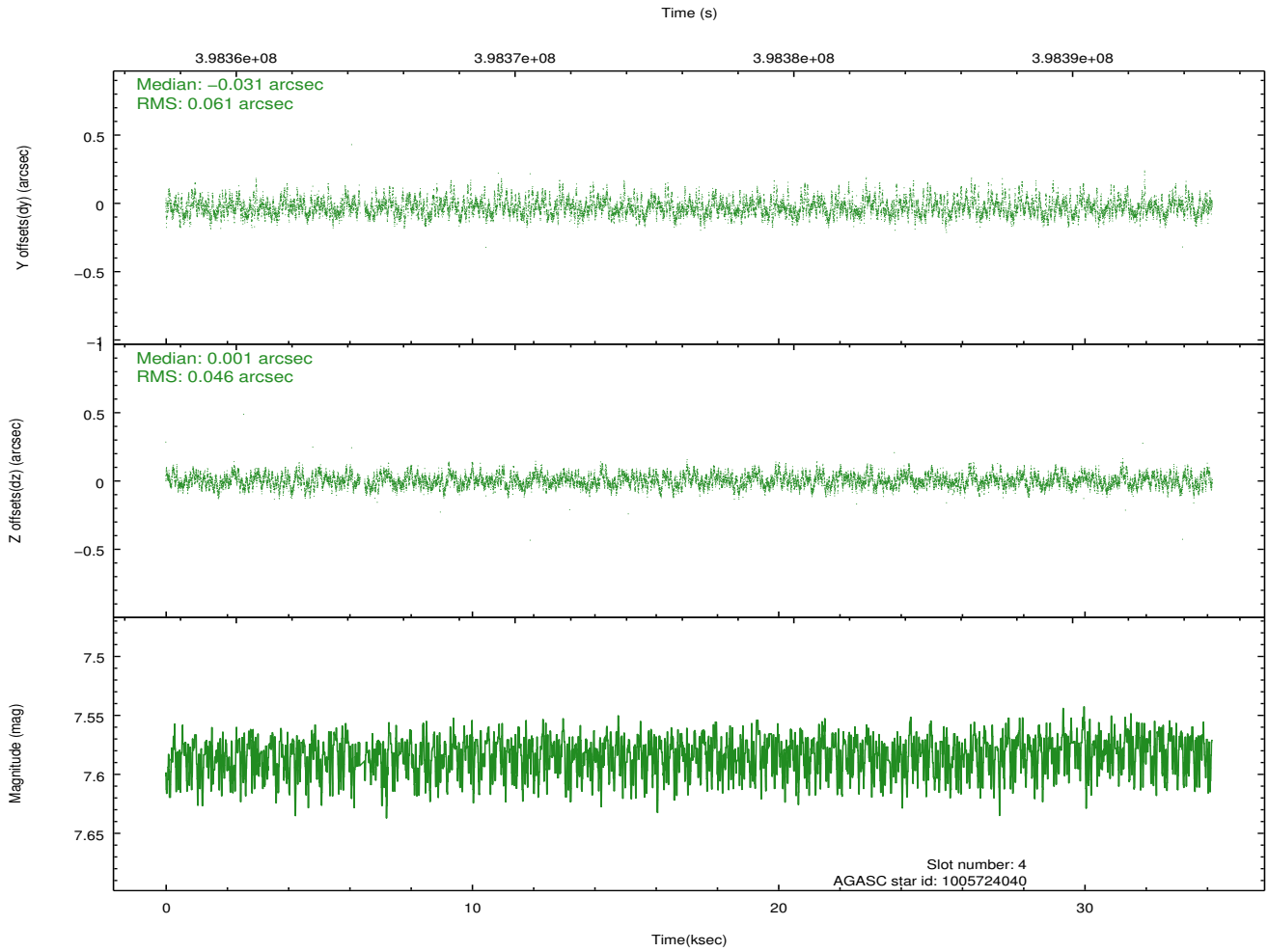
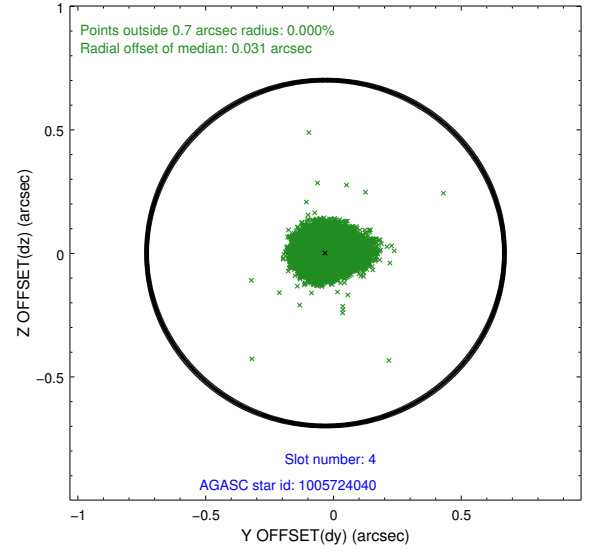
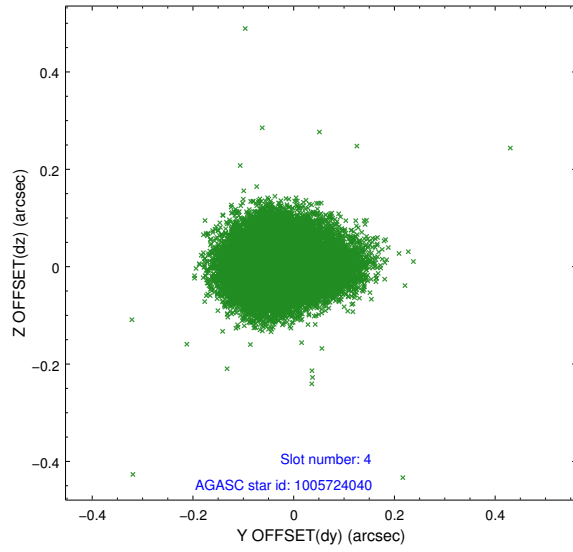
slot	status	id	mag	n_pts	med_dy	med_dz	dr1	dr2	ra	dec	mean_y	mean_z
0	FID	ACIS-S-2	6.88	8333	0.002	-0.026	0.010	0.020	0.000000	0.000000	-769.37	-1739.32
1	FID	ACIS-S-5	7.00	8333	-0.065	0.017	0.016	0.055	0.000000	0.000000	-1822.54	162.67
2	FID	ACIS-S-6	7.11	8333	0.036	0.020	0.019	0.058	0.000000	0.000000	392.28	806.58
3	GUIDE	1005719480	8.88	16653	0.000	-0.173	0.077	0.123	125.476619	-43.605627	-640.61	2084.54
4	GUIDE	1005724040	7.58	16590	-0.031	0.001	0.081	0.130	125.738175	-43.227880	-820.08	573.27
5	GUIDE	1005726872	7.38	16666	-0.171	-0.149	0.065	0.100	125.535449	-43.662820	-855.13	2225.54
6	GUIDE	1005192328	8.96	16662	0.126	0.308	0.085	0.138	126.494374	-42.919317	-2321.49	-1139.44
7	GUIDE	1005723560	8.46	16659	0.070	0.008	0.086	0.135	126.279097	-43.364629	-2320.42	560.06

2.4 Star Slots

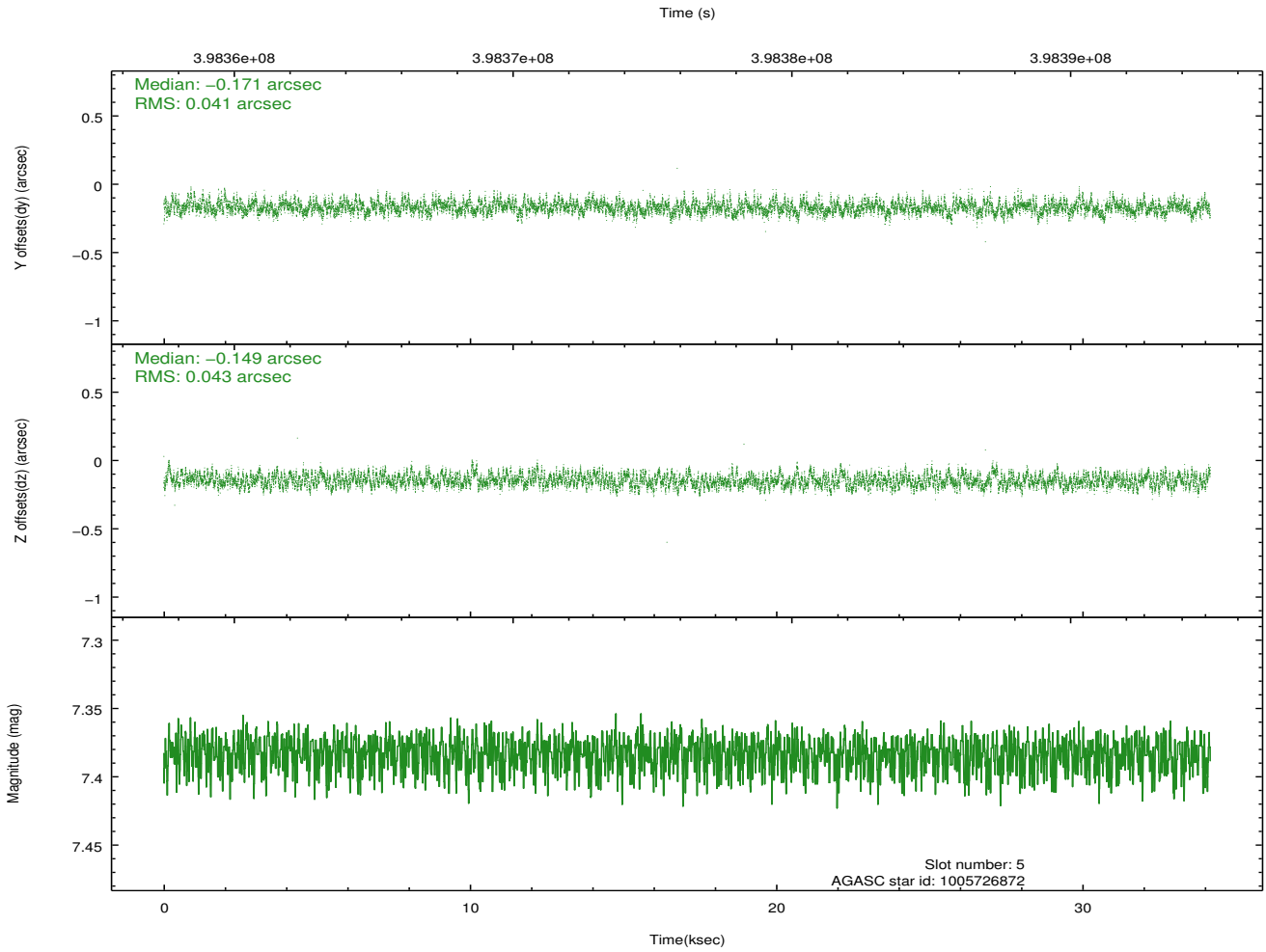
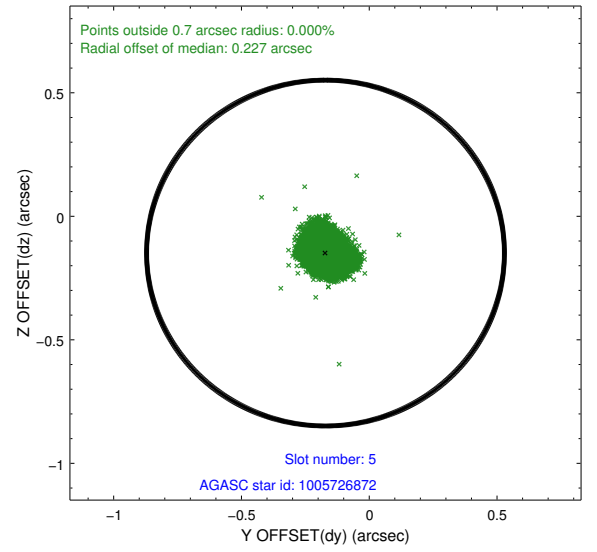
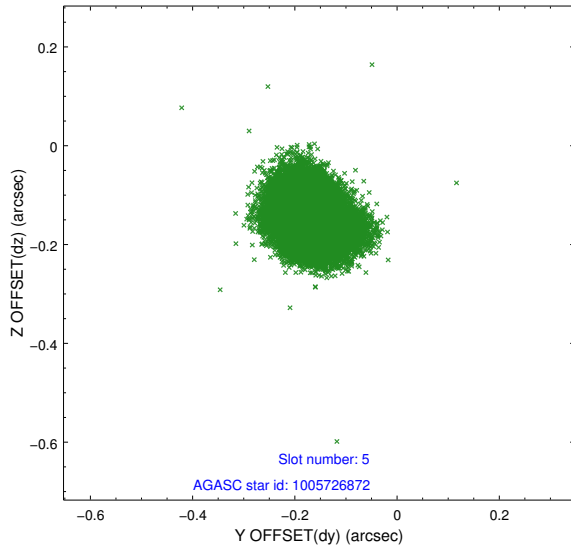
2.4.1 Slot 3



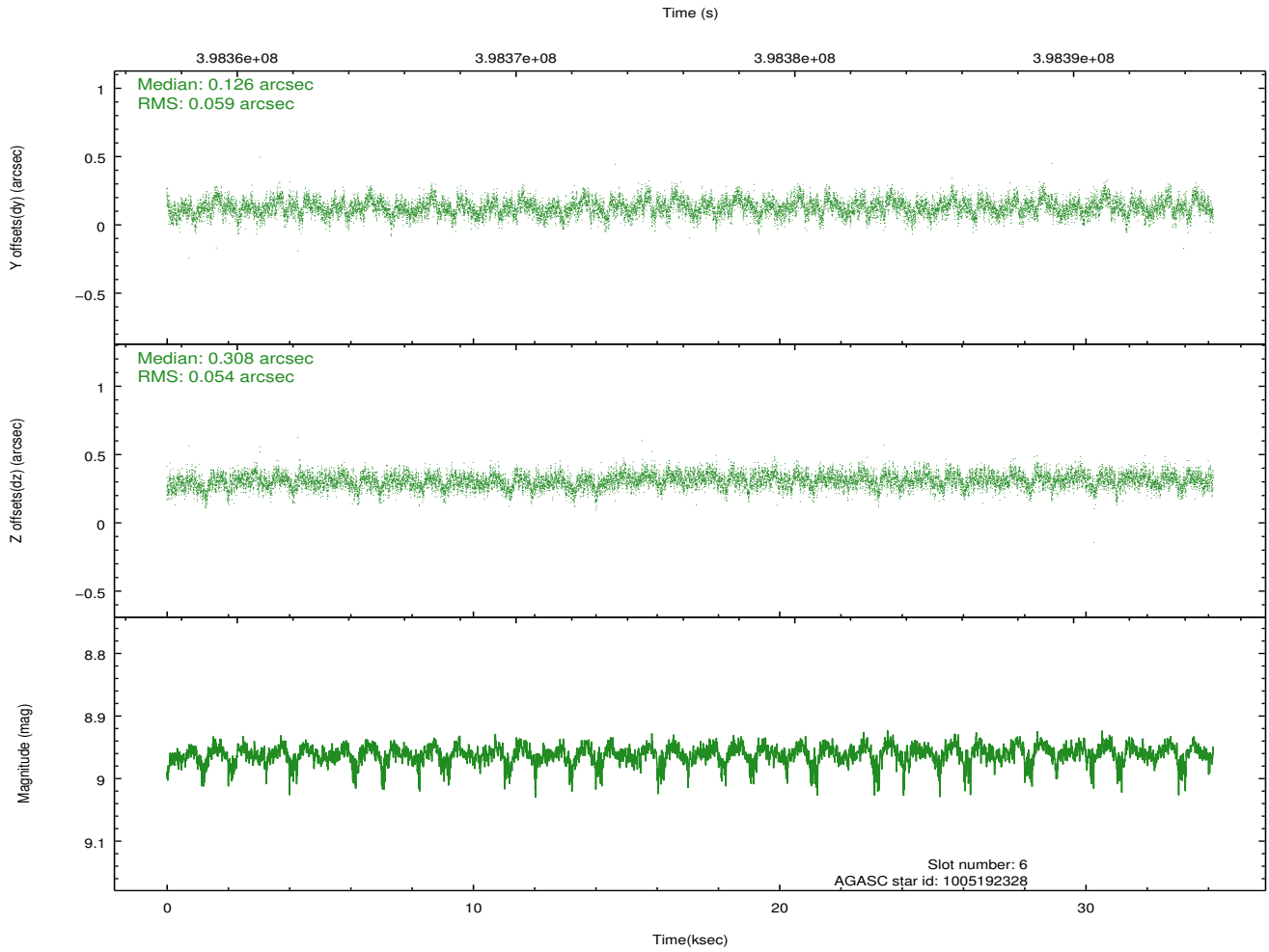
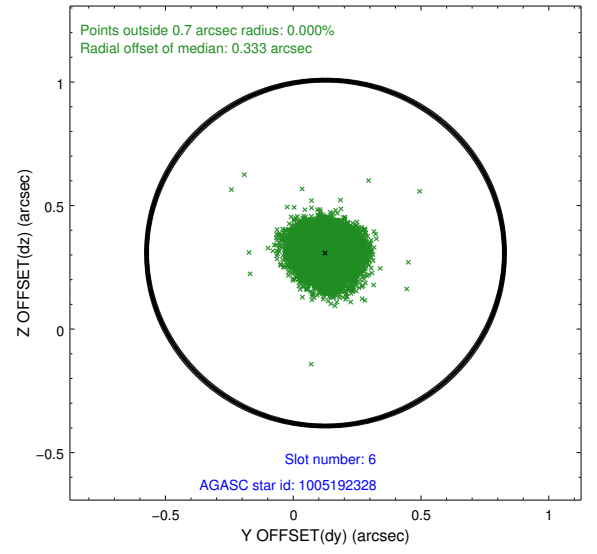
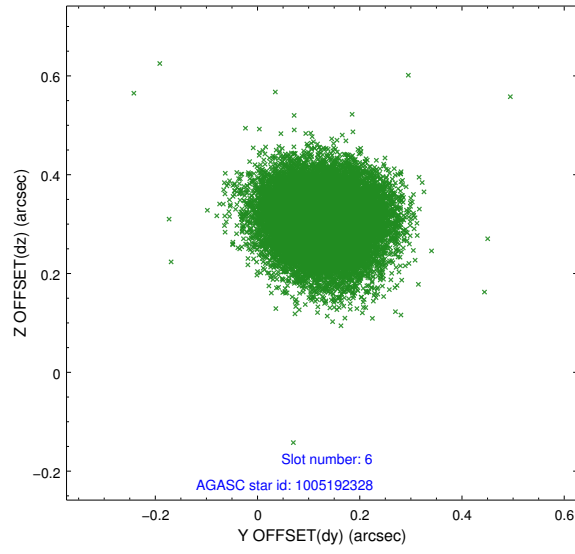
2.4.2 Slot 4



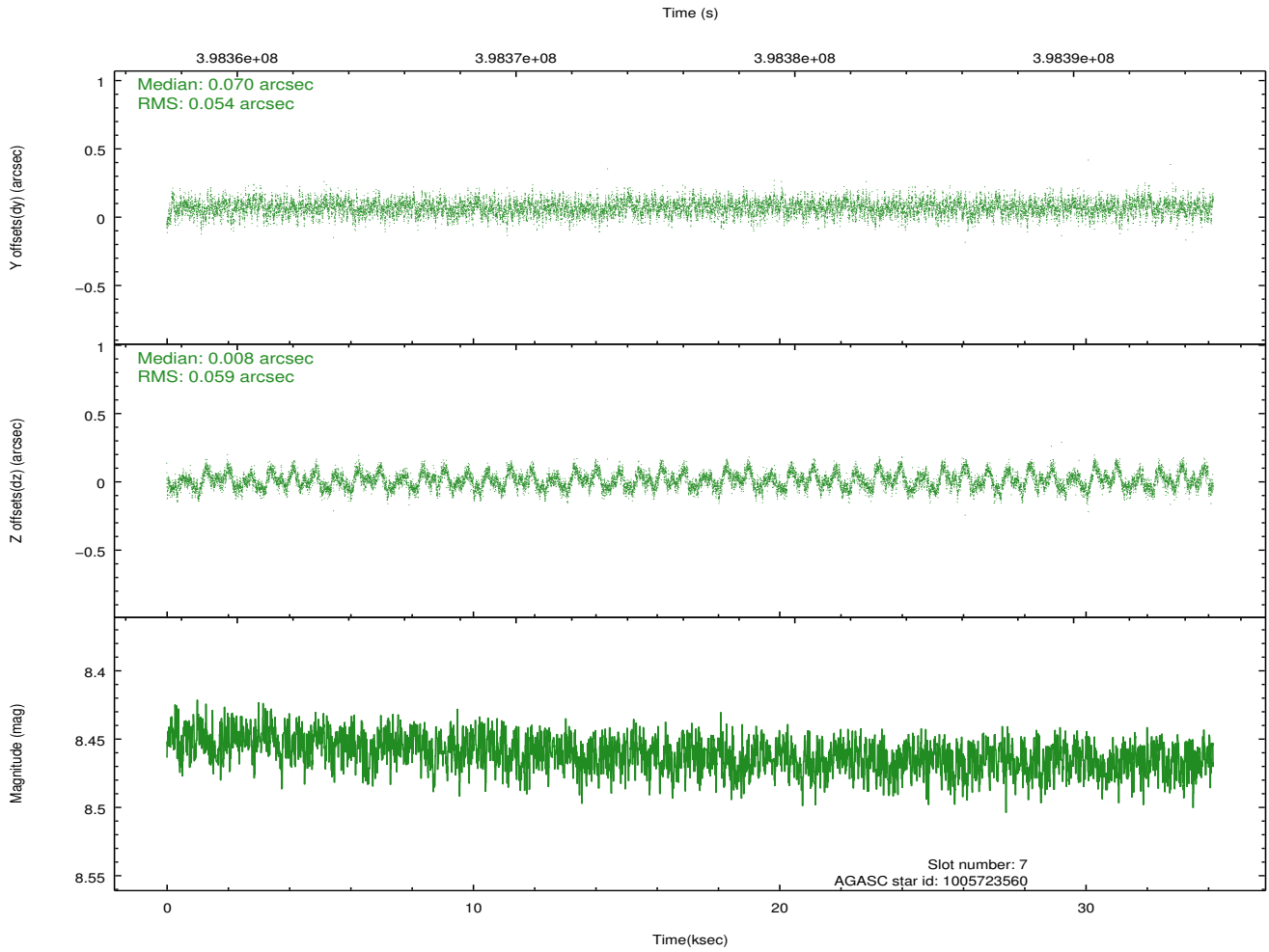
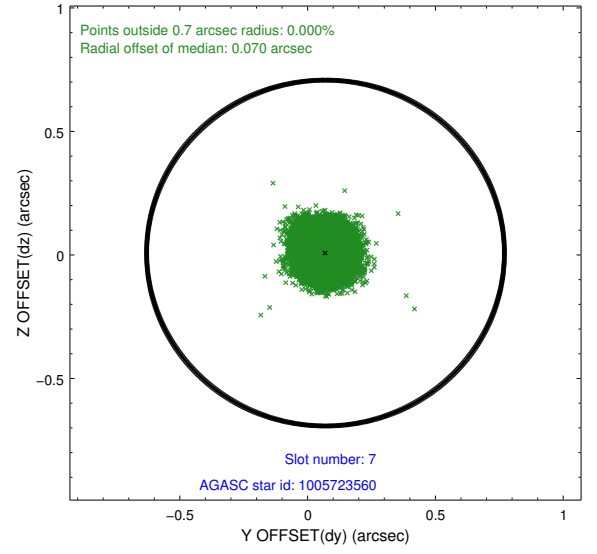
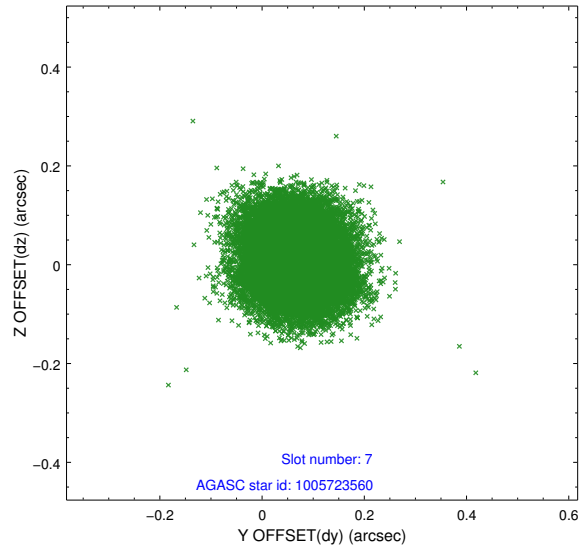
2.4.3 Slot 5



2.4.4 Slot 6

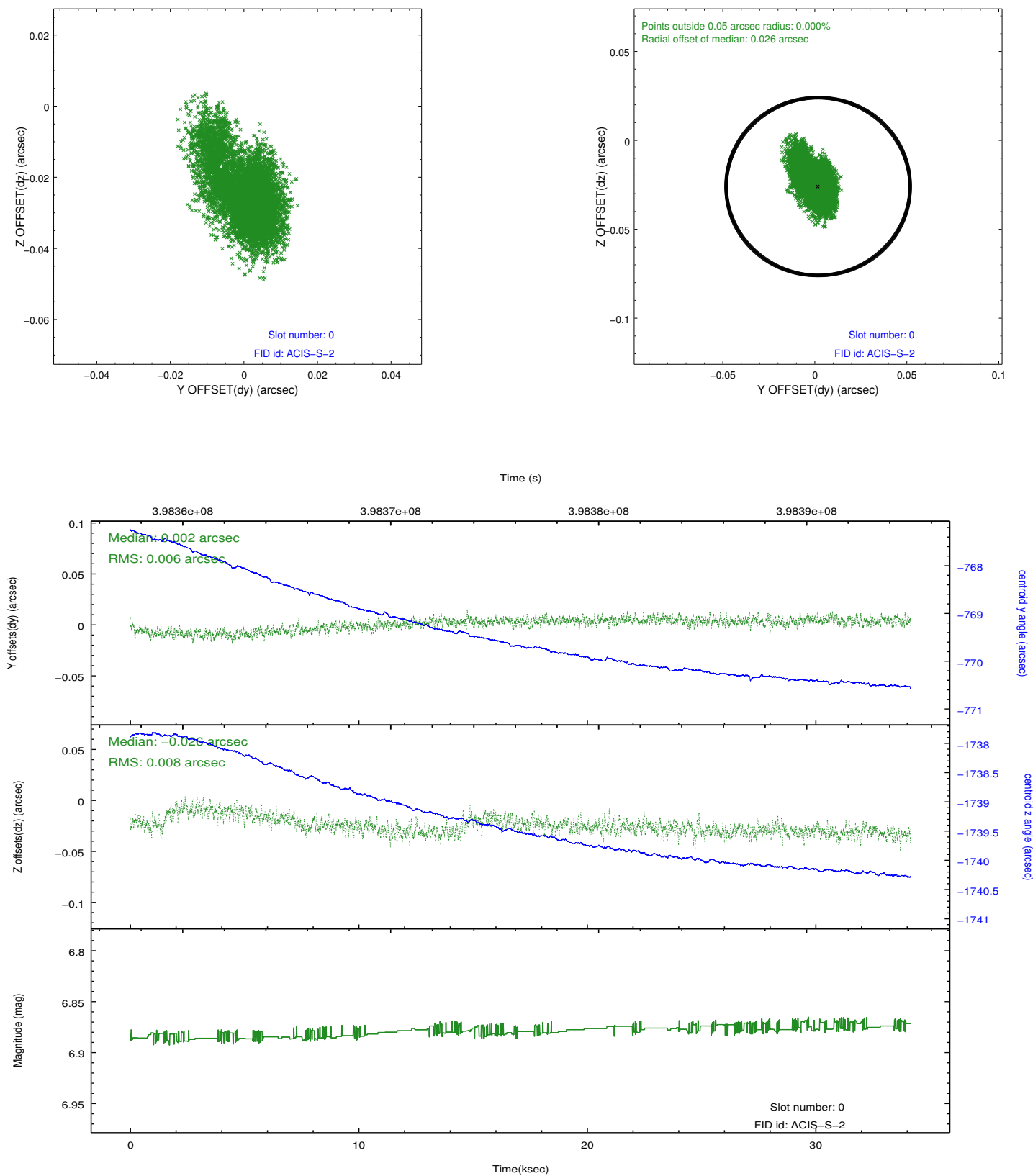


2.4.5 Slot 7

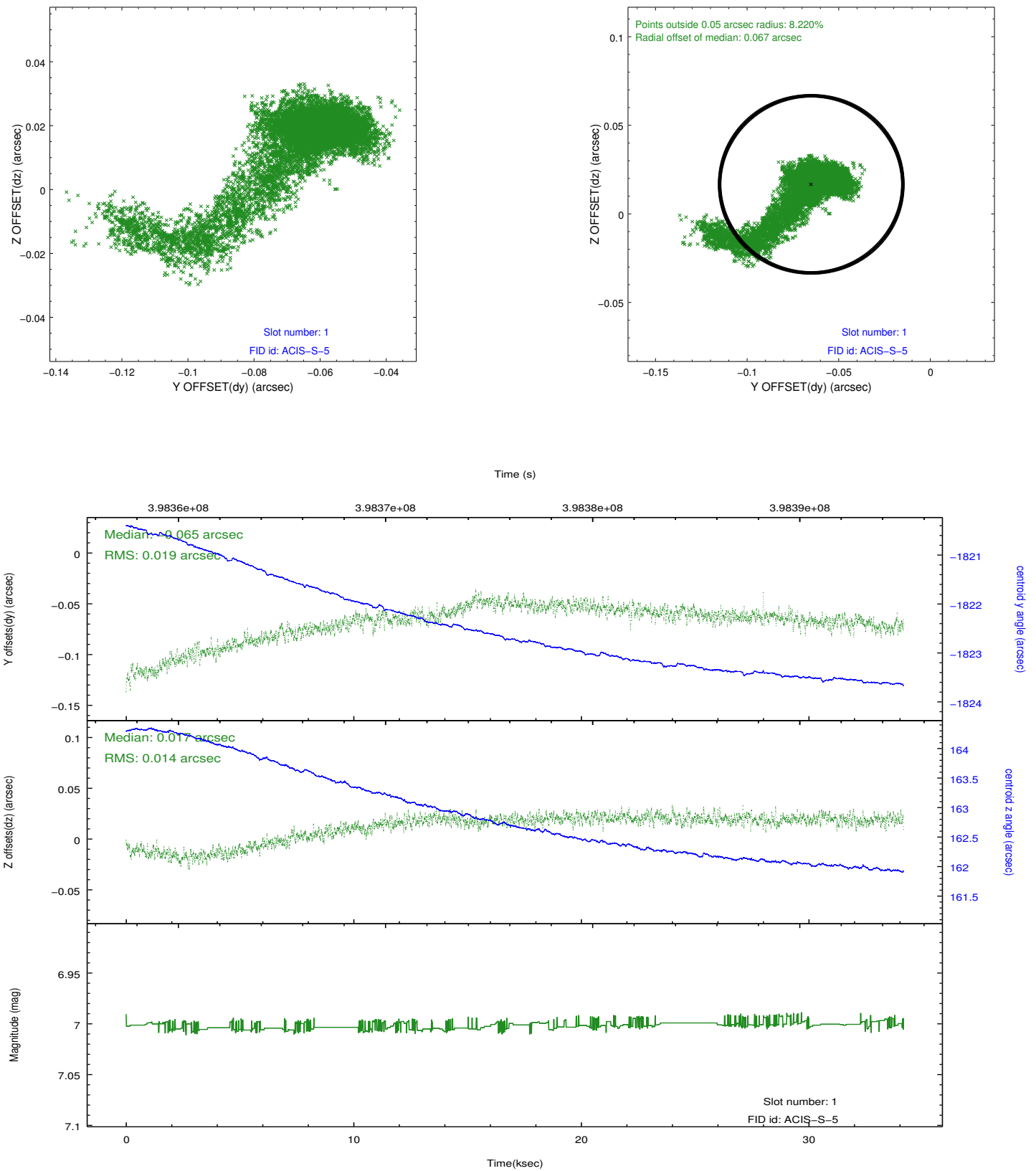


2.5 FID Slots

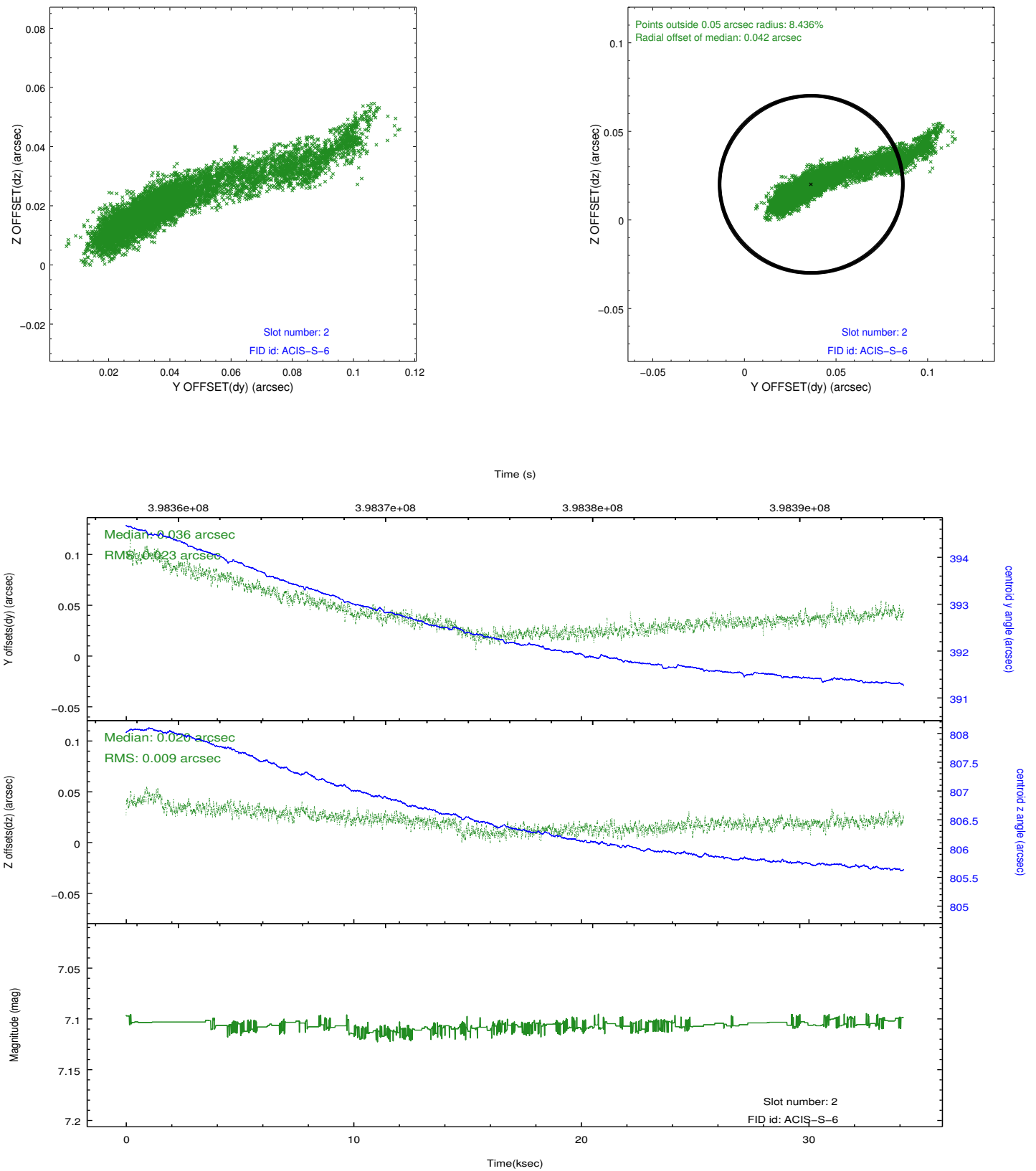
2.5.1 Slot 0



2.5.2 Slot 1



2.5.3 Slot 2



A Summary

A.1 Status

V&V Scientist	Joy Nichols
V&V Date (YYYY-MM-DD)	2012.07.03
V&V Edition	1
V&V Disposition and Status	OK
V&V Charge Time	34.16325

A.2 Comments