

V&V Reference Report

L2 ASCDS Version : 8.4.3

Observation 12521 - L2 Version 3
Chandra X-Ray Center

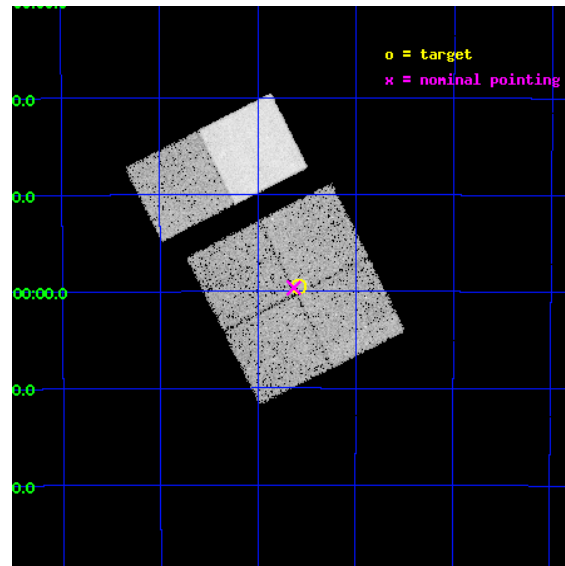
L2 Processing Date : Feb 12 2012

Contents

1	Front	2
2	OBI	3
2.1	OBI	3
2.1.1	Images	3
2.1.2	Bias	3
2.1.3	Parameters	4
2.1.4	Events	4
2.2	Compared Parameters	5
2.3	Aspect	6
2.4	Star Slots	9
2.4.1	Slot 3	9
2.4.2	Slot 4	10
2.4.3	Slot 5	11
2.4.4	Slot 6	12
2.4.5	Slot 7	13
2.5	FID Slots	14
2.5.1	Slot 0	14
2.5.2	Slot 1	15
2.5.3	Slot 2	16
A	Summary	17
A.1	Status	17
A.2	Comments	17

1 Front

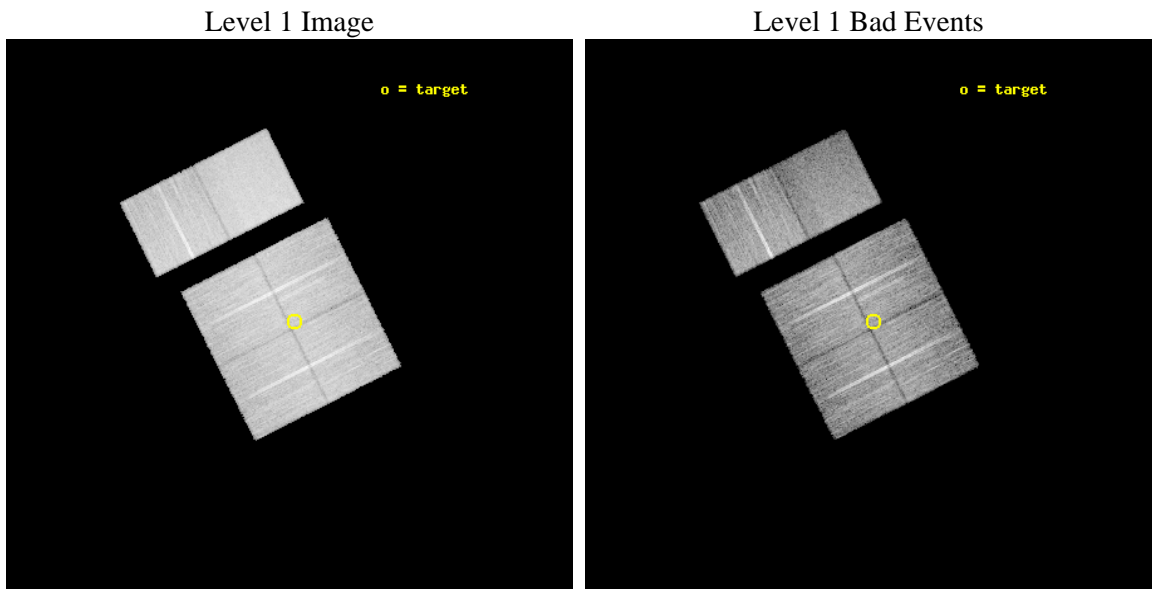
seq_num	401262	Sequence number
obs_id	12521	Observation id
title	Census of the Normal Spiral Arm Region	Proposal title
observer	Dr. John Tomsick	Principal investigator
object	Norma Region	Source name
dtcycle	0	
cycle	P	events from which exps? Prim/Second/Both
ra_targ	249.146283	Observer's specified target RA [deg]
dec_targ	-46.992702	Observer's specified target Dec [deg]
ra_nom	249.15793224186	Nominal RA [deg]
dec_nom	-46.994021836287	Nominal Dec [deg]
roll_nom	333.21720561522	Nominal Roll [deg]
revision	3	Processing version of data
ontime	19254.358878076	Sum of GTIs [s]
livetime	19010.548592379	Livetime [s]
ontime0	19257.599928319	Sum of GTIs [s]
ontime1	19244.635706782	Sum of GTIs [s]
ontime2	19254.358867943	Sum of GTIs [s]
ontime3	19254.358878076	Sum of GTIs [s]
ontime6	19257.599928319	Sum of GTIs [s]
ontime7	19257.599928319	Sum of GTIs [s]
l2events	135258	Number of level 2 events



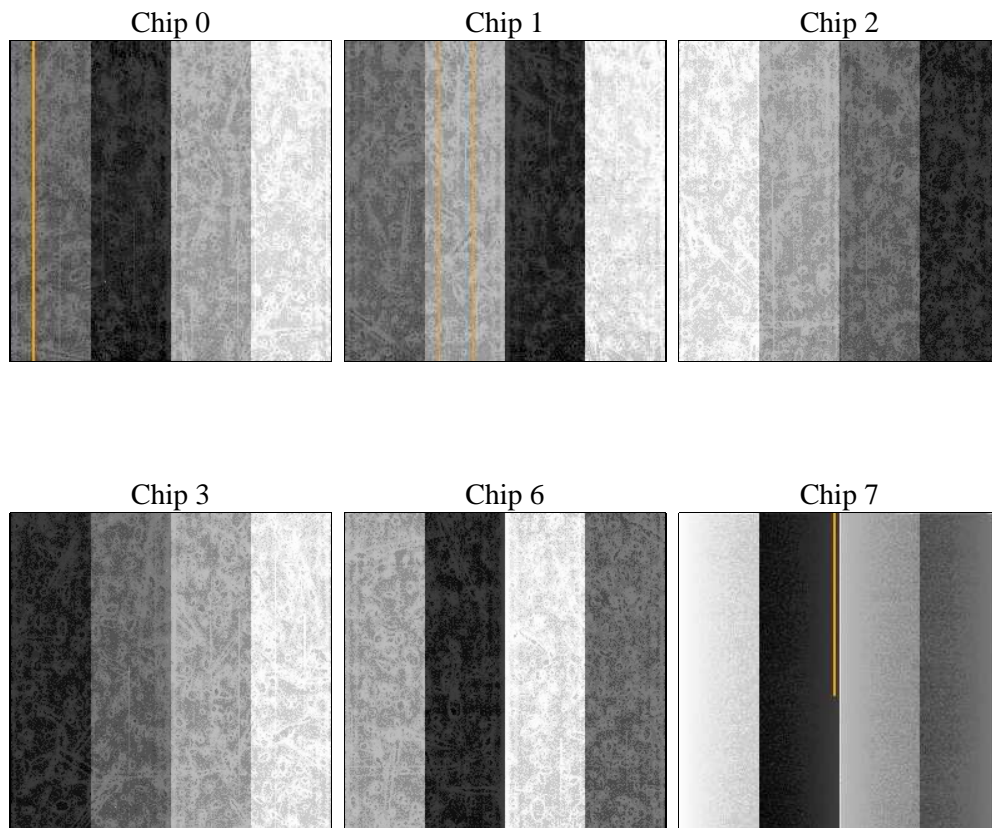
2 OBI

2.1 OBI

2.1.1 Images



2.1.2 Bias



2.1.3 Parameters

obi_num	0	Obi number	sched_exp_time	19500.000000	[s] Scheduled observation exposure time
ascdsver	8.4.3	Processing system revision	ontime	19254.358878076	Sum of GTIs [s]
caldsver	4.4.7	 	ontime0	19257.599928319	Sum of GTIs [s]
date	2012-02-12T11:10:24	Date and time of file creation	ontime1	19244.635706782	Sum of GTIs [s]
revision	3	Processing version of data	ontime2	19254.358867943	Sum of GTIs [s]
			ontime3	19254.358878076	Sum of GTIs [s]
			ontime6	19257.599928319	Sum of GTIs [s]
			ontime7	19257.599928319	Sum of GTIs [s]
			l1events	759308	Number of level 1 events

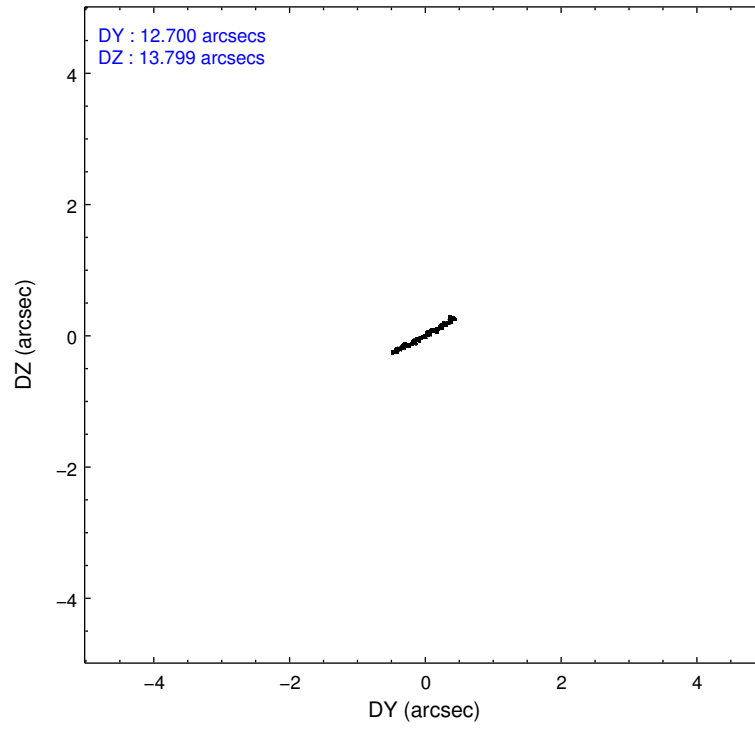
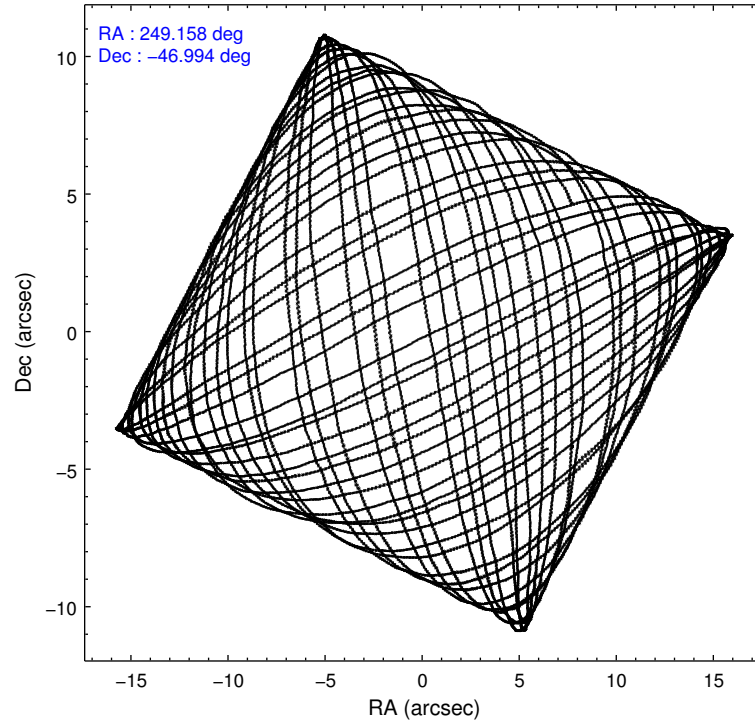
2.1.4 Events

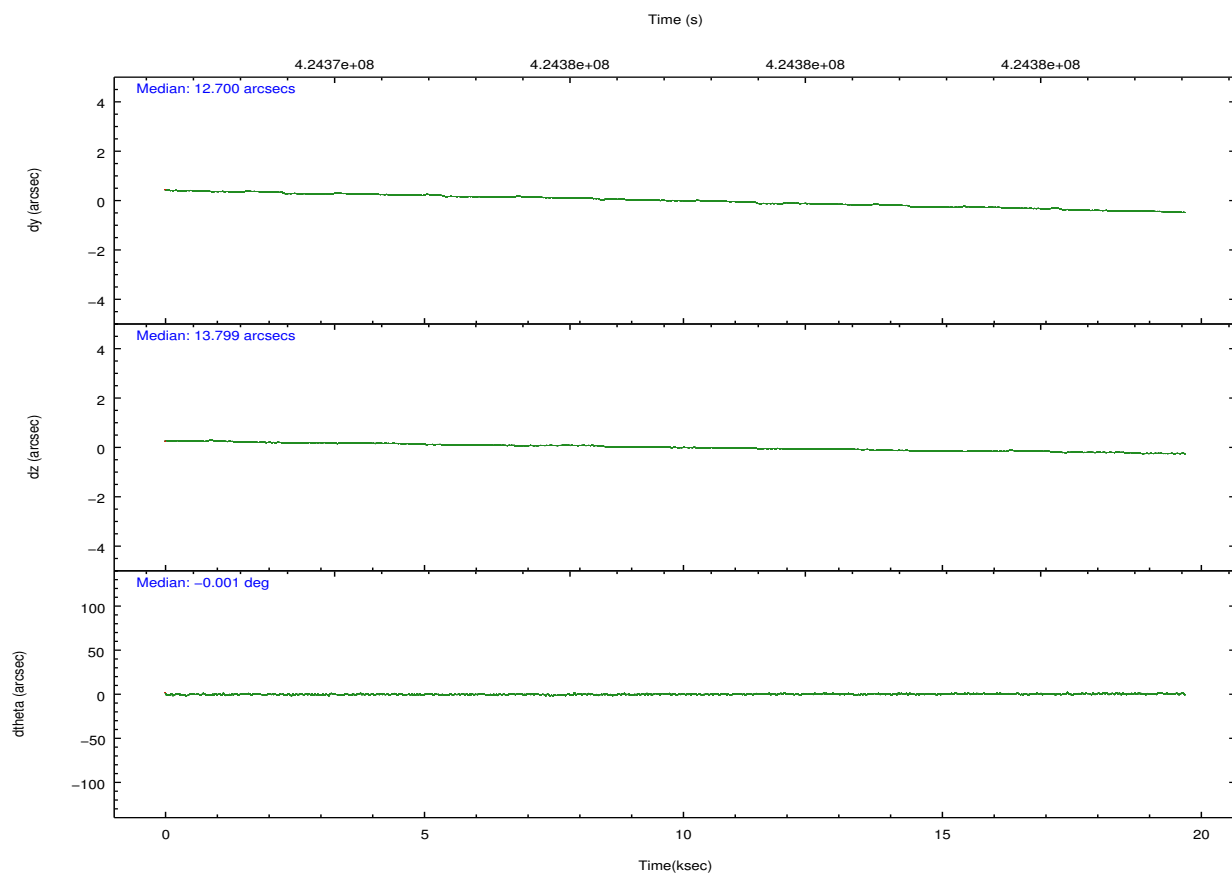
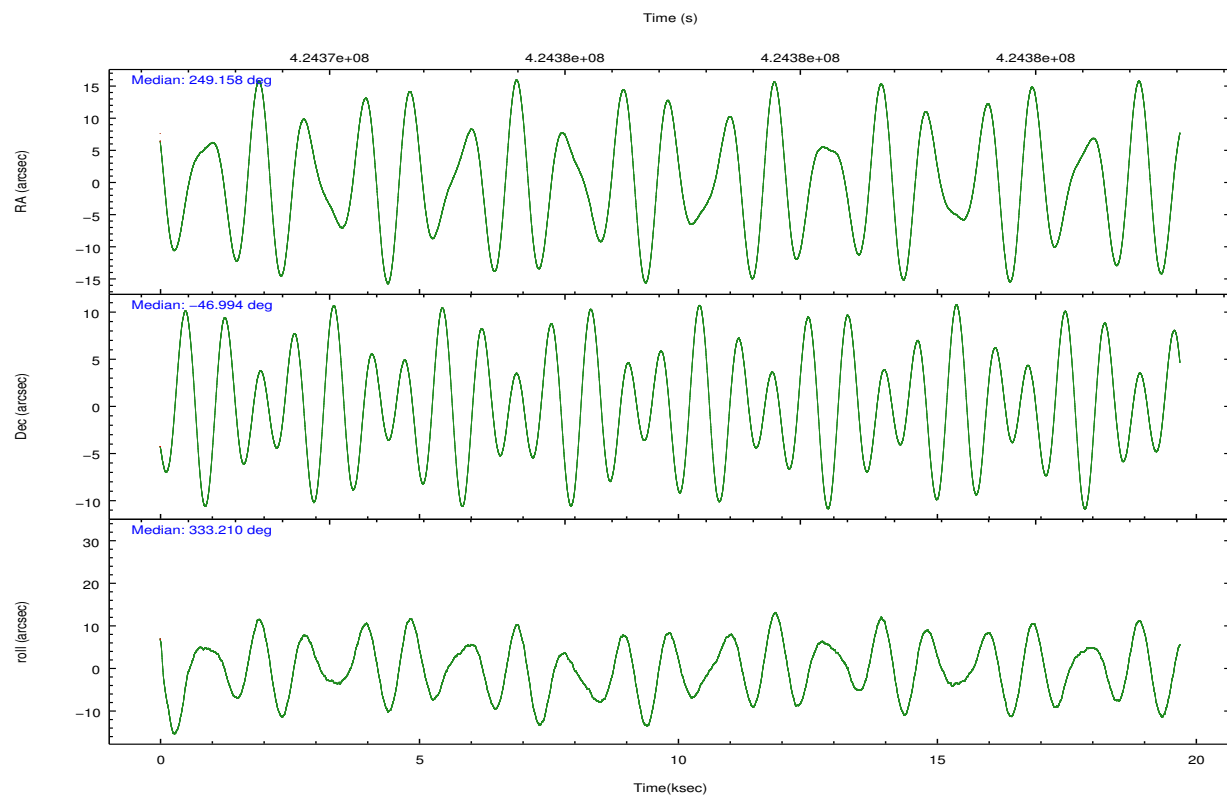
	ccd 0	ccd 1	ccd 2	ccd 3	ccd 6	ccd 7		ccd 0	ccd 1	ccd 2	ccd 3	ccd 6	ccd 7
level 1 events	113798	114724	125300	118571	129147	157768	grade 0 events	5956	6508	5695	5831	6033	6572
rejected events	98414	97990	110782	103892	113136	86573		5%	5%	4%	4%	4%	4%
rejected %	86%	85%	88%	87%	87%	54%	grade 1 events	85	85	77	88	85	187
								0%	0%	0%	0%	0%	0%
							grade 2 events	3565	3663	3308	3002	3452	14673
								3%	3%	2%	2%	2%	9%
							grade 3 events	1578	1647	1471	1465	1553	6050
								1%	1%	1%	1%	1%	3%
							grade 4 events	1361	1561	1403	1474	1528	6207
								1%	1%	1%	1%	1%	3%
							grade 5 events	5125	5482	4841	5764	5869	16173
								4%	4%	3%	4%	4%	10%
							grade 6 events	2934	3363	2646	2911	3447	37706
								2%	2%	2%	2%	2%	23%
							grade 7 events	93194	92415	105859	98036	107180	70200
								81%	80%	84%	82%	82%	44%

2.2 Compared Parameters

Parameter	Planned	Actual	Parameter	Planned	Actual
Instrument	ACIS	ACIS	Obspar format version number	7	7
Detector	ACIS-012367	ACIS-012367	Obspar file type	PREDICTED	ACTUAL
Grating	NONE	NONE	Obspar update status	NONE	UPDATED
Data mode	VFAINT	VFAINT	CCD I0 on	Y	Y
Observation mode	POINTING	POINTING	CCD I1 on	Y	Y
[deg] Pointing RA	249.117724	249.1579322418607	CCD I2 on	Y	Y
[deg] Pointing Dec	-46.995685	-46.99402183628692	CCD I3 on	Y	Y
[deg] Pointing Roll	332.979115	333.2172056152192	CCD S0 on	N	N
[mm] SIM focus pos	-0.782348	-0.7809083437167272	CCD S1 on	N	N
[mm] SIM defocus	0	0.001439871863259334	CCD S2 on	O2	Y
[mm] SIM translation stage pos	-233.592463	-233.5899487761303	CCD S3 on	O1	Y
[mm] SIM translation stage offset	0	-0.002504226799430853	CCD S4 on	N	N
[s] Observation start time (MET)	424367575.184000	424367198.75548	CCD S5 on	N	N
Observation start date	2011-06-13T15:51:49	2011-06-13T15:46:38	Number of optional ACIS chips dropped	0	0
[s] Observation end time (MET)	424387075.184000	424387208.80652	On-chip summing requested	N	N
Observation end date	2011-06-13T21:16:49	2011-06-13T21:20:08	Subarray requested	NONE	NONE
Read mode	TIMED	TIMED	Alternating exposures requested	N	N
			[s] Primary exposure time	0.000000	3.2

2.3 Aspect



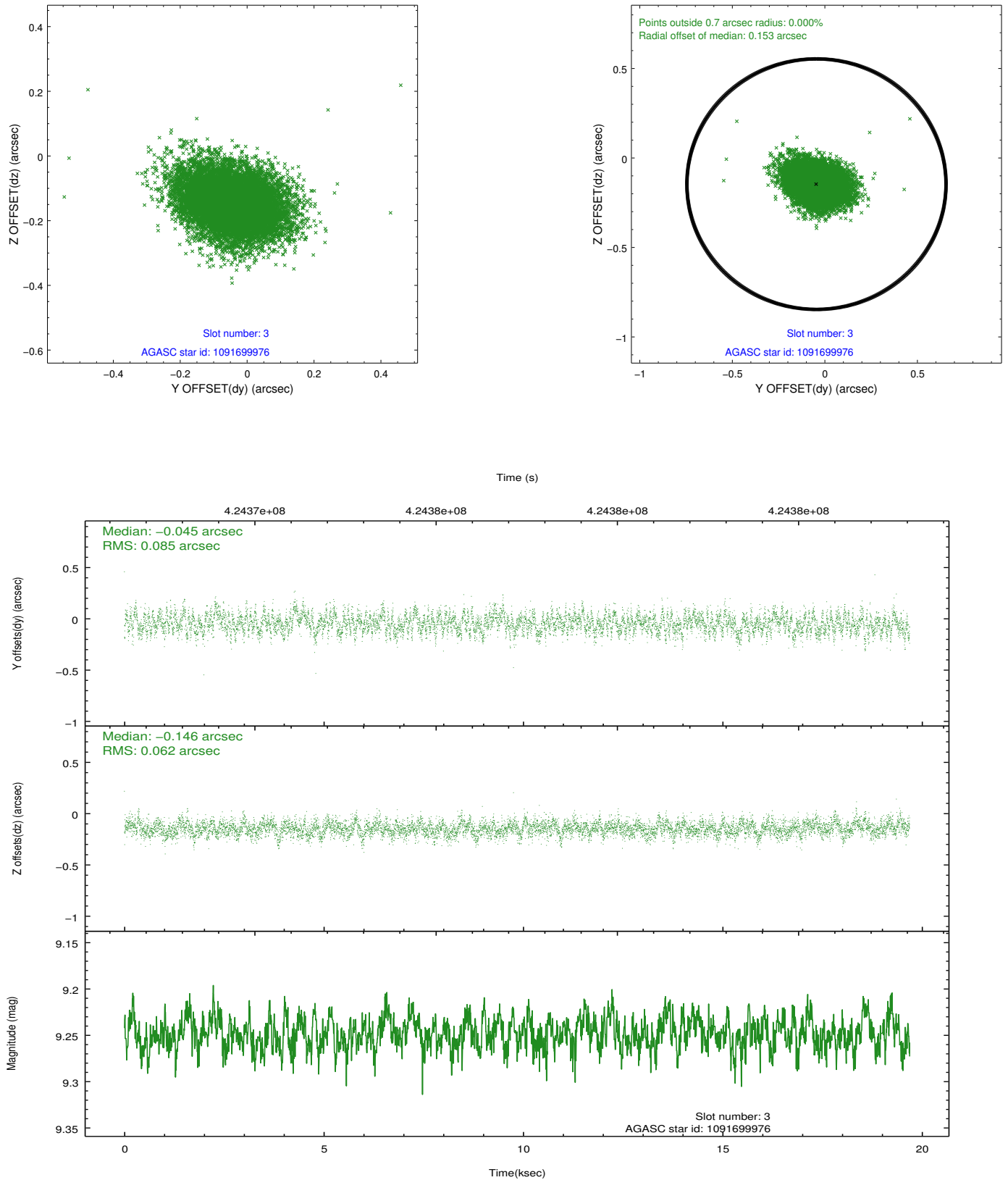


Slot Statistics

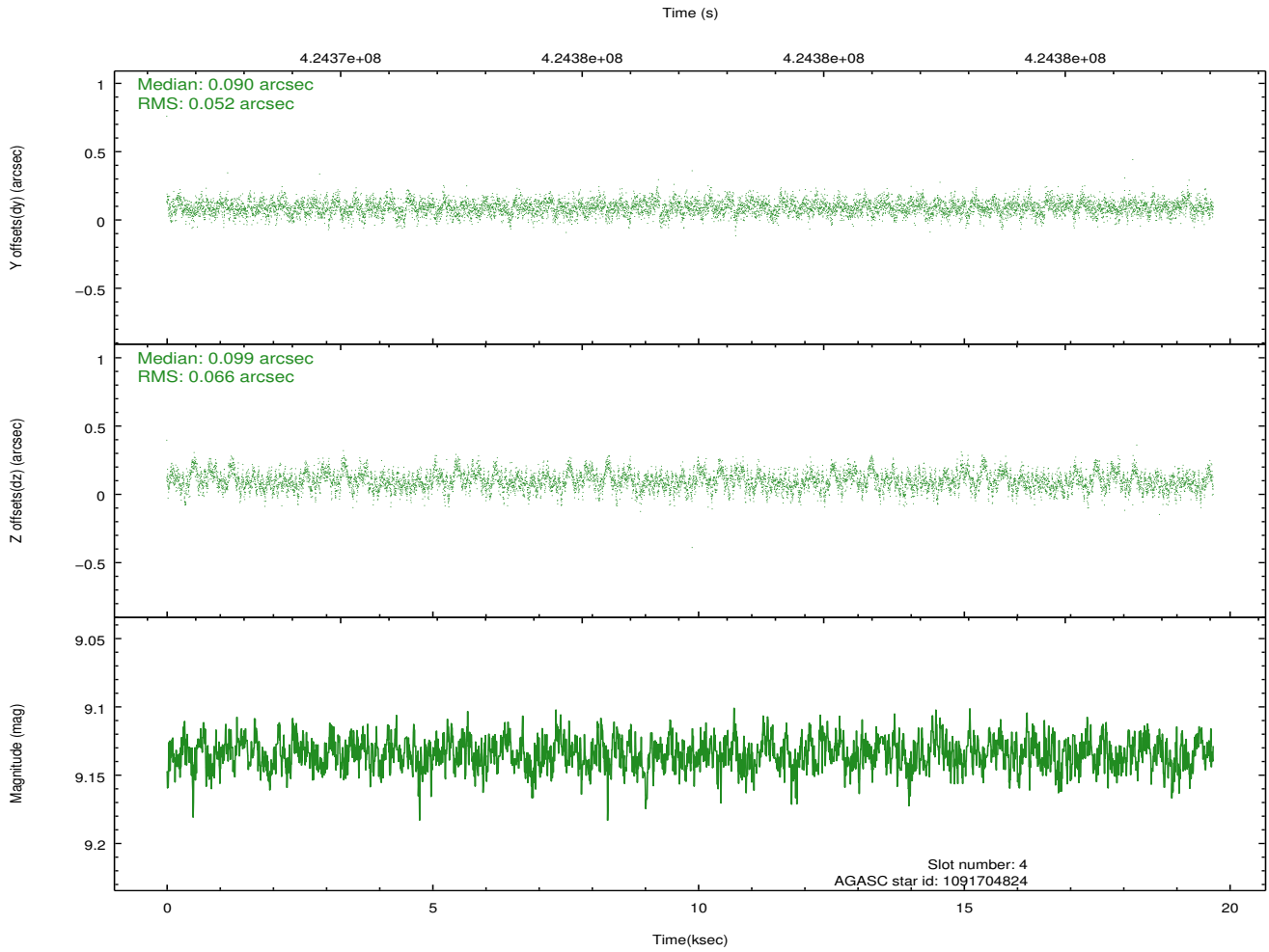
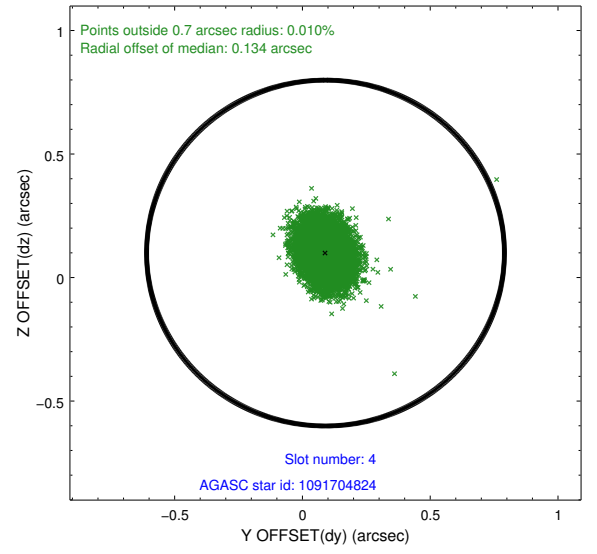
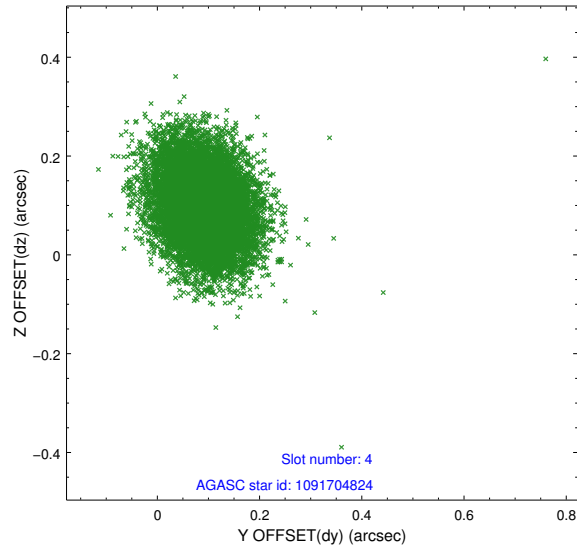
slot	status	id	mag	n_pts	med_dy	med_dz	dr1	dr2	ra	dec	mean_y	mean_z
0	FID	ACIS-I-2	7.02	4802	-0.007	-0.052	0.009	0.018	0.000000	0.000000	-767.36	-843.73
1	FID	ACIS-I-5	7.12	4803	-0.169	0.053	0.012	0.019	0.000000	0.000000	-1821.68	1060.14
2	FID	ACIS-I-6	7.11	4803	0.082	0.068	0.011	0.018	0.000000	0.000000	392.27	1704.86
3	GUIDE	1091699976	9.25	9598	-0.045	-0.146	0.111	0.181	249.617486	-47.776281	2356.36	-1957.40
4	GUIDE	1091704824	9.13	9600	0.090	0.099	0.089	0.146	249.173141	-47.336759	679.29	-1032.42
5	GUIDE	1091709768	7.72	9602	-0.085	0.074	0.067	0.107	249.435228	-47.706899	1850.14	-1932.84
6	GUIDE	1091709800	9.18	9575	0.024	0.073	0.104	0.170	249.801955	-47.310212	2007.13	-257.43
7	GUIDE	1091204664	8.35	9603	0.015	-0.096	0.065	0.109	248.658352	-46.526357	-1779.11	984.99

2.4 Star Slots

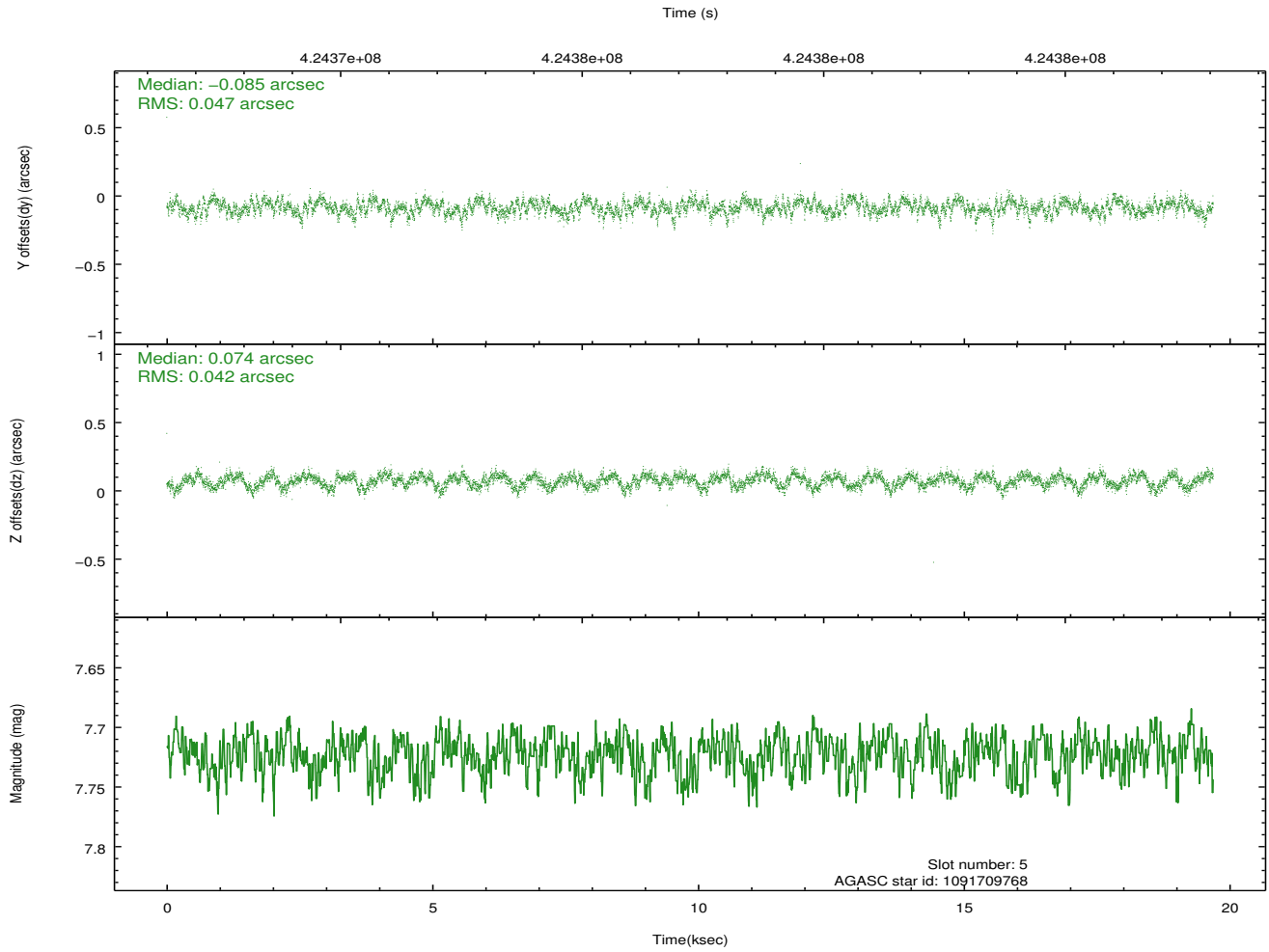
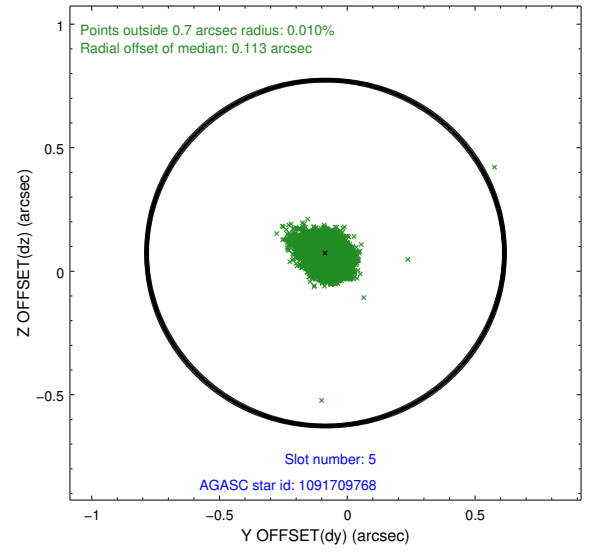
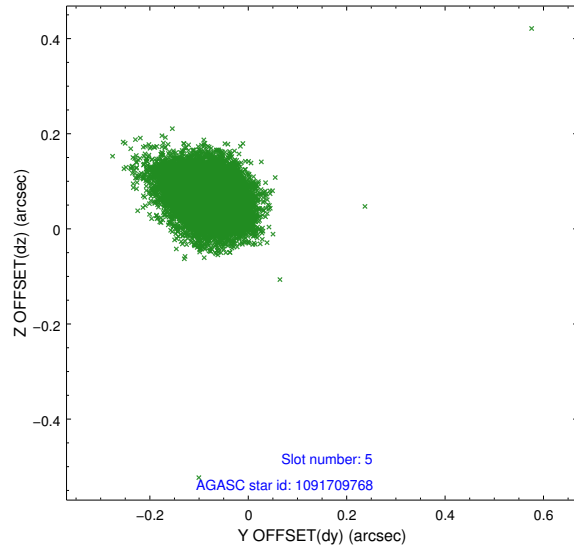
2.4.1 Slot 3



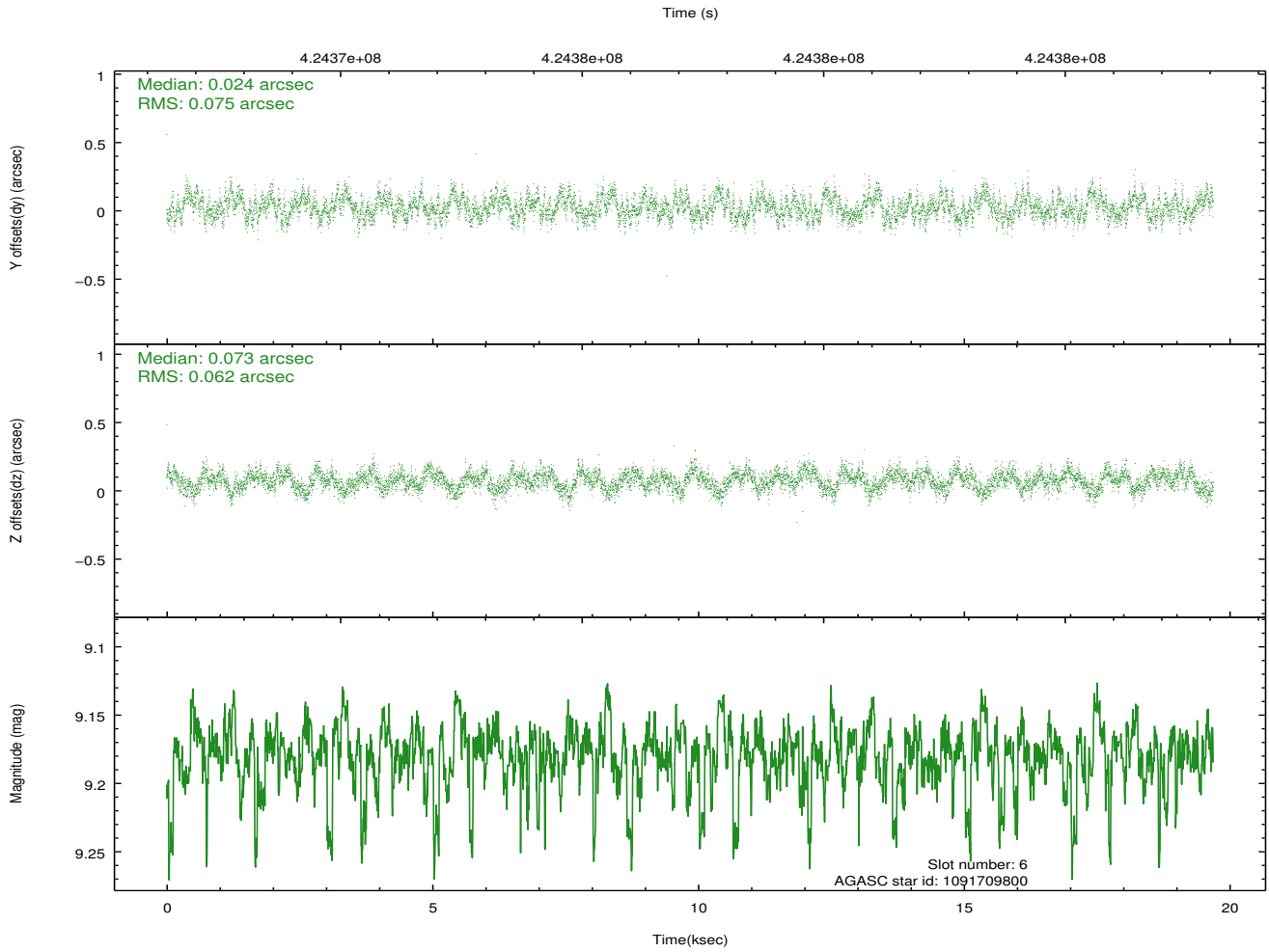
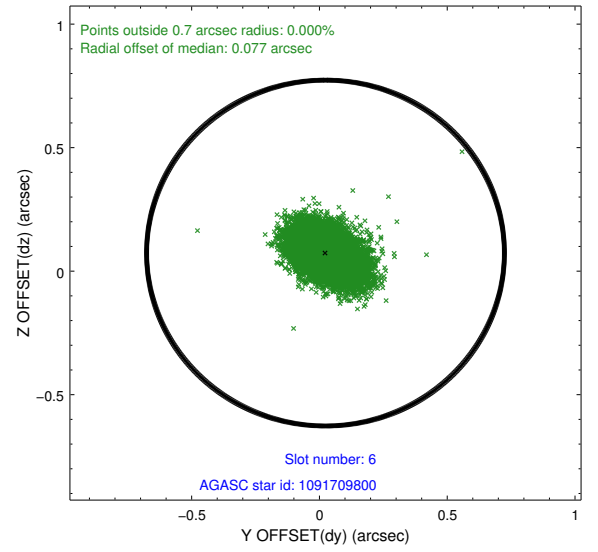
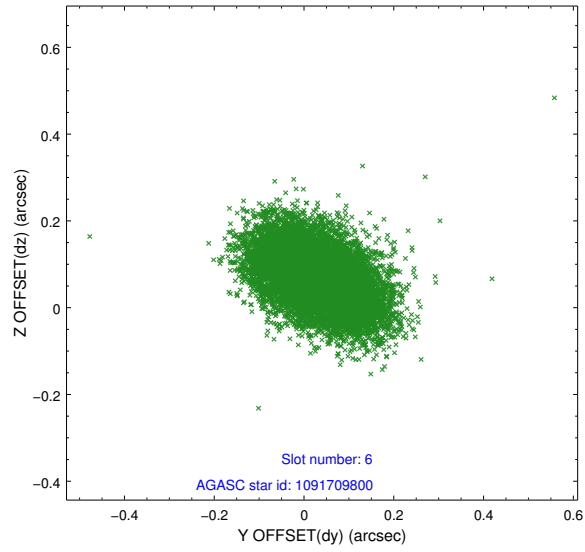
2.4.2 Slot 4



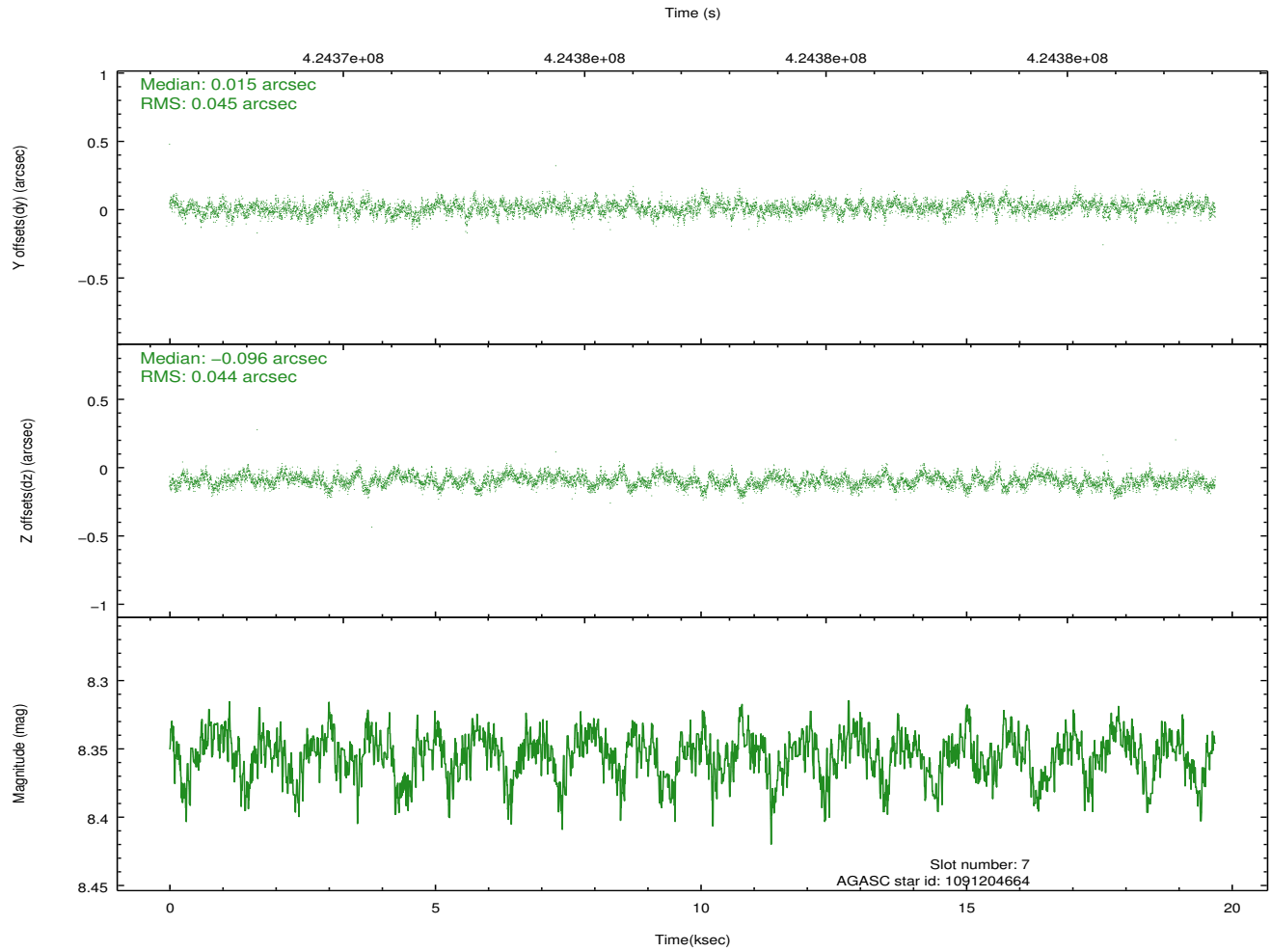
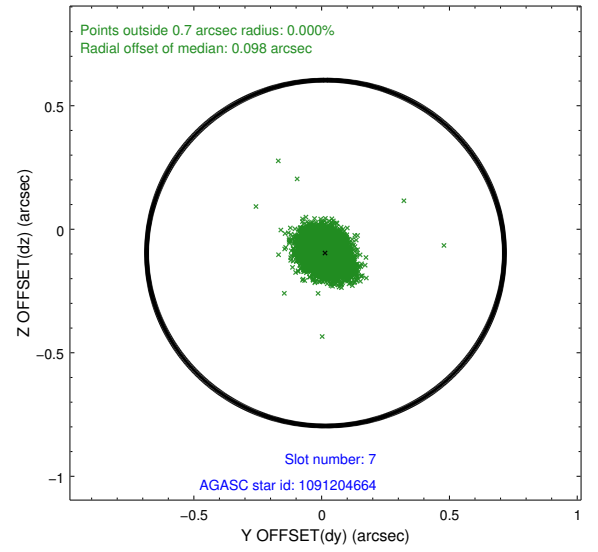
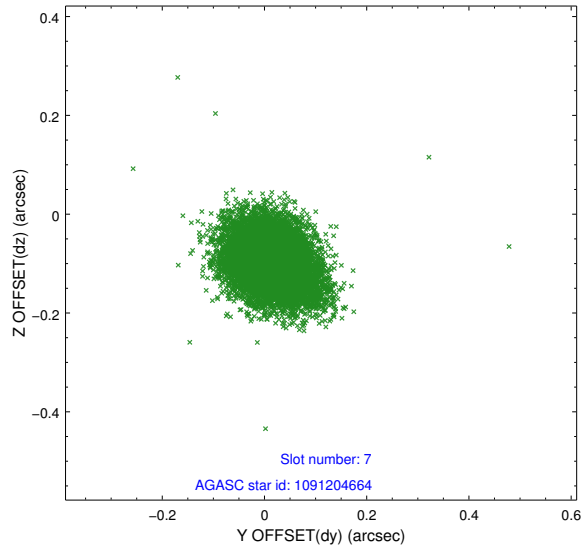
2.4.3 Slot 5



2.4.4 Slot 6

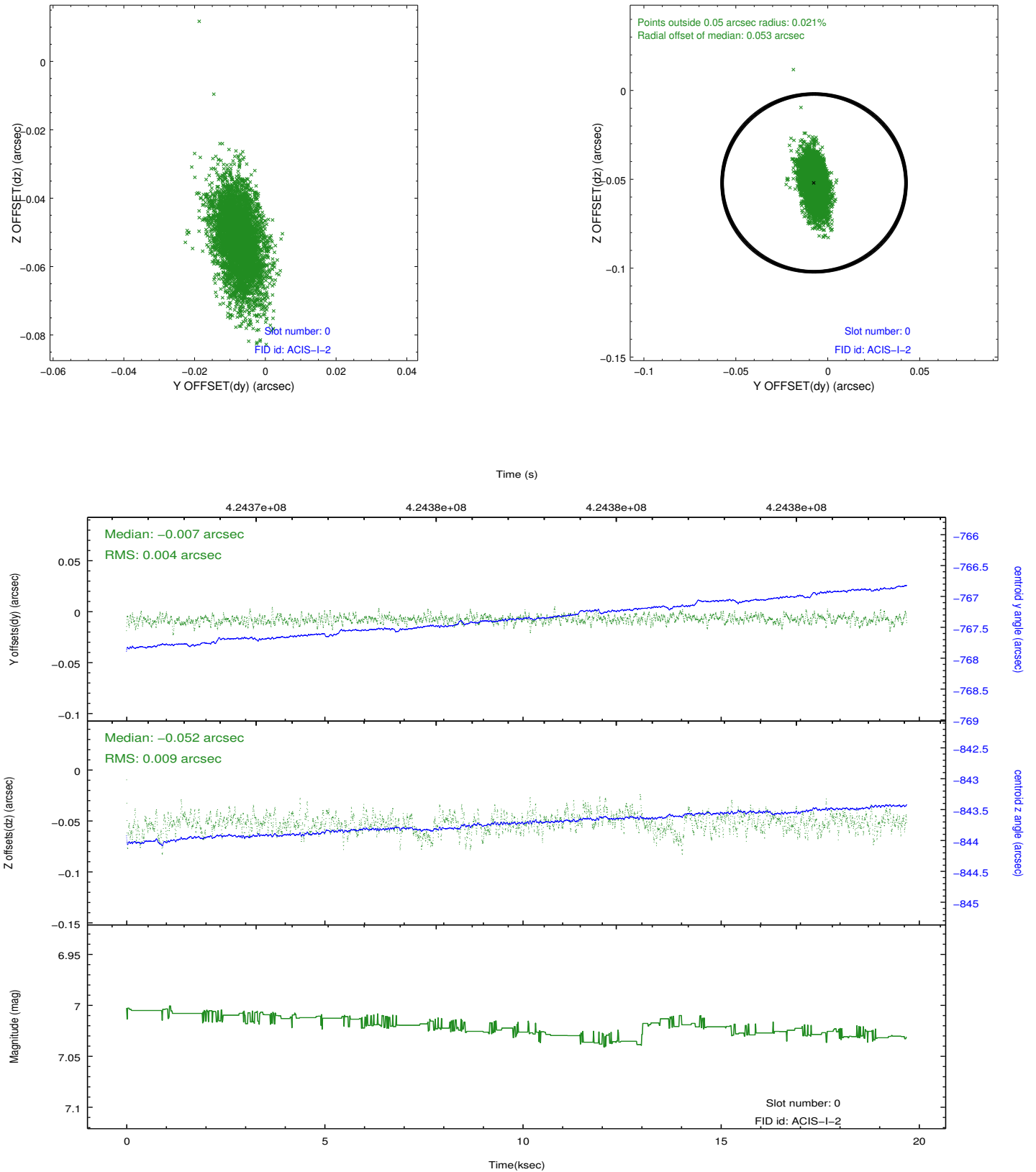


2.4.5 Slot 7

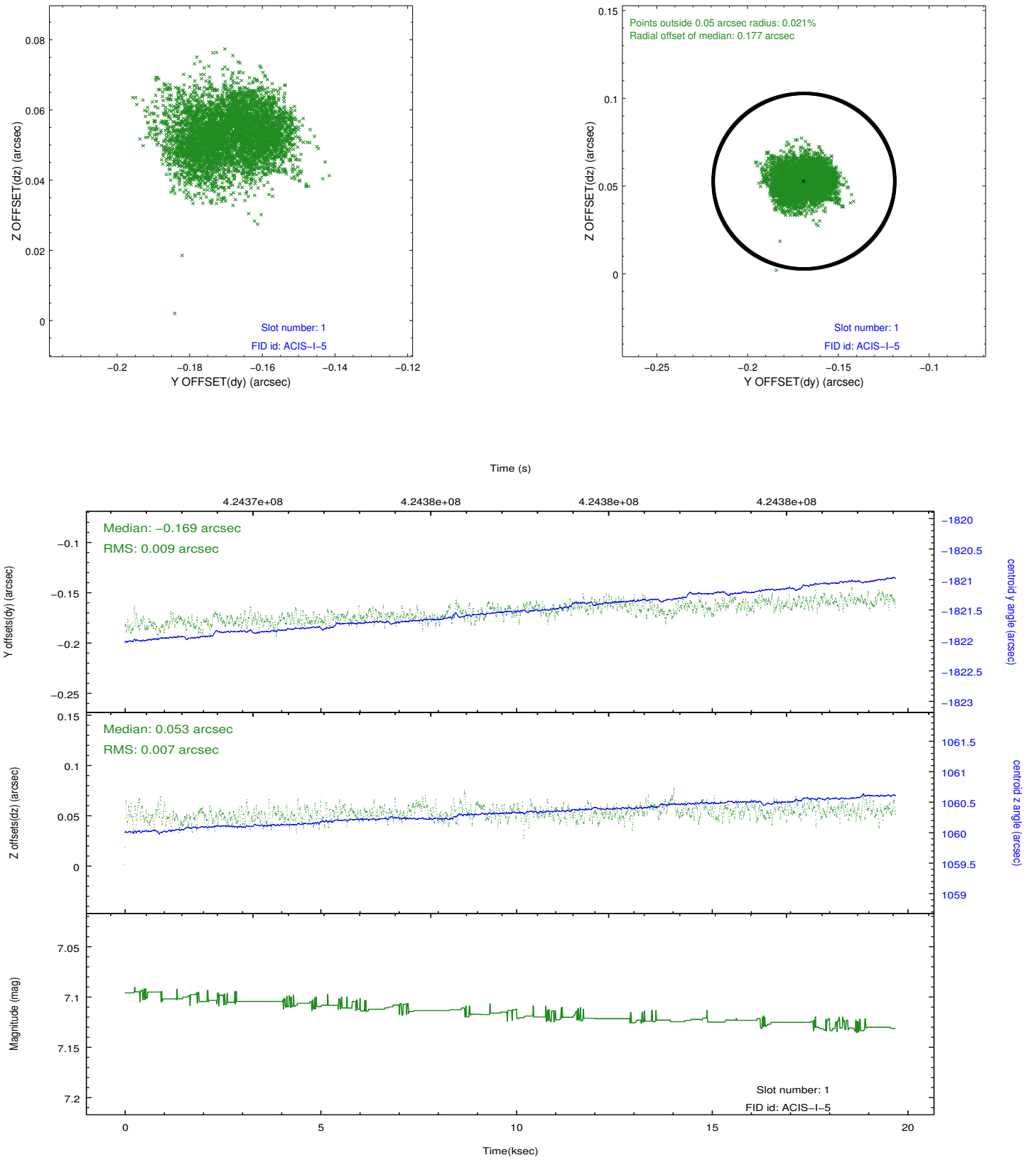


2.5 FID Slots

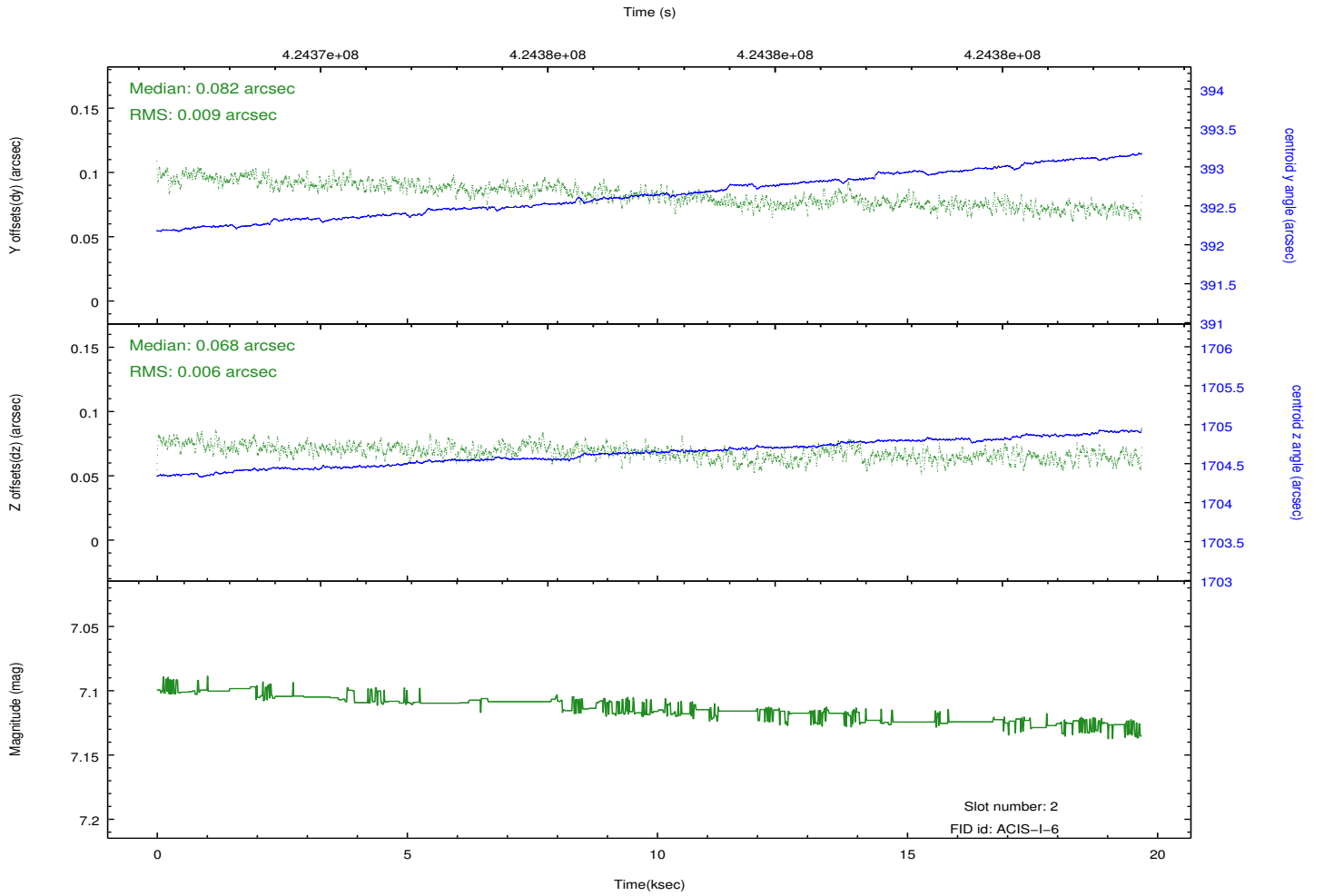
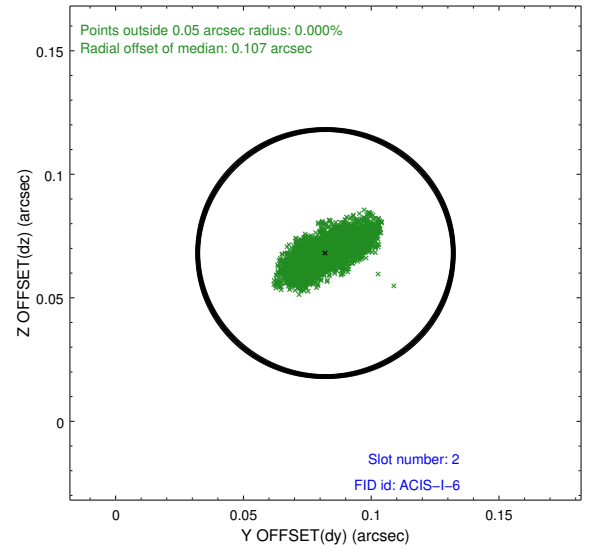
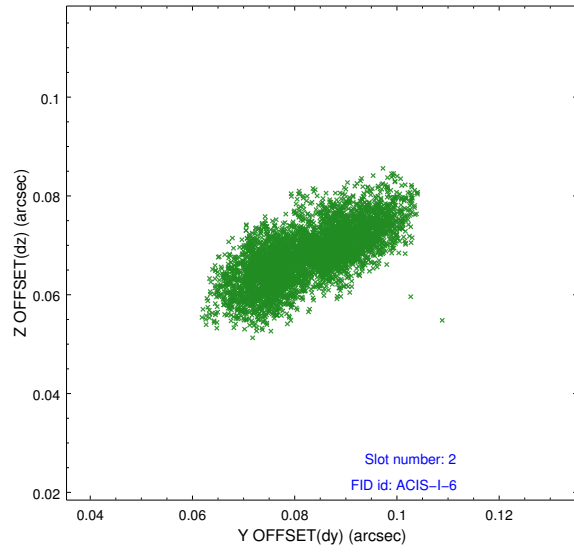
2.5.1 Slot 0



2.5.2 Slot 1



2.5.3 Slot 2



A Summary

A.1 Status

V&V Scientist	Jen Lauer
V&V Date (YYYY-MM-DD)	2012.02.14
V&V Edition	1
V&V Disposition and Status	OK
V&V Charge Time	19.254358878076

A.2 Comments

Joint proposal: NOAO