

V&V Reference Report

L2 ASCDS Version : 8.4.3

Observation 12495 - L2 Version 2
Chandra X-Ray Center

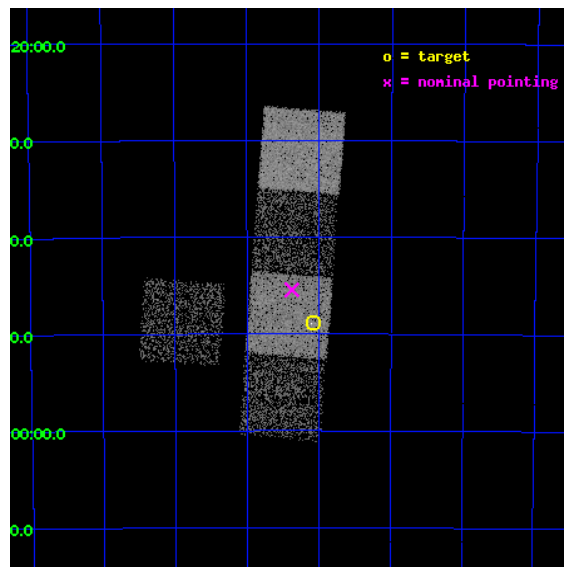
L2 Processing Date : Feb 20 2012

Contents

1	Front	2
2	OBI	3
2.1	OBI	3
2.1.1	Images	3
2.1.2	Bias	3
2.1.3	Parameters	4
2.1.4	Events	4
2.2	Compared Parameters	5
2.3	Aspect	6
2.4	Star Slots	9
2.4.1	Slot 3	9
2.4.2	Slot 4	10
2.4.3	Slot 5	11
2.4.4	Slot 6	12
2.4.5	Slot 7	13
2.5	FID Slots	14
2.5.1	Slot 0	14
2.5.2	Slot 1	15
2.5.3	Slot 2	16
A	Summary	17
A.1	Status	17
A.2	Comments	17

1 Front

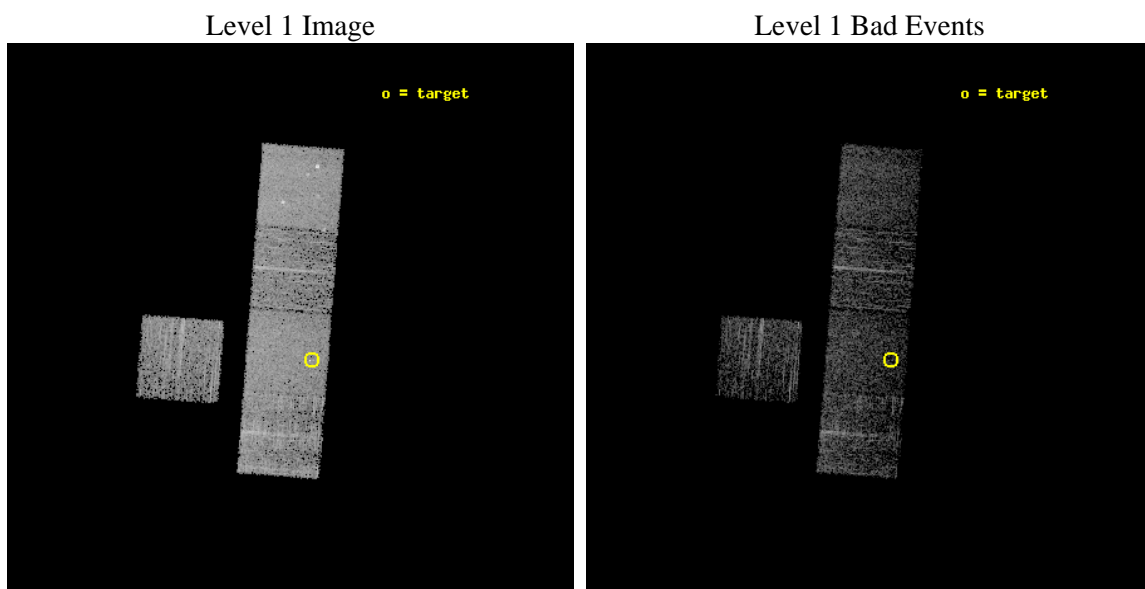
seq_num	401236	Sequence number
obs_id	12495	Observation id
title	The Nearest and Brightest Quiescent Low Mass X-ray Binaries	Propos
observer	Prof. Robert Rutledge	Principal investigator
object	1RXS J042704.5-594854	Source name
dtcycle	0	
cycle	P	events from which exps? Prim/Second/Both
ra_targ	66.76875	Observer's specified target RA [deg]
dec_targ	-59.815	Observer's specified target Dec [deg]
ra_nom	66.844118735806	Nominal RA [deg]
dec_nom	-59.757397023959	Nominal Dec [deg]
roll_nom	94.408724787869	Nominal Roll [deg]
revision	2	Processing version of data
ontime	3241.3451770544	Sum of GTIs [s]
livetime	3198.9946160726	Livetime [s]
ontime3	3241.2220570445	Sum of GTIs [s]
ontime5	3241.3041370511	Sum of GTIs [s]
ontime6	3241.2630970478	Sum of GTIs [s]
ontime7	3241.3451770544	Sum of GTIs [s]
ontime8	3241.1810170412	Sum of GTIs [s]
l2events	32724	Number of level 2 events



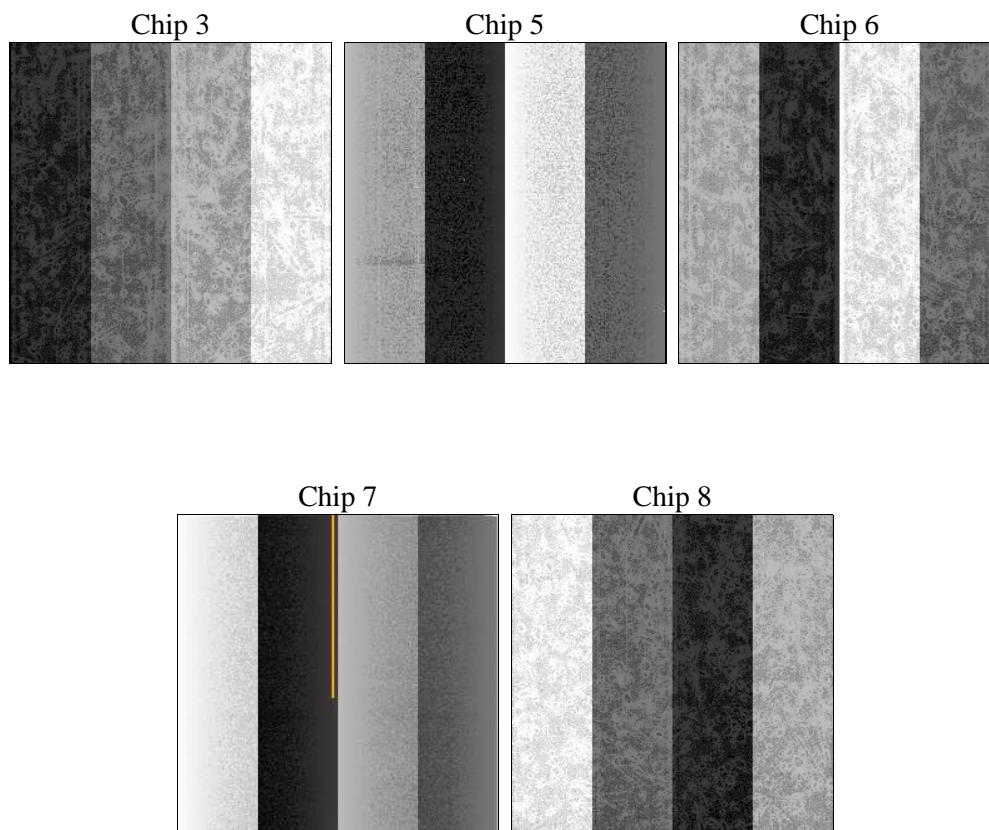
2 OBI

2.1 OBI

2.1.1 Images



2.1.2 Bias



2.1.3 Parameters

obi_num	0	Obi number	sched_exp_time	3200.000000	[s] Scheduled observation exposure time
ascdsver	8.4.3	Processing system revision	ontime	3241.3451770544	Sum of GTIs [s]
caldsver	4.4.8	 	ontime3	3241.2220570445	Sum of GTIs [s]
date	2012-02-20T23:47:09	Date and time of file creation	ontime5	3241.3041370511	Sum of GTIs [s]
revision	2	Processing version of data	ontime6	3241.2630970478	Sum of GTIs [s]
			ontime7	3241.3451770544	Sum of GTIs [s]
			ontime8	3241.1810170412	Sum of GTIs [s]
			l1events	123343	Number of level 1 events

2.1.4 Events

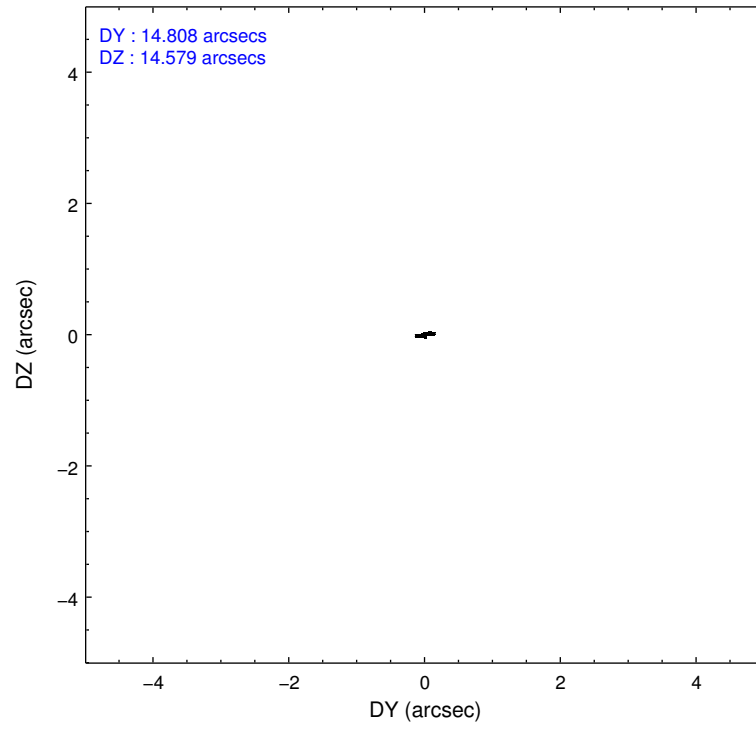
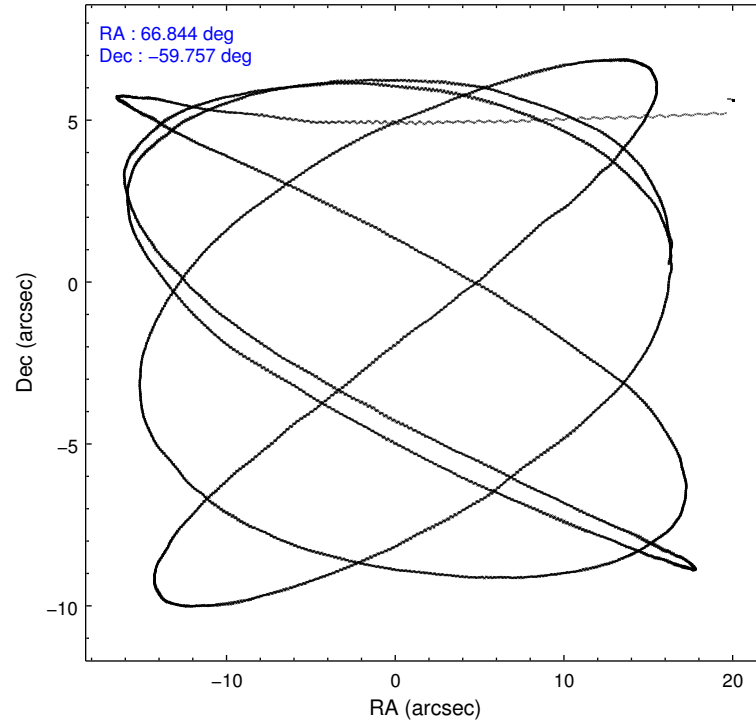
	ccd 3	ccd 5	ccd 6	ccd 7	ccd 8
level 1 events	19558	32656	19852	26526	24751
rejected events	17461	16298	17417	14598	18245
rejected %	89%	49%	87%	55%	73%

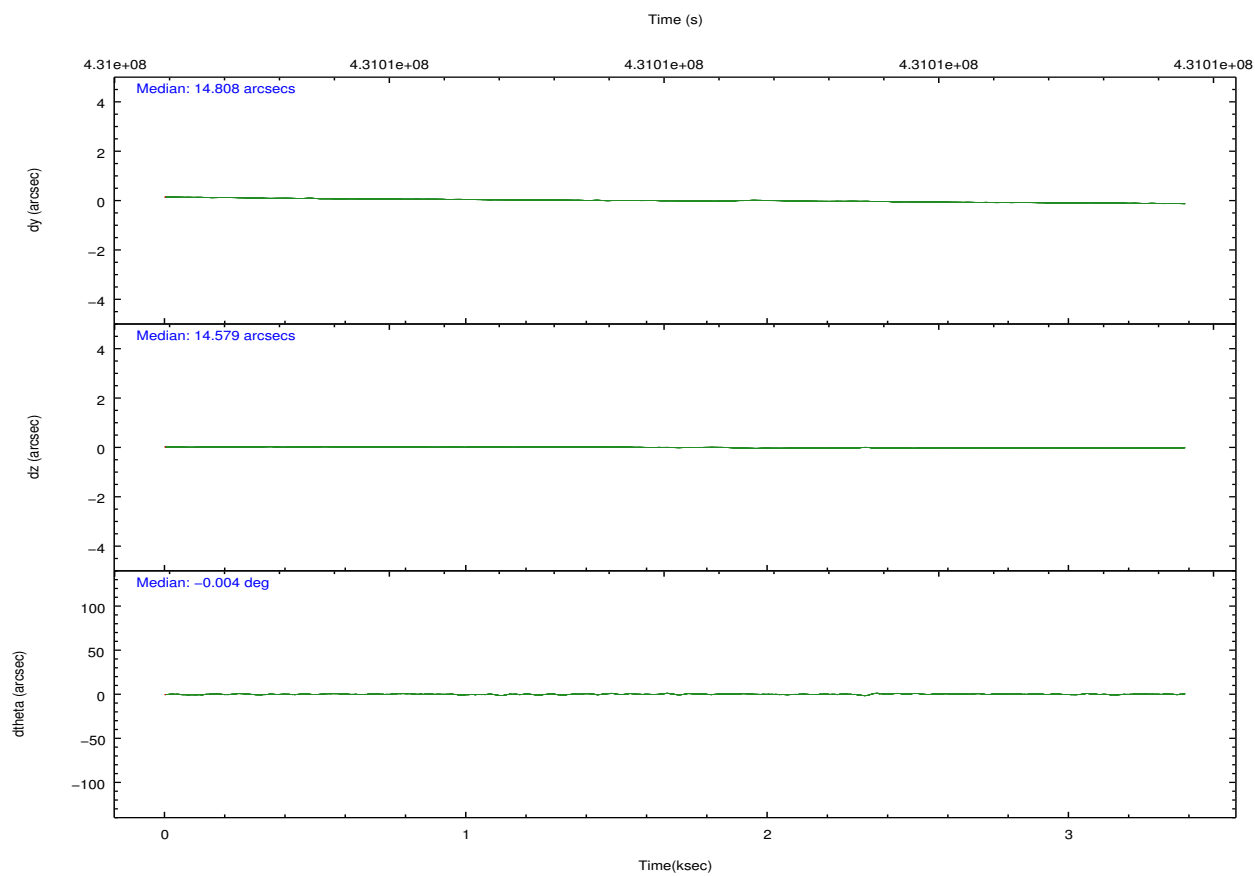
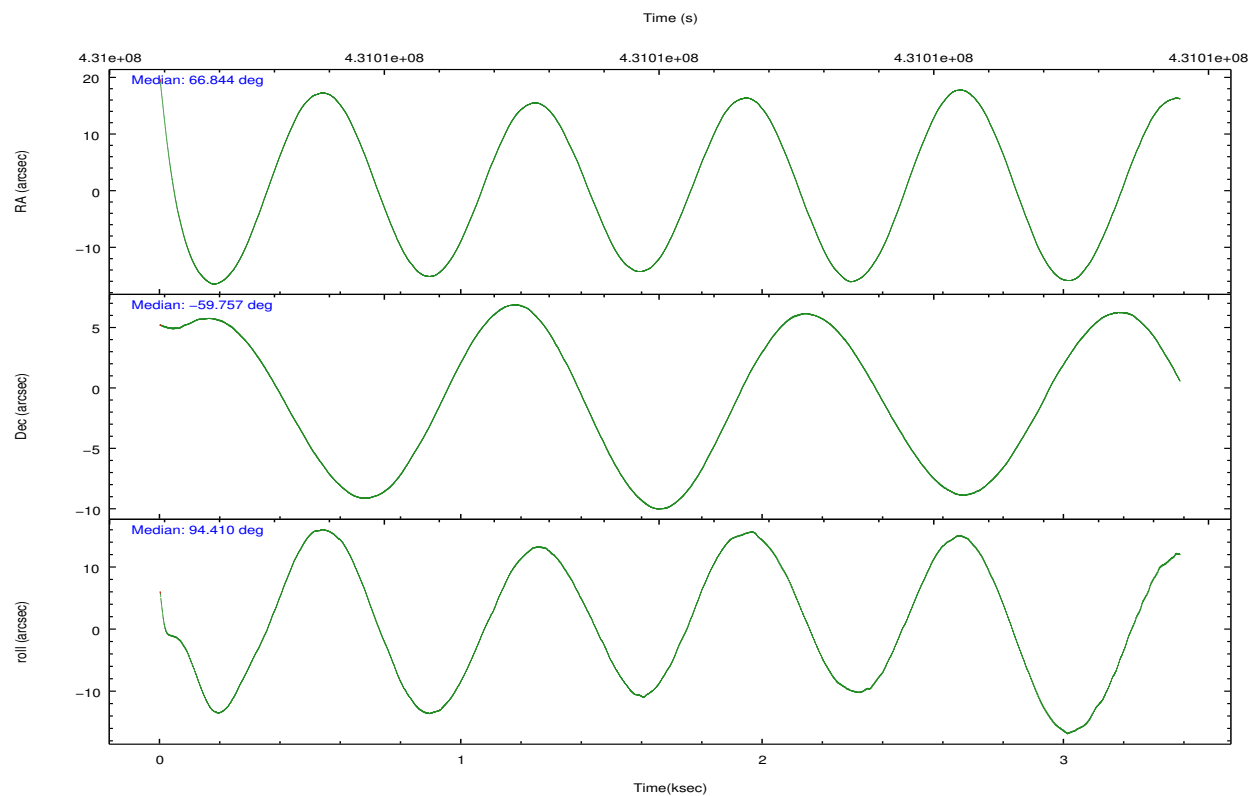
	ccd 3	ccd 5	ccd 6	ccd 7	ccd 8
grade 0 events	692	1991	864	1175	2000
	3%	6%	4%	4%	8%
grade 1 events	11	88	5	32	20
	0%	0%	0%	0%	0%
grade 2 events	458	4853	545	2422	1541
	2%	14%	2%	9%	6%
grade 3 events	215	606	291	1044	720
	1%	1%	1%	3%	2%
grade 4 events	250	565	243	1051	620
	1%	1%	1%	3%	2%
grade 5 events	1017	2369	1005	2738	1425
	5%	7%	5%	10%	5%
grade 6 events	486	8356	494	6245	1650
	2%	25%	2%	23%	6%
grade 7 events	16429	13828	16405	11819	16775
	84%	42%	82%	44%	67%

2.2 Compared Parameters

Parameter	Planned	Actual	Parameter	Planned	Actual
Instrument	ACIS	ACIS	Obspar format version number	7	7
Detector	ACIS-35678	ACIS-35678	Obspar file type	PREDICTED	ACTUAL
Grating	NONE	NONE	Obspar update status	NONE	UPDATED
Data mode	FAINT	FAINT	CCD I0 on	N	N
Observation mode	POINTING	POINTING	CCD I1 on	N	N
[deg] Pointing RA	66.875551	66.84411873580578	CCD I2 on	N	N
[deg] Pointing Dec	-59.779944	-59.75739702395911	CCD I3 on	O1	Y
[deg] Pointing Roll	94.279330	94.40872478786855	CCD S0 on	N	N
[mm] SIM focus pos	-0.684267	-0.6828225247311905	CCD S1 on	Y	Y
[mm] SIM defocus	0	0.001444936568705701	CCD S2 on	Y	Y
[mm] SIM translation stage pos	-190.132523	-190.1400660498719	CCD S3 on	Y	Y
[mm] SIM translation stage offset	0	0.00754346686406393	CCD S4 on	Y	Y
[s] Observation start time (MET)	431005531.184000	431004565.7301	CCD S5 on	N	N
Observation start date	2011-08-29T11:44:25	2011-08-29T11:29:25	Number of optional ACIS chips dropped	0	0
[s] Observation end time (MET)	431008731.184000	431009588.74286	On-chip summing requested	N	N
Observation end date	2011-08-29T12:37:45	2011-08-29T12:53:08	Subarray requested	NONE	NONE
Read mode	TIMED	TIMED	Alternating exposures requested	N	N
			[s] Primary exposure time	0.000000	3.1

2.3 Aspect



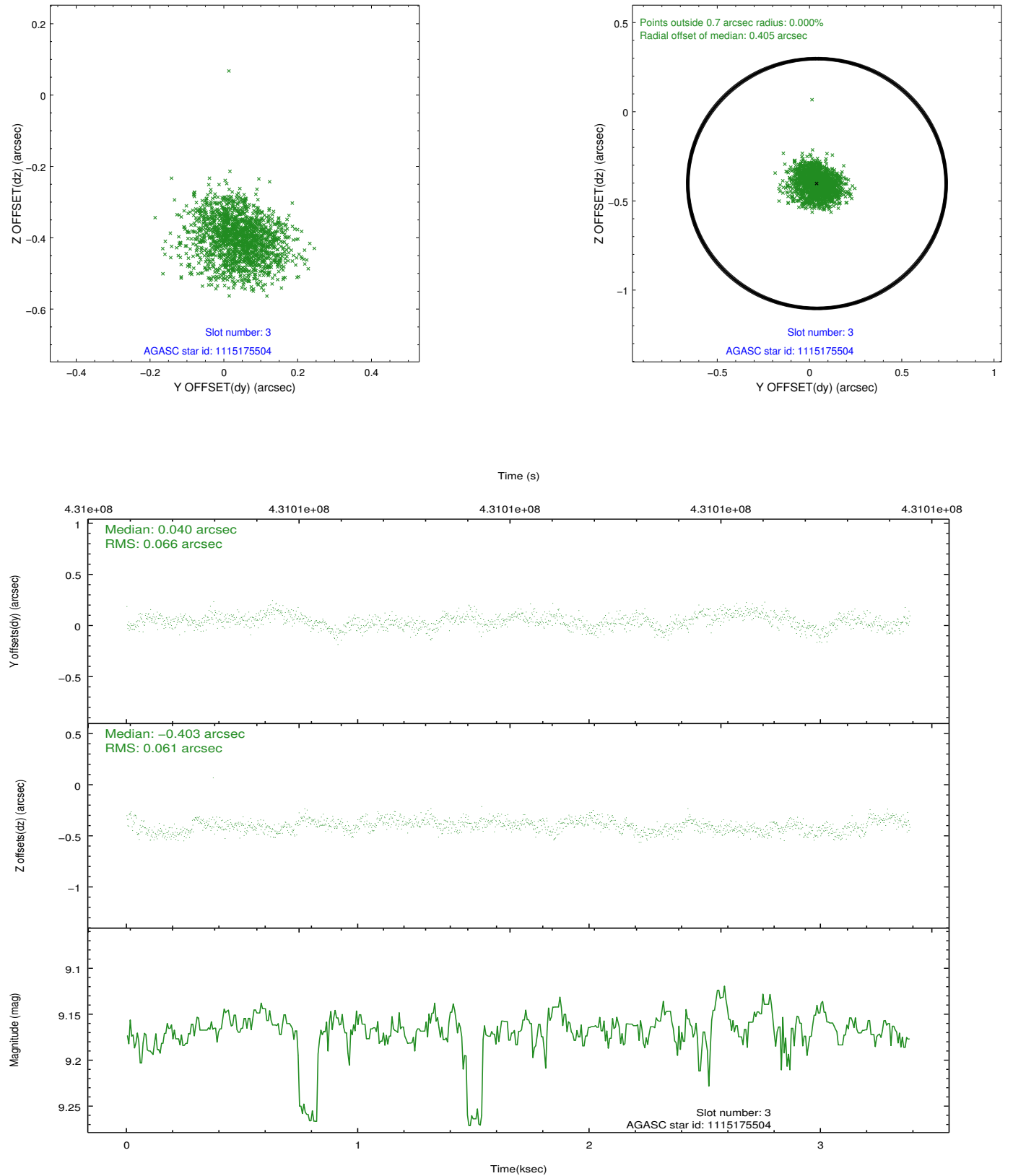


Slot Statistics

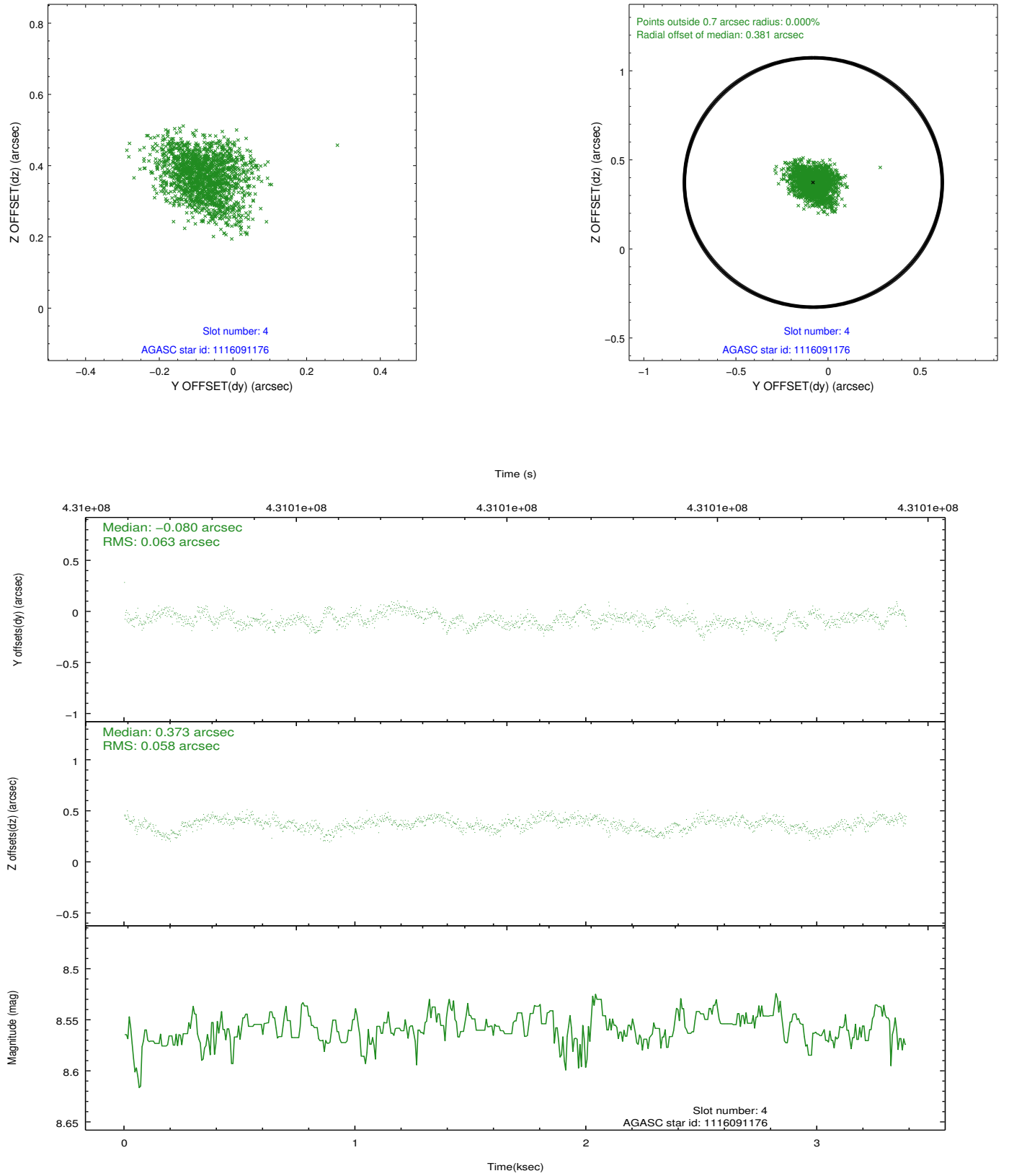
slot	status	id	mag	n_pts	med_dy	med_dz	dr1	dr2	ra	dec	mean_y	mean_z
0	FID	ACIS-S-2	6.95	826	-0.118	-0.046	0.006	0.010	0.000000	0.000000	-767.90	-1735.99
1	FID	ACIS-S-4	7.04	826	0.286	0.069	0.005	0.010	0.000000	0.000000	2144.93	170.66
2	FID	ACIS-S-5	7.07	826	-0.200	-0.014	0.007	0.012	0.000000	0.000000	-1818.42	166.39
3	GUIDE	1115175504	9.17	1650	0.040	-0.403	0.097	0.153	66.236042	-59.470682	1191.73	1083.27
4	GUIDE	1116091176	8.56	1645	-0.080	0.373	0.092	0.149	67.832782	-59.211968	1895.15	-1909.49
5	GUIDE	1116092864	7.37	1651	0.073	-0.059	0.090	0.149	67.848707	-59.766865	-96.53	-1762.79
6	GUIDE	1162496192	9.28	1651	-0.055	0.115	0.116	0.177	67.319166	-60.268234	-1814.34	-659.77
7	GUIDE	1162496816	9.80	1645	0.021	-0.040	0.188	0.362	68.121277	-60.312021	-2097.77	-2070.87

2.4 Star Slots

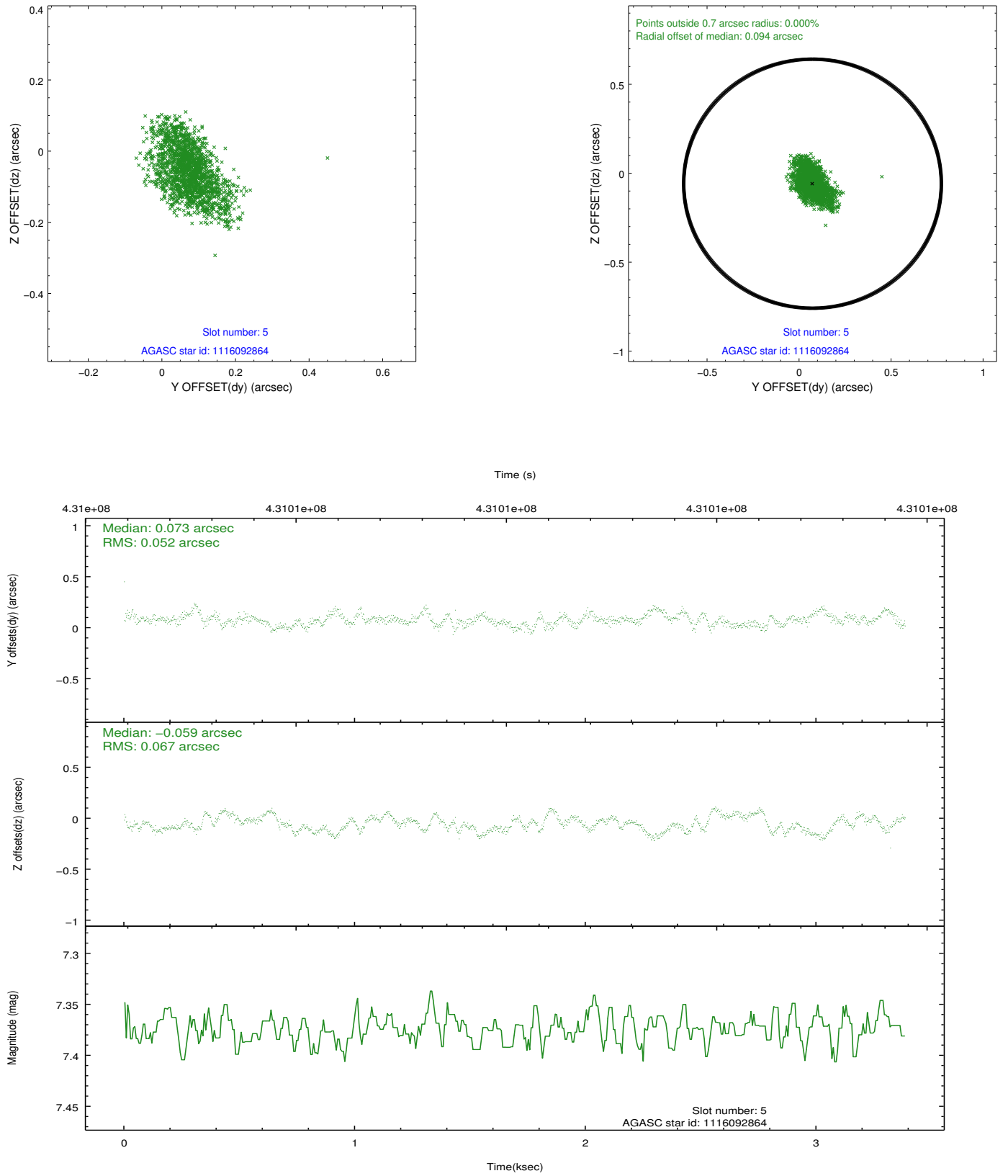
2.4.1 Slot 3



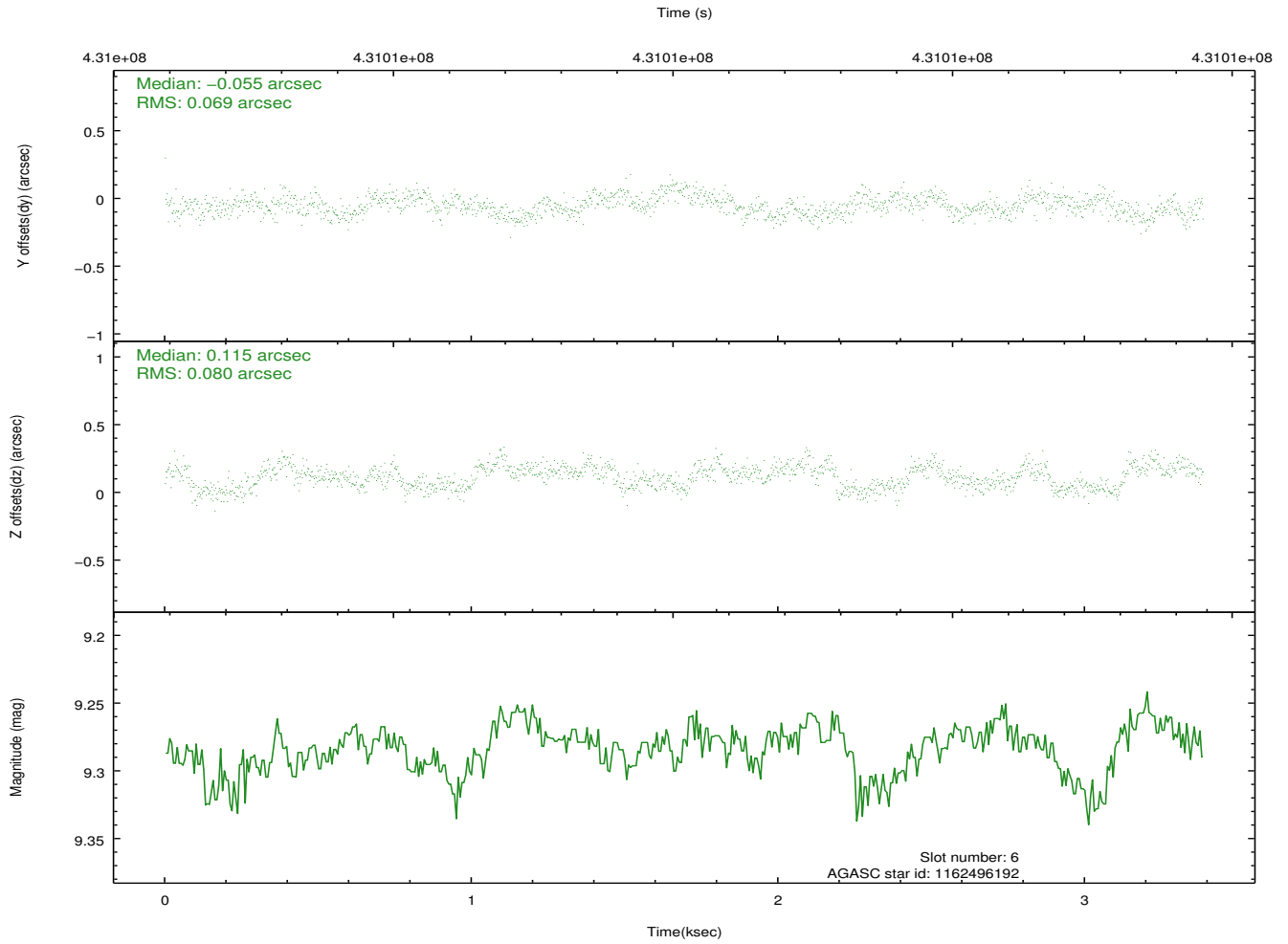
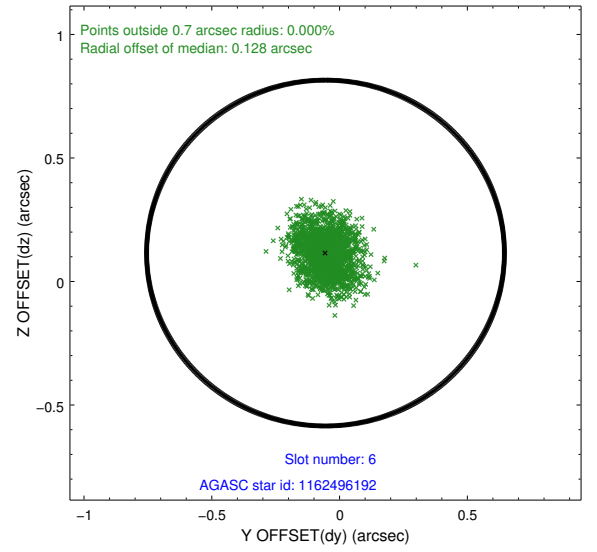
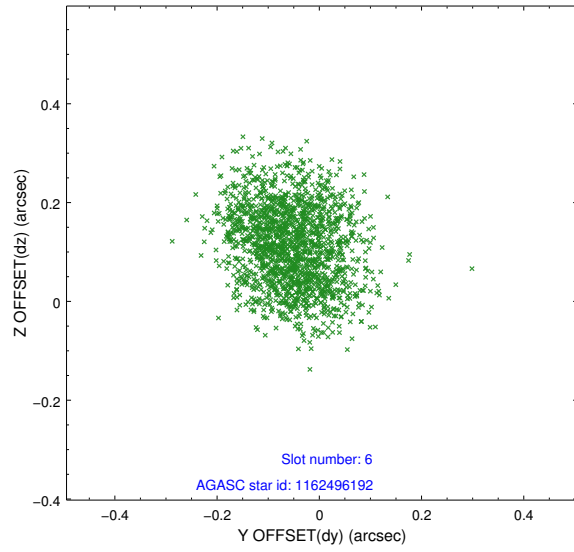
2.4.2 Slot 4



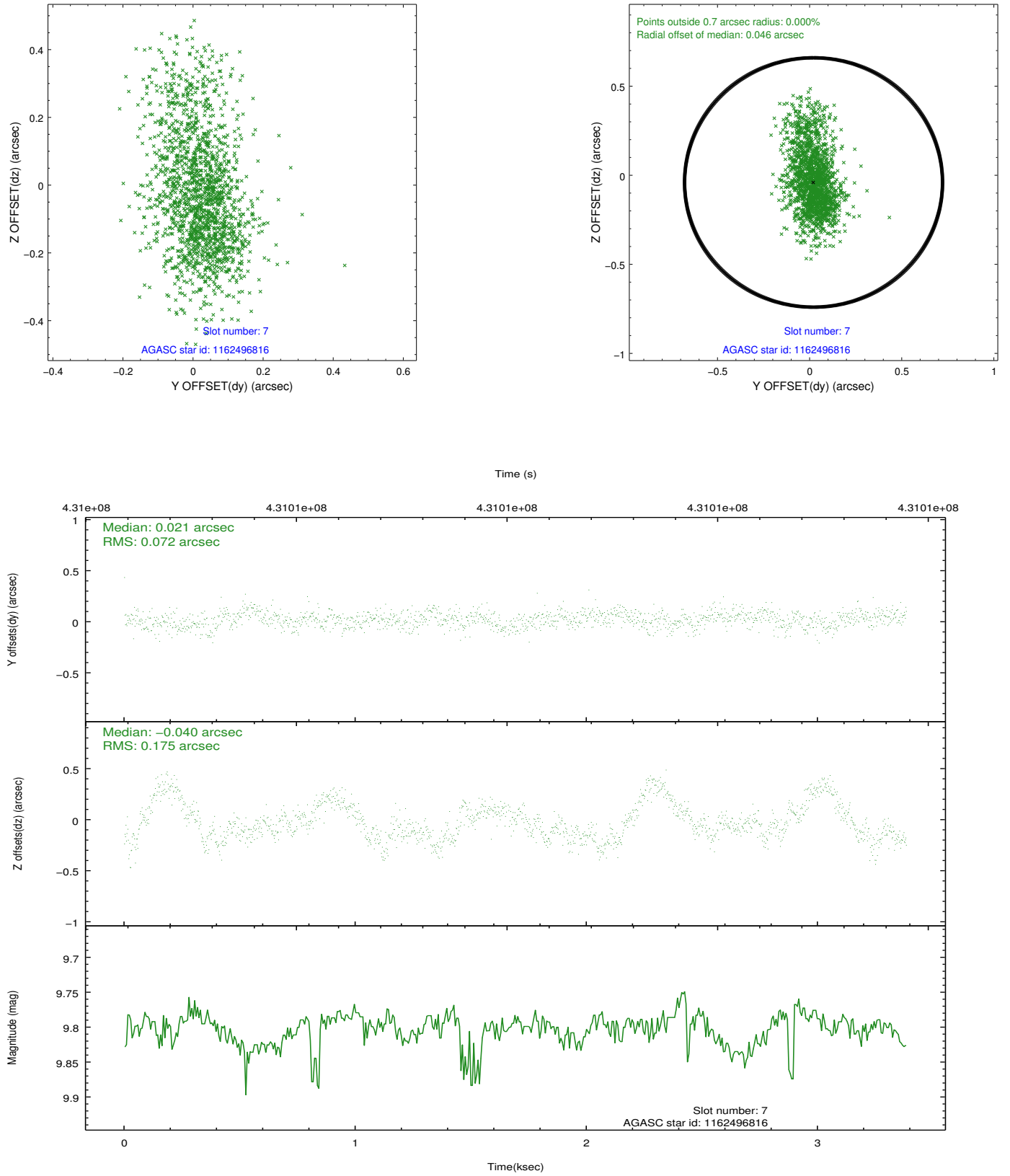
2.4.3 Slot 5



2.4.4 Slot 6

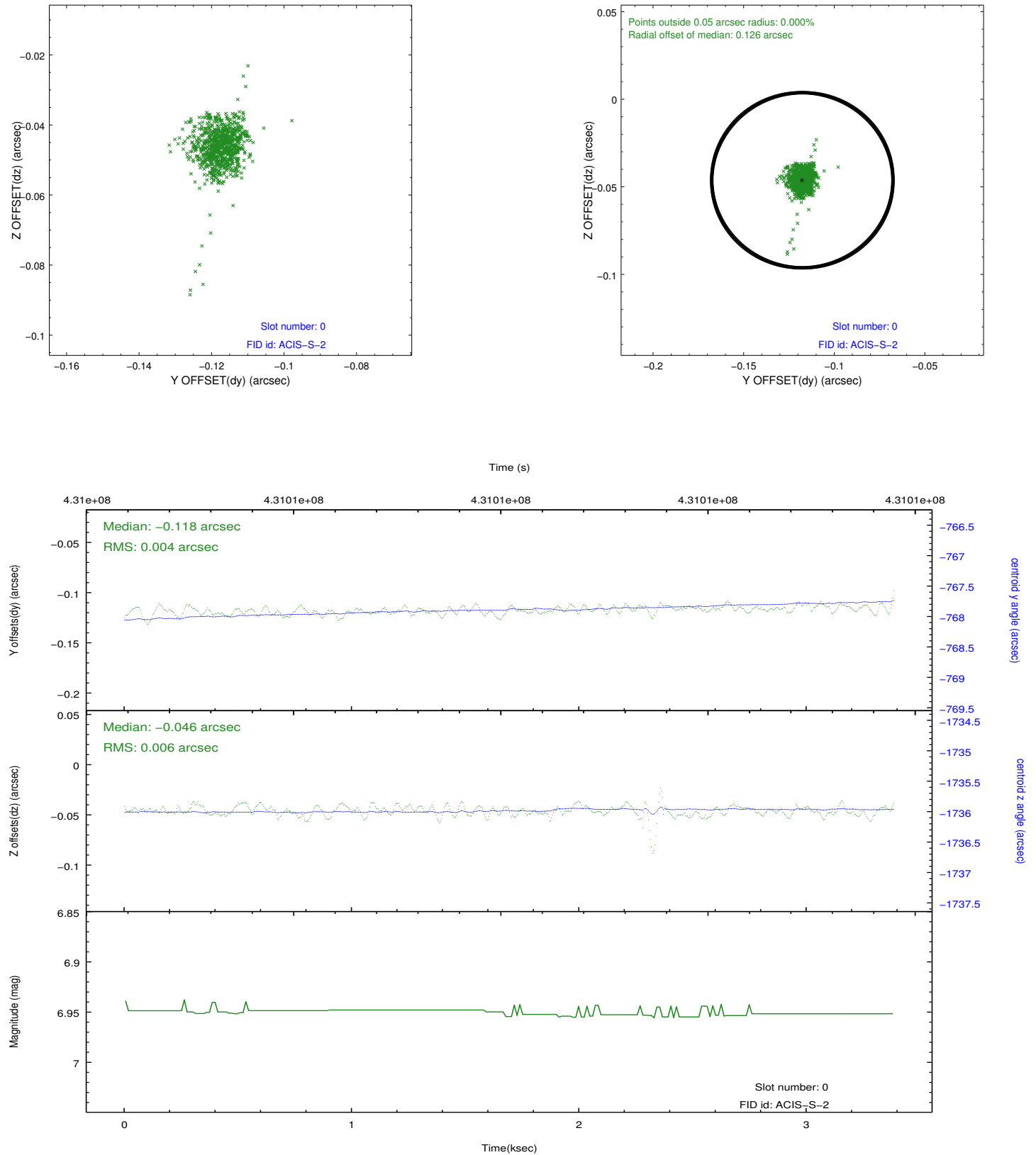


2.4.5 Slot 7

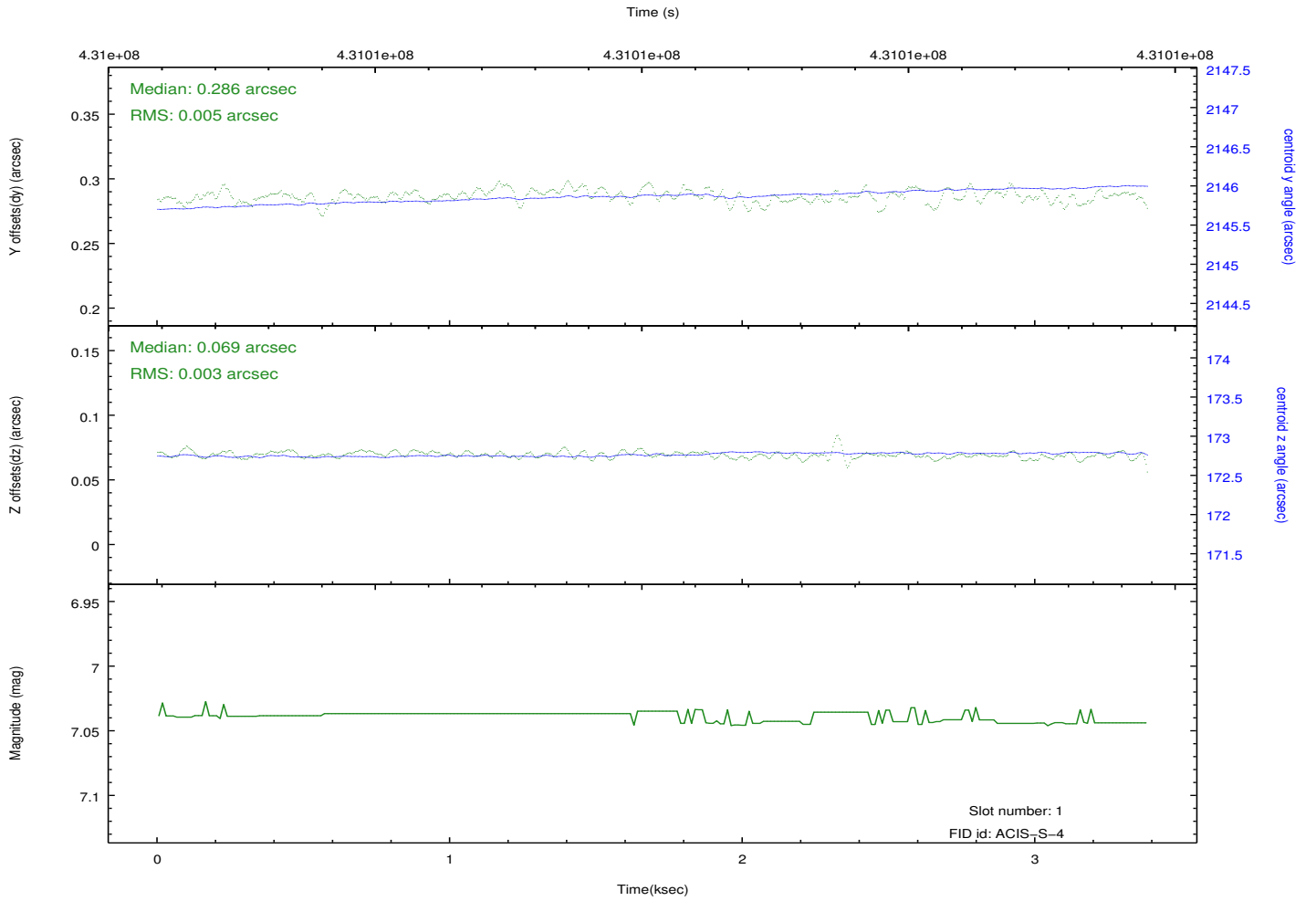
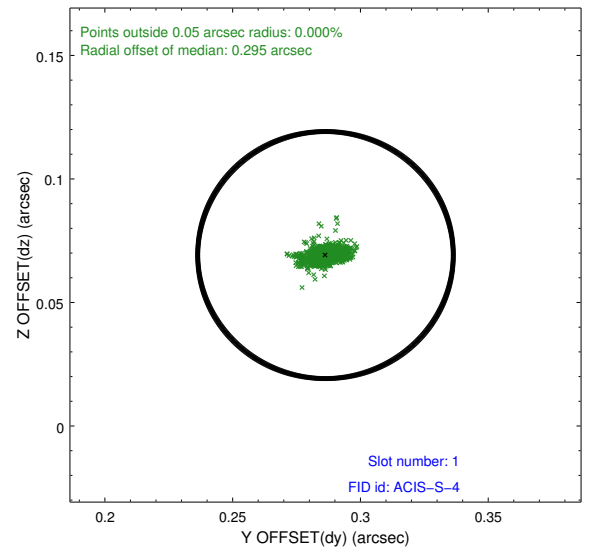
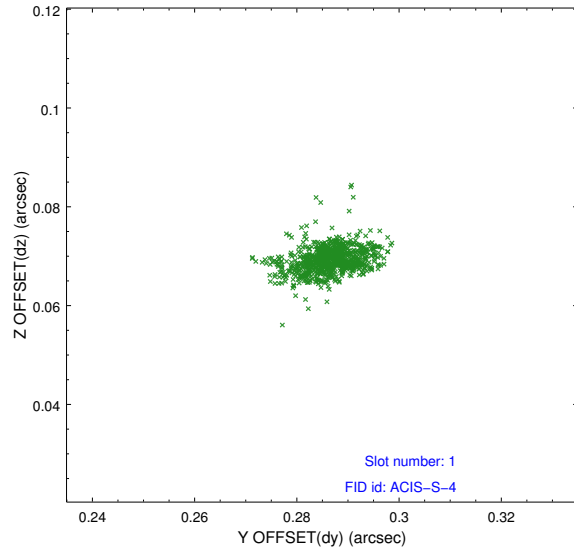


2.5 FID Slots

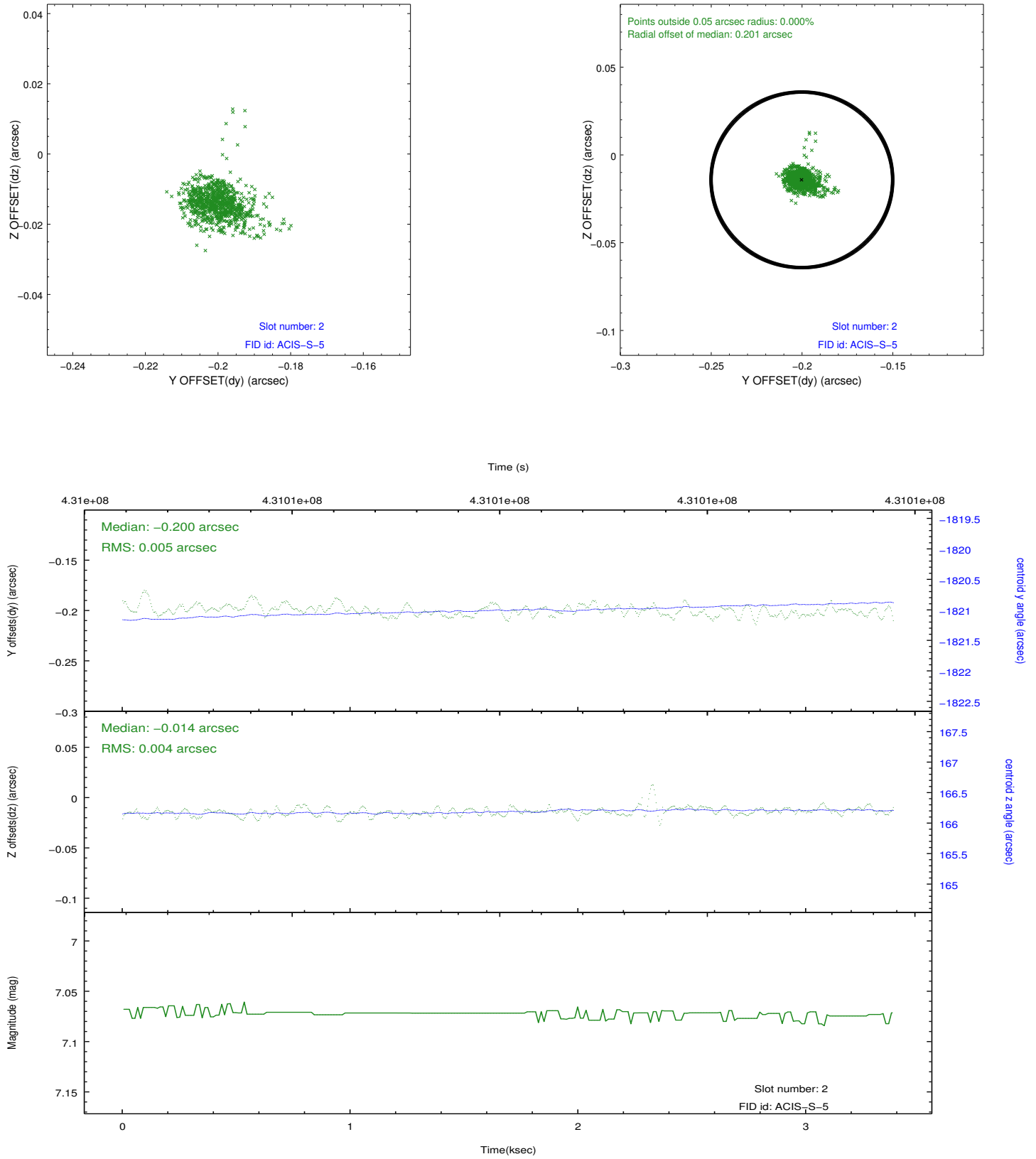
2.5.1 Slot 0



2.5.2 Slot 1



2.5.3 Slot 2



A Summary

A.1 Status

V&V Scientist	Jen Lauer
V&V Date (YYYY-MM-DD)	2012.02.22
V&V Edition	1
V&V Disposition and Status	OK
V&V Charge Time	3.2413451749682

A.2 Comments