

V&V Reference Report

L2 ASCDS Version : 8.4.5

Observation 11866 - L2 Version 2
Chandra X-Ray Center

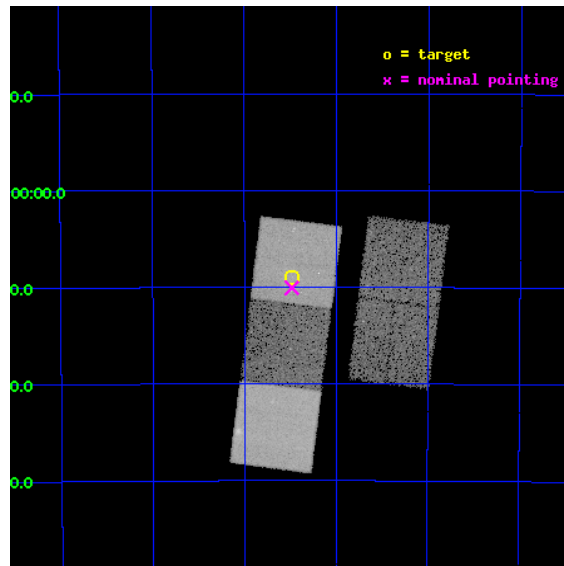
L2 Processing Date : Jun 21 2012

Contents

1	Front	2
2	OBI	3
2.1	OBI	3
2.1.1	Images	3
2.1.2	Bias	3
2.1.3	Parameters	4
2.1.4	Events	4
2.2	Compared Parameters	5
2.3	Aspect	6
2.4	Star Slots	9
2.4.1	Slot 3	9
2.4.2	Slot 4	10
2.4.3	Slot 5	11
2.4.4	Slot 6	12
2.4.5	Slot 7	13
2.5	FID Slots	14
2.5.1	Slot 0	14
2.5.2	Slot 1	15
2.5.3	Slot 2	16
A	Summary	17
A.1	Status	17
A.2	Comments	17

1 Front

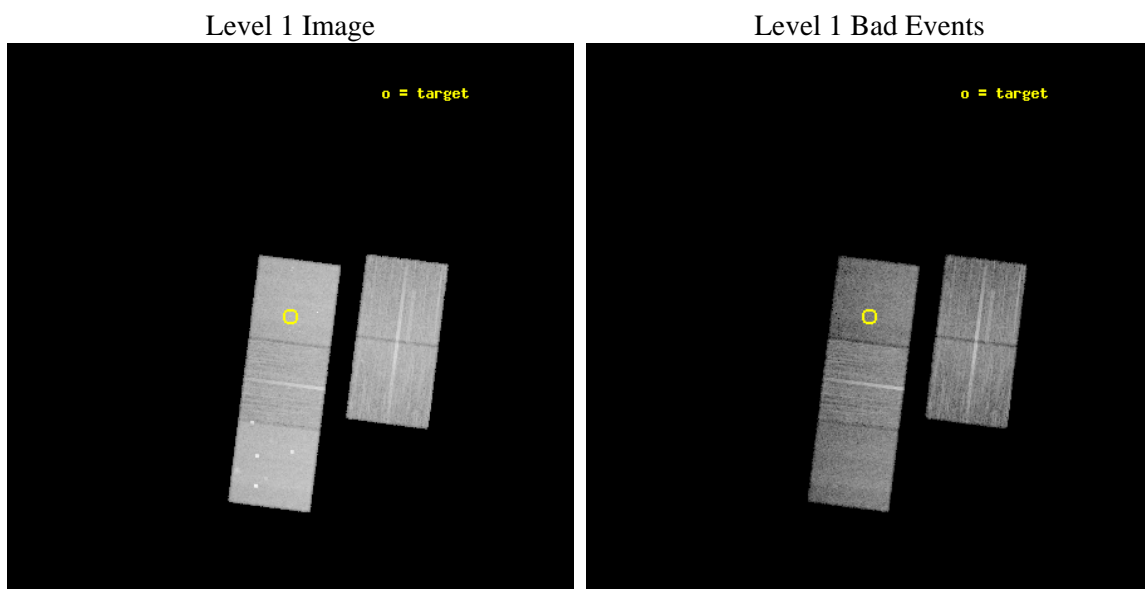
seq_num	800920	Sequence number
obs_id	11866	Observation id
title	Chandra observations of low-z galaxy groups	Proposal title
observer	Dr. Stephen Murray	Principal investigator
object	cl0422-5009	Source name
dtcycle	0	
cycle	P	events from which exps? Prim/Second/Both
ra_targ	65.62	Observer's specified target RA [deg]
dec_targ	-50.150278	Observer's specified target Dec [deg]
ra_nom	65.620816278345	Nominal RA [deg]
dec_nom	-50.167801080552	Nominal Dec [deg]
roll_nom	277.2365621026	Nominal Roll [deg]
revision	2	Processing version of data
ontime	15140.400116444	Sum of GTIs [s]
livetime	14942.579642722	Livetime [s]
ontime2	15140.400116444	Sum of GTIs [s]
ontime3	15124.695294678	Sum of GTIs [s]
ontime5	15140.400116444	Sum of GTIs [s]
ontime6	15140.400116444	Sum of GTIs [s]
ontime7	15140.400116444	Sum of GTIs [s]
l2events	185371	Number of level 2 events



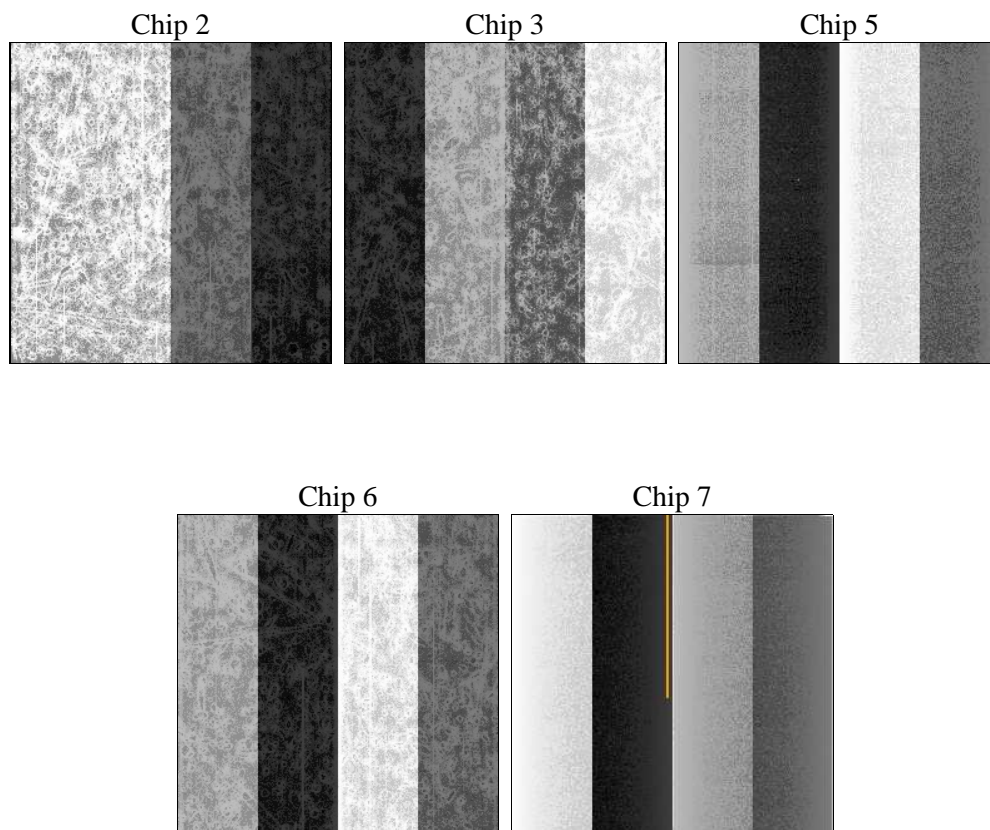
2 OBI

2.1 OBI

2.1.1 Images



2.1.2 Bias



2.1.3 Parameters

obi_num	0	Obi number	sched_exp_time	15000.000000	[s] Scheduled observation exposure time
ascdsver	8.4.5	Processing system revision	ontime	15140.400116444	Sum of GTIs [s]
caldsver	4.4.10	 	ontime2	15140.400116444	Sum of GTIs [s]
date	2012-06-21T16:13:27	Date and time of file creation	ontime3	15124.695294678	Sum of GTIs [s]
revision	2	Processing version of data	ontime5	15140.400116444	Sum of GTIs [s]
			ontime6	15140.400116444	Sum of GTIs [s]
			ontime7	15140.400116444	Sum of GTIs [s]
			l1events	744448	Number of level 1 events

2.1.4 Events

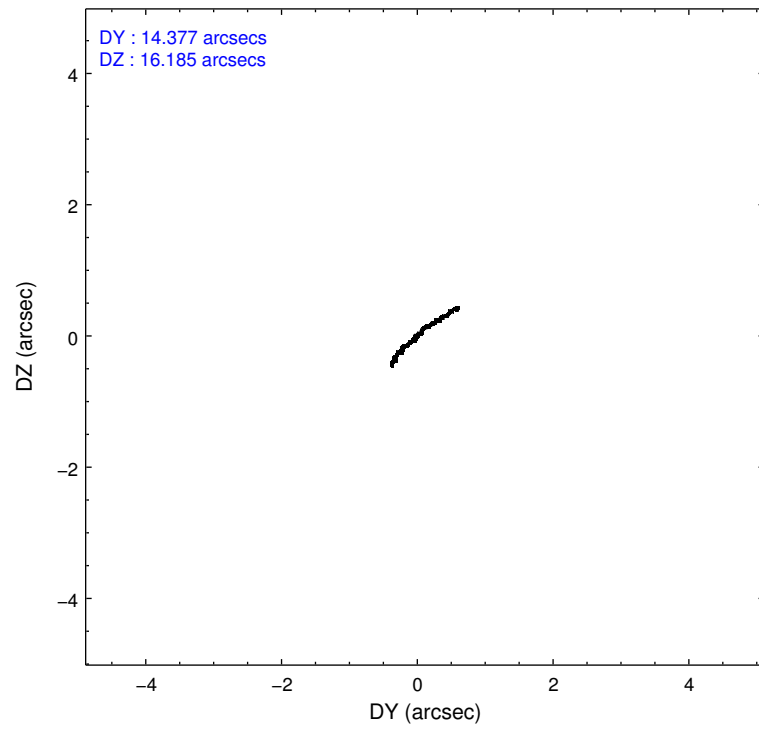
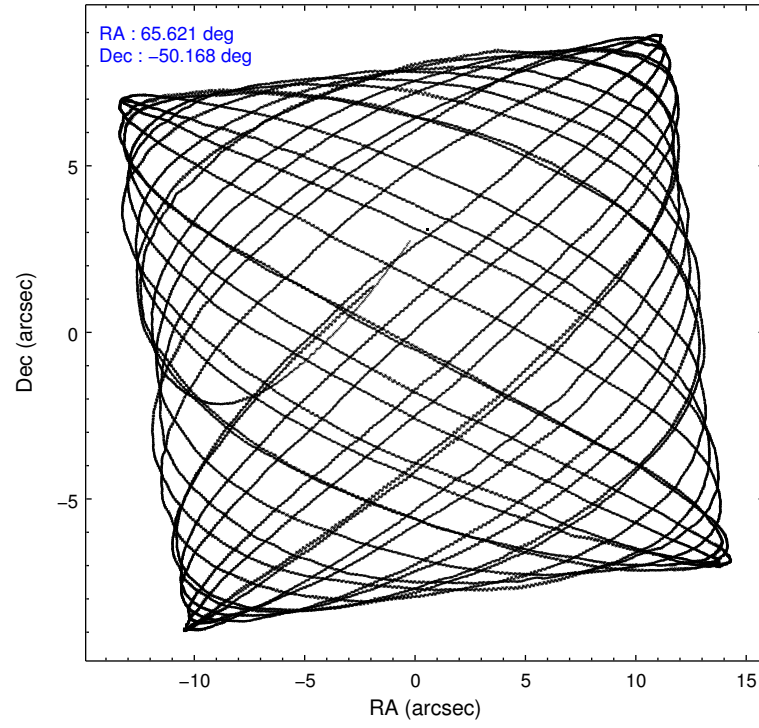
	ccd 2	ccd 3	ccd 5	ccd 6	ccd 7
level 1 events	132498	126389	197503	132468	155590
rejected events	119624	114075	102380	118848	87630
rejected %	90%	90%	51%	89%	56%

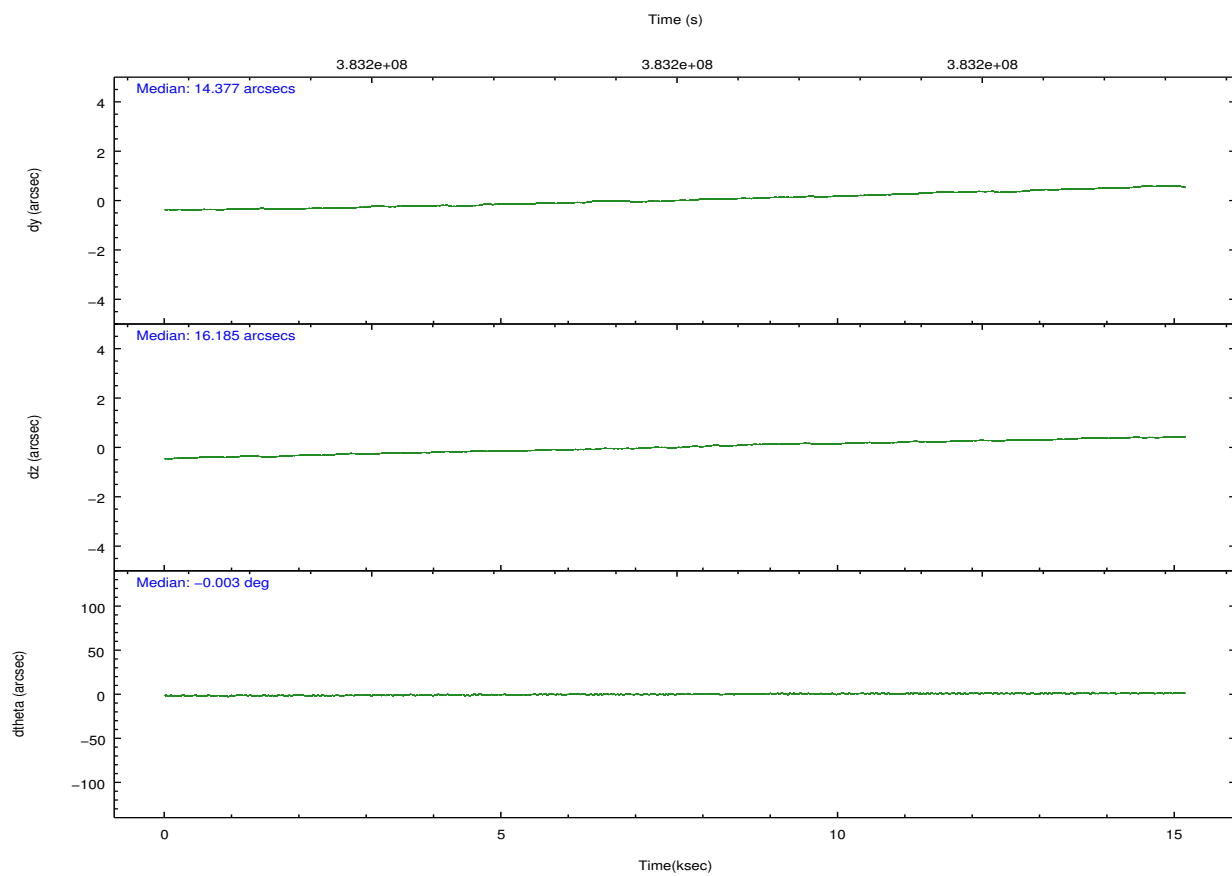
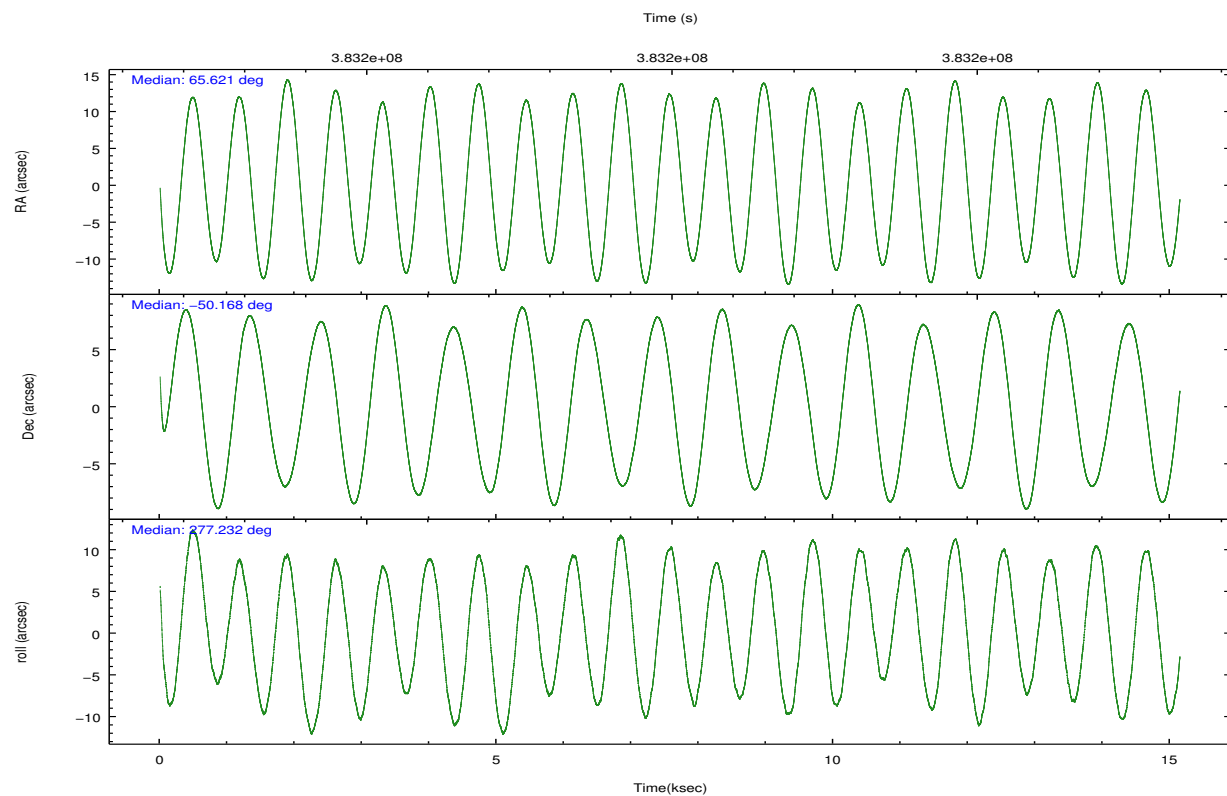
	ccd 2	ccd 3	ccd 5	ccd 6	ccd 7
grade 0 events	4763	4611	13362	5032	6995
	3%	3%	6%	3%	4%
grade 1 events	76	87	409	77	219
	0%	0%	0%	0%	0%
grade 2 events	3356	2790	29169	3206	14629
	2%	2%	14%	2%	9%
grade 3 events	1386	1432	4042	1509	6527
	1%	1%	2%	1%	4%
grade 4 events	1493	1513	3785	1492	6357
	1%	1%	1%	1%	4%
grade 5 events	4806	5675	15001	5656	16056
	3%	4%	7%	4%	10%
grade 6 events	2539	2620	50084	3129	37032
	1%	2%	25%	2%	23%
grade 7 events	114079	107661	81651	112367	67775
	86%	85%	41%	84%	43%

2.2 Compared Parameters

Parameter	Planned	Actual	Parameter	Planned	Actual
Instrument	ACIS	ACIS	Obspar format version number	7	7
Detector	ACIS-23567	ACIS-23567	Obspar file type	PREDICTED	ACTUAL
Grating	NONE	NONE	Obspar update status	NONE	UPDATED
Data mode	VFAINT	VFAINT	CCD I0 on	N	N
Observation mode	POINTING	POINTING	CCD I1 on	N	N
[deg] Pointing RA	65.594577	65.6208162783448	CCD I2 on	O1	Y
[deg] Pointing Dec	-50.146248	-50.16780108055221	CCD I3 on	Y	Y
[deg] Pointing Roll	277.059792	277.2365621026011	CCD S0 on	N	N
[mm] SIM focus pos	-0.684267	-0.6828225247311905	CCD S1 on	Y	Y
[mm] SIM defocus	0	0.001444936568705701	CCD S2 on	Y	Y
[mm] SIM translation stage pos	-190.132523	-190.1400660498719	CCD S3 on	Y	Y
[mm] SIM translation stage offset	0	0.00754346686406393	CCD S4 on	N	N
[s] Observation start time (MET)	383192544.184000	383191153.40205	CCD S5 on	N	N
Observation start date	2010-02-22T02:21:18	2010-02-22T01:59:13	Number of optional ACIS chips dropped	0	0
[s] Observation end time (MET)	383207544.184000	383208970.46545	On-chip summing requested	N	N
Observation end date	2010-02-22T06:31:18	2010-02-22T06:56:10	Subarray requested	NONE	NONE
Read mode	TIMED	TIMED	Alternating exposures requested	N	N
			[s] Primary exposure time	0.000000	3.1

2.3 Aspect



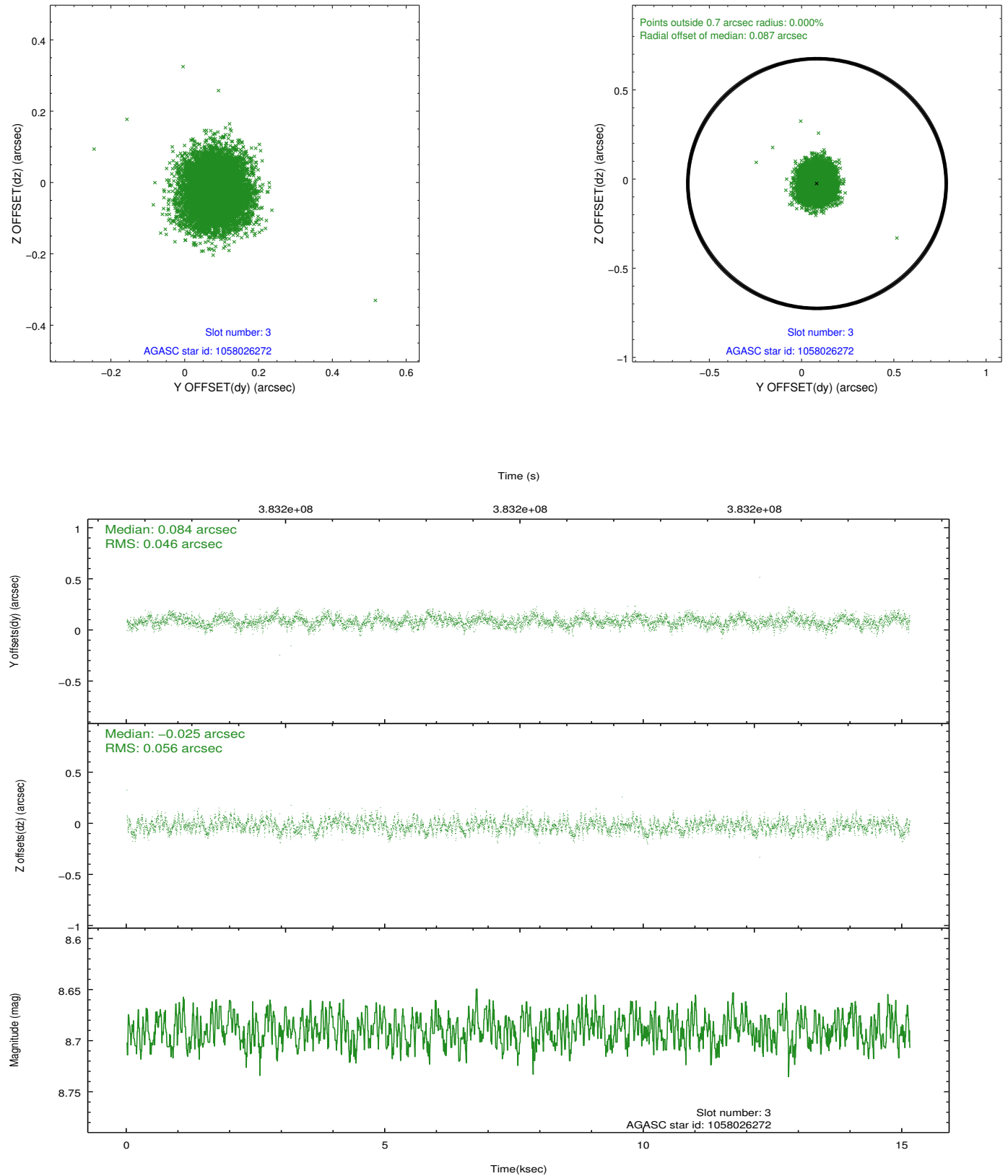


Slot Statistics

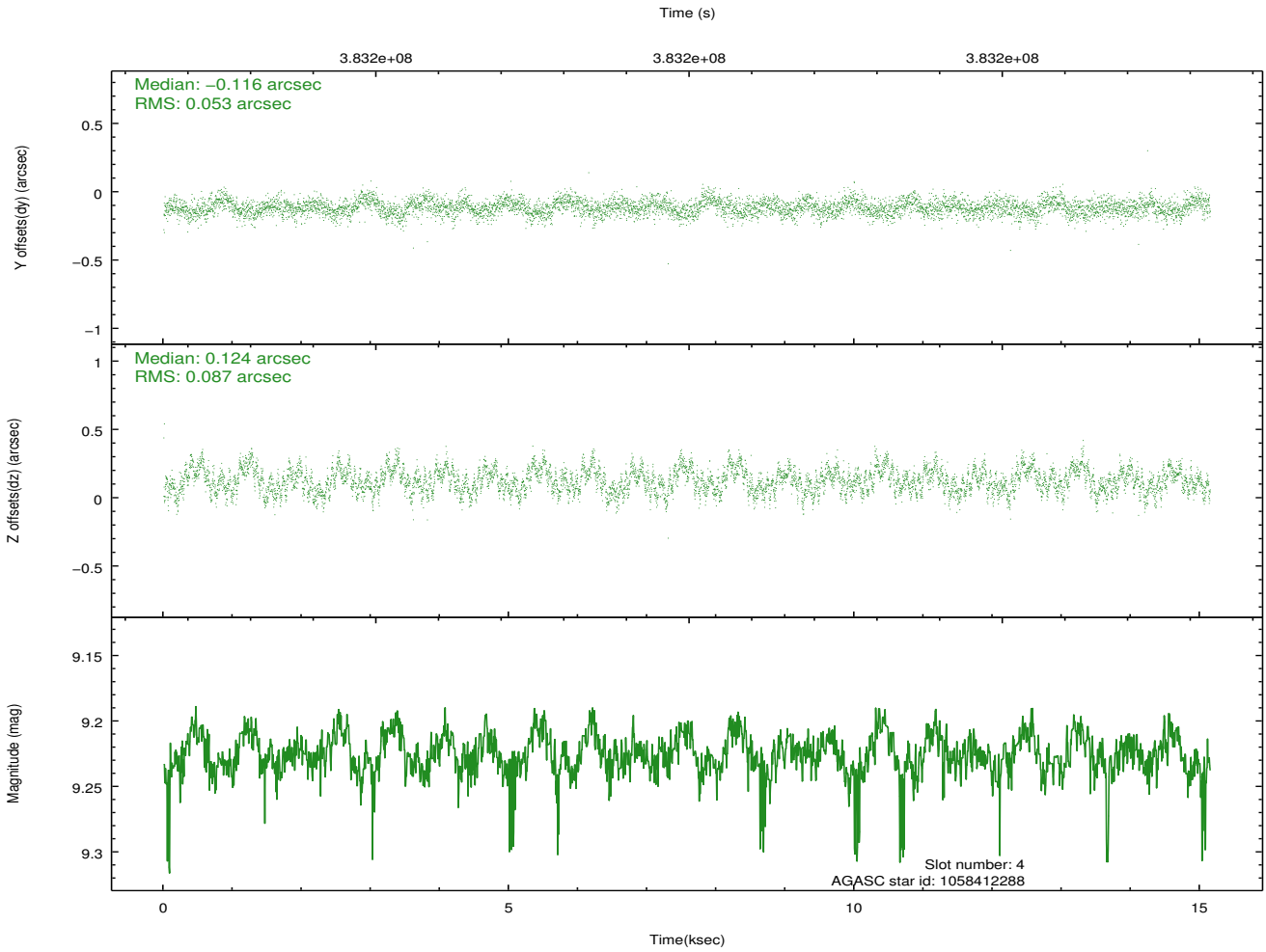
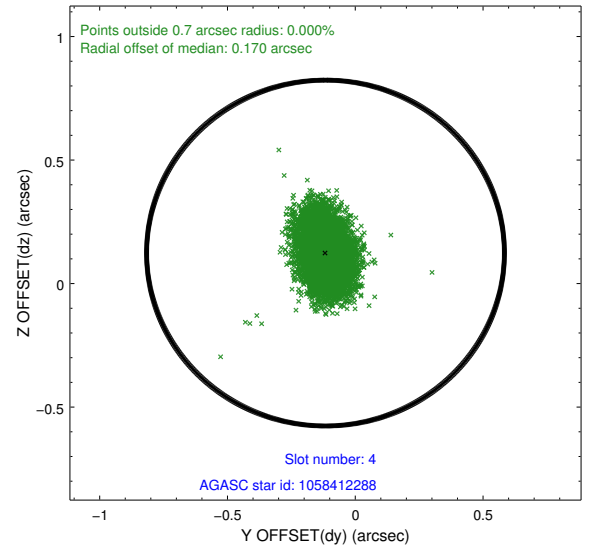
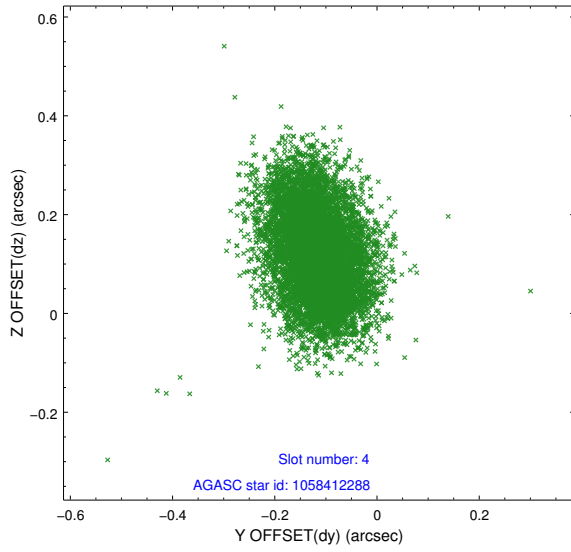
slot	status	id	mag	n_pts	med_dy	med_dz	dr1	dr2	ra	dec	mean_y	mean_z
0	FID	ACIS-S-2	6.90	3693	-0.113	-0.072	0.006	0.011	0.000000	0.000000	-767.53	-1737.66
1	FID	ACIS-S-4	6.99	3694	0.121	0.060	0.007	0.012	0.000000	0.000000	2145.89	170.58
2	FID	ACIS-S-6	7.13	3694	-0.036	0.019	0.007	0.011	0.000000	0.000000	394.97	808.31
3	GUIDE	1058026272	8.69	7387	0.084	-0.025	0.078	0.122	64.714215	-49.838898	-1336.84	-1893.67
4	GUIDE	1058412288	9.23	7377	-0.116	0.124	0.108	0.177	65.457997	-50.004198	-546.00	-250.75
5	GUIDE	1058418424	9.55	7372	0.046	-0.059	0.100	0.162	65.947855	-50.664334	1952.09	571.11
6	GUIDE	1058419656	7.71	7389	-0.078	-0.073	0.055	0.090	66.211277	-50.622190	1881.10	1186.12
7	GUIDE	1058026208	9.57	7378	0.066	0.035	0.134	0.219	64.497631	-49.681672	-1954.74	-2331.23

2.4 Star Slots

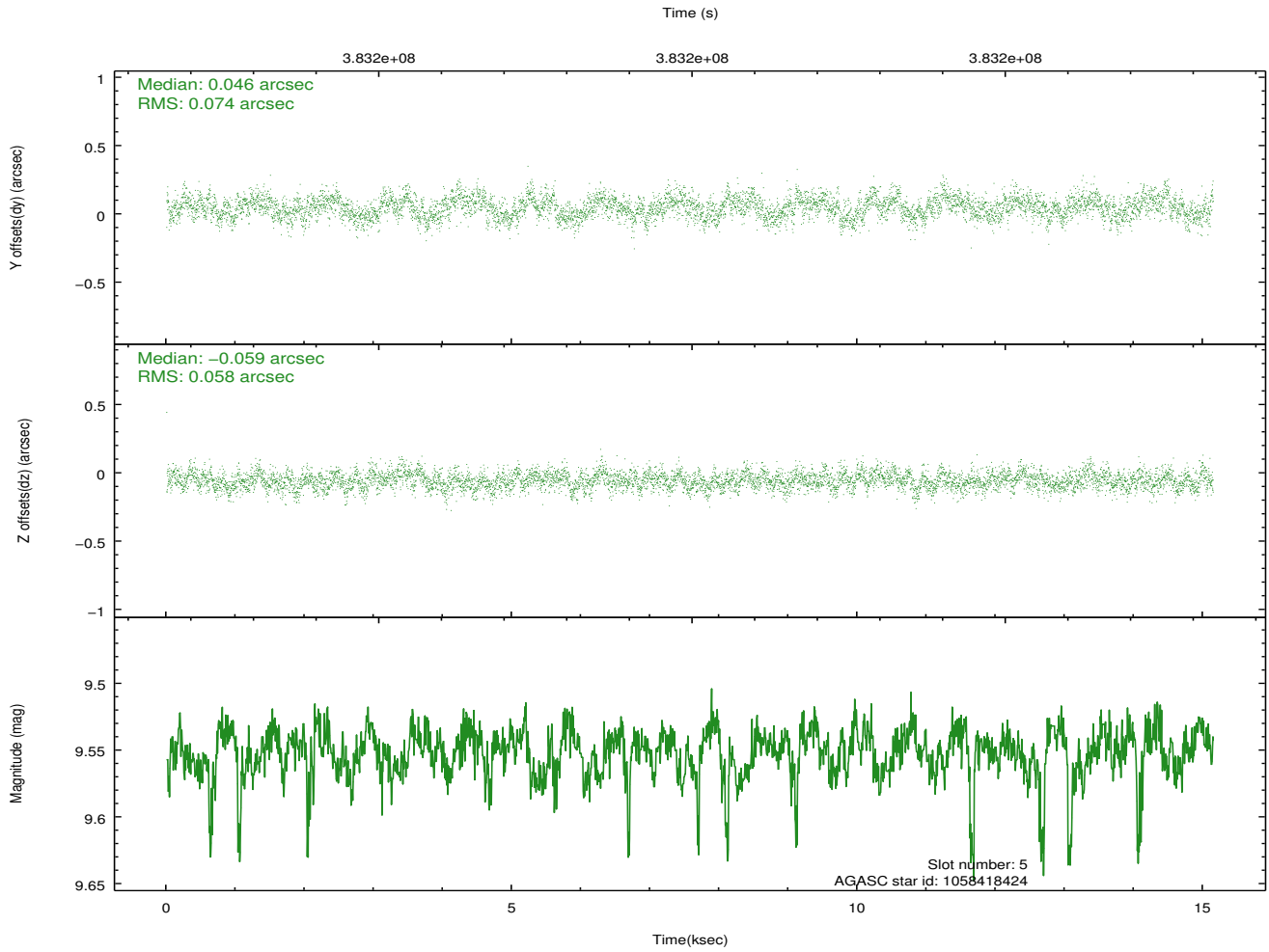
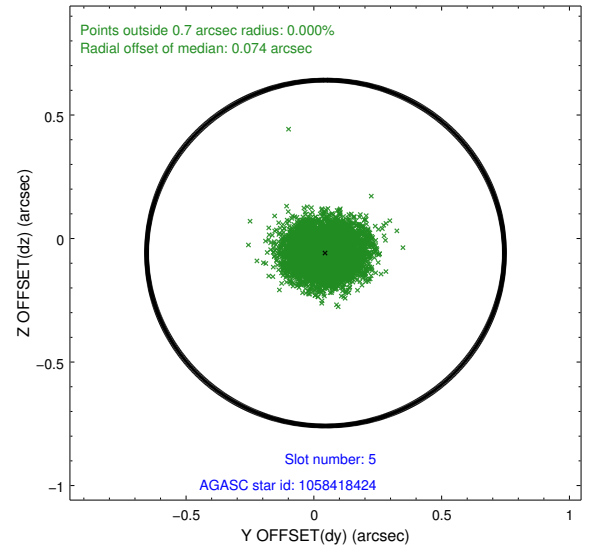
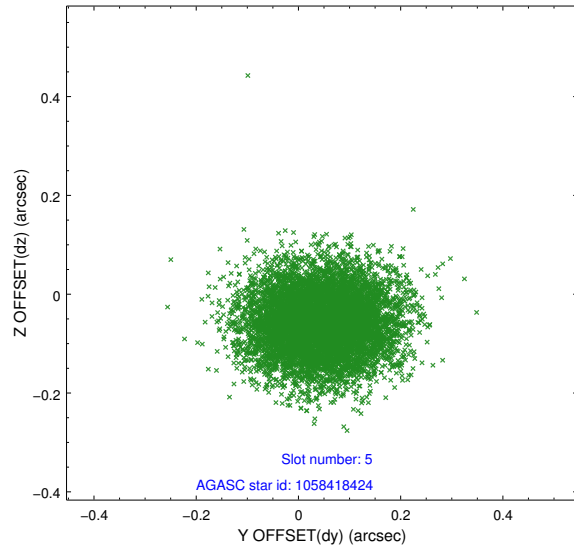
2.4.1 Slot 3



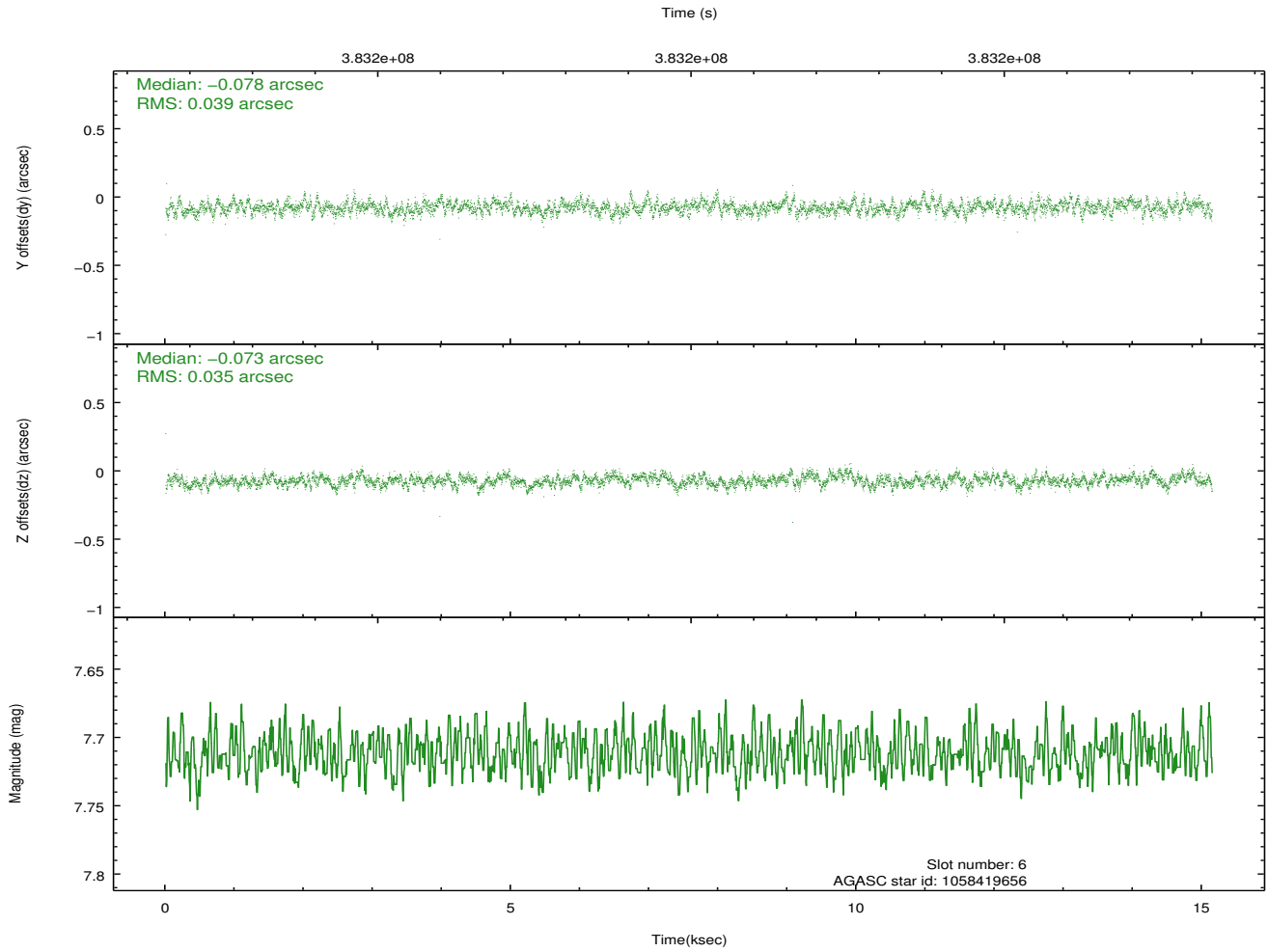
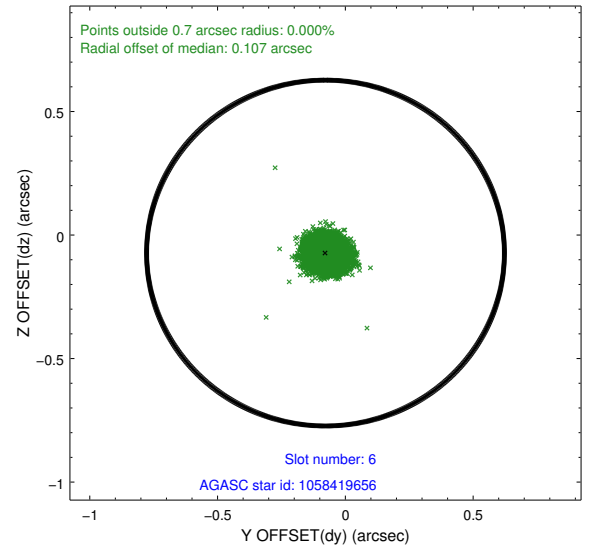
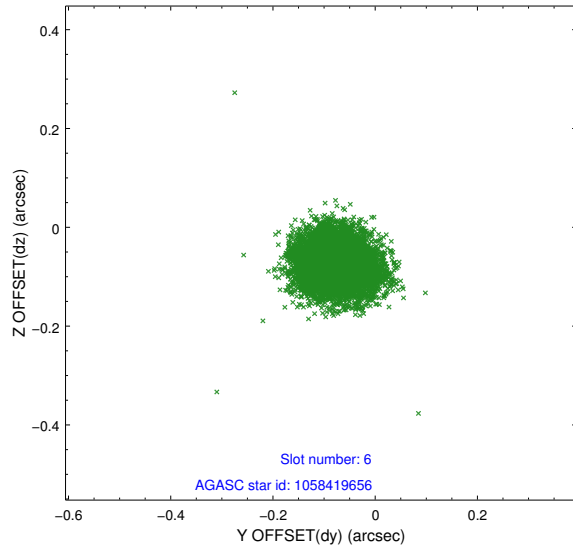
2.4.2 Slot 4



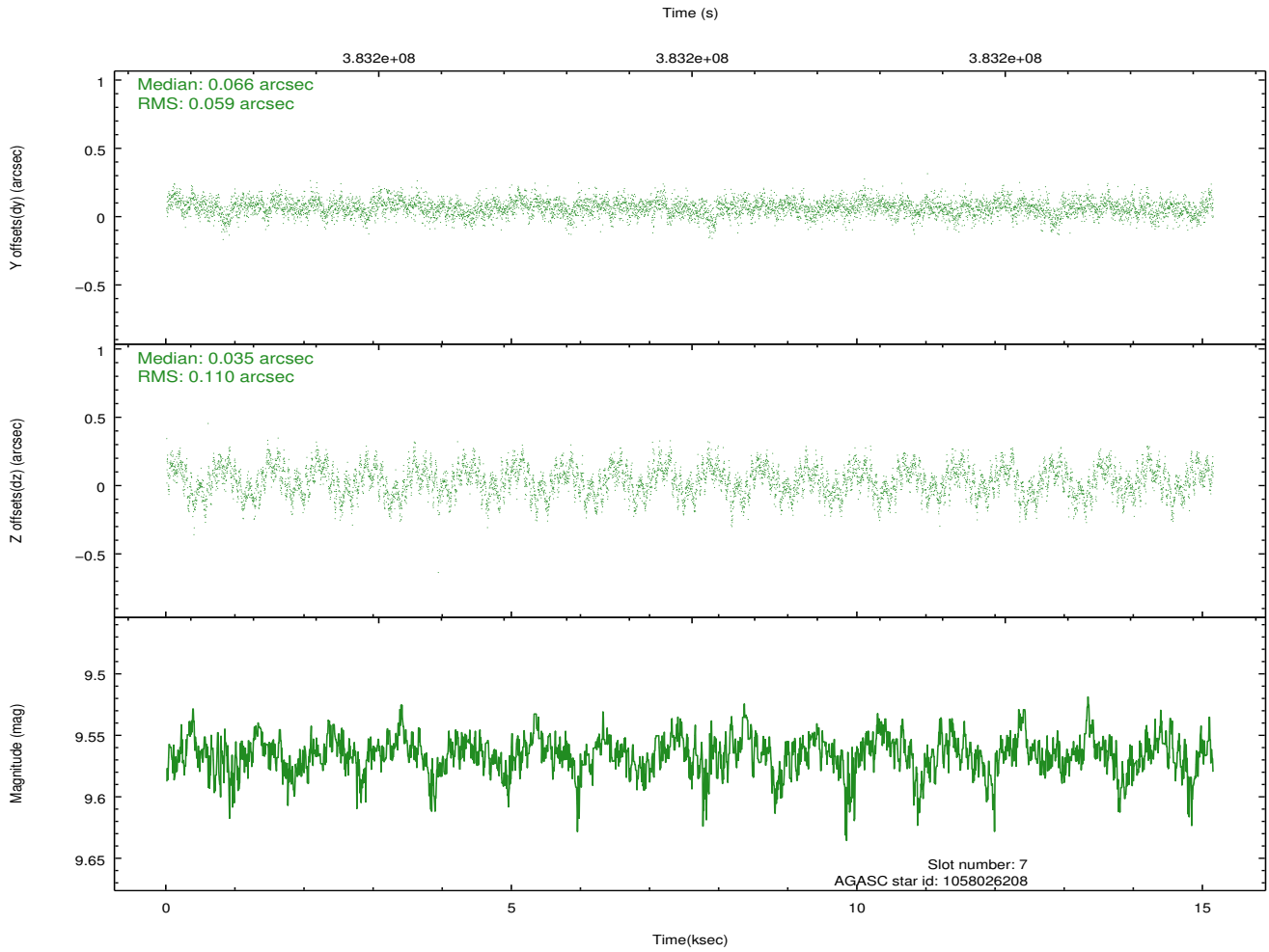
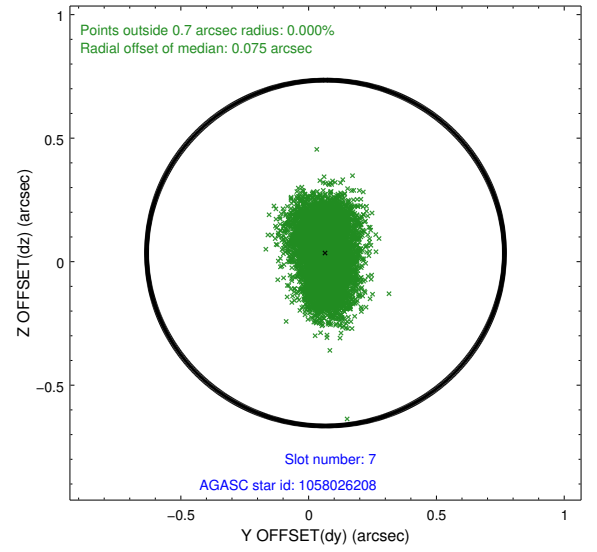
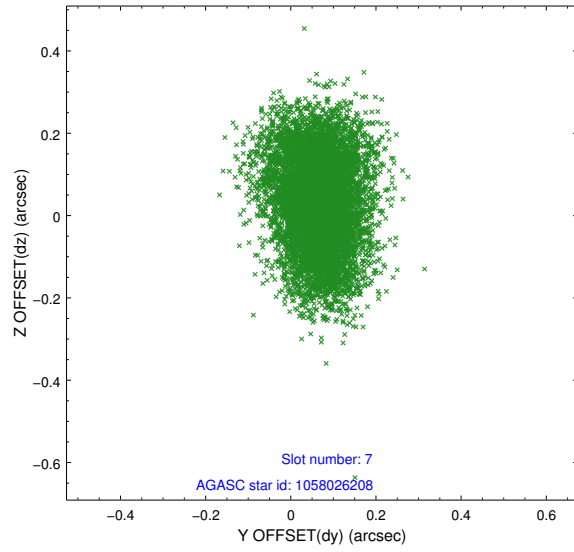
2.4.3 Slot 5



2.4.4 Slot 6

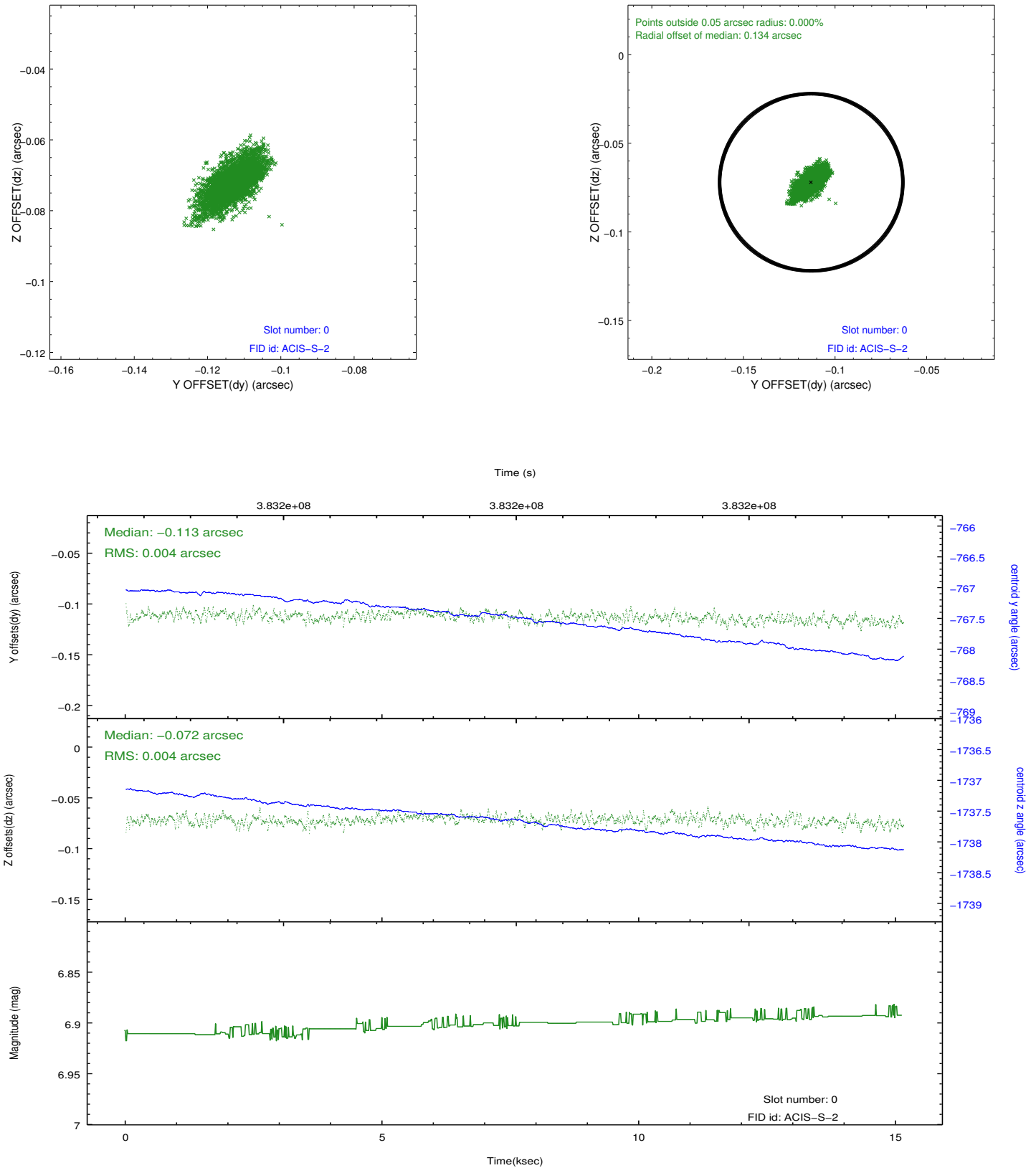


2.4.5 Slot 7

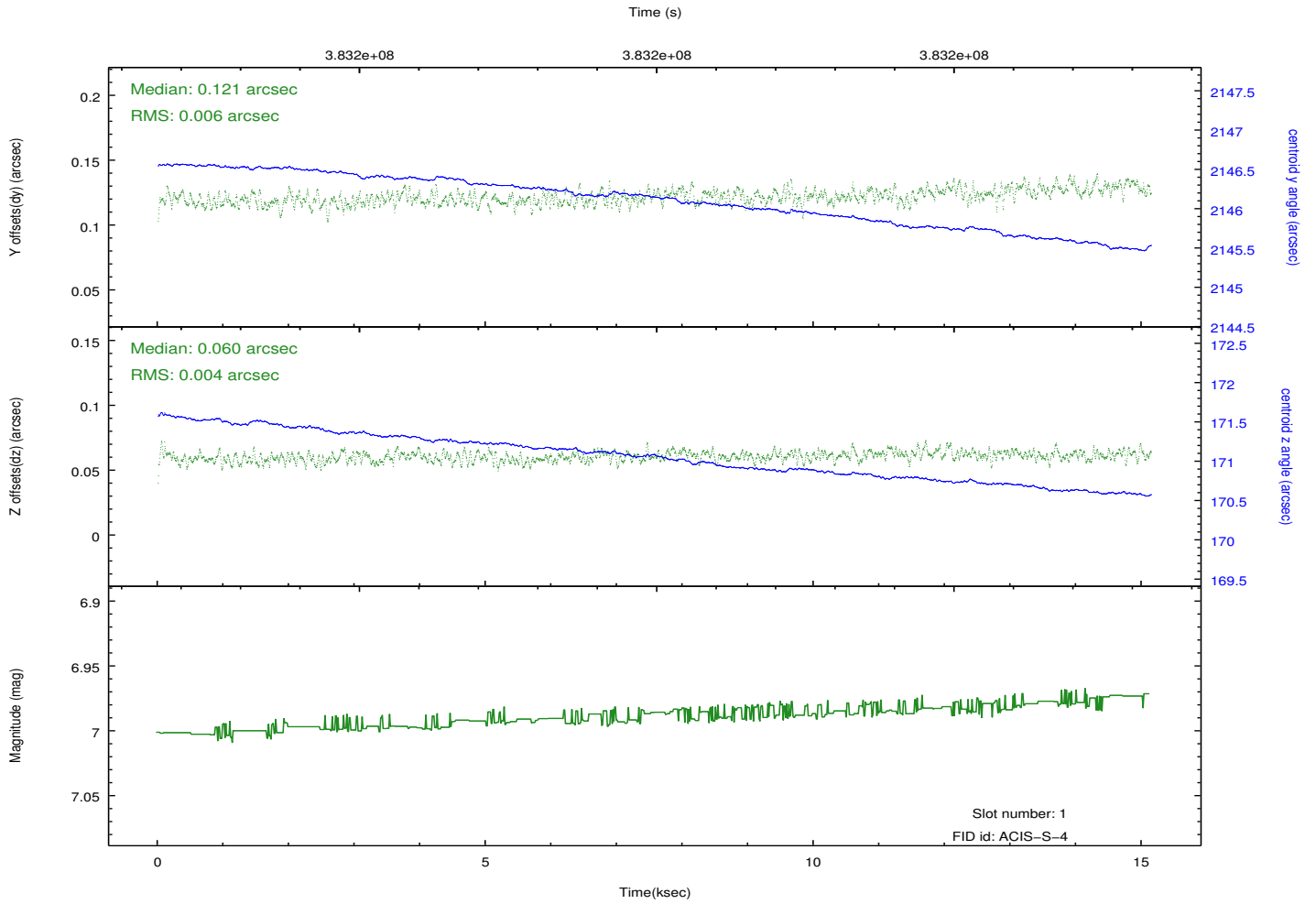
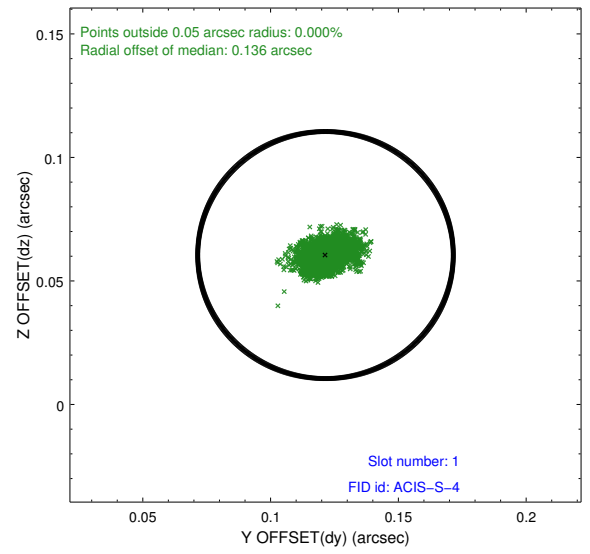
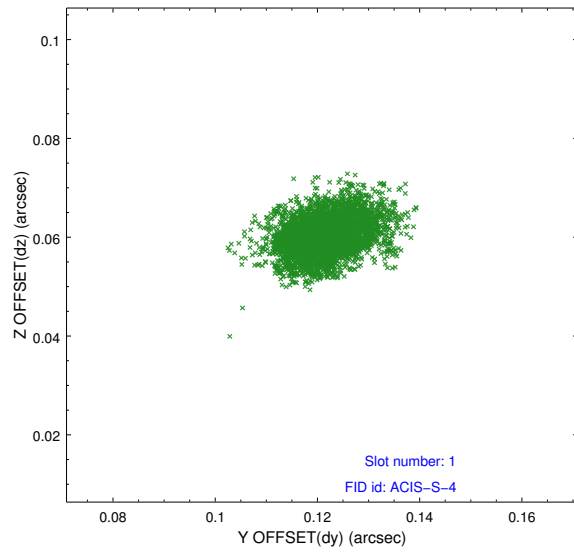


2.5 FID Slots

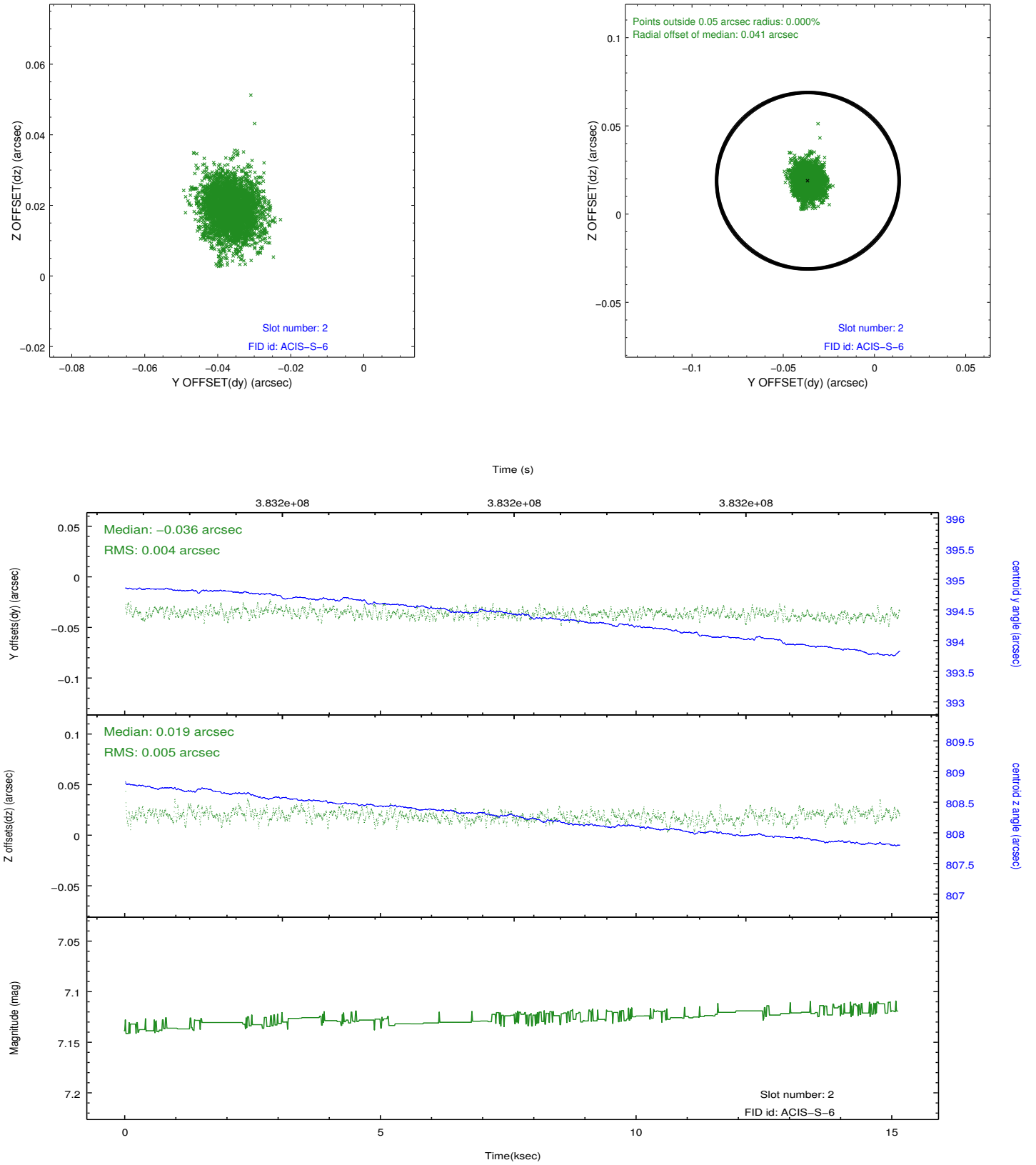
2.5.1 Slot 0



2.5.2 Slot 1



2.5.3 Slot 2



A Summary

A.1 Status

V&V Scientist	Beth Sundheim
V&V Date (YYYY-MM-DD)	2012.06.27
V&V Edition	1
V&V Disposition and Status	OK
V&V Charge Time	15.140400116444

A.2 Comments