

V&V Reference Report

L2 ASCDS Version : 8.4.5

Observation 11764 - L2 Version 2
Chandra X-Ray Center

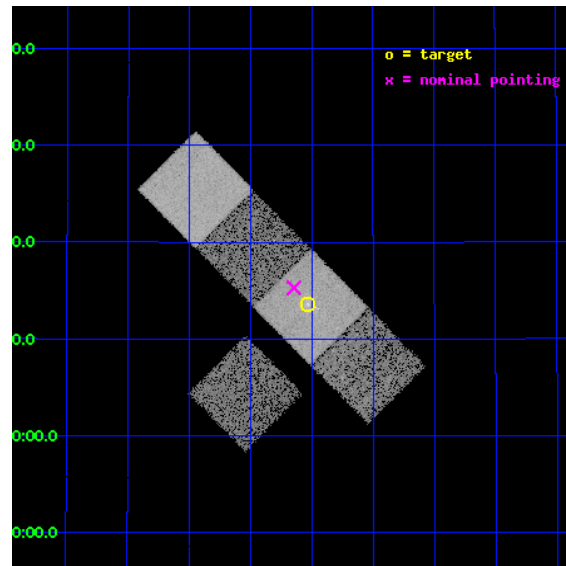
L2 Processing Date : Jun 18 2012

Contents

1	Front	2
2	OBI	3
2.1	OBI	3
2.1.1	Images	3
2.1.2	Bias	3
2.1.3	Parameters	4
2.1.4	Events	4
2.2	Compared Parameters	5
2.3	Aspect	6
2.4	Star Slots	9
2.4.1	Slot 3	9
2.4.2	Slot 4	10
2.4.3	Slot 5	11
2.4.4	Slot 6	12
2.4.5	Slot 7	13
2.5	FID Slots	14
2.5.1	Slot 0	14
2.5.2	Slot 1	15
2.5.3	Slot 2	16
A	Summary	17
A.1	Status	17
A.2	Comments	17

1 Front

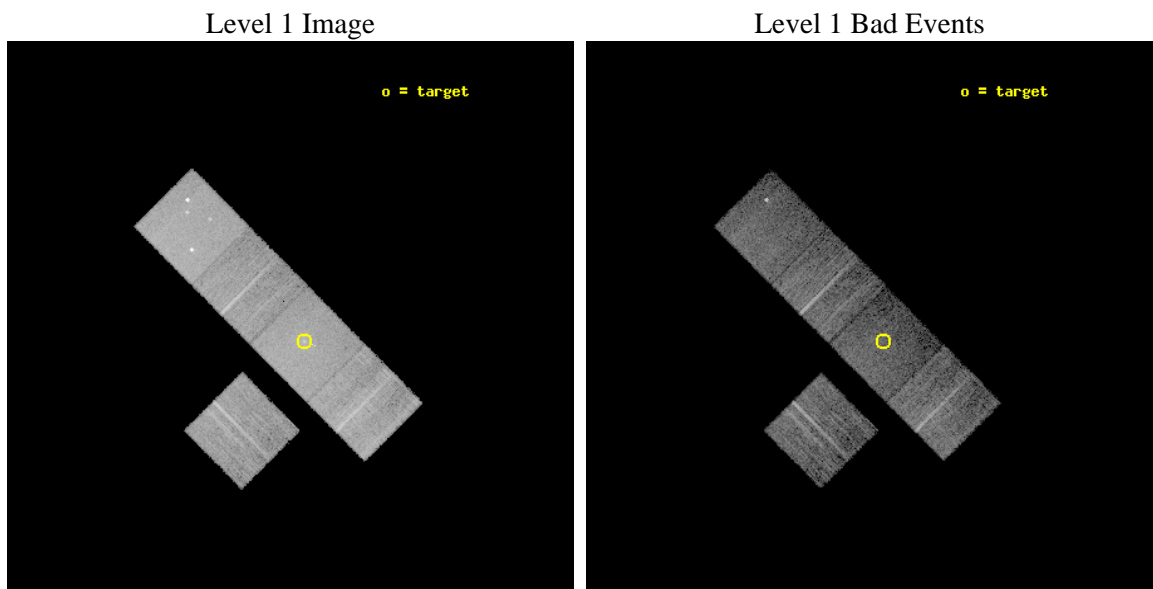
seq_num	800904	Sequence number
obs_id	11764	Observation id
title	The X-Ray, SZ, and Optical Scaling Relations of Massive Galaxy Clusters	Proposal title
observer	Dr. Eli Rykoff	Principal investigator
object	A1961	Source name
dtcycle	0	
cycle	P	events from which exps? Prim/Second/Both
ra_targ	221.1325	Observer's specified target RA [deg]
dec_targ	31.226667	Observer's specified target Dec [deg]
ra_nom	221.16138422274	Nominal RA [deg]
dec_nom	31.254954908394	Nominal Dec [deg]
roll_nom	45.157627493313	Nominal Roll [deg]
revision	2	Processing version of data
ontime	6978.100053668	Sum of GTIs [s]
livetime	6886.9260392643	Livetime [s]
ontime3	6978.100053668	Sum of GTIs [s]
ontime5	6978.100053668	Sum of GTIs [s]
ontime6	6974.9590833187	Sum of GTIs [s]
ontime7	6978.100053668	Sum of GTIs [s]
ontime8	6978.100053668	Sum of GTIs [s]
l2events	102298	Number of level 2 events



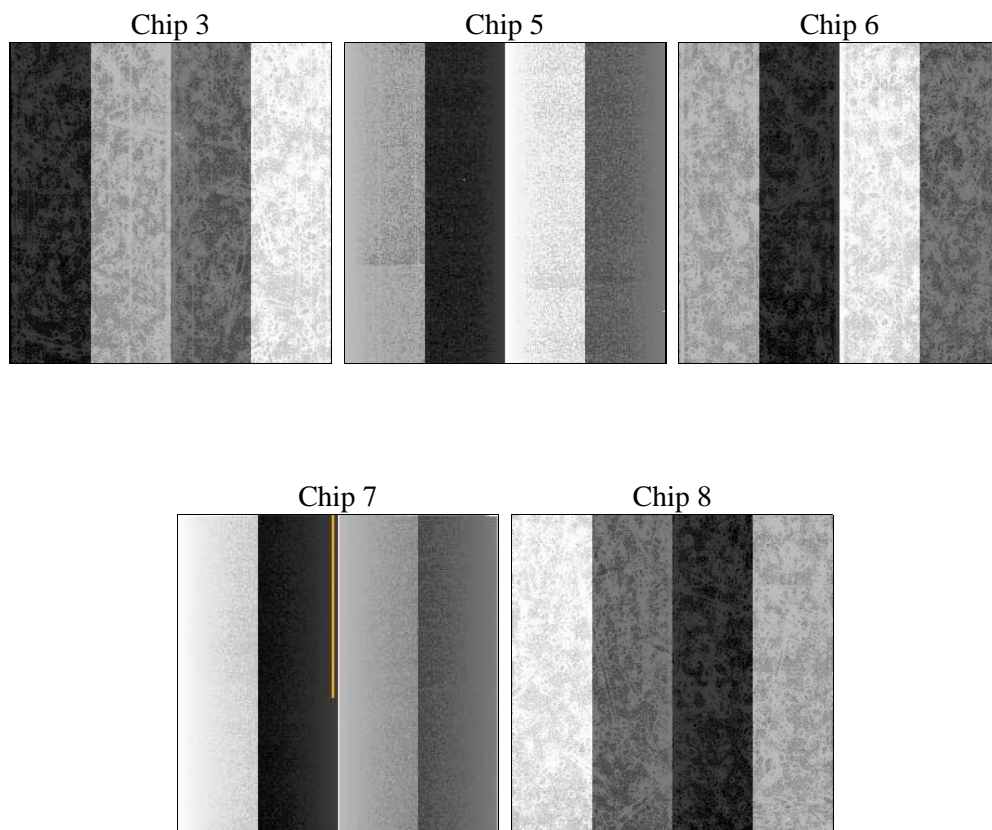
2 OBI

2.1 OBI

2.1.1 Images



2.1.2 Bias



2.1.3 Parameters

obi_num	0	Obi number	sched_exp_time	6840.678000	[s] Scheduled observation exposure time
ascdsver	8.4.5	Processing system revision	ontime	6978.100053668	Sum of GTIs [s]
caldbver	4.4.10	 	ontime3	6978.100053668	Sum of GTIs [s]
date	2012-06-18T07:32:15	Date and time of file creation	ontime5	6978.100053668	Sum of GTIs [s]
revision	2	Processing version of data	ontime6	6974.9590833187	Sum of GTIs [s]
			ontime7	6978.100053668	Sum of GTIs [s]
			ontime8	6978.100053668	Sum of GTIs [s]
			l1events	432039	Number of level 1 events

2.1.4 Events

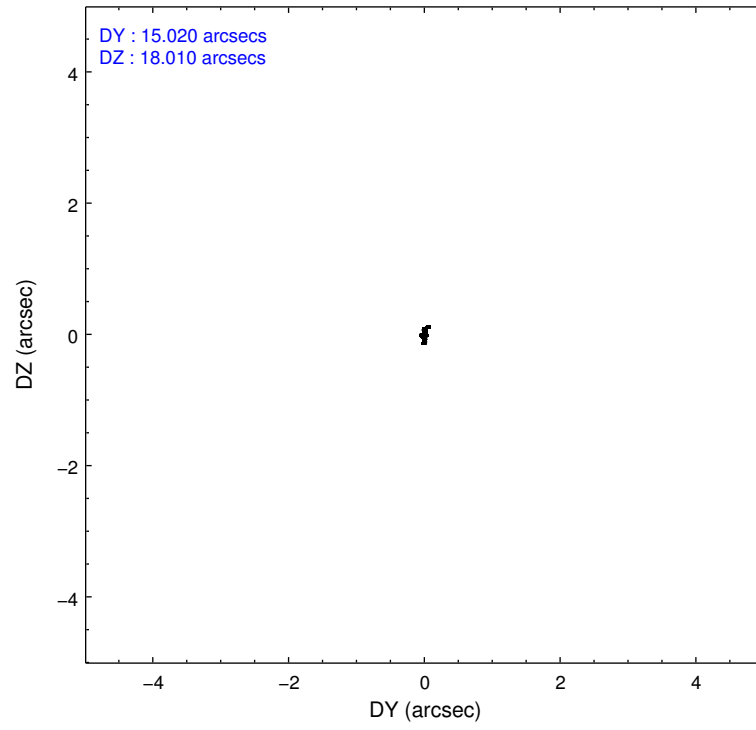
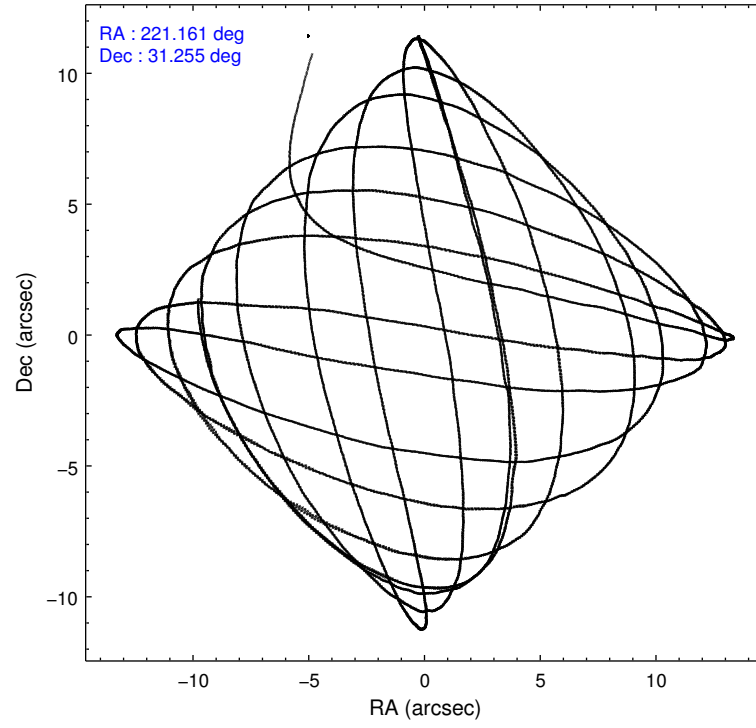
	ccd 3	ccd 5	ccd 6	ccd 7	ccd 8
level 1 events	69780	108811	72347	88654	92447
rejected events	62638	60610	64393	50787	70858
rejected %	89%	55%	89%	57%	76%

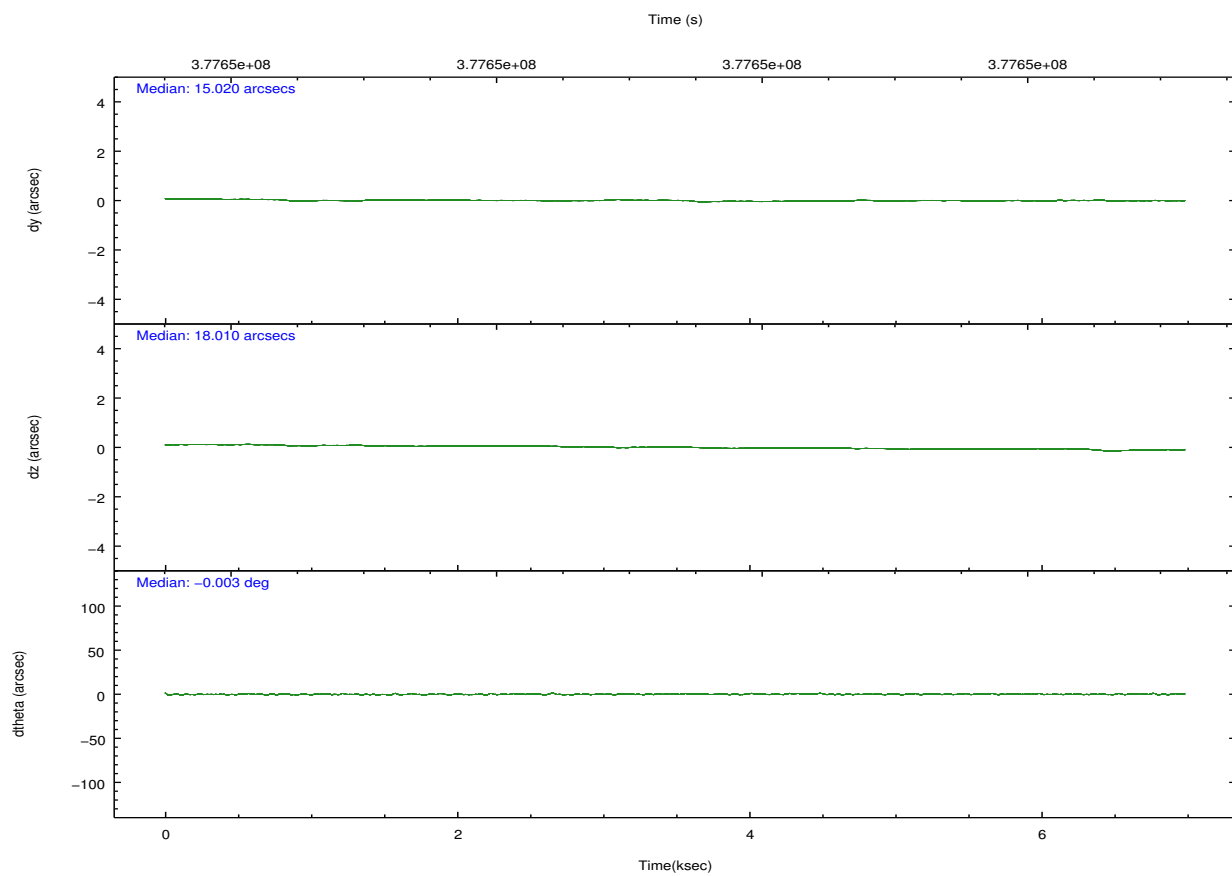
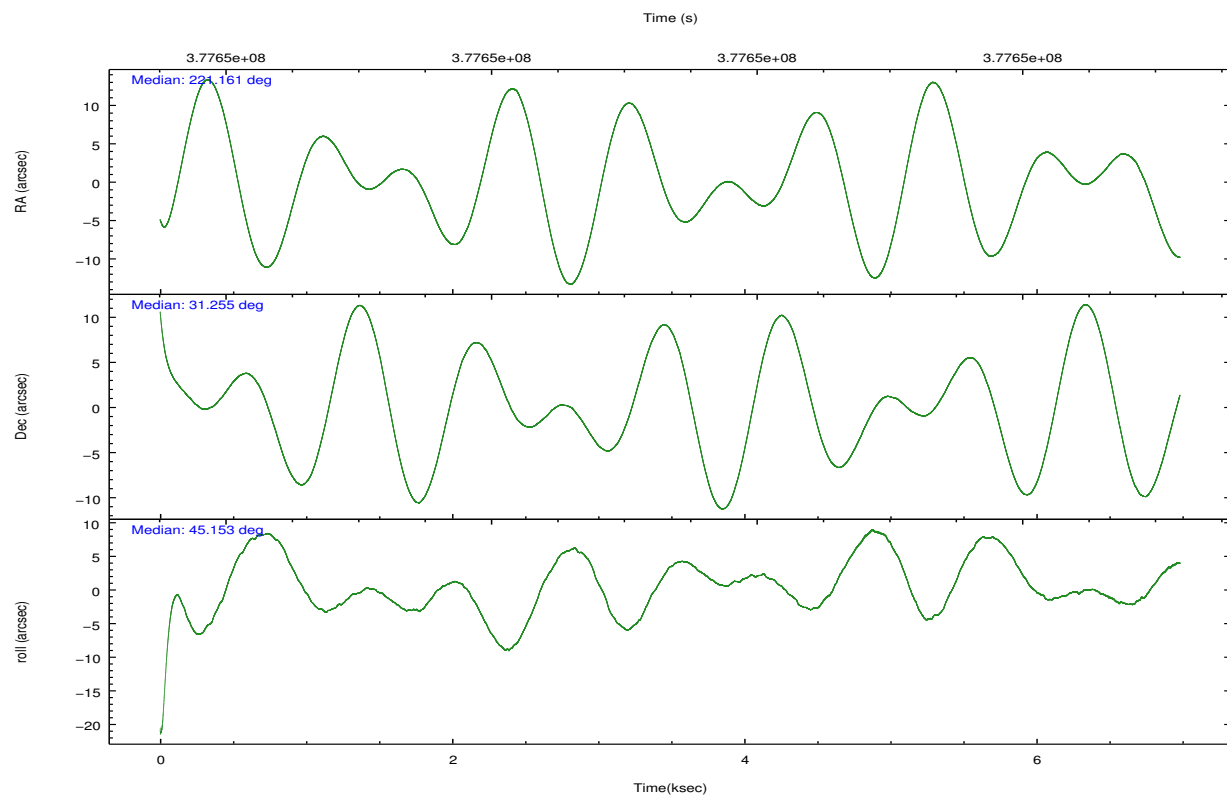
	ccd 3	ccd 5	ccd 6	ccd 7	ccd 8
grade 0 events	3460	6348	3866	4570	8580
	4%	5%	5%	5%	9%
grade 1 events	50	234	50	111	81
	0%	0%	0%	0%	0%
grade 2 events	1593	17709	1820	8921	5521
	2%	16%	2%	10%	5%
grade 3 events	801	2179	861	3903	2565
	1%	2%	1%	4%	2%
grade 4 events	873	2063	823	3857	2311
	1%	1%	1%	4%	2%
grade 5 events	2955	8174	2980	8733	4215
	4%	7%	4%	9%	4%
grade 6 events	1435	27852	1768	22226	6164
	2%	25%	2%	25%	6%
grade 7 events	58613	44252	60179	36333	63010
	83%	40%	83%	40%	68%

2.2 Compared Parameters

Parameter	Planned	Actual	Parameter	Planned	Actual
Instrument	ACIS	ACIS	Obspar format version number	7	7
Detector	ACIS-35678	ACIS-35678	Obspar file type	PREDICTED	ACTUAL
Grating	NONE	NONE	Obspar update status	NONE	UPDATED
Data mode	VFAINT	VFAINT	Number of optional ACIS chips dropped	0	0
Observation mode	POINTING	POINTING	On-chip summing requested	N	N
[deg] Pointing RA	221.153587	221.16138422274	Subarray requested	NONE	NONE
[deg] Pointing Dec	31.228435	31.25495490839369	Alternating exposures requested	N	N
[deg] Pointing Roll	45.005087	45.15762749331322	[s] Primary exposure time	0.000000	3.1
[mm] SIM focus pos	-0.684267	-0.6828225247311905			
[mm] SIM defocus	0	0.001444936568705701			
[mm] SIM translation stage pos	-190.132523	-190.1425803651734			
[mm] SIM translation stage offset	0	0.01005778216563158			
[s] Observation start time (MET)	377645994.184000	377644417.89629			
Observation start date	2009-12-19T21:38:48	2009-12-19T21:13:37			
[s] Observation end time (MET)	377652835.184000	377653061.72173			
Observation end date	2009-12-19T23:32:49	2009-12-19T23:37:41			
Read mode	TIMED	TIMED			

2.3 Aspect



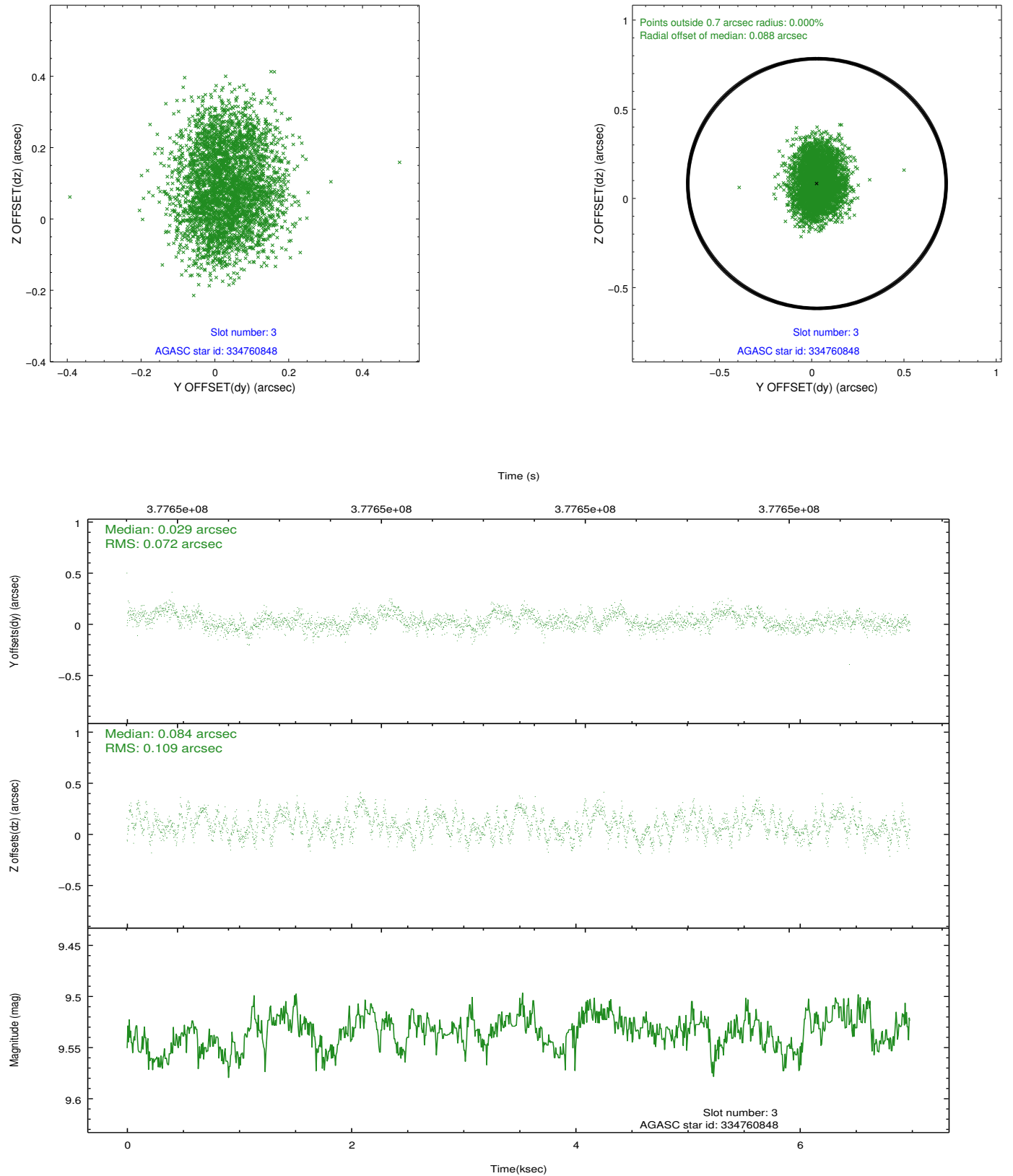


Slot Statistics

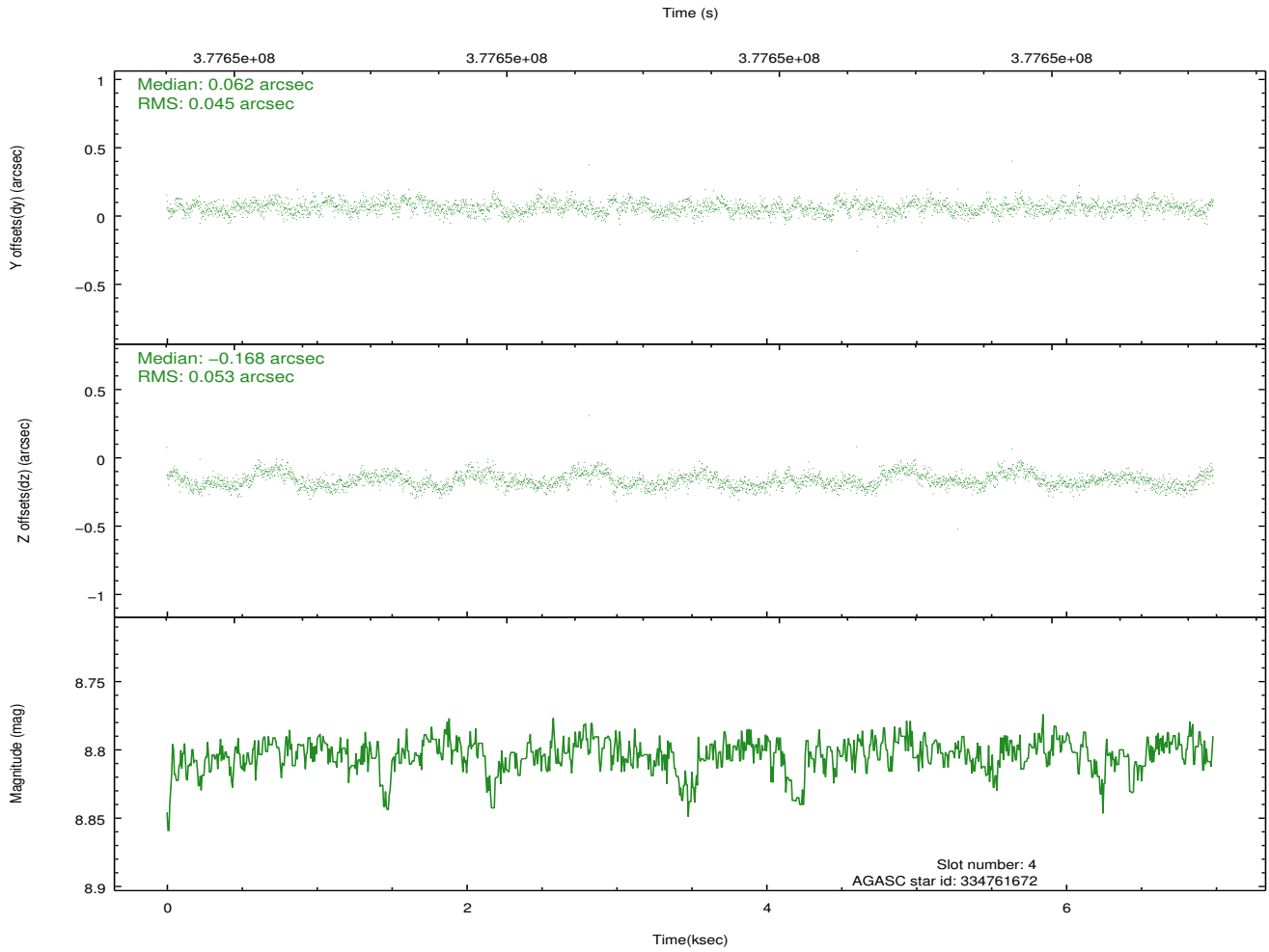
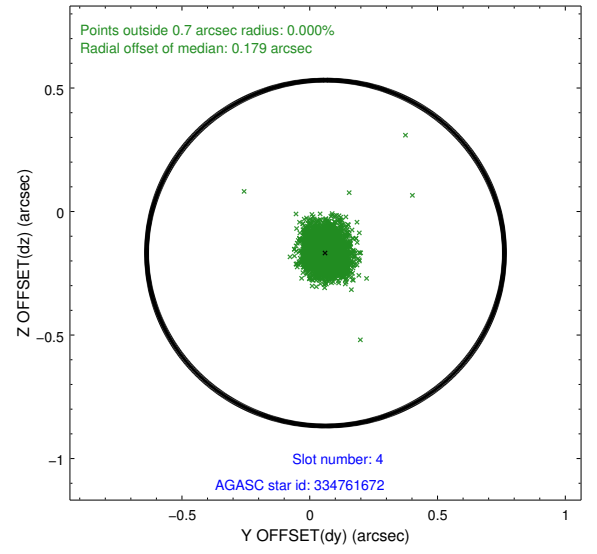
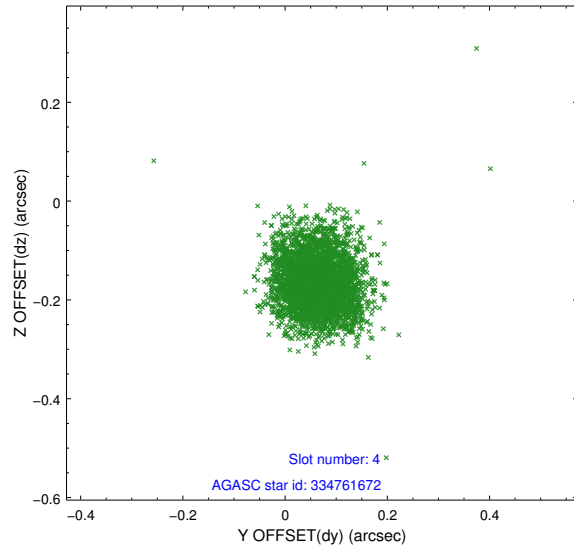
slot	status	id	mag	n_pts	med_dy	med_dz	dr1	dr2	ra	dec	mean_y	mean_z
0	FID	ACIS-S-4	6.95	1703	0.118	0.021	0.006	0.011	0.000000	0.000000	2145.47	169.20
1	FID	ACIS-S-5	6.98	1702	-0.148	0.016	0.005	0.009	0.000000	0.000000	-1819.92	162.87
2	FID	ACIS-S-6	7.08	1702	0.001	-0.022	0.007	0.011	0.000000	0.000000	392.73	806.51
3	GUIDE	334760848	9.53	3404	0.029	0.084	0.143	0.220	221.269934	30.534327	-1511.39	-2021.57
4	GUIDE	334761672	8.80	3405	0.062	-0.168	0.073	0.118	220.547330	31.136723	-1551.26	1090.65
5	GUIDE	334763096	9.20	3396	0.249	0.168	0.096	0.171	220.835169	30.710358	-2014.28	-620.23
6	GUIDE	334767488	9.73	3402	-0.121	0.073	0.116	0.186	221.634732	31.156676	867.24	-1228.41
7	GUIDE	334761608	7.94	3406	-0.229	-0.155	0.085	0.132	221.194072	32.129687	2381.85	2206.56

2.4 Star Slots

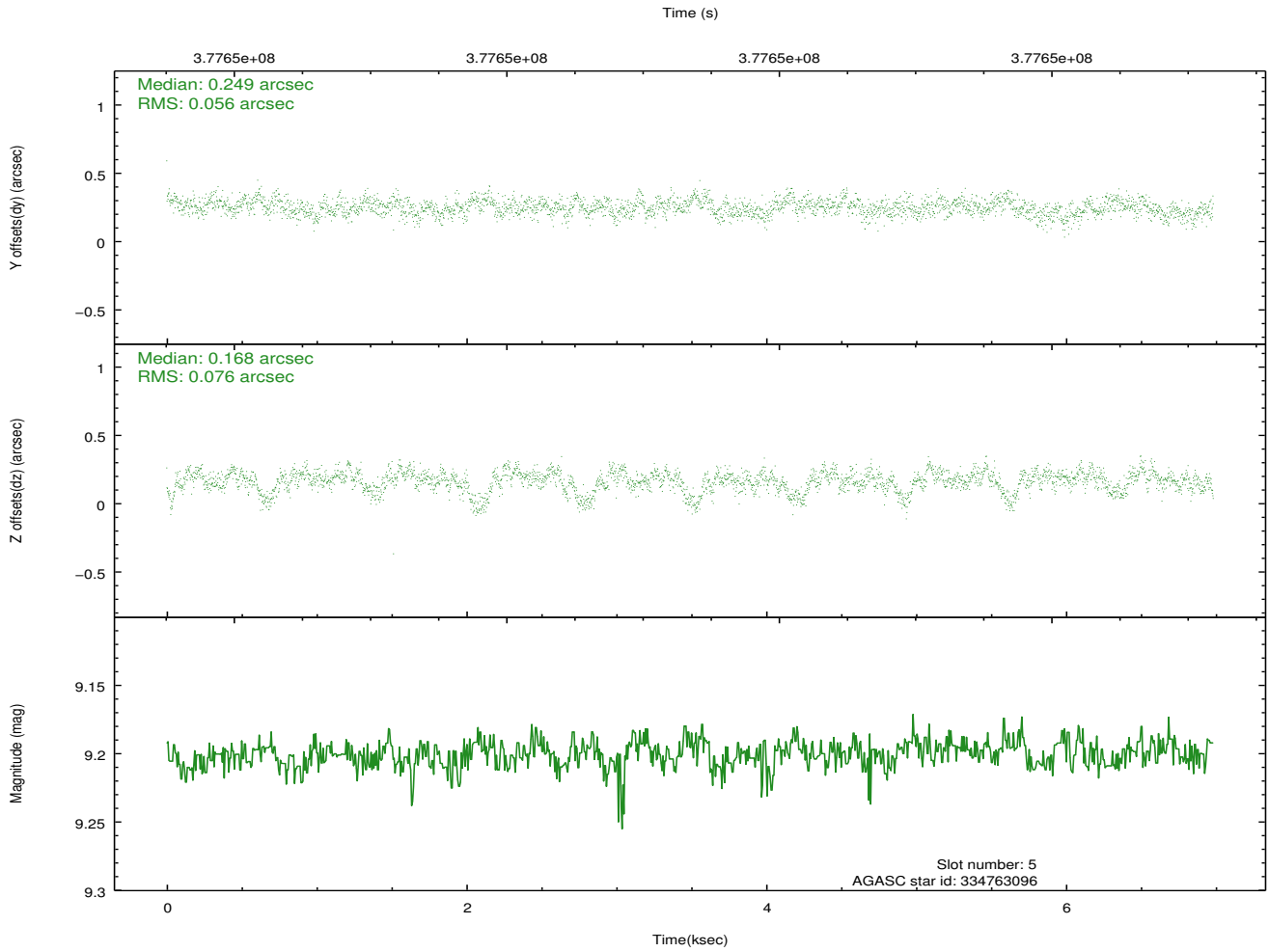
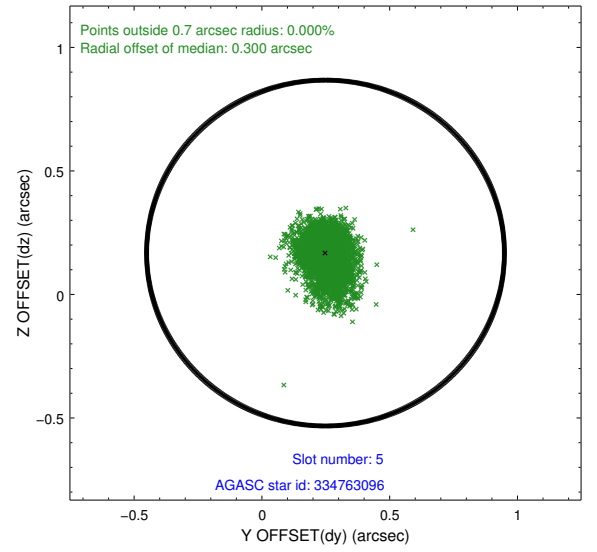
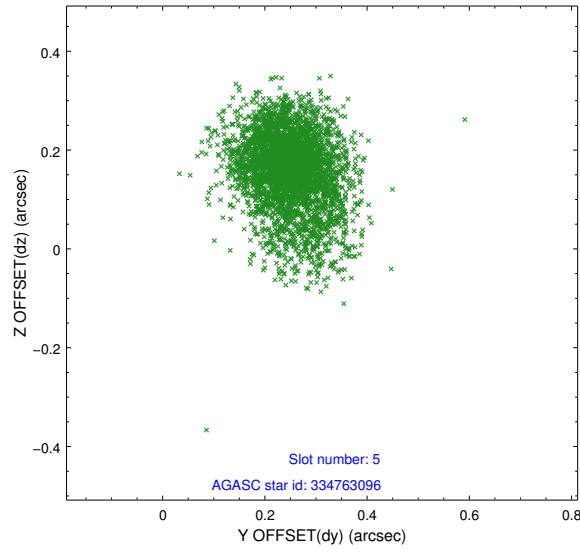
2.4.1 Slot 3



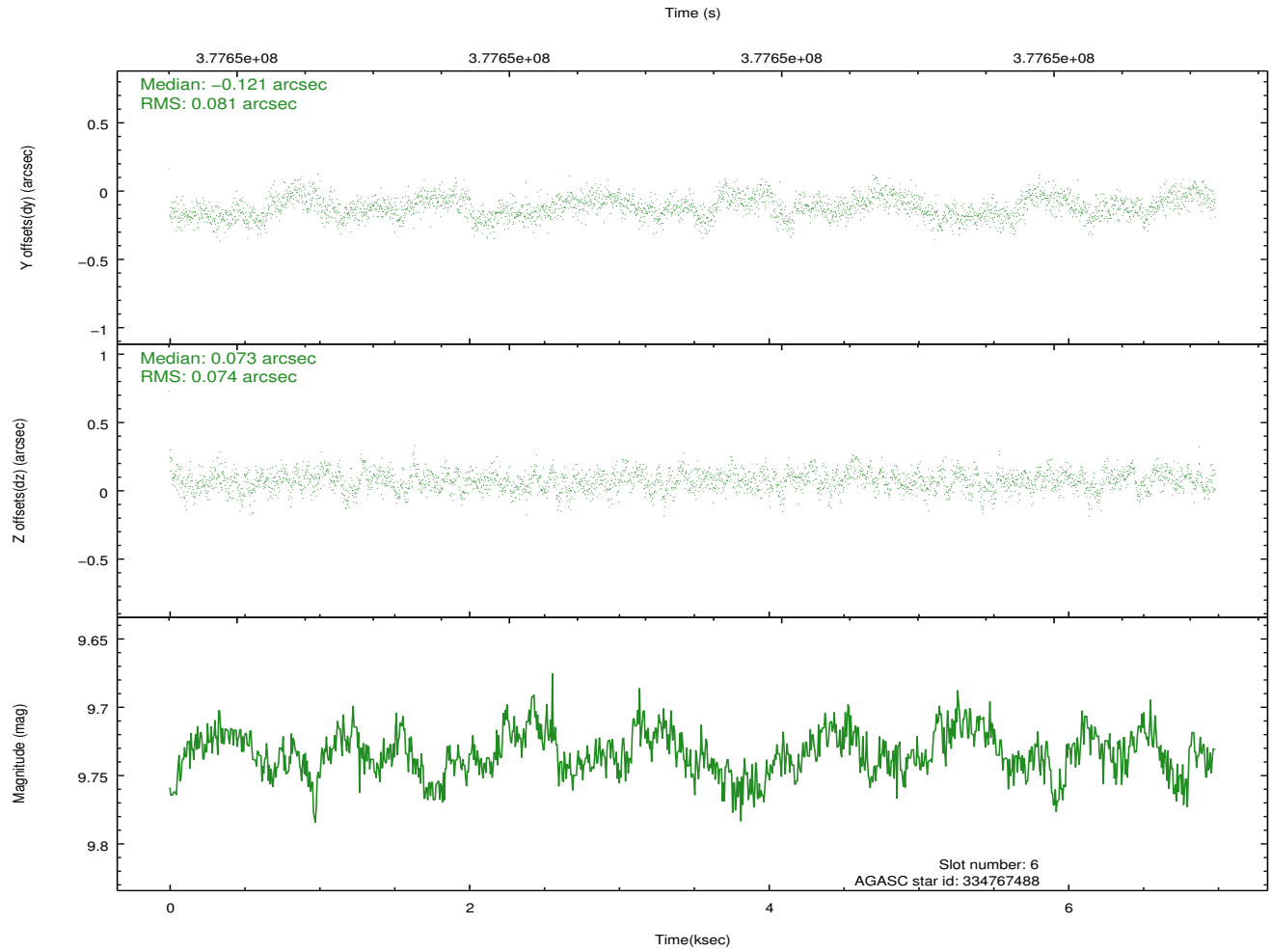
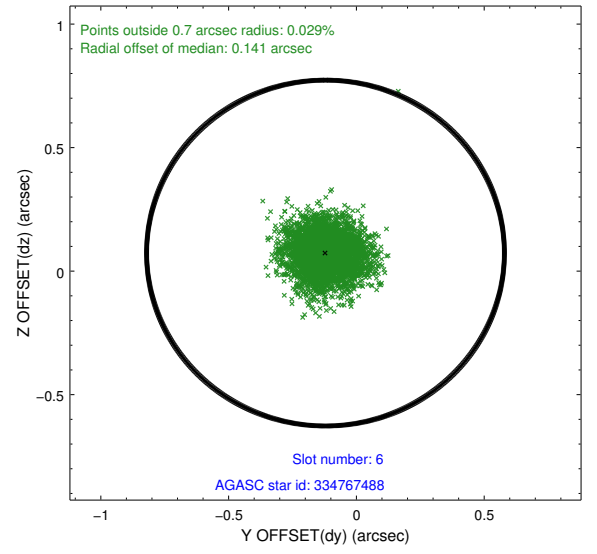
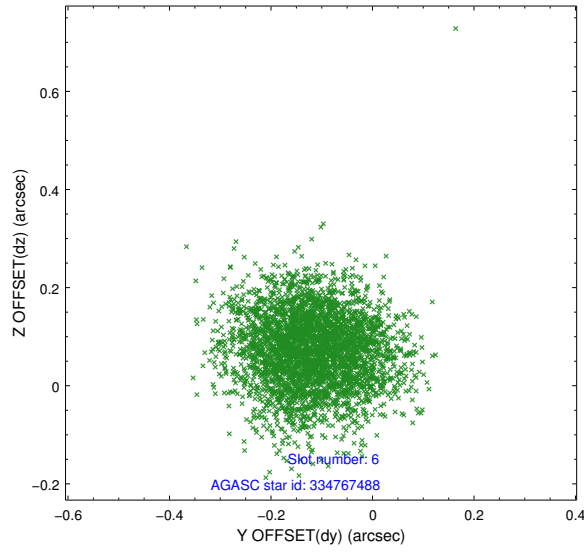
2.4.2 Slot 4



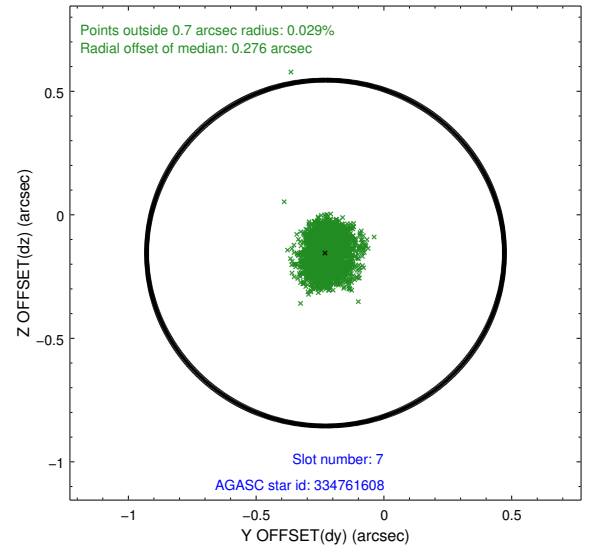
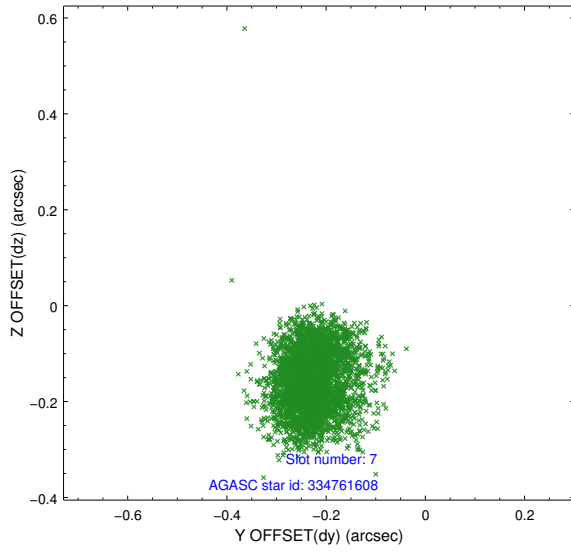
2.4.3 Slot 5



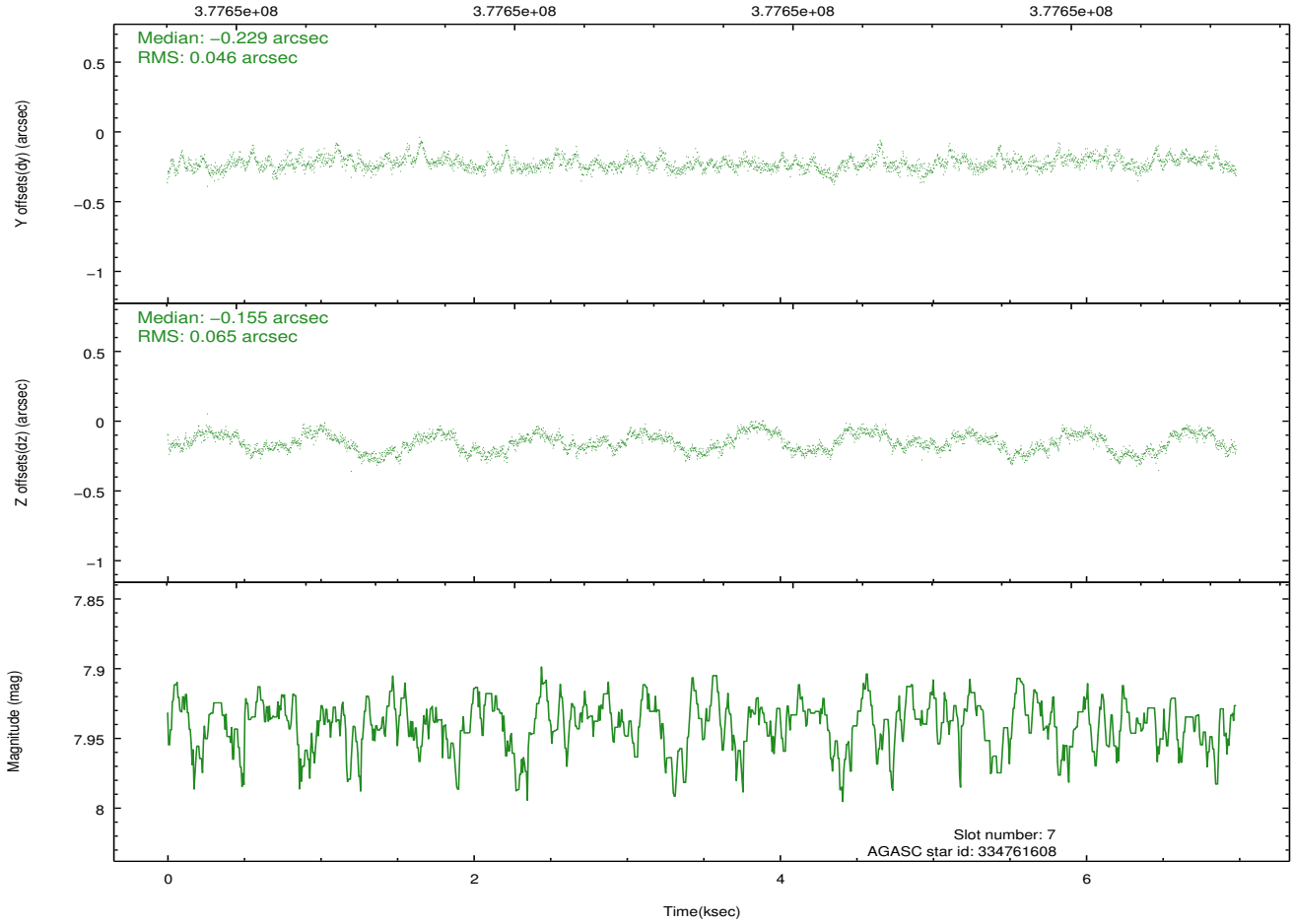
2.4.4 Slot 6



2.4.5 Slot 7

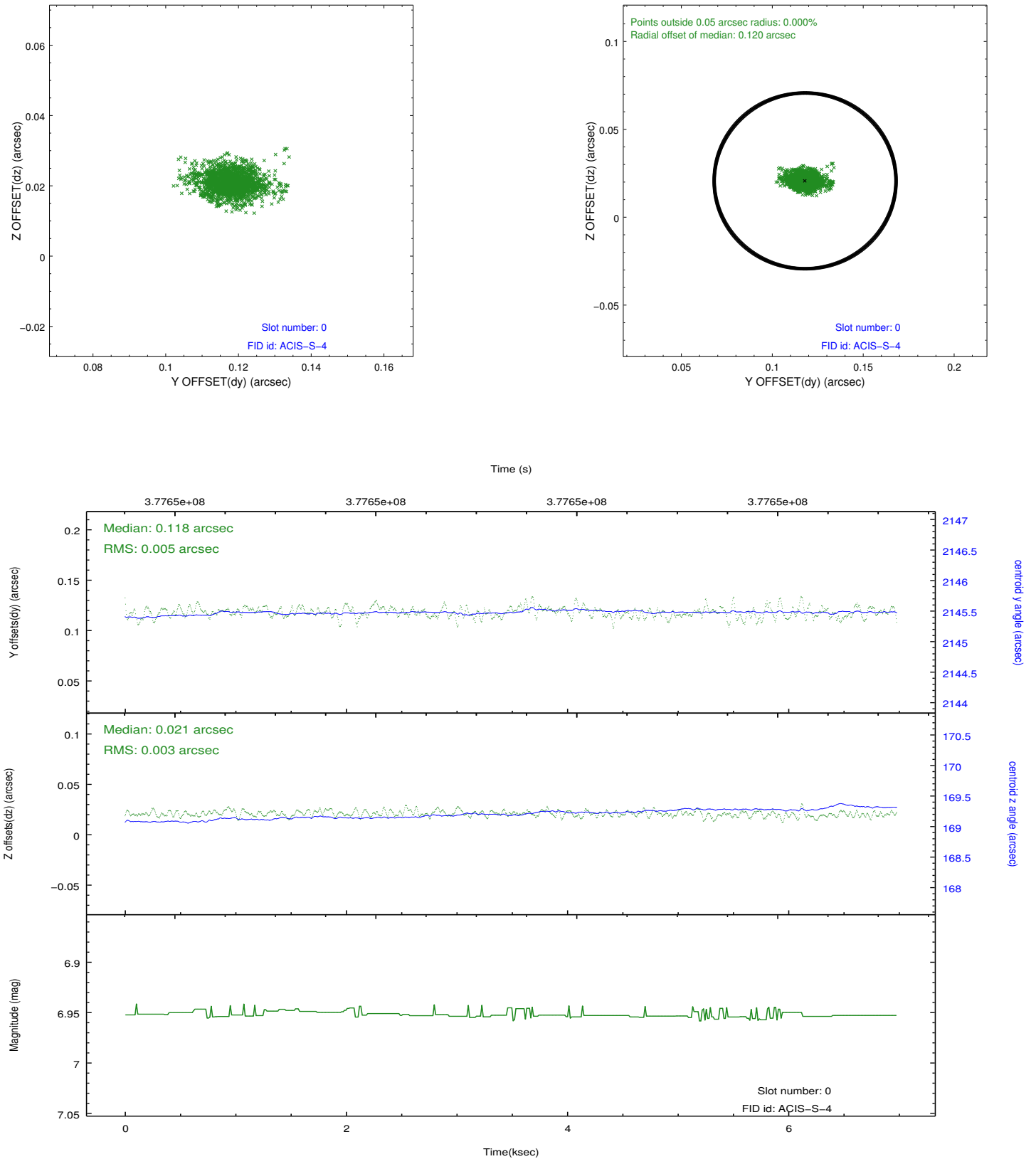


Time (s)

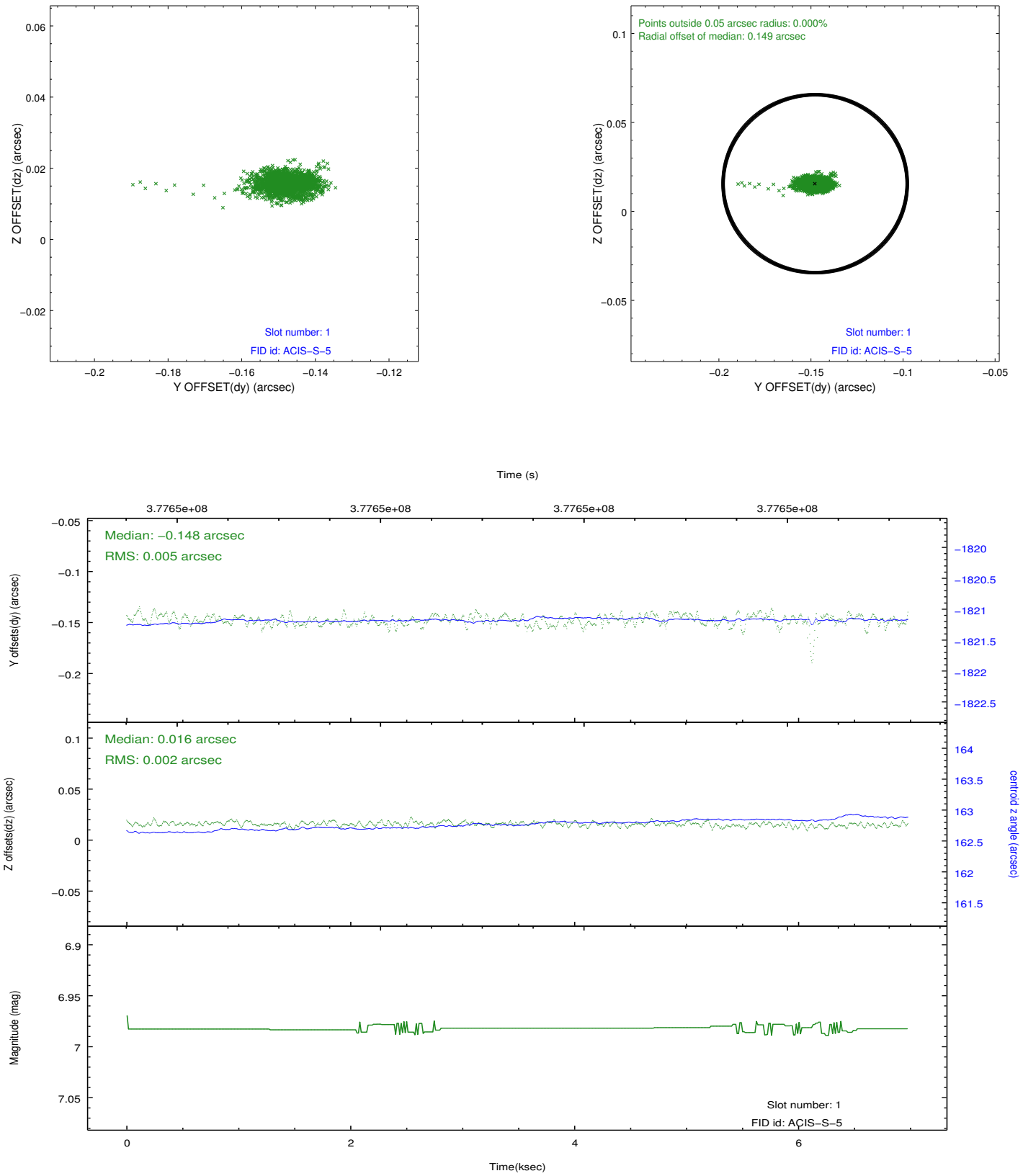


2.5 FID Slots

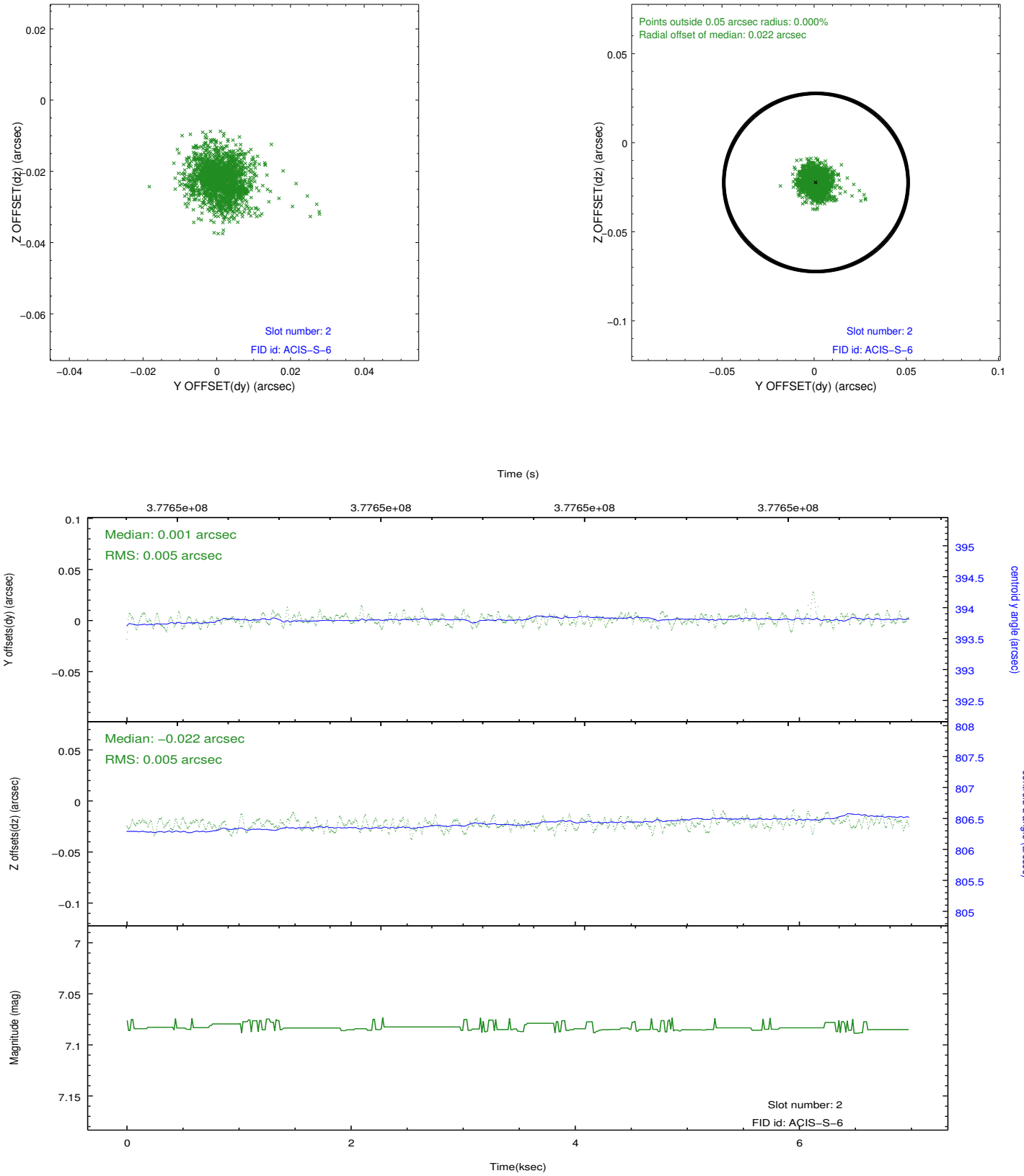
2.5.1 Slot 0



2.5.2 Slot 1



2.5.3 Slot 2



A Summary

A.1 Status

V&V Scientist	Jen Lauer
V&V Date (YYYY-MM-DD)	2012.06.21
V&V Edition	1
V&V Disposition and Status	OK
V&V Charge Time	6.978100053668

A.2 Comments