

V&V Reference Report

L2 ASCDS Version : 8.4.5

Observation 11684 - L2 Version 2
Chandra X-Ray Center

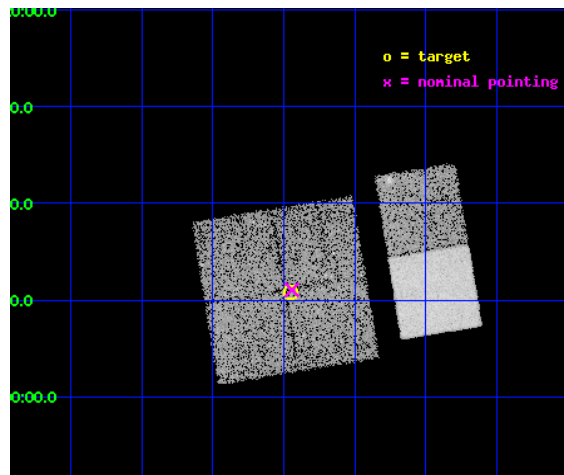
L2 Processing Date : Jun 13 2012

Contents

1	Front	2
2	OBI	3
2.1	OBI	3
2.1.1	Images	3
2.1.2	Bias	3
2.1.3	Parameters	4
2.1.4	Events	4
2.2	Compared Parameters	5
2.3	Aspect	6
2.4	Star Slots	9
2.4.1	Slot 3	9
2.4.2	Slot 4	10
2.4.3	Slot 5	11
2.4.4	Slot 6	12
2.4.5	Slot 7	13
2.5	FID Slots	14
2.5.1	Slot 0	14
2.5.2	Slot 1	15
2.5.3	Slot 2	16
A	Summary	17
A.1	Status	17
A.2	Comments	17

1 Front

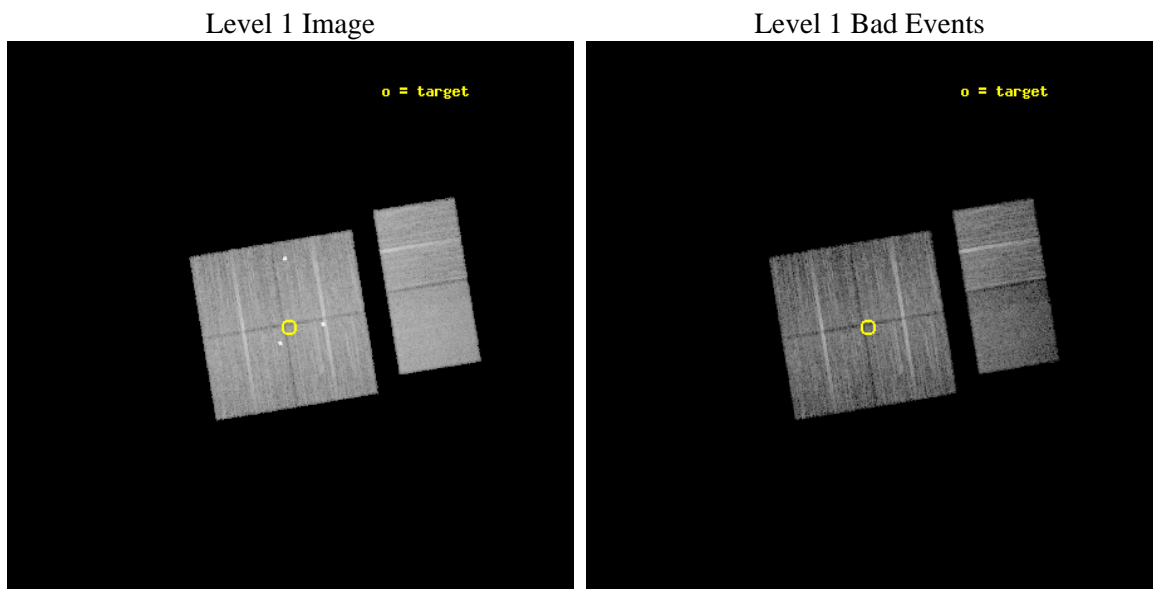
seq_num	702270	Sequence number
obs_id	11684	Observation id
title	Determining the Nature of the Faintest Hard X-ray Selected AGN with Chandra	Proposal title
observer	Mr. Shanil Virani	Principal investigator
object	IGRJ02088-0750	Source name
dtcycle	0	
cycle	P	events from which exps? Prim/Second/Both
ra_targ	32.2375	Observer's specified target RA [deg]
dec_targ	-7.820556	Observer's specified target Dec [deg]
ra_nom	32.235768336654	Nominal RA [deg]
dec_nom	-7.8158657806995	Nominal Dec [deg]
roll_nom	80.599935856023	Nominal Roll [deg]
revision	2	Processing version of data
ontime	10175.999962151	Sum of GTIs [s]
livetime	10047.145323379	Livetime [s]
ontime0	10175.999962151	Sum of GTIs [s]
ontime1	10166.276851177	Sum of GTIs [s]
ontime2	10175.999962151	Sum of GTIs [s]
ontime3	10175.999962151	Sum of GTIs [s]
ontime6	10175.999962151	Sum of GTIs [s]
ontime7	10175.999962151	Sum of GTIs [s]
l2events	81924	Number of level 2 events



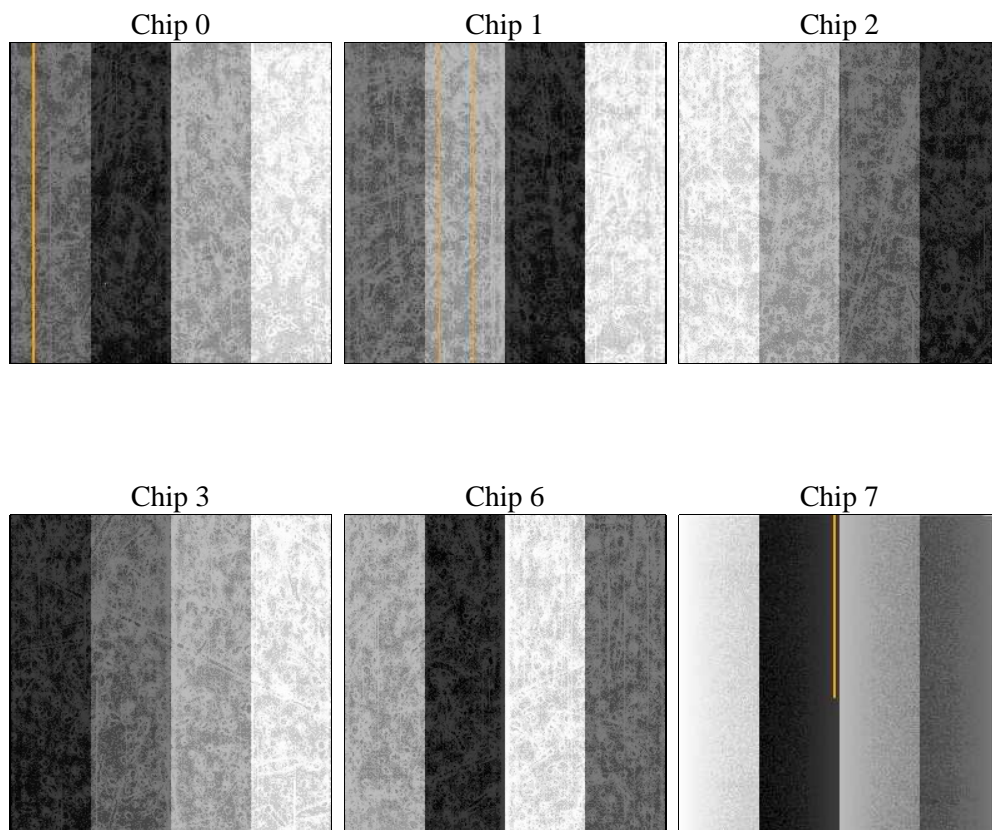
2 OBI

2.1 OBI

2.1.1 Images



2.1.2 Bias



2.1.3 Parameters

obi_num	0	Obi number	sched_exp_time	10000.000000	[s] Scheduled observation exposure time
ascdsver	8.4.5	Processing system revision	ontime	10175.999962151	Sum of GTIs [s]
caldsver	4.4.10	 	ontime0	10175.999962151	Sum of GTIs [s]
date	2012-06-13T19:11:36	Date and time of file creation	ontime1	10166.276851177	Sum of GTIs [s]
revision	2	Processing version of data	ontime2	10175.999962151	Sum of GTIs [s]
			ontime3	10175.999962151	Sum of GTIs [s]
			ontime6	10175.999962151	Sum of GTIs [s]
			ontime7	10175.999962151	Sum of GTIs [s]
			l1events	586904	Number of level 1 events

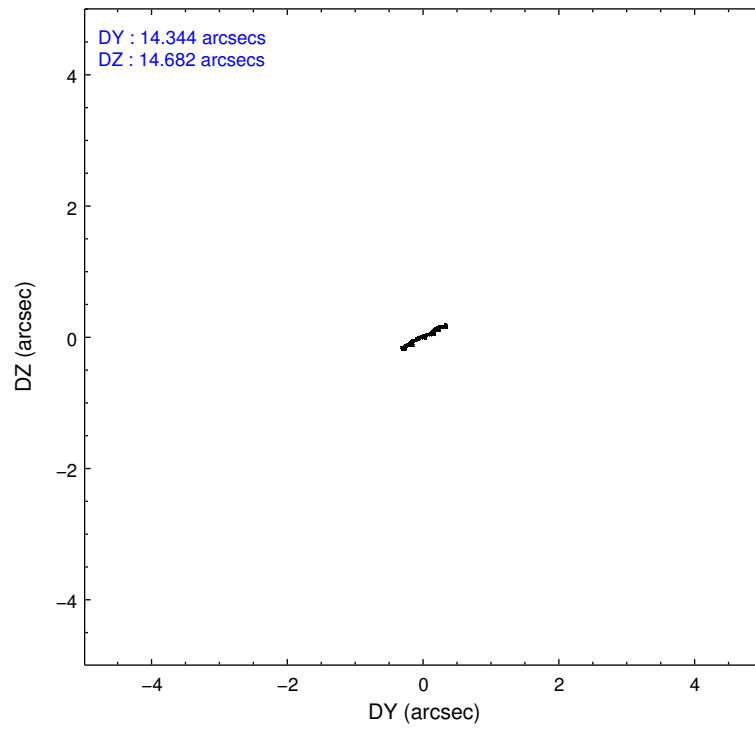
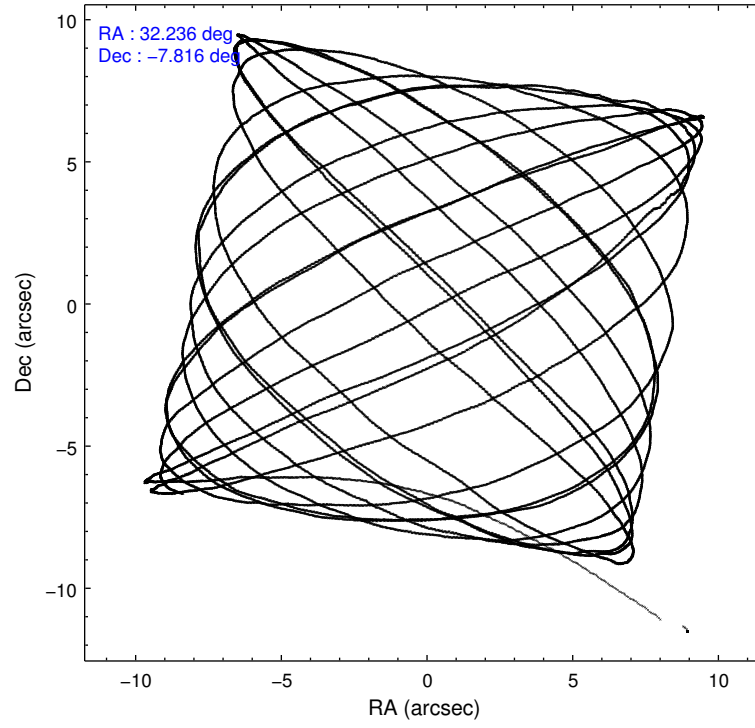
2.1.4 Events

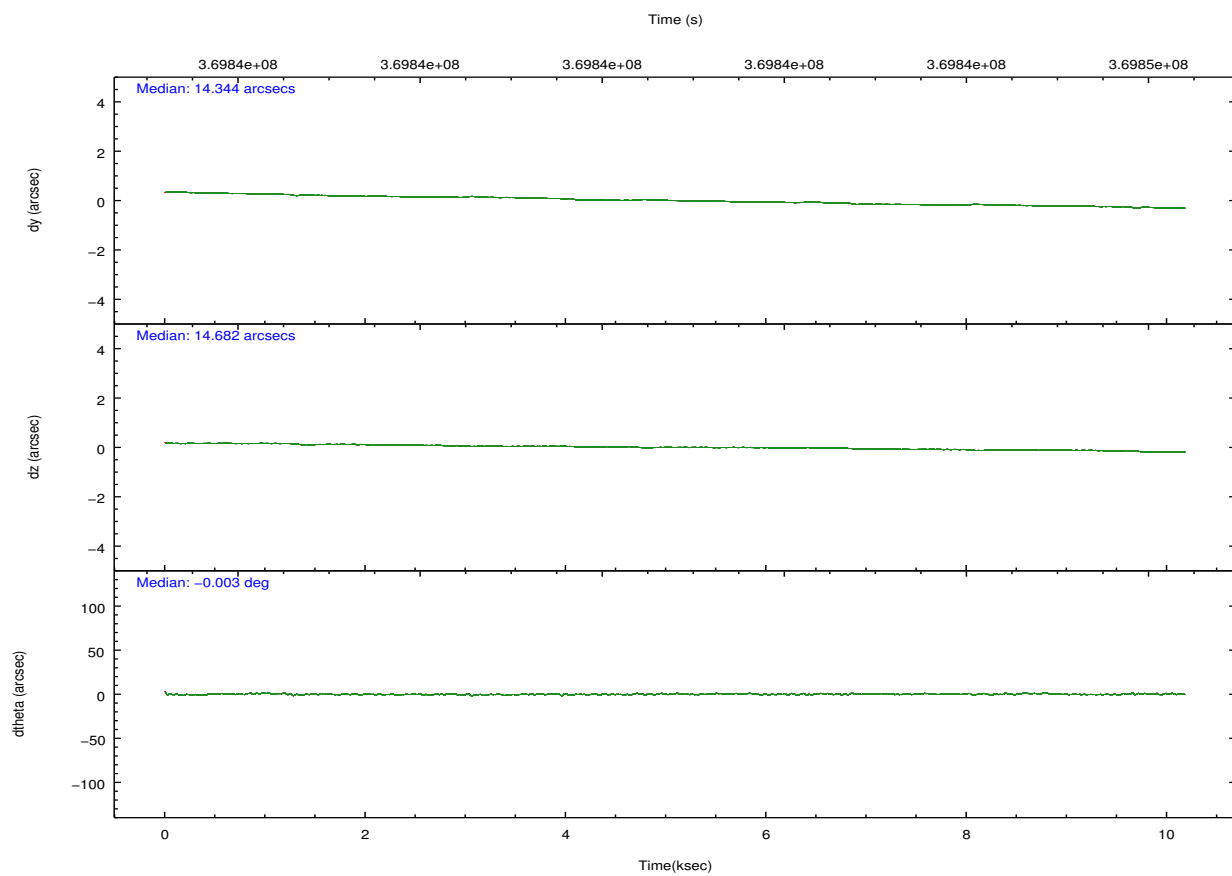
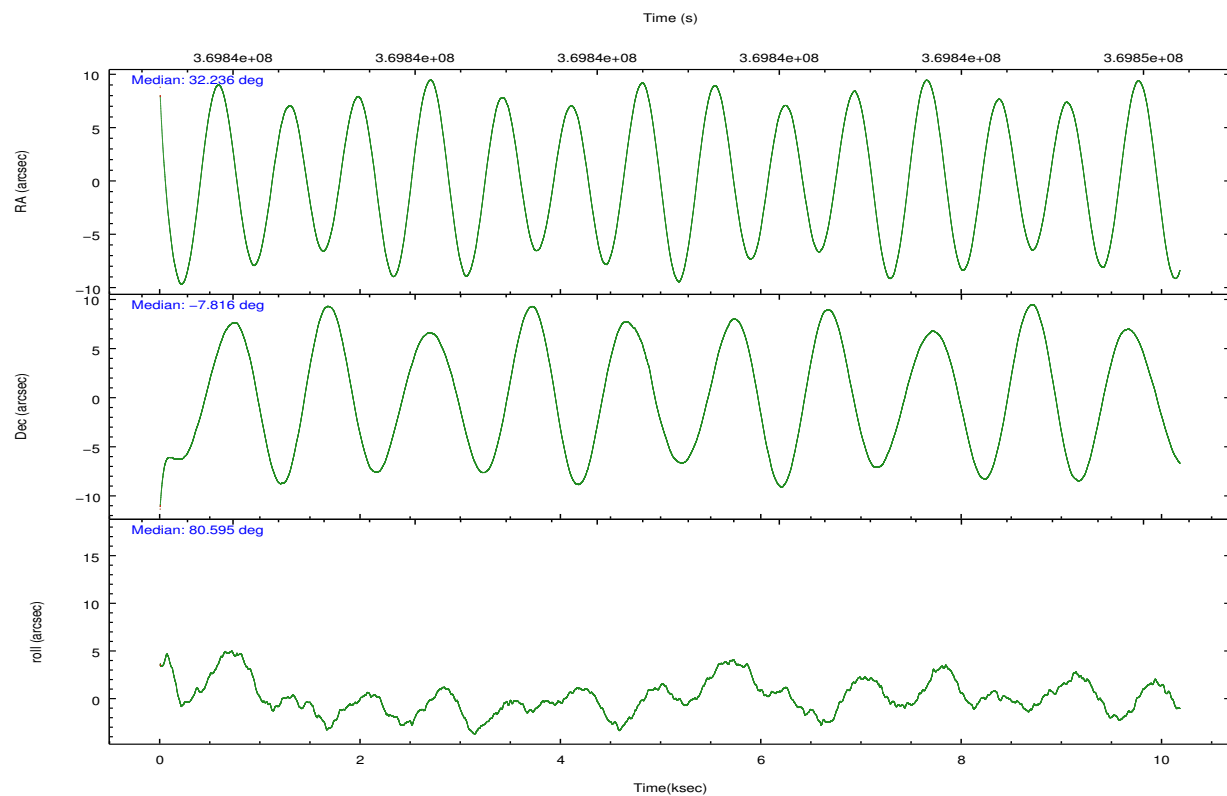
	ccd 0	ccd 1	ccd 2	ccd 3	ccd 6	ccd 7		ccd 0	ccd 1	ccd 2	ccd 3	ccd 6	ccd 7
level 1 events	86322	92357	102444	96948	101341	107492	grade 0 events	3396	6815	6702	3239	3637	4628
rejected events	77383	79918	90702	85535	91750	61901		3%	7%	6%	3%	3%	4%
rejected %	89%	86%	88%	88%	90%	57%	grade 1 events	56	70	82	59	45	148
								0%	0%	0%	0%	0%	0%
							grade 2 events	2331	2155	2274	5191	2377	10193
								2%	2%	2%	5%	2%	9%
							grade 3 events	1057	1097	1012	1004	1060	4459
								1%	1%	0%	1%	1%	4%
							grade 4 events	1055	1151	1016	1007	1073	4277
								1%	1%	0%	1%	1%	3%
							grade 5 events	3371	3608	3143	3851	4019	11405
								3%	3%	3%	3%	3%	10%
							grade 6 events	1843	2138	1685	1781	2162	25509
								2%	2%	1%	1%	2%	23%
							grade 7 events	73213	75323	86530	80816	86968	46873
								84%	81%	84%	83%	85%	43%

2.2 Compared Parameters

Parameter	Planned	Actual	Parameter	Planned	Actual
Instrument	ACIS	ACIS	Obspar format version number	7	7
Detector	ACIS-012367	ACIS-012367	Obspar file type	PREDICTED	ACTUAL
Grating	NONE	NONE	Obspar update status	NONE	UPDATED
Data mode	FAINT	FAINT	CCD I0 on	Y	Y
Observation mode	POINTING	POINTING	CCD I1 on	Y	Y
[deg] Pointing RA	32.245688	32.23576833665371	CCD I2 on	Y	Y
[deg] Pointing Dec	-7.841541	-7.815865780699531	CCD I3 on	Y	Y
[deg] Pointing Roll	80.392600	80.59993585602257	CCD S0 on	N	N
[mm] SIM focus pos	-0.782348	-0.7809083437167272	CCD S1 on	N	N
[mm] SIM defocus	0	0.001439871863259334	CCD S2 on	O1	Y
[mm] SIM translation stage pos	-233.592463	-233.5874344608287	CCD S3 on	Y	Y
[mm] SIM translation stage offset	0	-0.005018542100998502	CCD S4 on	N	N
[s] Observation start time (MET)	369835896.184000	369834428.97782	CCD S5 on	N	N
Observation start date	2009-09-20T12:10:30	2009-09-20T11:47:08	Number of optional ACIS chips dropped	0	0
[s] Observation end time (MET)	369845896.184000	369846144.72841	On-chip summing requested	N	N
Observation end date	2009-09-20T14:57:10	2009-09-20T15:02:24	Subarray requested	NONE	NONE
Read mode	TIMED	TIMED	Alternating exposures requested	N	N
			[s] Primary exposure time	0.000000	3.2

2.3 Aspect



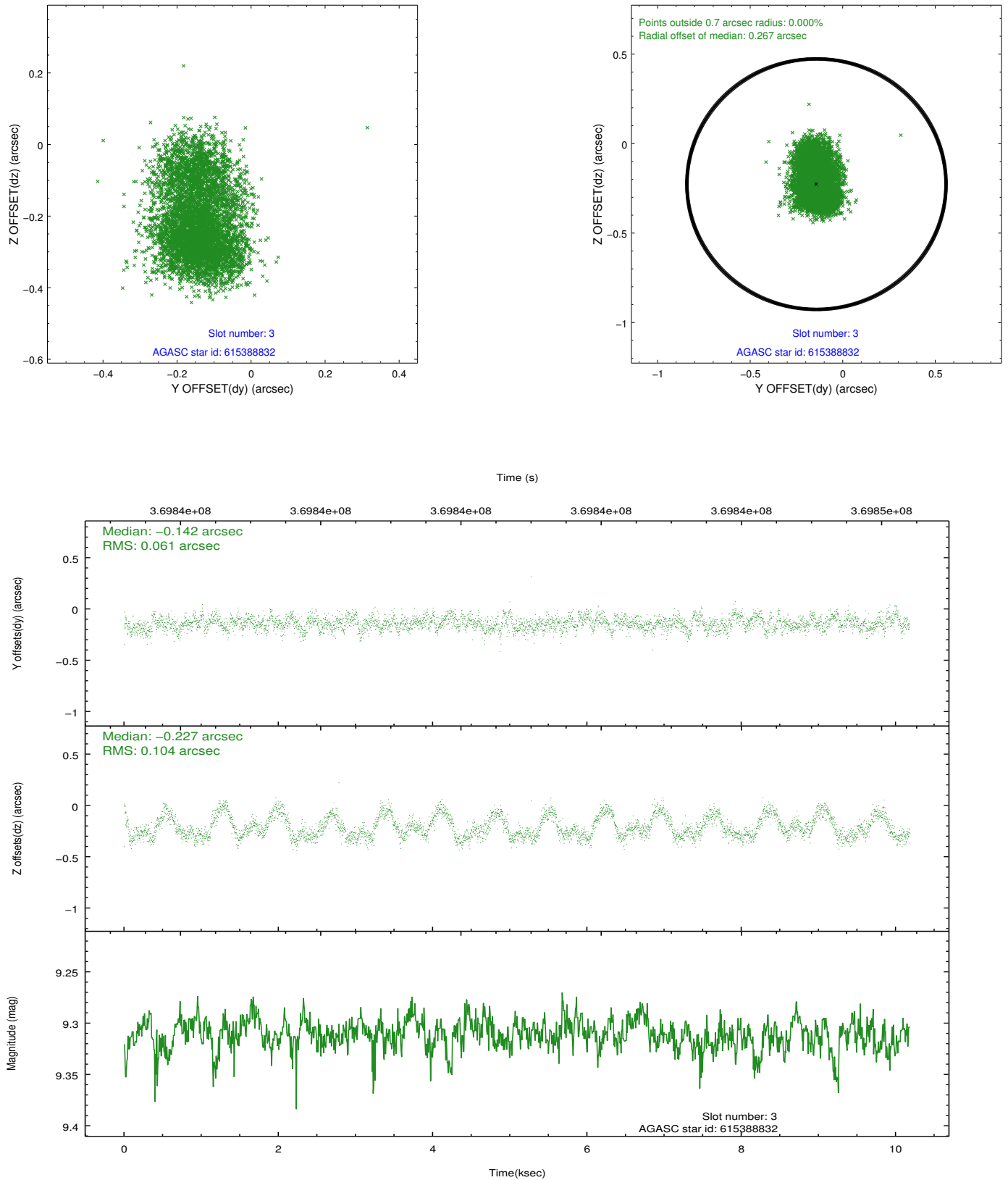


Slot Statistics

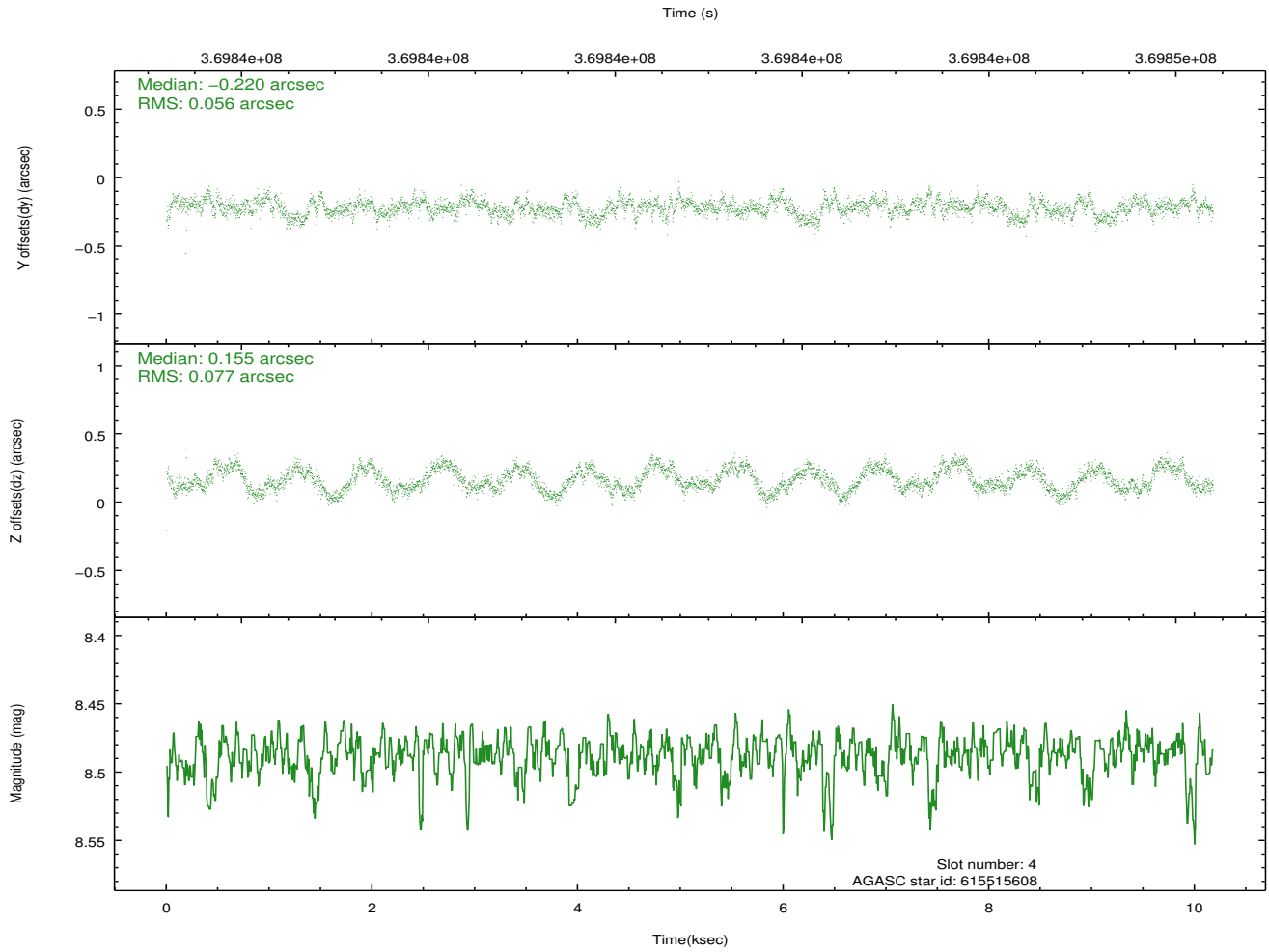
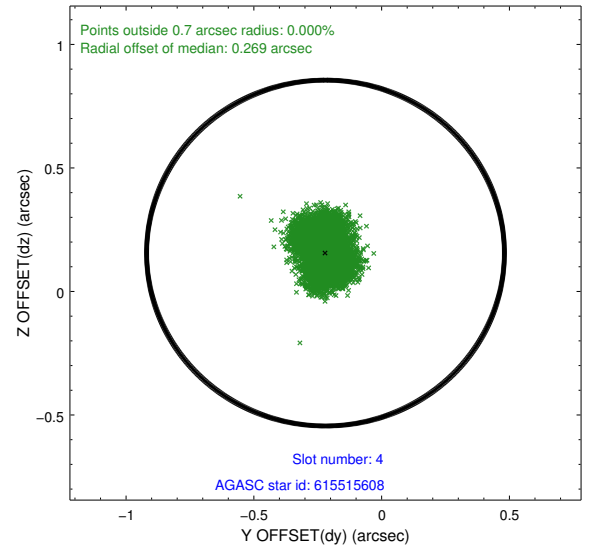
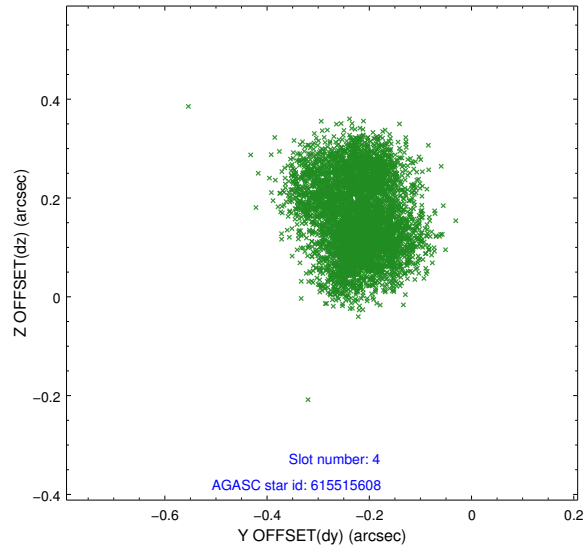
slot	status	id	mag	n_pts	med_dy	med_dz	dr1	dr2	ra	dec	mean_y	mean_z
0	FID	ACIS-I-1	7.09	2483	0.001	-0.018	0.012	0.019	0.000000	0.000000	925.15	-838.28
1	FID	ACIS-I-4	7.00	2483	0.189	0.036	0.011	0.018	0.000000	0.000000	2145.63	1061.34
2	FID	ACIS-I-5	7.08	2483	-0.288	0.054	0.009	0.014	0.000000	0.000000	-1822.51	1059.73
3	GUIDE	615388832	9.31	4943	-0.142	-0.227	0.129	0.209	31.802723	-7.225558	1921.71	1929.77
4	GUIDE	615515608	8.49	4965	-0.220	0.155	0.106	0.155	32.802577	-7.326845	2158.23	-1650.92
5	GUIDE	692191464	10.01	4957	0.102	0.179	0.156	0.254	32.706751	-7.684861	831.01	-1529.36
6	GUIDE	692200328	9.93	4952	0.117	-0.061	0.138	0.225	31.969530	-7.862838	-239.88	957.95
7	GUIDE	692205488	10.03	4957	0.144	-0.053	0.159	0.279	31.989753	-8.005424	-733.90	800.94

2.4 Star Slots

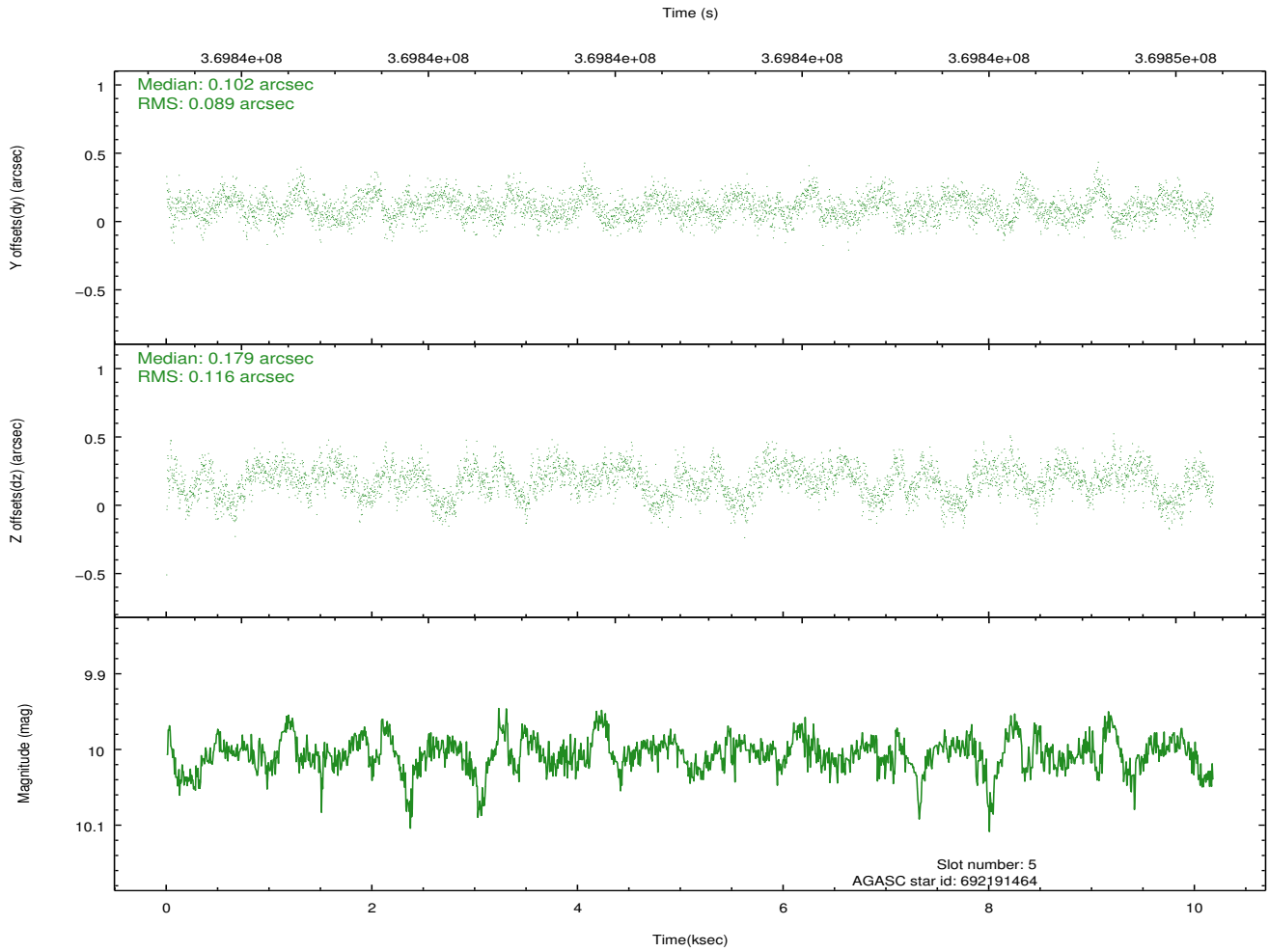
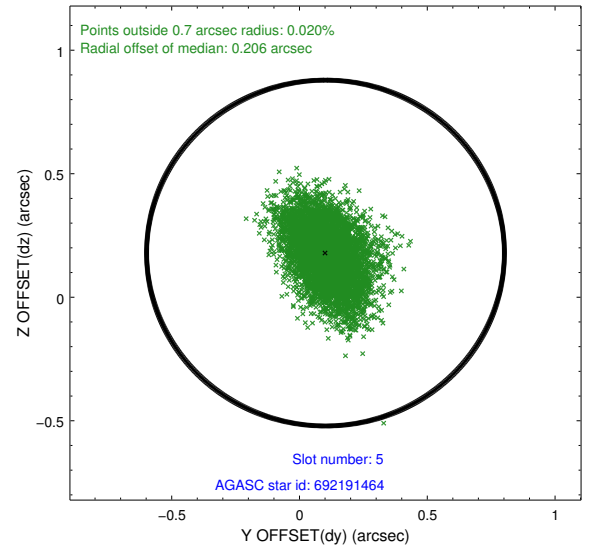
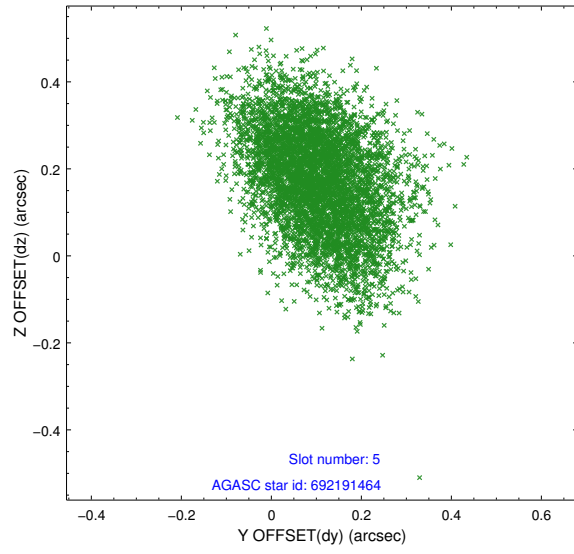
2.4.1 Slot 3



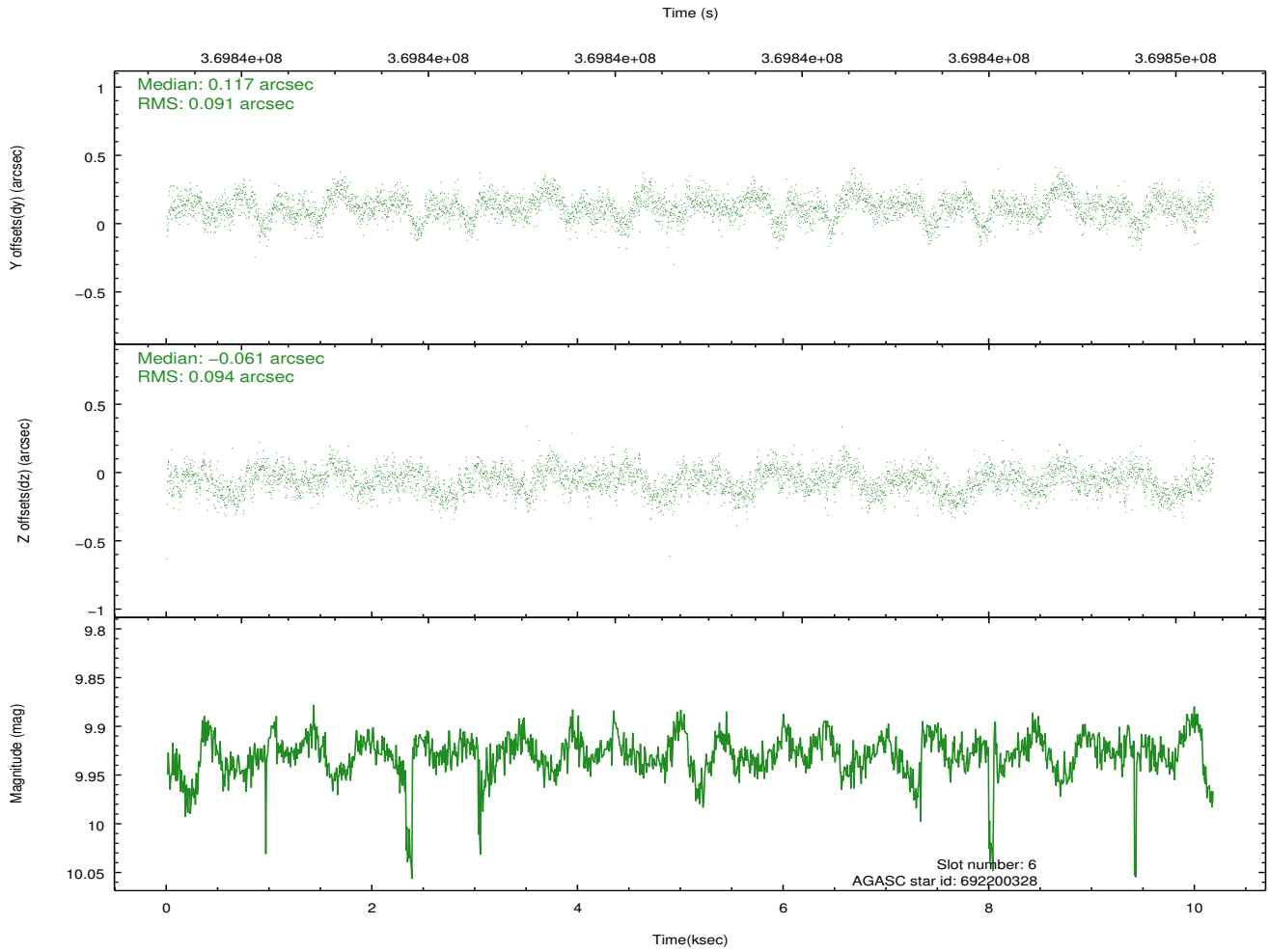
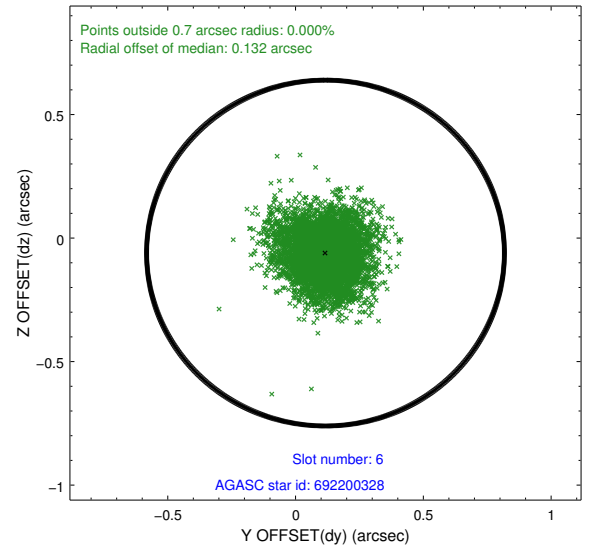
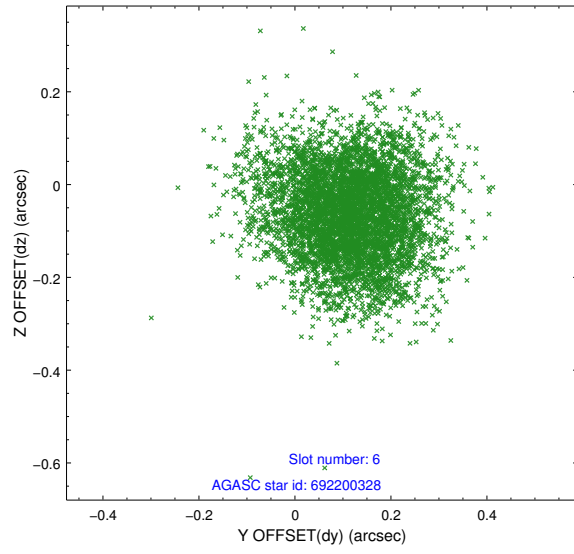
2.4.2 Slot 4



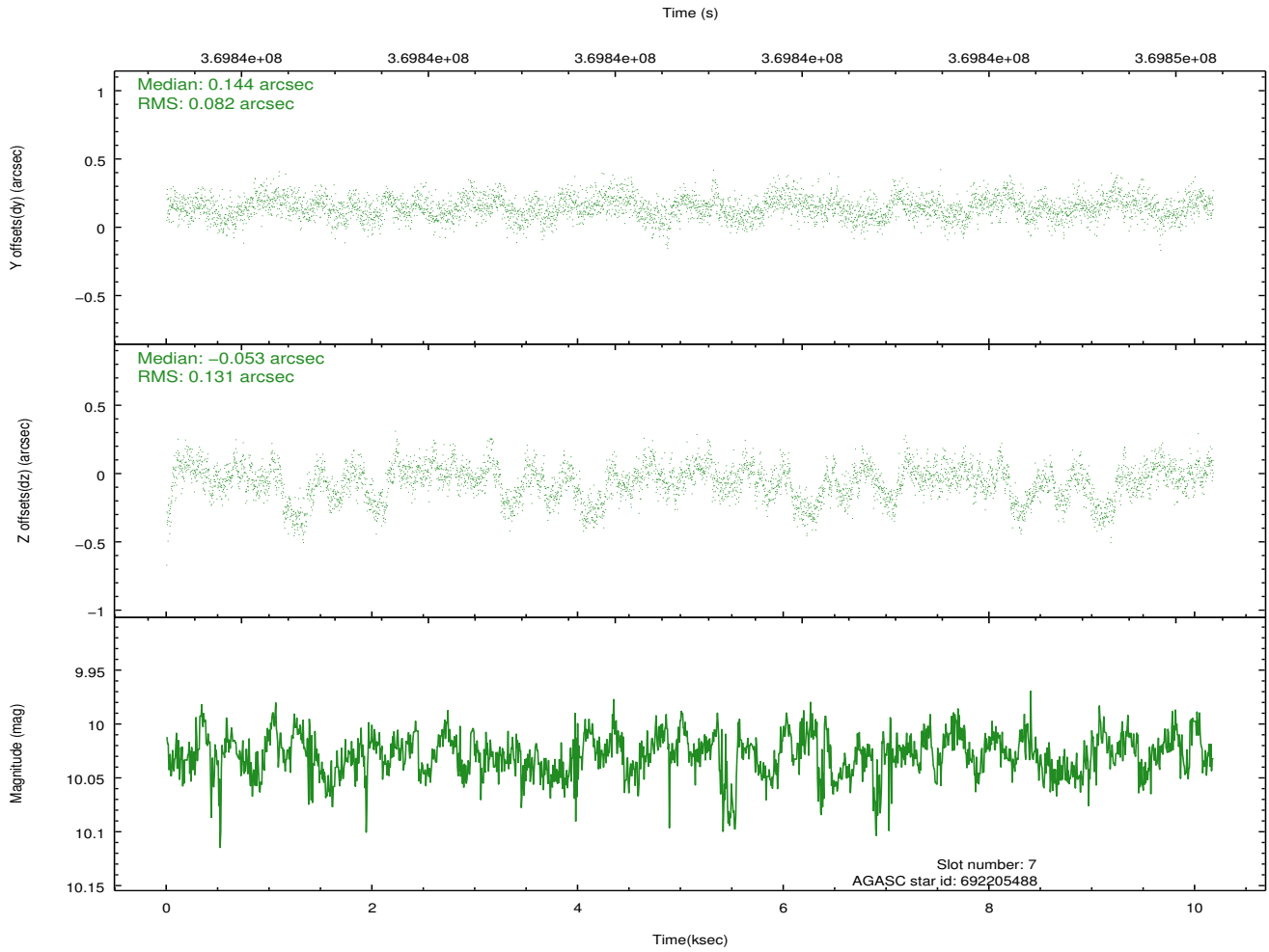
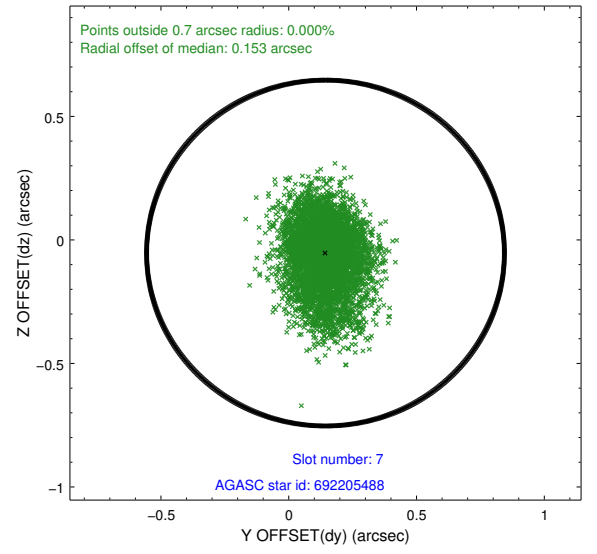
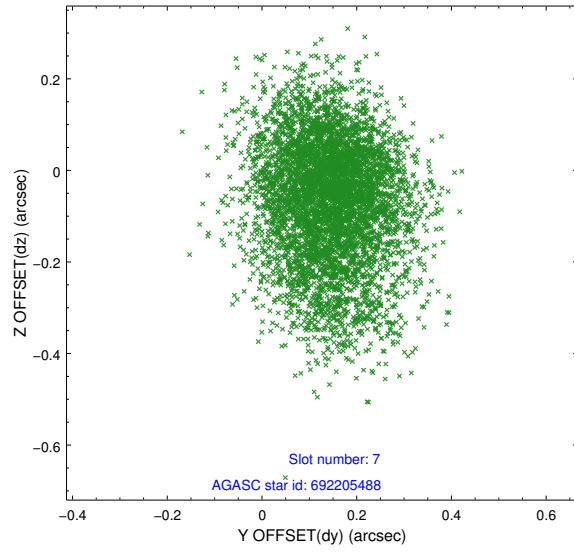
2.4.3 Slot 5



2.4.4 Slot 6

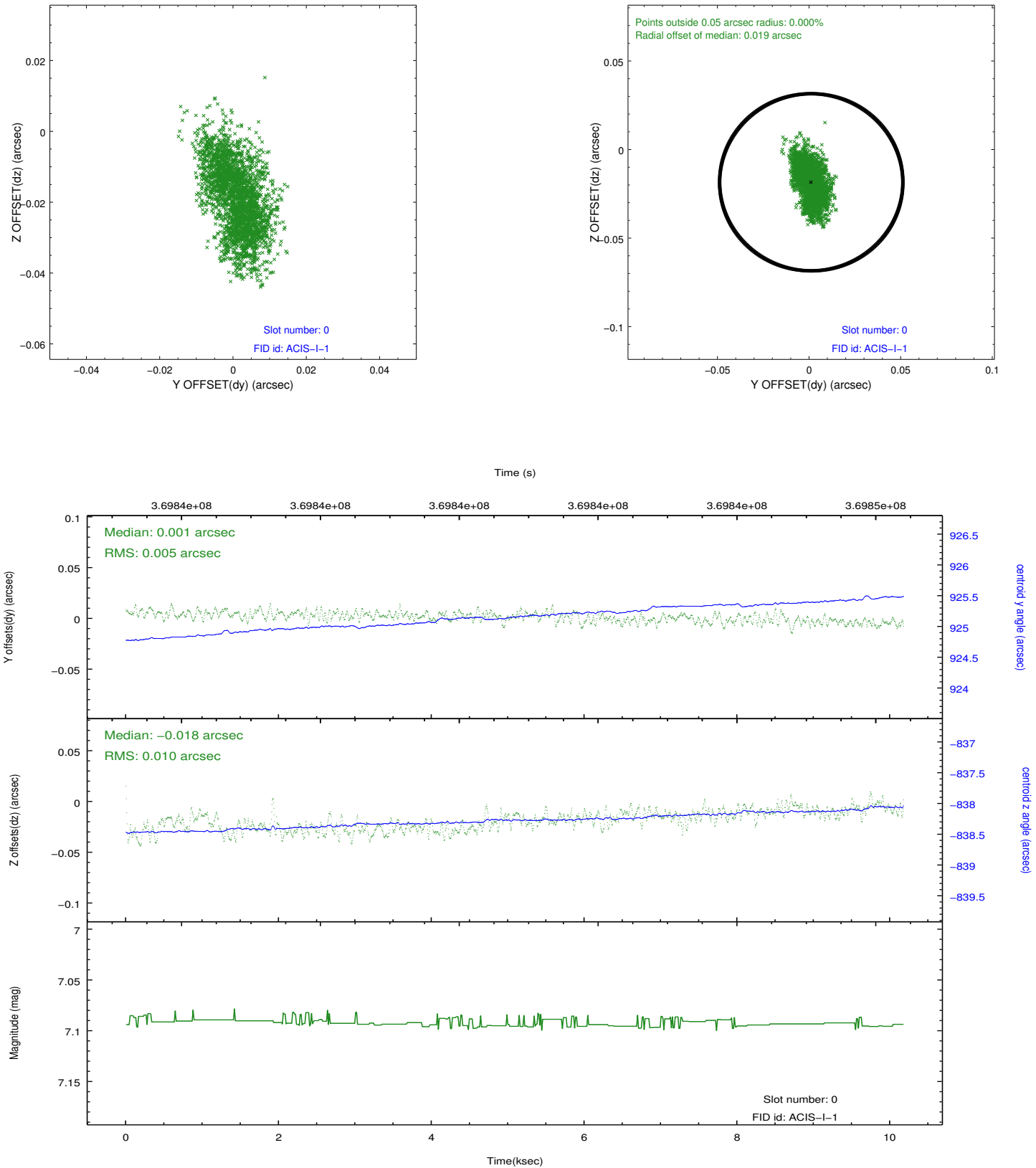


2.4.5 Slot 7

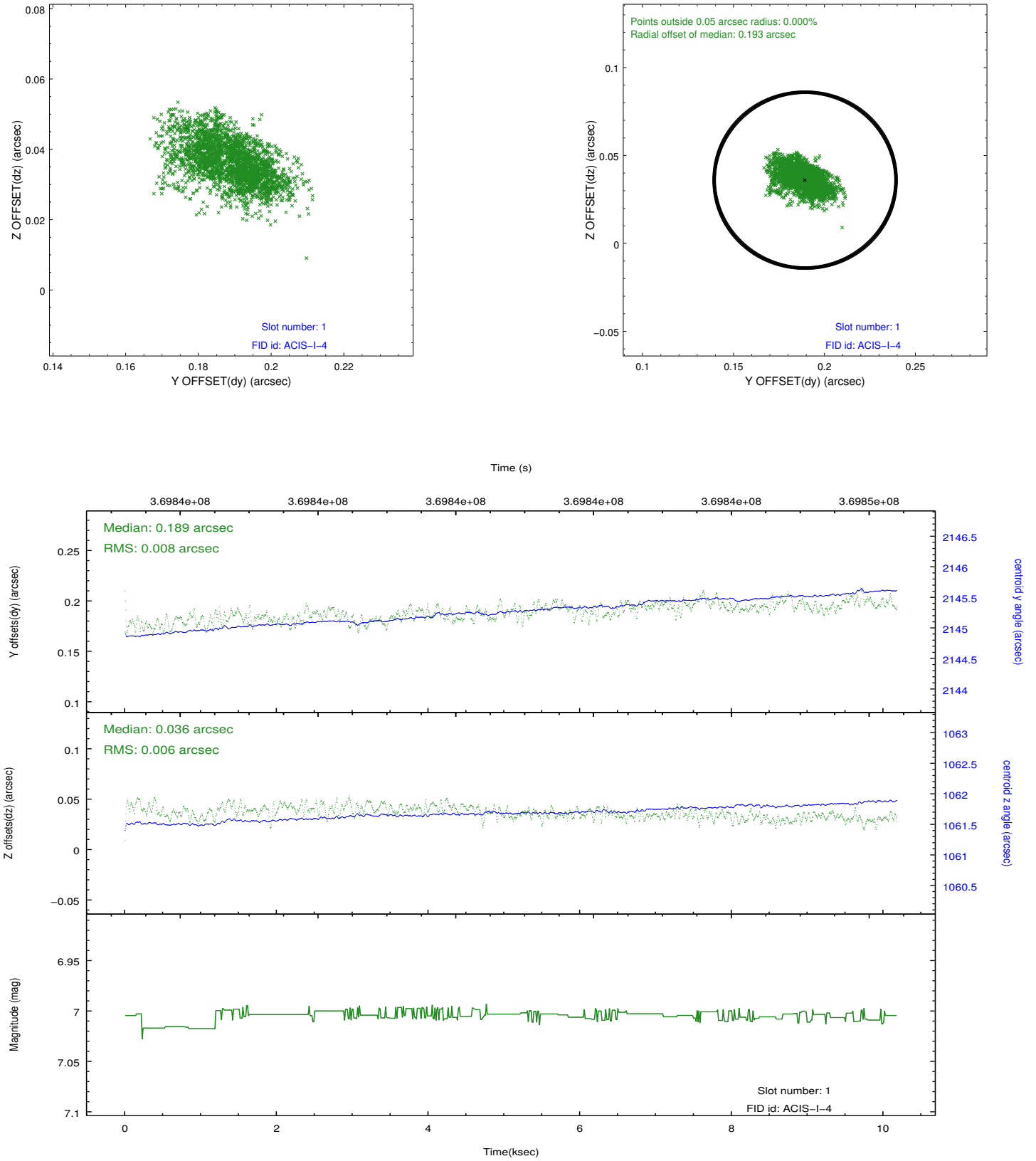


2.5 FID Slots

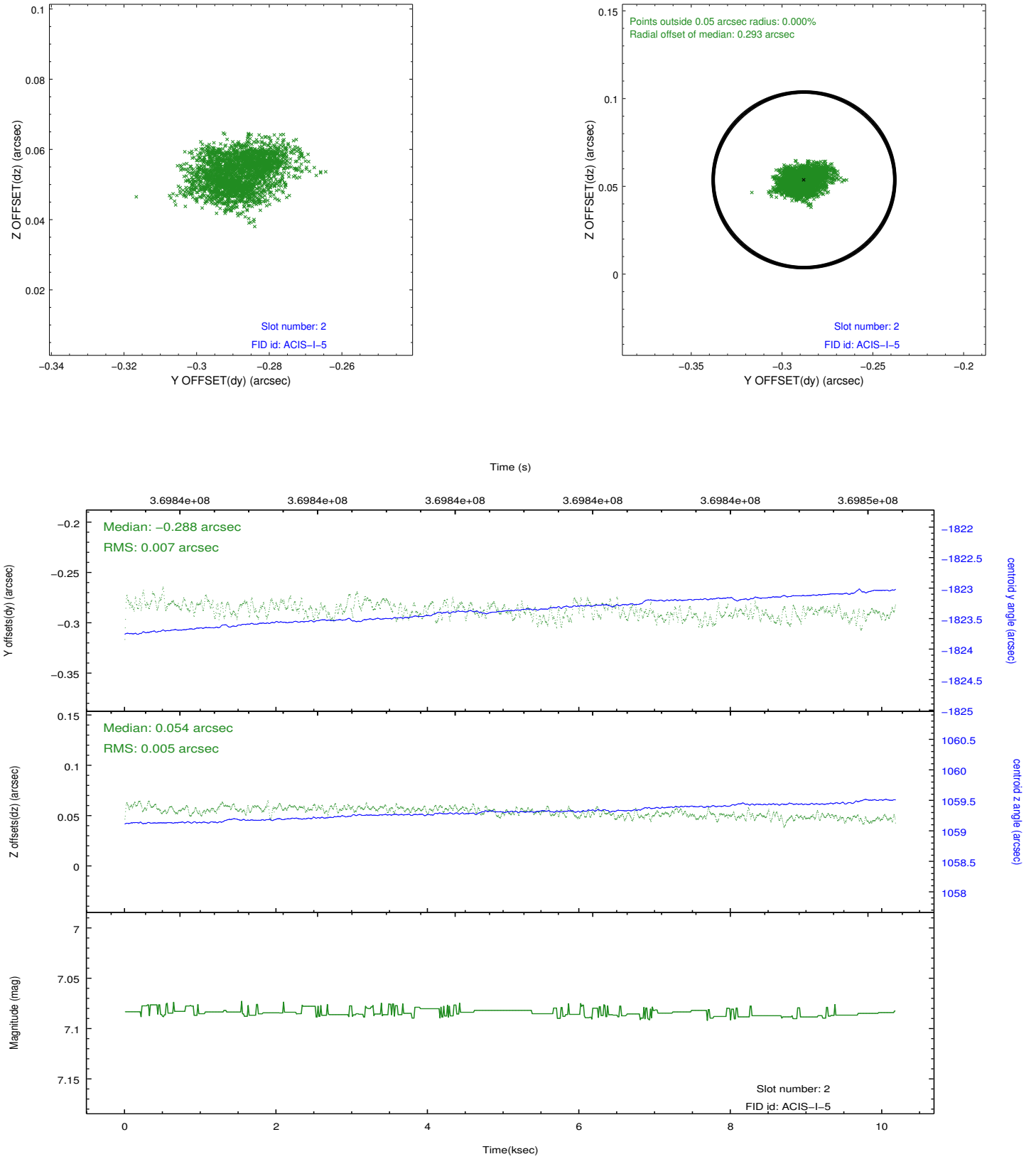
2.5.1 Slot 0



2.5.2 Slot 1



2.5.3 Slot 2



A Summary

A.1 Status

V&V Scientist	Beth Sundheim
V&V Date (YYYY-MM-DD)	2012.06.18
V&V Edition	1
V&V Disposition and Status	OK
V&V Charge Time	10.175999962151

A.2 Comments