

# V&V Reference Report

## L2 ASCDS Version : 8.4.5

Observation 11667 - L2 Version 2  
Chandra X-Ray Center

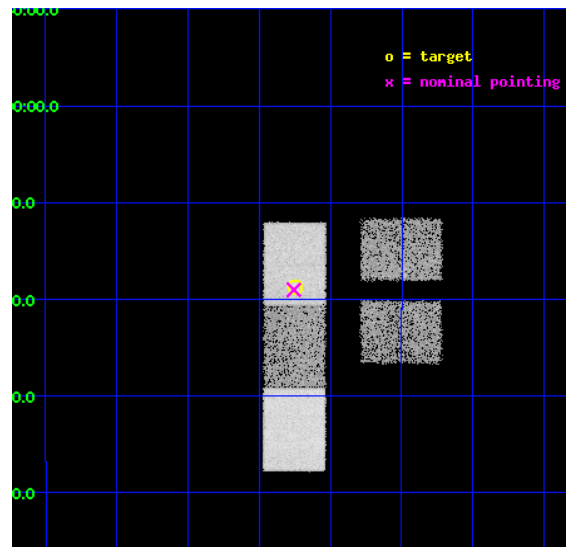
L2 Processing Date : Jun 13 2012

## Contents

<b>1</b>	<b>Front</b>	<b>2</b>
<b>2</b>	<b>OBI</b>	<b>3</b>
2.1	OBI . . . . .	3
2.1.1	Images . . . . .	3
2.1.2	Bias . . . . .	3
2.1.3	Parameters . . . . .	4
2.1.4	Events . . . . .	4
2.2	Compared Parameters . . . . .	5
2.3	Aspect . . . . .	6
2.4	Star Slots . . . . .	9
2.4.1	Slot 3 . . . . .	9
2.4.2	Slot 4 . . . . .	10
2.4.3	Slot 5 . . . . .	11
2.4.4	Slot 6 . . . . .	12
2.4.5	Slot 7 . . . . .	13
2.5	FID Slots . . . . .	14
2.5.1	Slot 0 . . . . .	14
2.5.2	Slot 1 . . . . .	15
2.5.3	Slot 2 . . . . .	16
<b>A</b>	<b>Summary</b>	<b>17</b>
A.1	Status . . . . .	17
A.2	Comments . . . . .	17

# 1 Front

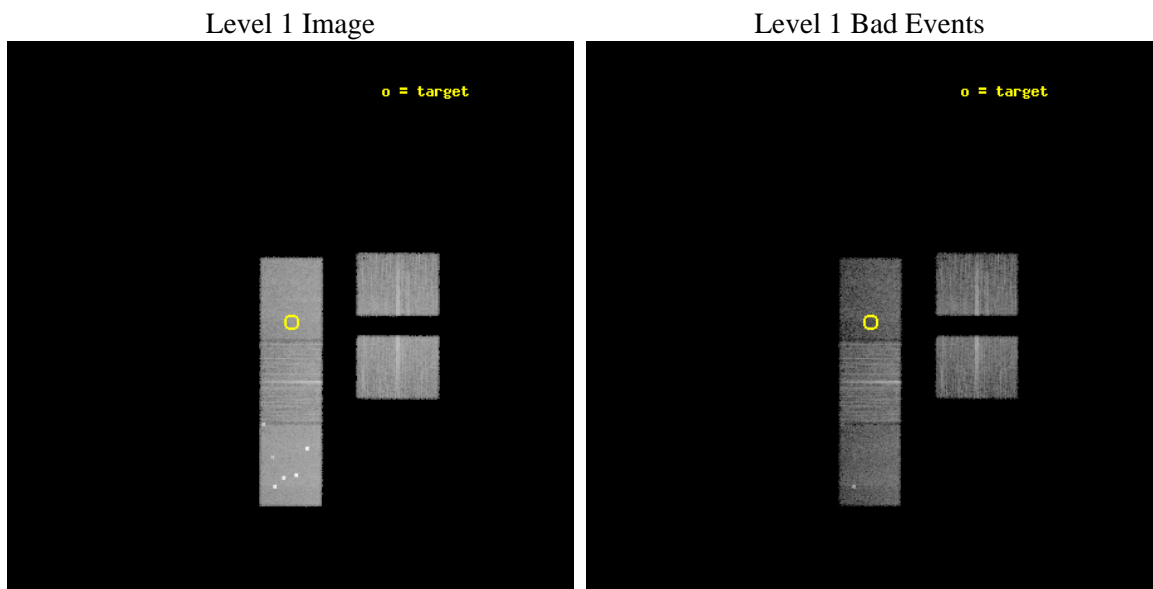
seq_num	702253	Sequence number
obs_id	11667	Observation id
title	Chandra deciphers the Optically 'Dull' X-ray Bright Galaxies at $z \sim 0$ .	Proposal title
observer	Dr. Anca Constantin	Principal investigator
object	SDSS J204744.81-061846.7	Source name
dtcycle	0	&#160
cycle	P	events from which exps? Prim/Second/Both
ra_targ	311.936667	Observer's specified target RA [deg]
dec_targ	-6.312972	Observer's specified target Dec [deg]
ra_nom	311.93926587804	Nominal RA [deg]
dec_nom	-6.3170805031033	Nominal Dec [deg]
roll_nom	270.15691021323	Nominal Roll [deg]
revision	2	Processing version of data
ontime	11882.399881959	Sum of GTIs [s]
livetime	11682.626960927	Livetime [s]
ontime2	11882.399881959	Sum of GTIs [s]
ontime3	11882.399881959	Sum of GTIs [s]
ontime5	11882.399881959	Sum of GTIs [s]
ontime6	11882.399881959	Sum of GTIs [s]
ontime7	11882.399881959	Sum of GTIs [s]
l2events	101791	Number of level 2 events



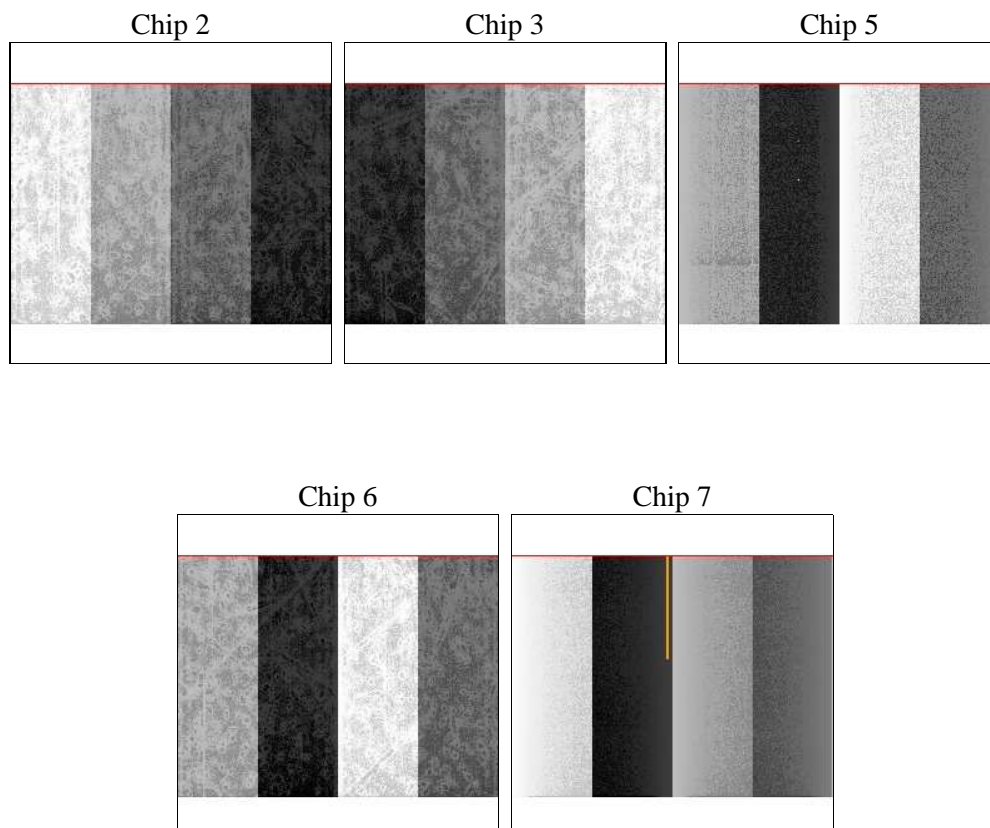
## 2 OBI

### 2.1 OBI

#### 2.1.1 Images



#### 2.1.2 Bias



### 2.1.3 Parameters

obi_num	0	Obi number	sched_exp_time	11700.000000	[s] Scheduled observation exposure time
ascdsver	8.4.5	Processing system revision	ontime	11882.399881959	Sum of GTIs [s]
caldbver	4.4.10	&#160	ontime2	11882.399881959	Sum of GTIs [s]
date	2012-06-13T02:49:50	Date and time of file creation	ontime3	11882.399881959	Sum of GTIs [s]
revision	2	Processing version of data	ontime5	11882.399881959	Sum of GTIs [s]
			ontime6	11882.399881959	Sum of GTIs [s]
			ontime7	11882.399881959	Sum of GTIs [s]
			l1events	460877	Number of level 1 events

### 2.1.4 Events

	ccd 2	ccd 3	ccd 5	ccd 6	ccd 7
level 1 events	86719	80141	125911	84325	83781
rejected events	79492	73114	60413	76349	46676
rejected %	91%	91%	47%	90%	55%

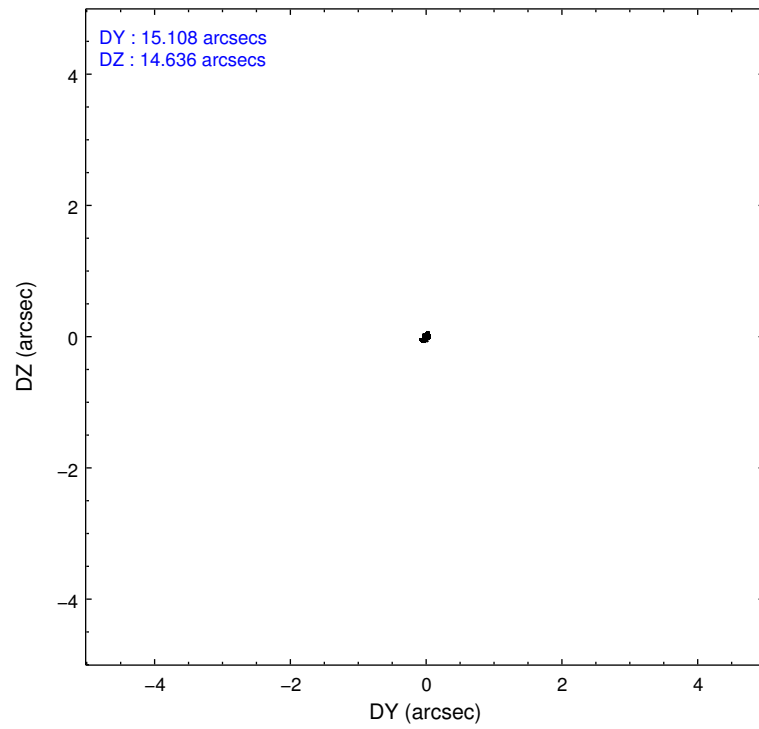
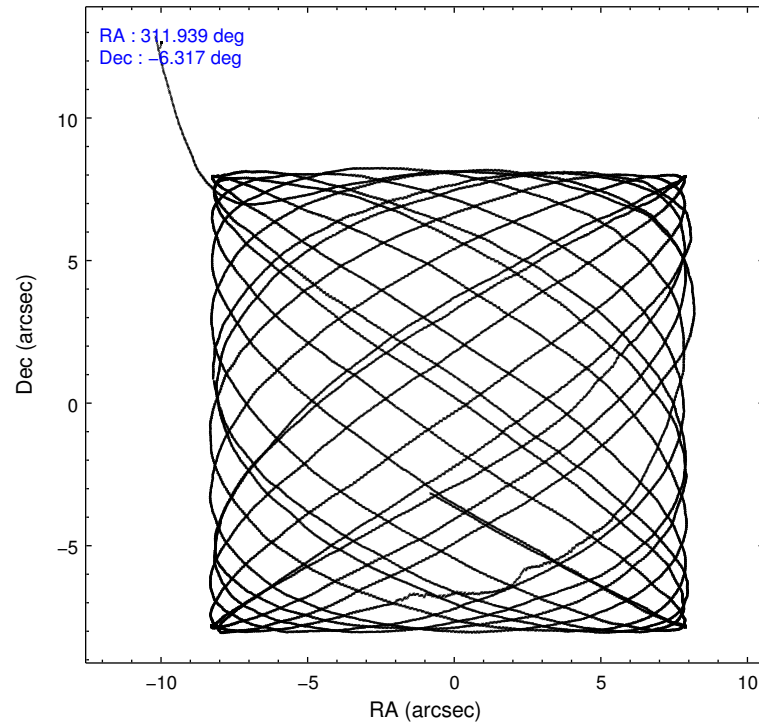
	ccd 2	ccd 3	ccd 5	ccd 6	ccd 7
grade 0 events	2969	2897	22043	3275	4601
	3%	3%	17%	3%	5%
grade 1 events	42	52	850	45	130
	0%	0%	0%	0%	0%
grade 2 events	1920	1643	18659	2029	9207
	2%	2%	14%	2%	10%
grade 3 events	928	972	2632	1012	4112
	1%	1%	2%	1%	4%
grade 4 events	969	968	2505	1041	4085
	1%	1%	1%	1%	4%
grade 5 events	2144	2867	8653	3008	8958
	2%	3%	6%	3%	10%
grade 6 events	1397	1525	28318	1713	19847
	1%	1%	22%	2%	23%
grade 7 events	76350	69217	42251	72202	32841
	88%	86%	33%	85%	39%

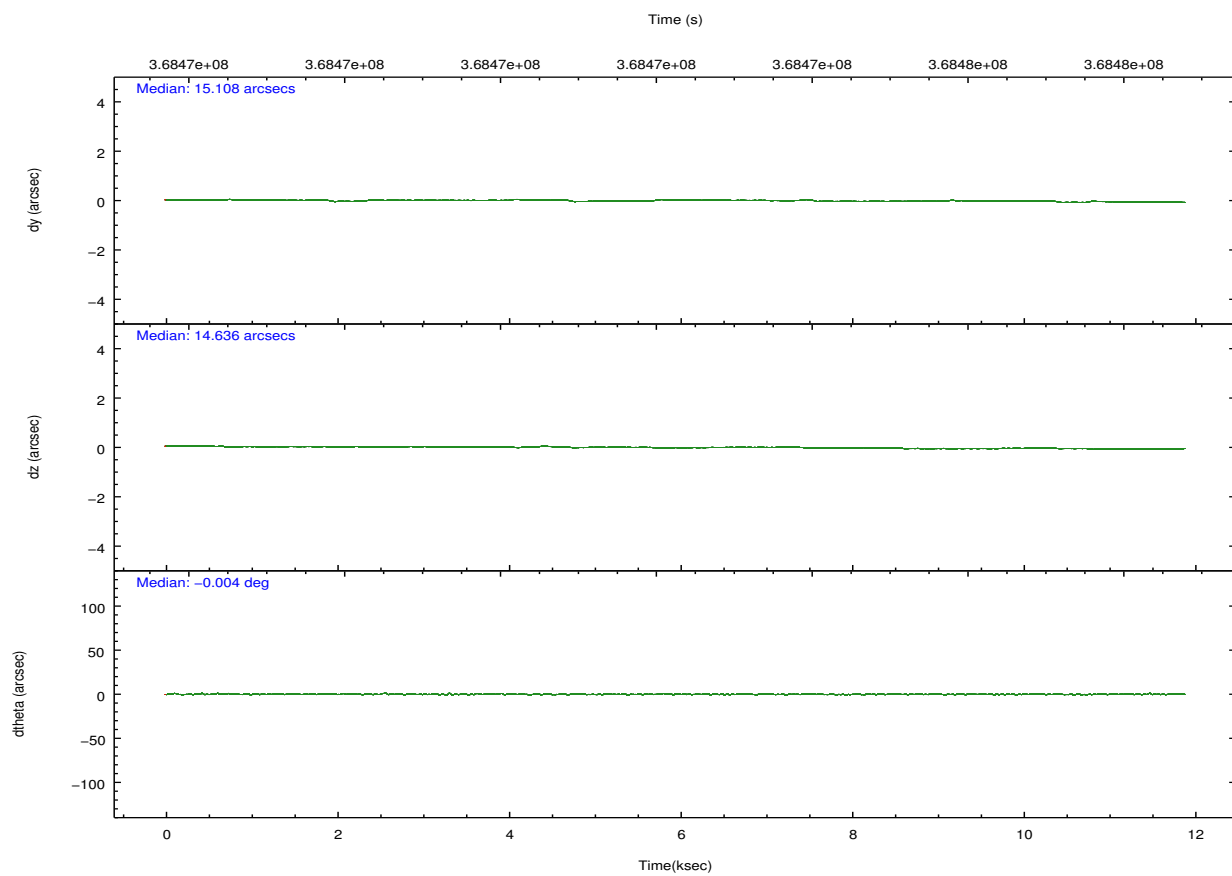
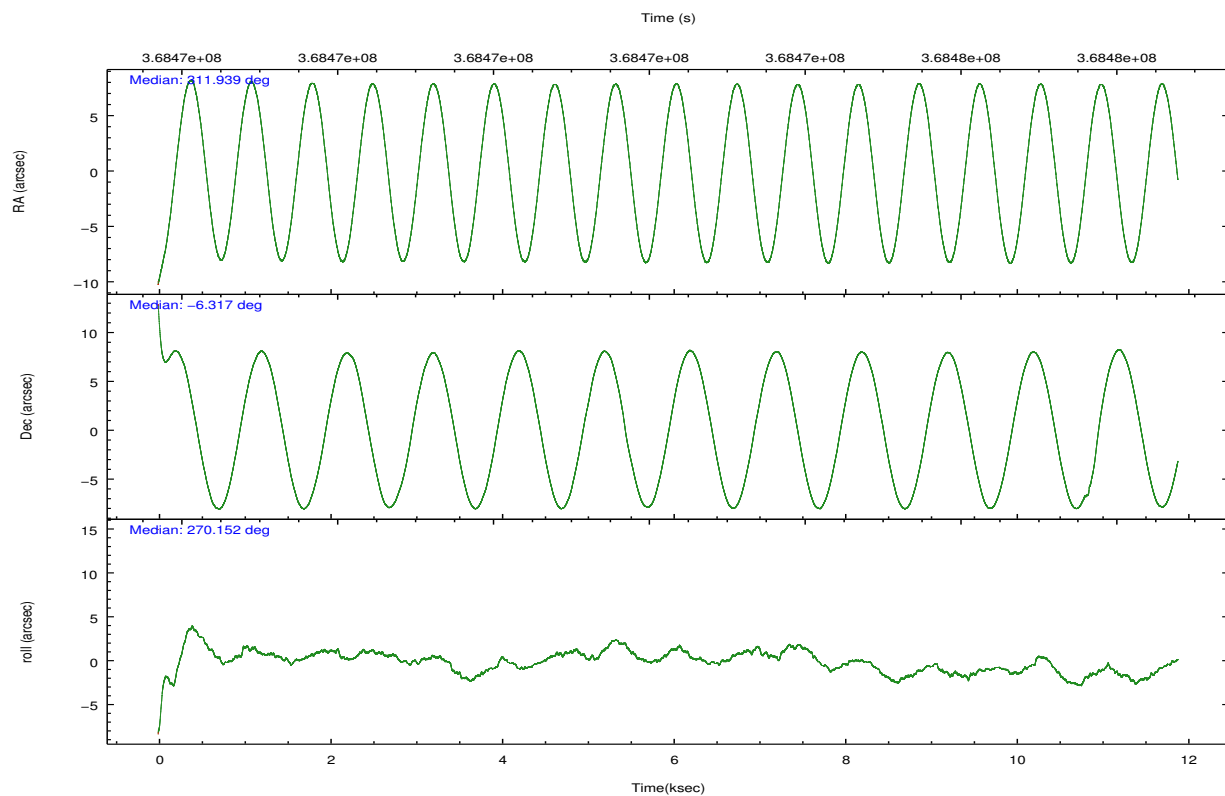


## 2.2 Compared Parameters

Parameter	Planned	Actual	Parameter	Planned	Actual
Instrument	ACIS	ACIS	Obspar format version number	7	7
Detector	ACIS-23567	ACIS-23567	Obspar file type	PREDICTED	ACTUAL
Grating	NONE	NONE	Obspar update status	NONE	UPDATED
Data mode	FAINT	FAINT	CCD I0 on	N	N
Observation mode	POINTING	POINTING	CCD I1 on	N	N
[deg] Pointing RA	311.925094	311.9392658780392	CCD I2 on	O2	Y
[deg] Pointing Dec	-6.293639	-6.317080503103321	CCD I3 on	O3	Y
[deg] Pointing Roll	269.998730	270.1569102132321	CCD S0 on	N	N
[mm] SIM focus pos	-0.684267	-0.6828225247311905	CCD S1 on	O1	Y
[mm] SIM defocus	0	0.001444936568705701	CCD S2 on	O4	Y
[mm] SIM translation stage pos	-190.132523	-190.145094680475	CCD S3 on	Y	Y
[mm] SIM translation stage offset	0	0.01257209746719923	CCD S4 on	N	N
[s] Observation start time (MET)	368466477.184000	368464719.3591	CCD S5 on	N	N
Observation start date	2009-09-04T15:46:51	2009-09-04T15:18:39	Number of optional ACIS chips dropped	0	0
[s] Observation end time (MET)	368478177.184000	368478392.34729	On-chip summing requested	N	N
Observation end date	2009-09-04T19:01:51	2009-09-04T19:06:32	Subarray requested	CUSTOM	CUSTOM
Read mode	TIMED	TIMED	Subarray start row	128	128
			Subarray row count	768	768
			Alternating exposures requested	N	N
			[s] Primary exposure time	0.000000	2.4

## 2.3 Aspect



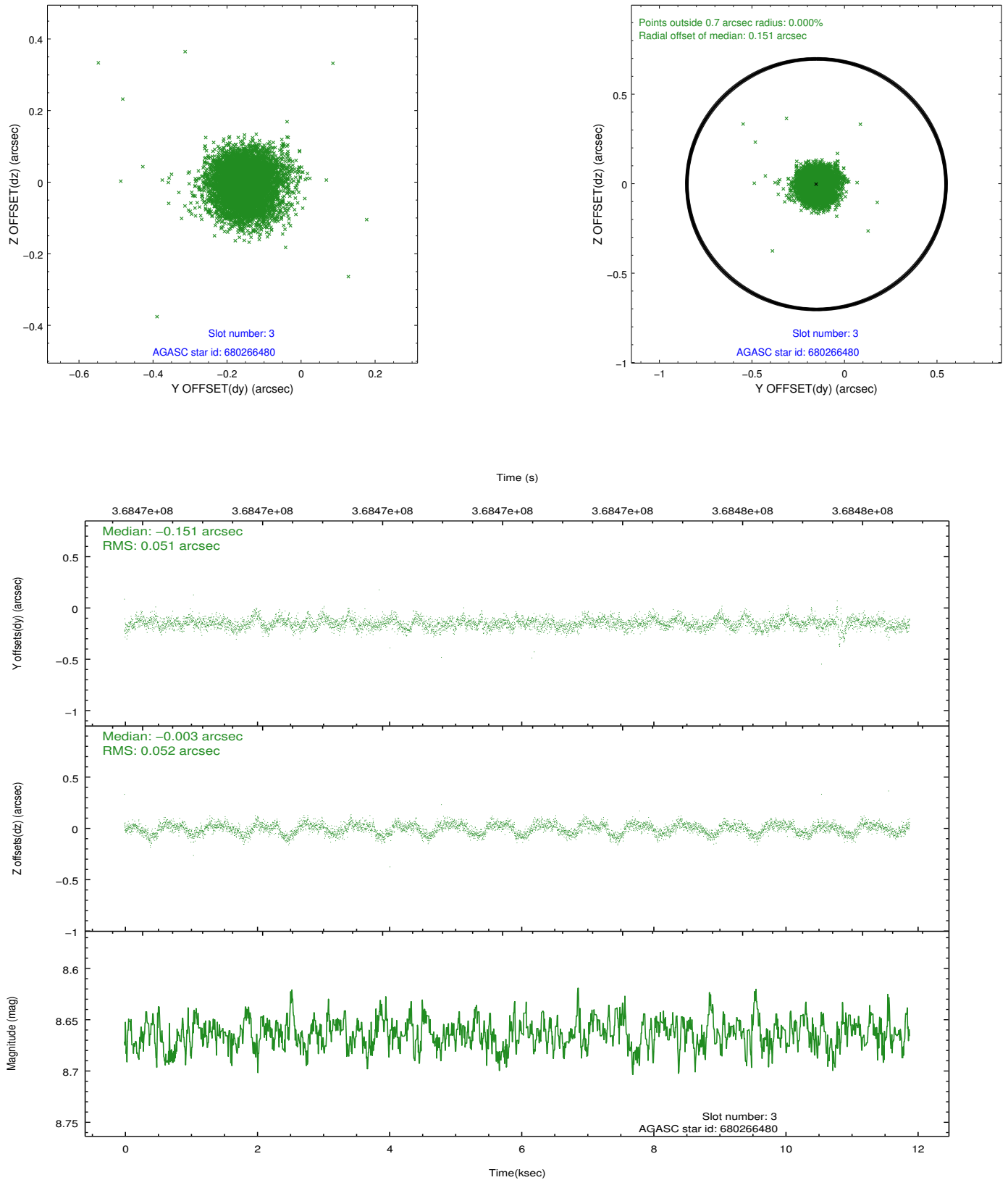


### Slot Statistics

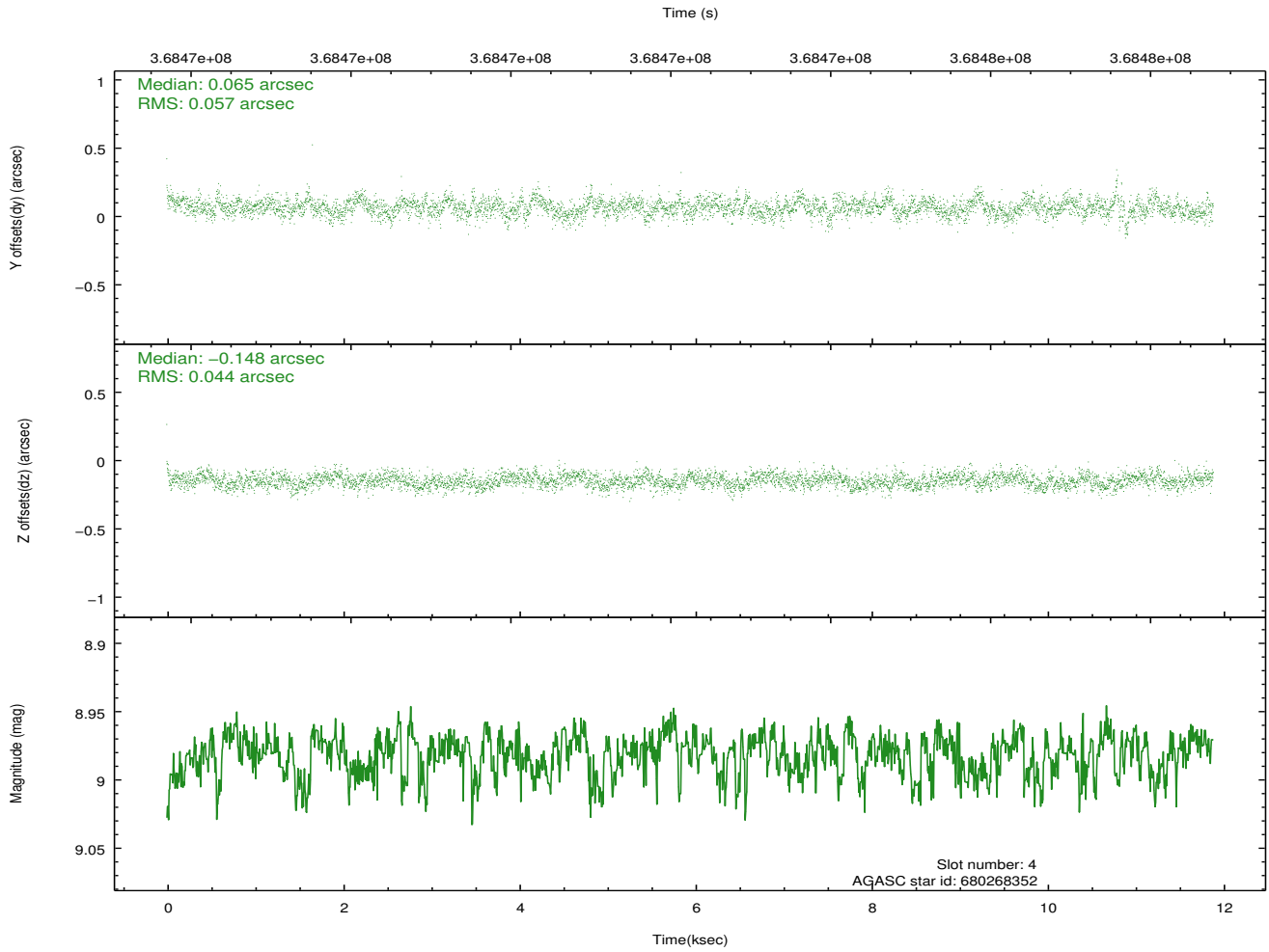
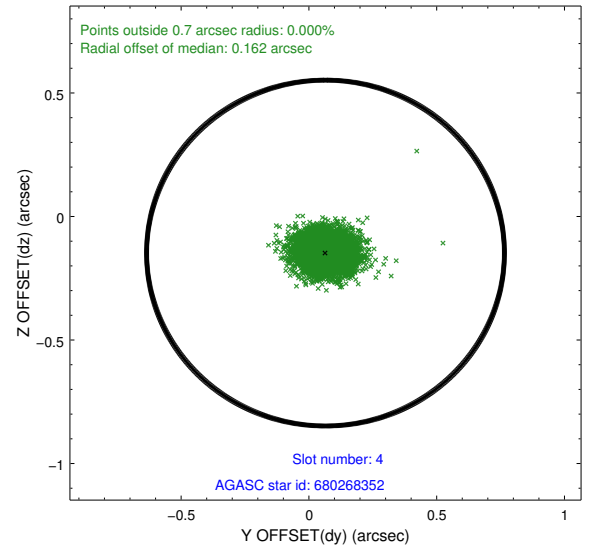
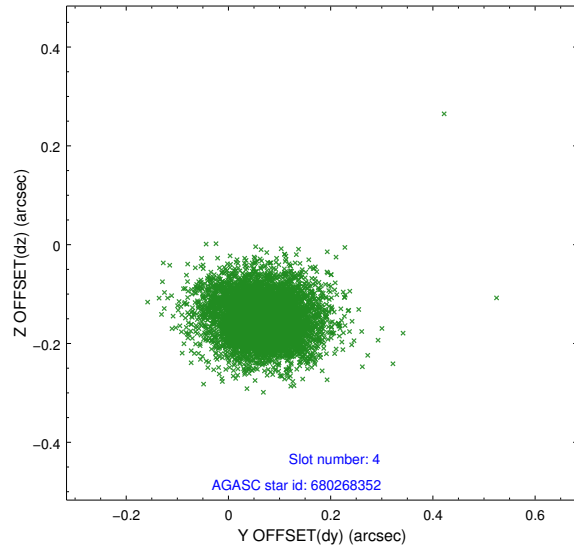
slot	status	id	mag	n_pts	med_dy	med_dz	dr1	dr2	ra	dec	mean_y	mean_z
0	FID	ACIS-S-2	6.96	2900	-0.102	-0.056	0.006	0.011	0.000000	0.000000	-768.16	-1735.96
1	FID	ACIS-S-4	7.04	2900	0.234	0.064	0.006	0.010	0.000000	0.000000	2145.24	172.23
2	FID	ACIS-S-5	7.07	2900	-0.163	0.000	0.006	0.011	0.000000	0.000000	-1820.54	166.29
3	GUIDE	680266480	8.66	5783	-0.151	-0.003	0.076	0.122	312.111813	-6.799431	1821.42	667.66
4	GUIDE	680268352	8.98	5793	0.065	-0.148	0.073	0.125	311.940426	-6.943973	2342.11	55.08
5	GUIDE	680269512	7.82	5799	0.047	0.132	0.067	0.109	311.312731	-6.762770	1691.45	-2188.85
6	GUIDE	680272120	8.30	5794	-0.019	-0.013	0.060	0.103	311.315735	-6.157899	-486.10	-2181.70
7	GUIDE	680274736	8.63	5704	0.055	0.039	0.072	0.116	312.037972	-6.205509	-316.84	403.73

## 2.4 Star Slots

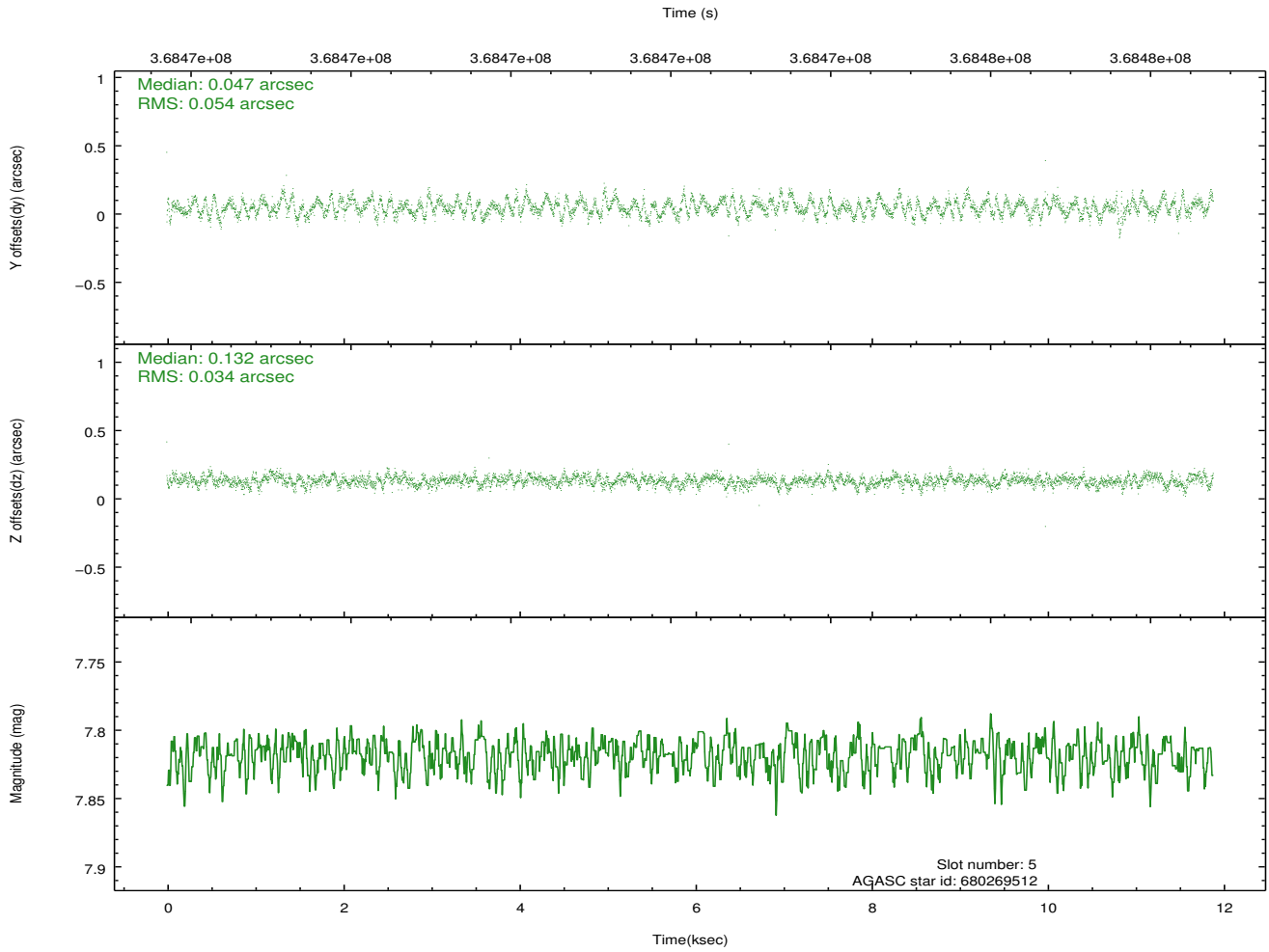
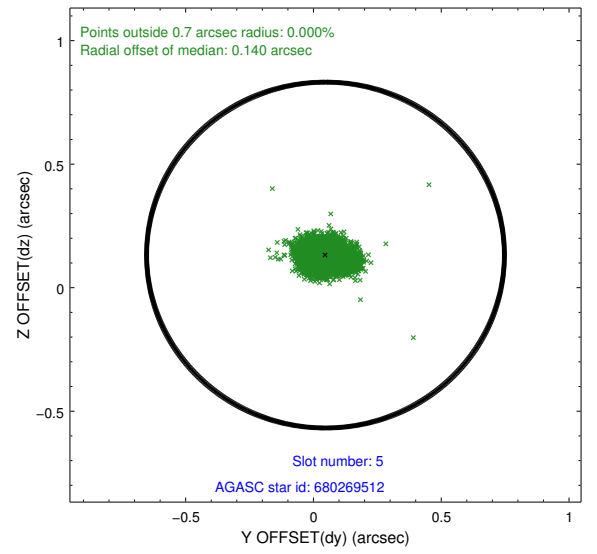
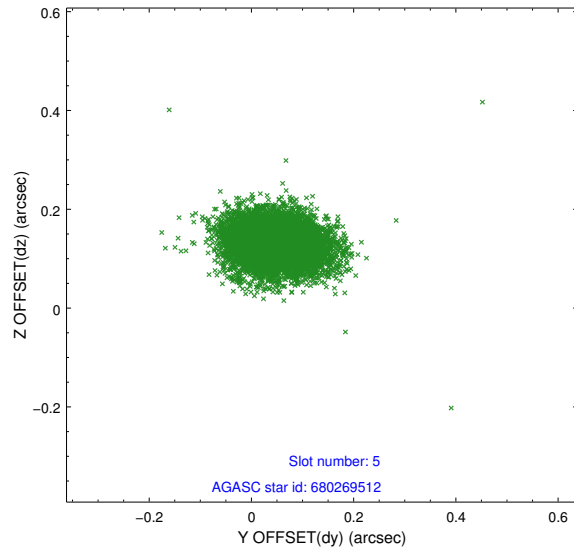
### 2.4.1 Slot 3



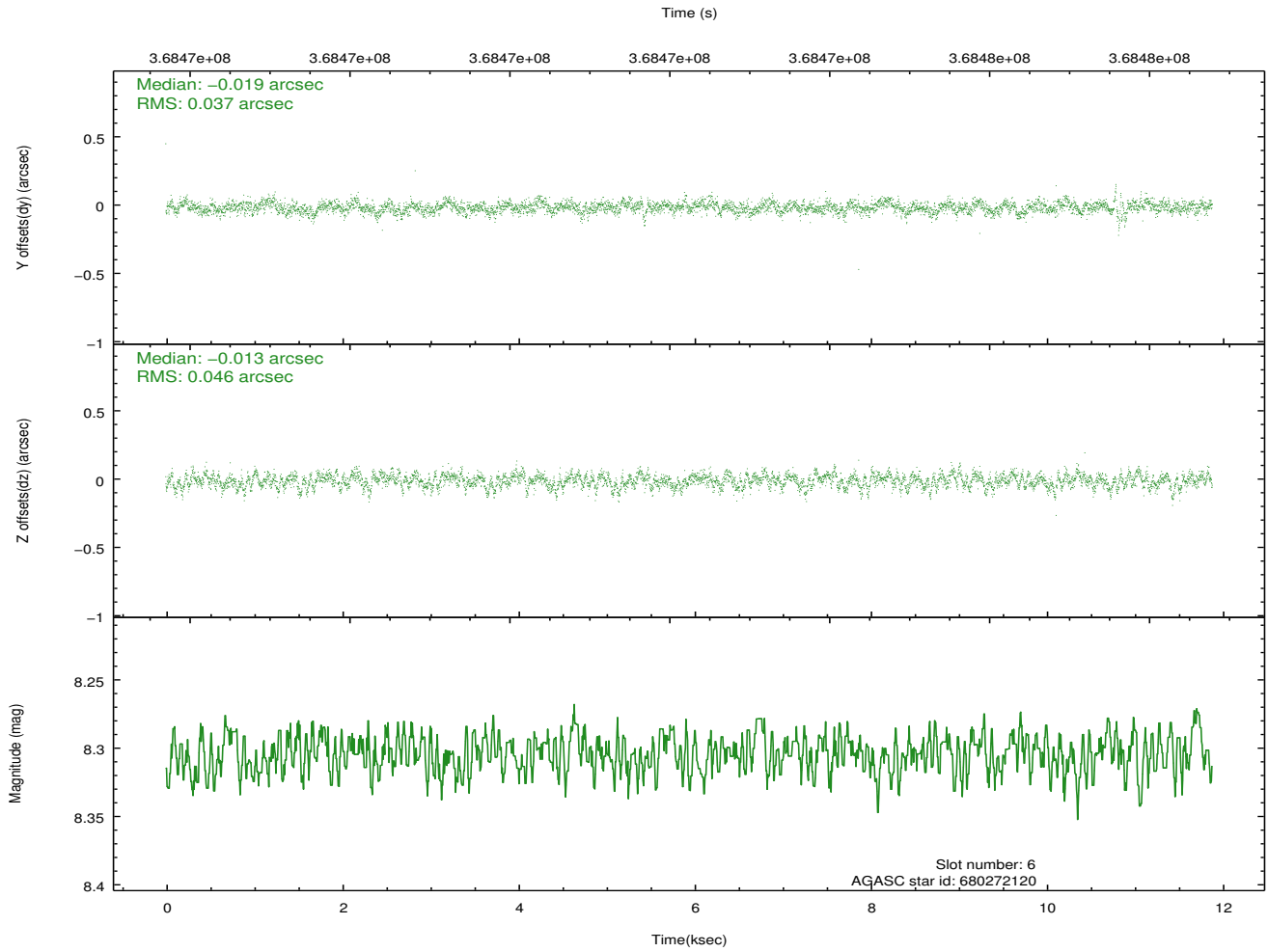
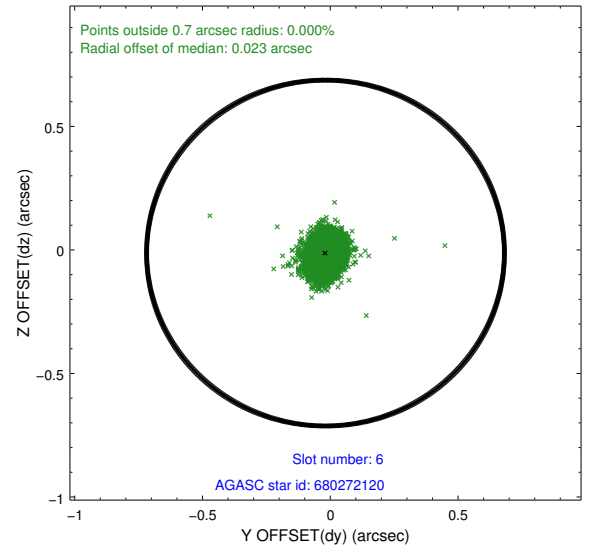
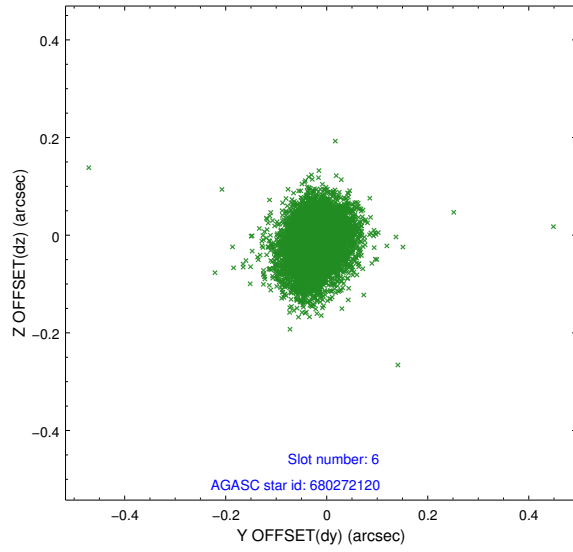
## 2.4.2 Slot 4



### 2.4.3 Slot 5

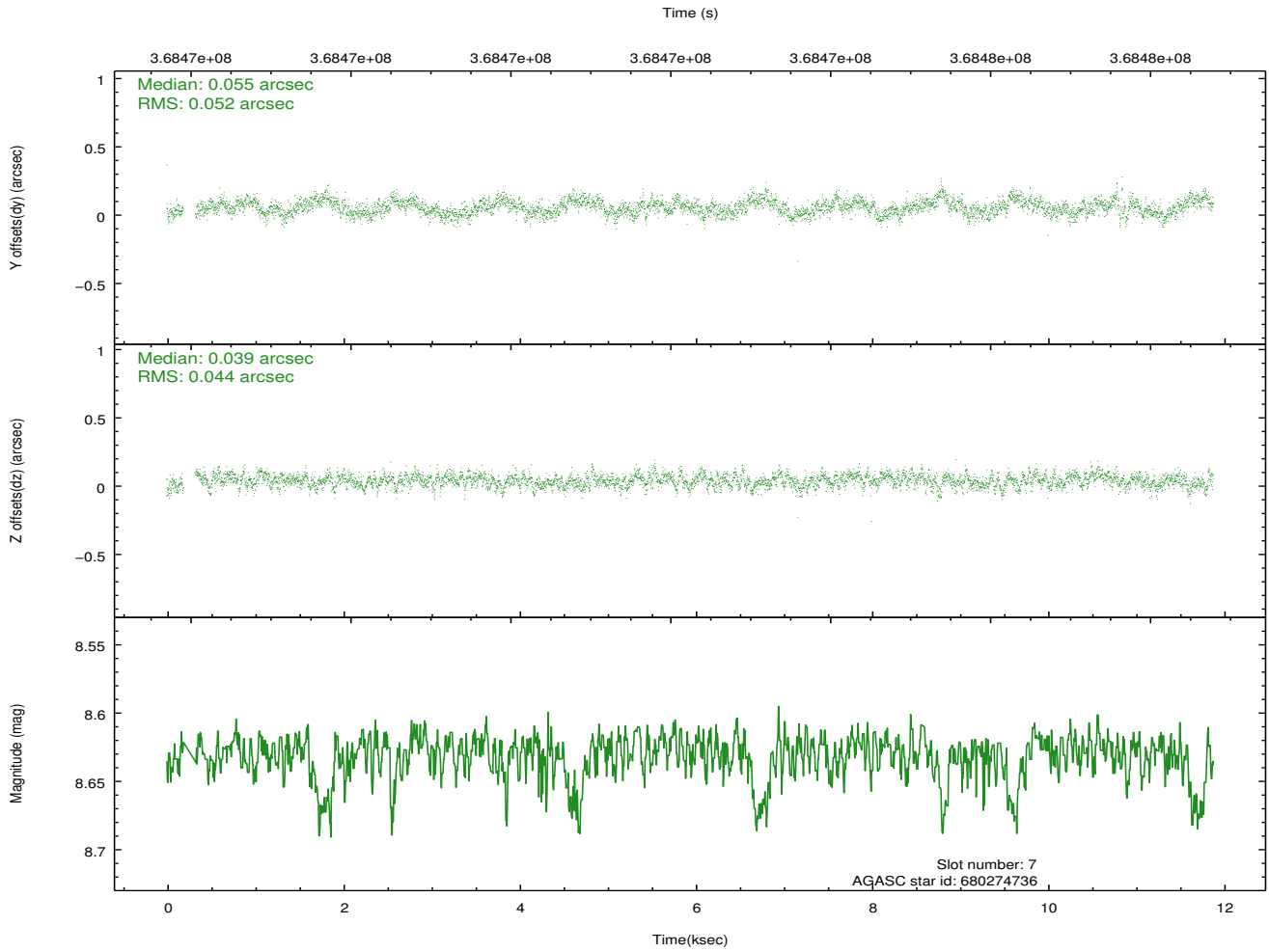
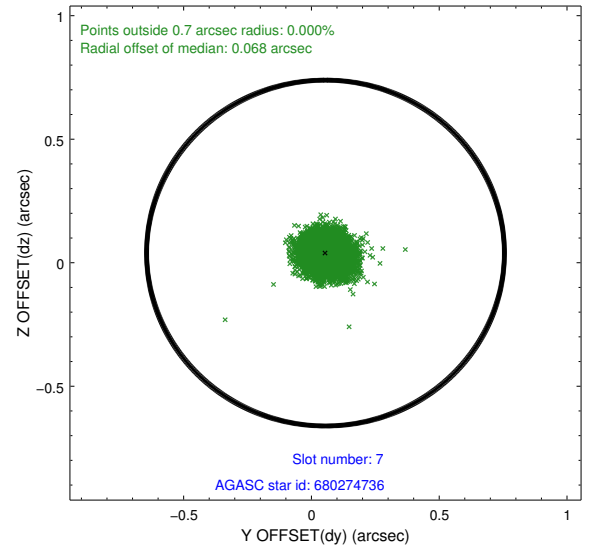
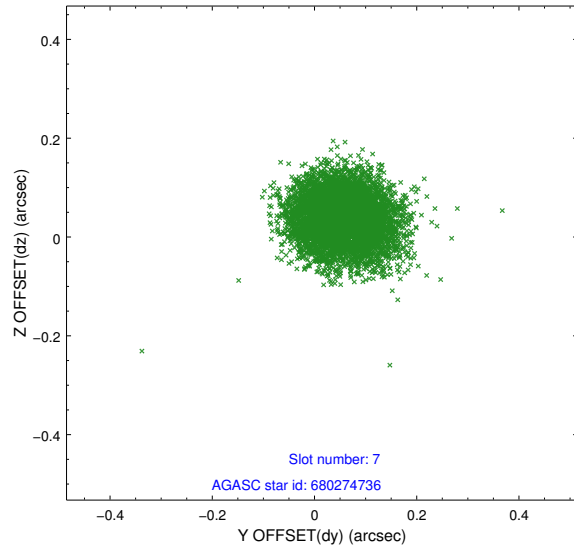


## 2.4.4 Slot 6



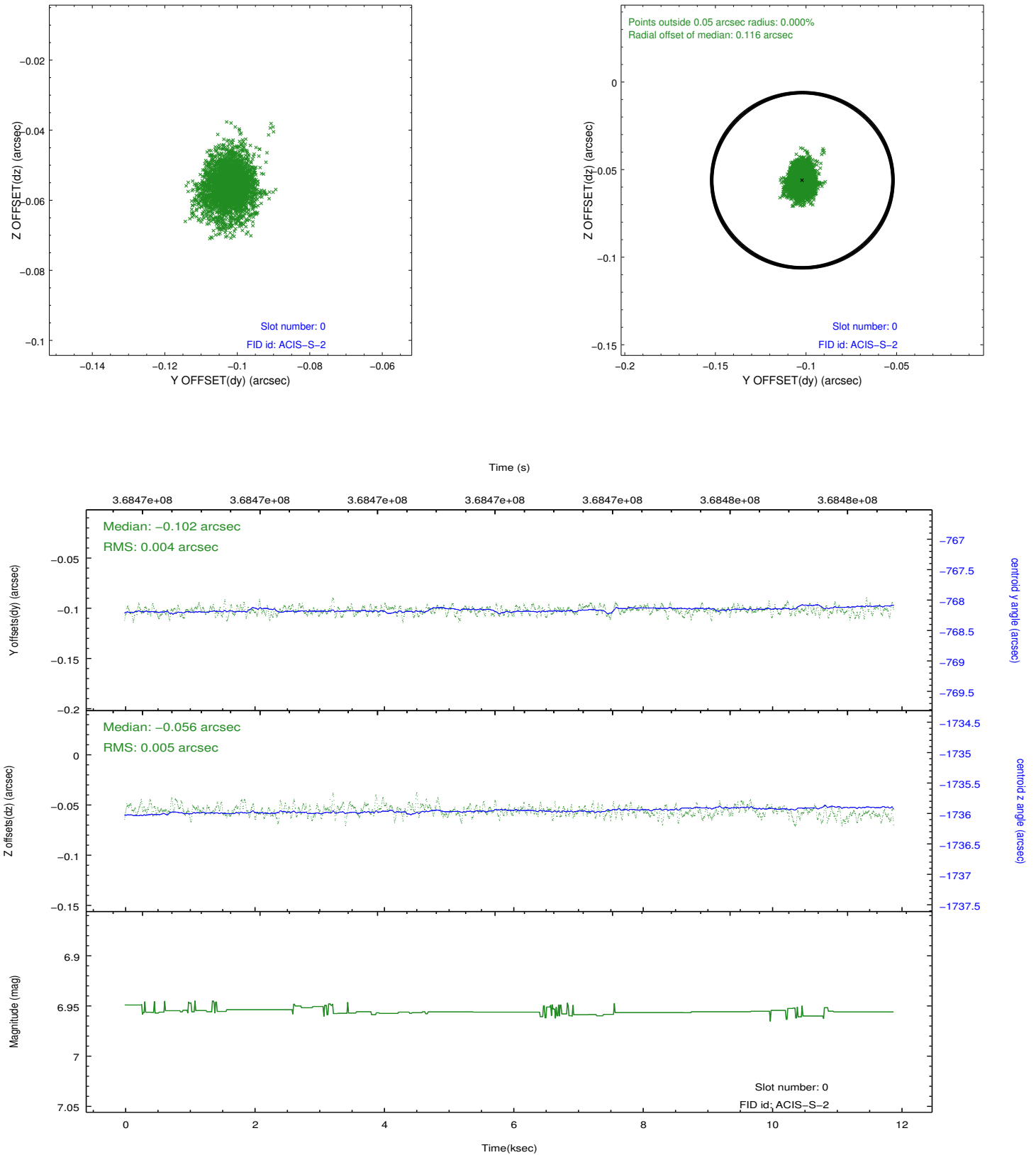


## 2.4.5 Slot 7

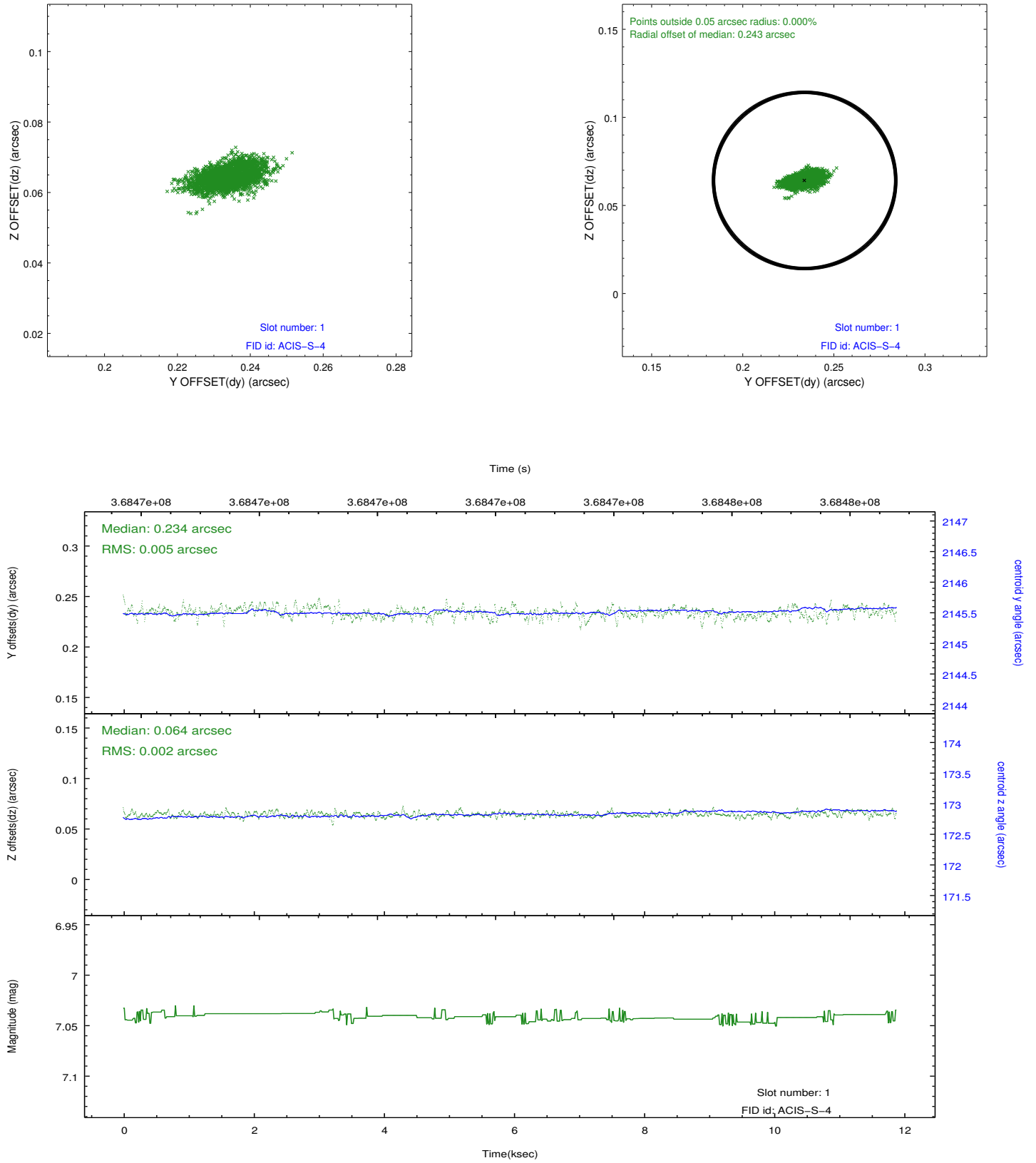


## 2.5 FID Slots

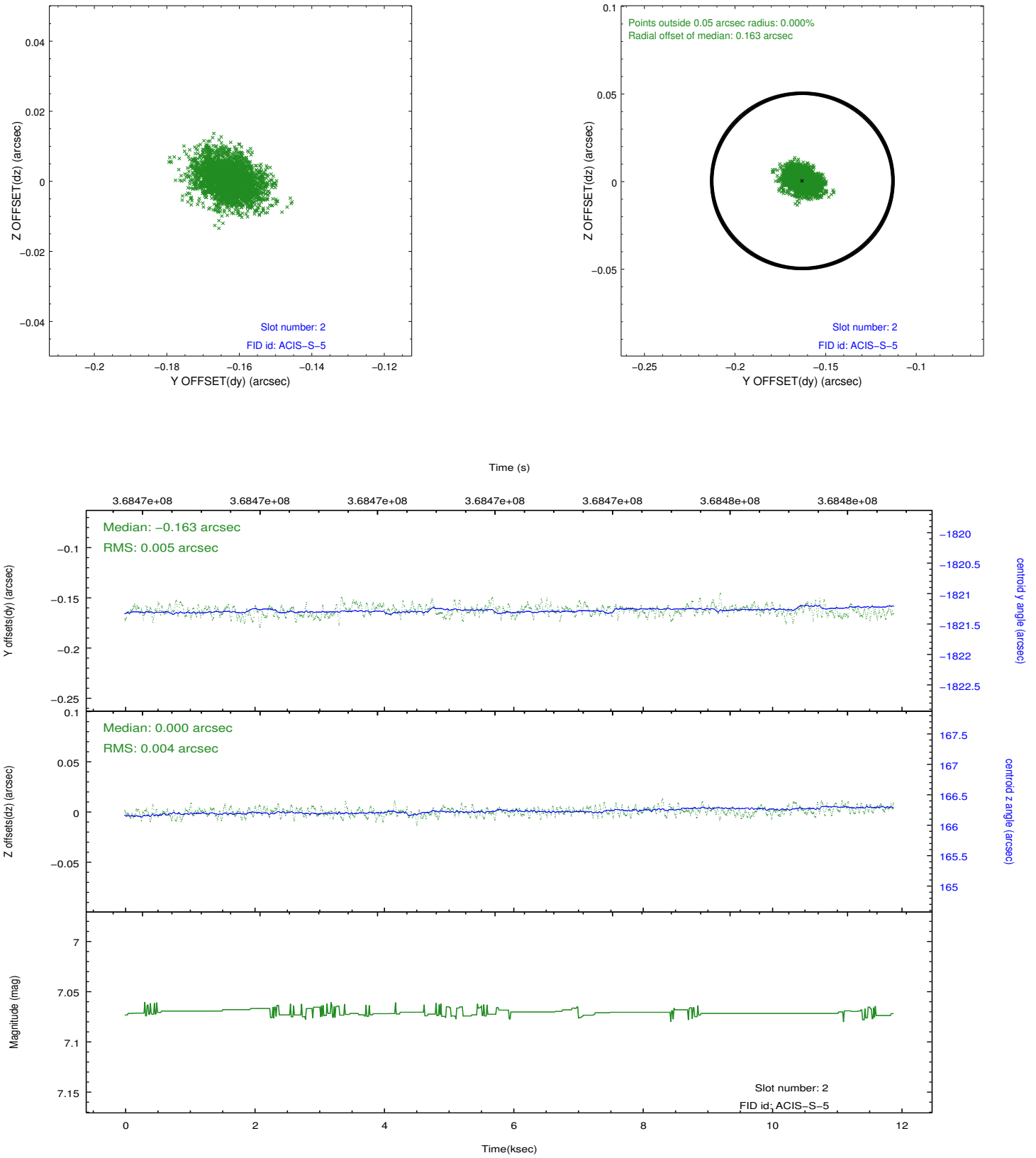
### 2.5.1 Slot 0



## 2.5.2 Slot 1



### 2.5.3 Slot 2



## A Summary

### A.1 Status

V&V Scientist	Jen Lauer
V&V Date (YYYY-MM-DD)	2012.06.15
V&V Edition	1
V&V Disposition and Status	OK
V&V Charge Time	11.882399881959

### A.2 Comments