

V&V Reference Report

L2 ASCDS Version : 8.4.5

Observation 11592 - L2 Version 2
Chandra X-Ray Center

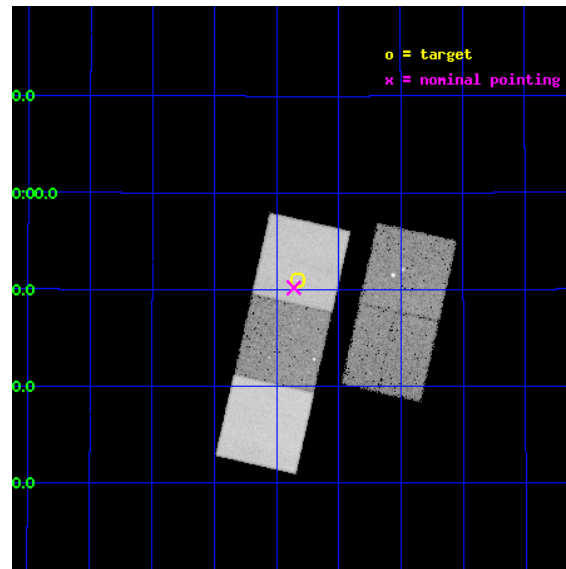
L2 Processing Date : Jul 4 2012

Contents

1	Front	2
2	OBI	3
2.1	OBI	3
2.1.1	Images	3
2.1.2	Bias	3
2.1.3	Parameters	4
2.1.4	Events	4
2.2	Compared Parameters	5
2.3	Aspect	6
2.4	Star Slots	9
2.4.1	Slot 3	9
2.4.2	Slot 4	10
2.4.3	Slot 5	11
2.4.4	Slot 6	12
2.4.5	Slot 7	13
2.5	FID Slots	14
2.5.1	Slot 0	14
2.5.2	Slot 1	15
2.5.3	Slot 2	16
A	Summary	17
A.1	Status	17
A.2	Comments	17

1 Front

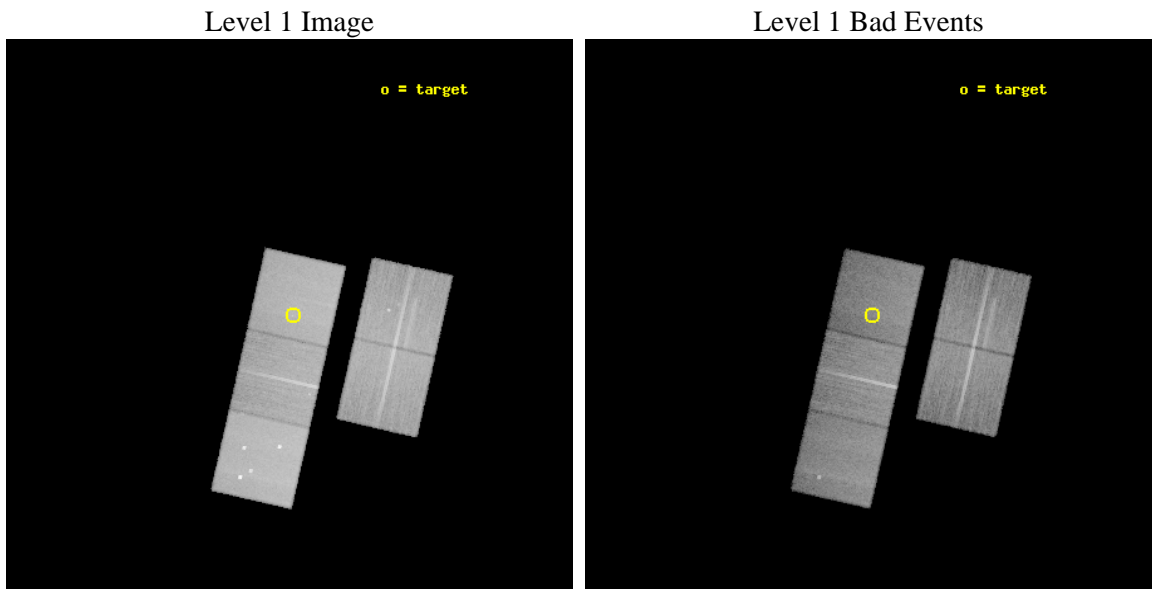
seq_num	702178	Sequence number
obs_id	11592	Observation id
title	Strong radio AGN in the center of galaxy groups	Proposal title
observer	Dr. Ming Sun	Principal investigator
object	C4-DR5-3843	Source name
dtcycle	0	
cycle	P	events from which exps? Prim/Second/Both
ra_targ	249.83375	Observer's specified target RA [deg]
dec_targ	29.849722	Observer's specified target Dec [deg]
ra_nom	249.84017292462	Nominal RA [deg]
dec_nom	29.836506470749	Nominal Dec [deg]
roll_nom	282.75986620861	Nominal Roll [deg]
revision	2	Processing version of data
ontime	30165.780810714	Sum of GTIs [s]
liveltime	29771.642676697	Livetime [s]
ontime2	30162.475680351	Sum of GTIs [s]
ontime3	30159.375729978	Sum of GTIs [s]
ontime5	30165.73977071	Sum of GTIs [s]
ontime6	30159.416849732	Sum of GTIs [s]
ontime7	30165.780810714	Sum of GTIs [s]
l2events	329945	Number of level 2 events



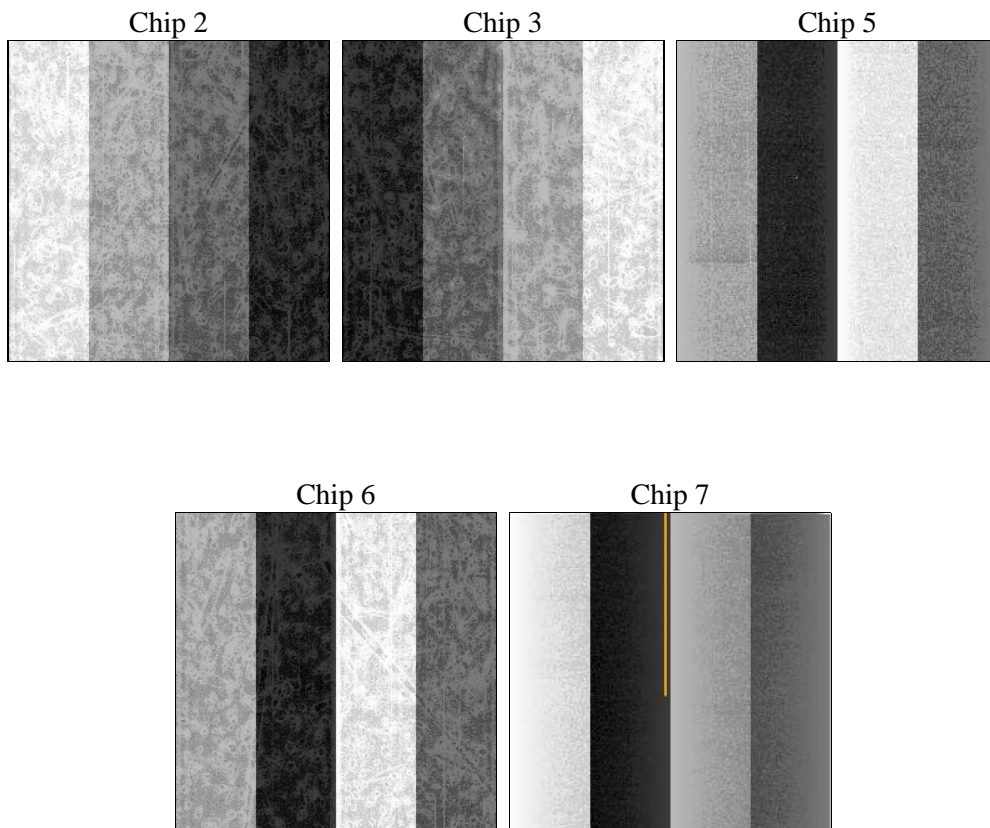
2 OBI

2.1 OBI

2.1.1 Images



2.1.2 Bias



2.1.3 Parameters

obi_num	0	Obi number	sched_exp_time	30123.681000	[s] Scheduled observation exposure time
ascdsver	8.4.5	Processing system revision	ontime	30165.780810714	Sum of GTIs [s]
caldsver	4.5.0	 	ontime2	30162.475680351	Sum of GTIs [s]
date	2012-07-04T02:58:17	Date and time of file creation	ontime3	30159.375729978	Sum of GTIs [s]
revision	2	Processing version of data	ontime5	30165.73977071	Sum of GTIs [s]
			ontime6	30159.416849732	Sum of GTIs [s]
			ontime7	30165.780810714	Sum of GTIs [s]
			l1events	1244915	Number of level 1 events

2.1.4 Events

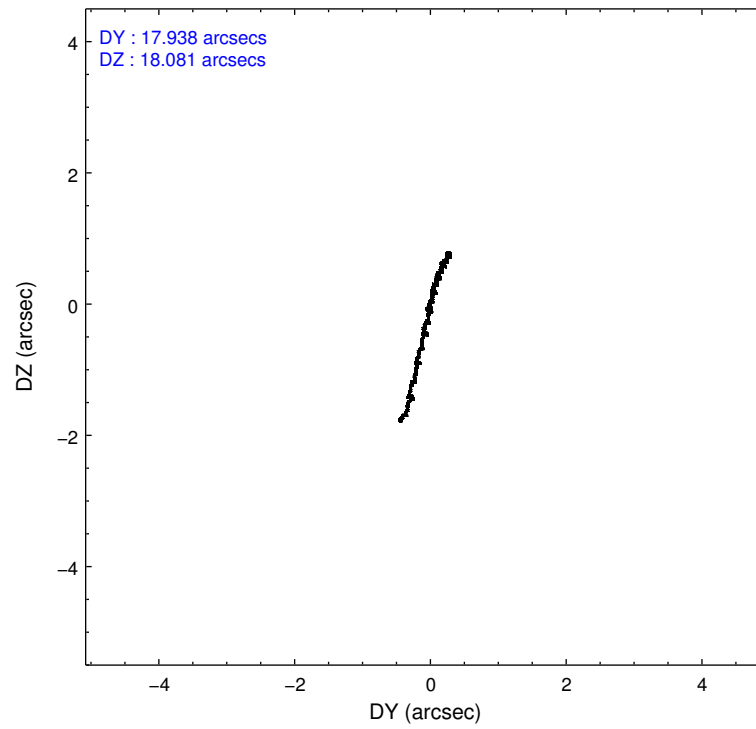
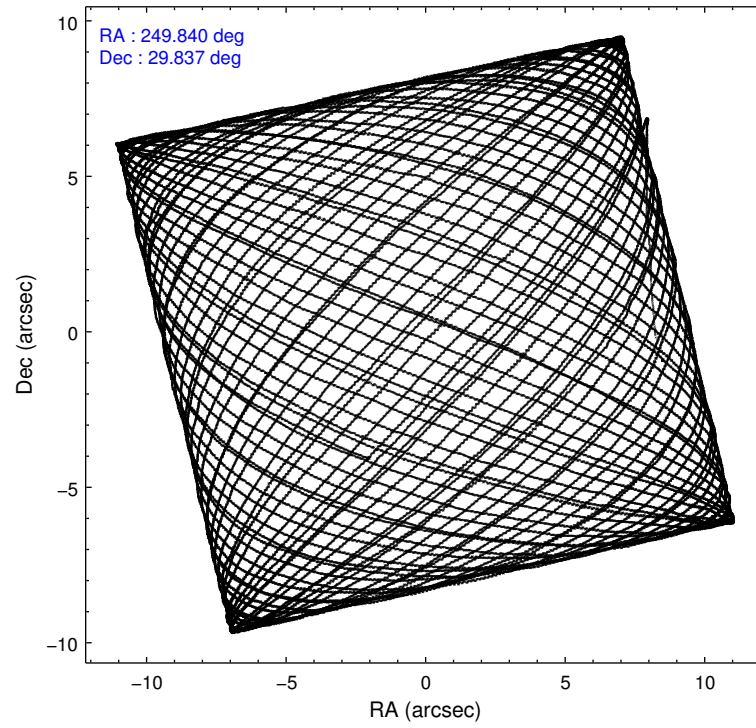
	ccd 2	ccd 3	ccd 5	ccd 6	ccd 7
level 1 events	212902	208496	336865	219560	267092
rejected events	190666	185388	168954	194048	147145
rejected %	89%	88%	50%	88%	55%

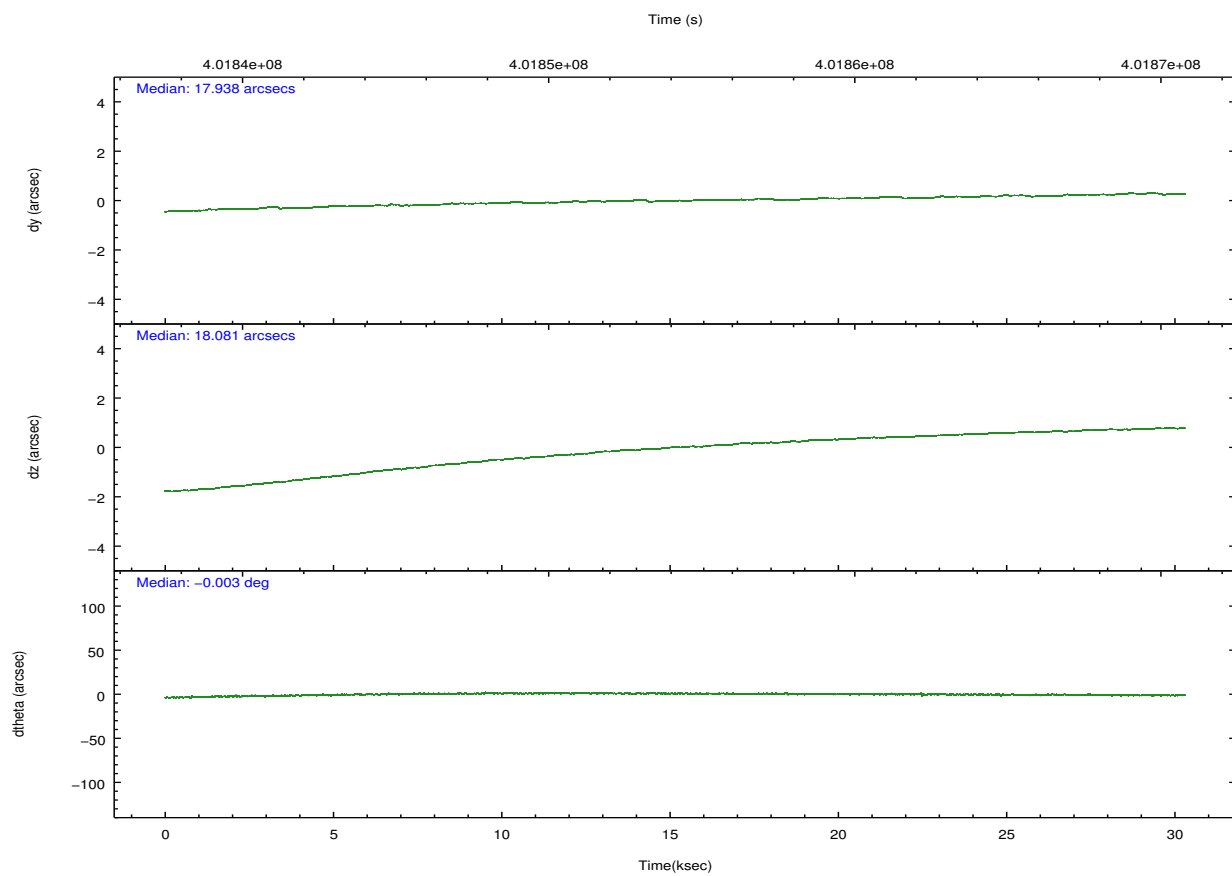
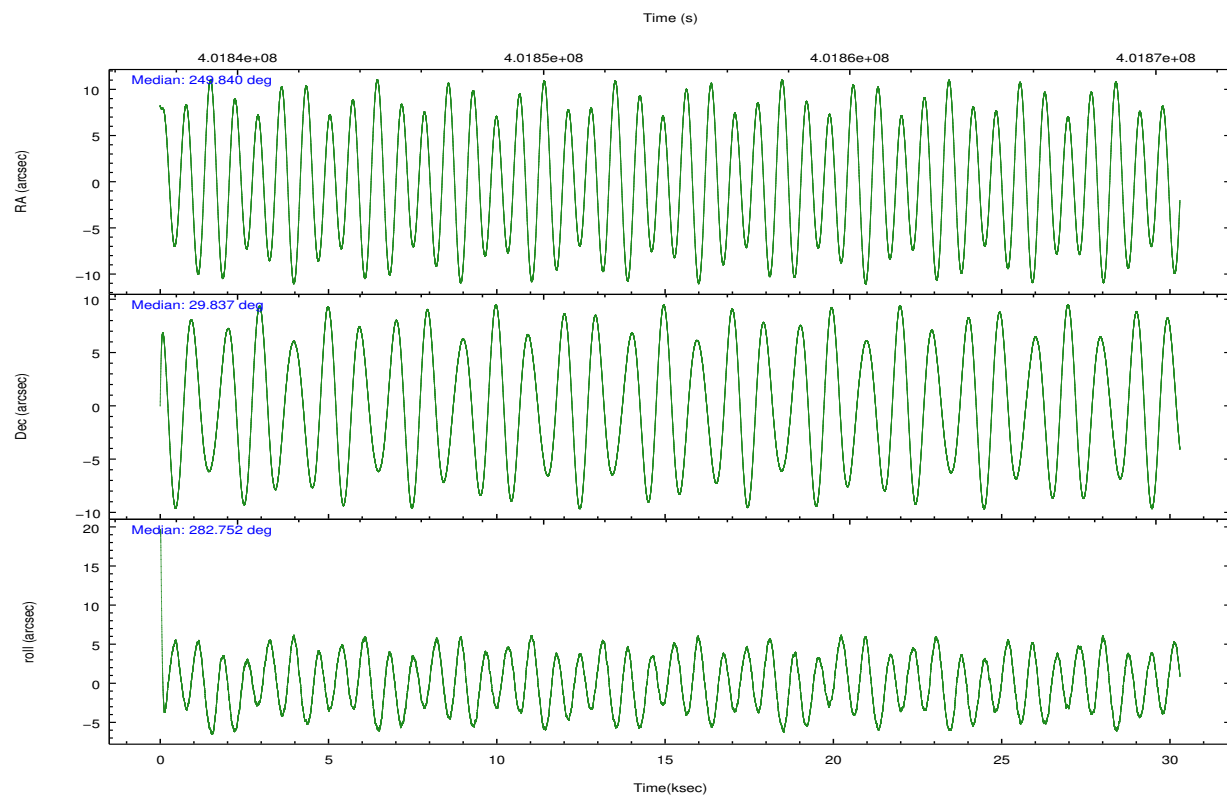
	ccd 2	ccd 3	ccd 5	ccd 6	ccd 7
grade 0 events	7983	8684	21269	9195	11241
	3%	4%	6%	4%	4%
grade 1 events	128	147	1459	129	354
	0%	0%	0%	0%	0%
grade 2 events	5368	5023	48967	5653	24435
	2%	2%	14%	2%	9%
grade 3 events	2370	2419	6020	2654	10617
	1%	1%	1%	1%	3%
grade 4 events	2373	2437	6053	2585	10521
	1%	1%	1%	1%	3%
grade 5 events	8035	9925	25041	9762	27607
	3%	4%	7%	4%	10%
grade 6 events	4149	4547	85620	5427	63144
	1%	2%	25%	2%	23%
grade 7 events	182496	175314	142436	184155	119173
	85%	84%	42%	83%	44%

2.2 Compared Parameters

Parameter	Planned	Actual	Parameter	Planned	Actual
Instrument	ACIS	ACIS	Obspar format version number	7	7
Detector	ACIS-23567	ACIS-23567	Obspar file type	PREDICTED	ACTUAL
Grating	NONE	NONE	Obspar update status	NONE	UPDATED
Data mode	VFAINT	VFAINT	CCD I0 on	N	N
Observation mode	POINTING	POINTING	CCD I1 on	N	N
[deg] Pointing RA	249.818460	249.8401729246244	CCD I2 on	O1	Y
[deg] Pointing Dec	29.856318	29.83650647074879	CCD I3 on	Y	Y
[deg] Pointing Roll	282.614035	282.7598662086073	CCD S0 on	N	N
[mm] SIM focus pos	-0.684267	-0.6828225247311905	CCD S1 on	Y	Y
[mm] SIM defocus	0	0.001444936568705701	CCD S2 on	Y	Y
[mm] SIM translation stage pos	-190.132523	-190.1400660498719	CCD S3 on	Y	Y
[mm] SIM translation stage offset	0	0.00754346686406393	CCD S4 on	N	N
[s] Observation start time (MET)	401839149.184000	401838133.2155	CCD S5 on	N	N
Observation start date	2010-09-25T21:58:03	2010-09-25T21:42:13	Number of optional ACIS chips dropped	0	0
[s] Observation end time (MET)	401869272.184000	401869498.72961	On-chip summing requested	N	N
Observation end date	2010-09-26T06:20:06	2010-09-26T06:24:58	Subarray requested	NONE	NONE
Read mode	TIMED	TIMED	Alternating exposures requested	N	N
			[s] Primary exposure time	0.000000	3.1

2.3 Aspect



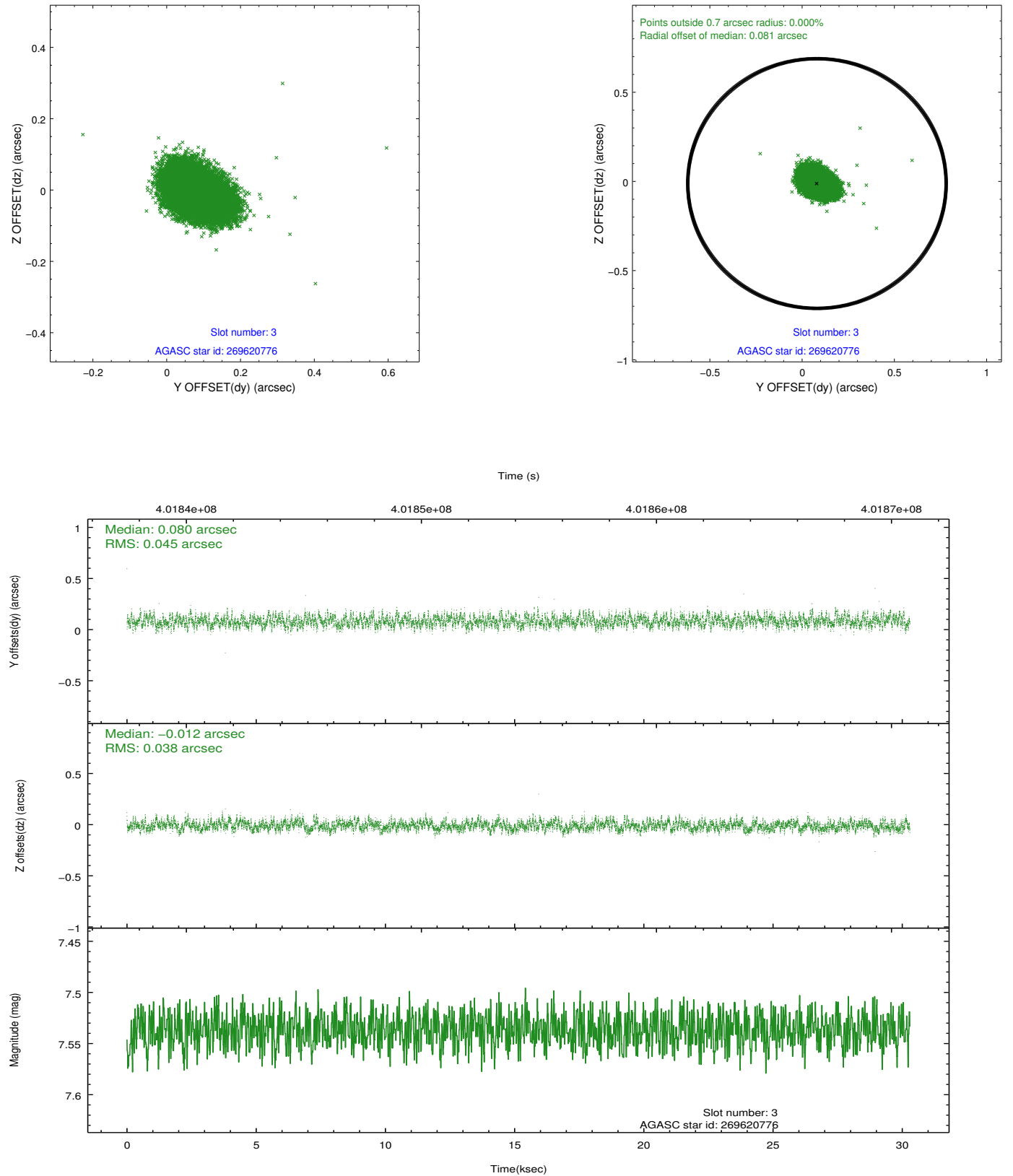


Slot Statistics

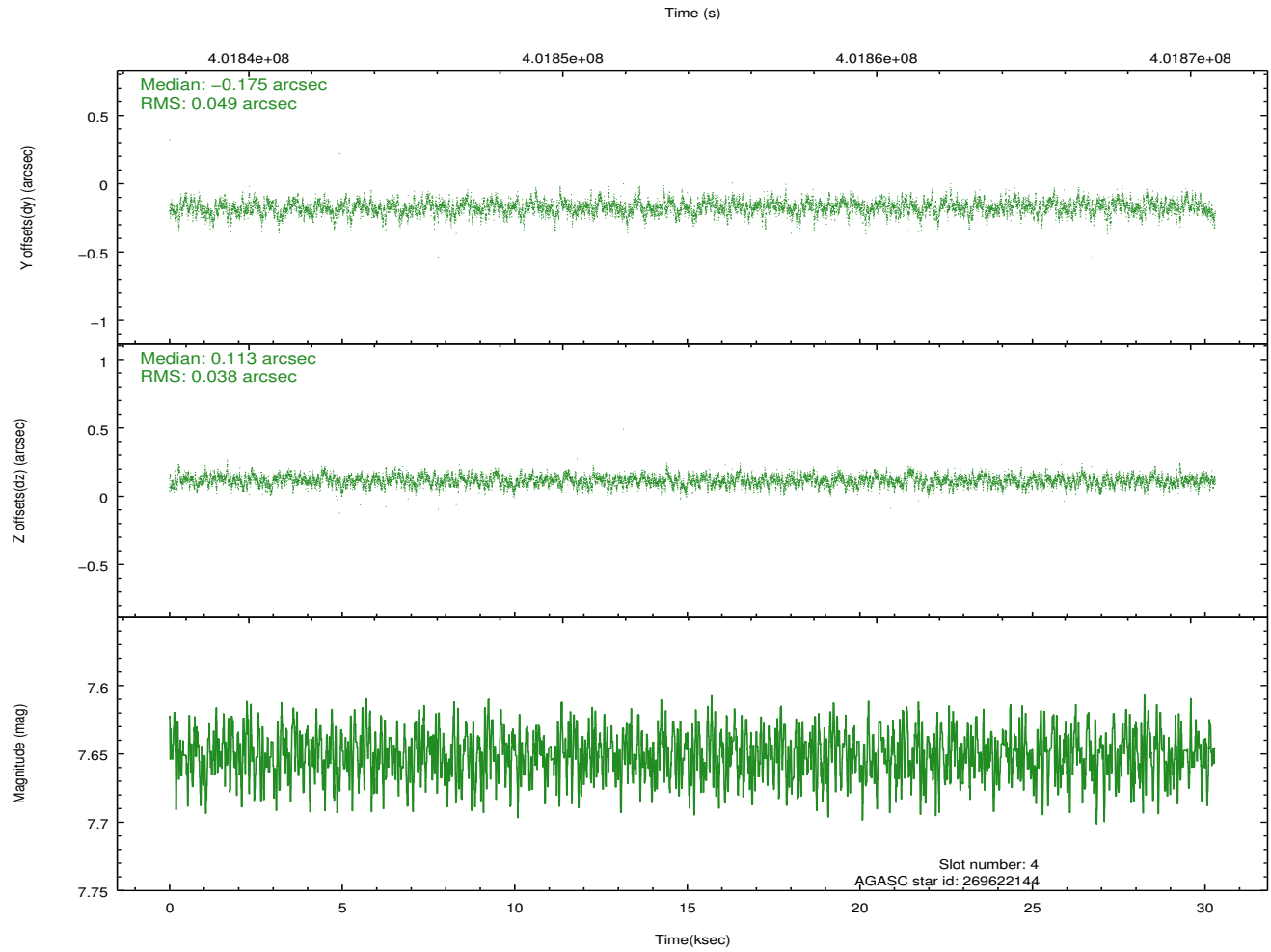
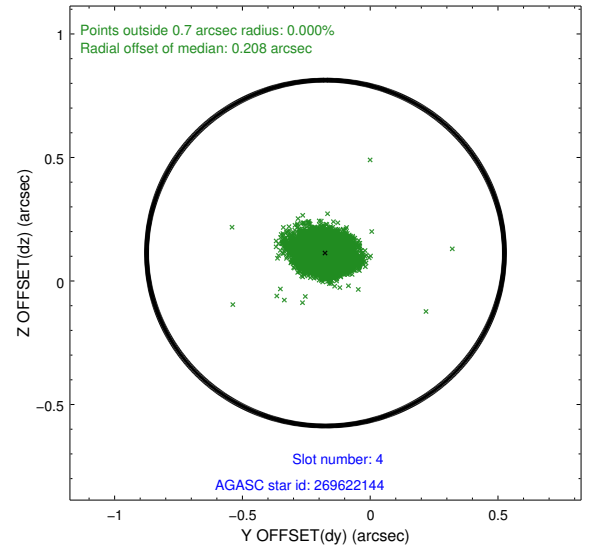
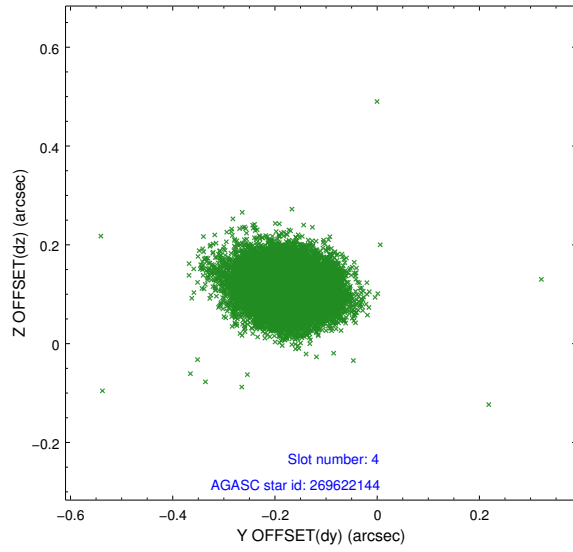
slot	status	id	mag	n_pts	med_dy	med_dz	dr1	dr2	ra	dec	mean_y	mean_z
0	FID	ACIS-S-2	6.89	7390	-0.069	-0.048	0.013	0.034	0.000000	0.000000	-771.06	-1739.37
1	FID	ACIS-S-4	6.97	7390	0.203	0.045	0.013	0.023	0.000000	0.000000	2142.49	169.08
2	FID	ACIS-S-5	7.01	7389	-0.169	0.010	0.011	0.032	0.000000	0.000000	-1823.88	162.86
3	GUIDE	269620776	7.54	14779	0.080	-0.012	0.063	0.102	249.567409	29.672490	475.92	-911.22
4	GUIDE	269622144	7.65	14773	-0.175	0.113	0.064	0.107	249.858625	29.218224	2269.45	-377.94
5	GUIDE	338442544	8.88	14776	0.105	-0.053	0.084	0.138	250.314164	30.148057	-690.88	1736.00
6	GUIDE	338316520	9.23	14772	-0.039	0.140	0.102	0.159	248.956143	30.223627	-1885.01	-2326.54
7	GUIDE	338438352	8.02	14776	0.025	-0.190	0.063	0.098	250.450430	30.423852	-1570.87	2361.52

2.4 Star Slots

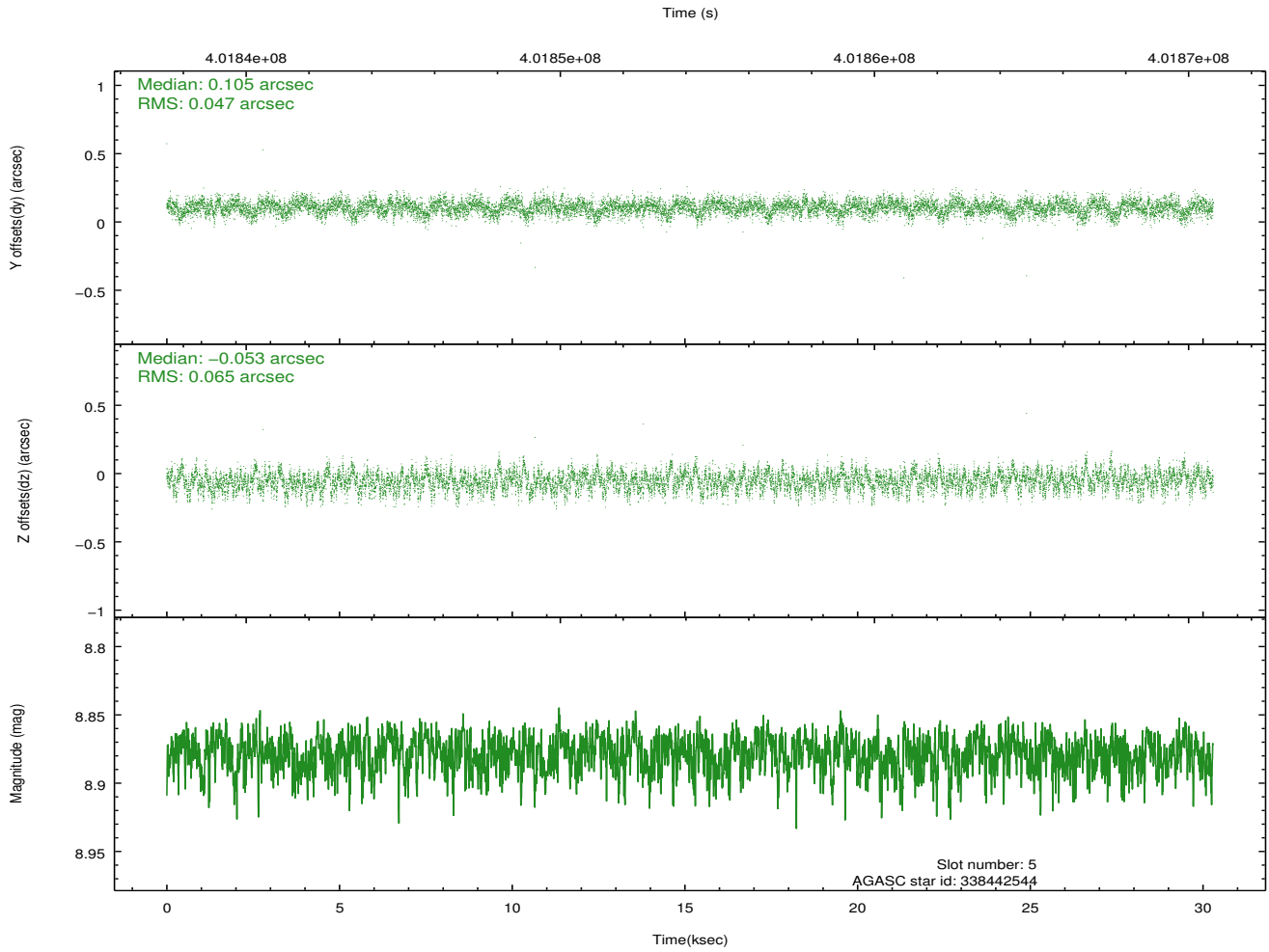
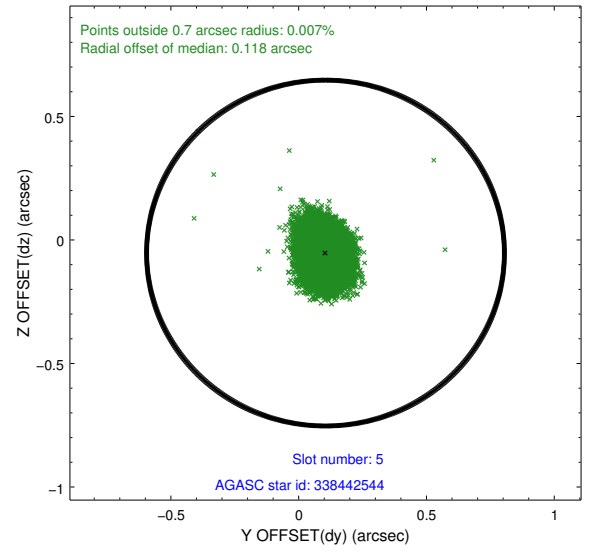
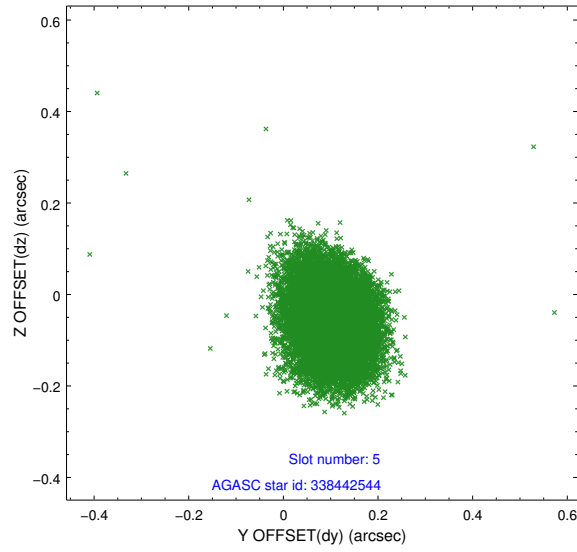
2.4.1 Slot 3



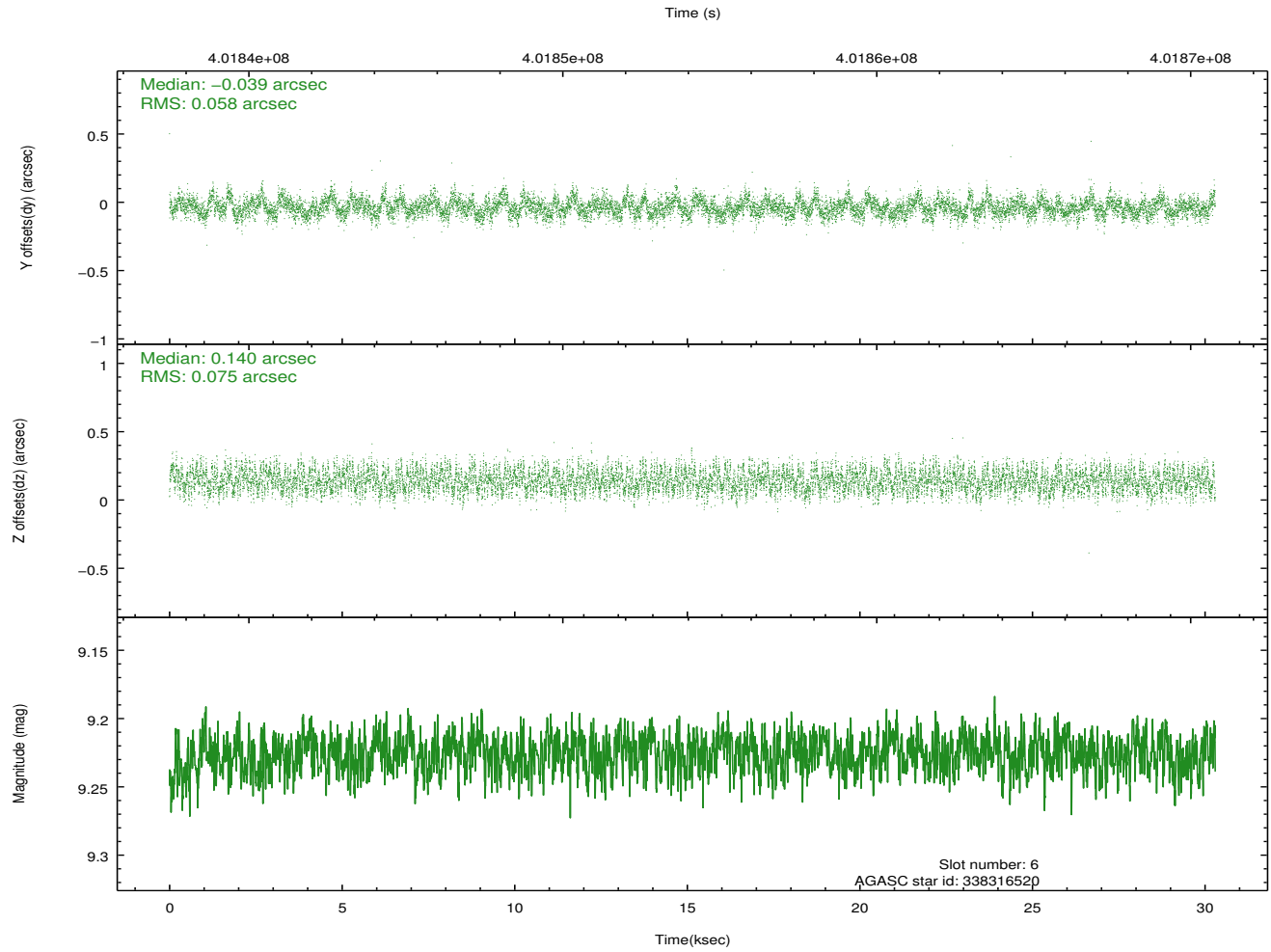
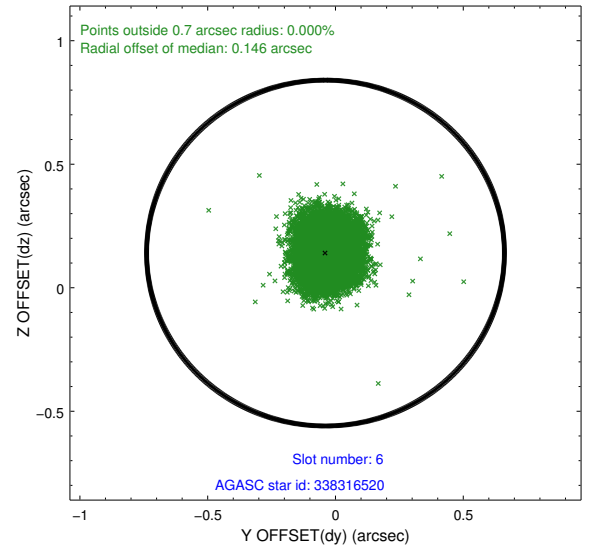
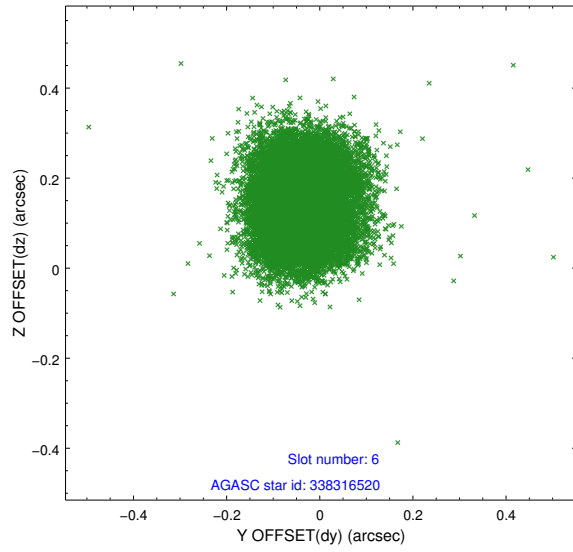
2.4.2 Slot 4



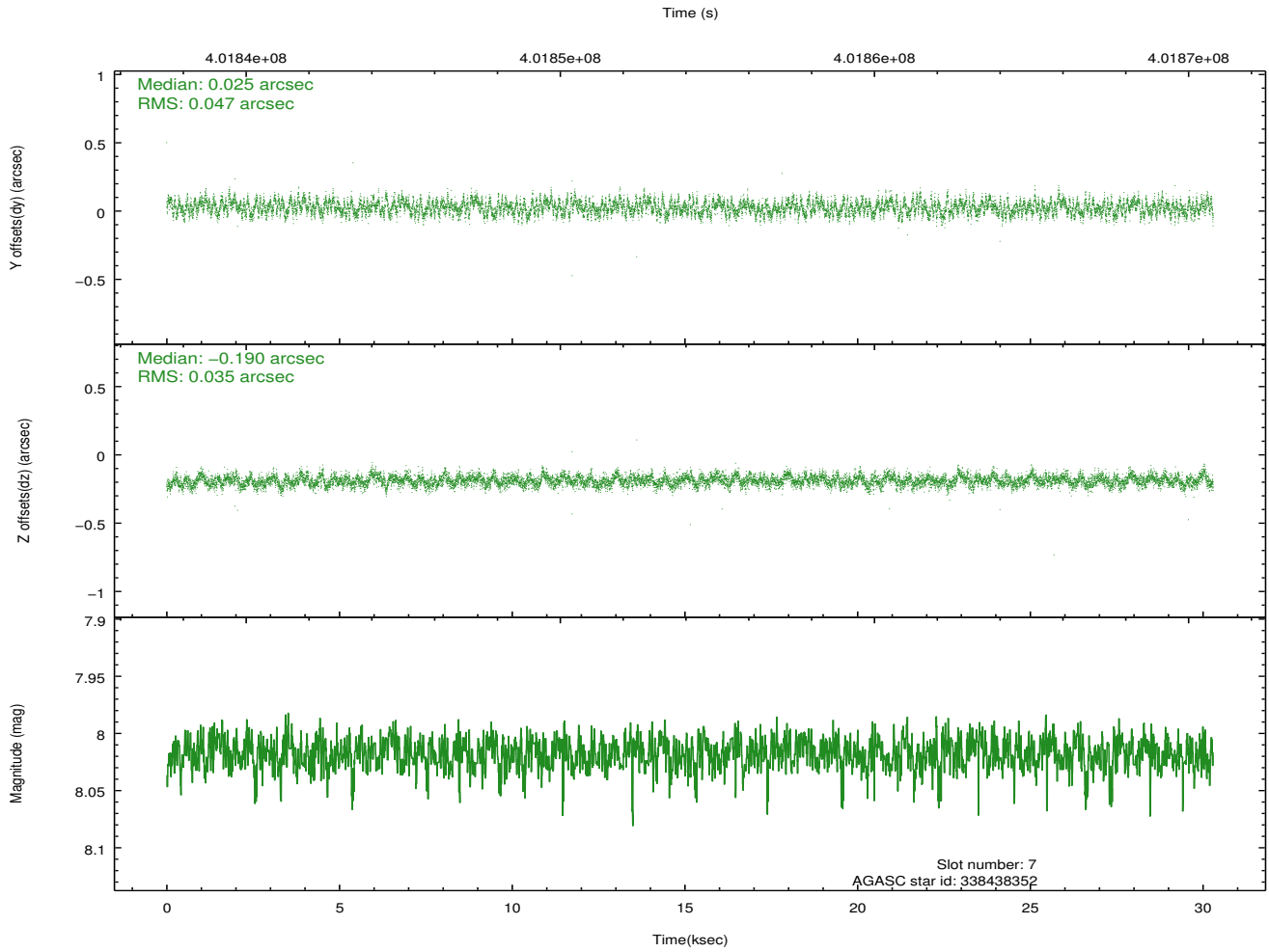
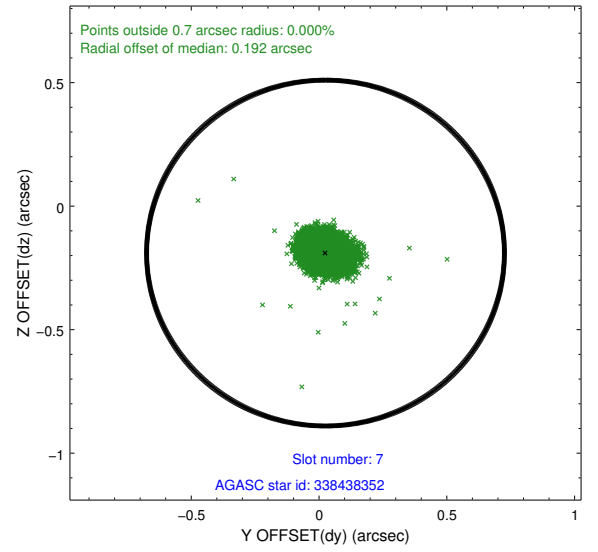
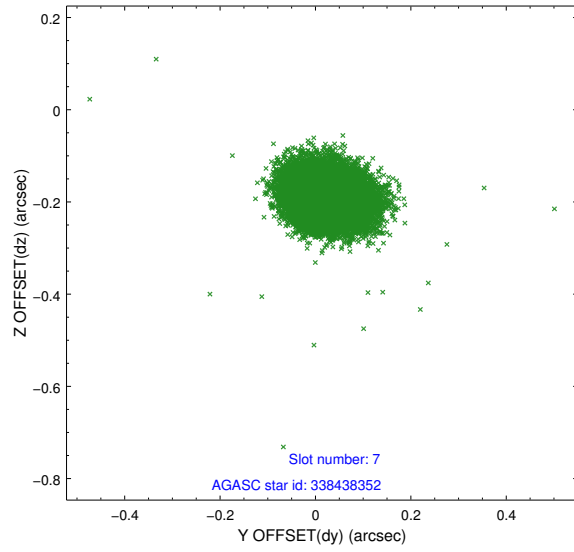
2.4.3 Slot 5



2.4.4 Slot 6

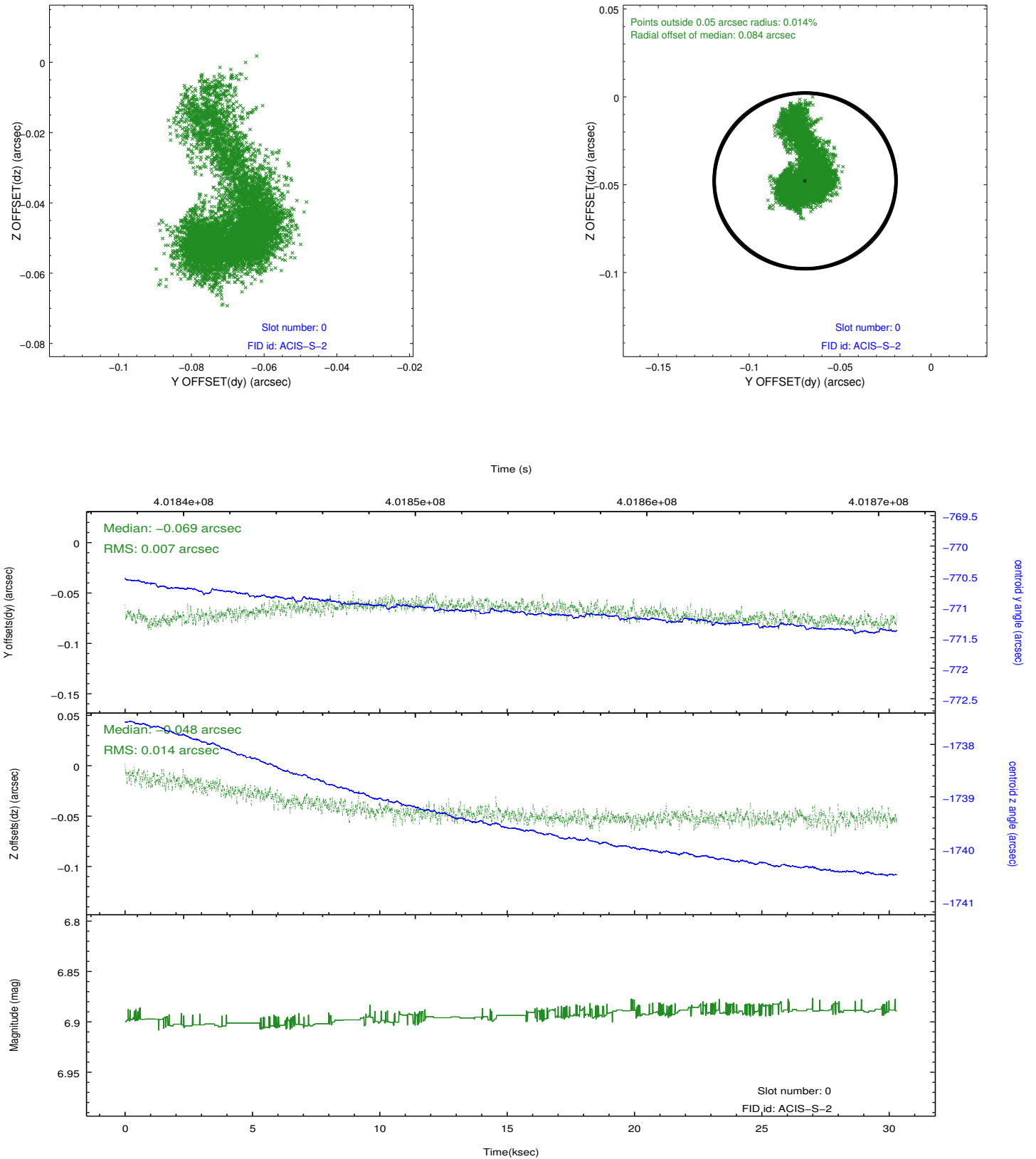


2.4.5 Slot 7

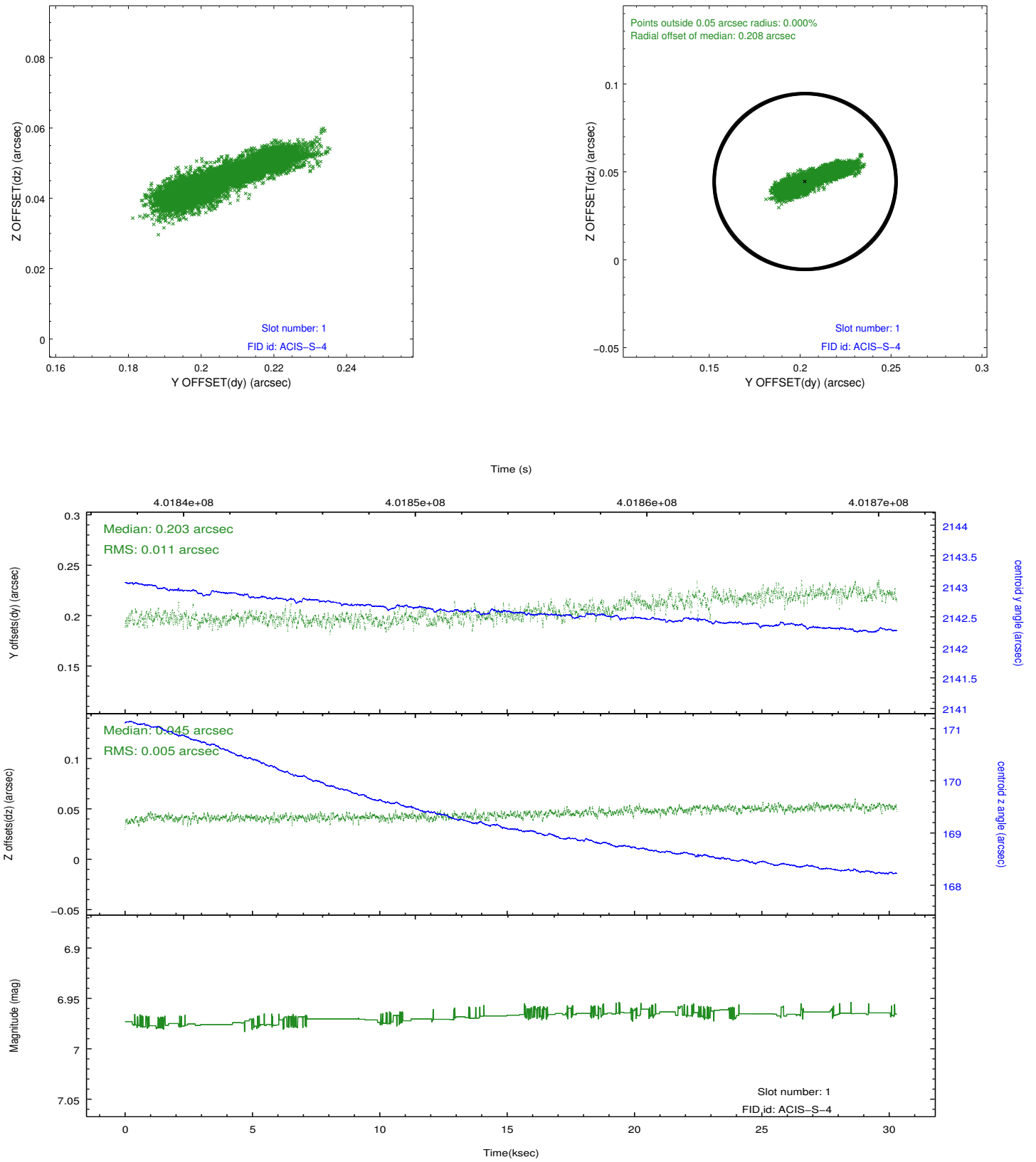


2.5 FID Slots

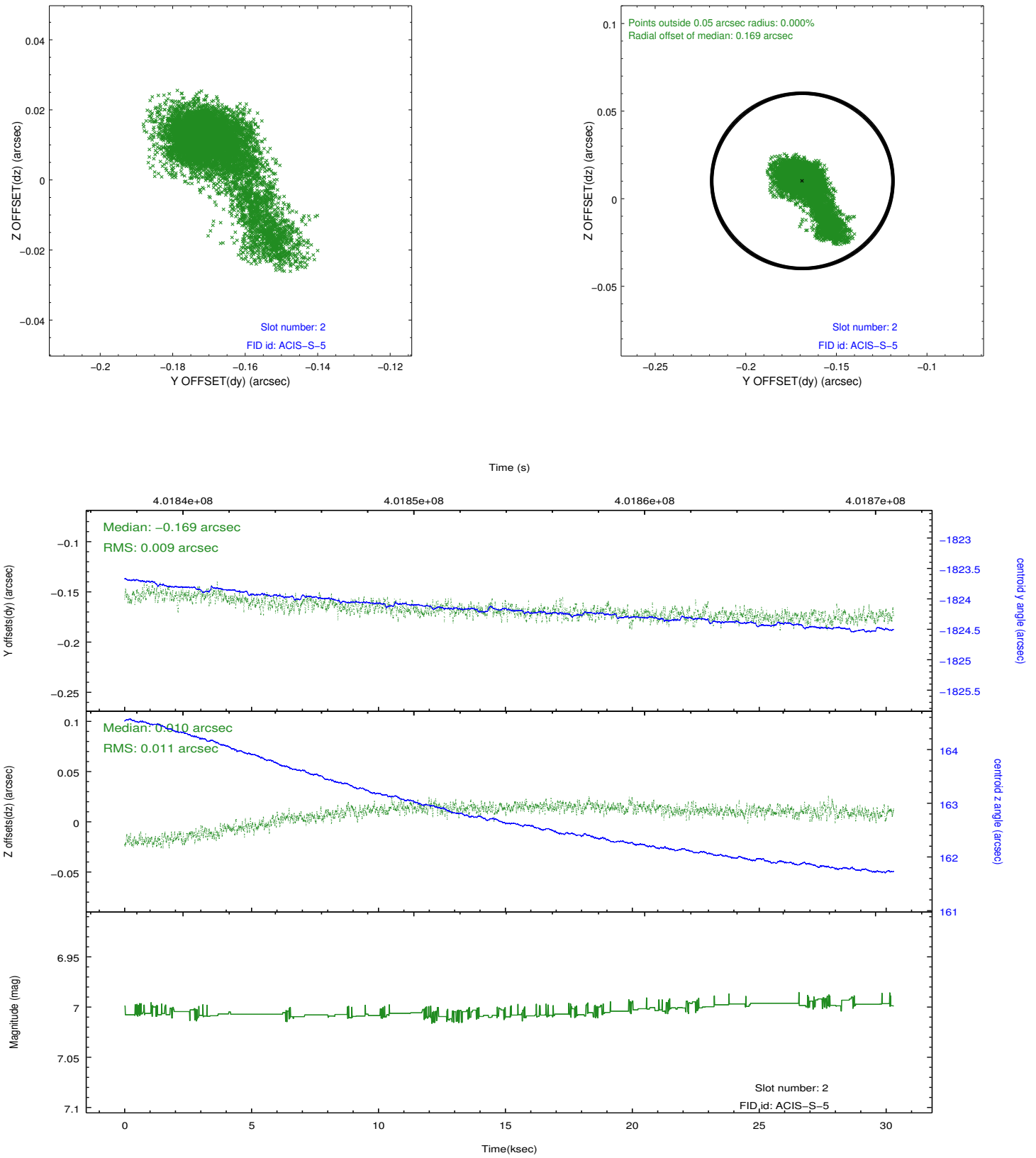
2.5.1 Slot 0



2.5.2 Slot 1



2.5.3 Slot 2



A Summary

A.1 Status

V&V Scientist	Beth Sundheim
V&V Date (YYYY-MM-DD)	2012.07.12
V&V Edition	1
V&V Disposition and Status	OK
V&V Charge Time	30.165780807793

A.2 Comments