

V&V Reference Report

L2 ASCDS Version : 8.4.5

Observation 11585 - L2 Version 3
Chandra X-Ray Center

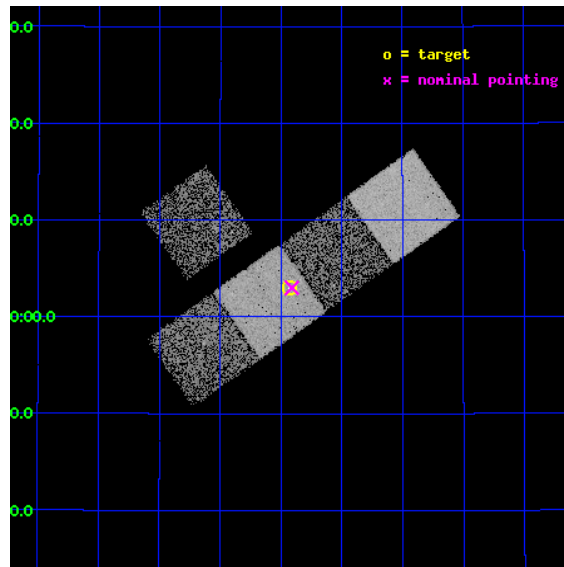
L2 Processing Date : Jun 25 2012

Contents

1	Front	2
2	OBI	3
2.1	OBI	3
2.1.1	Images	3
2.1.2	Bias	3
2.1.3	Parameters	4
2.1.4	Events	4
2.2	Compared Parameters	5
2.3	Aspect	6
2.4	Star Slots	9
2.4.1	Slot 3	9
2.4.2	Slot 4	10
2.4.3	Slot 5	11
2.4.4	Slot 6	12
2.4.5	Slot 7	13
2.5	FID Slots	14
2.5.1	Slot 0	14
2.5.2	Slot 1	15
2.5.3	Slot 2	16
A	Summary	17
A.1	Status	17
A.2	Comments	17

1 Front

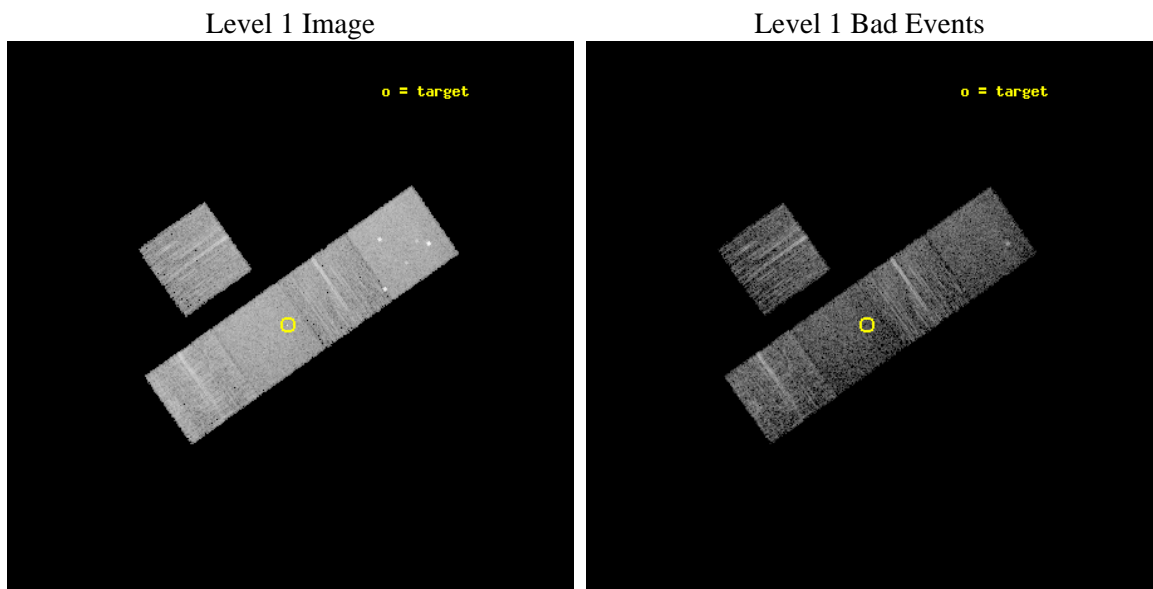
seq_num	702171	Sequence number
obs_id	11585	Observation id
title	X-ray Obscured Broad-line AGN	Proposal title
observer	Dr. Jennifer Donley	Principal investigator
object	AXJ131724+3203	Source name
dtcycle	0	
cycle	P	events from which exps? Prim/Second/Both
ra_targ	199.358333	Observer's specified target RA [deg]
dec_targ	32.049972	Observer's specified target Dec [deg]
ra_nom	199.3525965182	Nominal RA [deg]
dec_nom	32.050160600098	Nominal Dec [deg]
roll_nom	144.72650618578	Nominal Roll [deg]
revision	3	Processing version of data
ontime	5167.7000397444	Sum of GTIs [s]
livetime	5100.1802343197	Livetime [s]
ontime3	5167.7000397444	Sum of GTIs [s]
ontime5	5167.7000397444	Sum of GTIs [s]
ontime6	5167.7000397444	Sum of GTIs [s]
ontime7	5167.7000397444	Sum of GTIs [s]
ontime8	5167.7000397444	Sum of GTIs [s]
l2events	62255	Number of level 2 events



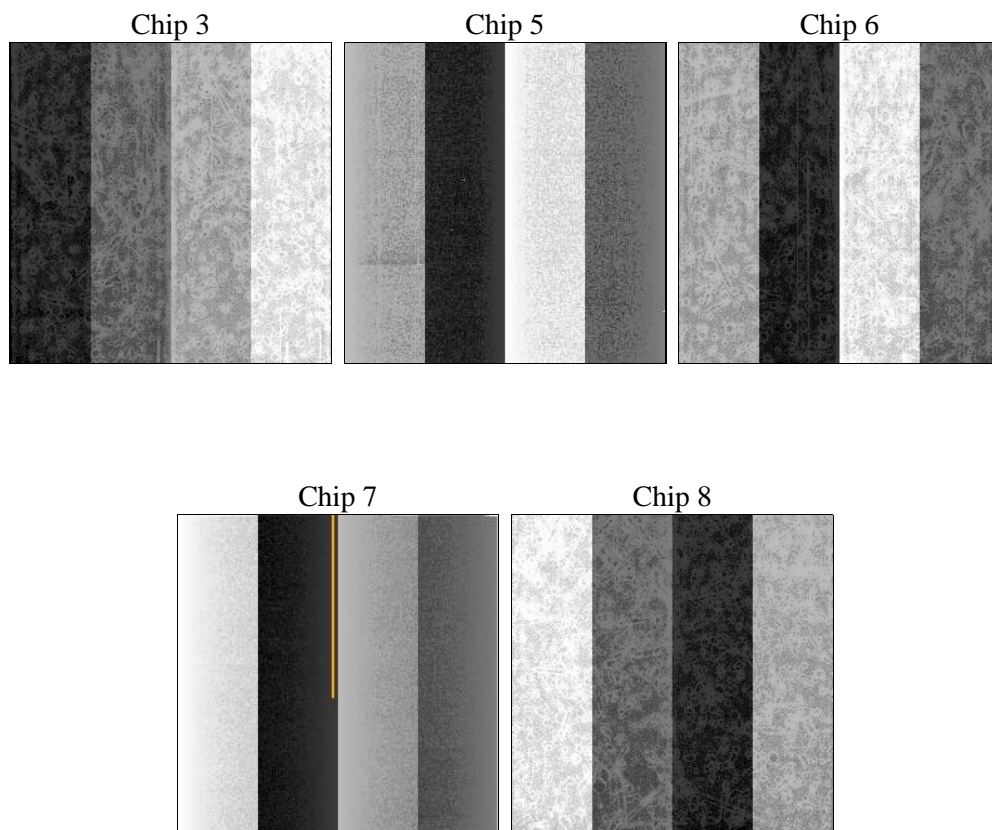
2 OBI

2.1 OBI

2.1.1 Images



2.1.2 Bias



2.1.3 Parameters

obi_num	0	Obi number	sched_exp_time	5000.000000	[s] Scheduled observation exposure time
ascdsver	8.4.5	Processing system revision	ontime	5167.7000397444	Sum of GTIs [s]
caldsver	4.4.10	 	ontime3	5167.7000397444	Sum of GTIs [s]
date	2012-06-25T20:20:34	Date and time of file creation	ontime5	5167.7000397444	Sum of GTIs [s]
revision	3	Processing version of data	ontime6	5167.7000397444	Sum of GTIs [s]
			ontime7	5167.7000397444	Sum of GTIs [s]
			ontime8	5167.7000397444	Sum of GTIs [s]
			l1events	265792	Number of level 1 events

2.1.4 Events

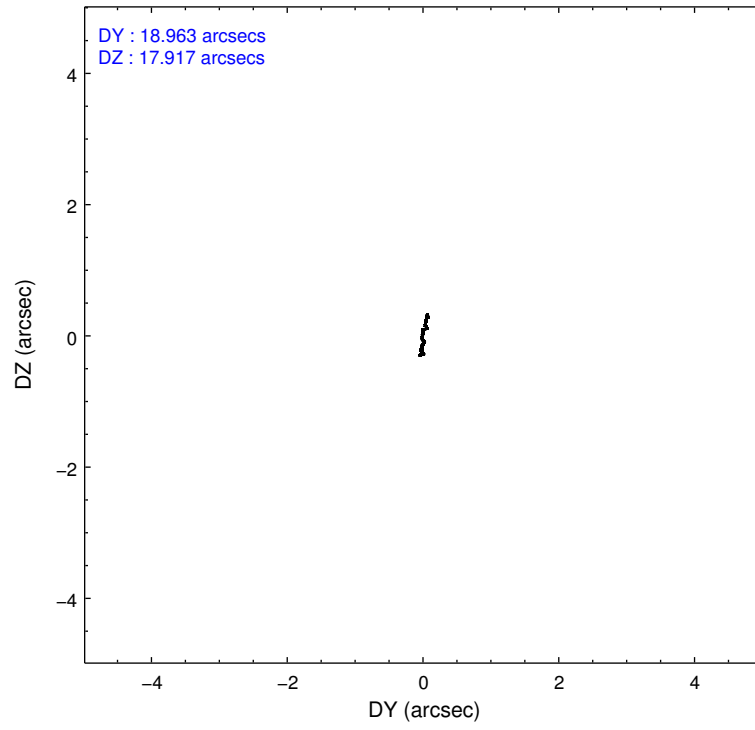
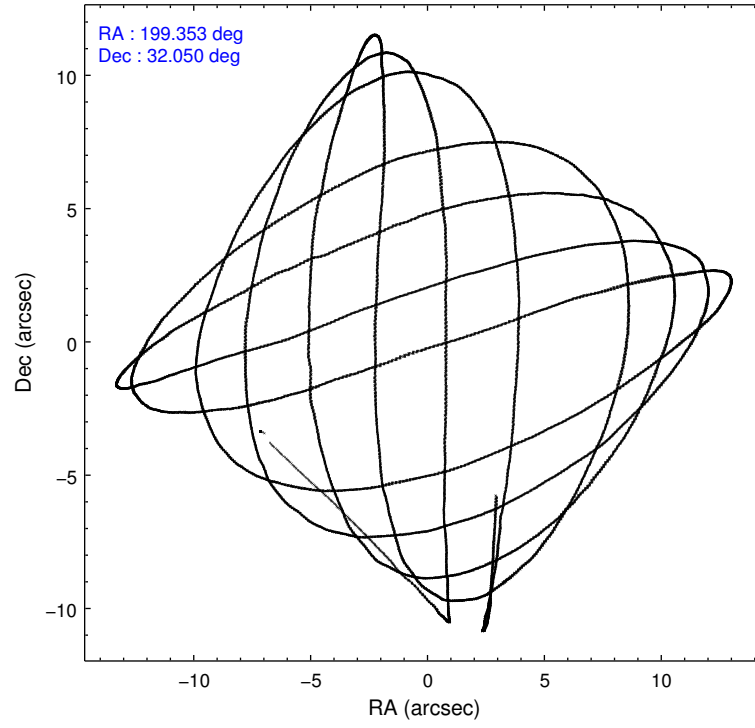
	ccd 3	ccd 5	ccd 6	ccd 7	ccd 8
level 1 events	42074	68012	46415	53099	56192
rejected events	37983	35721	41958	30695	42855
rejected %	90%	52%	90%	57%	76%

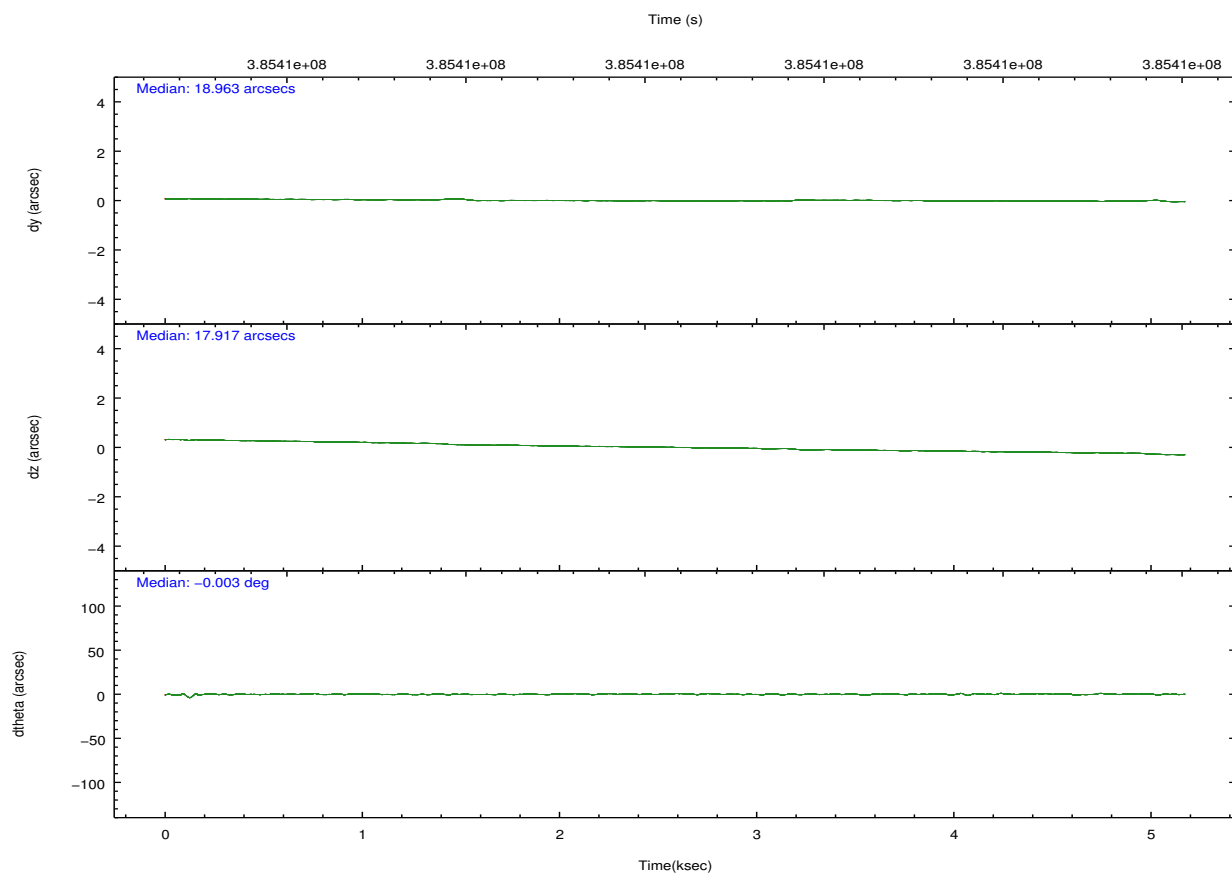
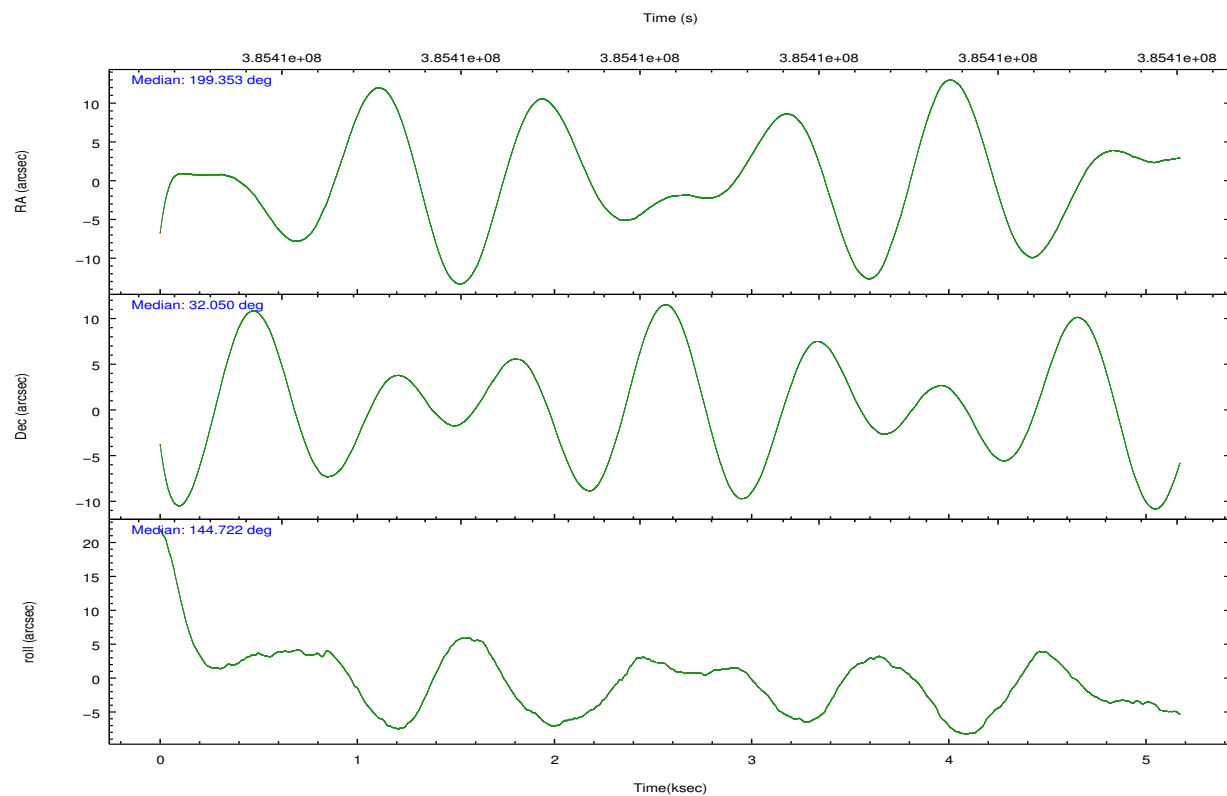
	ccd 3	ccd 5	ccd 6	ccd 7	ccd 8
grade 0 events	1560	4335	1643	2272	4181
	3%	6%	3%	4%	7%
grade 1 events	21	173	25	80	33
	0%	0%	0%	0%	0%
grade 2 events	933	10581	1163	5033	3414
	2%	15%	2%	9%	6%
grade 3 events	490	1460	508	2168	1576
	1%	2%	1%	4%	2%
grade 4 events	513	1565	525	2163	1446
	1%	2%	1%	4%	2%
grade 5 events	1954	5111	1959	5423	2783
	4%	7%	4%	10%	4%
grade 6 events	948	17126	1030	12710	3666
	2%	25%	2%	23%	6%
grade 7 events	35655	27661	39562	23250	39093
	84%	40%	85%	43%	69%

2.2 Compared Parameters

Parameter	Planned	Actual	Parameter	Planned	Actual
Instrument	ACIS	ACIS	Obspar format version number	7	7
Detector	ACIS-35678	ACIS-35678	Obspar file type	PREDICTED	ACTUAL
Grating	NONE	NONE	Obspar update status	NONE	UPDATED
Data mode	VFAINT	VFAINT	CCD I0 on	N	N
Observation mode	POINTING	POINTING	CCD I1 on	N	N
[deg] Pointing RA	199.384778	199.3525965182021	CCD I2 on	N	N
[deg] Pointing Dec	32.048130	32.0501606000979	CCD I3 on	O1	Y
[deg] Pointing Roll	144.552781	144.7265061857828	CCD S0 on	N	N
[mm] SIM focus pos	-0.684267	-0.6828225247311905	CCD S1 on	Y	Y
[mm] SIM defocus	0	0.001444936568705701	CCD S2 on	Y	Y
[mm] SIM translation stage pos	-190.132523	-190.1425803651734	CCD S3 on	Y	Y
[mm] SIM translation stage offset	0	0.01005778216563158	CCD S4 on	Y	Y
[s] Observation start time (MET)	385408749.184000	385407533.56448	CCD S5 on	N	N
Observation start date	2010-03-19T17:58:03	2010-03-19T17:38:53	Number of optional ACIS chips dropped	0	0
[s] Observation end time (MET)	385413749.184000	385414069.98982	On-chip summing requested	N	N
Observation end date	2010-03-19T19:21:23	2010-03-19T19:27:49	Subarray requested	NONE	NONE
Read mode	TIMED	TIMED	Alternating exposures requested	N	N
			[s] Primary exposure time	0.000000	3.1

2.3 Aspect



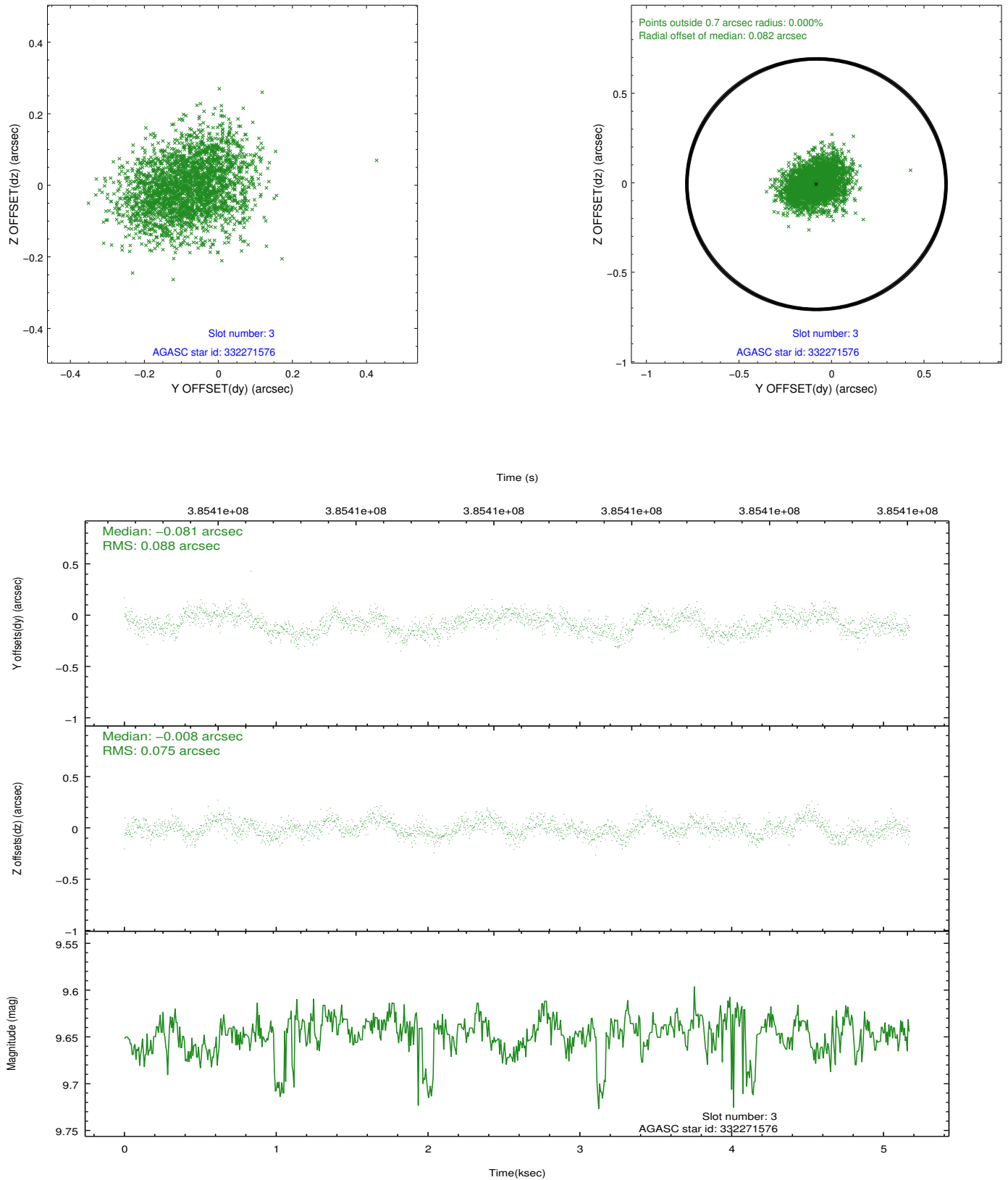


Slot Statistics

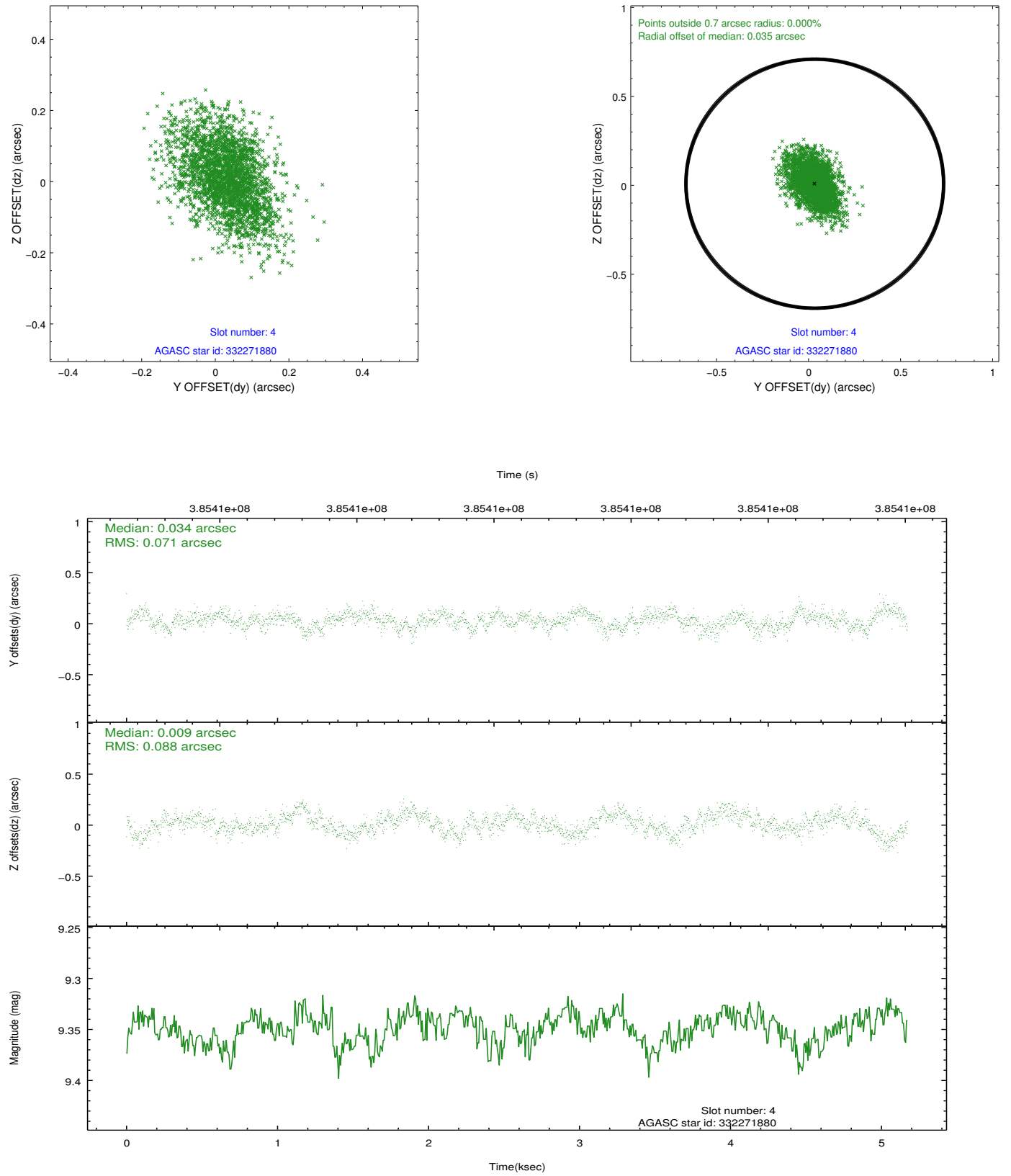
slot	status	id	mag	n_pts	med_dy	med_dz	dr1	dr2	ra	dec	mean_y	mean_z
0	FID	ACIS-S-2	6.92	1262	-0.070	-0.046	0.007	0.012	0.000000	0.000000	-772.16	-1739.36
1	FID	ACIS-S-4	6.99	1262	0.212	0.046	0.006	0.013	0.000000	0.000000	2140.90	167.93
2	FID	ACIS-S-5	7.02	1262	-0.173	0.009	0.007	0.011	0.000000	0.000000	-1823.56	162.99
3	GUIDE	332271576	9.65	2503	-0.081	-0.008	0.124	0.194	198.510743	31.924579	1924.37	1902.46
4	GUIDE	332271880	9.35	2519	0.034	0.009	0.119	0.201	199.135537	31.533059	-452.23	1953.87
5	GUIDE	332272104	8.15	2523	-0.098	0.137	0.100	0.159	199.549727	31.630301	-1284.07	932.73
6	GUIDE	332277032	9.73	2524	0.015	-0.121	0.125	0.197	198.857401	32.308804	1853.61	163.11
7	GUIDE	332662248	10.23	2517	0.128	-0.020	0.221	0.349	199.445168	32.604623	1014.11	-1738.36

2.4 Star Slots

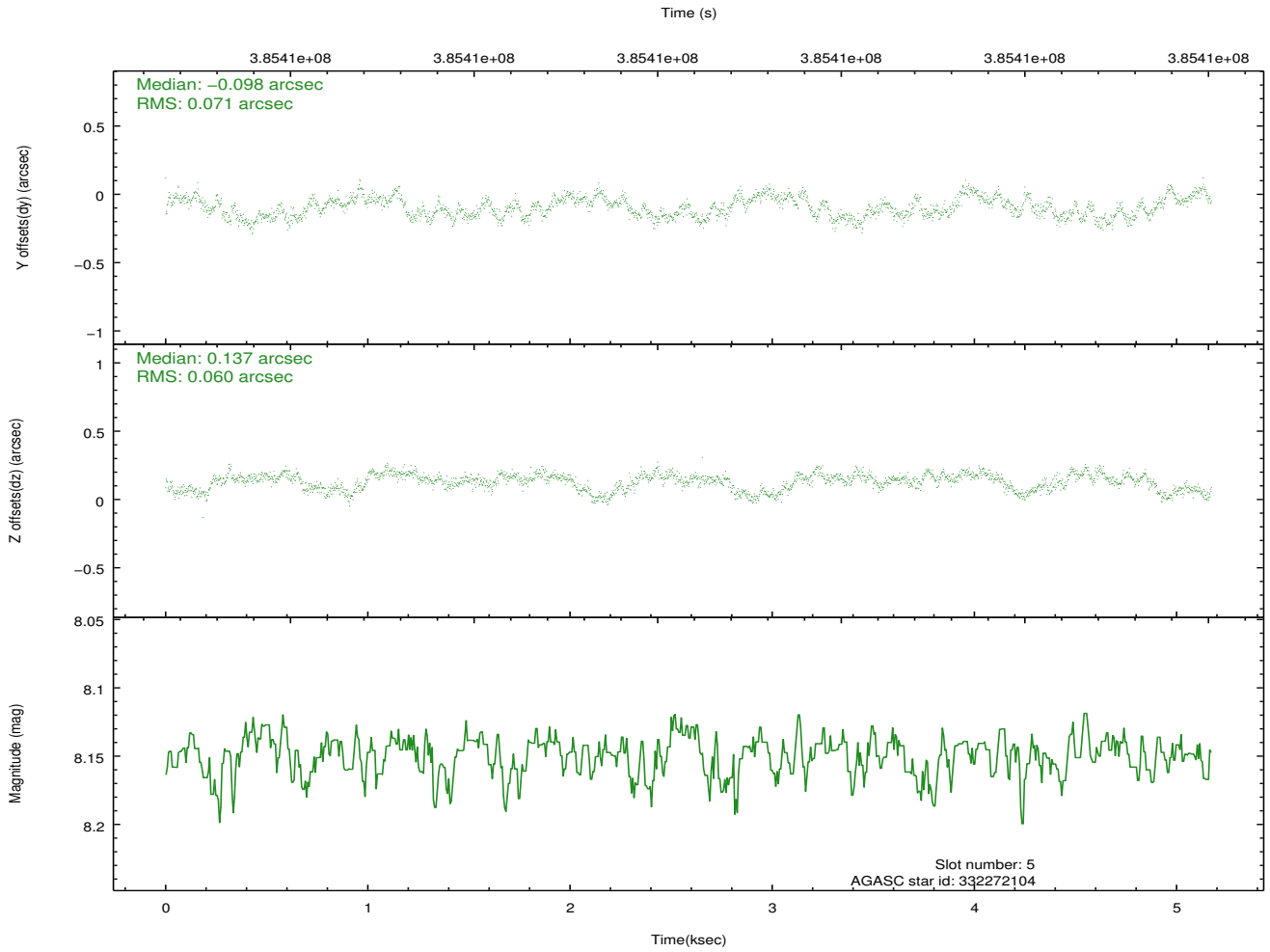
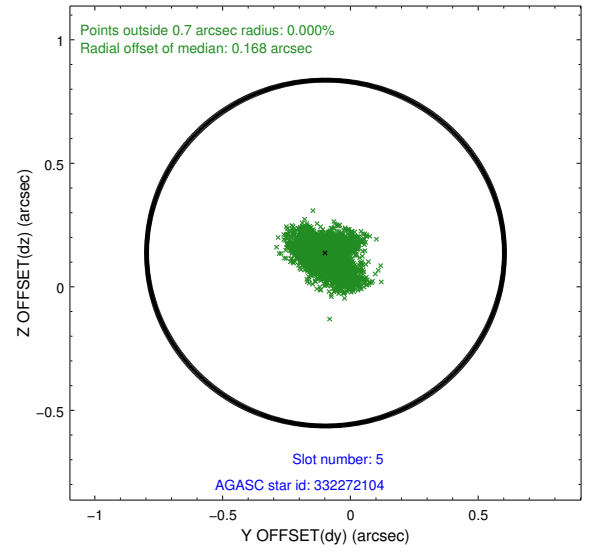
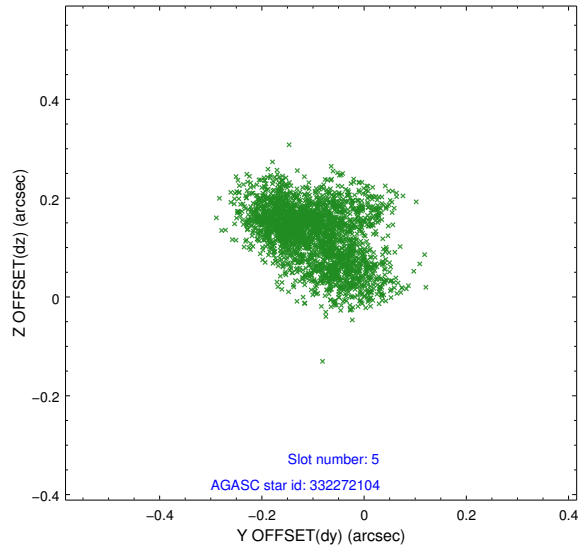
2.4.1 Slot 3



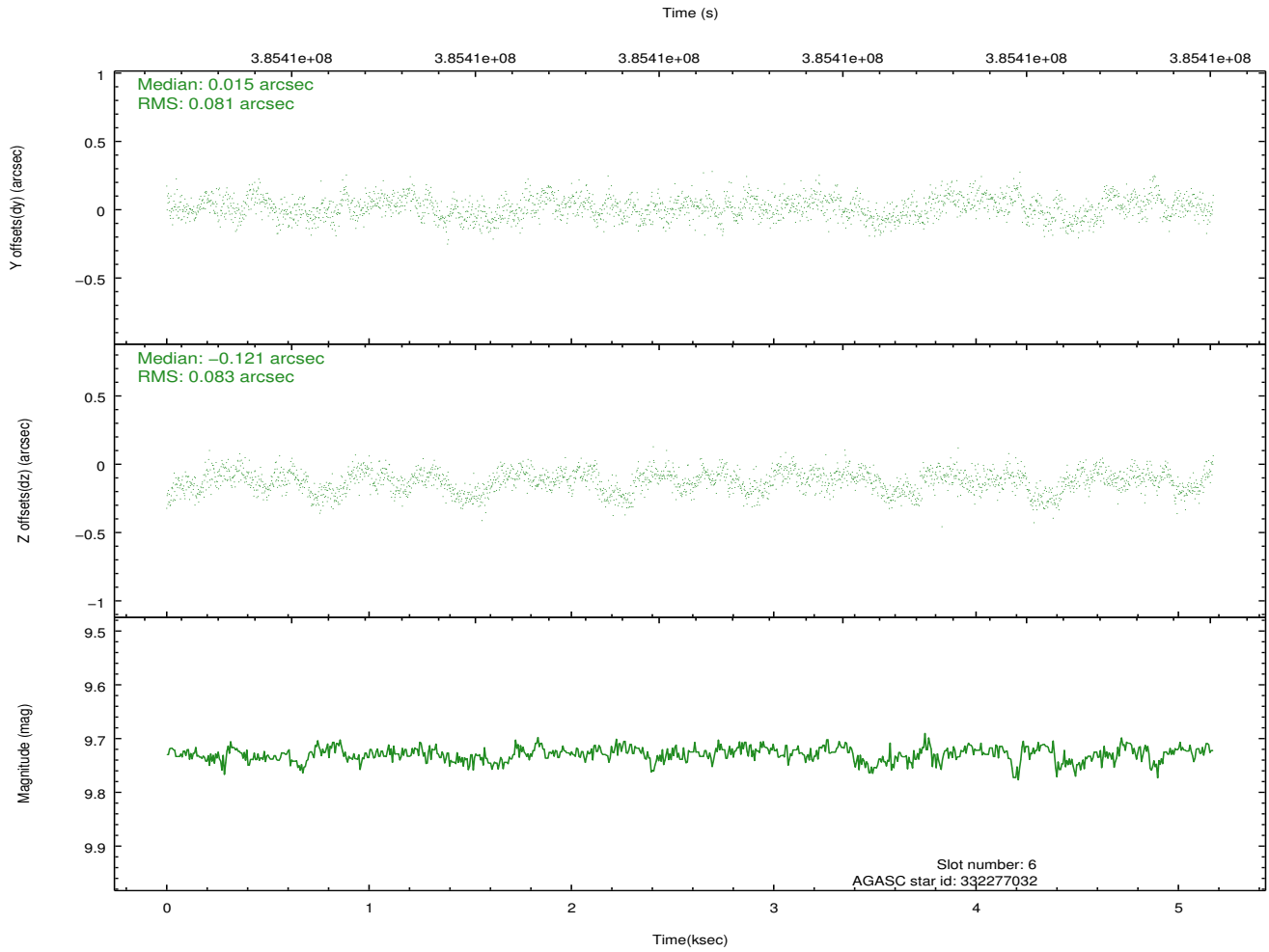
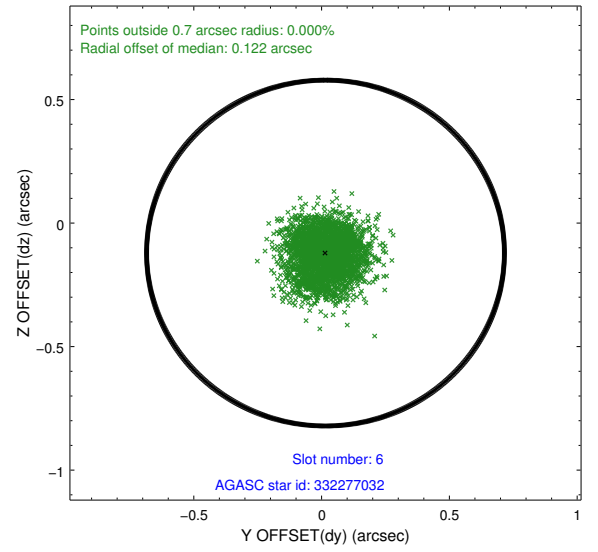
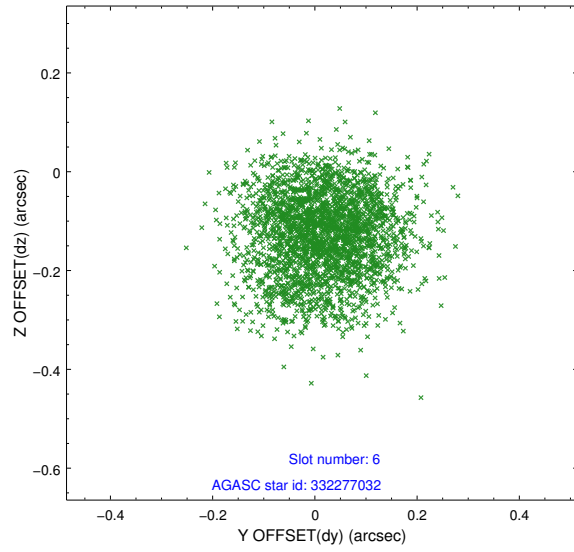
2.4.2 Slot 4



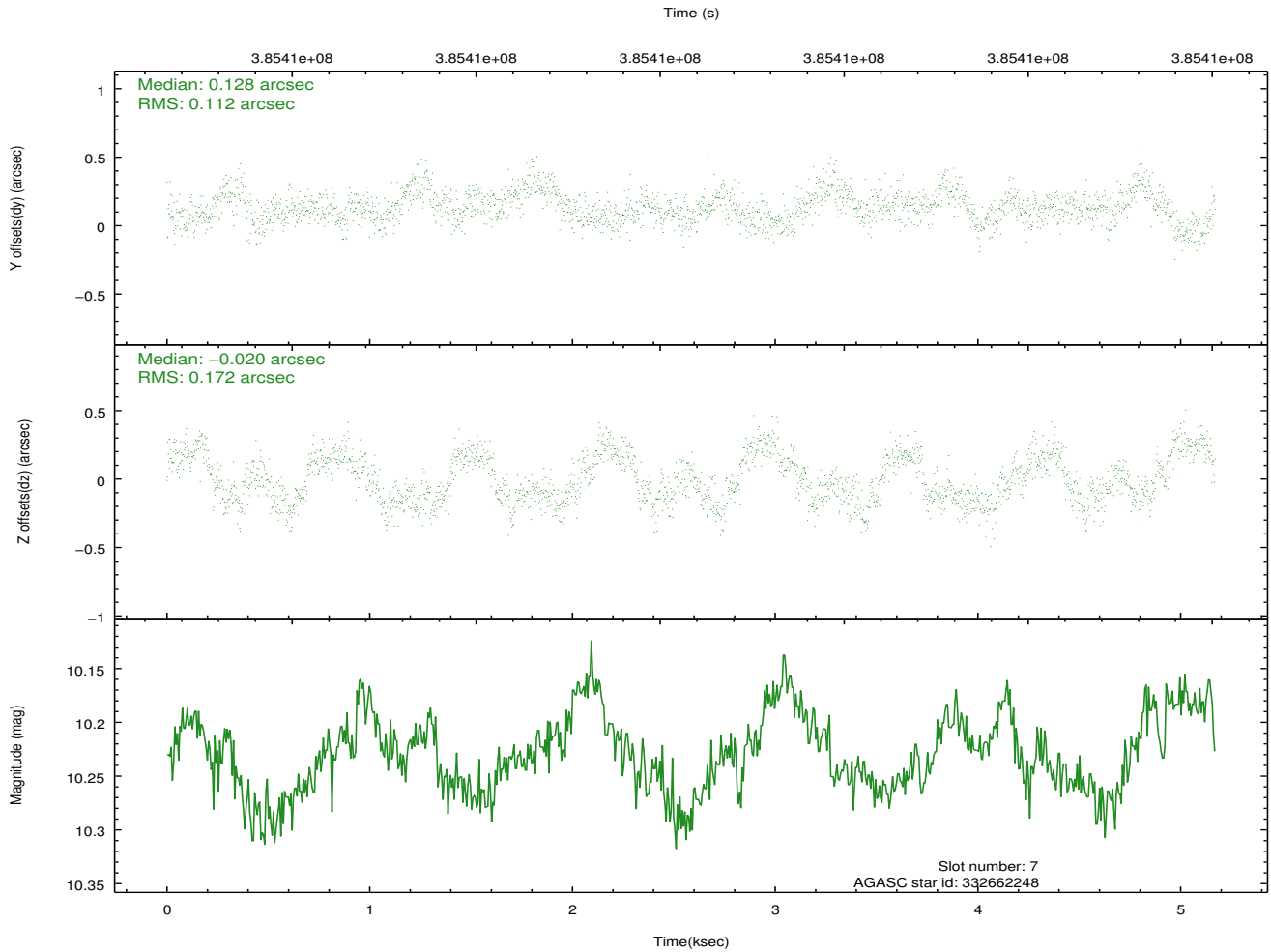
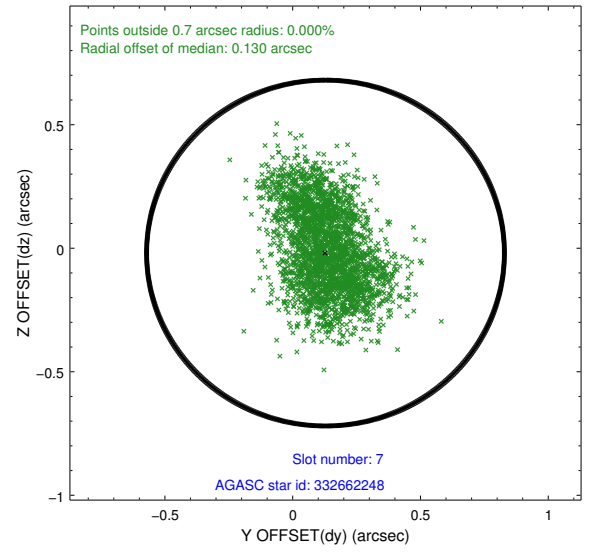
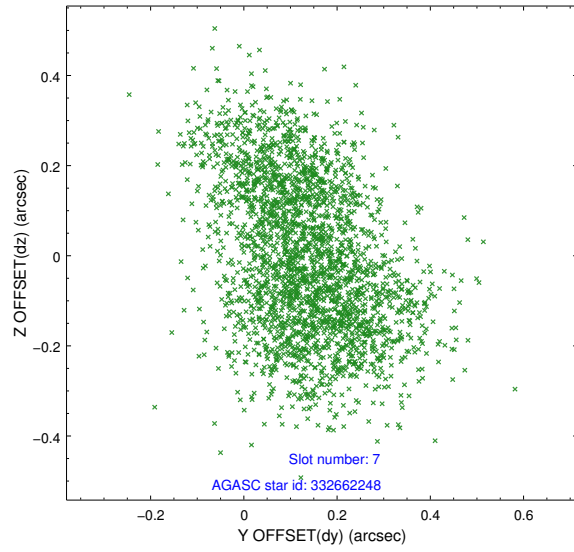
2.4.3 Slot 5



2.4.4 Slot 6

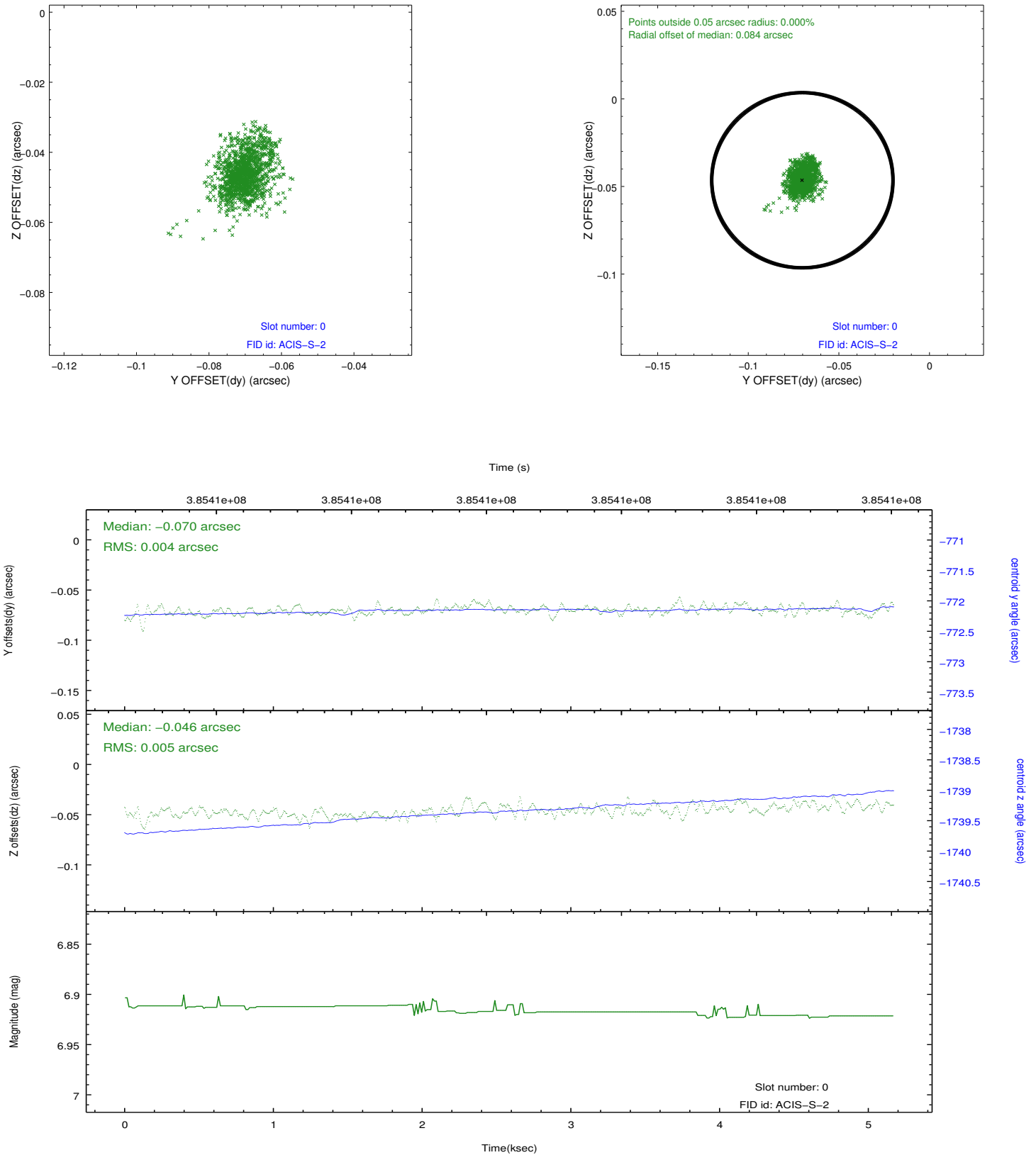


2.4.5 Slot 7

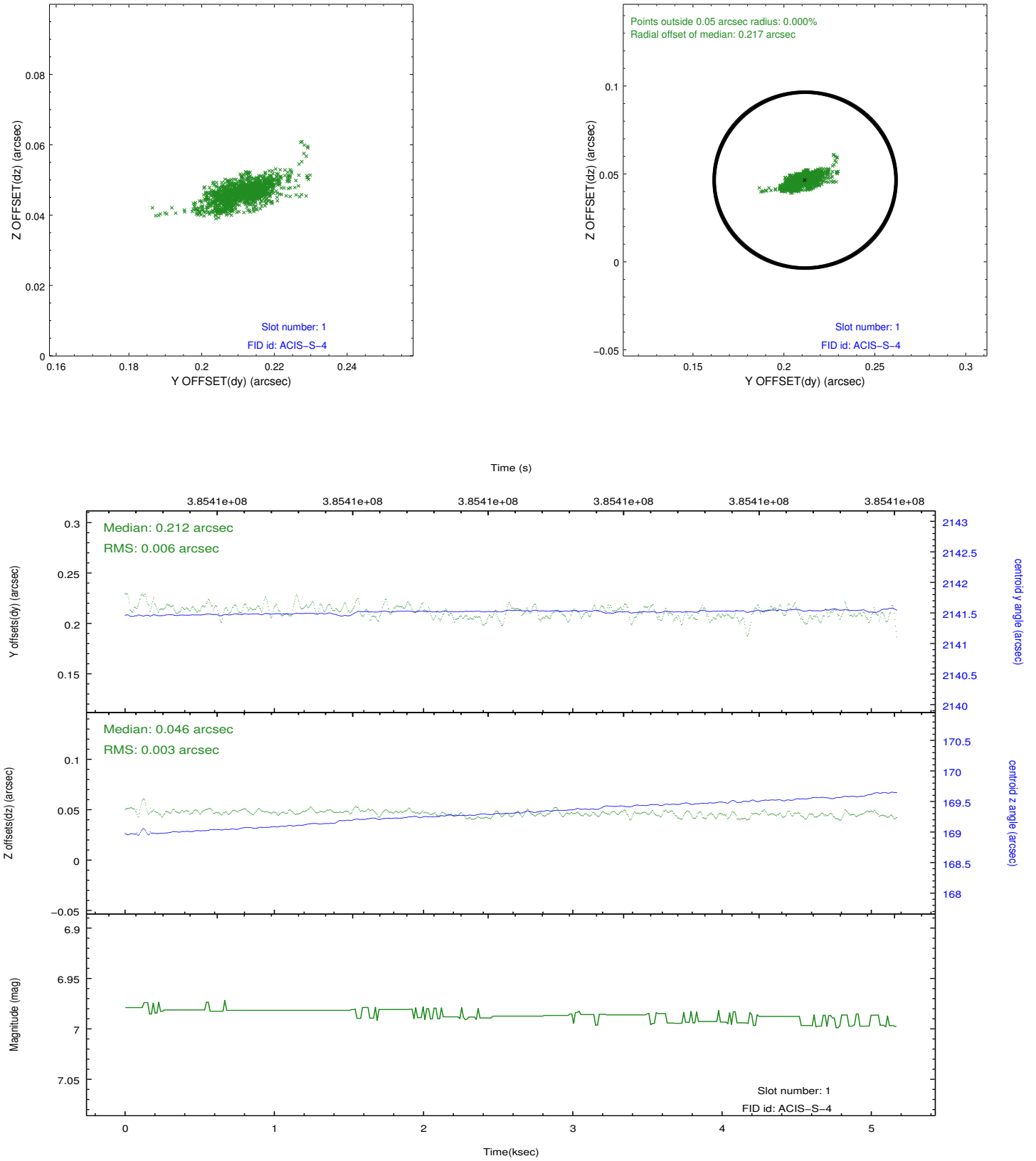


2.5 FID Slots

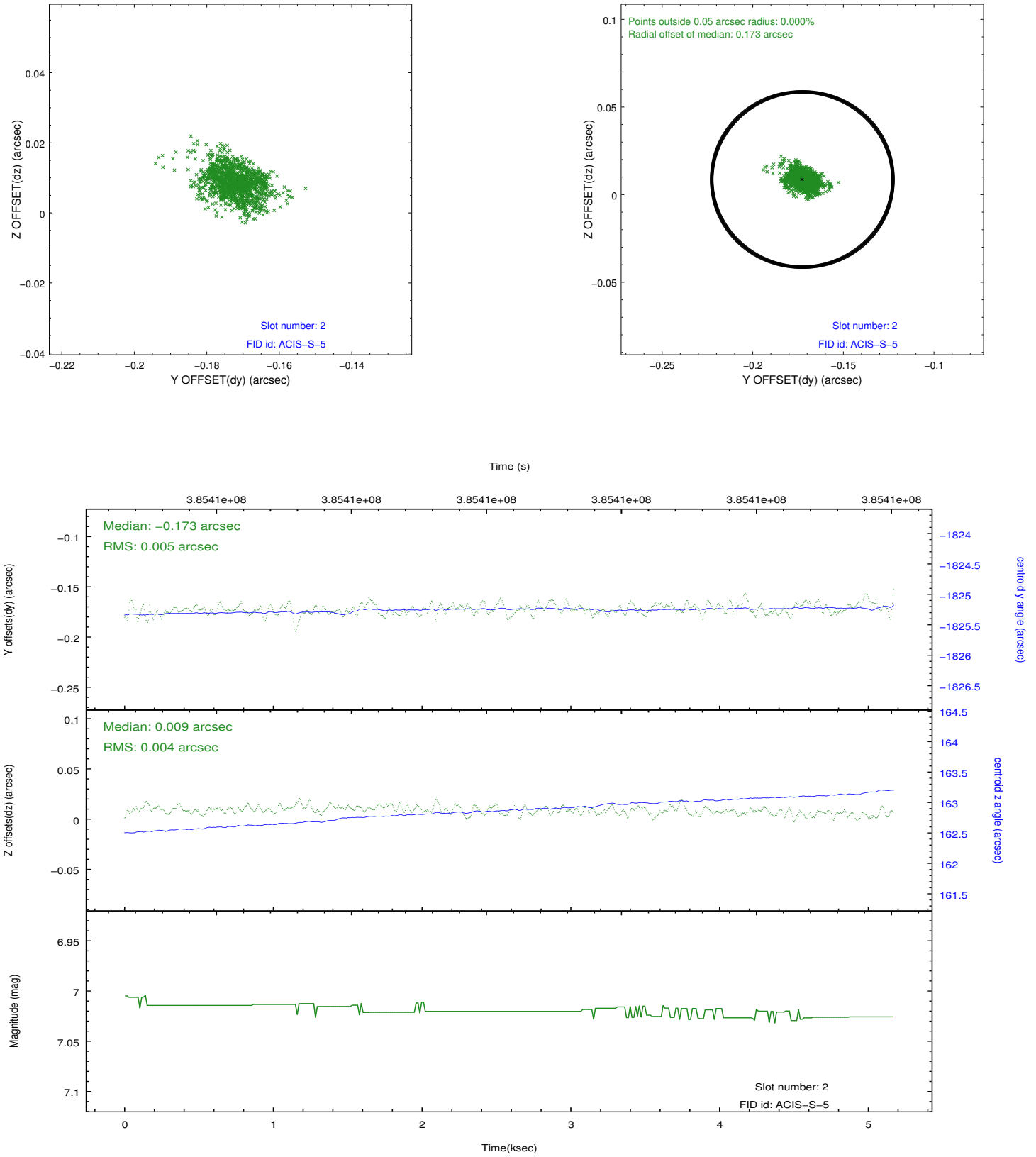
2.5.1 Slot 0



2.5.2 Slot 1



2.5.3 Slot 2



A Summary

A.1 Status

V&V Scientist	Jen Lauer
V&V Date (YYYY-MM-DD)	2012.07.02
V&V Edition	1
V&V Disposition and Status	OK
V&V Charge Time	5.167

A.2 Comments

A spatial region of the original bias map for CCD = 3 suffered from anomalously high data values. Pixels in the event data that were bias-corrected by one of the original affected bias pixels may have an apparent energy shift. While the change in energy is expected to be small (~ 20 eV), it depends on many parameters that have not yet been fully explored for this bias anomaly. The bias map for CCD = 3 has been reconstructed for this processing to remove this anomaly using scaled data from a comparable bias map from another observation. The pixels affected by the anomaly are bounded by sky coords:
(199.60621,32.11000),(199.60892,32.11321),(199.51742,32.16823),(199.49644,32.17597)