

V&V Reference Report

L2 ASCDS Version : 8.4.5

Observation 11550 - L2 Version 2
Chandra X-Ray Center

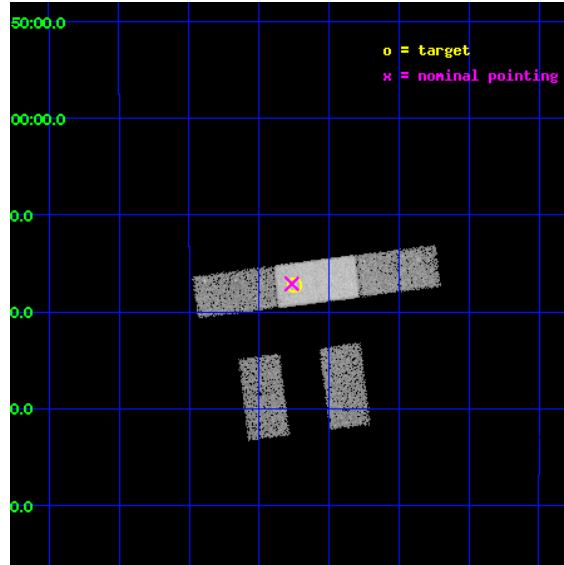
L2 Processing Date : Jun 17 2012

Contents

1	Front	2
2	OBI	3
2.1	OBI	3
2.1.1	Images	3
2.1.2	Bias	3
2.1.3	Parameters	4
2.1.4	Events	4
2.2	Compared Parameters	5
2.3	Aspect	6
2.4	Star Slots	9
2.4.1	Slot 3	9
2.4.2	Slot 4	10
2.4.3	Slot 5	11
2.4.4	Slot 6	12
2.4.5	Slot 7	13
2.5	FID Slots	14
2.5.1	Slot 0	14
2.5.2	Slot 1	15
2.5.3	Slot 2	16
A	Summary	17
A.1	Status	17
A.2	Comments	17

1 Front

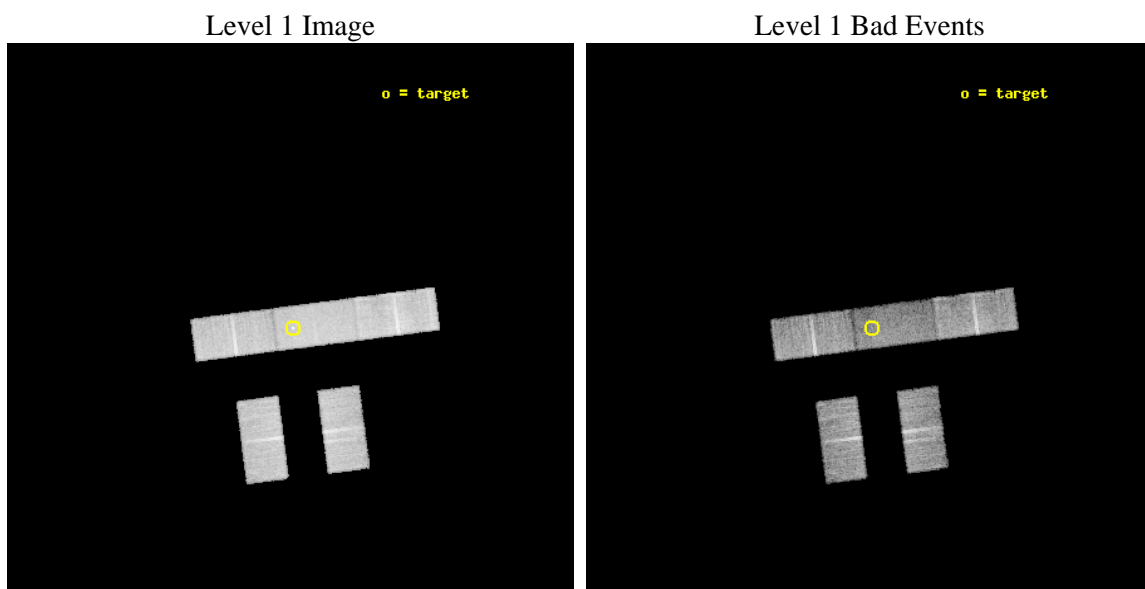
seq_num	702136	Sequence number
obs_id	11550	Observation id
title	The Size of Quasar Non-Thermal/X-ray Emission Regions	Proposal tit
observer	Prof. Christopher Kochanek	Principal investigator
object	HE0435-1223	Source name
dtcycle	0	
cycle	P	events from which exps? Prim/Second/Both
ra_targ	69.562083	Observer's specified target RA [deg]
dec_targ	-12.287333	Observer's specified target Dec [deg]
ra_nom	69.566583625268	Nominal RA [deg]
dec_nom	-12.285293663671	Nominal Dec [deg]
roll_nom	352.64838038253	Nominal Roll [deg]
revision	2	Processing version of data
ontime	13186.899907589	Sum of GTIs [s]
livetime	12876.056749357	Livetime [s]
ontime2	13186.899907589	Sum of GTIs [s]
ontime3	13186.899907589	Sum of GTIs [s]
ontime6	13186.899907589	Sum of GTIs [s]
ontime7	13186.899907589	Sum of GTIs [s]
ontime8	13185.158867598	Sum of GTIs [s]
l2events	54463	Number of level 2 events



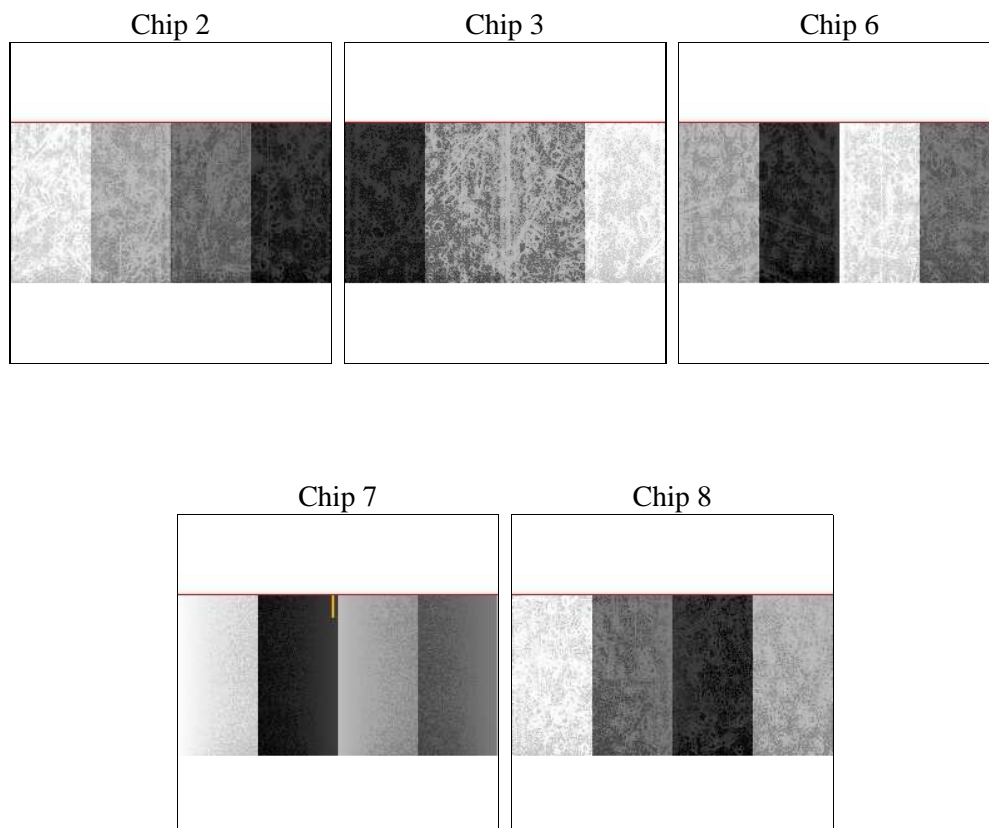
2 OBI

2.1 OBI

2.1.1 Images



2.1.2 Bias



2.1.3 Parameters

obi_num	0	Obi number	sched_exp_time	13000.000000	[s] Scheduled observation exposure time
ascdsver	8.4.5	Processing system revision	ontime	13186.899907589	Sum of GTIs [s]
caldsver	4.4.10	 	ontime2	13186.899907589	Sum of GTIs [s]
date	2012-06-17T17:06:31	Date and time of file creation	ontime3	13186.899907589	Sum of GTIs [s]
revision	2	Processing version of data	ontime6	13186.899907589	Sum of GTIs [s]
			ontime7	13186.899907589	Sum of GTIs [s]
			ontime8	13185.158867598	Sum of GTIs [s]
			l1events	334792	Number of level 1 events

2.1.4 Events

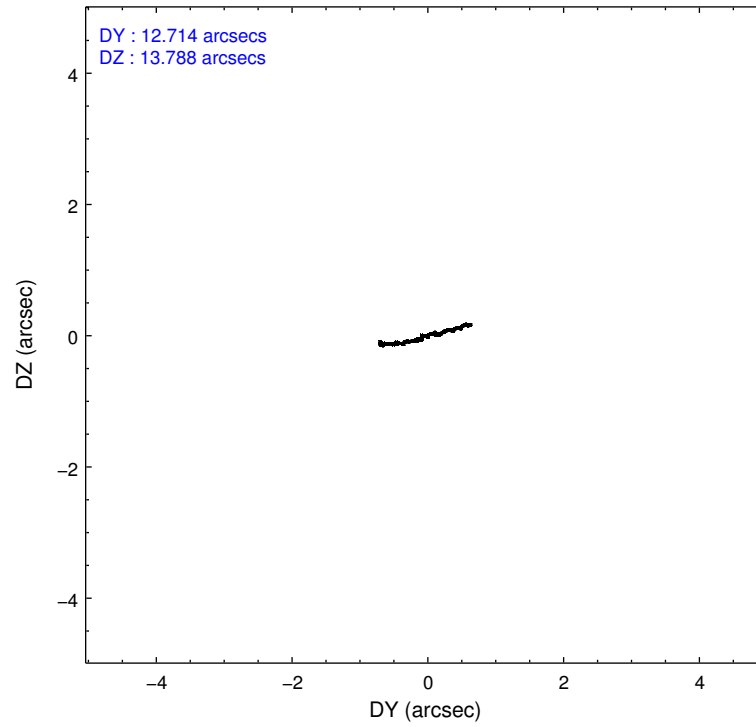
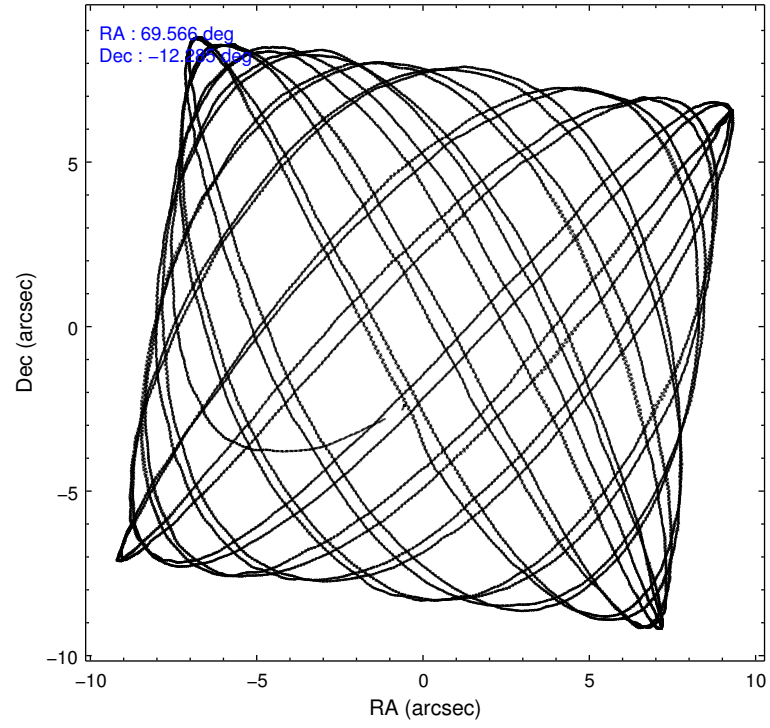
	ccd 2	ccd 3	ccd 6	ccd 7	ccd 8
level 1 events	60960	59767	63990	70794	79281
rejected events	54677	53832	57068	37754	60084
rejected %	89%	90%	89%	53%	75%

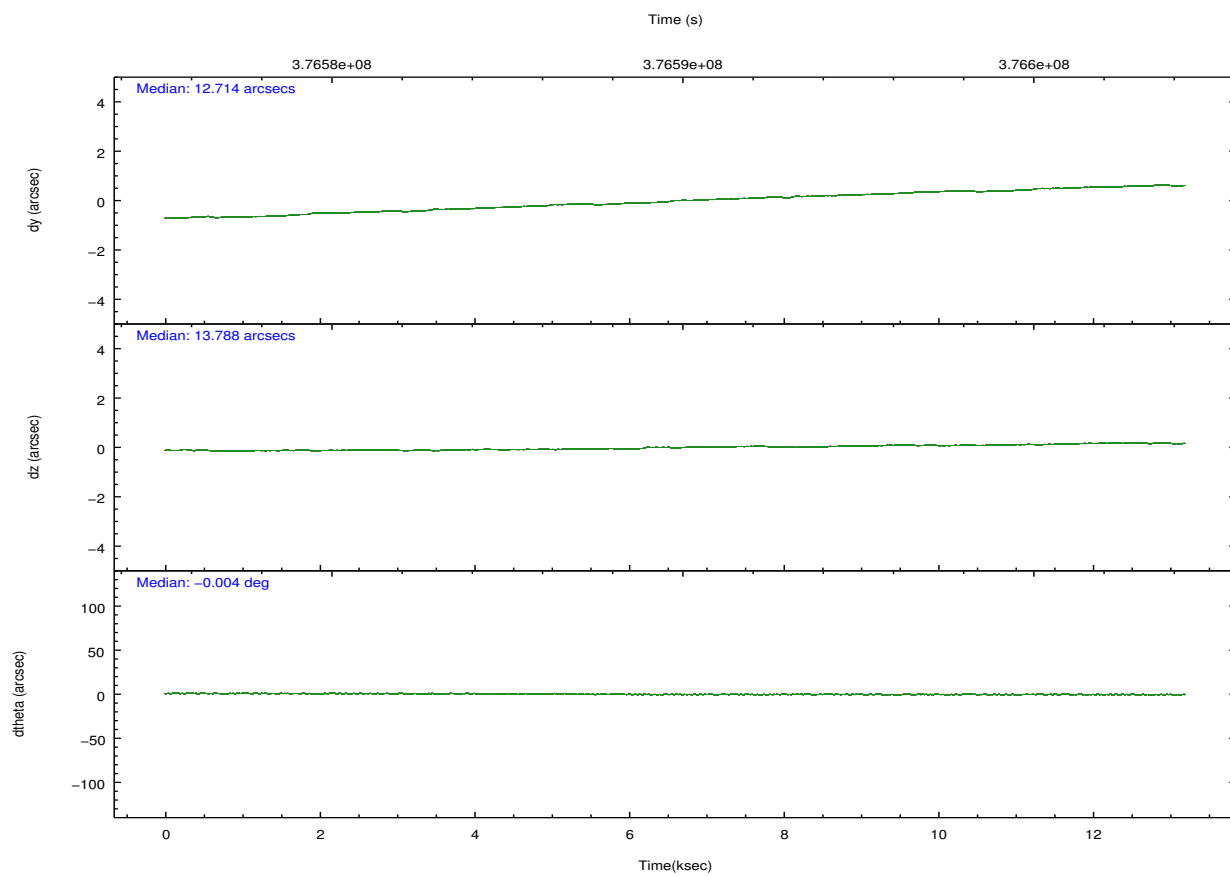
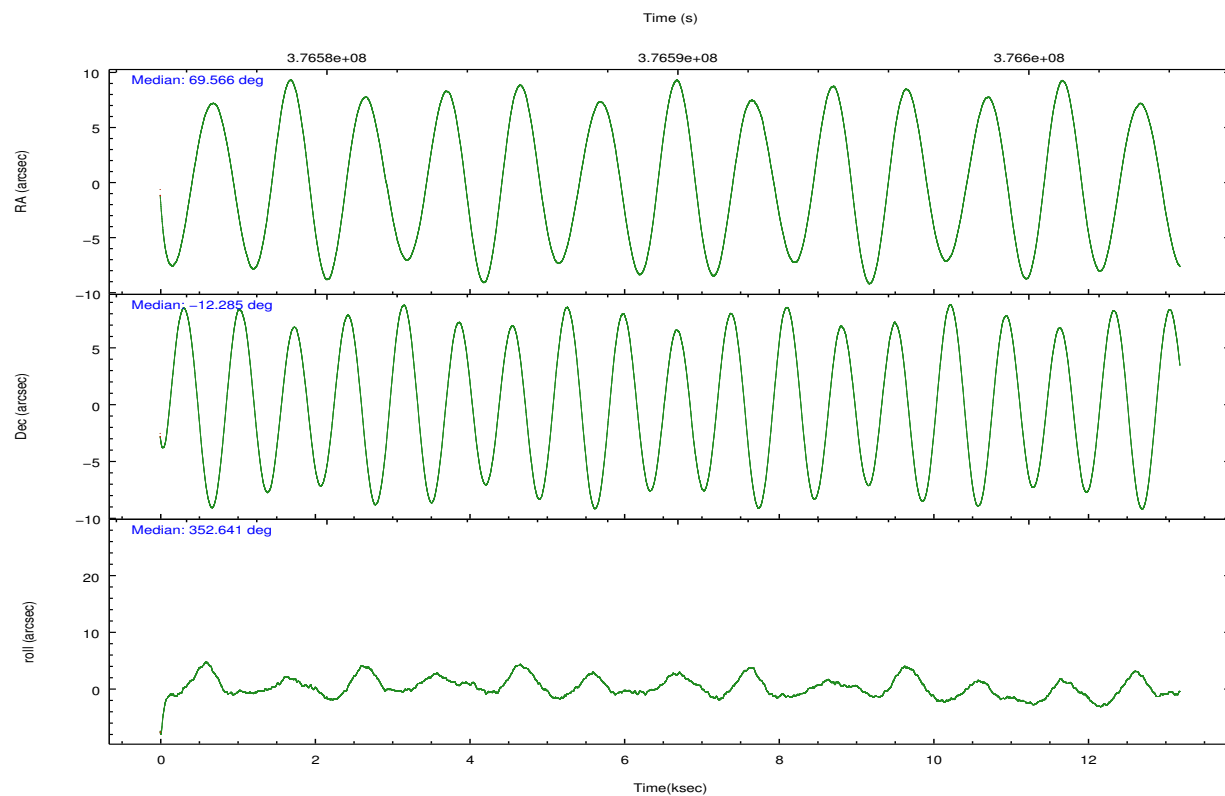
	ccd 2	ccd 3	ccd 6	ccd 7	ccd 8
grade 0 events	2076	1906	2277	3320	5709
	3%	3%	3%	4%	7%
grade 1 events	39	35	26	105	51
	0%	0%	0%	0%	0%
grade 2 events	1429	1247	1489	7090	4271
	2%	2%	2%	10%	5%
grade 3 events	806	787	876	3354	2209
	1%	1%	1%	4%	2%
grade 4 events	861	784	871	3288	2046
	1%	1%	1%	4%	2%
grade 5 events	2095	2430	2510	7412	3664
	3%	4%	3%	10%	4%
grade 6 events	1116	1213	1412	15999	4965
	1%	2%	2%	22%	6%
grade 7 events	52538	51365	54529	30226	56366
	86%	85%	85%	42%	71%

2.2 Compared Parameters

Parameter	Planned	Actual	Parameter	Planned	Actual
Instrument	ACIS	ACIS	Obspar format version number	7	7
Detector	ACIS-23678	ACIS-23678	Obspar file type	PREDICTED	ACTUAL
Grating	NONE	NONE	Obspar update status	NONE	UPDATED
Data mode	VFAINT	VFAINT	CCD I0 on	N	N
Observation mode	POINTING	POINTING	CCD I1 on	N	N
[deg] Pointing RA	69.540924	69.56658362526841	CCD I2 on	O4	Y
[deg] Pointing Dec	-12.296209	-12.28529366367137	CCD I3 on	O3	Y
[deg] Pointing Roll	352.486296	352.6483803825312	CCD S0 on	N	N
[mm] SIM focus pos	-0.684267	-0.6828225247311905	CCD S1 on	N	N
[mm] SIM defocus	0	0.001444936568705701	CCD S2 on	O1	Y
[mm] SIM translation stage pos	-190.132523	-190.1400660498719	CCD S3 on	Y	Y
[mm] SIM translation stage offset	0	0.00754346686406393	CCD S4 on	O2	Y
[s] Observation start time (MET)	376583480.184000	376582663.39267	CCD S5 on	N	N
Observation start date	2009-12-07T14:30:14	2009-12-07T14:17:43	Number of optional ACIS chips dropped	0	0
[s] Observation end time (MET)	376596480.184000	376597693.48093	On-chip summing requested	N	N
Observation end date	2009-12-07T18:06:54	2009-12-07T18:28:13	Subarray requested	CUSTOM	1/2
Read mode	TIMED	TIMED	Subarray start row	257	257
			Subarray row count	512	512
			Alternating exposures requested	N	N
			[s] Primary exposure time	0.000000	1.7

2.3 Aspect



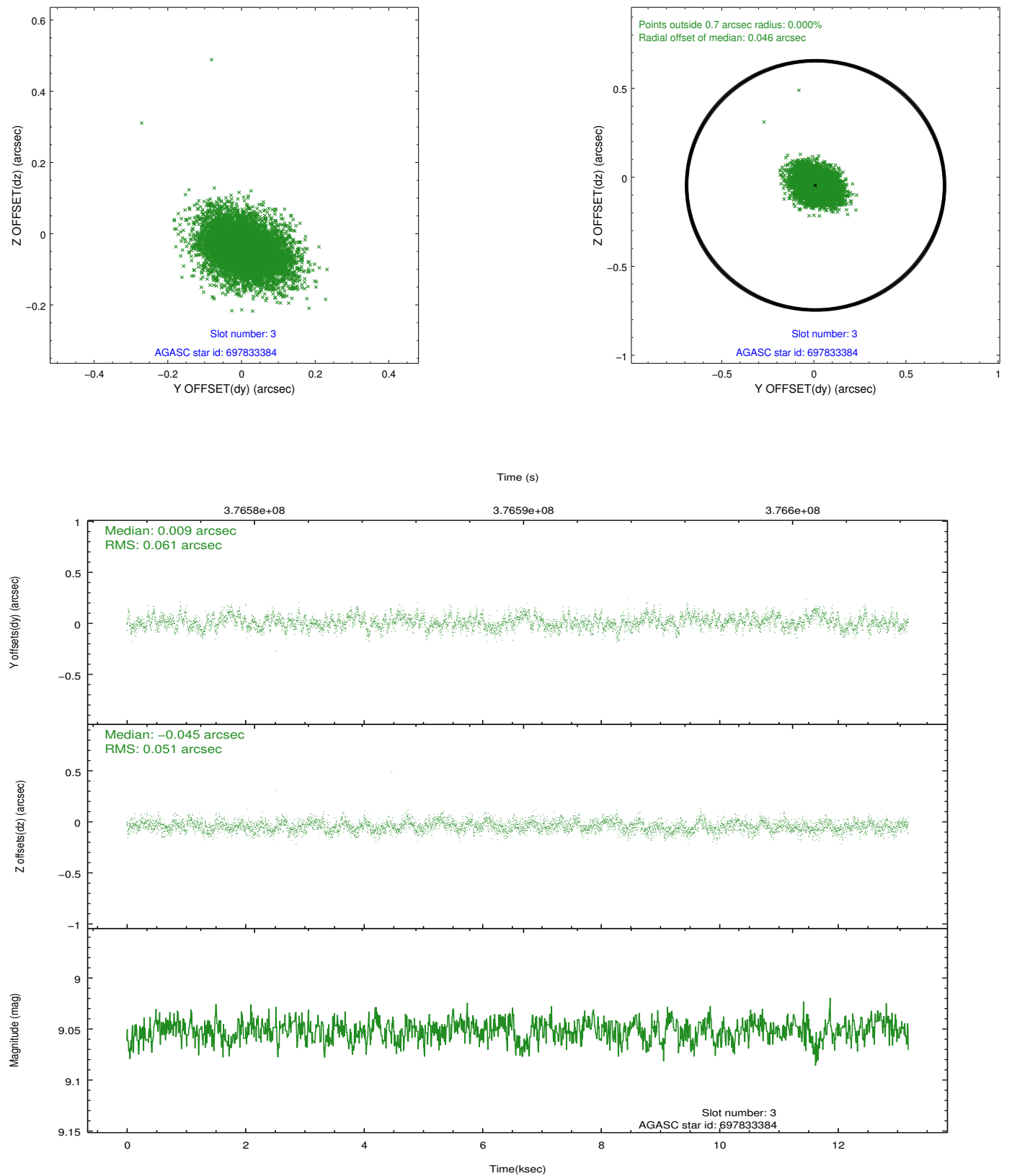


Slot Statistics

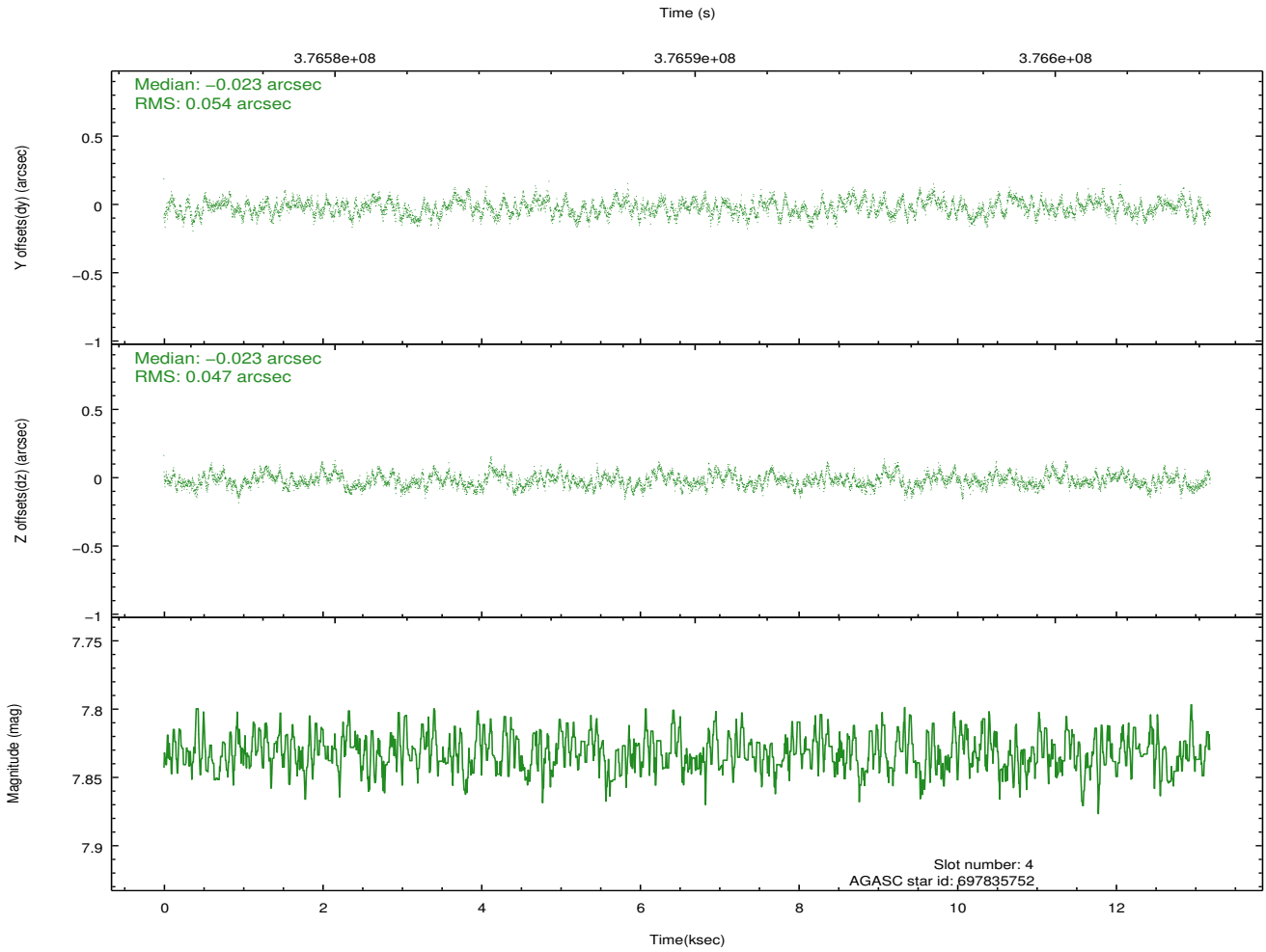
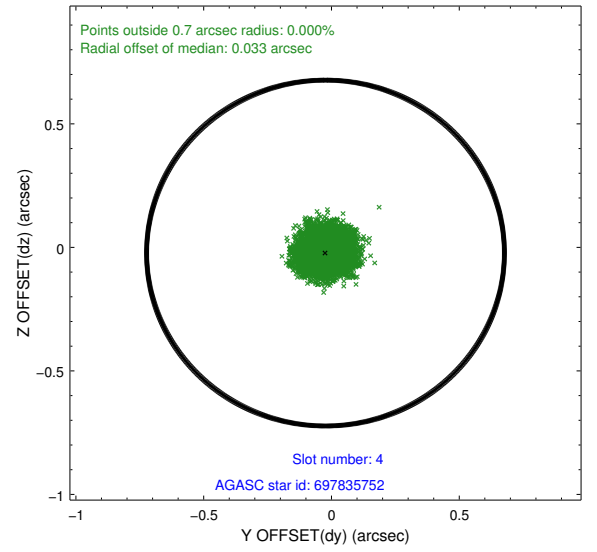
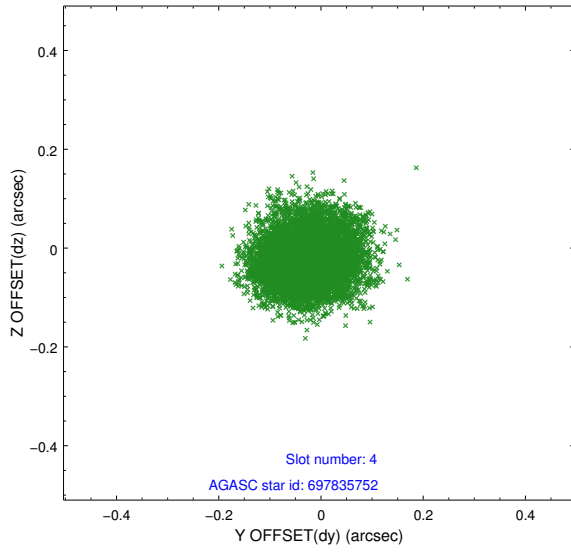
slot	status	id	mag	n_pts	med_dy	med_dz	dr1	dr2	ra	dec	mean_y	mean_z
0	FID	ACIS-S-2	6.90	3218	-0.035	-0.050	0.009	0.014	0.000000	0.000000	-765.62	-1735.18
1	FID	ACIS-S-4	6.99	3218	0.166	0.030	0.015	0.025	0.000000	0.000000	2147.69	173.01
2	FID	ACIS-S-5	7.03	3218	-0.163	0.028	0.013	0.024	0.000000	0.000000	-1818.12	167.09
3	GUIDE	697833384	9.05	6426	0.009	-0.045	0.084	0.138	69.085079	-11.610863	-1916.18	2234.31
4	GUIDE	697835752	7.83	6435	-0.023	-0.023	0.079	0.121	69.312835	-12.164170	-857.50	366.34
5	GUIDE	697835968	9.03	6432	0.052	0.032	0.098	0.153	70.113917	-11.772123	1755.88	2132.82
6	GUIDE	698220616	7.52	6433	-0.105	0.058	0.067	0.103	69.313891	-12.560296	-665.90	-1046.89
7	GUIDE	698222072	8.42	6431	0.064	-0.020	0.119	0.209	70.057004	-13.015334	2134.27	-2331.53

2.4 Star Slots

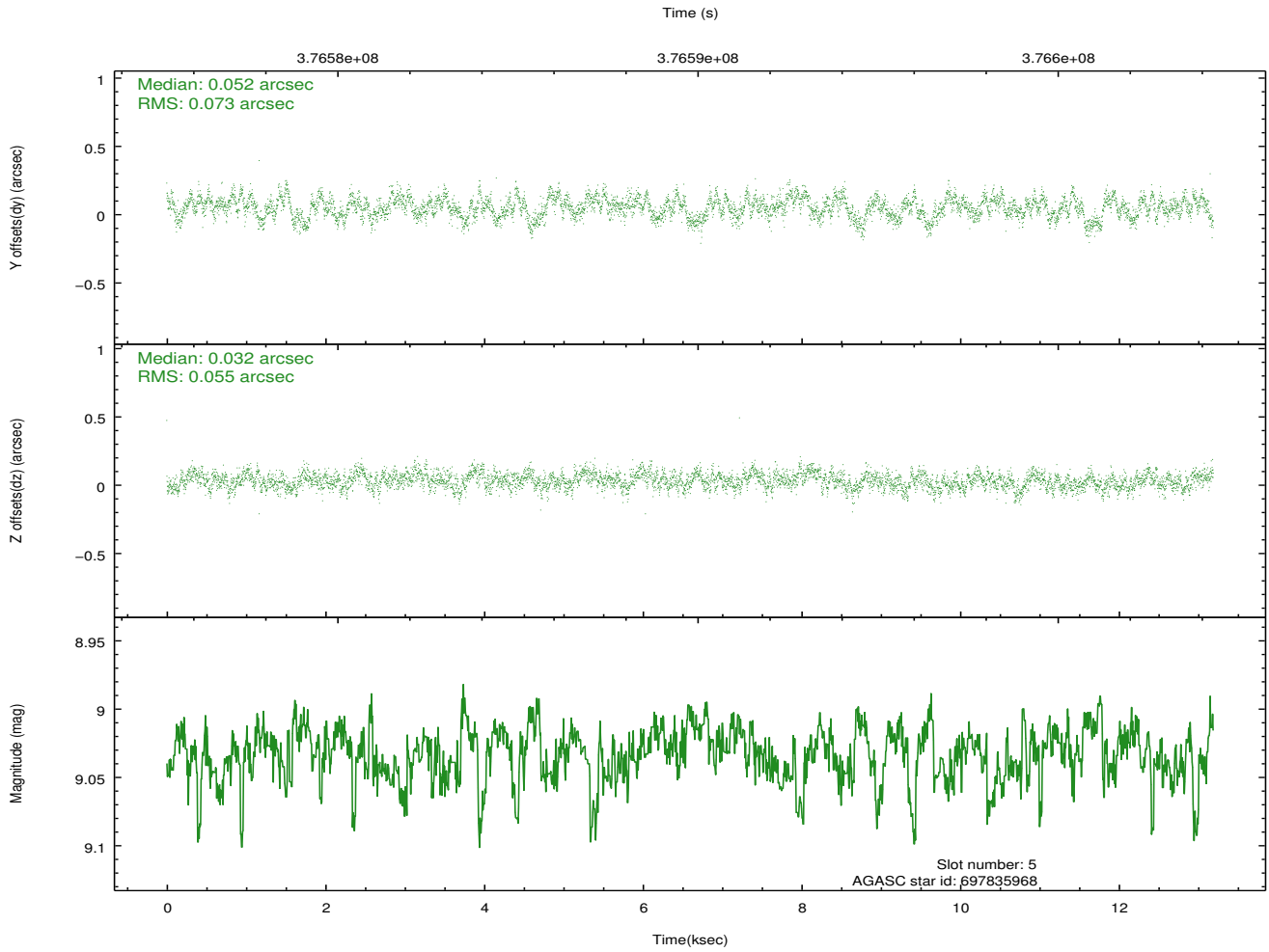
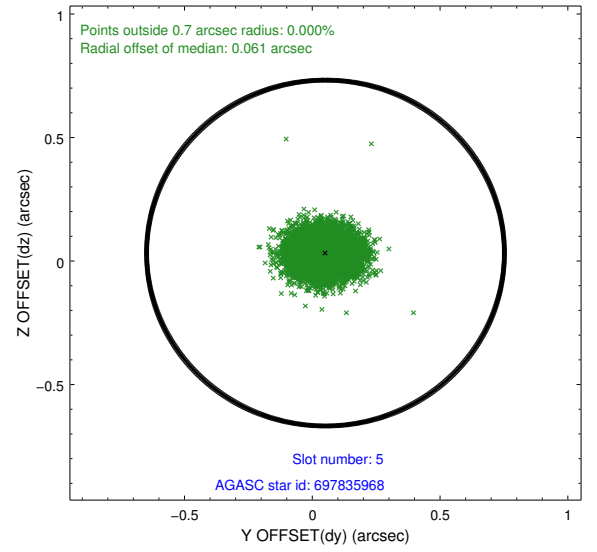
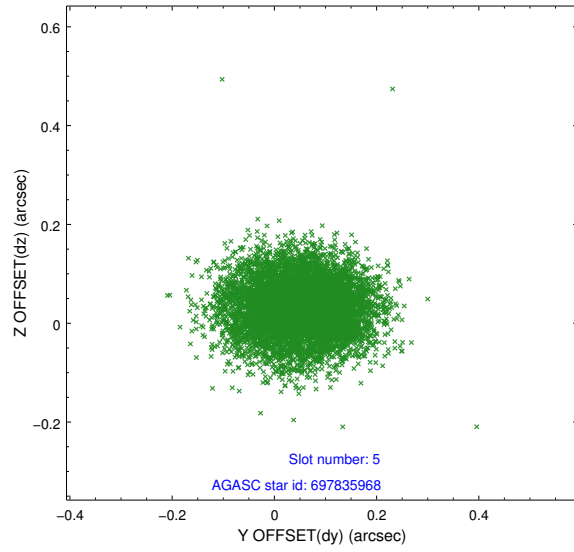
2.4.1 Slot 3



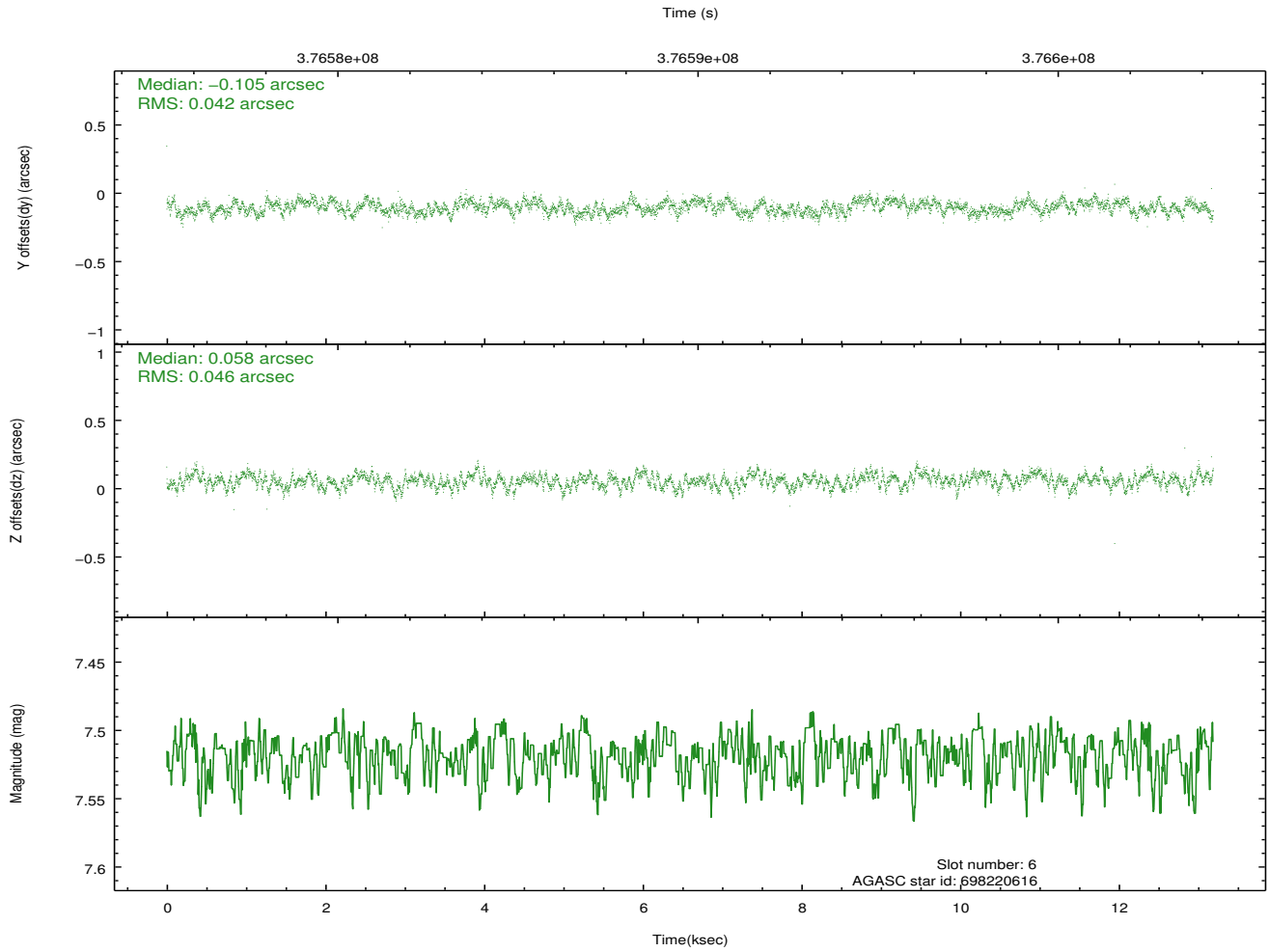
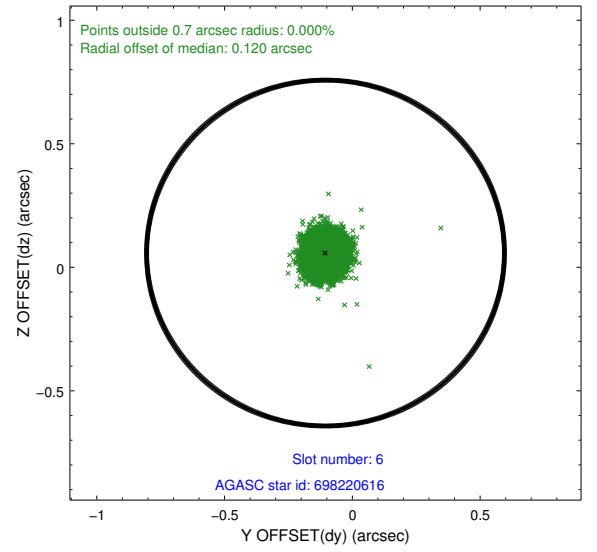
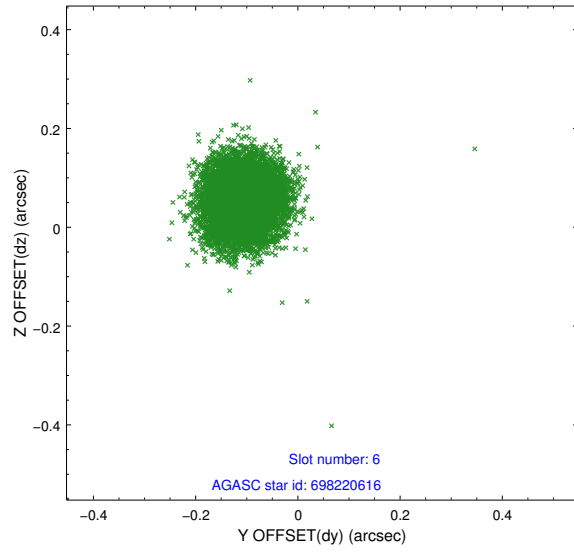
2.4.2 Slot 4



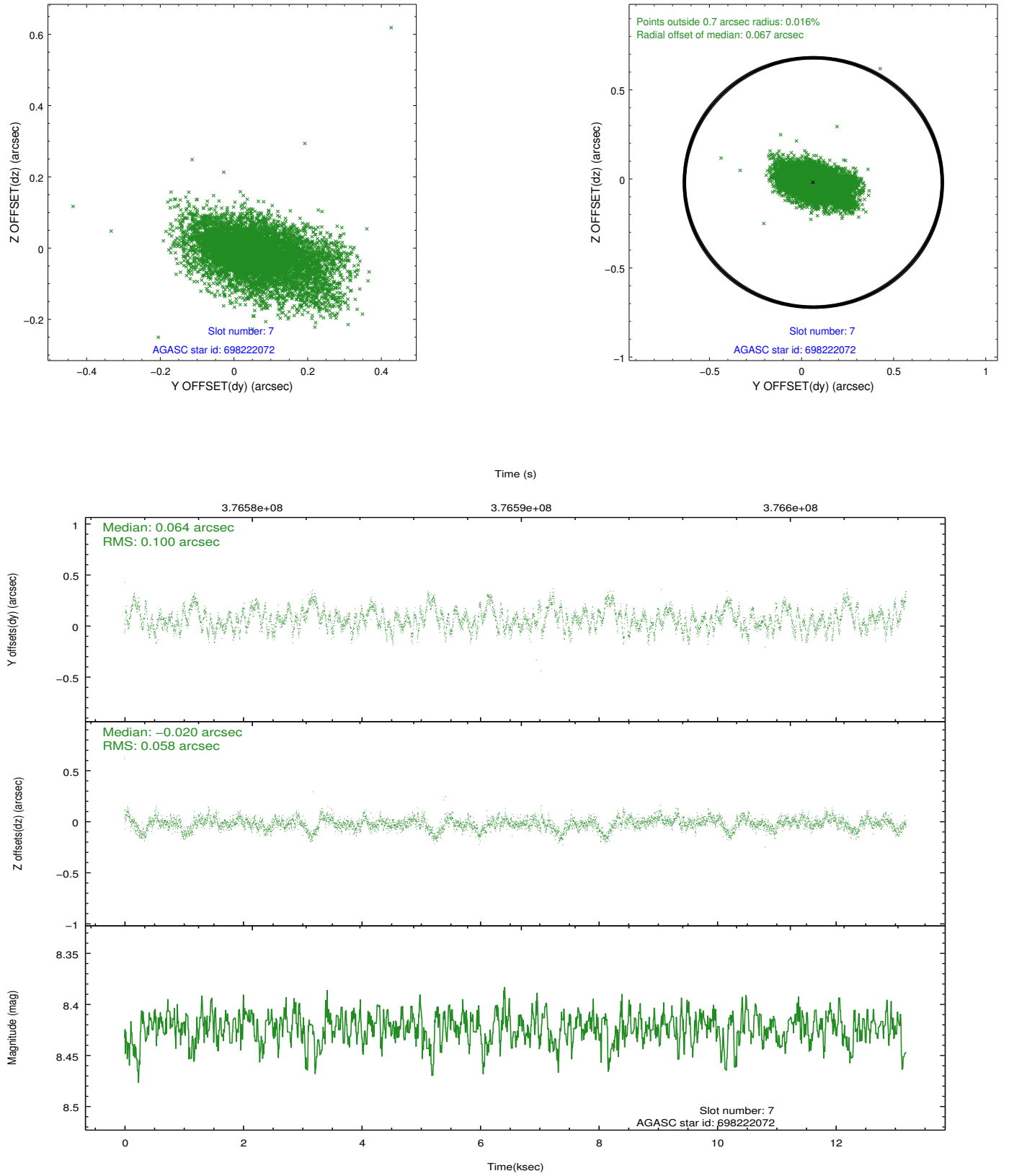
2.4.3 Slot 5



2.4.4 Slot 6

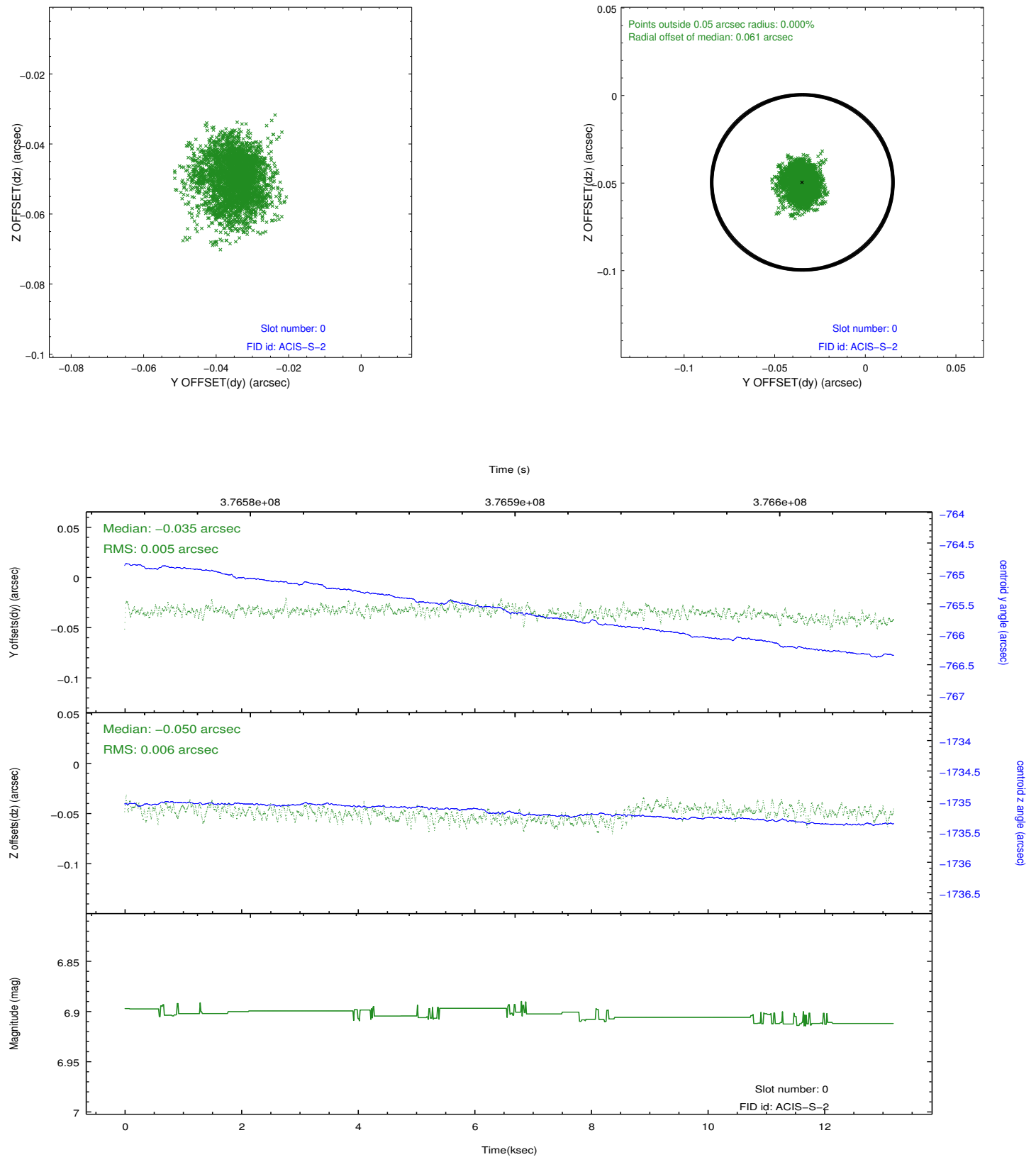


2.4.5 Slot 7

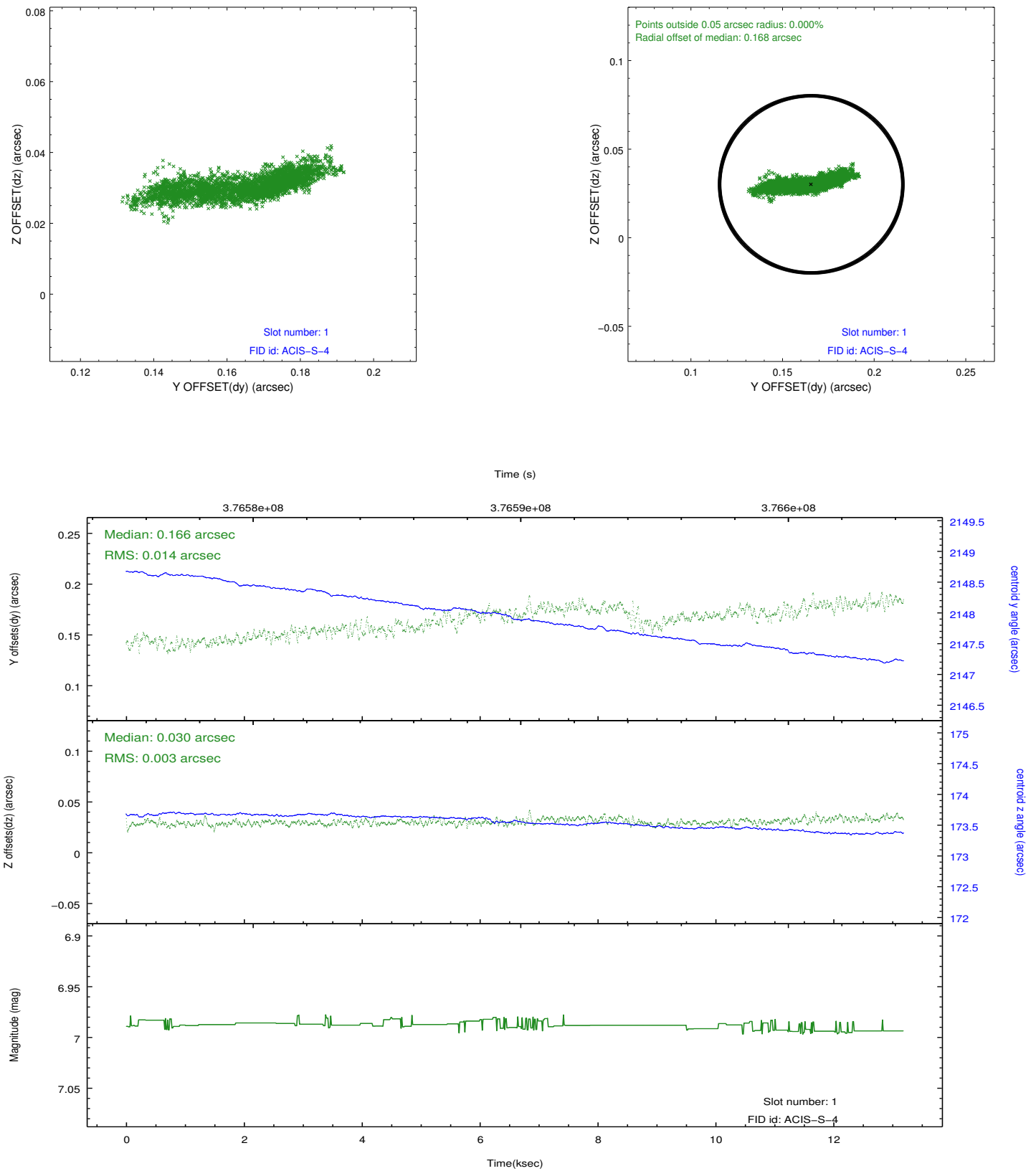


2.5 FID Slots

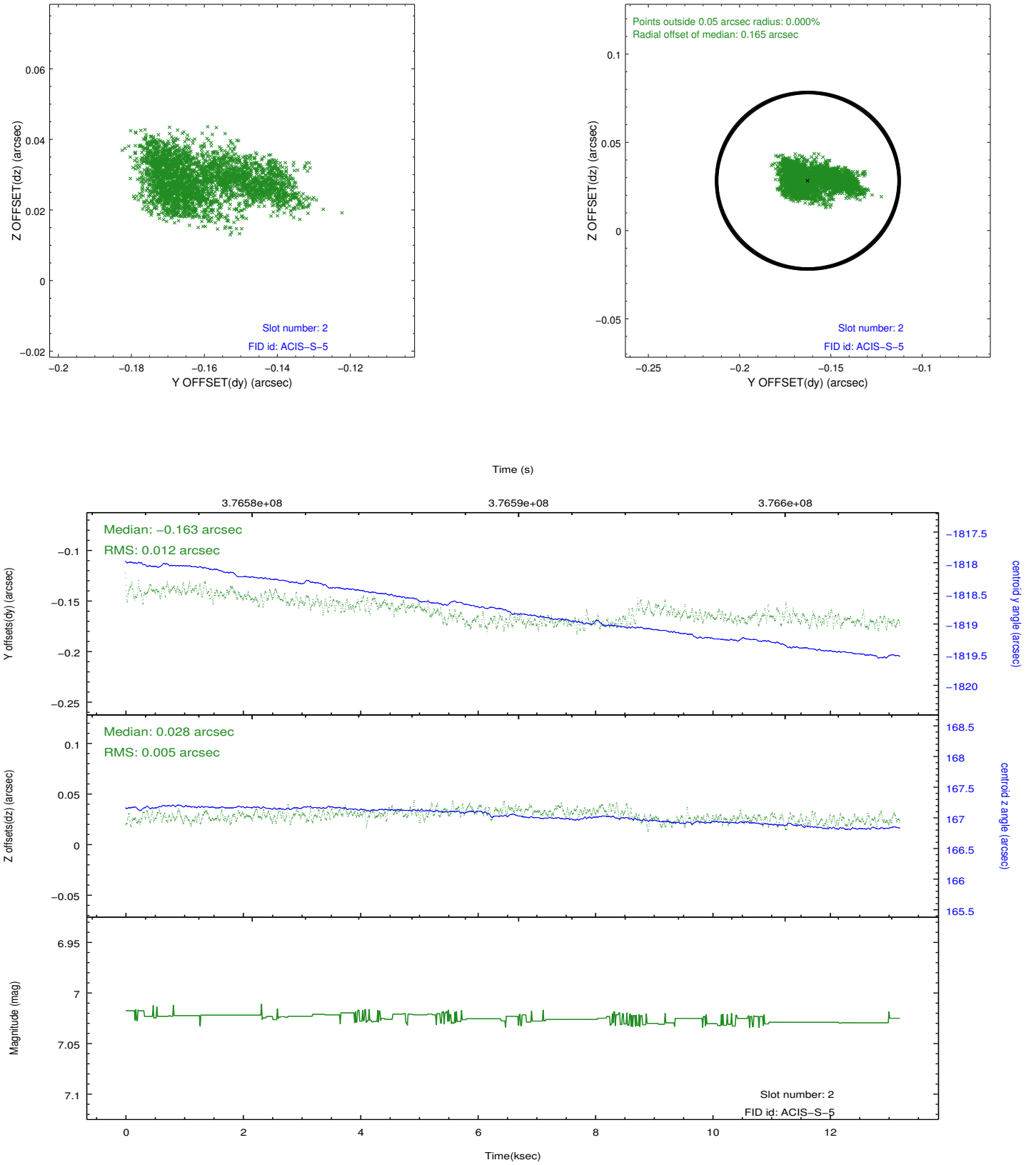
2.5.1 Slot 0



2.5.2 Slot 1



2.5.3 Slot 2



A Summary

A.1 Status

V&V Scientist	Jen Lauer
V&V Date (YYYY-MM-DD)	2012.06.21
V&V Edition	1
V&V Disposition and Status	OK
V&V Charge Time	13.186899907589

A.2 Comments