

V&V Reference Report

L2 ASCDS Version : 8.4.5

Observation 11539 - L2 Version 2
Chandra X-Ray Center

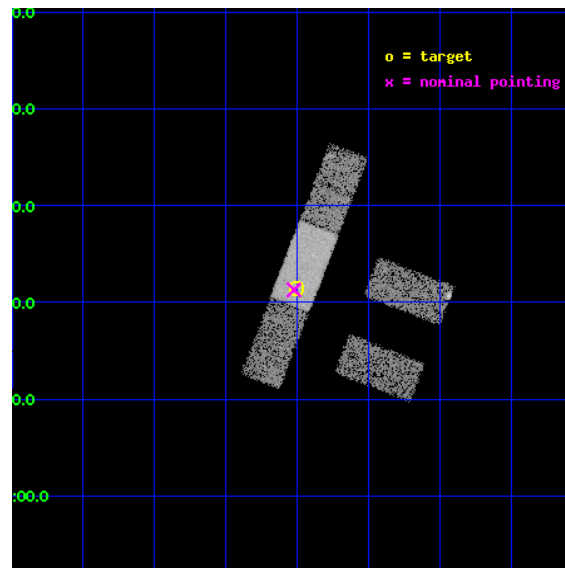
L2 Processing Date : Jul 7 2012

Contents

1	Front	2
2	OBI	3
2.1	OBI	3
2.1.1	Images	3
2.1.2	Bias	3
2.1.3	Parameters	4
2.1.4	Events	4
2.2	Compared Parameters	5
2.3	Aspect	6
2.4	Star Slots	9
2.4.1	Slot 3	9
2.4.2	Slot 4	10
2.4.3	Slot 5	11
2.4.4	Slot 6	12
2.4.5	Slot 7	13
2.5	FID Slots	14
2.5.1	Slot 0	14
2.5.2	Slot 1	15
2.5.3	Slot 2	16
A	Summary	17
A.1	Status	17
A.2	Comments	17

1 Front

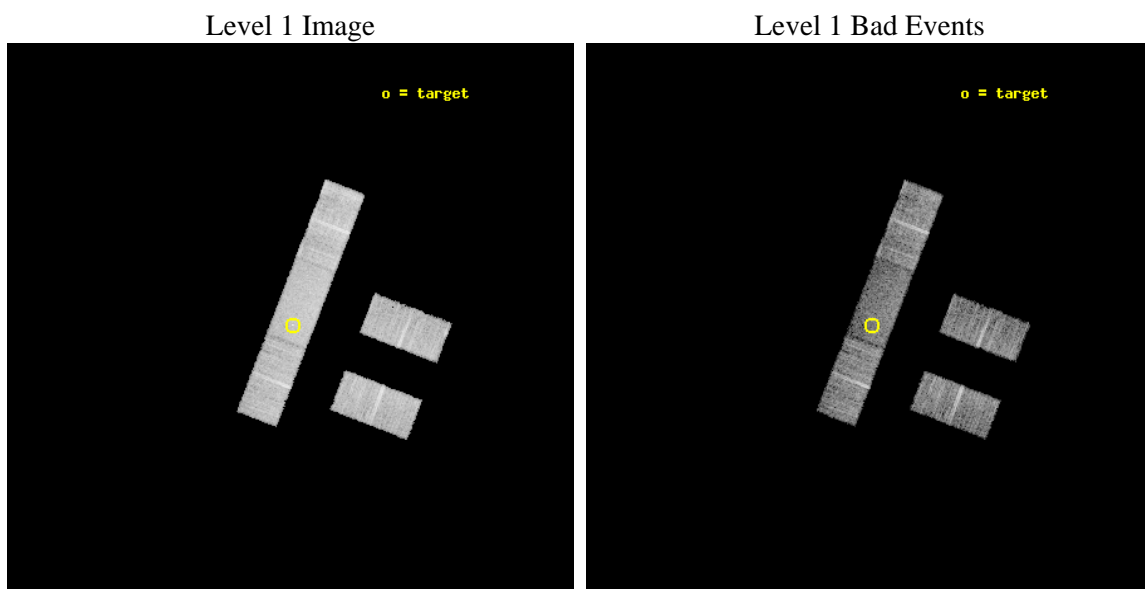
seq_num	702125	Sequence number
obs_id	11539	Observation id
title	The Size of Quasar Non-Thermal/X-ray Emission Regions	Proposal tit
observer	Prof. Christopher Kochanek	Principal investigator
object	Q2237+0305	Source name
dtcycle	0	
cycle	P	events from which exps? Prim/Second/Both
ra_targ	340.12625	Observer's specified target RA [deg]
dec_targ	3.358	Observer's specified target Dec [deg]
ra_nom	340.13015371085	Nominal RA [deg]
dec_nom	3.3550747198729	Nominal Dec [deg]
roll_nom	291.15640605007	Nominal Roll [deg]
revision	2	Processing version of data
ontime	10065.699929476	Sum of GTIs [s]
livetime	9828.4300648514	Livetime [s]
ontime2	10065.699929476	Sum of GTIs [s]
ontime3	10065.699929476	Sum of GTIs [s]
ontime6	10065.699929476	Sum of GTIs [s]
ontime7	10065.699929476	Sum of GTIs [s]
ontime8	10065.699929476	Sum of GTIs [s]
l2events	36050	Number of level 2 events



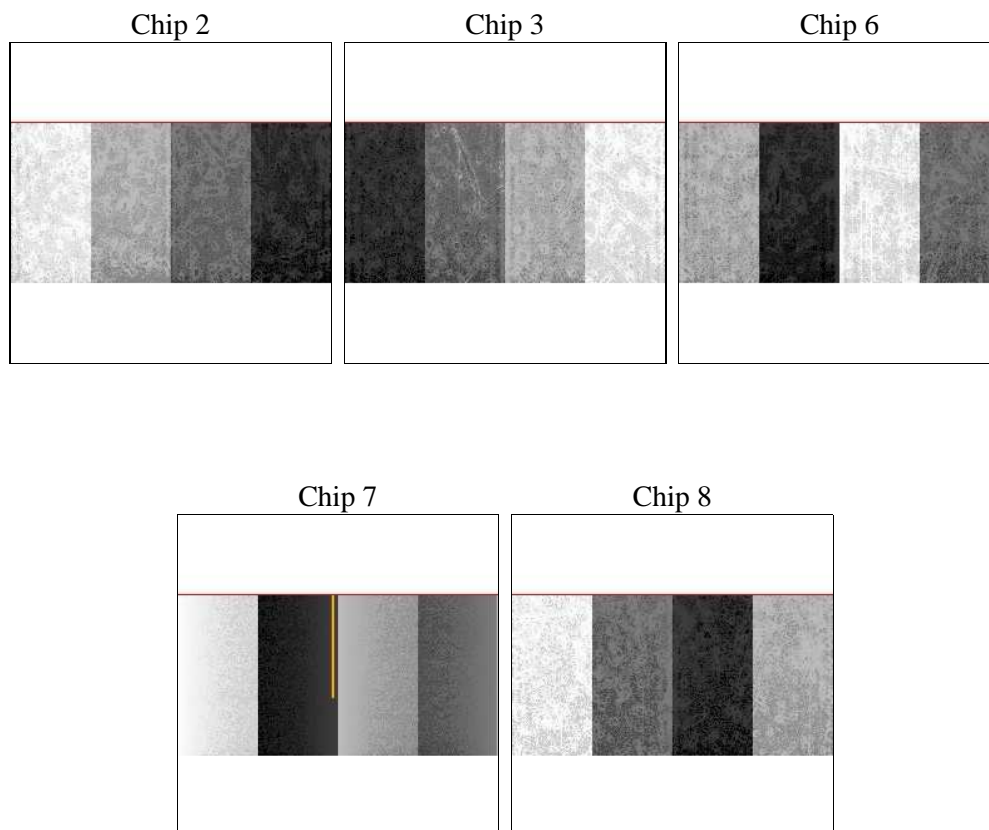
2 OBI

2.1 OBI

2.1.1 Images



2.1.2 Bias



2.1.3 Parameters

obi_num	0	Obi number	sched_exp_time	10000.000000	[s] Scheduled observation exposure time
ascdsver	8.4.5	Processing system revision	ontime	10065.699929476	Sum of GTIs [s]
caldbver	4.5.0	 	ontime2	10065.699929476	Sum of GTIs [s]
date	2012-07-07T03:46:32	Date and time of file creation	ontime3	10065.699929476	Sum of GTIs [s]
revision	2	Processing version of data	ontime6	10065.699929476	Sum of GTIs [s]
			ontime7	10065.699929476	Sum of GTIs [s]
			ontime8	10065.699929476	Sum of GTIs [s]
			l1events	211834	Number of level 1 events

2.1.4 Events

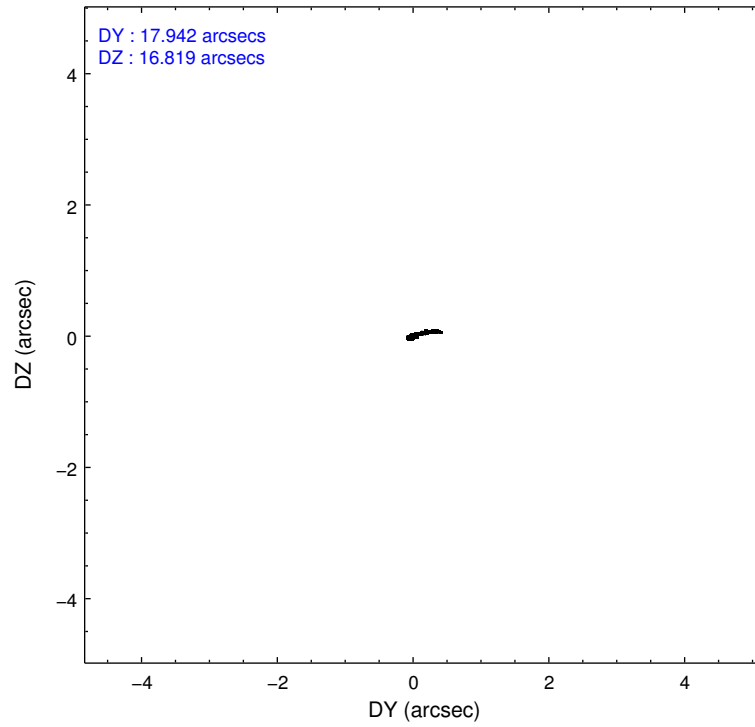
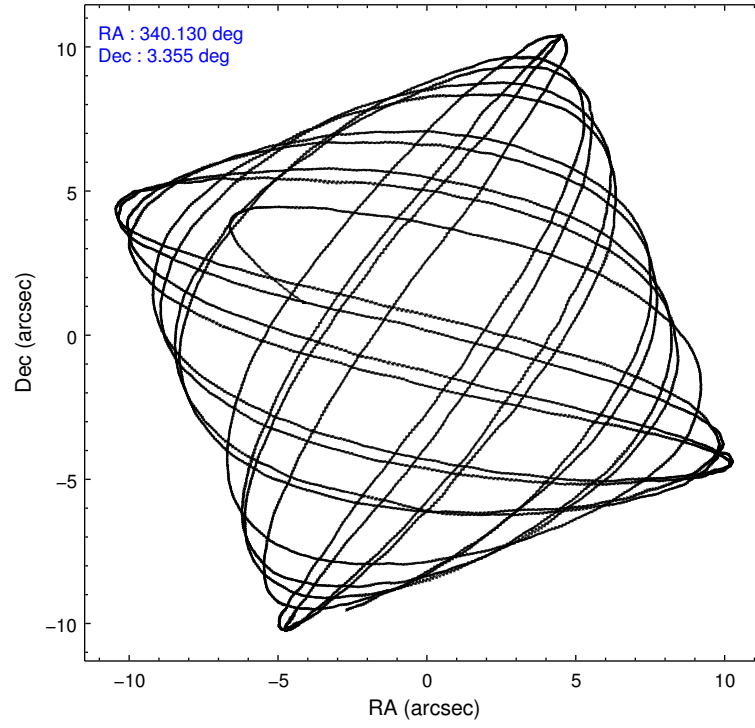
	ccd 2	ccd 3	ccd 6	ccd 7	ccd 8
level 1 events	38197	36296	39480	46260	51601
rejected events	34123	31894	35104	24876	38816
rejected %	89%	87%	88%	53%	75%

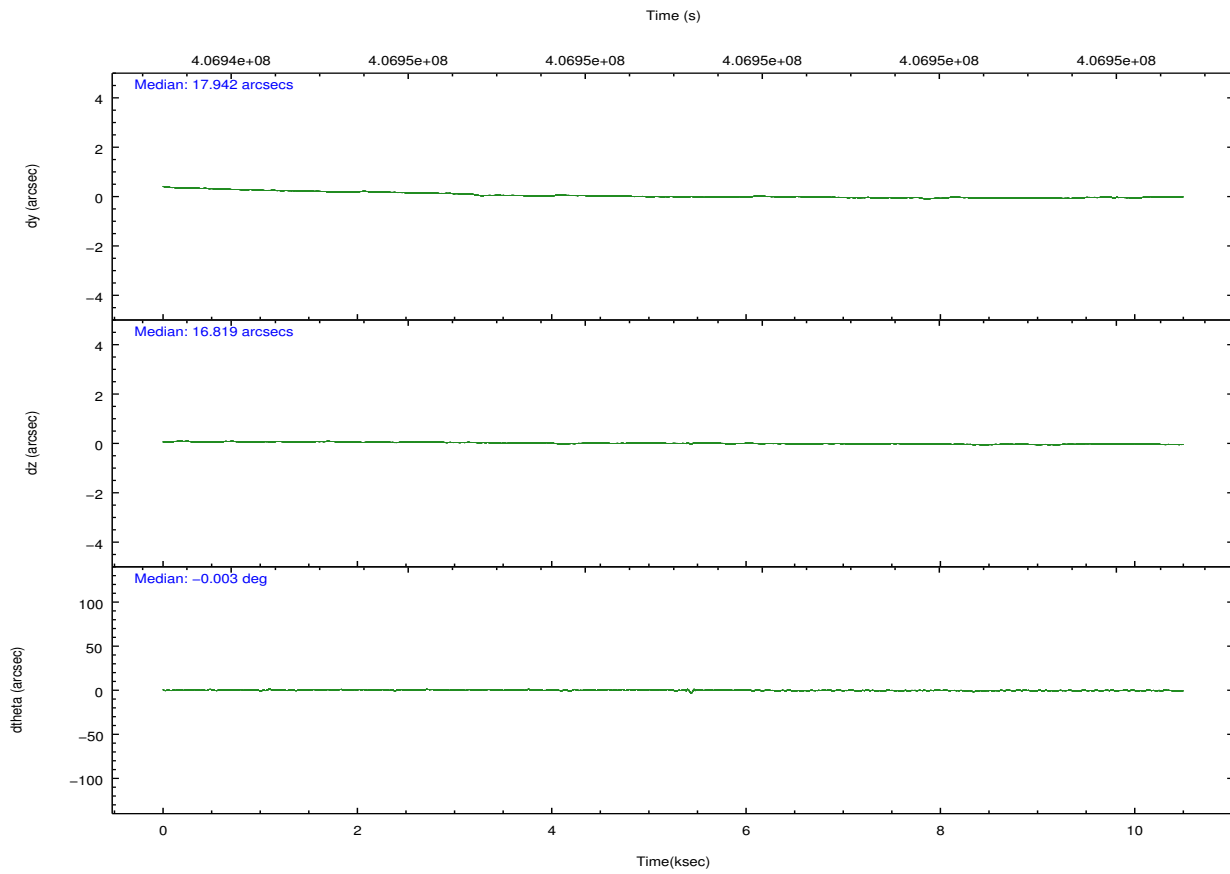
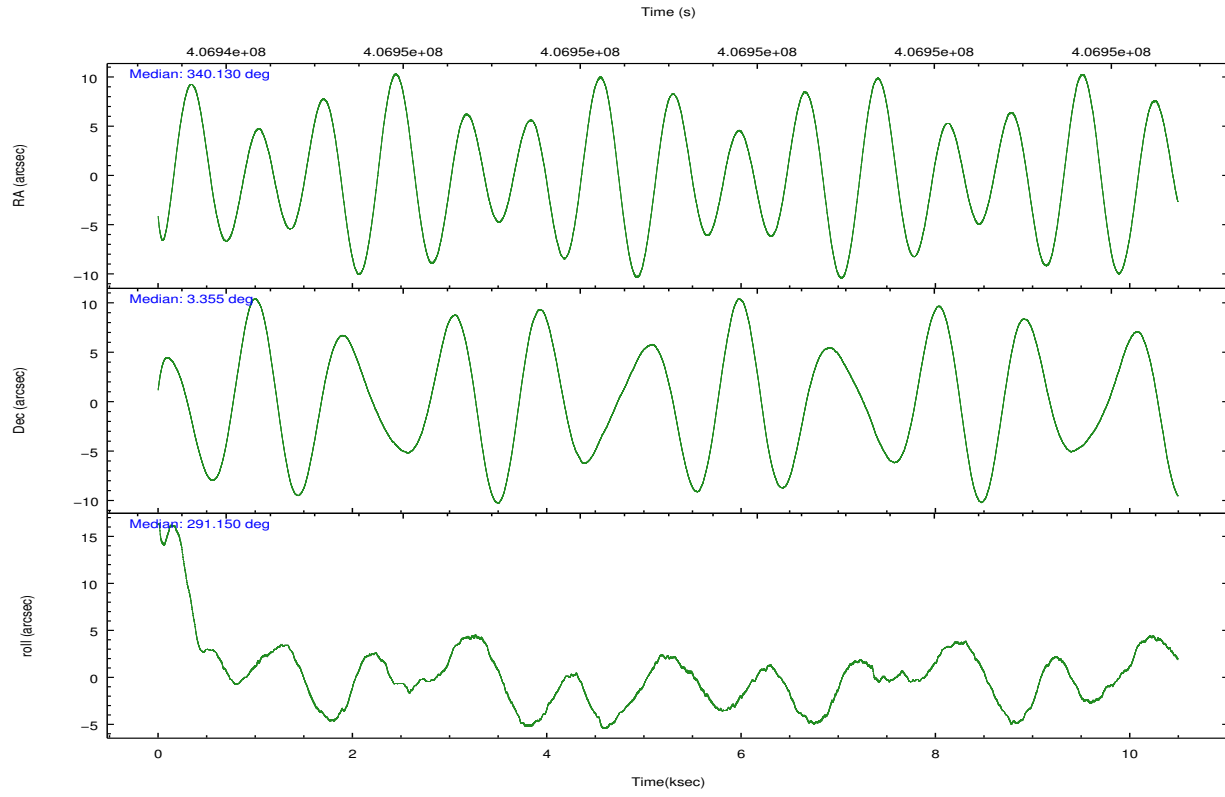
	ccd 2	ccd 3	ccd 6	ccd 7	ccd 8
grade 0 events	1348	1616	1469	2161	3735
	3%	4%	3%	4%	7%
grade 1 events	19	22	14	46	26
	0%	0%	0%	0%	0%
grade 2 events	983	887	947	4424	2870
	2%	2%	2%	9%	5%
grade 3 events	516	537	525	2121	1410
	1%	1%	1%	4%	2%
grade 4 events	489	524	510	2134	1343
	1%	1%	1%	4%	2%
grade 5 events	1442	1594	1763	4888	2429
	3%	4%	4%	10%	4%
grade 6 events	739	840	928	10548	3427
	1%	2%	2%	22%	6%
grade 7 events	32661	30276	33324	19938	36361
	85%	83%	84%	43%	70%

2.2 Compared Parameters

Parameter	Planned	Actual	Parameter	Planned	Actual
Instrument	ACIS	ACIS	Obspar format version number	7	7
Detector	ACIS-23678	ACIS-23678	Obspar file type	PREDICTED	ACTUAL
Grating	NONE	NONE	Obspar update status	NONE	UPDATED
Data mode	VFAINT	VFAINT	CCD I0 on	N	N
Observation mode	POINTING	POINTING	CCD I1 on	N	N
[deg] Pointing RA	340.108553	340.1301537108544	CCD I2 on	O4	Y
[deg] Pointing Dec	3.371931	3.355074719872864	CCD I3 on	O3	Y
[deg] Pointing Roll	291.001047	291.1564060500749	CCD S0 on	N	N
[mm] SIM focus pos	-0.684267	-0.6828225247311905	CCD S1 on	N	N
[mm] SIM defocus	0	0.001444936568705701	CCD S2 on	O1	Y
[mm] SIM translation stage pos	-190.132523	-190.1400660498719	CCD S3 on	Y	Y
[mm] SIM translation stage offset	0	0.00754346686406393	CCD S4 on	O2	Y
[s] Observation start time (MET)	406944241.184000	406942977.36566	CCD S5 on	N	N
Observation start date	2010-11-24T00:02:55	2010-11-23T23:42:57	Number of optional ACIS chips dropped	0	0
[s] Observation end time (MET)	406954241.184000	406955316.31629	On-chip summing requested	N	N
Observation end date	2010-11-24T02:49:35	2010-11-24T03:08:36	Subarray requested	CUSTOM	1/2
Read mode	TIMED	TIMED	Subarray start row	257	257
			Subarray row count	512	512
			Alternating exposures requested	N	N
			[s] Primary exposure time	0.000000	1.7

2.3 Aspect



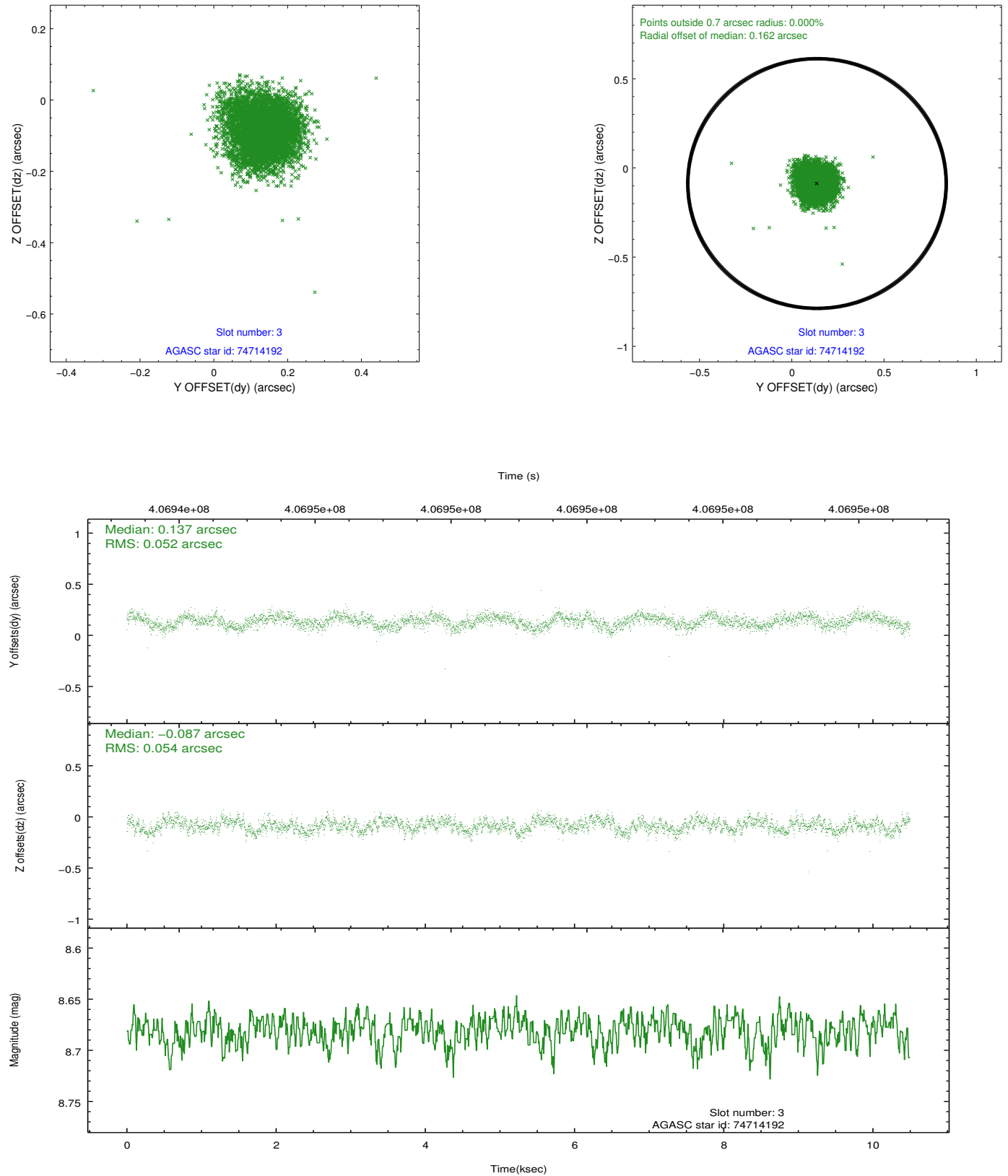


Slot Statistics

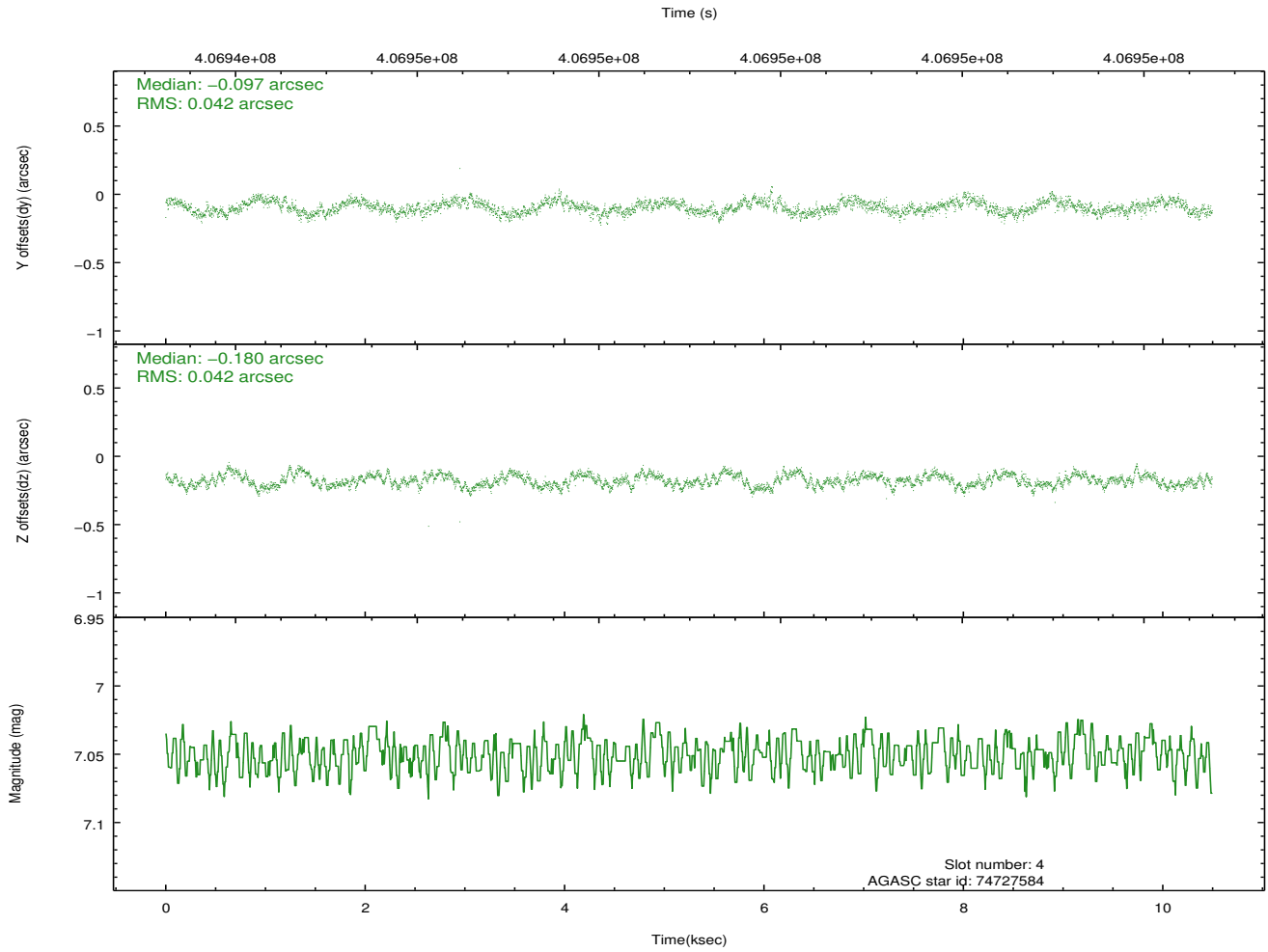
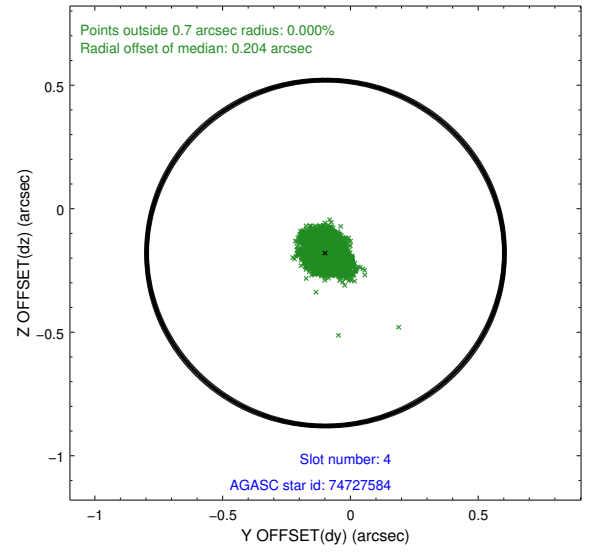
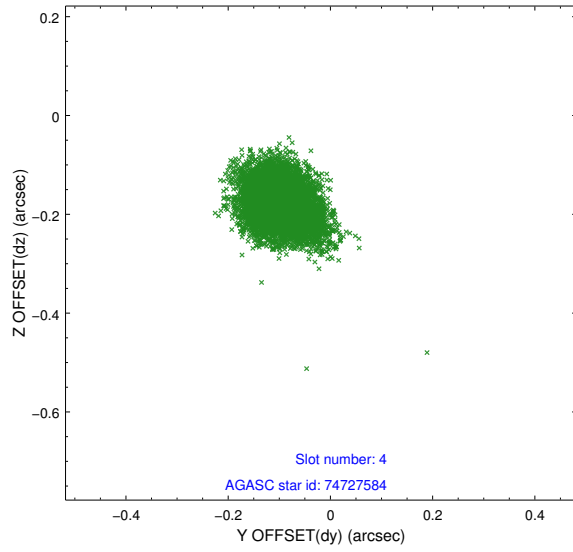
slot	status	id	mag	n_pts	med_dy	med_dz	dr1	dr2	ra	dec	mean_y	mean_z
0	FID	ACIS-S-2	6.90	2560	-0.080	-0.037	0.007	0.011	0.000000	0.000000	-771.15	-1738.28
1	FID	ACIS-S-4	6.98	2560	0.236	0.049	0.007	0.015	0.000000	0.000000	2142.24	169.73
2	FID	ACIS-S-5	7.01	2560	-0.187	-0.003	0.007	0.014	0.000000	0.000000	-1823.44	163.97
3	GUIDE	74714192	8.68	5114	0.137	-0.087	0.080	0.126	339.623837	3.342441	-525.03	-1664.13
4	GUIDE	74727584	7.05	5120	-0.097	-0.180	0.063	0.099	339.633744	3.463732	-920.18	-1474.67
5	GUIDE	74842128	8.54	5121	0.017	-0.045	0.086	0.132	340.118134	3.132788	816.30	-276.72
6	GUIDE	74854992	8.28	5119	-0.084	-0.046	0.077	0.125	340.342808	3.603730	-477.13	1084.60
7	GUIDE	74855640	8.83	5095	0.047	0.368	0.197	0.268	340.341123	3.746937	-960.96	1264.52

2.4 Star Slots

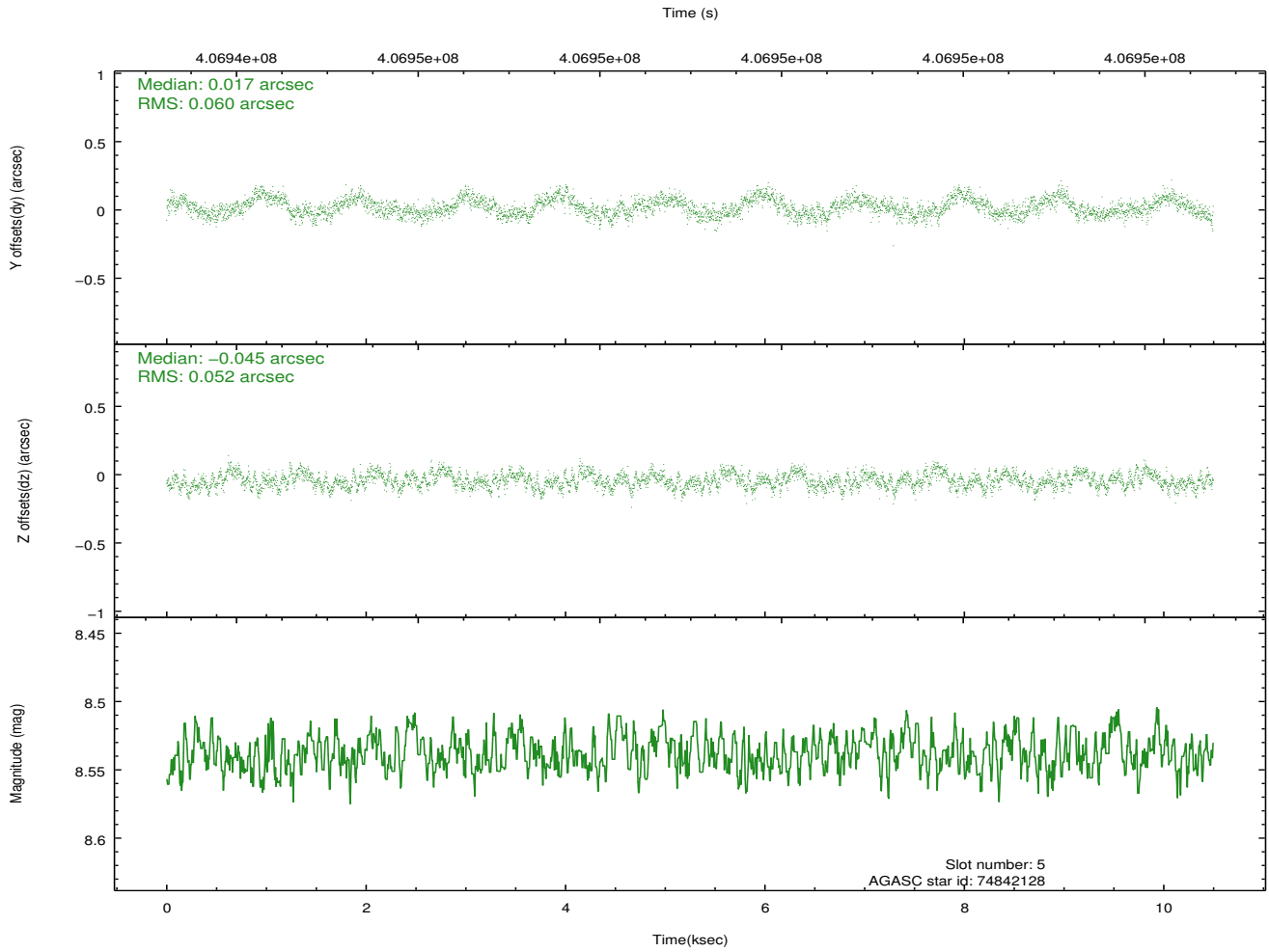
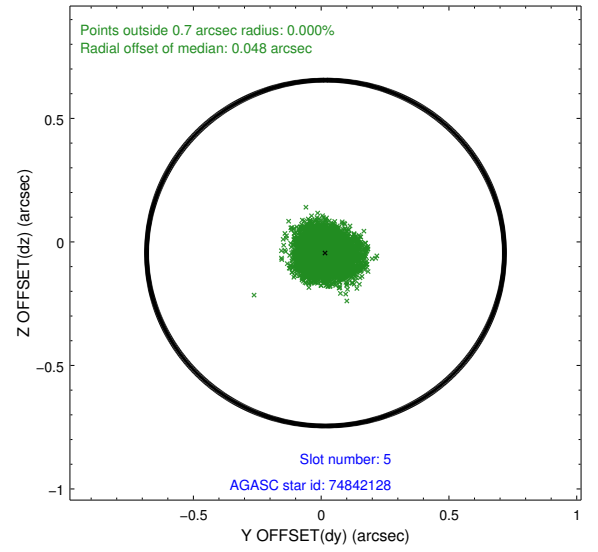
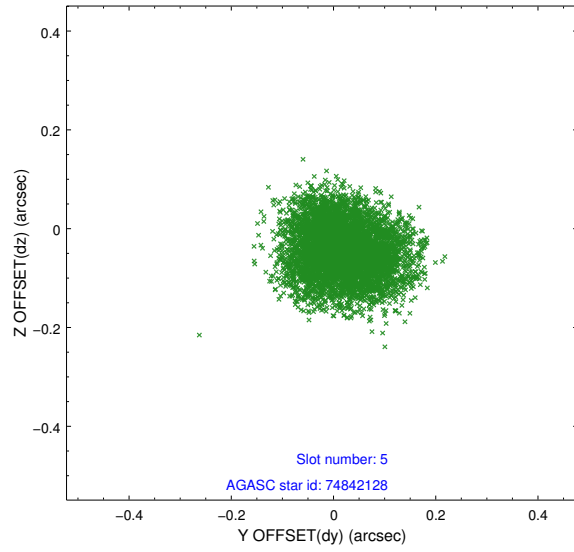
2.4.1 Slot 3



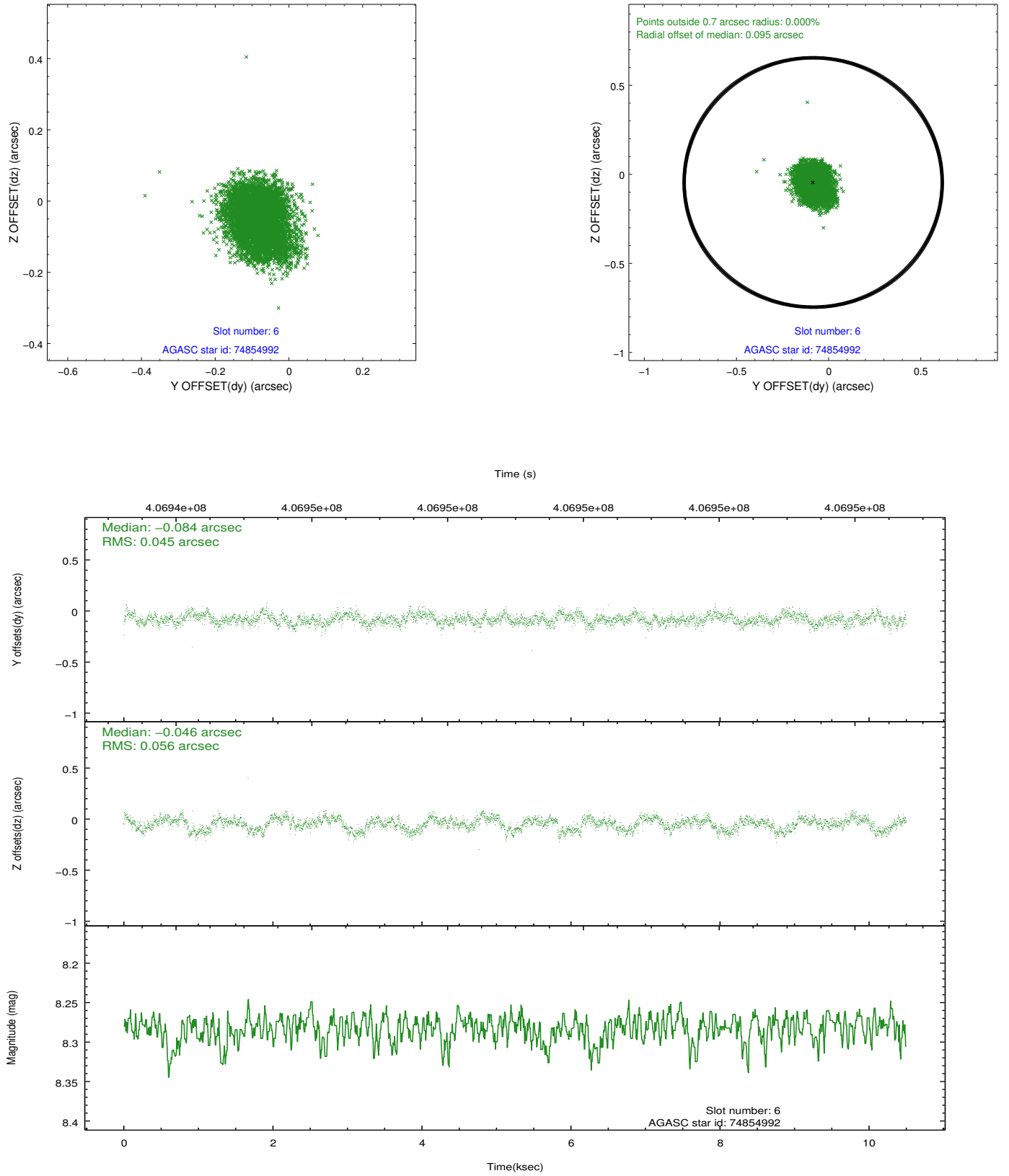
2.4.2 Slot 4



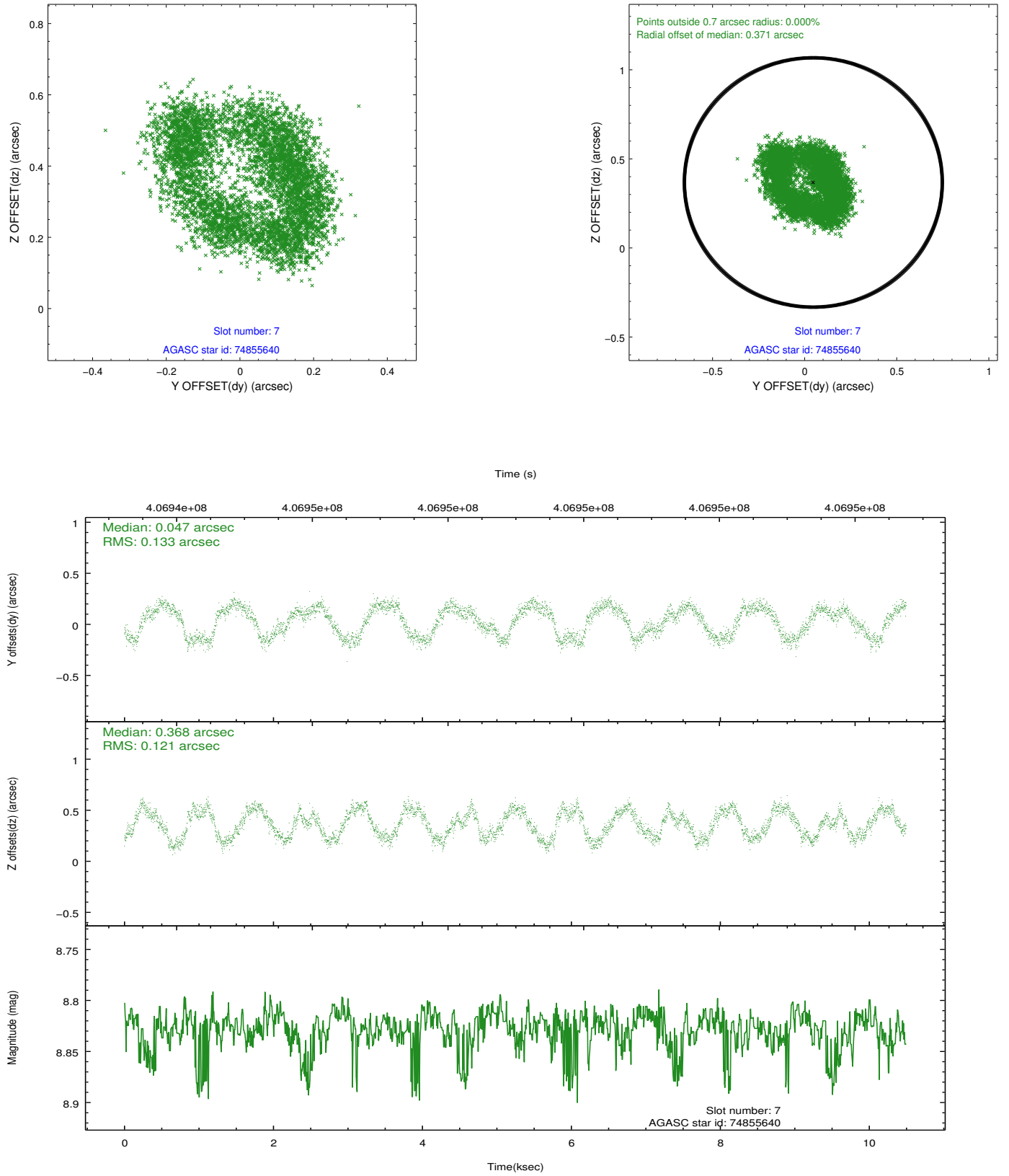
2.4.3 Slot 5



2.4.4 Slot 6

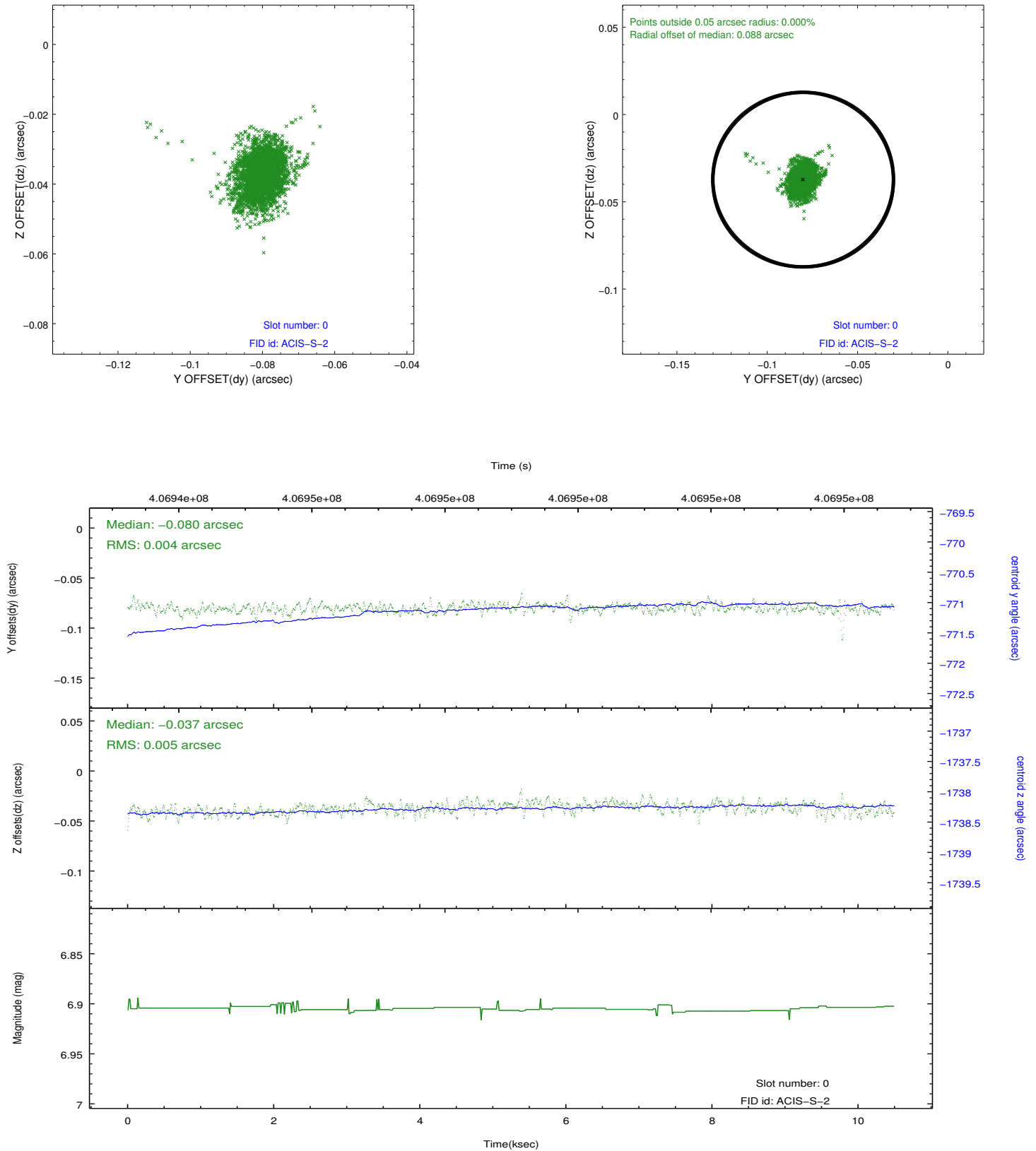


2.4.5 Slot 7

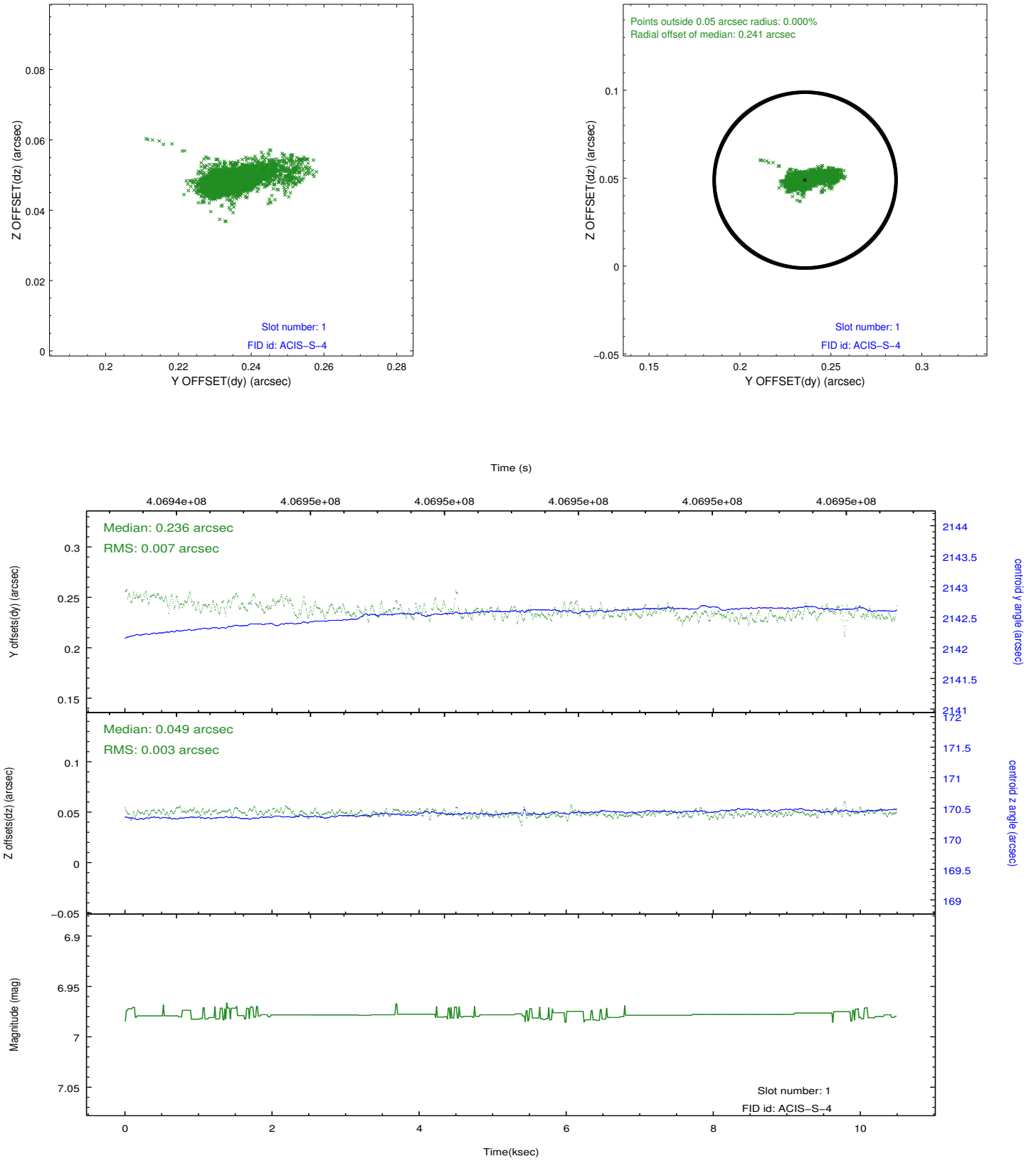


2.5 FID Slots

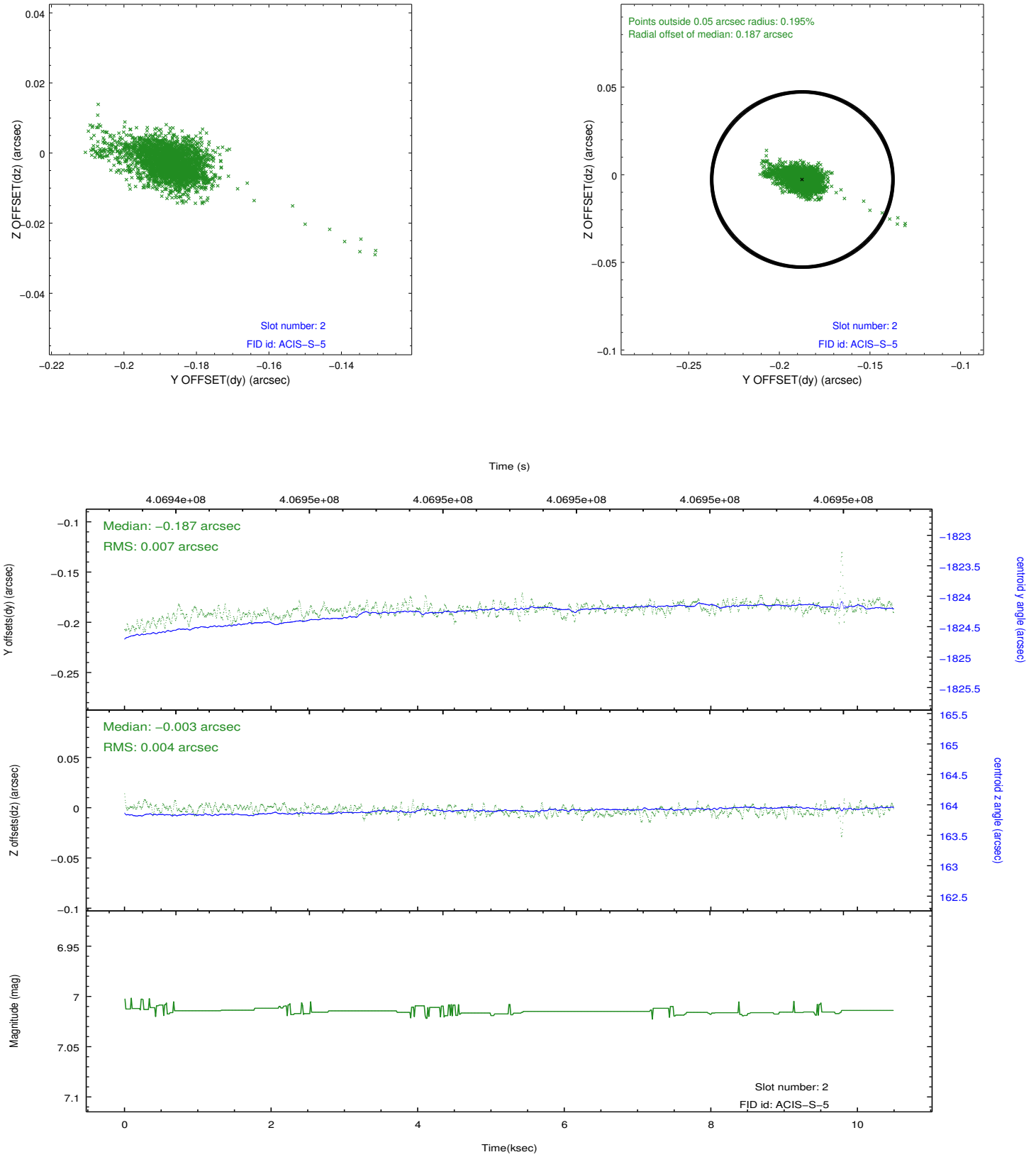
2.5.1 Slot 0



2.5.2 Slot 1



2.5.3 Slot 2



A Summary

A.1 Status

V&V Scientist	Jen Lauer
V&V Date (YYYY-MM-DD)	2012.07.16
V&V Edition	1
V&V Disposition and Status	OK
V&V Charge Time	10.065699929476

A.2 Comments

Monitor constraint met, follows obs11538 by 53 days.