

V&V Reference Report

L2 ASCDS Version : 8.4.5

Observation 11502 - L2 Version 2
Chandra X-Ray Center

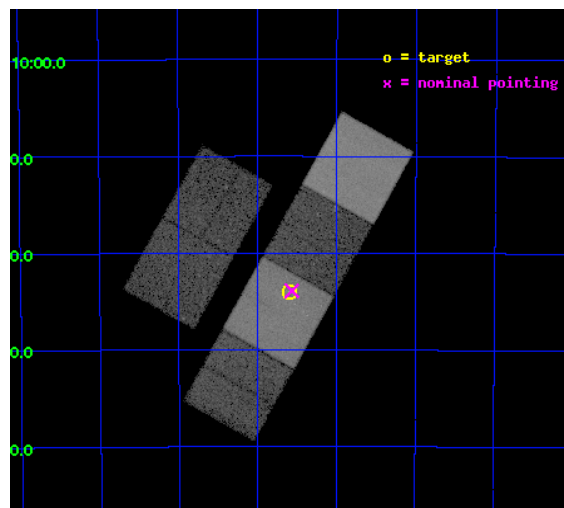
L2 Processing Date : Jun 20 2012

Contents

1	Front	2
2	OBI	3
2.1	OBI	3
2.1.1	Images	3
2.1.2	Bias	3
2.1.3	Parameters	4
2.1.4	Events	4
2.2	Compared Parameters	5
2.3	Aspect	6
2.4	Star Slots	9
2.4.1	Slot 3	9
2.4.2	Slot 4	10
2.4.3	Slot 5	11
2.4.4	Slot 6	12
2.4.5	Slot 7	13
2.5	FID Slots	14
2.5.1	Slot 0	14
2.5.2	Slot 1	15
2.5.3	Slot 2	16
A	Summary	17
A.1	Status	17
A.2	Comments	17

1 Front

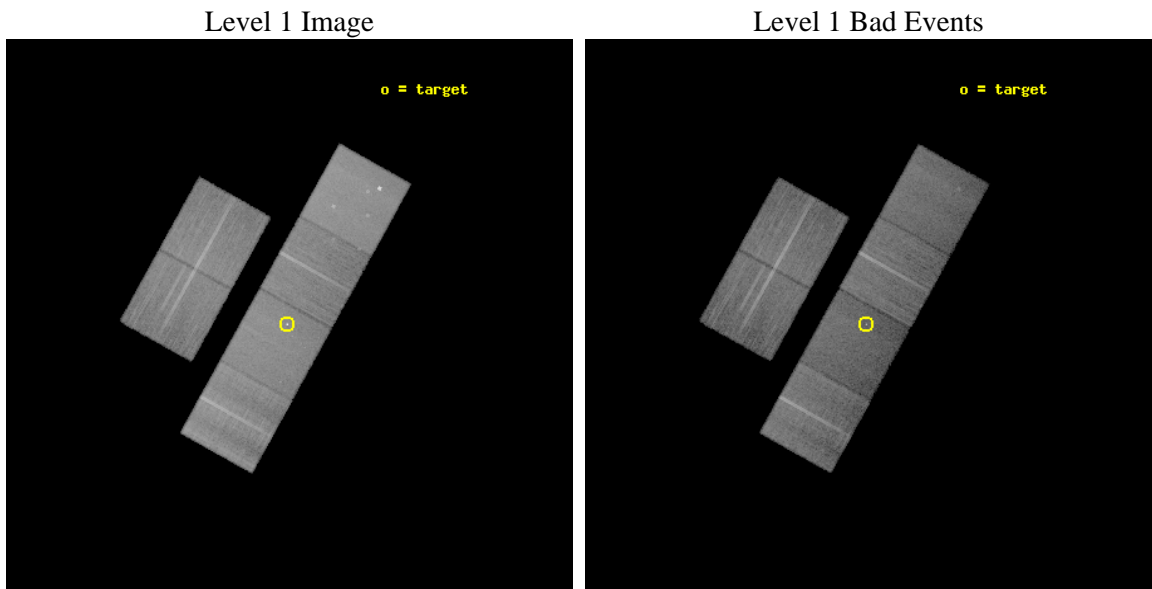
seq_num	702088	Sequence number
obs_id	11502	Observation id
title	The nature of active nuclei in radio galaxies: observations of the 2Jy sample	Proposal title
observer	Dr Martin Hardcastle	Principal investigator
object	PKS 1733-56	Source name
dtcycle	0	
cycle	P	events from which exps? Prim/Second/Both
ra_targ	264.399167	Observer's specified target RA [deg]
dec_targ	-56.567611	Observer's specified target Dec [deg]
ra_nom	264.39153150729	Nominal RA [deg]
dec_nom	-56.565244867708	Nominal Dec [deg]
roll_nom	119.07530568047	Nominal Roll [deg]
revision	2	Processing version of data
ontime	20115.199925125	Sum of GTIs [s]
livetime	19860.489151753	Livetime [s]
ontime2	20115.199925125	Sum of GTIs [s]
ontime3	20115.199925125	Sum of GTIs [s]
ontime5	20115.199925125	Sum of GTIs [s]
ontime6	20115.199925125	Sum of GTIs [s]
ontime7	20115.199925125	Sum of GTIs [s]
ontime8	20108.7180143	Sum of GTIs [s]
l2events	276216	Number of level 2 events



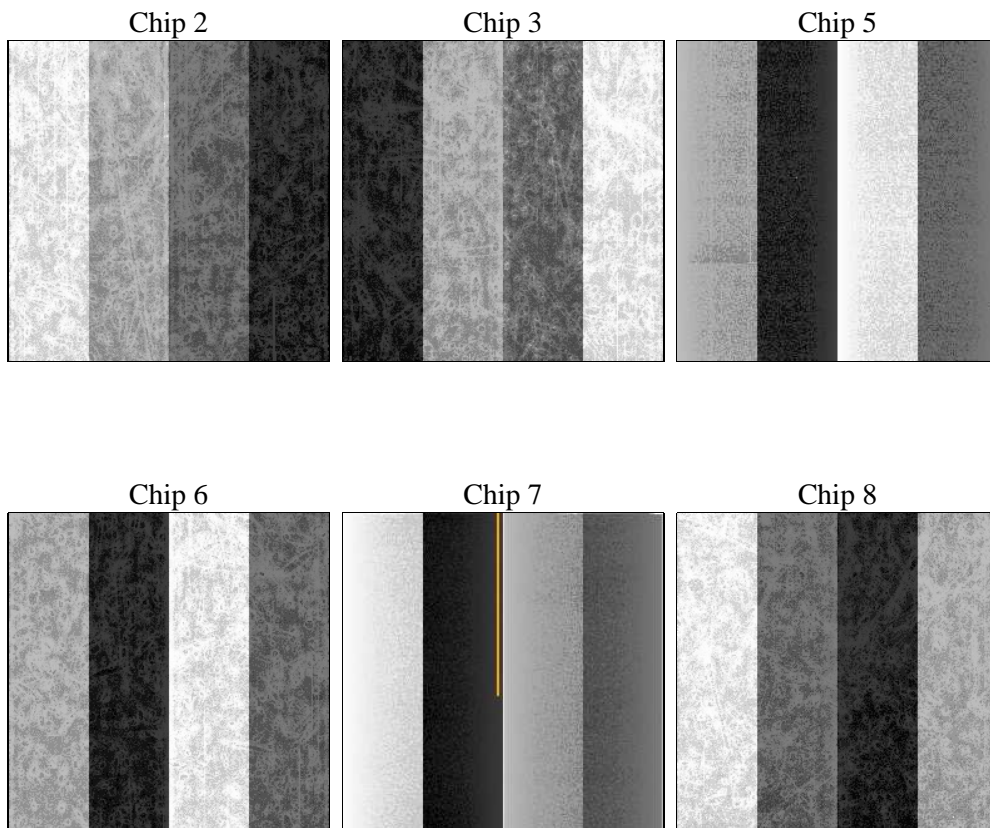
2 OBI

2.1 OBI

2.1.1 Images



2.1.2 Bias



2.1.3 Parameters

obi_num	0	Obi number	sched_exp_time	20000.000000	[s] Scheduled observation exposure time
ascdsver	8.4.5	Processing system revision	ontime	20115.199925125	Sum of GTIs [s]
caldsver	4.4.10	 	ontime2	20115.199925125	Sum of GTIs [s]
date	2012-06-20T12:26:29	Date and time of file creation	ontime3	20115.199925125	Sum of GTIs [s]
revision	2	Processing version of data	ontime5	20115.199925125	Sum of GTIs [s]
			ontime6	20115.199925125	Sum of GTIs [s]
			ontime7	20115.199925125	Sum of GTIs [s]
			ontime8	20108.7180143	Sum of GTIs [s]
			l1events	1255835	Number of level 1 events

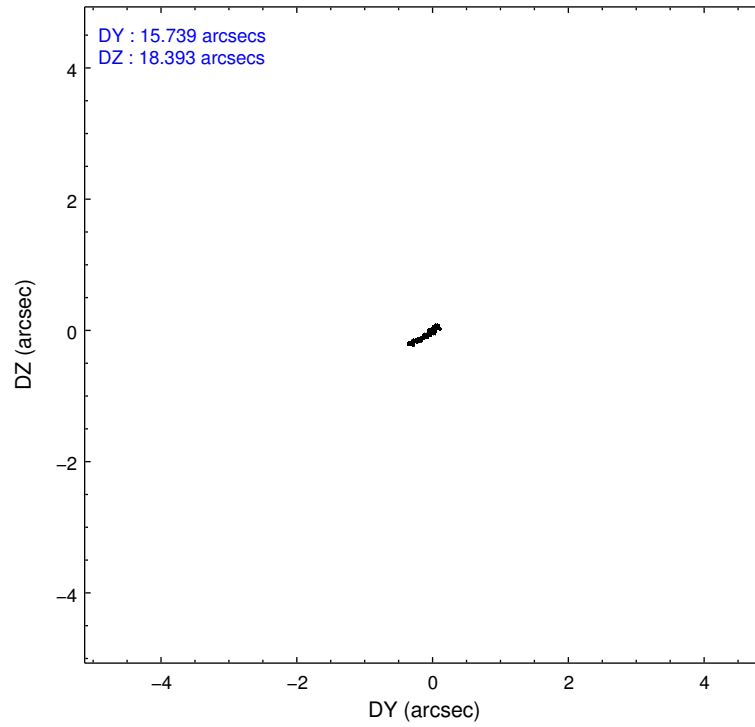
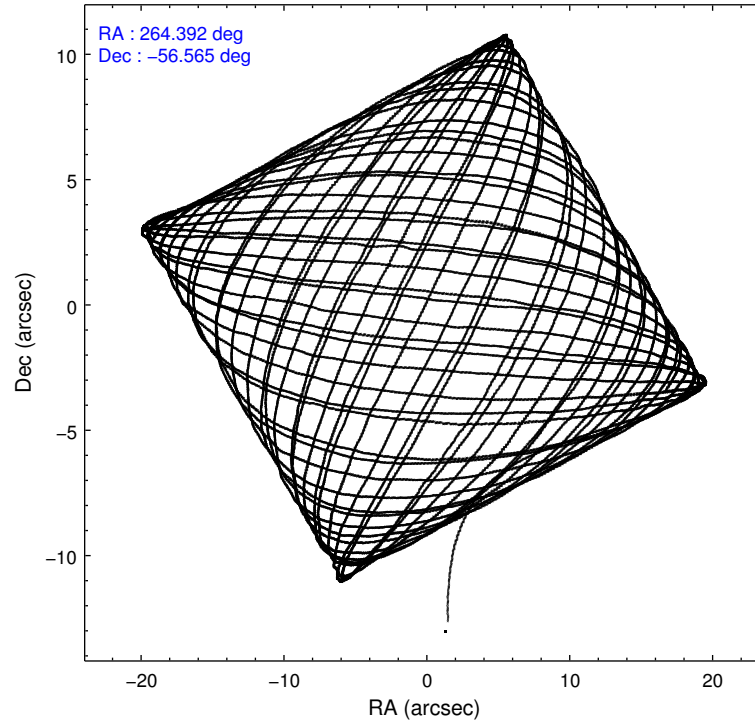
2.1.4 Events

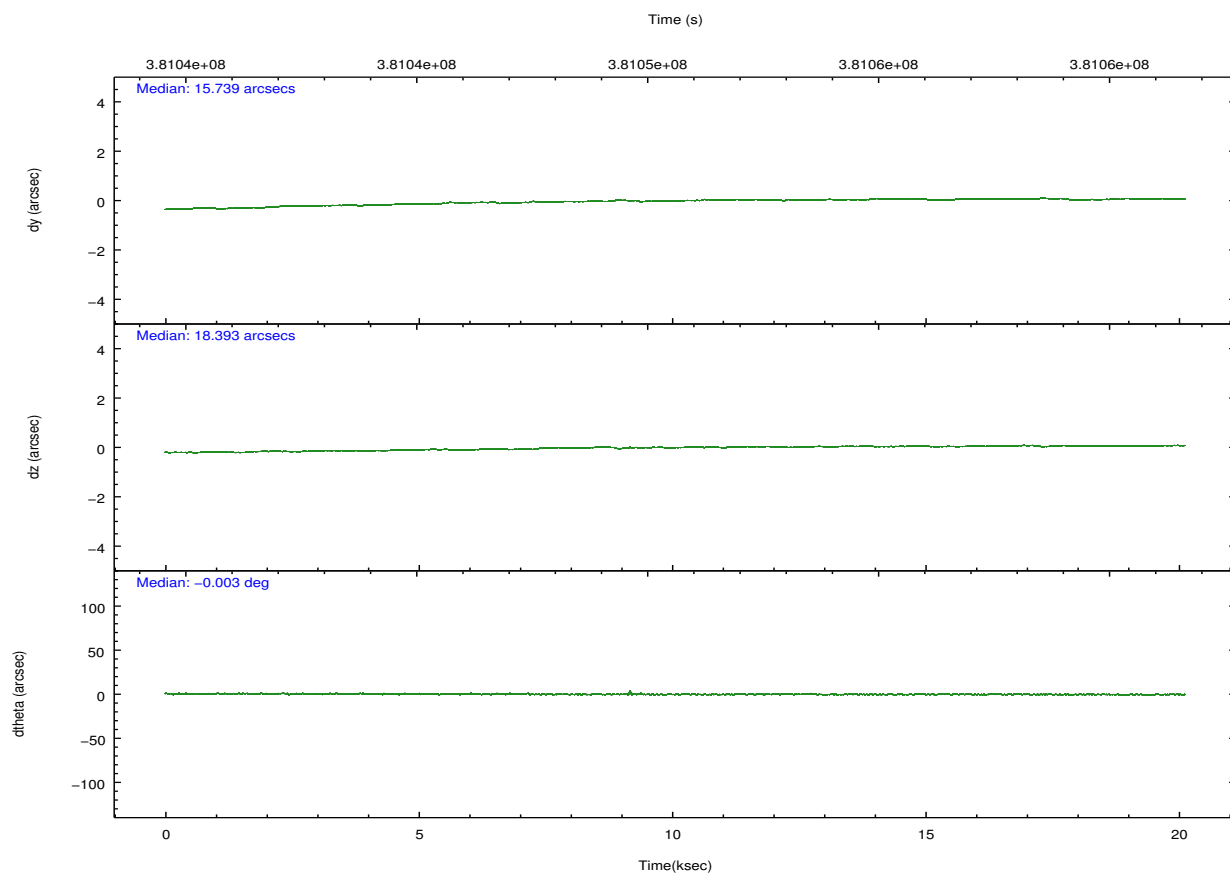
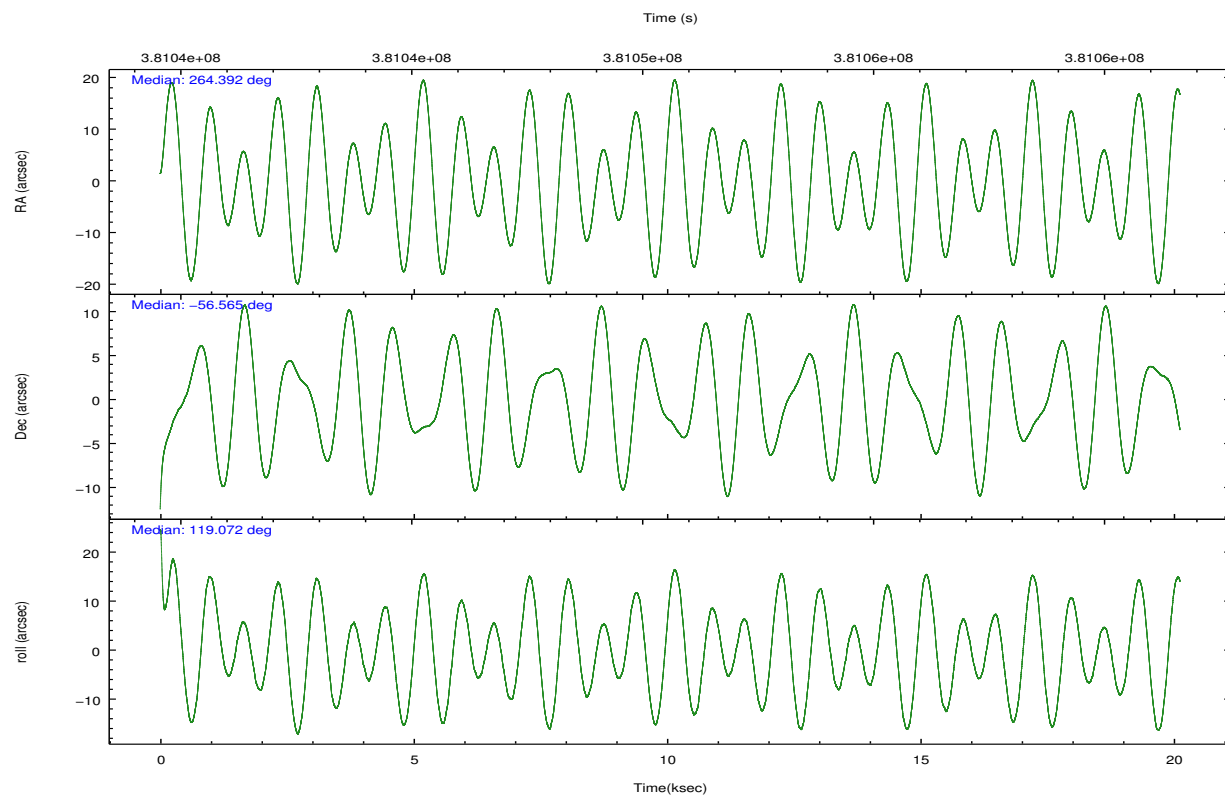
	ccd 2	ccd 3	ccd 5	ccd 6	ccd 7	ccd 8		ccd 2	ccd 3	ccd 5	ccd 6	ccd 7	ccd 8
level 1 events	191766	175208	263166	180835	213121	231739	grade 0 events	7191	6824	13293	7810	10578	18802
rejected events	173500	158171	135655	161339	117581	173641		3%	3%	5%	4%	4%	8%
rejected %	90%	90%	51%	89%	55%	74%	grade 1 events	112	96	647	111	293	178
								0%	0%	0%	0%	0%	0%
							grade 2 events	4632	3908	42856	4460	21190	13963
								2%	2%	16%	2%	9%	6%
							grade 3 events	1939	1911	5379	2048	9134	6627
								1%	1%	2%	1%	4%	2%
							grade 4 events	1999	1924	5209	2002	9021	6116
								1%	1%	1%	1%	4%	2%
							grade 5 events	6493	7381	20084	7372	21790	10770
								3%	4%	7%	4%	10%	4%
							grade 6 events	3551	3413	67590	4195	50603	15898
								1%	1%	25%	2%	23%	6%
							grade 7 events	165849	149751	108108	152837	90512	159385
								86%	85%	41%	84%	42%	68%

2.2 Compared Parameters

Parameter	Planned	Actual	Parameter	Planned	Actual
Instrument	ACIS	ACIS	Obspar format version number	7	7
Detector	ACIS-235678	ACIS-235678	Obspar file type	PREDICTED	ACTUAL
Grating	NONE	NONE	Obspar update status	NONE	UPDATED
Data mode	VFAINT	VFAINT	CCD I0 on	N	N
Observation mode	POINTING	POINTING	CCD I1 on	N	N
[deg] Pointing RA	264.434424	264.3915315072949	CCD I2 on	O1	Y
[deg] Pointing Dec	-56.578969	-56.56524486770758	CCD I3 on	O2	Y
[deg] Pointing Roll	118.954473	119.0753056804712	CCD S0 on	N	N
[mm] SIM focus pos	-0.684267	-0.6828225247311905	CCD S1 on	O3	Y
[mm] SIM defocus	0	0.001444936568705701	CCD S2 on	Y	Y
[mm] SIM translation stage pos	-190.132523	-190.145094680475	CCD S3 on	Y	Y
[mm] SIM translation stage offset	0	0.01257209746719923	CCD S4 on	Y	Y
[s] Observation start time (MET)	381040652.184000	381039082.2555	CCD S5 on	N	N
Observation start date	2010-01-28T04:36:26	2010-01-28T04:11:22	Number of optional ACIS chips dropped	0	0
[s] Observation end time (MET)	381060652.184000	381061661.98164	On-chip summing requested	N	N
Observation end date	2010-01-28T10:09:46	2010-01-28T10:27:41	Subarray requested	NONE	NONE
Read mode	TIMED	TIMED	Alternating exposures requested	N	N
			[s] Primary exposure time	0.000000	3.2

2.3 Aspect



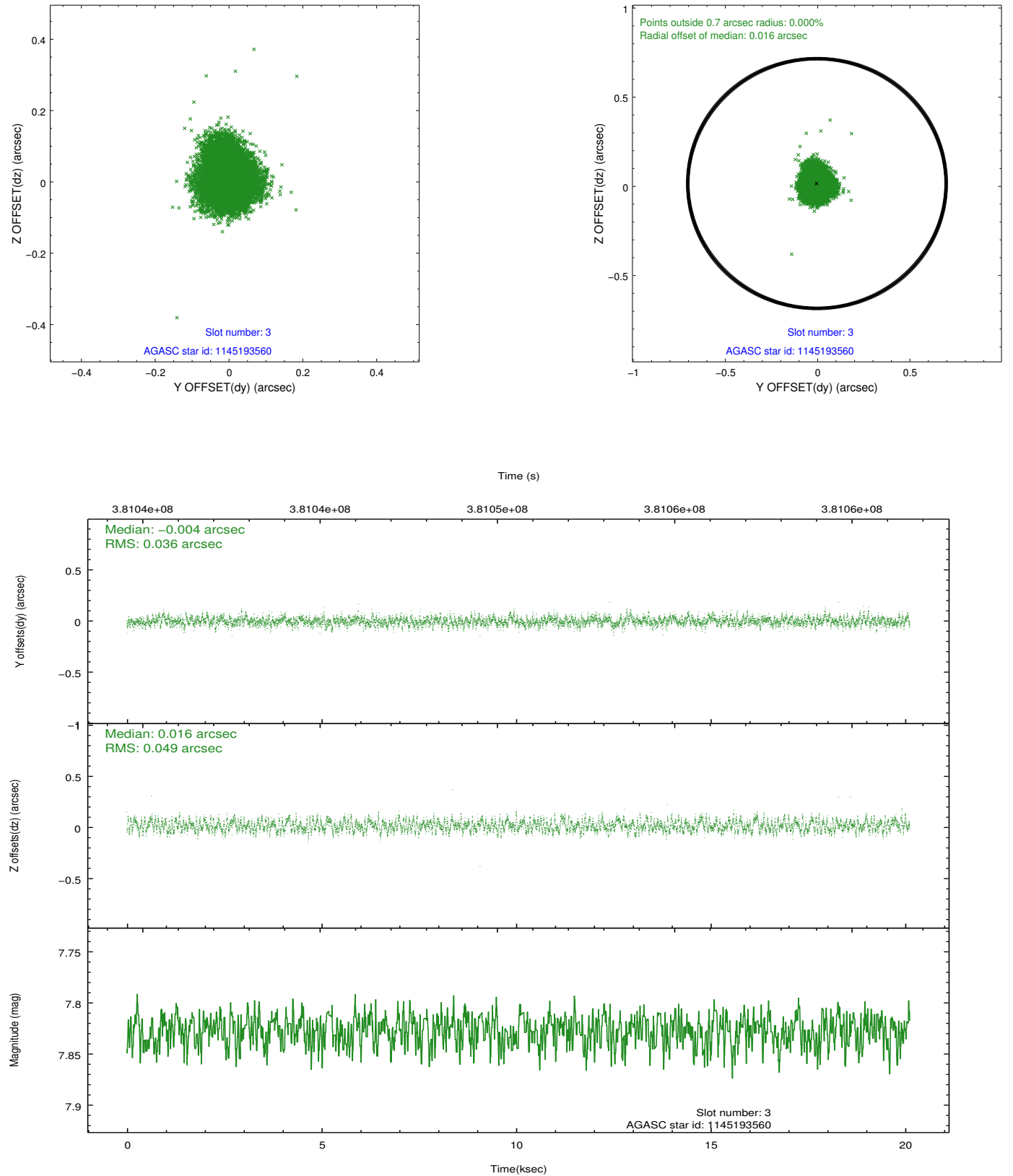


Slot Statistics

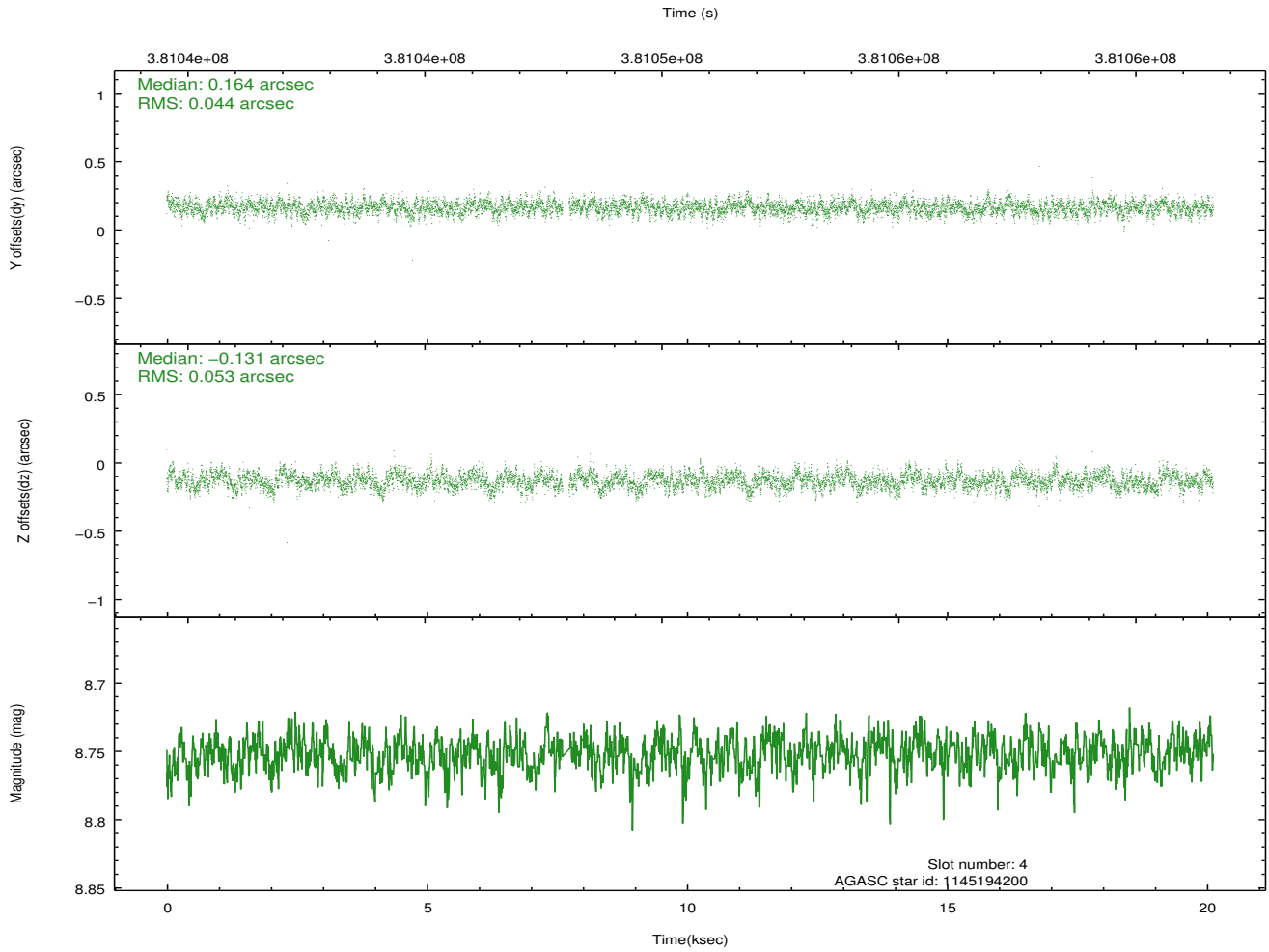
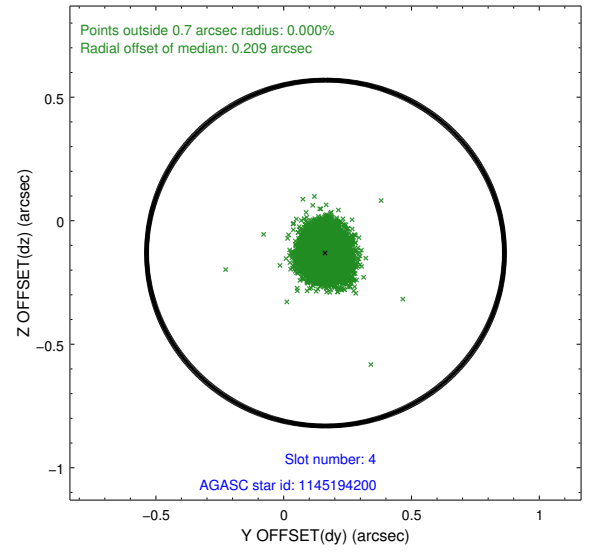
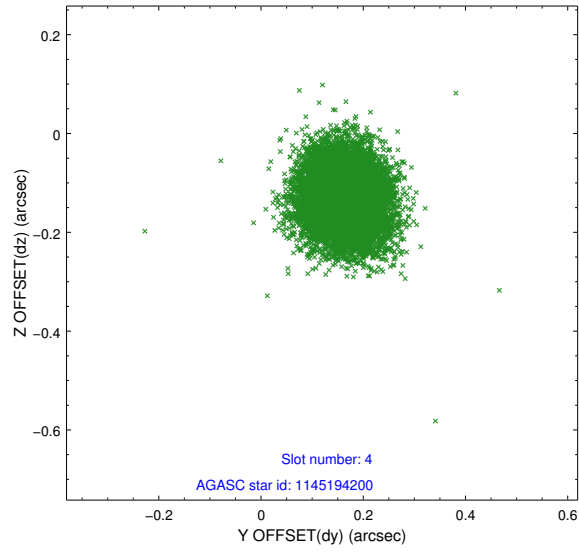
slot	status	id	mag	n_pts	med_dy	med_dz	dr1	dr2	ra	dec	mean_y	mean_z
0	FID	ACIS-S-2	6.88	4908	-0.072	-0.056	0.007	0.011	0.000000	0.000000	-768.79	-1739.76
1	FID	ACIS-S-4	6.97	4908	0.169	0.050	0.006	0.011	0.000000	0.000000	2144.69	168.56
2	FID	ACIS-S-5	7.00	4909	-0.128	0.015	0.006	0.011	0.000000	0.000000	-1821.40	162.51
3	GUIDE	1145193560	7.83	9811	-0.004	0.016	0.065	0.102	263.737970	-56.914504	-400.48	1785.90
4	GUIDE	1145194200	8.75	9754	0.164	-0.131	0.073	0.116	263.776450	-56.981421	-648.49	1834.03
5	GUIDE	1145195120	7.88	9811	-0.014	0.197	0.056	0.090	264.754238	-56.273464	651.65	-1090.46
6	GUIDE	1145069648	7.91	9810	-0.014	0.001	0.061	0.102	263.297957	-56.284378	2010.97	1482.94
7	GUIDE	1145197152	7.62	9812	-0.133	-0.086	0.055	0.090	263.401410	-56.431149	1447.63	1549.86

2.4 Star Slots

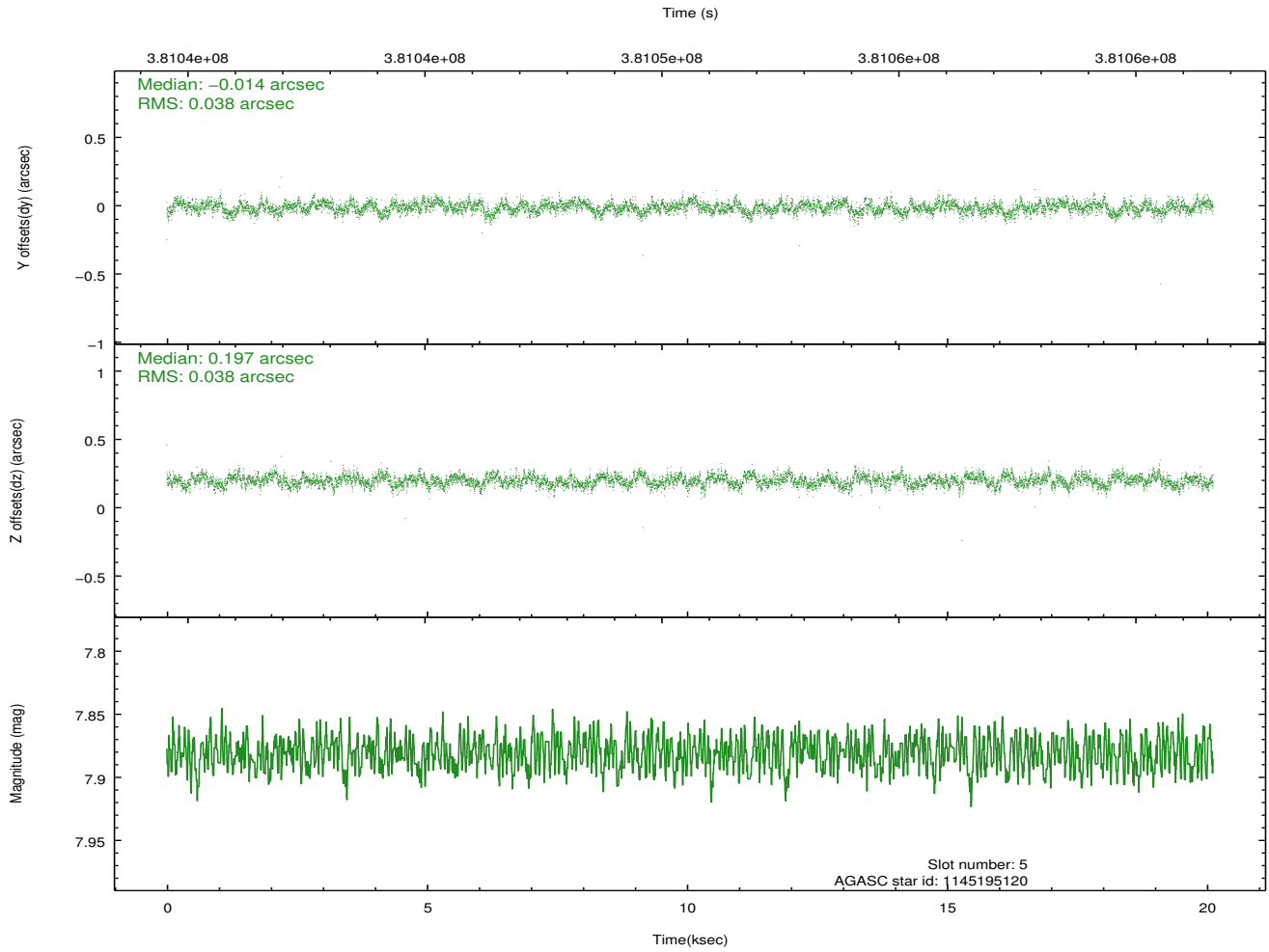
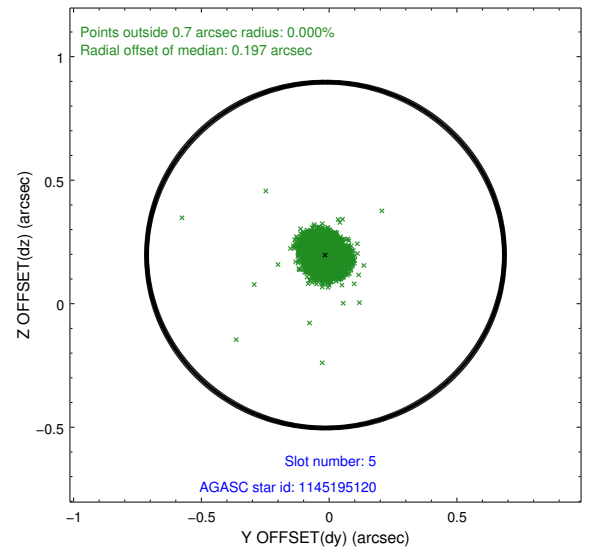
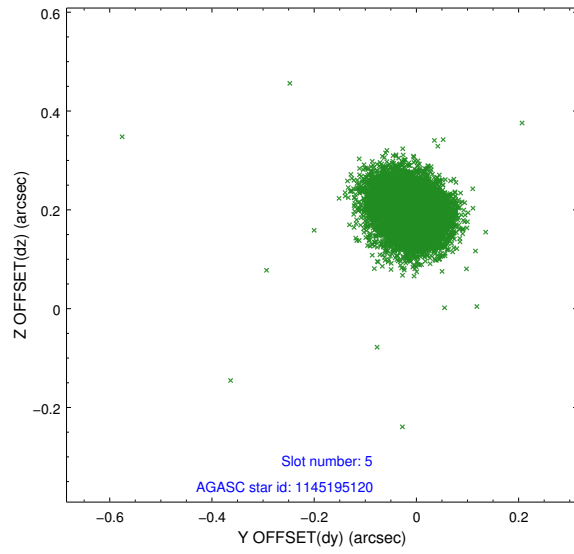
2.4.1 Slot 3



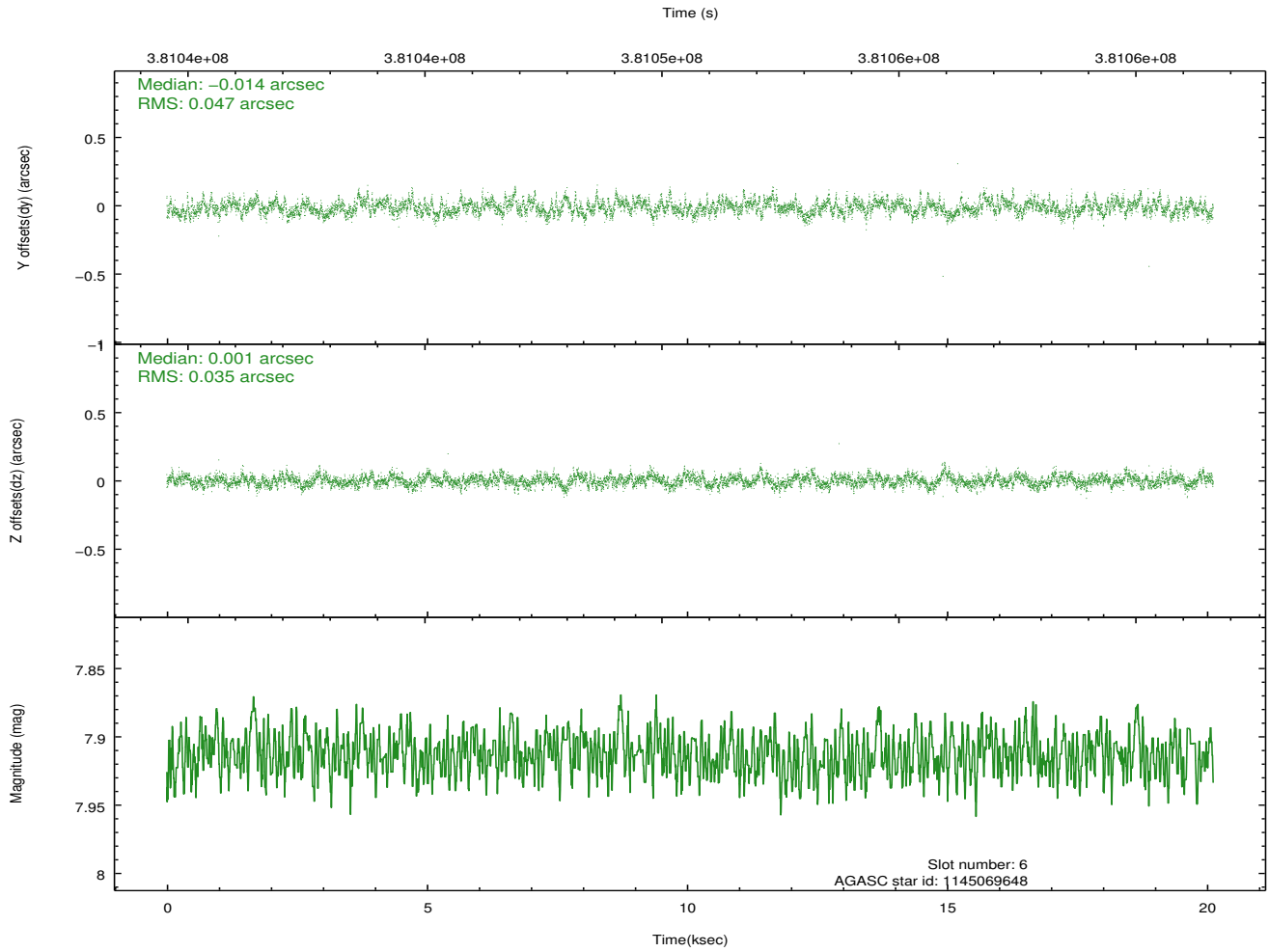
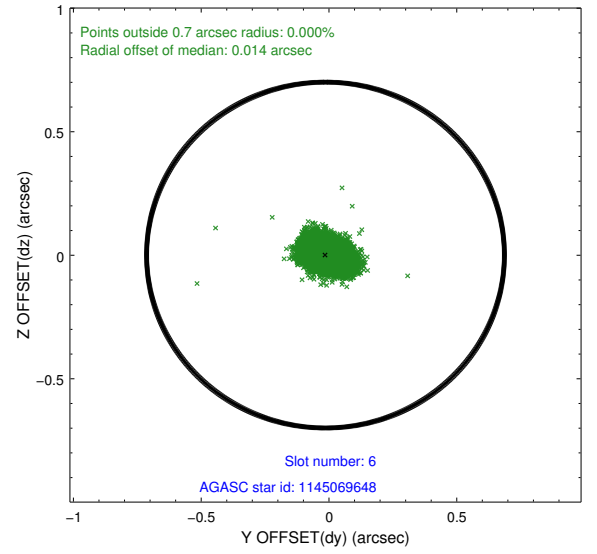
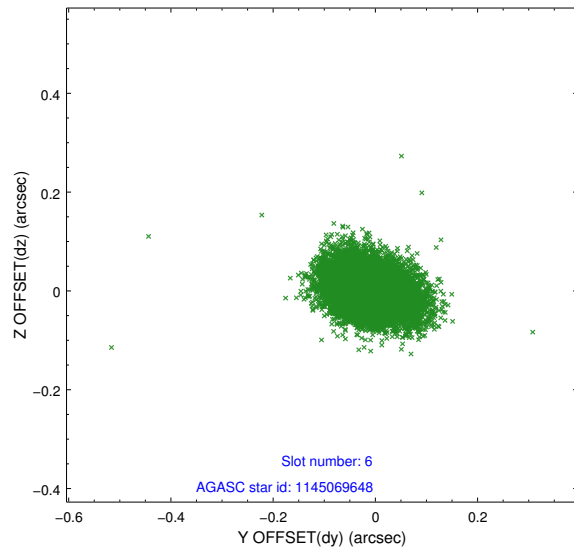
2.4.2 Slot 4



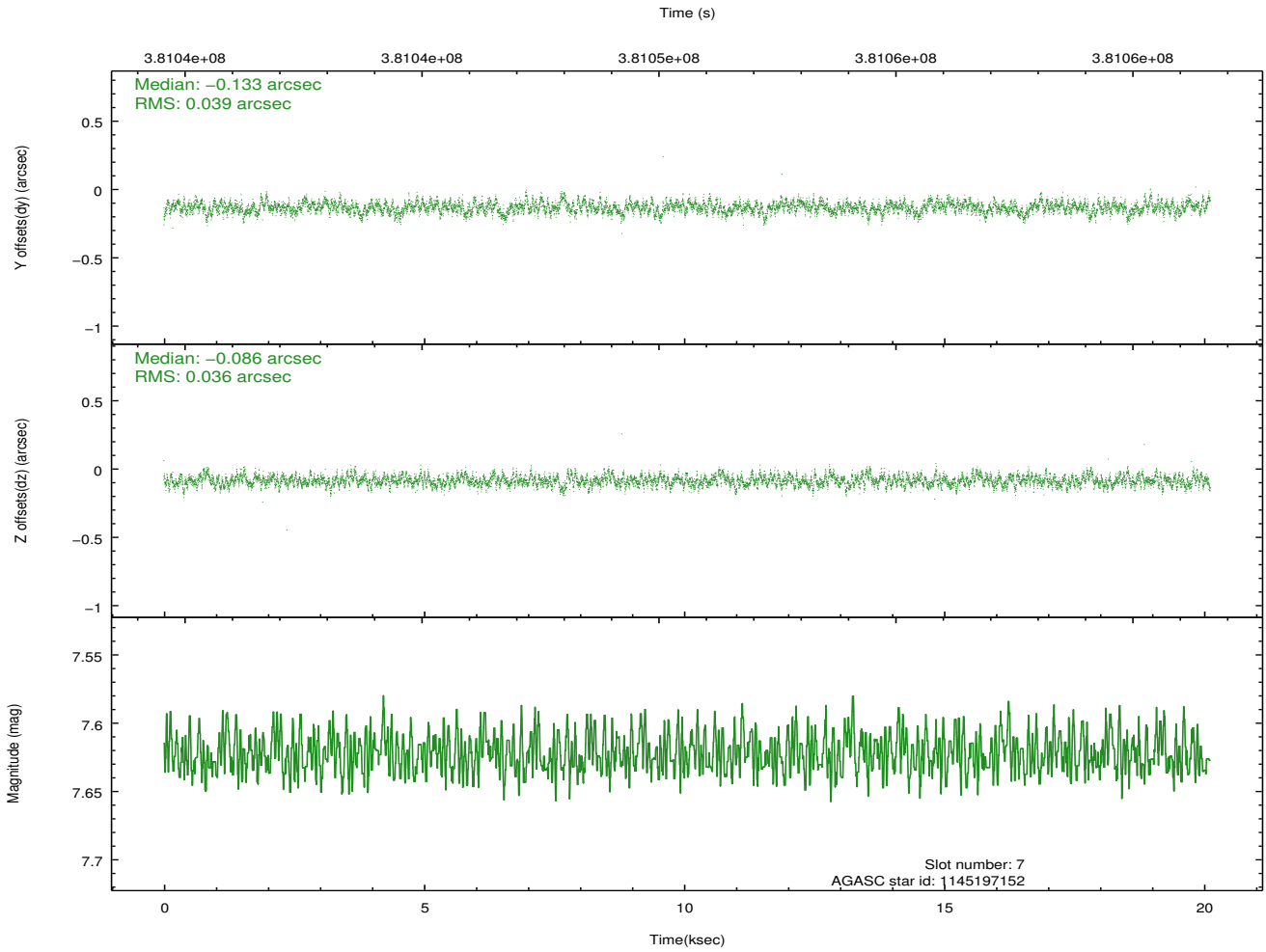
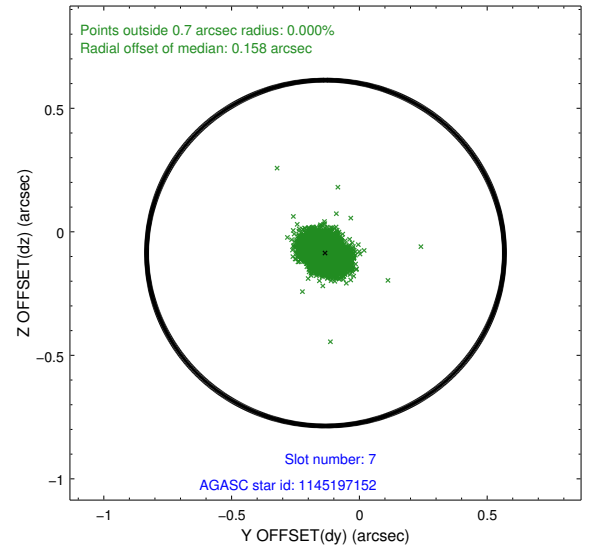
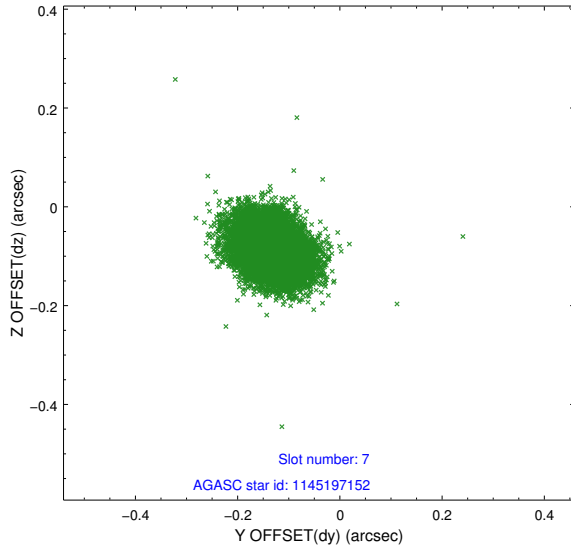
2.4.3 Slot 5



2.4.4 Slot 6

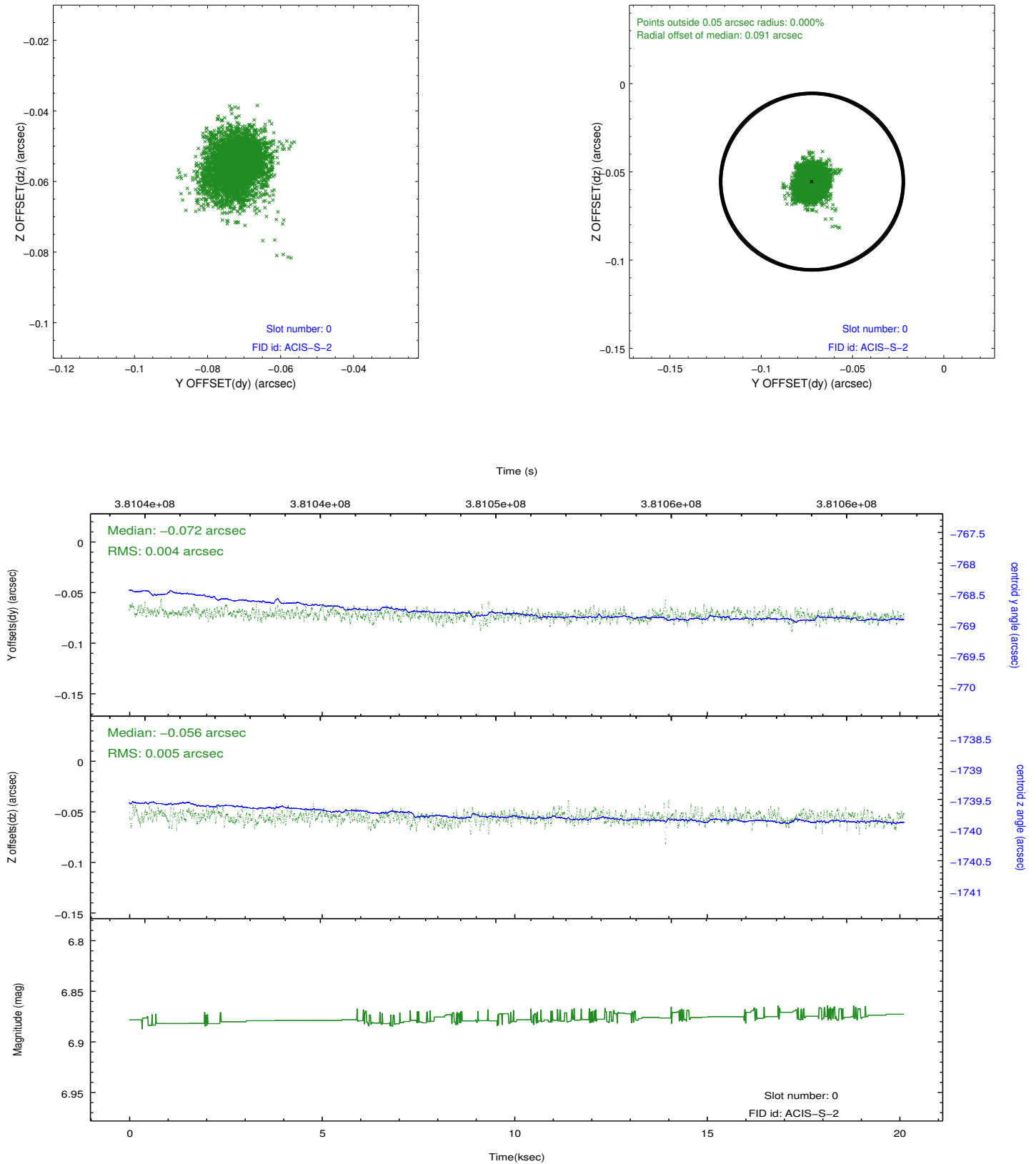


2.4.5 Slot 7

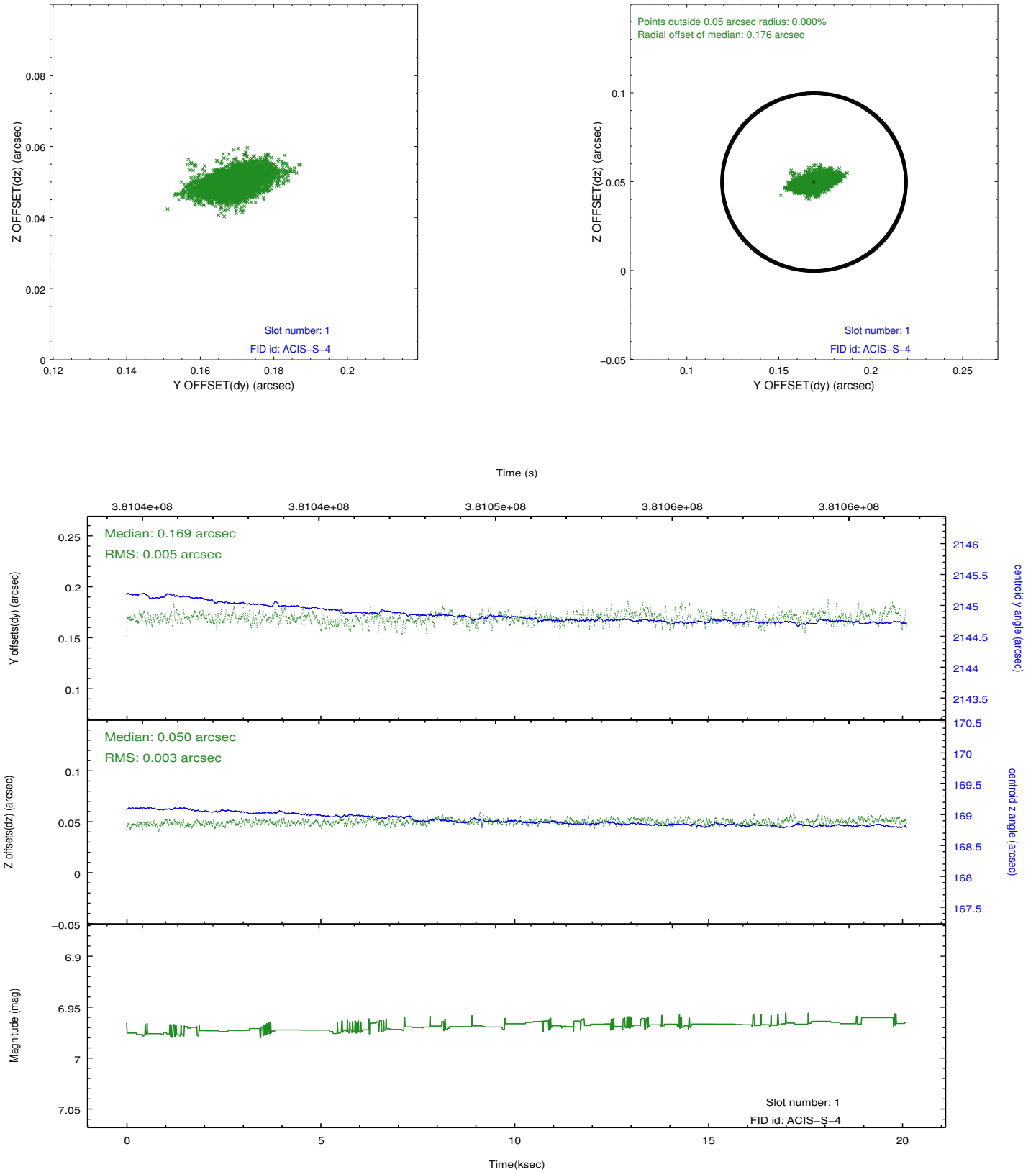


2.5 FID Slots

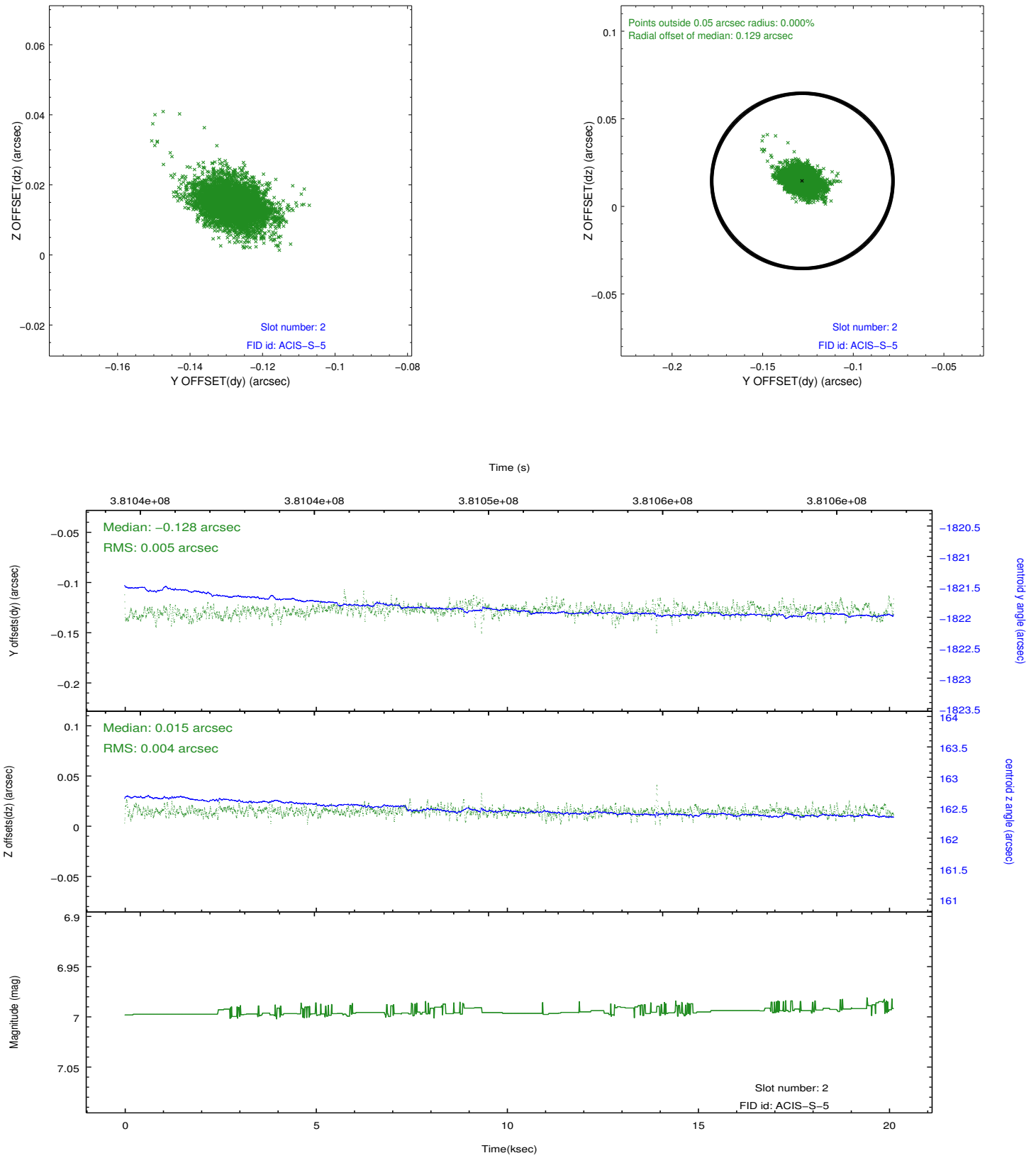
2.5.1 Slot 0



2.5.2 Slot 1



2.5.3 Slot 2



A Summary

A.1 Status

V&V Scientist	Jen Lauer
V&V Date (YYYY-MM-DD)	2012.06.26
V&V Edition	1
V&V Disposition and Status	OK
V&V Charge Time	20.115199925125

A.2 Comments