

V&V Reference Report

L2 ASCDS Version : 8.4.5

Observation 11501 - L2 Version 2
Chandra X-Ray Center

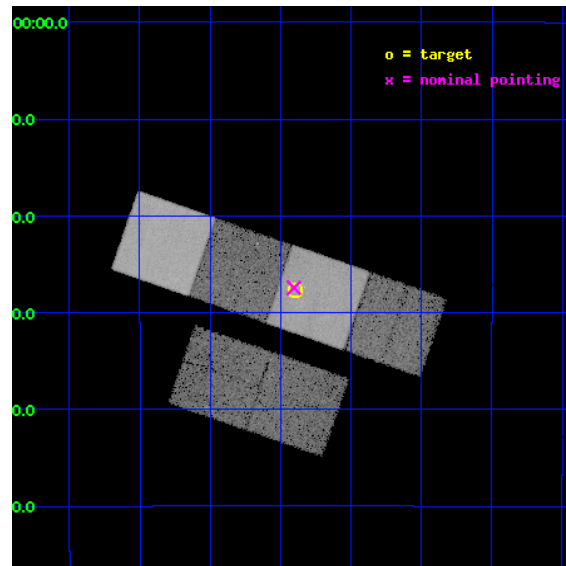
L2 Processing Date : Jun 19 2012

Contents

1	Front	2
2	OBI	3
2.1	OBI	3
2.1.1	Images	3
2.1.2	Bias	3
2.1.3	Parameters	4
2.1.4	Events	4
2.2	Compared Parameters	5
2.3	Aspect	6
2.4	Star Slots	9
2.4.1	Slot 3	9
2.4.2	Slot 4	10
2.4.3	Slot 5	11
2.4.4	Slot 6	12
2.4.5	Slot 7	13
2.5	FID Slots	14
2.5.1	Slot 0	14
2.5.2	Slot 1	15
2.5.3	Slot 2	16
A	Summary	17
A.1	Status	17
A.2	Comments	17

1 Front

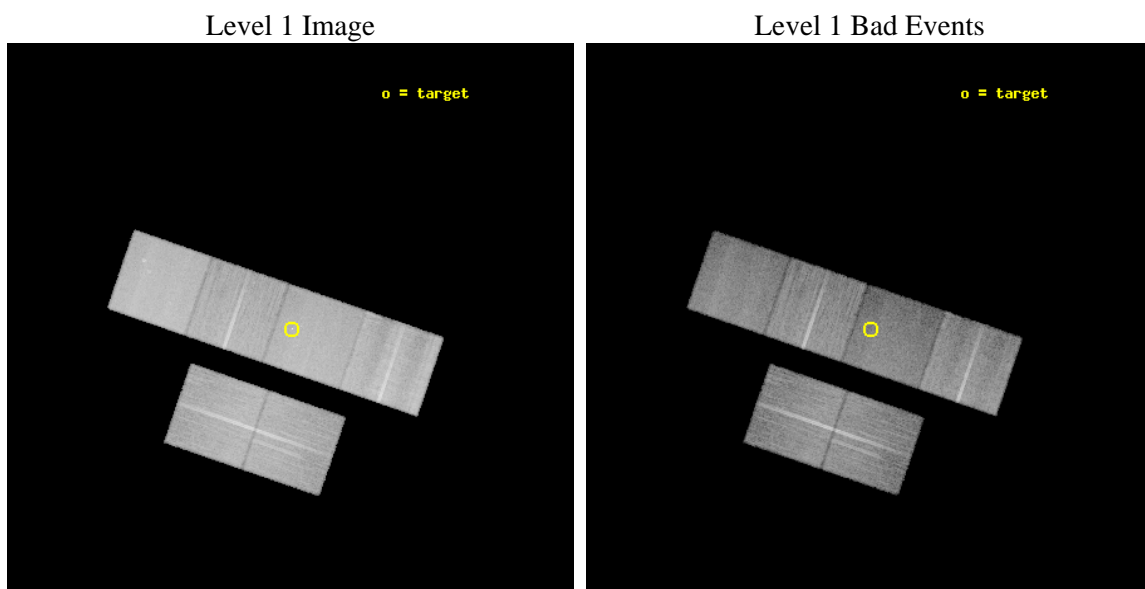
seq_num	702087	Sequence number
obs_id	11501	Observation id
title	The nature of active nuclei in radio galaxies: observations of the 2Jy sample	Proposal title
observer	Dr Martin Hardcastle	Principal investigator
object	PKS 0806-10	Source name
dtcycle	0	
cycle	P	events from which exps? Prim/Second/Both
ra_targ	122.223333	Observer's specified target RA [deg]
dec_targ	-10.461167	Observer's specified target Dec [deg]
ra_nom	122.22647089766	Nominal RA [deg]
dec_nom	-10.45739686041	Nominal Dec [deg]
roll_nom	18.980793231362	Nominal Roll [deg]
revision	2	Processing version of data
ontime	20038.39773953	Sum of GTIs [s]
livetime	19784.659481677	Livetime [s]
ontime2	20031.917884171	Sum of GTIs [s]
ontime3	20038.27461952	Sum of GTIs [s]
ontime5	20038.356699526	Sum of GTIs [s]
ontime6	20038.315659523	Sum of GTIs [s]
ontime7	20038.39773953	Sum of GTIs [s]
ontime8	20038.233579516	Sum of GTIs [s]
l2events	266206	Number of level 2 events



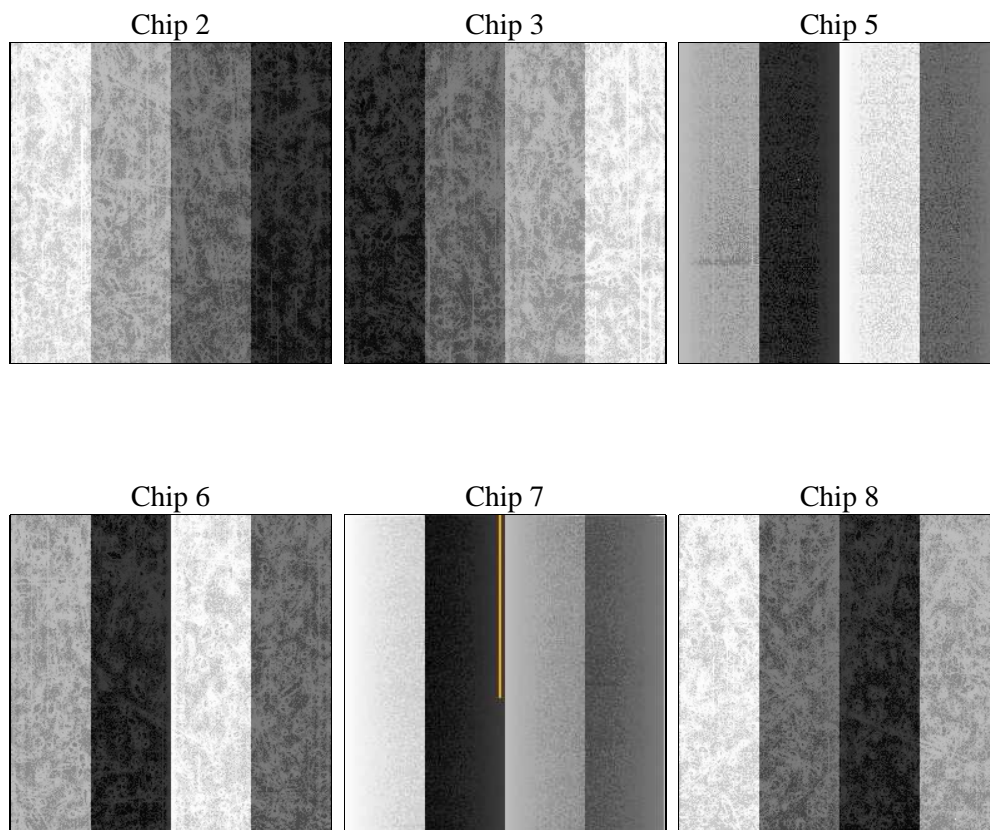
2 OBI

2.1 OBI

2.1.1 Images



2.1.2 Bias



2.1.3 Parameters

obi_num	0	Obi number	sched_exp_time	20000.000000	[s] Scheduled observation exposure time
ascdsver	8.4.5	Processing system revision	ontime	20038.39773953	Sum of GTIs [s]
caldsver	4.4.10	 	ontime2	20031.917884171	Sum of GTIs [s]
date	2012-06-19T08:11:50	Date and time of file creation	ontime3	20038.27461952	Sum of GTIs [s]
revision	2	Processing version of data	ontime5	20038.356699526	Sum of GTIs [s]
			ontime6	20038.315659523	Sum of GTIs [s]
			ontime7	20038.39773953	Sum of GTIs [s]
			ontime8	20038.233579516	Sum of GTIs [s]
			l1events	1192539	Number of level 1 events

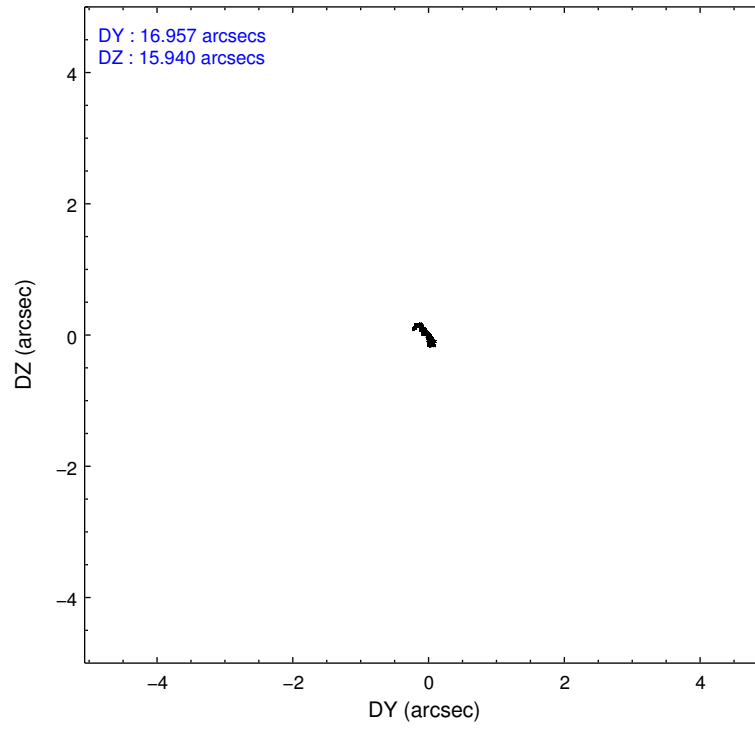
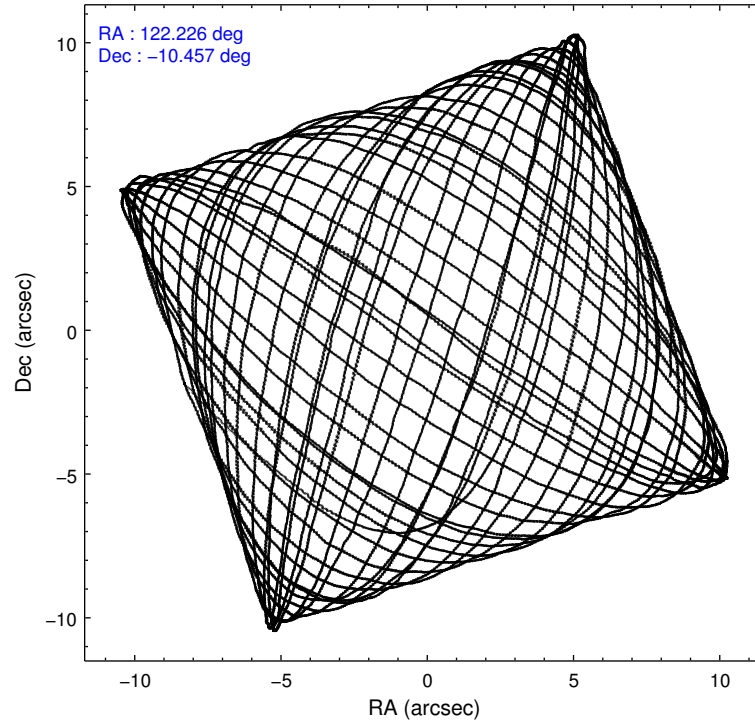
2.1.4 Events

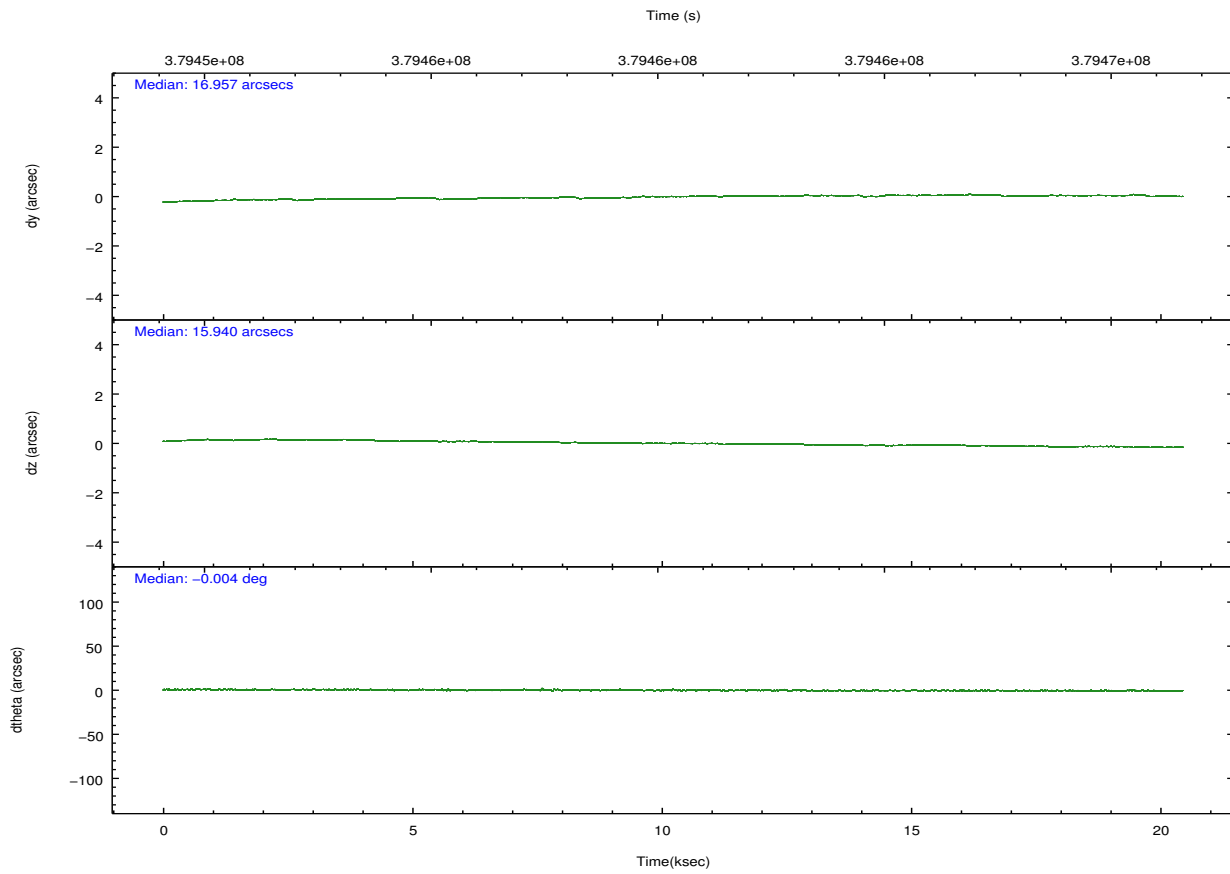
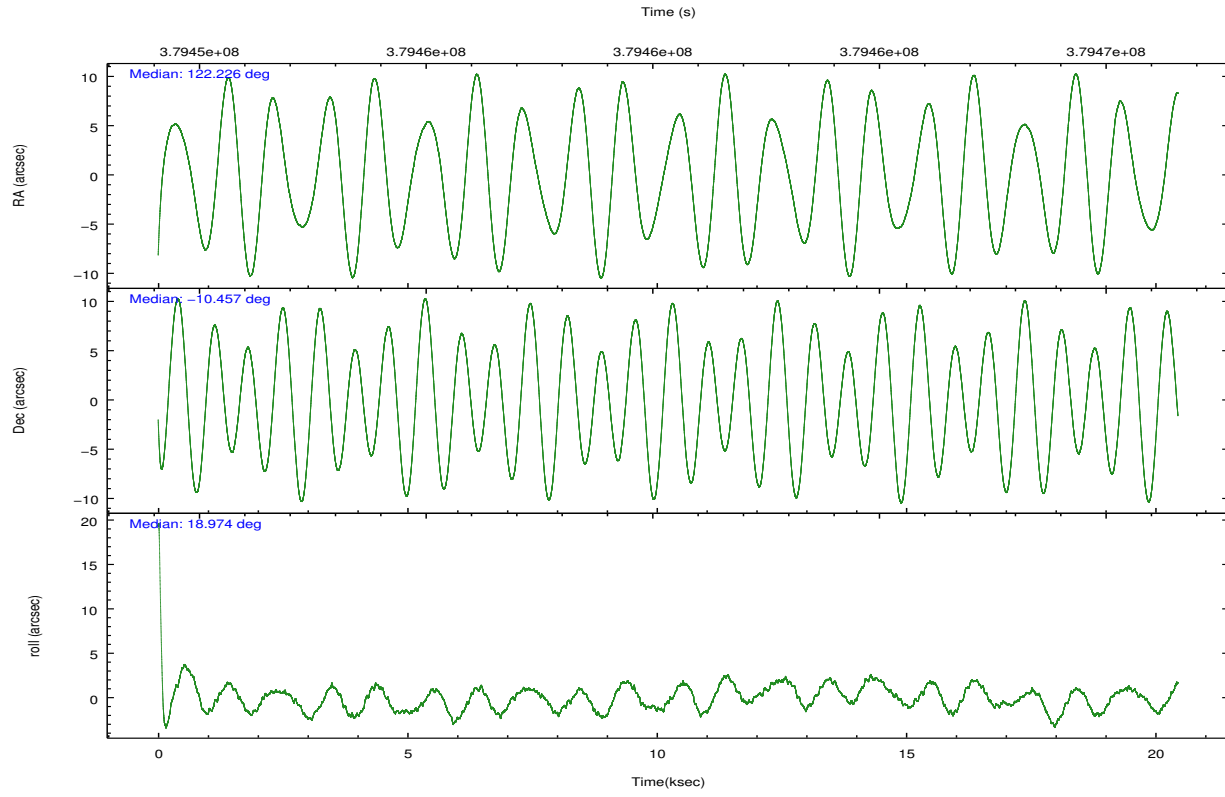
	ccd 2	ccd 3	ccd 5	ccd 6	ccd 7	ccd 8		ccd 2	ccd 3	ccd 5	ccd 6	ccd 7	ccd 8
level 1 events	185766	166009	242690	176672	198809	222593	grade 0 events	6291	5782	8514	6429	8314	15560
rejected events	168109	149769	123502	158284	107705	166160		3%	3%	3%	3%	4%	6%
rejected %	90%	90%	50%	89%	54%	74%	grade 1 events	124	108	476	88	265	186
								0%	0%	0%	0%	0%	0%
							grade 2 events	4222	3505	36455	4088	18796	13572
								2%	2%	15%	2%	9%	6%
							grade 3 events	1837	1816	5010	1960	8166	6195
								0%	1%	2%	1%	4%	2%
							grade 4 events	1895	1807	4800	1935	8101	5580
								1%	1%	1%	1%	4%	2%
							grade 5 events	6372	7056	19508	7230	20485	10782
								3%	4%	8%	4%	10%	4%
							grade 6 events	3415	3333	64428	3978	47741	15531
								1%	2%	26%	2%	24%	6%
							grade 7 events	161610	142602	103499	150964	86941	155187
								86%	85%	42%	85%	43%	69%

2.2 Compared Parameters

Parameter	Planned	Actual	Parameter	Planned	Actual
Instrument	ACIS	ACIS	Obspar format version number	7	7
Detector	ACIS-235678	ACIS-235678	Obspar file type	PREDICTED	ACTUAL
Grating	NONE	NONE	Obspar update status	NONE	UPDATED
Data mode	VFAINT	VFAINT	CCD I0 on	N	N
Observation mode	POINTING	POINTING	CCD I1 on	N	N
[deg] Pointing RA	122.208498	122.2264708976555	CCD I2 on	O1	Y
[deg] Pointing Dec	-10.478288	-10.45739686041028	CCD I3 on	O2	Y
[deg] Pointing Roll	18.820882	18.9807932313624	CCD S0 on	N	N
[mm] SIM focus pos	-0.684267	-0.6828225247311905	CCD S1 on	O3	Y
[mm] SIM defocus	0	0.001444936568705701	CCD S2 on	Y	Y
[mm] SIM translation stage pos	-190.132523	-190.1400660498719	CCD S3 on	Y	Y
[mm] SIM translation stage offset	0	0.00754346686406393	CCD S4 on	Y	Y
[s] Observation start time (MET)	379450553.184000	379449267.71253	CCD S5 on	N	N
Observation start date	2010-01-09T18:54:47	2010-01-09T18:34:27	Number of optional ACIS chips dropped	0	0
[s] Observation end time (MET)	379470553.184000	379471471.77615	On-chip summing requested	N	N
Observation end date	2010-01-10T00:28:07	2010-01-10T00:44:31	Subarray requested	NONE	NONE
Read mode	TIMED	TIMED	Alternating exposures requested	N	N
			[s] Primary exposure time	0.000000	3.2

2.3 Aspect



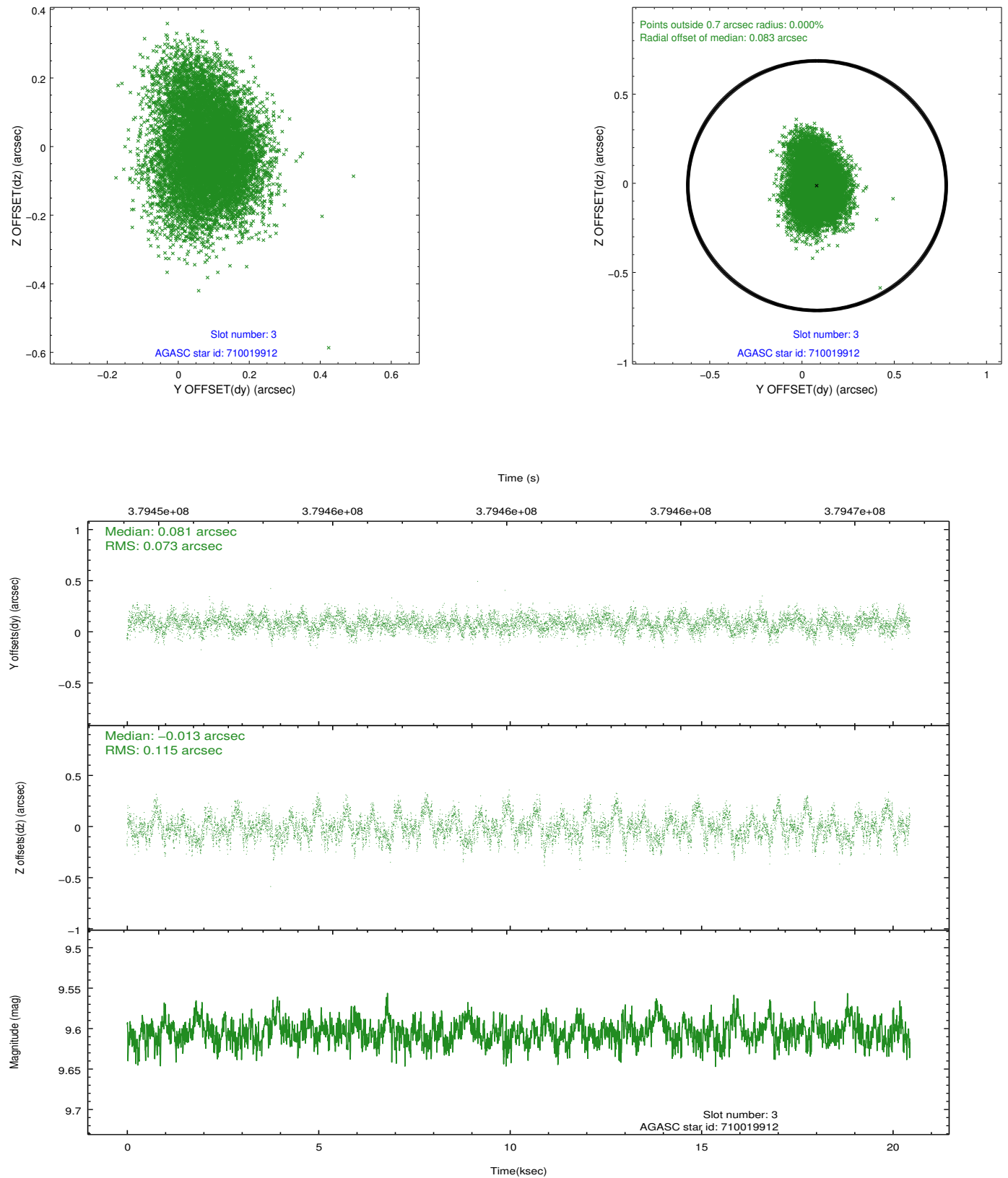


Slot Statistics

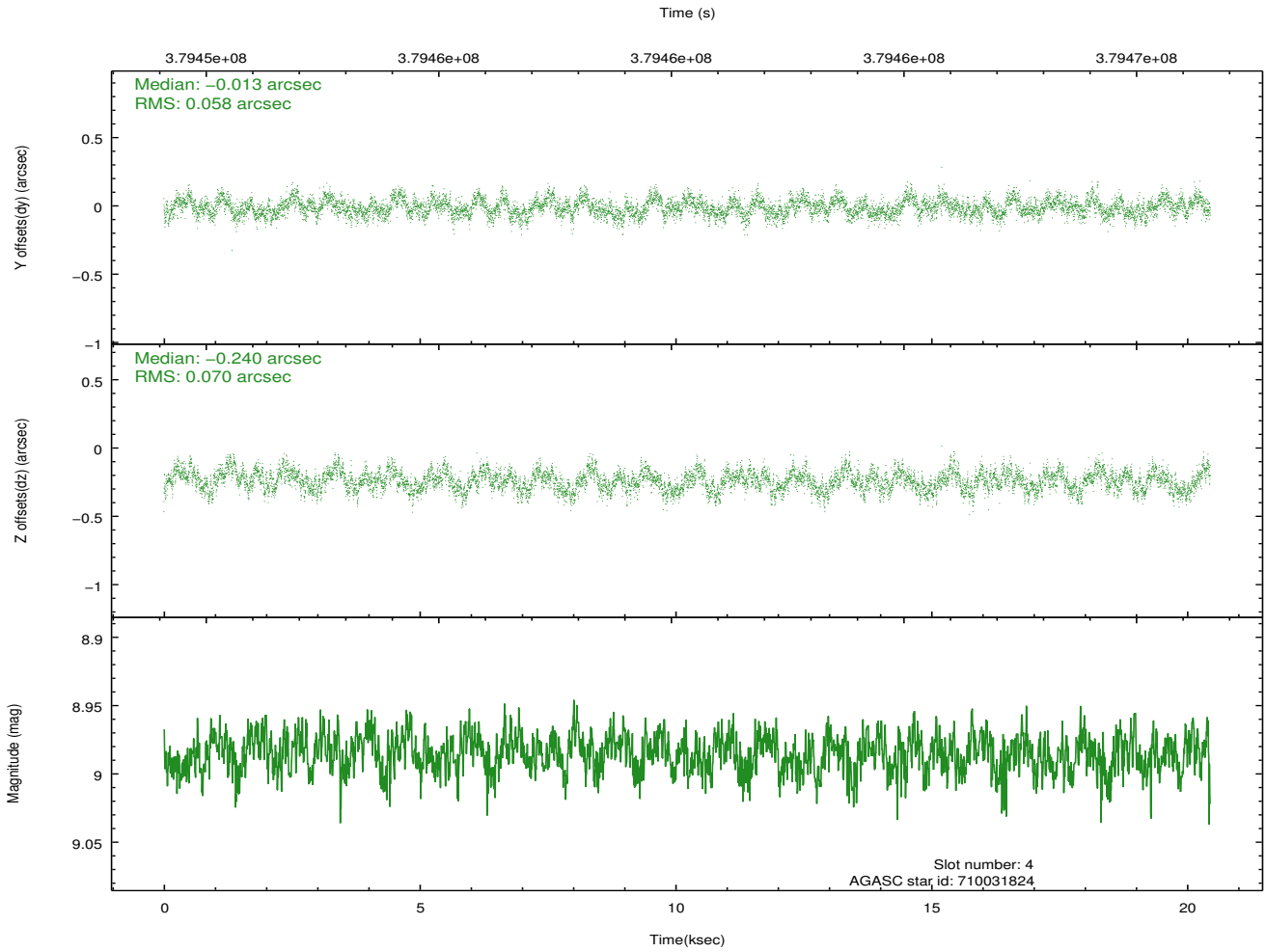
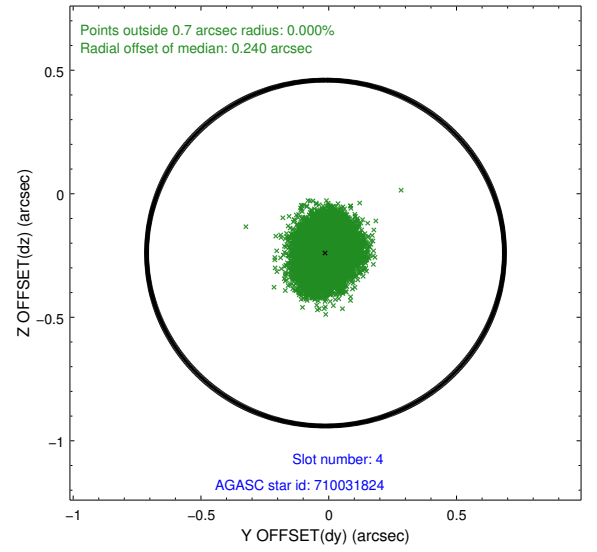
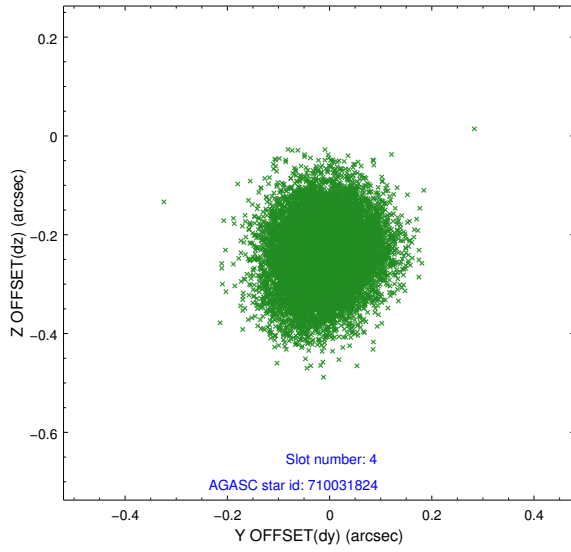
slot	status	id	mag	n_pts	med_dy	med_dz	dr1	dr2	ra	dec	mean_y	mean_z
0	FID	ACIS-S-2	6.99	4987	-0.087	-0.015	0.008	0.014	0.000000	0.000000	-770.02	-1737.37
1	FID	ACIS-S-4	7.07	4988	0.186	0.046	0.007	0.014	0.000000	0.000000	2143.43	171.01
2	FID	ACIS-S-5	7.10	4987	-0.130	-0.022	0.008	0.014	0.000000	0.000000	-1822.69	164.79
3	GUIDE	710019912	9.60	9958	0.081	-0.013	0.144	0.241	122.543604	-10.778522	773.43	-1405.83
4	GUIDE	710031824	8.99	9970	-0.013	-0.240	0.099	0.154	122.055683	-10.103776	-77.51	1450.44
5	GUIDE	710034096	9.35	9966	0.165	0.168	0.109	0.171	121.693874	-10.762651	-2052.96	-383.09
6	GUIDE	710038160	9.81	9945	-0.074	-0.068	0.107	0.177	121.929980	-10.396711	-838.91	595.59
7	GUIDE	711745288	8.56	9967	-0.159	0.147	0.083	0.131	122.934237	-10.733885	2132.23	-1701.42

2.4 Star Slots

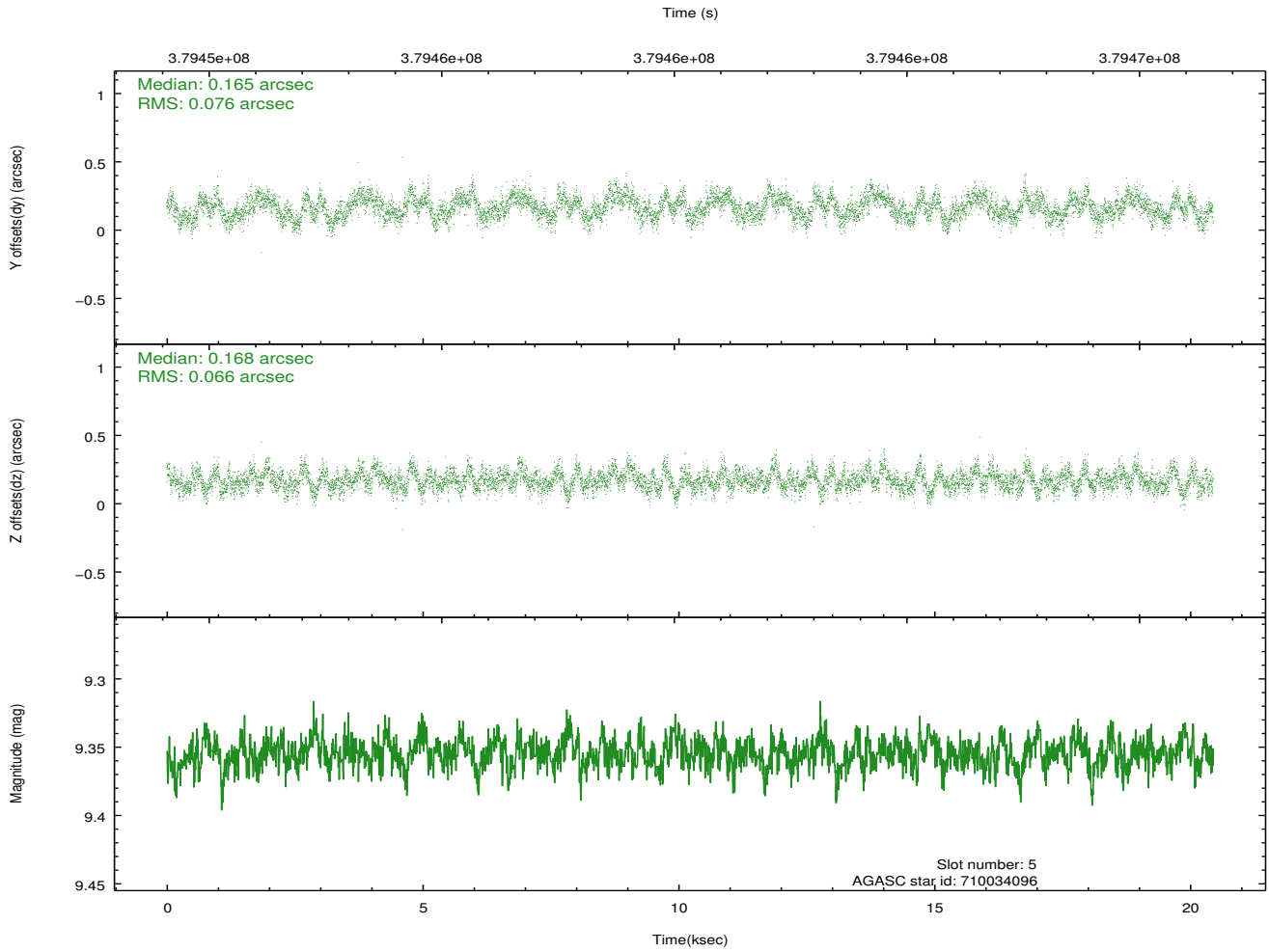
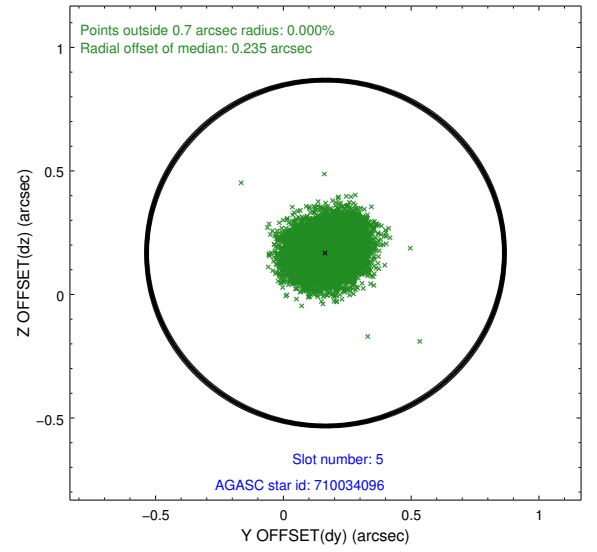
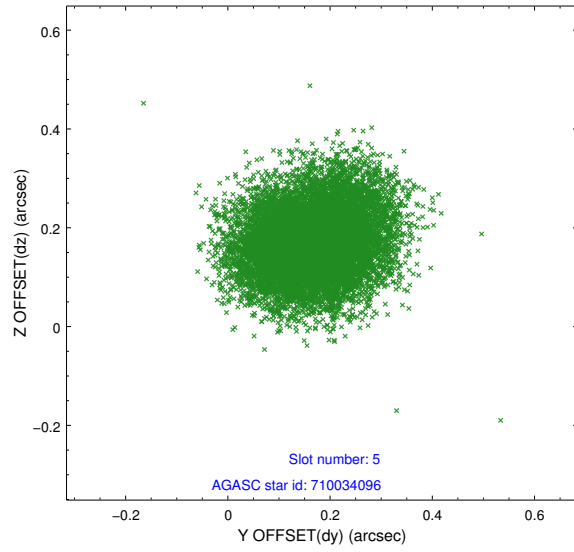
2.4.1 Slot 3



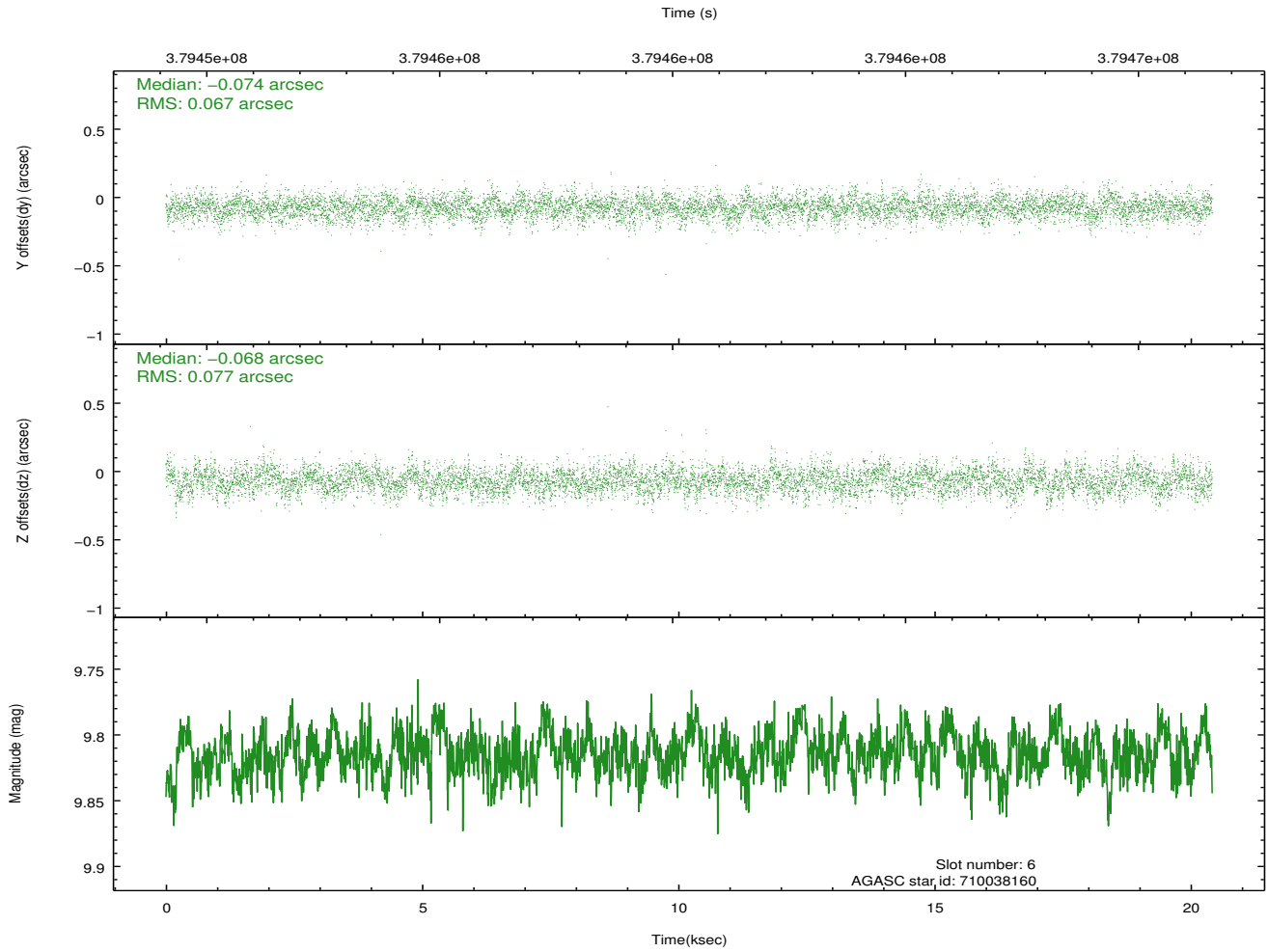
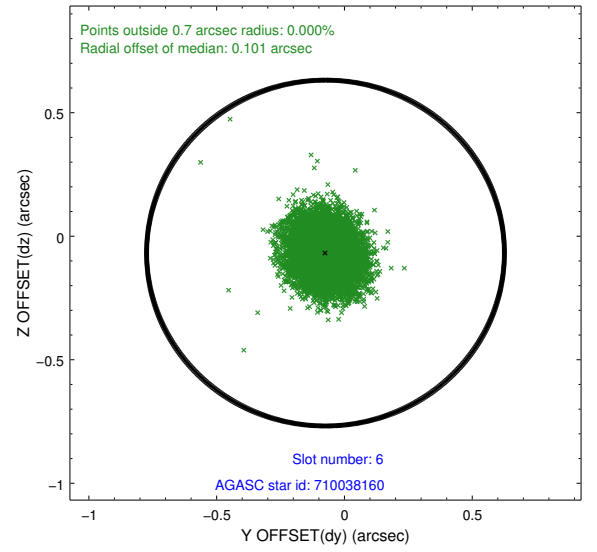
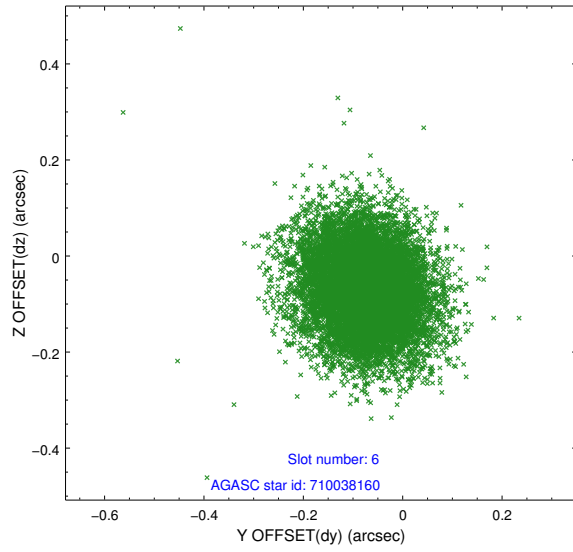
2.4.2 Slot 4



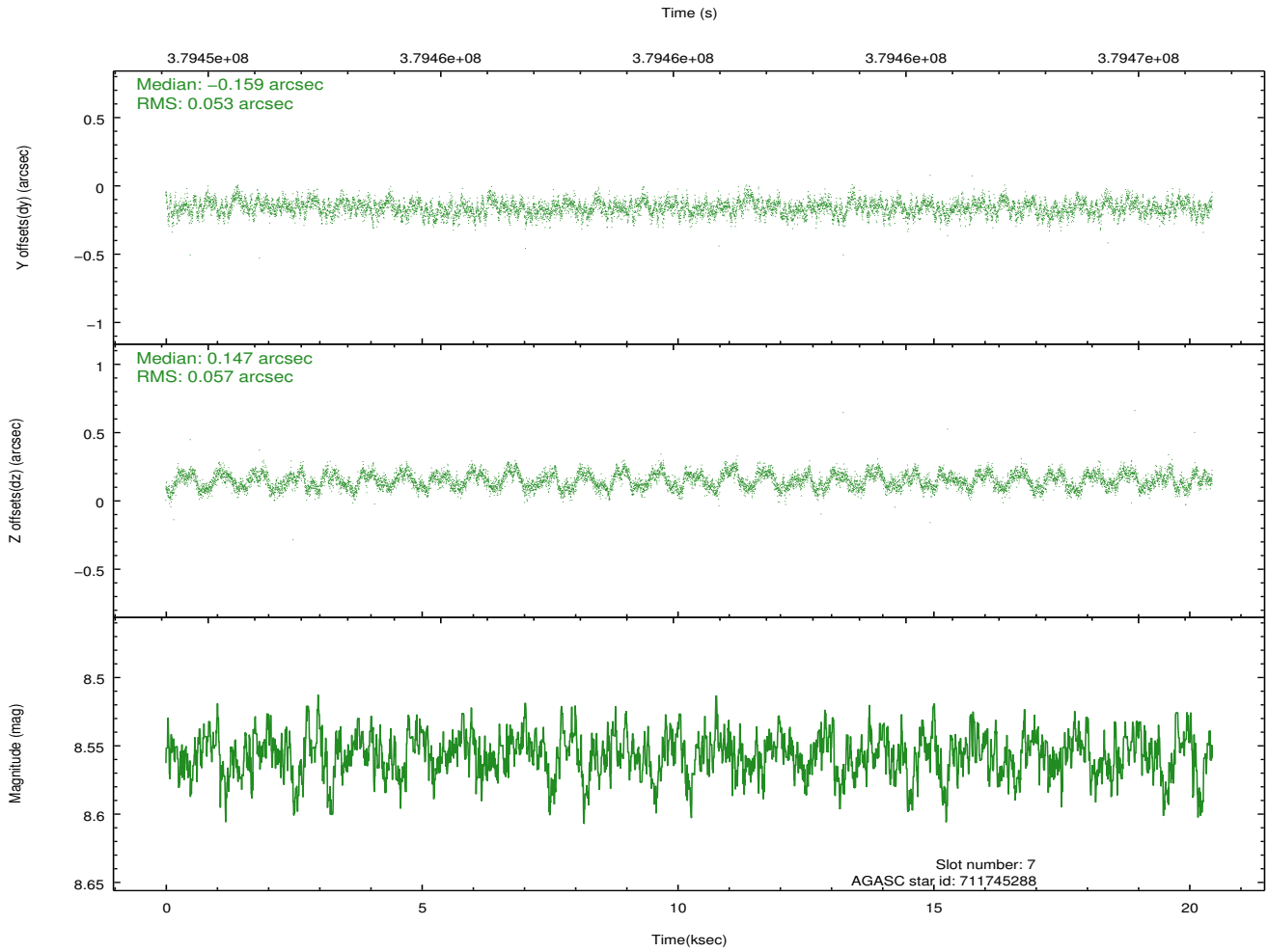
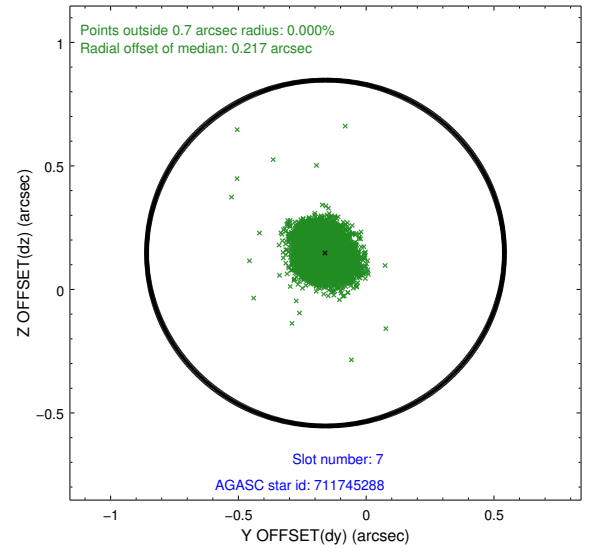
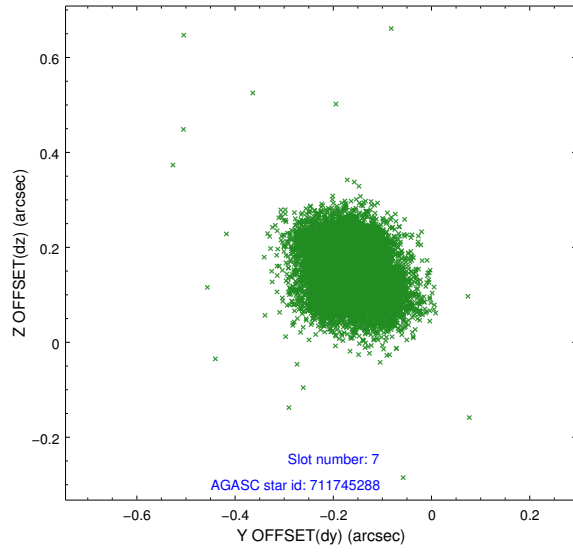
2.4.3 Slot 5



2.4.4 Slot 6

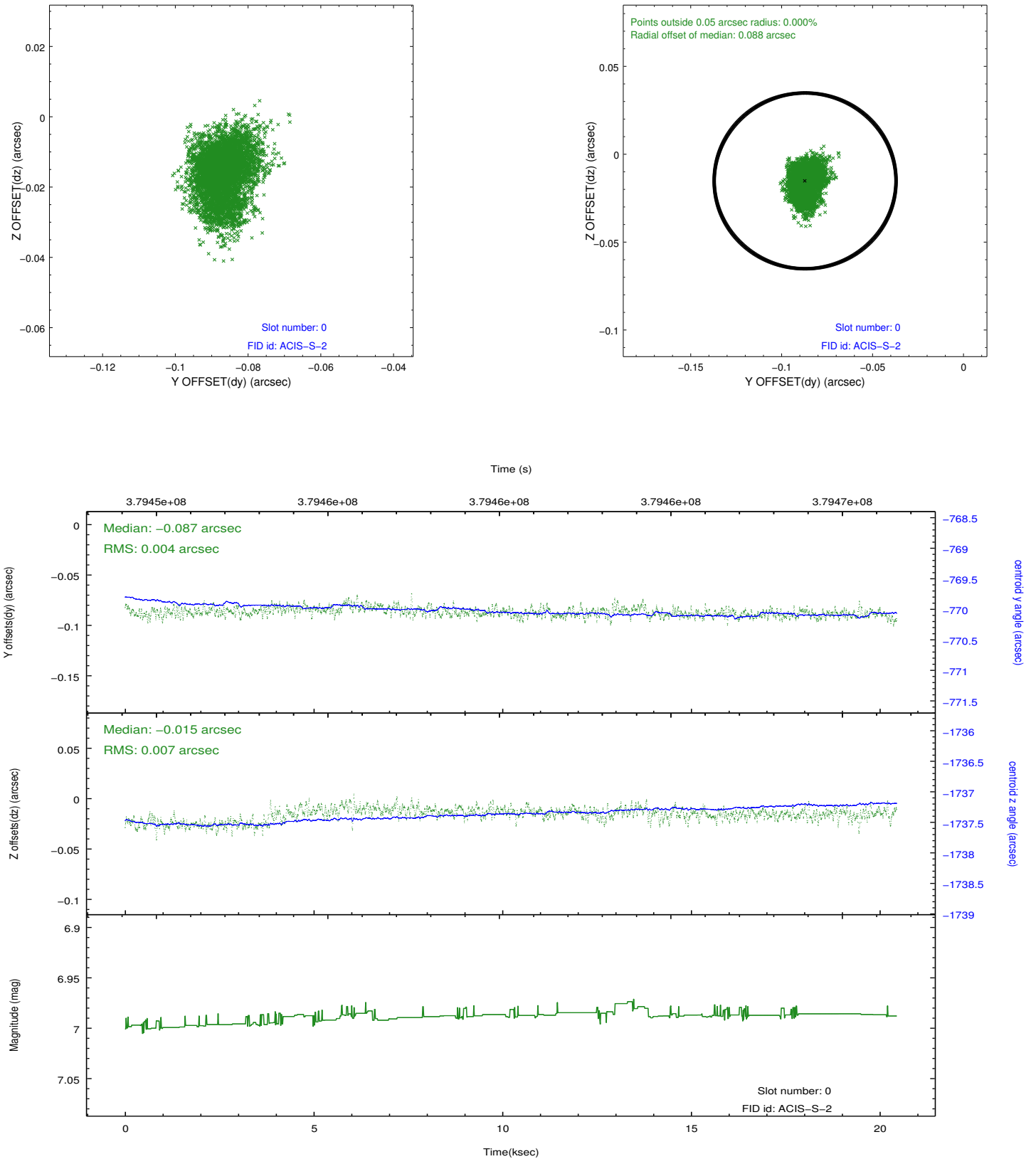


2.4.5 Slot 7

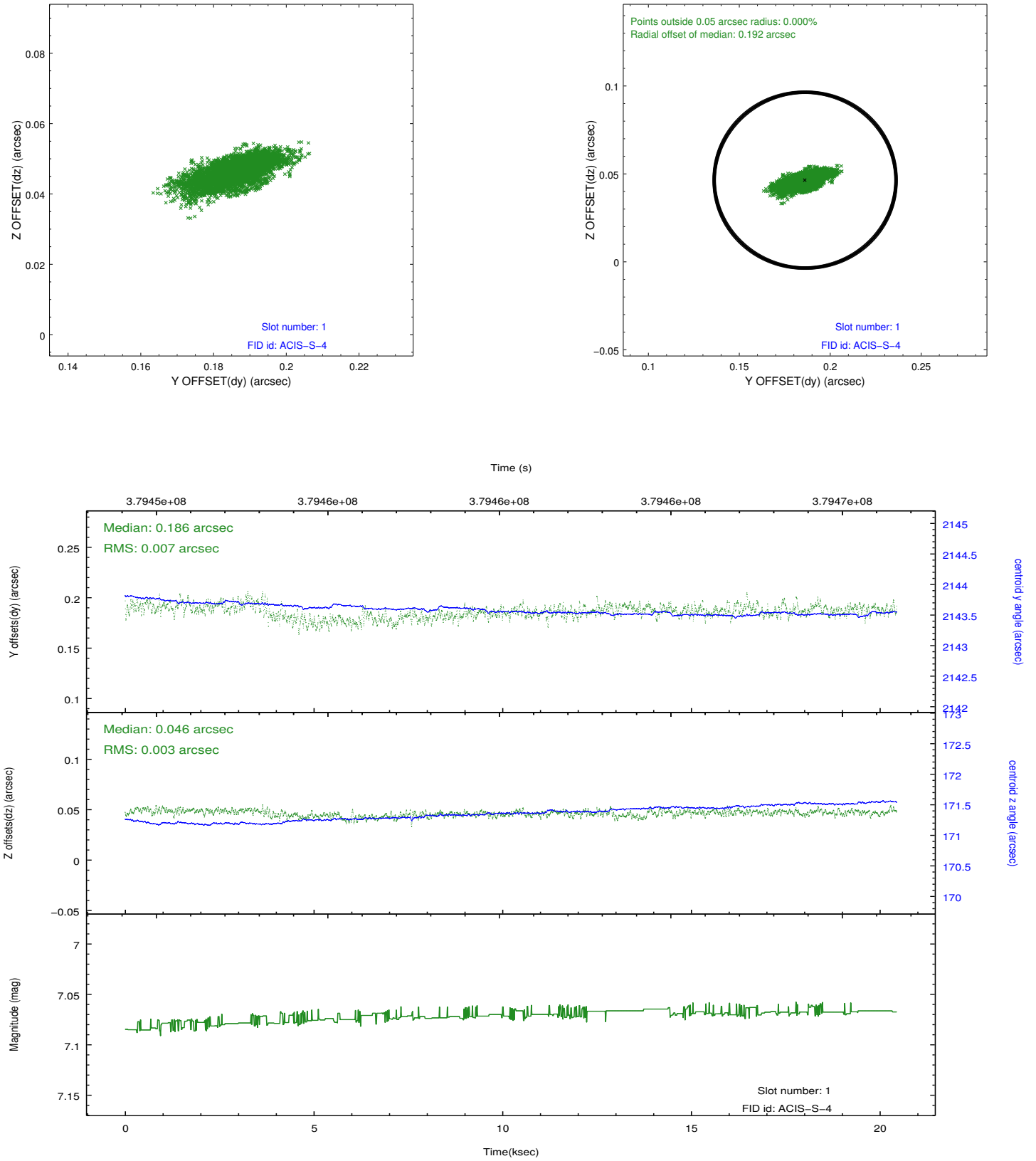


2.5 FID Slots

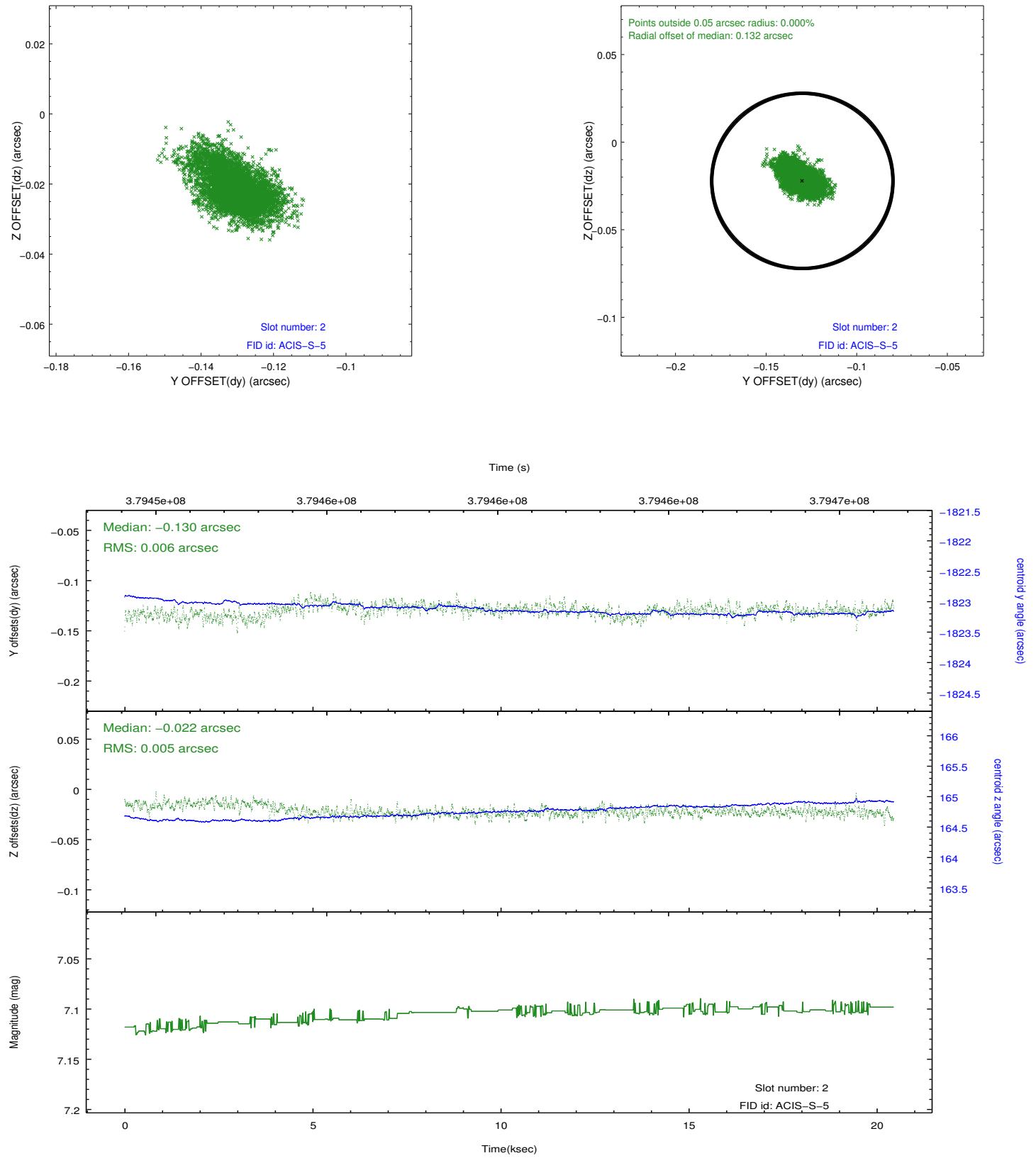
2.5.1 Slot 0



2.5.2 Slot 1



2.5.3 Slot 2



A Summary

A.1 Status

V&V Scientist	Jen Lauer
V&V Date (YYYY-MM-DD)	2012.06.25
V&V Edition	1
V&V Disposition and Status	OK
V&V Charge Time	20.038397762895

A.2 Comments