

V&V Reference Report

L2 ASCDS Version : 8.4.5

Observation 11490 - L2 Version 2
Chandra X-Ray Center

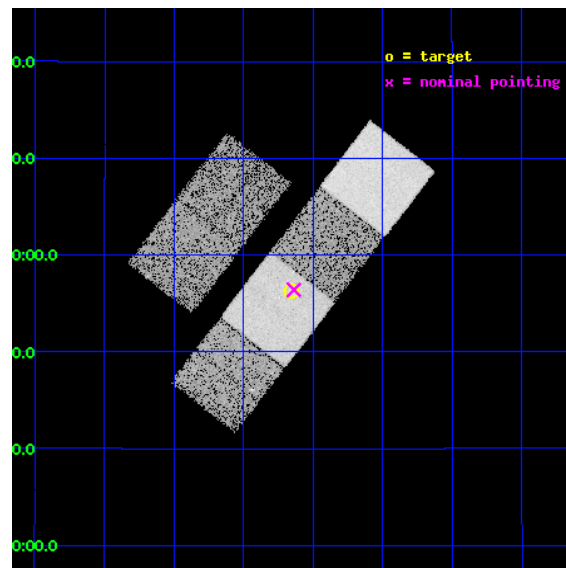
L2 Processing Date : Jun 11 2012

Contents

1	Front	2
2	OBI	3
2.1	OBI	3
2.1.1	Images	3
2.1.2	Bias	3
2.1.3	Parameters	4
2.1.4	Events	4
2.2	Compared Parameters	5
2.3	Aspect	6
2.4	Star Slots	9
2.4.1	Slot 3	9
2.4.2	Slot 4	10
2.4.3	Slot 5	11
2.4.4	Slot 6	12
2.4.5	Slot 7	13
2.5	FID Slots	14
2.5.1	Slot 0	14
2.5.2	Slot 1	15
2.5.3	Slot 2	16
A	Summary	17
A.1	Status	17
A.2	Comments	17

1 Front

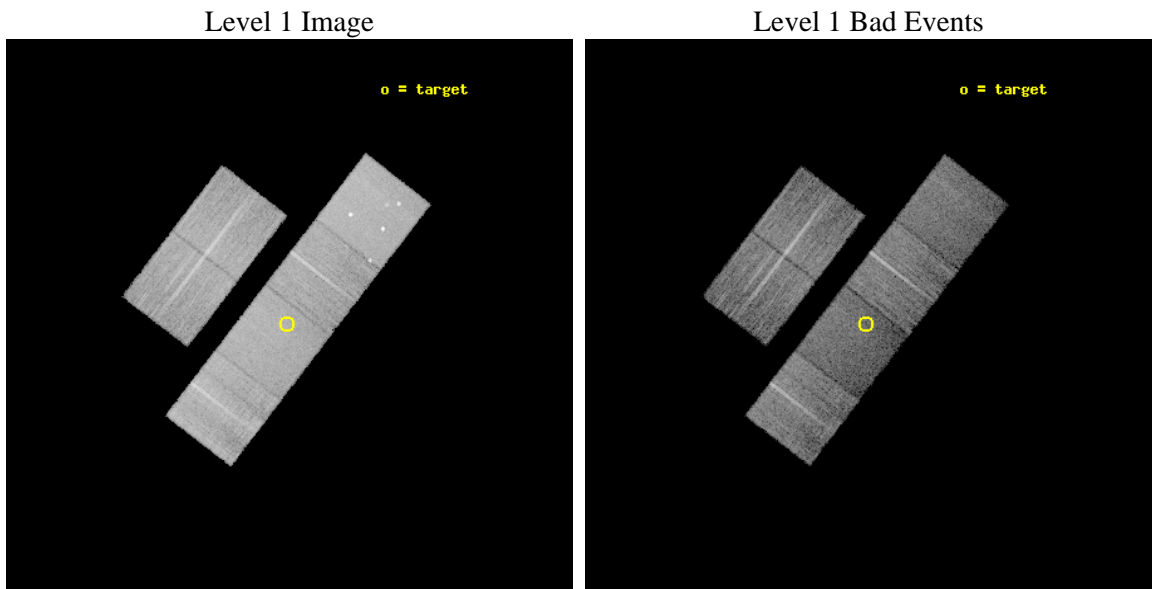
seq_num	702076	Sequence number
obs_id	11490	Observation id
title	Hunting for Intrinsically X-ray Weak Quasars: The Case of PHL 1811 Analogs	Proposal title
observer	Prof. William Brandt	Principal investigator
object	SDSS J0000+1356	Source name
dtcycle	0	
cycle	P	events from which exps? Prim/Second/Both
ra_targ	0.039167	Observer's specified target RA [deg]
dec_targ	13.938444	Observer's specified target Dec [deg]
ra_nom	0.034499599949982	Nominal RA [deg]
dec_nom	13.940122649727	Nominal Dec [deg]
roll_nom	127.62615279207	Nominal Roll [deg]
revision	2	Processing version of data
ontime	9638.3999641538	Sum of GTIs [s]
livetime	9516.35274026	Livetime [s]
ontime2	9635.1589438319	Sum of GTIs [s]
ontime3	9635.1589339375	Sum of GTIs [s]
ontime5	9638.3999641538	Sum of GTIs [s]
ontime6	9638.3999641538	Sum of GTIs [s]
ontime7	9638.3999641538	Sum of GTIs [s]
ontime8	9638.3999641538	Sum of GTIs [s]
l2events	129172	Number of level 2 events



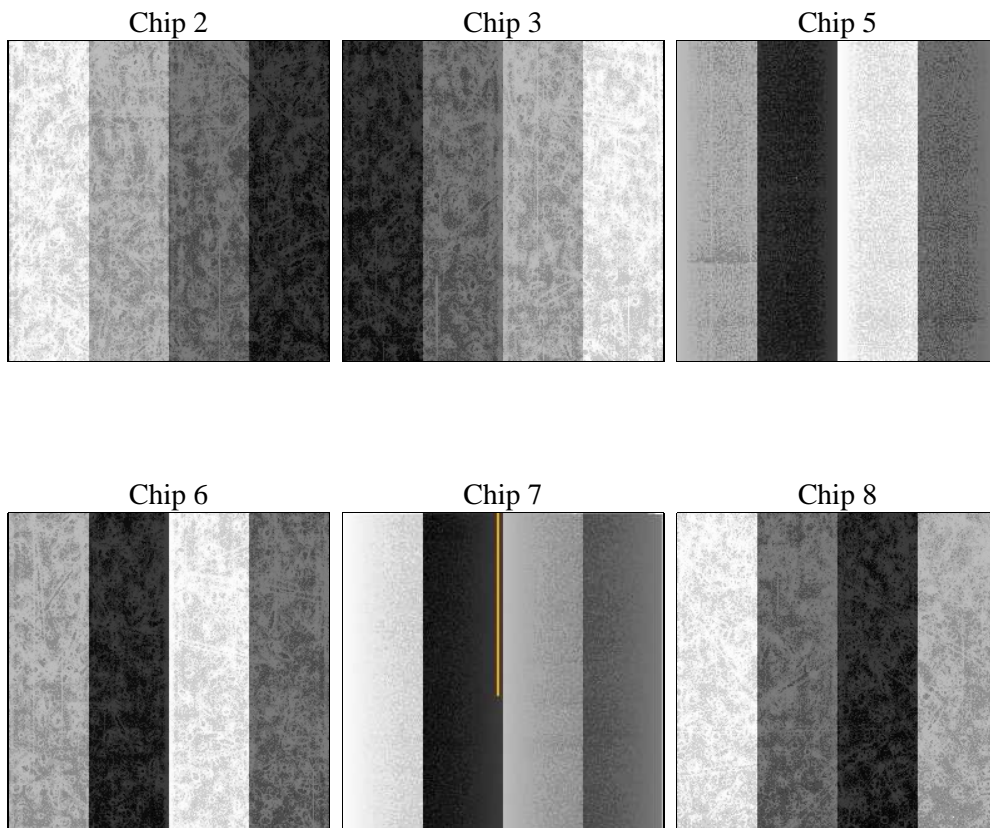
2 OBI

2.1 OBI

2.1.1 Images



2.1.2 Bias



2.1.3 Parameters

obi_num	0	Obi number	sched_exp_time	9600.000000	[s] Scheduled observation exposure time
ascdsver	8.4.5	Processing system revision	ontime	9638.3999641538	Sum of GTIs [s]
caldsver	4.4.10	 	ontime2	9635.1589438319	Sum of GTIs [s]
date	2012-06-12T01:27:40	Date and time of file creation	ontime3	9635.1589339375	Sum of GTIs [s]
revision	2	Processing version of data	ontime5	9638.3999641538	Sum of GTIs [s]
			ontime6	9638.3999641538	Sum of GTIs [s]
			ontime7	9638.3999641538	Sum of GTIs [s]
			ontime8	9638.3999641538	Sum of GTIs [s]
			l1events	588631	Number of level 1 events

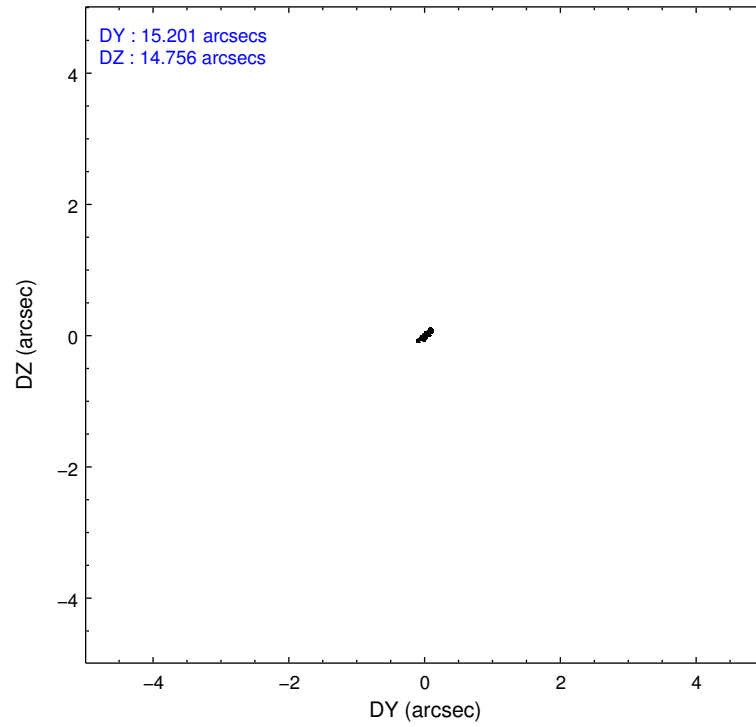
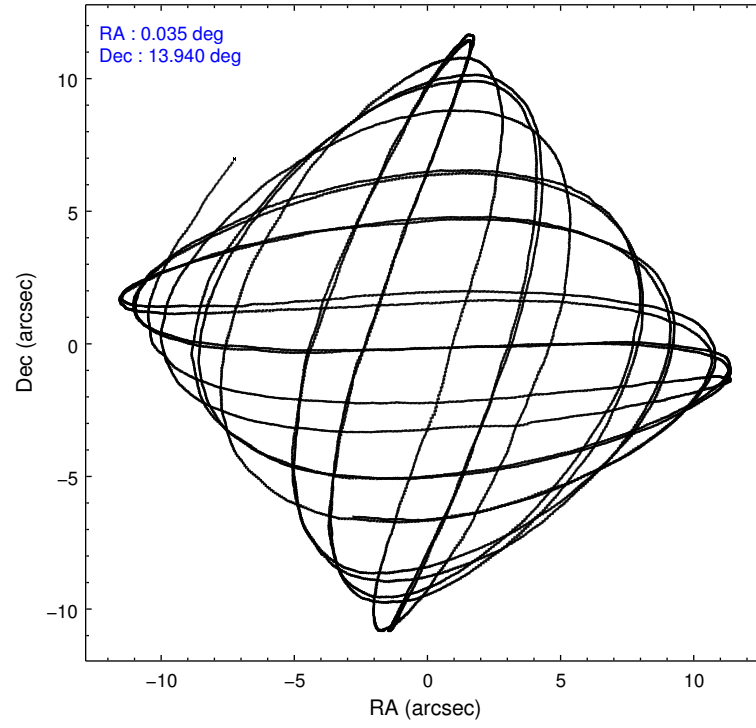
2.1.4 Events

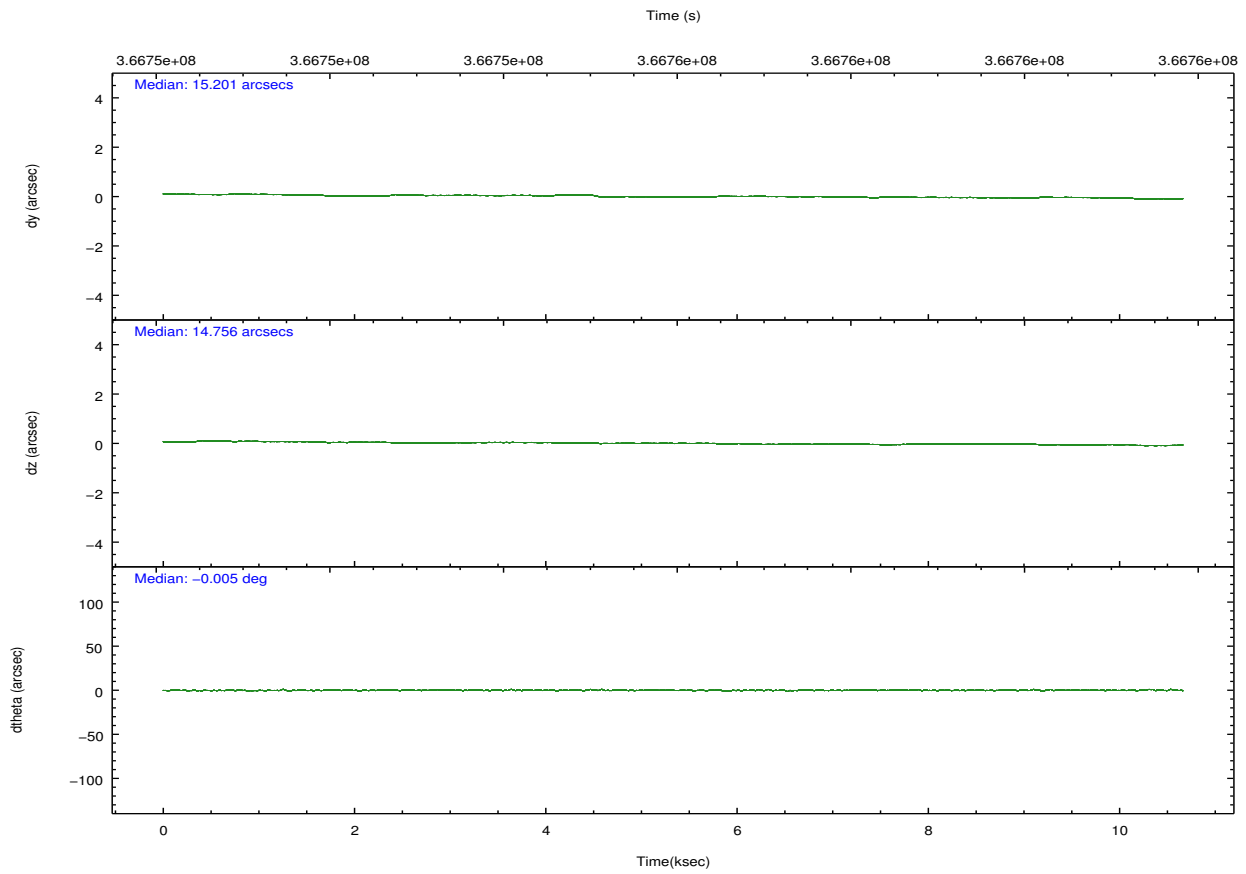
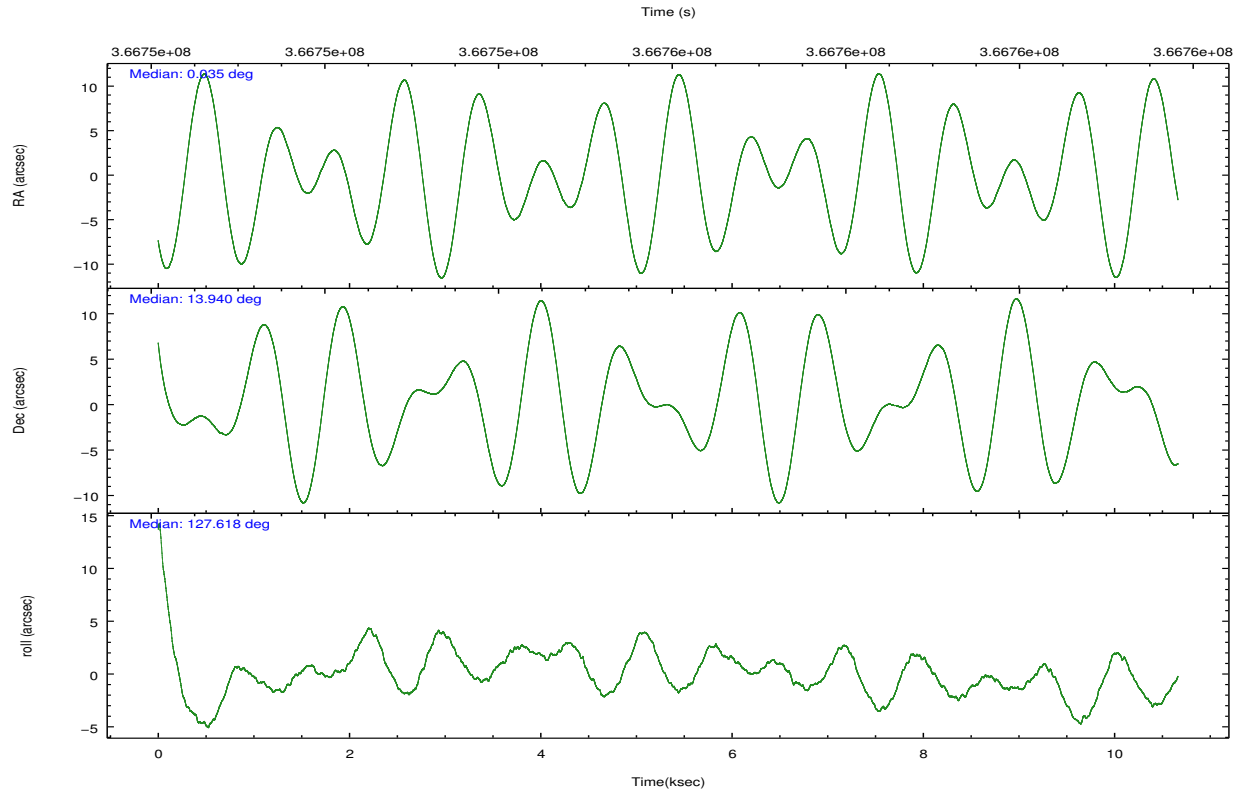
	ccd 2	ccd 3	ccd 5	ccd 6	ccd 7	ccd 8		ccd 2	ccd 3	ccd 5	ccd 6	ccd 7	ccd 8
level 1 events	90637	83471	123213	86029	96986	108295	grade 0 events	2779	2907	9498	3105	3990	7769
rejected events	82408	75417	60162	77119	52952	81670		3%	3%	7%	3%	4%	7%
rejected %	90%	90%	48%	89%	54%	75%	grade 1 events	54	51	288	54	138	92
								0%	0%	0%	0%	0%	0%
							grade 2 events	2025	1671	17859	1967	9004	6197
								2%	2%	14%	2%	9%	5%
							grade 3 events	874	884	2335	928	3895	2806
								0%	1%	1%	1%	4%	2%
							grade 4 events	924	957	2272	938	3766	2636
								1%	1%	1%	1%	3%	2%
							grade 5 events	2931	3394	9018	3516	9917	5077
								3%	4%	7%	4%	10%	4%
							grade 6 events	1637	1640	31132	1980	23407	7234
								1%	1%	25%	2%	24%	6%
							grade 7 events	79413	71967	50811	73541	42869	76484
								87%	86%	41%	85%	44%	70%

2.2 Compared Parameters

Parameter	Planned	Actual	Parameter	Planned	Actual
Instrument	ACIS	ACIS	Obspar format version number	7	7
Detector	ACIS-235678	ACIS-235678	Obspar file type	PREDICTED	ACTUAL
Grating	NONE	NONE	Obspar update status	NONE	UPDATED
Data mode	FAINT	FAINT	CCD I0 on	N	N
Observation mode	POINTING	POINTING	CCD I1 on	N	N
[deg] Pointing RA	0.060687	0.03449959994998153	CCD I2 on	O2	Y
[deg] Pointing Dec	13.930089	13.94012264972721	CCD I3 on	O1	Y
[deg] Pointing Roll	127.463219	127.6261527920695	CCD S0 on	N	N
[mm] SIM focus pos	-0.684267	-0.6828225247311905	CCD S1 on	Y	Y
[mm] SIM defocus	0	0.001444936568705701	CCD S2 on	Y	Y
[mm] SIM translation stage pos	-190.132523	-190.1400660498719	CCD S3 on	Y	Y
[mm] SIM translation stage offset	0	0.00754346686406393	CCD S4 on	Y	Y
[s] Observation start time (MET)	366751687.184000	366750239.1857	CCD S5 on	N	N
Observation start date	2009-08-15T19:27:01	2009-08-15T19:03:59	Number of optional ACIS chips dropped	0	0
[s] Observation end time (MET)	366761287.184000	366761756.59877	On-chip summing requested	N	N
Observation end date	2009-08-15T22:07:01	2009-08-15T22:15:56	Subarray requested	NONE	NONE
Read mode	TIMED	TIMED	Alternating exposures requested	N	N
			[s] Primary exposure time	0.000000	3.2

2.3 Aspect



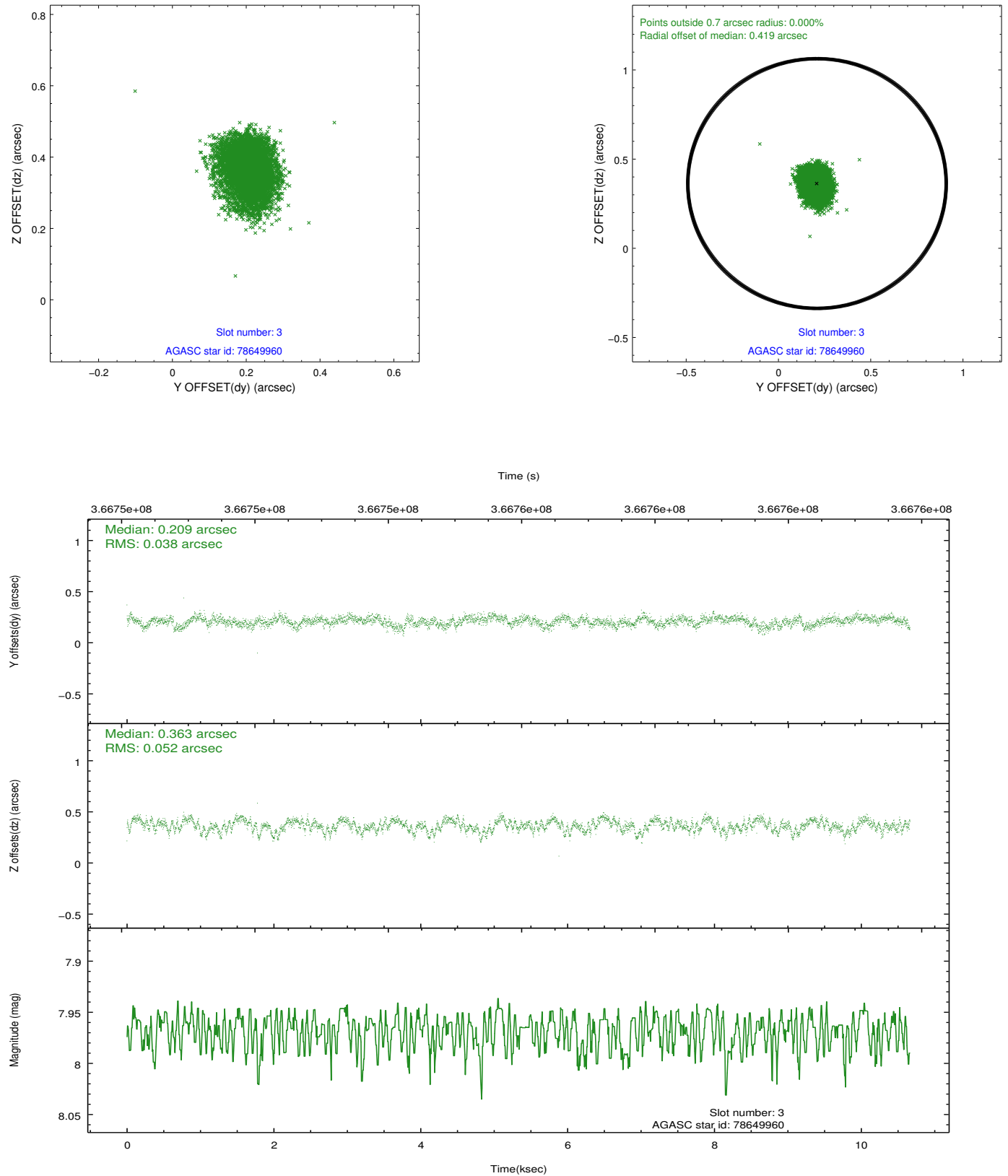


Slot Statistics

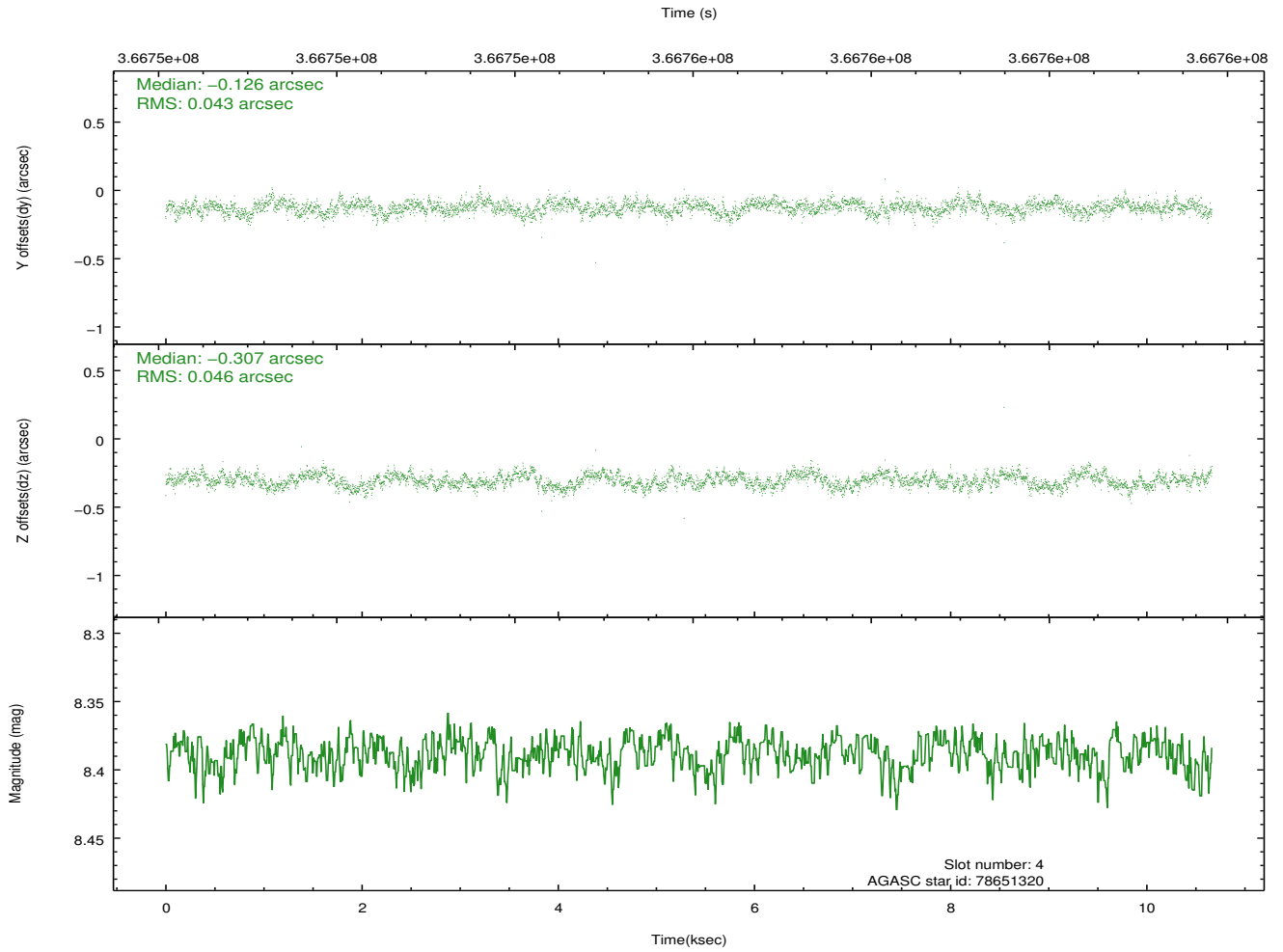
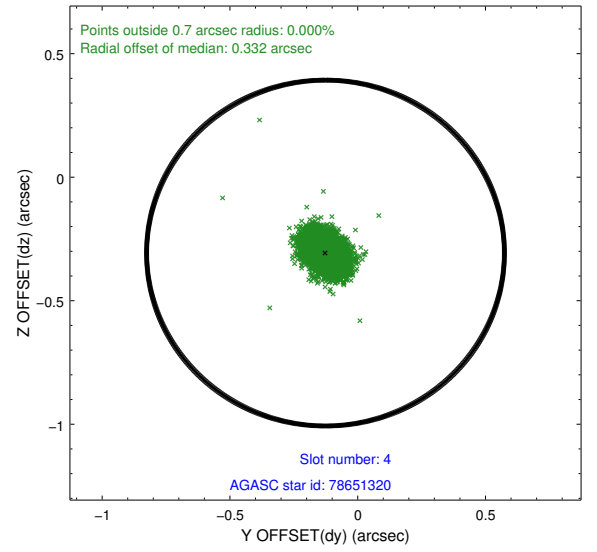
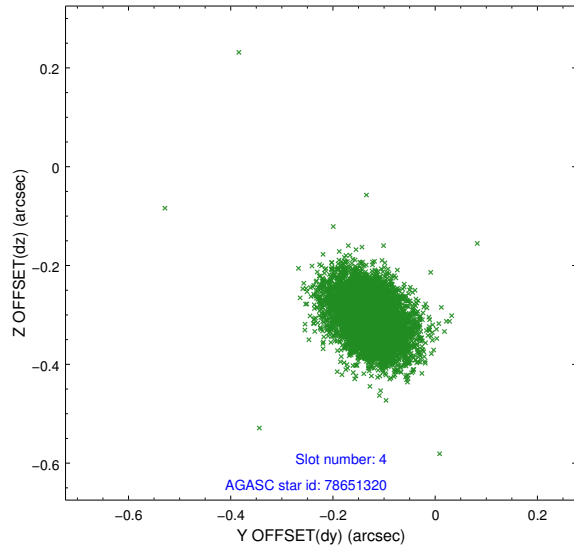
slot	status	id	mag	n_pts	med_dy	med_dz	dr1	dr2	ra	dec	mean_y	mean_z
0	FID	ACIS-S-2	6.92	2601	-0.097	-0.032	0.006	0.011	0.000000	0.000000	-768.26	-1736.17
1	FID	ACIS-S-4	7.01	2601	0.199	0.056	0.005	0.011	0.000000	0.000000	2145.07	171.92
2	FID	ACIS-S-5	7.04	2601	-0.133	-0.015	0.006	0.011	0.000000	0.000000	-1820.54	166.04
3	GUIDE	78649960	7.97	5203	0.209	0.363	0.069	0.111	0.677652	13.930677	-1306.74	-1713.83
4	GUIDE	78651320	8.39	5198	-0.126	-0.307	0.066	0.109	0.065955	13.461465	-1350.67	1010.80
5	GUIDE	78652416	7.76	5199	0.207	0.032	0.062	0.110	0.074555	13.312230	-1795.40	1314.04
6	GUIDE	78653112	9.76	5192	-0.228	0.159	0.158	0.293	0.064605	14.341109	1165.91	-910.17
7	GUIDE	154279224	8.42	5200	-0.065	-0.230	0.077	0.122	359.611393	13.822491	649.17	1481.19

2.4 Star Slots

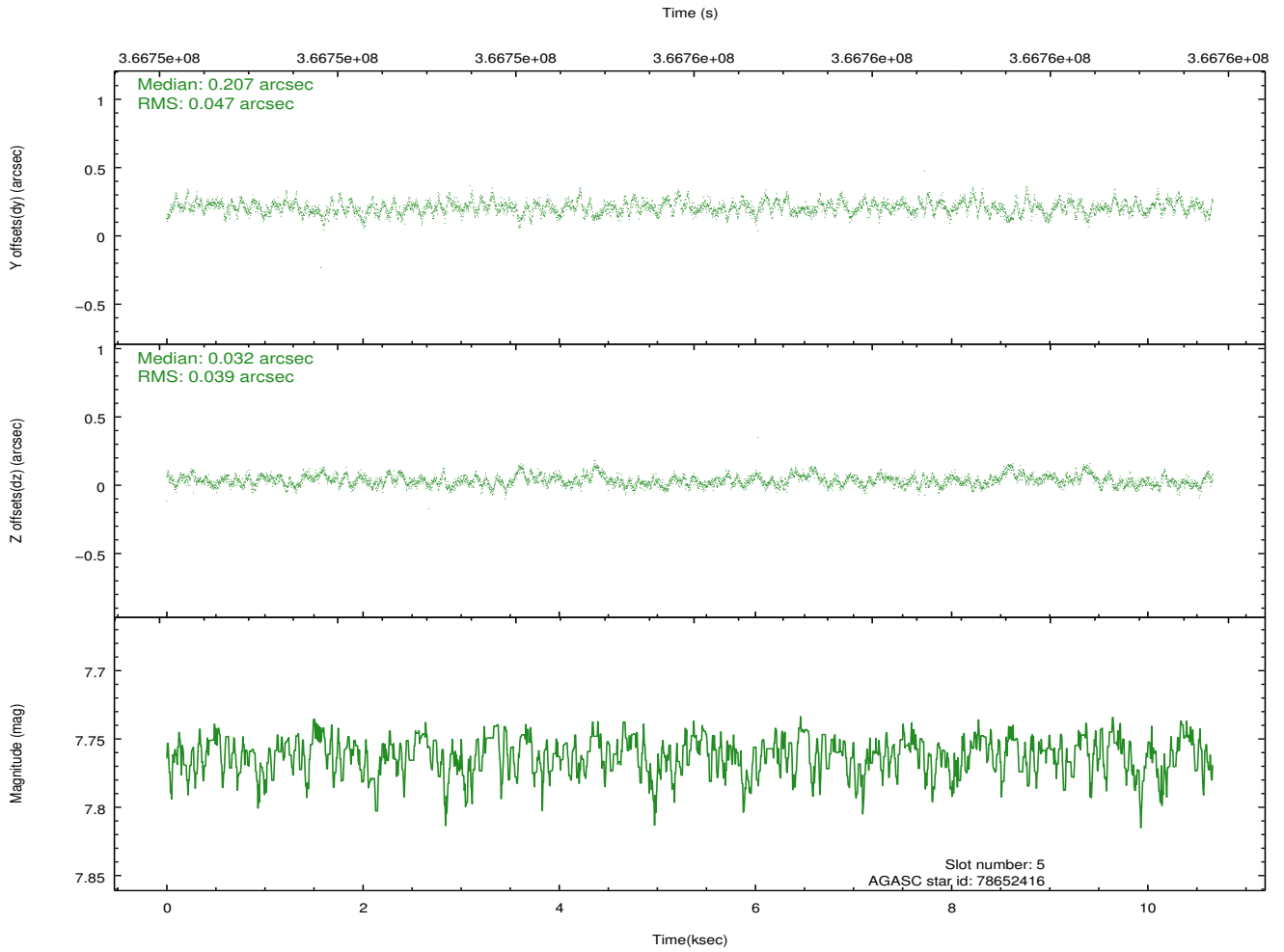
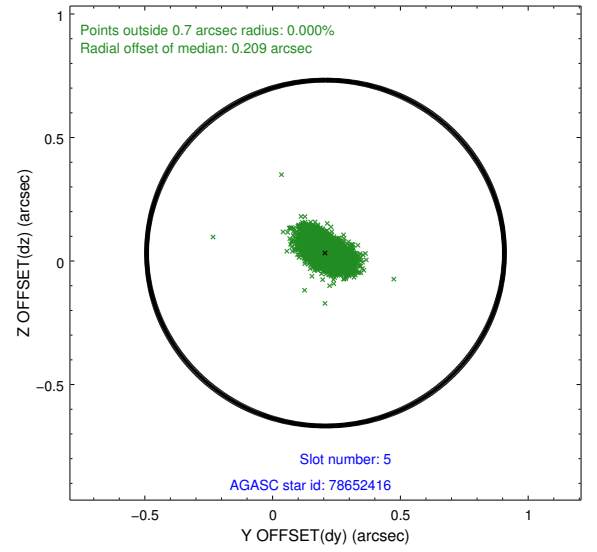
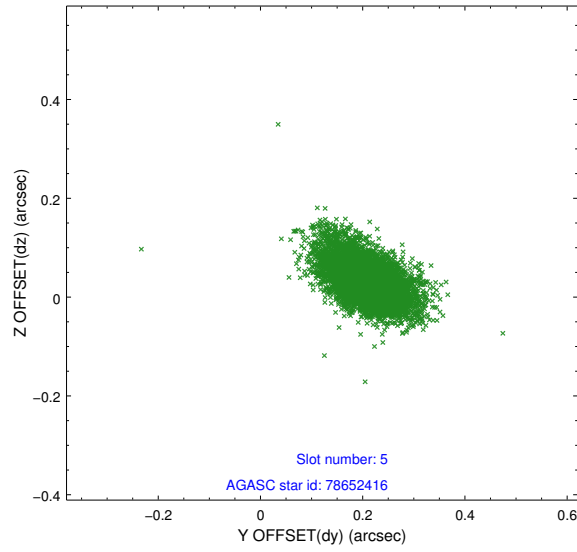
2.4.1 Slot 3



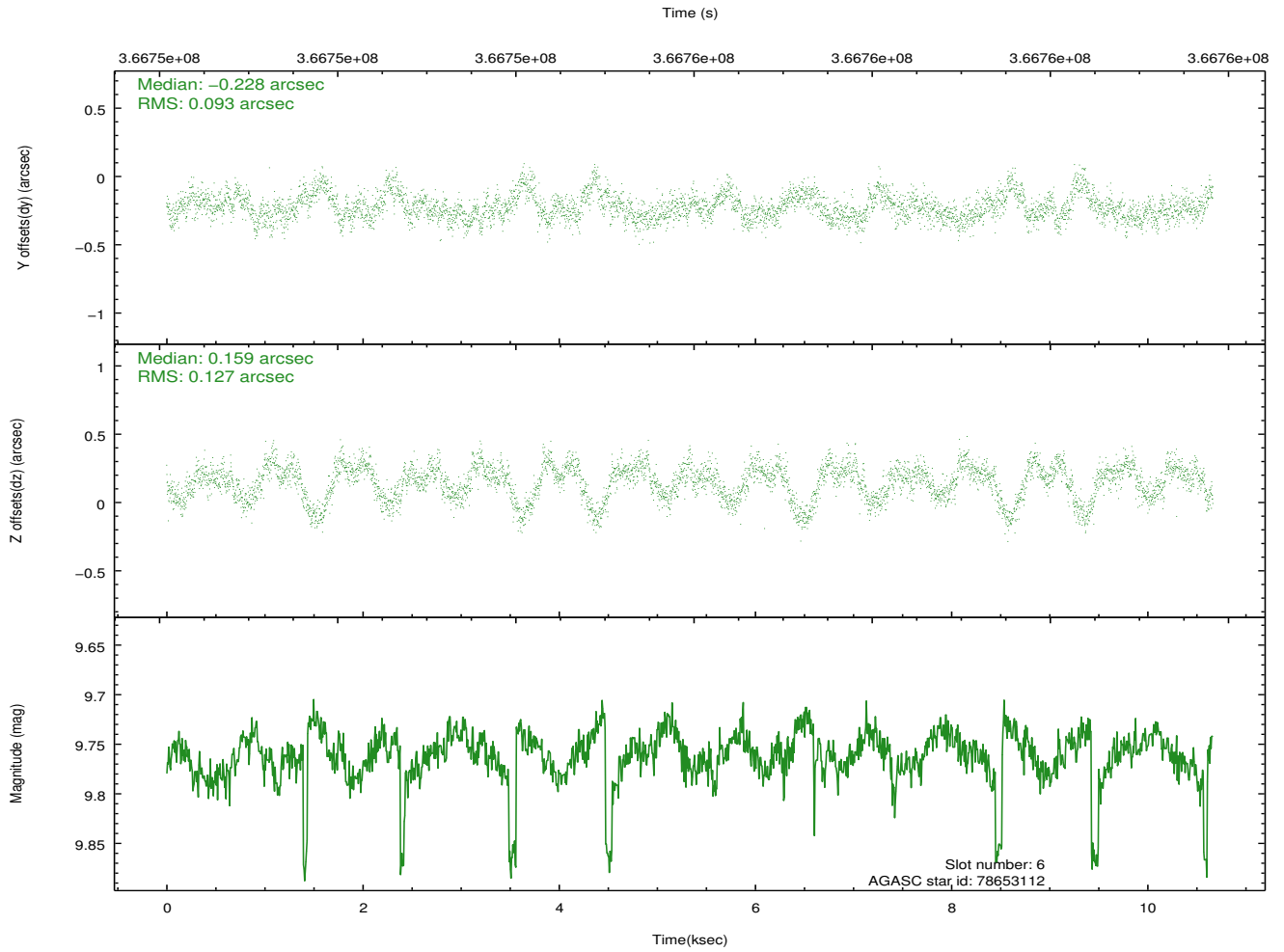
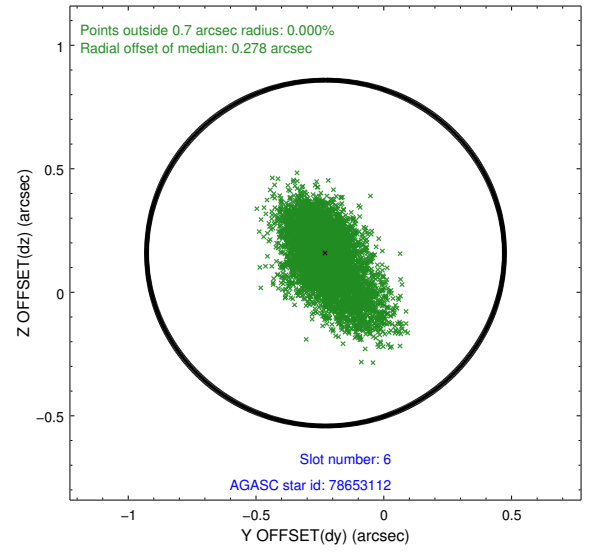
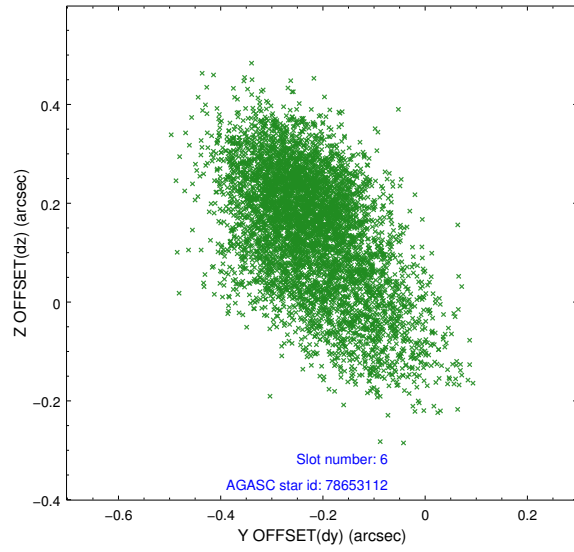
2.4.2 Slot 4



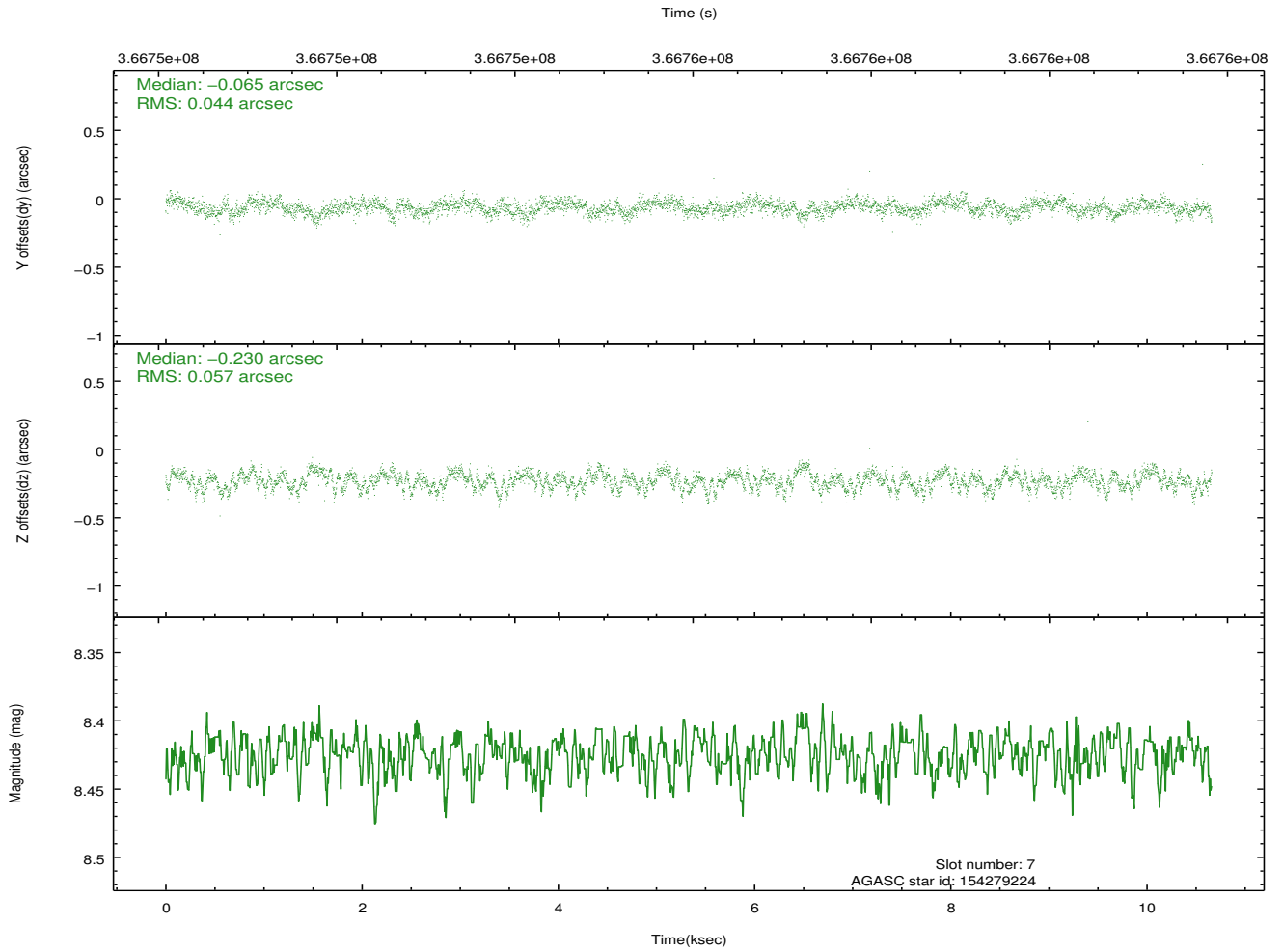
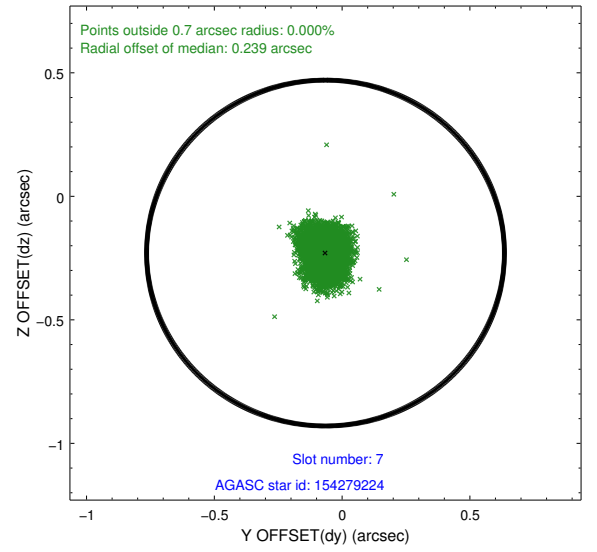
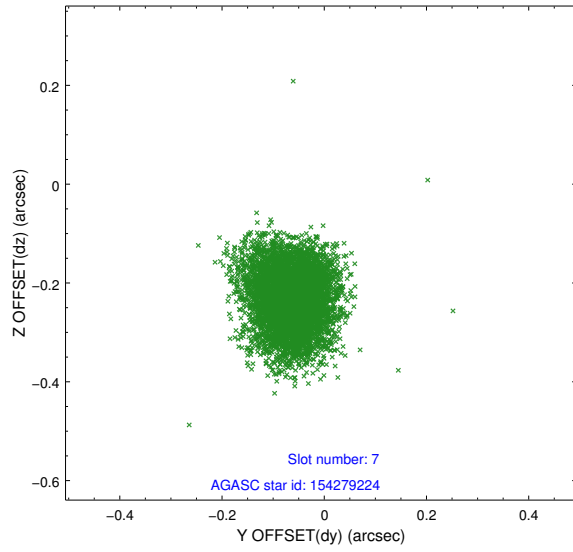
2.4.3 Slot 5



2.4.4 Slot 6

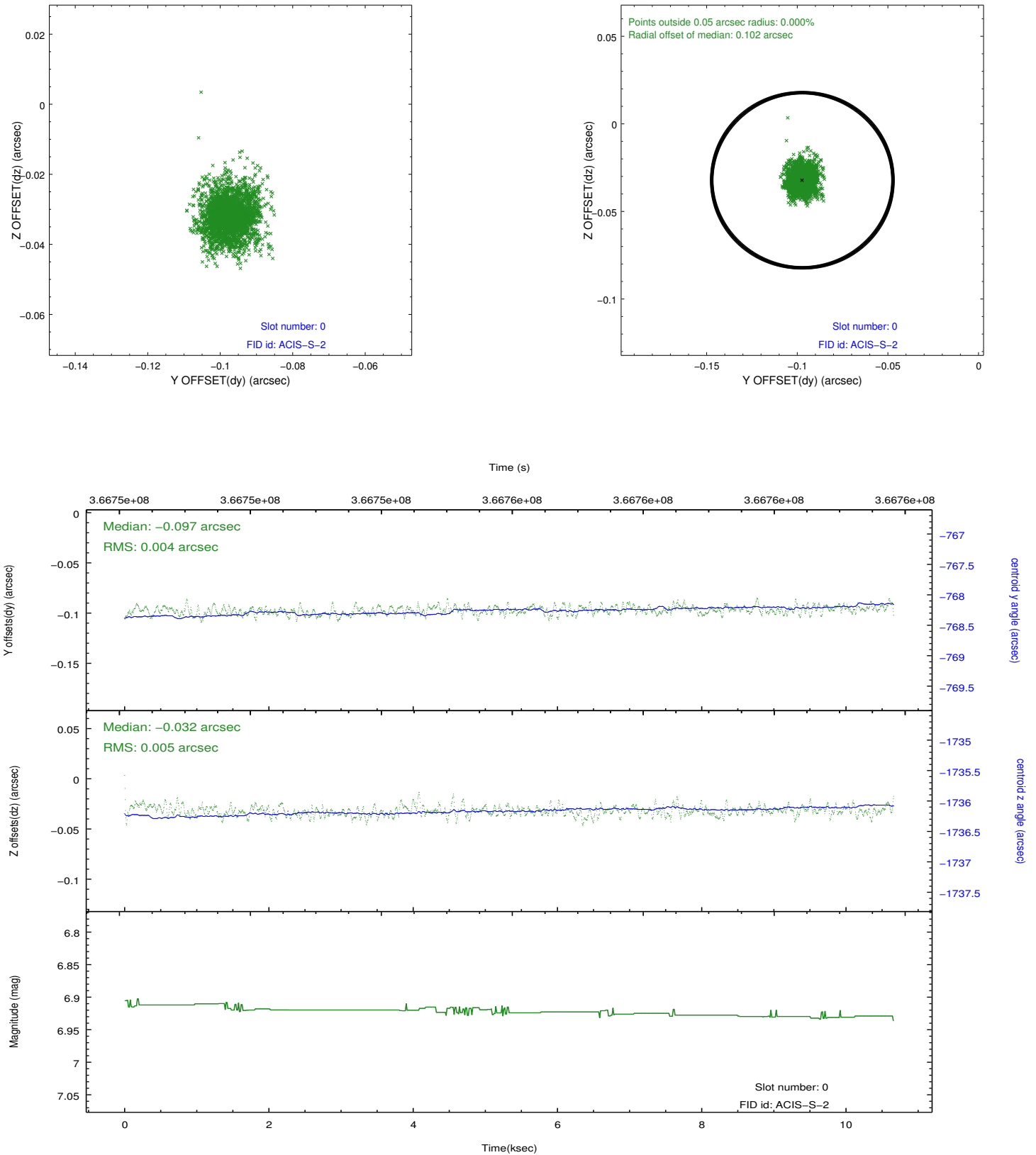


2.4.5 Slot 7

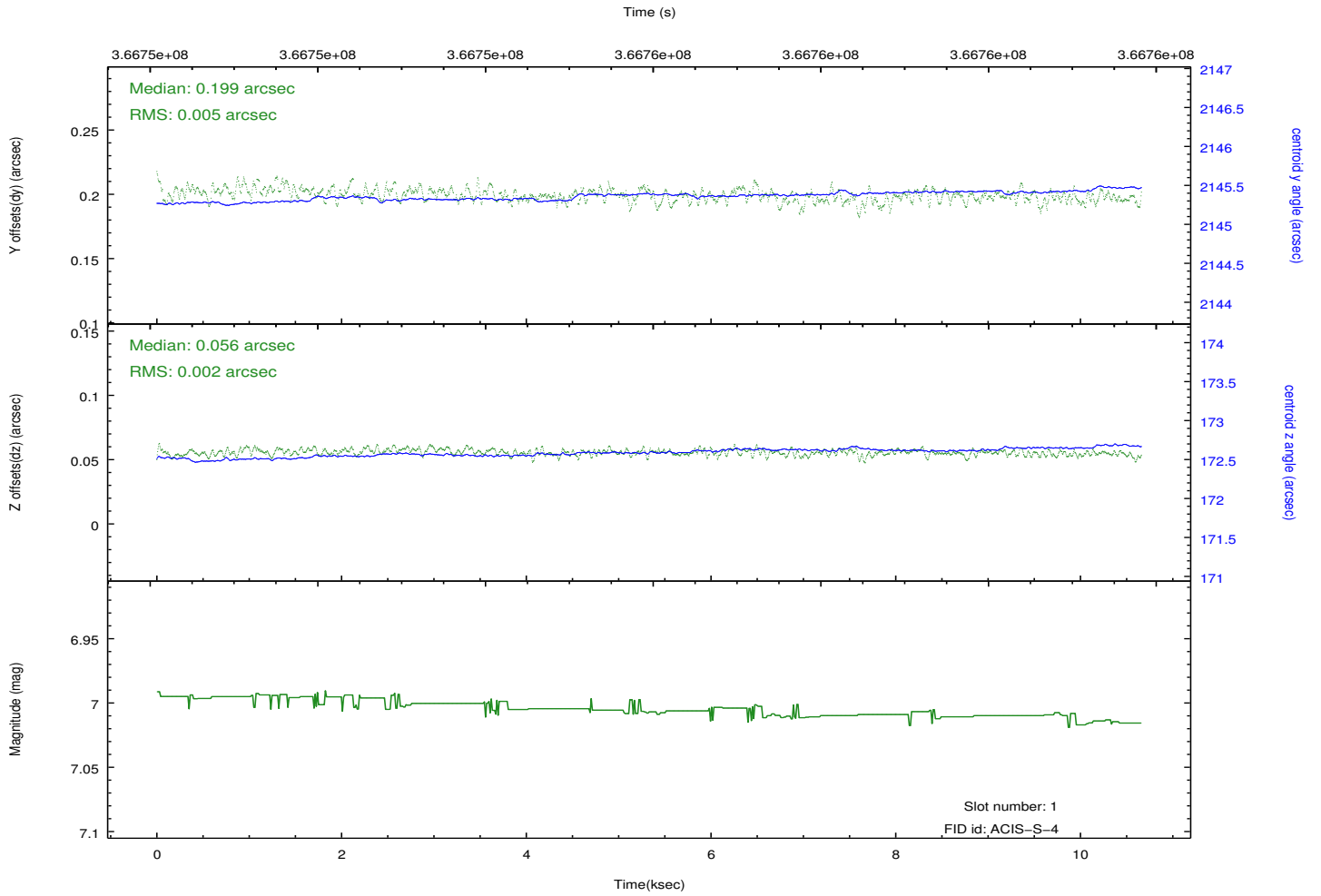
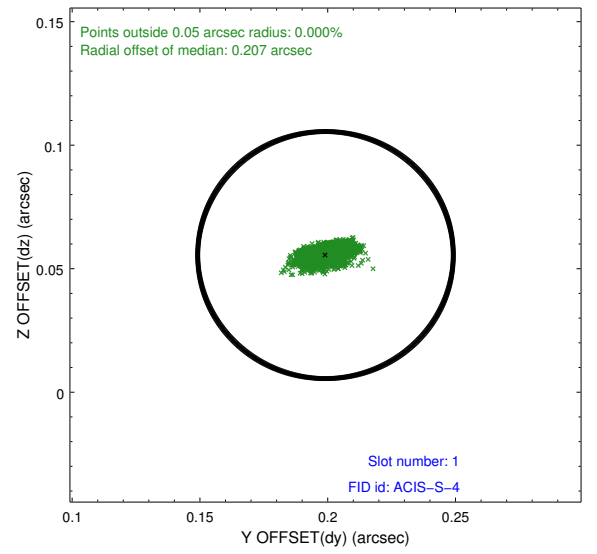
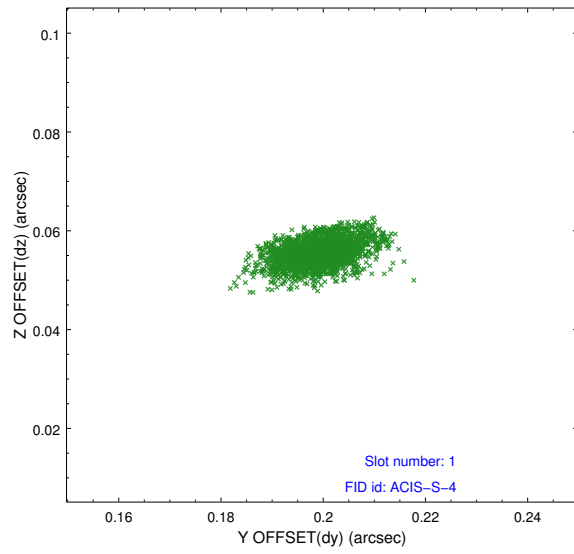


2.5 FID Slots

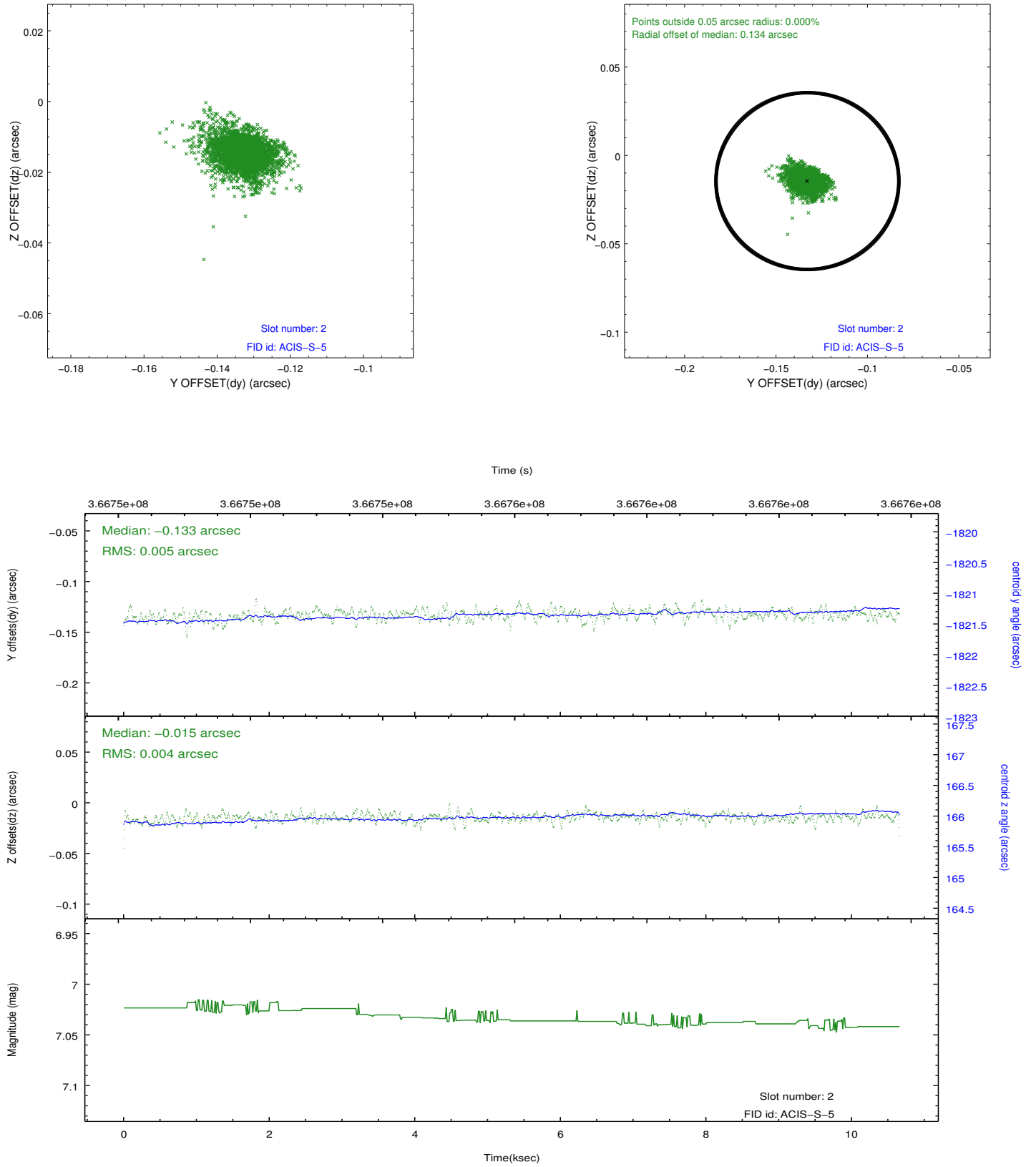
2.5.1 Slot 0



2.5.2 Slot 1



2.5.3 Slot 2



A Summary

A.1 Status

V&V Scientist	Jen Lauer
V&V Date (YYYY-MM-DD)	2012.06.14
V&V Edition	1
V&V Disposition and Status	OK
V&V Charge Time	9.63839996

A.2 Comments