

V&V Reference Report

L2 ASCDS Version : 8.4.5

Observation 11341 - L2 Version 2
Chandra X-Ray Center

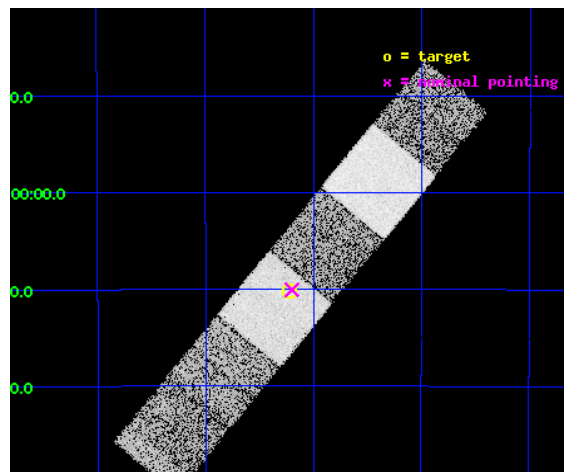
L2 Processing Date : Jun 24 2012

Contents

1	Front	2
2	OBI	3
2.1	OBI	3
2.1.1	Images	3
2.1.2	Bias	3
2.1.3	Parameters	4
2.1.4	Events	4
2.2	Compared Parameters	5
2.3	Aspect	6
2.4	Star Slots	9
2.4.1	Slot 3	9
2.4.2	Slot 4	10
2.4.3	Slot 5	11
2.4.4	Slot 6	12
2.4.5	Slot 7	13
2.5	FID Slots	14
2.5.1	Slot 0	14
2.5.2	Slot 1	15
2.5.3	Slot 2	16
A	Summary	17
A.1	Status	17
A.2	Comments	17

1 Front

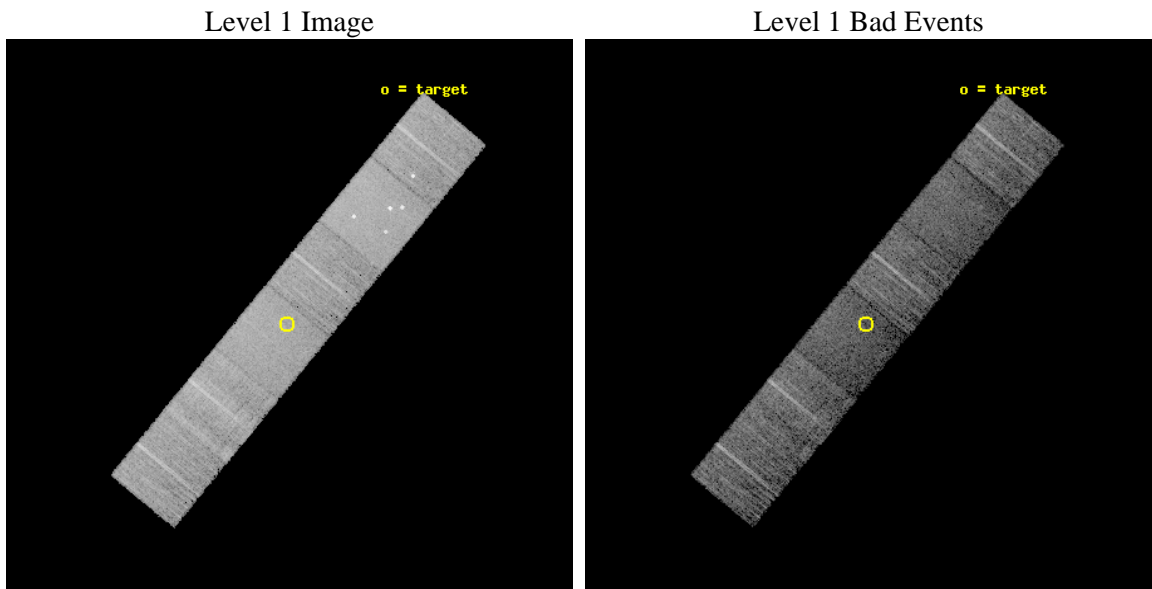
seq_num	600860	Sequence number
obs_id	11341	Observation id
title	Accretion onto nuclear black holes in early type galaxies: comparing field vs. clusters	Proposal title
observer	Elena Gallo	Principal investigator
object	PGC085239	Source name
dtcycle	0	
cycle	P	events from which exps? Prim/Second/Both
ra_targ	338.056	Observer's specified target RA [deg]
dec_targ	-41.16931	Observer's specified target Dec [deg]
ra_nom	338.04989346158	Nominal RA [deg]
dec_nom	-41.167748406759	Nominal Dec [deg]
roll_nom	129.48693103677	Nominal Roll [deg]
revision	2	Processing version of data
ontime	6927.9999742508	Sum of GTIs [s]
livetime	6840.2734670361	Livetime [s]
ontime4	6927.9999742508	Sum of GTIs [s]
ontime5	6927.9999742508	Sum of GTIs [s]
ontime6	6927.9999742508	Sum of GTIs [s]
ontime7	6927.9999742508	Sum of GTIs [s]
ontime8	6927.9999742508	Sum of GTIs [s]
ontime9	6927.9999742508	Sum of GTIs [s]
l2events	84245	Number of level 2 events



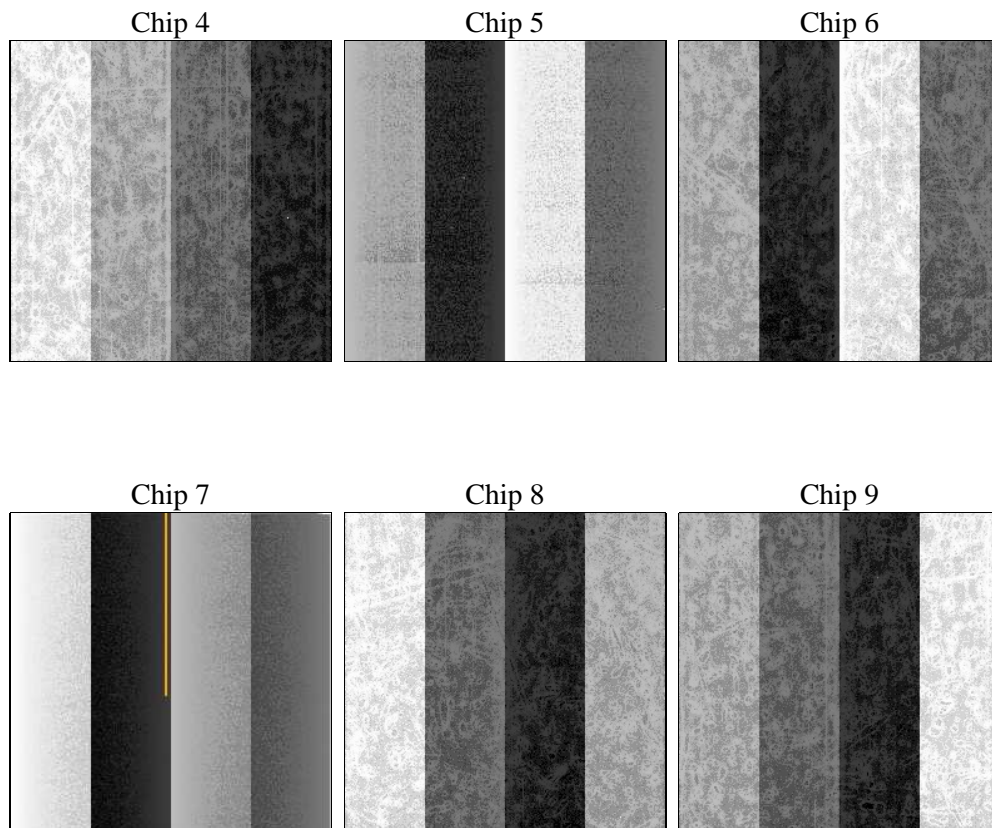
2 OBI

2.1 OBI

2.1.1 Images



2.1.2 Bias



2.1.3 Parameters

obi_num	0	Obi number	sched_exp_time	6800.000000	[s] Scheduled observation exposure time
ascdsver	8.4.5	Processing system revision	ontime	6927.9999742508	Sum of GTIs [s]
caldsver	4.4.10	 	ontime4	6927.9999742508	Sum of GTIs [s]
date	2012-06-24T08:20:31	Date and time of file creation	ontime5	6927.9999742508	Sum of GTIs [s]
revision	2	Processing version of data	ontime6	6927.9999742508	Sum of GTIs [s]
			ontime7	6927.9999742508	Sum of GTIs [s]
			ontime8	6927.9999742508	Sum of GTIs [s]
			ontime9	6927.9999742508	Sum of GTIs [s]
			l1events	391957	Number of level 1 events

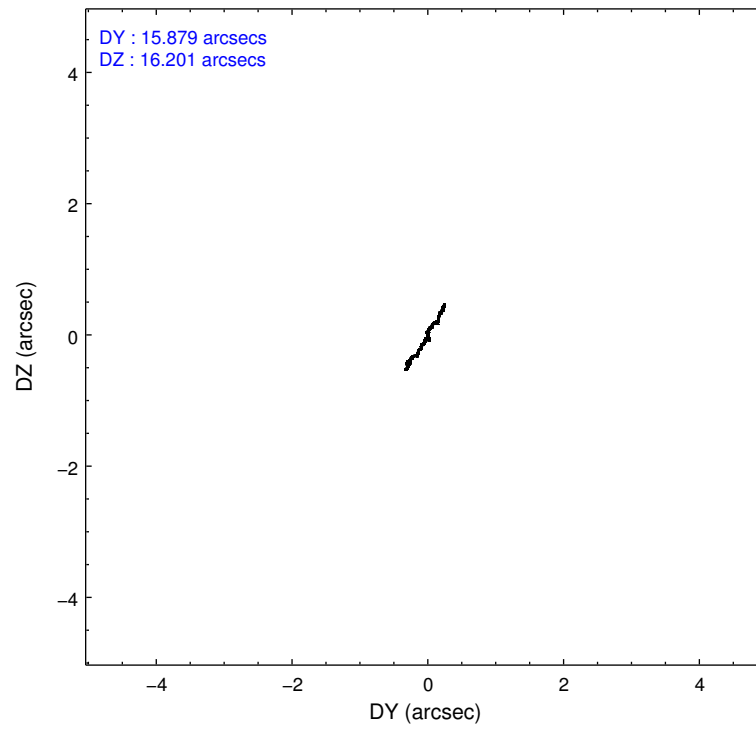
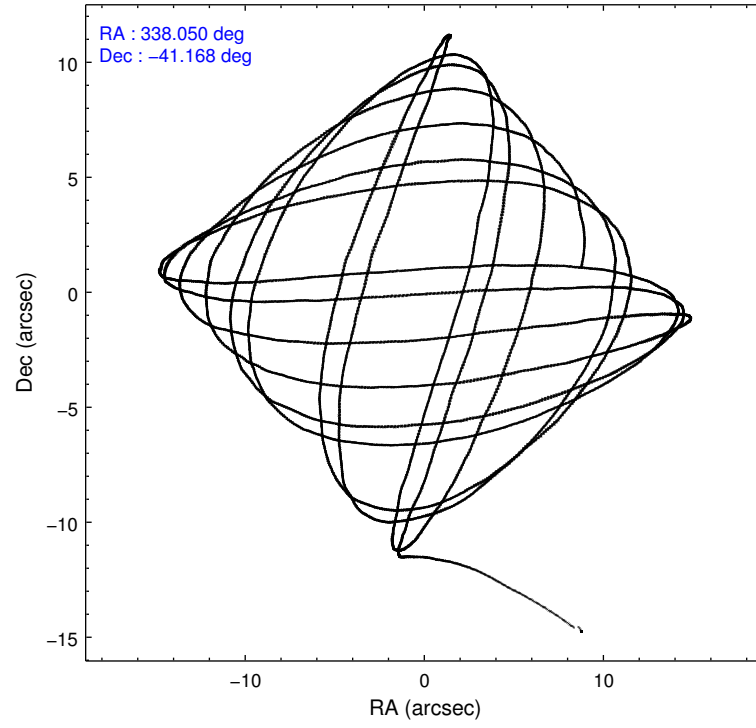
2.1.4 Events

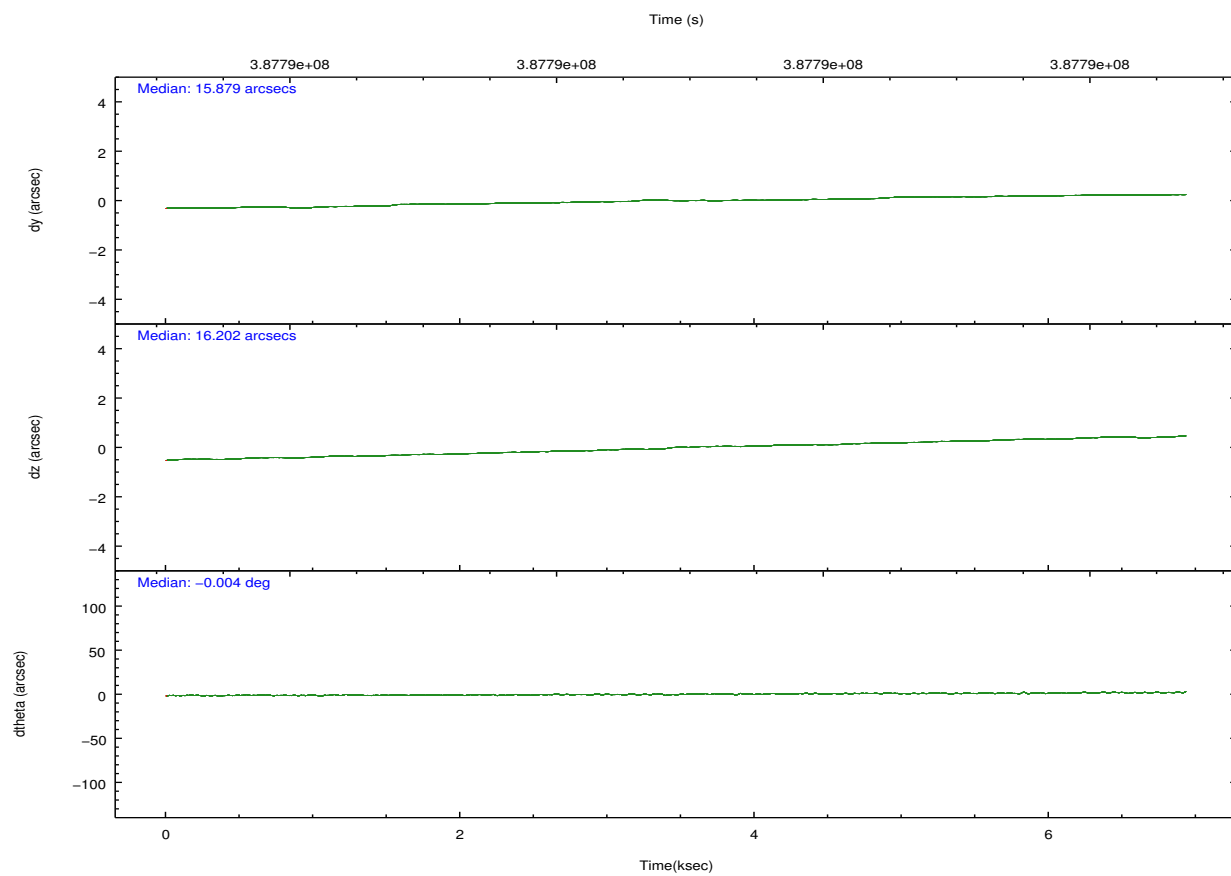
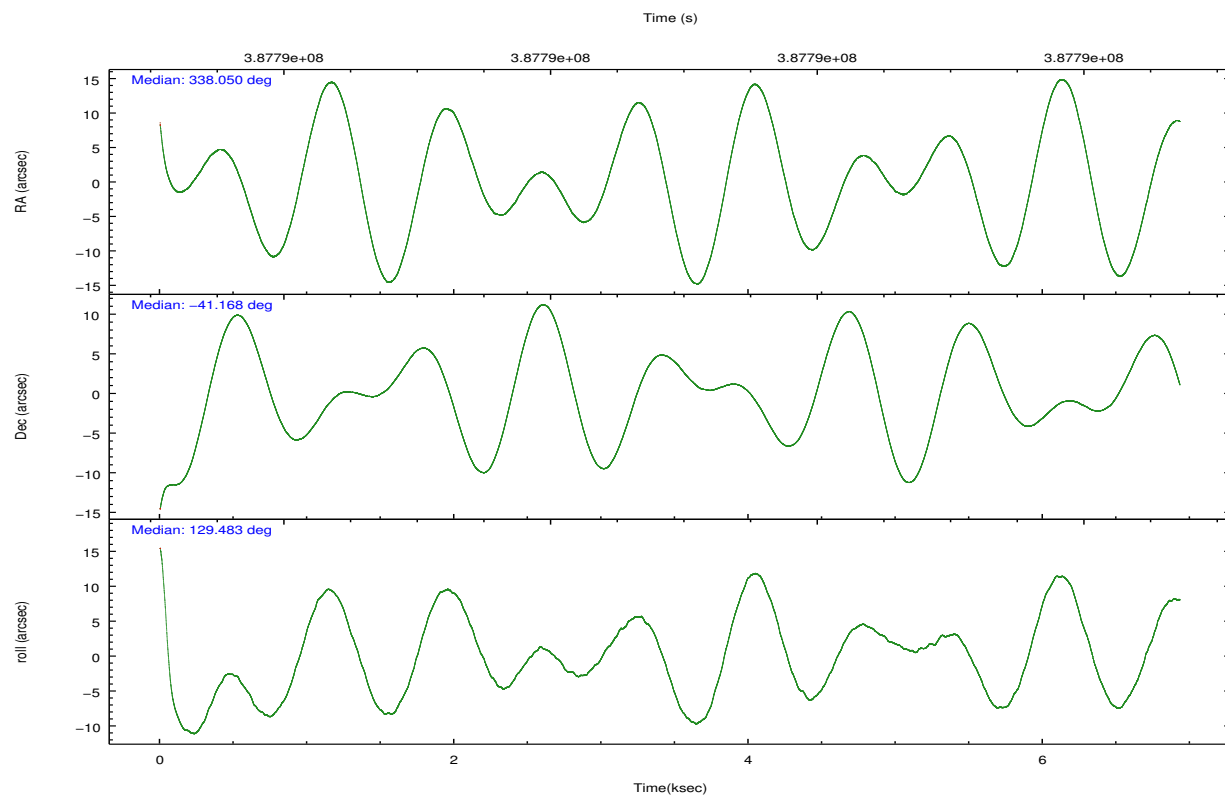
	ccd 4	ccd 5	ccd 6	ccd 7	ccd 8	ccd 9		ccd 4	ccd 5	ccd 6	ccd 7	ccd 8	ccd 9
level 1 events	61728	83729	56358	65625	70728	53789	grade 0 events	3845	7366	2088	2880	5642	2429
rejected events	54325	42348	50675	37340	53444	47614		6%	8%	3%	4%	7%	4%
rejected %	88%	50%	89%	56%	75%	88%	grade 1 events	70	202	30	70	64	39
								0%	0%	0%	0%	0%	0%
							grade 2 events	1579	12112	1340	6007	4195	1358
								2%	14%	2%	9%	5%	2%
							grade 3 events	676	1619	657	2642	1794	697
								1%	1%	1%	4%	2%	1%
							grade 4 events	652	1593	624	2613	1702	648
								1%	1%	1%	3%	2%	1%
							grade 5 events	2428	6158	2455	6963	3509	2605
								3%	7%	4%	10%	4%	4%
							grade 6 events	1030	20920	1289	15736	4866	1376
								1%	24%	2%	23%	6%	2%
							grade 7 events	51448	33759	47875	28714	48956	44637
								83%	40%	84%	43%	69%	82%

2.2 Compared Parameters

Parameter	Planned	Actual	Parameter	Planned	Actual
Instrument	ACIS	ACIS	Obspar format version number	7	7
Detector	ACIS-456789	ACIS-456789	Obspar file type	PREDICTED	ACTUAL
Grating	NONE	NONE	Obspar update status	NONE	UPDATED
Data mode	VFAINT	VFAINT	CCD I0 on	N	N
Observation mode	POINTING	POINTING	CCD I1 on	N	N
[deg] Pointing RA	338.084090	338.0498934615774	CCD I2 on	N	N
[deg] Pointing Dec	-41.176974	-41.1677484067586	CCD I3 on	N	N
[deg] Pointing Roll	129.352795	129.4869310367746	CCD S0 on	O1	Y
[mm] SIM focus pos	-0.684267	-0.6828225247311905	CCD S1 on	Y	Y
[mm] SIM defocus	0	0.001444936568705701	CCD S2 on	Y	Y
[mm] SIM translation stage pos	-190.132523	-190.1400660498719	CCD S3 on	Y	Y
[mm] SIM translation stage offset	0	0.00754346686406393	CCD S4 on	Y	Y
[s] Observation start time (MET)	387787561.184000	387786322.93533	CCD S5 on	O2	Y
Observation start date	2010-04-16T06:44:55	2010-04-16T06:25:22	Number of optional ACIS chips dropped	0	0
[s] Observation end time (MET)	387794361.184000	387795194.31078	On-chip summing requested	N	N
Observation end date	2010-04-16T08:38:15	2010-04-16T08:53:14	Subarray requested	NONE	NONE
Read mode	TIMED	TIMED	Alternating exposures requested	N	N
			[s] Primary exposure time	0.000000	3.2

2.3 Aspect



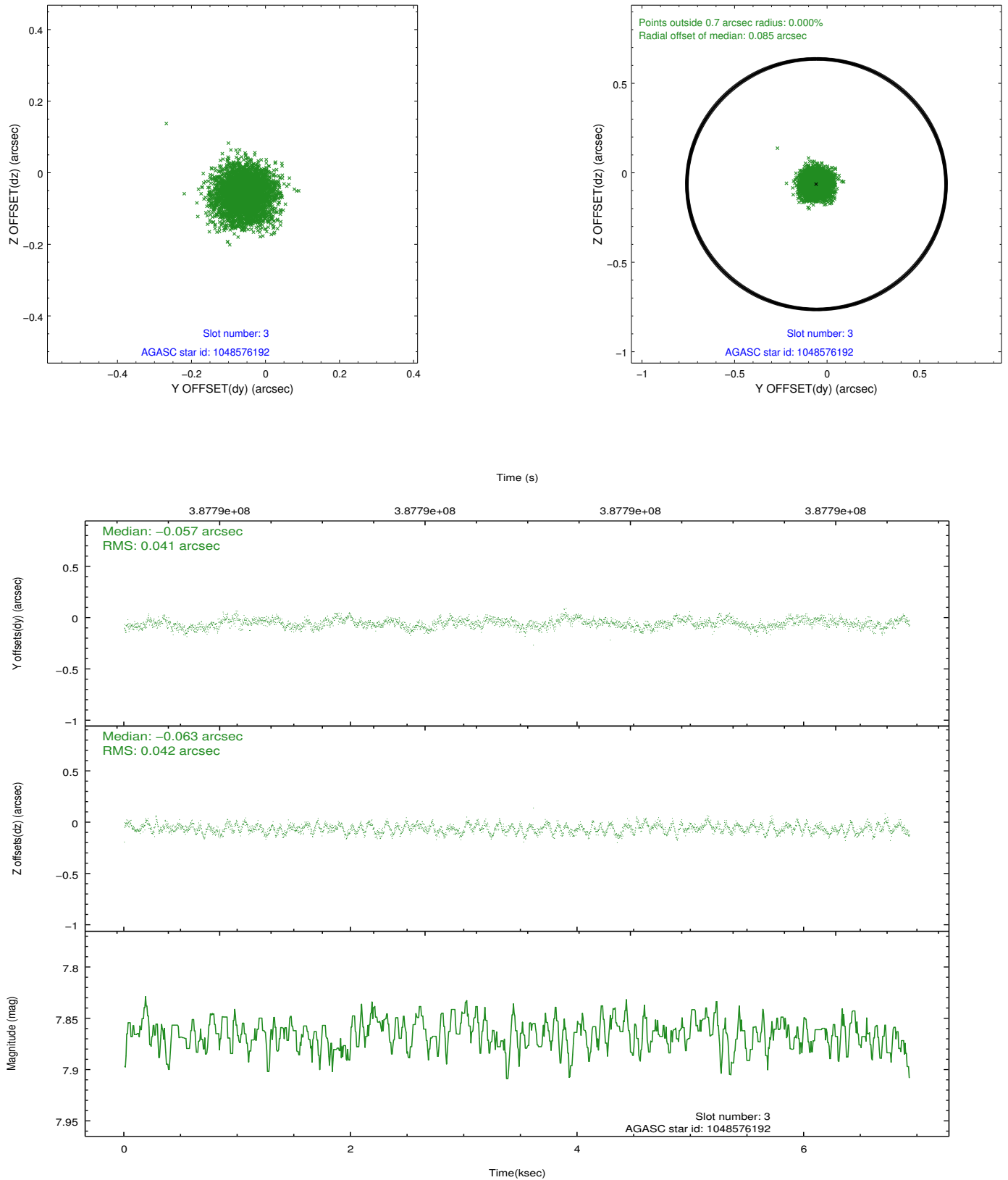


Slot Statistics

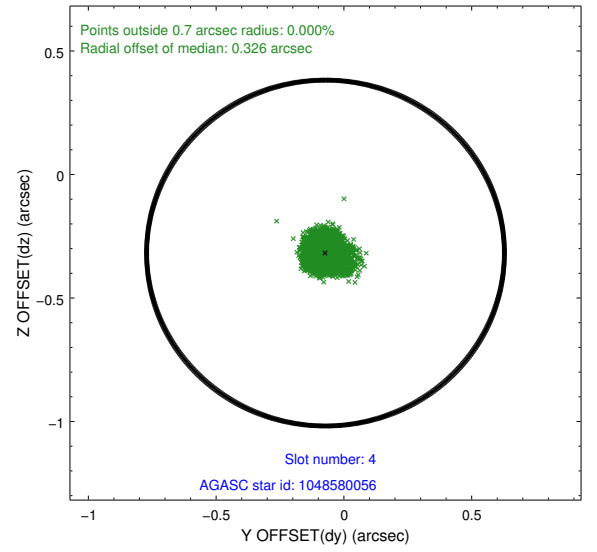
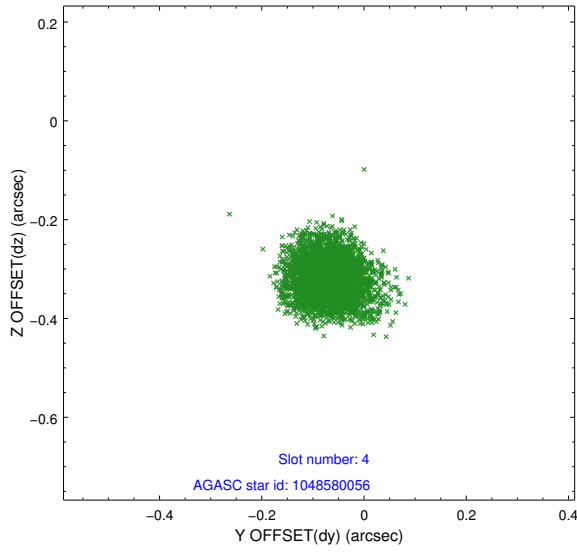
slot	status	id	mag	n_pts	med_dy	med_dz	dr1	dr2	ra	dec	mean_y	mean_z
0	FID	ACIS-S-2	6.89	1691	-0.089	-0.018	0.010	0.014	0.000000	0.000000	-768.94	-1737.60
1	FID	ACIS-S-4	6.97	1691	0.172	0.048	0.008	0.015	0.000000	0.000000	2144.22	170.08
2	FID	ACIS-S-5	7.00	1691	-0.115	-0.022	0.008	0.013	0.000000	0.000000	-1820.74	164.64
3	GUIDE	1048576192	7.87	3382	-0.057	-0.063	0.064	0.098	337.849469	-41.433179	-312.73	1075.29
4	GUIDE	1048580056	8.05	3380	-0.072	-0.318	0.063	0.100	338.512705	-41.729621	-2270.99	373.08
5	GUIDE	1048580984	8.94	3379	0.073	-0.135	0.079	0.126	337.721687	-41.674633	-770.39	1891.15
6	GUIDE	1048583672	9.29	3380	0.006	-0.032	0.091	0.146	337.759643	-41.412387	-101.71	1216.44
7	GUIDE	1048585392	8.74	3381	0.048	0.550	0.074	0.116	339.022361	-41.174824	-1616.64	-1961.09

2.4 Star Slots

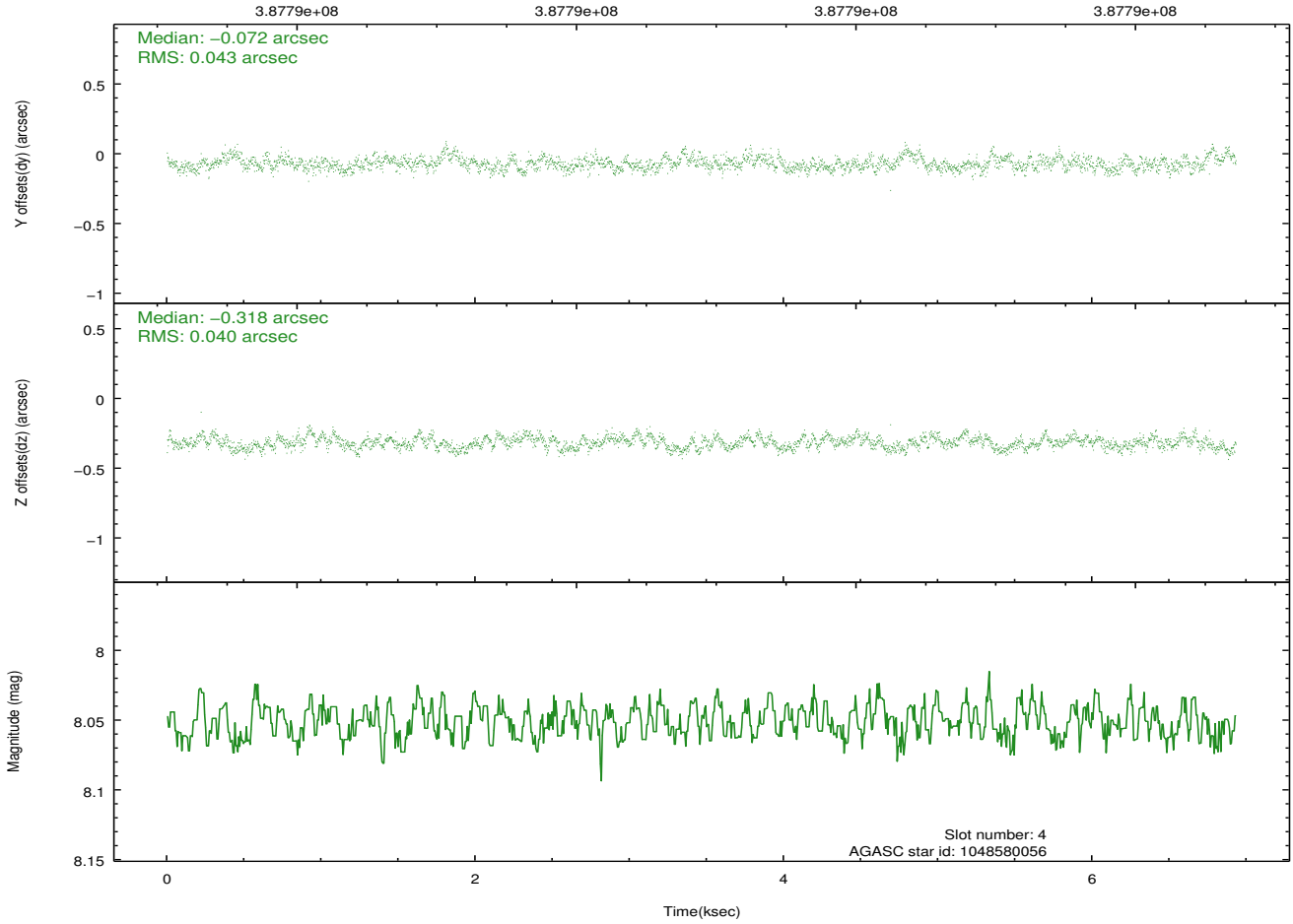
2.4.1 Slot 3



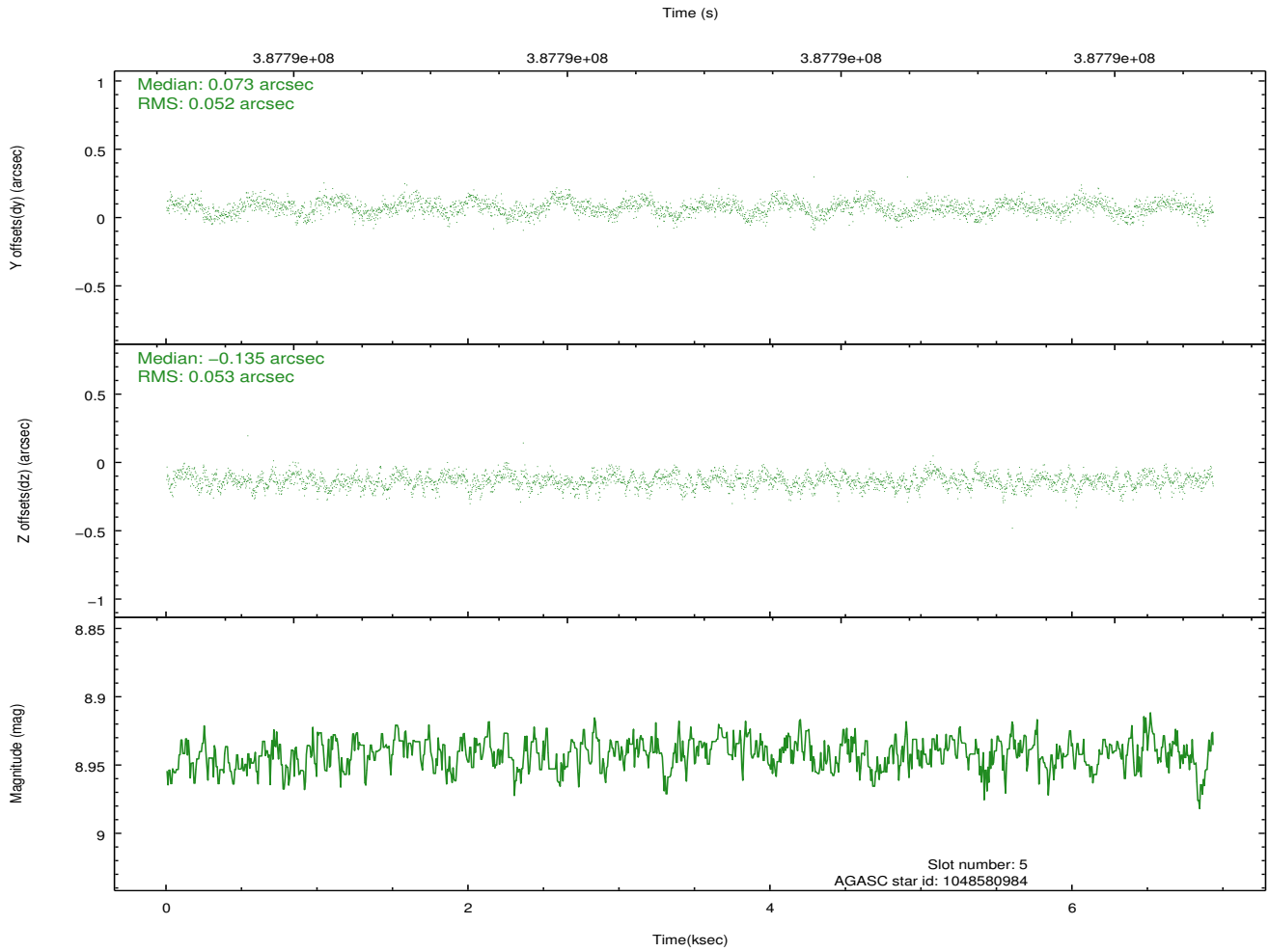
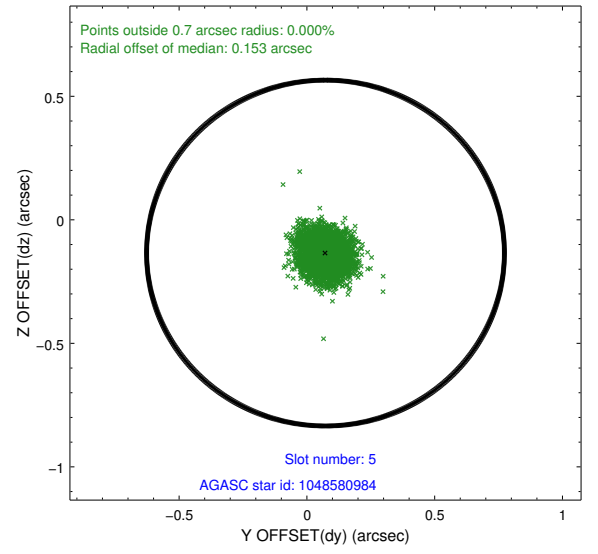
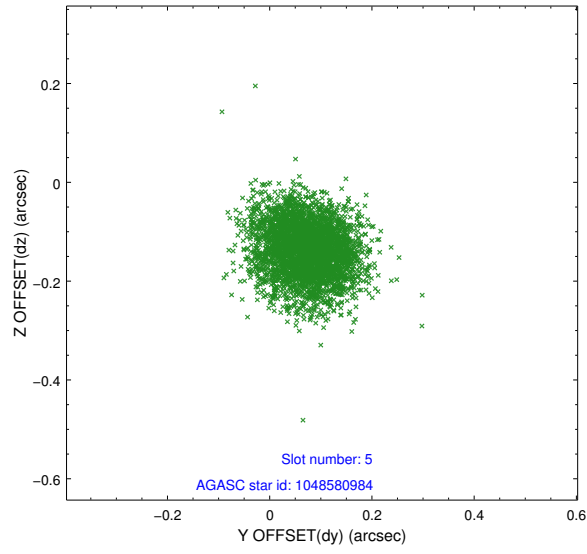
2.4.2 Slot 4



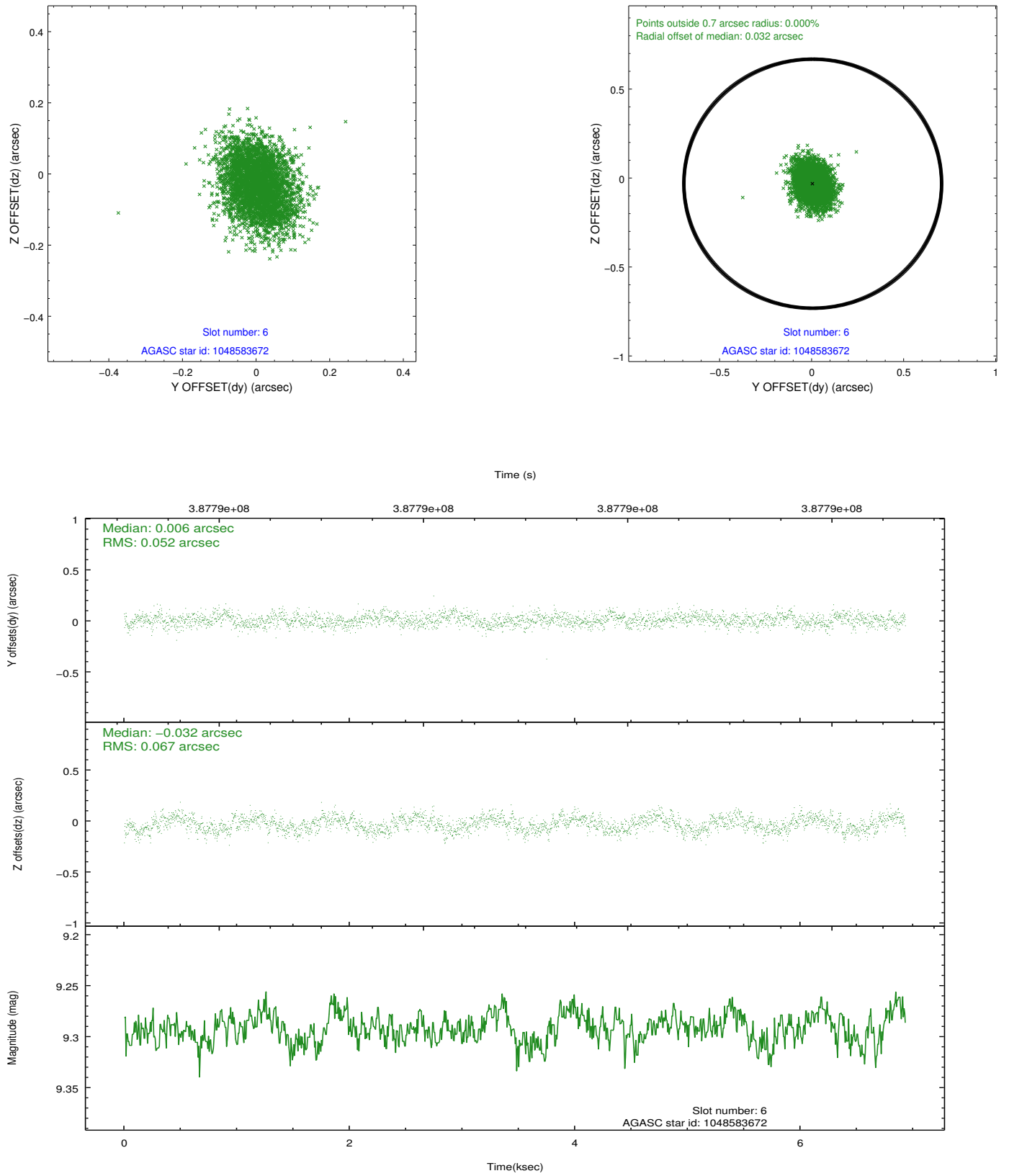
Time (s)



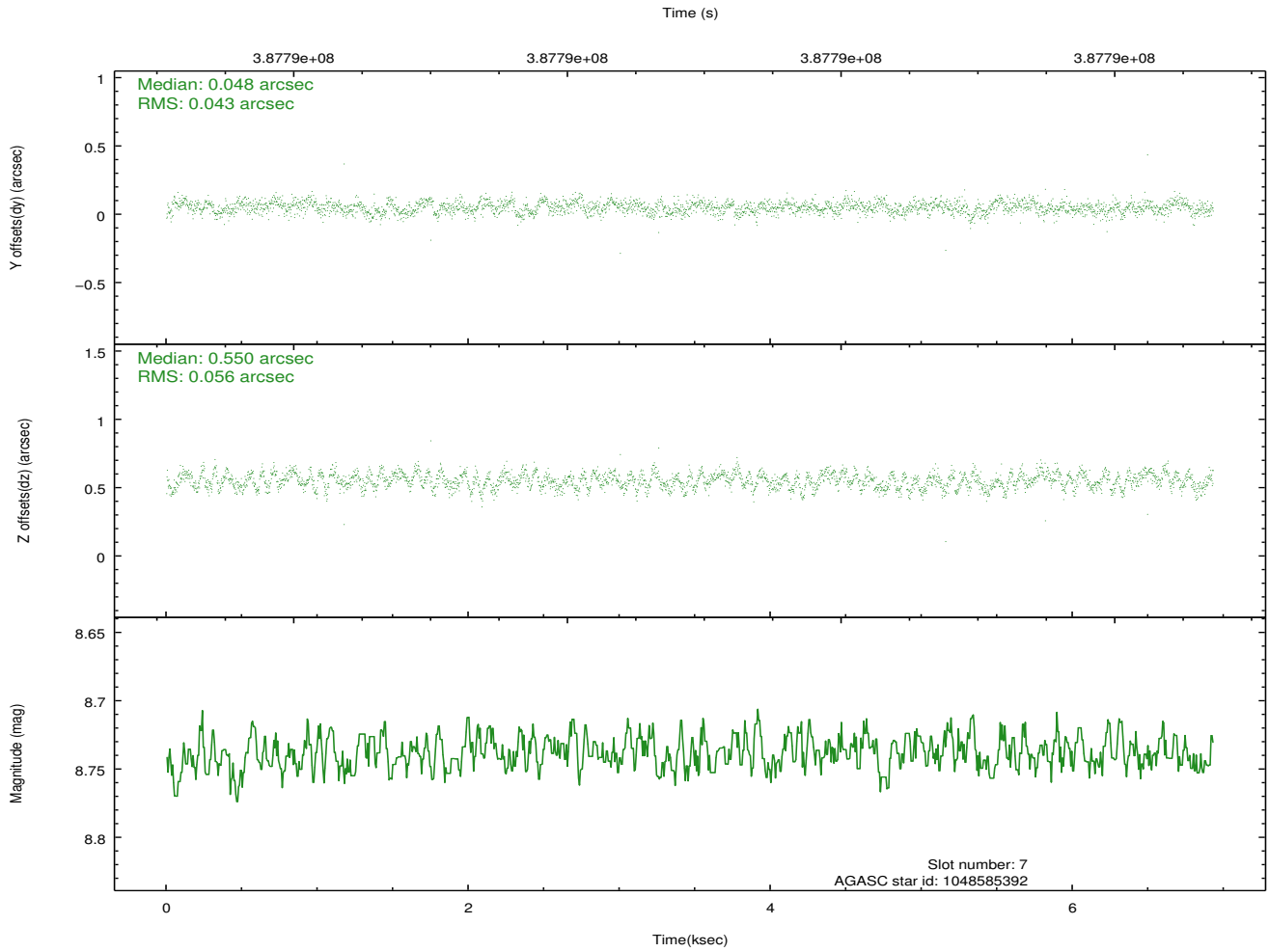
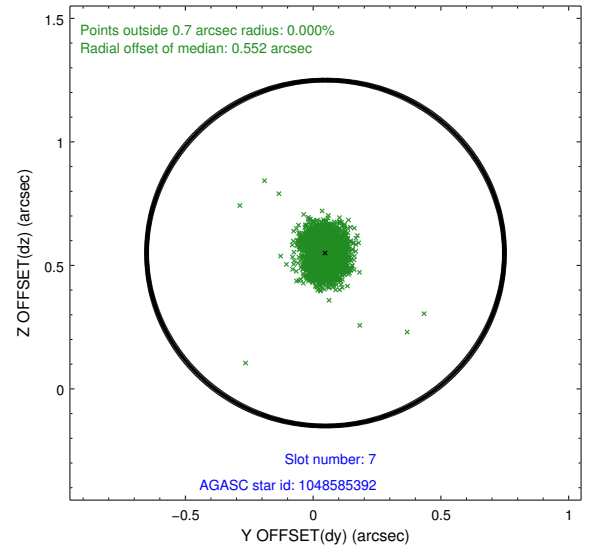
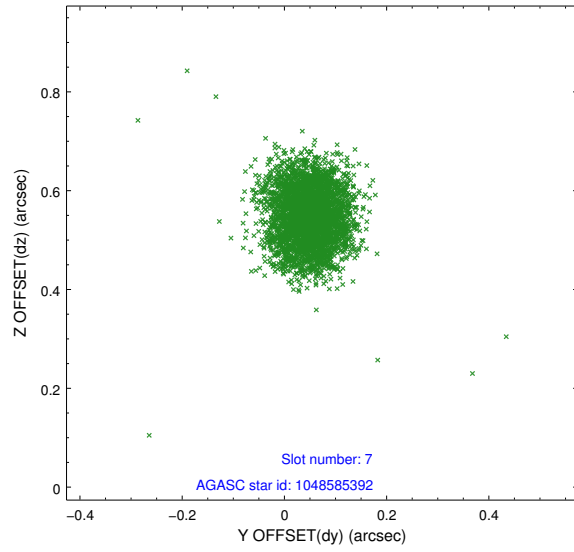
2.4.3 Slot 5



2.4.4 Slot 6

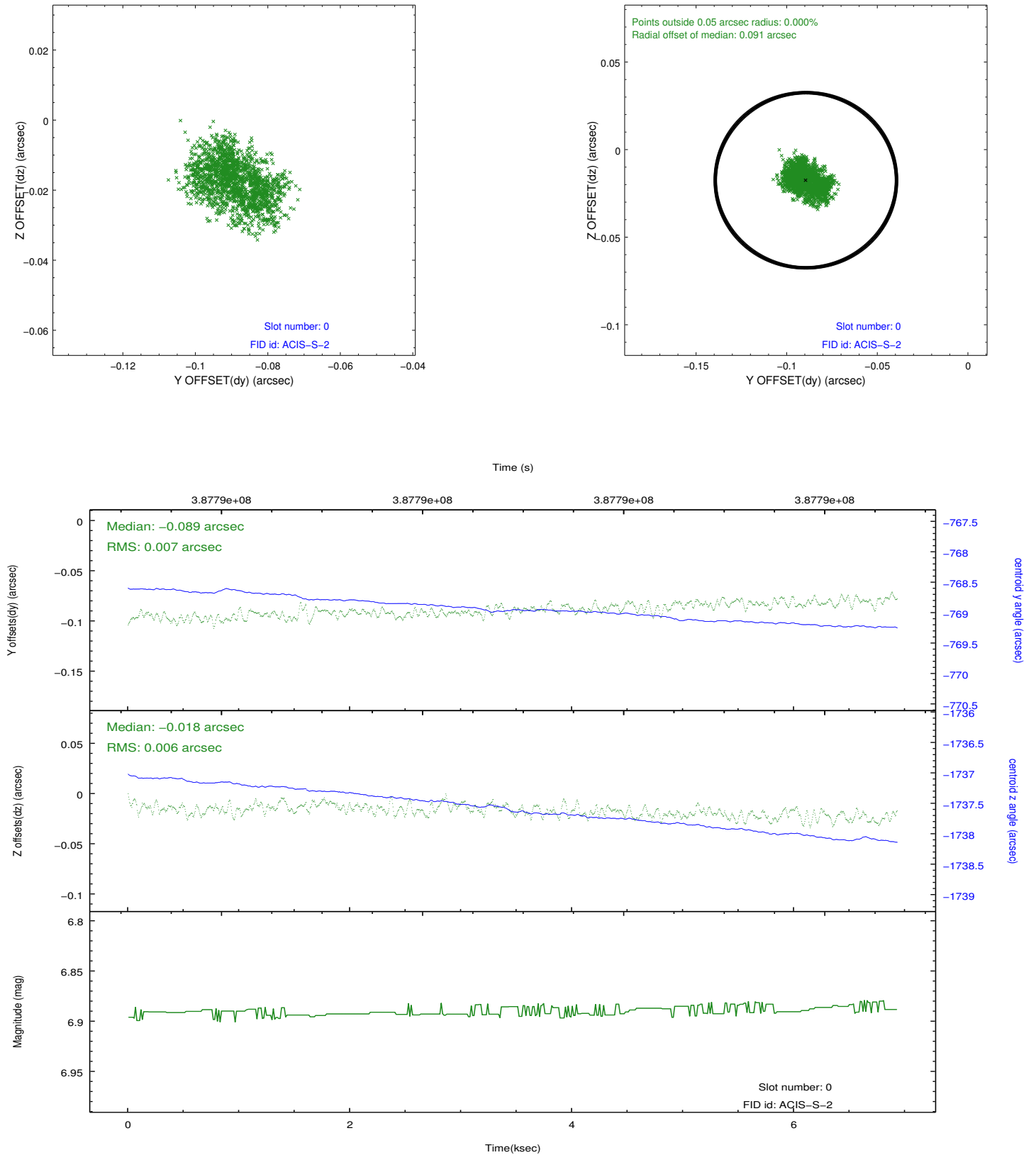


2.4.5 Slot 7

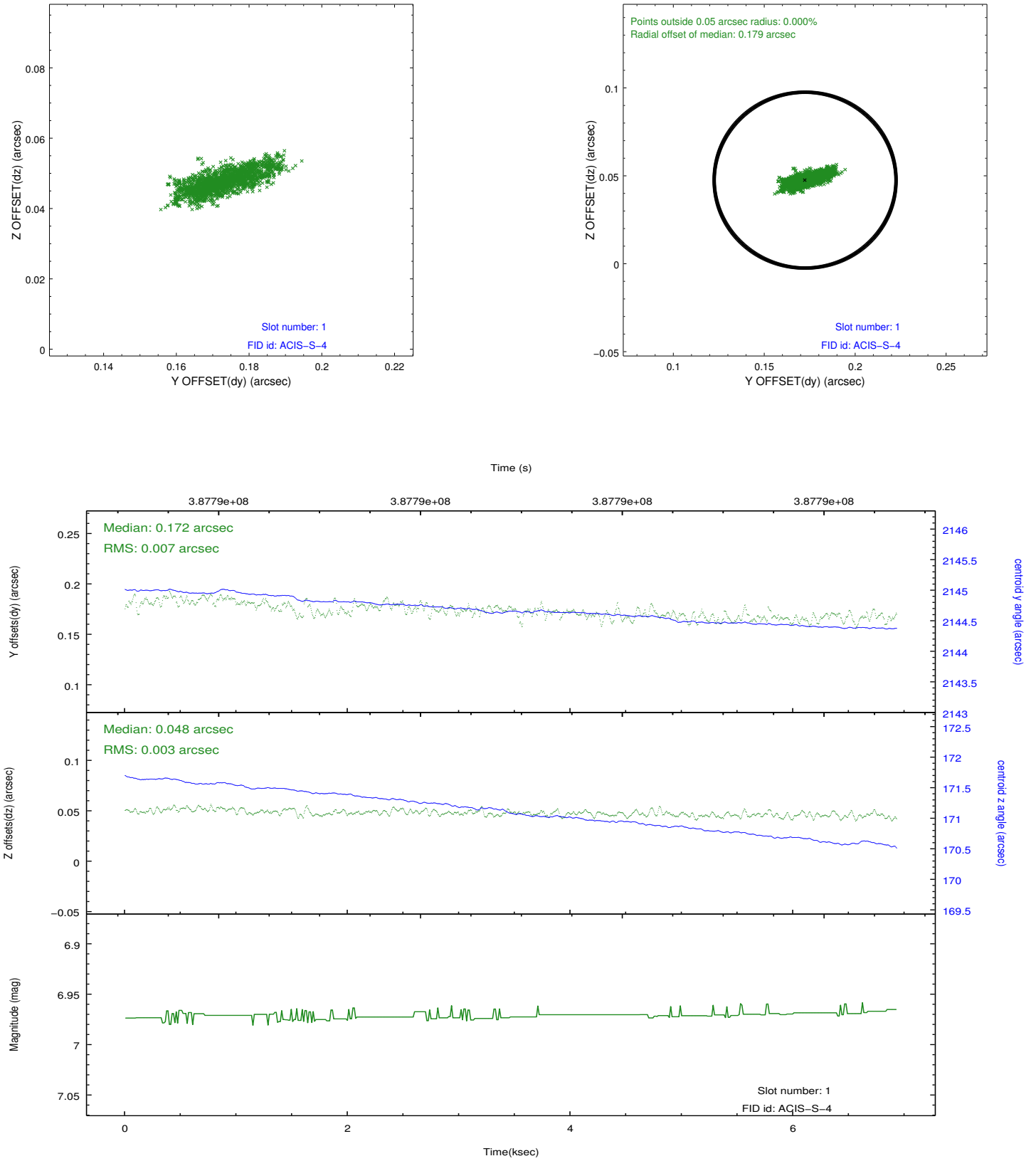


2.5 FID Slots

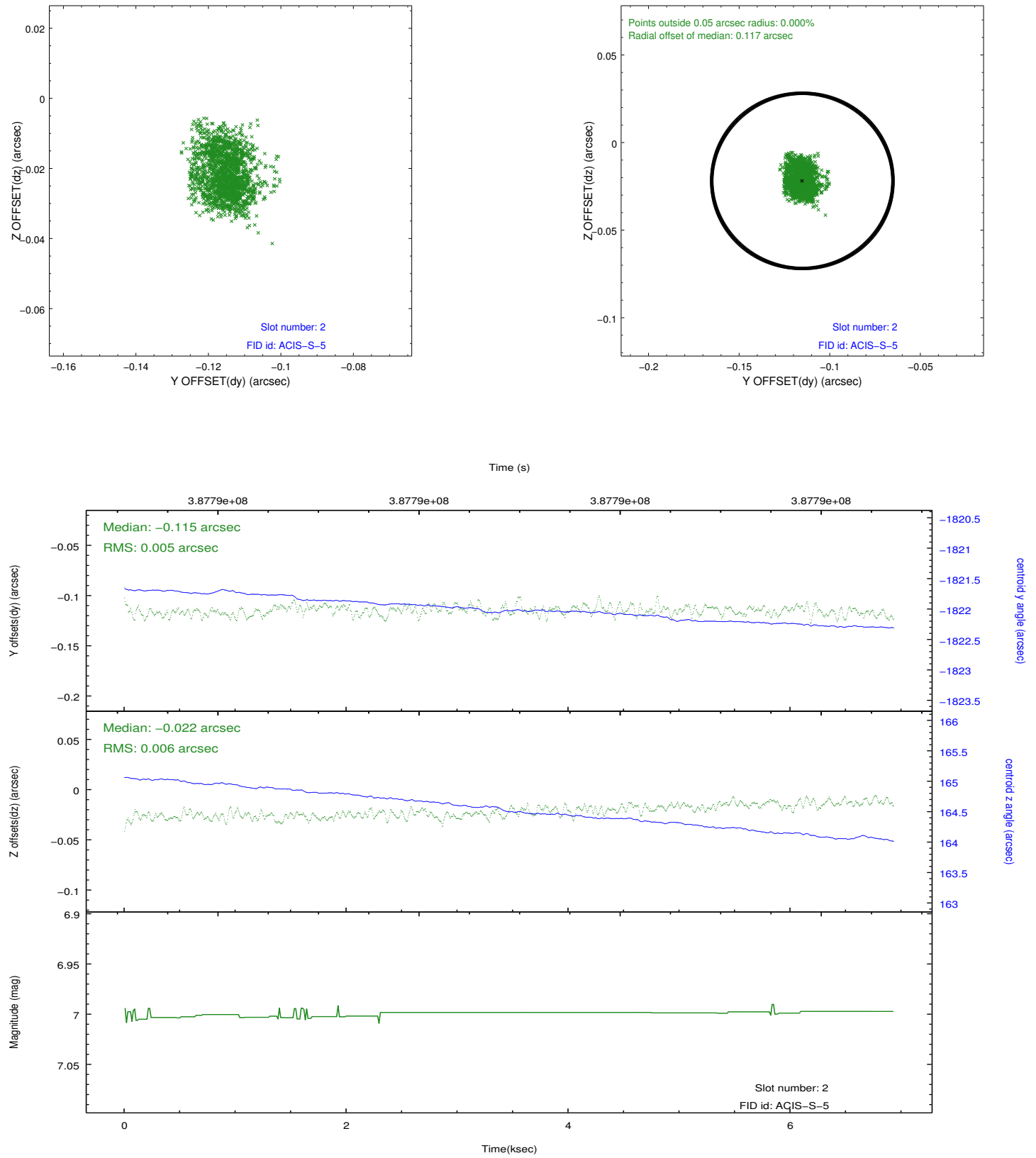
2.5.1 Slot 0



2.5.2 Slot 1



2.5.3 Slot 2



A Summary

A.1 Status

V&V Scientist	Jen Lauer
V&V Date (YYYY-MM-DD)	2012.06.29
V&V Edition	1
V&V Disposition and Status	OK
V&V Charge Time	6.9279999742508

A.2 Comments