

# V&V Reference Report

## L2 ASCDS Version : 8.4.5

Observation 11267 - L2 Version 2  
Chandra X-Ray Center

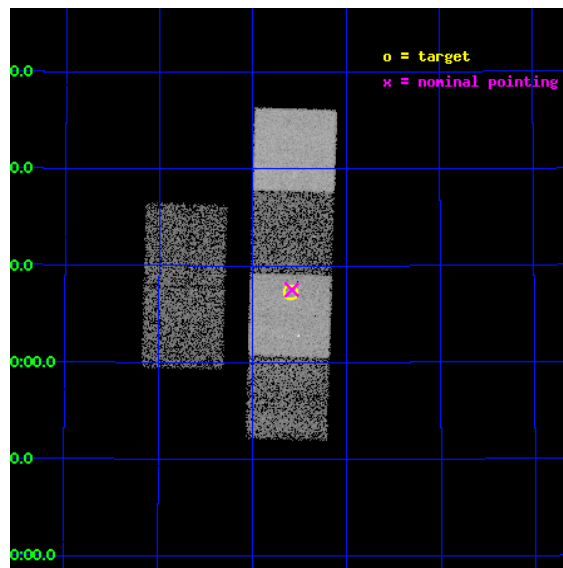
L2 Processing Date : Jun 28 2012

## Contents

<b>1</b>	<b>Front</b>	<b>2</b>
<b>2</b>	<b>OBI</b>	<b>3</b>
2.1	OBI . . . . .	3
2.1.1	Images . . . . .	3
2.1.2	Bias . . . . .	3
2.1.3	Parameters . . . . .	4
2.1.4	Events . . . . .	4
2.2	Compared Parameters . . . . .	5
2.3	Aspect . . . . .	6
2.4	Star Slots . . . . .	9
2.4.1	Slot 3 . . . . .	9
2.4.2	Slot 4 . . . . .	10
2.4.3	Slot 5 . . . . .	11
2.4.4	Slot 6 . . . . .	12
2.4.5	Slot 7 . . . . .	13
2.5	FID Slots . . . . .	14
2.5.1	Slot 0 . . . . .	14
2.5.2	Slot 1 . . . . .	15
2.5.3	Slot 2 . . . . .	16
<b>A</b>	<b>Summary</b>	<b>17</b>
A.1	Status . . . . .	17
A.2	Comments . . . . .	17

# 1 Front

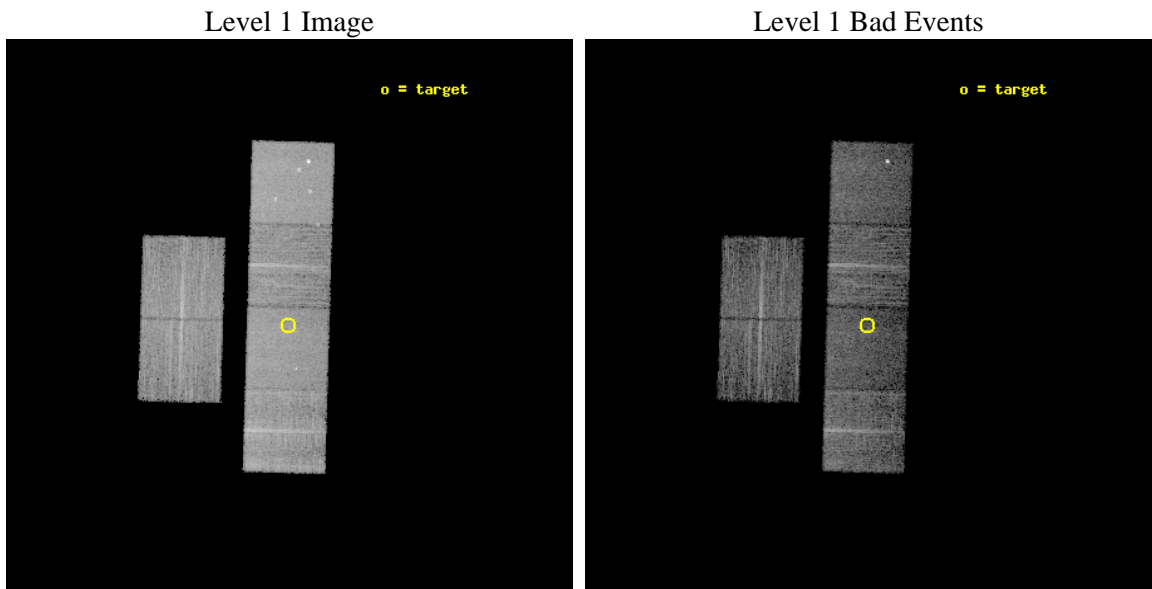
seq_num	600786	Sequence number
obs_id	11267	Observation id
title	Snapshots of Isolated Elliptical Galaxies	Proposal title
observer	Dr. DAVID BUOTE	Principal investigator
object	UGC 00746	Source name
dtcycle	0	&#160
cycle	P	events from which exps? Prim/Second/Both
ra_targ	17.899583	Observer's specified target RA [deg]
dec_targ	49.121194	Observer's specified target Dec [deg]
ra_nom	17.895466226107	Nominal RA [deg]
dec_nom	49.125255518928	Nominal Dec [deg]
roll_nom	91.65753579595	Nominal Roll [deg]
revision	2	Processing version of data
ontime	7548.5811088085	Sum of GTIs [s]
livetime	7452.9964295989	Livetime [s]
ontime2	7548.6221488118	Sum of GTIs [s]
ontime3	7545.2169985771	Sum of GTIs [s]
ontime5	7548.5400688052	Sum of GTIs [s]
ontime6	7548.4990288019	Sum of GTIs [s]
ontime7	7548.5811088085	Sum of GTIs [s]
ontime8	7548.4169487953	Sum of GTIs [s]
l2events	91494	Number of level 2 events



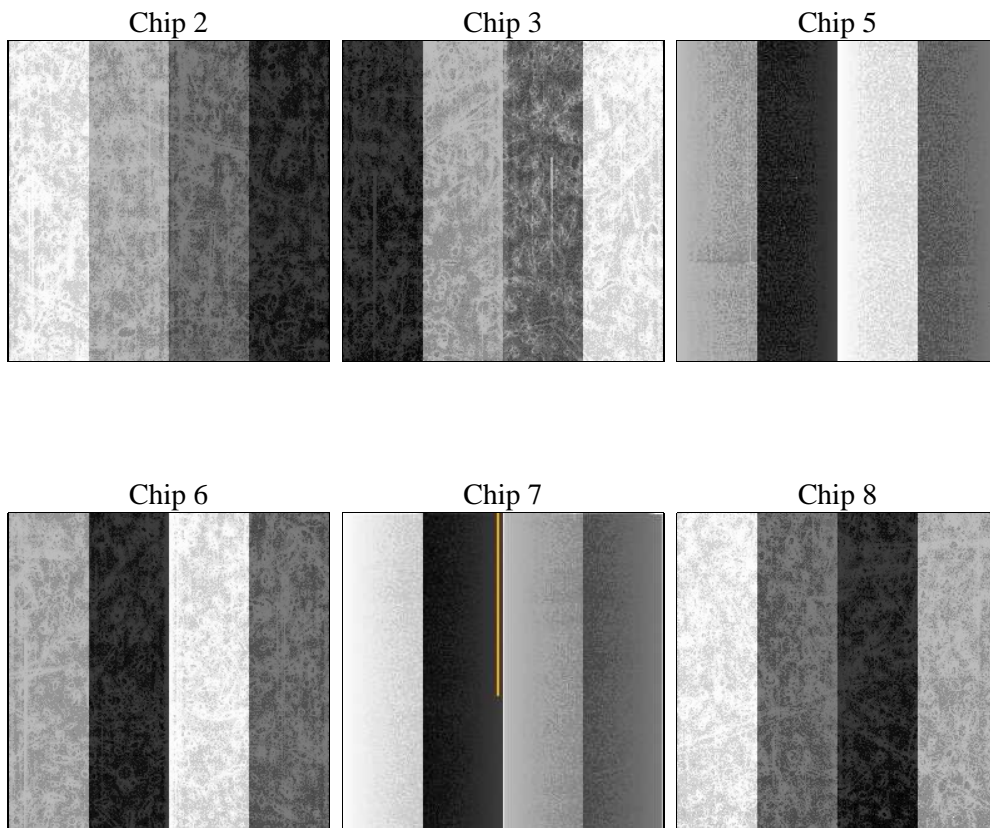
## 2 OBI

### 2.1 OBI

#### 2.1.1 Images



#### 2.1.2 Bias



### 2.1.3 Parameters

obi_num	0	Obi number	sched_exp_time	7500.000000	[s] Scheduled observation exposure time
ascdsver	8.4.5	Processing system revision	ontime	7548.5811088085	Sum of GTIs [s]
caldsver	4.5.0	&#160	ontime2	7548.6221488118	Sum of GTIs [s]
date	2012-06-28T20:02:50	Date and time of file creation	ontime3	7545.2169985771	Sum of GTIs [s]
revision	2	Processing version of data	ontime5	7548.5400688052	Sum of GTIs [s]
			ontime6	7548.4990288019	Sum of GTIs [s]
			ontime7	7548.5811088085	Sum of GTIs [s]
			ontime8	7548.4169487953	Sum of GTIs [s]
			l1events	396040	Number of level 1 events

### 2.1.4 Events

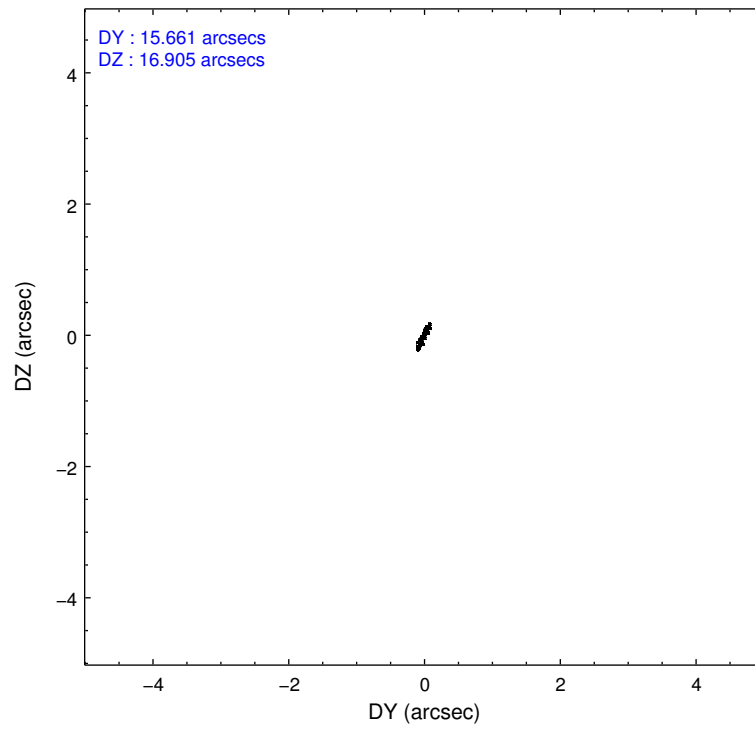
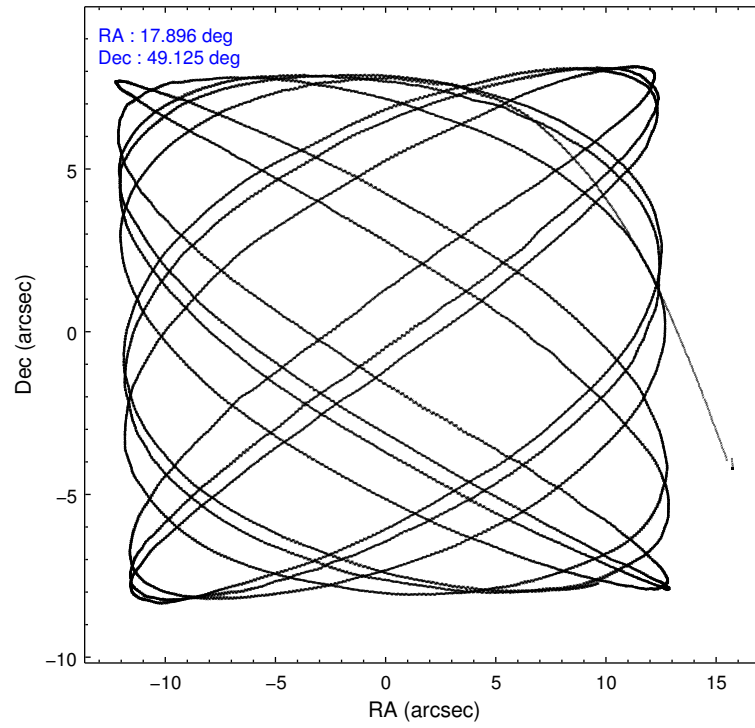
	ccd 2	ccd 3	ccd 5	ccd 6	ccd 7	ccd 8		ccd 2	ccd 3	ccd 5	ccd 6	ccd 7	ccd 8
level 1 events	57482	53125	87219	56017	68945	73252	grade 0 events	2074	1898	4442	2165	3052	6132
rejected events	51488	47717	44462	49828	37399	53657		3%	3%	5%	3%	4%	8%
rejected %	89%	89%	50%	88%	54%	73%	grade 1 events	30	34	153	23	83	66
								0%	0%	0%	0%	0%	0%
							grade 2 events	1462	1204	13199	1403	6426	4458
								2%	2%	15%	2%	9%	6%
							grade 3 events	624	605	1659	651	2819	2051
								1%	1%	1%	1%	4%	2%
							grade 4 events	633	533	1506	631	2839	1968
								1%	1%	1%	1%	4%	2%
							grade 5 events	2214	2461	6603	2536	7102	3677
								3%	4%	7%	4%	10%	5%
							grade 6 events	1208	1176	21997	1346	16436	4993
								2%	2%	25%	2%	23%	6%
							grade 7 events	49237	45214	37660	47262	30188	49907
								85%	85%	43%	84%	43%	68%

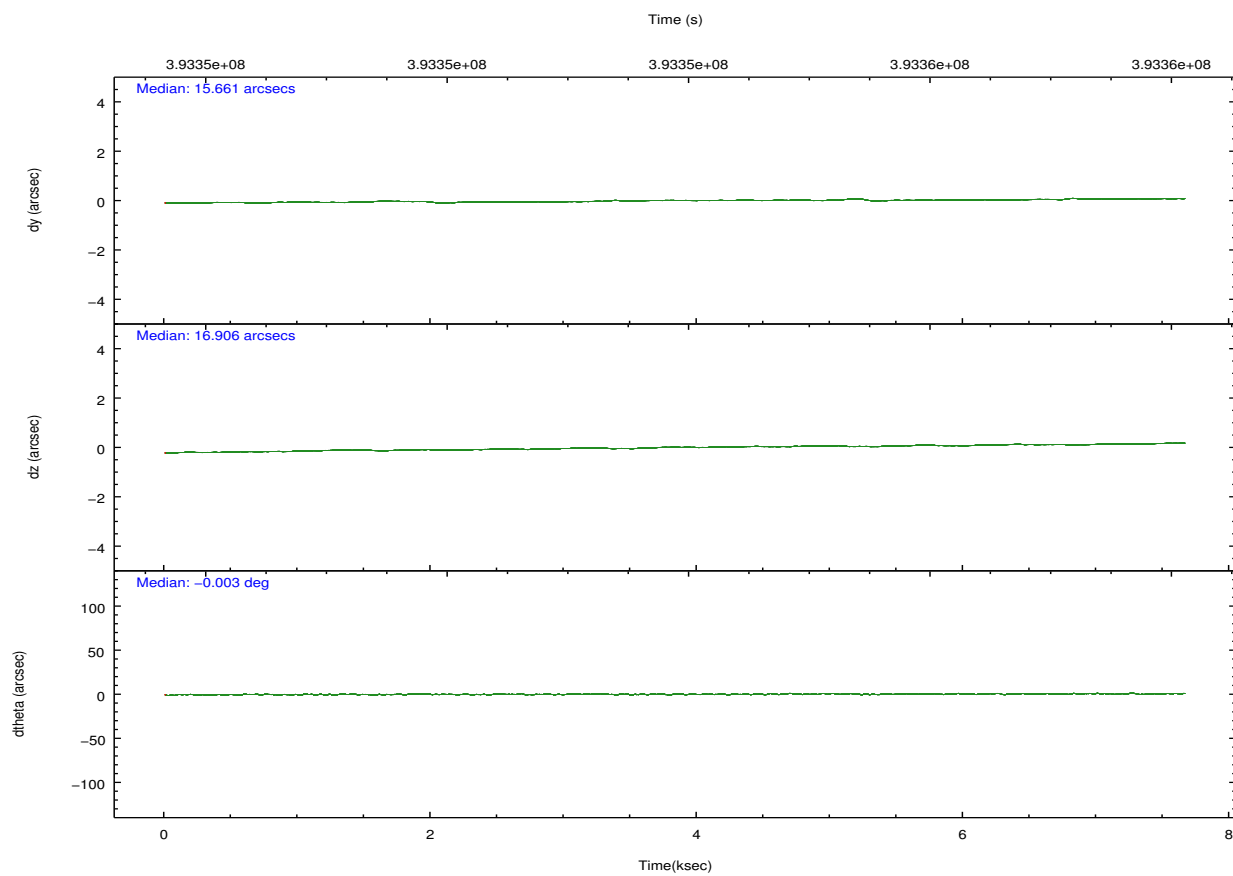
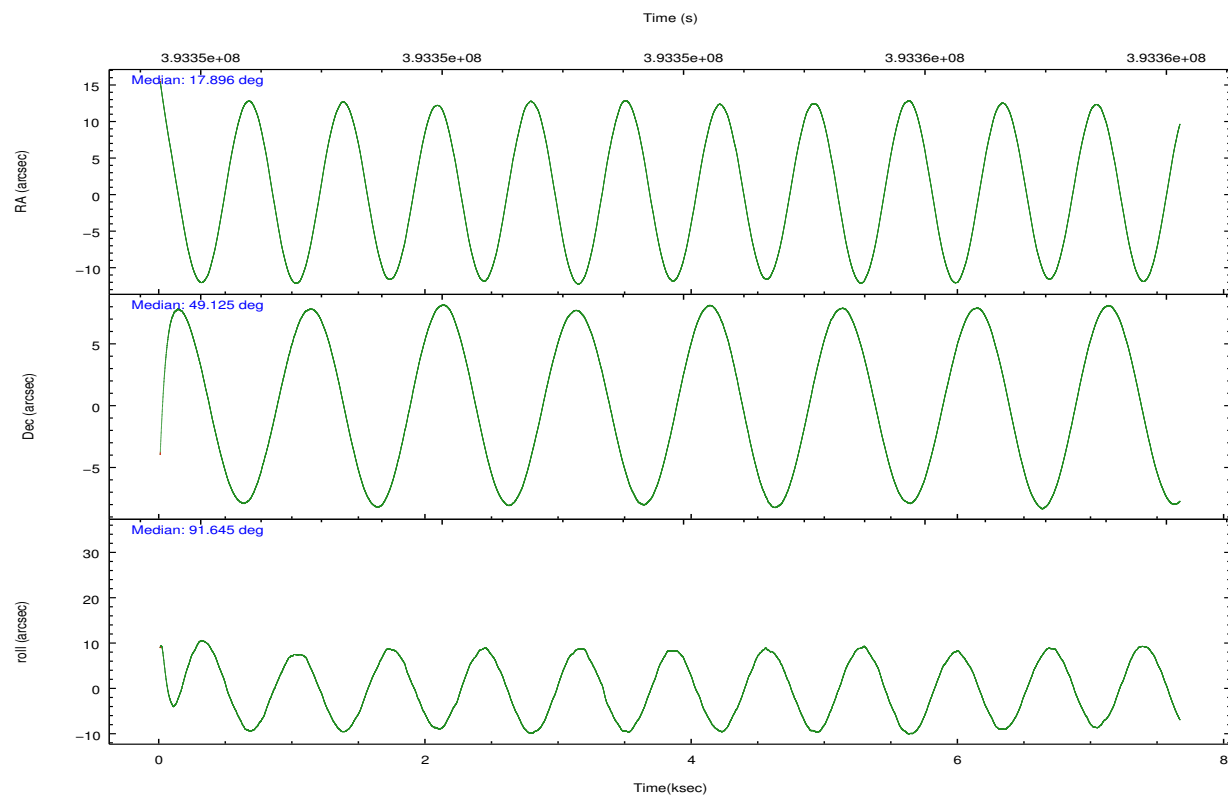


## 2.2 Compared Parameters

Parameter	Planned	Actual	Parameter	Planned	Actual
Instrument	ACIS	ACIS	Obspar format version number	7	7
Detector	ACIS-235678	ACIS-235678	Obspar file type	PREDICTED	ACTUAL
Grating	NONE	NONE	Obspar update status	NONE	UPDATED
Data mode	VFAINT	VFAINT	CCD I0 on	N	N
Observation mode	POINTING	POINTING	CCD I1 on	N	N
[deg] Pointing RA	17.917907	17.89546622610693	CCD I2 on	O2	Y
[deg] Pointing Dec	49.102171	49.12525551892777	CCD I3 on	Y	Y
[deg] Pointing Roll	91.483915	91.65753579595047	CCD S0 on	N	N
[mm] SIM focus pos	-0.684267	-0.6828225247311905	CCD S1 on	Y	Y
[mm] SIM defocus	0	0.001444936568705701	CCD S2 on	Y	Y
[mm] SIM translation stage pos	-190.132523	-190.1400660498719	CCD S3 on	Y	Y
[mm] SIM translation stage offset	0	0.00754346686406393	CCD S4 on	O1	Y
[s] Observation start time (MET)	393350219.184000	393348962.85603	CCD S5 on	N	N
Observation start date	2010-06-19T15:55:53	2010-06-19T15:36:02	Number of optional ACIS chips dropped	0	0
[s] Observation end time (MET)	393357719.184000	393358781.33153	On-chip summing requested	N	N
Observation end date	2010-06-19T18:00:53	2010-06-19T18:19:41	Subarray requested	NONE	NONE
Read mode	TIMED	TIMED	Alternating exposures requested	N	N
			[s] Primary exposure time	0.000000	3.2

## 2.3 Aspect



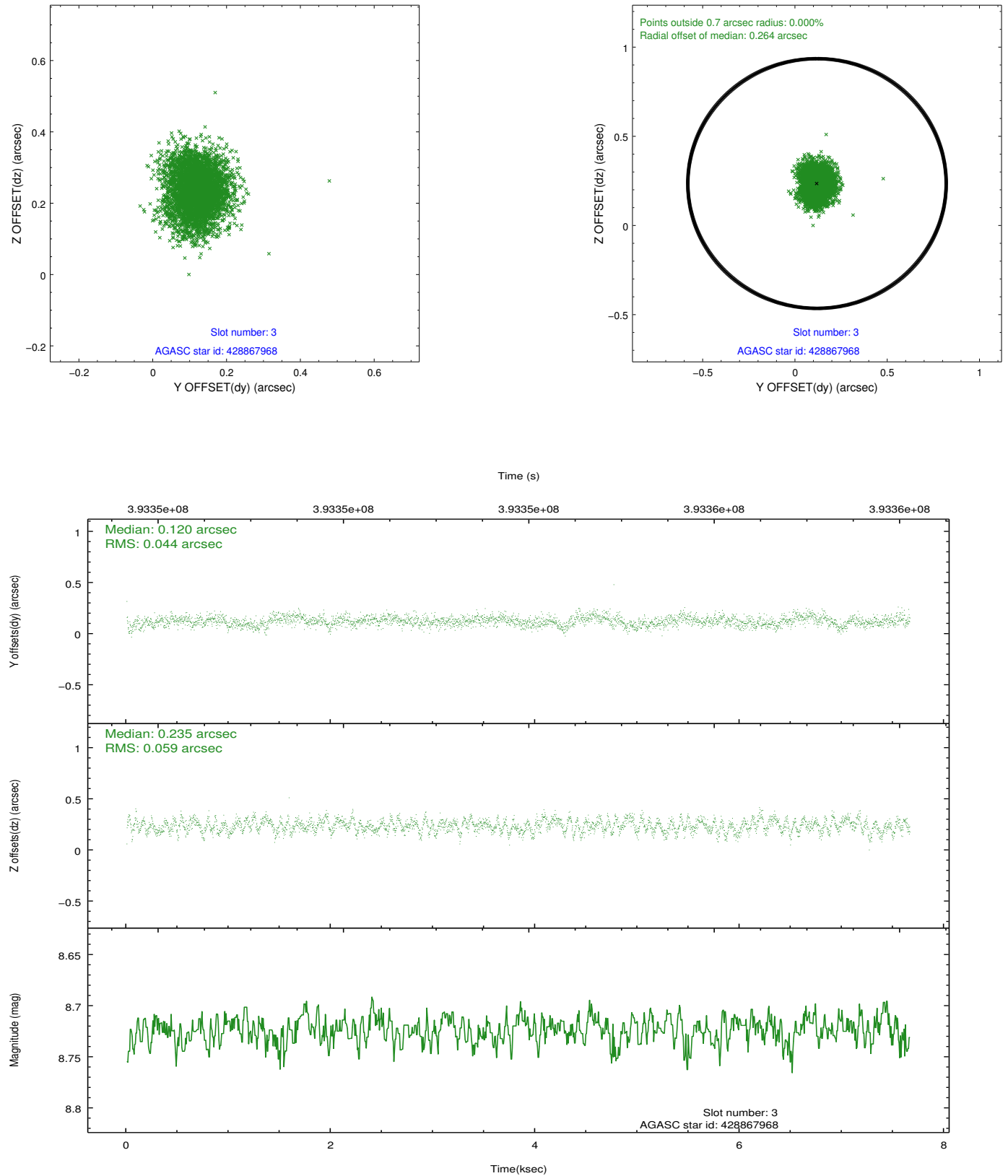


### Slot Statistics

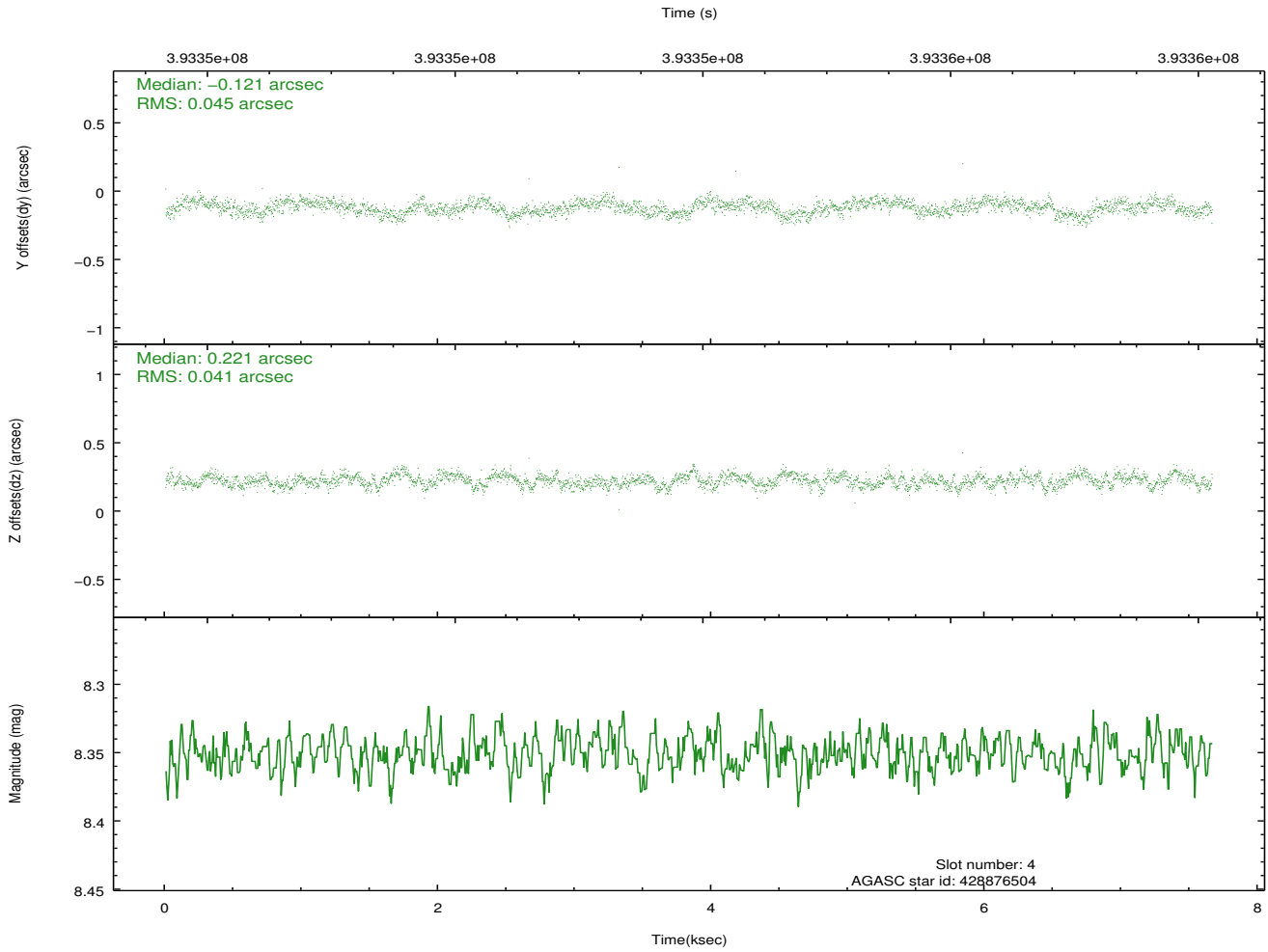
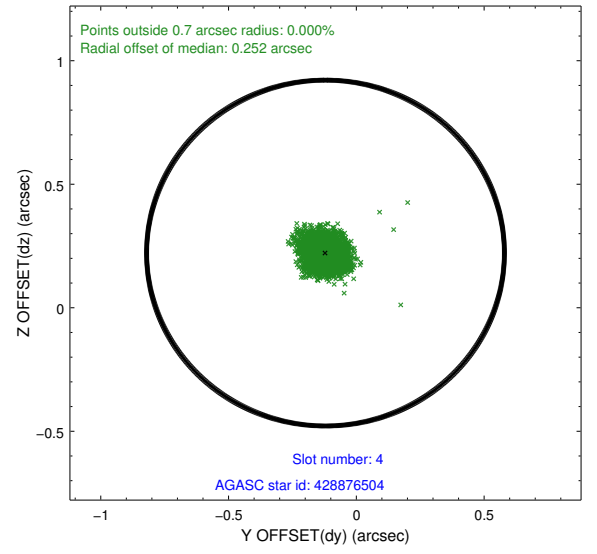
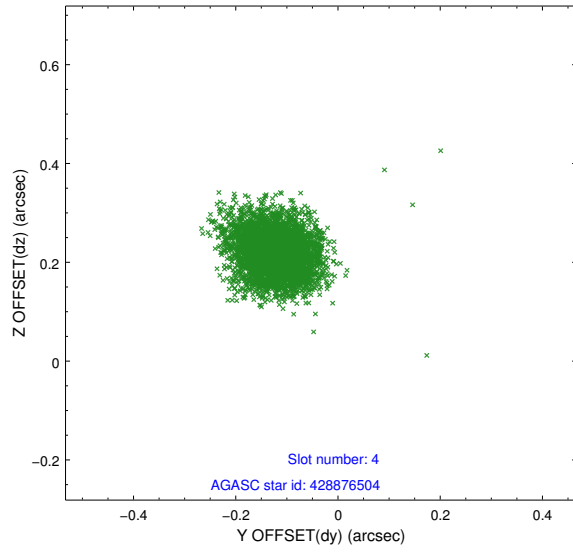
slot	status	id	mag	n_pts	med_dy	med_dz	dr1	dr2	ra	dec	mean_y	mean_z
0	FID	ACIS-S-2	6.83	1869	-0.077	-0.029	0.007	0.012	0.000000	0.000000	-768.75	-1738.33
1	FID	ACIS-S-4	6.91	1869	0.180	0.045	0.006	0.011	0.000000	0.000000	2144.48	169.40
2	FID	ACIS-S-5	6.95	1869	-0.134	-0.007	0.007	0.012	0.000000	0.000000	-1820.66	163.93
3	GUIDE	428867968	8.72	3729	0.120	0.235	0.078	0.126	18.452747	48.786972	-1162.19	-1239.08
4	GUIDE	428876504	8.35	3736	-0.121	0.221	0.064	0.102	18.481323	49.238945	462.98	-1336.64
5	GUIDE	428877376	7.80	3738	-0.064	0.175	0.078	0.123	18.649157	49.429647	1143.06	-1742.45
6	GUIDE	428878536	7.61	3738	0.101	0.027	0.068	0.112	17.465902	49.053858	-142.82	1070.17
7	GUIDE	428878528	7.77	3737	-0.039	-0.656	0.056	0.090	16.908228	49.032921	-172.02	2387.94

## 2.4 Star Slots

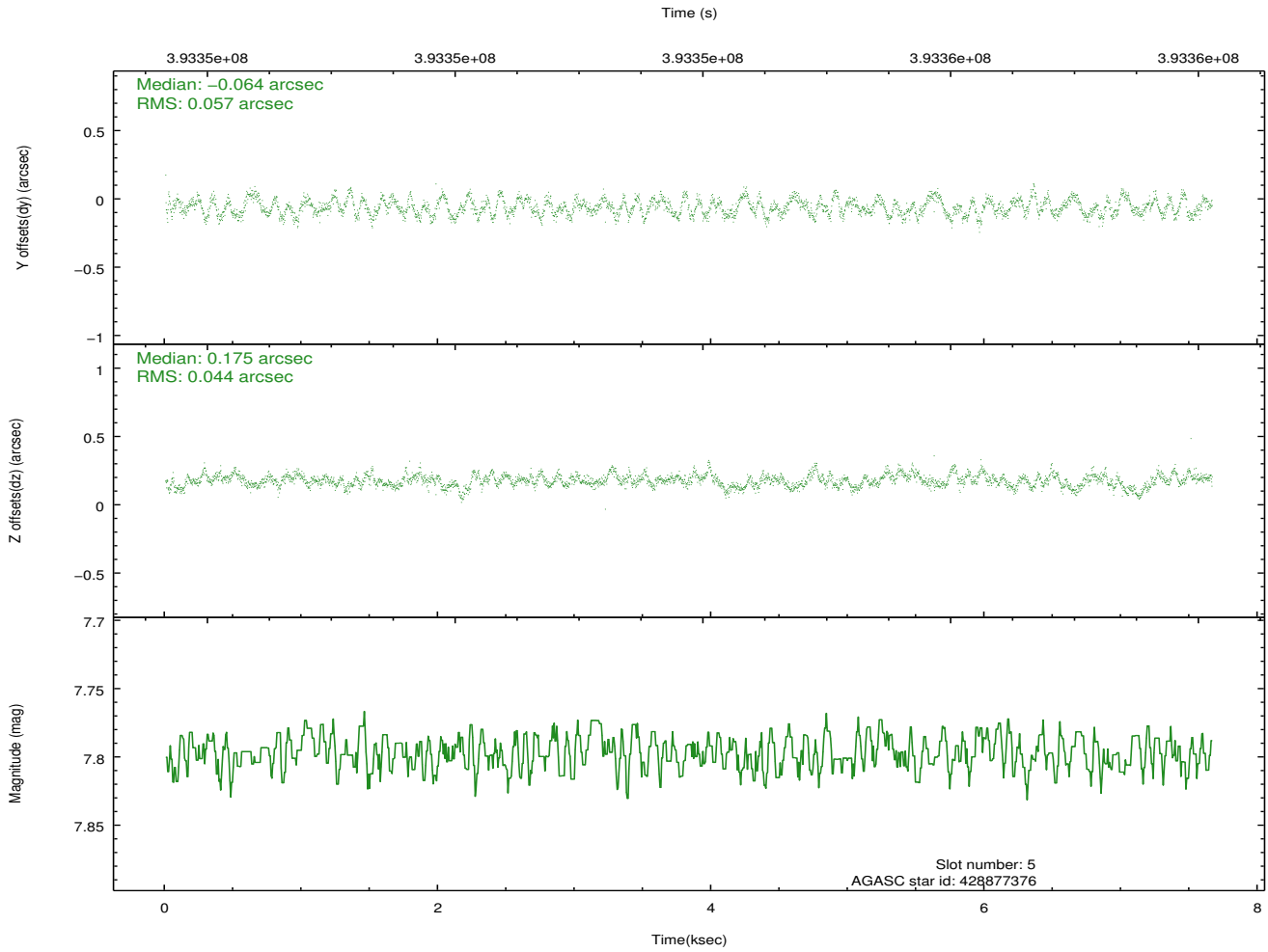
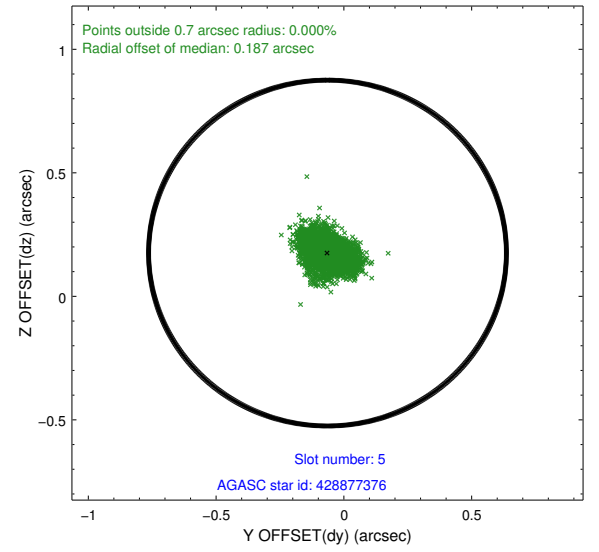
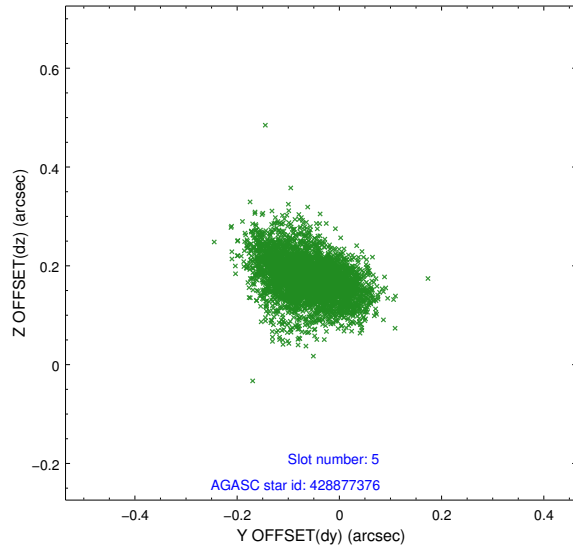
### 2.4.1 Slot 3



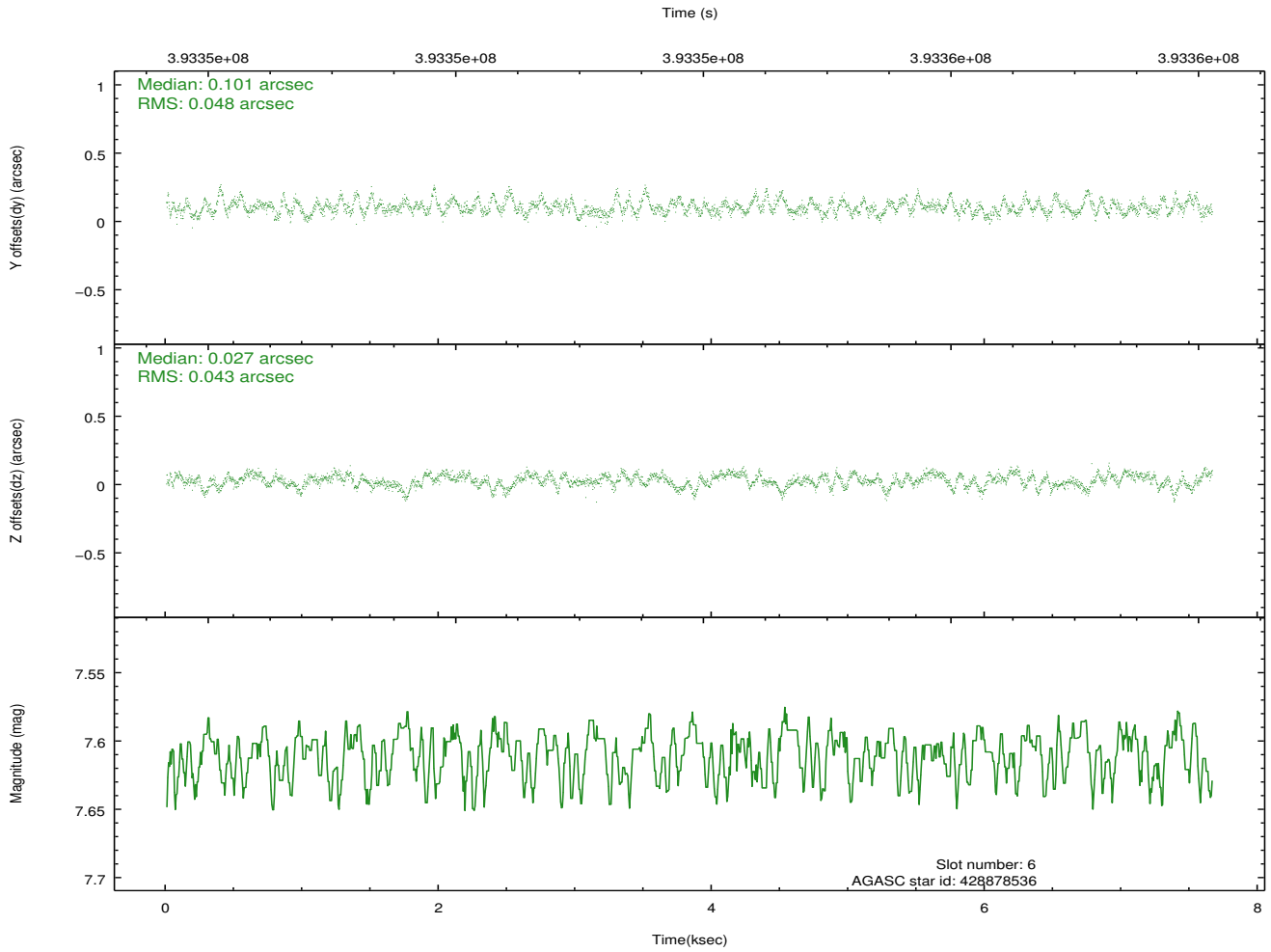
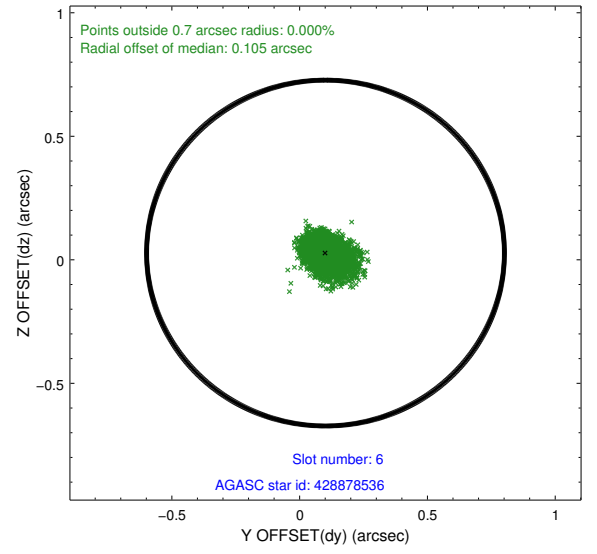
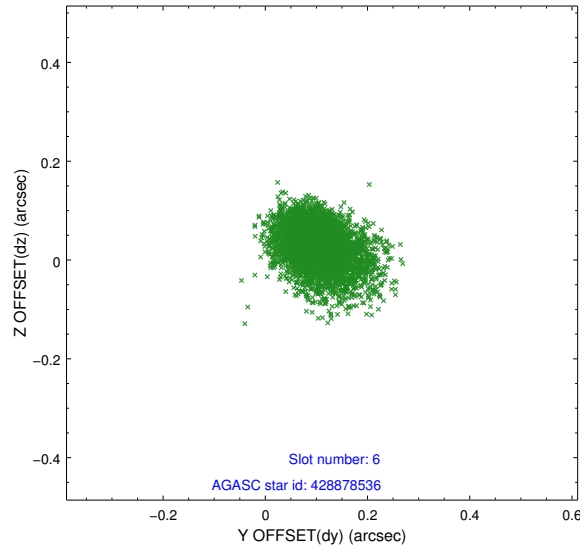
## 2.4.2 Slot 4



### 2.4.3 Slot 5

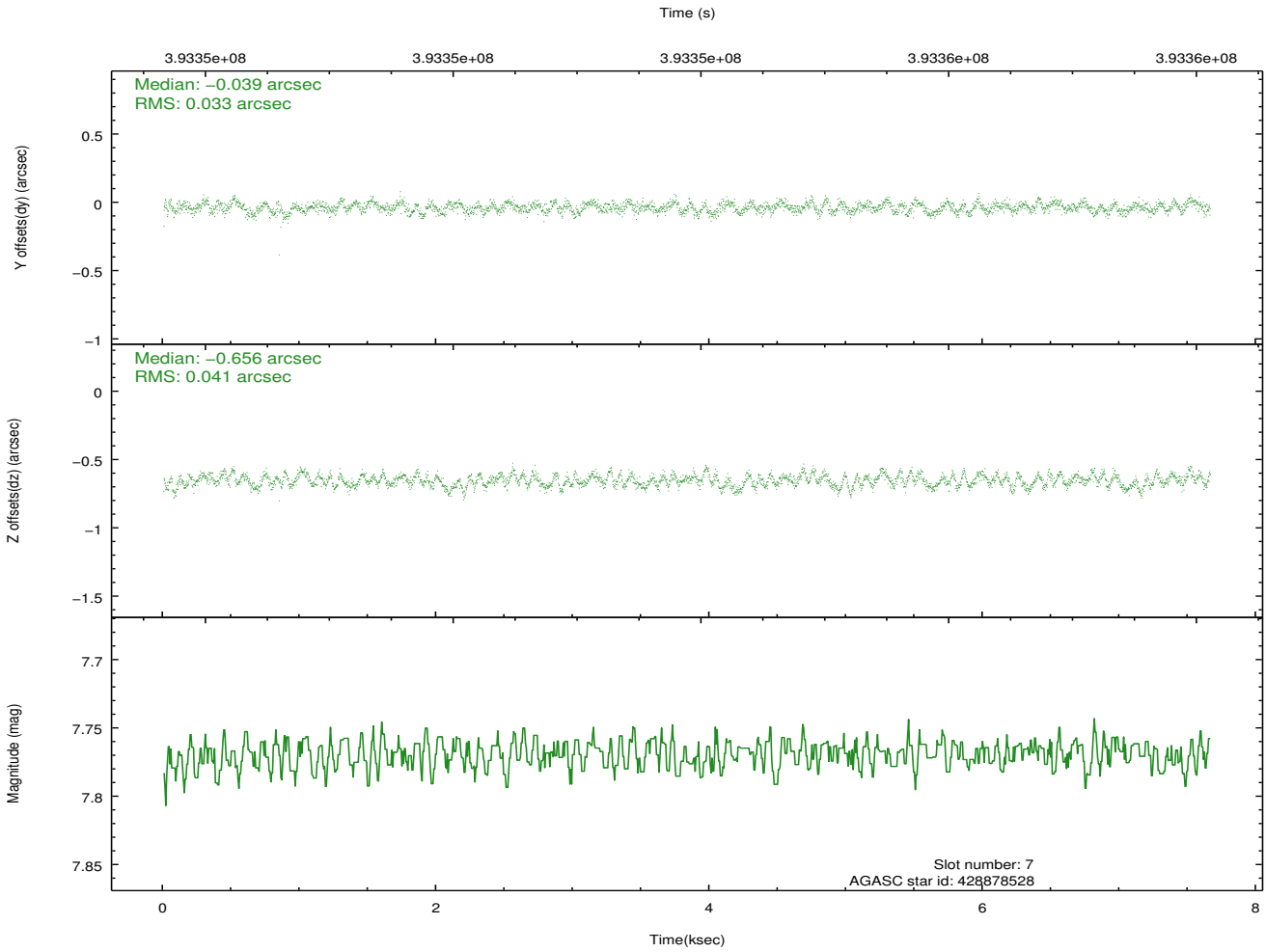
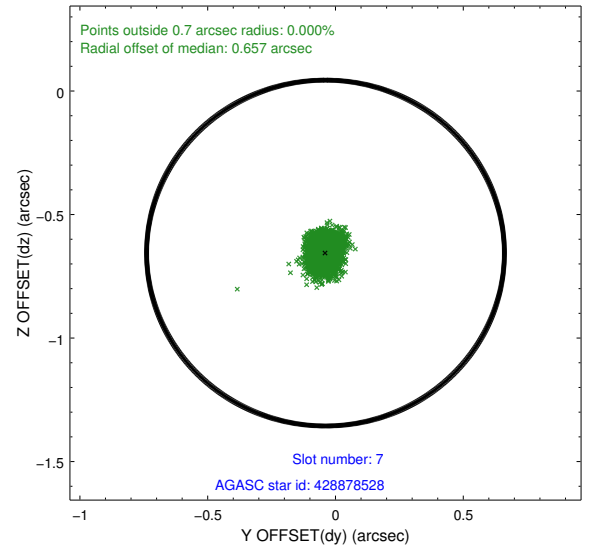
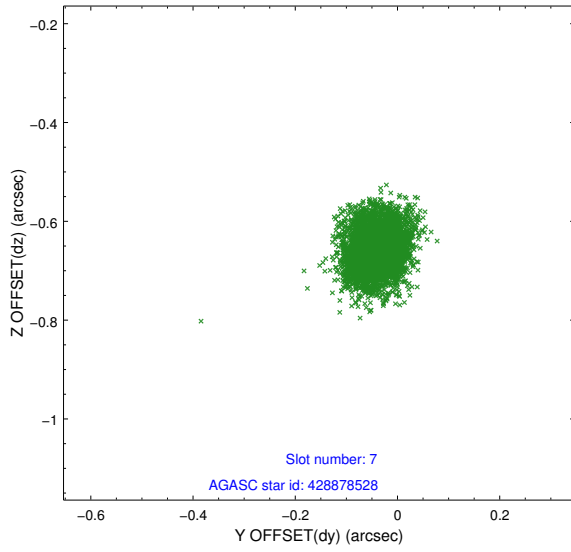


## 2.4.4 Slot 6



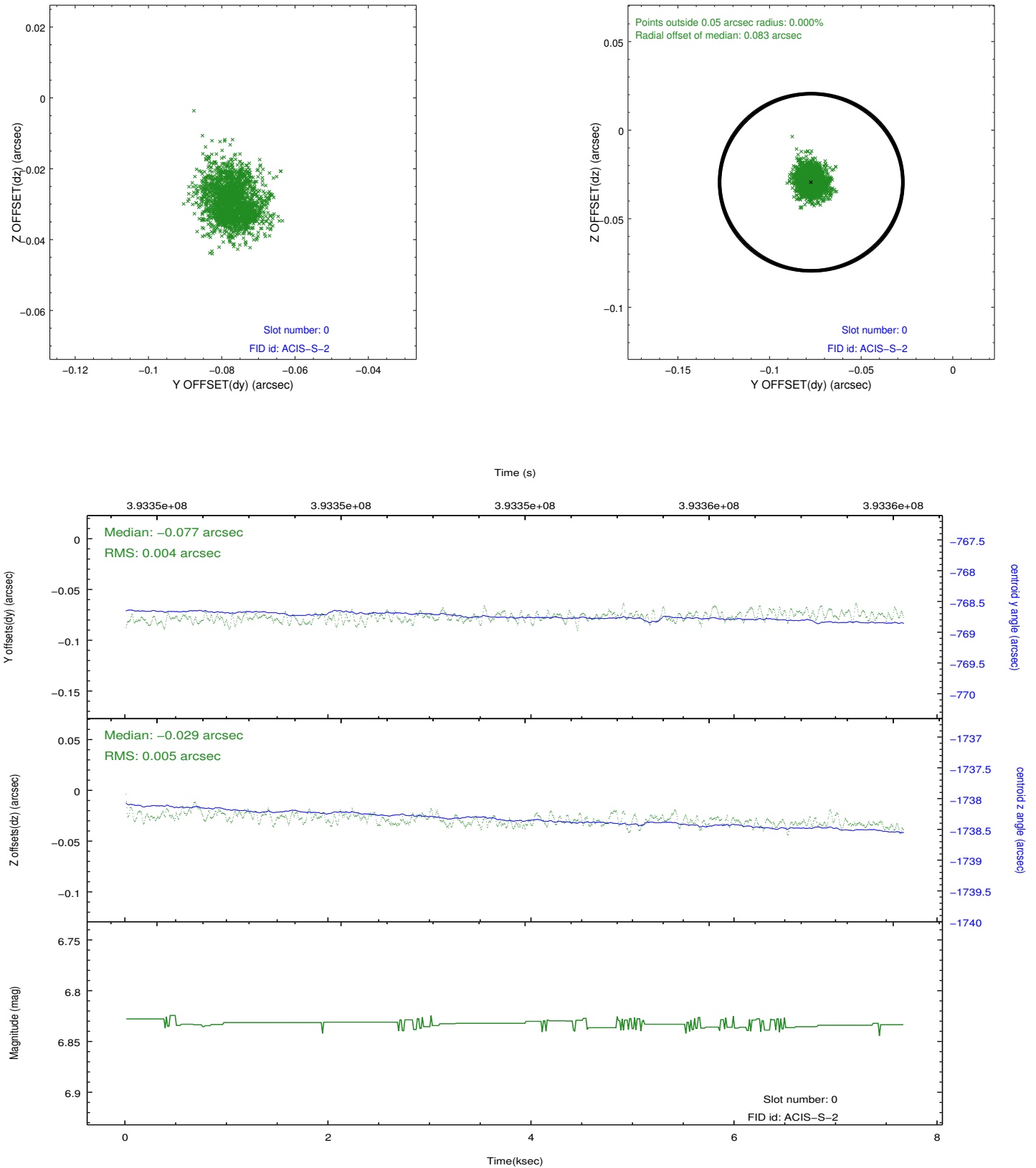


## 2.4.5 Slot 7

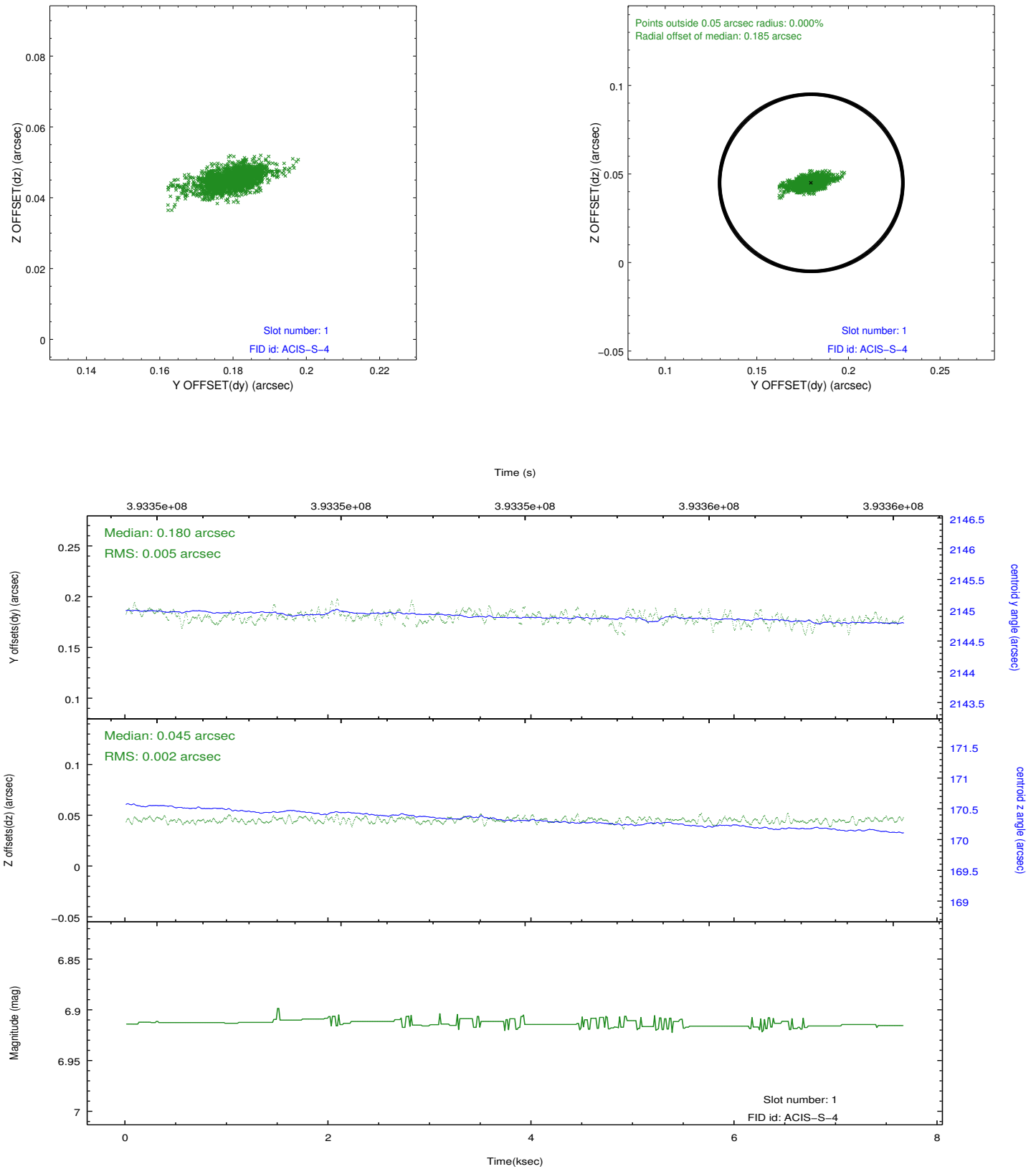


## 2.5 FID Slots

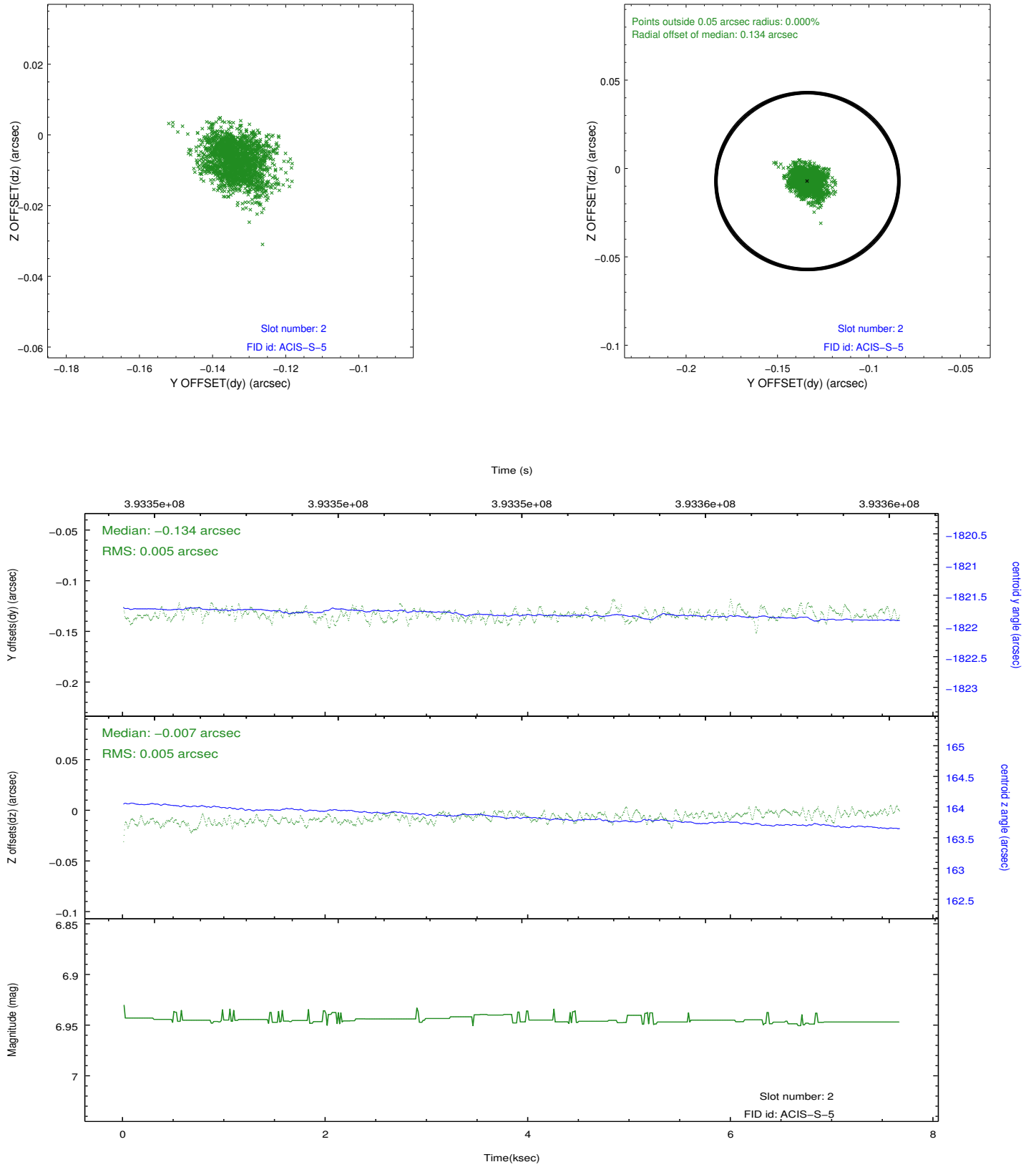
### 2.5.1 Slot 0



## 2.5.2 Slot 1



### 2.5.3 Slot 2



## **A Summary**

### **A.1 Status**

V&V Scientist	Jen Lauer
V&V Date (YYYY-MM-DD)	2012.07.05
V&V Edition	1
V&V Disposition and Status	OK
V&V Charge Time	7.5485811035633

### **A.2 Comments**