

V&V Reference Report

L2 ASCDS Version : 8.4.5

Observation 13160 - L2 Version 2
Chandra X-Ray Center

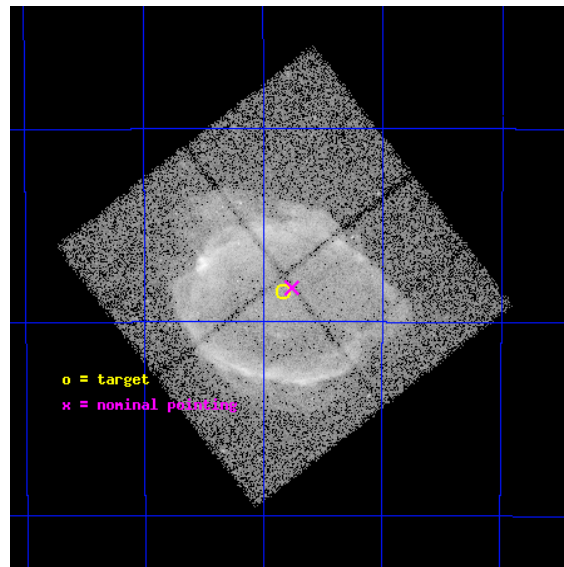
L2 Processing Date : Jul 5 2012

Contents

1	Front	2
2	OBI	3
2.1	OBI	3
2.1.1	Images	3
2.1.2	Bias	3
2.1.3	Parameters	4
2.1.4	Events	4
2.2	Compared Parameters	5
2.3	Aspect	6
2.4	Star Slots	9
2.4.1	Slot 3	9
2.4.2	Slot 4	10
2.4.3	Slot 5	11
2.4.4	Slot 6	12
2.4.5	Slot 7	13
2.5	FID Slots	14
2.5.1	Slot 0	14
2.5.2	Slot 1	15
2.5.3	Slot 2	16
A	Summary	17
A.1	Status	17
A.2	Comments	17

1 Front

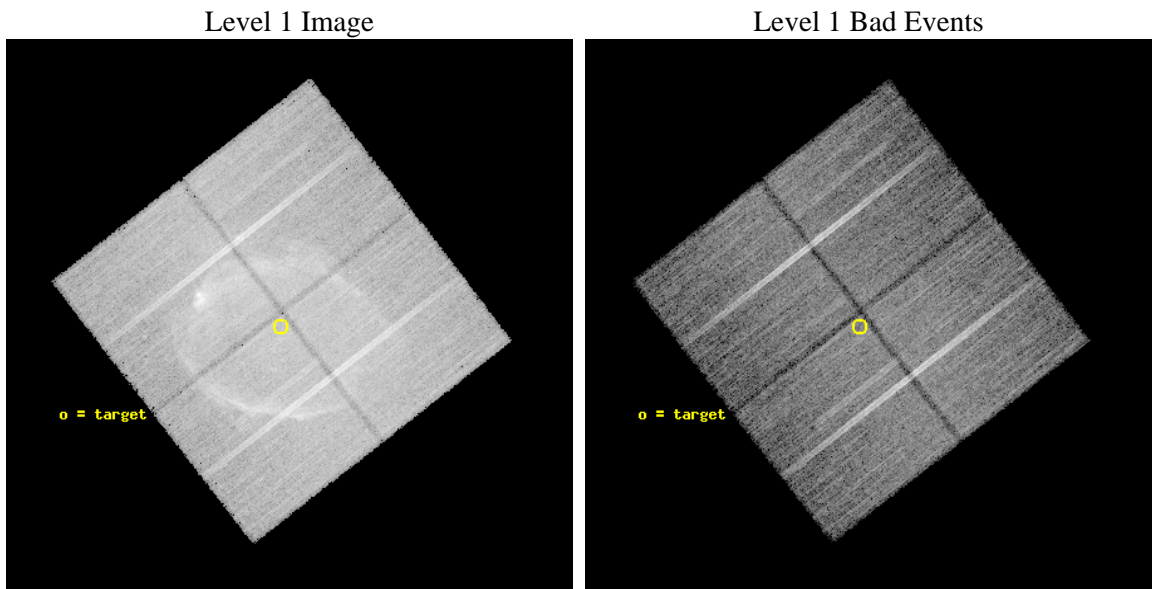
seq_num	501186	Sequence number
obs_id	13160	Observation id
title	A Detailed Study of the Type Ia Supernova Remnant G299.2-2.9	Propo
observer	DR. Sangwook Park	Principal investigator
object	G299.2-2.9	Source name
dtcycle	0	
cycle	P	events from which exps? Prim/Second/Both
ra_targ	183.708333	Observer's specified target RA [deg]
dec_targ	-65.473611	Observer's specified target Dec [deg]
ra_nom	183.69009700614	Nominal RA [deg]
dec_nom	-65.470769811156	Nominal Dec [deg]
roll_nom	142.19208938603	Nominal Roll [deg]
revision	2	Processing version of data
ontime	35405.059311986	Sum of GTIs [s]
livetime	34942.466147249	Livetime [s]
ontime0	35401.918321848	Sum of GTIs [s]
ontime1	35398.777391136	Sum of GTIs [s]
ontime2	35408.200272322	Sum of GTIs [s]
ontime3	35405.059311986	Sum of GTIs [s]
l2events	231821	Number of level 2 events



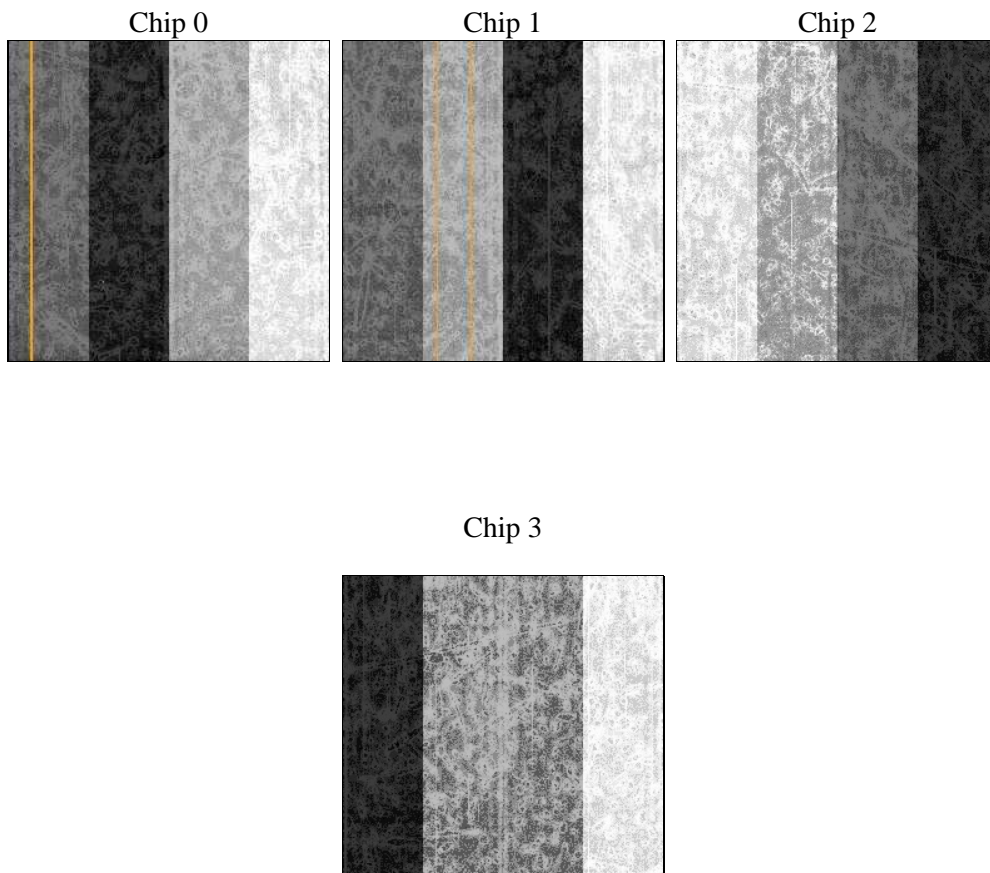
2 OBI

2.1 OBI

2.1.1 Images



2.1.2 Bias



2.1.3 Parameters

obi_num	0	Obi number	sched_exp_time	35345.908000	[s] Scheduled observation exposure time
ascdsver	8.4.5	Processing system revision	ontime	35405.059311986	Sum of GTIs [s]
caldsver	4.5.0	 	ontime0	35401.918321848	Sum of GTIs [s]
date	2012-07-05T22:07:40	Date and time of file creation	ontime1	35398.777391136	Sum of GTIs [s]
revision	2	Processing version of data	ontime2	35408.200272322	Sum of GTIs [s]
			ontime3	35405.059311986	Sum of GTIs [s]
			l1events	1059812	Number of level 1 events

2.1.4 Events

	ccd 0	ccd 1	ccd 2	ccd 3
level 1 events	242409	267514	270842	279047
rejected events	187989	187477	217097	208332
rejected %	77%	70%	80%	74%

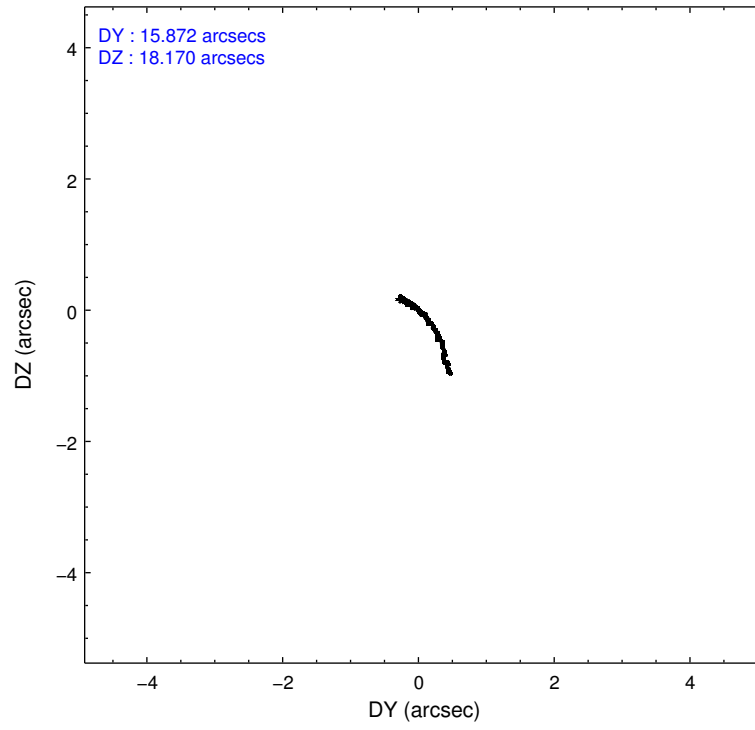
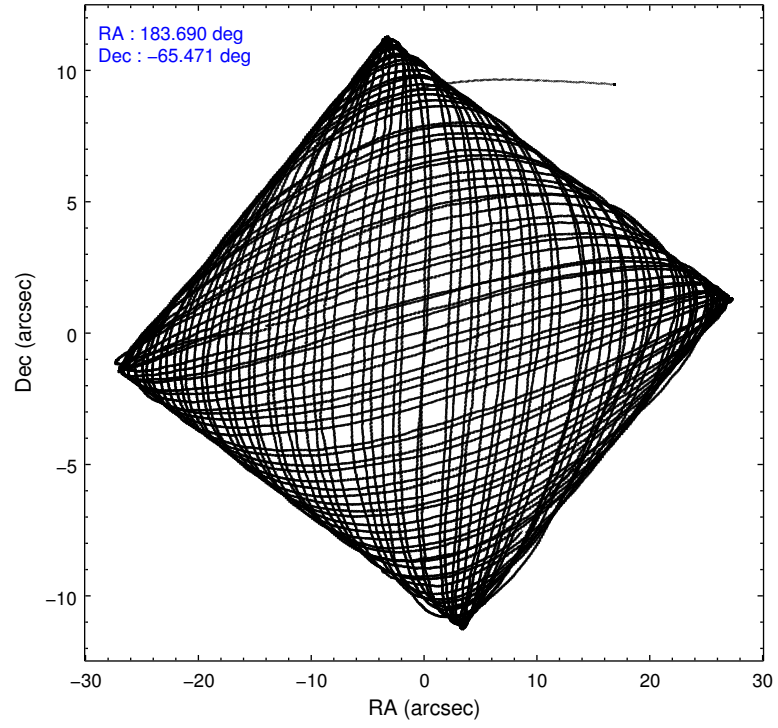
	ccd 0	ccd 1	ccd 2	ccd 3
grade 0 events	34466	56245	34621	50037
	14%	21%	12%	17%
grade 1 events	267	317	326	349
	0%	0%	0%	0%
grade 2 events	8429	10112	8430	8787
	3%	3%	3%	3%
grade 3 events	3267	3816	2974	3407
	1%	1%	1%	1%
grade 4 events	2942	3764	3016	3402
	1%	1%	1%	1%
grade 5 events	8182	8870	7709	9433
	3%	3%	2%	3%
grade 6 events	5325	6118	4716	5094
	2%	2%	1%	1%
grade 7 events	179531	178272	209050	198538
	74%	66%	77%	71%

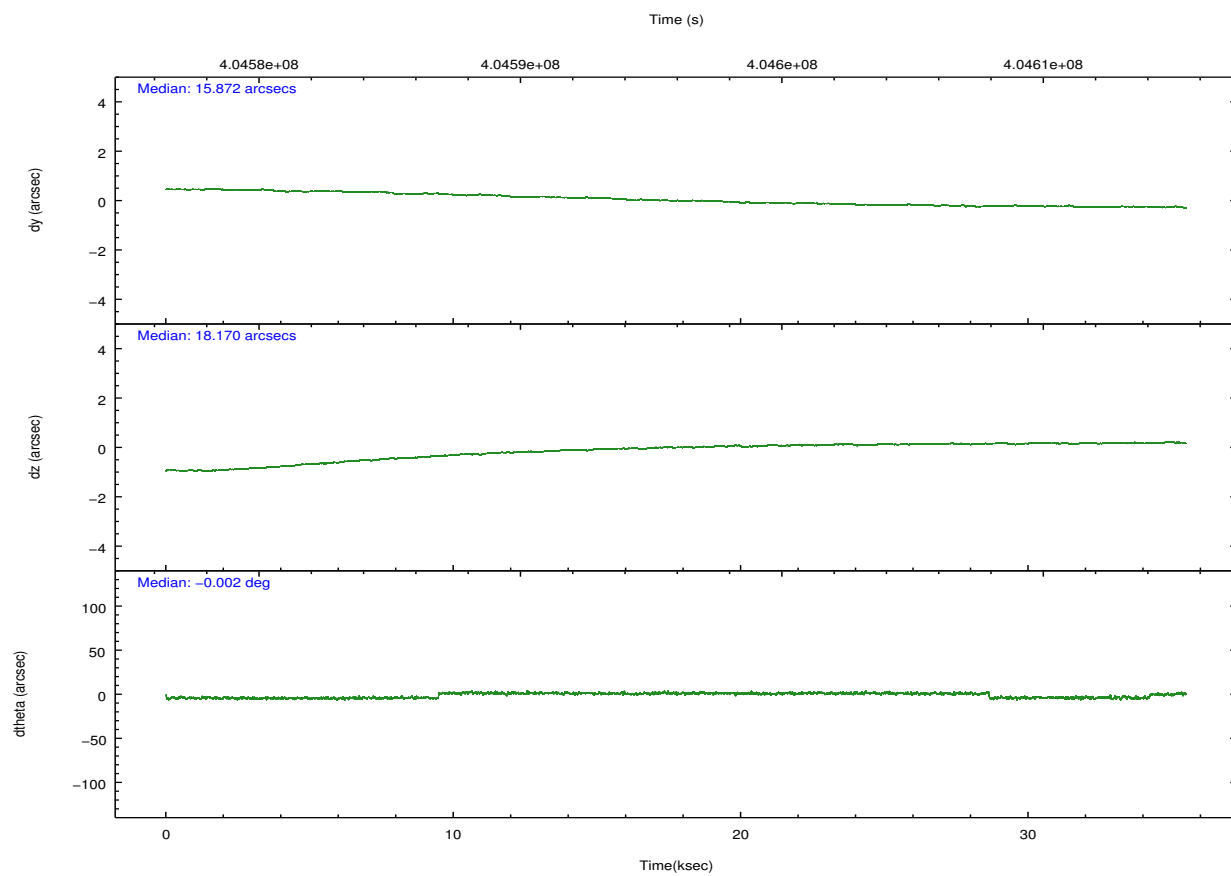
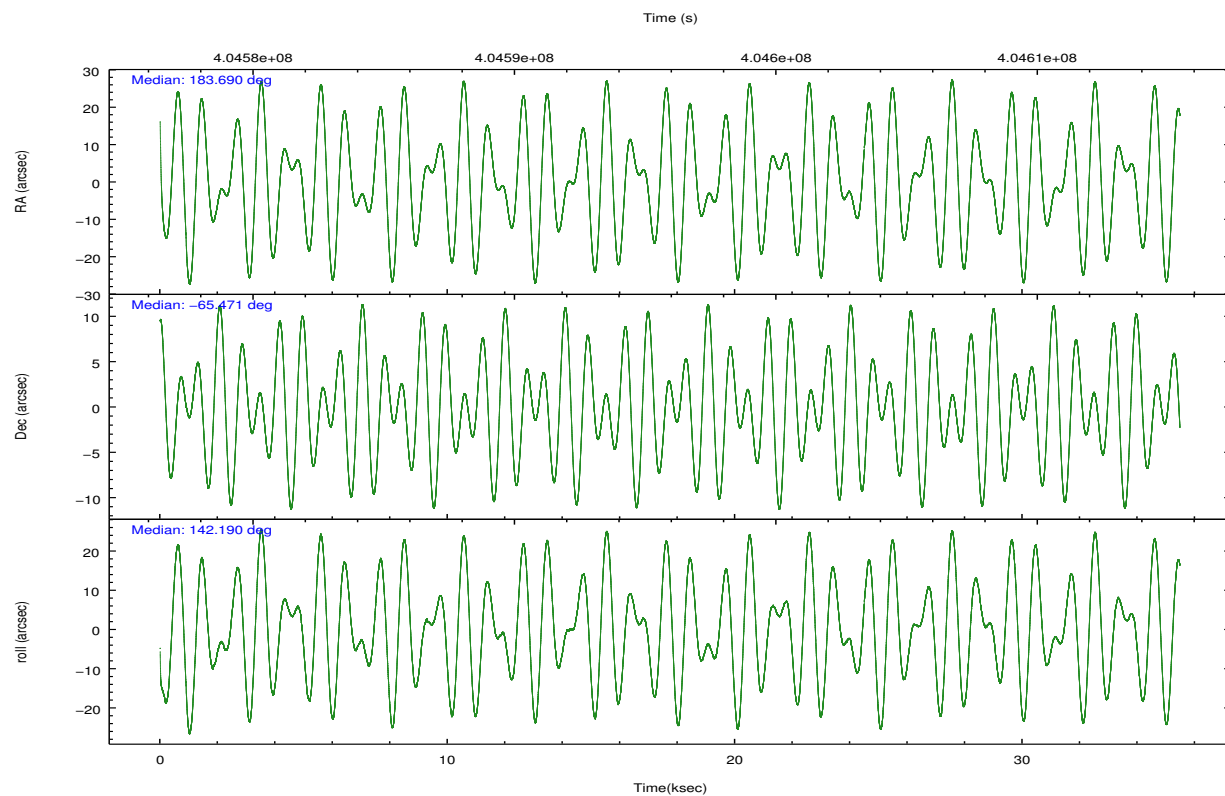
2.2 Compared Parameters

Parameter	Planned	Actual
Instrument	ACIS	ACIS
Detector	ACIS-0123	ACIS-0123
Grating	NONE	NONE
Data mode	VFAINT	VFAINT
Observation mode	POINTING	POINTING
[deg] Pointing RA	183.755765	183.6900970061378
[deg] Pointing Dec	-65.474402	-65.47076981115647
[deg] Pointing Roll	142.043147	142.1920893860347
[mm] SIM focus pos	-0.782348	-0.7809083437167272
[mm] SIM defocus	0	0.001439871863259334
[mm] SIM translation stage pos	-233.592463	-233.5874344608287
[mm] SIM translation stage offset	0	-0.005018542100998502
[s] Observation start time (MET)	404578358.184000	404577046.1063
Observation start date	2010-10-27T14:51:32	2010-10-27T14:30:46
[s] Observation end time (MET)	404613704.184000	404613940.4707
Observation end date	2010-10-28T00:40:38	2010-10-28T00:45:40
Read mode	TIMED	TIMED

Parameter	Planned	Actual
Obspar format version number	7	7
Obspar file type	PREDICTED	ACTUAL
Obspar update status	NONE	UPDATED
Number of optional ACIS chips dropped	0	0
On-chip summing requested	N	N
Subarray requested	NONE	NONE
Alternating exposures requested	N	N
[s] Primary exposure time	0.000000	3.1

2.3 Aspect



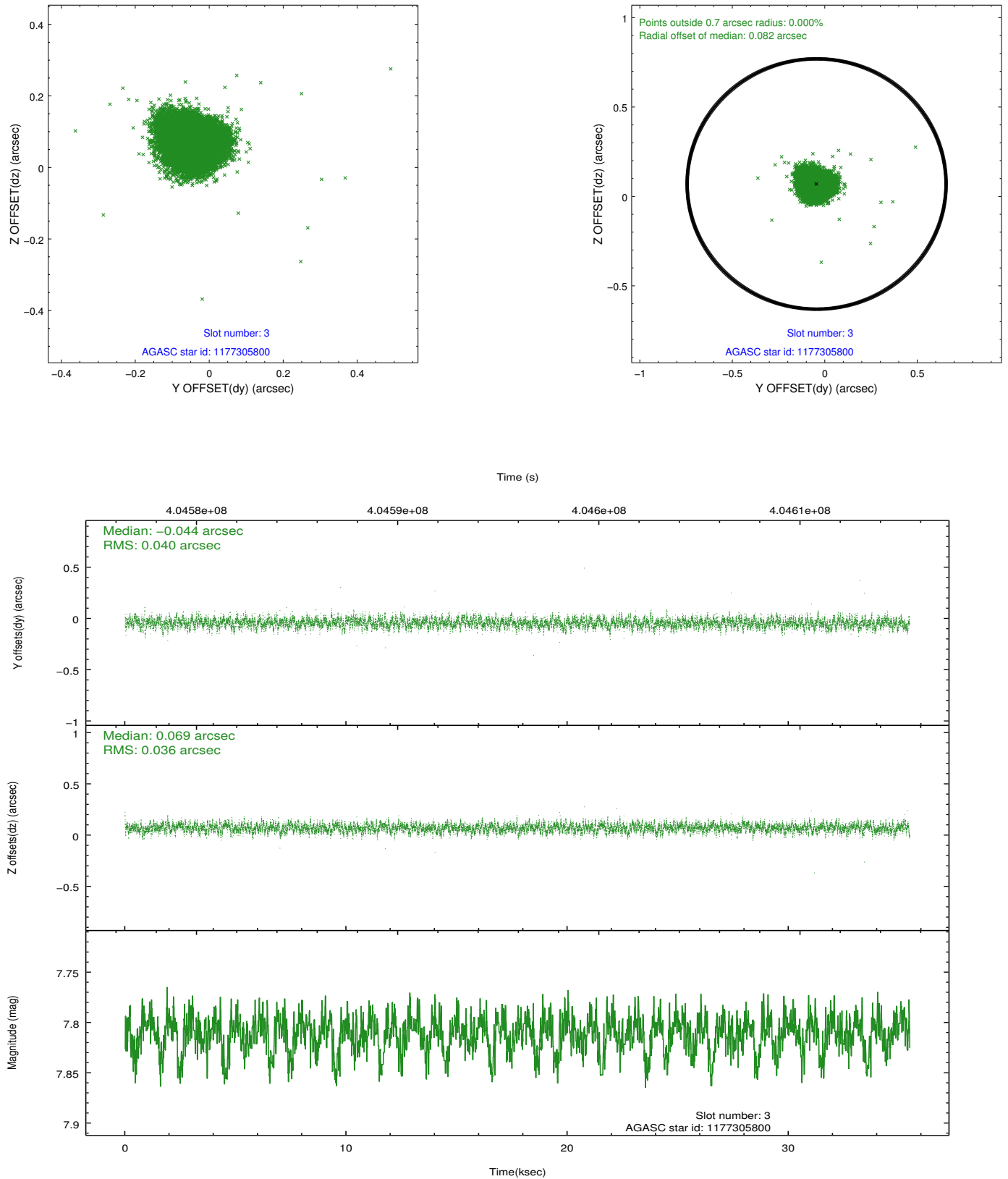


Slot Statistics

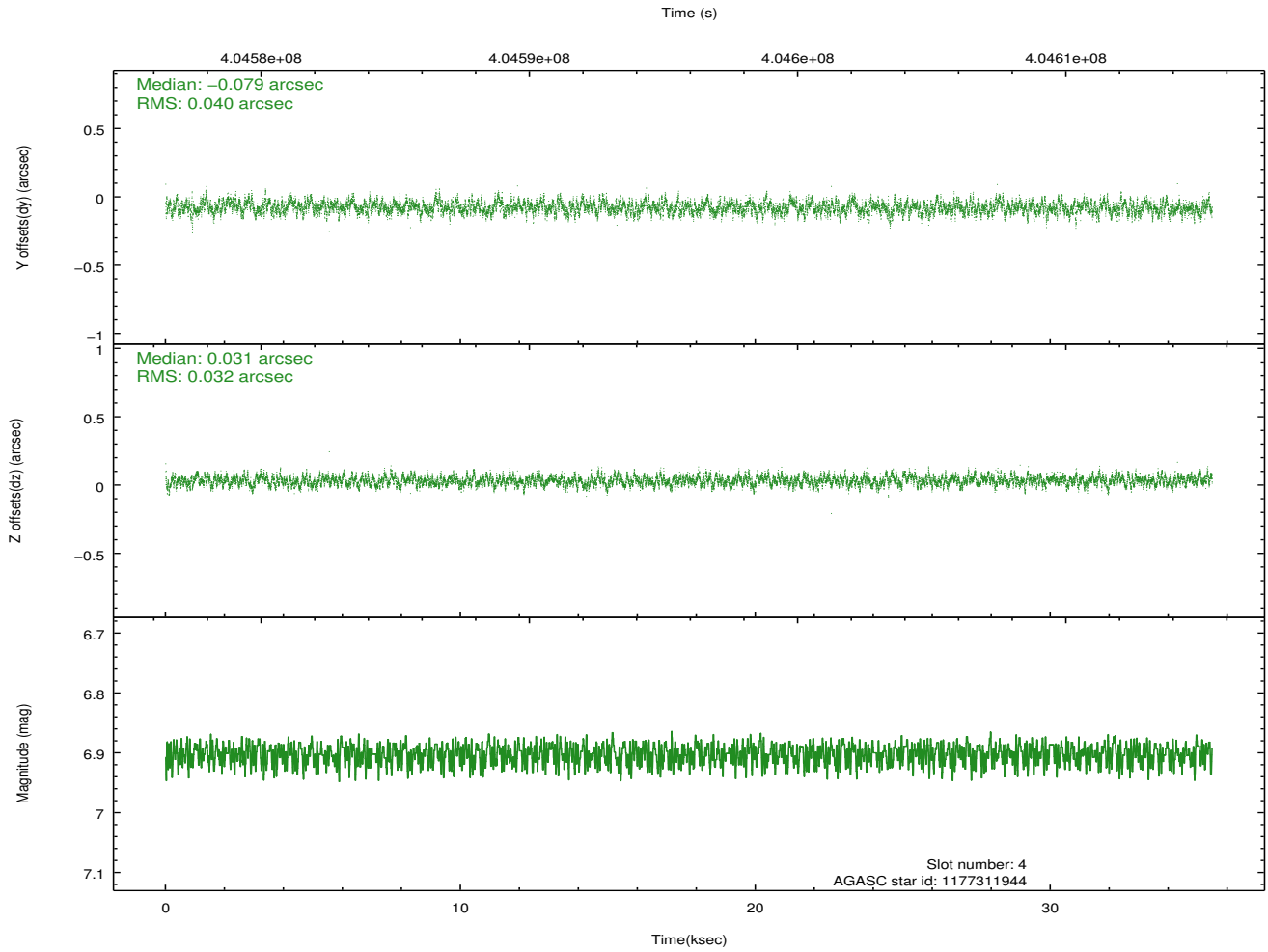
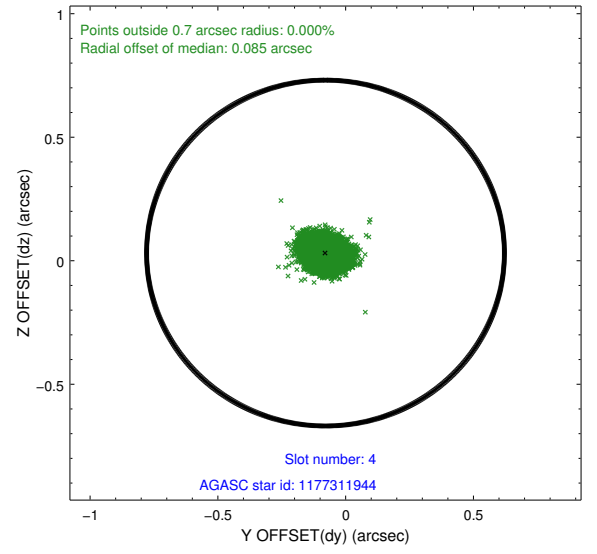
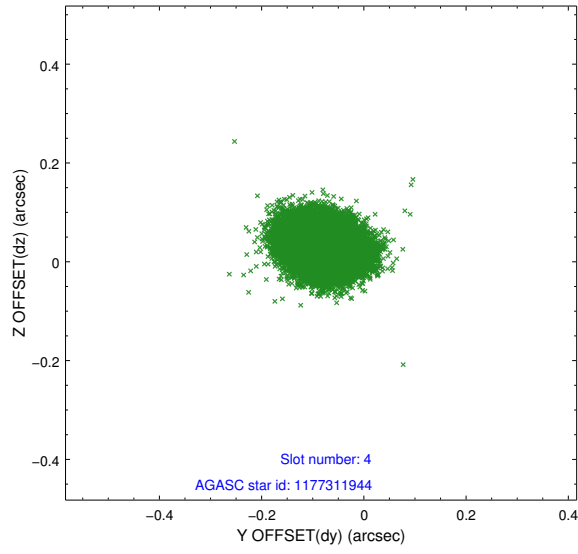
slot	status	id	mag	n_pts	med_dy	med_dz	dr1	dr2	ra	dec	mean_y	mean_z
0	FID	ACIS-I-1	7.02	8654	-0.055	0.021	0.028	0.063	0.000000	0.000000	923.46	-841.67
1	FID	ACIS-I-2	6.94	8655	-0.127	-0.053	0.011	0.019	0.000000	0.000000	-770.68	-848.21
2	FID	ACIS-I-4	6.96	8650	0.082	0.101	0.024	0.055	0.000000	0.000000	2143.46	1058.21
3	GUIDE	1177305800	7.81	17306	-0.044	0.069	0.057	0.092	182.814616	-65.027625	2110.69	-379.72
4	GUIDE	1177311944	6.90	17309	-0.079	0.031	0.055	0.088	182.934554	-64.948787	2145.73	-715.05
5	GUIDE	1177290368	8.80	17228	0.036	-0.073	0.071	0.120	181.636651	-65.492541	2422.67	2040.00
6	GUIDE	1177434688	8.70	17302	0.076	0.064	0.081	0.128	185.679282	-65.435625	-2210.17	-1845.56
7	GUIDE	1177955240	7.96	17308	0.009	-0.089	0.050	0.082	184.346620	-65.724487	-1245.71	175.13

2.4 Star Slots

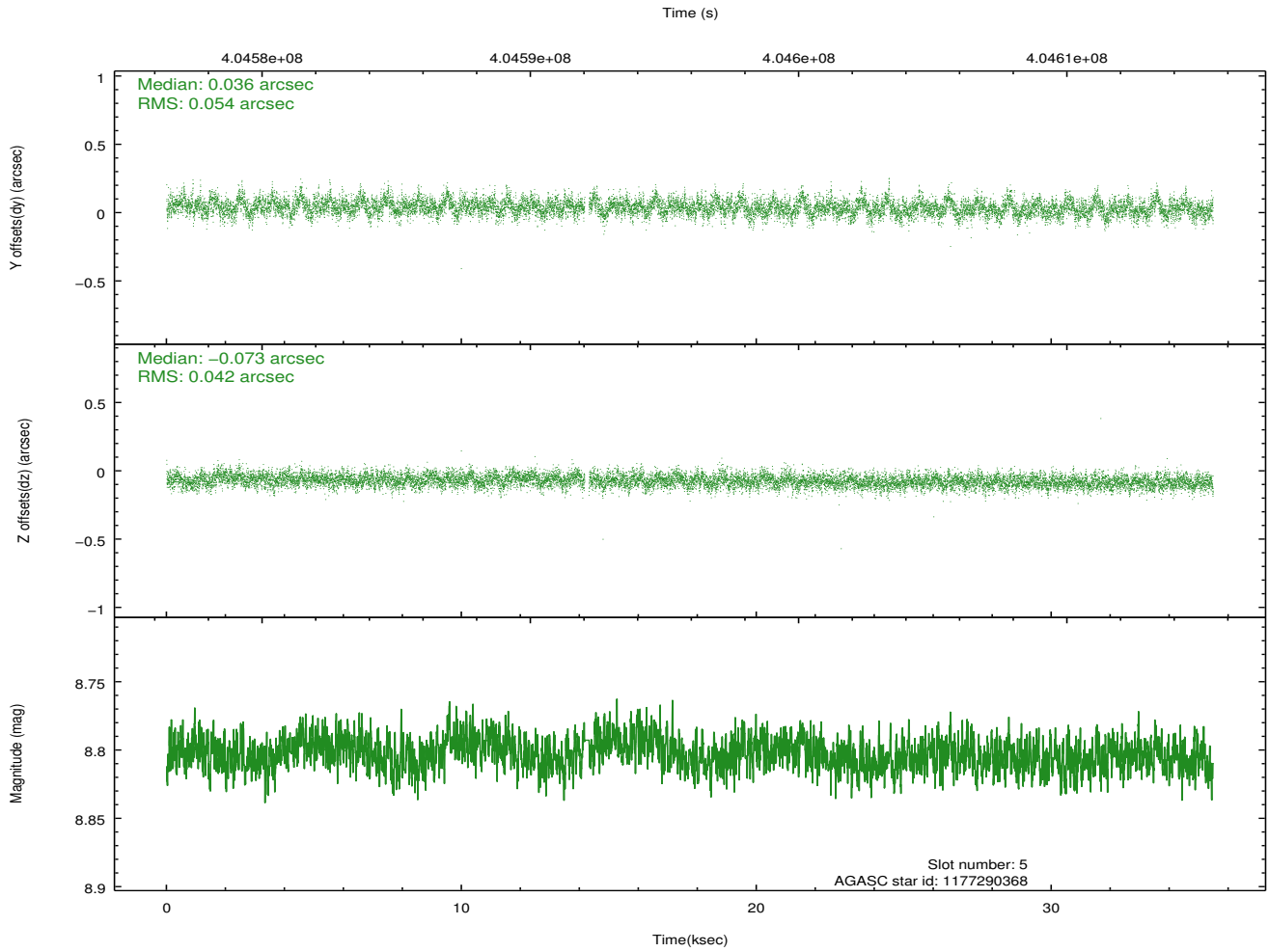
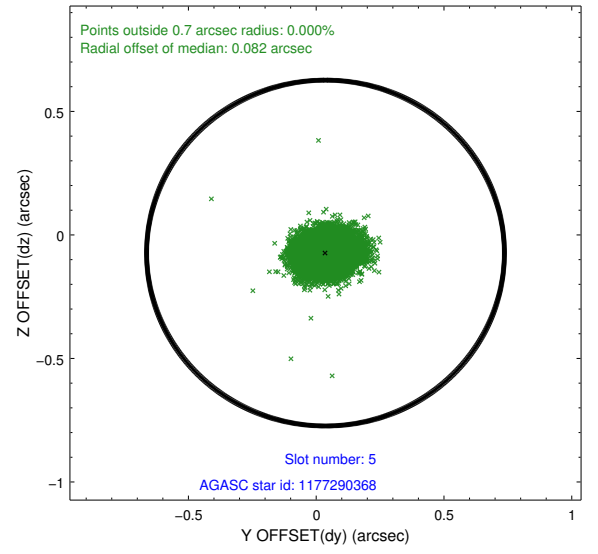
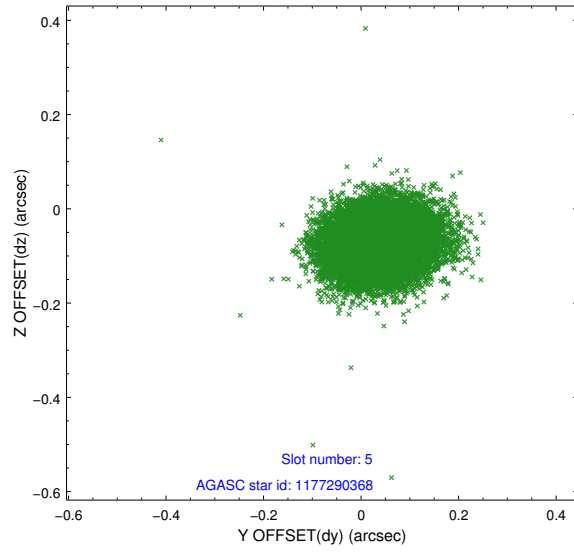
2.4.1 Slot 3



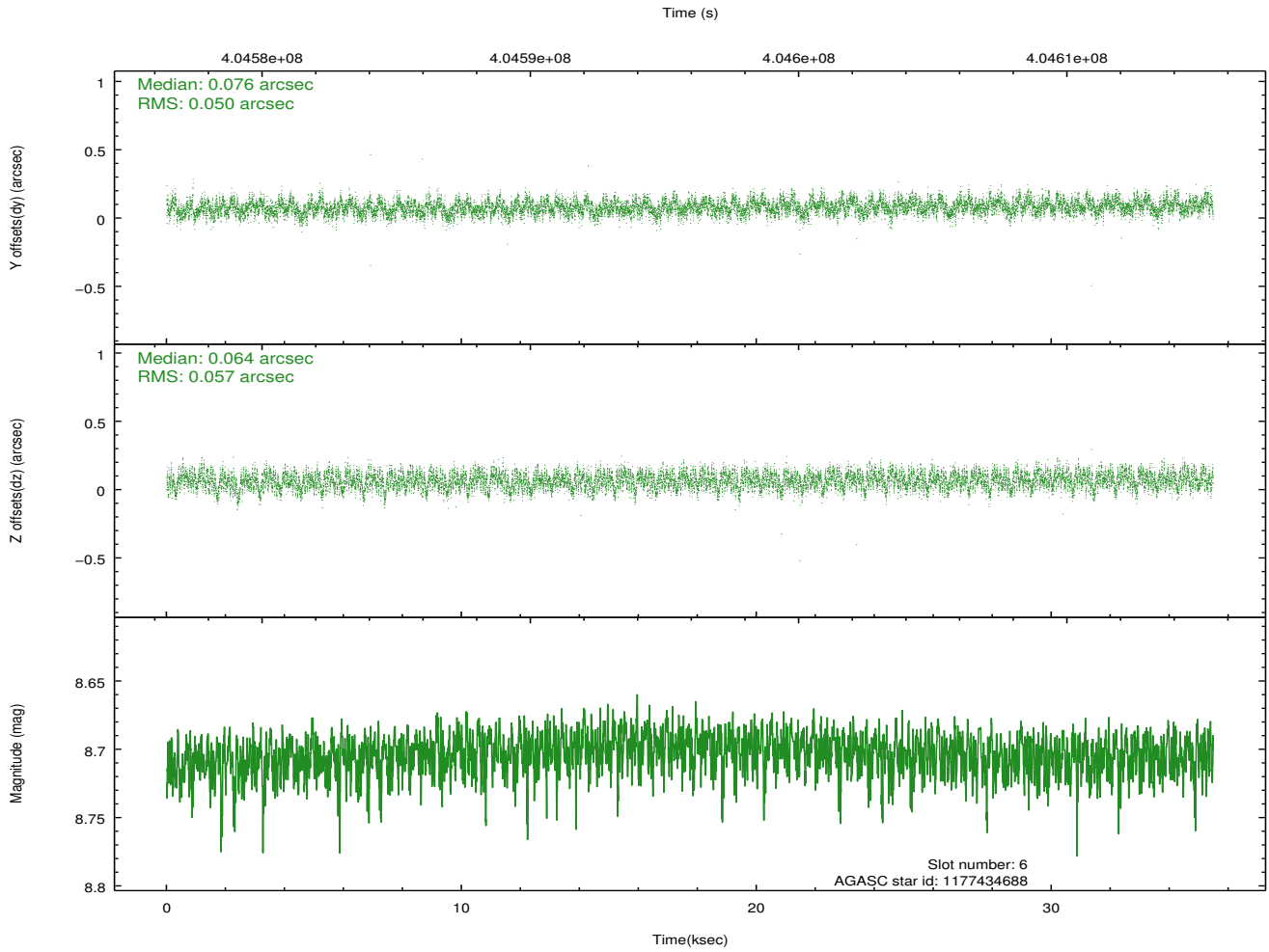
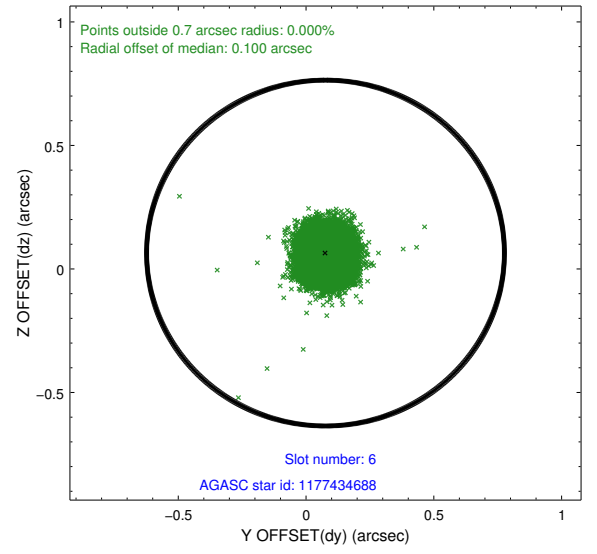
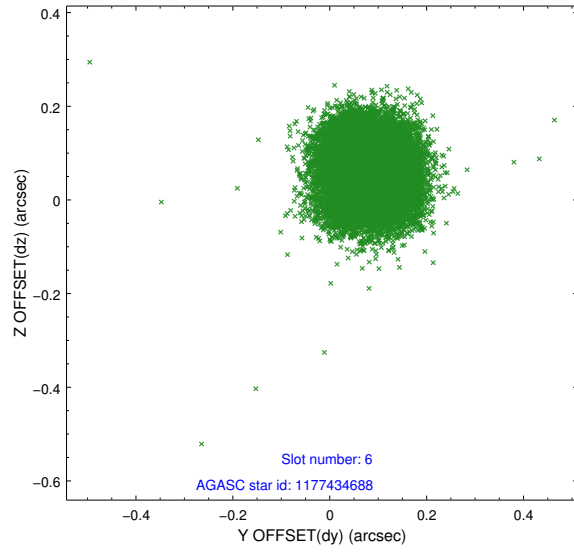
2.4.2 Slot 4



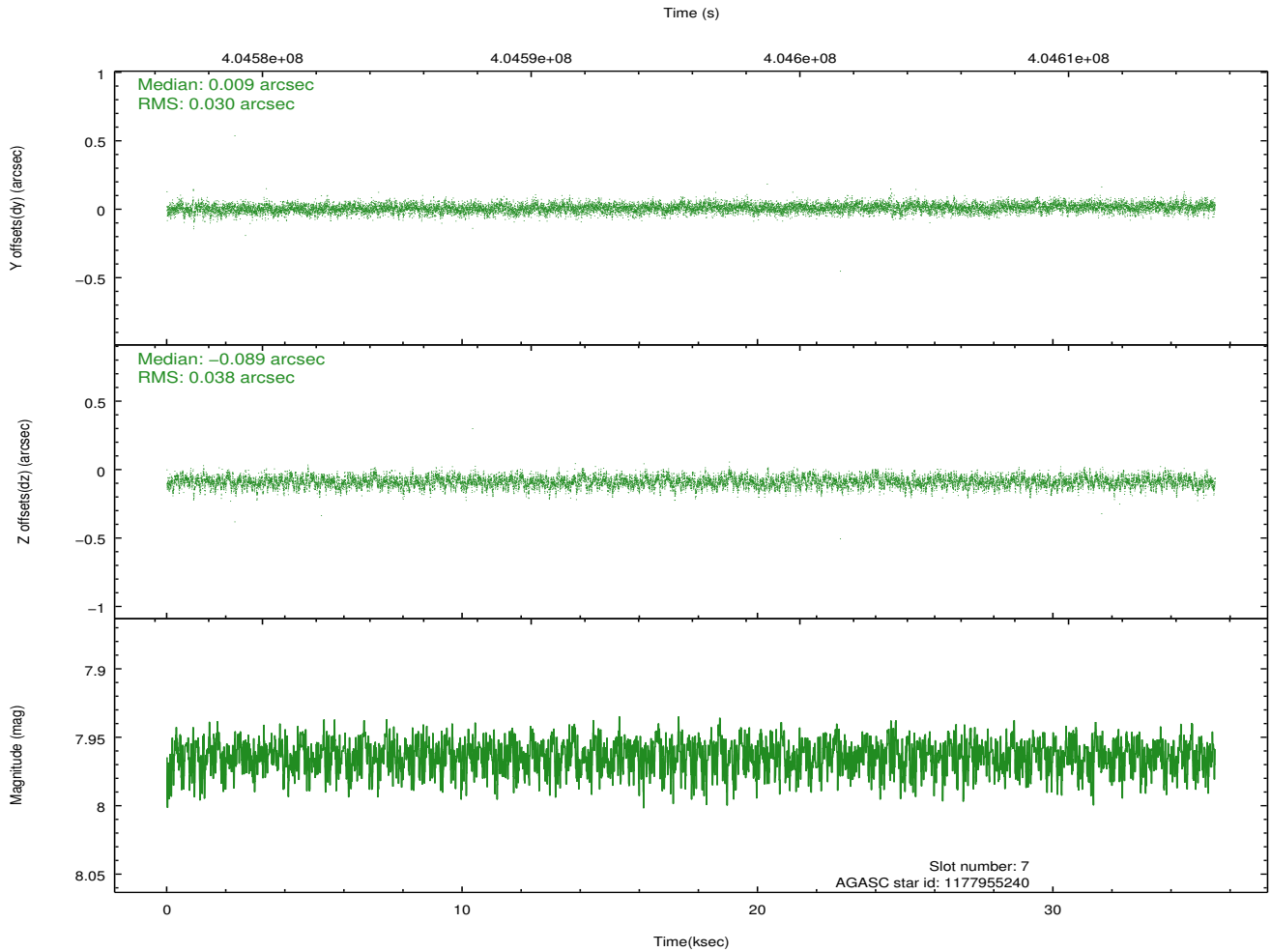
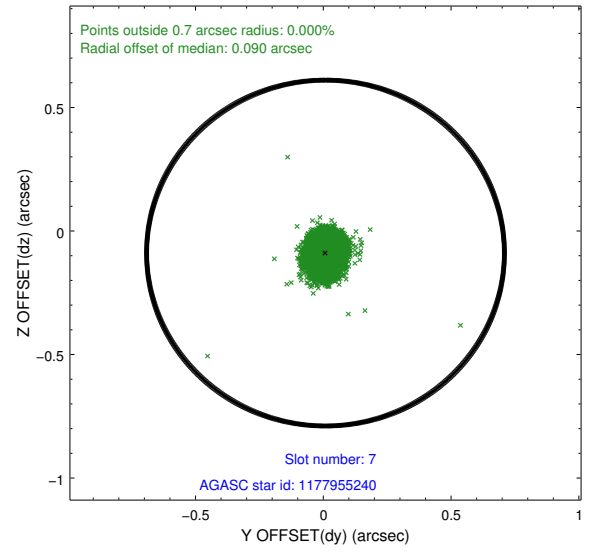
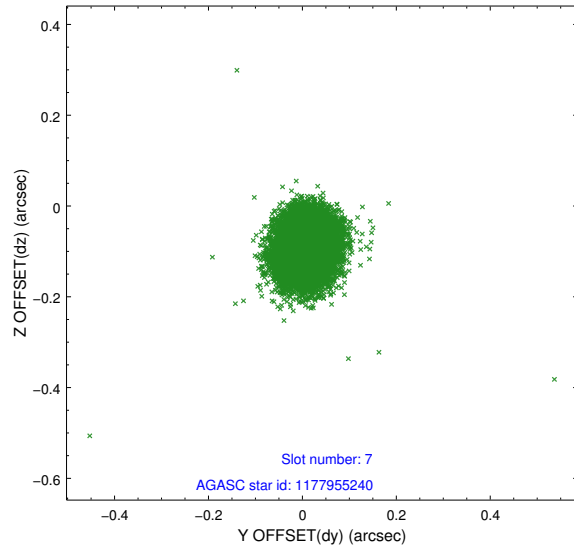
2.4.3 Slot 5



2.4.4 Slot 6

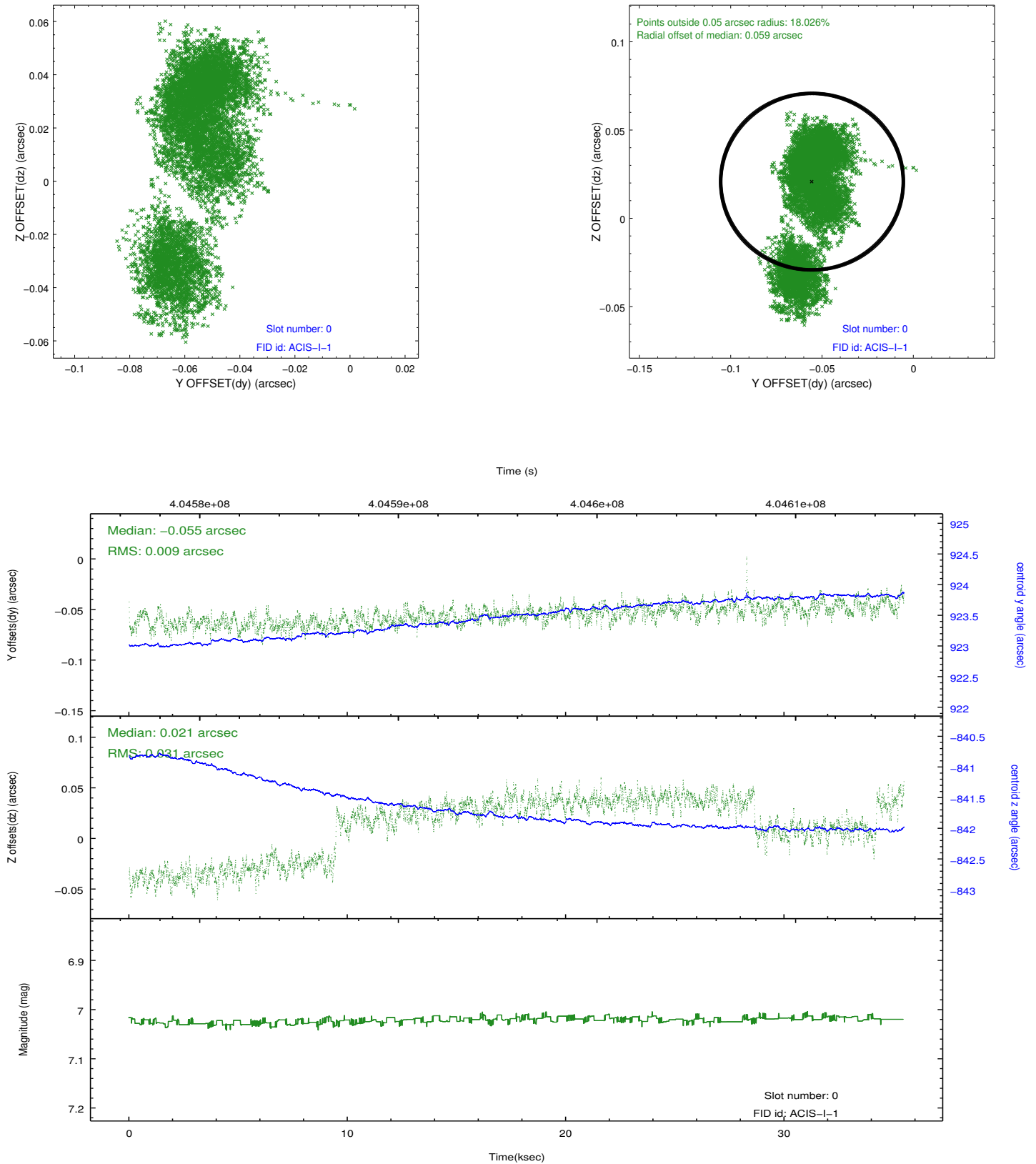


2.4.5 Slot 7

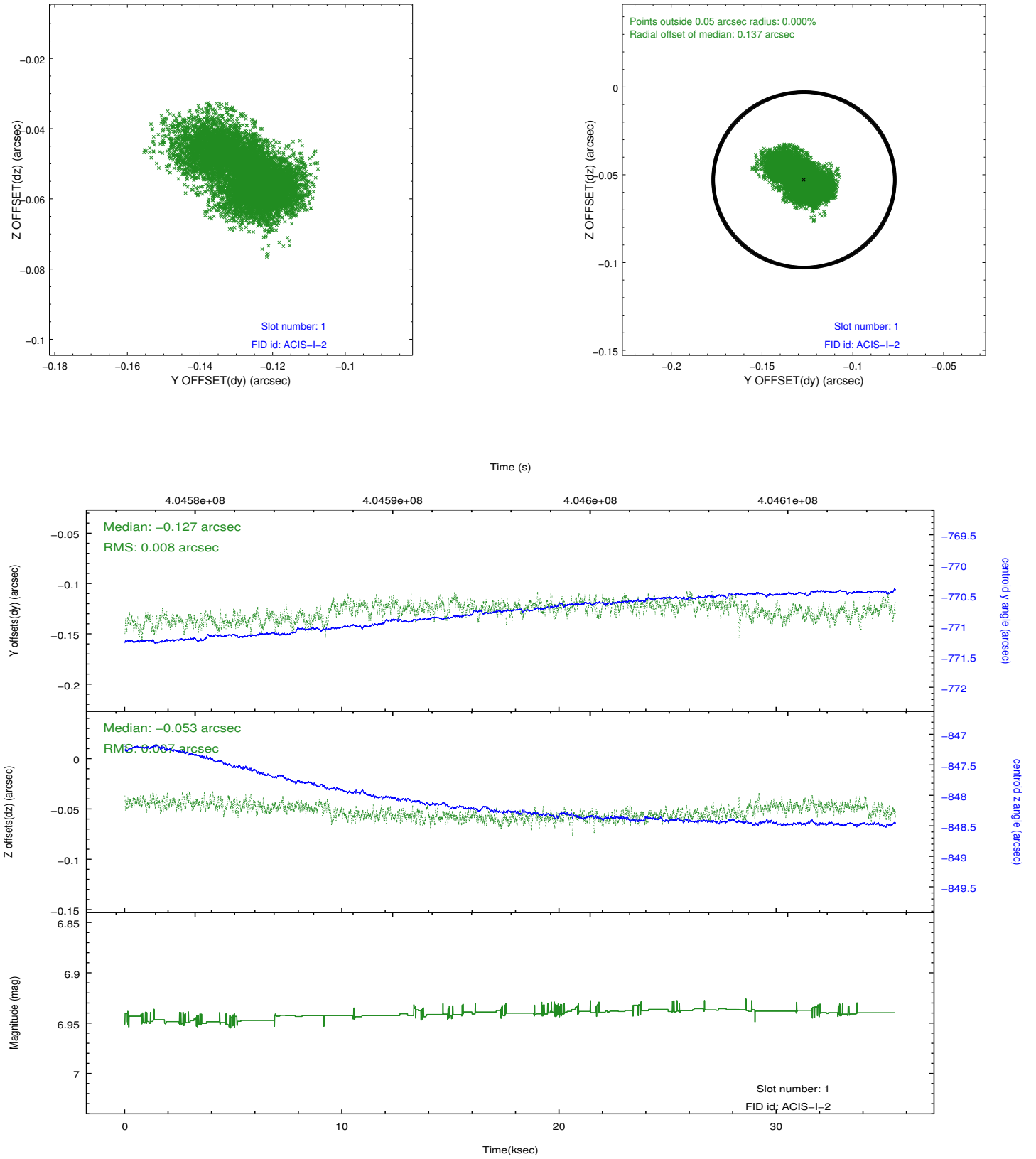


2.5 FID Slots

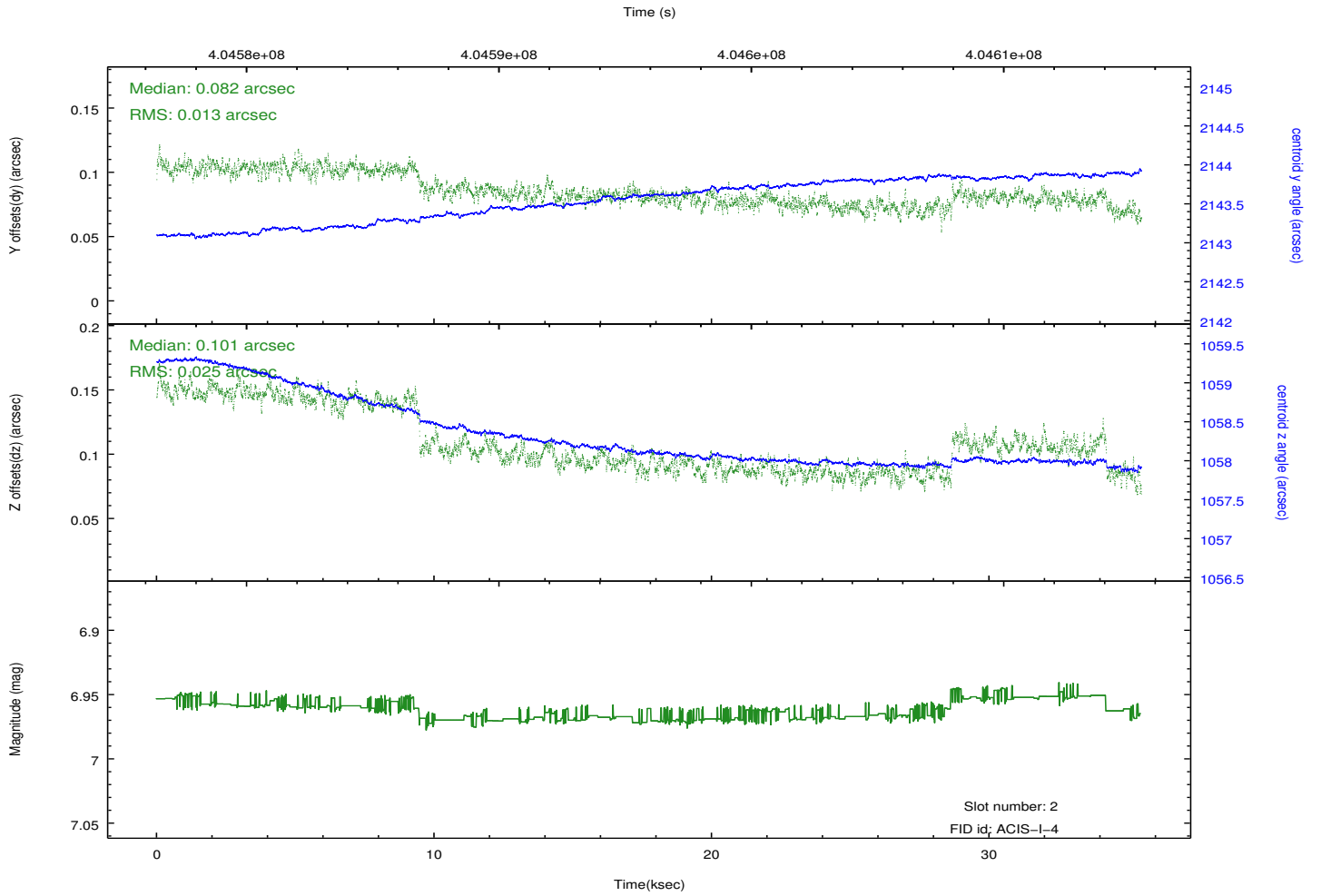
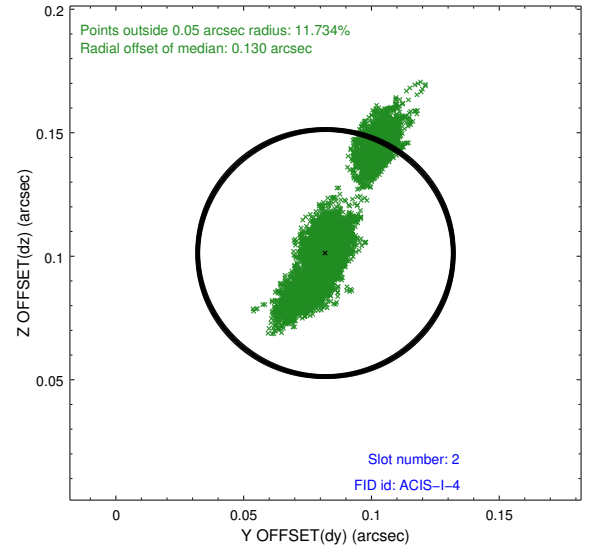
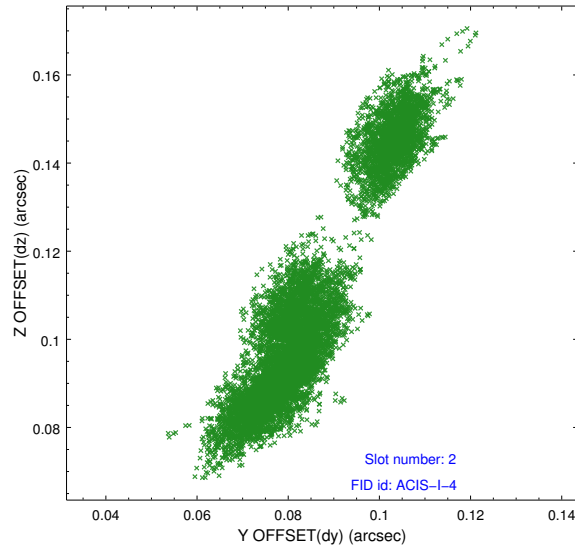
2.5.1 Slot 0



2.5.2 Slot 1



2.5.3 Slot 2



A Summary

A.1 Status

V&V Scientist	Jen Lauer
V&V Date (YYYY-MM-DD)	2012.07.16
V&V Edition	1
V&V Disposition and Status	OK
V&V Charge Time	35.405059311986

A.2 Comments