

V&V Reference Report

L2 ASCDS Version : 8.4.5

Observation 11837 - L2 Version 2
Chandra X-Ray Center

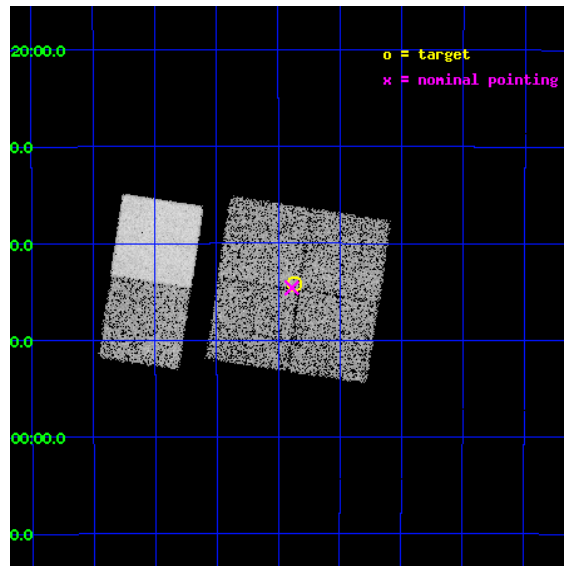
L2 Processing Date : Jun 30 2012

Contents

1	Front	2
2	OBI	3
2.1	OBI	3
2.1.1	Images	3
2.1.2	Bias	3
2.1.3	Parameters	4
2.1.4	Events	4
2.2	Compared Parameters	5
2.3	Aspect	6
2.4	Star Slots	9
2.4.1	Slot 3	9
2.4.2	Slot 4	10
2.4.3	Slot 5	11
2.4.4	Slot 6	12
2.4.5	Slot 7	13
2.5	FID Slots	14
2.5.1	Slot 0	14
2.5.2	Slot 1	15
2.5.3	Slot 2	16
A	Summary	17
A.1	Status	17
A.2	Comments	17

1 Front

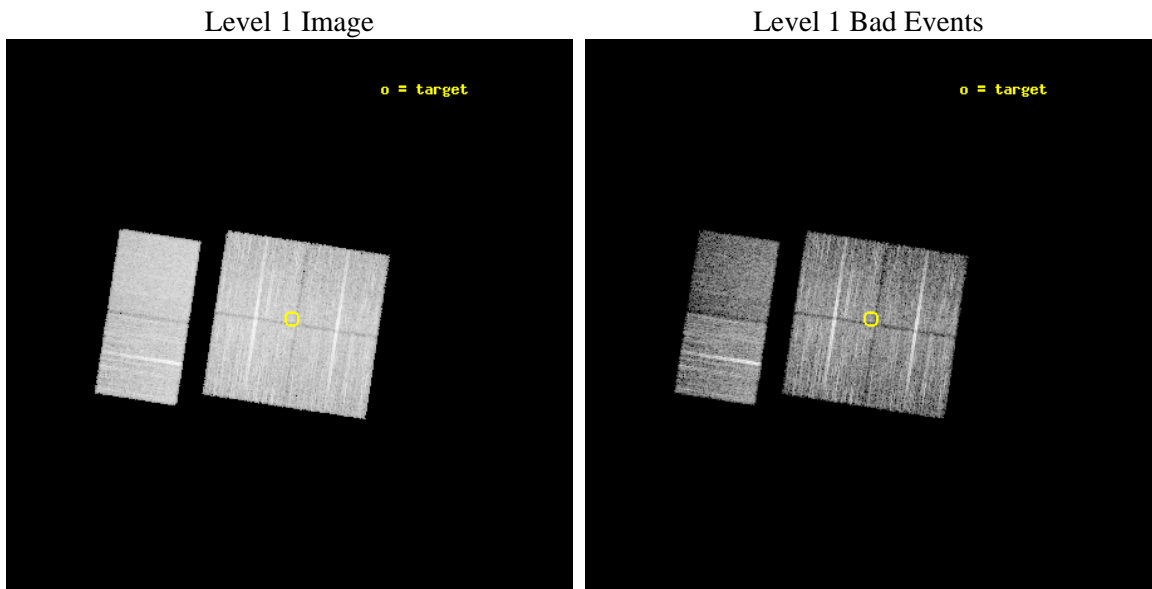
seq_num	501354	Sequence number
obs_id	11837	Observation id
title	Snap-shot survey of unidentified galactic GeV sources	Proposal tit
observer	Professor Gordon Garmire	Principal investigator
object	0FGL J1741.4-3046	Source name
dtcycle	0	
cycle	P	events from which exps? Prim/Second/Both
ra_targ	265.218029	Observer's specified target RA [deg]
dec_targ	-30.736106	Observer's specified target Dec [deg]
ra_nom	265.22218573441	Nominal RA [deg]
dec_nom	-30.743350710139	Nominal Dec [deg]
roll_nom	278.68465830865	Nominal Roll [deg]
revision	2	Processing version of data
ontime	10047.95896244	Sum of GTIs [s]
livetime	9920.7256559035	Livetime [s]
ontime0	10051.199962616	Sum of GTIs [s]
ontime1	10051.199962616	Sum of GTIs [s]
ontime2	10047.958992302	Sum of GTIs [s]
ontime3	10047.95896244	Sum of GTIs [s]
ontime6	10051.199962616	Sum of GTIs [s]
ontime7	10051.199962616	Sum of GTIs [s]
l2events	68588	Number of level 2 events



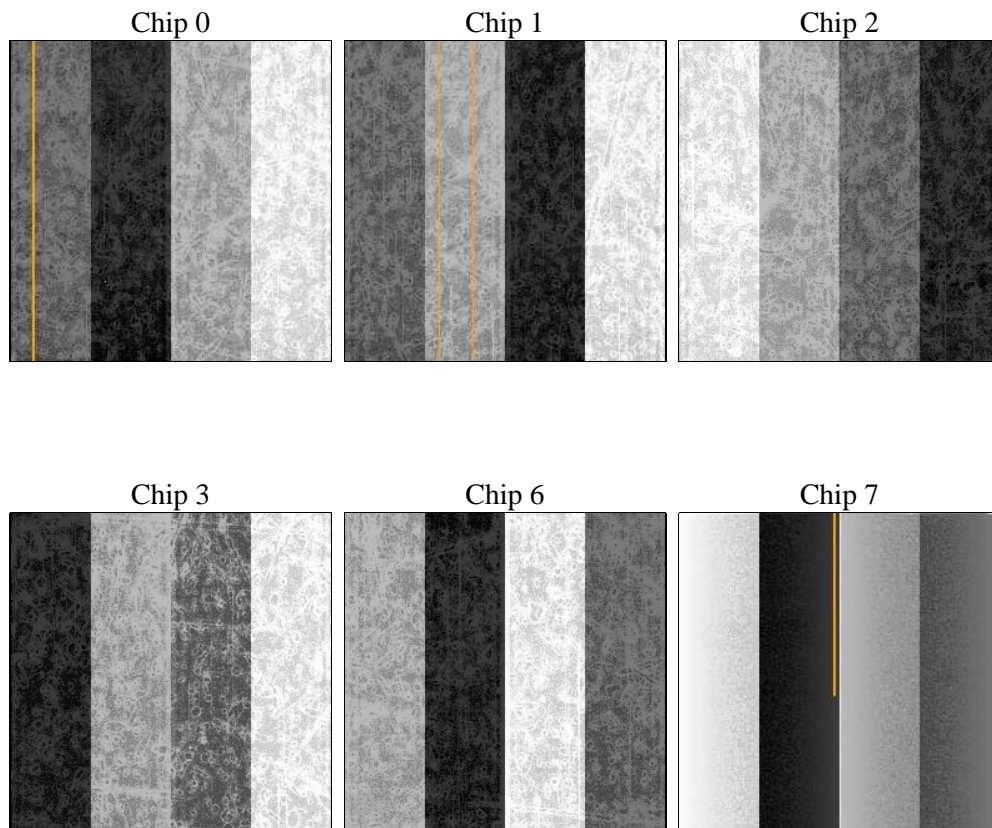
2 OBI

2.1 OBI

2.1.1 Images



2.1.2 Bias



2.1.3 Parameters

obi_num	0	Obi number	sched_exp_time	10000.000000	[s] Scheduled observation exposure time
ascdsver	8.4.5	Processing system revision	ontime	10047.95896244	Sum of GTIs [s]
caldsver	4.5.0	 	ontime0	10051.199962616	Sum of GTIs [s]
date	2012-06-30T13:48:57	Date and time of file creation	ontime1	10051.199962616	Sum of GTIs [s]
revision	2	Processing version of data	ontime2	10047.958992302	Sum of GTIs [s]
			ontime3	10047.95896244	Sum of GTIs [s]
			ontime6	10051.199962616	Sum of GTIs [s]
			ontime7	10051.199962616	Sum of GTIs [s]
			l1events	414103	Number of level 1 events

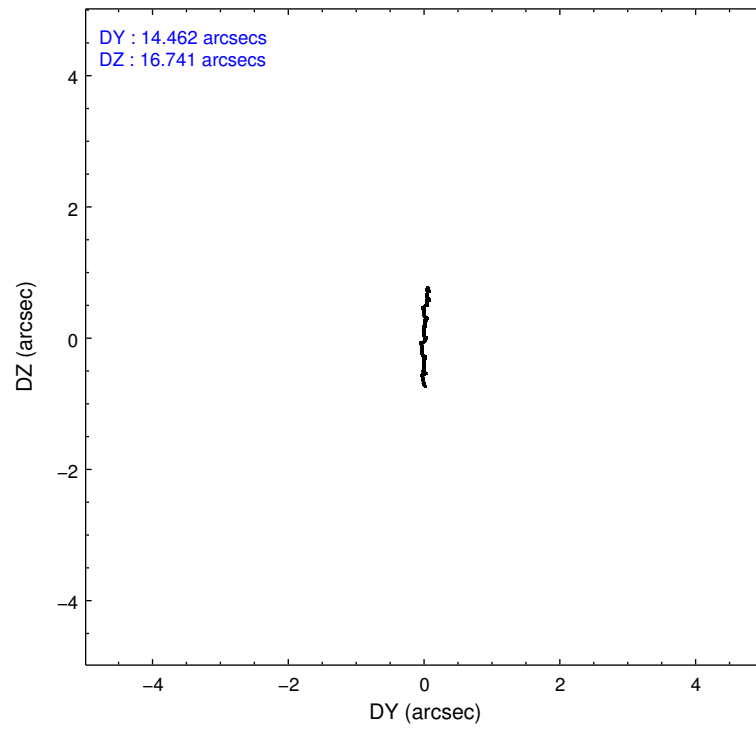
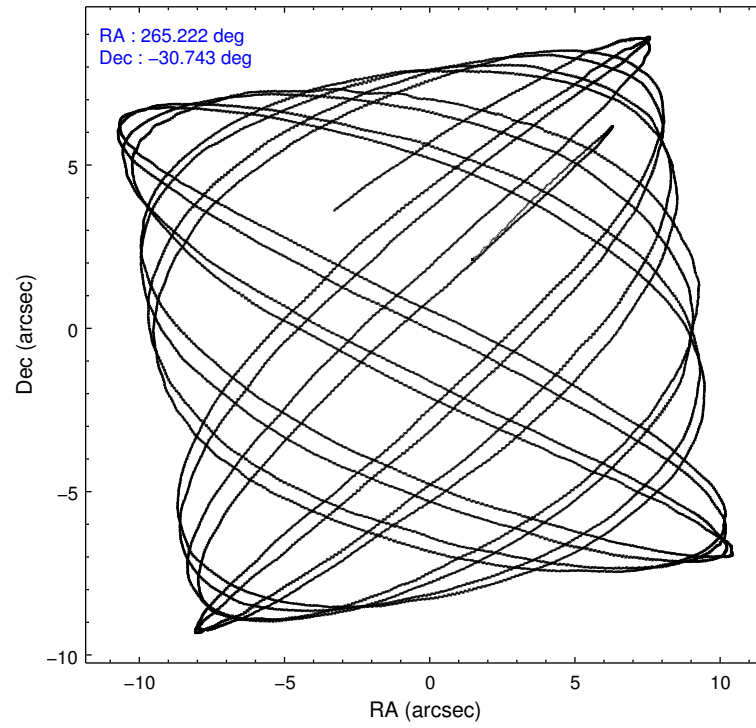
2.1.4 Events

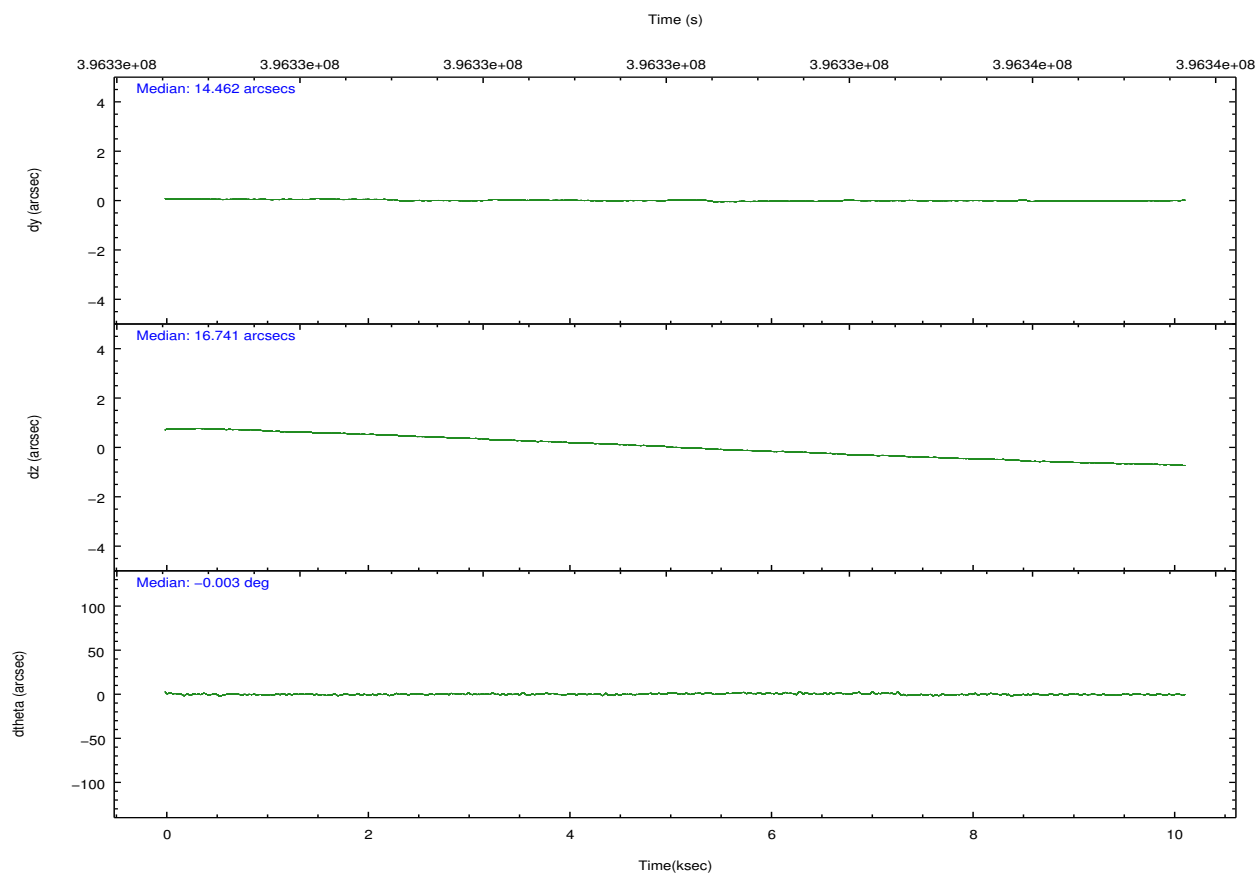
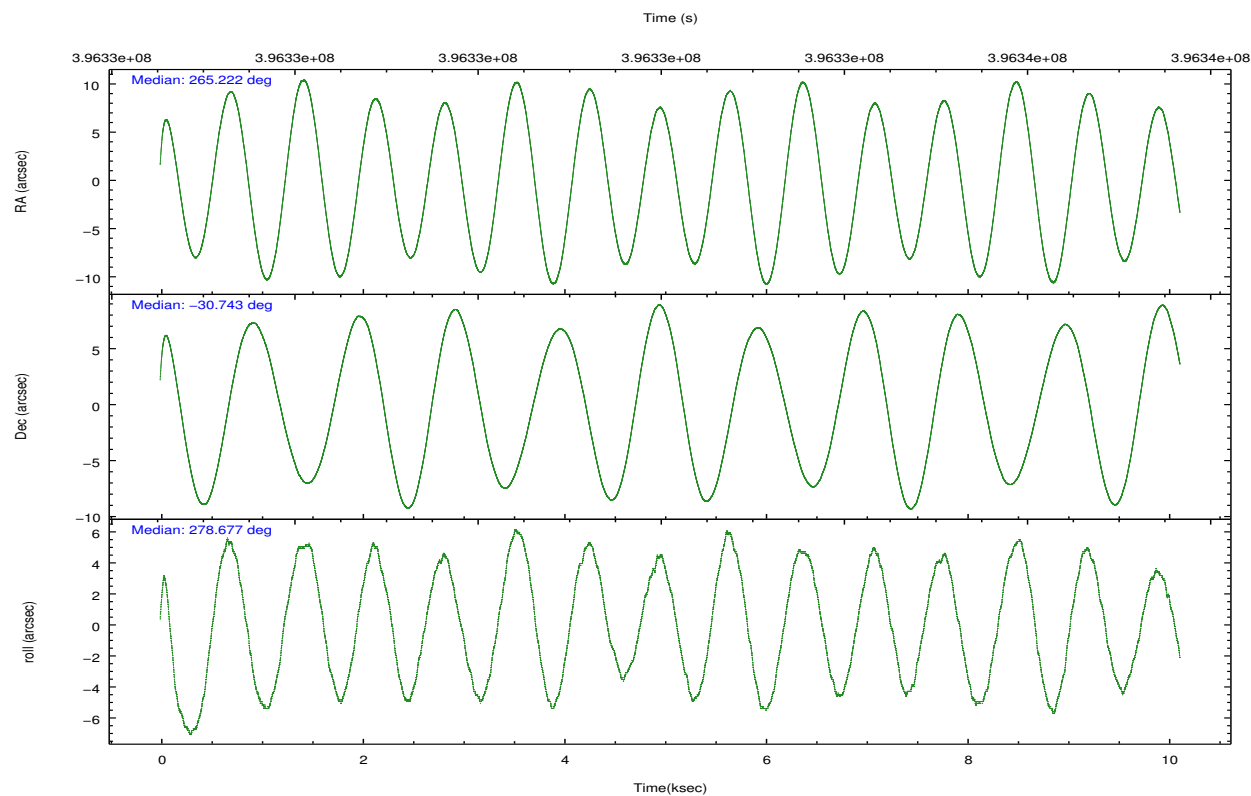
	ccd 0	ccd 1	ccd 2	ccd 3	ccd 6	ccd 7		ccd 0	ccd 1	ccd 2	ccd 3	ccd 6	ccd 7
level 1 events	64897	61062	74193	68890	71855	73206	grade 0 events	3052	3118	3130	3117	3346	3583
rejected events	57041	52836	66348	61169	63412	37068		4%	5%	4%	4%	4%	4%
rejected %	87%	86%	89%	88%	88%	50%	grade 1 events	43	33	45	60	52	117
								0%	0%	0%	0%	0%	0%
							grade 2 events	1845	1812	1835	1633	1841	7831
								2%	2%	2%	2%	2%	10%
							grade 3 events	818	885	774	820	845	3292
								1%	1%	1%	1%	1%	4%
							grade 4 events	716	887	768	793	832	3256
								1%	1%	1%	1%	1%	4%
							grade 5 events	2359	2445	2173	2806	2736	7938
								3%	4%	2%	4%	3%	10%
							grade 6 events	1430	1530	1343	1363	1581	18195
								2%	2%	1%	1%	2%	24%
							grade 7 events	54634	50352	64125	58298	60622	28994
								84%	82%	86%	84%	84%	39%

2.2 Compared Parameters

Parameter	Planned	Actual	Parameter	Planned	Actual
Instrument	ACIS	ACIS	Obspar format version number	7	7
Detector	ACIS-012367	ACIS-012367	Obspar file type	PREDICTED	ACTUAL
Grating	NONE	NONE	Obspar update status	NONE	UPDATED
Data mode	VFAINT	VFAINT	CCD I0 on	Y	Y
Observation mode	POINTING	POINTING	CCD I1 on	Y	Y
[deg] Pointing RA	265.202055	265.2221857344097	CCD I2 on	Y	Y
[deg] Pointing Dec	-30.721970	-30.74335071013945	CCD I3 on	Y	Y
[deg] Pointing Roll	278.465674	278.6846583086526	CCD S0 on	N	N
[mm] SIM focus pos	-0.782348	-0.7809083437167272	CCD S1 on	N	N
[mm] SIM defocus	0	0.001439871863259334	CCD S2 on	O2	Y
[mm] SIM translation stage pos	-233.592463	-233.5874344608287	CCD S3 on	O1	Y
[mm] SIM translation stage offset	0	-0.005018542100998502	CCD S4 on	N	N
[s] Observation start time (MET)	396327143.184000	396325901.25808	CCD S5 on	N	N
Observation start date	2010-07-24T02:51:17	2010-07-24T02:31:41	Number of optional ACIS chips dropped	0	0
[s] Observation end time (MET)	396337143.184000	396337652.88368	On-chip summing requested	N	N
Observation end date	2010-07-24T05:37:57	2010-07-24T05:47:32	Subarray requested	NONE	NONE
Read mode	TIMED	TIMED	Alternating exposures requested	N	N
			[s] Primary exposure time	0.000000	3.2

2.3 Aspect



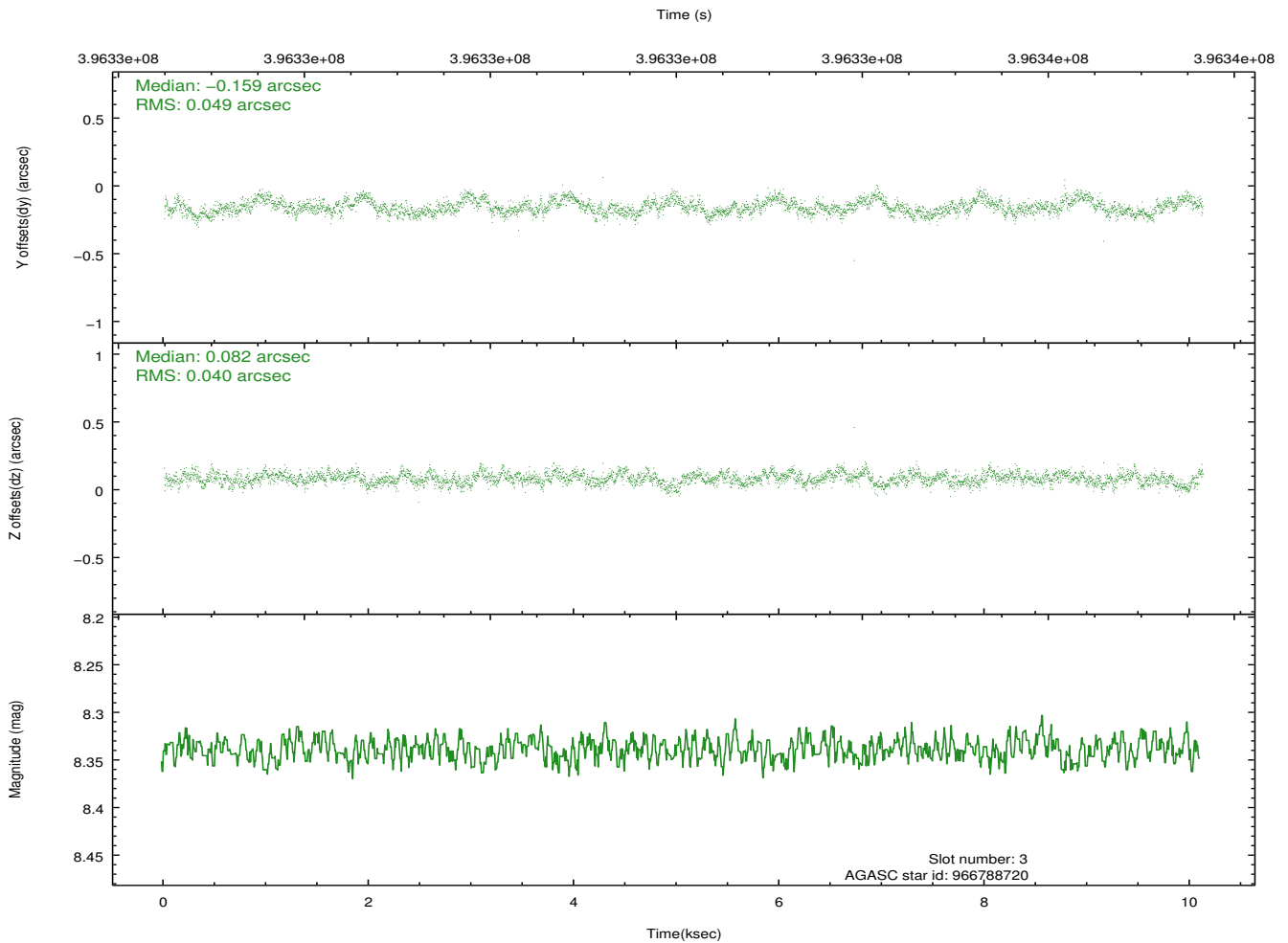
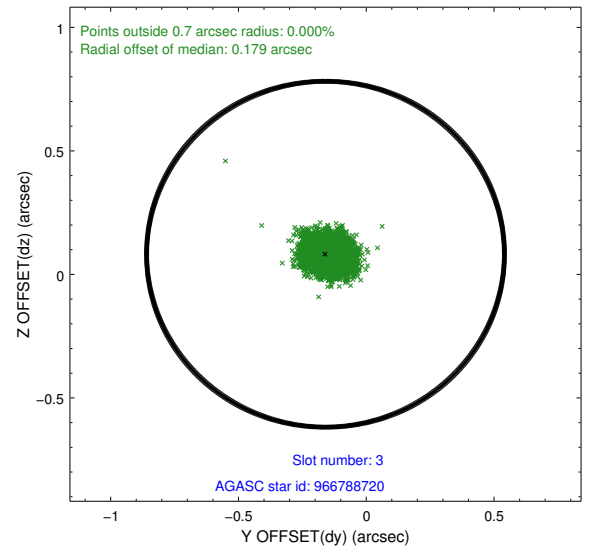
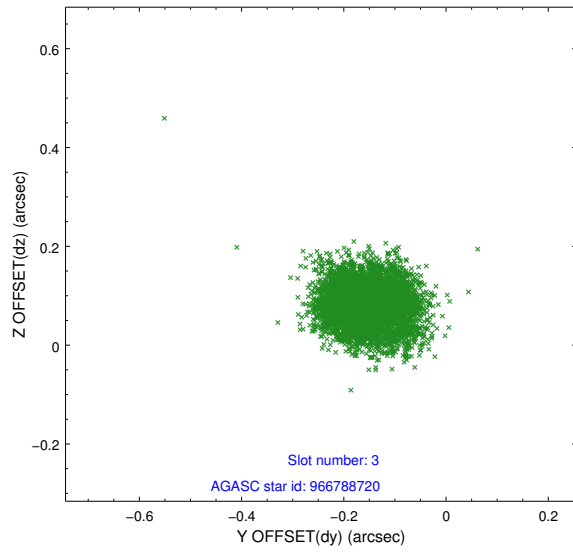


Slot Statistics

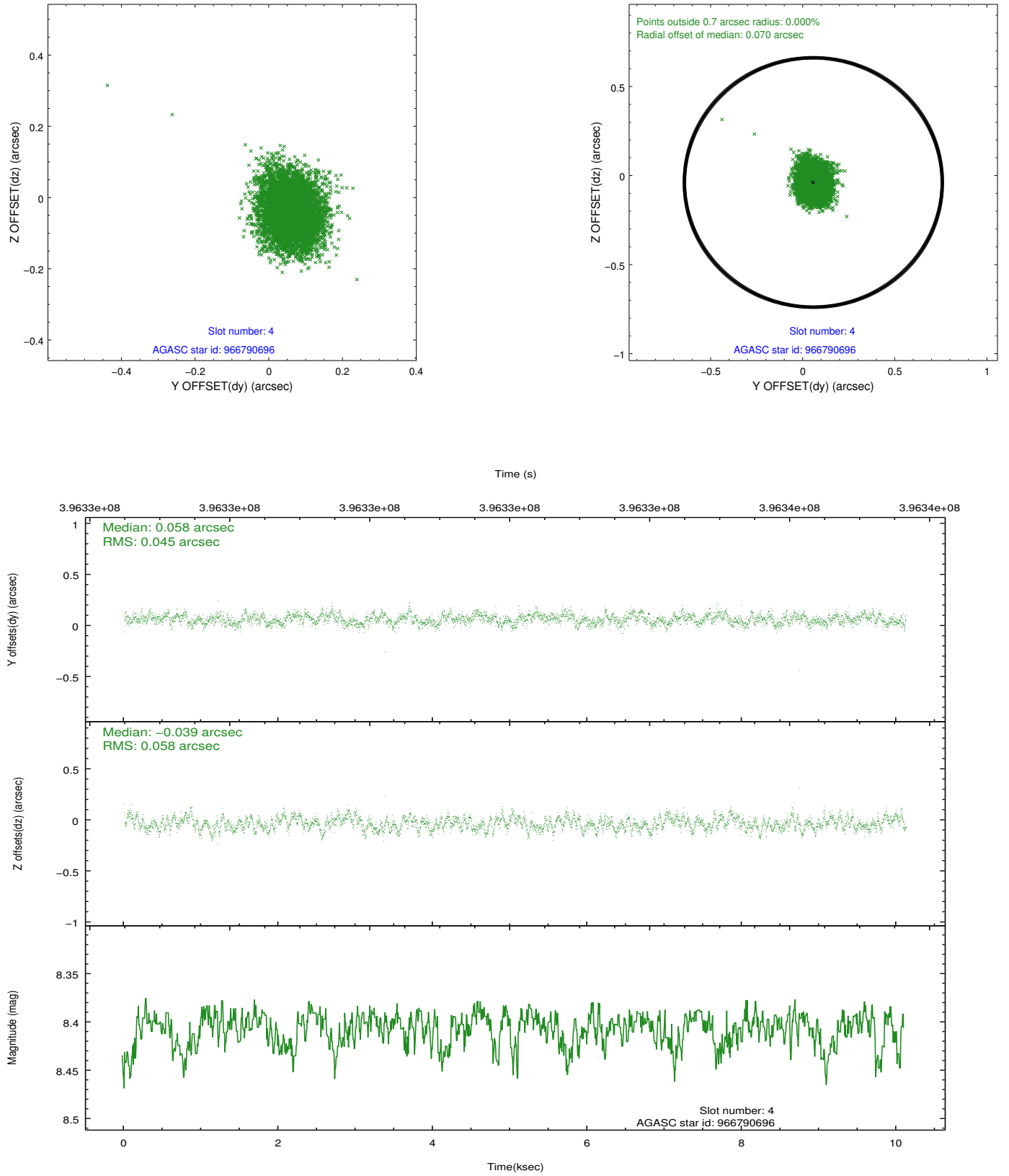
slot	status	id	mag	n_pts	med_dy	med_dz	dr1	dr2	ra	dec	mean_y	mean_z
0	FID	ACIS-I-2	6.91	2468	-0.095	-0.084	0.011	0.020	0.000000	0.000000	-769.25	-846.86
1	FID	ACIS-I-4	6.93	2468	0.171	0.079	0.007	0.012	0.000000	0.000000	2144.81	1059.24
2	FID	ACIS-I-5	6.98	2468	-0.177	0.074	0.009	0.017	0.000000	0.000000	-1822.51	1057.64
3	GUIDE	966788720	8.34	4935	-0.159	0.082	0.067	0.108	264.555693	-31.018346	767.96	-2130.11
4	GUIDE	966790696	8.41	4934	0.058	-0.039	0.078	0.126	264.462516	-30.909486	339.78	-2360.18
5	GUIDE	966787648	8.88	4932	-0.035	-0.030	0.060	0.098	265.297931	-30.077843	-2249.18	636.10
6	GUIDE	966924920	8.09	4936	-0.004	-0.094	0.078	0.125	265.875401	-30.176961	-1626.42	2360.59
7	GUIDE	966924912	8.00	4936	0.131	0.081	0.057	0.093	266.020014	-31.275150	2349.38	2195.83

2.4 Star Slots

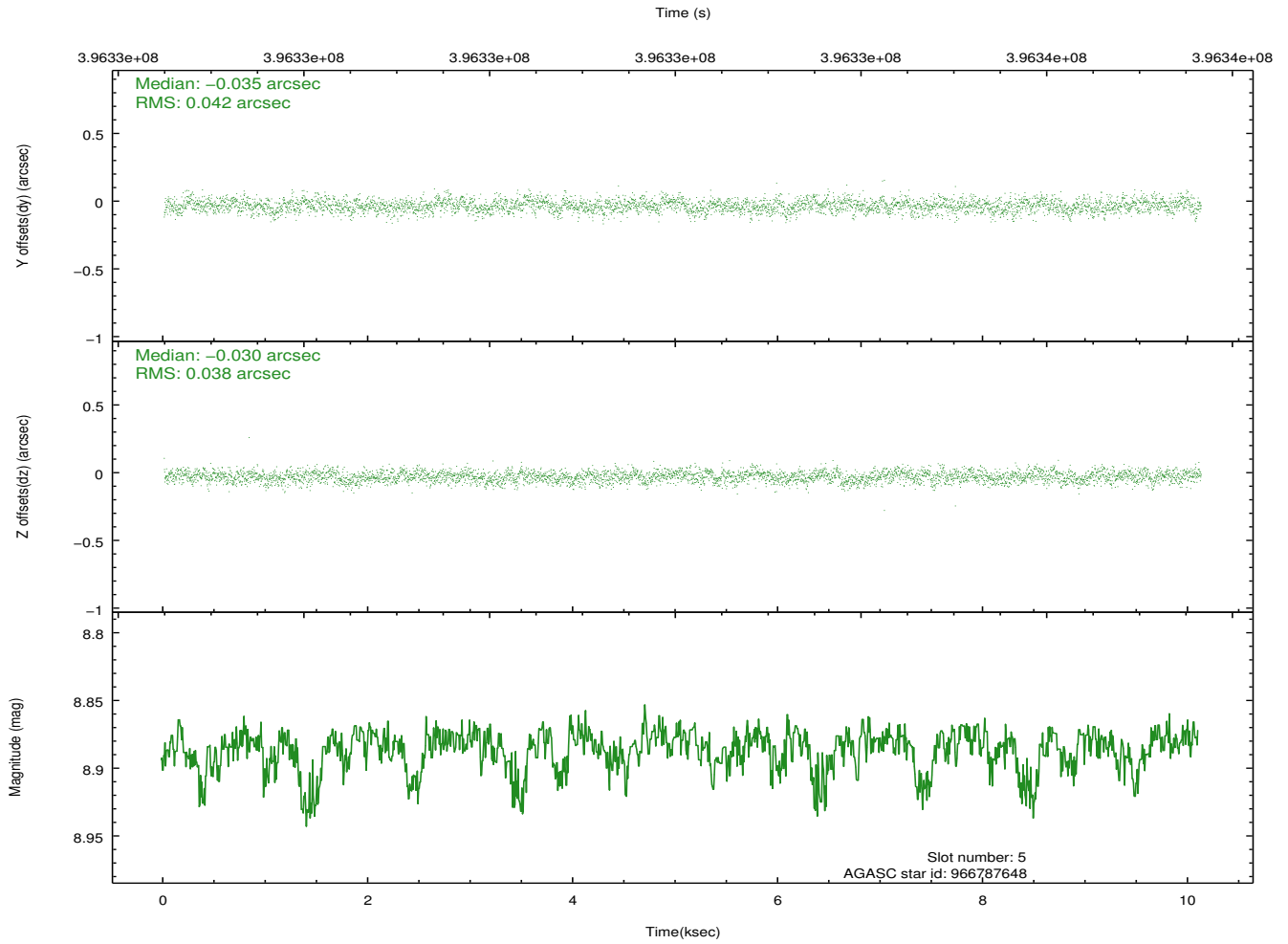
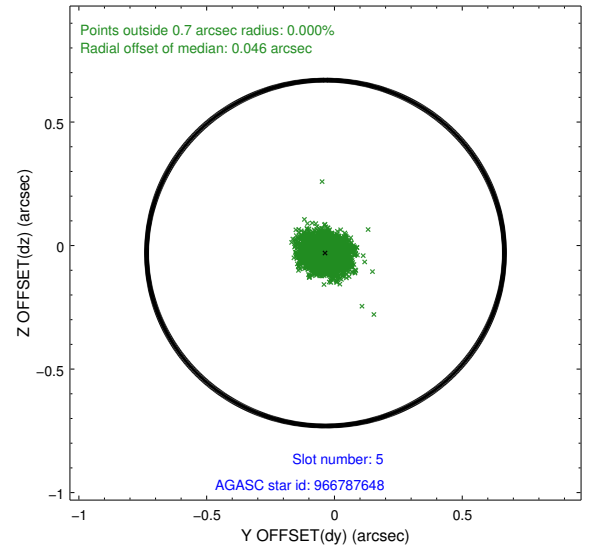
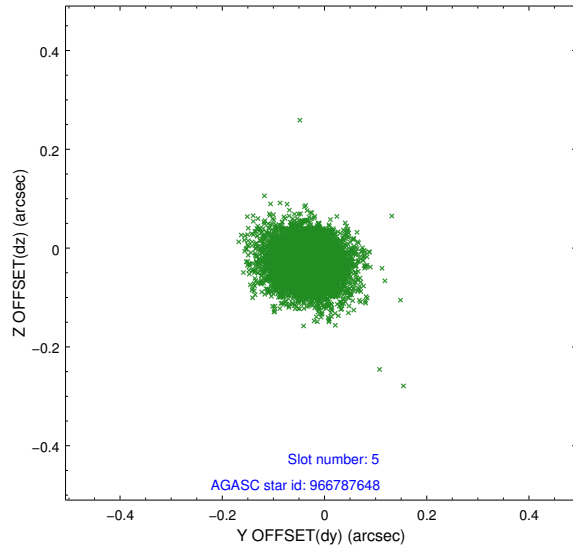
2.4.1 Slot 3



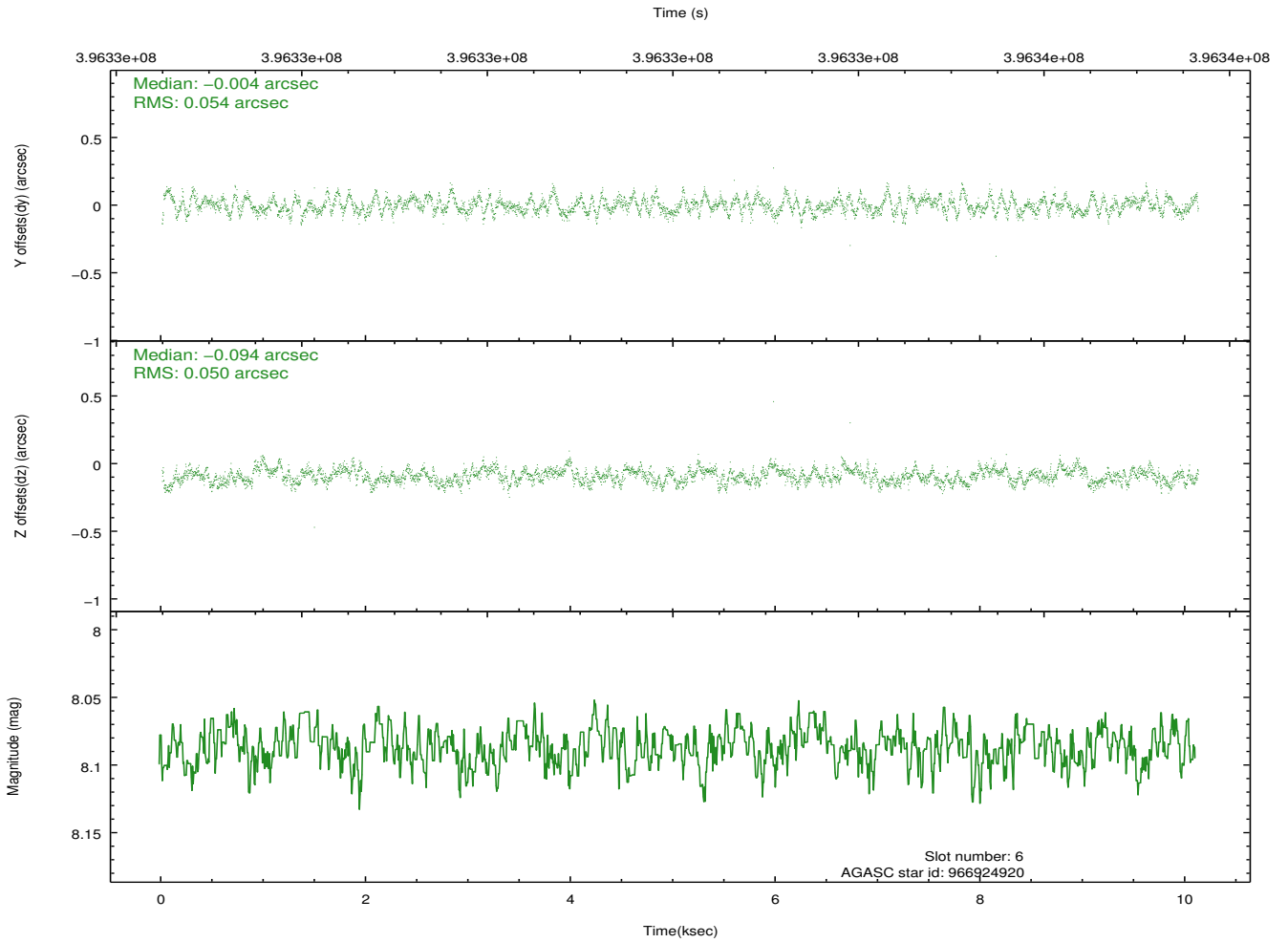
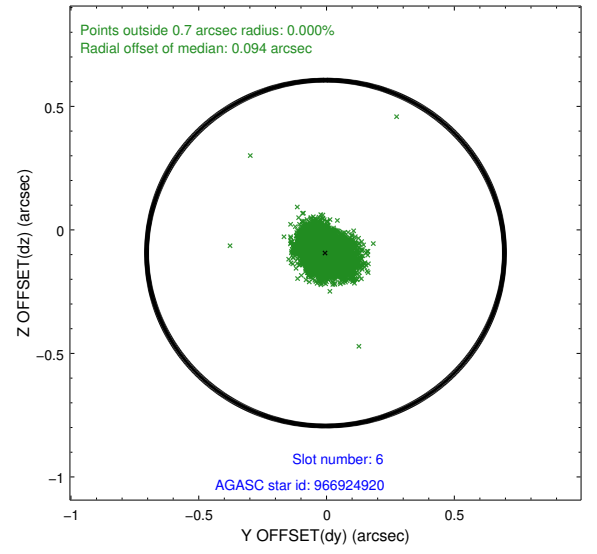
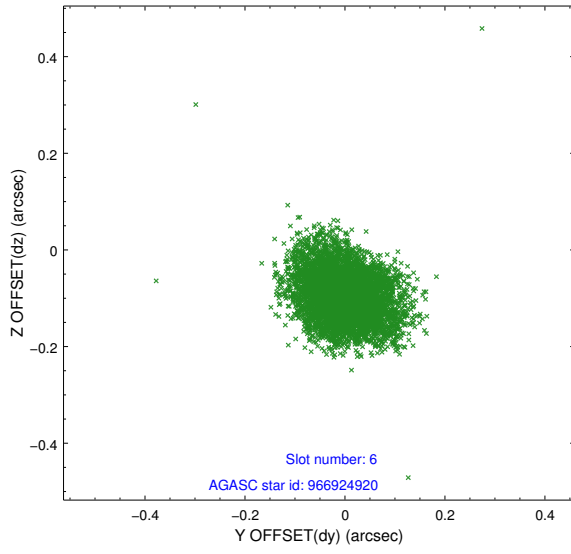
2.4.2 Slot 4



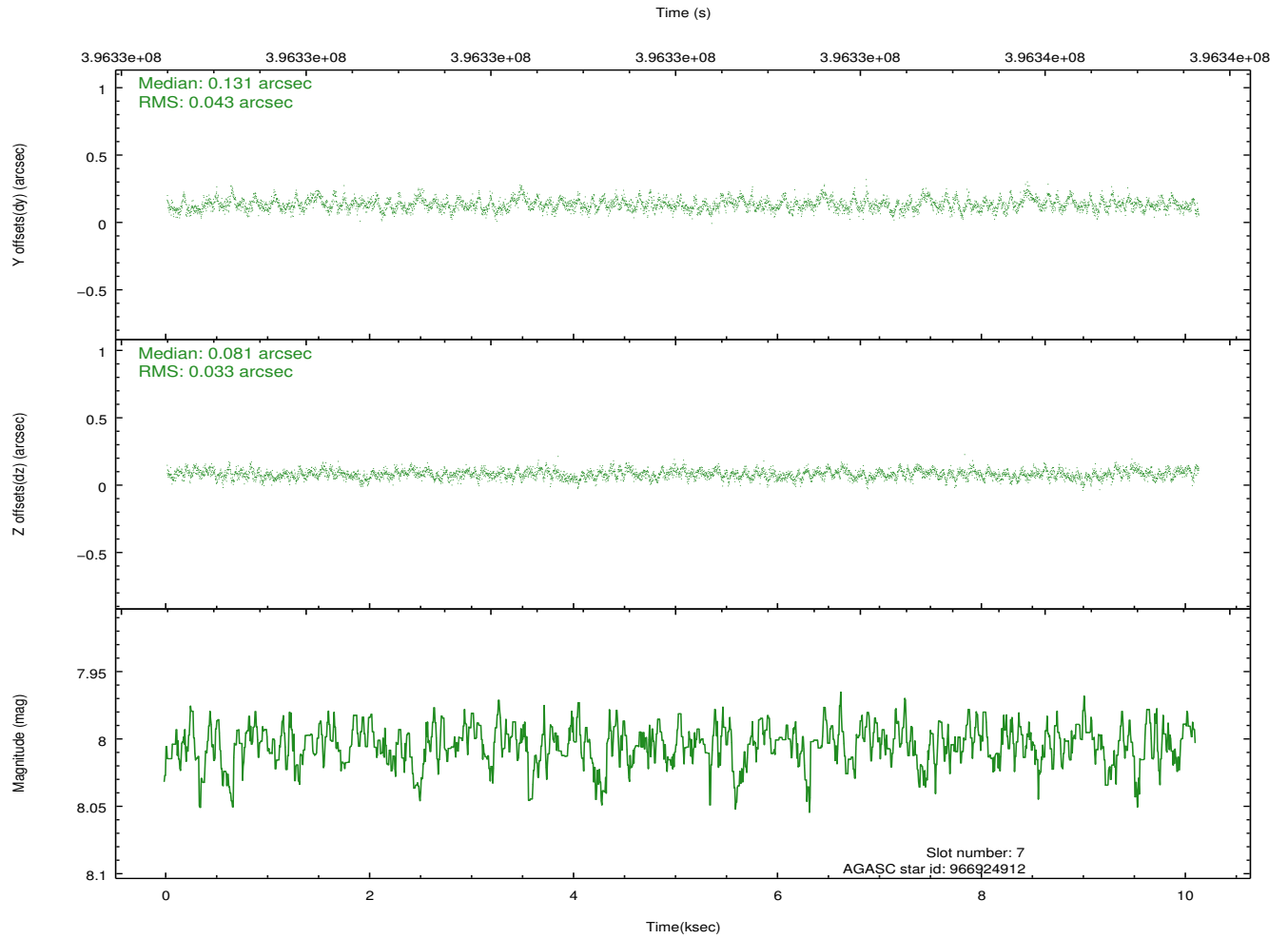
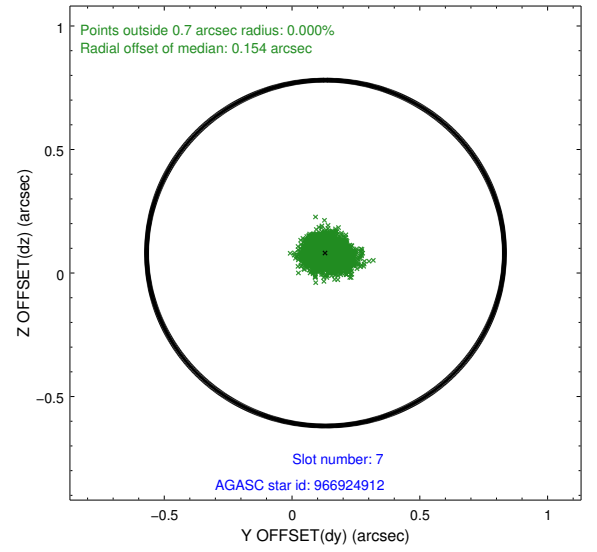
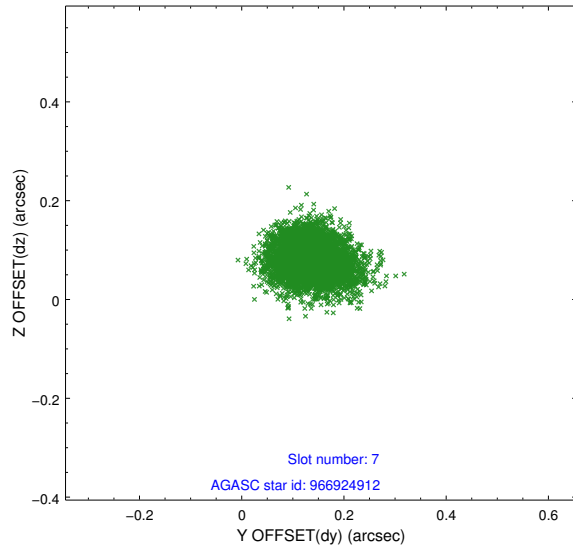
2.4.3 Slot 5



2.4.4 Slot 6

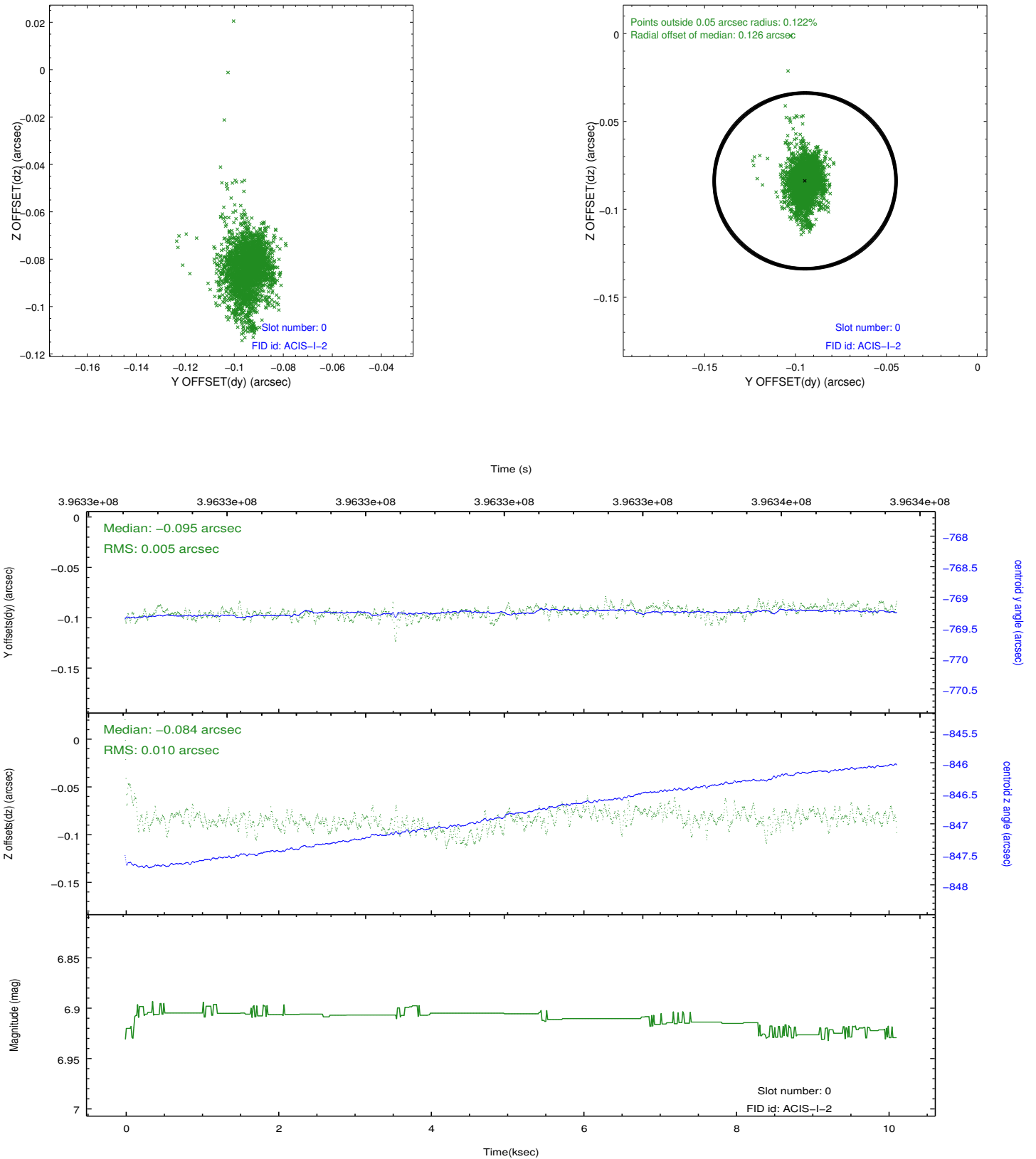


2.4.5 Slot 7

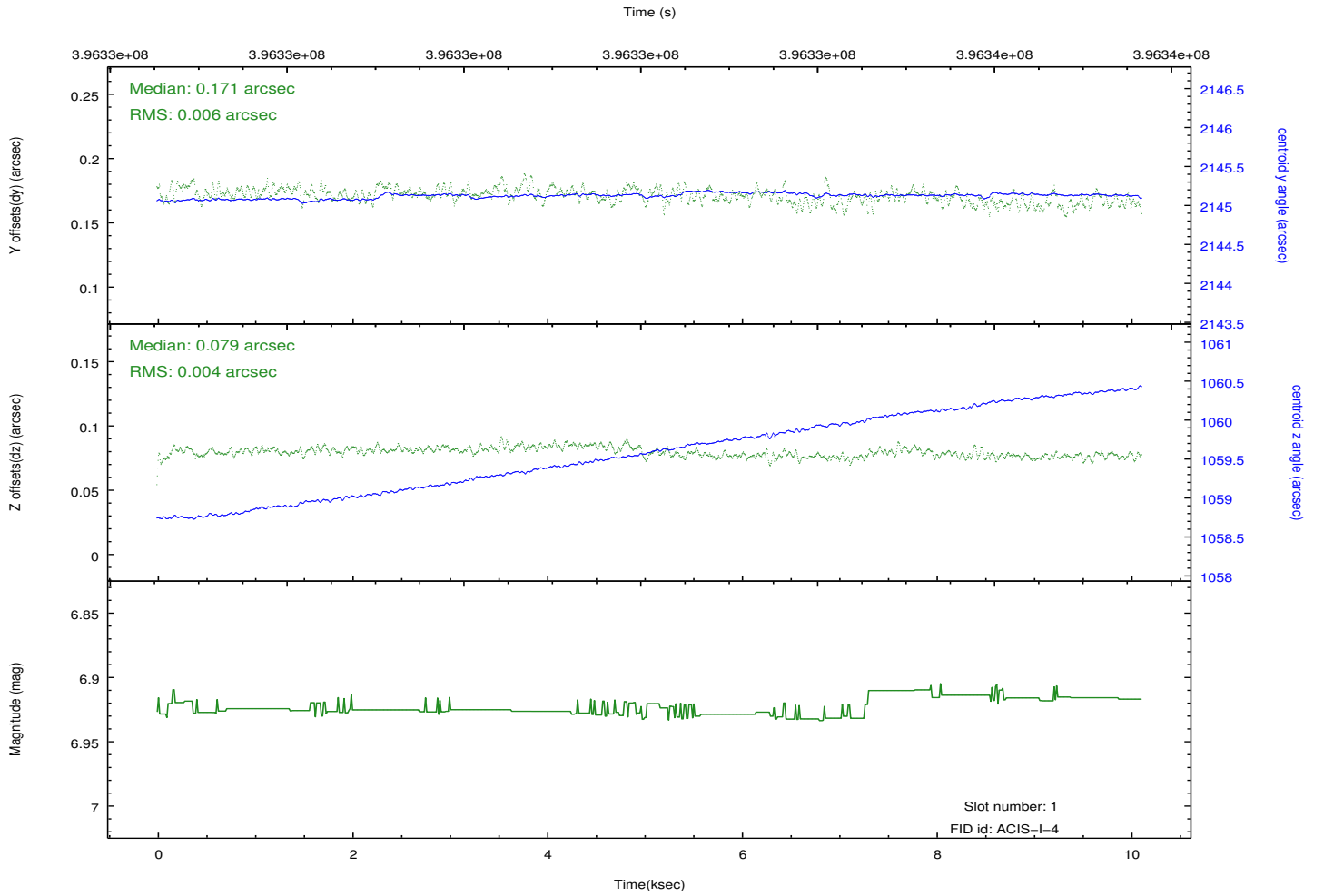
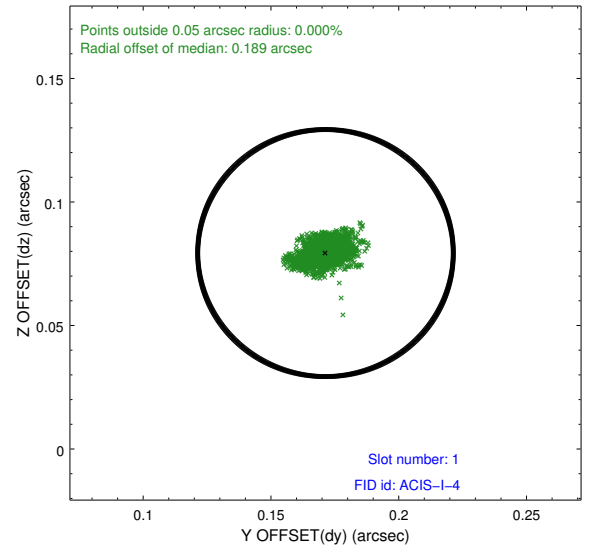
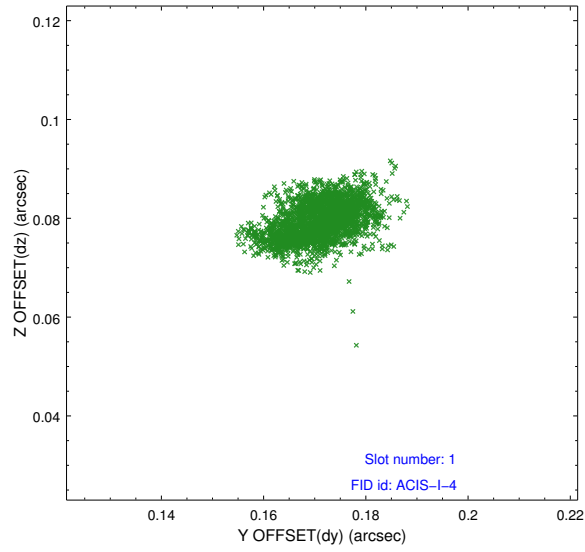


2.5 FID Slots

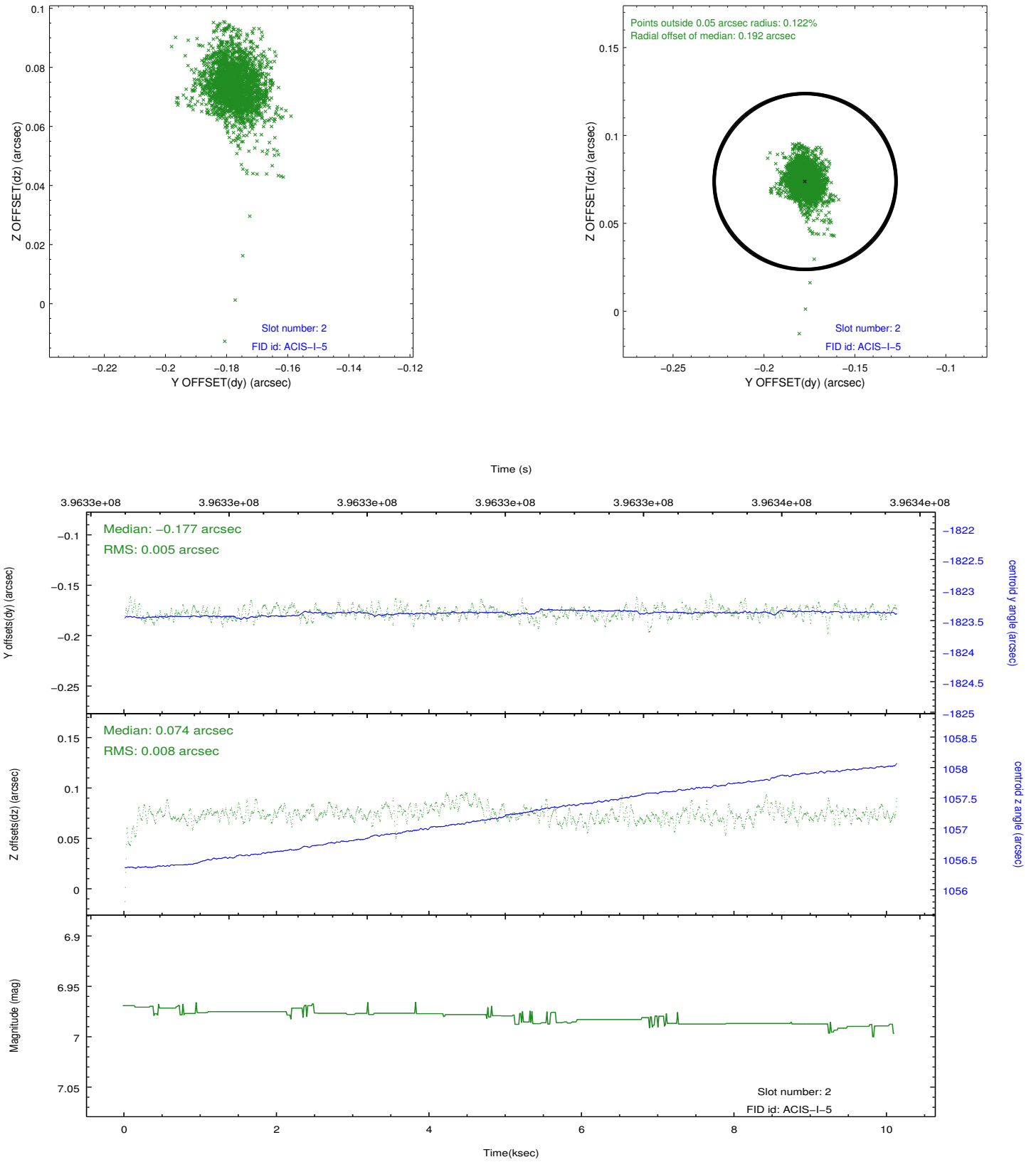
2.5.1 Slot 0



2.5.2 Slot 1



2.5.3 Slot 2



A Summary

A.1 Status

V&V Scientist	Jen Lauer
V&V Date (YYYY-MM-DD)	2012.07.09
V&V Edition	1
V&V Disposition and Status	OK
V&V Charge Time	10.04795896244

A.2 Comments