

# V&V Reference Report

## L2 ASCDS Version : 8.4.5

Observation 11124 - L2 Version 2  
Chandra X-Ray Center

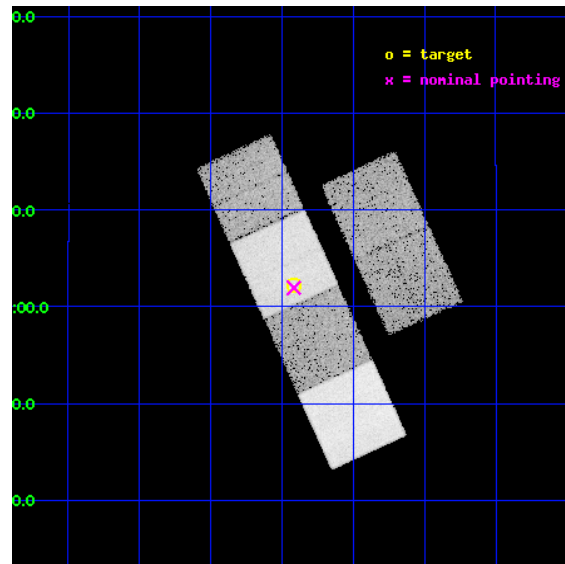
L2 Processing Date : Jun 12 2012

## Contents

<b>1</b>	<b>Front</b>	<b>2</b>
<b>2</b>	<b>OBI</b>	<b>3</b>
2.1	OBI . . . . .	3
2.1.1	Images . . . . .	3
2.1.2	Bias . . . . .	3
2.1.3	Parameters . . . . .	4
2.1.4	Events . . . . .	4
2.2	Compared Parameters . . . . .	5
2.3	Aspect . . . . .	6
2.4	Star Slots . . . . .	9
2.4.1	Slot 3 . . . . .	9
2.4.2	Slot 4 . . . . .	10
2.4.3	Slot 5 . . . . .	11
2.4.4	Slot 6 . . . . .	12
2.4.5	Slot 7 . . . . .	13
2.5	FID Slots . . . . .	14
2.5.1	Slot 0 . . . . .	14
2.5.2	Slot 1 . . . . .	15
2.5.3	Slot 2 . . . . .	16
<b>A</b>	<b>Summary</b>	<b>17</b>
A.1	Status . . . . .	17
A.2	Comments . . . . .	17

# 1 Front

seq_num	501209	Sequence number
obs_id	11124	Observation id
title	A Search for X-Rays From Pulsars Discovered by Fermi	Proposal titl
observer	Dr. Mallory Roberts	Principal investigator
object	PSR J1907+06	Source name
dtcycle	0	&#160
cycle	P	events from which exps? Prim/Second/Both
ra_targ	286.978603	Observer's specified target RA [deg]
dec_targ	6.03754	Observer's specified target Dec [deg]
ra_nom	286.97920869013	Nominal RA [deg]
dec_nom	6.0327095268769	Nominal Dec [deg]
roll_nom	245.42084566535	Nominal Roll [deg]
revision	2	Processing version of data
ontime	19139.199928761	Sum of GTIs [s]
livetime	18896.84785502	Livetime [s]
ontime2	19135.958908498	Sum of GTIs [s]
ontime3	19135.958908498	Sum of GTIs [s]
ontime5	19139.199928761	Sum of GTIs [s]
ontime6	19139.199928761	Sum of GTIs [s]
ontime7	19139.199928761	Sum of GTIs [s]
ontime8	19139.199928761	Sum of GTIs [s]
l2events	226702	Number of level 2 events

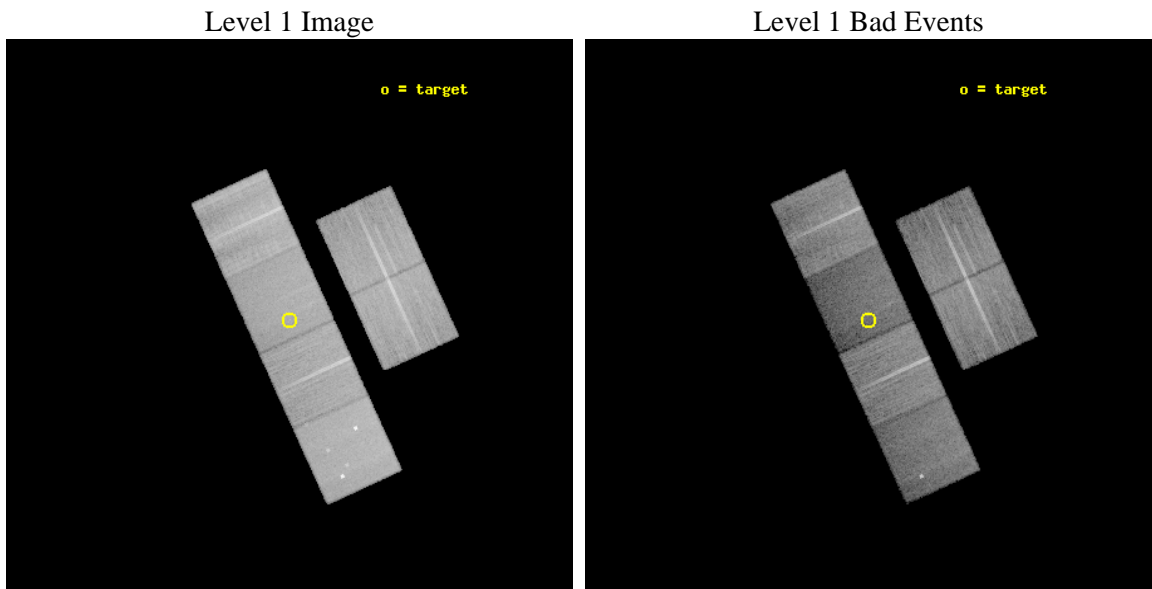




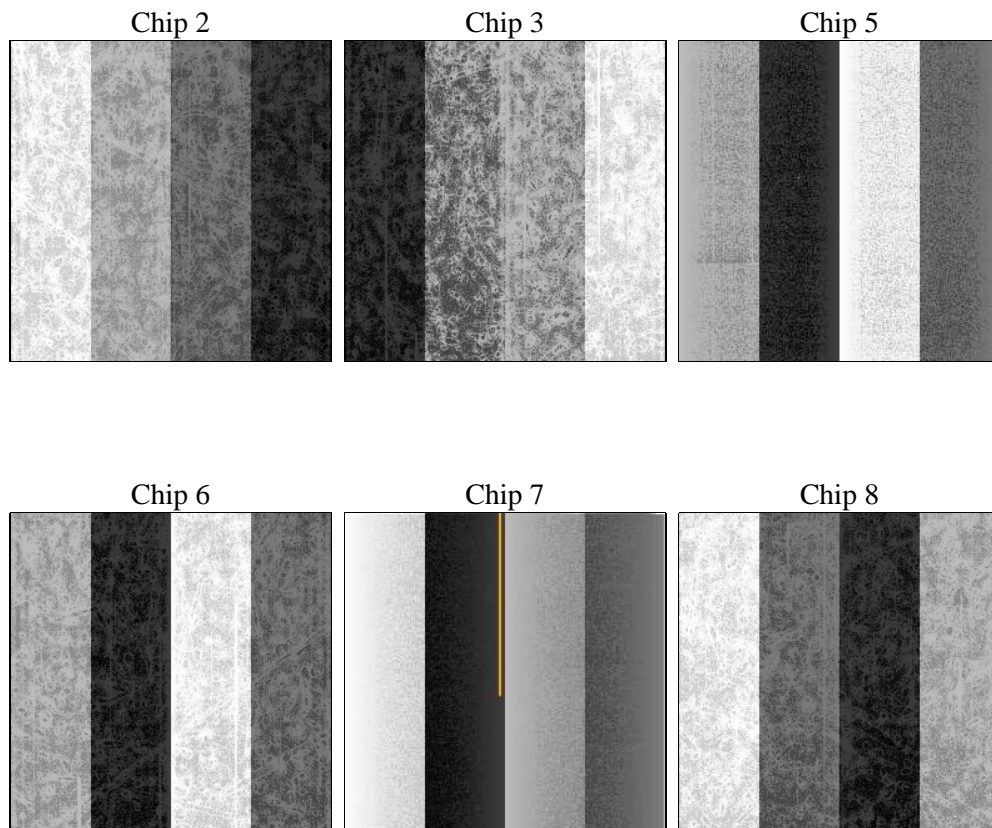
## 2 OBI

### 2.1 OBI

#### 2.1.1 Images



#### 2.1.2 Bias



### 2.1.3 Parameters

obi_num	0	Obi number	sched_exp_time	19000.000000	[s] Scheduled observation exposure time
ascdsver	8.4.5	Processing system revision	ontime	19139.199928761	Sum of GTIs [s]
caldsver	4.4.10	&#160	ontime2	19135.958908498	Sum of GTIs [s]
date	2012-06-12T02:13:17	Date and time of file creation	ontime3	19135.958908498	Sum of GTIs [s]
revision	2	Processing version of data	ontime5	19139.199928761	Sum of GTIs [s]
			ontime6	19139.199928761	Sum of GTIs [s]
			ontime7	19139.199928761	Sum of GTIs [s]
			ontime8	19139.199928761	Sum of GTIs [s]
			l1events	1055822	Number of level 1 events

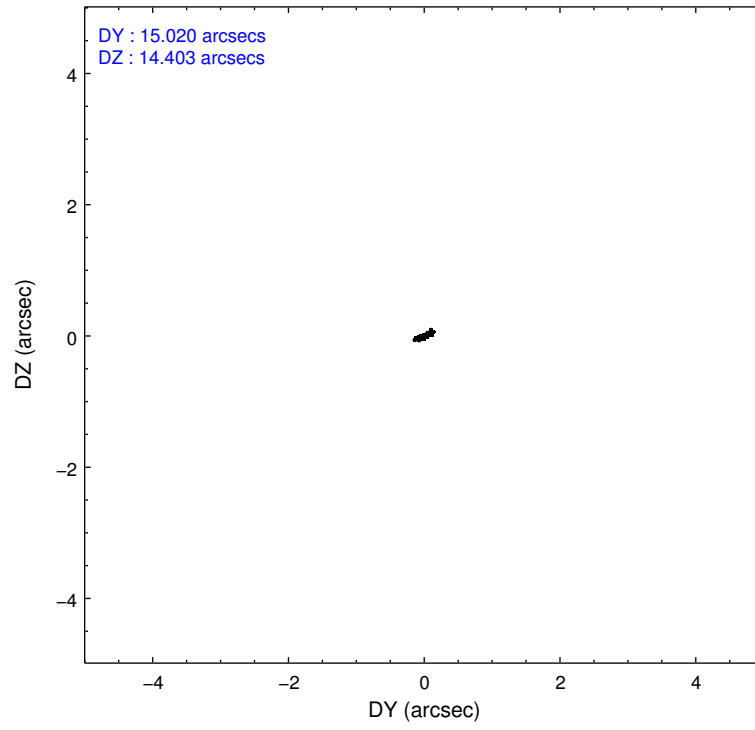
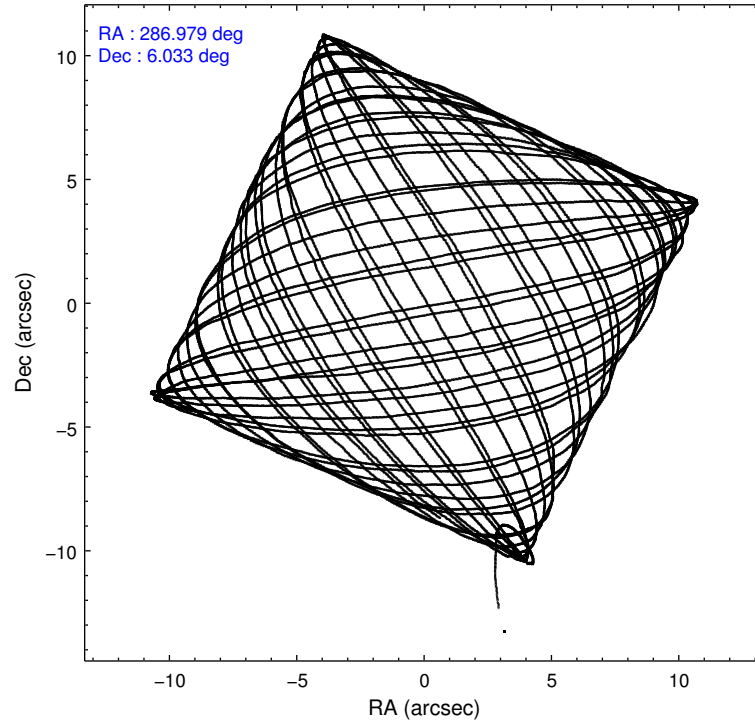
### 2.1.4 Events

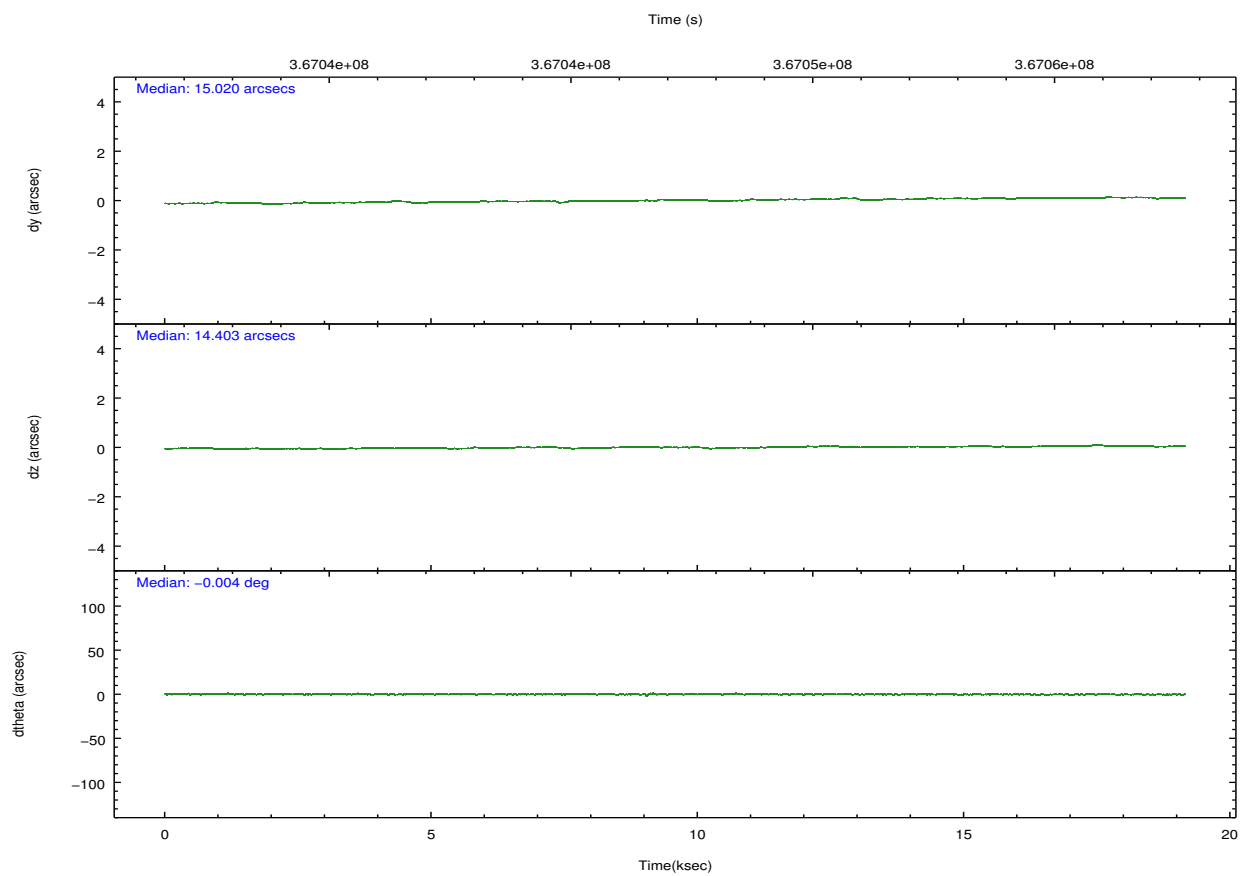
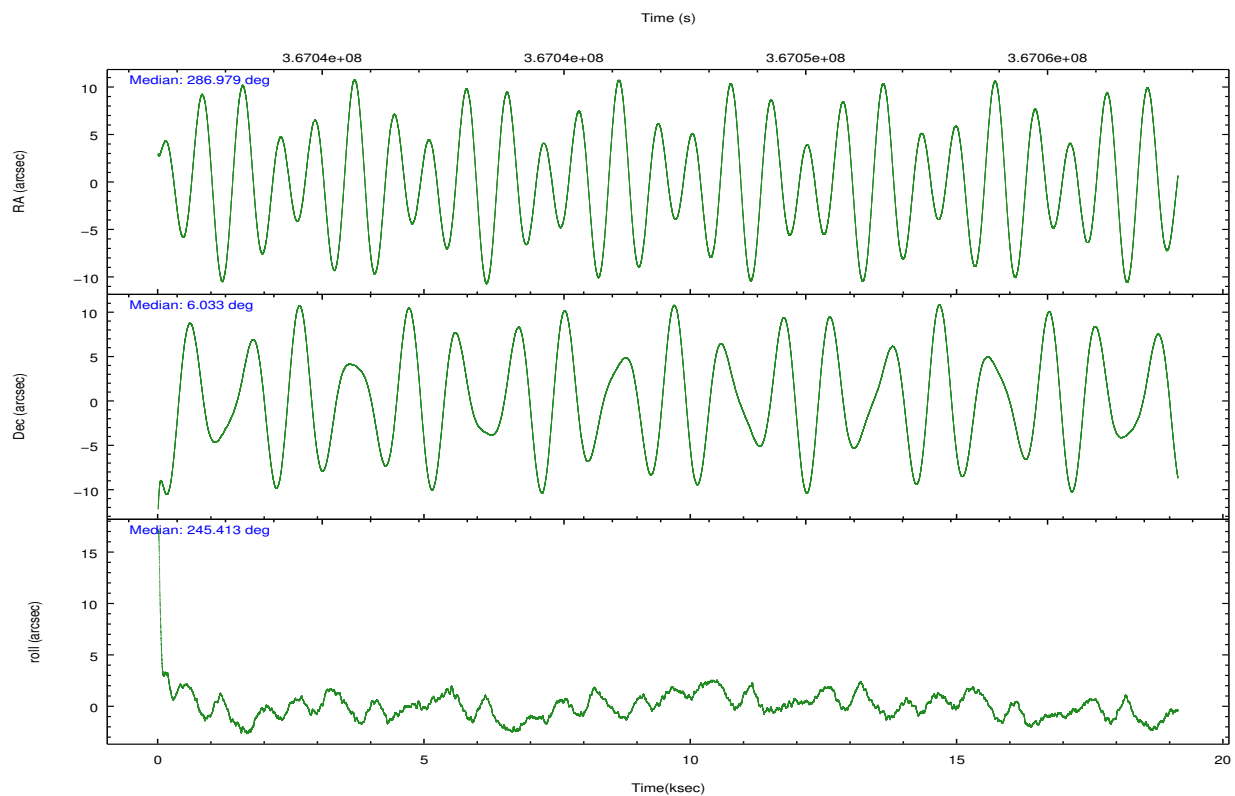
	ccd 2	ccd 3	ccd 5	ccd 6	ccd 7	ccd 8		ccd 2	ccd 3	ccd 5	ccd 6	ccd 7	ccd 8
level 1 events	170434	154635	209254	161213	156397	203889	grade 0 events	5597	5443	12706	6012	7749	14521
rejected events	155363	140081	100798	145164	81003	153127		3%	3%	6%	3%	4%	7%
rejected %	91%	90%	48%	90%	51%	75%	grade 1 events	91	97	761	87	262	168
								0%	0%	0%	0%	0%	0%
							grade 2 events	3877	3234	34333	3778	16507	12648
								2%	2%	16%	2%	10%	6%
							grade 3 events	1570	1707	5000	1729	7123	5783
								0%	1%	2%	1%	4%	2%
							grade 4 events	1665	1600	4451	1635	7197	5273
								0%	1%	2%	1%	4%	2%
							grade 5 events	4640	5509	17206	5585	16741	8577
								2%	3%	8%	3%	10%	4%
							grade 6 events	2694	2886	54608	3299	38573	13649
								1%	1%	26%	2%	24%	6%
							grade 7 events	150300	134159	80189	139088	62245	143270
								88%	86%	38%	86%	39%	70%

## 2.2 Compared Parameters

Parameter	Planned	Actual	Parameter	Planned	Actual
Instrument	ACIS	ACIS	Obspar format version number	7	7
Detector	ACIS-235678	ACIS-235678	Obspar file type	PREDICTED	ACTUAL
Grating	NONE	NONE	Obspar update status	NONE	UPDATED
Data mode	VFAINT	VFAINT	CCD I0 on	N	N
Observation mode	POINTING	POINTING	CCD I1 on	N	N
[deg] Pointing RA	286.976233	286.9792086901255	CCD I2 on	O3	Y
[deg] Pointing Dec	6.059915	6.032709526876891	CCD I3 on	O4	Y
[deg] Pointing Roll	245.264519	245.4208456653516	CCD S0 on	N	N
[mm] SIM focus pos	-0.684267	-0.6828225247311905	CCD S1 on	O5	Y
[mm] SIM defocus	0	0.001444936568705701	CCD S2 on	O1	Y
[mm] SIM translation stage pos	-190.132523	-190.145094680475	CCD S3 on	Y	Y
[mm] SIM translation stage offset	0	0.01257209746719923	CCD S4 on	O2	Y
[s] Observation start time (MET)	367037724.184000	367036454.05003	CCD S5 on	N	N
Observation start date	2009-08-19T02:54:18	2009-08-19T02:34:14	Number of optional ACIS chips dropped	0	0
[s] Observation end time (MET)	367056724.184000	367056959.17606	On-chip summing requested	N	N
Observation end date	2009-08-19T08:10:58	2009-08-19T08:15:59	Subarray requested	NONE	NONE
Read mode	TIMED	TIMED	Alternating exposures requested	N	N
			[s] Primary exposure time	0.000000	3.2

## 2.3 Aspect



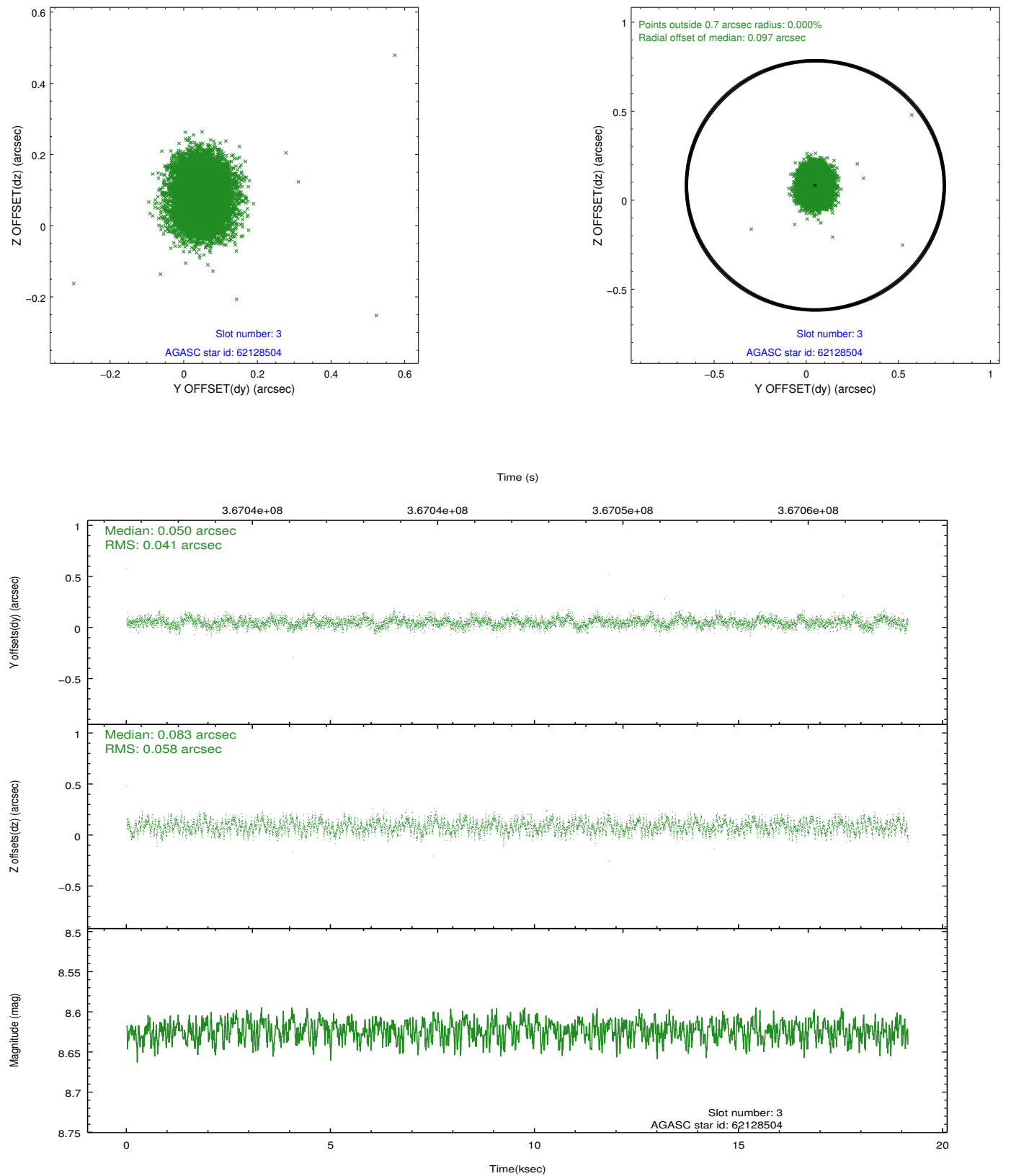


### Slot Statistics

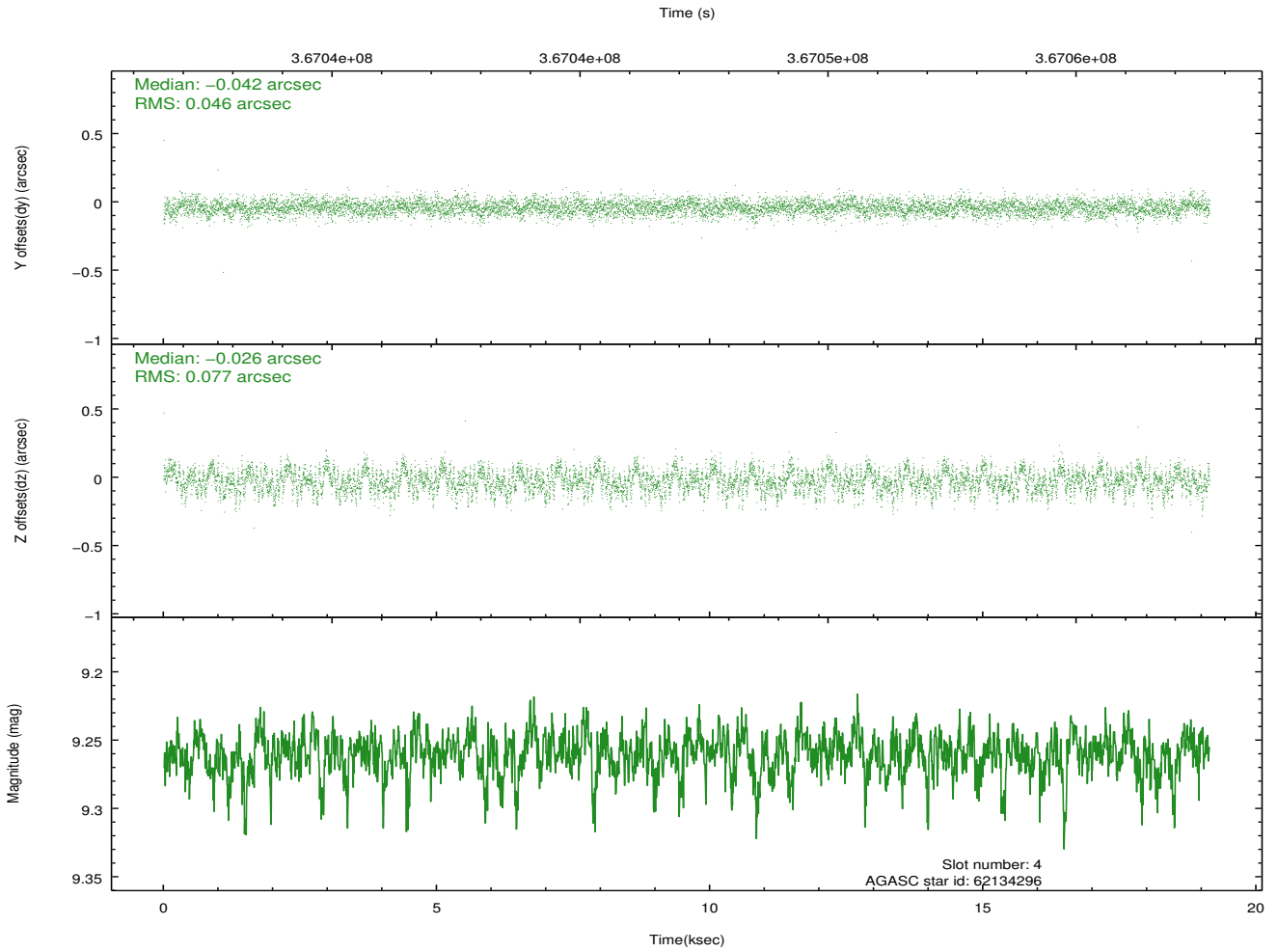
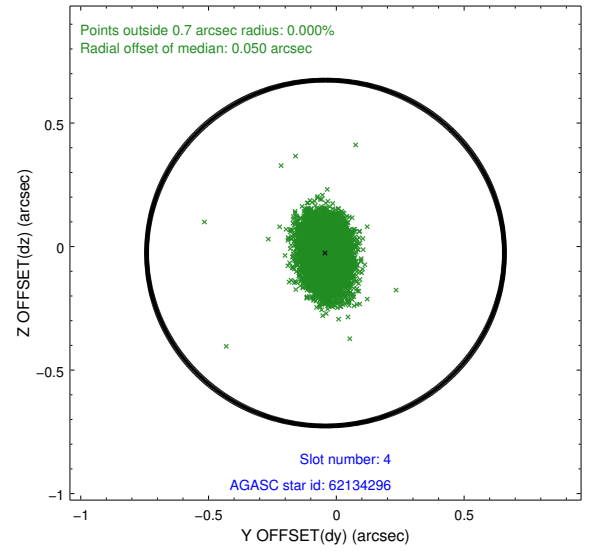
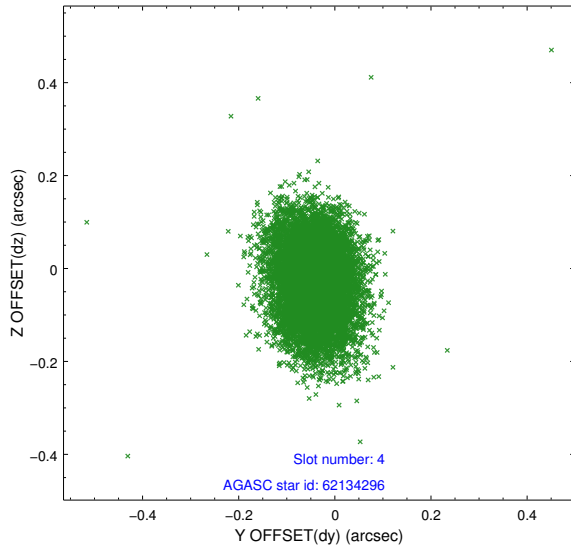
slot	status	id	mag	n_pts	med_dy	med_dz	dr1	dr2	ra	dec	mean_y	mean_z
0	FID	ACIS-S-2	6.93	4670	-0.086	-0.041	0.007	0.012	0.000000	0.000000	-768.07	-1735.70
1	FID	ACIS-S-4	7.02	4670	0.195	0.053	0.006	0.011	0.000000	0.000000	2145.38	172.67
2	FID	ACIS-S-5	7.04	4670	-0.140	-0.003	0.006	0.011	0.000000	0.000000	-1820.72	166.50
3	GUIDE	62128504	8.62	9332	0.050	0.083	0.076	0.118	286.637438	6.282247	-219.51	-1435.86
4	GUIDE	62134296	9.26	9330	-0.042	-0.026	0.094	0.156	286.341143	6.153387	645.27	-2205.90
5	GUIDE	62134776	9.14	9331	0.091	0.047	0.102	0.161	286.572119	6.645054	-1308.40	-2194.25
6	GUIDE	62271584	8.71	9336	-0.093	-0.017	0.066	0.105	287.218405	6.430921	-1575.61	227.66
7	GUIDE	61738712	7.85	9271	-0.003	-0.094	0.069	0.109	287.287123	5.498280	1369.88	1858.19

## 2.4 Star Slots

### 2.4.1 Slot 3

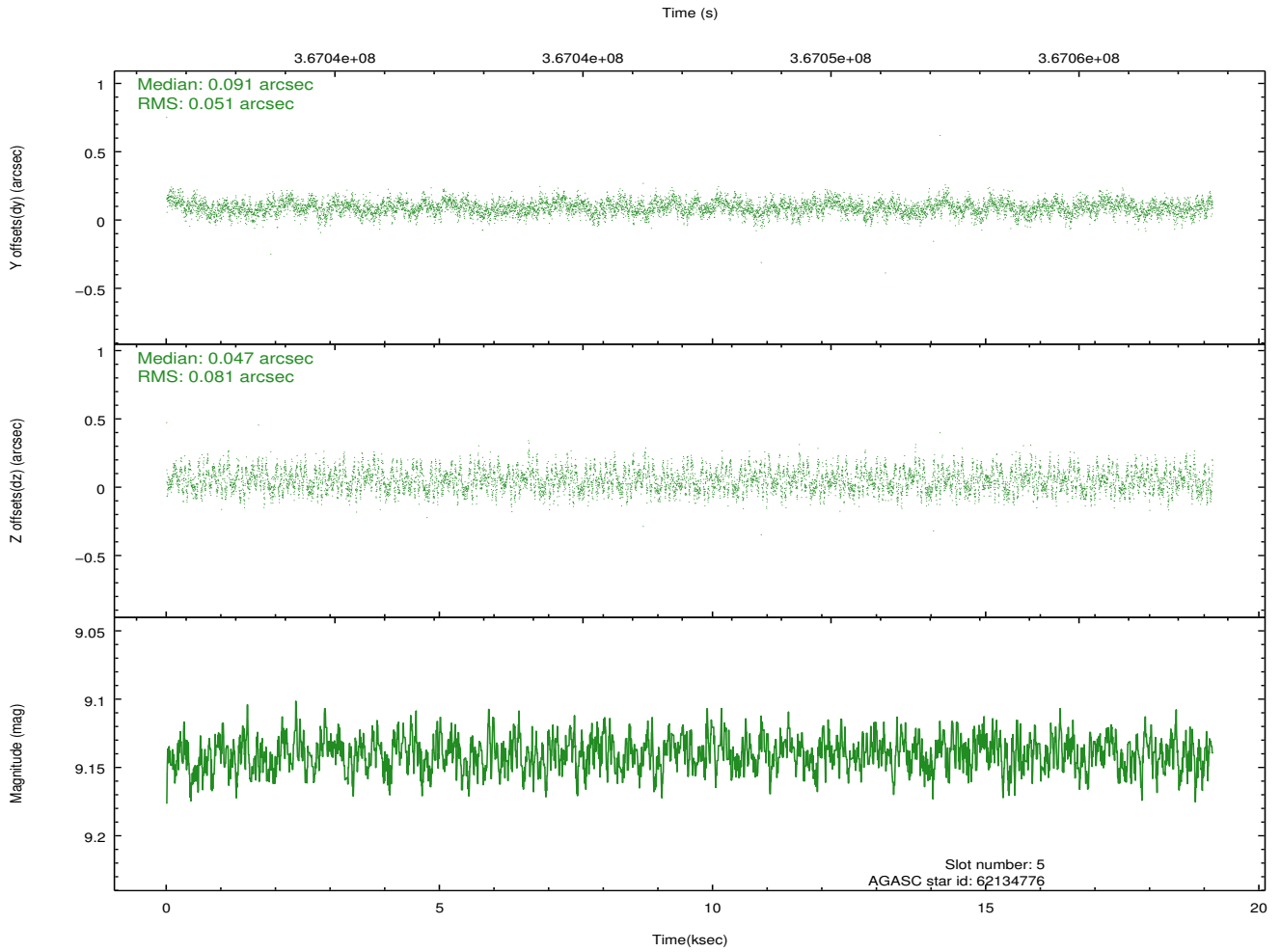
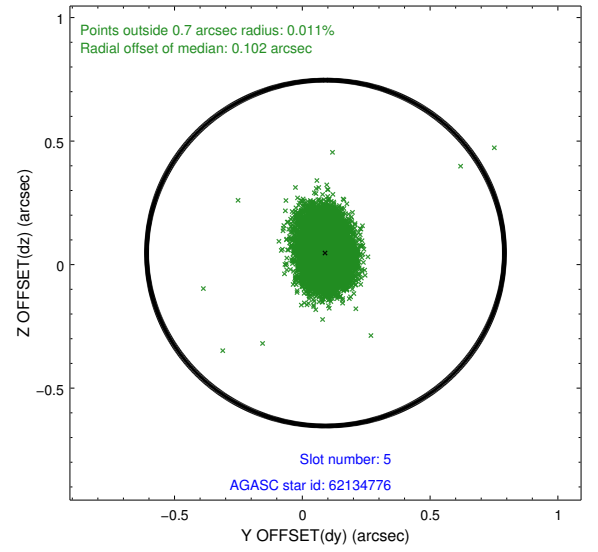
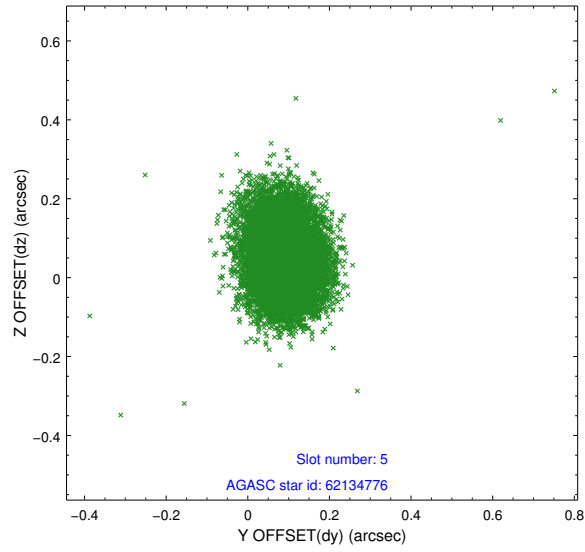


## 2.4.2 Slot 4

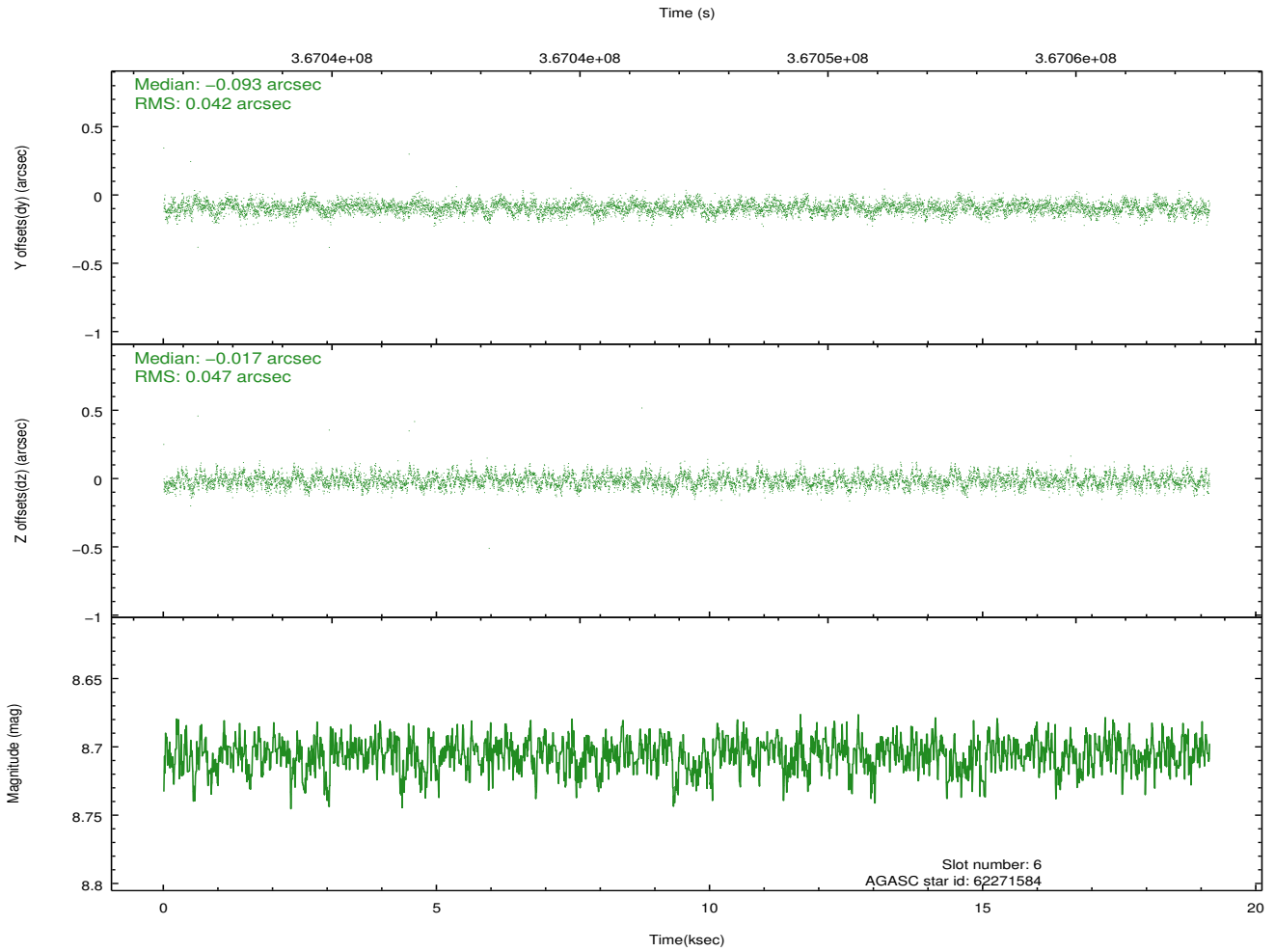
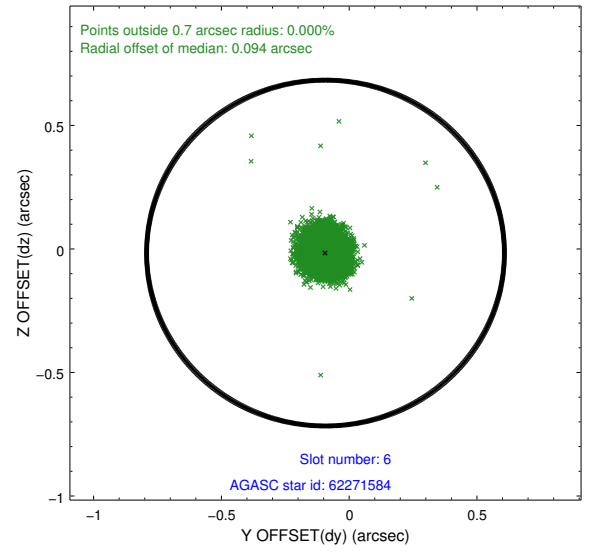
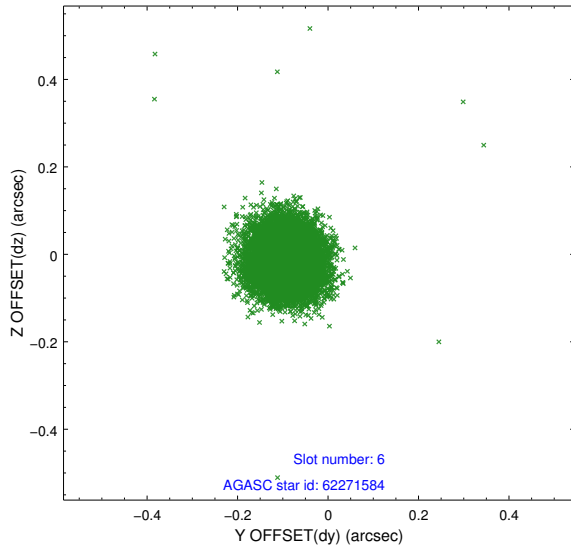




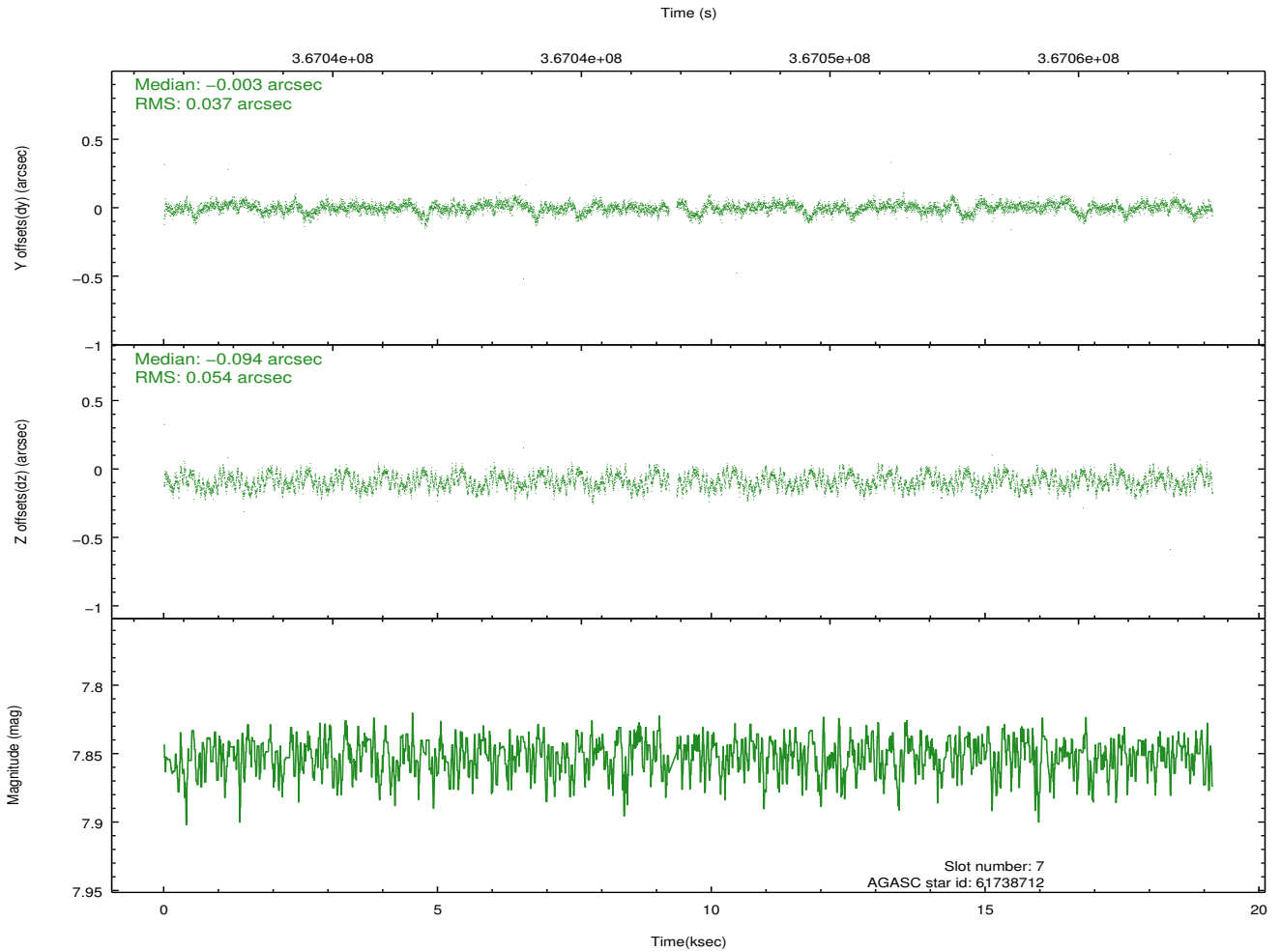
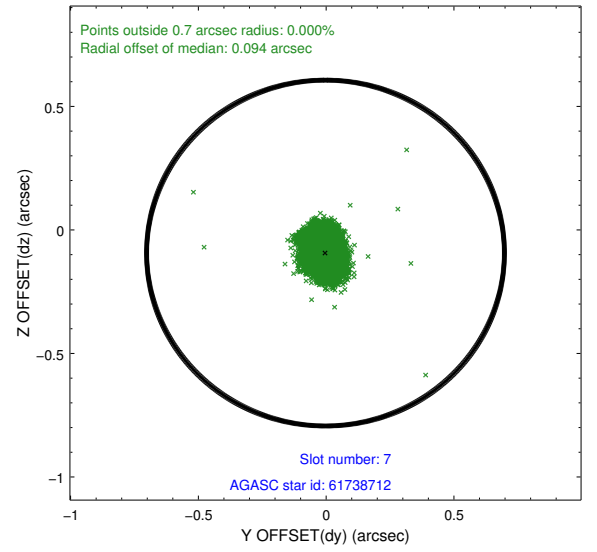
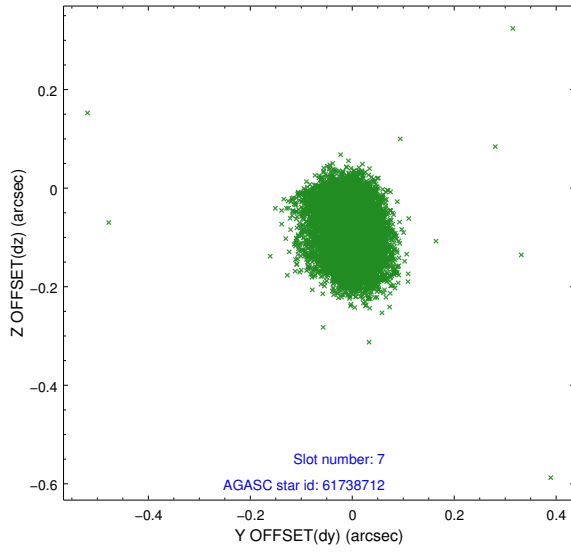
### 2.4.3 Slot 5



## 2.4.4 Slot 6

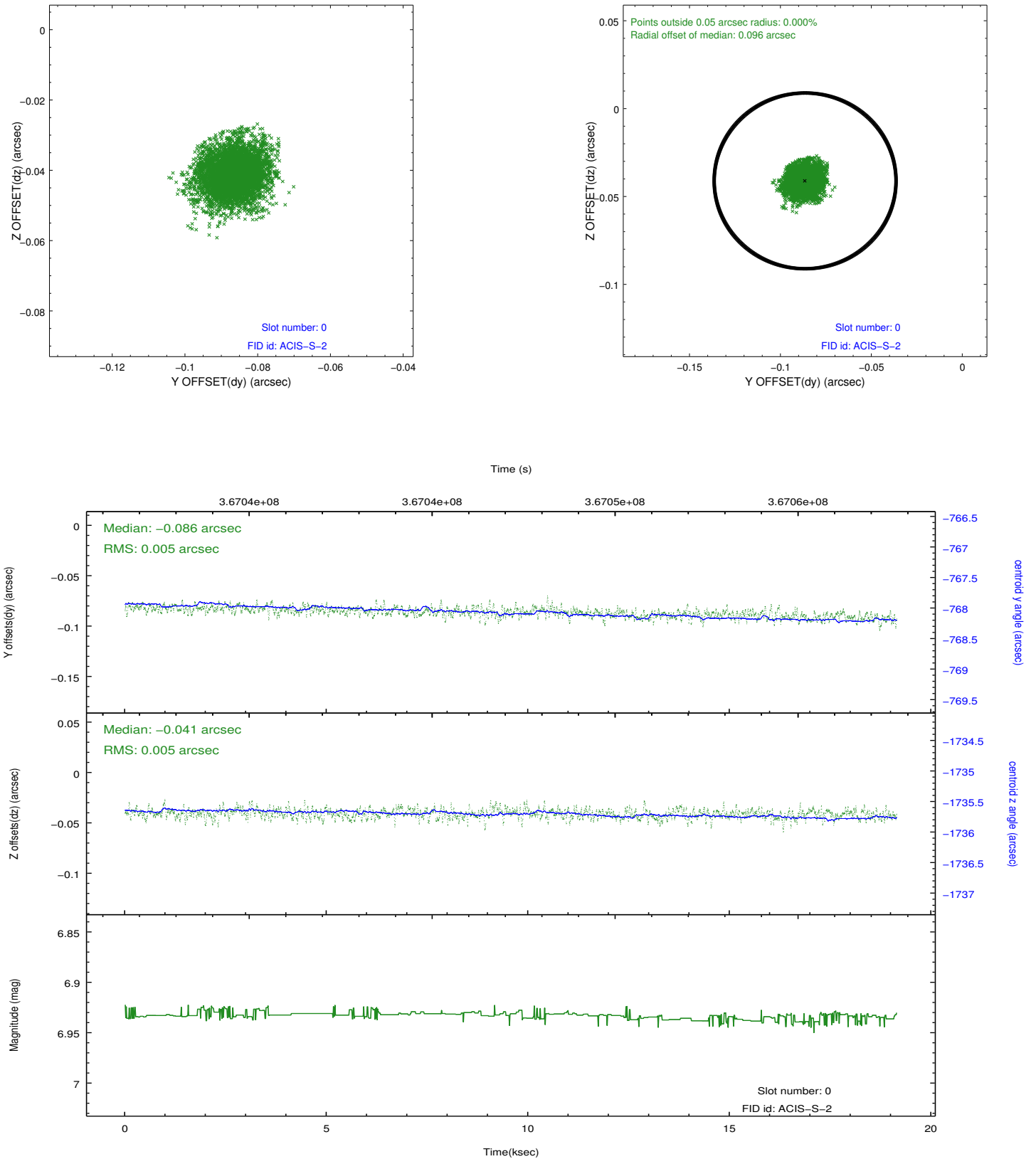


## 2.4.5 Slot 7

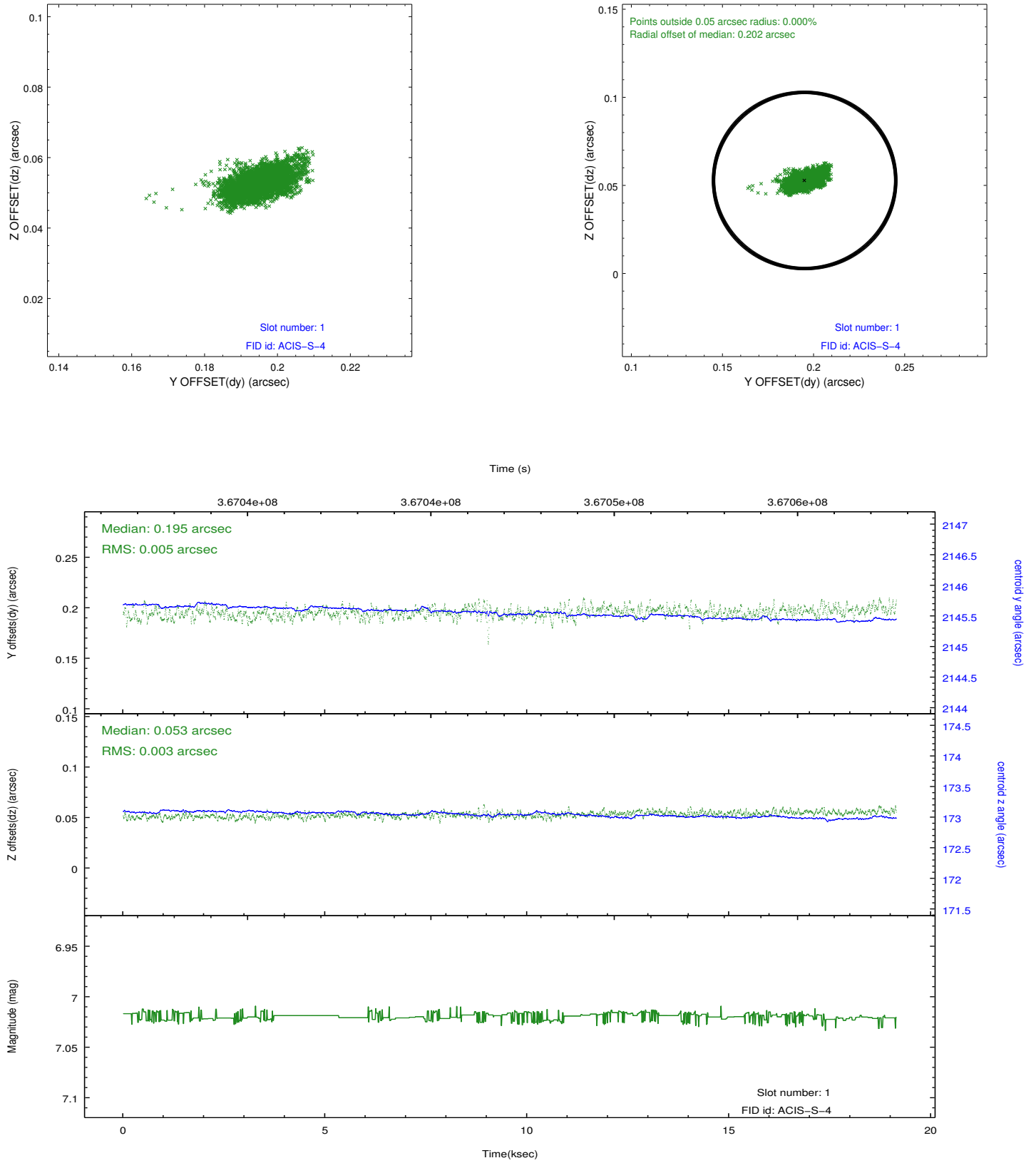


## 2.5 FID Slots

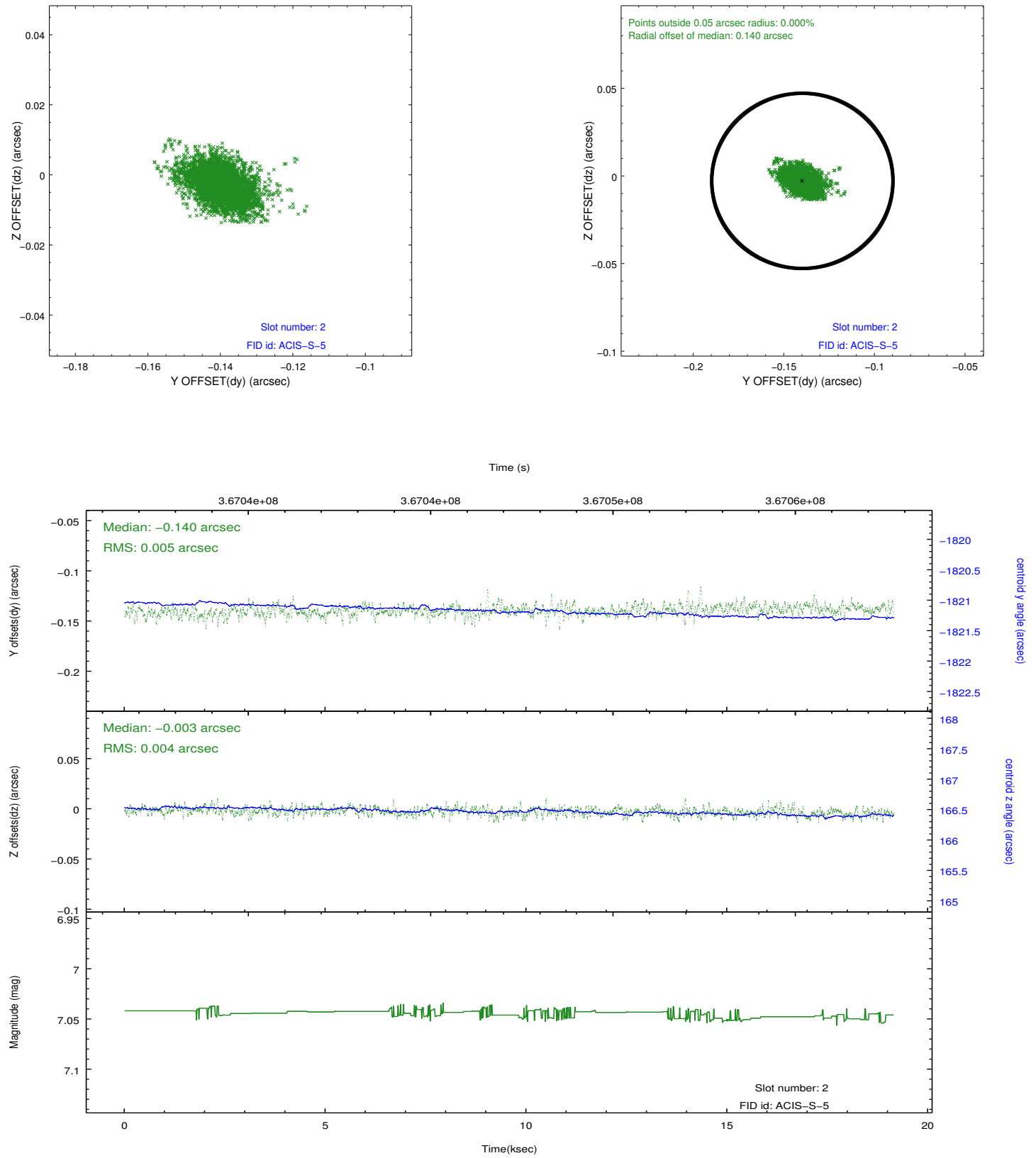
### 2.5.1 Slot 0



## 2.5.2 Slot 1



### 2.5.3 Slot 2



## **A Summary**

### **A.1 Status**

V&V Scientist	Jen Lauer
V&V Date (YYYY-MM-DD)	2012.06.14
V&V Edition	1
V&V Disposition and Status	OK
V&V Charge Time	19.1391999

### **A.2 Comments**