

V&V Reference Report

L2 ASCDS Version : 8.4.5

Observation 11007 - L2 Version 3
Chandra X-Ray Center

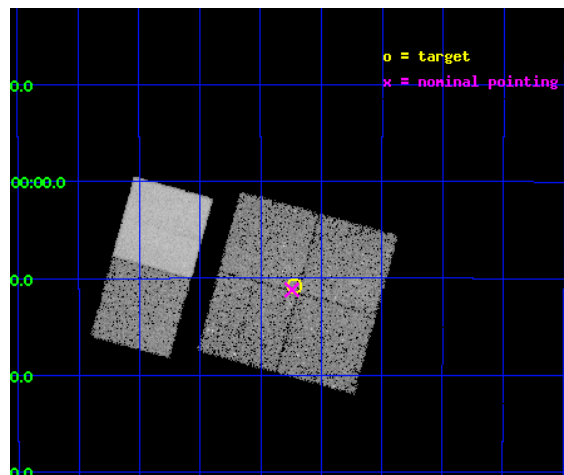
L2 Processing Date : Jul 2 2012

Contents

1	Front	2
2	OBI	3
2.1	OBI	3
2.1.1	Images	3
2.1.2	Bias	3
2.1.3	Parameters	4
2.1.4	Events	4
2.2	Compared Parameters	5
2.3	Aspect	6
2.4	Star Slots	9
2.4.1	Slot 3	9
2.4.2	Slot 4	10
2.4.3	Slot 5	11
2.4.4	Slot 6	12
2.4.5	Slot 7	13
2.5	FID Slots	14
2.5.1	Slot 0	14
2.5.2	Slot 1	15
2.5.3	Slot 2	16
A	Summary	17
A.1	Status	17
A.2	Comments	17

1 Front

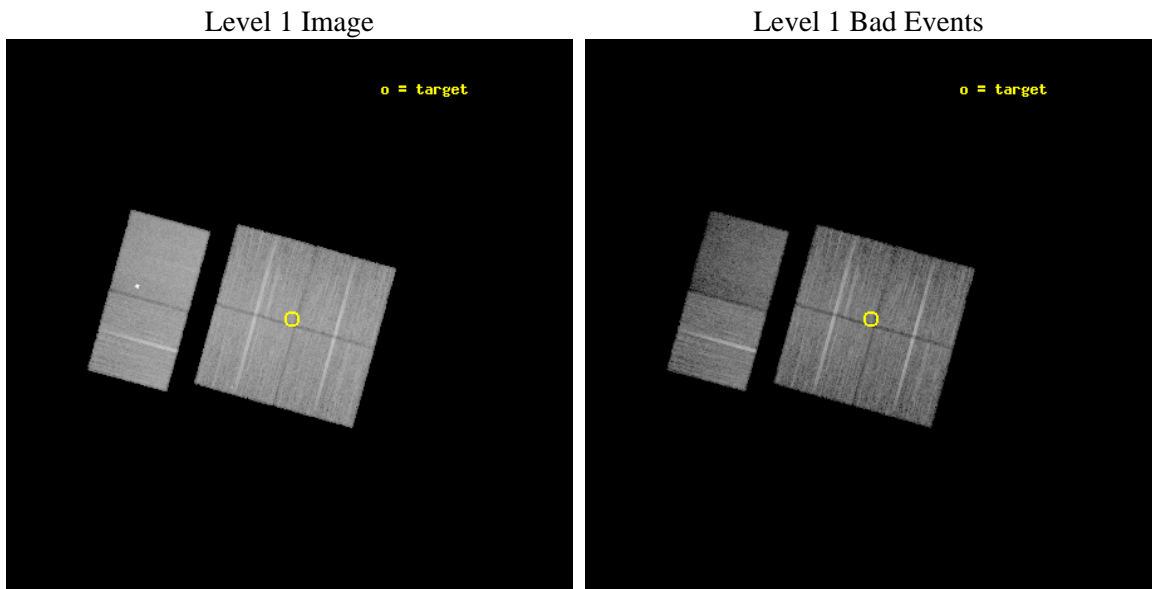
seq_num	200638	Sequence number
obs_id	11007	Observation id
title	X-ray Census of Young Low-Mass Stars Candidates Associated with Gomez's Hamburger	Proposal title
observer	Dr Nicolas Grosso	Principal investigator
object	IRAS 18059-3211	Source name
dtcycle	0	
cycle	P	events from which exps? Prim/Second/Both
ra_targ	272.305417	Observer's specified target RA [deg]
dec_targ	-32.18	Observer's specified target Dec [deg]
ra_nom	272.31062853984	Nominal RA [deg]
dec_nom	-32.186798394669	Nominal Dec [deg]
roll_nom	285.48912416281	Nominal Roll [deg]
revision	3	Processing version of data
ontime	17046.358906329	Sum of GTIs [s]
livetime	16830.507645772	Livetime [s]
ontime0	17043.04071039	Sum of GTIs [s]
ontime1	17043.081750631	Sum of GTIs [s]
ontime2	17046.358896375	Sum of GTIs [s]
ontime3	17046.358906329	Sum of GTIs [s]
ontime6	17046.358906209	Sum of GTIs [s]
ontime7	17049.599936545	Sum of GTIs [s]
l2events	117906	Number of level 2 events



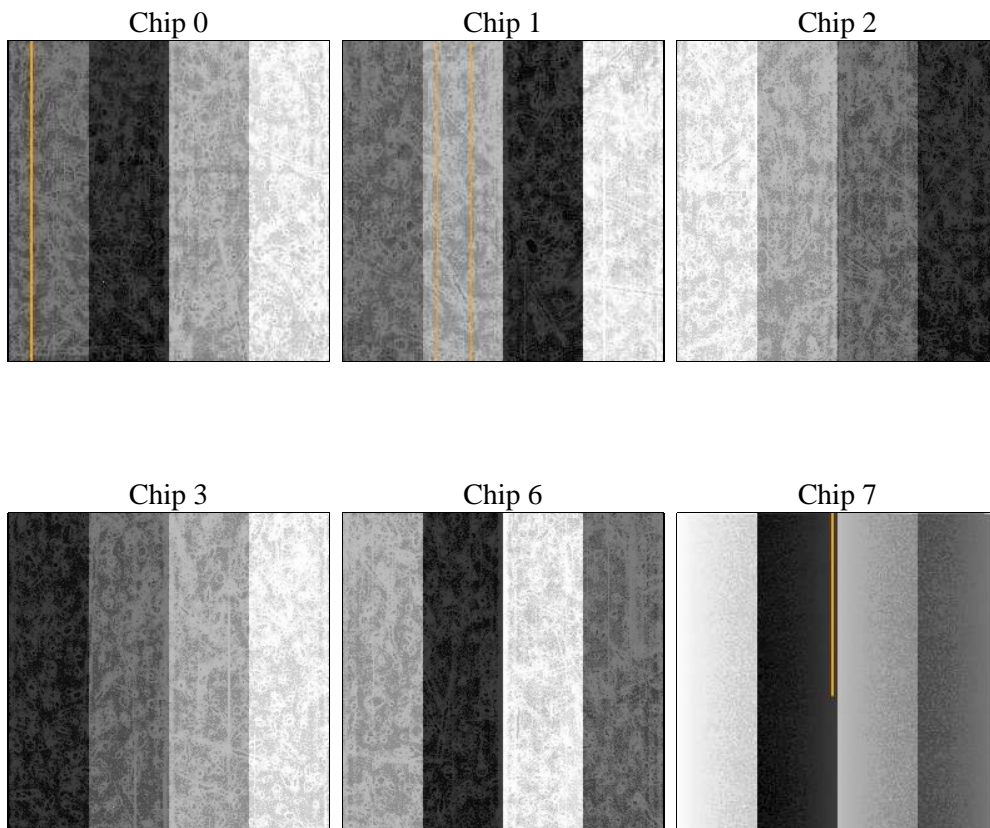
2 OBI

2.1 OBI

2.1.1 Images



2.1.2 Bias



2.1.3 Parameters

obi_num	0	Obi number	sched_exp_time	17000.000000	[s] Scheduled observation exposure time
ascdsver	8.4.5	Processing system revision	ontime	17046.358906329	Sum of GTIs [s]
caldsver	4.5.0	 	ontime0	17043.04071039	Sum of GTIs [s]
date	2012-07-02T12:56:07	Date and time of file creation	ontime1	17043.081750631	Sum of GTIs [s]
revision	3	Processing version of data	ontime2	17046.358896375	Sum of GTIs [s]
			ontime3	17046.358906329	Sum of GTIs [s]
			ontime6	17046.358906209	Sum of GTIs [s]
			ontime7	17049.599936545	Sum of GTIs [s]
			l1events	719130	Number of level 1 events

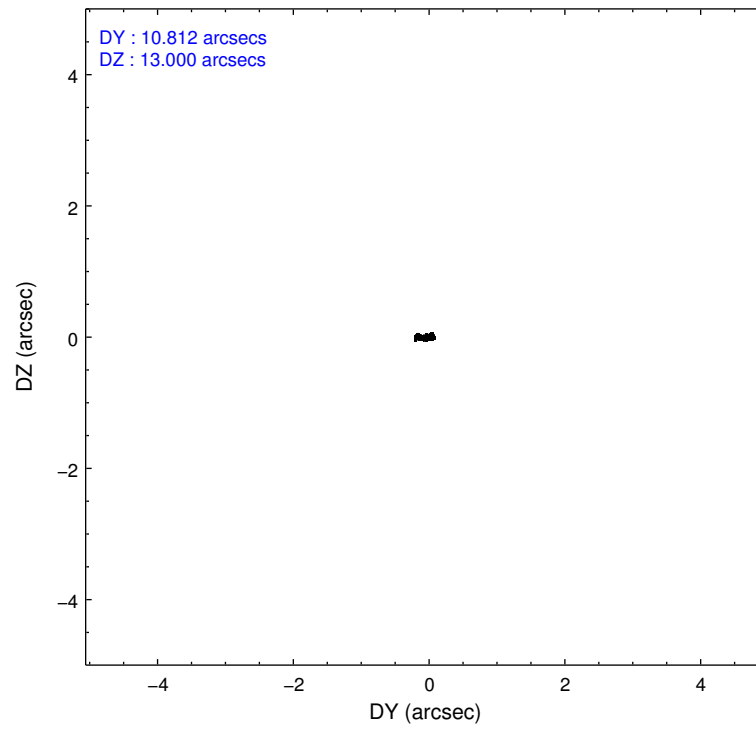
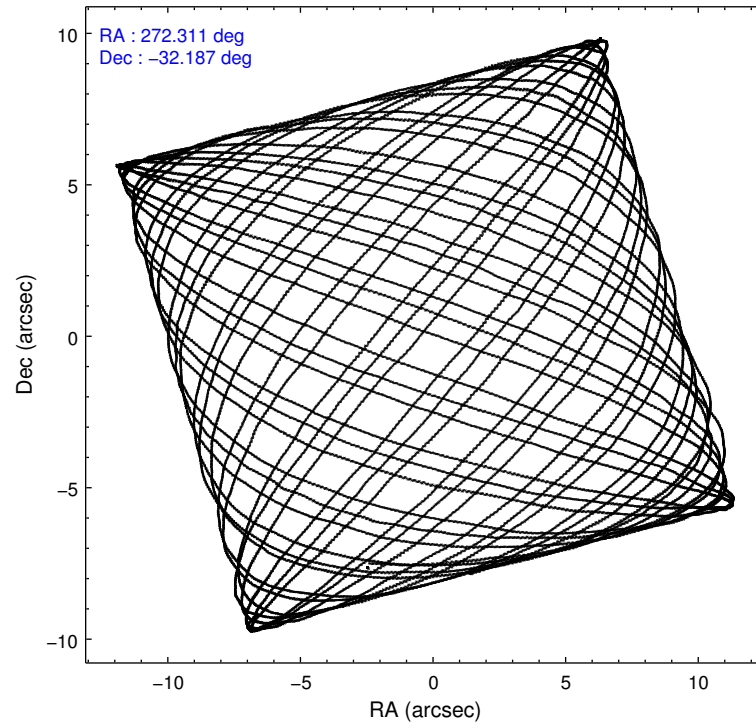
2.1.4 Events

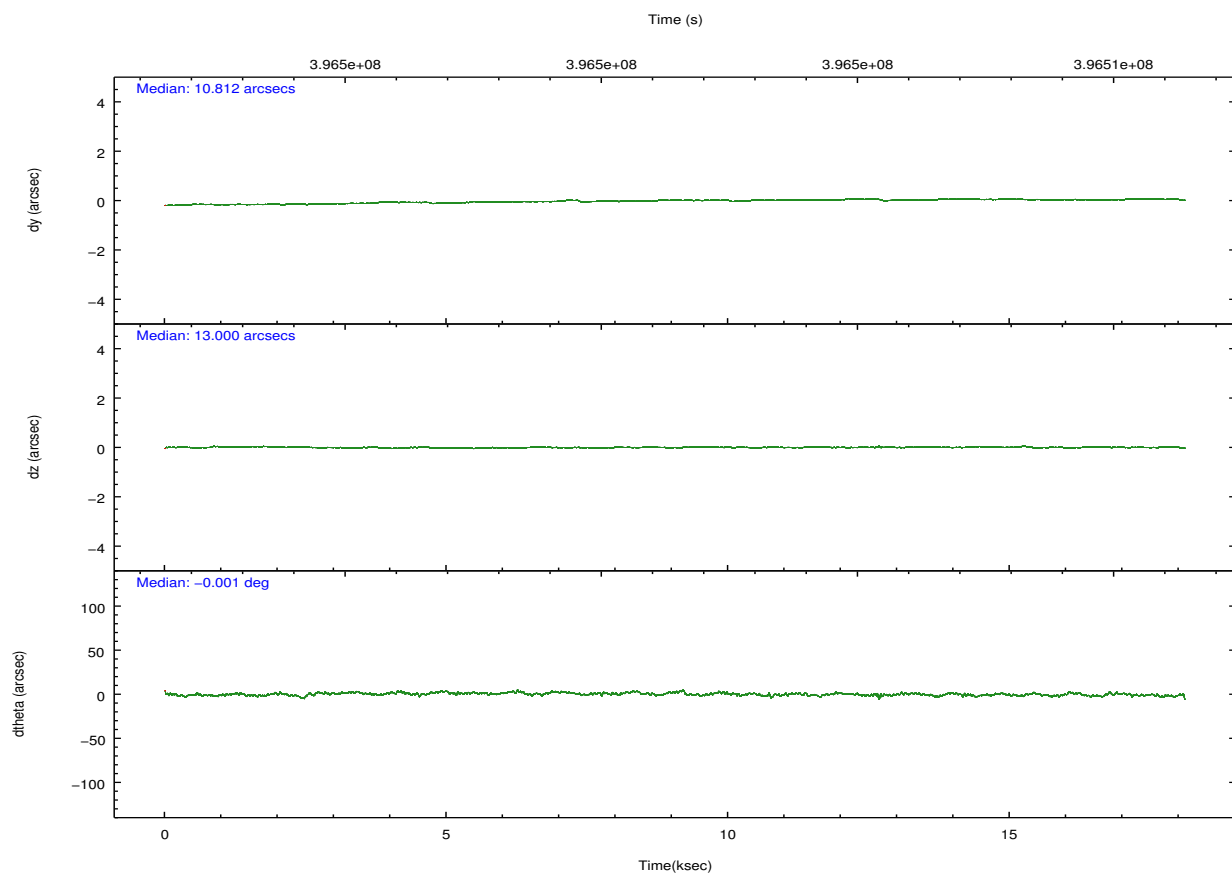
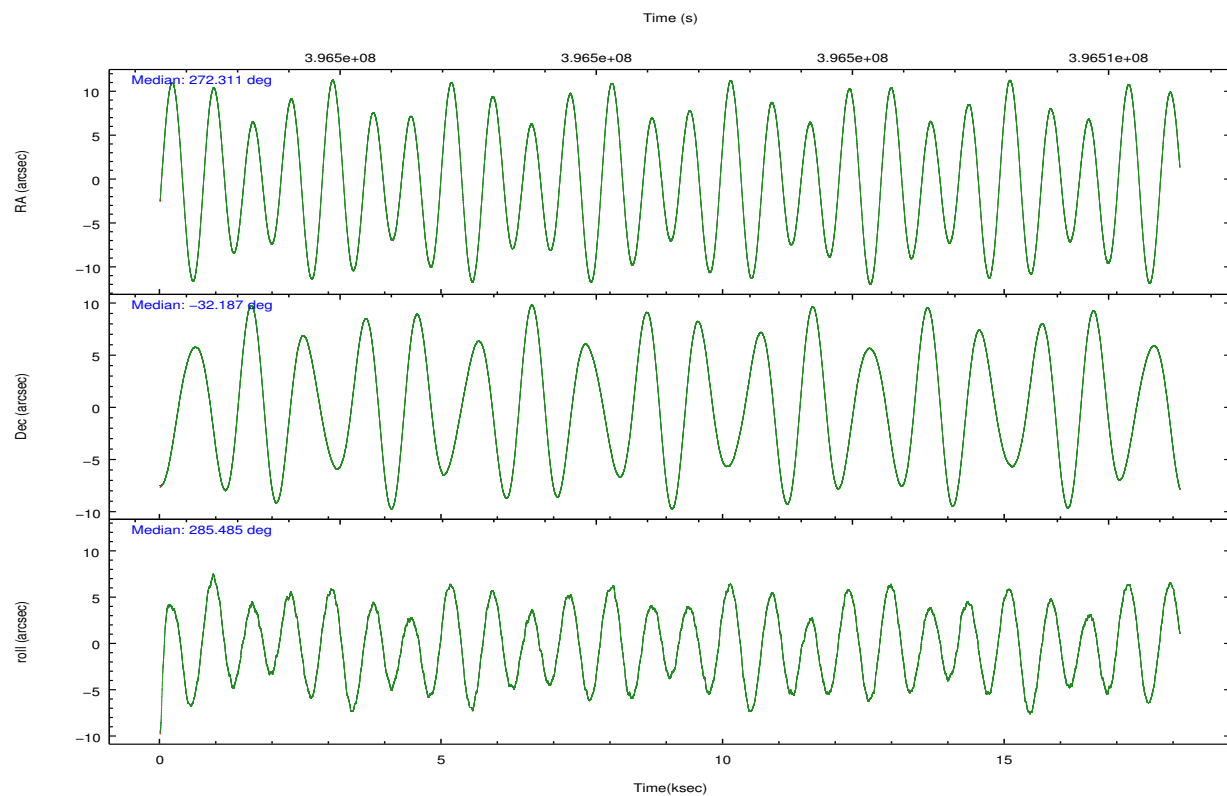
	ccd 0	ccd 1	ccd 2	ccd 3	ccd 6	ccd 7		ccd 0	ccd 1	ccd 2	ccd 3	ccd 6	ccd 7
level 1 events	107626	113242	122786	118538	125301	131637	grade 0 events	5382	5722	5651	5436	5583	11764
rejected events	94001	98721	109242	105380	111342	64234		5%	5%	4%	4%	4%	8%
rejected %	87%	87%	88%	88%	88%	48%	grade 1 events	68	64	88	84	73	192
								0%	0%	0%	0%	0%	0%
							grade 2 events	3223	3100	3131	2772	3042	13514
								2%	2%	2%	2%	2%	10%
							grade 3 events	1404	1512	1243	1328	1246	5676
								1%	1%	1%	1%	0%	4%
							grade 4 events	1252	1474	1329	1301	1385	5550
								1%	1%	1%	1%	1%	4%
							grade 5 events	3990	4277	3791	4693	4898	13330
								3%	3%	3%	3%	3%	10%
							grade 6 events	2368	2714	2190	2327	2703	30916
								2%	2%	1%	1%	2%	23%
							grade 7 events	89939	94379	105363	100597	106371	50695
								83%	83%	85%	84%	84%	38%

2.2 Compared Parameters

Parameter	Planned	Actual	Parameter	Planned	Actual
Instrument	ACIS	ACIS	Obspar format version number	7	7
Detector	ACIS-012367	ACIS-012367	Obspar file type	PREDICTED	ACTUAL
Grating	NONE	NONE	Obspar update status	NONE	UPDATED
Data mode	VFAINT	VFAINT	CCD I0 on	Y	Y
Observation mode	POINTING	POINTING	CCD I1 on	Y	Y
[deg] Pointing RA	272.287334	272.3106285398384	CCD I2 on	Y	Y
[deg] Pointing Dec	-32.167597	-32.18679839466908	CCD I3 on	Y	Y
[deg] Pointing Roll	285.268028	285.4891241628126	CCD S0 on	N	N
[mm] SIM focus pos	-0.782348	-0.7809083437167272	CCD S1 on	N	N
[mm] SIM defocus	0	0.001439871863259334	CCD S2 on	O1	Y
[mm] SIM translation stage pos	-233.592463	-233.5874344608287	CCD S3 on	O2	Y
[mm] SIM translation stage offset	0	-0.005018542100998502	CCD S4 on	N	N
[s] Observation start time (MET)	396493505.184000	396492039.41657	CCD S5 on	N	N
Observation start date	2010-07-26T01:03:59	2010-07-26T00:40:39	Number of optional ACIS chips dropped	0	0
[s] Observation end time (MET)	396510505.184000	396510938.88003	On-chip summing requested	N	N
Observation end date	2010-07-26T05:47:19	2010-07-26T05:55:38	Subarray requested	NONE	NONE
Read mode	TIMED	TIMED	Alternating exposures requested	N	N
			[s] Primary exposure time	0.000000	3.2

2.3 Aspect



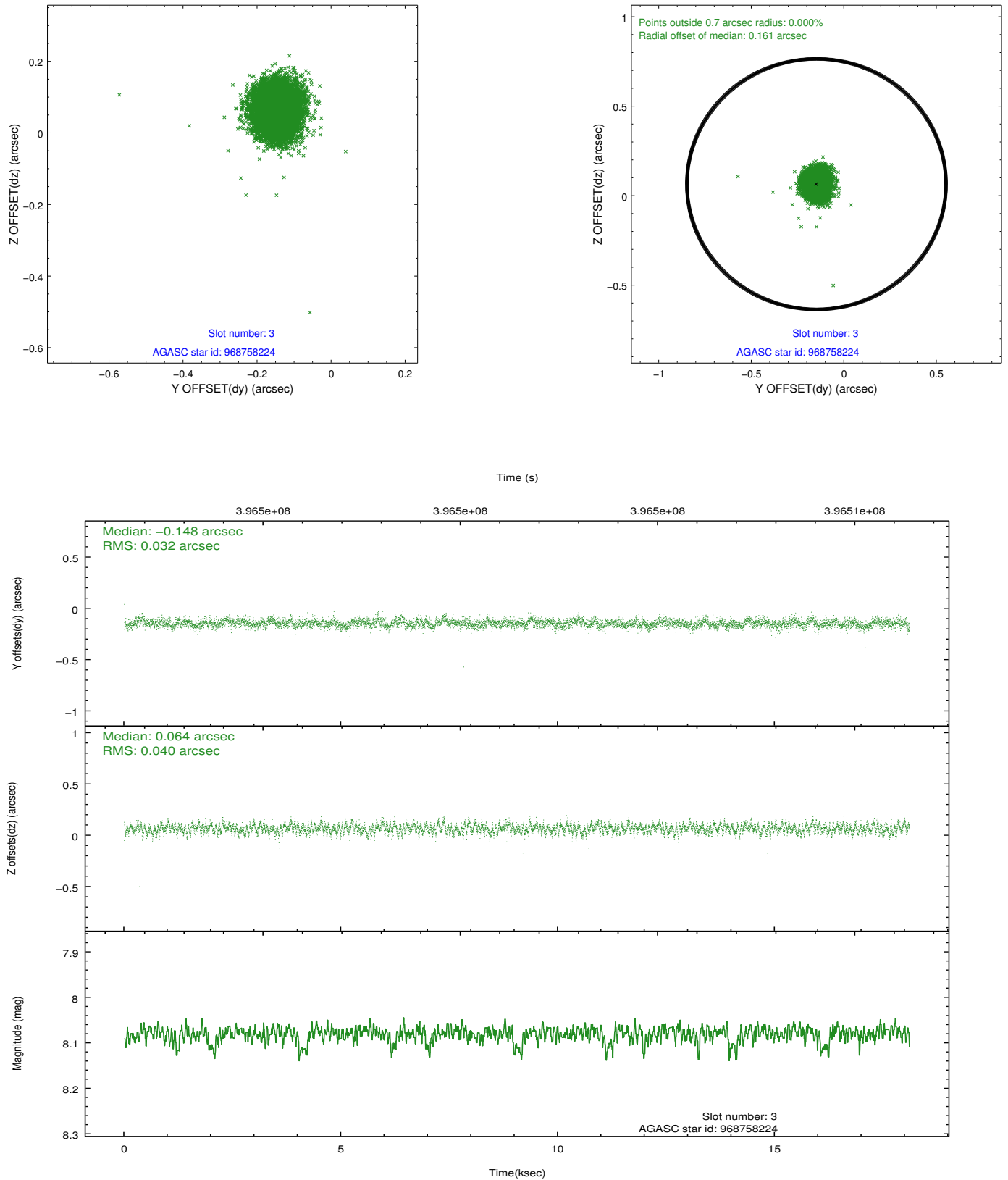


Slot Statistics

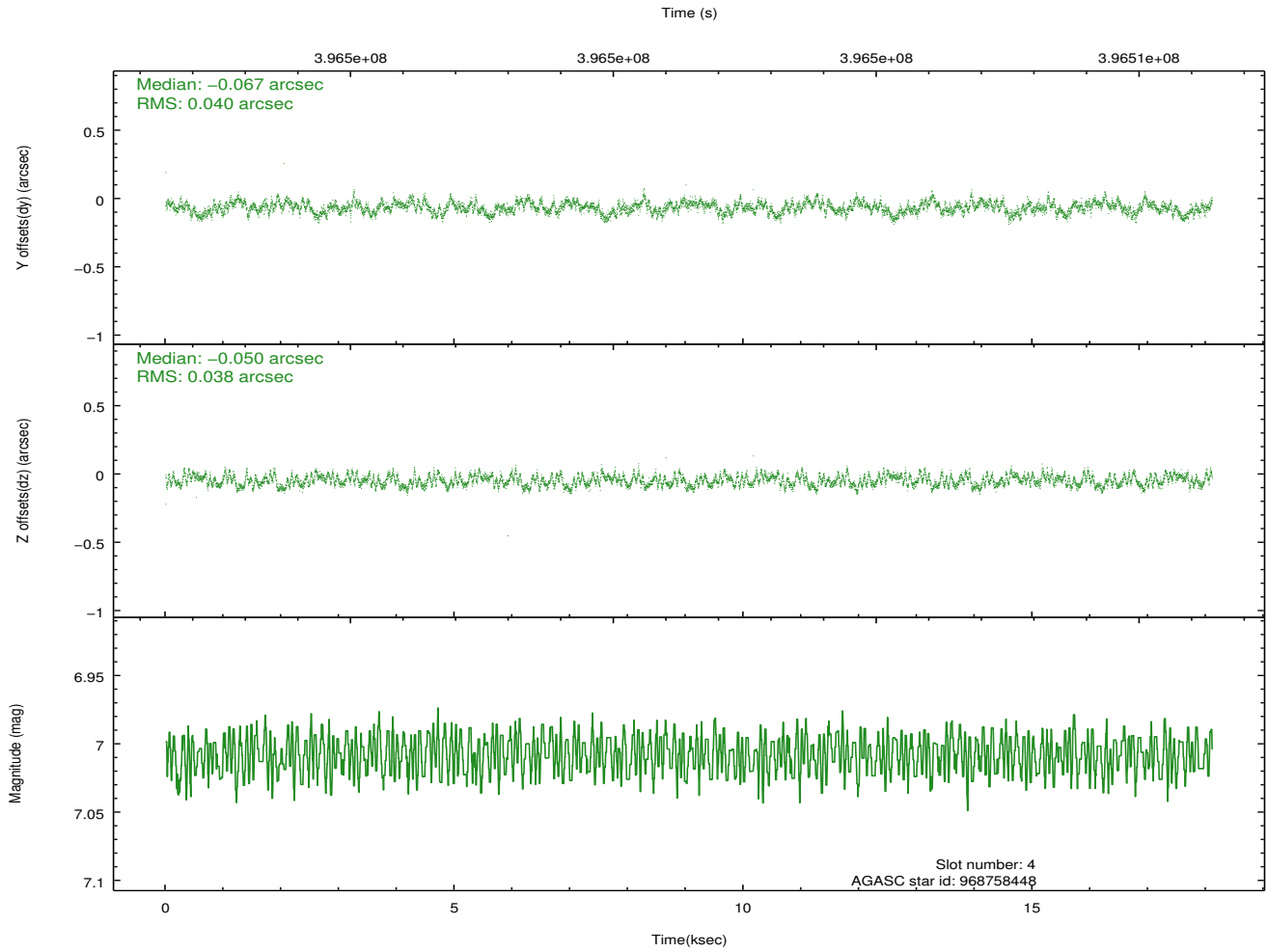
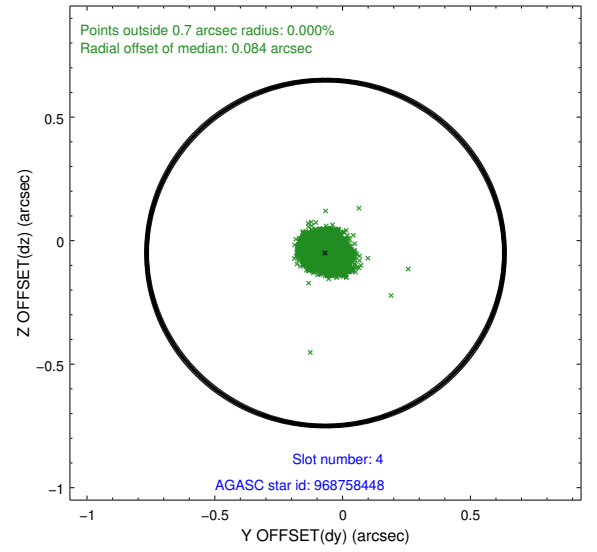
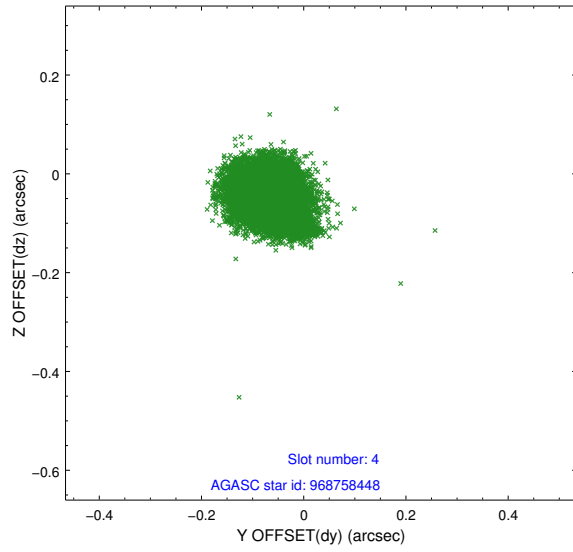
slot	status	id	mag	n_pts	med_dy	med_dz	dr1	dr2	ra	dec	mean_y	mean_z
0	FID	ACIS-I-1	7.07	4417	-0.011	0.063	0.013	0.020	0.000000	0.000000	928.77	-836.50
1	FID	ACIS-I-2	6.97	4416	-0.173	-0.075	0.010	0.016	0.000000	0.000000	-765.35	-843.16
2	FID	ACIS-I-4	7.01	4417	0.086	0.079	0.008	0.014	0.000000	0.000000	2148.68	1063.19
3	GUIDE	968758224	8.08	8831	-0.148	0.064	0.054	0.086	271.897330	-31.668055	-2047.30	-679.79
4	GUIDE	968758448	7.01	8832	-0.067	-0.050	0.059	0.092	271.715344	-31.757374	-1881.23	-1301.60
5	GUIDE	968766608	8.05	8832	-0.072	-0.081	0.054	0.086	271.647356	-31.654110	-2294.10	-1407.04
6	GUIDE	969291496	9.25	8824	0.129	-0.032	0.123	0.198	271.676060	-32.384203	268.29	-1999.56
7	GUIDE	969415768	9.13	8825	0.157	0.104	0.095	0.153	272.909685	-32.404195	1325.48	1599.18

2.4 Star Slots

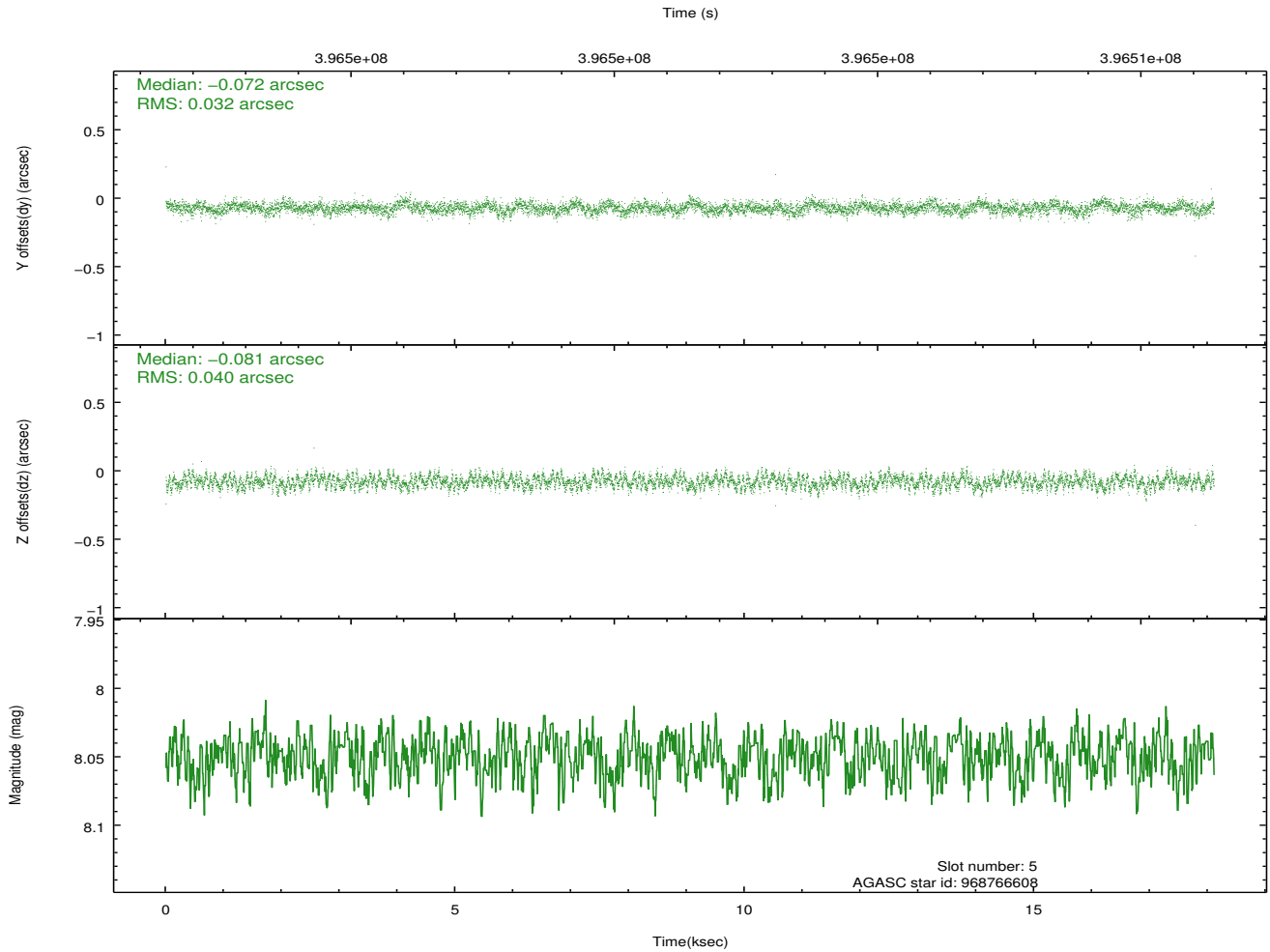
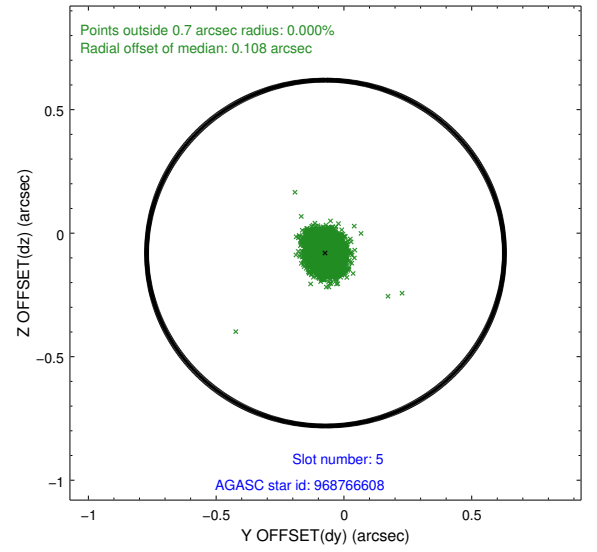
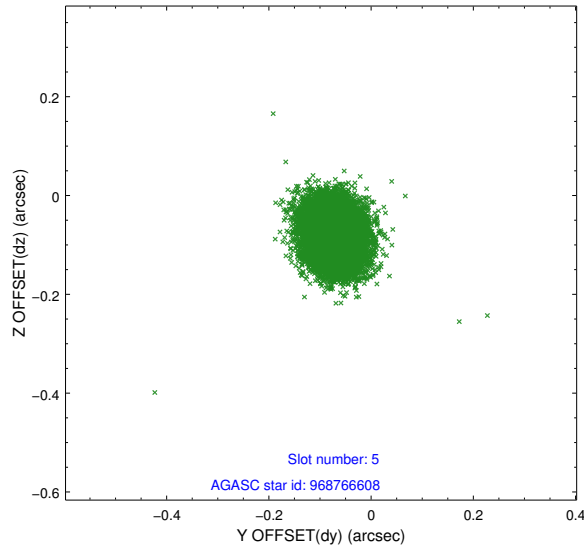
2.4.1 Slot 3



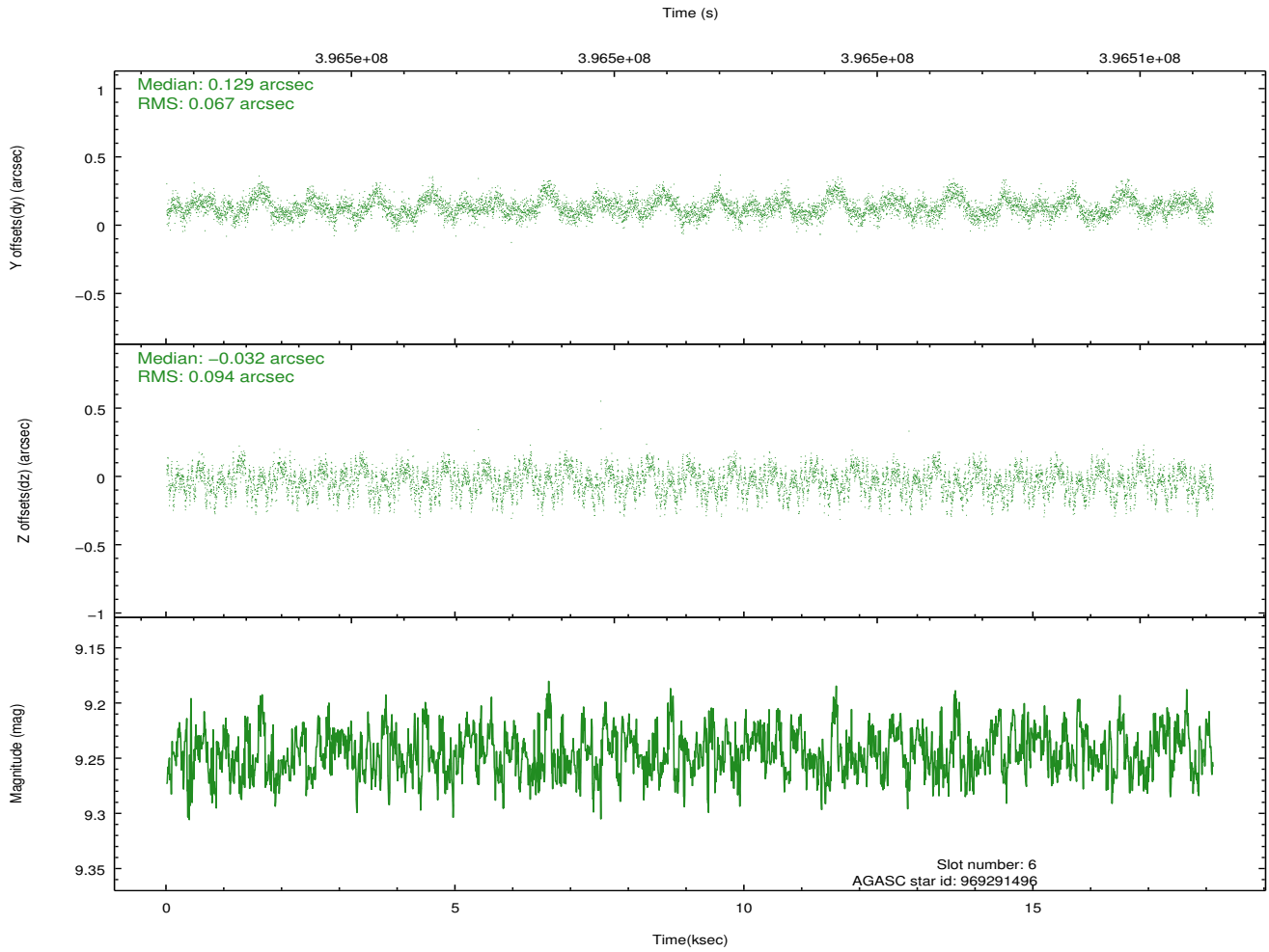
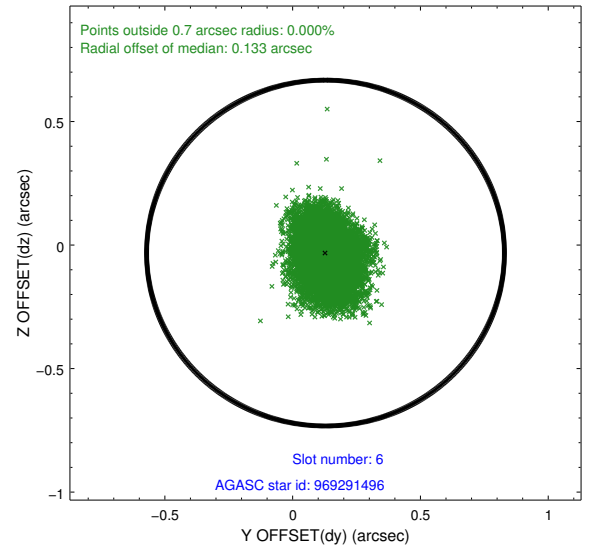
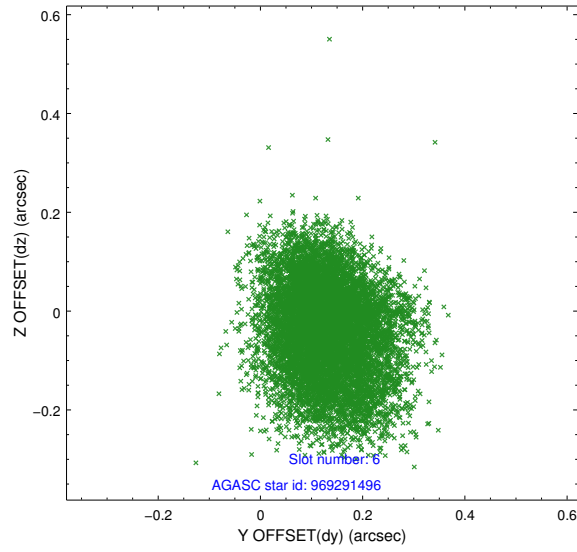
2.4.2 Slot 4



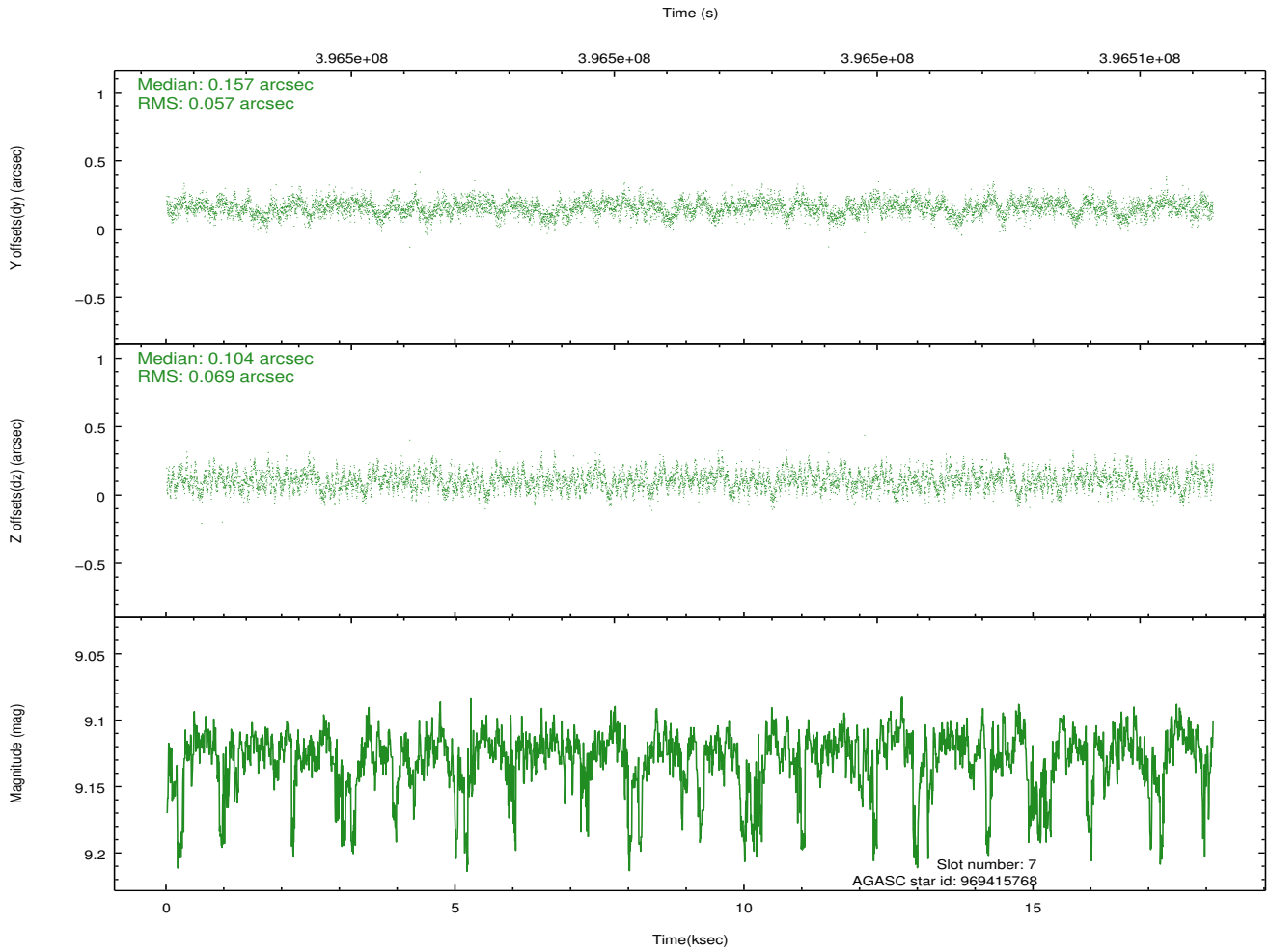
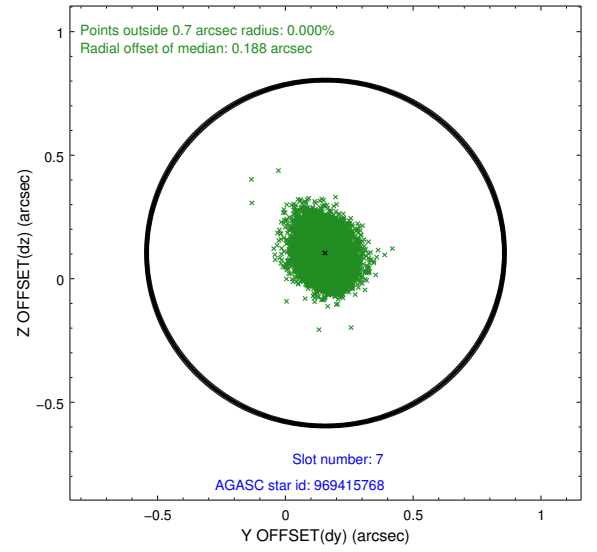
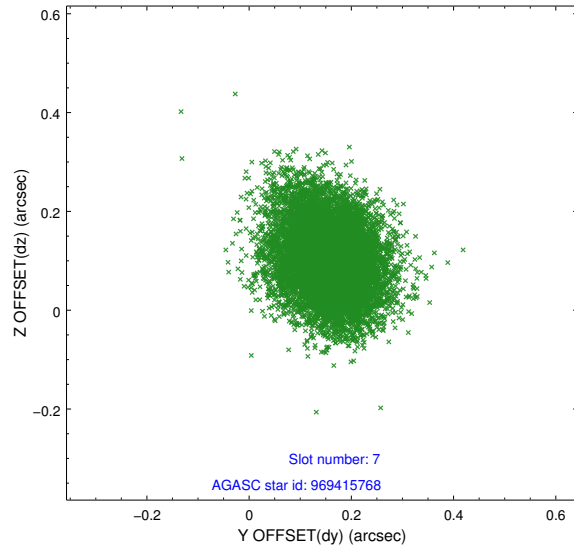
2.4.3 Slot 5



2.4.4 Slot 6

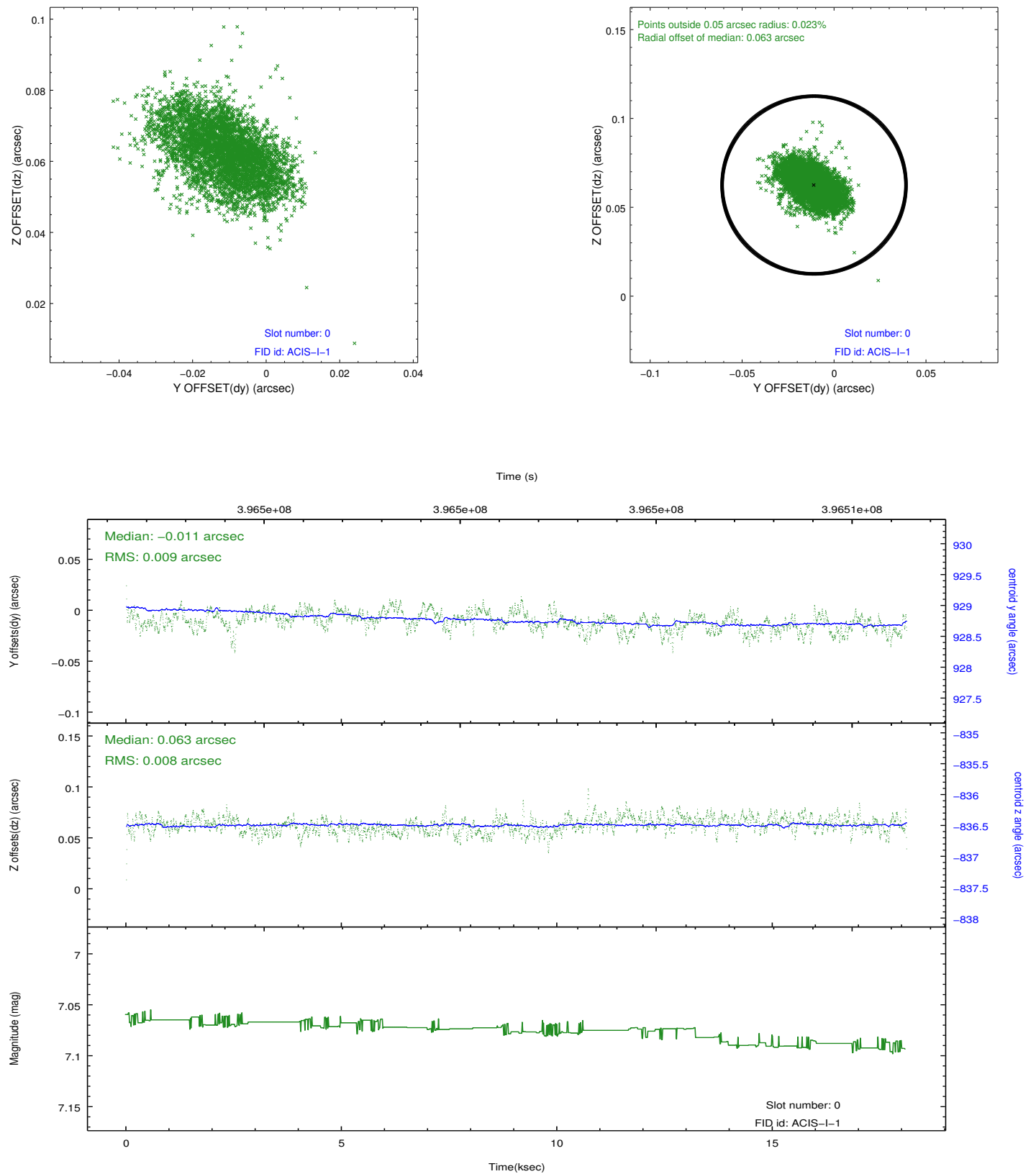


2.4.5 Slot 7

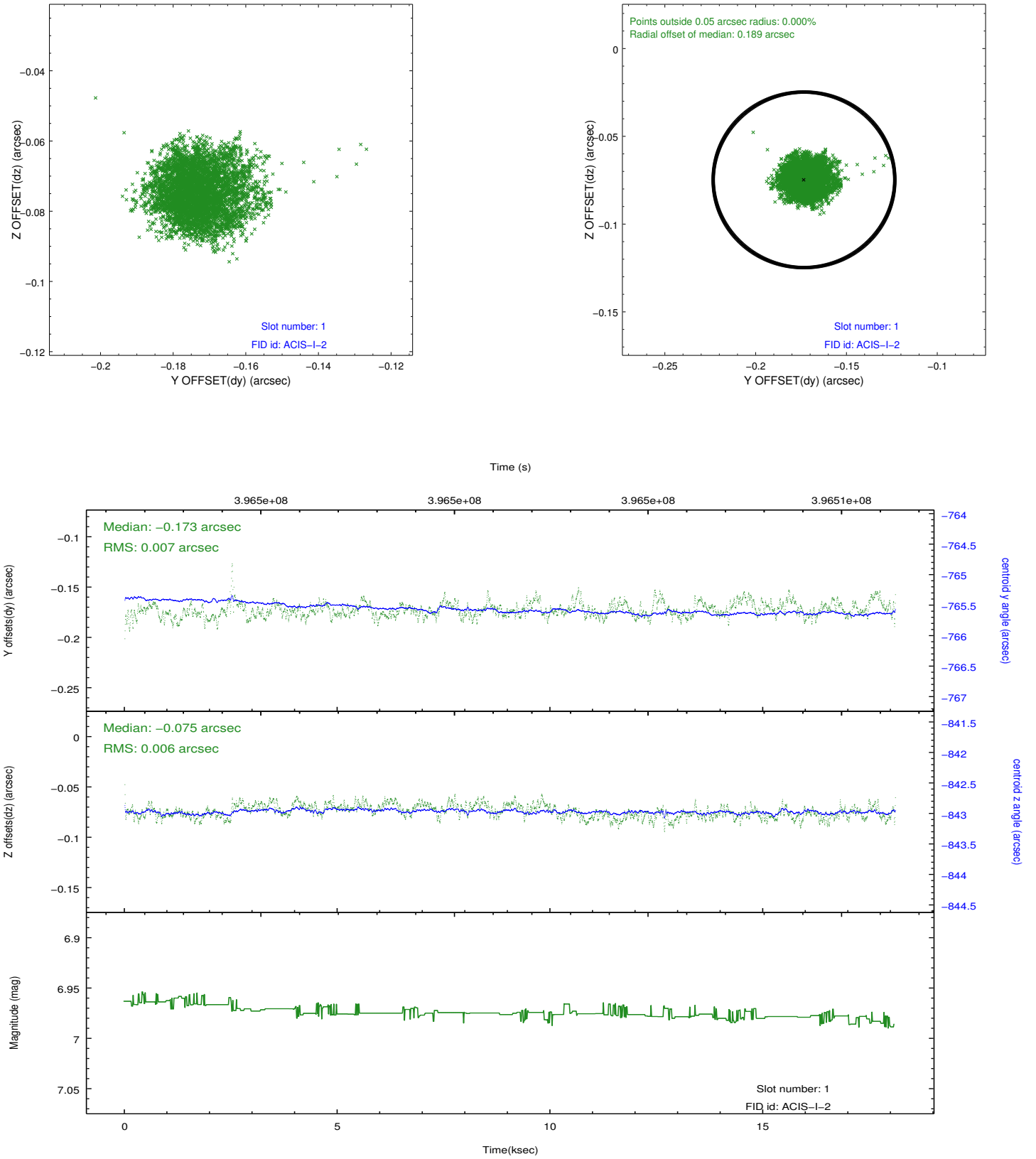


2.5 FID Slots

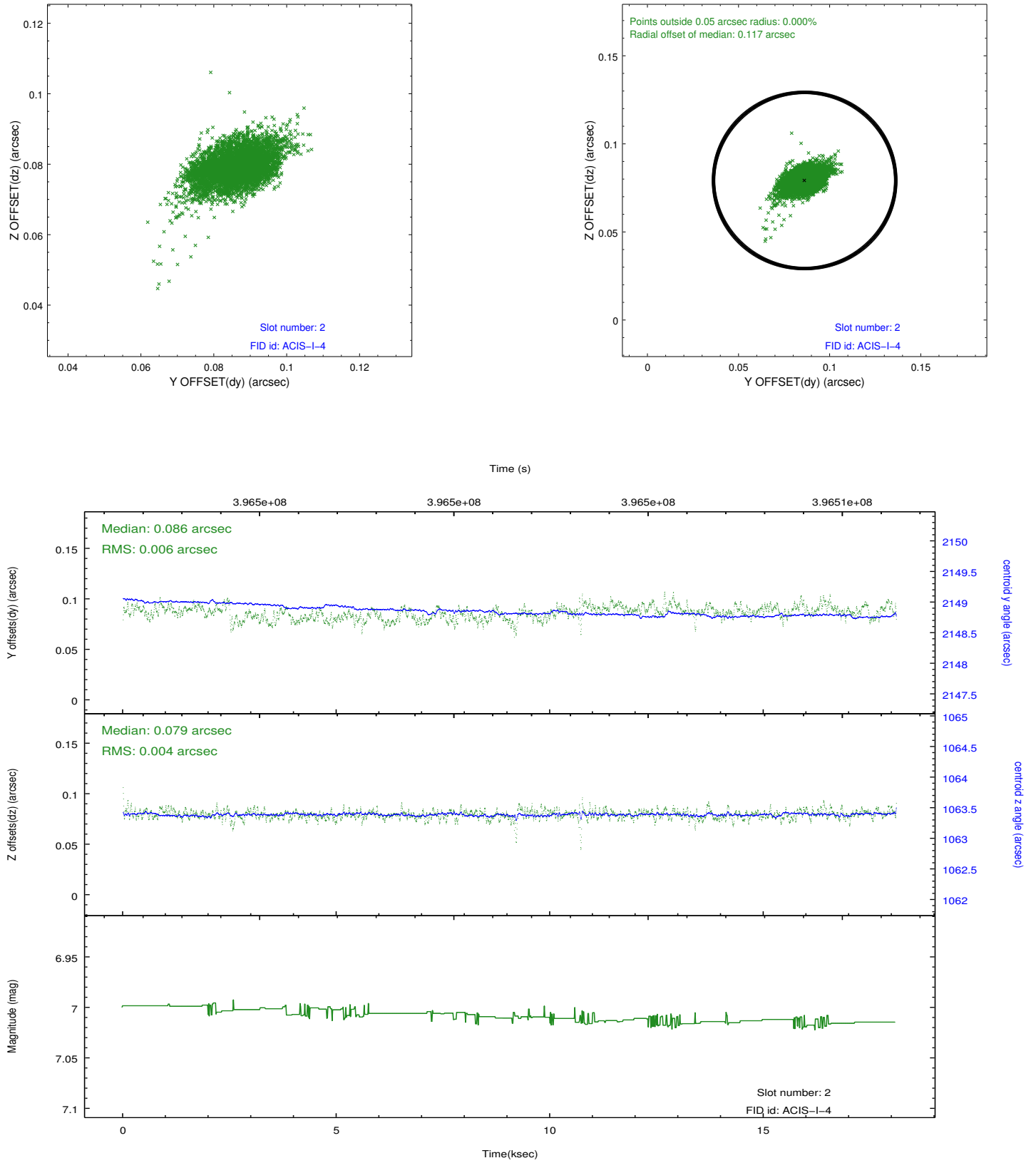
2.5.1 Slot 0



2.5.2 Slot 1



2.5.3 Slot 2



A Summary

A.1 Status

V&V Scientist	Jen Lauer
V&V Date (YYYY-MM-DD)	2012.07.11
V&V Edition	1
V&V Disposition and Status	OK
V&V Charge Time	17.046358906329

A.2 Comments

A spatial region of the original bias map for CCD = 6 suffered from anomalously high data values. Pixels in the event data that were bias-corrected by one of the original affected bias pixels may have an apparent energy shift. While the change in energy is expected to be small (~ 20 eV), it depends on many parameters that have not yet been fully explored for this bias anomaly. The bias map for CCD = 6 has been reconstructed for this processing to remove this anomaly using scaled data from a comparable bias map from another observation. The pixels affected by the anomaly are bounded by sky coords:

(272.69399, -32.17380), (272.68896, -32.15869), (272.62068, -32.17496), (272.63455, -32.18797)