

V&V Reference Report

L2 ASCDS Version : 8.4.5

Observation 10989 - L2 Version 2
Chandra X-Ray Center

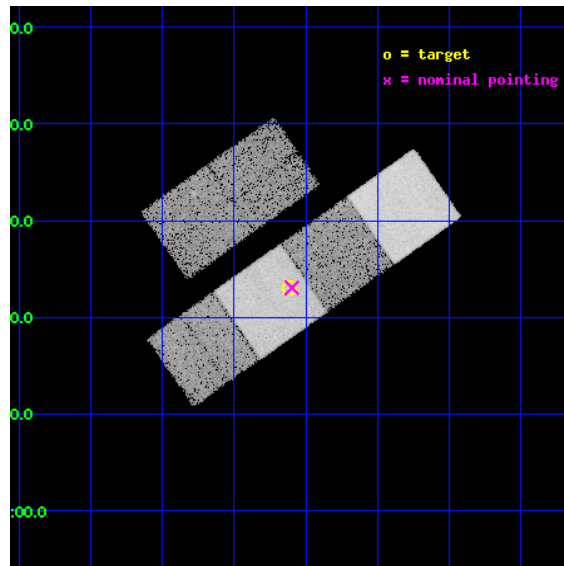
L2 Processing Date : Jun 28 2012

Contents

1	Front	2
2	OBI	3
2.1	OBI	3
2.1.1	Images	3
2.1.2	Bias	3
2.1.3	Parameters	4
2.1.4	Events	4
2.2	Compared Parameters	5
2.3	Aspect	6
2.4	Star Slots	9
2.4.1	Slot 3	9
2.4.2	Slot 4	10
2.4.3	Slot 5	11
2.4.4	Slot 6	12
2.5	FID Slots	13
2.5.1	Slot 0	13
2.5.2	Slot 1	14
2.5.3	Slot 2	15
A	Summary	16
A.1	Status	16
A.2	Comments	16

1 Front

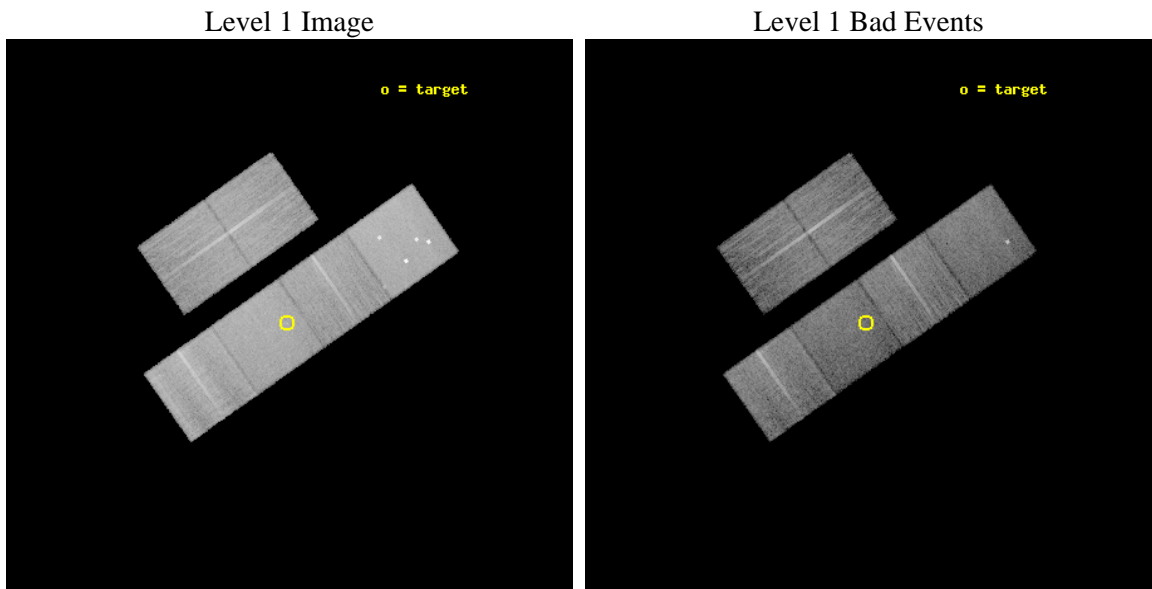
seq_num	200620	Sequence number
obs_id	10989	Observation id
title	The active host star of the extrasolar planet COROT-EXO-2b	Proposa
observer	Prof. Jurgen Schmitt	Principal investigator
object	2MASS J19270649+0123013	Source name
dtcycle	0	
cycle	P	events from which exps? Prim/Second/Both
ra_targ	291.779167	Observer's specified target RA [deg]
dec_targ	1.383889	Observer's specified target Dec [deg]
ra_nom	291.77432041256	Nominal RA [deg]
dec_nom	1.3841778211686	Nominal Dec [deg]
roll_nom	144.90374408381	Nominal Roll [deg]
revision	2	Processing version of data
ontime	15020.799944103	Sum of GTIs [s]
livetime	14830.597530771	Livetime [s]
ontime2	15020.799944103	Sum of GTIs [s]
ontime3	15020.799944103	Sum of GTIs [s]
ontime5	15020.799944103	Sum of GTIs [s]
ontime6	15017.5589239	Sum of GTIs [s]
ontime7	15020.799944103	Sum of GTIs [s]
ontime8	15020.799944103	Sum of GTIs [s]
l2events	184392	Number of level 2 events



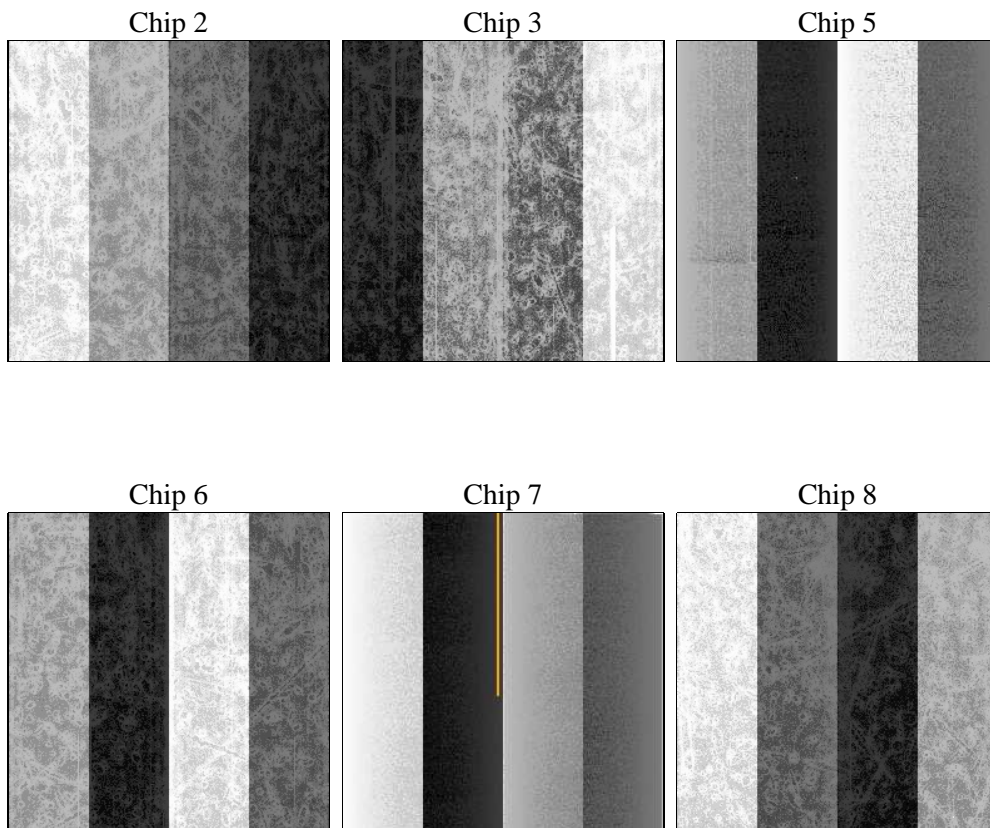
2 OBI

2.1 OBI

2.1.1 Images



2.1.2 Bias



2.1.3 Parameters

obi_num	1	Obi number	sched_exp_time	15000.000000	[s] Scheduled observation exposure time
ascdsver	8.4.5	Processing system revision	ontime	15020.799944103	Sum of GTIs [s]
caldsver	4.5.0	 	ontime2	15020.799944103	Sum of GTIs [s]
date	2012-06-28T21:41:54	Date and time of file creation	ontime3	15020.799944103	Sum of GTIs [s]
revision	2	Processing version of data	ontime5	15020.799944103	Sum of GTIs [s]
			ontime6	15017.5589239	Sum of GTIs [s]
			ontime7	15020.799944103	Sum of GTIs [s]
			ontime8	15020.799944103	Sum of GTIs [s]
			l1events	804258	Number of level 1 events

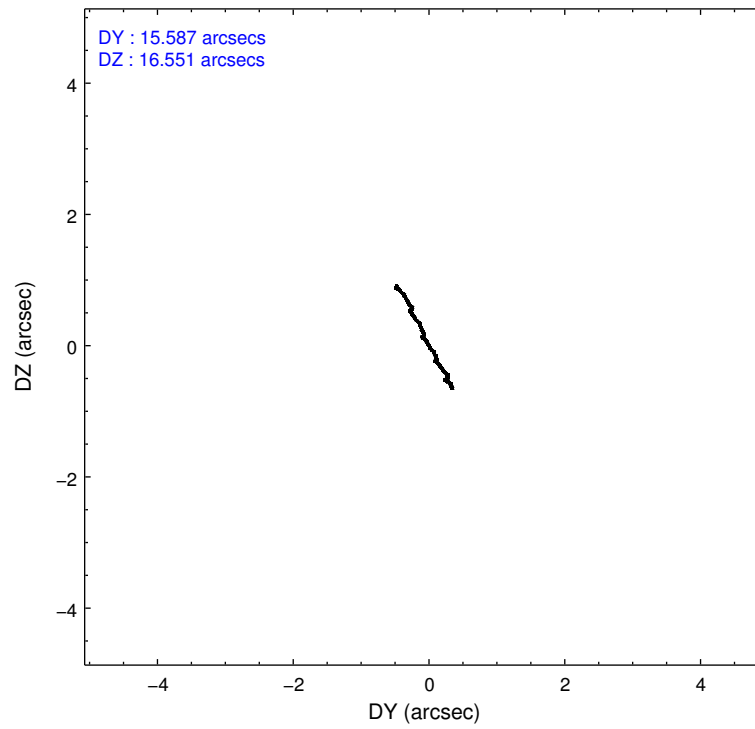
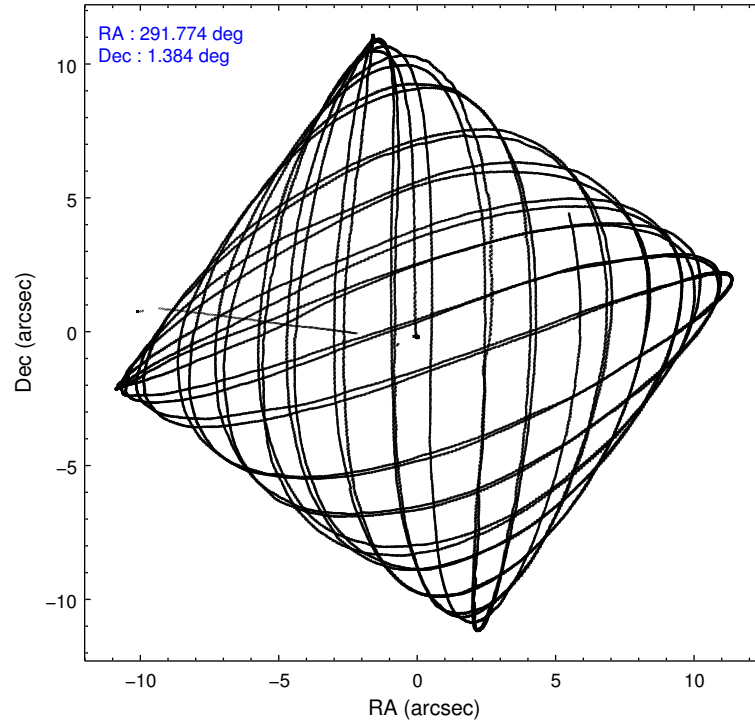
2.1.4 Events

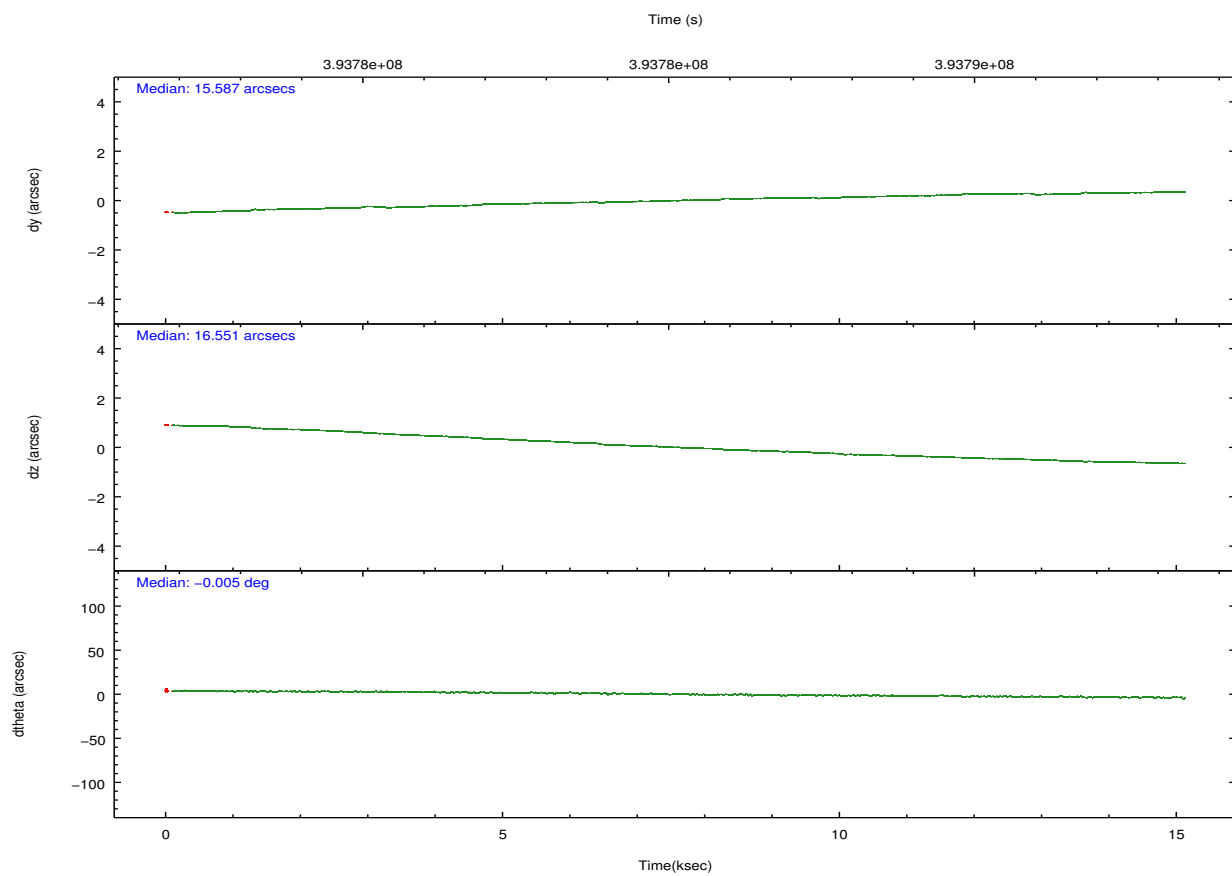
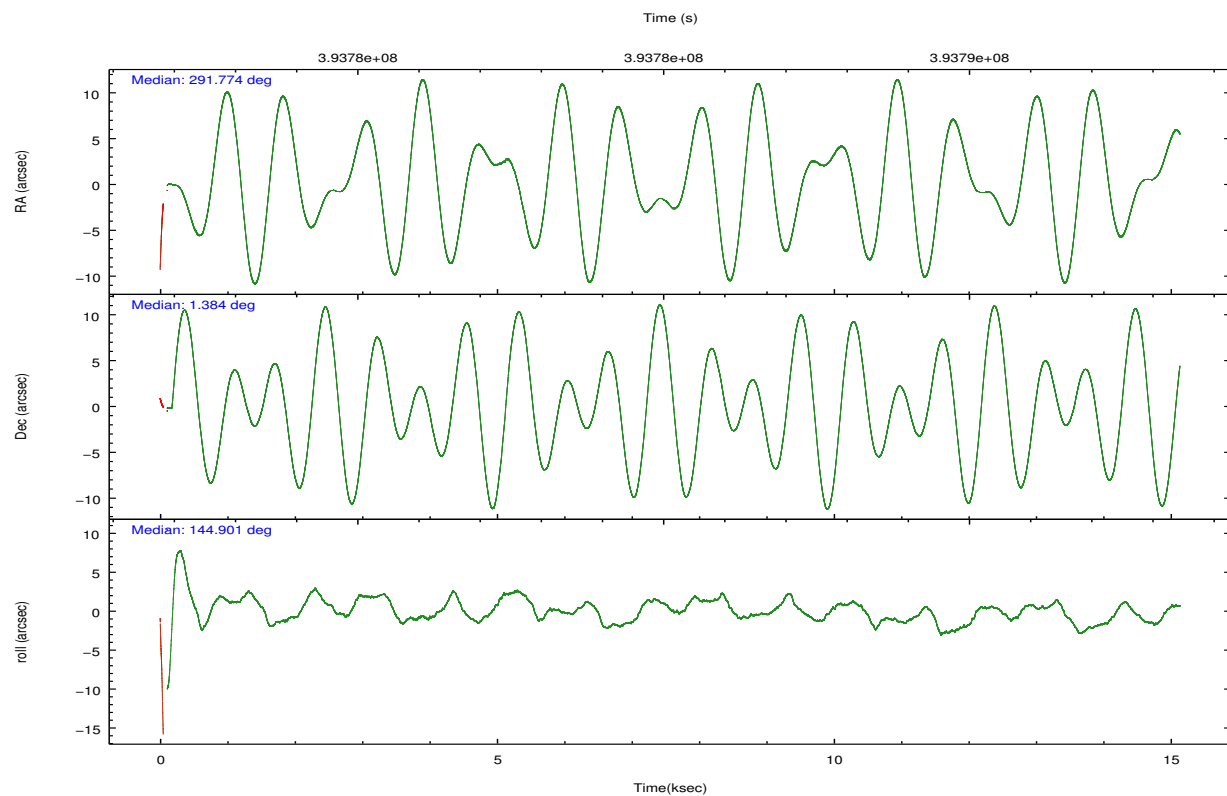
	ccd 2	ccd 3	ccd 5	ccd 6	ccd 7	ccd 8		ccd 2	ccd 3	ccd 5	ccd 6	ccd 7	ccd 8
level 1 events	119736	106790	178267	116181	137765	145519	grade 0 events	4356	4205	14210	4505	5776	11706
rejected events	107734	95138	86008	103280	75555	106567		3%	3%	7%	3%	4%	8%
rejected %	89%	89%	48%	88%	54%	73%	grade 1 events	87	66	327	65	194	142
								0%	0%	0%	0%	0%	0%
							grade 2 events	2924	2544	26946	2974	12799	9020
								2%	2%	15%	2%	9%	6%
							grade 3 events	1239	1299	3456	1293	5484	4230
								1%	1%	1%	1%	3%	2%
							grade 4 events	1253	1320	3350	1352	5623	3890
								1%	1%	1%	1%	4%	2%
							grade 5 events	4430	5054	13345	5074	14428	7483
								3%	4%	7%	4%	10%	5%
							grade 6 events	2252	2306	44503	2801	32665	10202
								1%	2%	24%	2%	23%	7%
							grade 7 events	103195	89996	72130	98117	60796	98846
								86%	84%	40%	84%	44%	67%

2.2 Compared Parameters

Parameter	Planned	Actual	Parameter	Planned	Actual
Instrument	ACIS	ACIS	Obspar format version number	7	7
Detector	ACIS-235678	ACIS-235678	Obspar file type	PREDICTED	ACTUAL
Grating	NONE	NONE	Obspar update status	NONE	UPDATED
Data mode	FAINT	FAINT	CCD I0 on	N	N
Observation mode	POINTING	POINTING	CCD I1 on	N	N
[deg] Pointing RA	291.801601	291.7743204125589	CCD I2 on	O1	Y
[deg] Pointing Dec	1.382120	1.38417782116864	CCD I3 on	O2	Y
[deg] Pointing Roll	144.746452	144.9037440838053	CCD S0 on	N	N
[mm] SIM focus pos	-0.684267	-0.6828225247311905	CCD S1 on	Y	Y
[mm] SIM defocus	0	0.001444936568705701	CCD S2 on	Y	Y
[mm] SIM translation stage pos	-190.132523	-190.1425803651734	CCD S3 on	Y	Y
[mm] SIM translation stage offset	0	0.01005778216563158	CCD S4 on	Y	Y
[s] Observation start time (MET)	393777665.184000	393776473.97785	CCD S5 on	N	N
Observation start date	2010-06-24T14:39:59	2010-06-24T14:21:13	Number of optional ACIS chips dropped	0	0
[s] Observation end time (MET)	393792665.184000	393793949.71624	On-chip summing requested	N	N
Observation end date	2010-06-24T18:49:59	2010-06-24T19:12:29	Subarray requested	NONE	NONE
Read mode	TIMED	TIMED	Alternating exposures requested	N	N
			[s] Primary exposure time	0.000000	3.2

2.3 Aspect



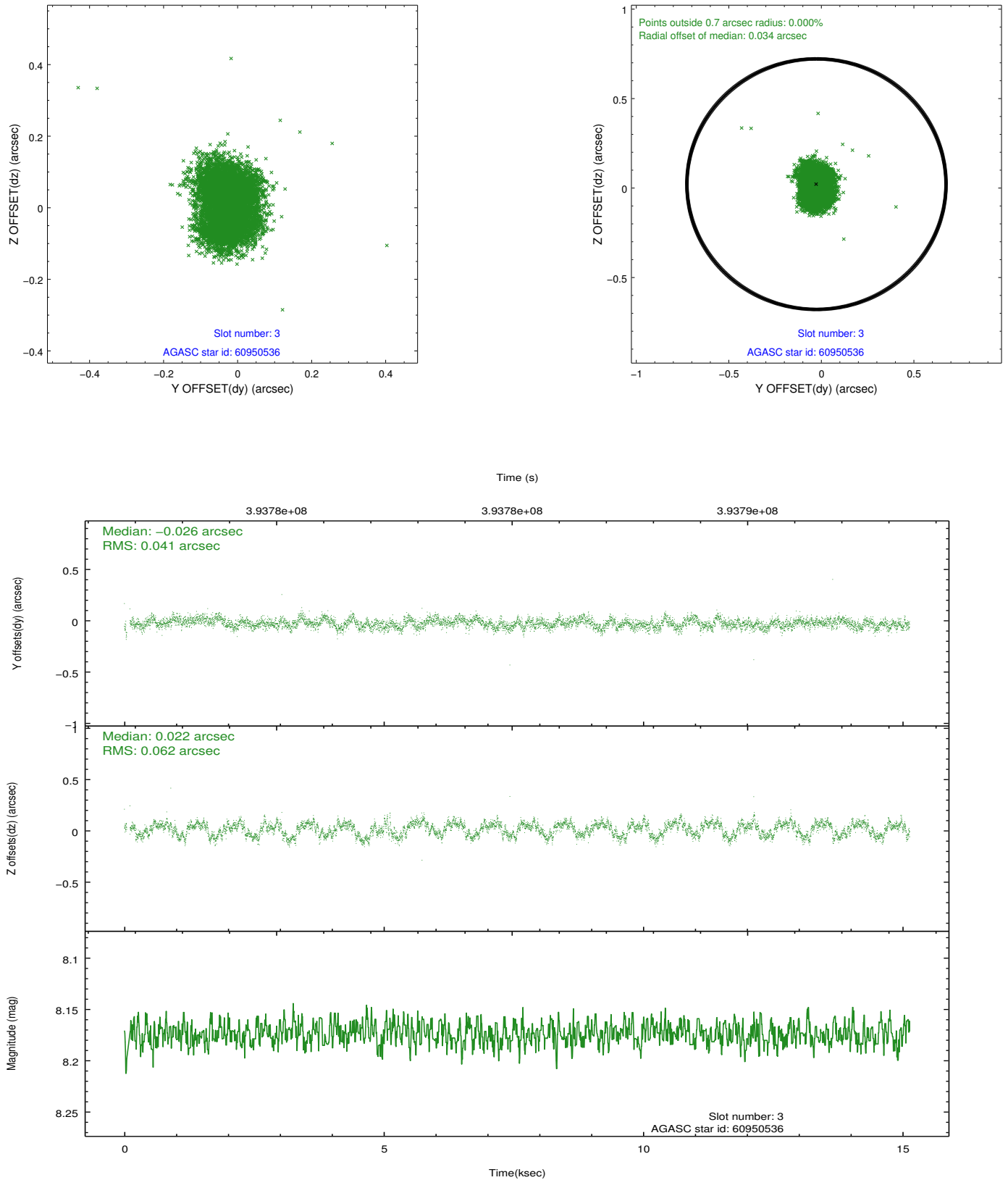


Slot Statistics

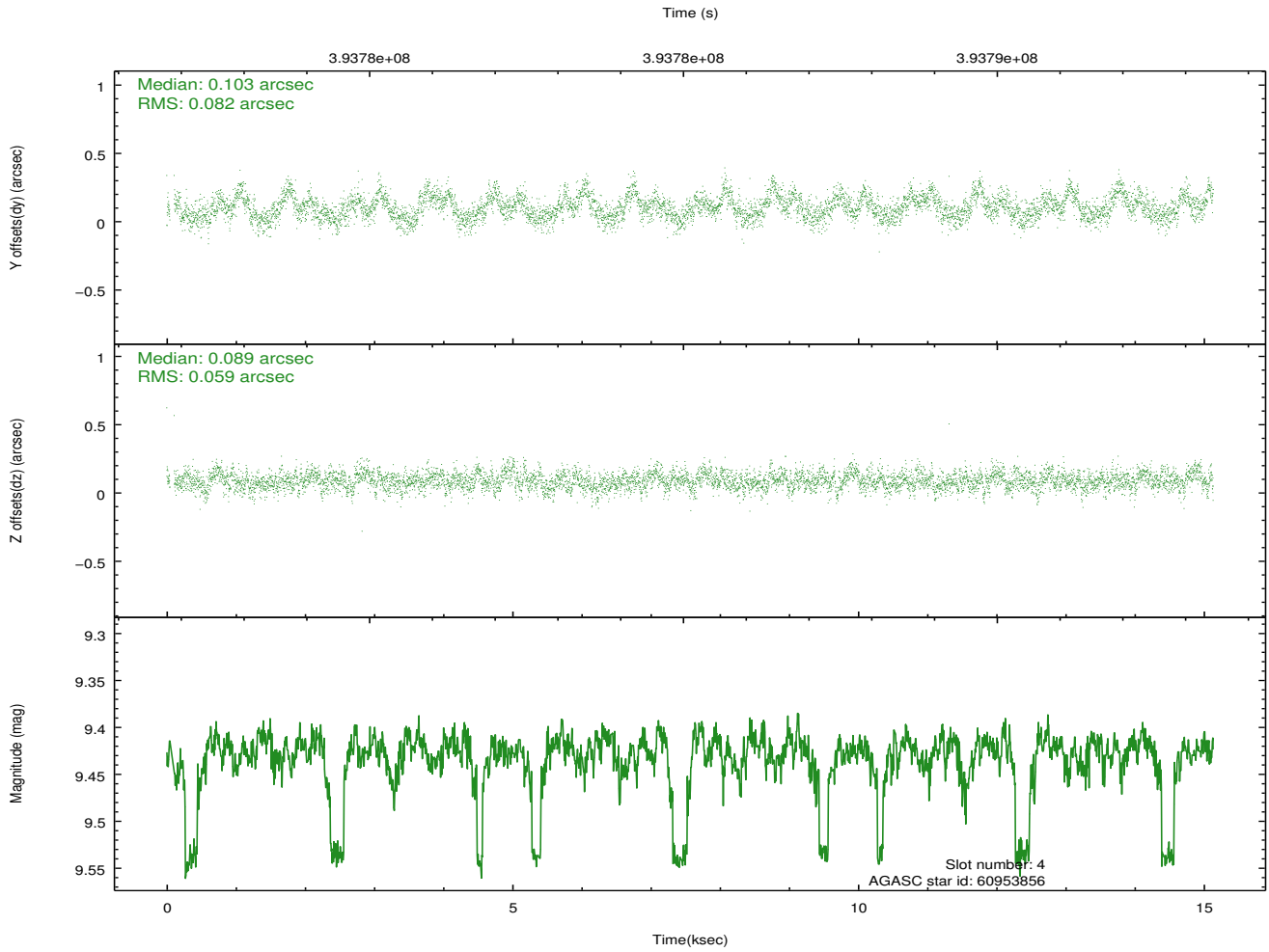
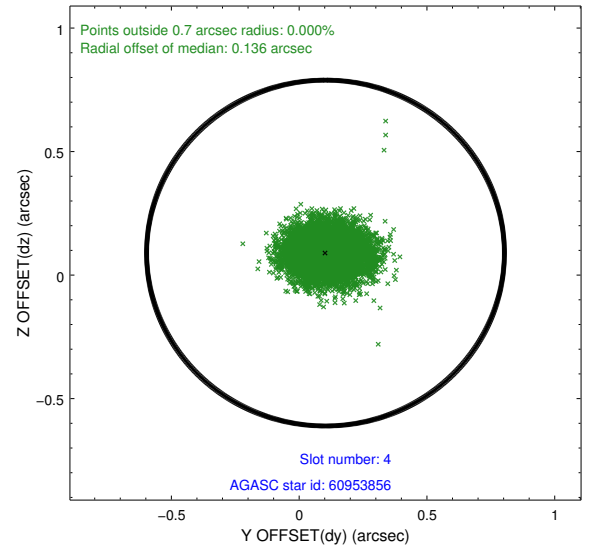
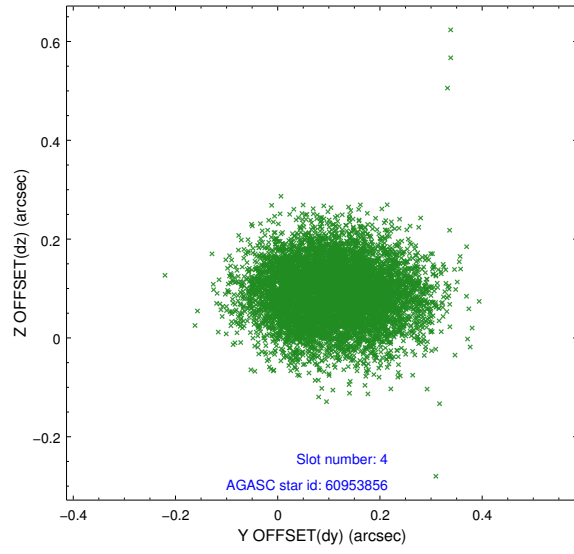
	status	id	mag	n_pts	med_dy	med_dz	drl
	FID	ACIS-S-1	6.96	3678	0.090	-0.096	0.015
	FID	ACIS-S-5	7.01	3678	-0.132	0.054	0.017
	FID	ACIS-S-6	7.11	3678	0.022	0.057	0.020
	GUIDE	60950536	8.17	7355	-0.026	0.022	0.080
	GUIDE	60953856	9.43	7331	0.103	0.089	0.108
	GUIDE	60954944	9.70	7336	-0.140	-0.058	0.129
	GUIDE	60964224	9.18	7348	0.065	-0.053	0.105
0.0000.0000.0000.0000000.00000000.000.00							

2.4 Star Slots

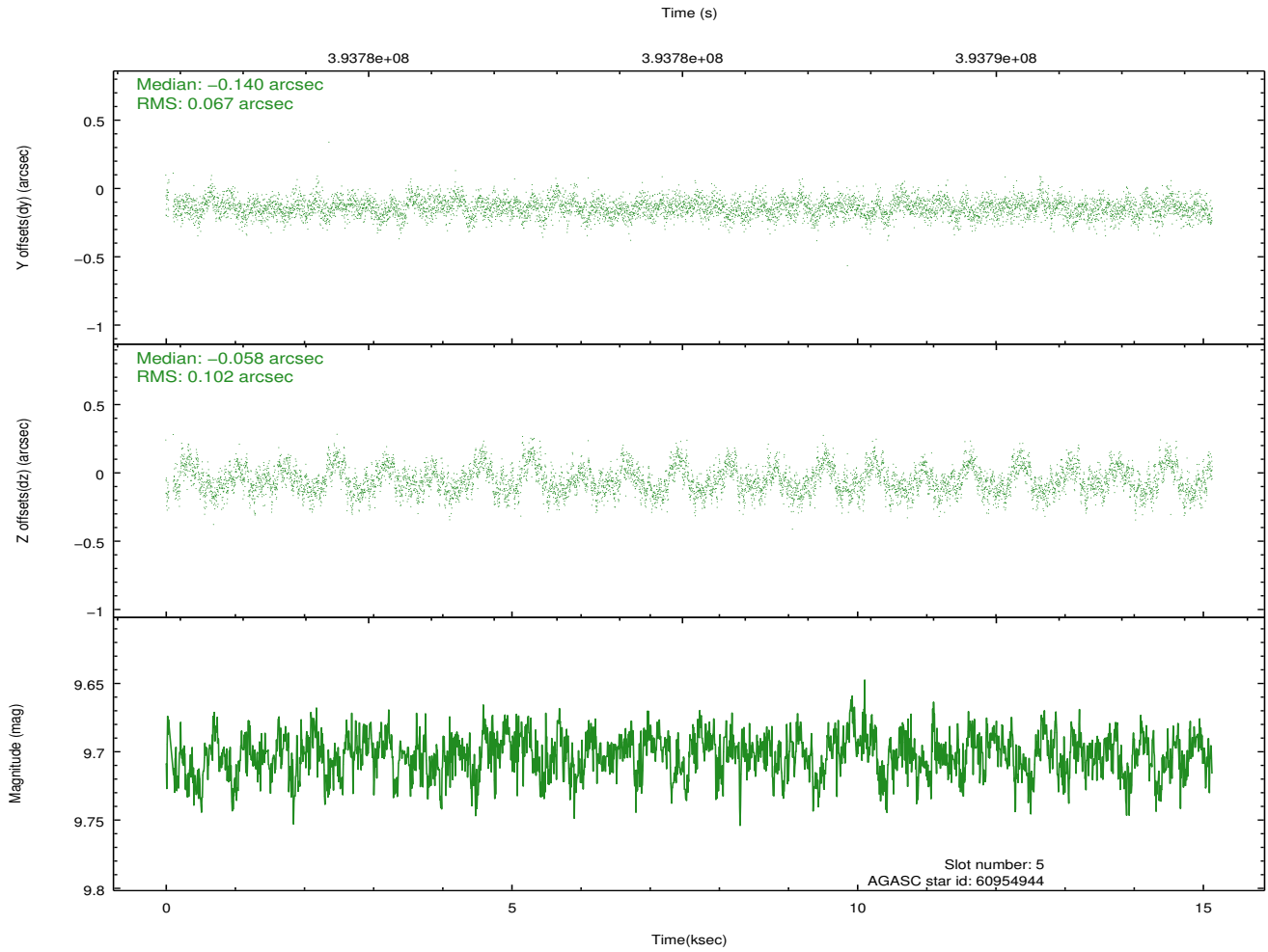
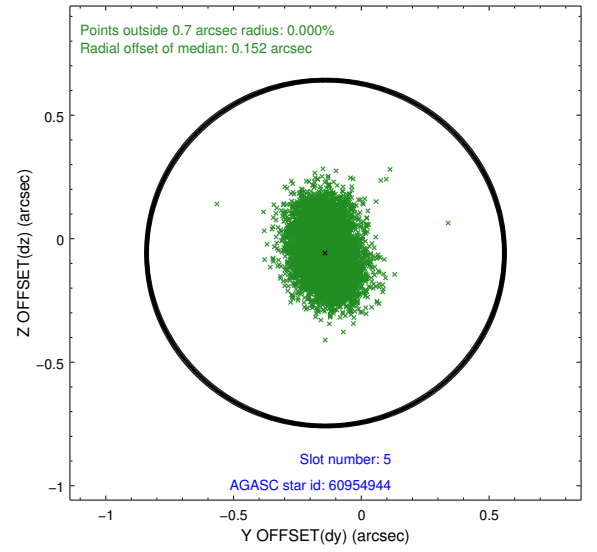
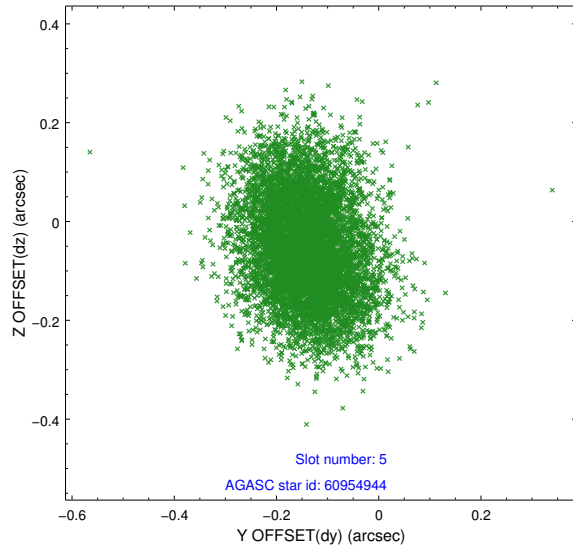
2.4.1 Slot 3



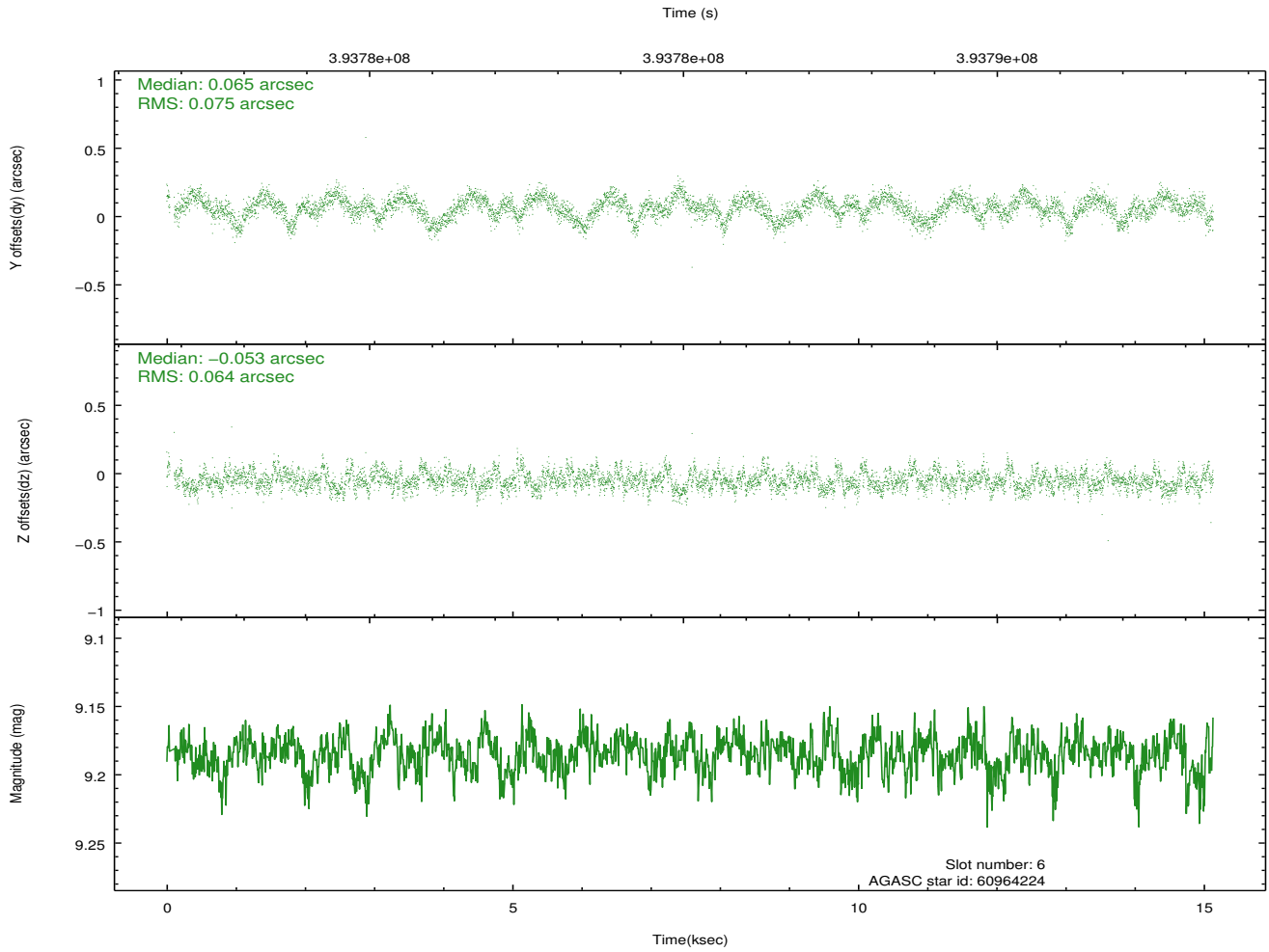
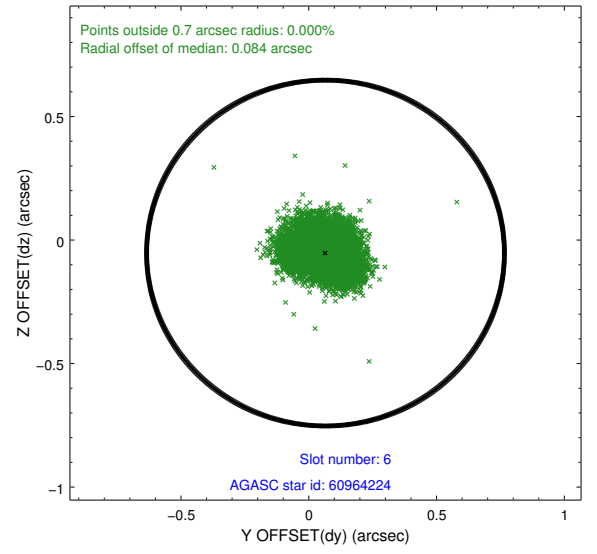
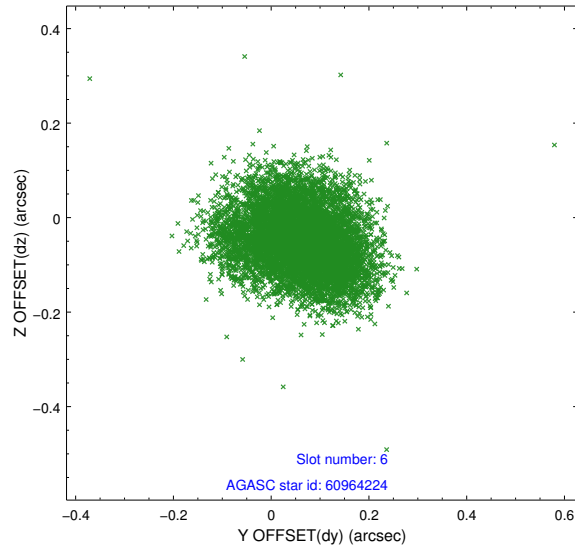
2.4.2 Slot 4



2.4.3 Slot 5

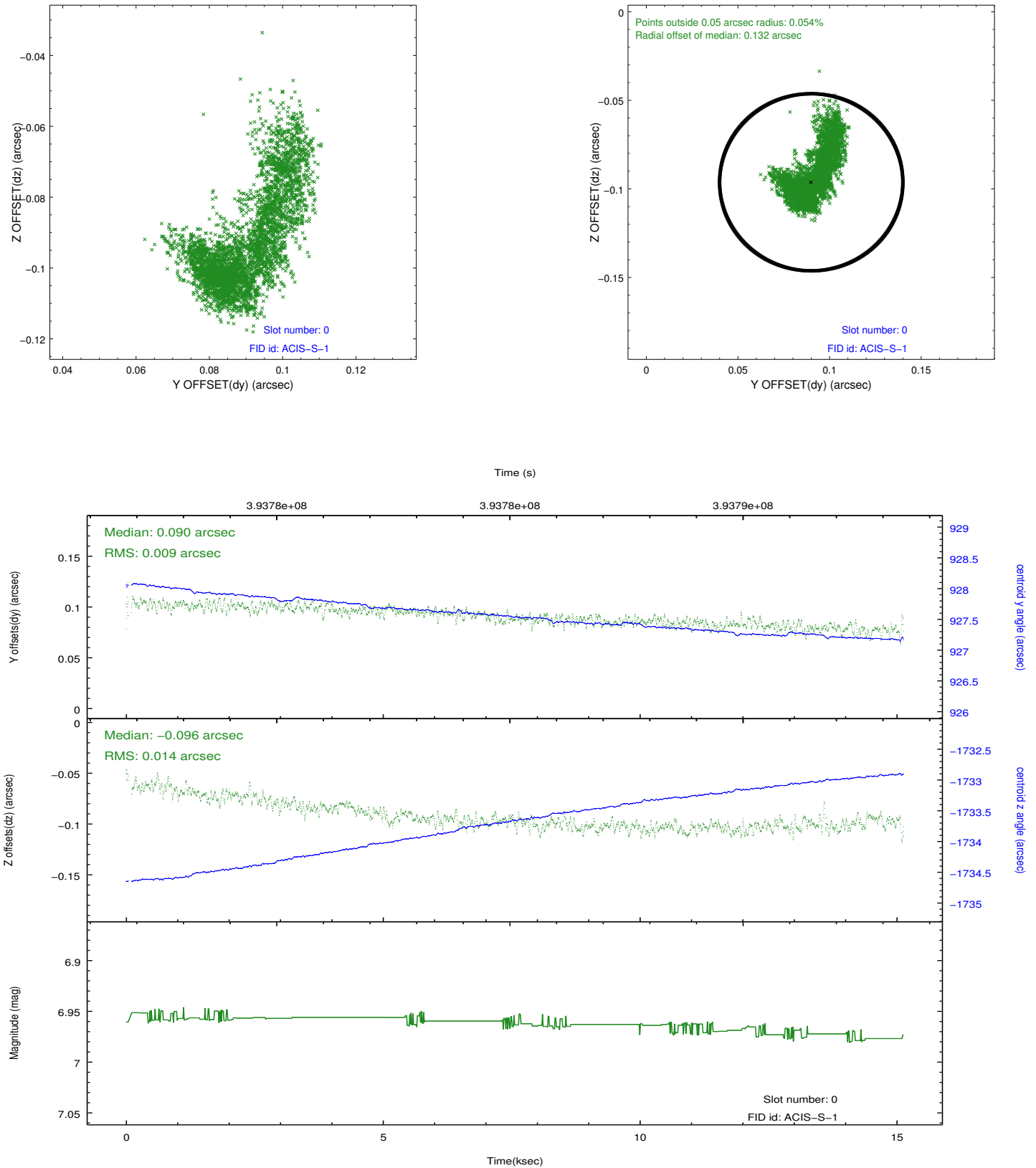


2.4.4 Slot 6

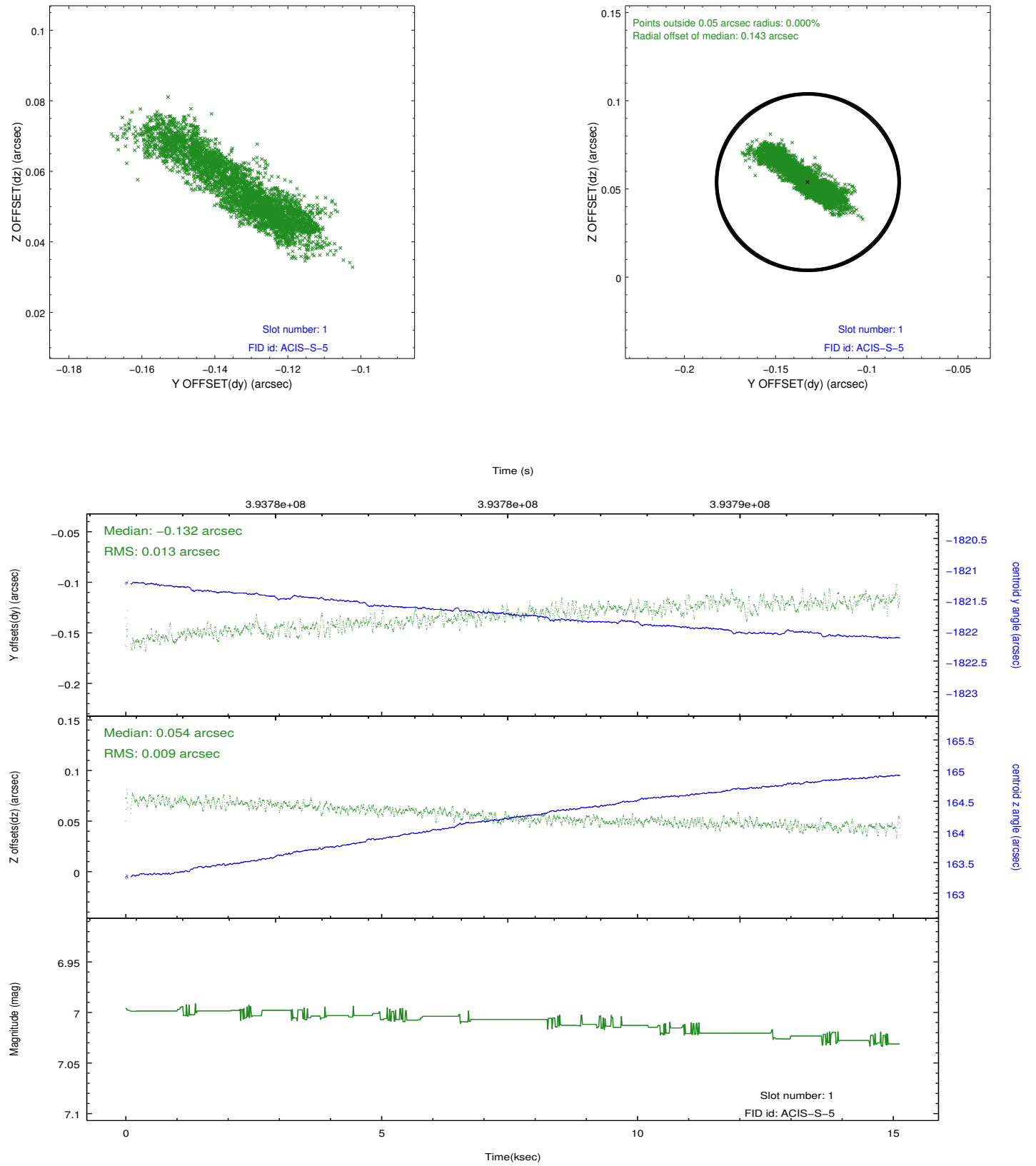


2.5 FID Slots

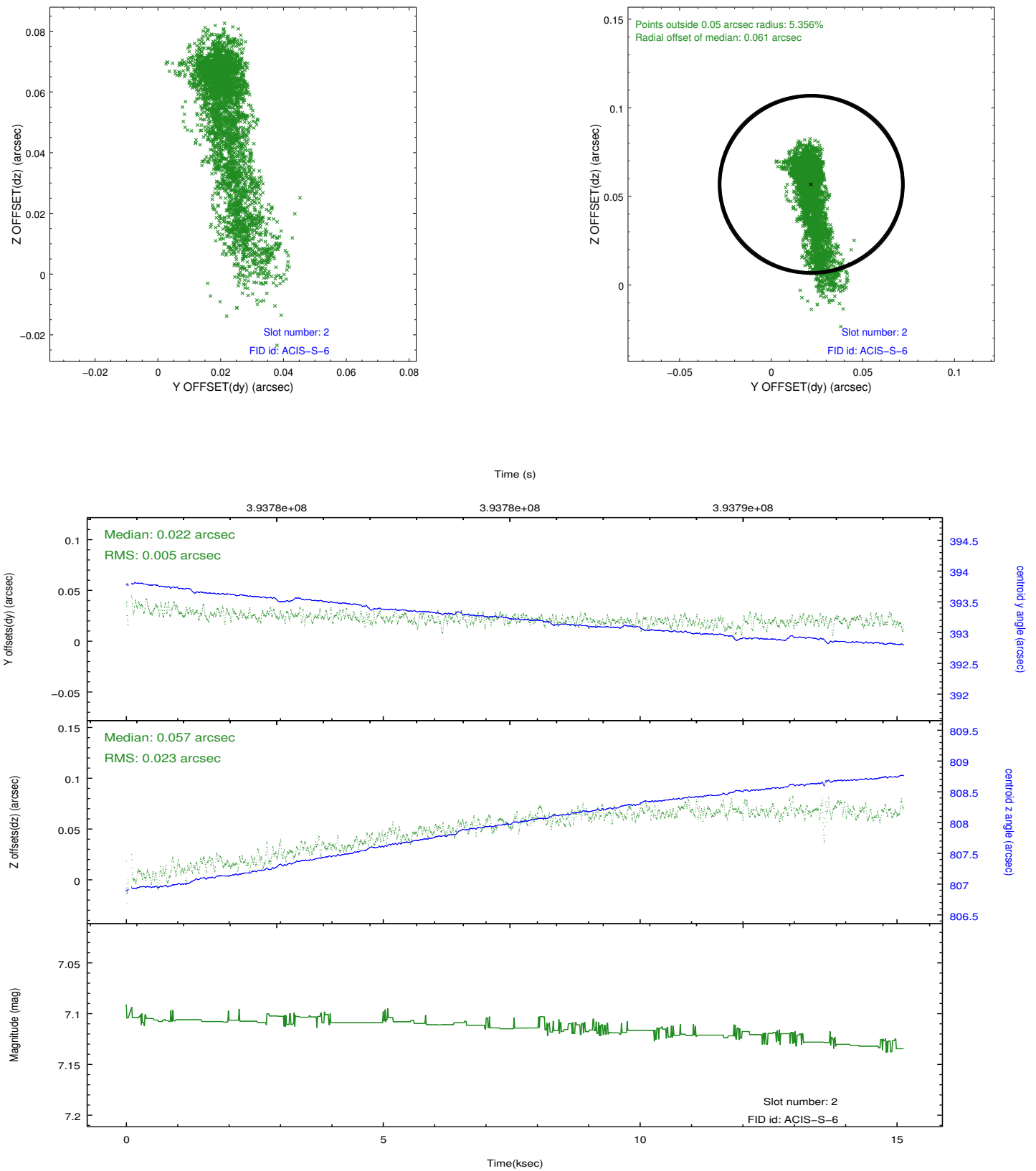
2.5.1 Slot 0



2.5.2 Slot 1



2.5.3 Slot 2



A Summary

A.1 Status

V&V Scientist	Jen Lauer
V&V Date (YYYY-MM-DD)	2012.07.05
V&V Edition	1
V&V Disposition and Status	OK
V&V Charge Time	15.020799944103

A.2 Comments