

# V&V Reference Report

## L2 ASCDS Version : 8.4.5

Observation 10985 - L2 Version 2  
Chandra X-Ray Center

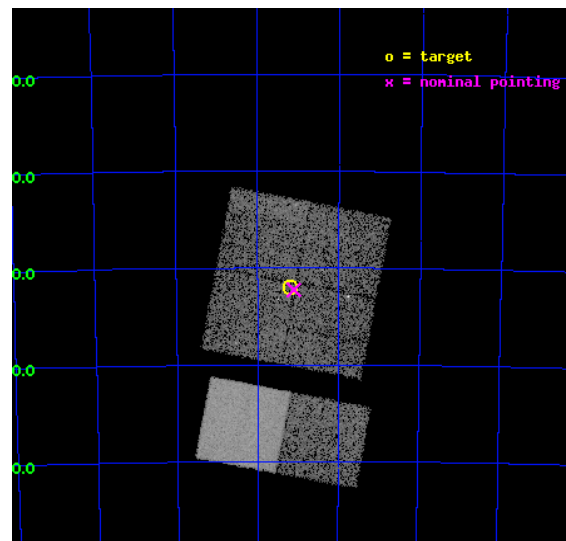
L2 Processing Date : Jun 23 2012

## Contents

<b>1</b>	<b>Front</b>	<b>2</b>
<b>2</b>	<b>OBI</b>	<b>3</b>
2.1	OBI . . . . .	3
2.1.1	Images . . . . .	3
2.1.2	Bias . . . . .	3
2.1.3	Parameters . . . . .	4
2.1.4	Events . . . . .	4
2.2	Compared Parameters . . . . .	5
2.3	Aspect . . . . .	6
2.4	Star Slots . . . . .	9
2.4.1	Slot 3 . . . . .	9
2.4.2	Slot 4 . . . . .	10
2.4.3	Slot 5 . . . . .	11
2.4.4	Slot 6 . . . . .	12
2.4.5	Slot 7 . . . . .	13
2.5	FID Slots . . . . .	14
2.5.1	Slot 0 . . . . .	14
2.5.2	Slot 1 . . . . .	15
2.5.3	Slot 2 . . . . .	16
<b>A</b>	<b>Summary</b>	<b>17</b>
A.1	Status . . . . .	17
A.2	Comments . . . . .	17

# 1 Front

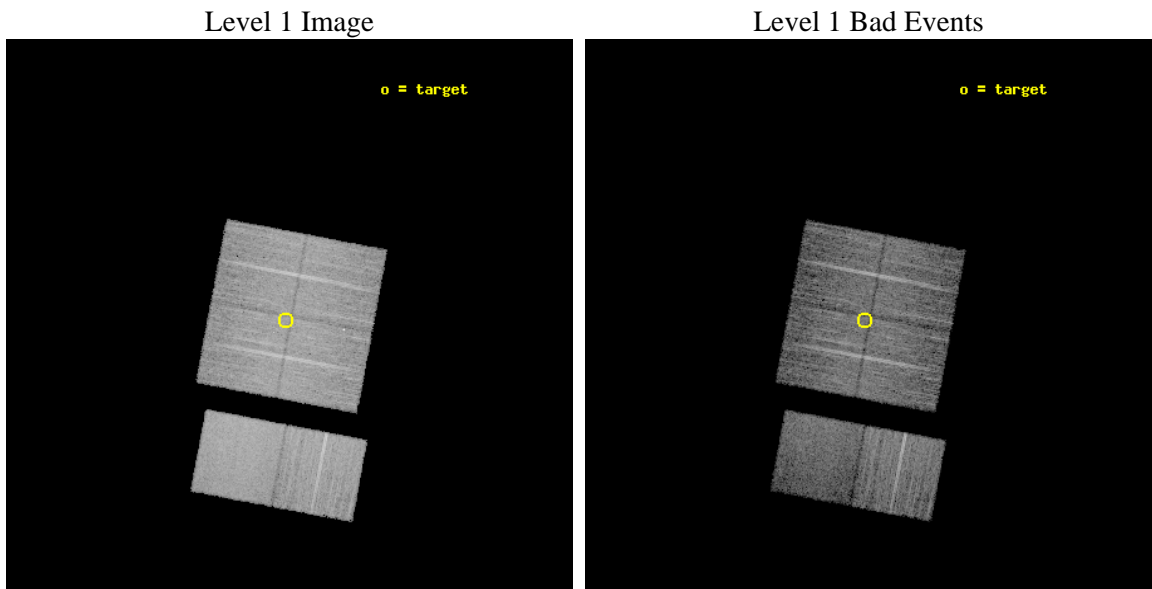
seq_num	200617	Sequence number
obs_id	10985	Observation id
title	Cosmic archaeology with Chandra: from a supergiant shell to young stellar objects in NGC 602	Proposal title
observer	Dr. Lidia Oskinova	Principal investigator
object	NGC 602	Source name
dtcycle	0	&#160
cycle	P	events from which exps? Prim/Second/Both
ra_targ	22.301667	Observer's specified target RA [deg]
dec_targ	-73.533806	Observer's specified target Dec [deg]
ra_nom	22.276501767517	Nominal RA [deg]
dec_nom	-73.537582372815	Nominal Dec [deg]
roll_nom	190.68457603581	Nominal Roll [deg]
revision	2	Processing version of data
ontime	10108.799962401	Sum of GTIs [s]
livetime	9980.7962504889	Livetime [s]
ontime0	10108.799962401	Sum of GTIs [s]
ontime1	10108.799962401	Sum of GTIs [s]
ontime2	10108.799962401	Sum of GTIs [s]
ontime3	10108.799962401	Sum of GTIs [s]
ontime6	10108.799962401	Sum of GTIs [s]
ontime7	10108.799962401	Sum of GTIs [s]
l2events	77920	Number of level 2 events



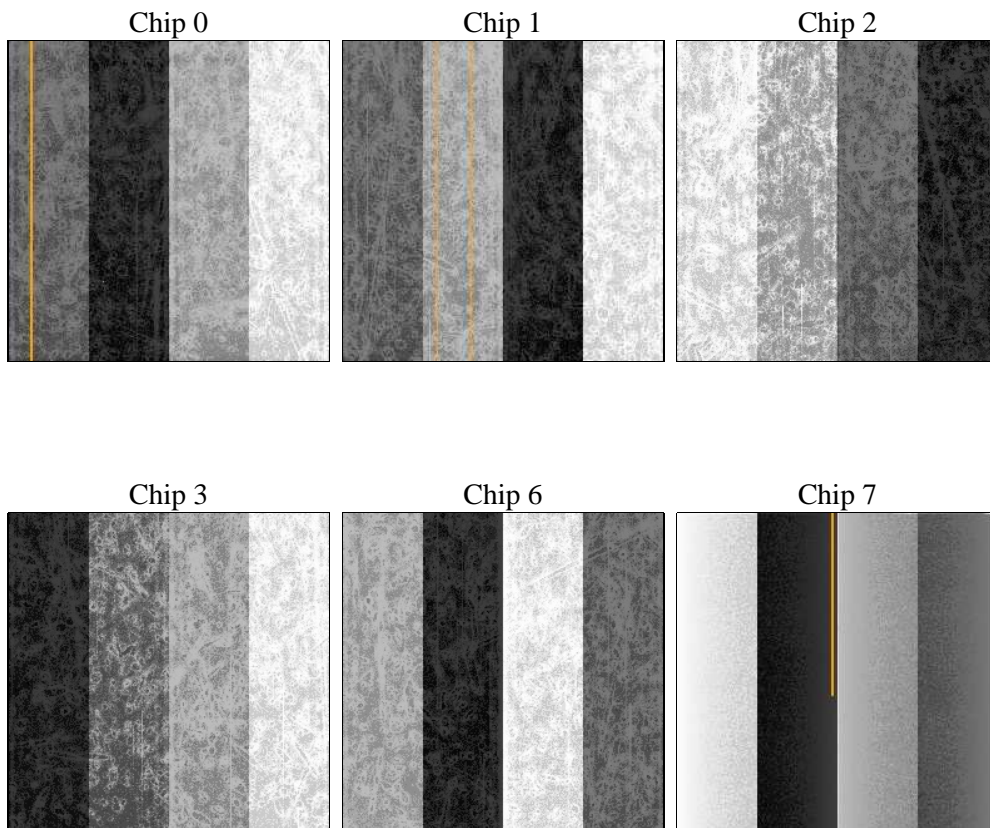
## 2 OBI

### 2.1 OBI

#### 2.1.1 Images



#### 2.1.2 Bias



### 2.1.3 Parameters

obi_num	0	Obi number	sched_exp_time	10000.000000	[s] Scheduled observation exposure time
ascdsver	8.4.5	Processing system revision	ontime	10108.799962401	Sum of GTIs [s]
caldsver	4.4.10	&#160	ontime0	10108.799962401	Sum of GTIs [s]
date	2012-06-23T18:24:25	Date and time of file creation	ontime1	10108.799962401	Sum of GTIs [s]
revision	2	Processing version of data	ontime2	10108.799962401	Sum of GTIs [s]
			ontime3	10108.799962401	Sum of GTIs [s]
			ontime6	10108.799962401	Sum of GTIs [s]
			ontime7	10108.799962401	Sum of GTIs [s]
			l1events	542919	Number of level 1 events

### 2.1.4 Events

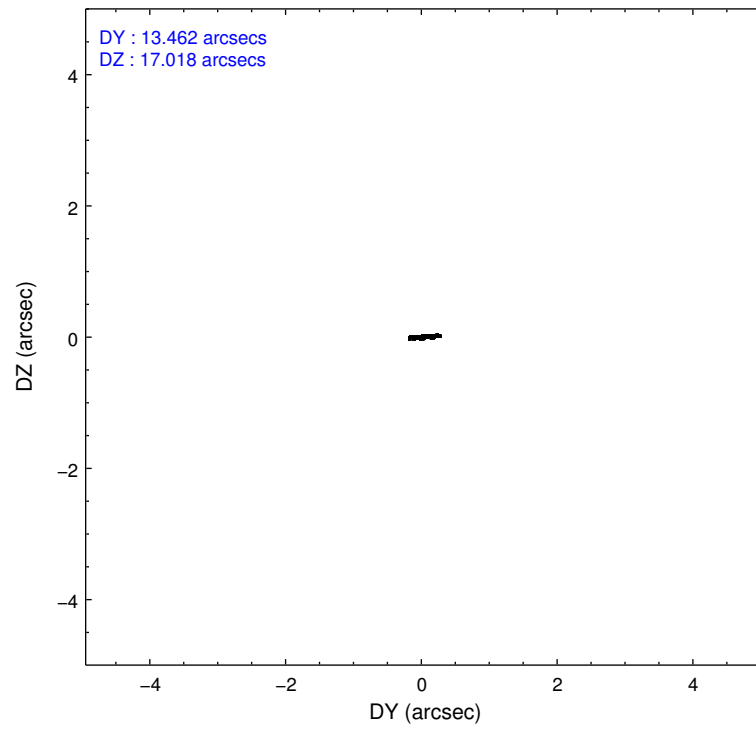
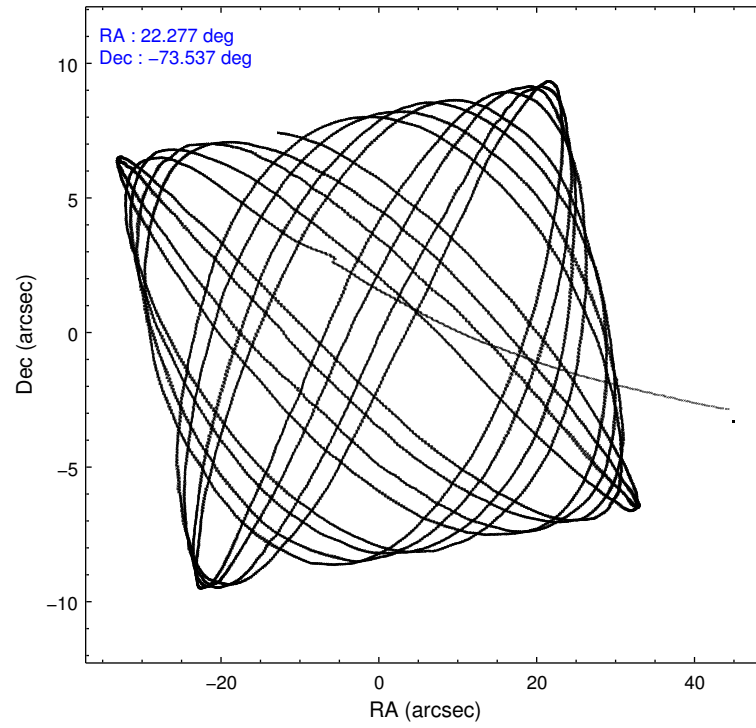
	ccd 0	ccd 1	ccd 2	ccd 3	ccd 6	ccd 7		ccd 0	ccd 1	ccd 2	ccd 3	ccd 6	ccd 7
level 1 events	83402	81913	91700	85950	94068	105886	grade 0 events	3341	3862	3849	3185	3385	4316
rejected events	74867	72493	82634	77942	85300	63360		4%	4%	4%	3%	3%	4%
rejected %	89%	88%	90%	90%	90%	59%	grade 1 events	43	49	60	56	45	137
								0%	0%	0%	0%	0%	0%
							grade 2 events	2362	2500	2327	2016	2243	9721
								2%	3%	2%	2%	2%	9%
							grade 3 events	975	1034	969	1000	1005	4231
								1%	1%	1%	1%	1%	3%
							grade 4 events	953	1116	1013	956	1036	4328
								1%	1%	1%	1%	1%	4%
							grade 5 events	3485	3649	3316	3944	3946	11240
								4%	4%	3%	4%	4%	10%
							grade 6 events	1888	2064	1857	1813	2146	25002
								2%	2%	2%	2%	2%	23%
							grade 7 events	70355	67639	78309	72980	80262	46911
								84%	82%	85%	84%	85%	44%

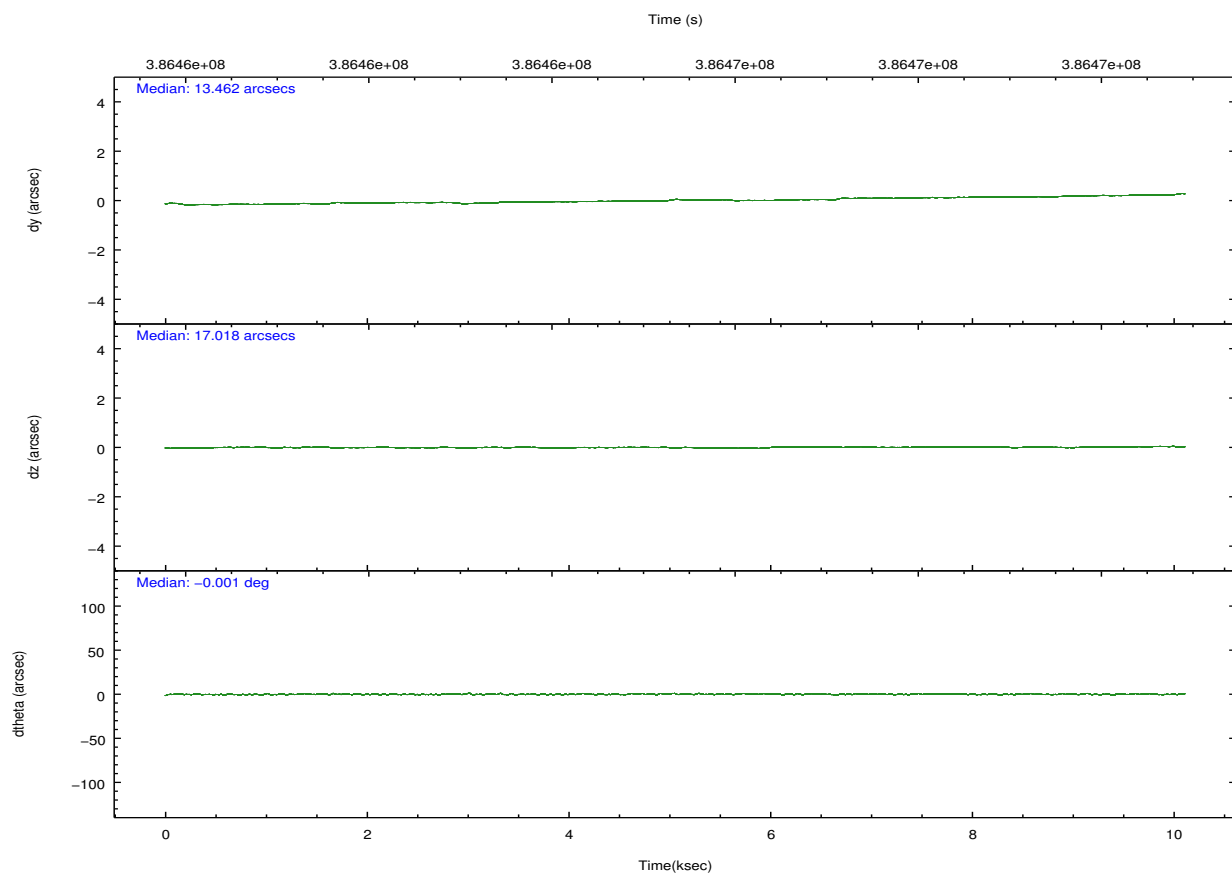
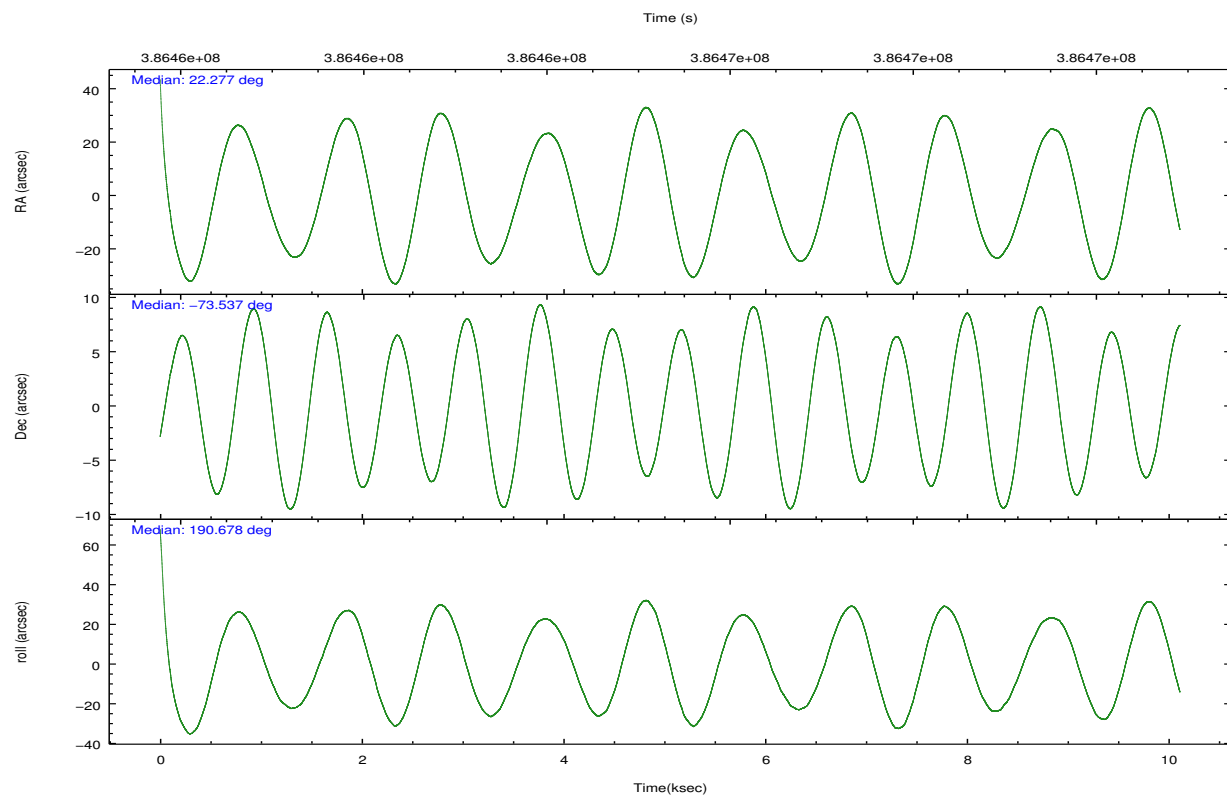


## 2.2 Compared Parameters

Parameter	Planned	Actual	Parameter	Planned	Actual
Instrument	ACIS	ACIS	Obspar format version number	7	7
Detector	ACIS-012367	ACIS-012367	Obspar file type	PREDICTED	ACTUAL
Grating	NONE	NONE	Obspar update status	NONE	UPDATED
Data mode	FAINT	FAINT	CCD I0 on	Y	Y
Observation mode	POINTING	POINTING	CCD I1 on	Y	Y
[deg] Pointing RA	22.349735	22.27650176751661	CCD I2 on	Y	Y
[deg] Pointing Dec	-73.519582	-73.53758237281549	CCD I3 on	Y	Y
[deg] Pointing Roll	190.546095	190.6845760358128	CCD S0 on	N	N
[mm] SIM focus pos	-0.782348	-0.7809083437167272	CCD S1 on	N	N
[mm] SIM defocus	0	0.001439871863259334	CCD S2 on	O1	Y
[mm] SIM translation stage pos	-233.592463	-233.5874344608287	CCD S3 on	Y	Y
[mm] SIM translation stage offset	0	-0.005018542100998502	CCD S4 on	N	N
[s] Observation start time (MET)	386460395.184000	386458757.21787	CCD S5 on	N	N
Observation start date	2010-03-31T22:05:29	2010-03-31T21:39:17	Number of optional ACIS chips dropped	0	0
[s] Observation end time (MET)	386470395.184000	386471169.9685	On-chip summing requested	N	N
Observation end date	2010-04-01T00:52:09	2010-04-01T01:06:09	Subarray requested	NONE	NONE
Read mode	TIMED	TIMED	Alternating exposures requested	N	N
			[s] Primary exposure time	0.000000	3.2

## 2.3 Aspect



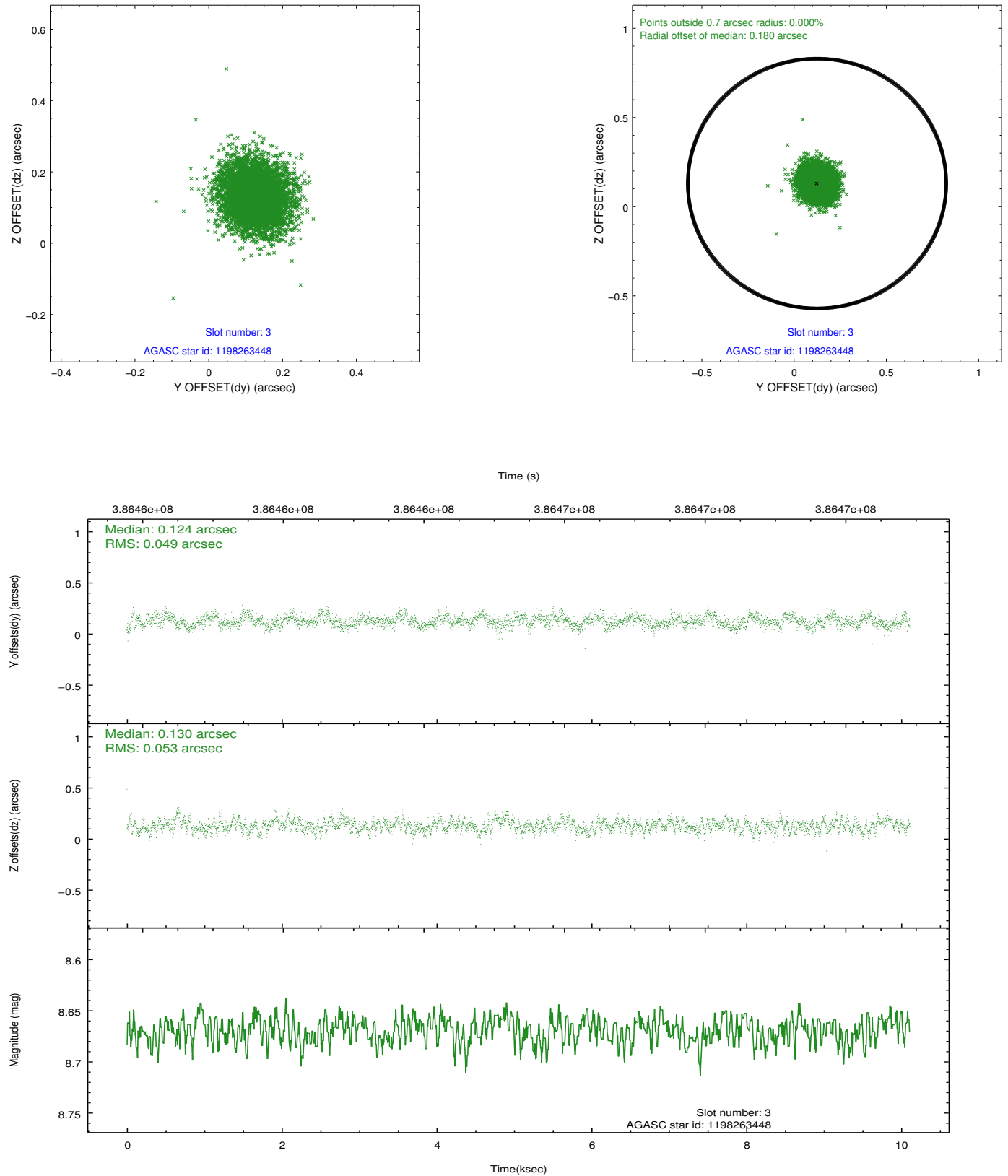


### Slot Statistics

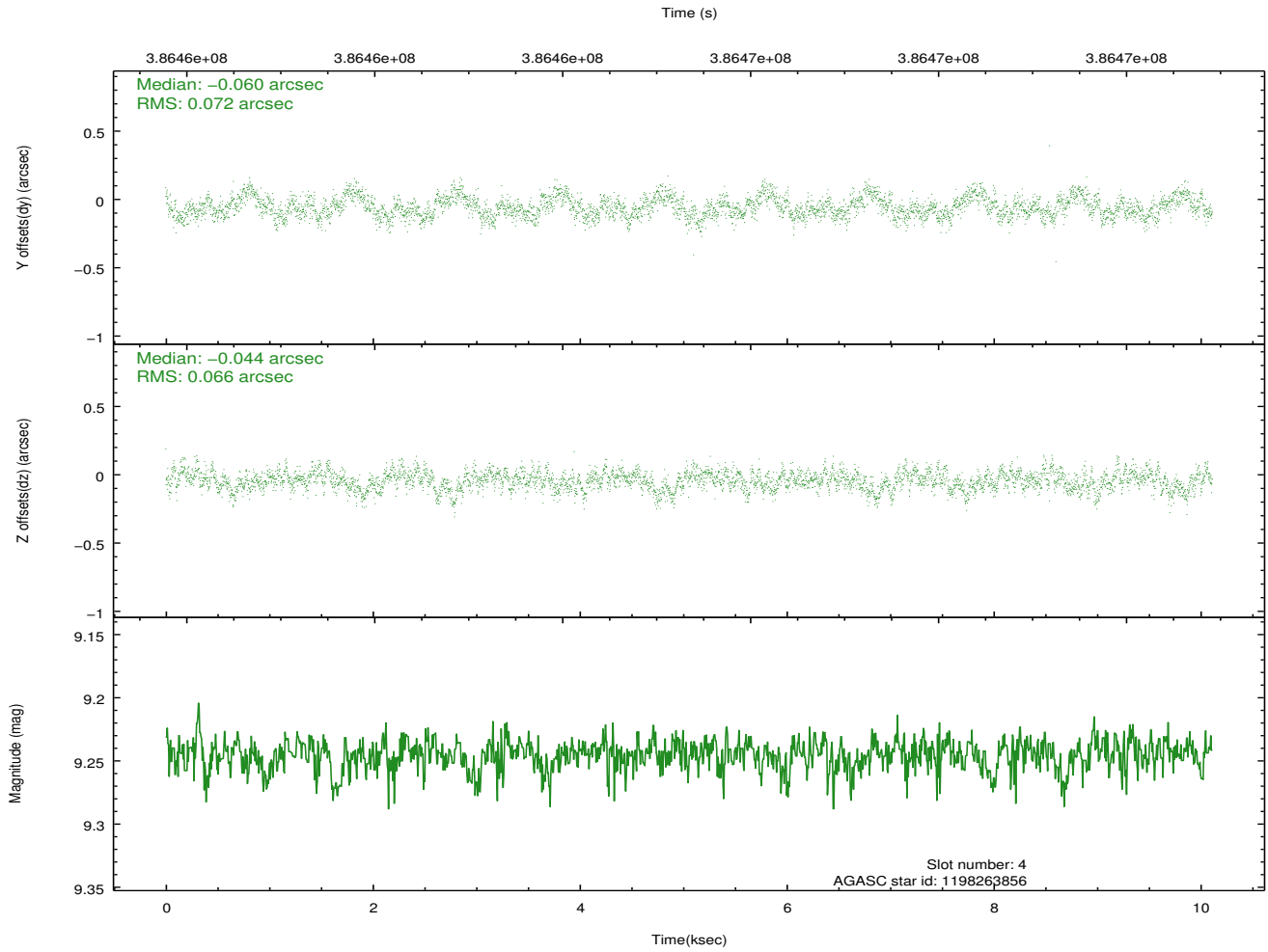
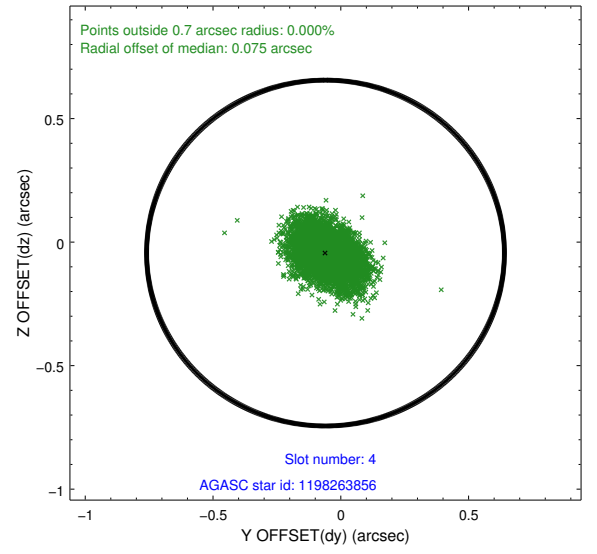
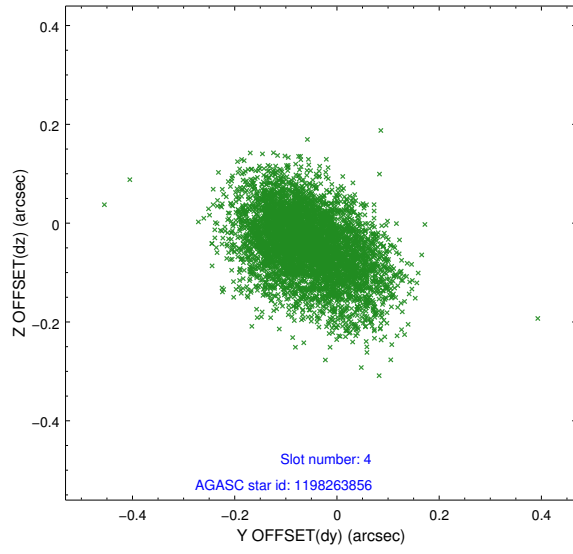
slot	status	id	mag	n_pts	med_dy	med_dz	dr1	dr2	ra	dec	mean_y	mean_z
0	FID	ACIS-I-1	7.00	2466	0.072	-0.036	0.006	0.011	0.000000	0.000000	926.08	-840.72
1	FID	ACIS-I-5	7.00	2467	-0.211	0.075	0.007	0.013	0.000000	0.000000	-1821.99	1056.66
2	FID	ACIS-I-6	7.00	2467	0.048	0.031	0.007	0.011	0.000000	0.000000	391.07	1701.67
3	GUIDE	1198263448	8.67	4931	0.124	0.130	0.077	0.122	23.988893	-72.831877	-2160.62	-2091.86
4	GUIDE	1198263856	9.24	4926	-0.060	-0.044	0.104	0.173	23.344483	-73.858921	-753.93	1391.01
5	GUIDE	1198264032	7.99	4933	0.112	-0.022	0.068	0.107	22.563131	-73.173817	-445.45	-1181.94
6	GUIDE	1198269920	8.27	4932	-0.044	0.115	0.082	0.130	20.316466	-73.033728	1786.26	-2074.45
7	GUIDE	1198272400	9.17	4928	-0.136	-0.173	0.082	0.131	20.411923	-73.620598	2006.64	28.77

## 2.4 Star Slots

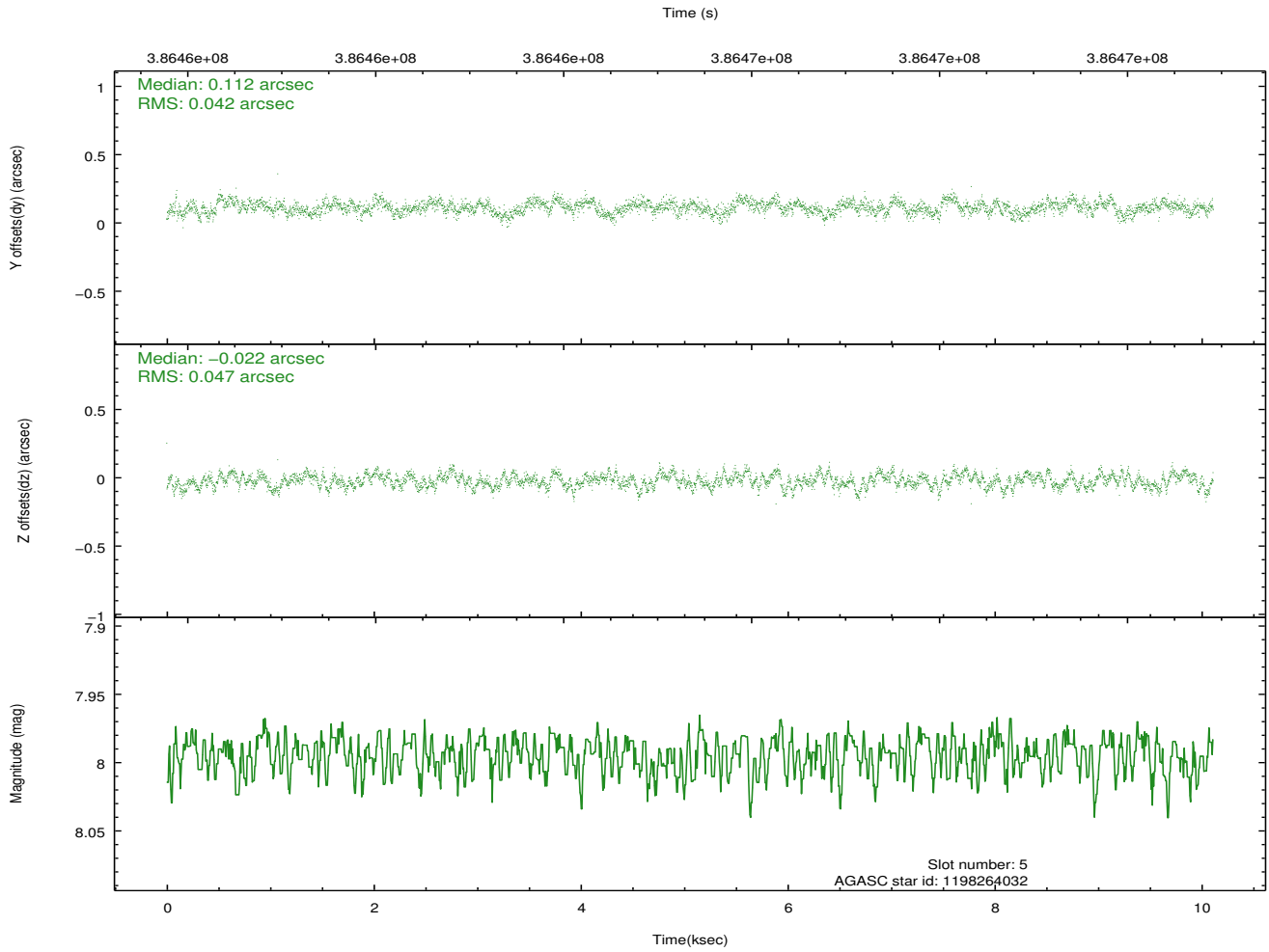
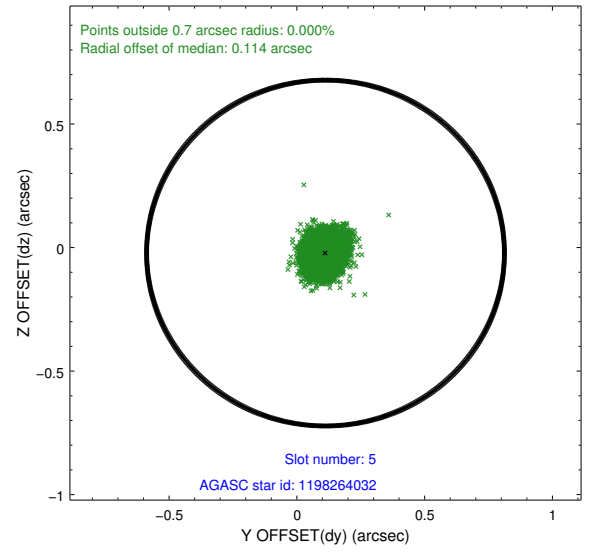
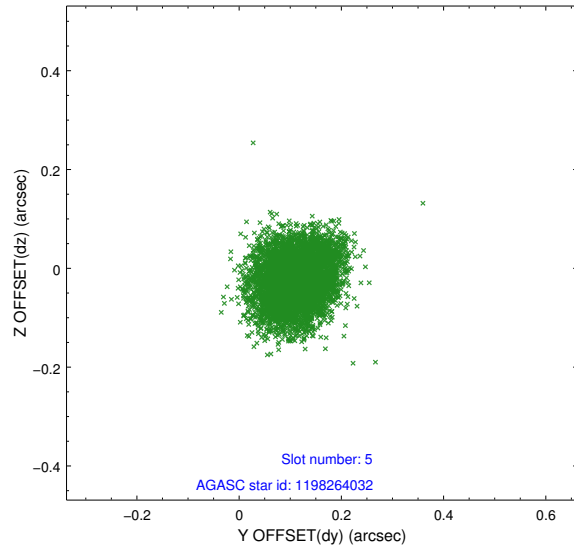
### 2.4.1 Slot 3



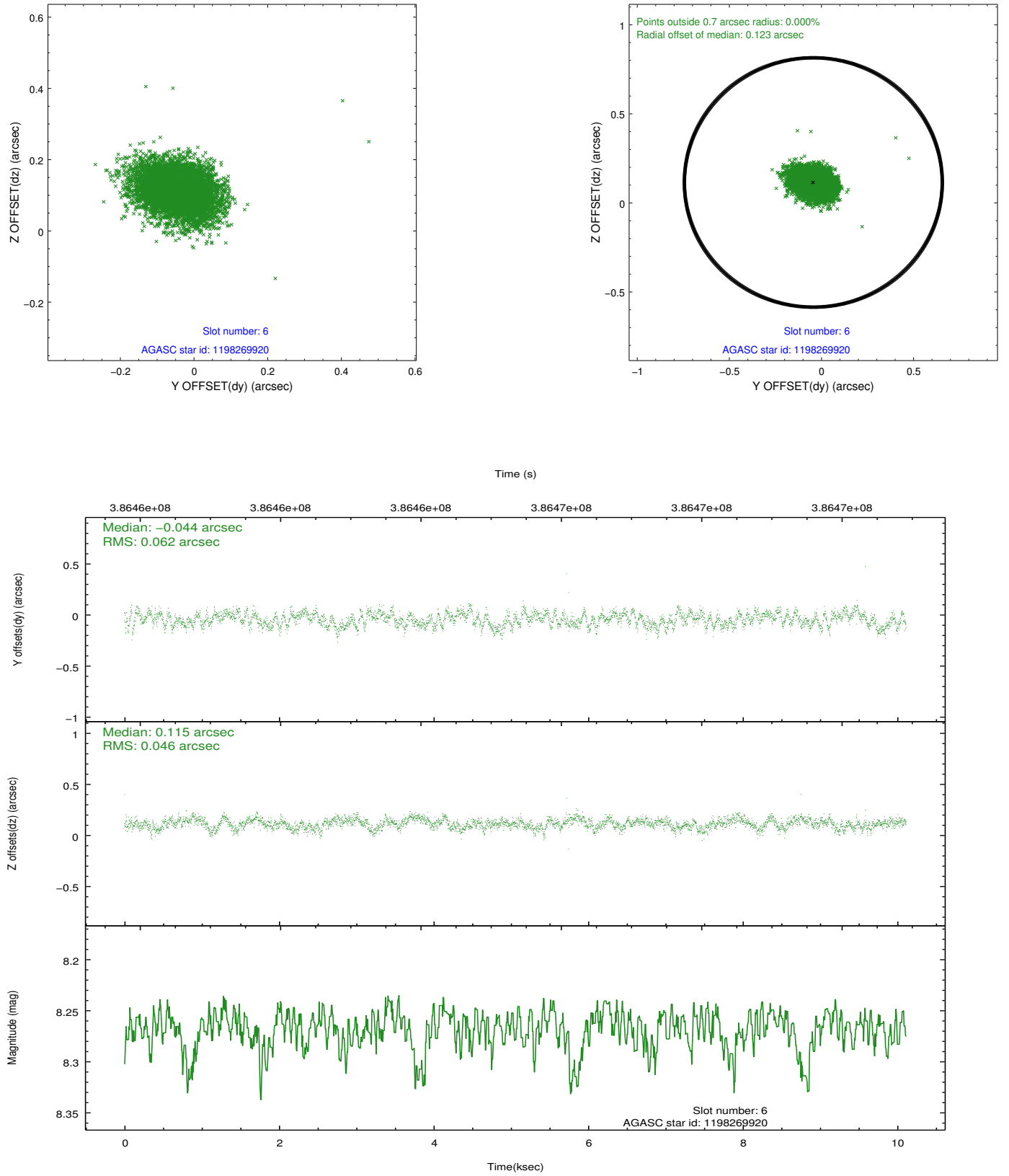
## 2.4.2 Slot 4



### 2.4.3 Slot 5

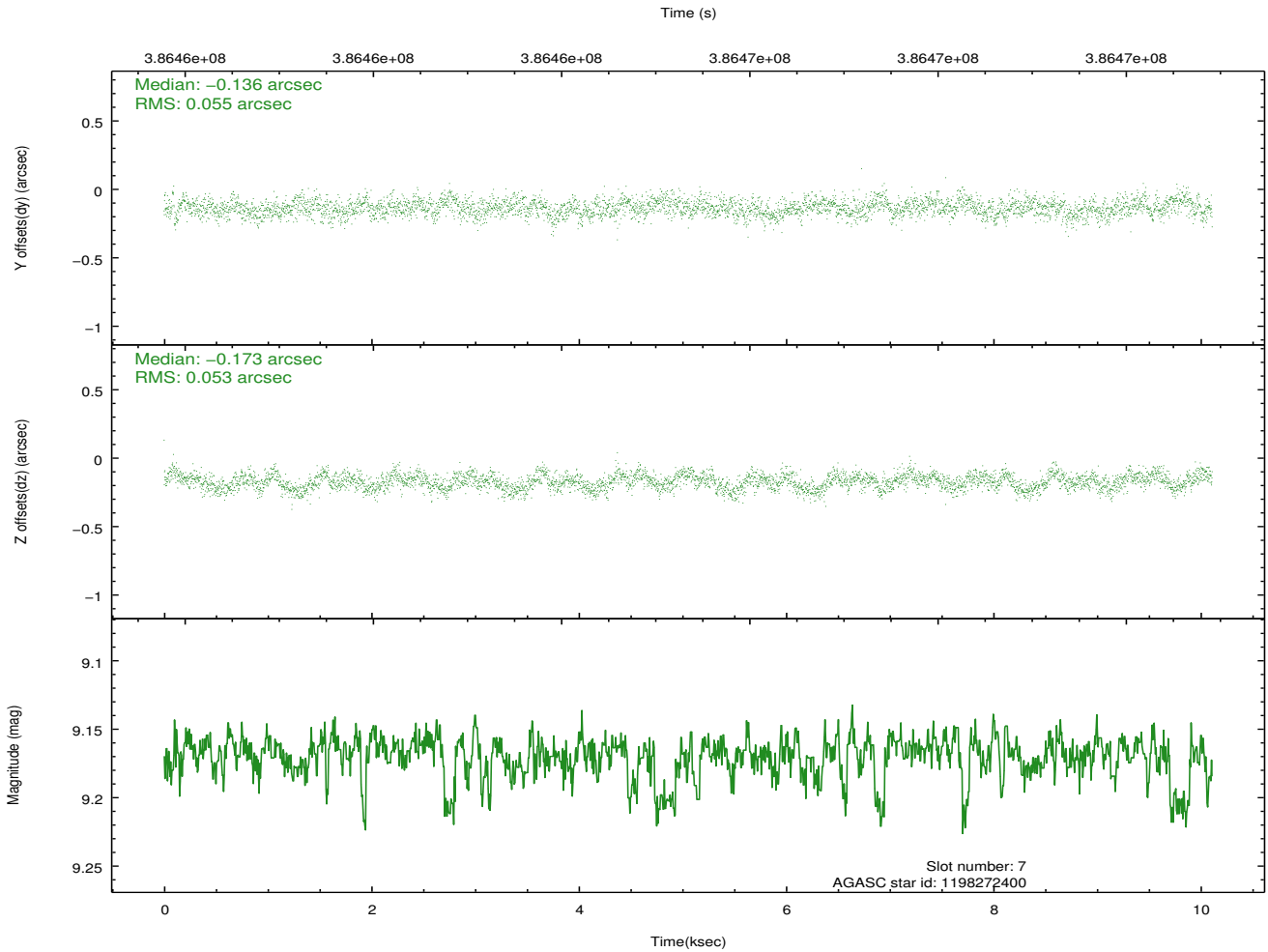
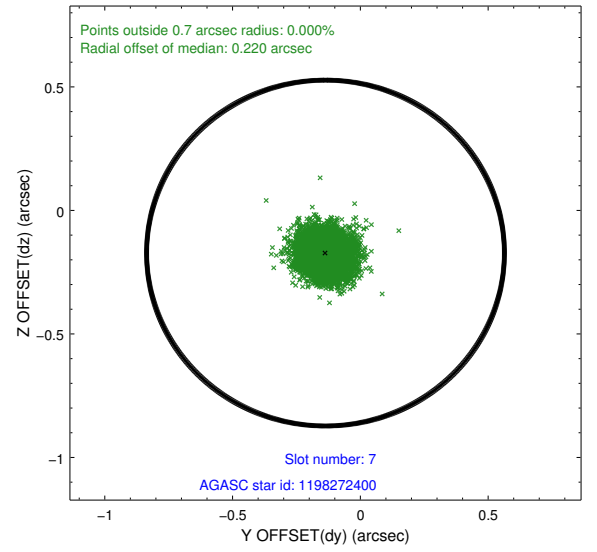
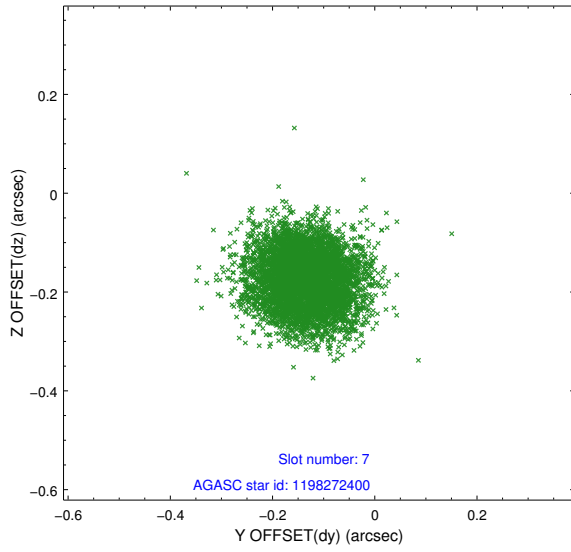


## 2.4.4 Slot 6



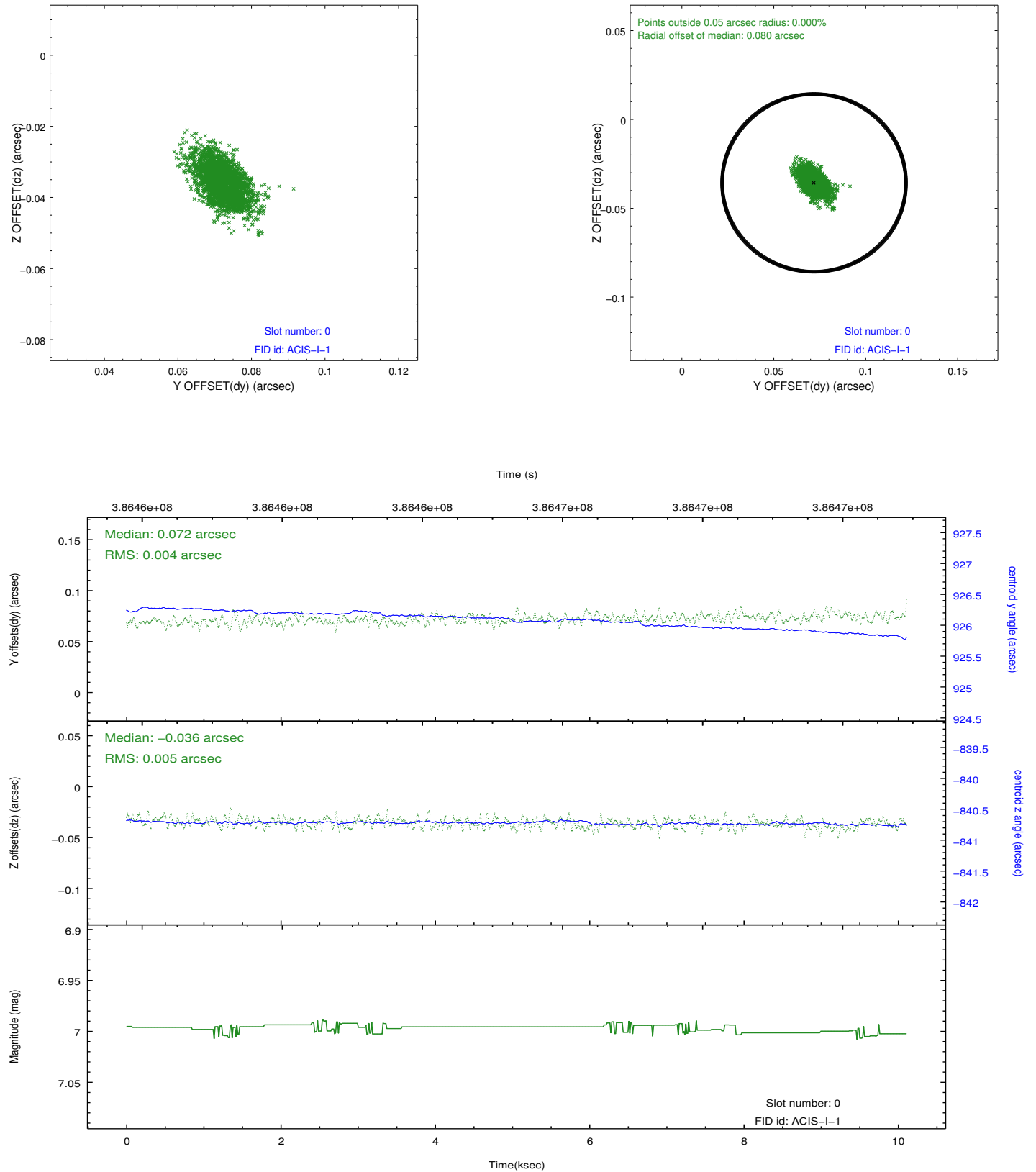


## 2.4.5 Slot 7

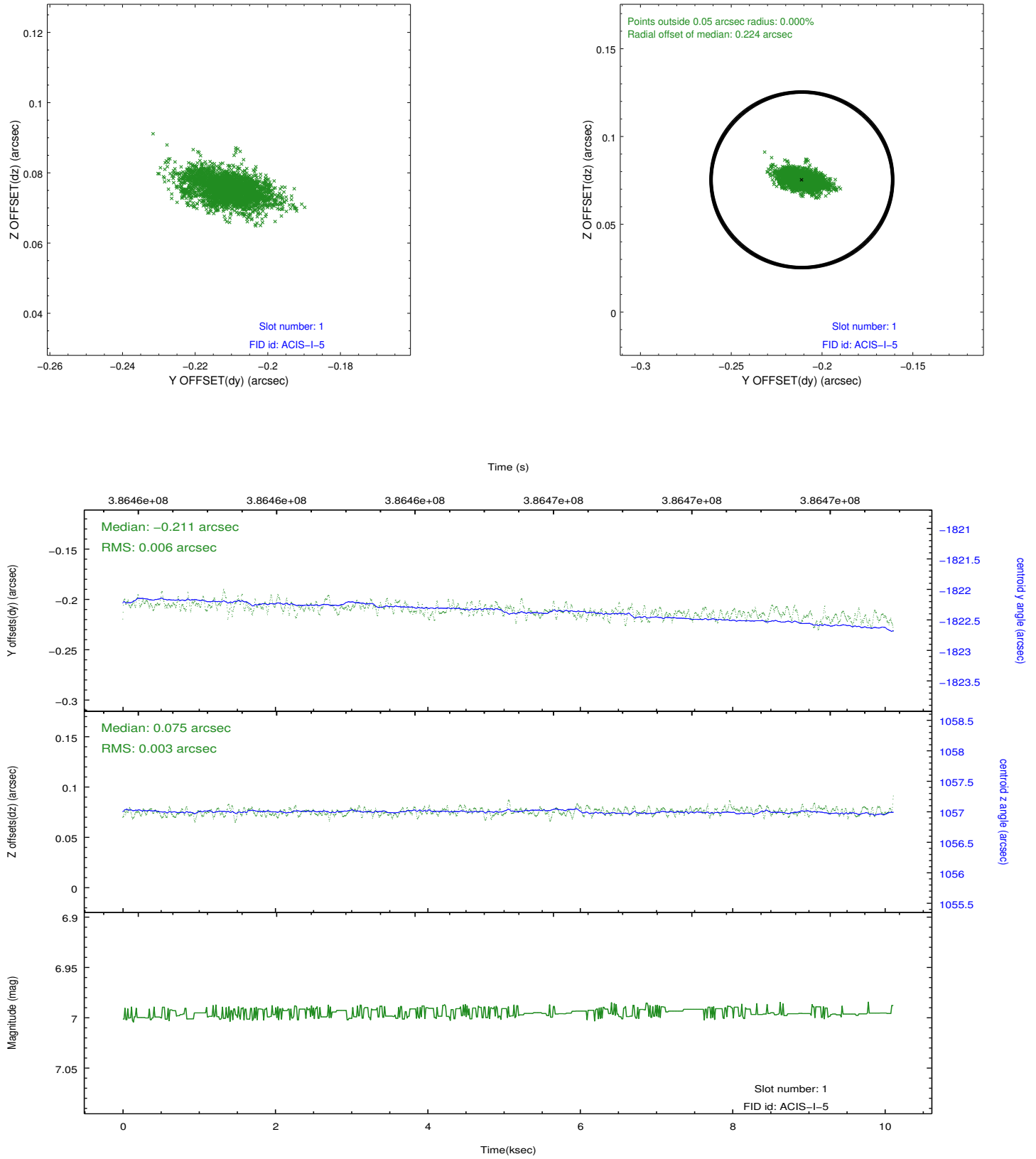


## 2.5 FID Slots

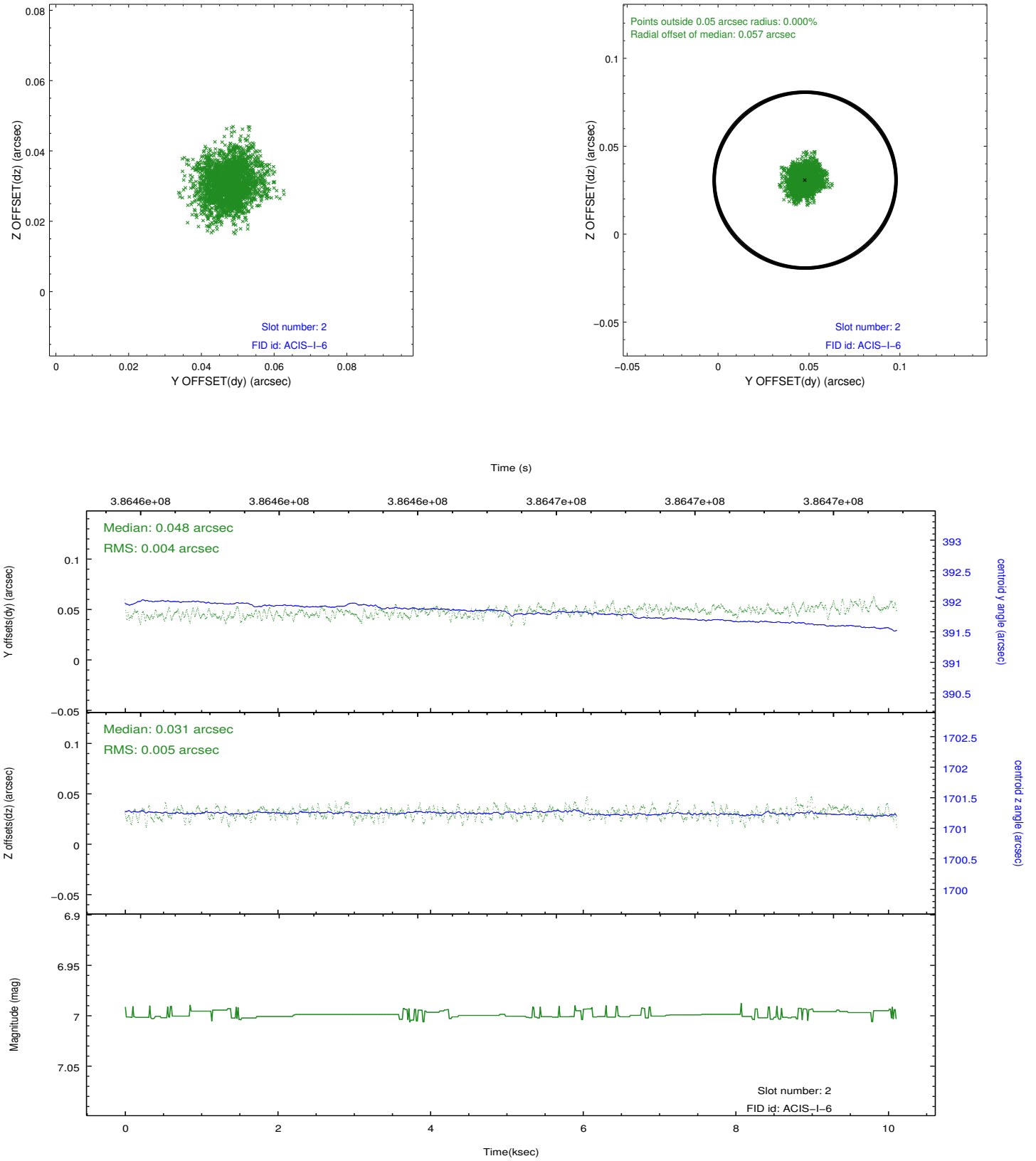
### 2.5.1 Slot 0



## 2.5.2 Slot 1



### 2.5.3 Slot 2



## **A Summary**

### **A.1 Status**

V&V Scientist	Jen Lauer
V&V Date (YYYY-MM-DD)	2012.06.29
V&V Edition	1
V&V Disposition and Status	OK
V&V Charge Time	10.108799962401

### **A.2 Comments**