

V&V Reference Report

L2 ASCDS Version : 8.4.5

Observation 10959 - L2 Version 2
Chandra X-Ray Center

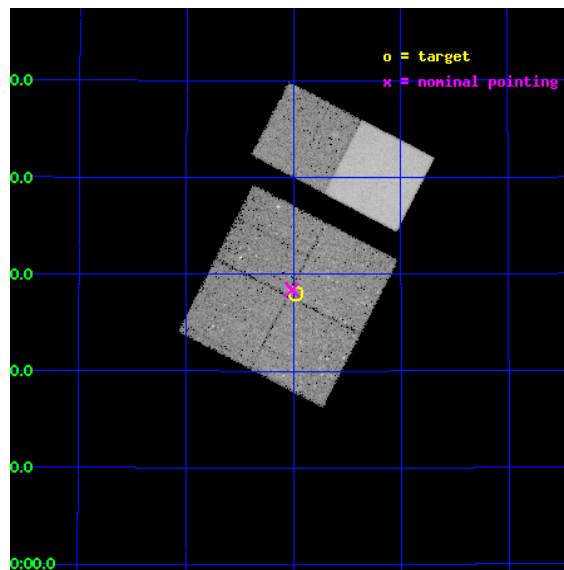
L2 Processing Date : Jun 21 2012

Contents

1	Front	2
2	OBI	3
2.1	OBI	3
2.1.1	Images	3
2.1.2	Bias	3
2.1.3	Parameters	4
2.1.4	Events	4
2.2	Compared Parameters	5
2.3	Aspect	6
2.4	Star Slots	9
2.4.1	Slot 3	9
2.4.2	Slot 4	10
2.4.3	Slot 5	11
2.4.4	Slot 6	12
2.4.5	Slot 7	13
2.5	FID Slots	14
2.5.1	Slot 0	14
2.5.2	Slot 1	15
2.5.3	Slot 2	16
A	Summary	17
A.1	Status	17
A.2	Comments	17

1 Front

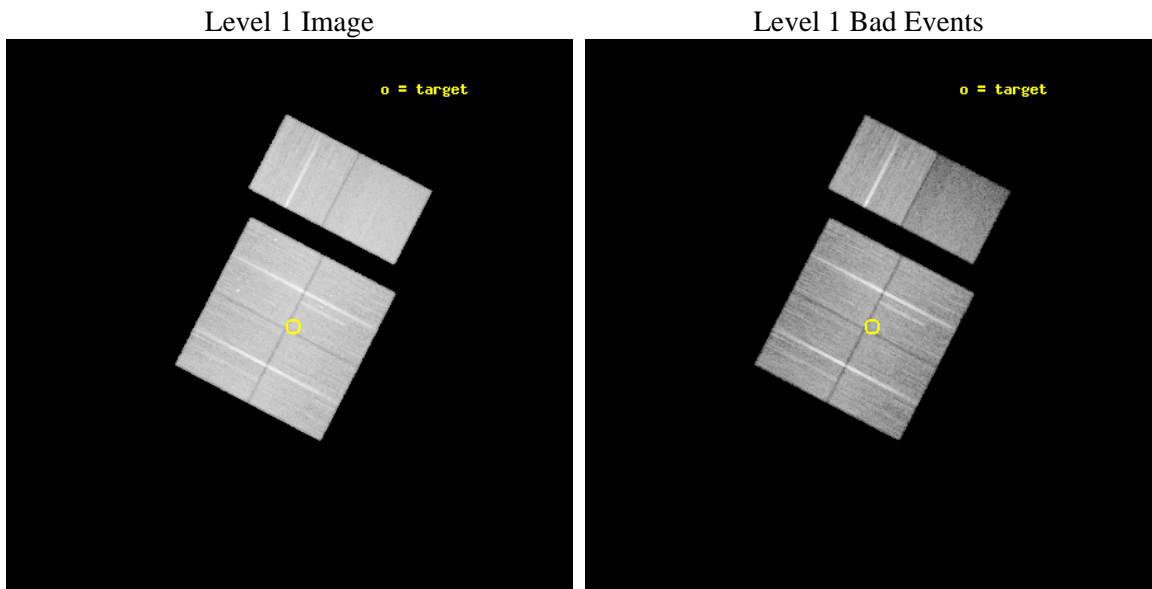
seq_num	200591	Sequence number
obs_id	10959	Observation id
title	The Chandra Cygnus OB2 Survey	Proposal title
observer	Dr. Jeremy Drake	Principal investigator
object	Cygnus OB2	Source name
dtcycle	0	
cycle	P	events from which exps? Prim/Second/Both
ra_targ	308.496267	Observer's specified target RA [deg]
dec_targ	41.467714	Observer's specified target Dec [deg]
ra_nom	308.50394523012	Nominal RA [deg]
dec_nom	41.473388228746	Nominal Dec [deg]
roll_nom	27.403597616193	Nominal Roll [deg]
revision	2	Processing version of data
ontime	28543.999893725	Sum of GTIs [s]
livetime	28182.558579937	Livetime [s]
ontime0	28543.999893725	Sum of GTIs [s]
ontime1	28540.758923411	Sum of GTIs [s]
ontime2	28537.517953098	Sum of GTIs [s]
ontime3	28543.999893725	Sum of GTIs [s]
ontime6	28540.758923411	Sum of GTIs [s]
ontime7	28543.999893725	Sum of GTIs [s]
l2events	208133	Number of level 2 events



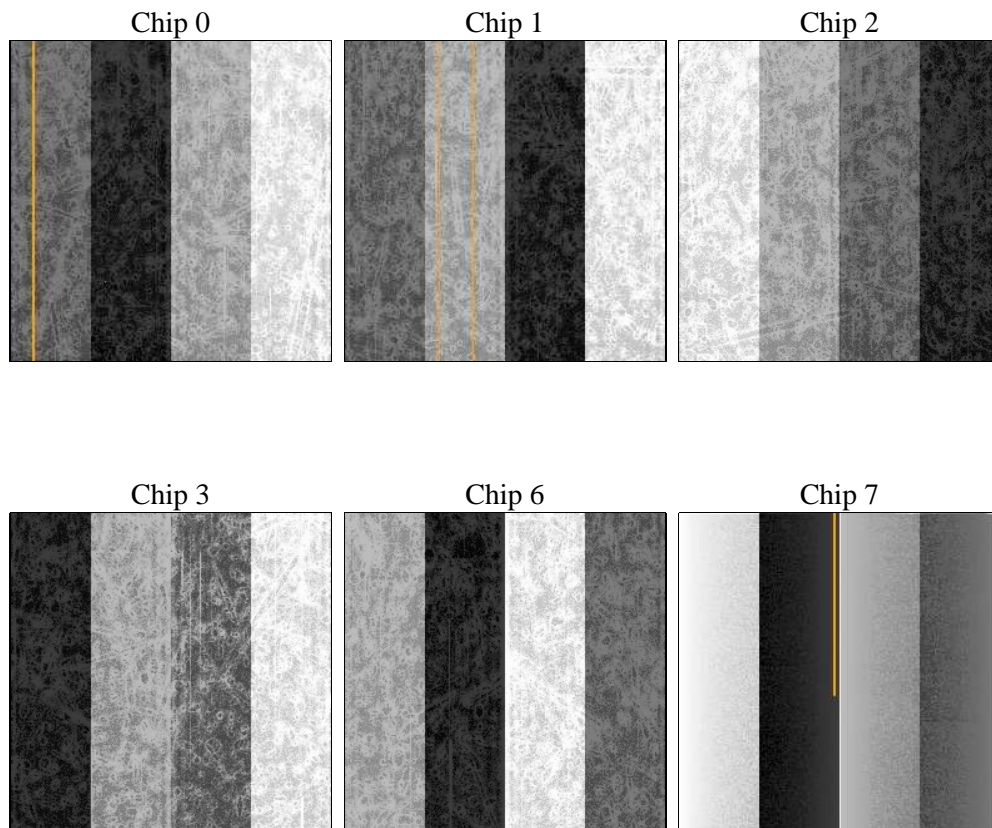
2 OBI

2.1 OBI

2.1.1 Images



2.1.2 Bias



2.1.3 Parameters

obi_num	1	Obi number	sched_exp_time	28500.000000	[s] Scheduled observation exposure time
ascdsver	8.4.5	Processing system revision	ontime	28543.999893725	Sum of GTIs [s]
caldsver	4.4.10	 	ontime0	28543.999893725	Sum of GTIs [s]
date	2012-06-21T15:28:43	Date and time of file creation	ontime1	28540.758923411	Sum of GTIs [s]
revision	2	Processing version of data	ontime2	28537.517953098	Sum of GTIs [s]
			ontime3	28543.999893725	Sum of GTIs [s]
			ontime6	28540.758923411	Sum of GTIs [s]
			ontime7	28543.999893725	Sum of GTIs [s]
			l1events	1277270	Number of level 1 events

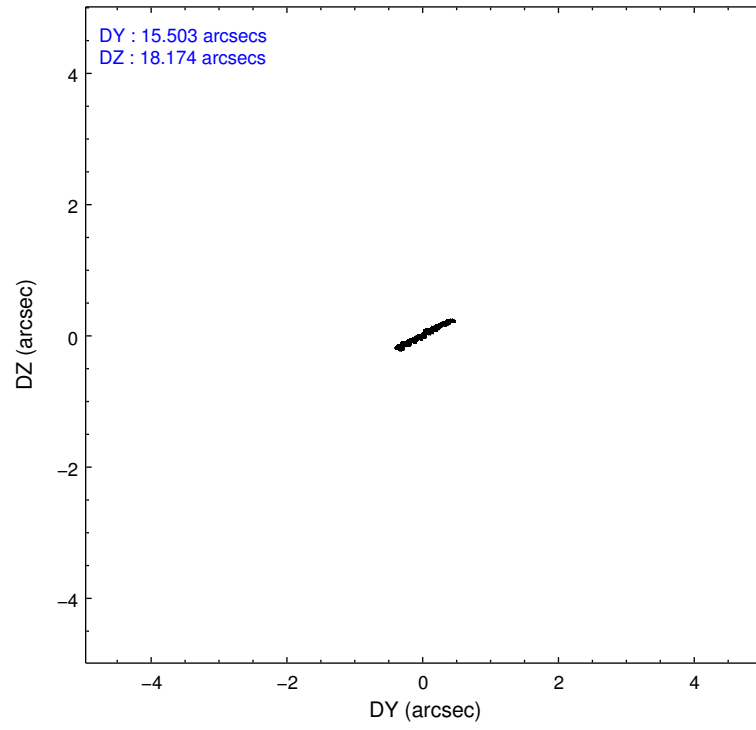
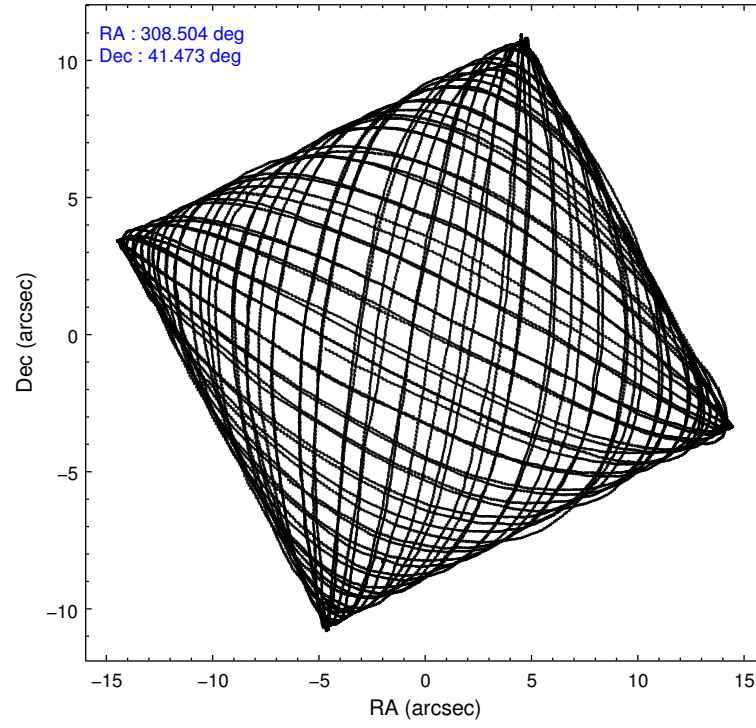
2.1.4 Events

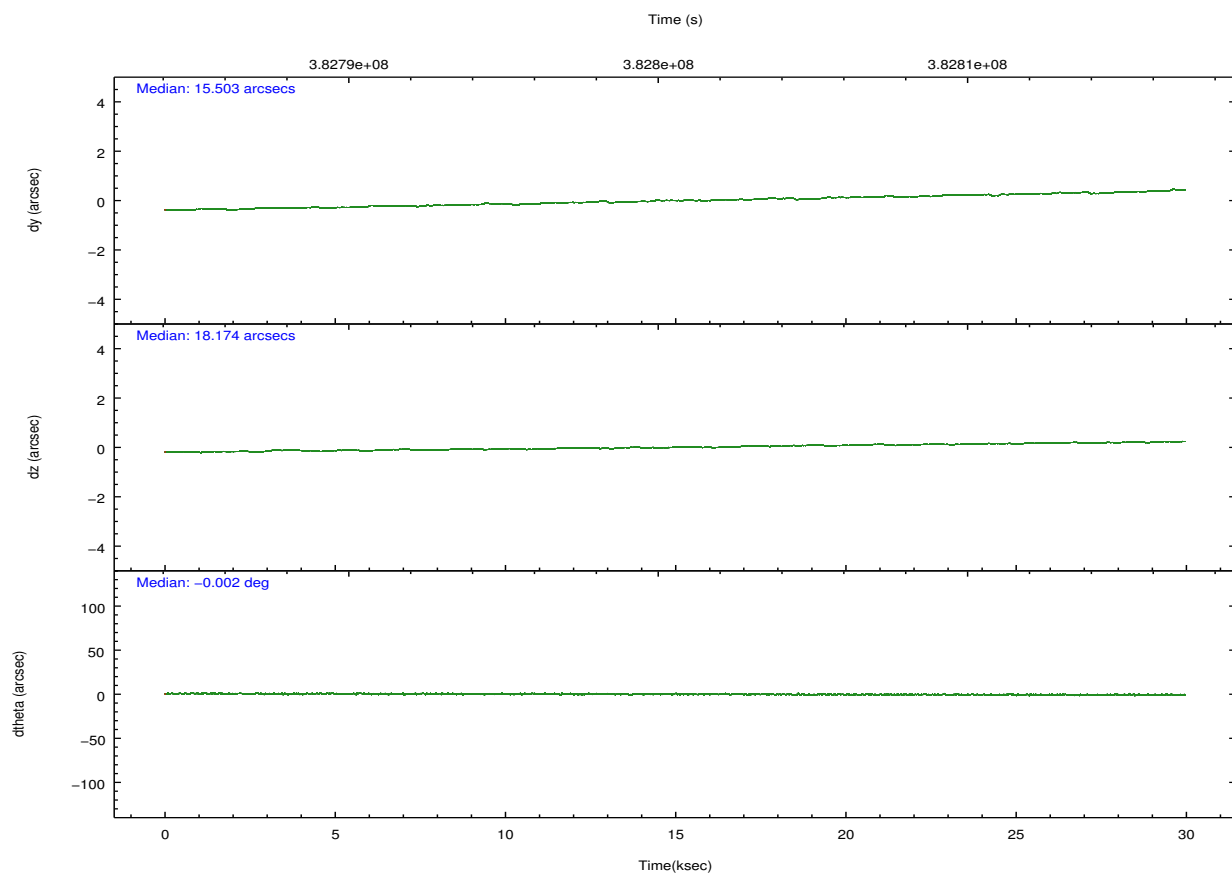
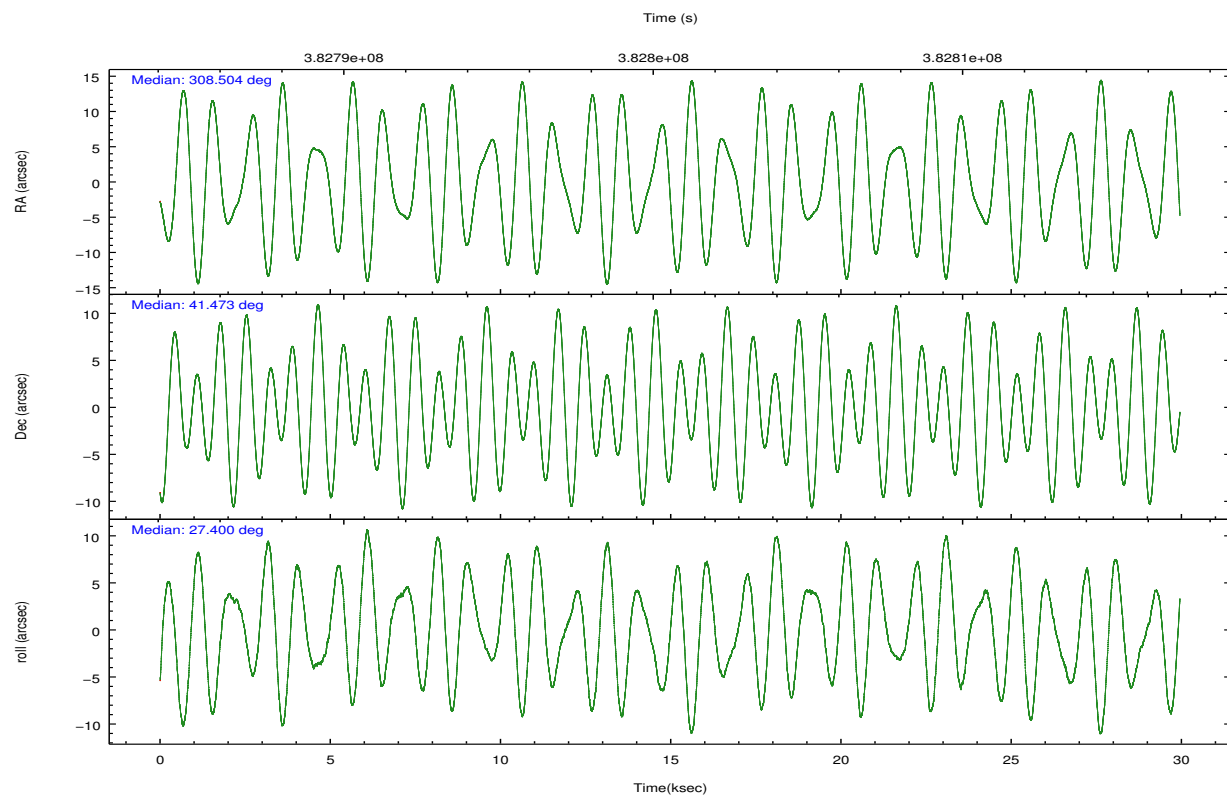
	ccd 0	ccd 1	ccd 2	ccd 3	ccd 6	ccd 7		ccd 0	ccd 1	ccd 2	ccd 3	ccd 6	ccd 7
level 1 events	199056	199524	221718	216502	223522	216948	grade 0 events	9450	11681	10108	11028	9047	10877
rejected events	174868	171938	197362	191443	199488	110503		4%	5%	4%	5%	4%	5%
rejected %	87%	86%	89%	88%	89%	50%	grade 1 events	127	125	151	157	130	306
								0%	0%	0%	0%	0%	0%
							grade 2 events	5746	5752	5596	5177	5380	22577
								2%	2%	2%	2%	2%	10%
							grade 3 events	2458	2770	2341	2368	2402	9958
								1%	1%	1%	1%	1%	4%
							grade 4 events	2303	2605	2368	2396	2395	9780
								1%	1%	1%	1%	1%	4%
							grade 5 events	6832	7634	6556	7773	7996	23001
								3%	3%	2%	3%	3%	10%
							grade 6 events	4234	4788	3953	4091	4814	53278
								2%	2%	1%	1%	2%	24%
							grade 7 events	167906	164169	190645	183512	191358	87171
								84%	82%	85%	84%	85%	40%

2.2 Compared Parameters

Parameter	Planned	Actual	Parameter	Planned	Actual
Instrument	ACIS	ACIS	Obspar format version number	7	7
Detector	ACIS-012367	ACIS-012367	Obspar file type	PREDICTED	ACTUAL
Grating	NONE	NONE	Obspar update status	NONE	UPDATED
Data mode	VFAINT	VFAINT	CCD I0 on	Y	Y
Observation mode	POINTING	POINTING	CCD I1 on	Y	Y
[deg] Pointing RA	308.484297	308.5039452301194	CCD I2 on	Y	Y
[deg] Pointing Dec	41.450179	41.47338822874649	CCD I3 on	Y	Y
[deg] Pointing Roll	27.207923	27.40359761619286	CCD S0 on	N	N
[mm] SIM focus pos	-0.782348	-0.7809083437167272	CCD S1 on	N	N
[mm] SIM defocus	0	0.001439871863259334	CCD S2 on	O2	Y
[mm] SIM translation stage pos	-233.592463	-233.5874344608287	CCD S3 on	O1	Y
[mm] SIM translation stage offset	0	-0.005018542100998502	CCD S4 on	N	N
[s] Observation start time (MET)	382787024.184000	382785387.14398	CCD S5 on	N	N
Observation start date	2010-02-17T09:42:38	2010-02-17T09:16:27	Number of optional ACIS chips dropped	0	0
[s] Observation end time (MET)	382815524.184000	382816438.49555	On-chip summing requested	N	N
Observation end date	2010-02-17T17:37:38	2010-02-17T17:53:58	Subarray requested	NONE	NONE
Read mode	TIMED	TIMED	Alternating exposures requested	N	N
			[s] Primary exposure time	0.000000	3.2

2.3 Aspect



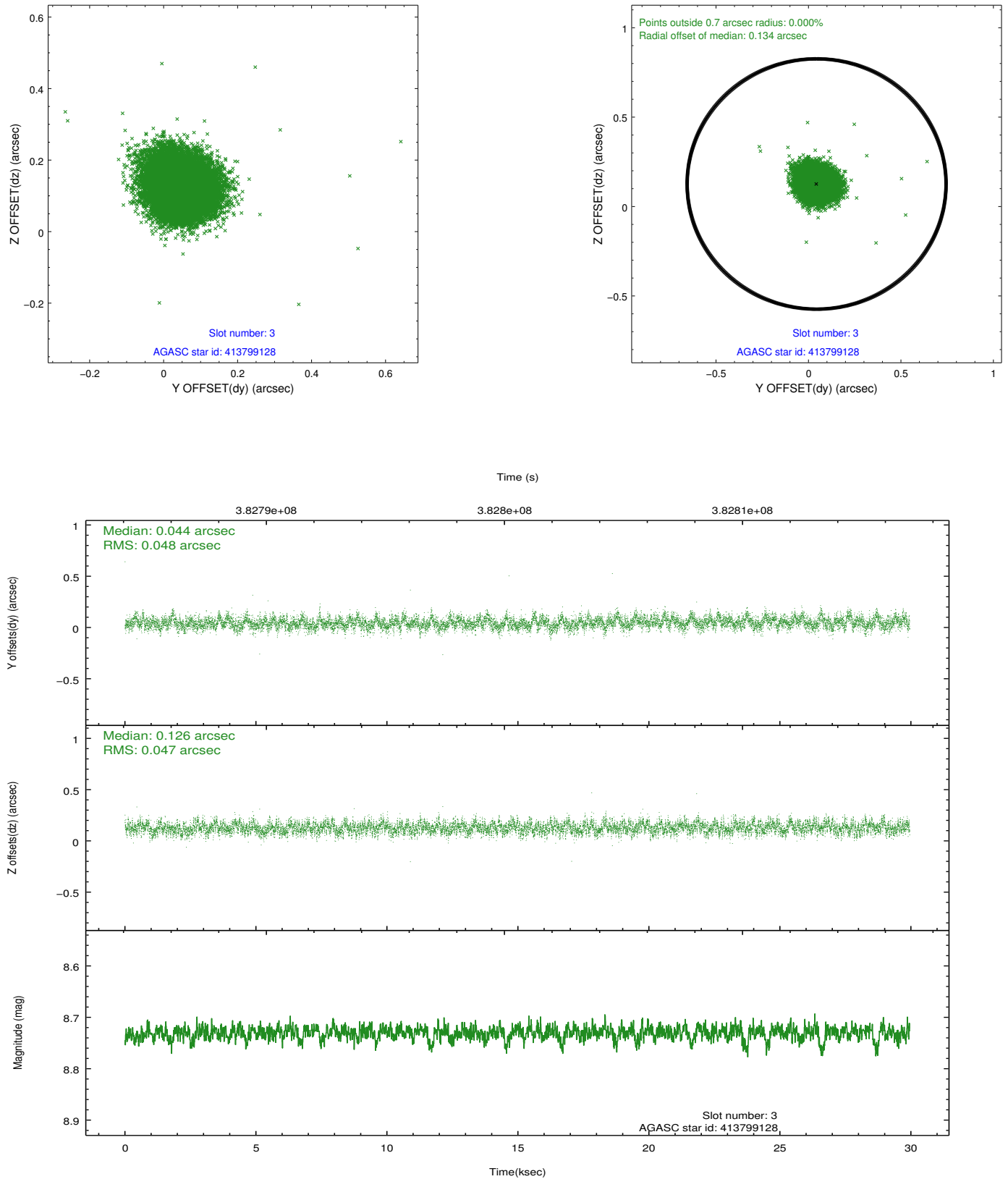


Slot Statistics

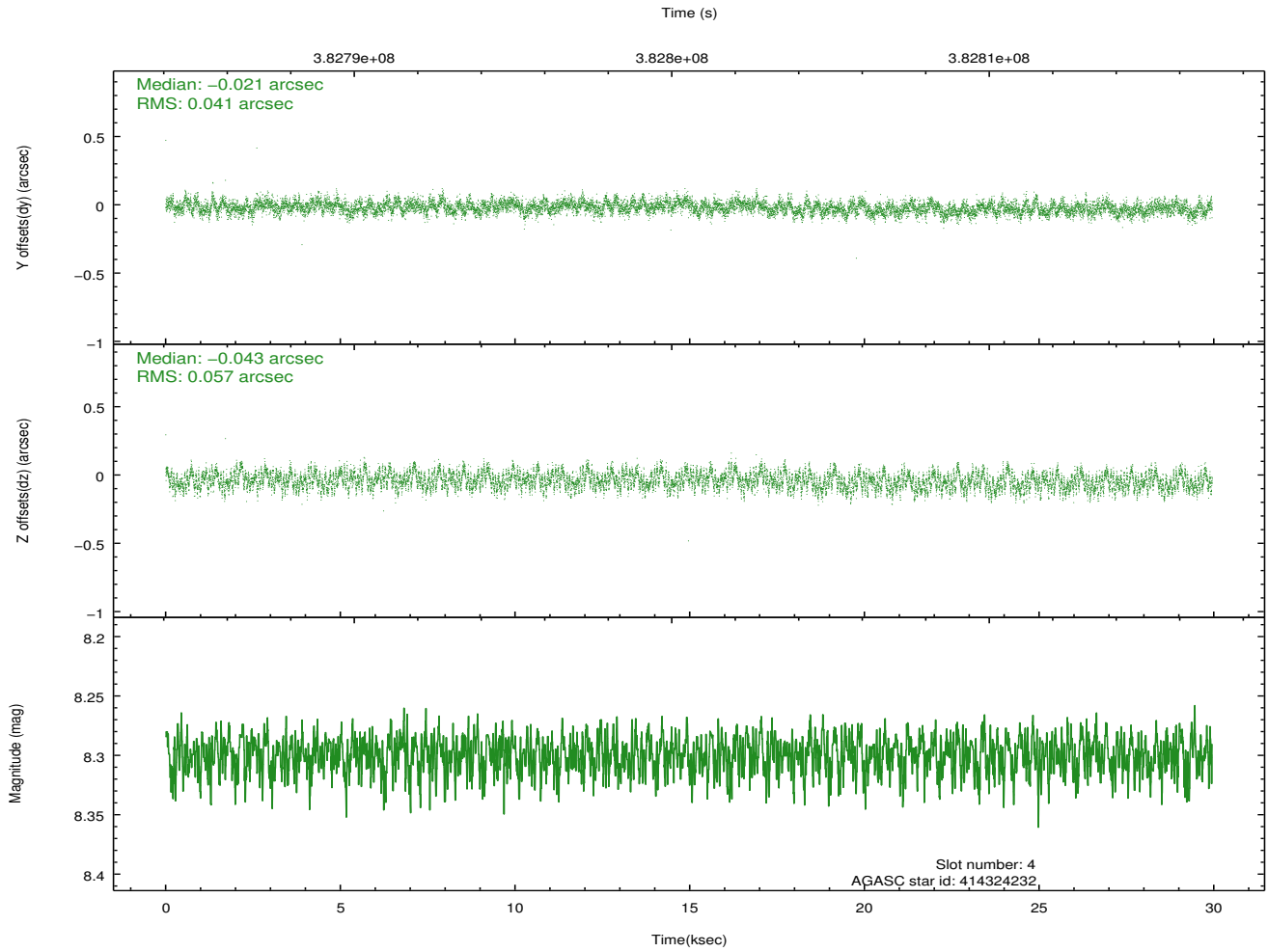
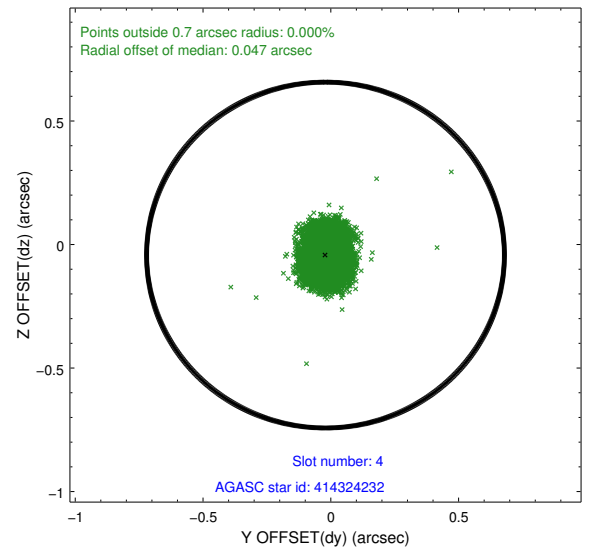
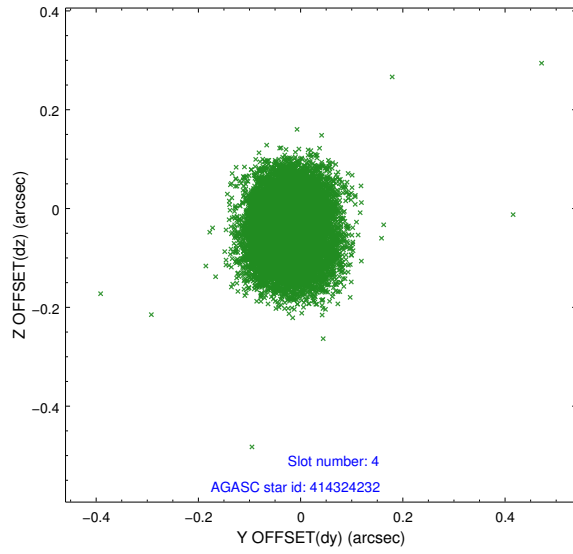
slot	status	id	mag	n_pts	med_dy	med_dz	dr1	dr2	ra	dec	mean_y	mean_z
0	FID	ACIS-I-1	7.00	7306	0.039	0.016	0.021	0.031	0.000000	0.000000	923.98	-841.85
1	FID	ACIS-I-5	6.99	7306	-0.203	0.051	0.016	0.025	0.000000	0.000000	-1824.32	1055.63
2	FID	ACIS-I-6	7.01	7306	0.073	0.001	0.008	0.014	0.000000	0.000000	389.48	1700.17
3	GUIDE	413799128	8.73	14602	0.044	0.126	0.071	0.113	307.948219	41.110579	-1849.54	-418.26
4	GUIDE	414324232	8.30	14606	-0.021	-0.043	0.075	0.120	308.637806	41.996627	1264.77	1562.31
5	GUIDE	414326136	7.37	14610	-0.082	-0.188	0.062	0.103	308.256176	41.473642	-507.76	357.53
6	GUIDE	414327224	8.00	14608	-0.002	0.042	0.066	0.105	309.355439	41.393115	2004.37	-1247.28
7	GUIDE	413796456	8.68	14597	0.059	0.058	0.089	0.148	308.312084	40.613132	-1795.67	-2464.32

2.4 Star Slots

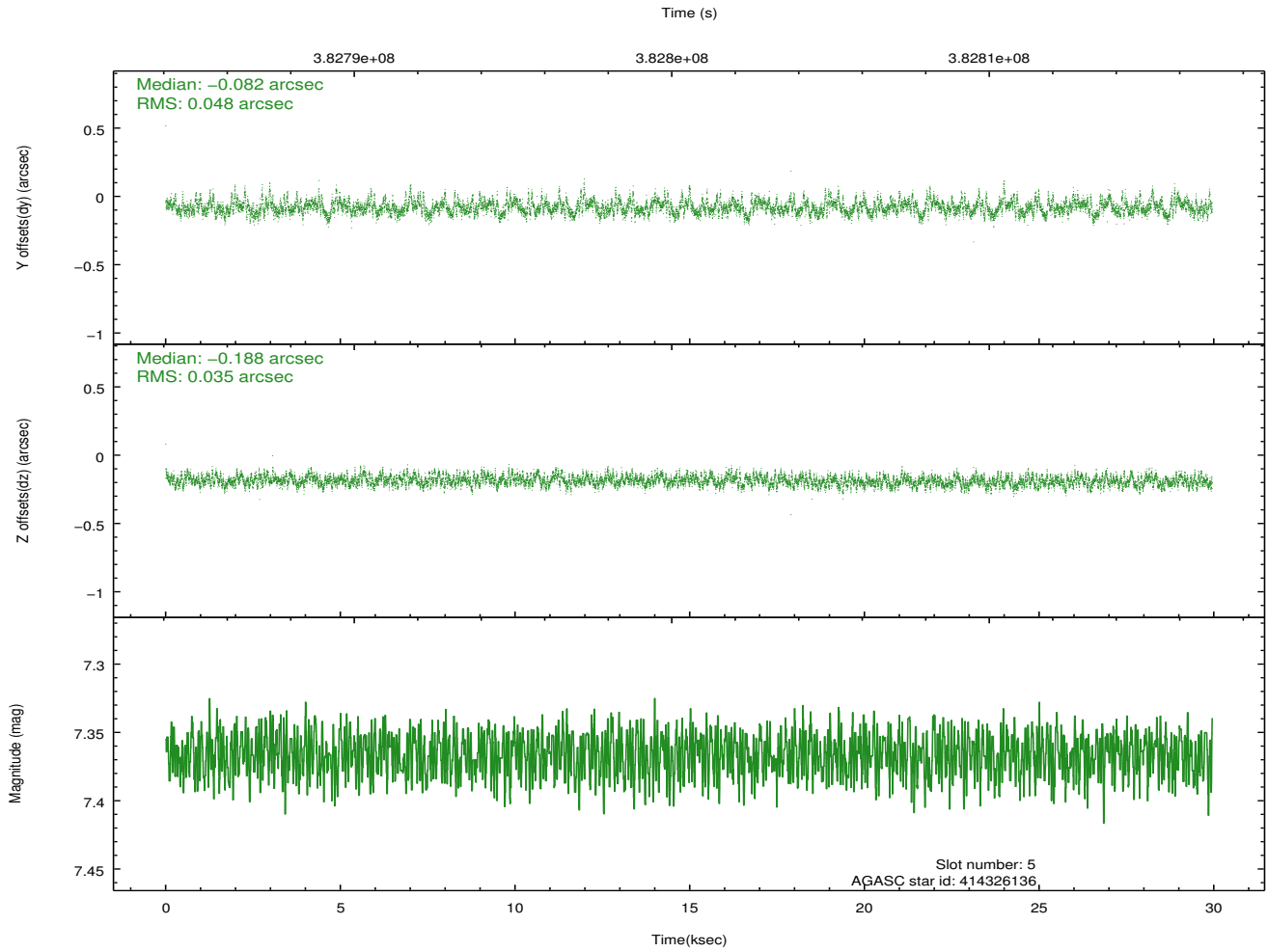
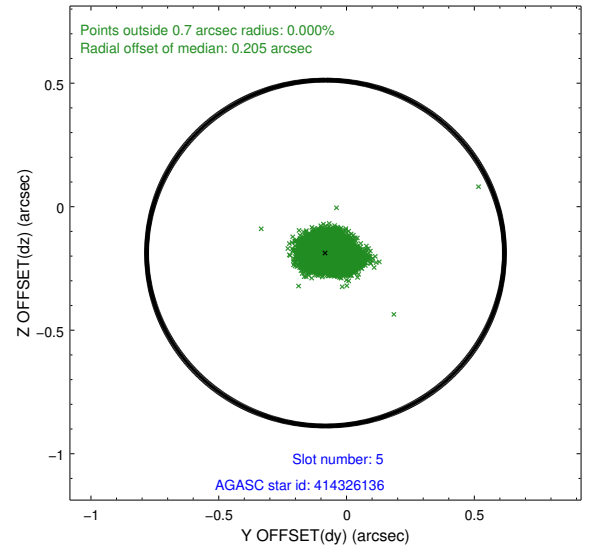
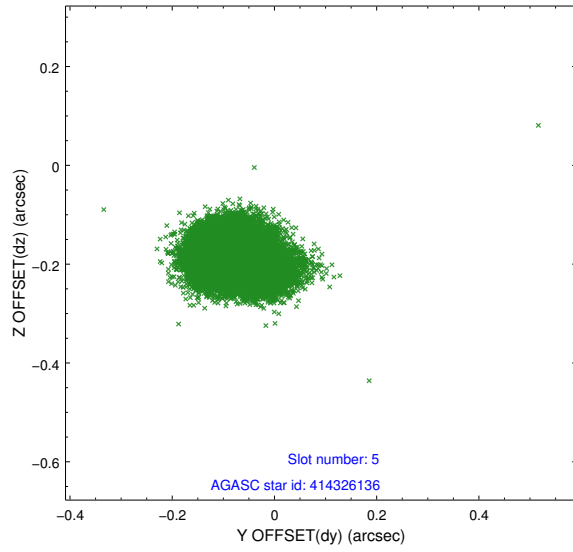
2.4.1 Slot 3



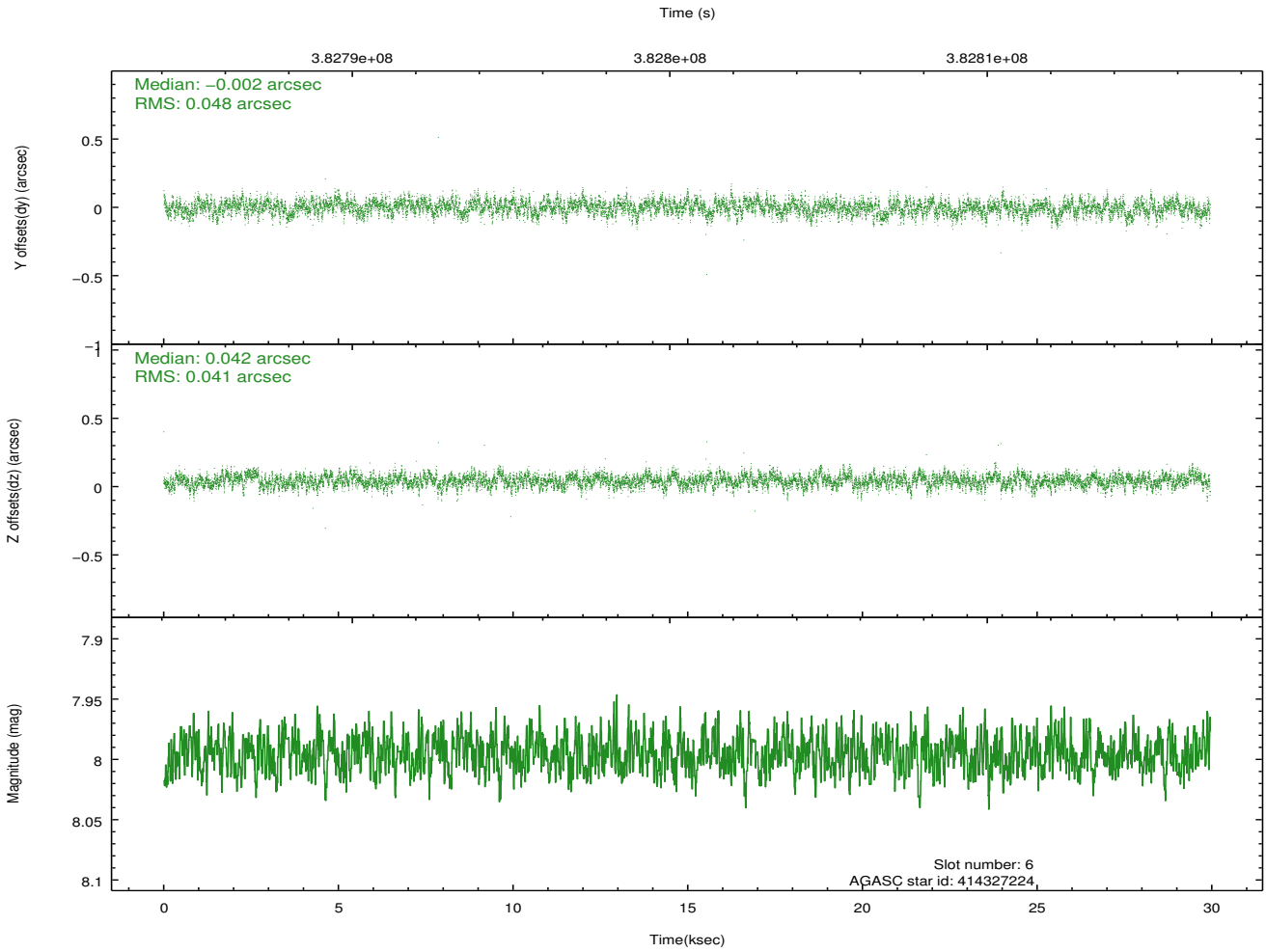
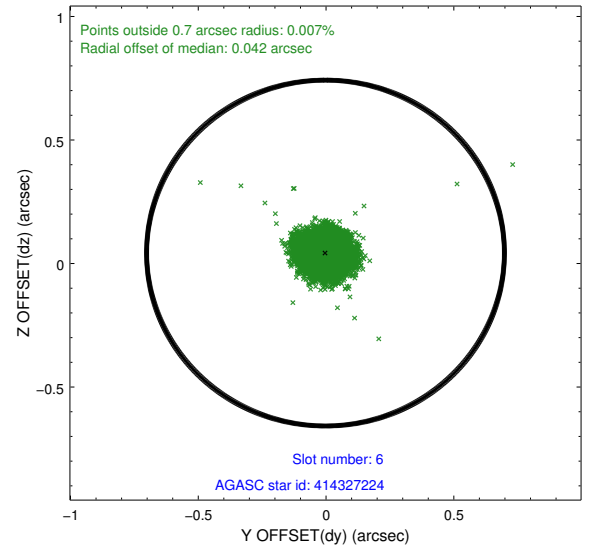
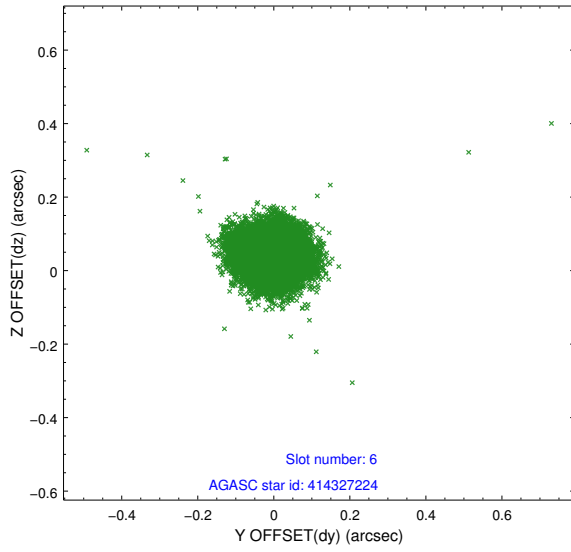
2.4.2 Slot 4



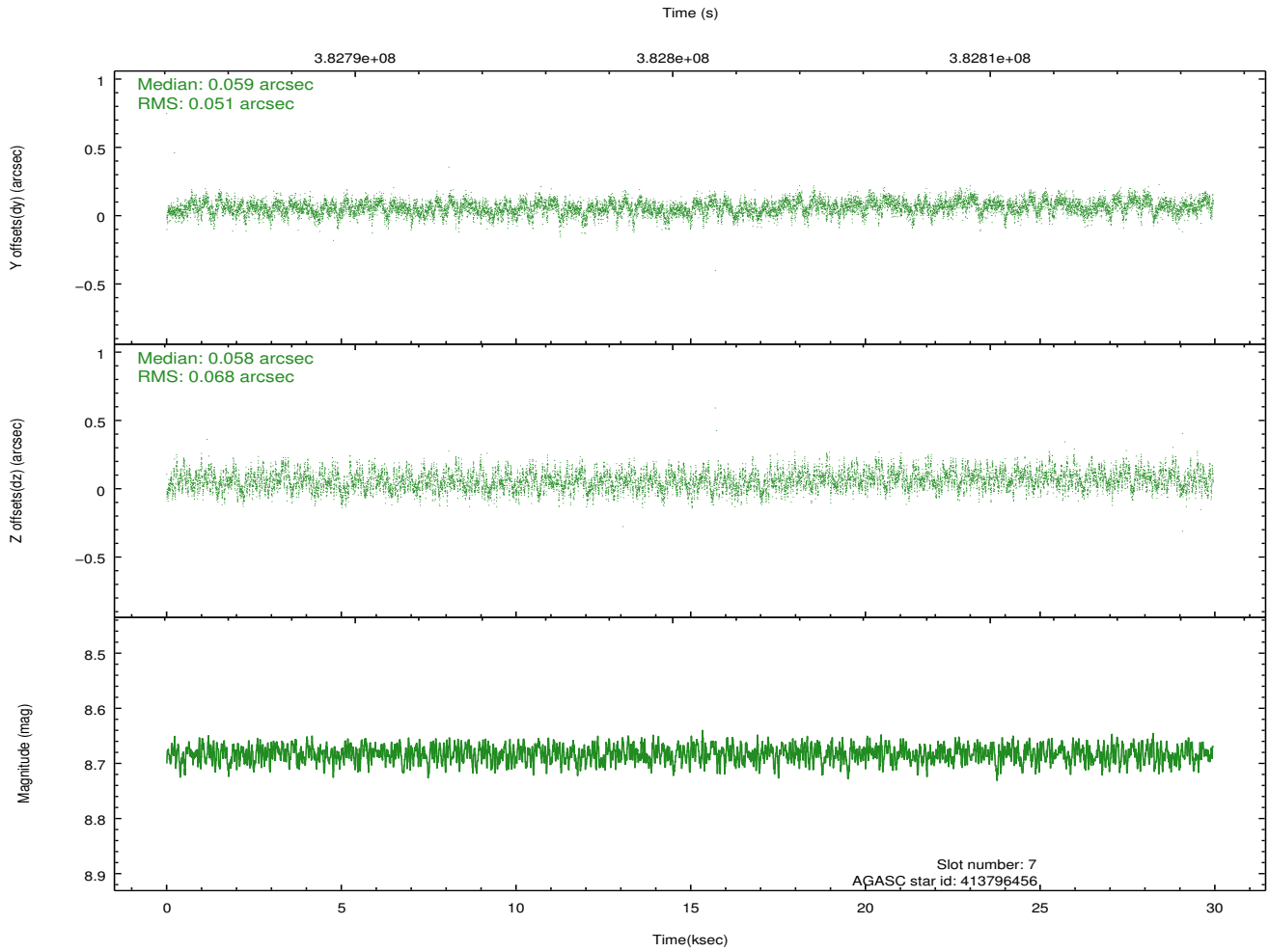
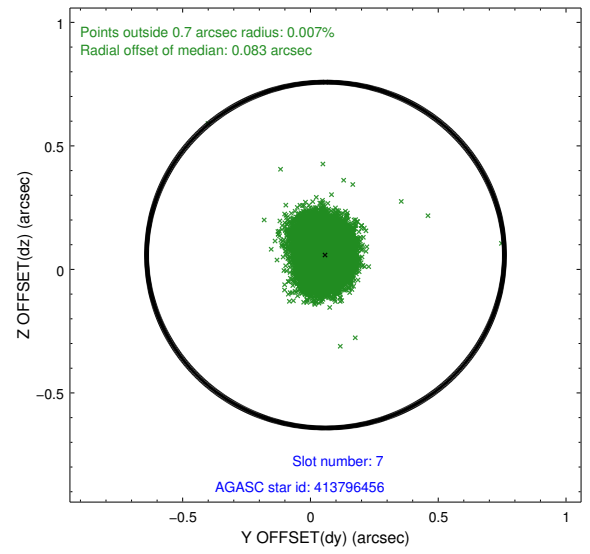
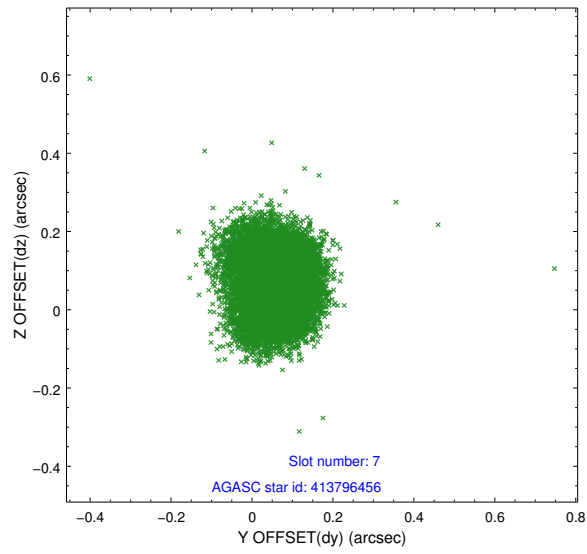
2.4.3 Slot 5



2.4.4 Slot 6

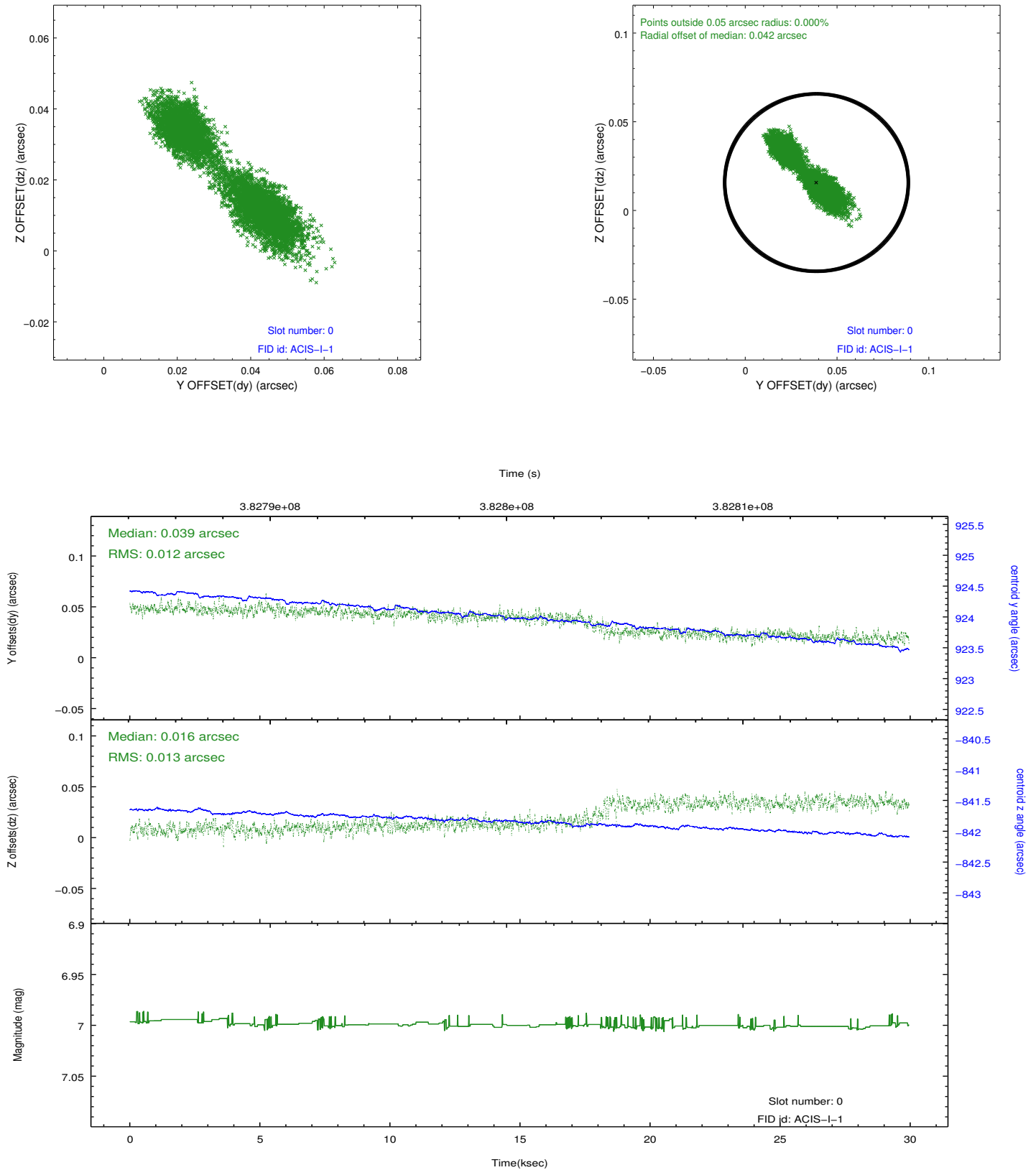


2.4.5 Slot 7

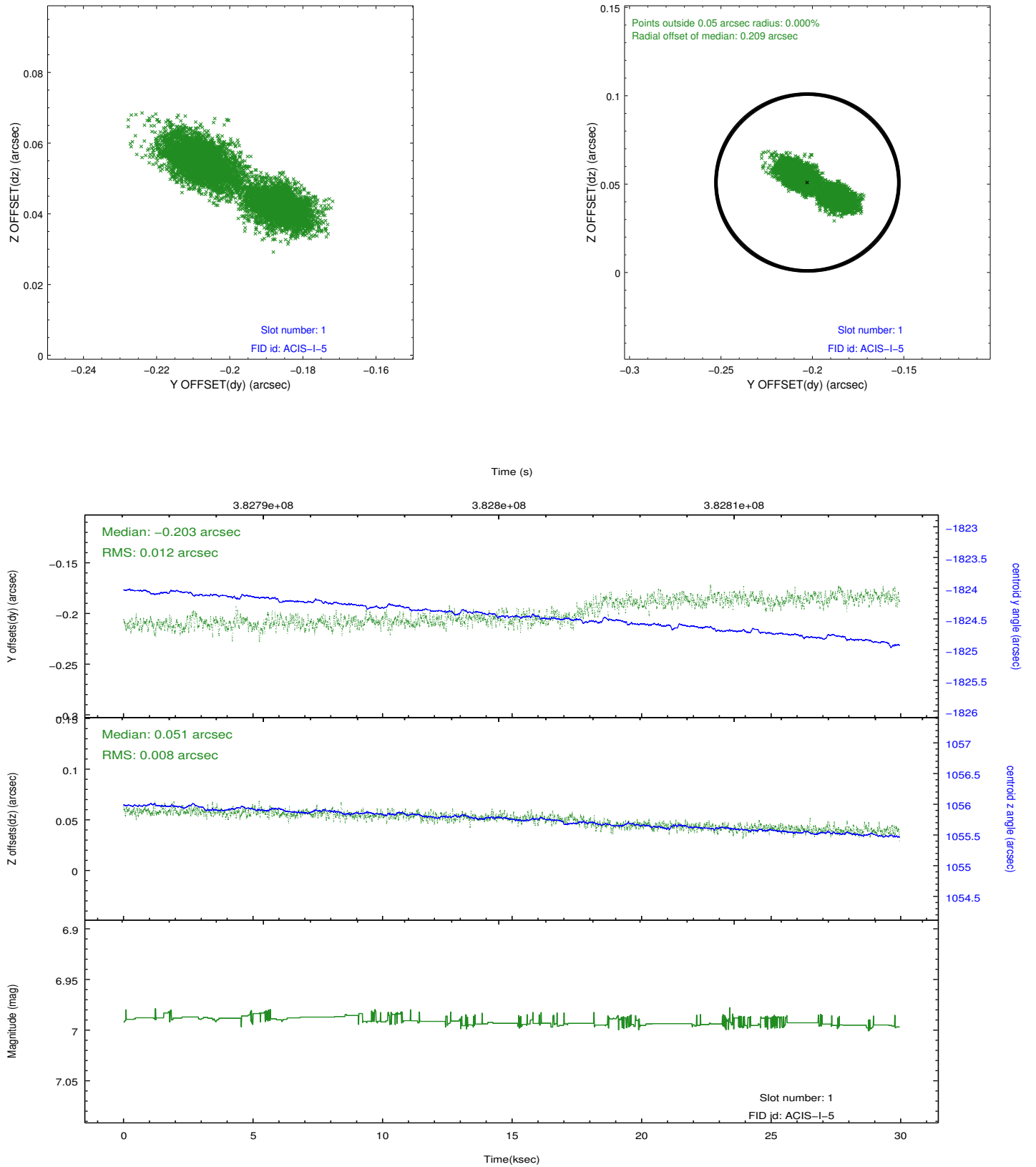


2.5 FID Slots

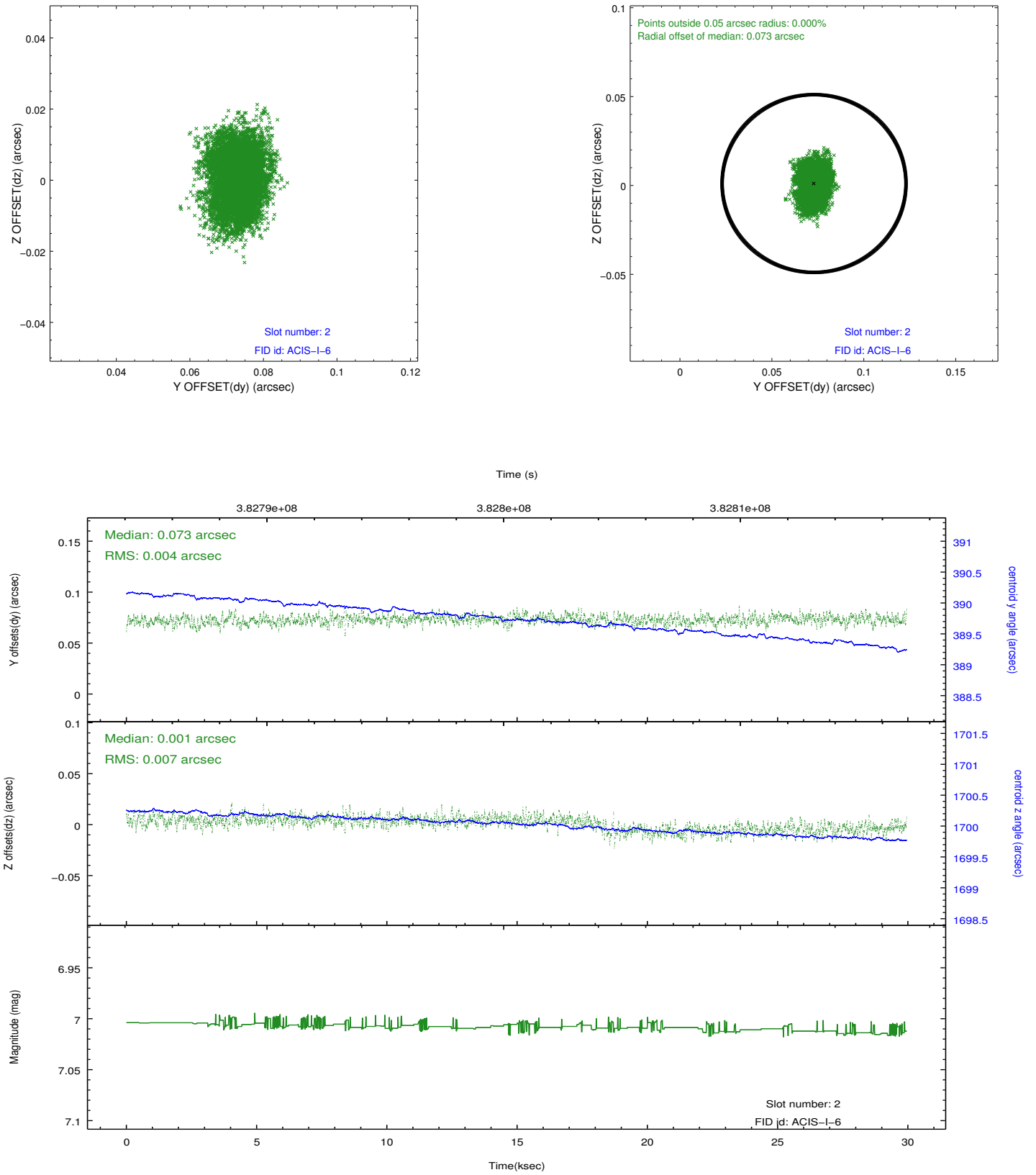
2.5.1 Slot 0



2.5.2 Slot 1



2.5.3 Slot 2



A Summary

A.1 Status

V&V Scientist	Jen Lauer
V&V Date (YYYY-MM-DD)	2012.06.27
V&V Edition	1
V&V Disposition and Status	OK
V&V Charge Time	28.543999893725

A.2 Comments

Roll angle preference met.