

V&V Reference Report

L2 ASCDS Version : 8.4.5

Observation 10523 - L2 Version 2
Chandra X-Ray Center

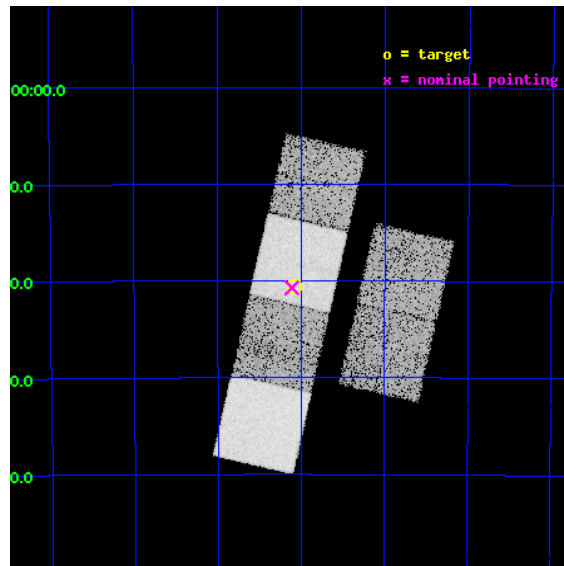
L2 Processing Date : Jun 10 2012

Contents

1	Front	2
2	OBI	3
2.1	OBI	3
2.1.1	Images	3
2.1.2	Bias	3
2.1.3	Parameters	4
2.1.4	Events	4
2.2	Compared Parameters	5
2.3	Aspect	6
2.4	Star Slots	9
2.4.1	Slot 3	9
2.4.2	Slot 4	10
2.4.3	Slot 5	11
2.4.4	Slot 6	12
2.4.5	Slot 7	13
2.5	FID Slots	14
2.5.1	Slot 0	14
2.5.2	Slot 1	15
2.5.3	Slot 2	16
A	Summary	17
A.1	Status	17
A.2	Comments	17

1 Front

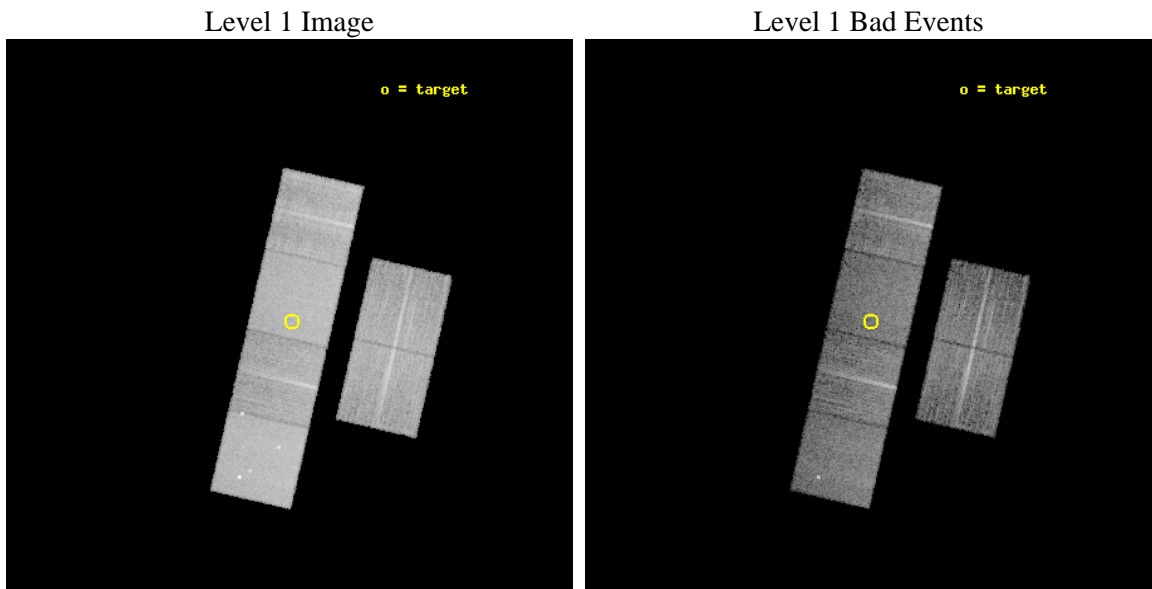
seq_num	900891	Sequence number
obs_id	10523	Observation id
title	ChIcAGO: Chandra Identification of ASCA Galactic Objects	Proposal
observer	Prof. Bryan Gaensler	Principal investigator
object	AX J154905-5420	Source name
dtcycle	0	
cycle	P	events from which exps? Prim/Second/Both
ra_targ	237.272083	Observer's specified target RA [deg]
dec_targ	-54.342	Observer's specified target Dec [deg]
ra_nom	237.27793463209	Nominal RA [deg]
dec_nom	-54.345368784507	Nominal Dec [deg]
roll_nom	282.91304417803	Nominal Roll [deg]
revision	2	Processing version of data
ontime	7692.7999714017	Sum of GTIs [s]
livetime	7595.3891061158	Livetime [s]
ontime2	7692.7999714017	Sum of GTIs [s]
ontime3	7689.5589910746	Sum of GTIs [s]
ontime5	7692.7999714017	Sum of GTIs [s]
ontime6	7692.7999714017	Sum of GTIs [s]
ontime7	7692.7999714017	Sum of GTIs [s]
ontime8	7692.7999714017	Sum of GTIs [s]
l2events	139779	Number of level 2 events



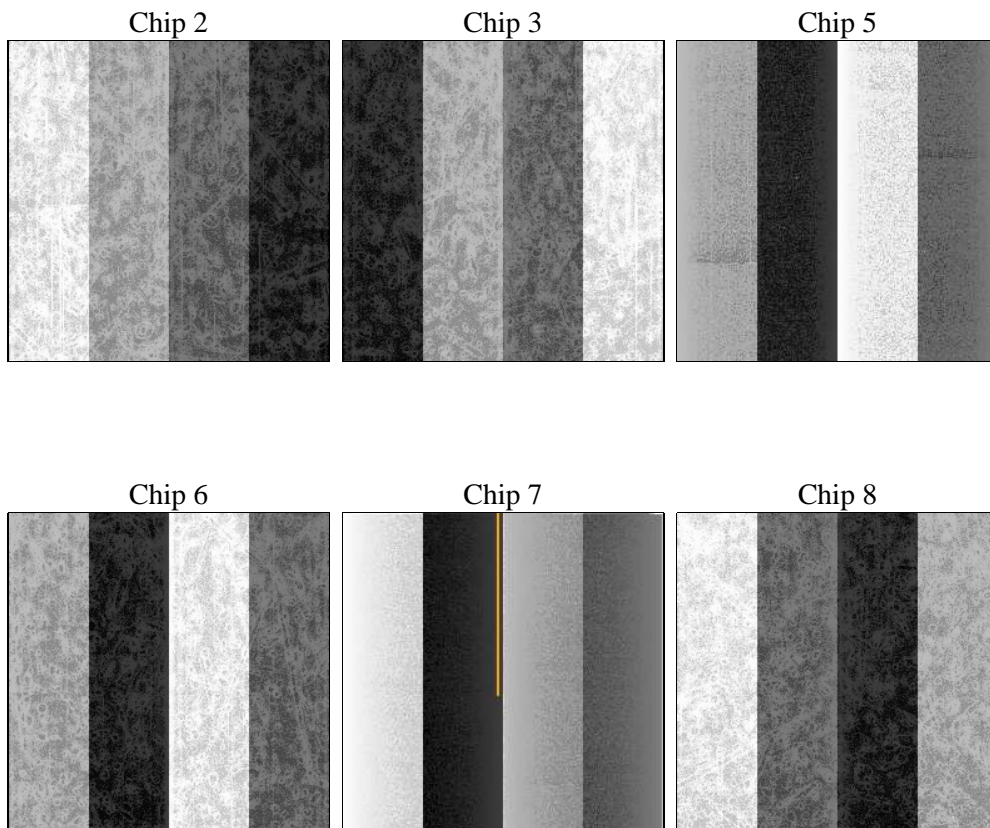
2 OBI

2.1 OBI

2.1.1 Images



2.1.2 Bias



2.1.3 Parameters

obi_num	1	Obi number	sched_exp_time	7564.098000	[s] Scheduled observation exposure time
ascdsver	8.4.5	Processing system revision	ontime	7692.7999714017	Sum of GTIs [s]
caldsver	4.4.10	 	ontime2	7692.7999714017	Sum of GTIs [s]
date	2012-06-10T11:39:59	Date and time of file creation	ontime3	7689.5589910746	Sum of GTIs [s]
revision	2	Processing version of data	ontime5	7692.7999714017	Sum of GTIs [s]
			ontime6	7692.7999714017	Sum of GTIs [s]
			ontime7	7692.7999714017	Sum of GTIs [s]
			ontime8	7692.7999714017	Sum of GTIs [s]
			l1events	637413	Number of level 1 events

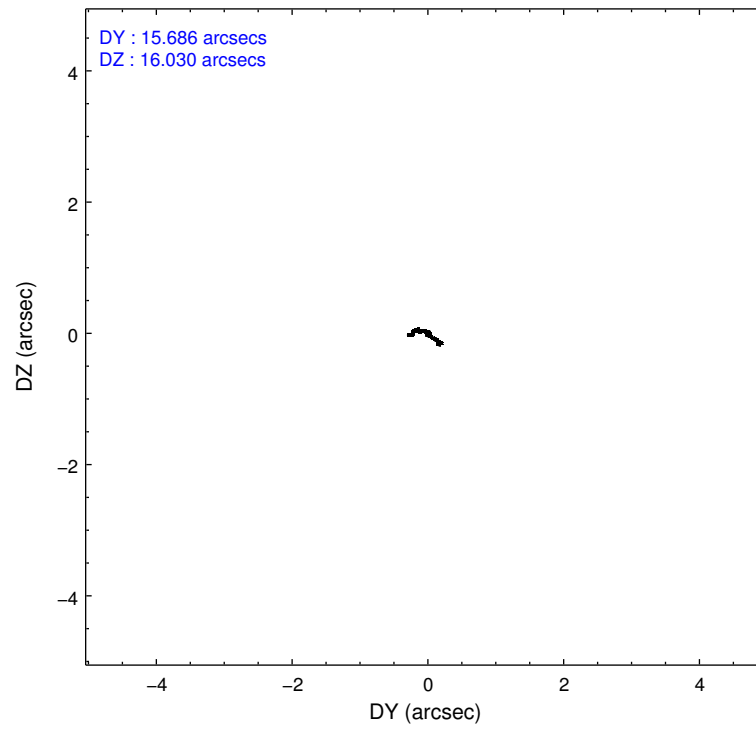
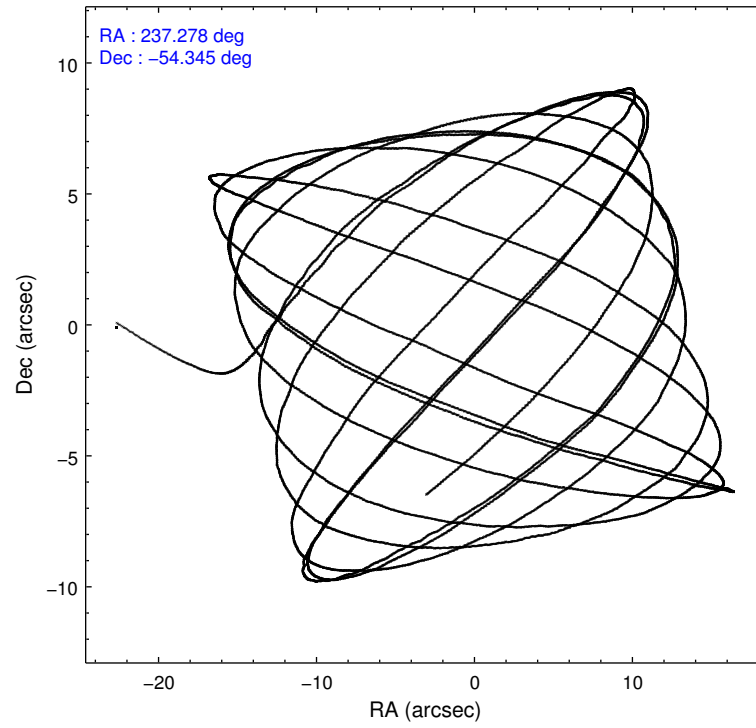
2.1.4 Events

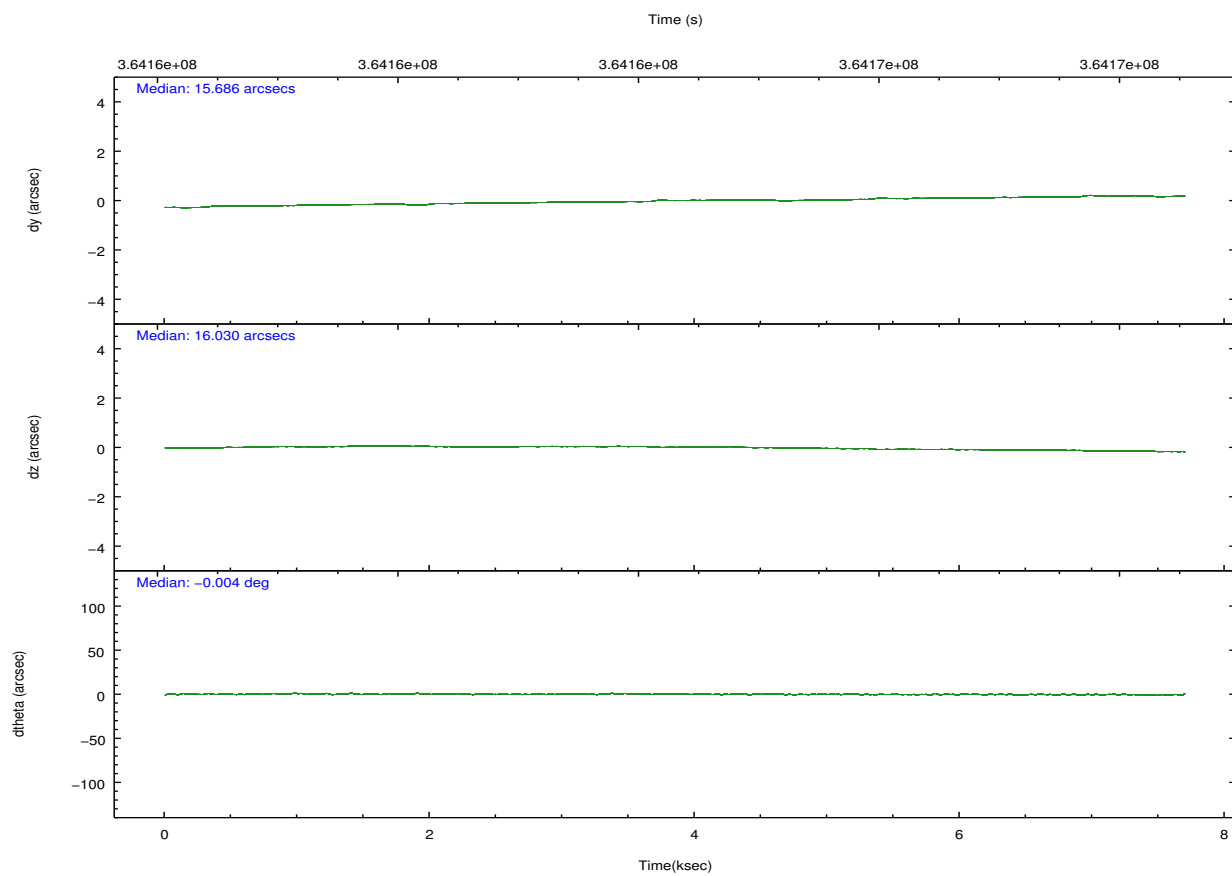
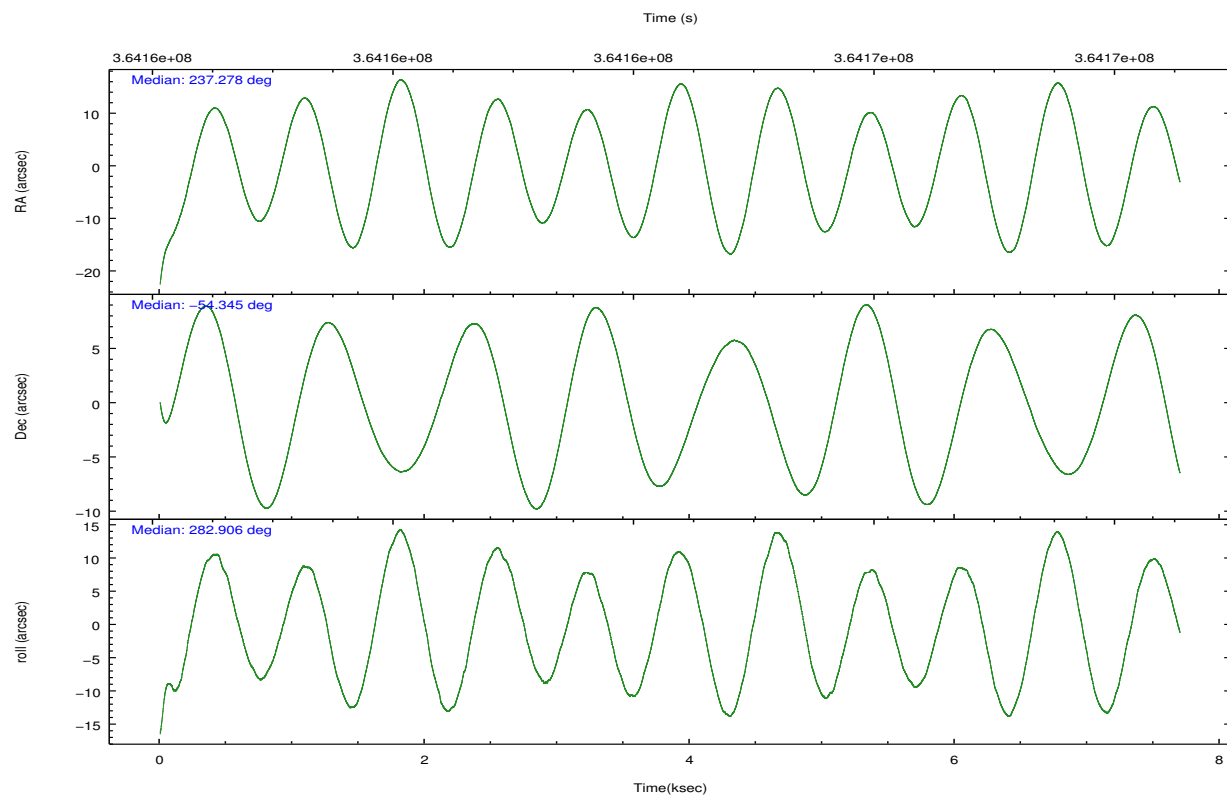
	ccd 2	ccd 3	ccd 5	ccd 6	ccd 7	ccd 8		ccd 2	ccd 3	ccd 5	ccd 6	ccd 7	ccd 8
level 1 events	90192	84151	138577	89196	123386	111911	grade 0 events	4567	4590	5722	4573	4356	8376
rejected events	80314	74228	79195	78760	74792	87219		5%	5%	4%	5%	3%	7%
rejected %	89%	88%	57%	88%	60%	77%	grade 1 events	84	63	483	47	142	75
								0%	0%	0%	0%	0%	0%
							grade 2 events	2335	2204	19986	2420	10886	6054
								2%	2%	14%	2%	8%	5%
							grade 3 events	925	1018	2370	1023	4328	2734
								1%	1%	1%	1%	3%	2%
							grade 4 events	983	973	2140	976	4293	2437
								1%	1%	1%	1%	3%	2%
							grade 5 events	3604	4100	10066	4301	11359	5581
								3%	4%	7%	4%	9%	4%
							grade 6 events	1821	1855	33626	2209	28142	6770
								2%	2%	24%	2%	22%	6%
							grade 7 events	75873	69348	64184	73647	59880	79884
								84%	82%	46%	82%	48%	71%

2.2 Compared Parameters

Parameter	Planned	Actual	Parameter	Planned	Actual
Instrument	ACIS	ACIS	Obspar format version number	7	7
Detector	ACIS-235678	ACIS-235678	Obspar file type	PREDICTED	ACTUAL
Grating	NONE	NONE	Obspar update status	NONE	UPDATED
Data mode	FAINT	FAINT	CCD I0 on	N	N
Observation mode	POINTING	POINTING	CCD I1 on	N	N
[deg] Pointing RA	237.245528	237.2779346320931	CCD I2 on	O2	Y
[deg] Pointing Dec	-54.325684	-54.34536878450744	CCD I3 on	O3	Y
[deg] Pointing Roll	282.730094	282.9130441780262	CCD S0 on	N	N
[mm] SIM focus pos	-0.684267	-0.6828225247311905	CCD S1 on	O1	Y
[mm] SIM defocus	0	0.001444936568705701	CCD S2 on	O5	Y
[mm] SIM translation stage pos	-190.132523	-190.1425803651734	CCD S3 on	Y	Y
[mm] SIM translation stage offset	0	0.01005778216563158	CCD S4 on	O4	Y
[s] Observation start time (MET)	364160589.184000	364159259.9435	CCD S5 on	N	N
Observation start date	2009-07-16T19:42:03	2009-07-16T19:20:59	Number of optional ACIS chips dropped	0	0
[s] Observation end time (MET)	364168153.184000	364168373.21895	On-chip summing requested	N	N
Observation end date	2009-07-16T21:48:07	2009-07-16T21:52:53	Subarray requested	NONE	NONE
Read mode	TIMED	TIMED	Alternating exposures requested	N	N
			[s] Primary exposure time	0.000000	3.2

2.3 Aspect



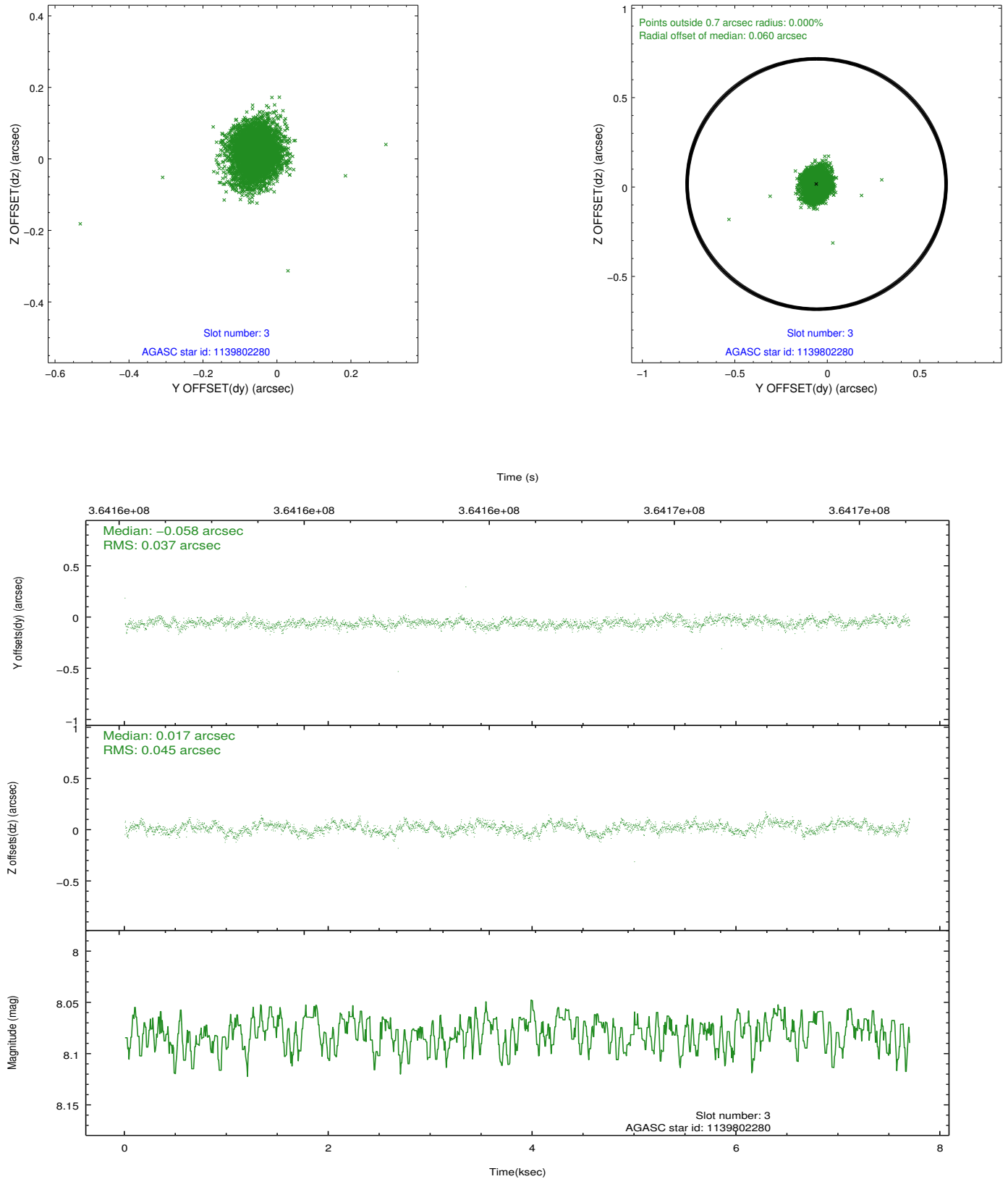


Slot Statistics

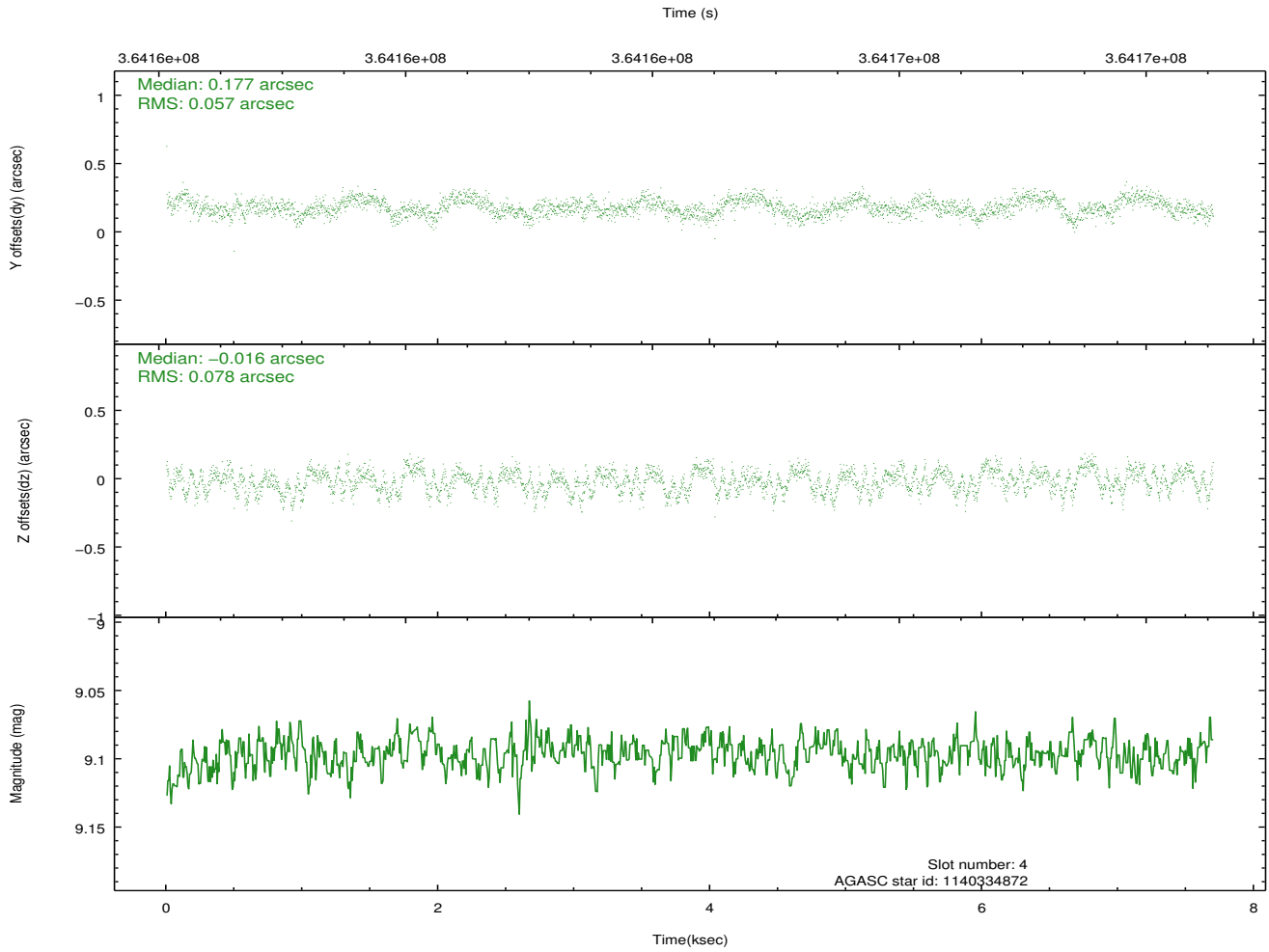
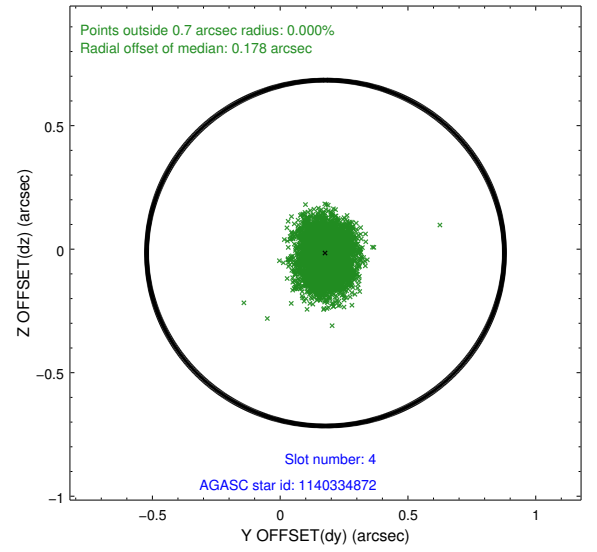
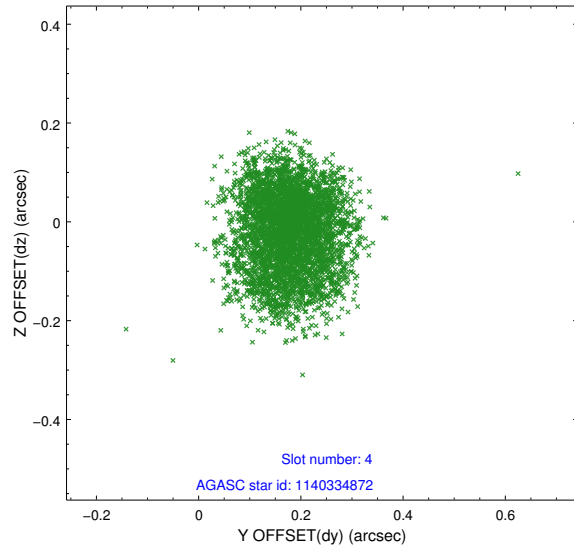
slot	status	id	mag	n_pts	med_dy	med_dz	dr1	dr2	ra	dec	mean_y	mean_z
0	FID	ACIS-S-2	6.89	1878	-0.093	-0.021	0.009	0.017	0.000000	0.000000	-768.74	-1737.38
1	FID	ACIS-S-4	6.98	1878	0.191	0.050	0.011	0.020	0.000000	0.000000	2144.48	170.41
2	FID	ACIS-S-5	7.00	1878	-0.129	-0.020	0.011	0.022	0.000000	0.000000	-1820.68	164.84
3	GUIDE	1139802280	8.08	3754	-0.058	0.017	0.061	0.097	236.525595	-54.011505	-1430.47	-1238.20
4	GUIDE	1140334872	9.10	3753	0.177	-0.016	0.105	0.159	236.234092	-54.377223	-270.87	-2113.09
5	GUIDE	1140462520	8.14	3756	0.084	-0.111	0.073	0.117	237.718666	-54.642458	1333.31	709.01
6	GUIDE	1139945912	9.11	3756	-0.049	-0.017	0.111	0.181	238.361289	-54.201826	101.53	2386.13
7	GUIDE	1140335032	7.18	3754	-0.158	0.131	0.051	0.086	236.261752	-54.867292	1467.47	-2419.73

2.4 Star Slots

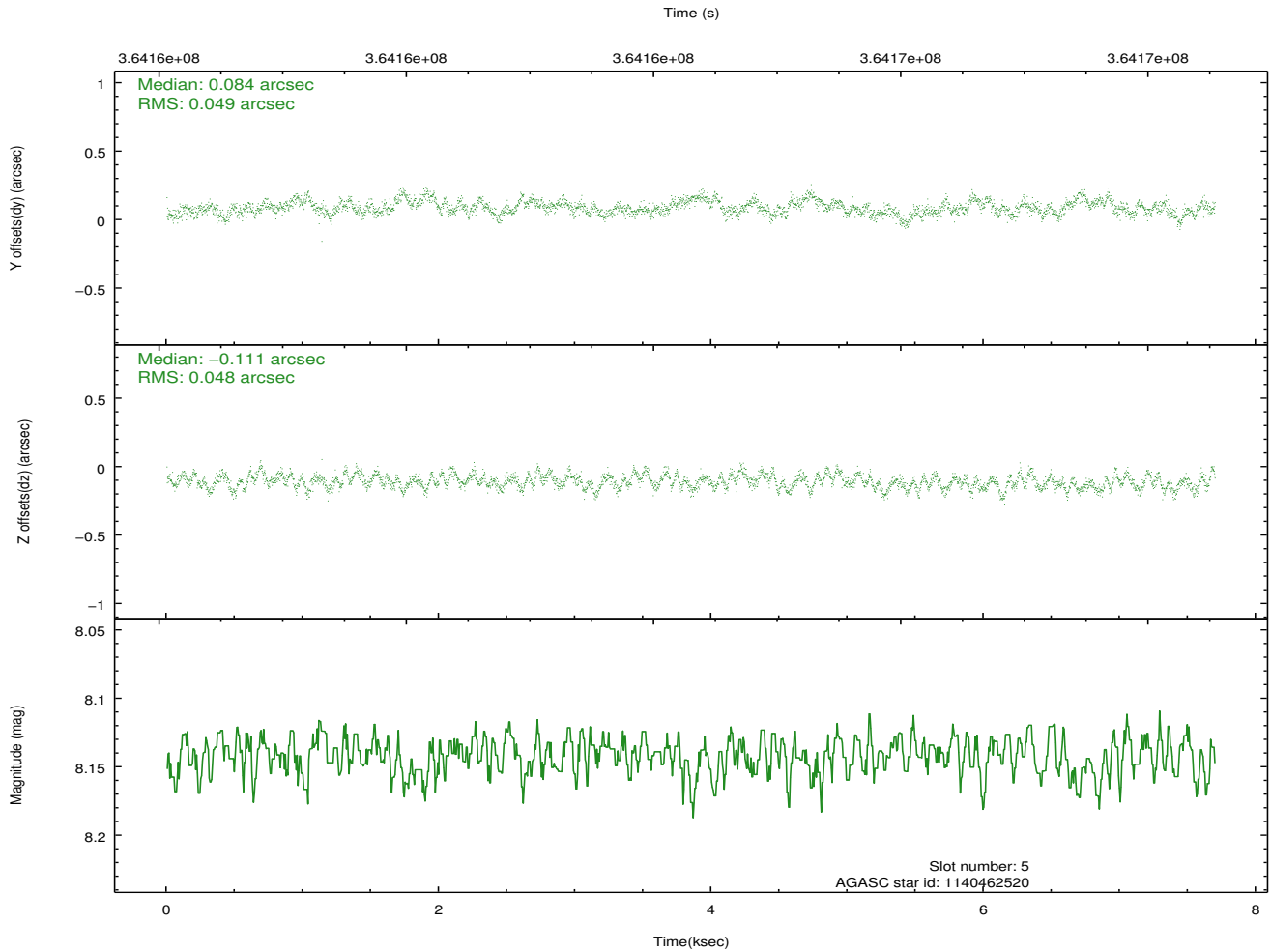
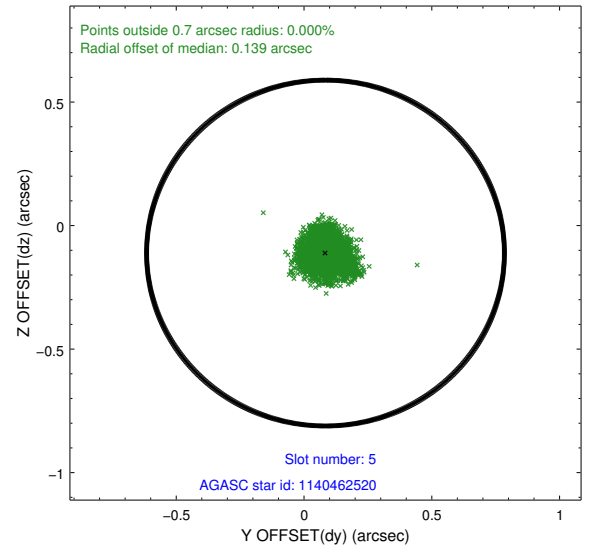
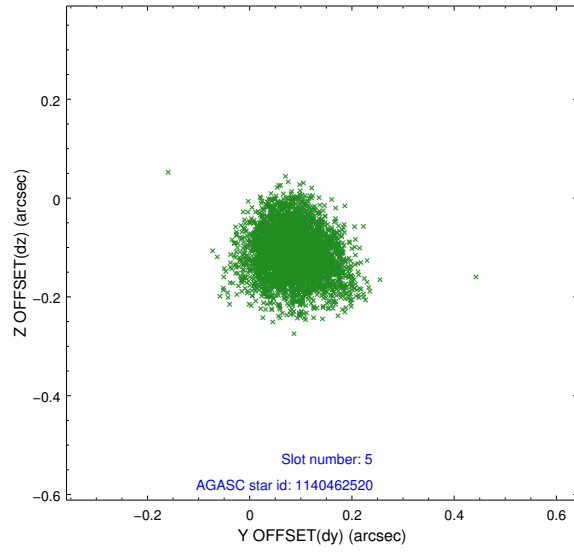
2.4.1 Slot 3



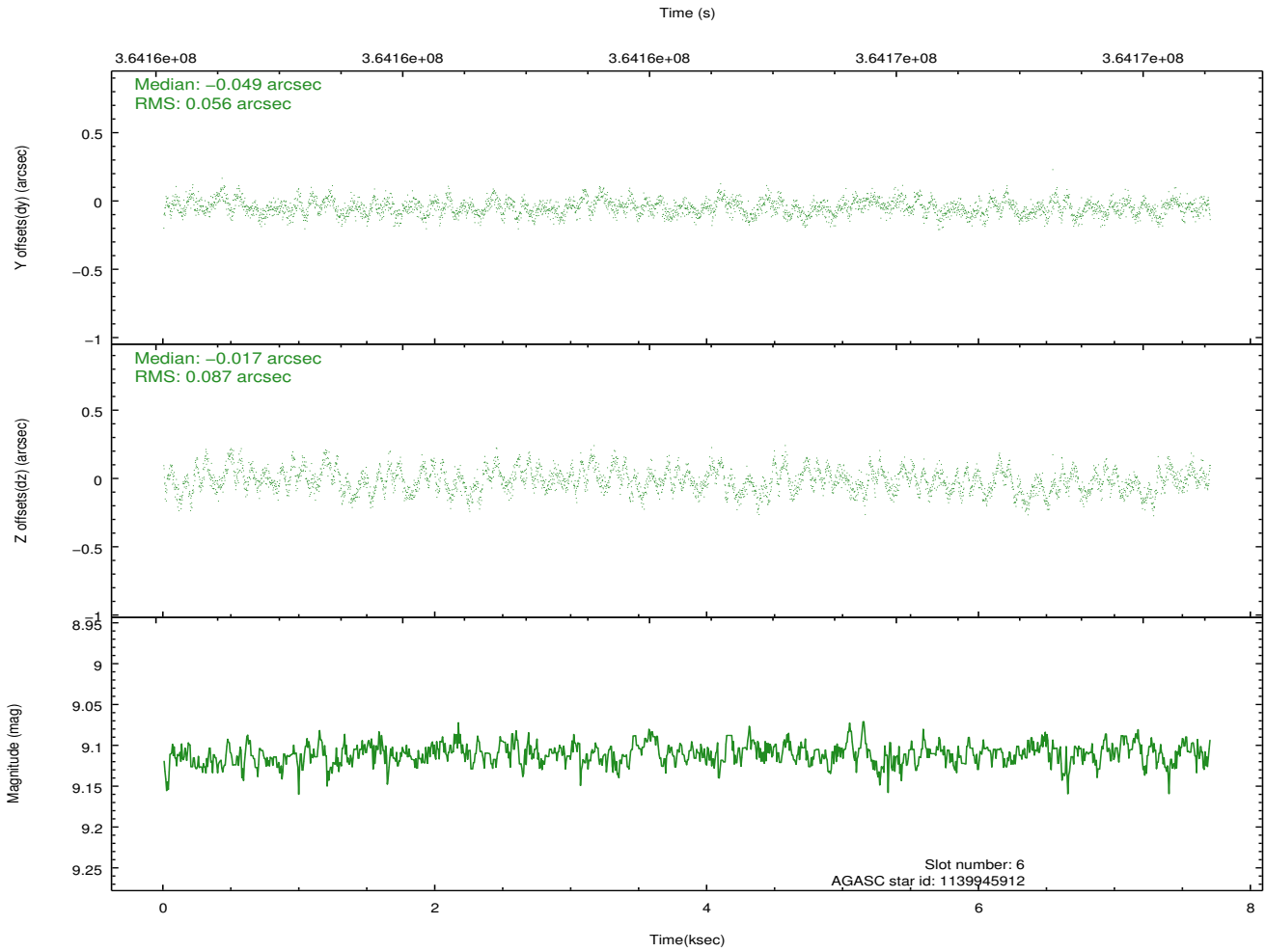
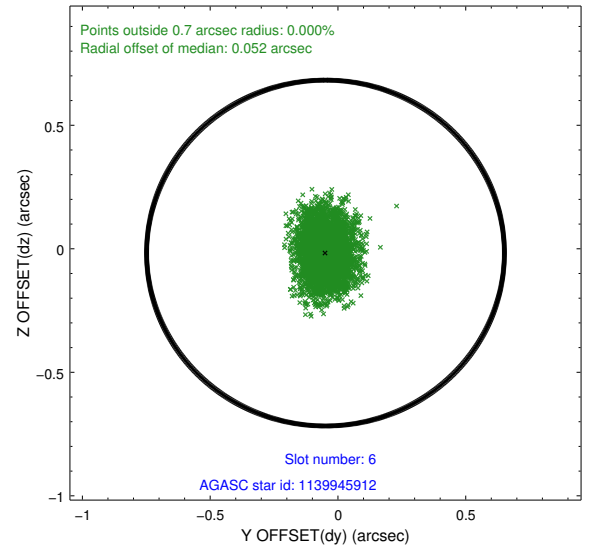
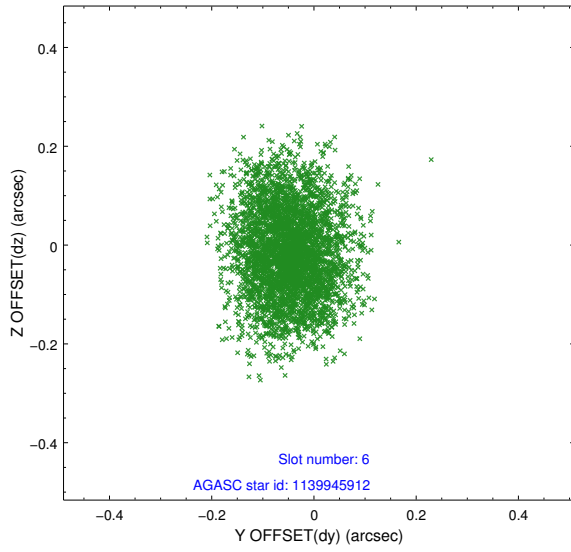
2.4.2 Slot 4



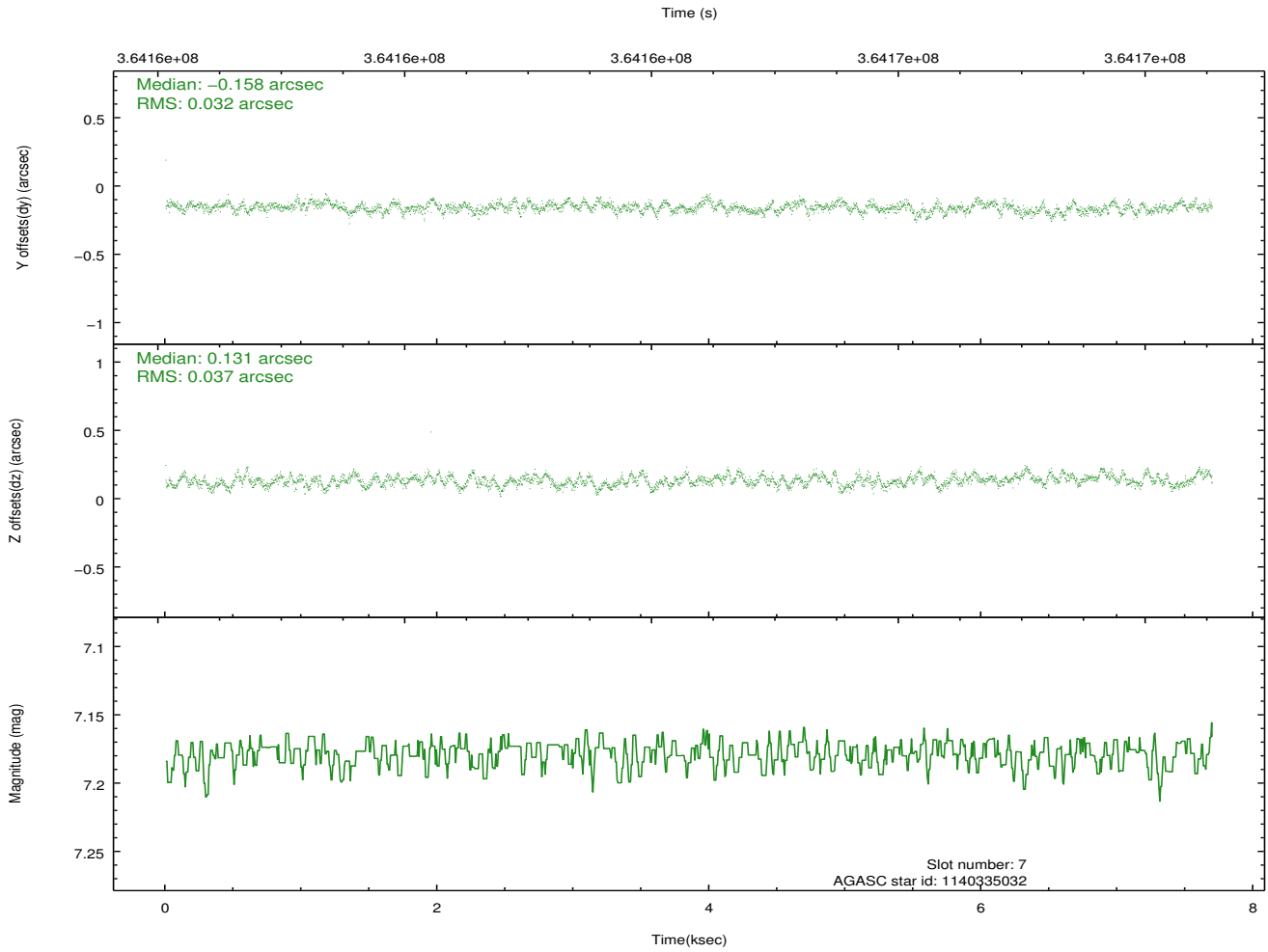
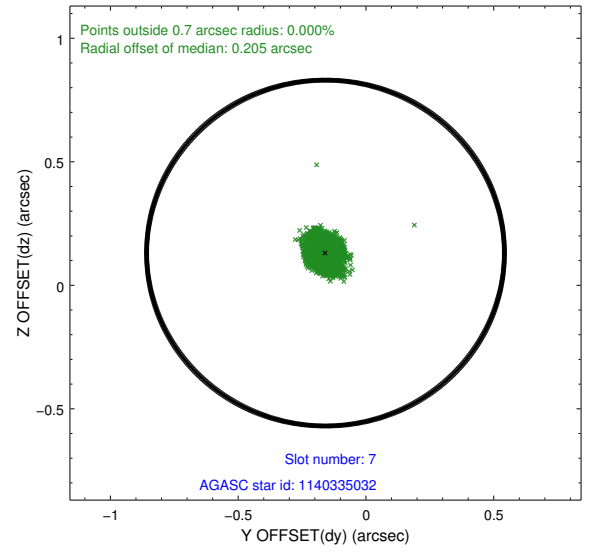
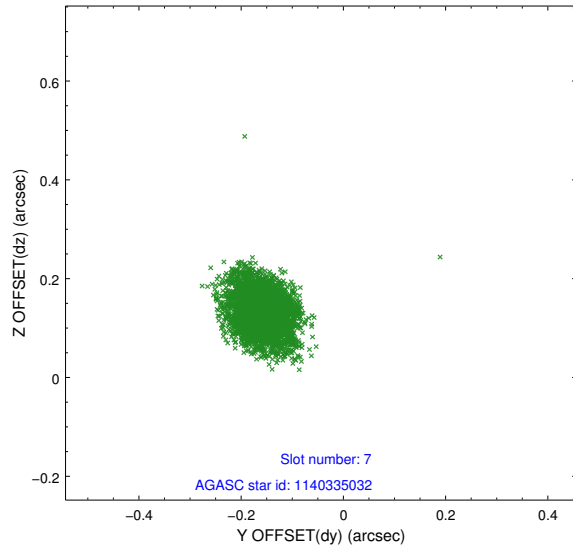
2.4.3 Slot 5



2.4.4 Slot 6

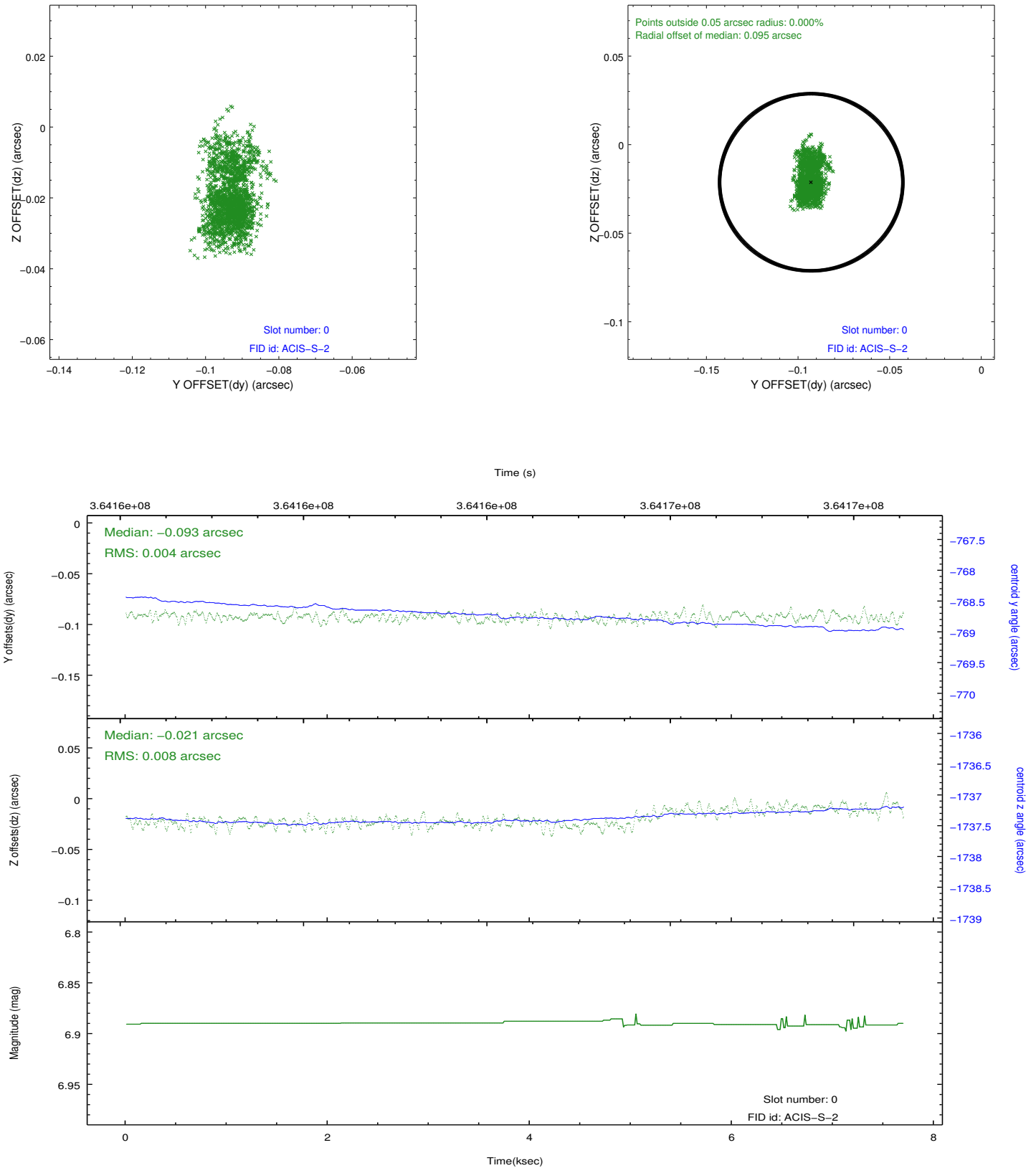


2.4.5 Slot 7

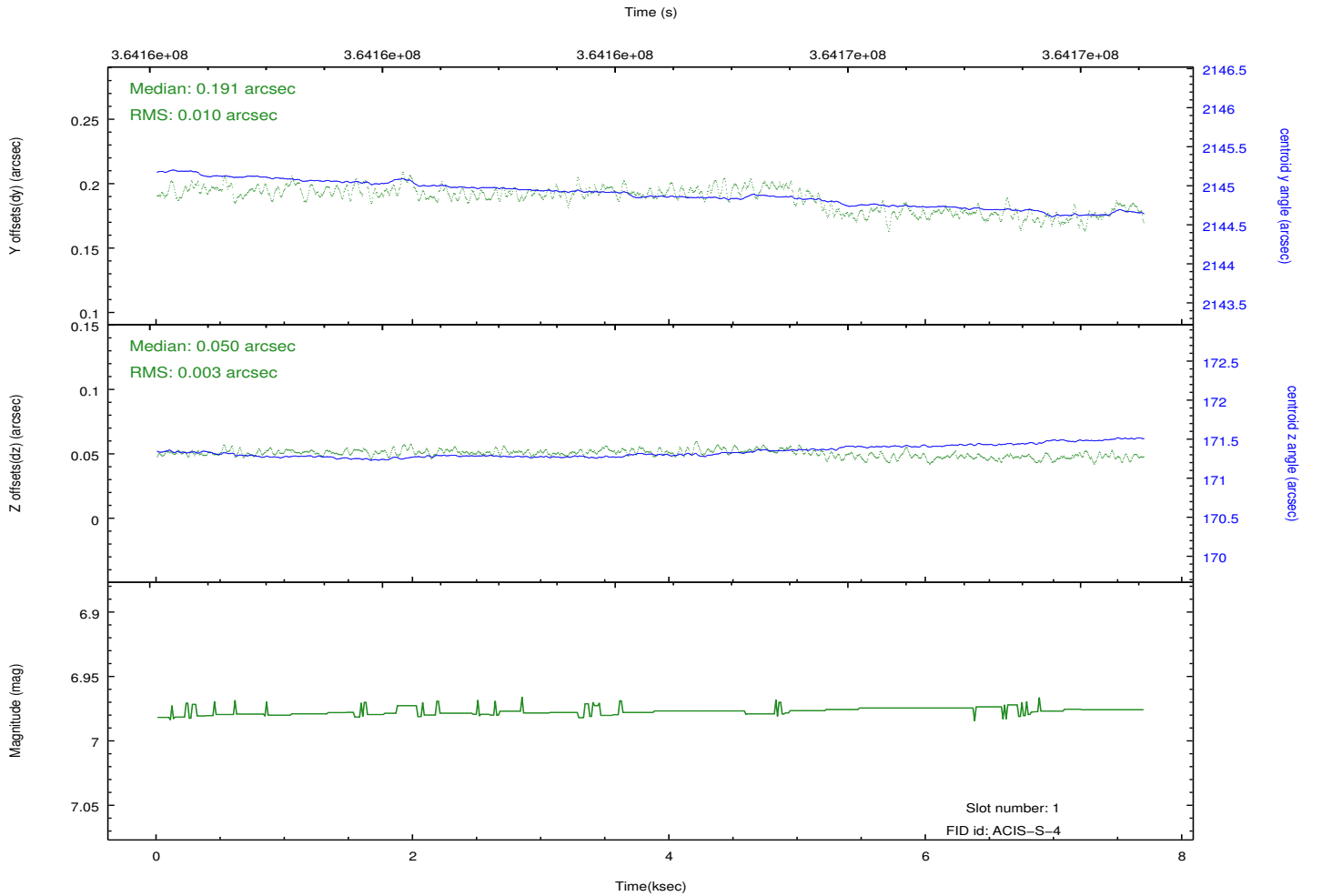
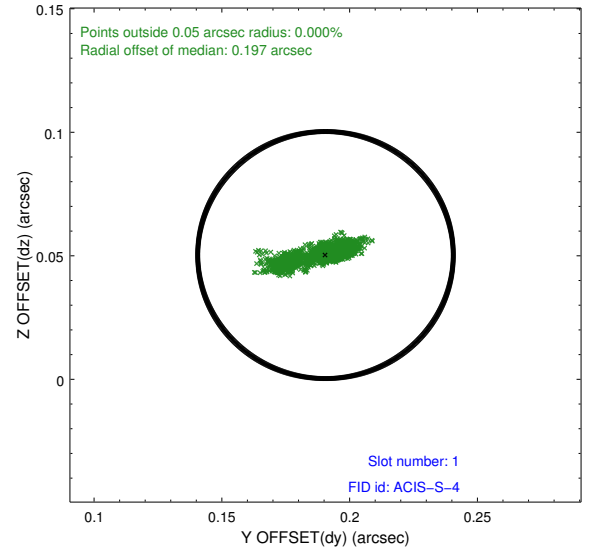
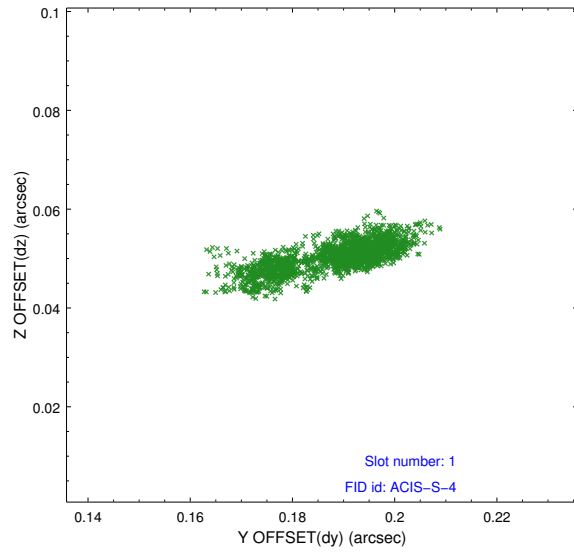


2.5 FID Slots

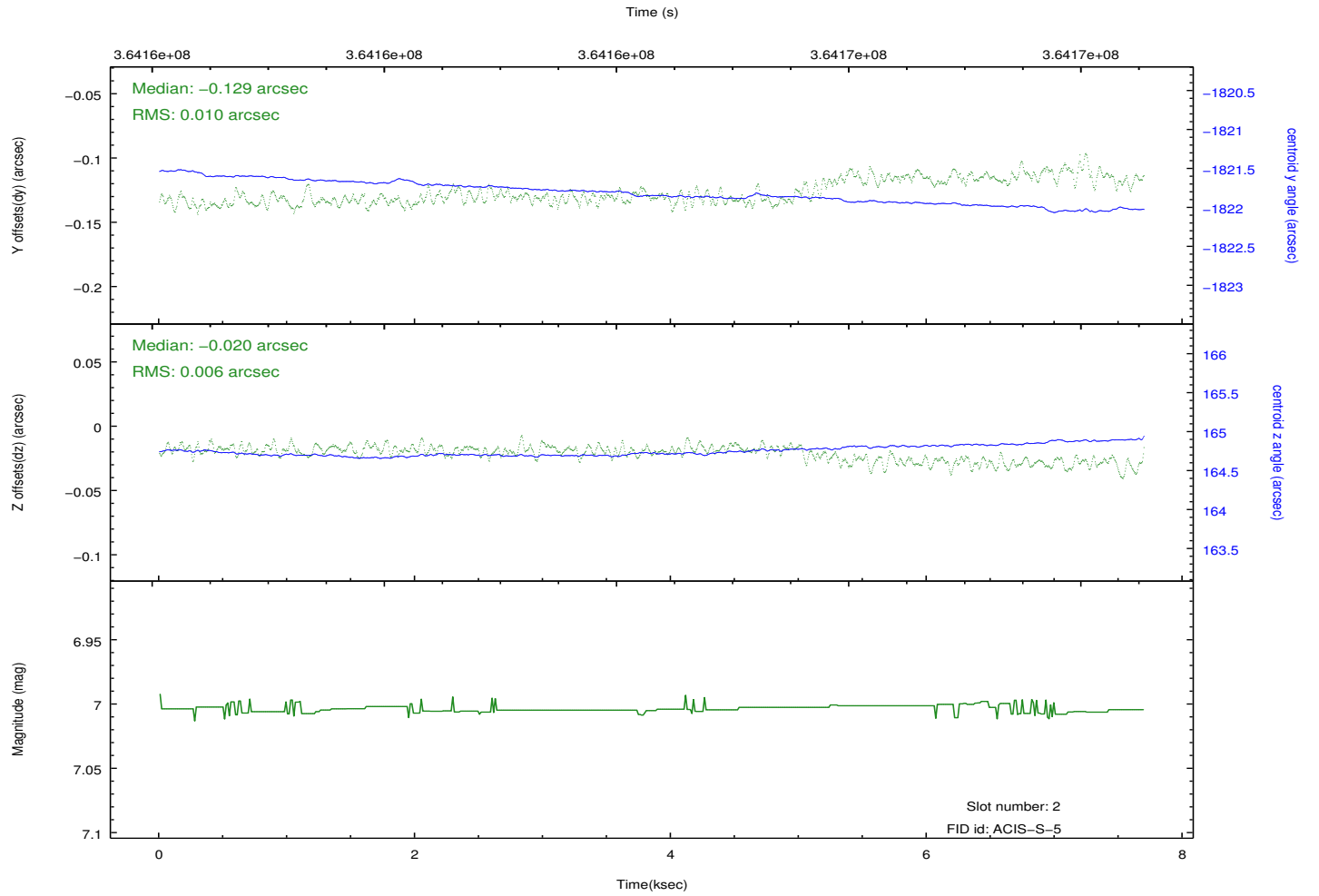
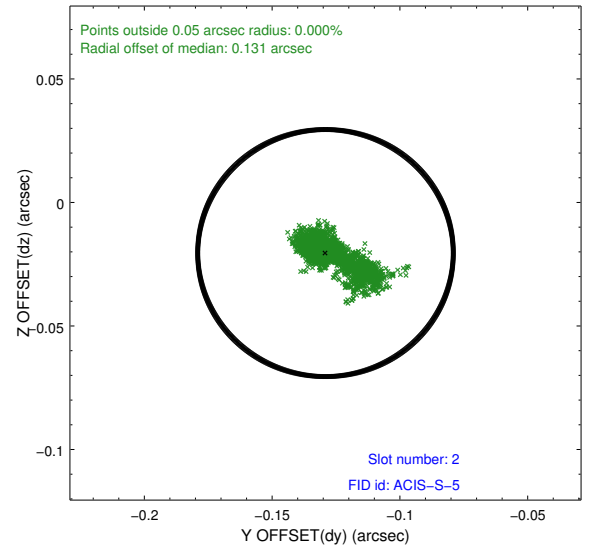
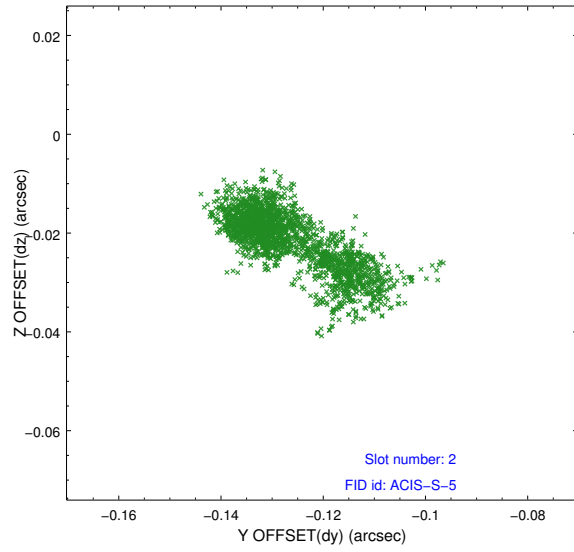
2.5.1 Slot 0



2.5.2 Slot 1



2.5.3 Slot 2



A Summary

A.1 Status

V&V Scientist	Jen Lauer
V&V Date (YYYY-MM-DD)	2012.06.13
V&V Edition	1
V&V Disposition and Status	OK
V&V Charge Time	7.6927999714017

A.2 Comments