

V&V Reference Report

L2 ASCDS Version : 8.4.5

Observation 10804 - L2 Version 2
Chandra X-Ray Center

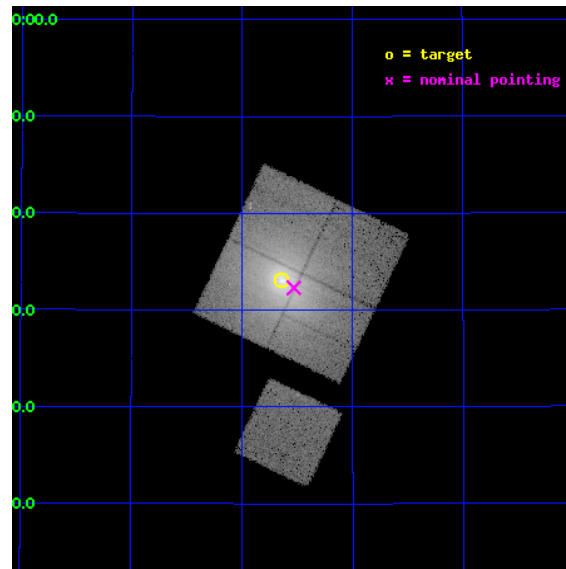
L2 Processing Date : Jun 9 2012

Contents

1	Front	2
2	OBI	3
2.1	OBI	3
2.1.1	Images	3
2.1.2	Bias	3
2.1.3	Parameters	4
2.1.4	Events	4
2.2	Compared Parameters	5
2.3	Aspect	6
2.4	Star Slots	9
2.4.1	Slot 3	9
2.4.2	Slot 4	10
2.4.3	Slot 5	11
2.4.4	Slot 6	12
2.4.5	Slot 7	13
2.5	FID Slots	14
2.5.1	Slot 0	14
2.5.2	Slot 1	15
2.5.3	Slot 2	16
A	Summary	17
A.1	Status	17
A.2	Comments	17

1 Front

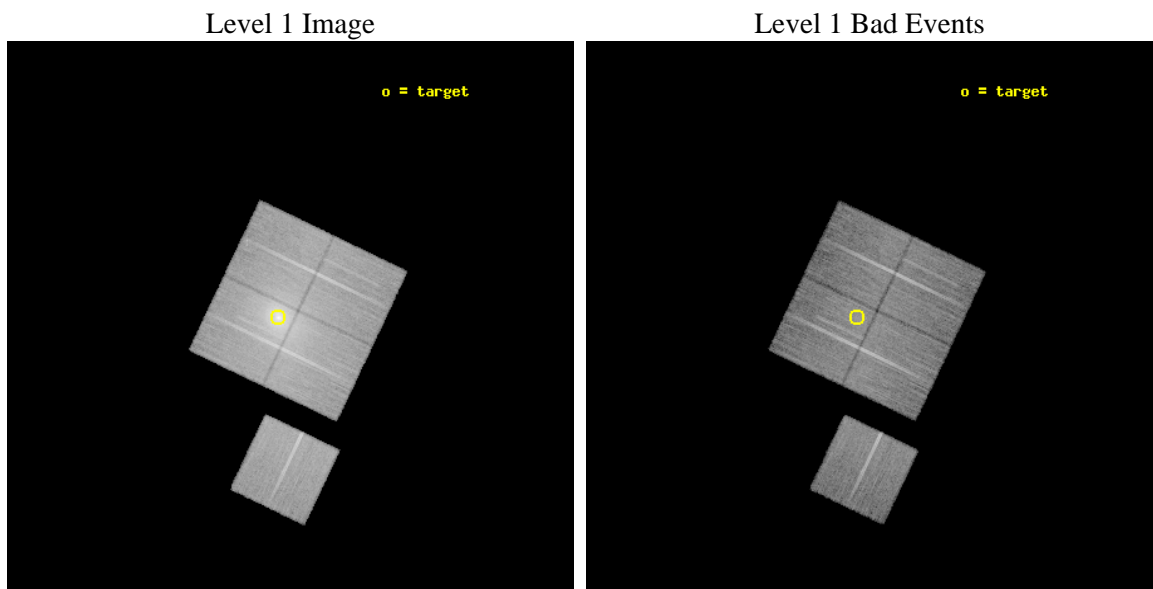
seq_num	800849	Sequence number
obs_id	10804	Observation id
title	Abell 2199: AGN outbursts and merger	Proposal title
observer	Dr. Stephen Murray	Principal investigator
object	Abell 2199	Source name
dtcycle	0	
cycle	P	events from which exps? Prim/Second/Both
ra_targ	247.16	Observer's specified target RA [deg]
dec_targ	39.551111	Observer's specified target Dec [deg]
ra_nom	247.13279869677	Nominal RA [deg]
dec_nom	39.538470909388	Nominal Dec [deg]
roll_nom	205.56063110376	Nominal Roll [deg]
revision	2	Processing version of data
ontime	19037.059176028	Sum of GTIs [s]
livetime	18788.325983014	Livetime [s]
ontime0	19040.200146437	Sum of GTIs [s]
ontime1	19030.777285278	Sum of GTIs [s]
ontime2	19033.918205798	Sum of GTIs [s]
ontime3	19037.059176028	Sum of GTIs [s]
ontime6	19040.200146437	Sum of GTIs [s]
l2events	272161	Number of level 2 events



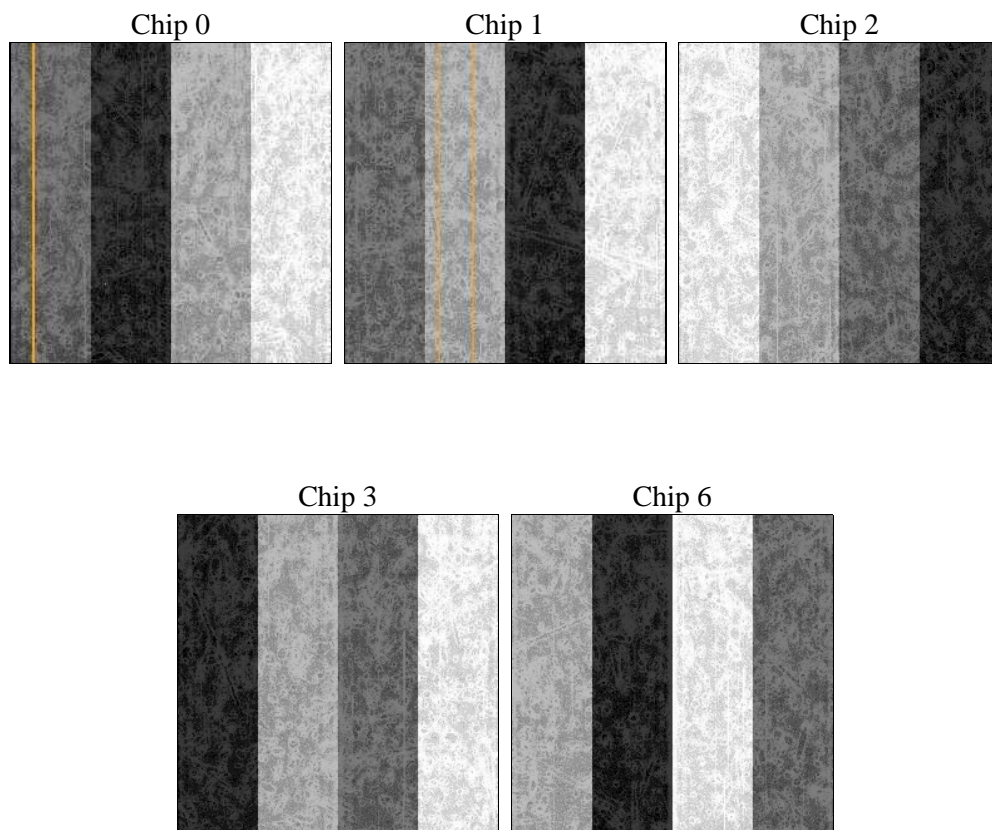
2 OBI

2.1 OBI

2.1.1 Images



2.1.2 Bias



2.1.3 Parameters

obi_num	1	Obi number	sched_exp_time	19000.000000	[s] Scheduled observation exposure time
ascdsver	8.4.5	Processing system revision	ontime	19037.059176028	Sum of GTIs [s]
caldsver	4.4.10	 	ontime0	19040.200146437	Sum of GTIs [s]
date	2012-06-09T08:20:39	Date and time of file creation	ontime1	19030.777285278	Sum of GTIs [s]
revision	2	Processing version of data	ontime2	19033.918205798	Sum of GTIs [s]
			ontime3	19037.059176028	Sum of GTIs [s]
			ontime6	19040.200146437	Sum of GTIs [s]
			l1events	1052380	Number of level 1 events

2.1.4 Events

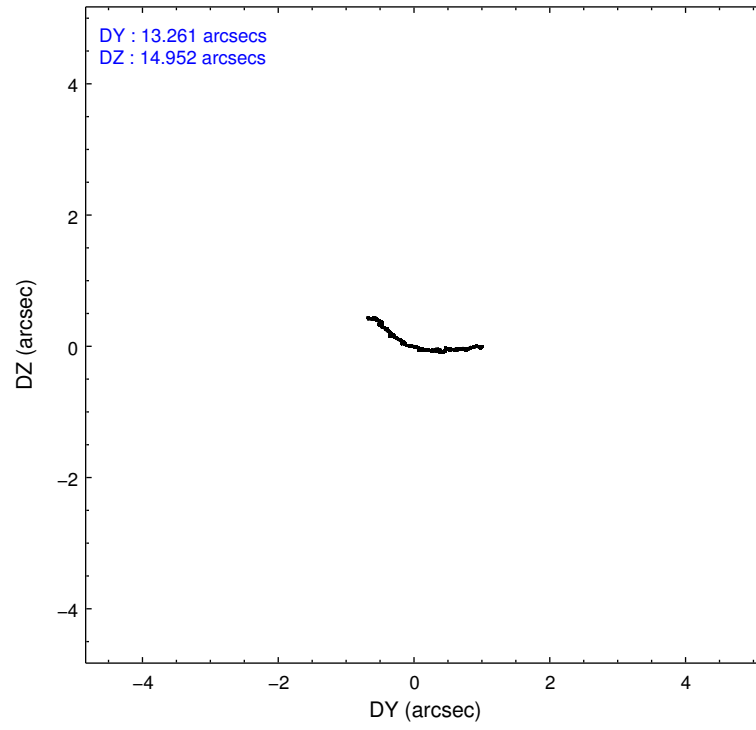
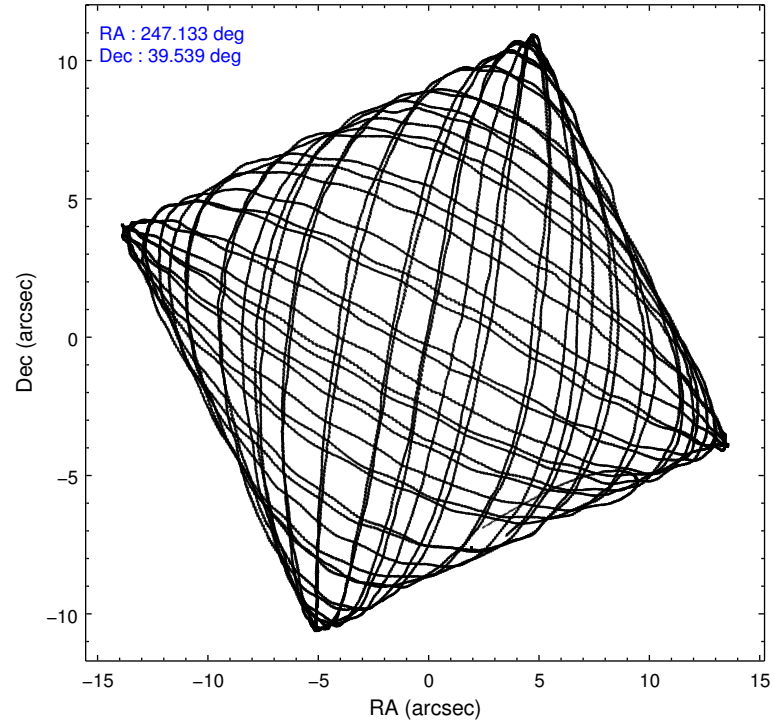
	ccd 0	ccd 1	ccd 2	ccd 3	ccd 6
level 1 events	174325	190853	226404	289424	171374
rejected events	143230	139434	166999	155473	151646
rejected %	82%	73%	73%	53%	88%

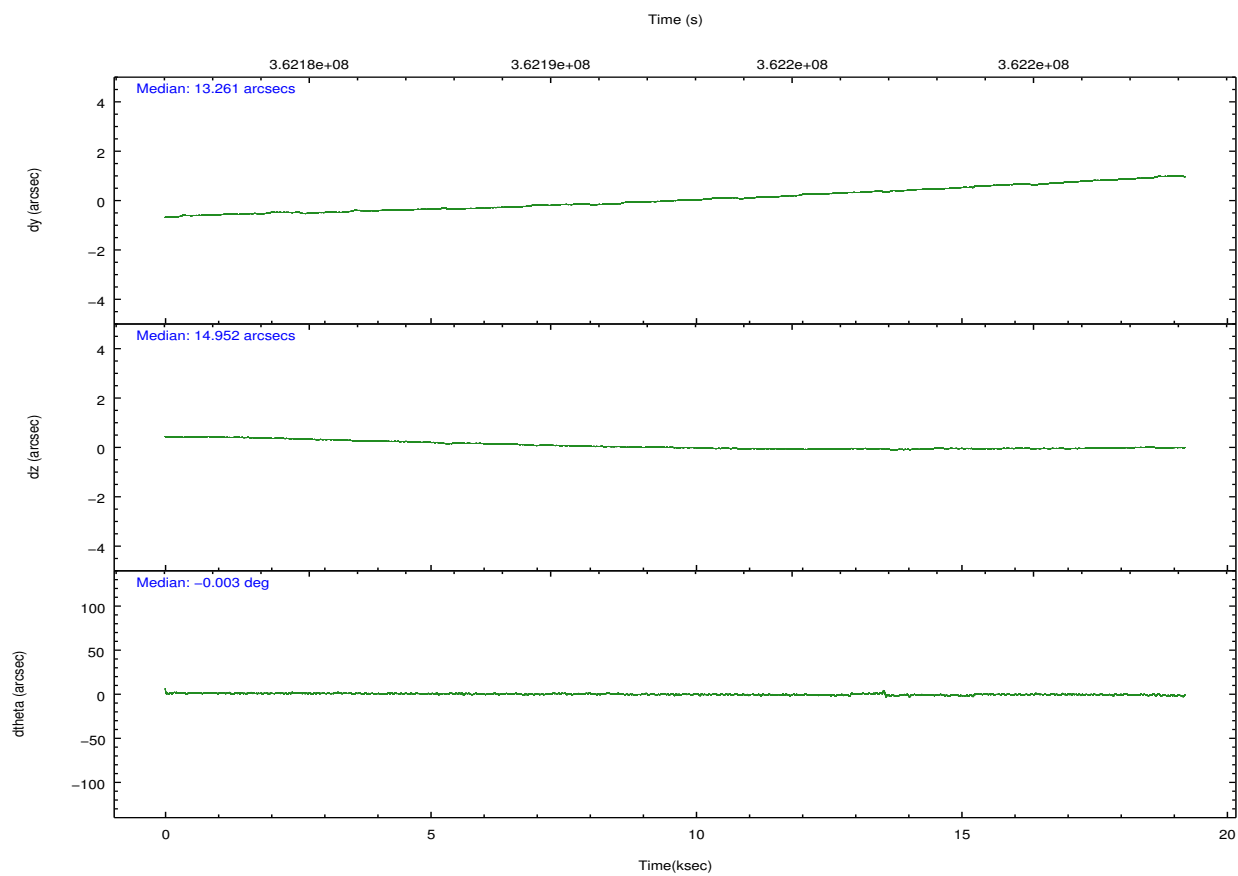
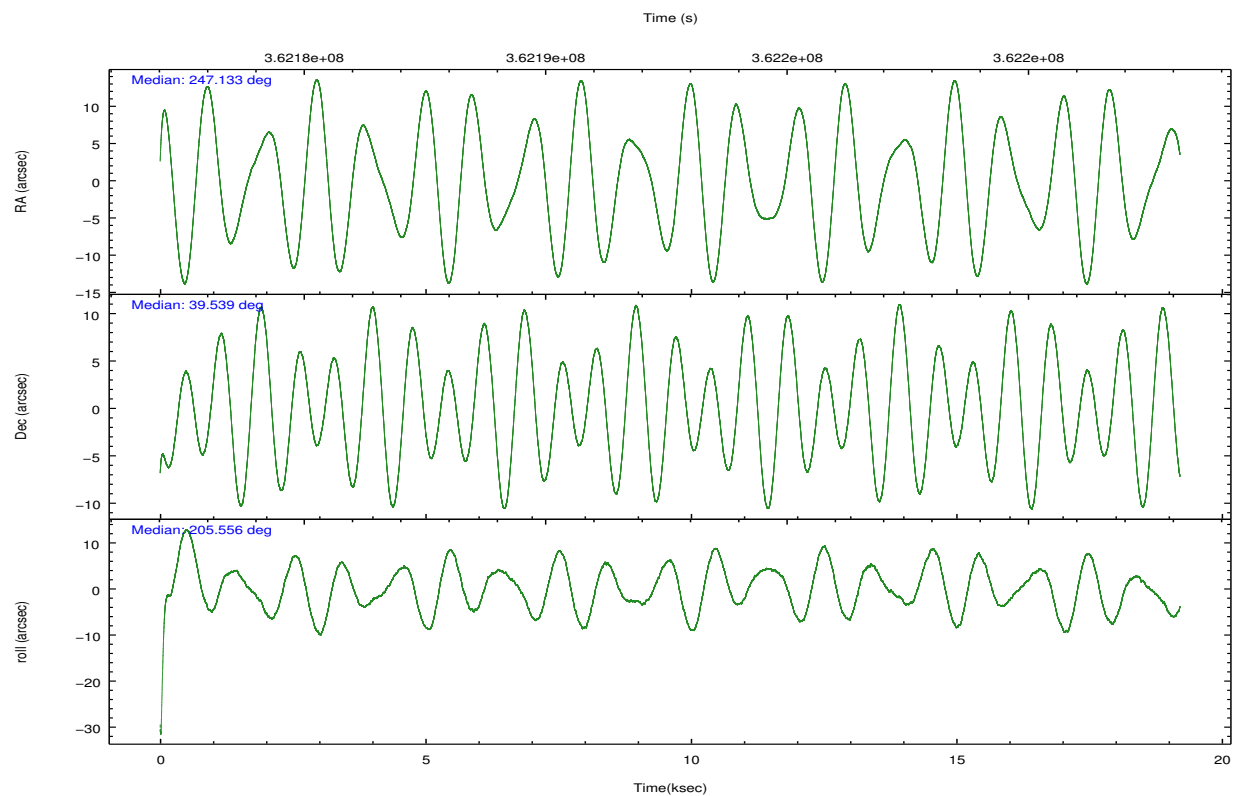
	ccd 0	ccd 1	ccd 2	ccd 3	ccd 6
grade 0 events	17419	33047	41363	103169	8032
	9%	17%	18%	35%	4%
grade 1 events	182	249	353	836	98
	0%	0%	0%	0%	0%
grade 2 events	5536	7824	8153	14831	4113
	3%	4%	3%	5%	2%
grade 3 events	2342	2949	2870	5090	1872
	1%	1%	1%	1%	1%
grade 4 events	2227	2976	3007	5107	1899
	1%	1%	1%	1%	1%
grade 5 events	6025	6747	5798	7508	6663
	3%	3%	2%	2%	3%
grade 6 events	3580	4643	4031	5790	3817
	2%	2%	1%	2%	2%
grade 7 events	137014	132418	160829	147093	144880
	78%	69%	71%	50%	84%

2.2 Compared Parameters

Parameter	Planned	Actual	Parameter	Planned	Actual
Instrument	ACIS	ACIS	Obspar format version number	7	7
Detector	ACIS-01236	ACIS-01236	Obspar file type	PREDICTED	ACTUAL
Grating	NONE	NONE	Obspar update status	NONE	UPDATED
Data mode	VFAINT	VFAINT	CCD I0 on	Y	Y
Observation mode	POINTING	POINTING	CCD I1 on	Y	Y
[deg] Pointing RA	247.152836	247.1327986967728	CCD I2 on	Y	Y
[deg] Pointing Dec	39.561221	39.53847090938831	CCD I3 on	Y	Y
[deg] Pointing Roll	205.339200	205.5606311037645	CCD S0 on	N	N
[mm] SIM focus pos	-0.782348	-0.7809083437167272	CCD S1 on	N	N
[mm] SIM defocus	0	0.001439871863259334	CCD S2 on	O1	Y
[mm] SIM translation stage pos	-230.692463	-230.6909432334316	CCD S3 on	N	N
[mm] SIM translation stage offset	-2.9	-2.901509769498119	CCD S4 on	N	N
[s] Observation start time (MET)	362183176.184000	362182225.49461	CCD S5 on	N	N
Observation start date	2009-06-23T22:25:10	2009-06-23T22:10:25	Number of optional ACIS chips dropped	0	0
[s] Observation end time (MET)	362202176.184000	362202893.59564	On-chip summing requested	N	N
Observation end date	2009-06-24T03:41:50	2009-06-24T03:54:53	Subarray requested	NONE	NONE
Read mode	TIMED	TIMED	Alternating exposures requested	N	N
			[s] Primary exposure time	0.000000	3.1

2.3 Aspect



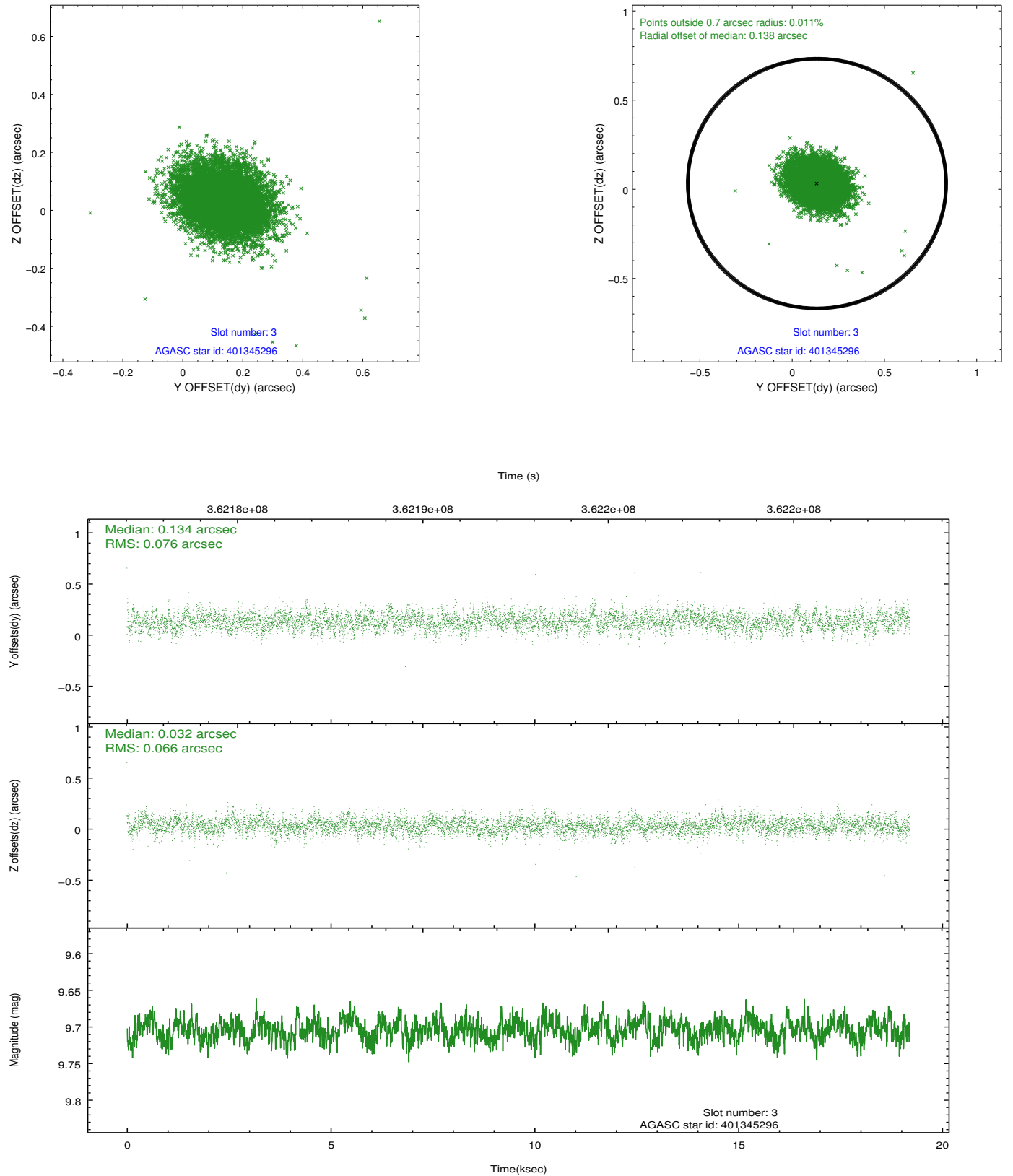


Slot Statistics

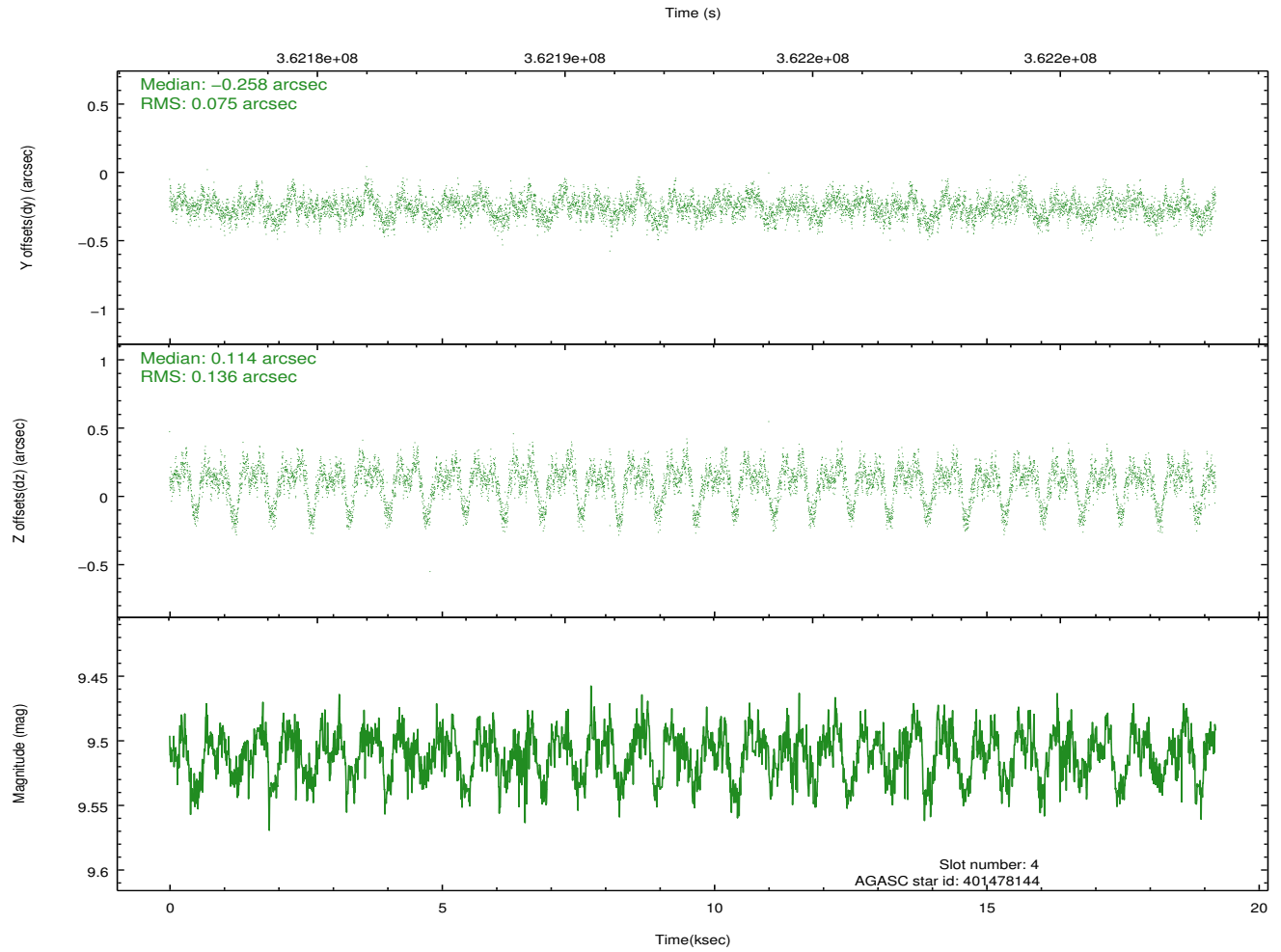
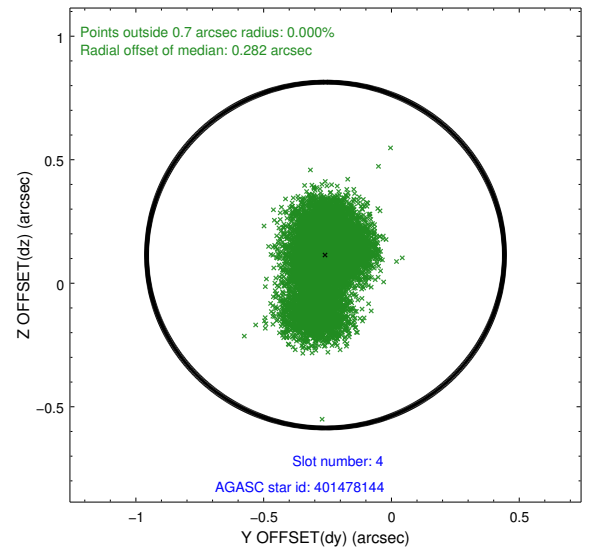
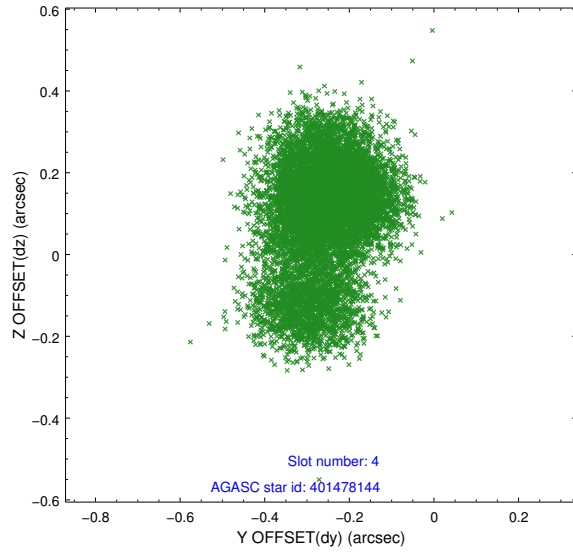
slot	status	id	mag	n_pts	med_dy	med_dz	dr1	dr2	ra	dec	mean_y	mean_z
0	FID	ACIS-I-1	7.01	4685	-0.003	-0.035	0.017	0.029	0.000000	0.000000	926.15	-898.15
1	FID	ACIS-I-4	6.92	4685	0.124	0.051	0.014	0.034	0.000000	0.000000	2146.21	1002.02
2	FID	ACIS-I-5	6.99	4685	-0.218	0.057	0.012	0.021	0.000000	0.000000	-1821.86	999.65
3	GUIDE	401345296	9.70	9360	0.134	0.032	0.106	0.172	246.414533	39.580805	1818.21	-947.78
4	GUIDE	401478144	9.51	9360	-0.258	0.114	0.158	0.290	247.248621	39.077700	503.17	1687.76
5	GUIDE	401480552	8.32	9358	0.208	-0.180	0.078	0.118	246.755844	38.843167	2111.88	1858.00
6	GUIDE	401481984	8.71	9367	-0.000	-0.007	0.102	0.157	247.136950	39.776672	-291.48	-719.70
7	GUIDE	401476712	9.64	9359	-0.080	0.060	0.150	0.236	247.950954	39.205436	-1468.21	2101.54

2.4 Star Slots

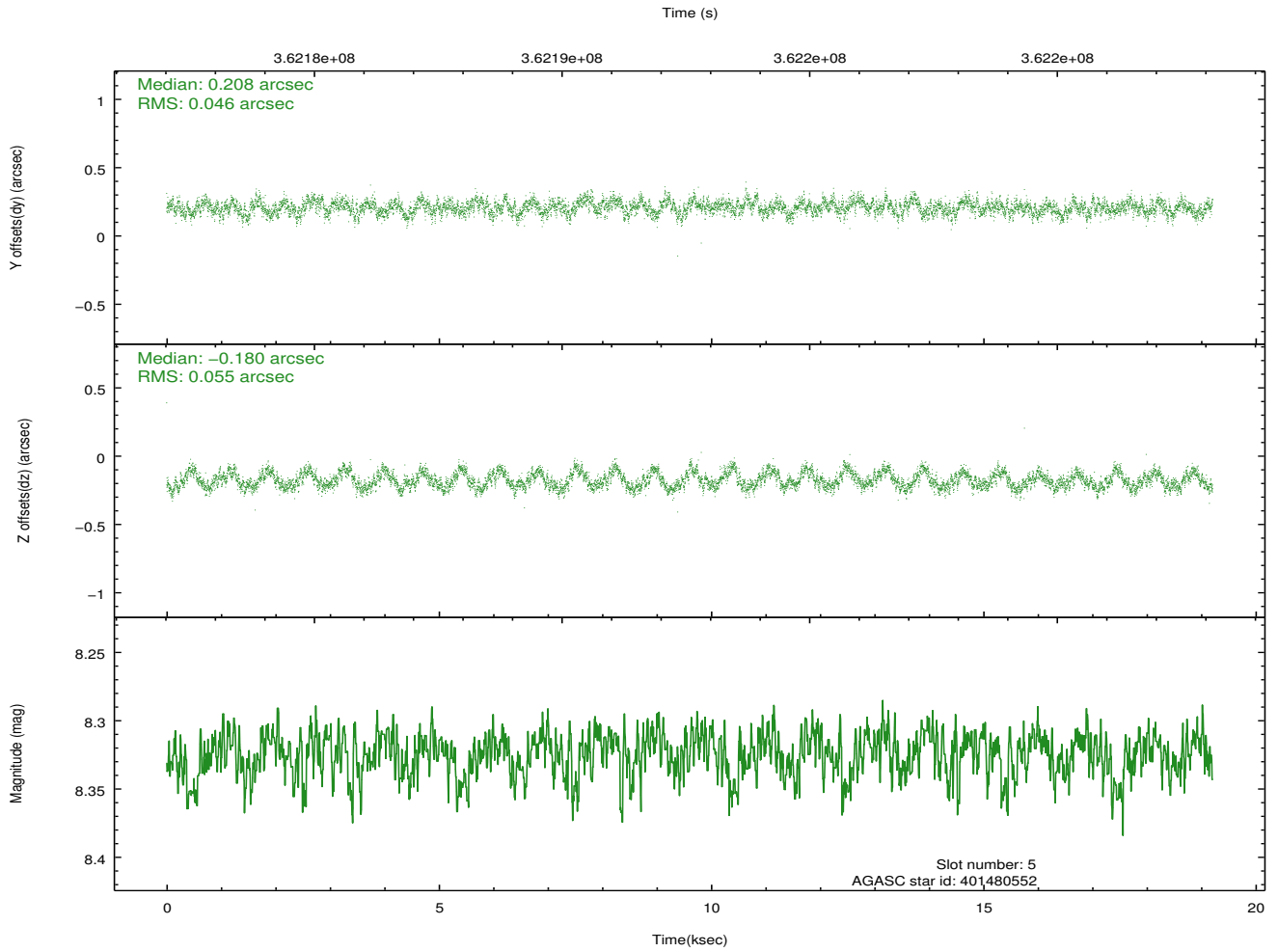
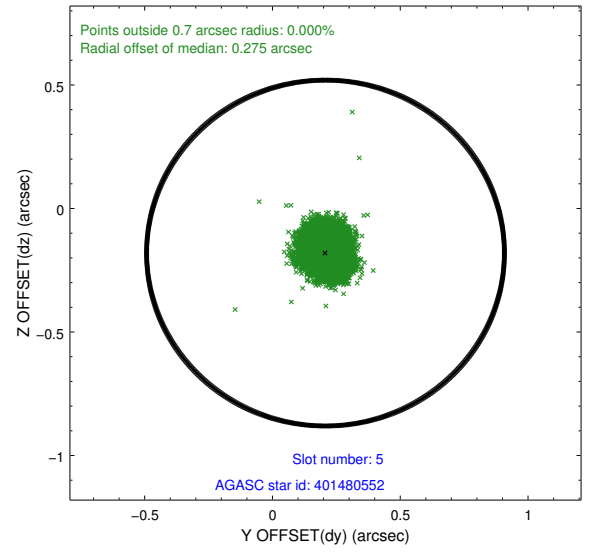
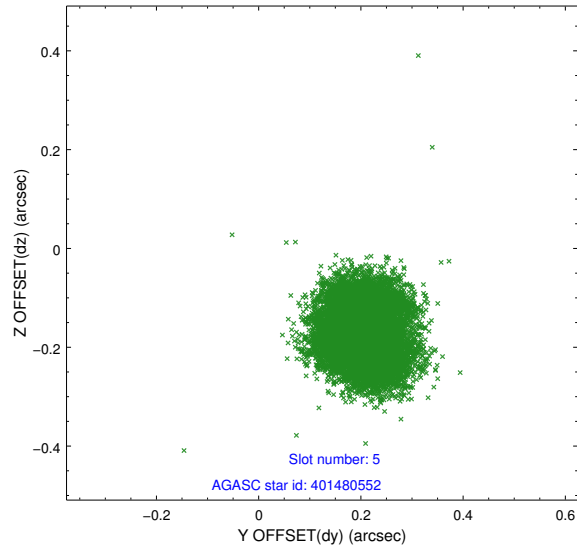
2.4.1 Slot 3



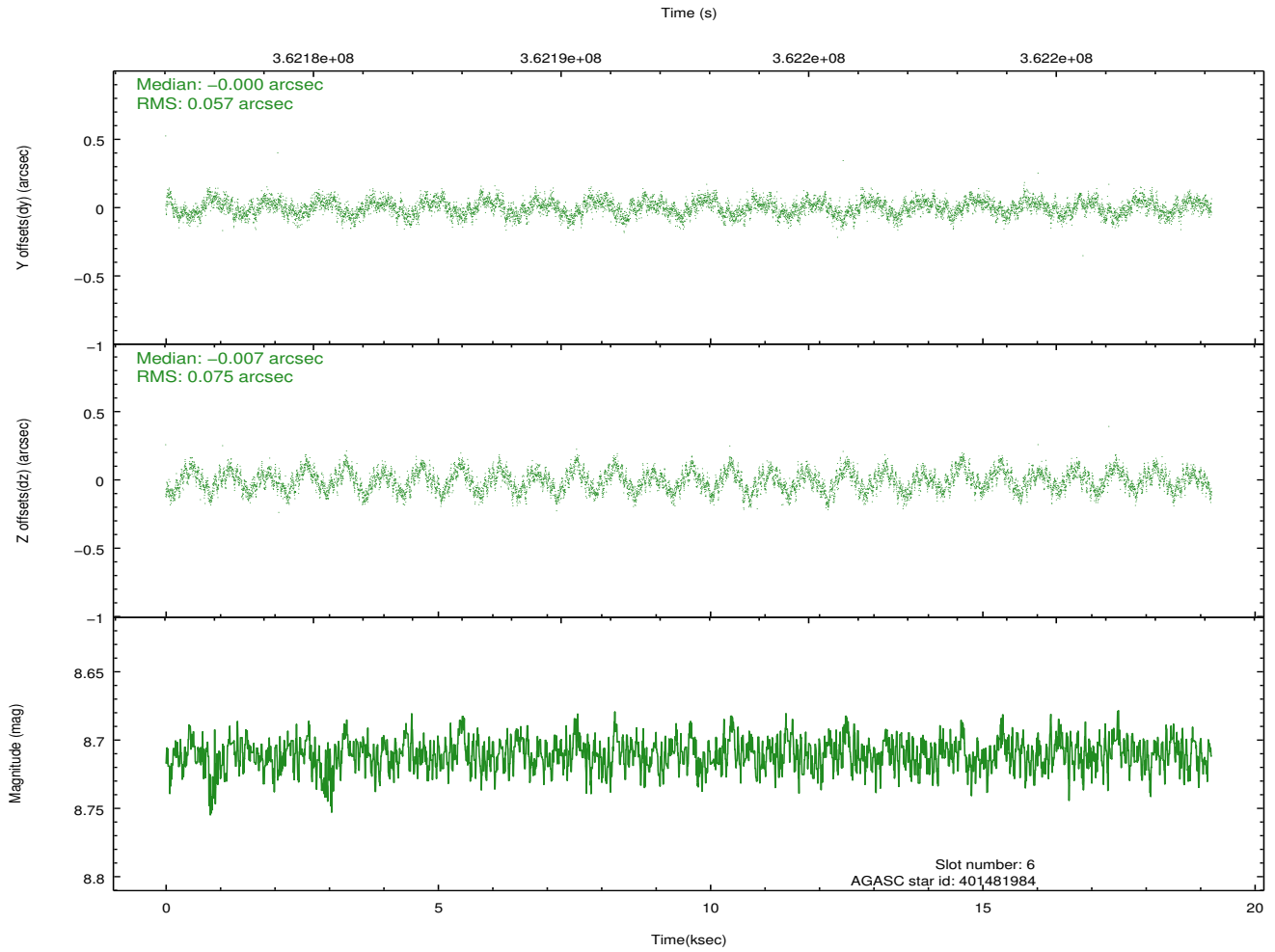
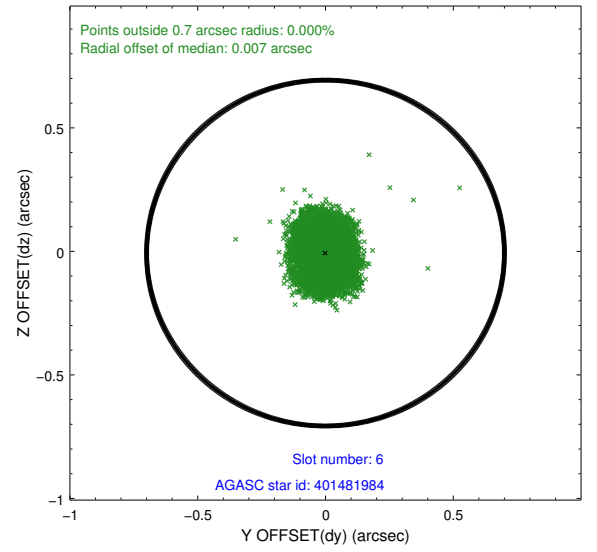
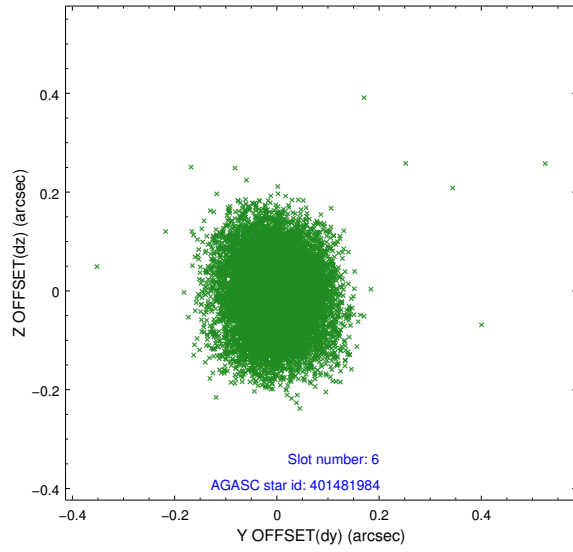
2.4.2 Slot 4



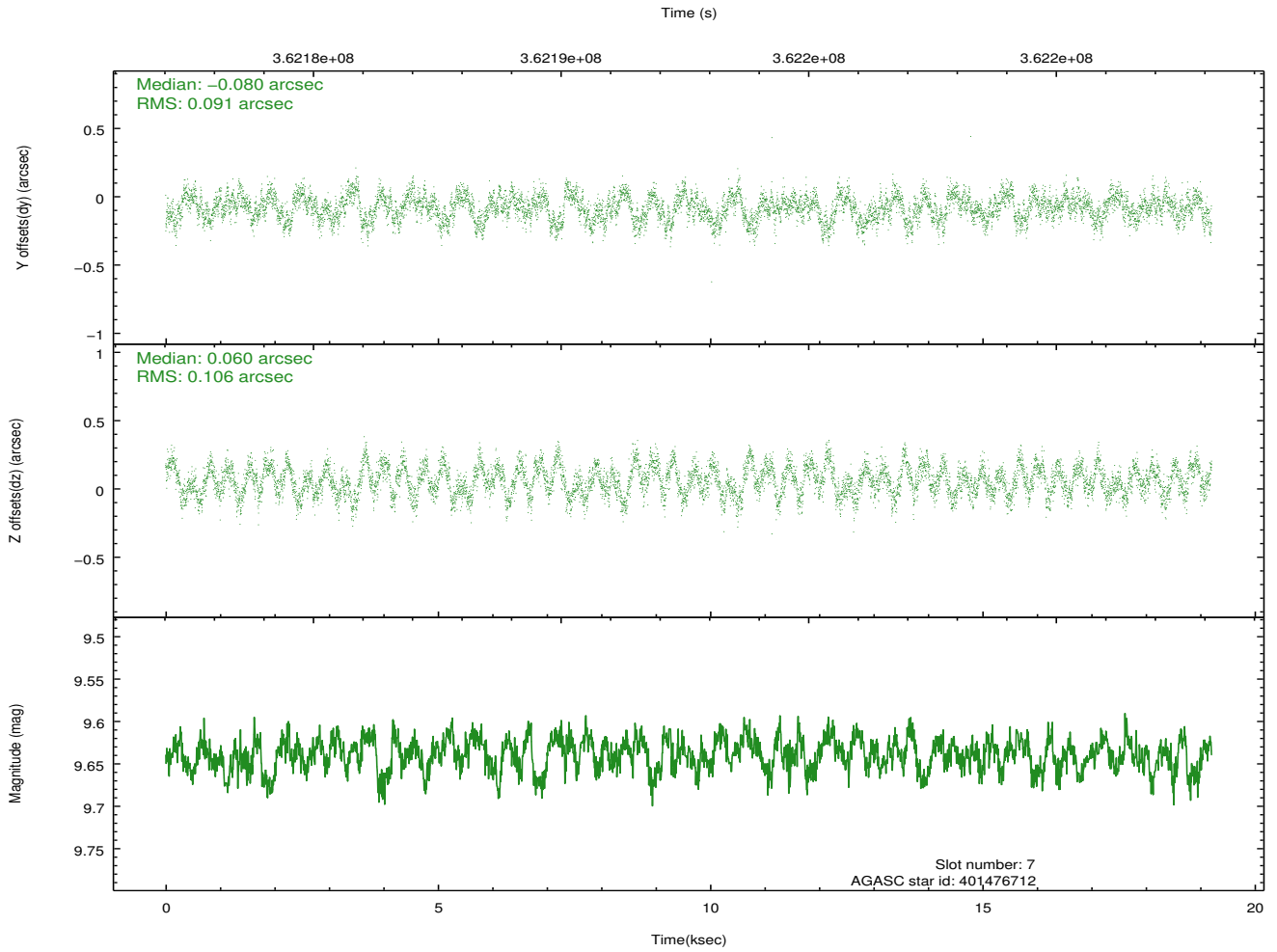
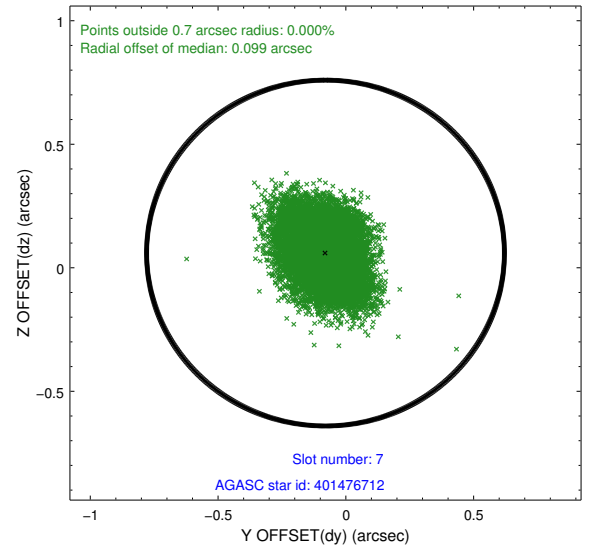
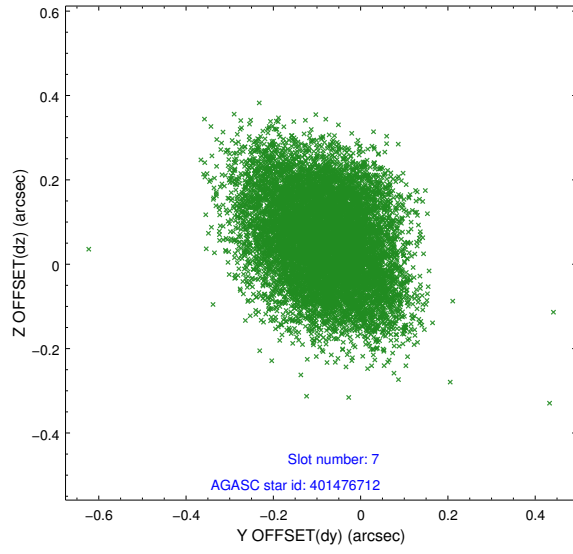
2.4.3 Slot 5



2.4.4 Slot 6

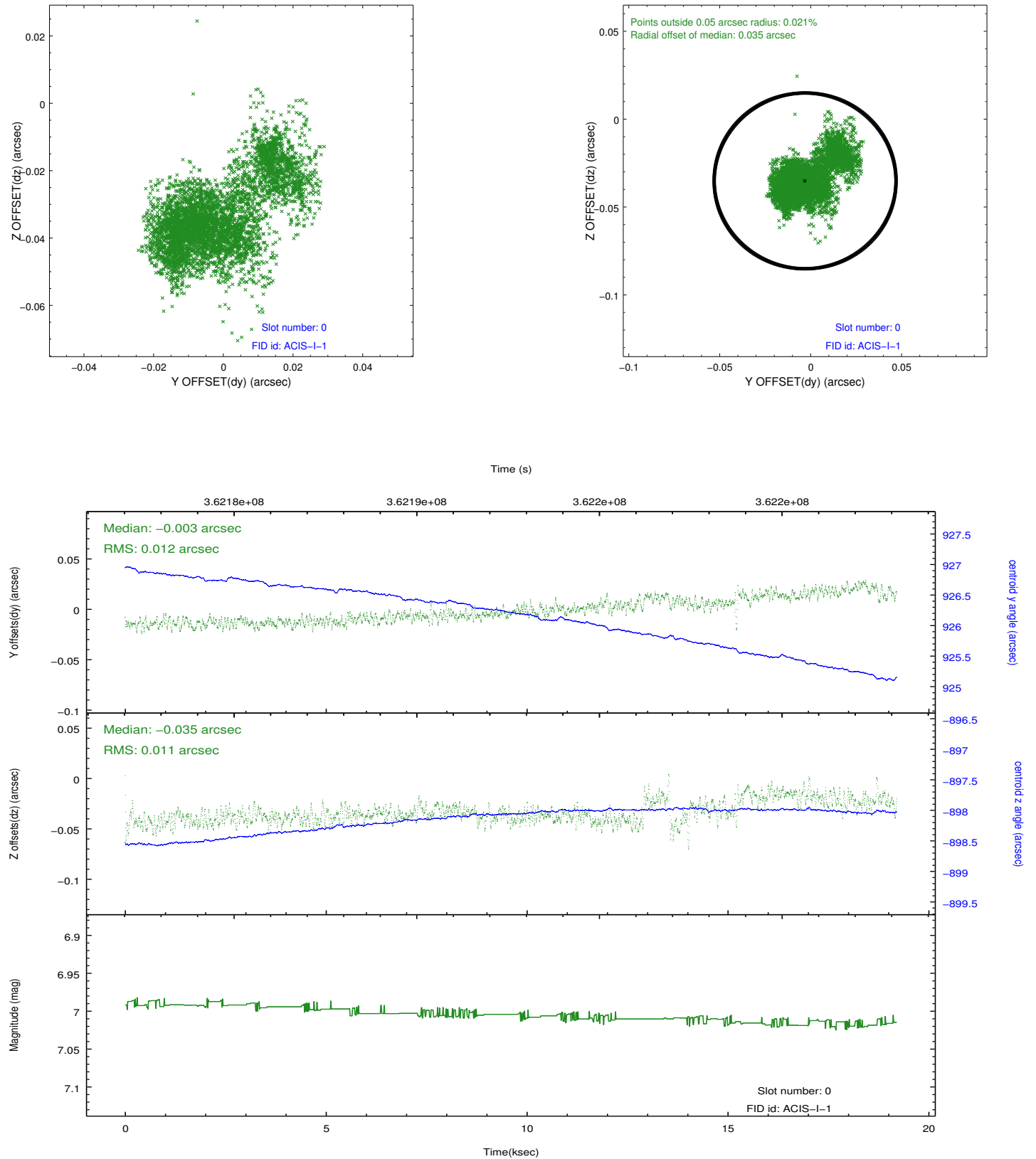


2.4.5 Slot 7

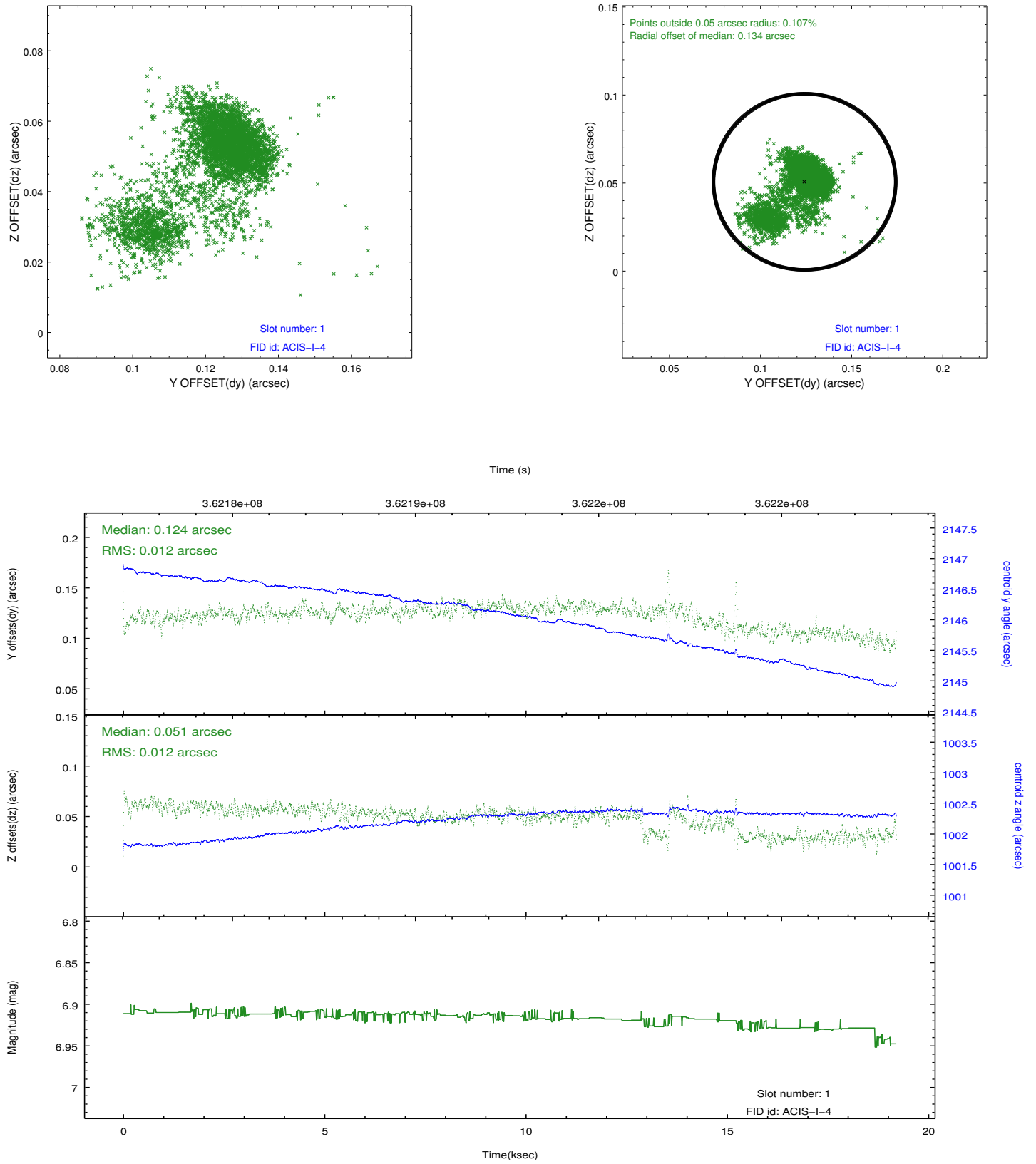


2.5 FID Slots

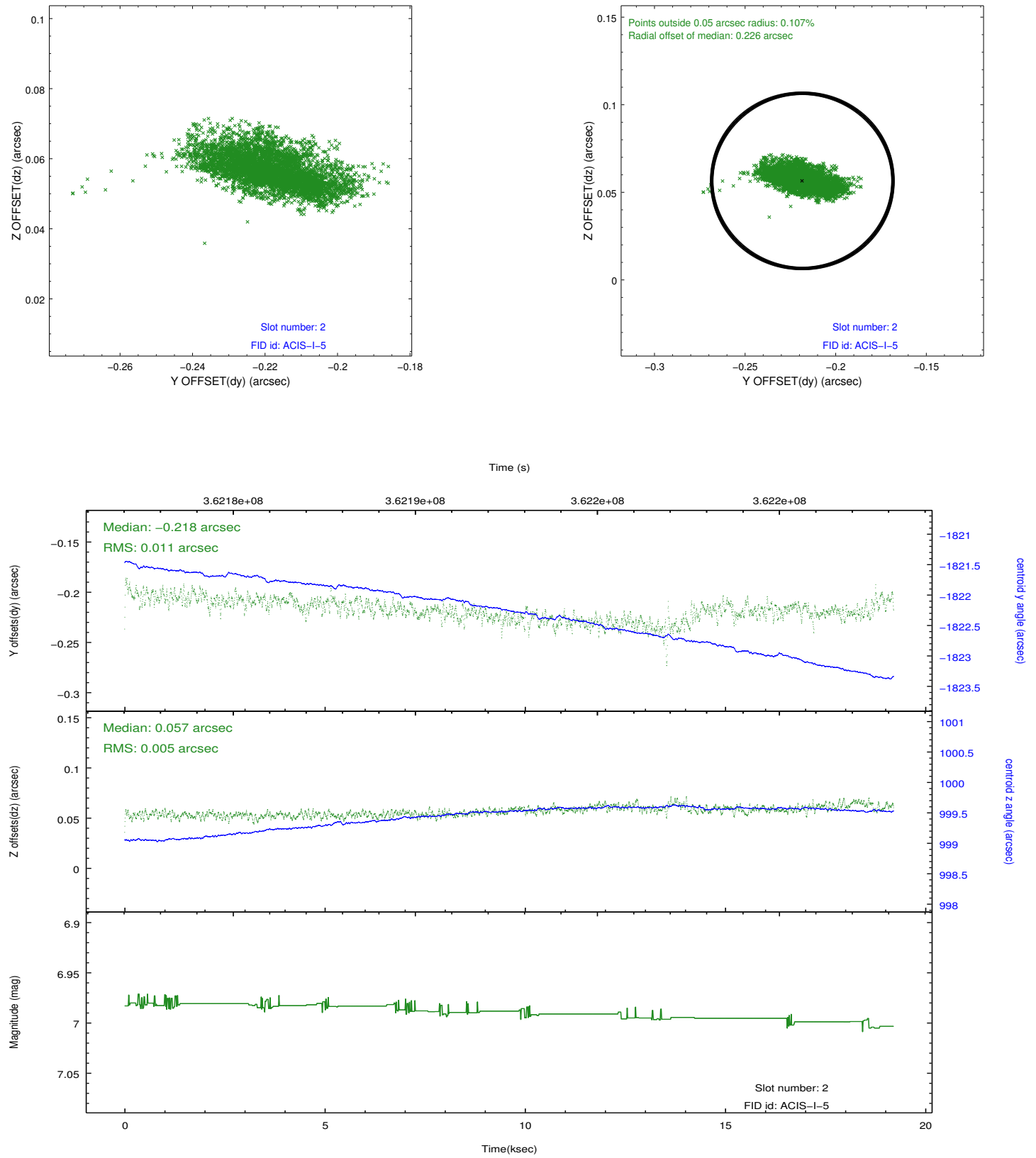
2.5.1 Slot 0



2.5.2 Slot 1



2.5.3 Slot 2



A Summary

A.1 Status

V&V Scientist	Jen Lauer
V&V Date (YYYY-MM-DD)	2012.06.12
V&V Edition	1
V&V Disposition and Status	OK
V&V Charge Time	19.0370591

A.2 Comments