

V&V Reference Report

L2 ASCDS Version : 8.4.4

Observation 10744 - L2 Version 2
Chandra X-Ray Center

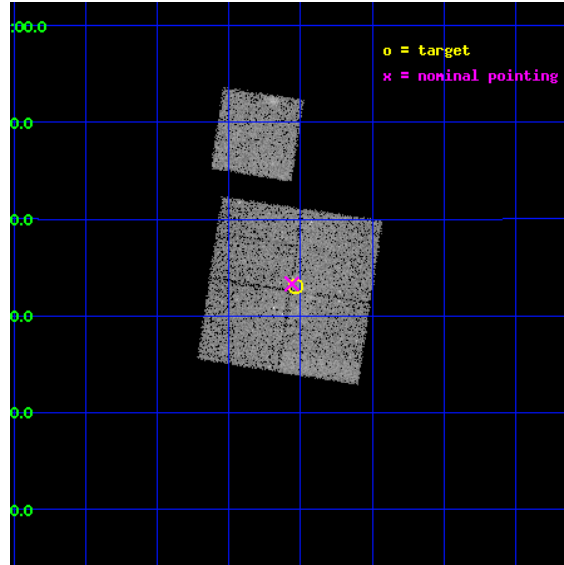
L2 Processing Date : May 25 2012

Contents

1	Front	2
2	OBI	3
2.1	OBI	3
2.1.1	Images	3
2.1.2	Bias	3
2.1.3	Parameters	4
2.1.4	Events	4
2.2	Compared Parameters	5
2.3	Aspect	6
2.4	Star Slots	9
2.4.1	Slot 3	9
2.4.2	Slot 4	10
2.4.3	Slot 5	11
2.4.4	Slot 6	12
2.4.5	Slot 7	13
2.5	FID Slots	14
2.5.1	Slot 0	14
2.5.2	Slot 1	15
2.5.3	Slot 2	16
A	Summary	17
A.1	Status	17
A.2	Comments	17

1 Front

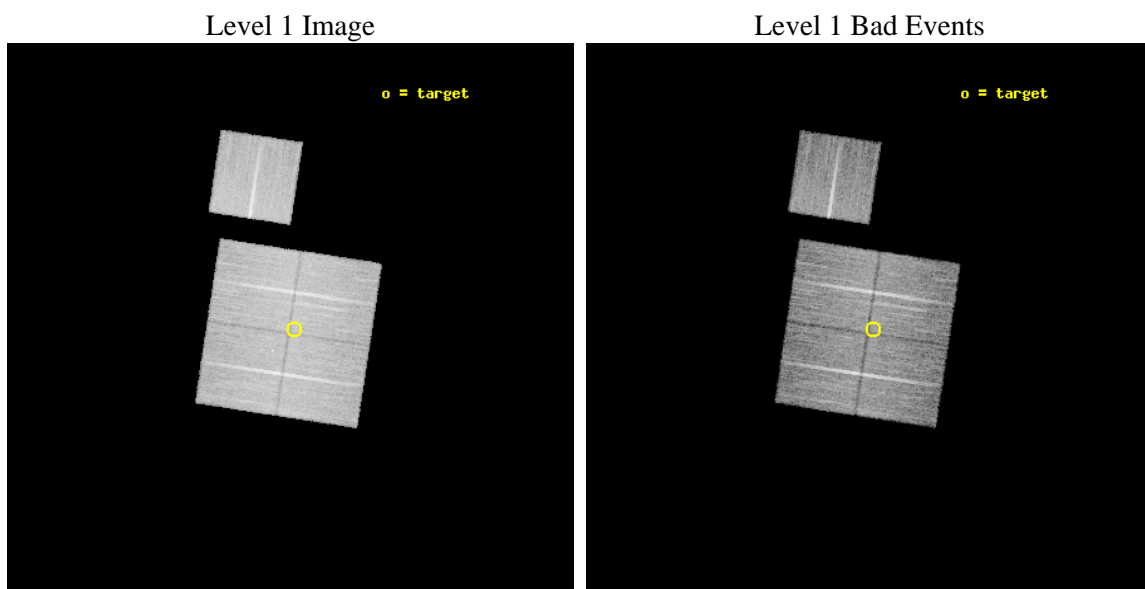
seq_num	800845	Sequence number
obs_id	10744	Observation id
title	Merging Clusters in DEEP2 Field 4	Proposal title
observer	Dr. Stephen Murray	Principal investigator
object	PDCS-016	Source name
dtcycle	0	
cycle	P	events from which exps? Prim/Second/Both
ra_targ	37.132917	Observer's specified target RA [deg]
dec_targ	0.551556	Observer's specified target Dec [deg]
ra_nom	37.140173392338	Nominal RA [deg]
dec_nom	0.55509477239699	Nominal Dec [deg]
roll_nom	8.7086154546117	Nominal Roll [deg]
revision	2	Processing version of data
ontime	14938.85912466	Sum of GTIs [s]
livetime	14743.671932369	Livetime [s]
ontime0	14938.859114707	Sum of GTIs [s]
ontime1	14942.000114918	Sum of GTIs [s]
ontime2	14938.859134614	Sum of GTIs [s]
ontime3	14938.85912466	Sum of GTIs [s]
ontime6	14938.85912466	Sum of GTIs [s]
l2events	53779	Number of level 2 events



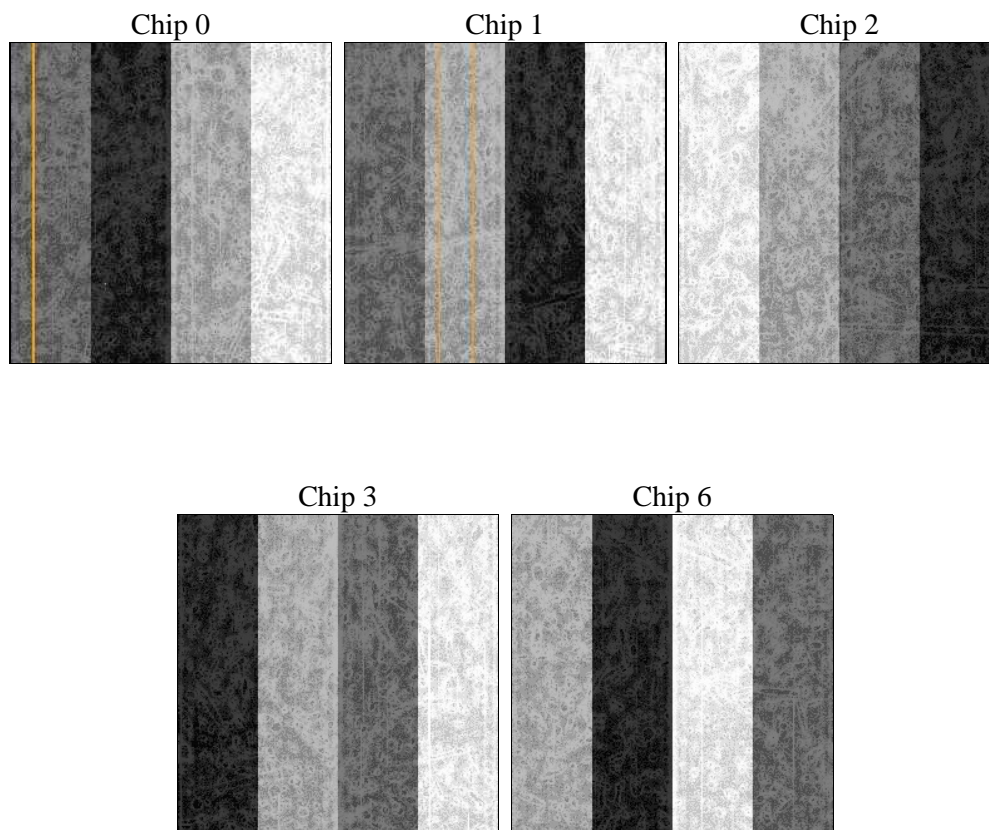
2 OBI

2.1 OBI

2.1.1 Images



2.1.2 Bias



2.1.3 Parameters

obi_num	0	Obi number	sched_exp_time	14800.000000	[s] Scheduled observation exposure time
ascdsver	8.4.4	Processing system revision	ontime	14938.85912466	Sum of GTIs [s]
caldbver	4.4.9	 	ontime0	14938.859114707	Sum of GTIs [s]
date	2012-05-25T05:38:04	Date and time of file creation	ontime1	14942.000114918	Sum of GTIs [s]
revision	2	Processing version of data	ontime2	14938.859134614	Sum of GTIs [s]
			ontime3	14938.85912466	Sum of GTIs [s]
			ontime6	14938.85912466	Sum of GTIs [s]
			l1events	628330	Number of level 1 events

2.1.4 Events

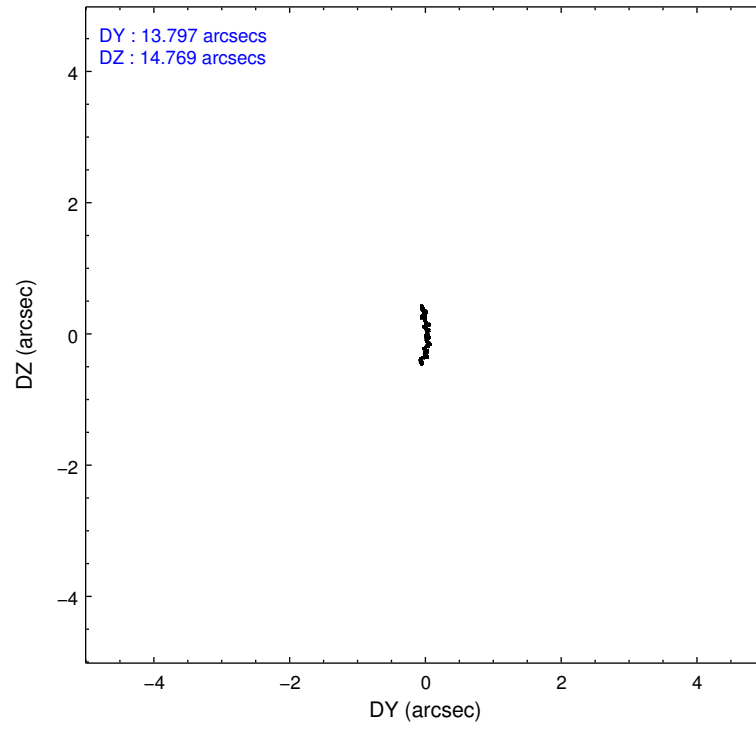
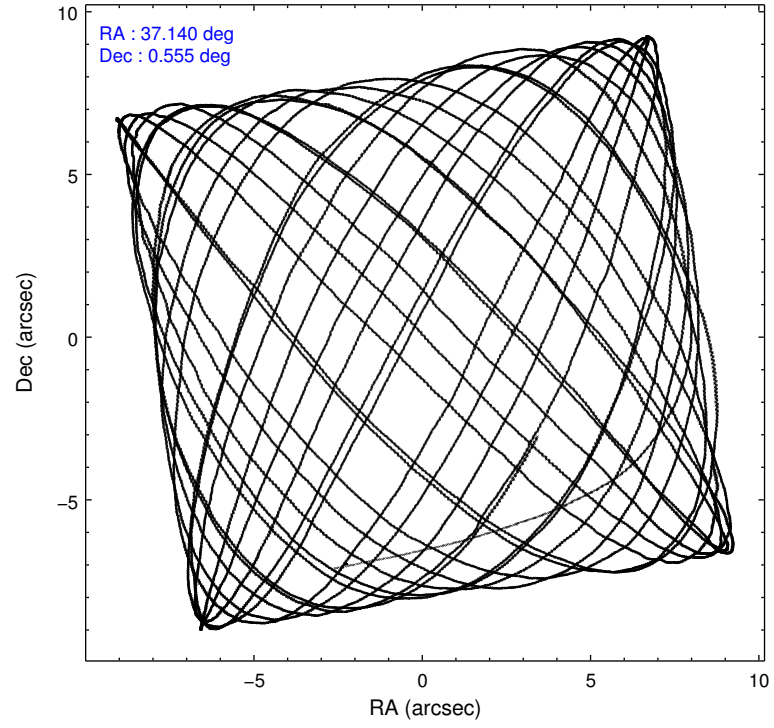
	ccd 0	ccd 1	ccd 2	ccd 3	ccd 6
level 1 events	120173	121257	133453	126002	127445
rejected events	107380	106879	121338	114053	114343
rejected %	89%	88%	90%	90%	89%

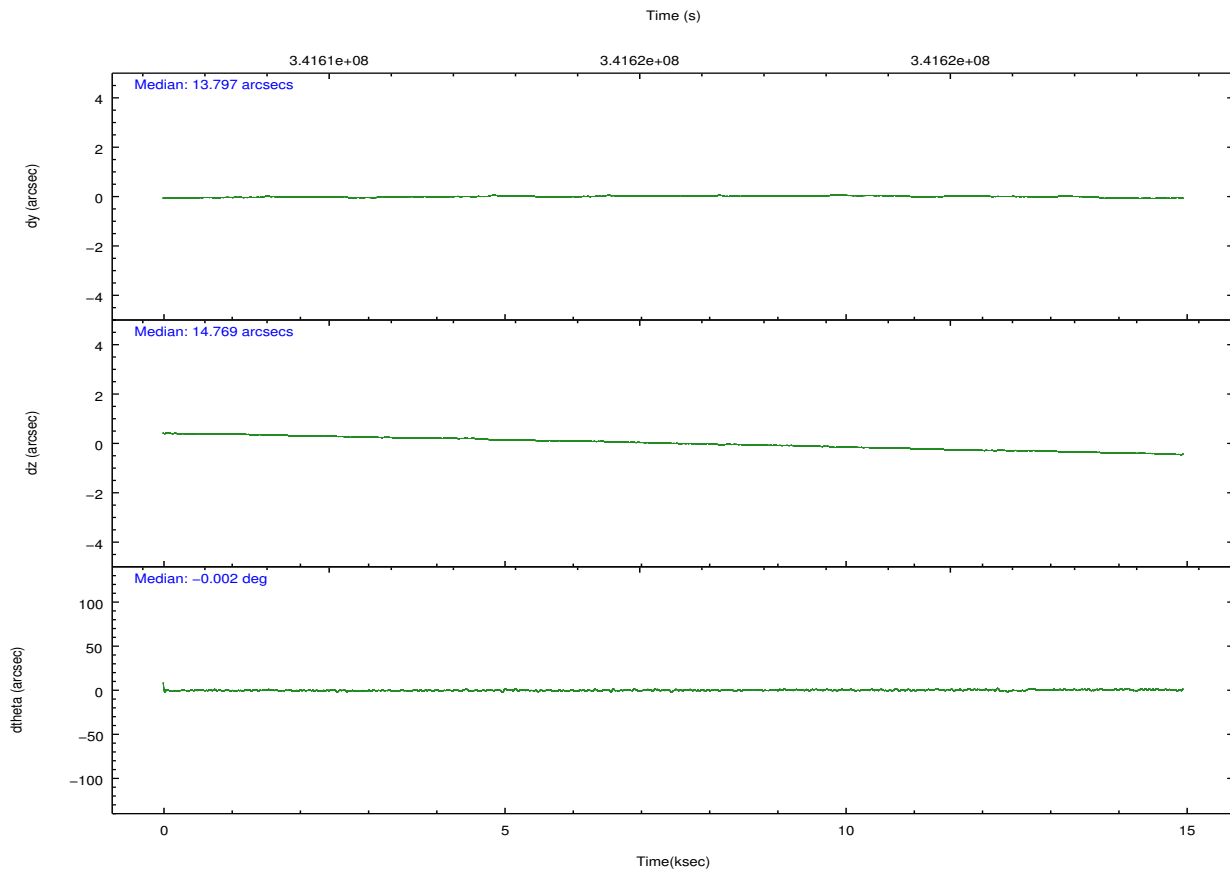
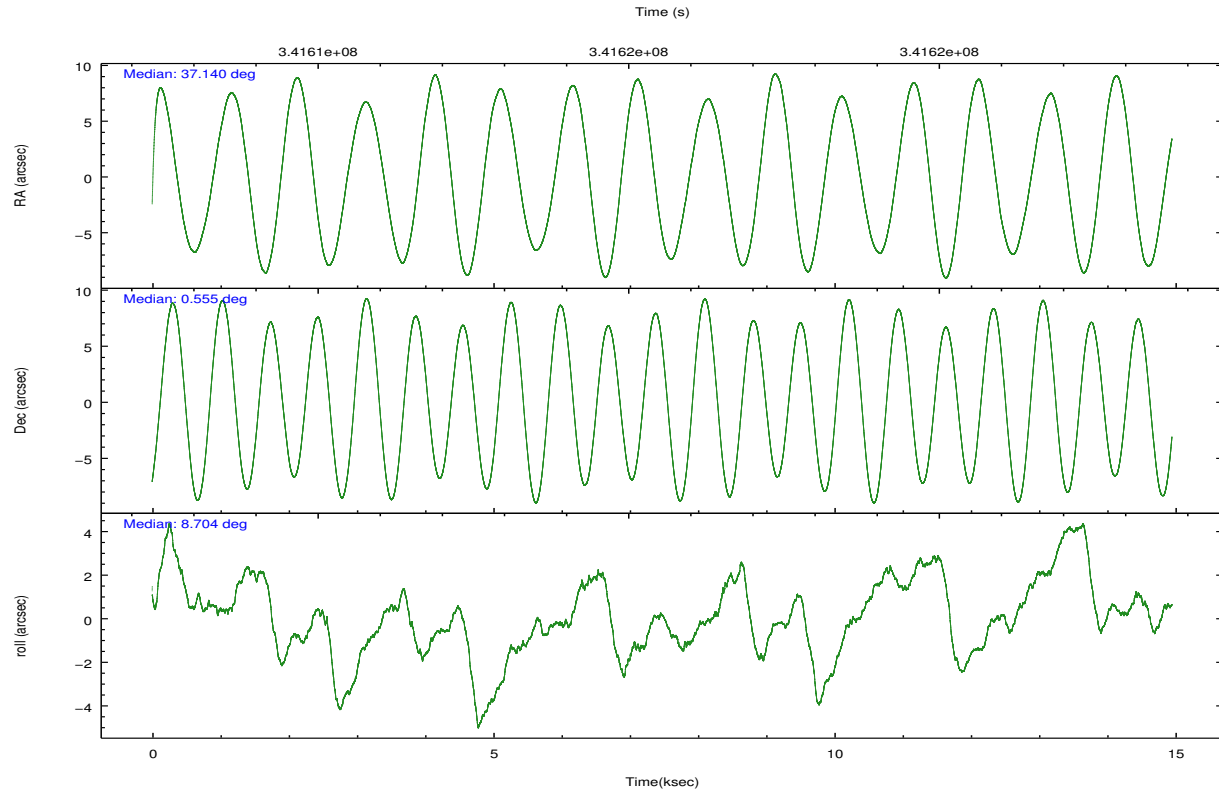
	ccd 0	ccd 1	ccd 2	ccd 3	ccd 6
grade 0 events	4853	5540	4559	4396	5086
	4%	4%	3%	3%	3%
grade 1 events	72	83	88	80	79
	0%	0%	0%	0%	0%
grade 2 events	3208	3537	3032	2896	3054
	2%	2%	2%	2%	2%
grade 3 events	1440	1512	1438	1364	1426
	1%	1%	1%	1%	1%
grade 4 events	1458	1527	1339	1328	1364
	1%	1%	1%	1%	1%
grade 5 events	4614	5143	4406	5289	5224
	3%	4%	3%	4%	4%
grade 6 events	2478	2966	2291	2517	2796
	2%	2%	1%	1%	2%
grade 7 events	102050	100949	116300	108132	108416
	84%	83%	87%	85%	85%

2.2 Compared Parameters

Parameter	Planned	Actual	Parameter	Planned	Actual
Instrument	ACIS	ACIS	Obspar format version number	7	7
Detector	ACIS-01236	ACIS-01236	Obspar file type	PREDICTED	ACTUAL
Grating	NONE	NONE	Obspar update status	NONE	UPDATED
Data mode	VFAINT	VFAINT	CCD I0 on	Y	Y
Observation mode	POINTING	POINTING	CCD I1 on	Y	Y
[deg] Pointing RA	37.118787	37.14017339233762	CCD I2 on	Y	Y
[deg] Pointing Dec	0.537819	0.5550947723969935	CCD I3 on	Y	Y
[deg] Pointing Roll	8.500137	8.708615454611735	CCD S0 on	N	N
[mm] SIM focus pos	-0.782348	-0.7809083437167272	CCD S1 on	N	N
[mm] SIM defocus	0	0.001439871863259334	CCD S2 on	O1	Y
[mm] SIM translation stage pos	-233.592463	-233.5874344608287	CCD S3 on	N	N
[mm] SIM translation stage offset	0	-0.005018542100998502	CCD S4 on	N	N
[s] Observation start time (MET)	341608201.184000	341606860.83616	CCD S5 on	N	N
Observation start date	2008-10-28T19:08:56	2008-10-28T18:47:40	Number of optional ACIS chips dropped	0	0
[s] Observation end time (MET)	341623001.184000	341623606.26199	On-chip summing requested	N	N
Observation end date	2008-10-28T23:15:36	2008-10-28T23:26:46	Subarray requested	NONE	NONE
Read mode	TIMED	TIMED	Alternating exposures requested	N	N
			[s] Primary exposure time	0.000000	3.1

2.3 Aspect



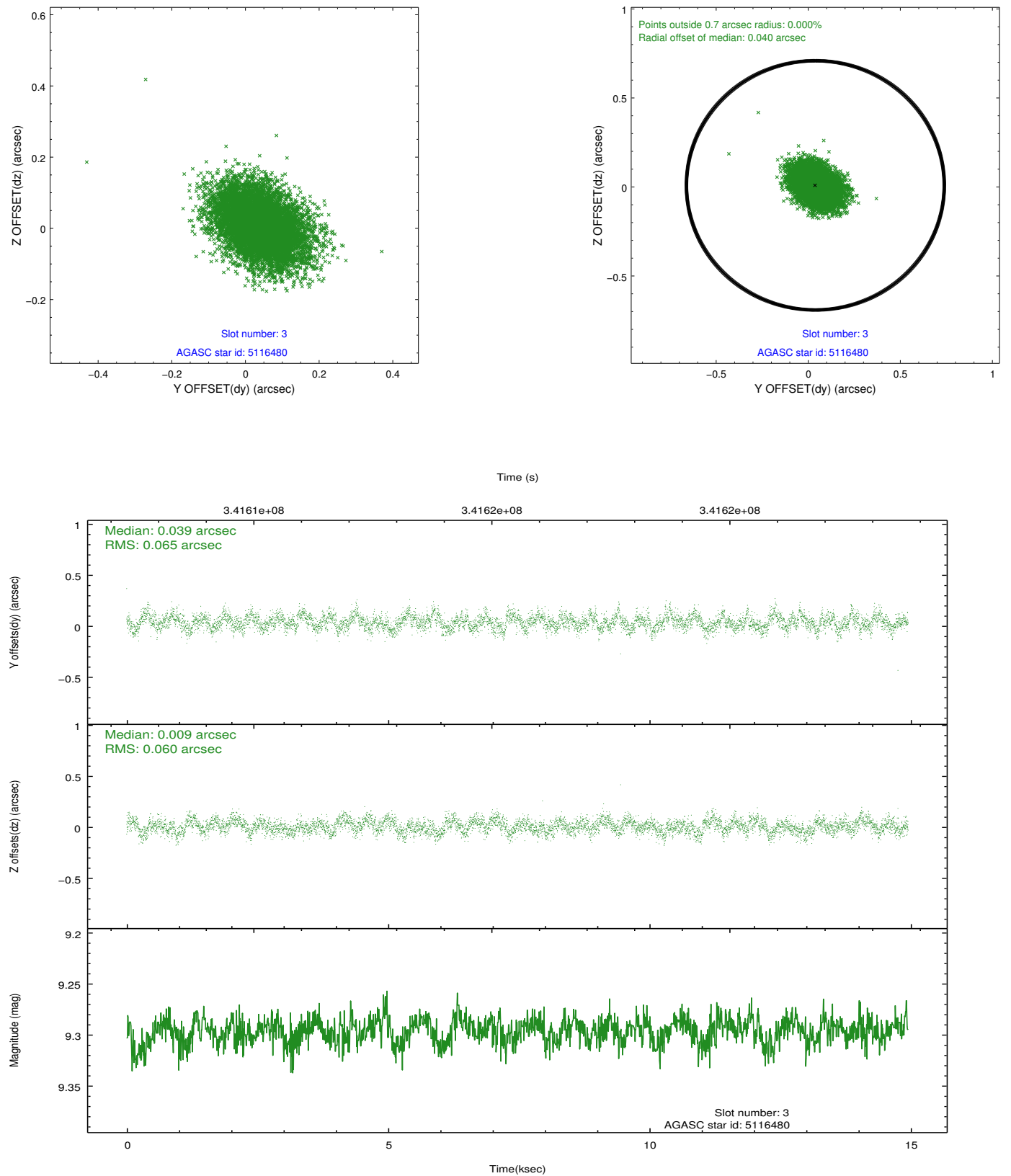


Slot Statistics

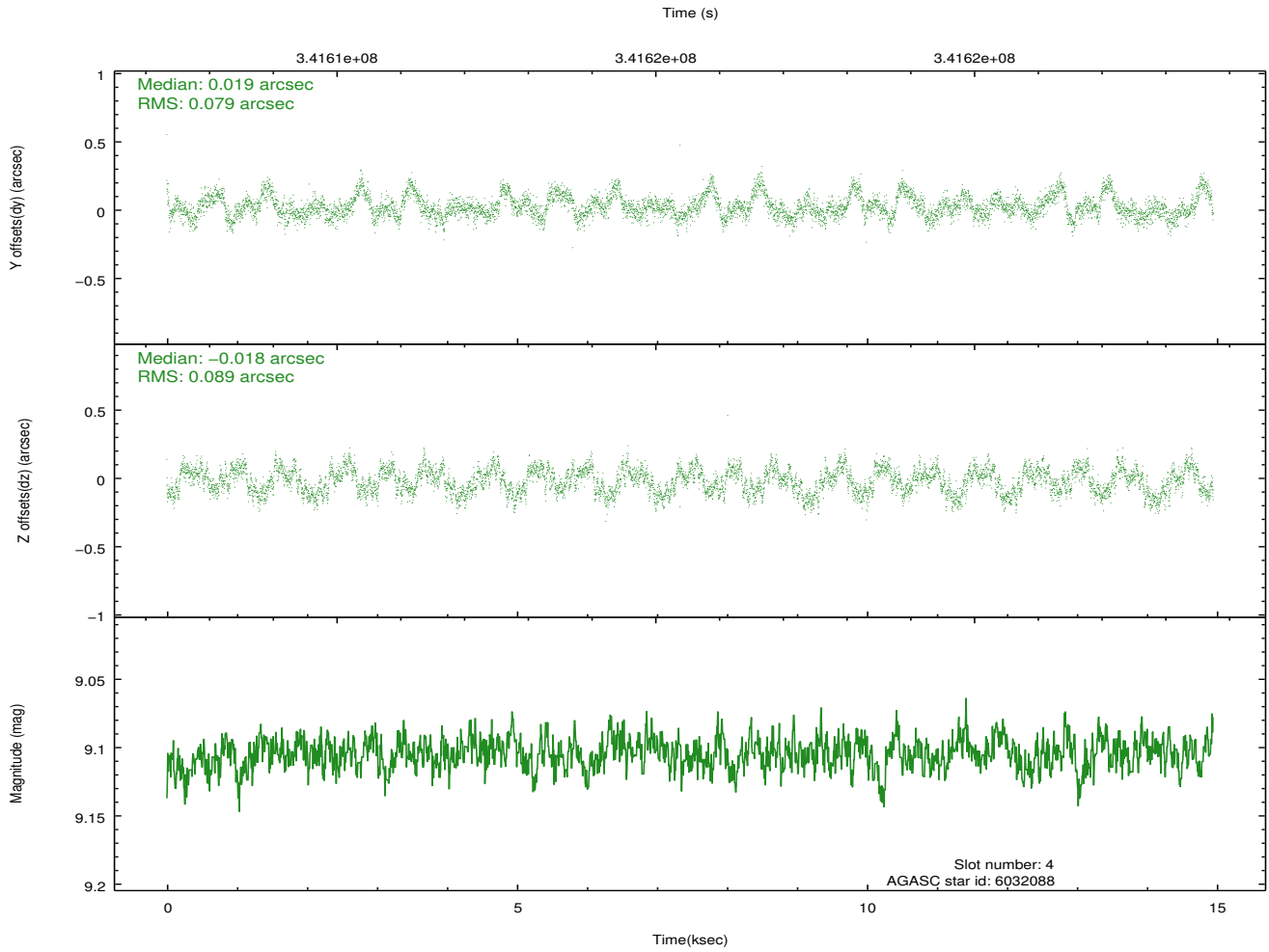
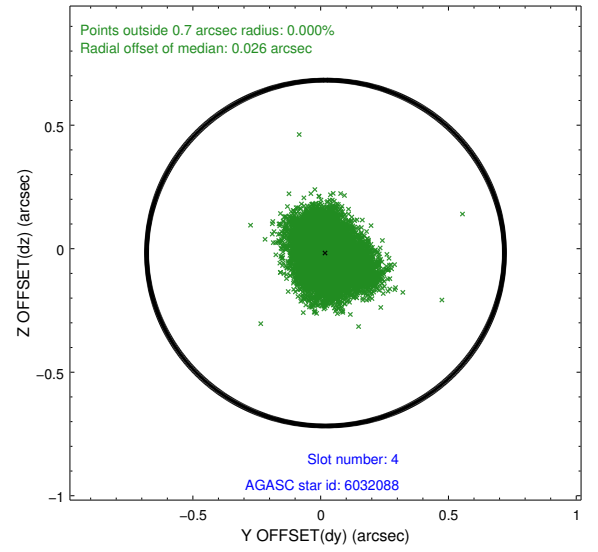
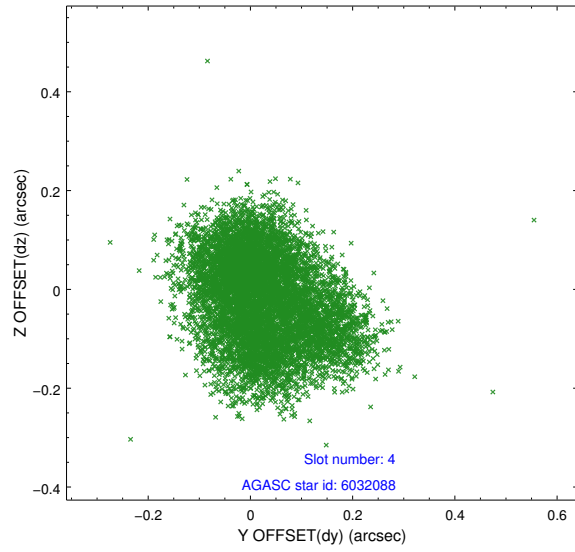
slot	status	id	mag	n_pts	med_dy	med_dz	dr1	dr2	ra	dec	mean_y	mean_z
0	FID	ACIS-I-2	6.88	3646	-0.079	-0.084	0.019	0.032	0.000000	0.000000	-768.55	-844.81
1	FID	ACIS-I-4	6.88	3647	0.199	0.073	0.010	0.016	0.000000	0.000000	2145.64	1061.38
2	FID	ACIS-I-5	6.93	3647	-0.222	0.080	0.013	0.021	0.000000	0.000000	-1822.14	1059.56
3	GUIDE	5116480	9.30	7286	0.039	0.009	0.093	0.153	36.624607	0.603451	-1723.89	496.76
4	GUIDE	6032088	9.10	7291	0.019	-0.018	0.129	0.197	37.532714	0.102881	1242.62	-1768.52
5	GUIDE	6042384	6.42	7294	-0.006	0.027	0.069	0.115	37.688348	0.255749	1877.83	-1307.49
6	GUIDE	5115776	9.66	7284	-0.011	0.034	0.120	0.199	36.405971	0.913022	-2337.67	1715.37
7	GUIDE	6034024	9.67	7263	-0.043	-0.040	0.147	0.236	37.505848	1.160303	1708.87	2011.14

2.4 Star Slots

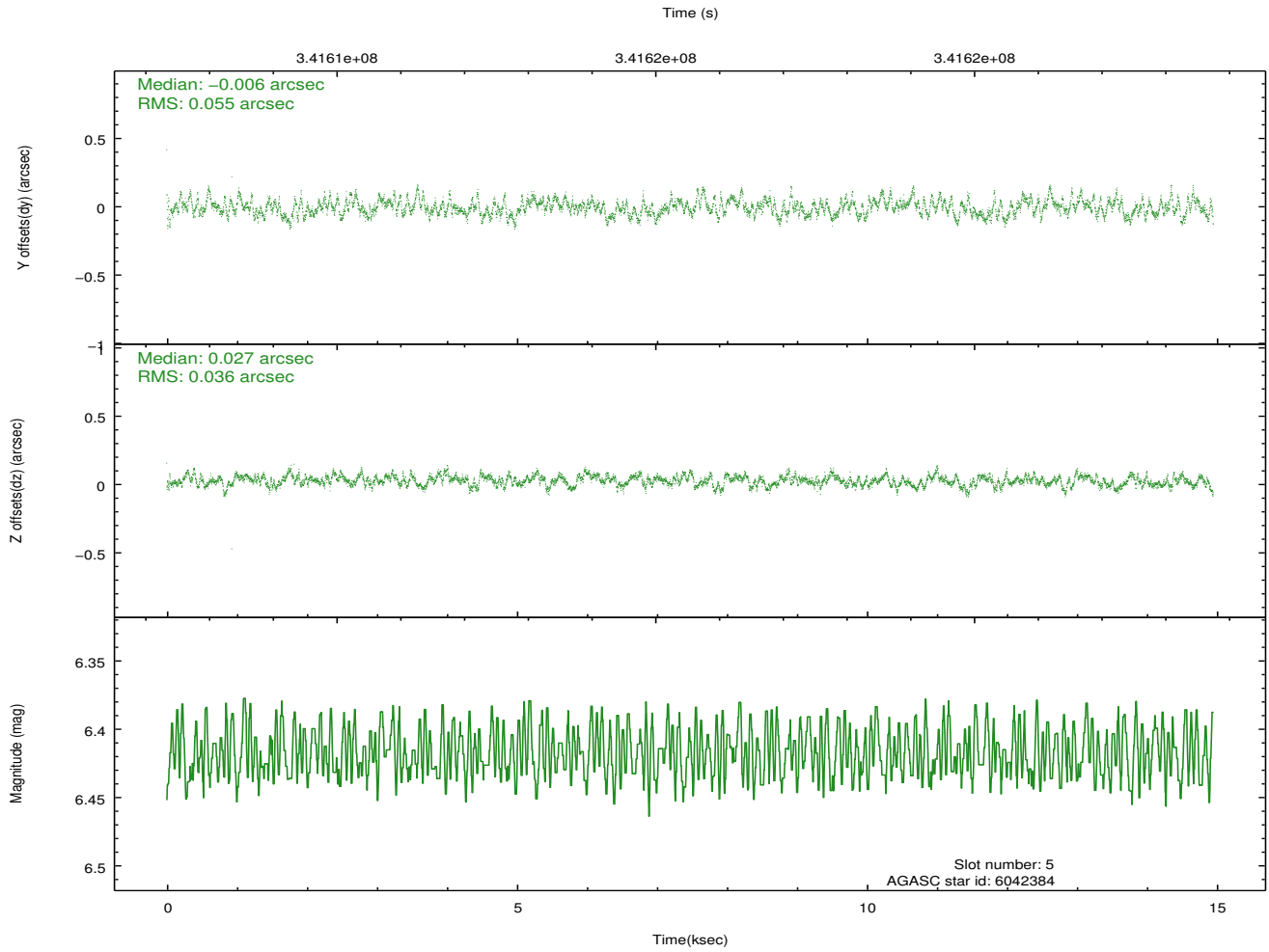
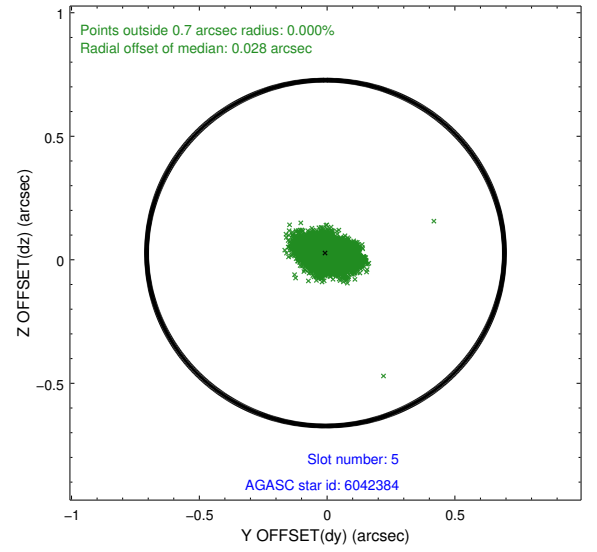
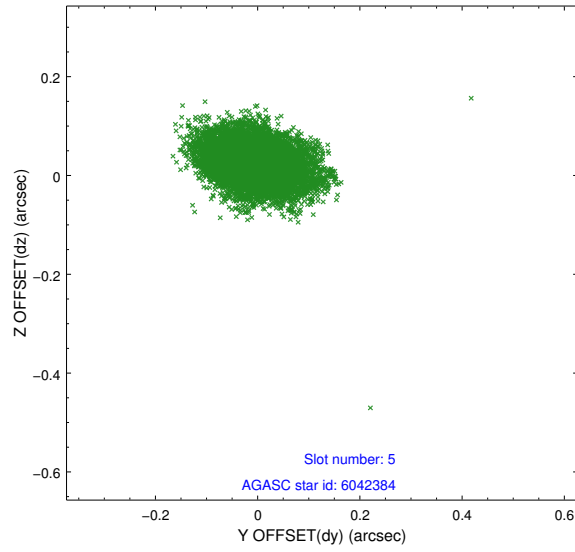
2.4.1 Slot 3



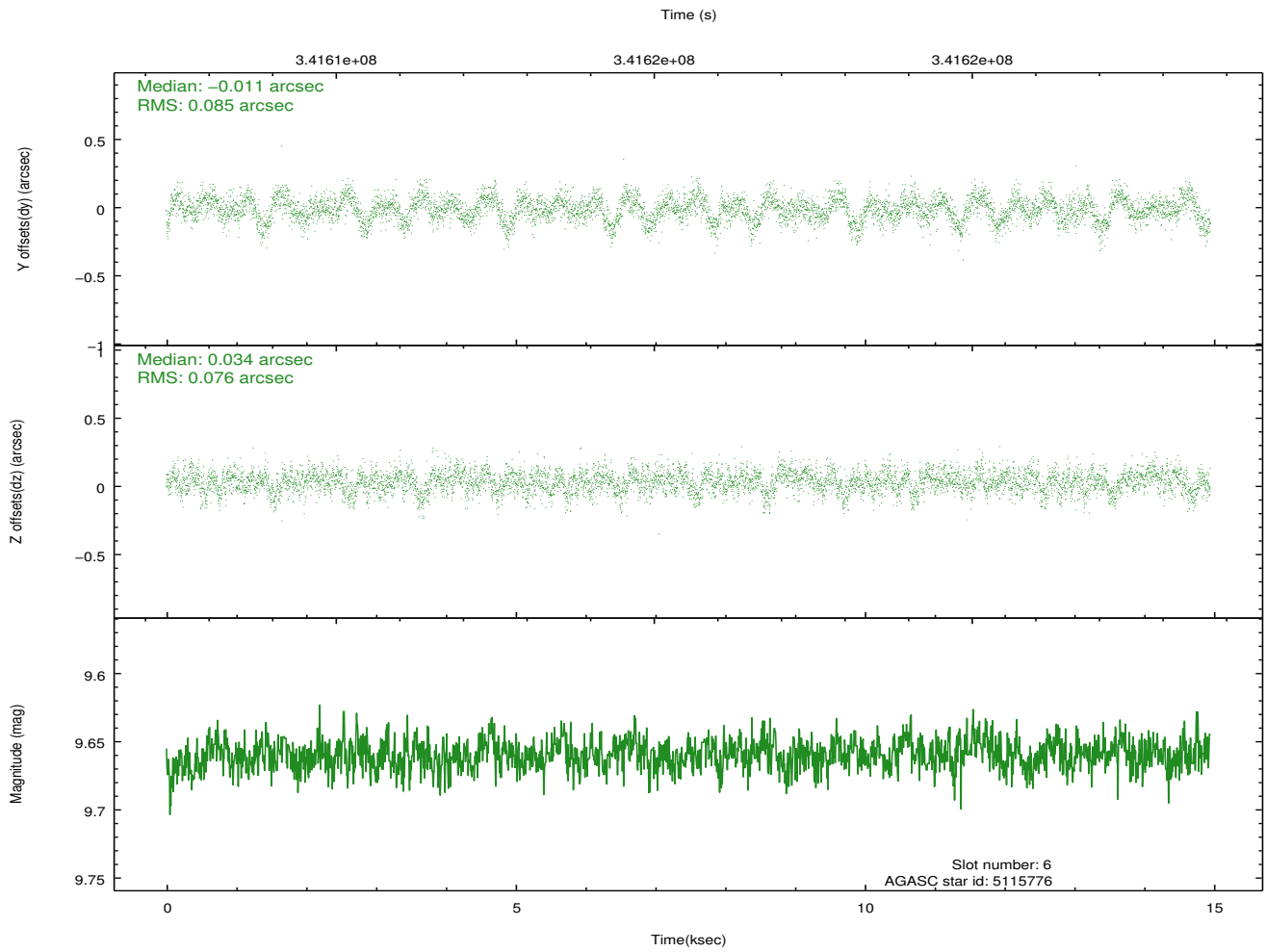
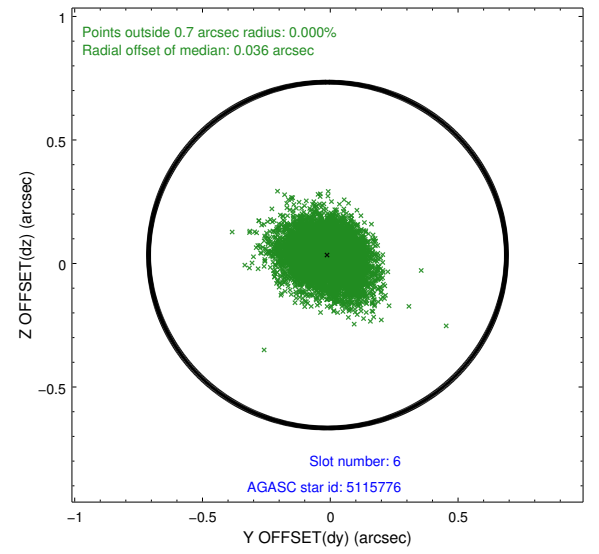
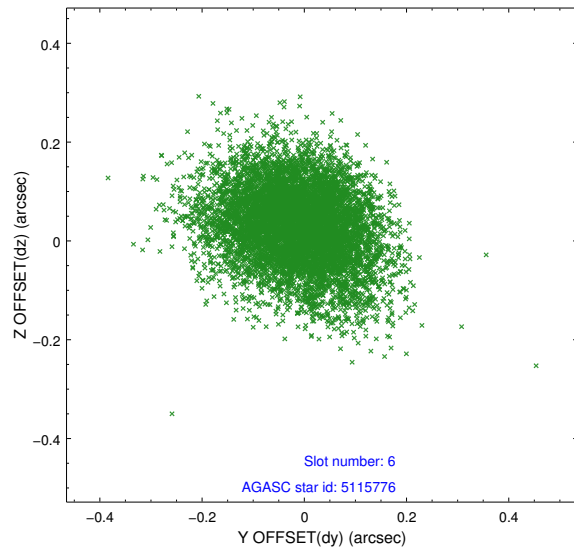
2.4.2 Slot 4



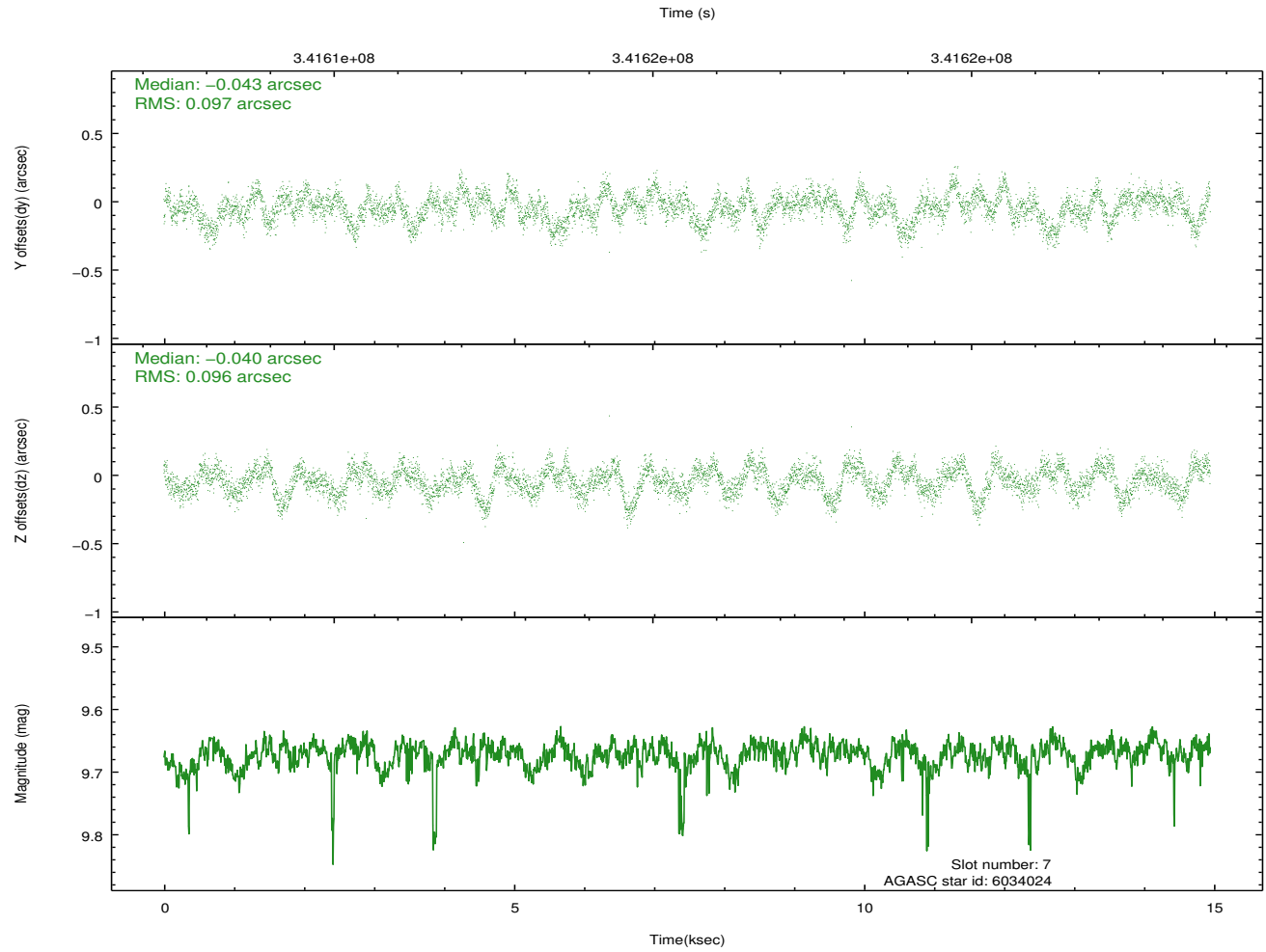
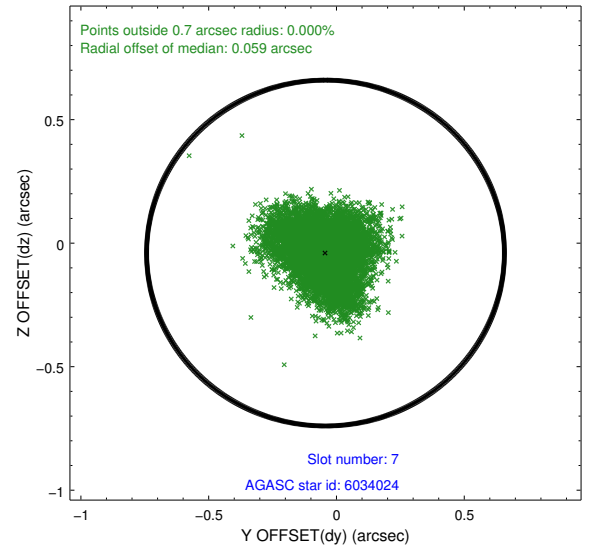
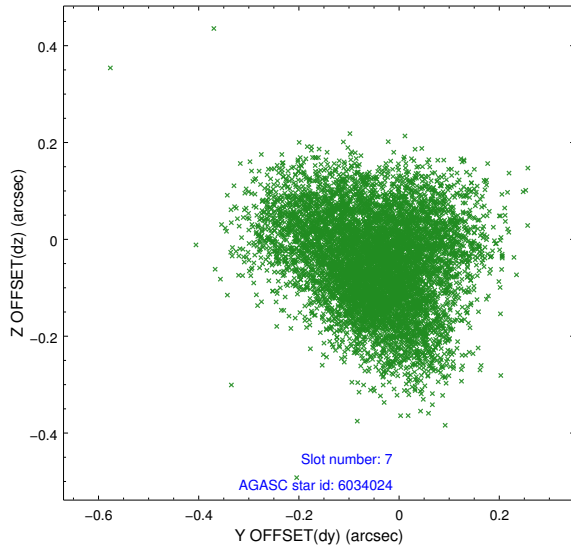
2.4.3 Slot 5



2.4.4 Slot 6

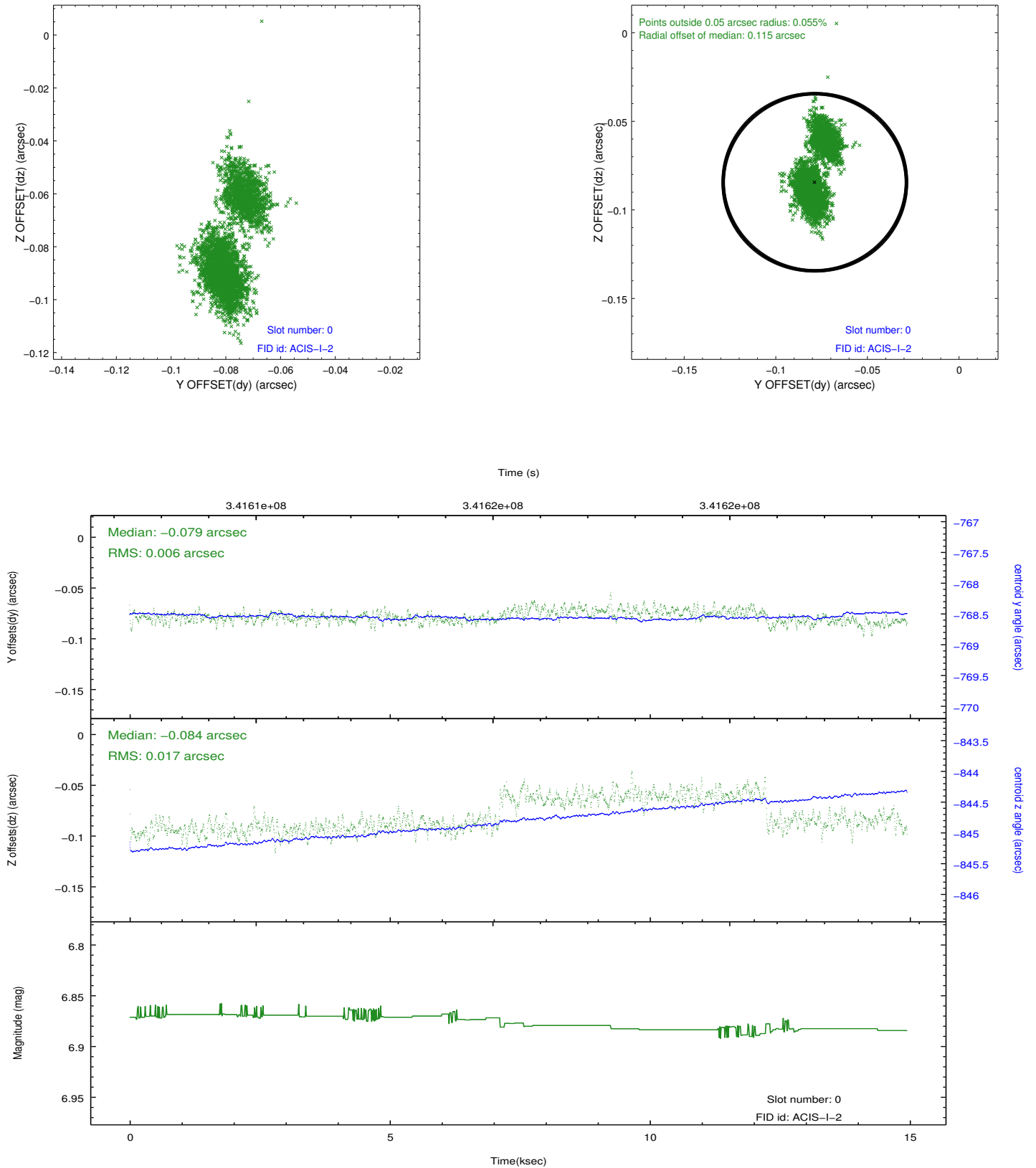


2.4.5 Slot 7

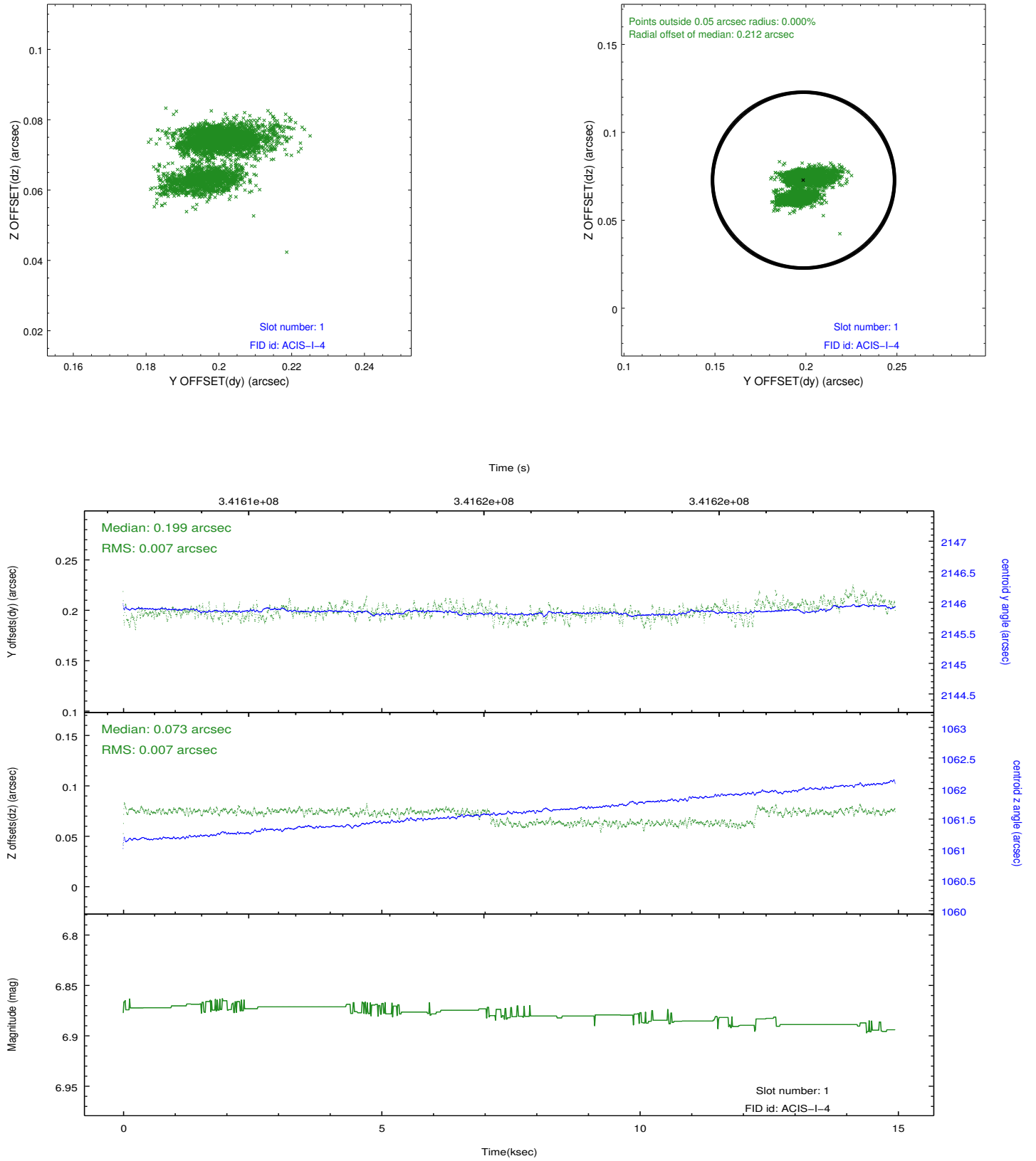


2.5 FID Slots

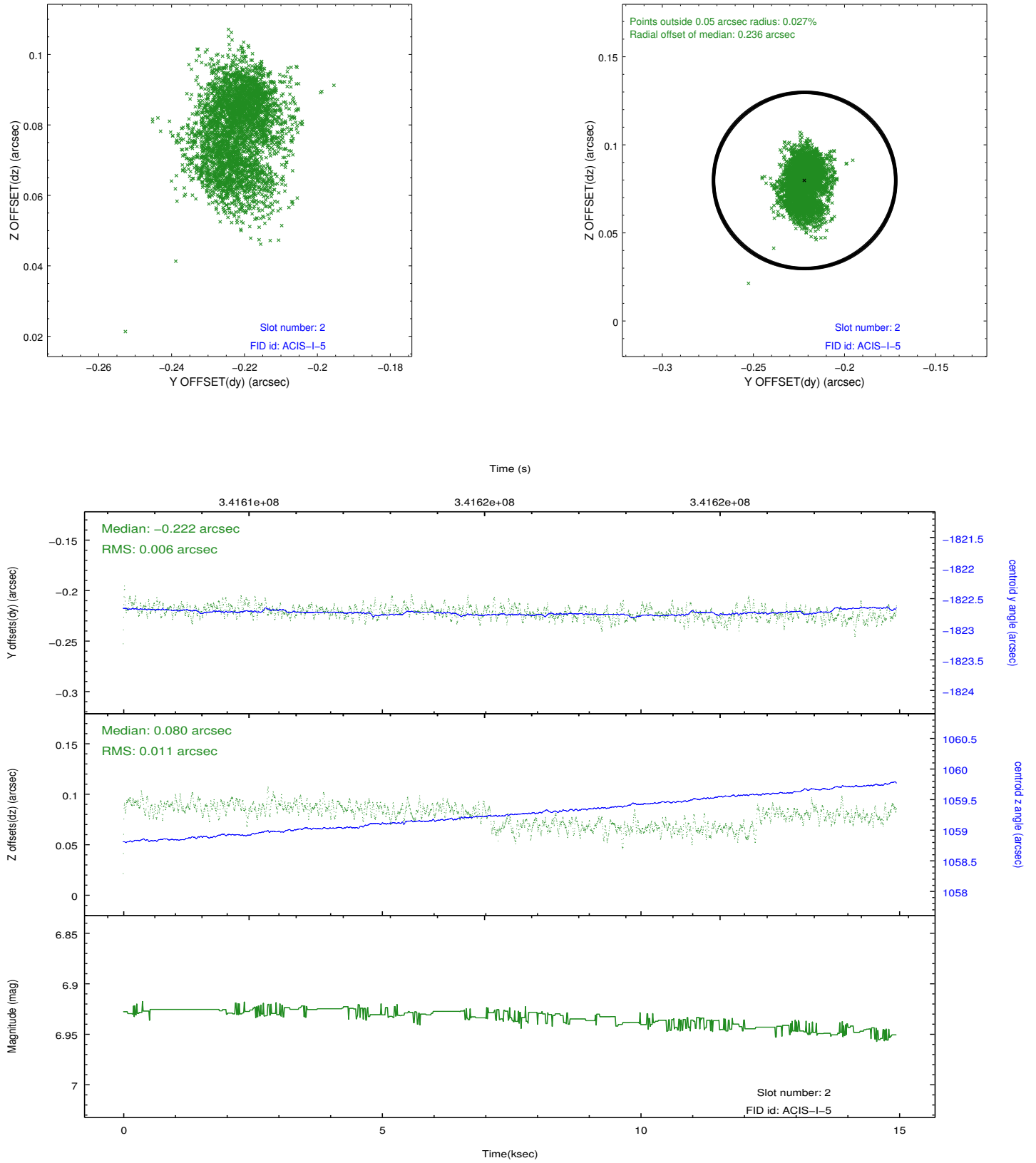
2.5.1 Slot 0



2.5.2 Slot 1



2.5.3 Slot 2



A Summary

A.1 Status

V&V Scientist	Joy Nichols
V&V Date (YYYY-MM-DD)	2012.06.01
V&V Edition	1
V&V Disposition and Status	OK
V&V Charge Time	14.9388591

A.2 Comments