

V&V Reference Report

L2 ASCDS Version : 8.4.4

Observation 10436 - L2 Version 3
Chandra X-Ray Center

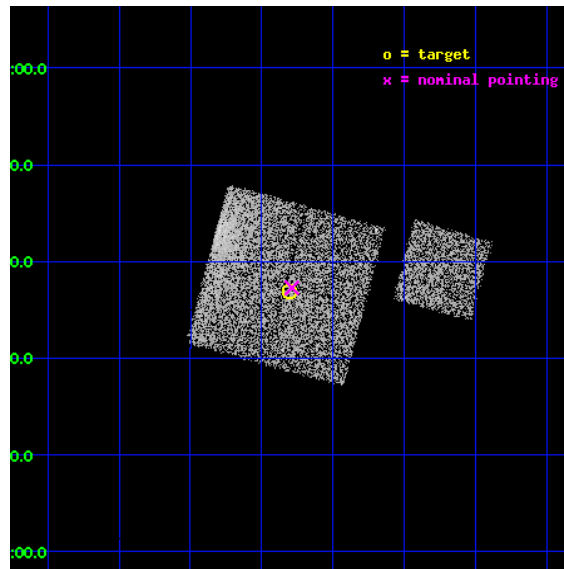
L2 Processing Date : Jun 4 2012

Contents

1	Front	2
2	OBI	3
2.1	OBI	3
2.1.1	Images	3
2.1.2	Bias	3
2.1.3	Parameters	4
2.1.4	Events	4
2.2	Compared Parameters	5
2.3	Aspect	6
2.4	Star Slots	9
2.4.1	Slot 3	9
2.4.2	Slot 5	10
2.4.3	Slot 6	11
2.4.4	Slot 7	12
2.5	FID Slots	13
2.5.1	Slot 0	13
2.5.2	Slot 1	14
2.5.3	Slot 2	15
A	Summary	16
A.1	Status	16
A.2	Comments	16

1 Front

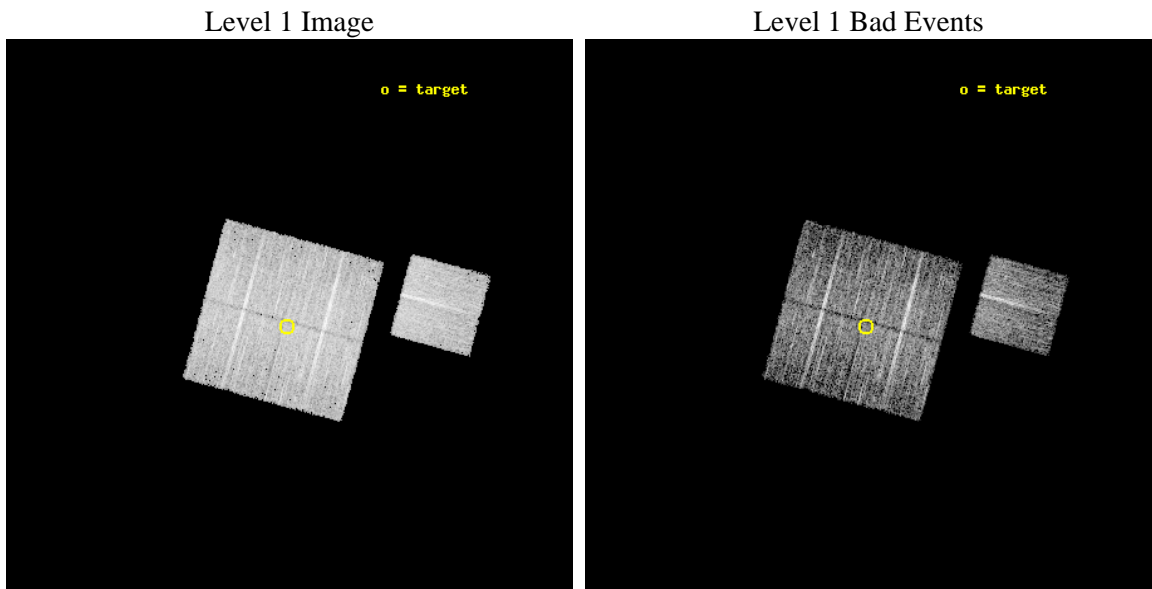
seq_num	800797	Sequence number
obs_id	10436	Observation id
title	A Chandra baseline for galaxy cluster evolution studies	Proposal t
observer	Dr Ben Maughan	Principal investigator
object	A2029	Source name
dtcycle	0	
cycle	P	events from which exps? Prim/Second/Both
ra_targ	227.57645	Observer's specified target RA [deg]
dec_targ	5.614546	Observer's specified target Dec [deg]
ra_nom	227.57213620139	Nominal RA [deg]
dec_nom	5.6213580416067	Nominal Dec [deg]
roll_nom	105.20904678051	Nominal Roll [deg]
revision	3	Processing version of data
ontime	4774.0000367165	Sum of GTIs [s]
livetime	4711.6242116691	Livetime [s]
ontime0	4767.718115747	Sum of GTIs [s]
ontime1	4774.0000367165	Sum of GTIs [s]
ontime2	4774.0000367165	Sum of GTIs [s]
ontime3	4774.0000367165	Sum of GTIs [s]
ontime6	4774.0000367165	Sum of GTIs [s]
l2events	22194	Number of level 2 events



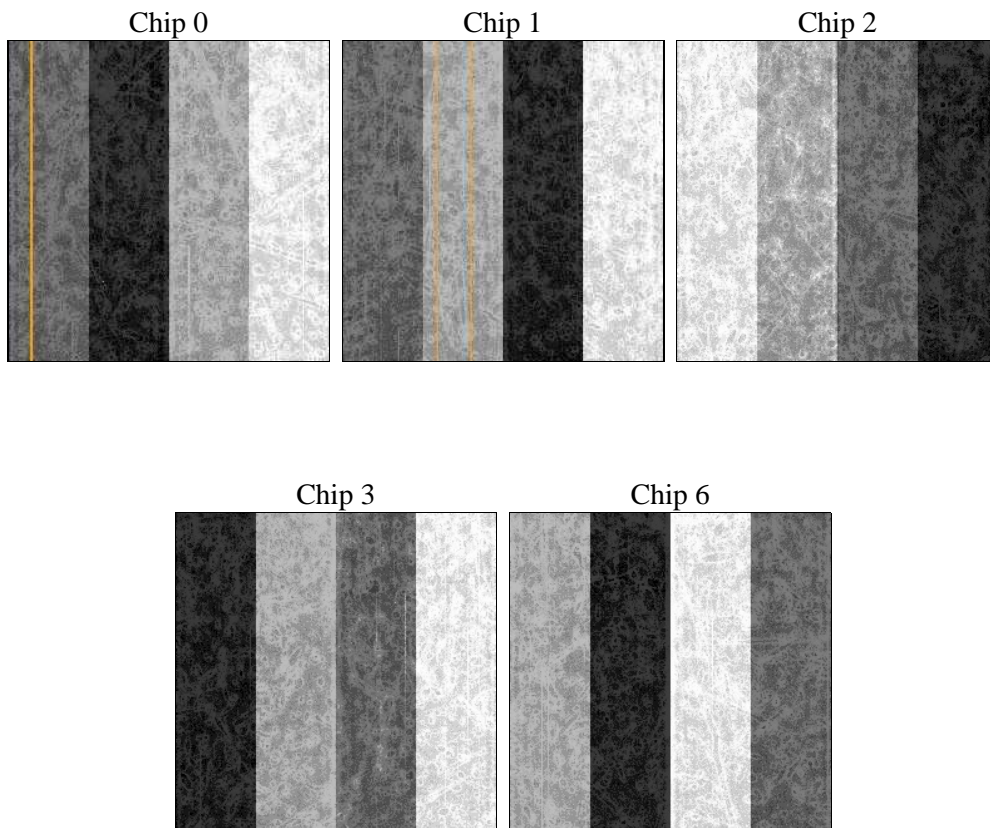
2 OBI

2.1 OBI

2.1.1 Images



2.1.2 Bias



2.1.3 Parameters

obi_num	0	Obi number	sched_exp_time	5000.000000	[s] Scheduled observation exposure time
ascdsver	8.4.4	Processing system revision	ontime	4774.0000367165	Sum of GTIs [s]
caldsver	4.4.9	 	ontime0	4767.718115747	Sum of GTIs [s]
date	2012-06-04T17:33:18	Date and time of file creation	ontime1	4774.0000367165	Sum of GTIs [s]
revision	3	Processing version of data	ontime2	4774.0000367165	Sum of GTIs [s]
			ontime3	4774.0000367165	Sum of GTIs [s]
			ontime6	4774.0000367165	Sum of GTIs [s]
			l1events	212384	Number of level 1 events

2.1.4 Events

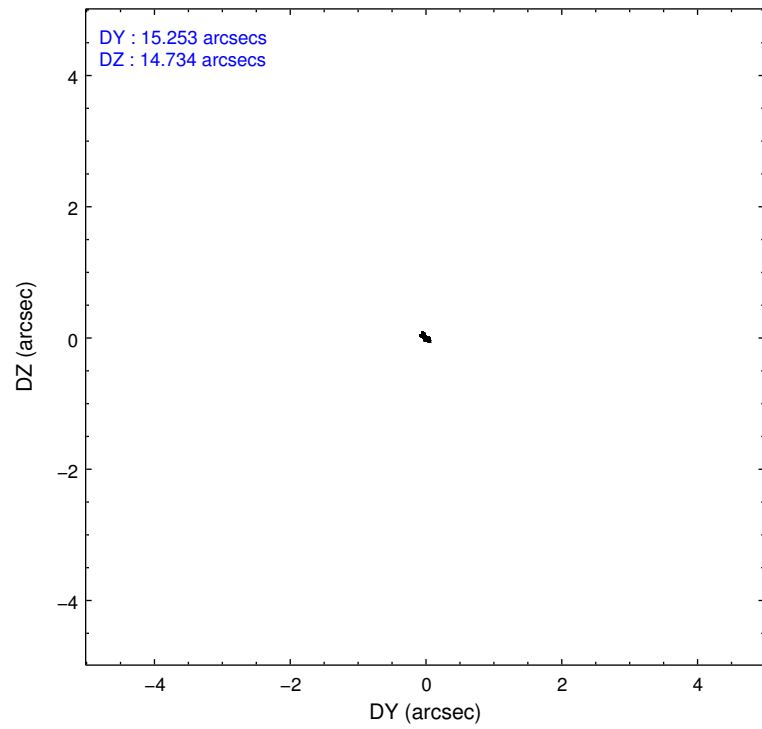
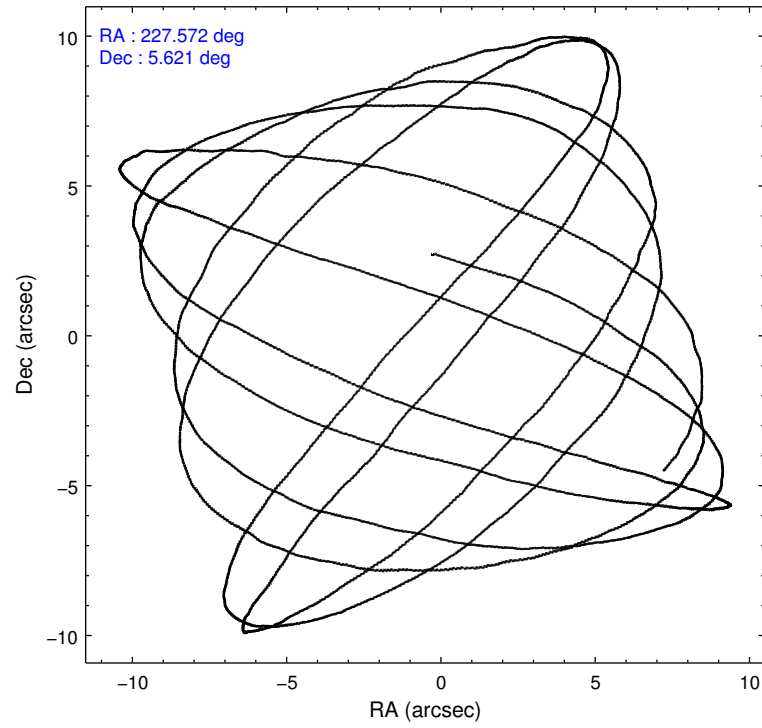
	ccd 0	ccd 1	ccd 2	ccd 3	ccd 6
level 1 events	41791	40030	44089	43093	43381
rejected events	34251	34478	39581	38838	38932
rejected %	81%	86%	89%	90%	89%

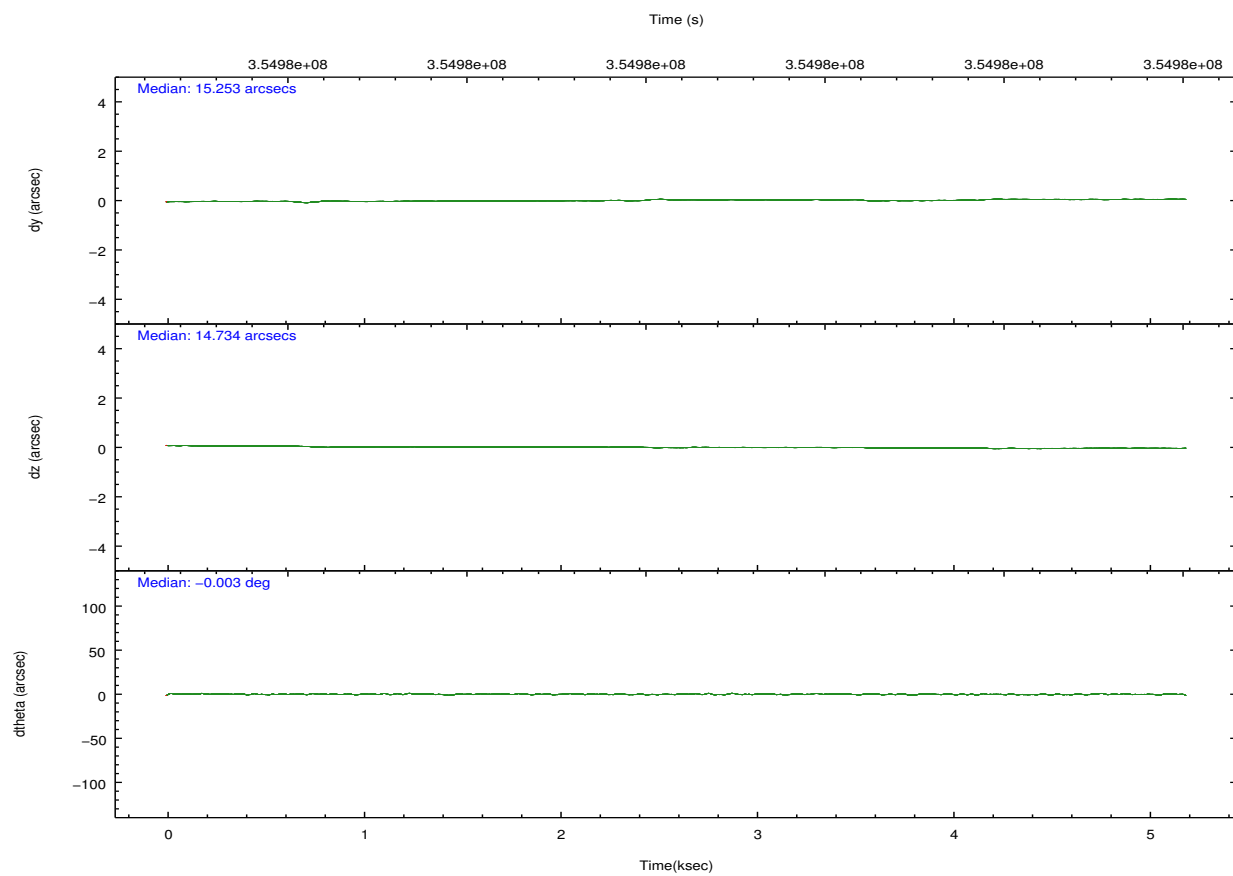
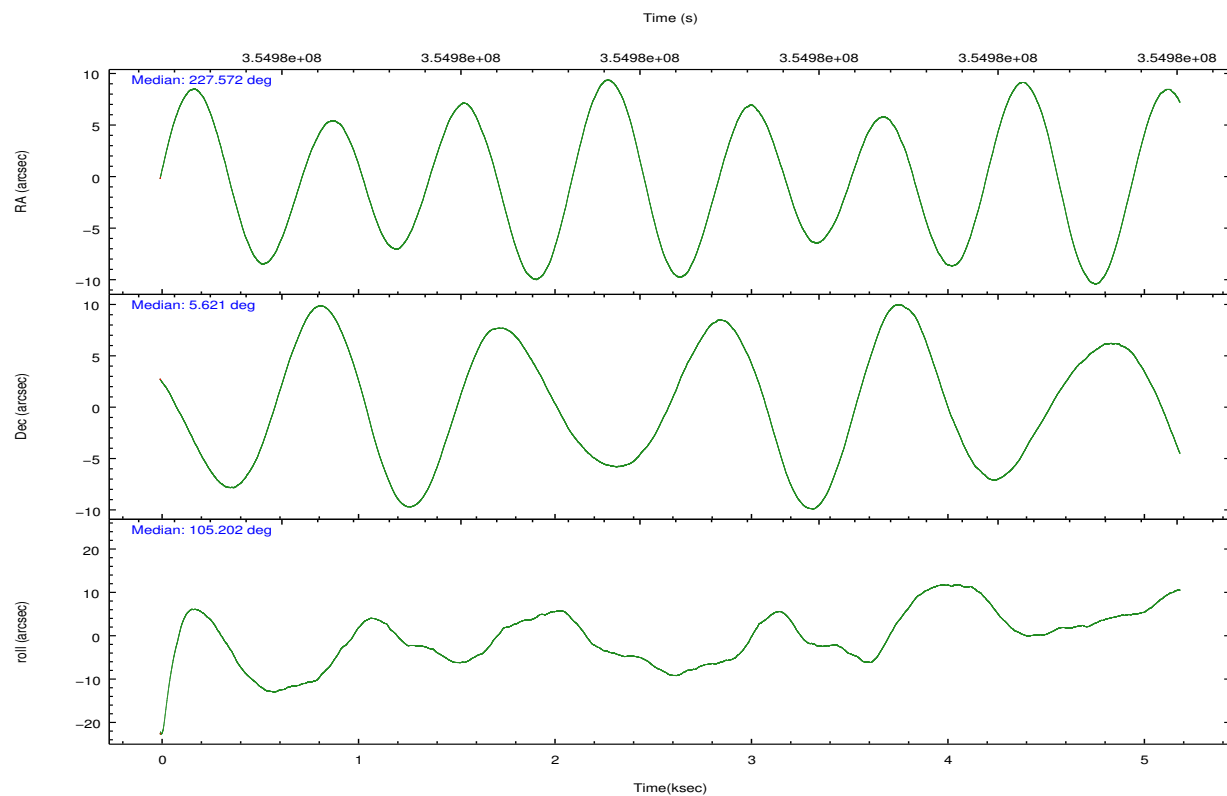
	ccd 0	ccd 1	ccd 2	ccd 3	ccd 6
grade 0 events	4058	2305	1766	1625	1628
	9%	5%	4%	3%	3%
grade 1 events	44	38	24	24	28
	0%	0%	0%	0%	0%
grade 2 events	1393	1138	1001	884	956
	3%	2%	2%	2%	2%
grade 3 events	574	558	453	438	471
	1%	1%	1%	1%	1%
grade 4 events	589	515	448	460	472
	1%	1%	1%	1%	1%
grade 5 events	1595	1623	1426	1714	1618
	3%	4%	3%	3%	3%
grade 6 events	939	1043	852	858	926
	2%	2%	1%	1%	2%
grade 7 events	32599	32810	38119	37090	37282
	78%	81%	86%	86%	85%

2.2 Compared Parameters

Parameter	Planned	Actual	Parameter	Planned	Actual
Instrument	ACIS	ACIS	Obspar format version number	7	7
Detector	ACIS-01236	ACIS-01236	Obspar file type	PREDICTED	ACTUAL
Grating	NONE	NONE	Obspar update status	NONE	UPDATED
Data mode	VFAINT	VFAINT	CCD I0 on	Y	Y
Observation mode	POINTING	POINTING	CCD I1 on	Y	Y
[deg] Pointing RA	227.591772	227.5721362013927	CCD I2 on	Y	Y
[deg] Pointing Dec	5.602075	5.621358041606696	CCD I3 on	Y	Y
[deg] Pointing Roll	104.998506	105.2090467805073	CCD S0 on	N	N
[mm] SIM focus pos	-0.782348	-0.7809083437167272	CCD S1 on	N	N
[mm] SIM defocus	0	0.001439871863259334	CCD S2 on	O1	Y
[mm] SIM translation stage pos	-233.592463	-233.5874344608287	CCD S3 on	N	N
[mm] SIM translation stage offset	0	-0.005018542100998502	CCD S4 on	N	N
[s] Observation start time (MET)	354976758.184000	354976373.66054	CCD S5 on	N	N
Observation start date	2009-04-01T12:38:12	2009-04-01T12:32:53	Number of optional ACIS chips dropped	0	0
[s] Observation end time (MET)	354981758.184000	354981971.18582	On-chip summing requested	N	N
Observation end date	2009-04-01T14:01:32	2009-04-01T14:06:11	Subarray requested	NONE	NONE
Read mode	TIMED	TIMED	Alternating exposures requested	N	N
			[s] Primary exposure time	0.000000	3.1

2.3 Aspect



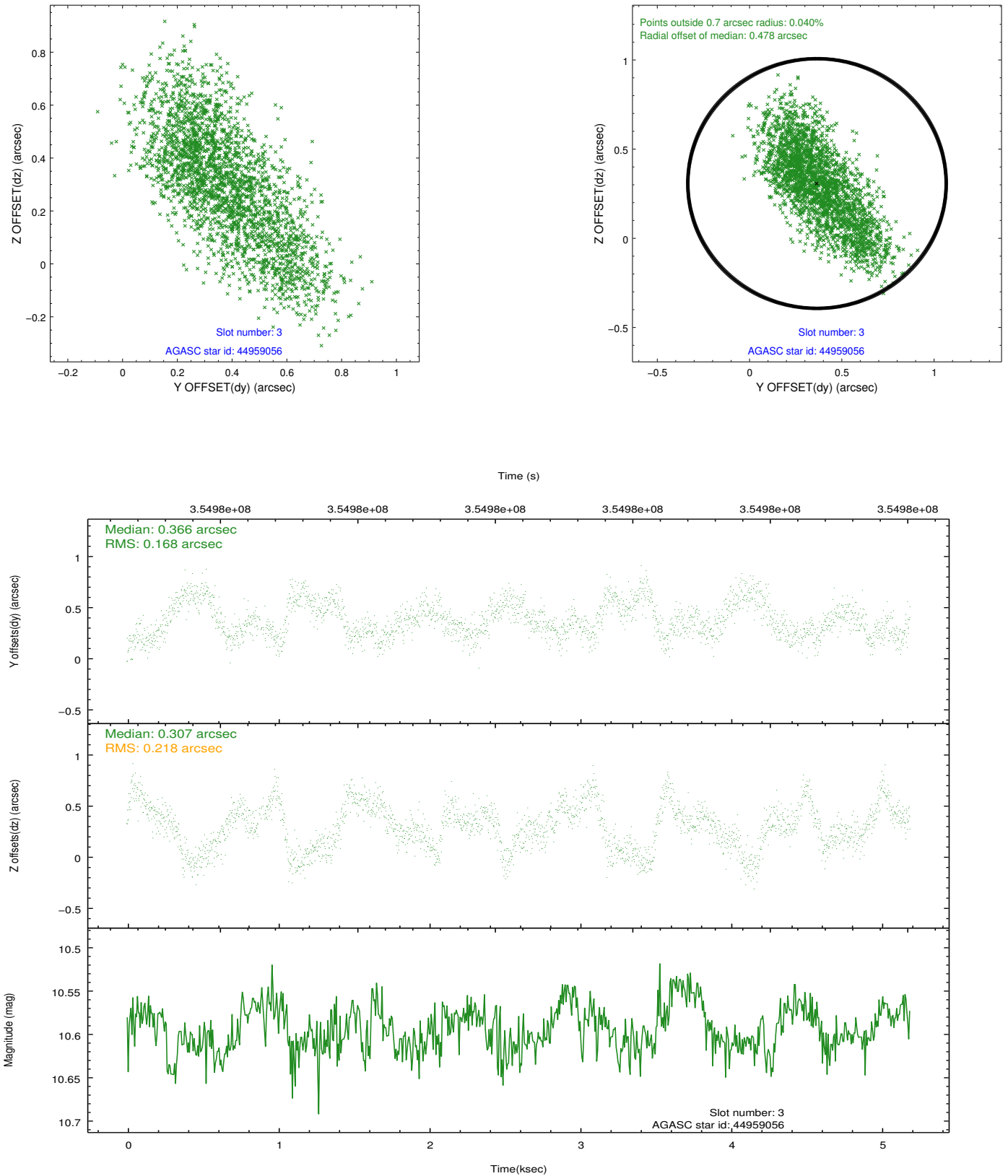


Slot Statistics

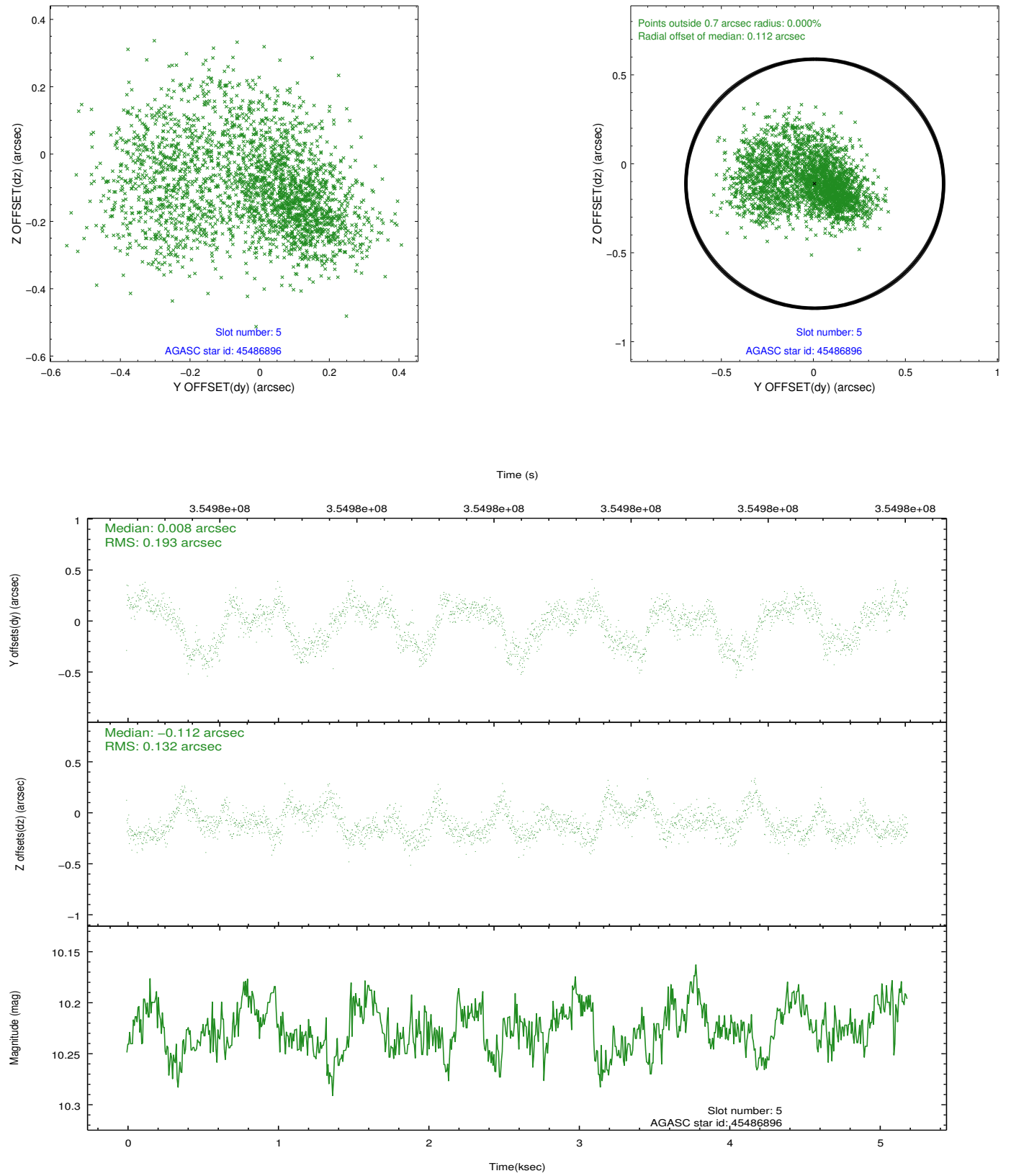
slot	status	id	mag	n_pts	med_dy	med_dz	dr1	dr2	ra	dec	mean_y	mean_z
0	FID	ACIS-I-1	7.00	1267	0.008	0.035	0.015	0.021	0.000000	0.000000	924.22	-838.28
1	FID	ACIS-I-5	6.99	1267	-0.188	0.025	0.011	0.017	0.000000	0.000000	-1823.47	1058.58
2	FID	ACIS-I-6	6.99	1267	0.089	0.012	0.010	0.015	0.000000	0.000000	388.54	1704.42
3	GUIDE	44959056	10.60	2508	0.366	0.307	0.293	0.490	227.388506	5.331015	-753.71	956.56
4	OMITTED		0.00	0	0.000	0.000	0.000	0.000	0.000000	0.000000	0.00	0.00
5	GUIDE	45486896	10.22	2530	0.008	-0.112	0.251	0.403	227.000545	5.964623	1809.11	1707.22
6	GUIDE	45488080	9.53	2530	-0.256	0.010	0.125	0.201	226.925531	5.883747	1598.51	2042.64
7	GUIDE	44966344	6.10	2530	-0.091	-0.210	0.133	0.201	226.918015	5.498039	264.64	2429.25

2.4 Star Slots

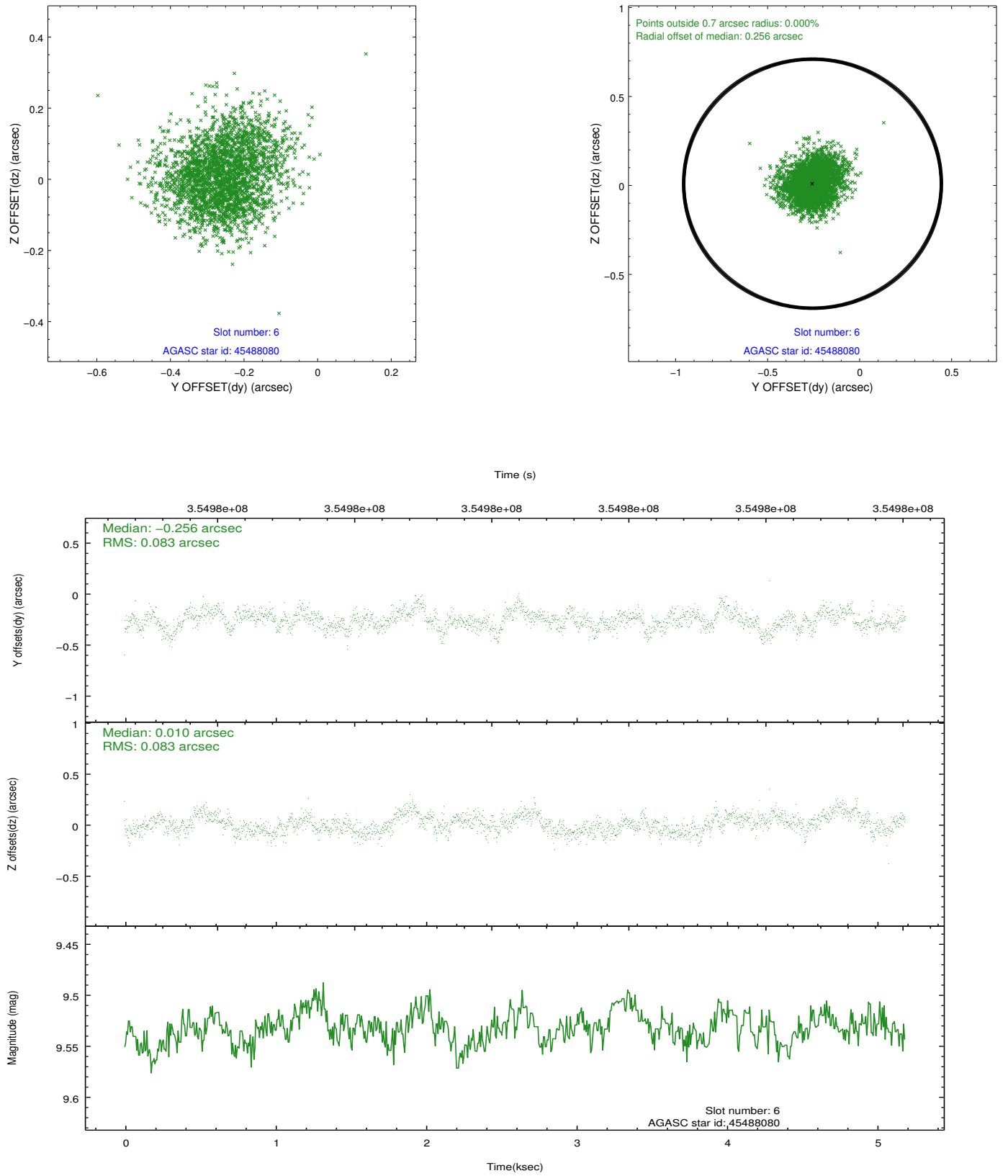
2.4.1 Slot 3



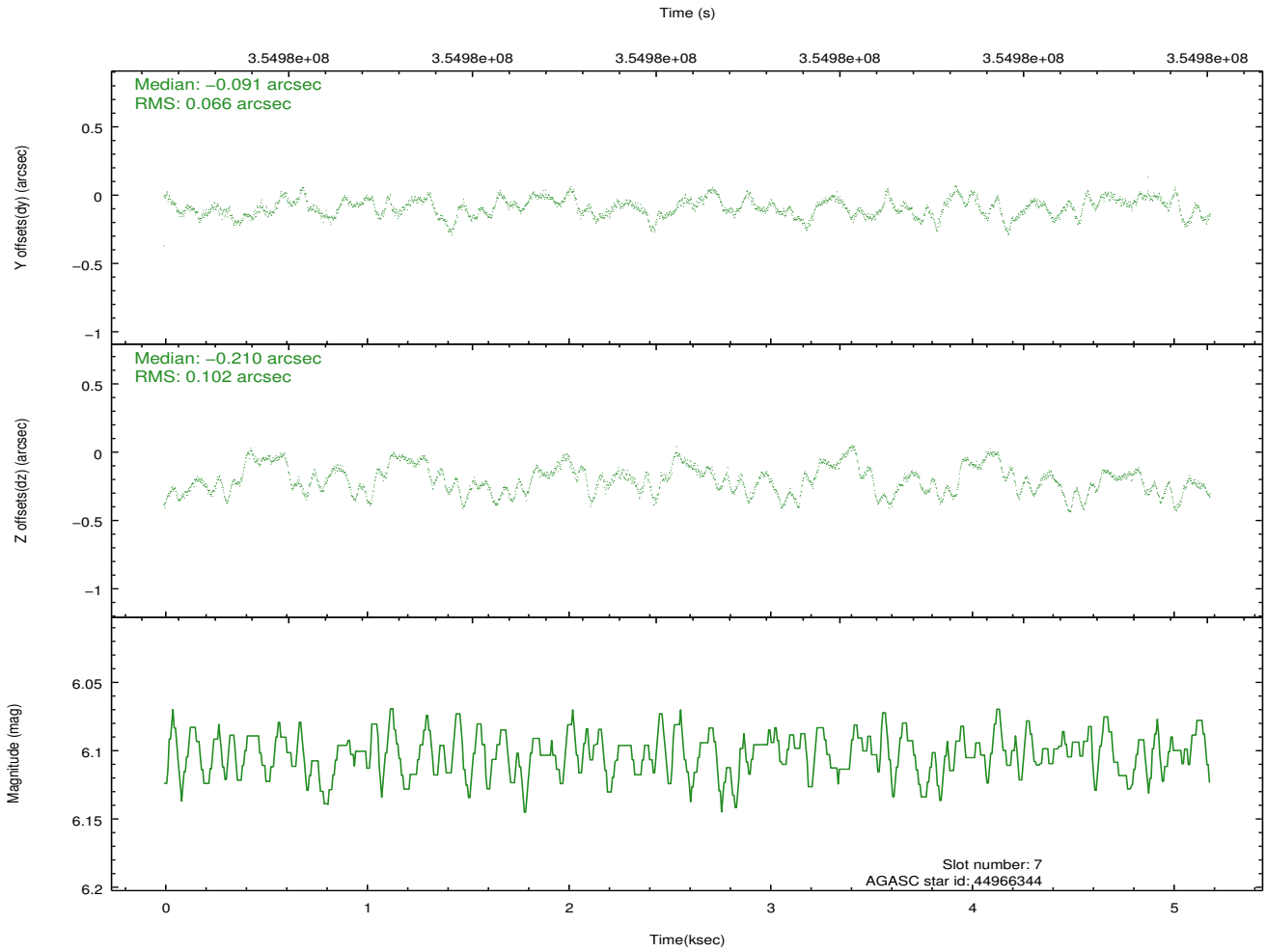
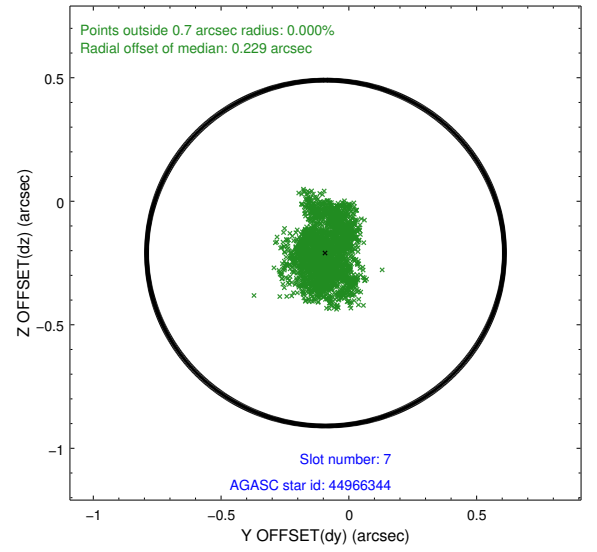
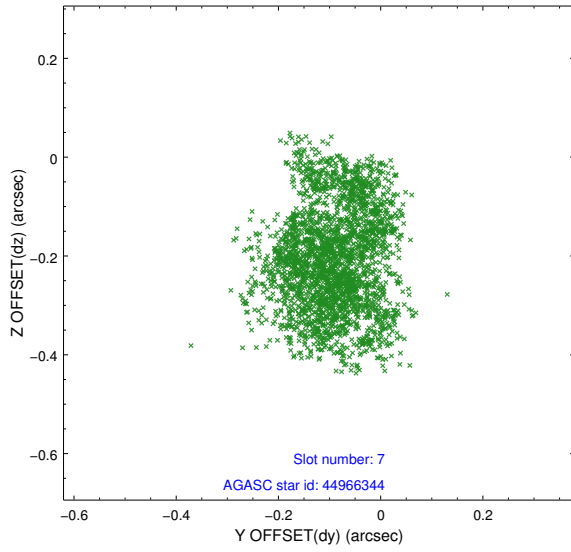
2.4.2 Slot 5



2.4.3 Slot 6

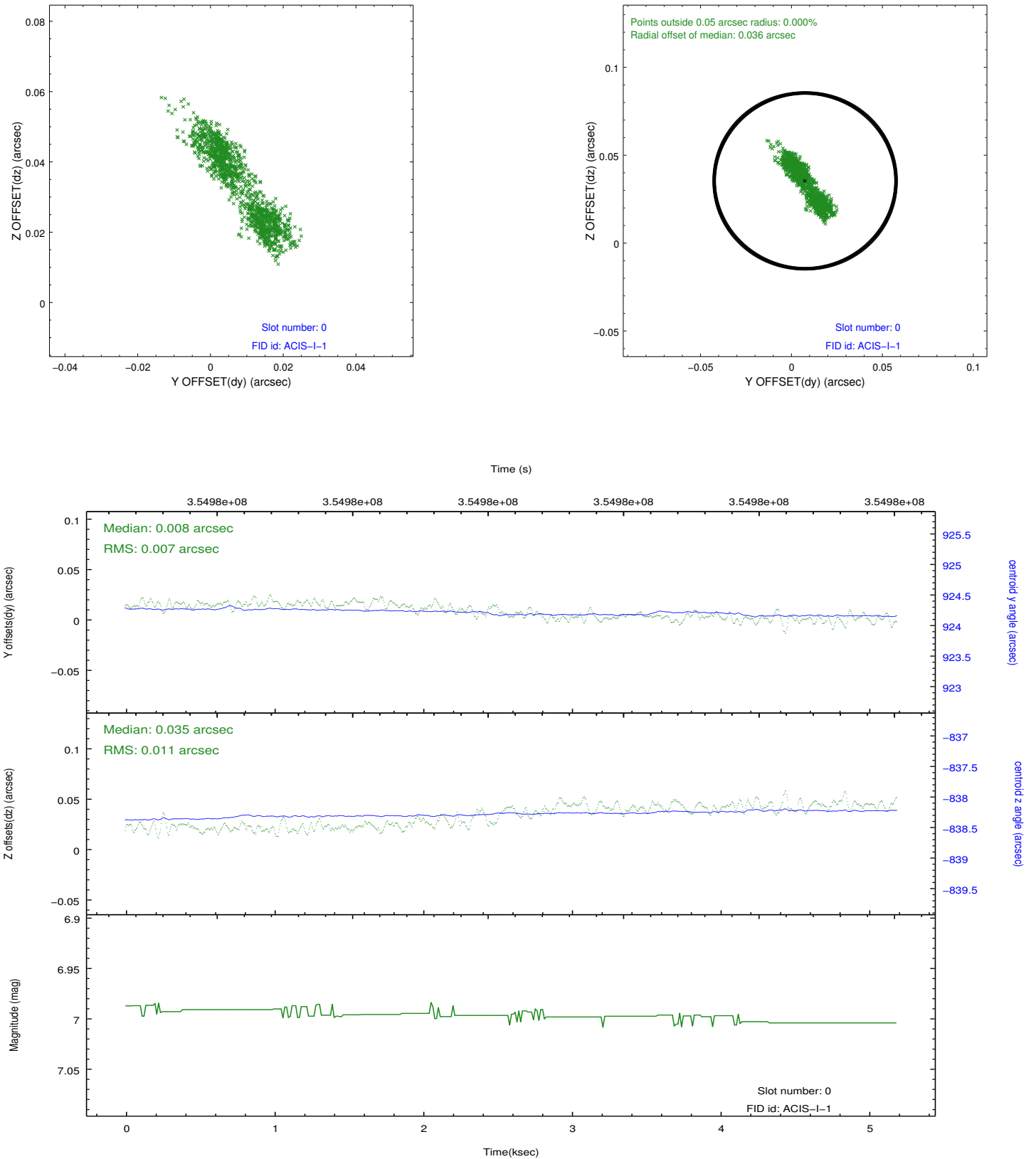


2.4.4 Slot 7

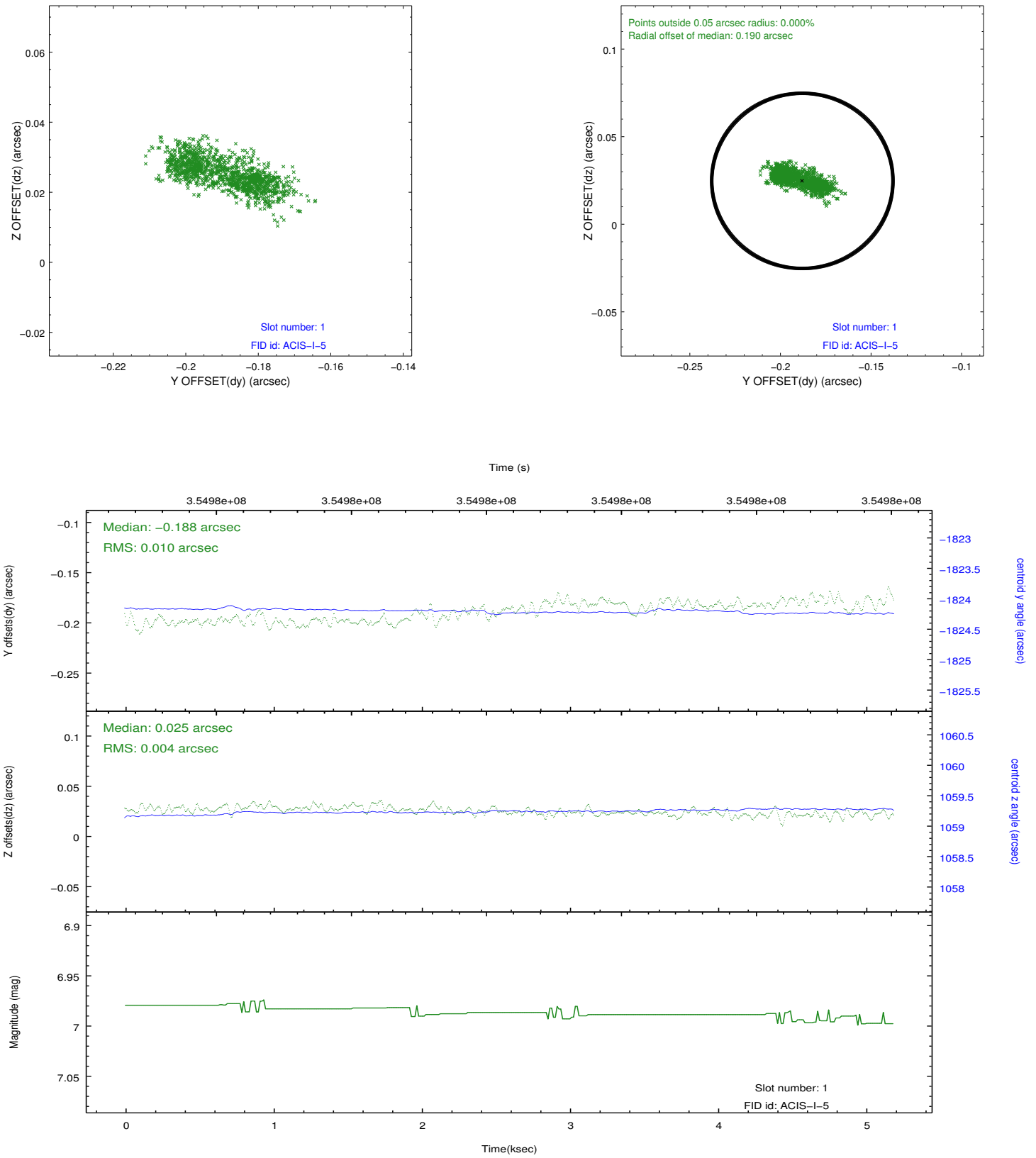


2.5 FID Slots

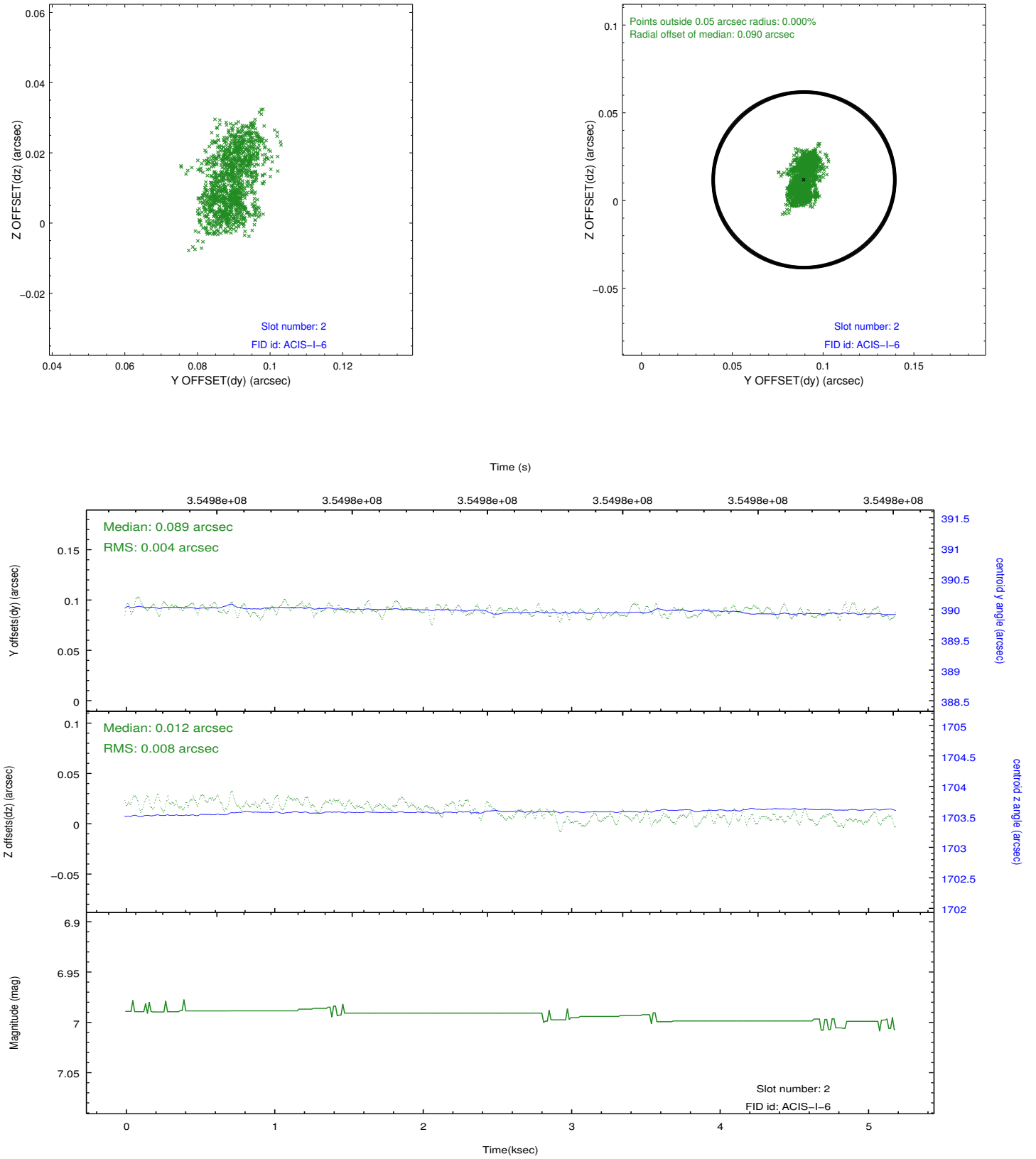
2.5.1 Slot 0



2.5.2 Slot 1



2.5.3 Slot 2



A Summary

A.1 Status

V&V Scientist	Jen Lauer
V&V Date (YYYY-MM-DD)	2012.06.07
V&V Edition	1
V&V Disposition and Status	OK
V&V Charge Time	4.77400003

A.2 Comments

The guide star in slot 4 was removed from the aspect solution due to poor data quality. The aspect solution is improved by the removal of this guide star from the solution.