

# V&V Reference Report

## L2 ASCDS Version : 8.4.4

Observation 10348 - L2 Version 2  
Chandra X-Ray Center

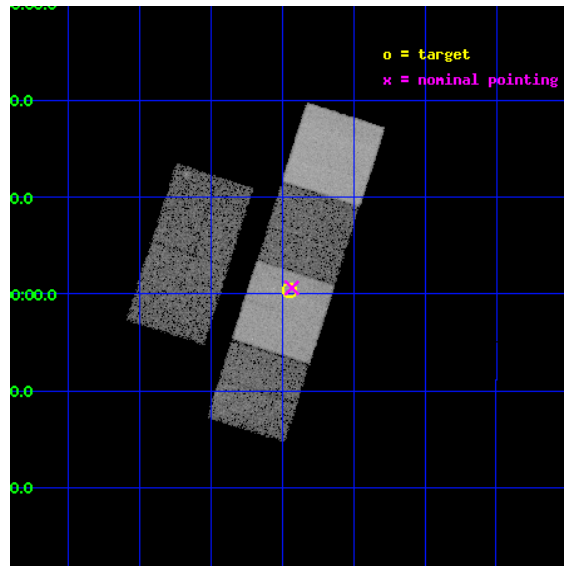
L2 Processing Date : Jun 4 2012

## Contents

<b>1</b>	<b>Front</b>	<b>2</b>
<b>2</b>	<b>OBI</b>	<b>3</b>
2.1	OBI . . . . .	3
2.1.1	Images . . . . .	3
2.1.2	Bias . . . . .	3
2.1.3	Parameters . . . . .	4
2.1.4	Events . . . . .	4
2.2	Compared Parameters . . . . .	5
2.3	Aspect . . . . .	6
2.4	Star Slots . . . . .	9
2.4.1	Slot 3 . . . . .	9
2.4.2	Slot 4 . . . . .	10
2.4.3	Slot 5 . . . . .	11
2.4.4	Slot 6 . . . . .	12
2.4.5	Slot 7 . . . . .	13
2.5	FID Slots . . . . .	14
2.5.1	Slot 0 . . . . .	14
2.5.2	Slot 1 . . . . .	15
2.5.3	Slot 2 . . . . .	16
<b>A</b>	<b>Summary</b>	<b>17</b>
A.1	Status . . . . .	17
A.2	Comments . . . . .	17

# 1 Front

seq_num	701891	Sequence number
obs_id	10348	Observation id
title	Evolution of Activity in Massive Gas-rich Mergers: The X-ray Perspective	Proposal title
observer	Prof. Sylvain Veilleux	Principal investigator
object	F15462-0450	Source name
dtcycle	0	&#160
cycle	P	events from which exps? Prim/Second/Both
ra_targ	237.236667	Observer's specified target RA [deg]
dec_targ	-4.992694	Observer's specified target Dec [deg]
ra_nom	237.23293625521	Nominal RA [deg]
dec_nom	-4.9895350817678	Nominal Dec [deg]
roll_nom	107.81816354975	Nominal Roll [deg]
revision	2	Processing version of data
ontime	15161.599943578	Sum of GTIs [s]
livetime	14969.614635873	Livetime [s]
ontime2	15161.599943578	Sum of GTIs [s]
ontime3	15161.599943578	Sum of GTIs [s]
ontime5	15161.599943578	Sum of GTIs [s]
ontime6	15161.599943578	Sum of GTIs [s]
ontime7	15161.599943578	Sum of GTIs [s]
ontime8	15158.35893333	Sum of GTIs [s]
l2events	178474	Number of level 2 events

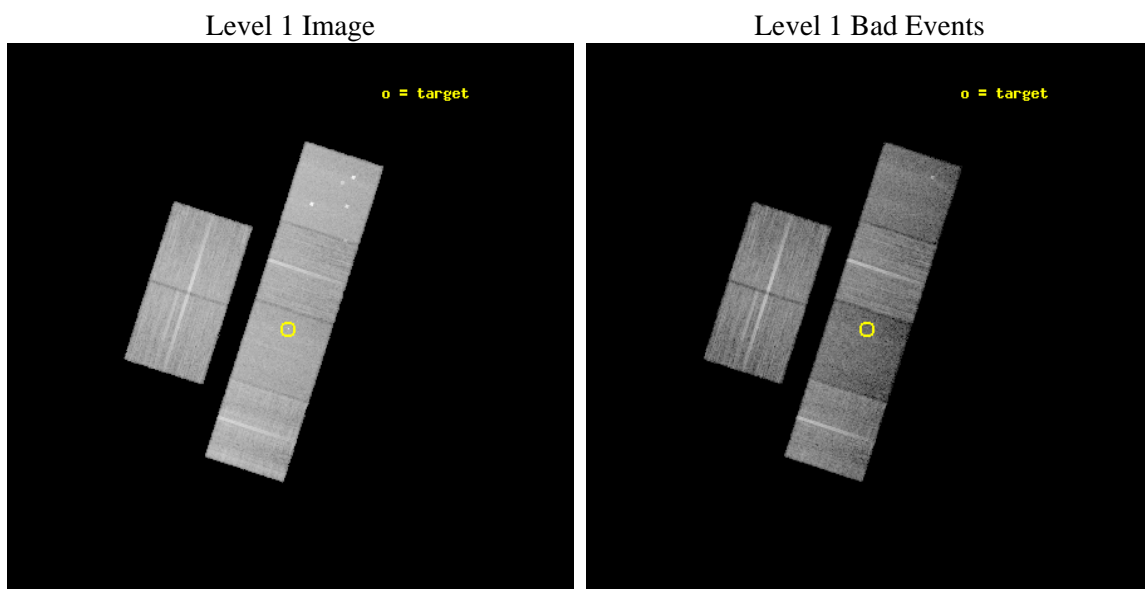




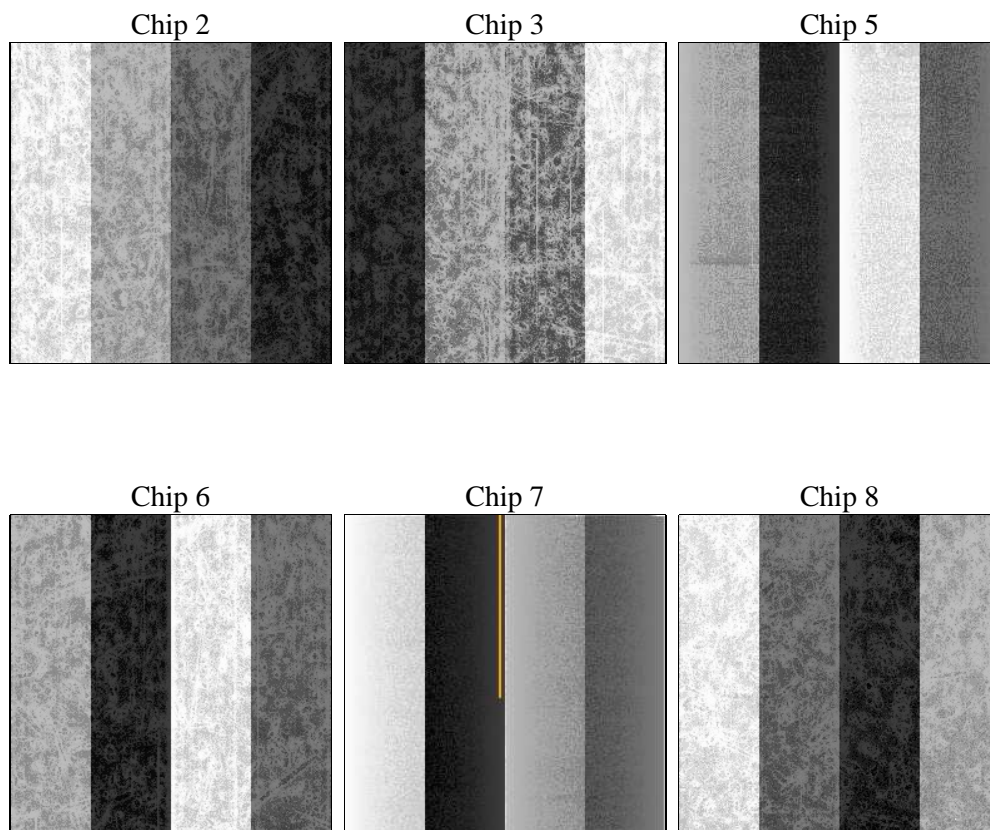
## 2 OBI

### 2.1 OBI

#### 2.1.1 Images



#### 2.1.2 Bias



### 2.1.3 Parameters

obi_num	0	Obi number	sched_exp_time	15002.324000	[s] Scheduled observation exposure time
ascdsver	8.4.4	Processing system revision	ontime	15161.599943578	Sum of GTIs [s]
caldsver	4.4.9	&#160	ontime2	15161.599943578	Sum of GTIs [s]
date	2012-06-04T16:58:57	Date and time of file creation	ontime3	15161.599943578	Sum of GTIs [s]
revision	2	Processing version of data	ontime5	15161.599943578	Sum of GTIs [s]
			ontime6	15161.599943578	Sum of GTIs [s]
			ontime7	15161.599943578	Sum of GTIs [s]
			ontime8	15158.35893333	Sum of GTIs [s]
			l1events	819465	Number of level 1 events

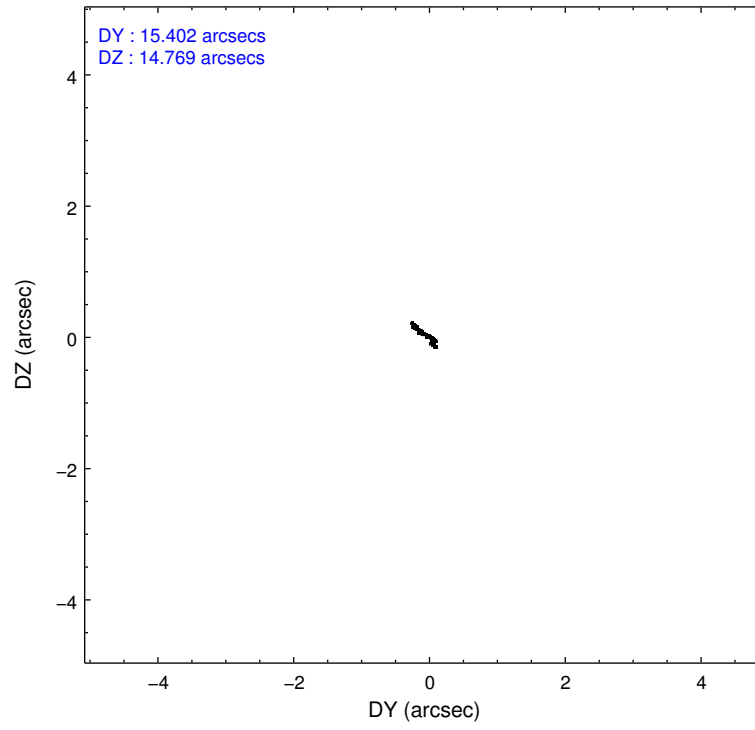
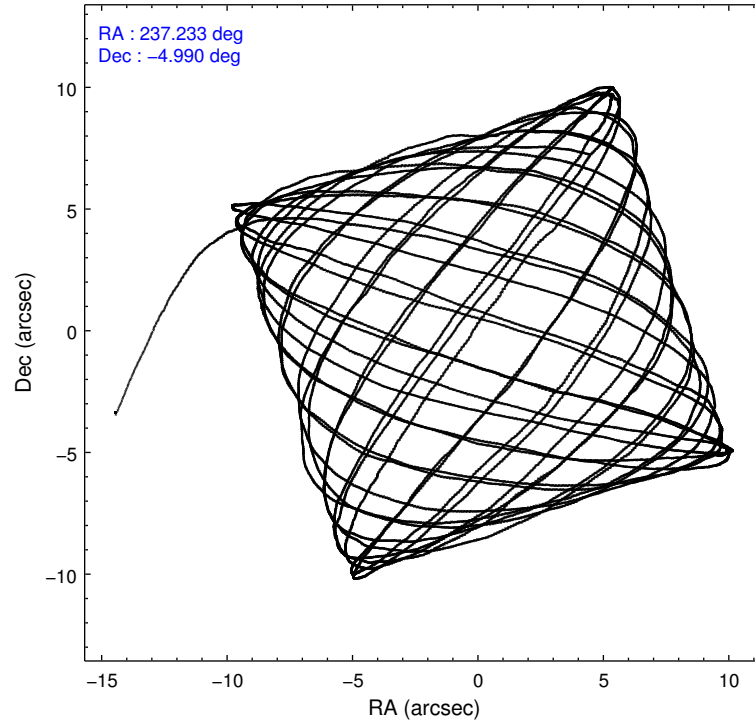
### 2.1.4 Events

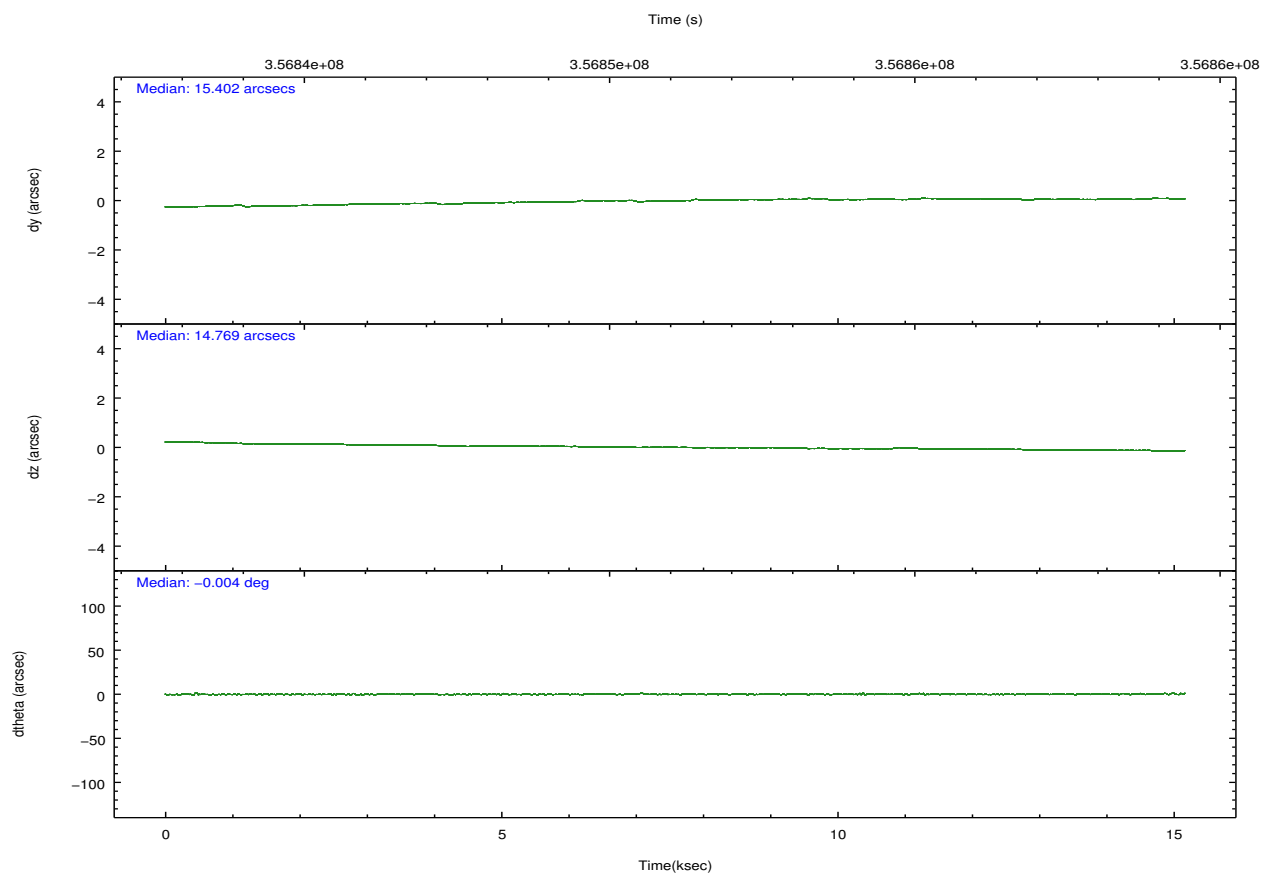
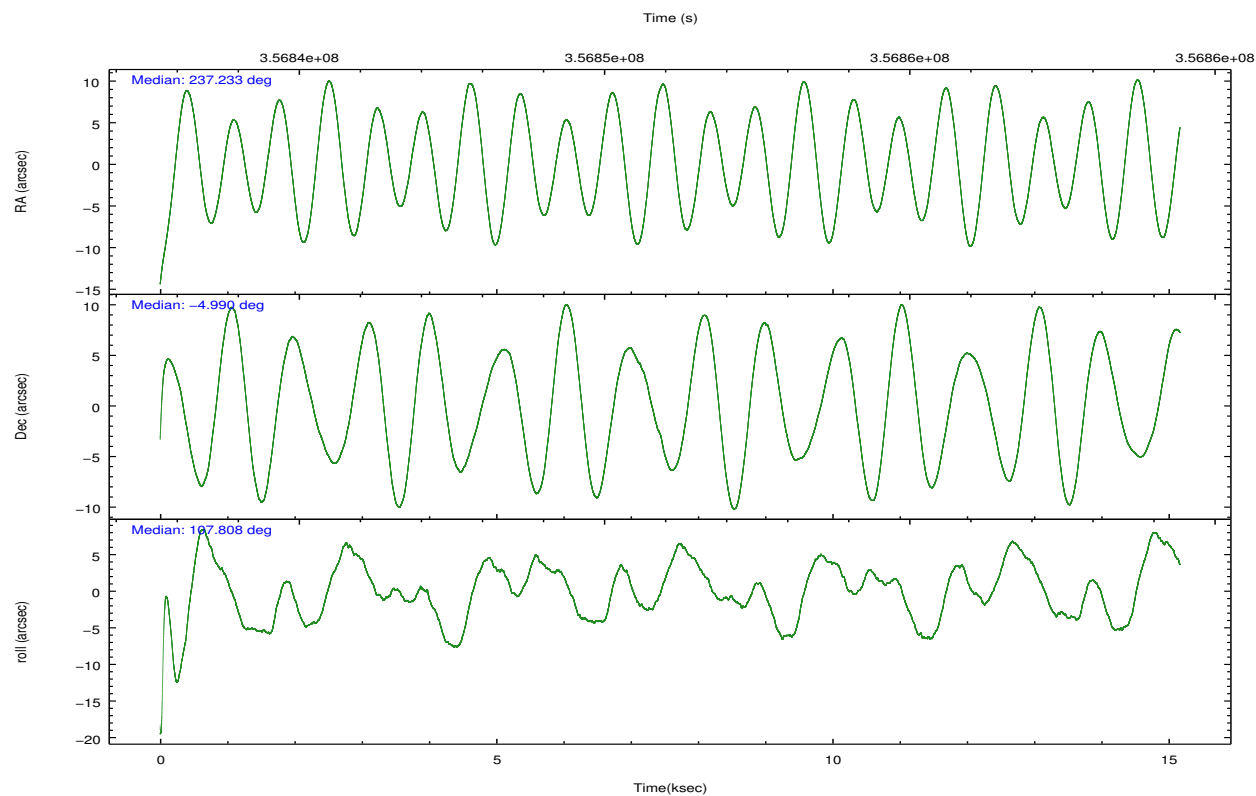
	ccd 2	ccd 3	ccd 5	ccd 6	ccd 7	ccd 8		ccd 2	ccd 3	ccd 5	ccd 6	ccd 7	ccd 8
level 1 events	134961	122733	161515	124796	122869	152591	grade 0 events	4769	4116	11187	4735	6229	10953
rejected events	122720	111472	75561	112135	62775	113840		3%	3%	6%	3%	5%	7%
rejected %	90%	90%	46%	89%	51%	74%	grade 1 events	88	78	368	76	223	128
								0%	0%	0%	0%	0%	0%
							grade 2 events	2921	2500	26148	2811	13069	9387
								2%	2%	16%	2%	10%	6%
							grade 3 events	1247	1348	3776	1380	5538	4394
								0%	1%	2%	1%	4%	2%
							grade 4 events	1297	1221	3437	1295	5470	3892
								0%	0%	2%	1%	4%	2%
							grade 5 events	3657	4313	12771	4315	13013	6406
								2%	3%	7%	3%	10%	4%
							grade 6 events	2125	2168	42188	2564	30265	10375
								1%	1%	26%	2%	24%	6%
							grade 7 events	118857	106989	61640	107620	49062	107056
								88%	87%	38%	86%	39%	70%

## 2.2 Compared Parameters

Parameter	Planned	Actual	Parameter	Planned	Actual
Instrument	ACIS	ACIS	Obspar format version number	7	7
Detector	ACIS-235678	ACIS-235678	Obspar file type	PREDICTED	ACTUAL
Grating	NONE	NONE	Obspar update status	NONE	UPDATED
Data mode	VFAINT	VFAINT	CCD I0 on	N	N
Observation mode	POINTING	POINTING	CCD I1 on	N	N
[deg] Pointing RA	237.253557	237.2329362552133	CCD I2 on	O1	Y
[deg] Pointing Dec	-5.007621	-4.989535081767759	CCD I3 on	O2	Y
[deg] Pointing Roll	107.663354	107.8181635497506	CCD S0 on	N	N
[mm] SIM focus pos	-0.684267	-0.6828225247311905	CCD S1 on	O3	Y
[mm] SIM defocus	0	0.001444936568705701	CCD S2 on	O4	Y
[mm] SIM translation stage pos	-190.132523	-190.145094680475	CCD S3 on	Y	Y
[mm] SIM translation stage offset	0	0.01257209746719923	CCD S4 on	O5	Y
[s] Observation start time (MET)	356843647.184000	356842513.86591	CCD S5 on	N	N
Observation start date	2009-04-23T03:13:01	2009-04-23T02:55:13	Number of optional ACIS chips dropped	0	0
[s] Observation end time (MET)	356858649.184000	356858873.89173	On-chip summing requested	N	N
Observation end date	2009-04-23T07:23:03	2009-04-23T07:27:53	Subarray requested	NONE	NONE
Read mode	TIMED	TIMED	Alternating exposures requested	N	N
			[s] Primary exposure time	0.000000	3.2

## 2.3 Aspect



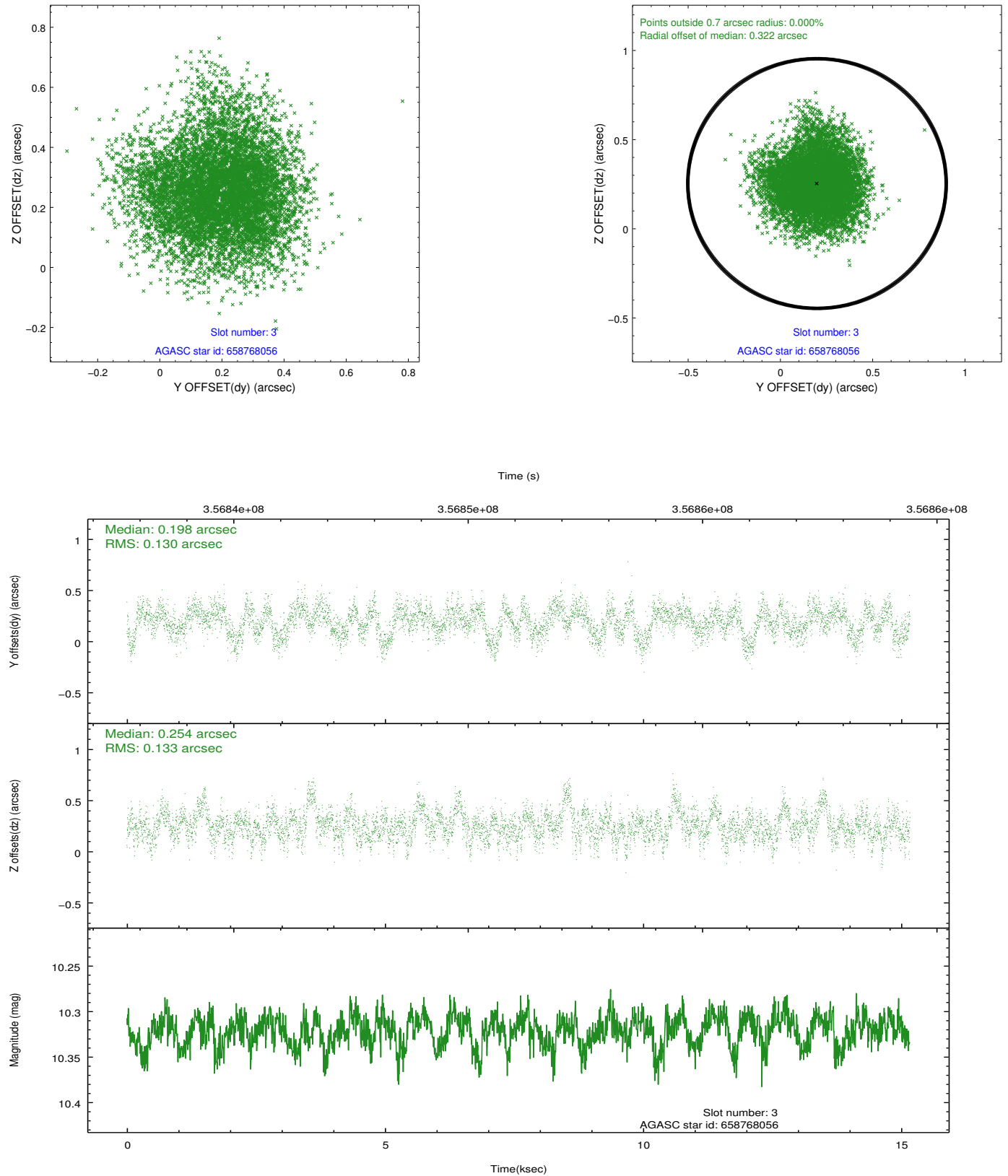


### Slot Statistics

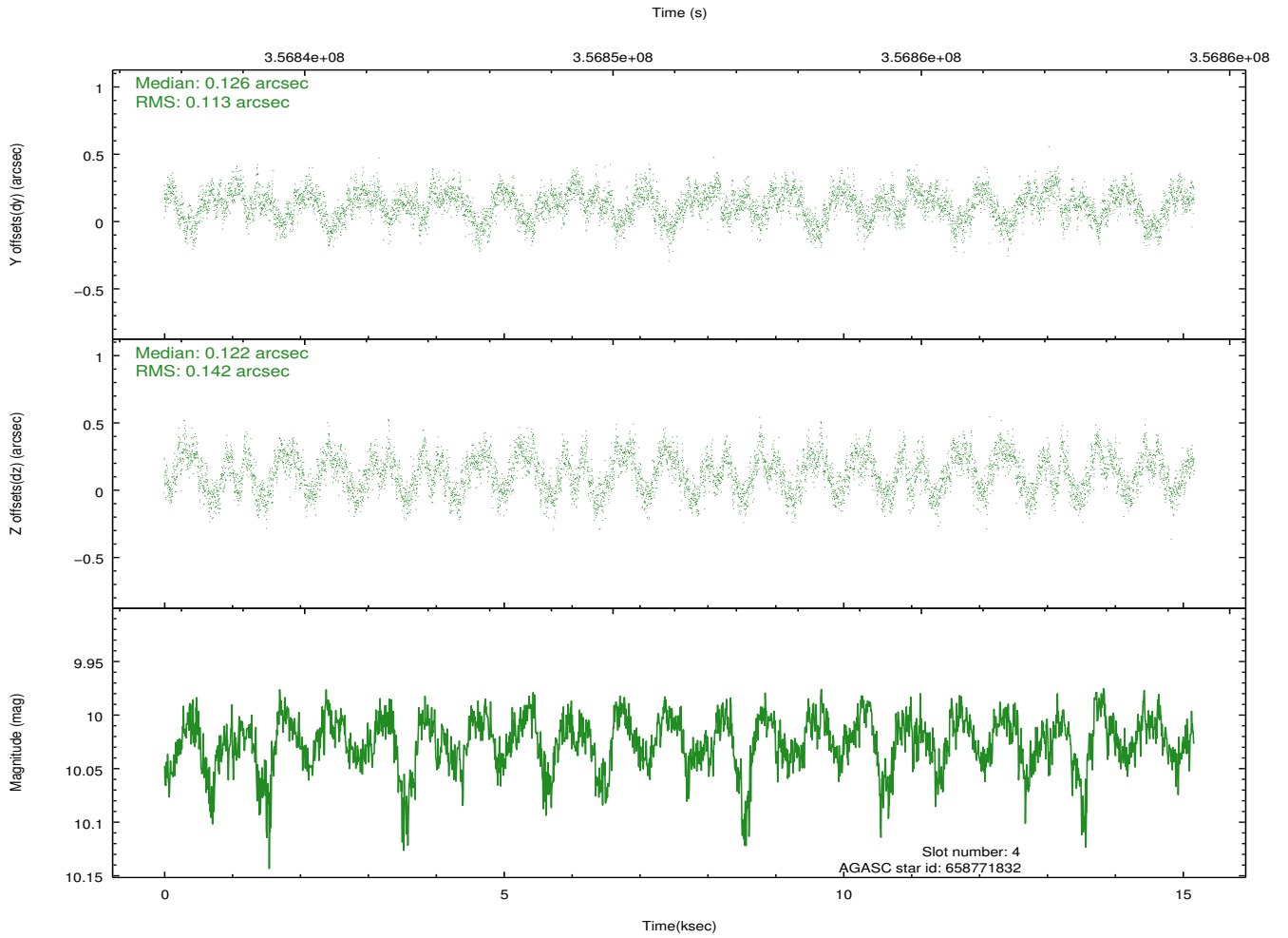
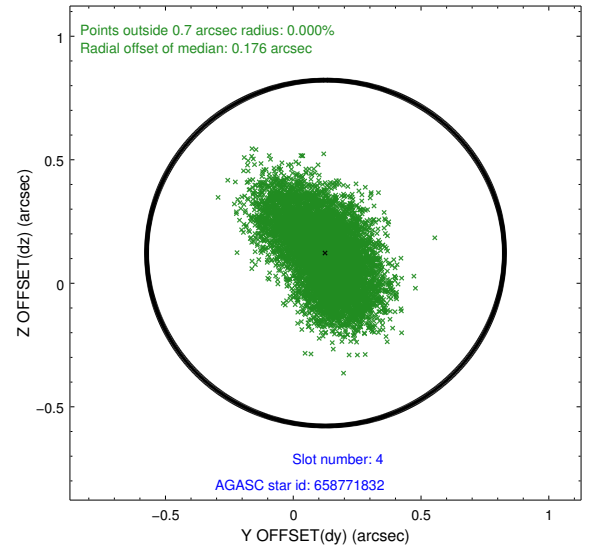
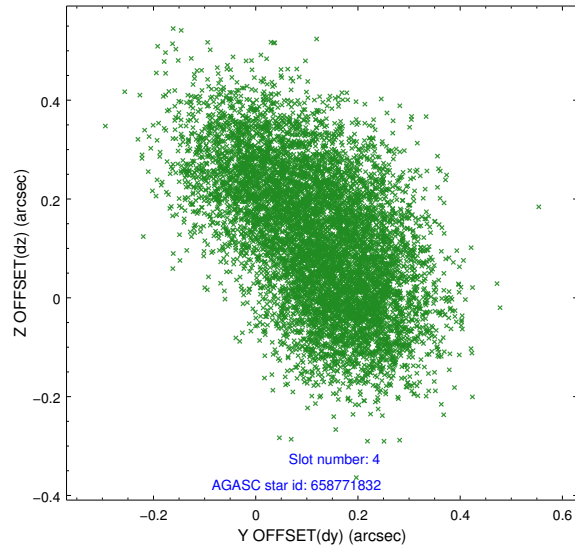
slot	status	id	mag	n_pts	med_dy	med_dz	dr1	dr2	ra	dec	mean_y	mean_z
0	FID	ACIS-S-2	6.91	3700	-0.093	-0.023	0.006	0.011	0.000000	0.000000	-768.43	-1736.08
1	FID	ACIS-S-4	7.00	3700	0.183	0.051	0.006	0.011	0.000000	0.000000	2144.98	172.18
2	FID	ACIS-S-5	7.03	3700	-0.121	-0.019	0.007	0.011	0.000000	0.000000	-1820.93	166.10
3	GUIDE	658768056	10.32	7384	0.198	0.254	0.199	0.317	237.503993	-5.087787	-547.23	-767.79
4	GUIDE	658771832	10.02	7389	0.126	0.122	0.196	0.305	236.711612	-5.256531	-264.63	2124.40
5	GUIDE	658773448	7.76	7400	-0.133	-0.171	0.076	0.124	236.695041	-5.045362	477.15	1950.04
6	BAD	658773552	10.89	7078	-0.107	-0.149	0.221	0.355	237.213745	-5.233694	-732.05	383.41
7	GUIDE	658774688	8.17	7399	-0.075	-0.071	0.085	0.138	237.049038	-4.786020	982.52	458.11

## 2.4 Star Slots

### 2.4.1 Slot 3

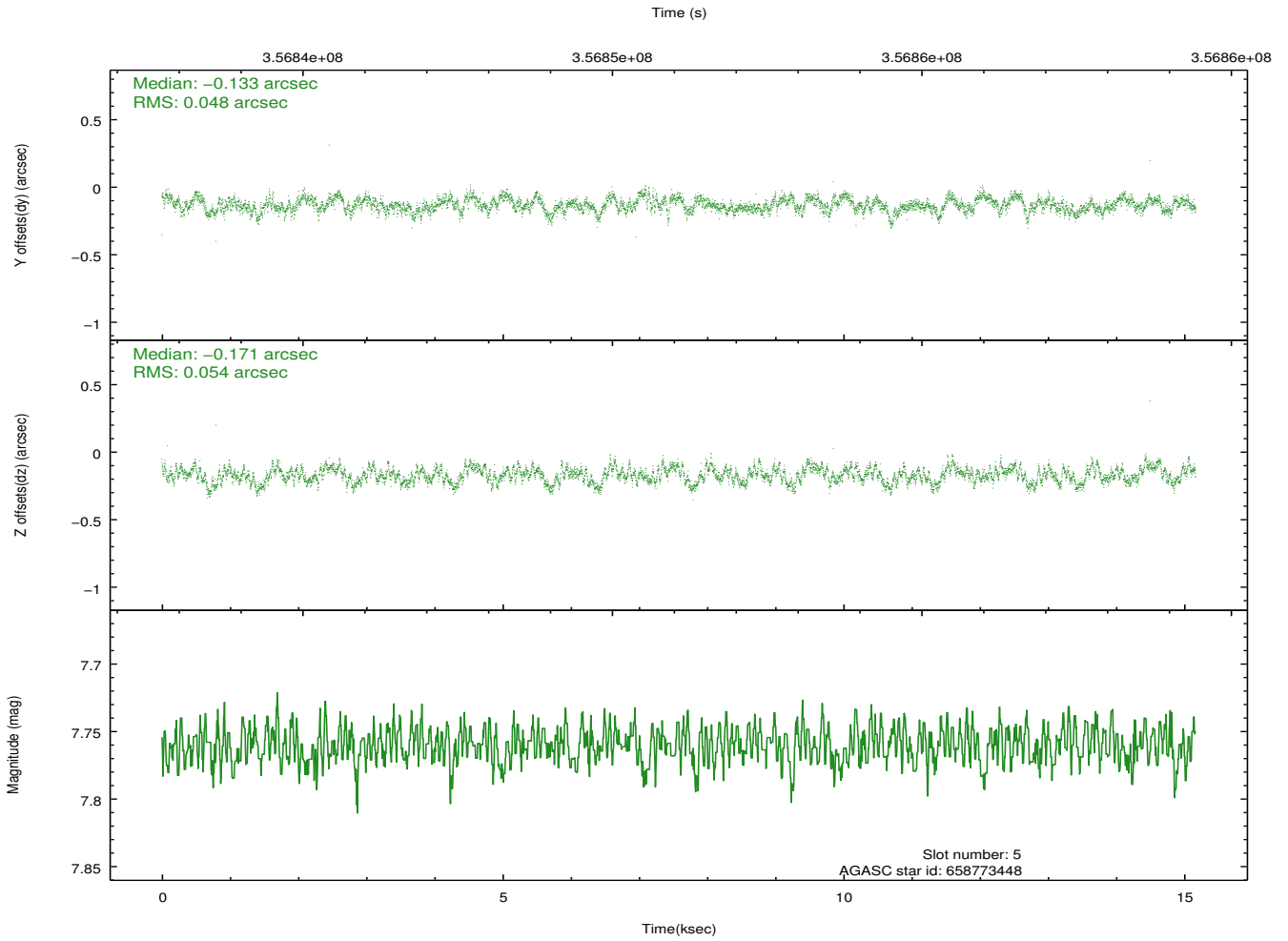
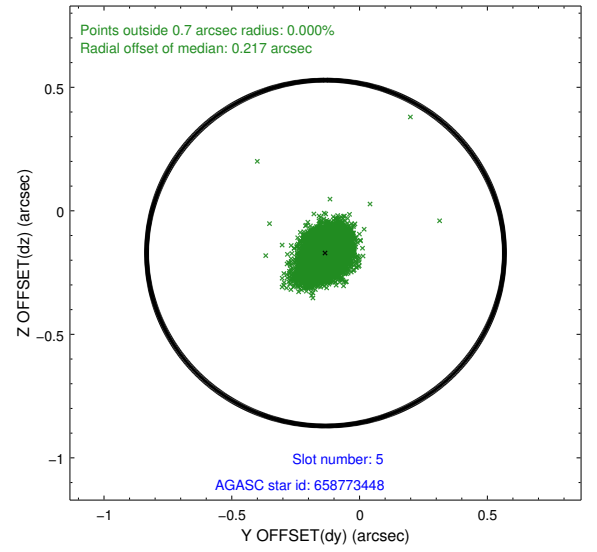
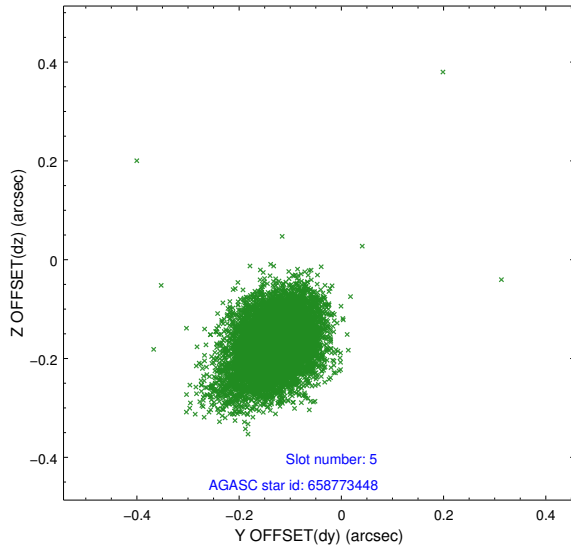


## 2.4.2 Slot 4

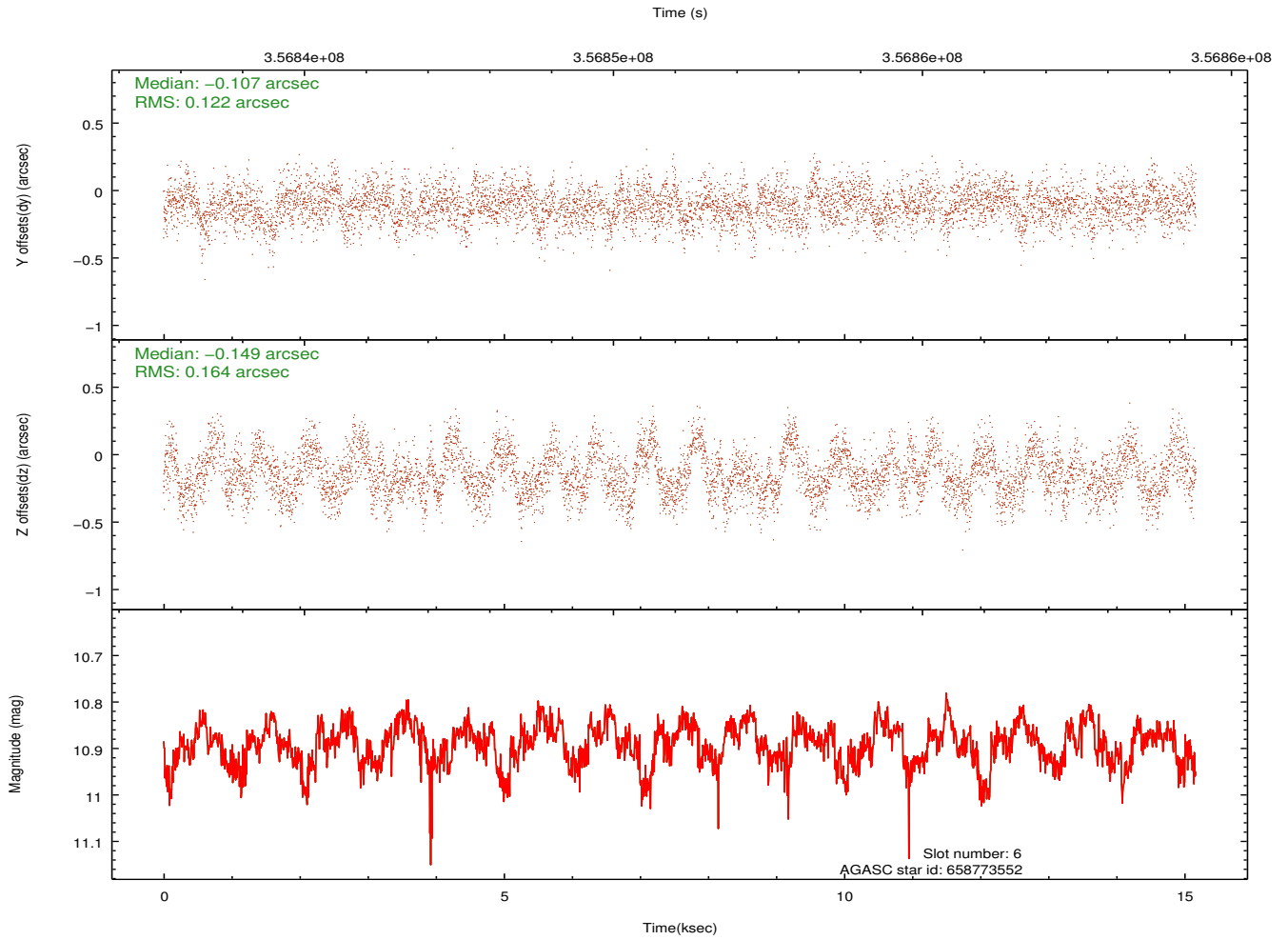
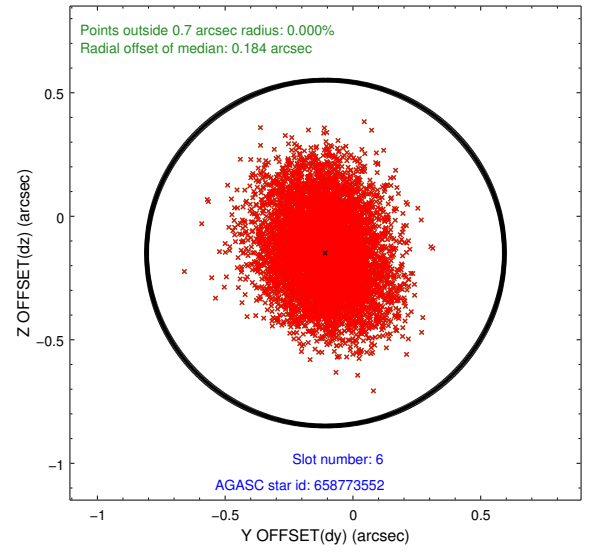
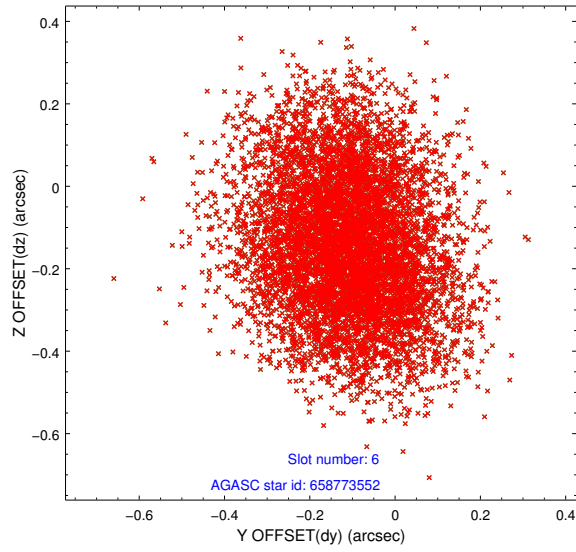




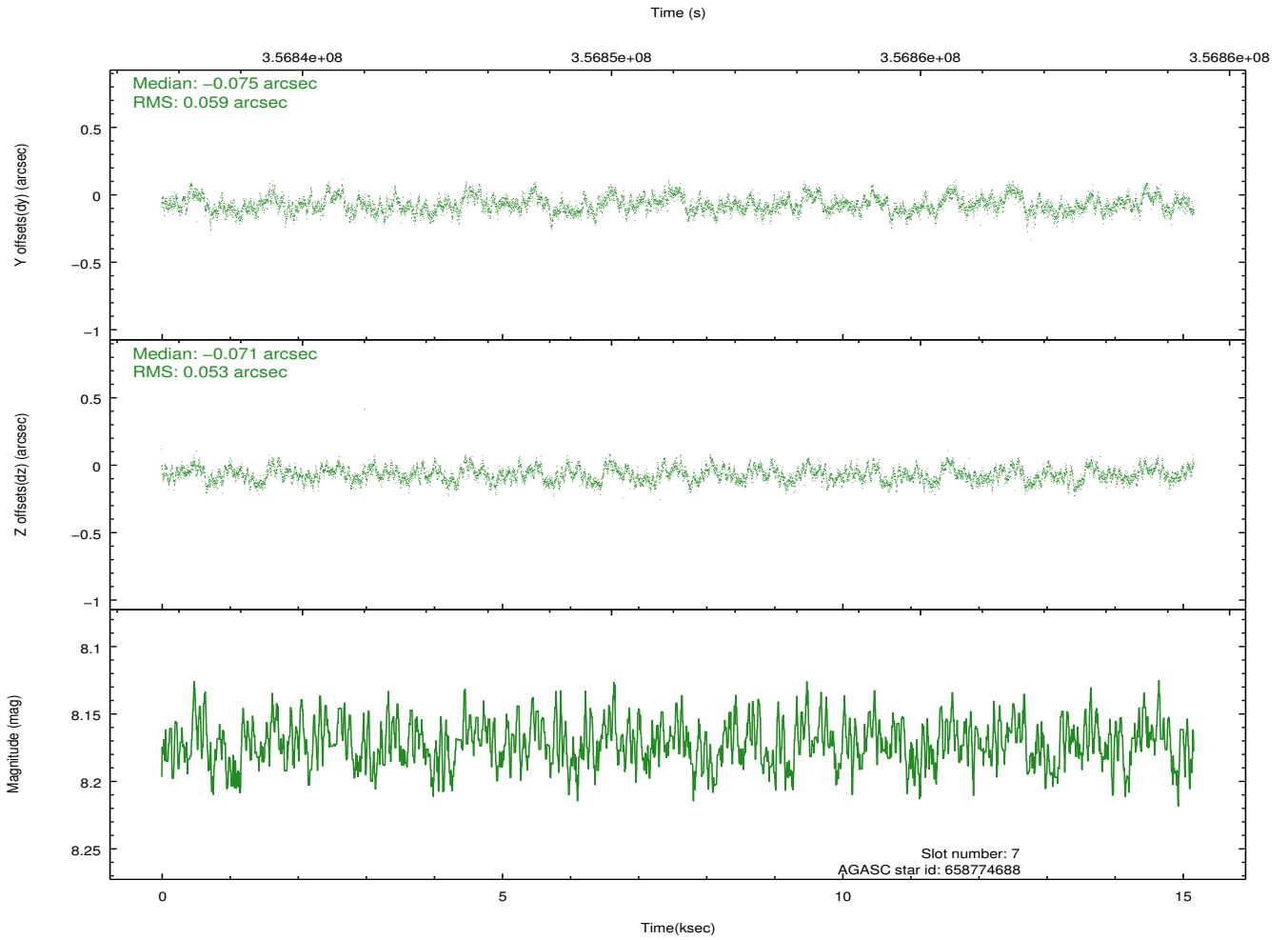
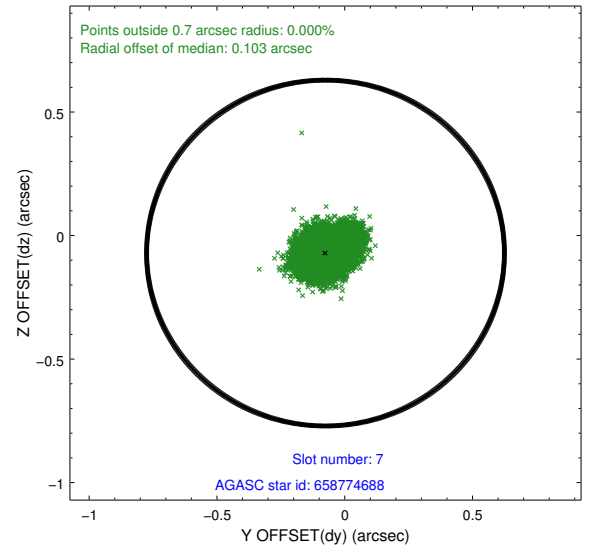
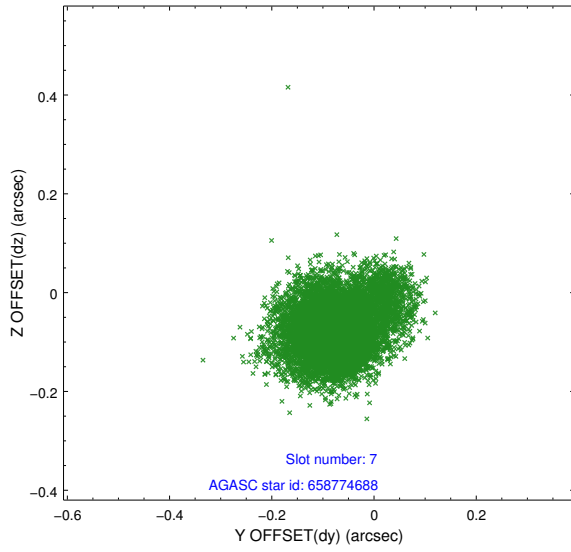
### 2.4.3 Slot 5



## 2.4.4 Slot 6

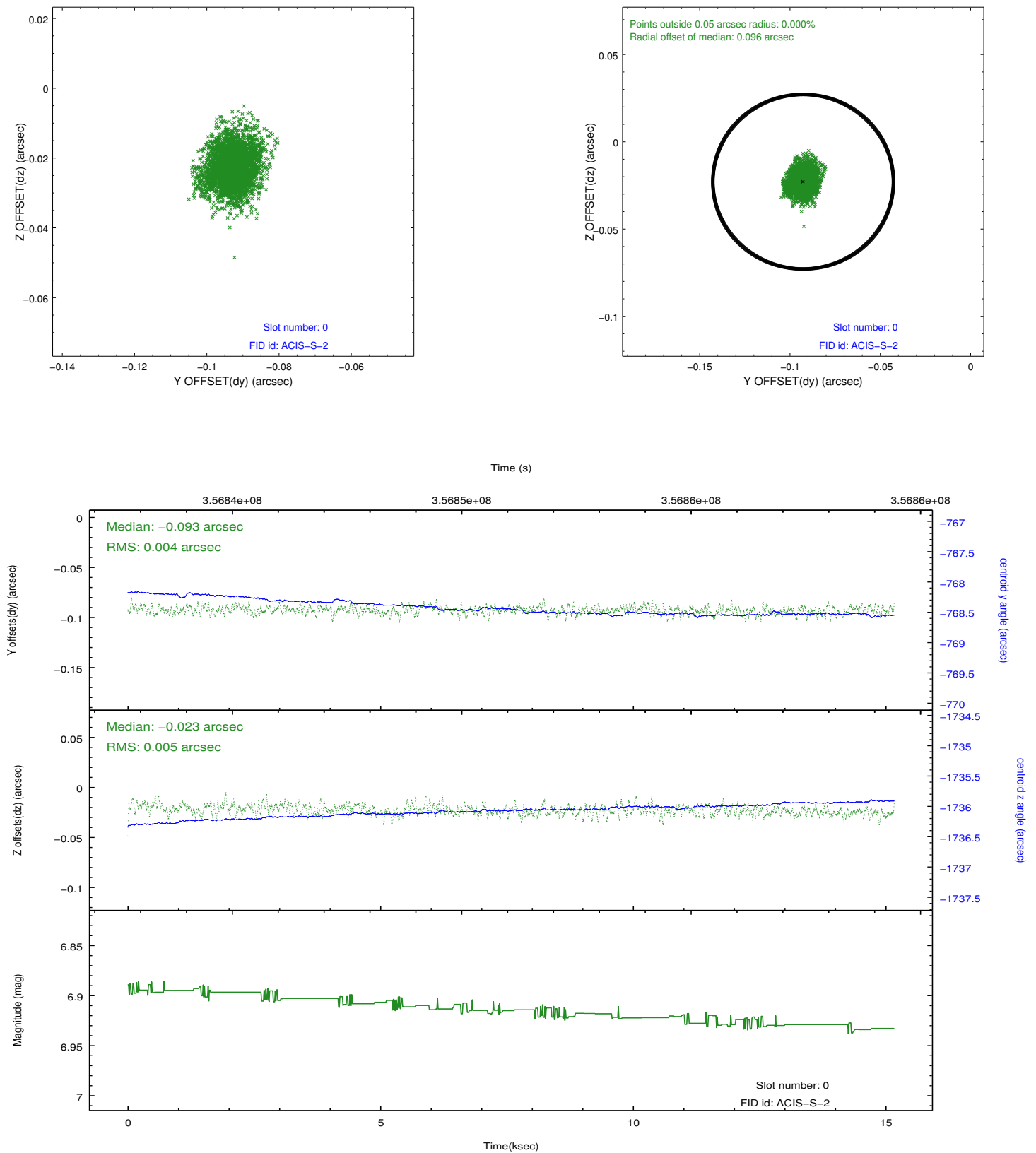


## 2.4.5 Slot 7

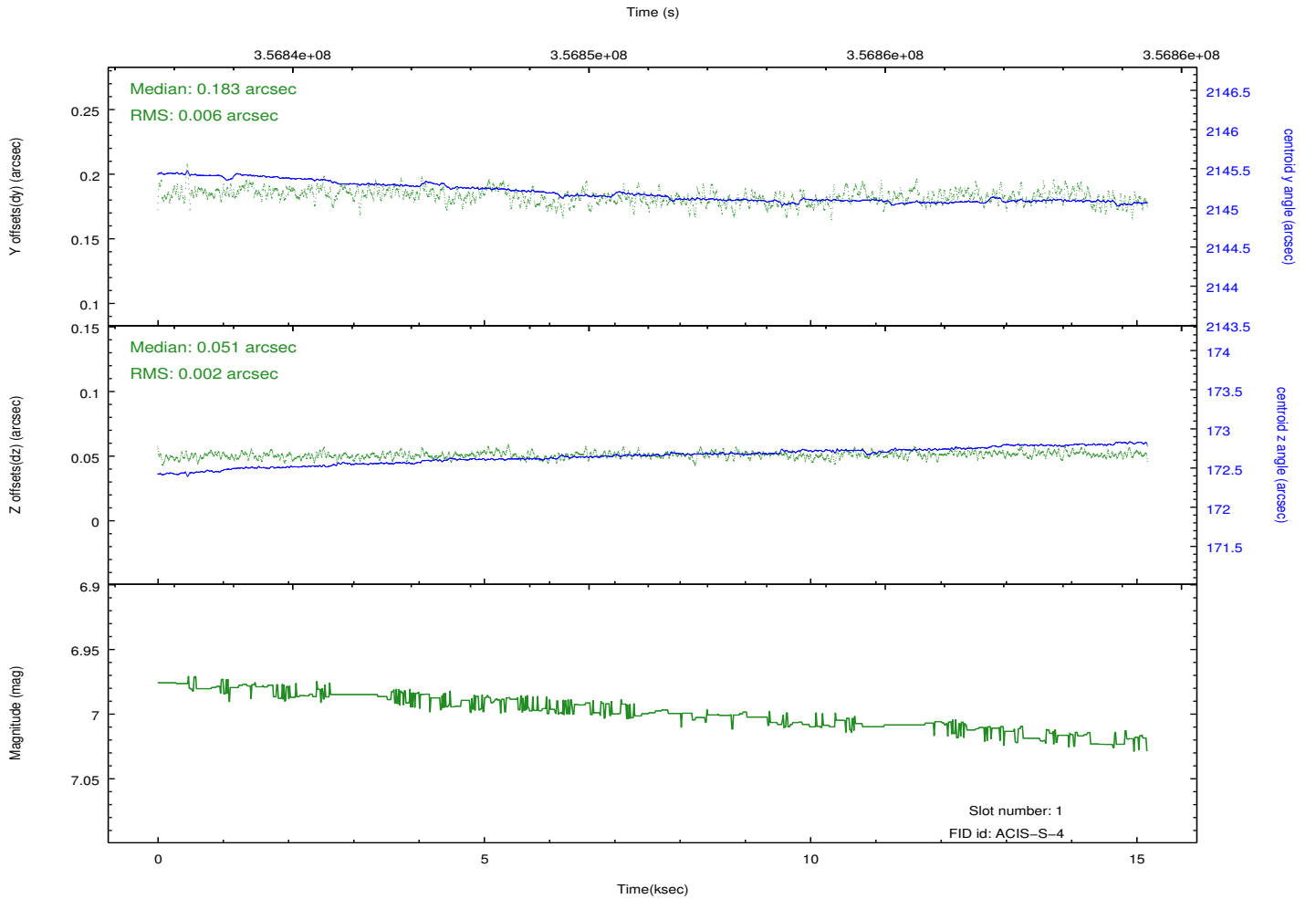
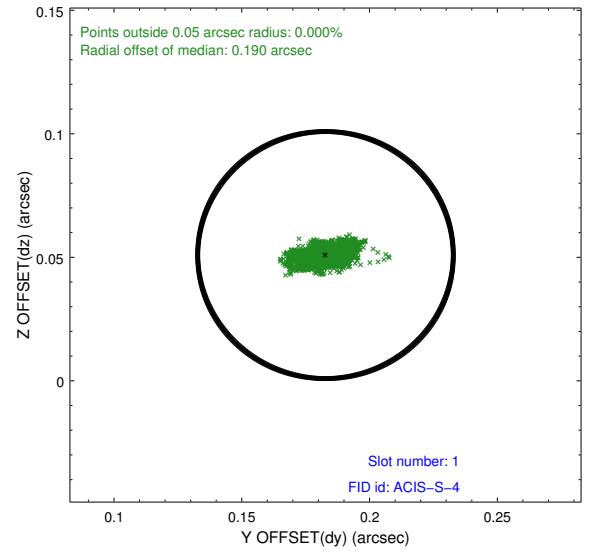
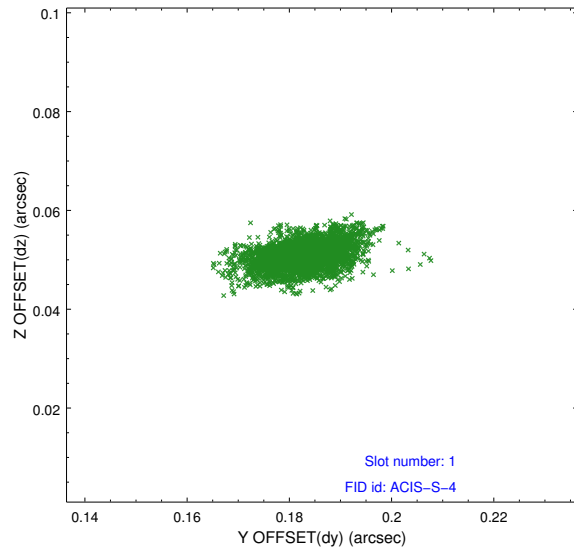


## 2.5 FID Slots

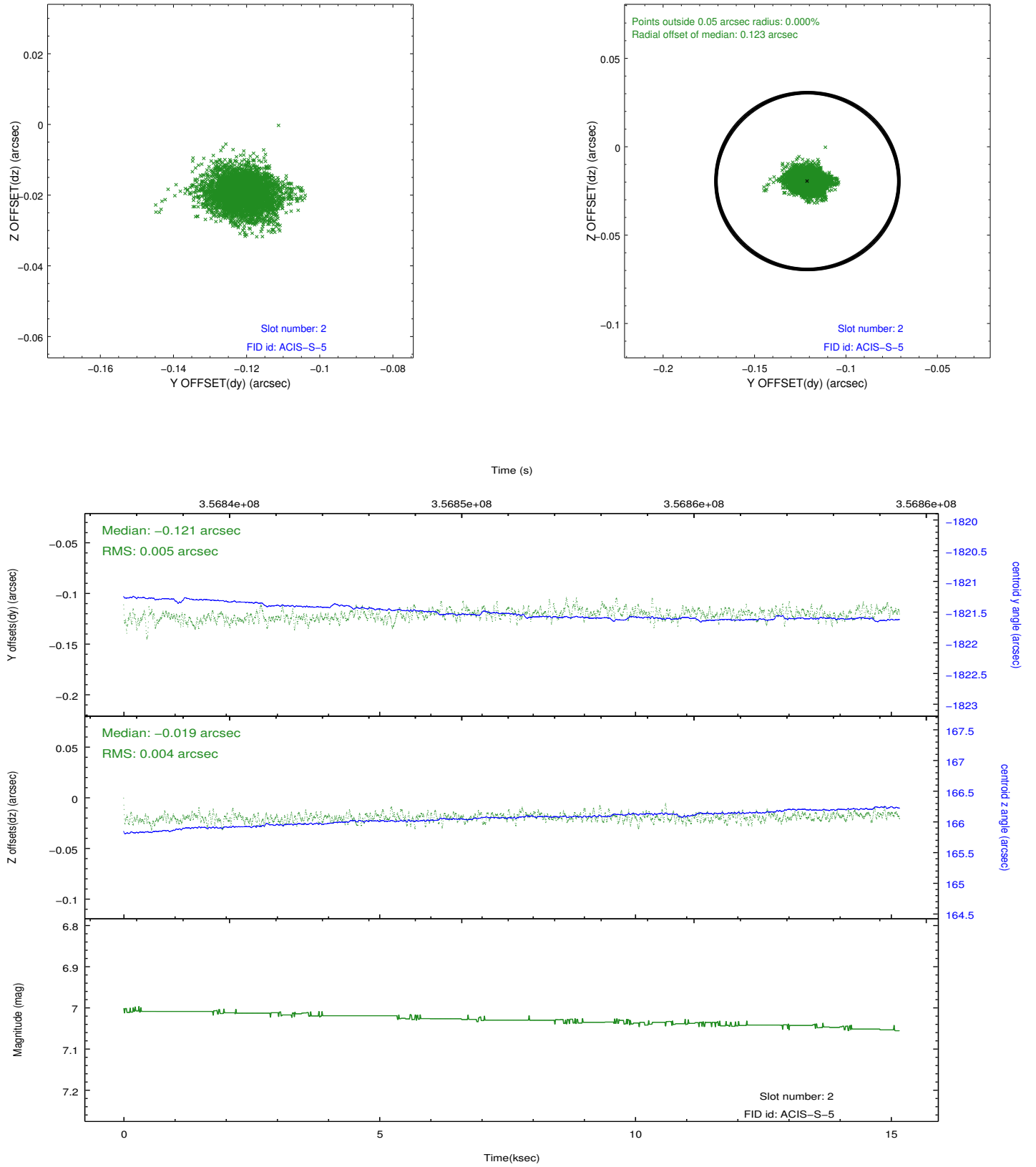
### 2.5.1 Slot 0



## 2.5.2 Slot 1



### 2.5.3 Slot 2



## A Summary

### A.1 Status

V&V Scientist	Jen Lauer
V&V Date (YYYY-MM-DD)	2012.06.07
V&V Edition	1
V&V Disposition and Status	OK
V&V Charge Time	15.1615999

### A.2 Comments