

# V&V Reference Report

## L2 ASCDS Version : 8.4.5

Observation 10292 - L2 Version 2  
Chandra X-Ray Center

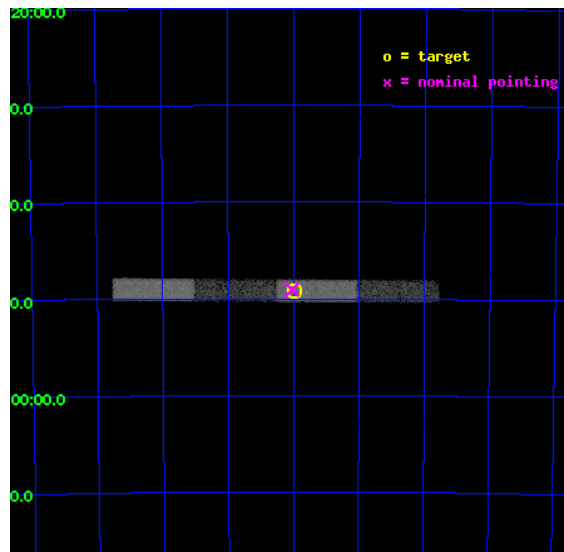
L2 Processing Date : Jun 8 2012

## Contents

<b>1</b>	<b>Front</b>	<b>2</b>
<b>2</b>	<b>OBI</b>	<b>3</b>
2.1	OBI . . . . .	3
2.1.1	Images . . . . .	3
2.1.2	Bias . . . . .	3
2.1.3	Parameters . . . . .	4
2.1.4	Events . . . . .	4
2.2	Compared Parameters . . . . .	5
2.3	Aspect . . . . .	6
2.4	Star Slots . . . . .	9
2.4.1	Slot 3 . . . . .	9
2.4.2	Slot 4 . . . . .	10
2.4.3	Slot 5 . . . . .	11
2.4.4	Slot 6 . . . . .	12
2.4.5	Slot 7 . . . . .	13
2.5	FID Slots . . . . .	14
2.5.1	Slot 0 . . . . .	14
2.5.2	Slot 1 . . . . .	15
2.5.3	Slot 2 . . . . .	16
<b>A</b>	<b>Summary</b>	<b>17</b>
A.1	Status . . . . .	17
A.2	Comments . . . . .	17

# 1 Front

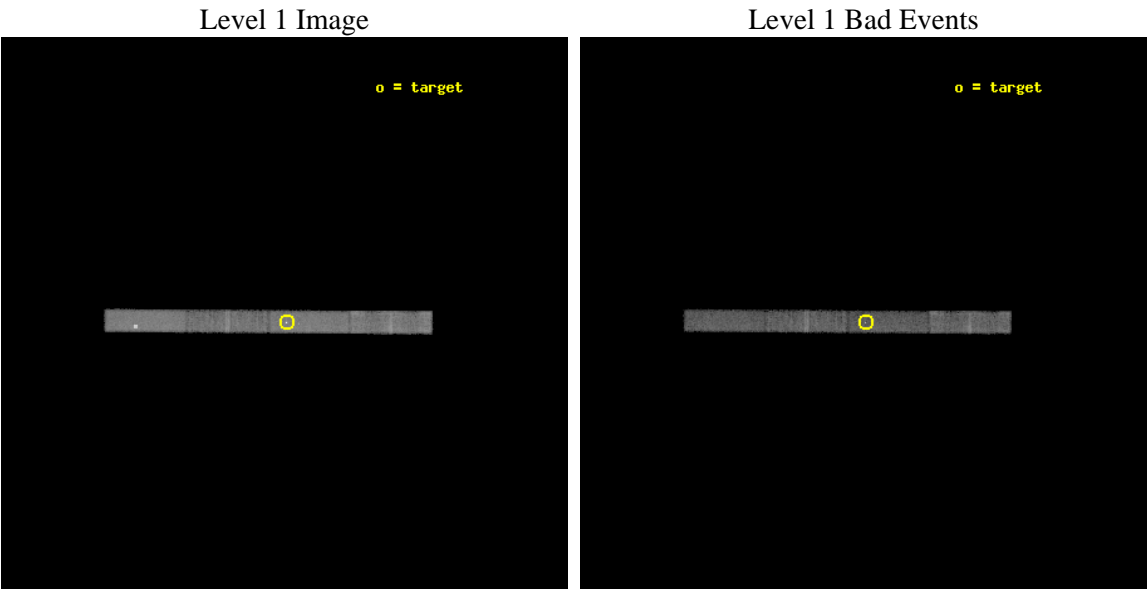
seq_num	701835	Sequence number
obs_id	10292	Observation id
title	Short-time monitoring of extreme spectral variations in Seyfert 2s	&#160
observer	Dr Guido Risaliti	Principal investigator
object	NGC 6300	Source name
dtcycle	0	&#160
cycle	P	events from which exps? Prim/Second/Both
ra_targ	259.247917	Observer's specified target RA [deg]
dec_targ	-62.820556	Observer's specified target Dec [deg]
ra_nom	259.25681528819	Nominal RA [deg]
dec_nom	-62.817921744891	Nominal Dec [deg]
roll_nom	0.38844327619814	Nominal Roll [deg]
revision	2	Processing version of data
ontime	10186.0	Sum of GTIs [s]
livetime	9784.4463229079	Livetime [s]
ontime5	10186.0	Sum of GTIs [s]
ontime6	10186.0	Sum of GTIs [s]
ontime7	10186.0	Sum of GTIs [s]
ontime8	10184.958959937	Sum of GTIs [s]
l2events	49010	Number of level 2 events



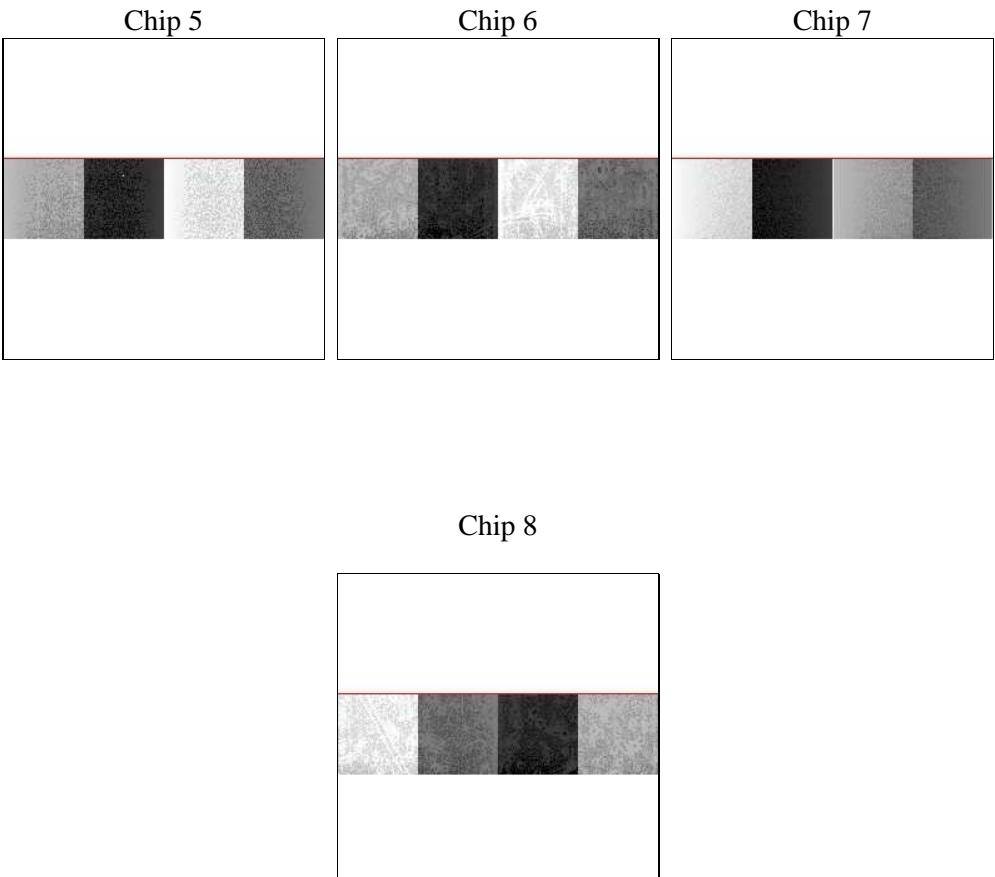
# 2 OBI

## 2.1 OBI

### 2.1.1 Images



### 2.1.2 Bias



Chip 8



### 2.1.3 Parameters

obi_num	0	Obi number	sched_exp_time	10000.000000	[s] Scheduled observation exposure time
ascdsver	8.4.5	Processing system revision	ontime	10186.0	Sum of GTIs [s]
caldsver	4.4.10	&#160	ontime5	10186.0	Sum of GTIs [s]
date	2012-06-08T19:45:37	Date and time of file creation	ontime6	10186.0	Sum of GTIs [s]
revision	2	Processing version of data	ontime7	10186.0	Sum of GTIs [s]
			ontime8	10184.958959937	Sum of GTIs [s]
			l1events	175727	Number of level 1 events

### 2.1.4 Events

	ccd 5	ccd 6	ccd 7	ccd 8
level 1 events	51858	32999	46970	43900
rejected events	25065	29046	24260	34664
rejected %	48%	88%	51%	78%

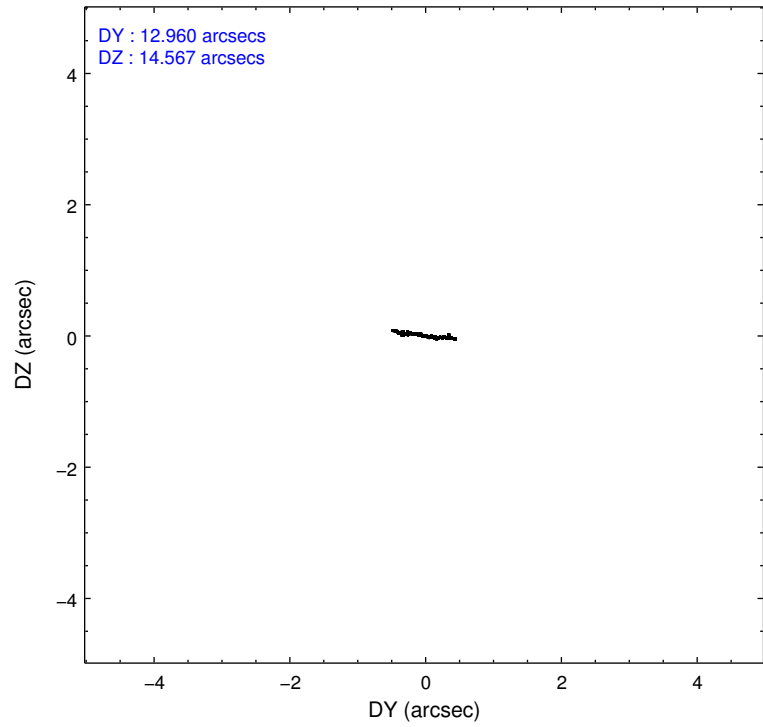
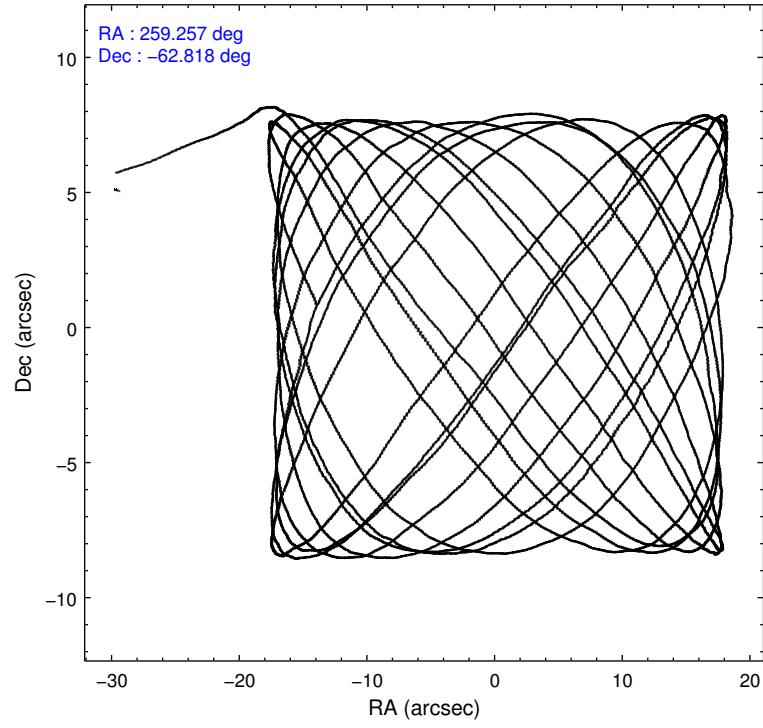
	ccd 5	ccd 6	ccd 7	ccd 8
grade 0 events	8301	1539	2904	2709
	16%	4%	6%	6%
grade 1 events	74	8	88	15
	0%	0%	0%	0%
grade 2 events	6291	800	5023	2057
	12%	2%	10%	4%
grade 3 events	1277	540	2419	1051
	2%	1%	5%	2%
grade 4 events	1243	530	2347	947
	2%	1%	4%	2%
grade 5 events	3726	1416	4151	1824
	7%	4%	8%	4%
grade 6 events	10662	710	10681	2809
	20%	2%	22%	6%
grade 7 events	20284	27456	19357	32488
	39%	83%	41%	74%

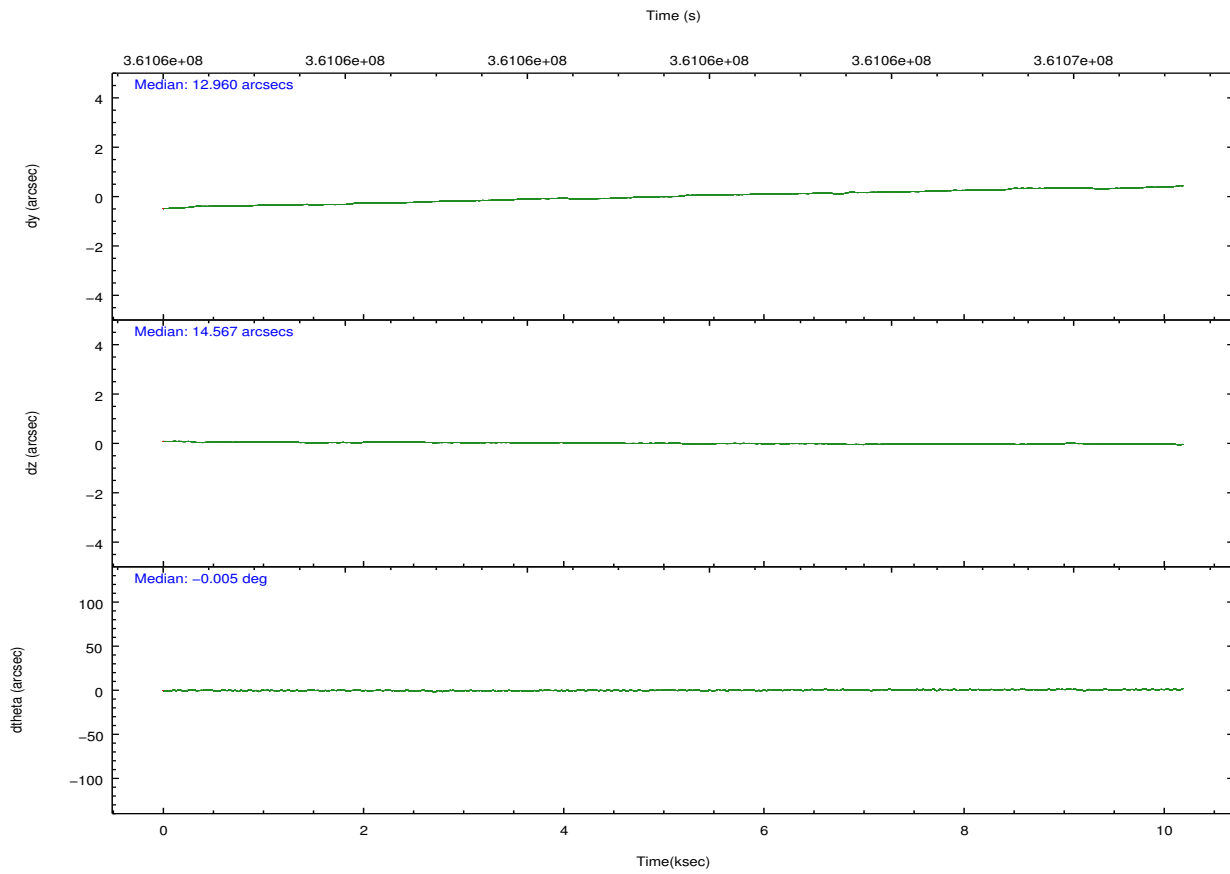
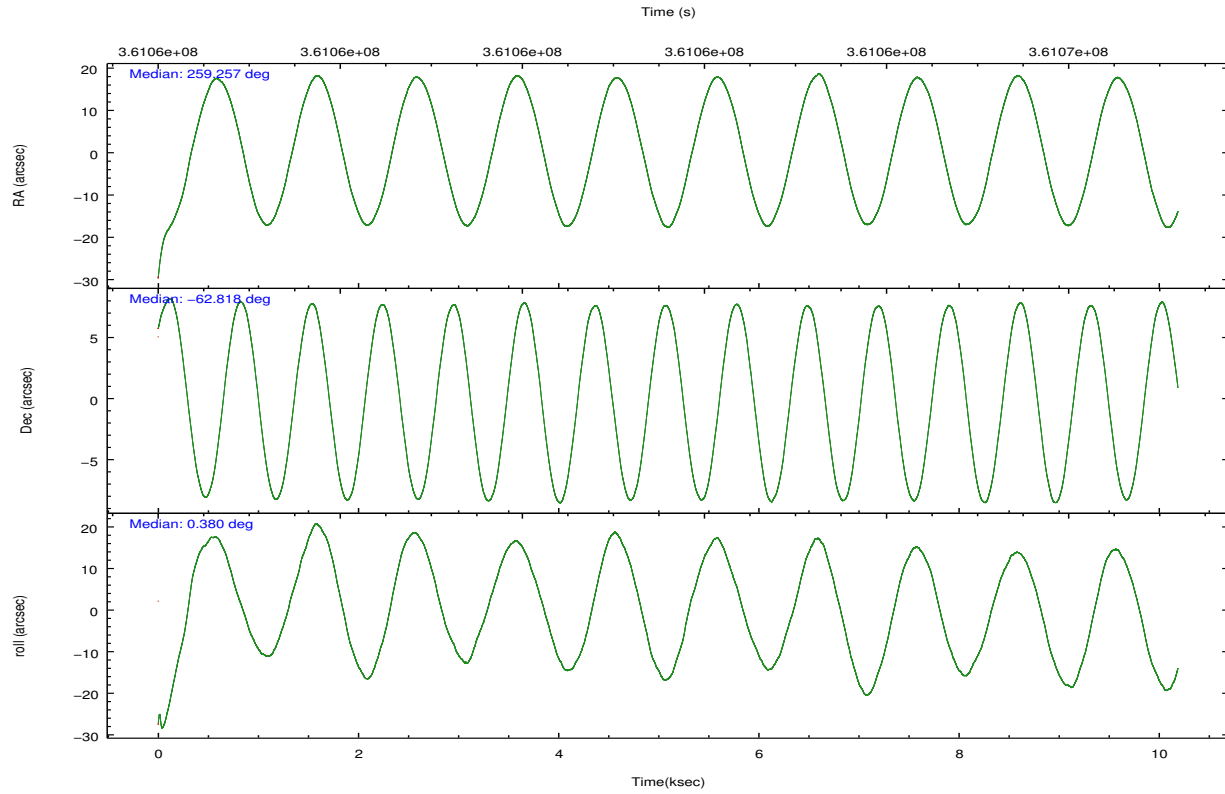


## 2.2 Compared Parameters

Parameter	Planned	Actual	Parameter	Planned	Actual
Instrument	ACIS	ACIS	Obspar format version number	7	7
Detector	ACIS-5678	ACIS-5678	Obspar file type	PREDICTED	ACTUAL
Grating	NONE	NONE	Obspar update status	NONE	UPDATED
Data mode	FAINT	FAINT	Number of optional ACIS chips dropped	0	0
Observation mode	POINTING	POINTING	On-chip summing requested	N	N
[deg] Pointing RA	259.205686	259.2568152881871	Subarray requested	CUSTOM	1/4
[deg] Pointing Dec	-62.832116	-62.81792174489094	Subarray start row	385	385
[deg] Pointing Roll	0.186323	0.3884432761981416	Subarray row count	256	256
[mm] SIM focus pos	-0.684267	-0.6828225247311905	Alternating exposures requested	N	N
[mm] SIM defocus	0	0.001444936568705701	[s] Primary exposure time	0.000000	1
[mm] SIM translation stage pos	-190.132523	-190.1400660498719			
[mm] SIM translation stage offset	0	0.00754346686406393			
[s] Observation start time (MET)	361056698.184000	361055797.58833			
Observation start date	2009-06-10T21:30:32	2009-06-10T21:16:37			
[s] Observation end time (MET)	361066698.184000	361067957.16393			
Observation end date	2009-06-11T00:17:12	2009-06-11T00:39:17			
Read mode	TIMED	TIMED			

## 2.3 Aspect



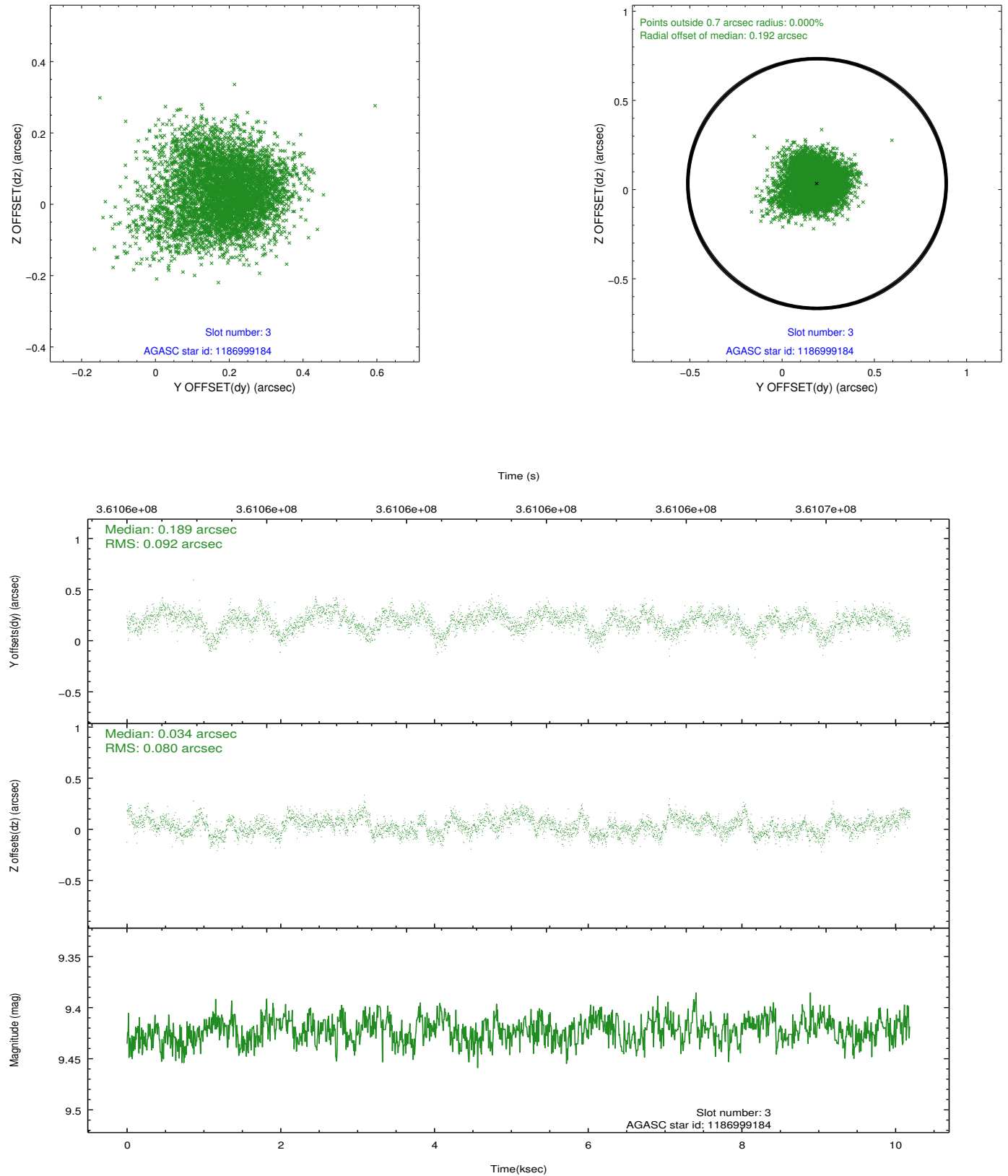


### Slot Statistics

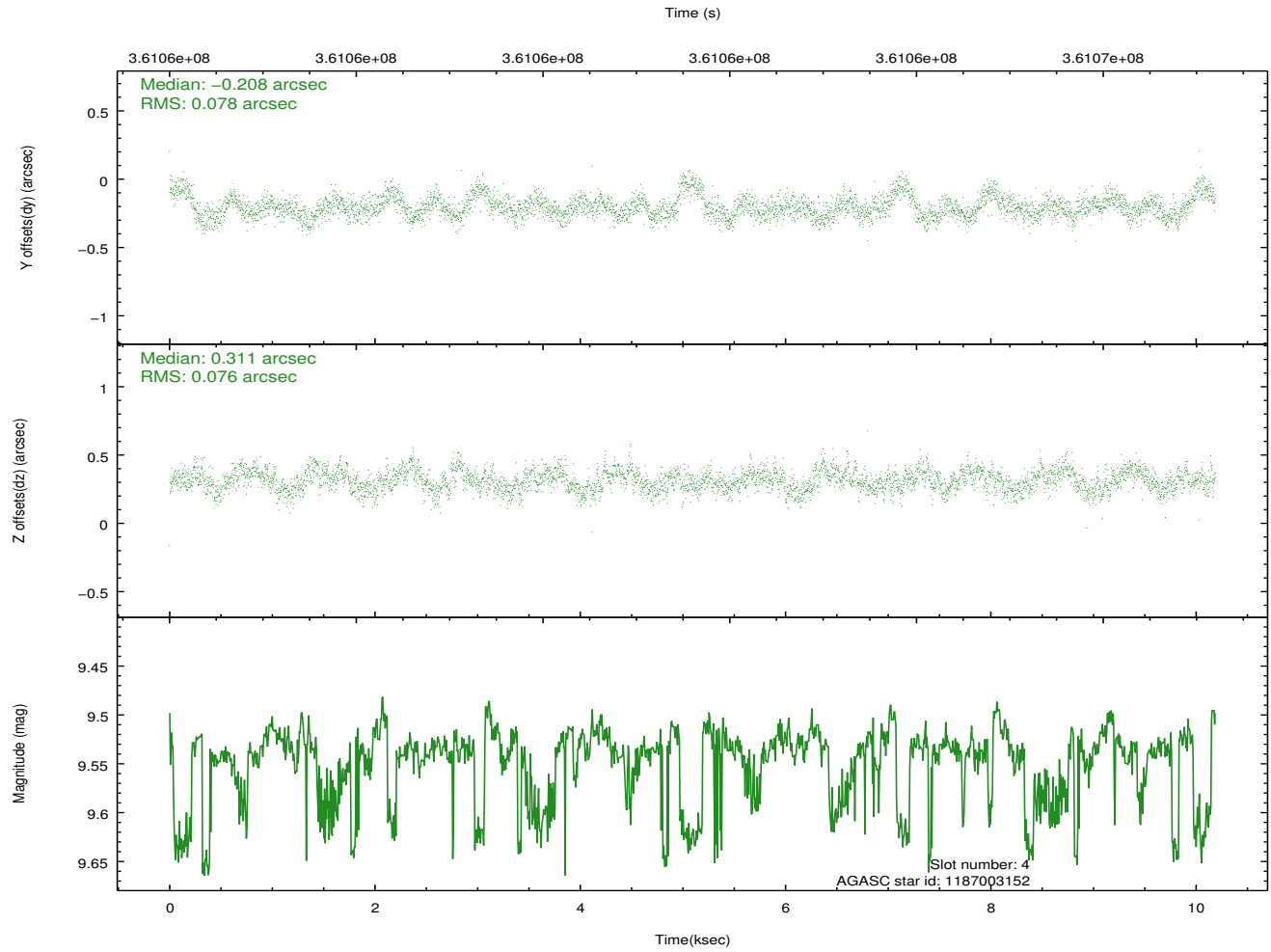
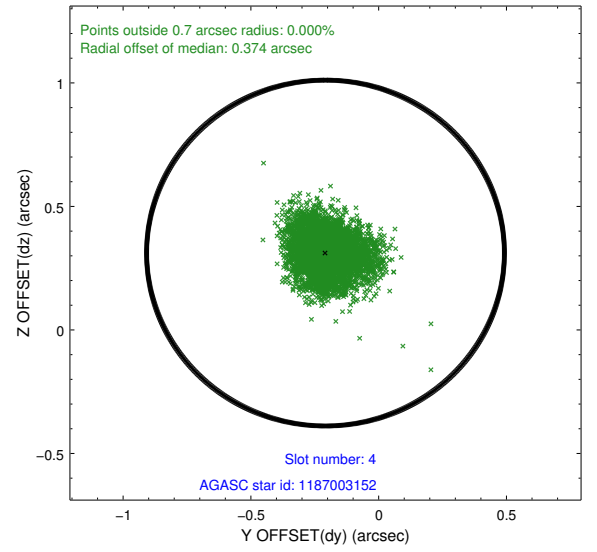
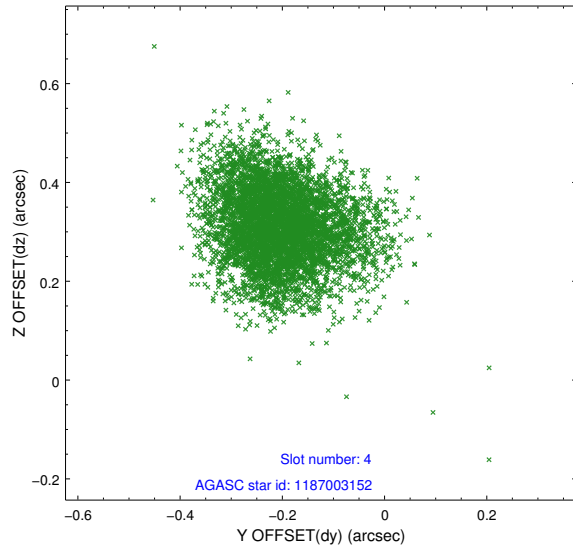
slot	status	id	mag	n_pts	med_dy	med_dz	dr1	dr2	ra	dec	mean_y	mean_z
0	FID	ACIS-S-2	6.89	2486	0.005	-0.034	0.008	0.014	0.000000	0.000000	-765.84	-1735.99
1	FID	ACIS-S-5	7.02	2486	-0.099	0.013	0.009	0.016	0.000000	0.000000	-1819.32	165.48
2	FID	ACIS-S-6	7.11	2486	0.069	0.029	0.008	0.014	0.000000	0.000000	395.23	810.02
3	GUIDE	1186999184	9.42	4969	0.189	0.034	0.129	0.213	260.481291	-62.791729	2100.56	117.72
4	GUIDE	1187003152	9.54	4919	-0.208	0.311	0.114	0.187	259.688405	-63.307332	776.00	-1716.19
5	GUIDE	1187005712	10.52	4938	0.023	0.550	0.201	0.332	258.429980	-63.298362	-1259.46	-1682.33
6	GUIDE	1187015832	8.18	4971	-0.041	-0.235	0.091	0.144	260.132419	-62.192136	1563.74	2286.98
7	GUIDE	1187006144	10.32	4952	0.025	-0.651	0.168	0.277	258.352232	-63.327424	-1383.97	-1788.55

## 2.4 Star Slots

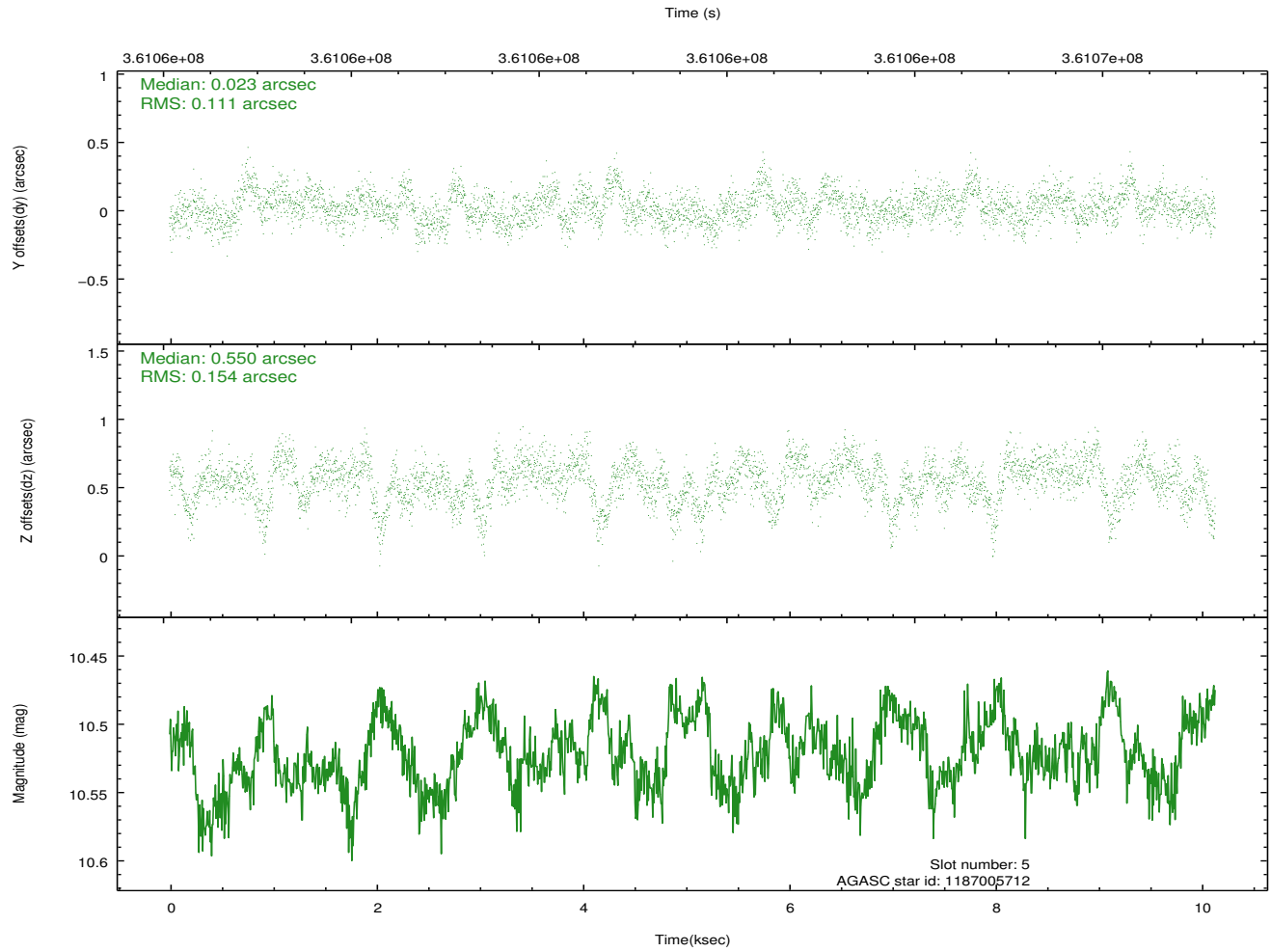
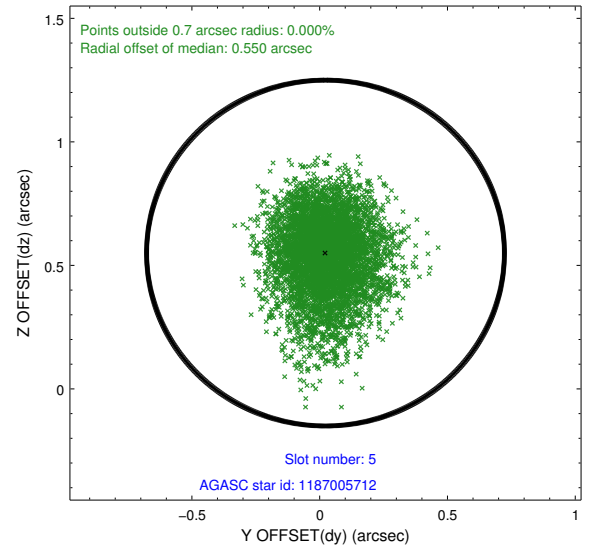
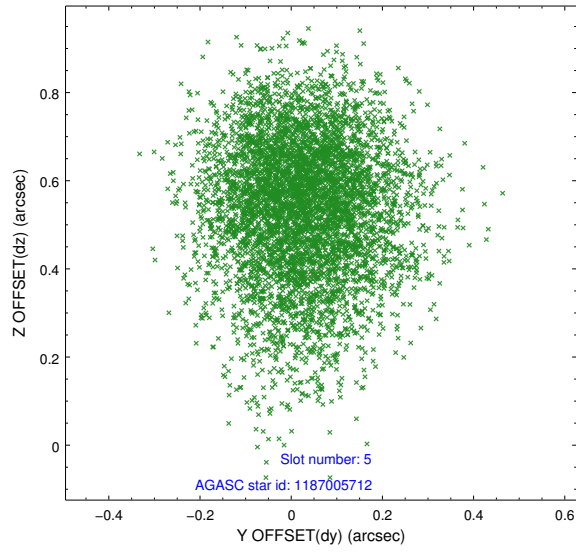
### 2.4.1 Slot 3



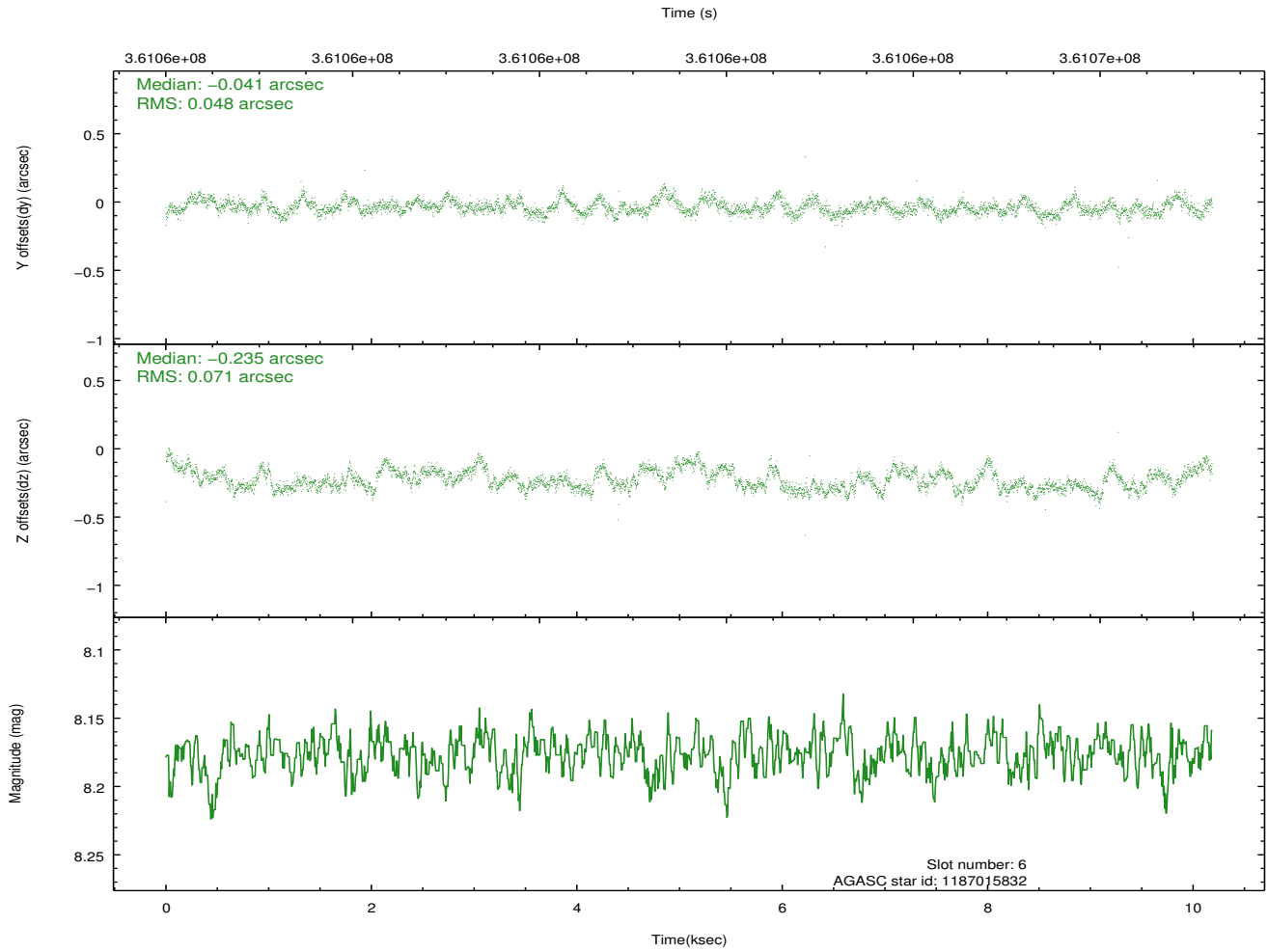
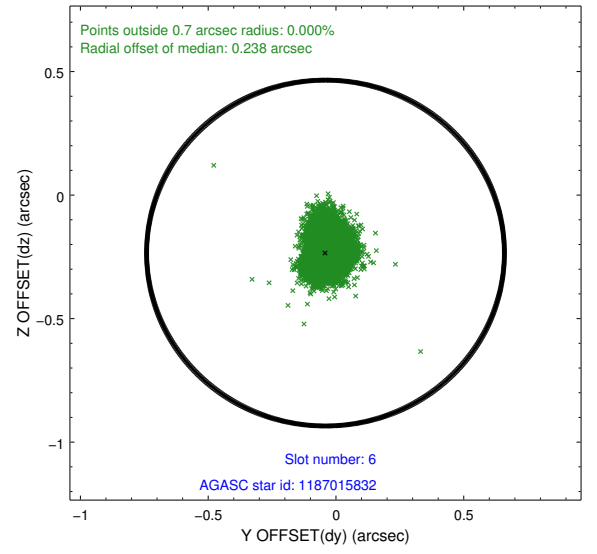
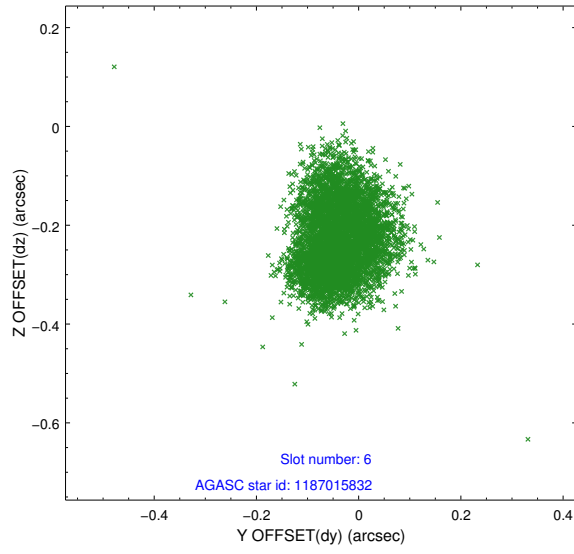
## 2.4.2 Slot 4



### 2.4.3 Slot 5

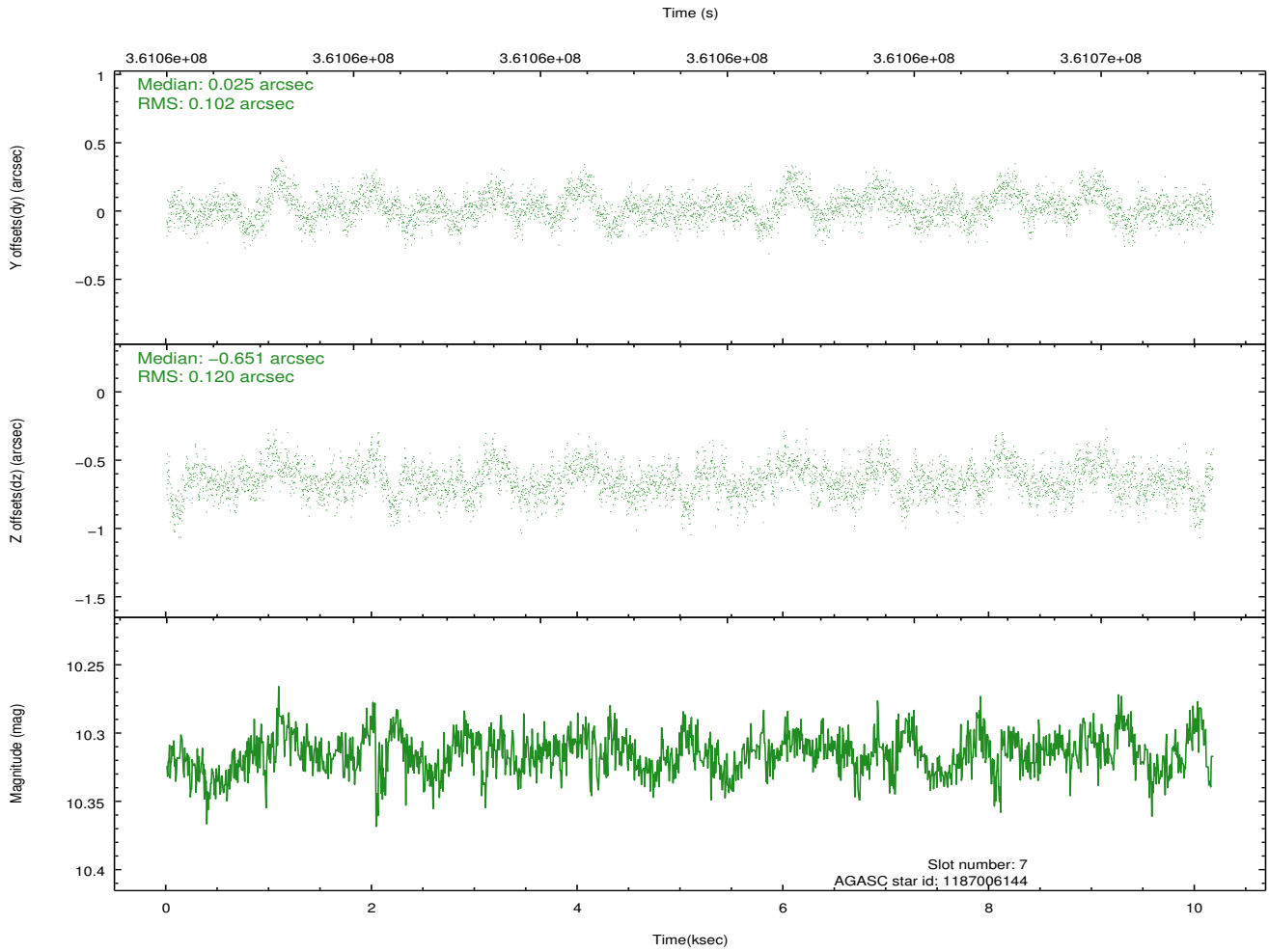
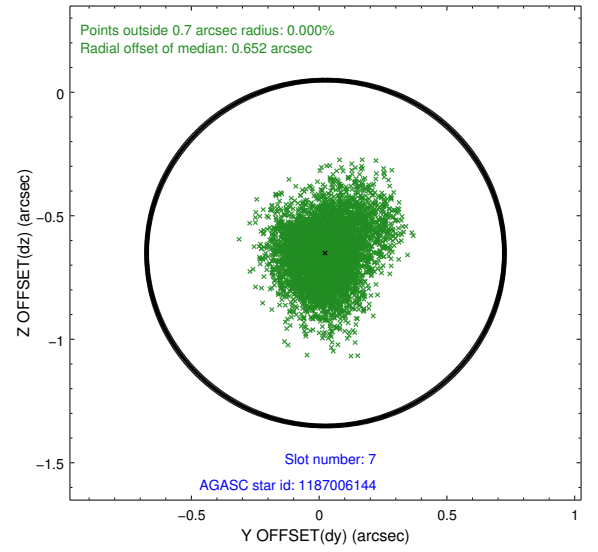
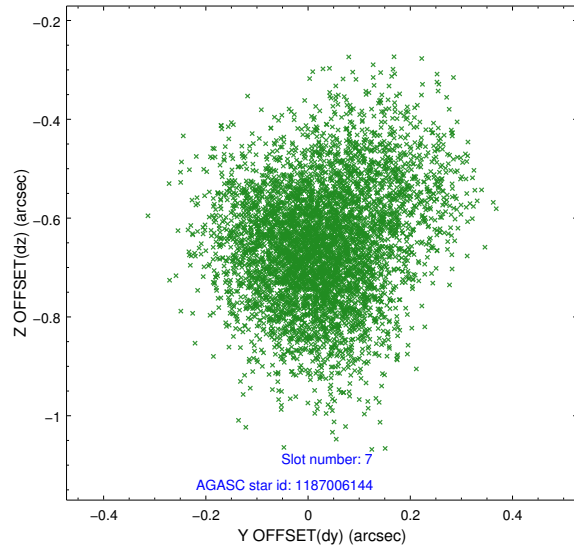


## 2.4.4 Slot 6



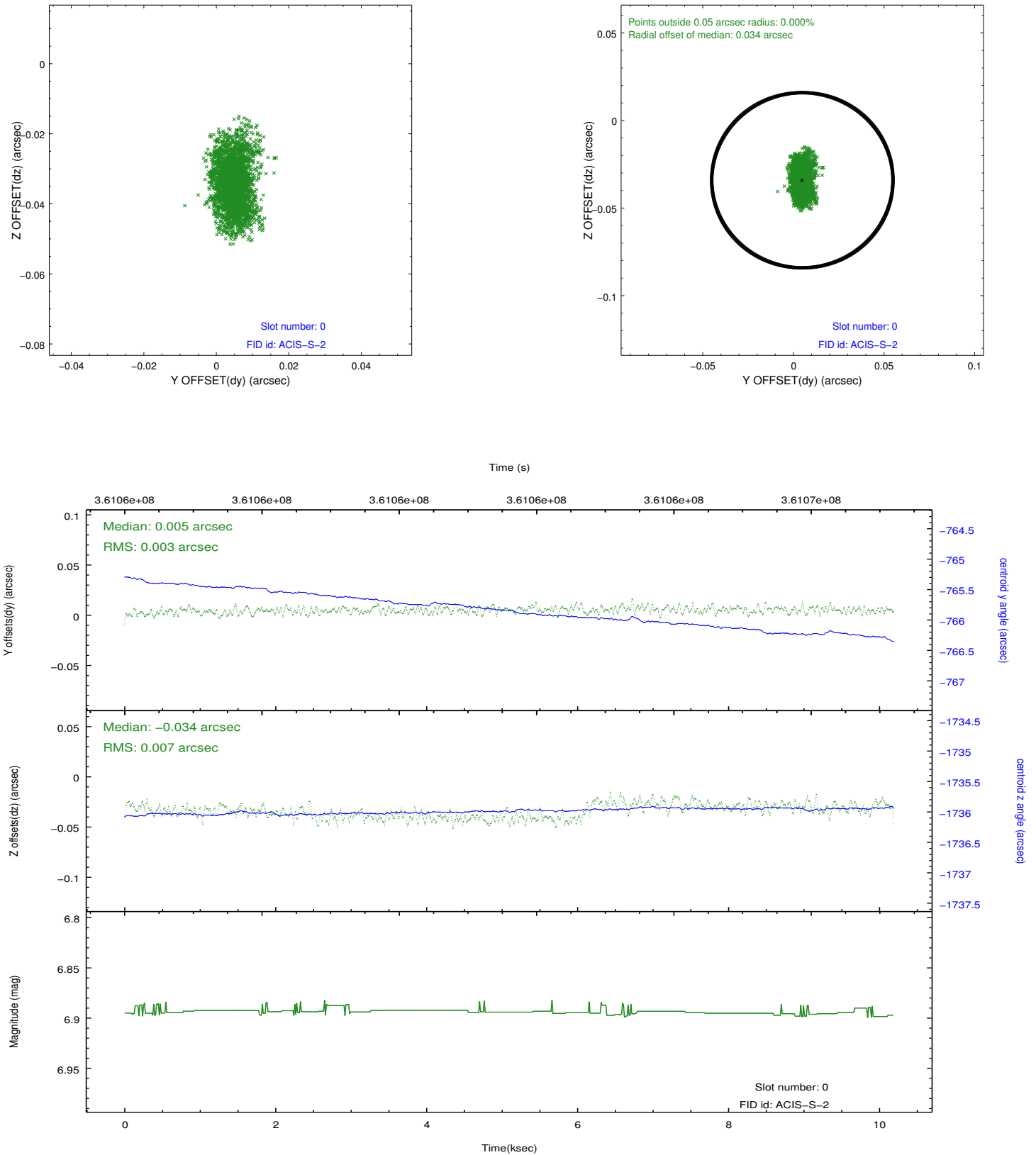


## 2.4.5 Slot 7

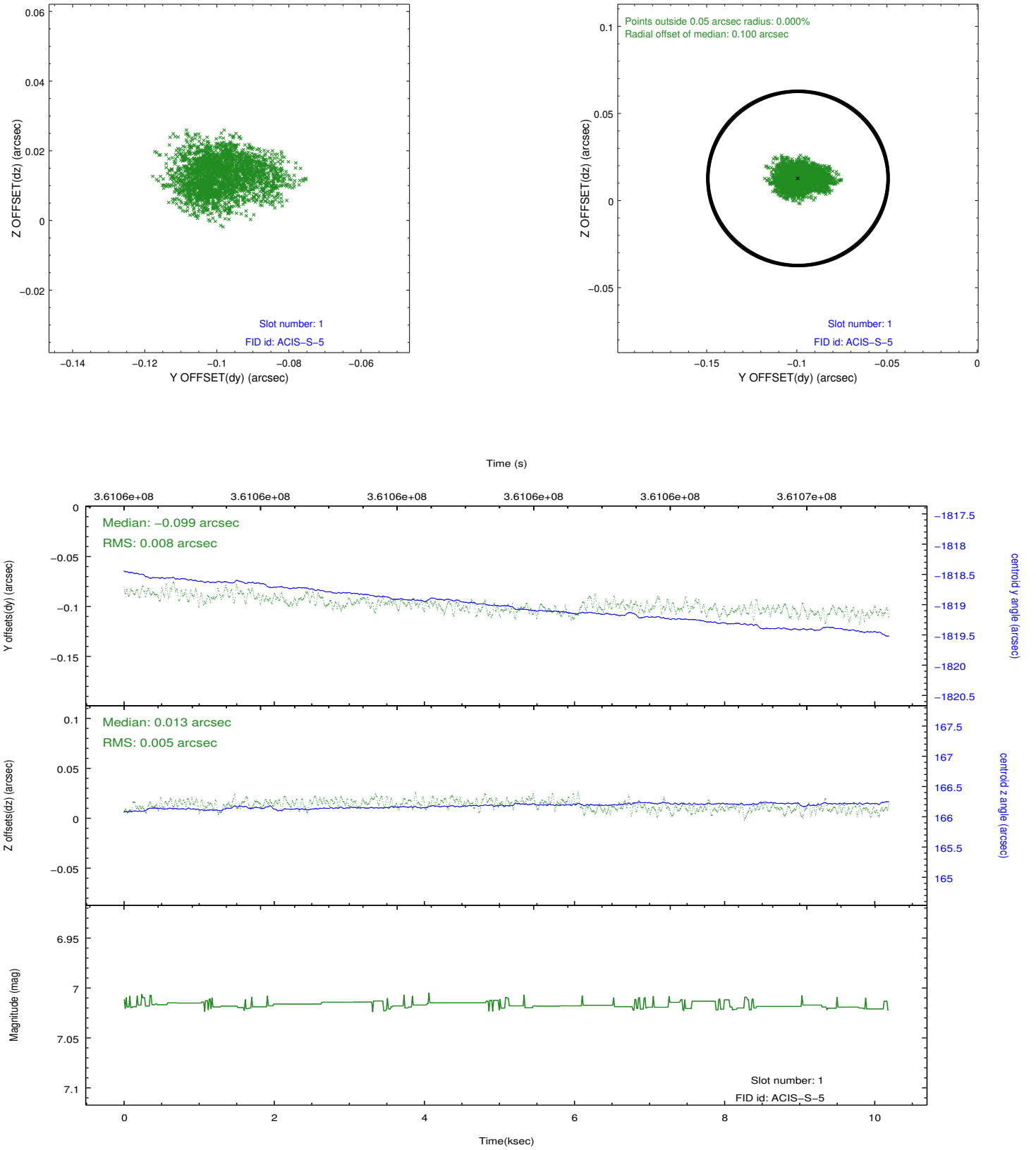


## 2.5 FID Slots

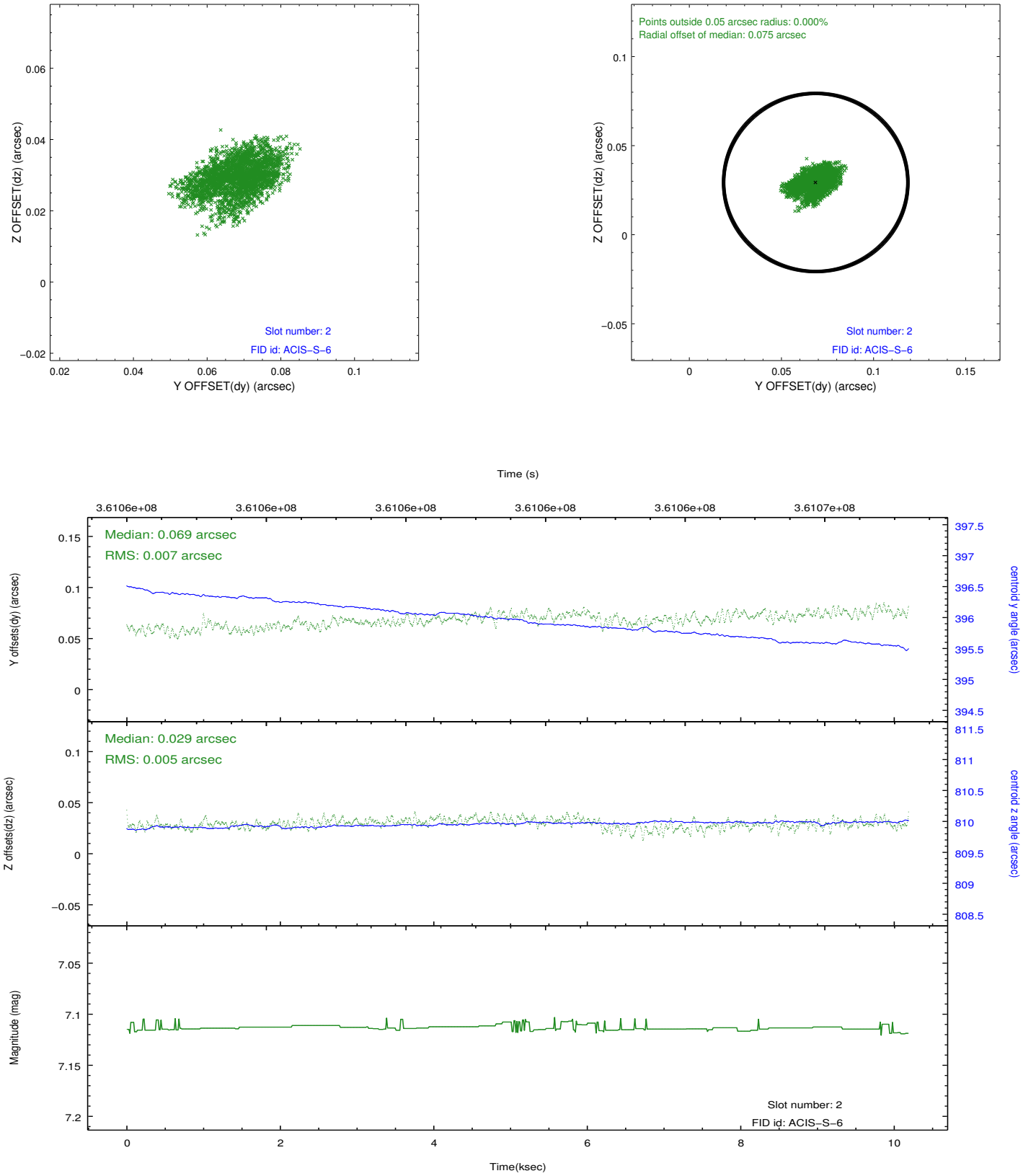
### 2.5.1 Slot 0



## 2.5.2 Slot 1



### 2.5.3 Slot 2



## A Summary

### A.1 Status

V&V Scientist	Jen Lauer
V&V Date (YYYY-MM-DD)	2012.06.12
V&V Edition	1
V&V Disposition and Status	OK
V&V Charge Time	10.186

### A.2 Comments