

# V&V Reference Report

## L2 ASCDS Version : 8.4.5

Observation 10291 - L2 Version 2  
Chandra X-Ray Center

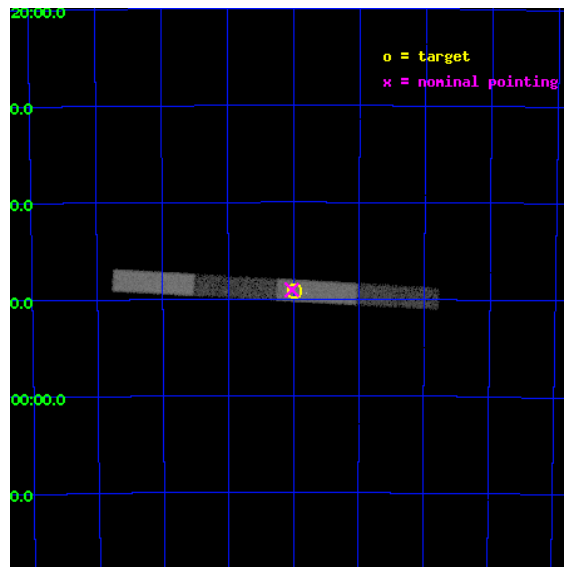
L2 Processing Date : Jun 8 2012

## Contents

<b>1</b>	<b>Front</b>	<b>2</b>
<b>2</b>	<b>OBI</b>	<b>3</b>
2.1	OBI . . . . .	3
2.1.1	Images . . . . .	3
2.1.2	Bias . . . . .	3
2.1.3	Parameters . . . . .	4
2.1.4	Events . . . . .	4
2.2	Compared Parameters . . . . .	5
2.3	Aspect . . . . .	6
2.4	Star Slots . . . . .	9
2.4.1	Slot 3 . . . . .	9
2.4.2	Slot 4 . . . . .	10
2.4.3	Slot 5 . . . . .	11
2.4.4	Slot 6 . . . . .	12
2.4.5	Slot 7 . . . . .	13
2.5	FID Slots . . . . .	14
2.5.1	Slot 0 . . . . .	14
2.5.2	Slot 1 . . . . .	15
2.5.3	Slot 2 . . . . .	16
<b>A</b>	<b>Summary</b>	<b>17</b>
A.1	Status . . . . .	17
A.2	Comments . . . . .	17

# 1 Front

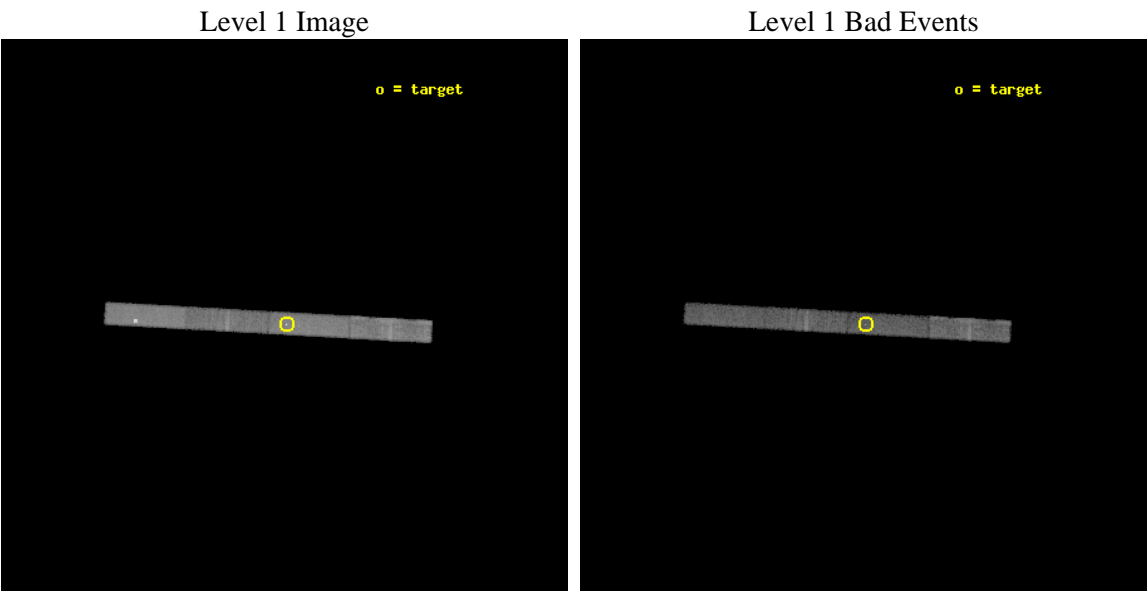
seq_num	701834	Sequence number
obs_id	10291	Observation id
title	Short-time monitoring of extreme spectral variations in Seyfert 2s	&#160
observer	Dr Guido Risaliti	Principal investigator
object	NGC 6300	Source name
dtcycle	0	&#160
cycle	P	events from which exps? Prim/Second/Both
ra_targ	259.247917	Observer's specified target RA [deg]
dec_targ	-62.820556	Observer's specified target Dec [deg]
ra_nom	259.25659414262	Nominal RA [deg]
dec_nom	-62.817753413298	Nominal Dec [deg]
roll_nom	3.1828240178667	Nominal Roll [deg]
revision	2	Processing version of data
ontime	10169.0	Sum of GTIs [s]
livetime	9768.1164988858	Livetime [s]
ontime5	10169.0	Sum of GTIs [s]
ontime6	10169.0	Sum of GTIs [s]
ontime7	10169.0	Sum of GTIs [s]
ontime8	10169.0	Sum of GTIs [s]
l2events	47956	Number of level 2 events



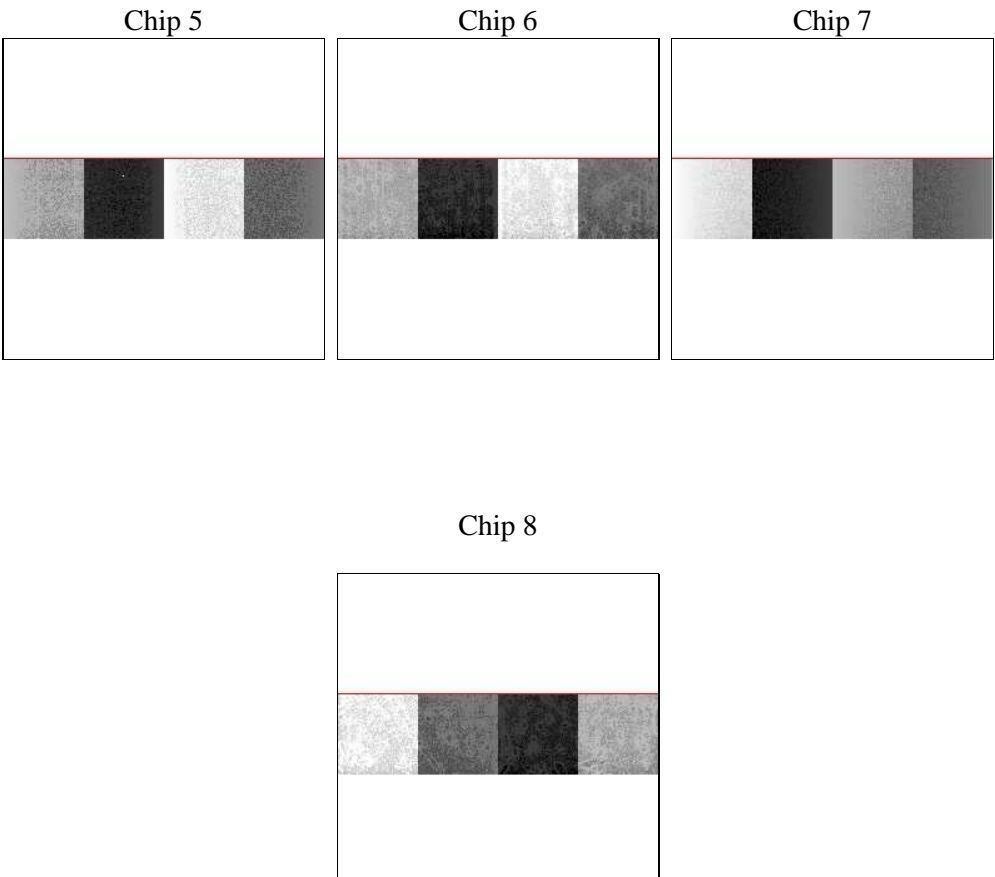
# 2 OBI

## 2.1 OBI

### 2.1.1 Images



### 2.1.2 Bias



Chip 8



### 2.1.3 Parameters

obi_num	0	Obi number	sched_exp_time	10000.000000	[s] Scheduled observation exposure time
ascdsver	8.4.5	Processing system revision	ontime	10169.0	Sum of GTIs [s]
caldsver	4.4.10	&#160	ontime5	10169.0	Sum of GTIs [s]
date	2012-06-08T19:46:02	Date and time of file creation	ontime6	10169.0	Sum of GTIs [s]
revision	2	Processing version of data	ontime7	10169.0	Sum of GTIs [s]
			ontime8	10169.0	Sum of GTIs [s]
			l1events	188225	Number of level 1 events

### 2.1.4 Events

	ccd 5	ccd 6	ccd 7	ccd 8
level 1 events	56721	34551	49759	47194
rejected events	30119	30618	27948	38340
rejected %	53%	88%	56%	81%

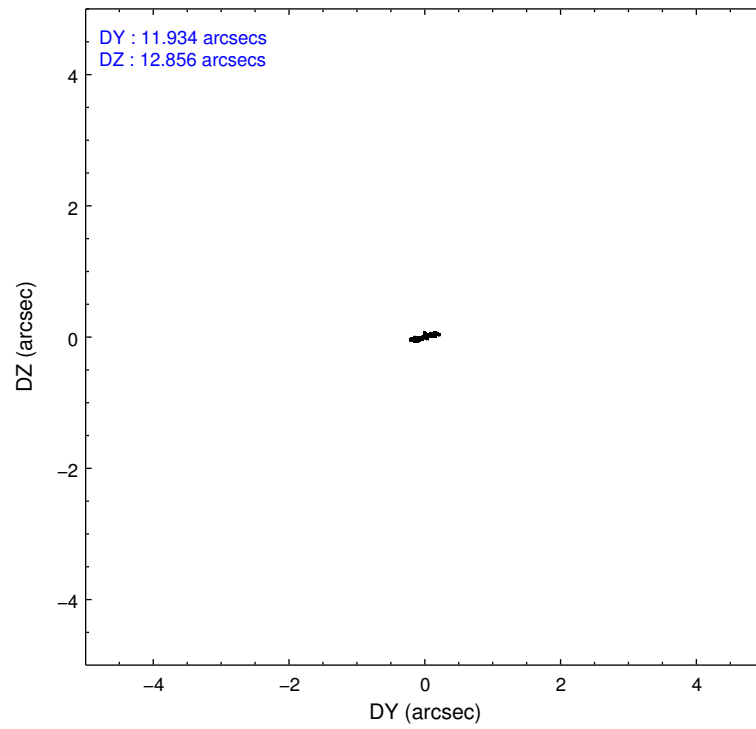
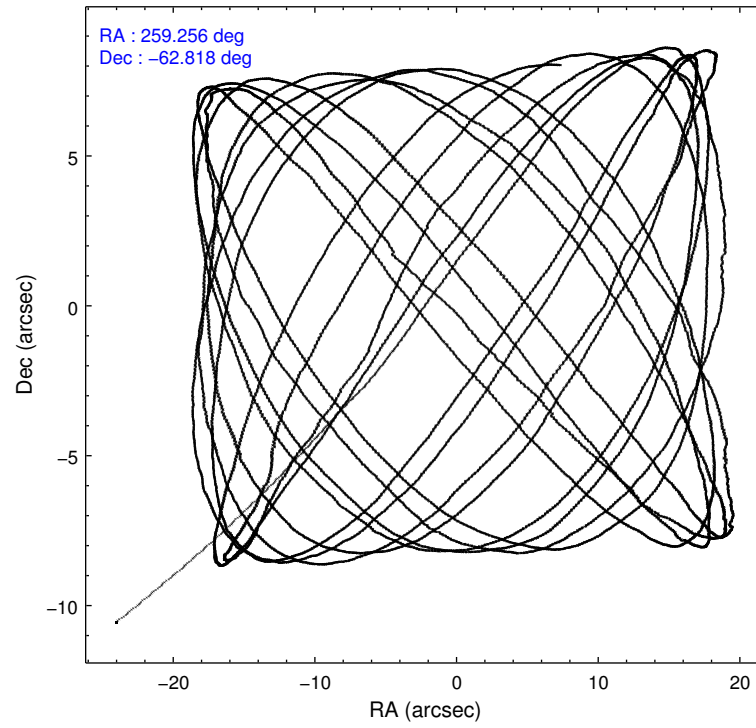
	ccd 5	ccd 6	ccd 7	ccd 8
grade 0 events	9091	1668	2976	2923
	16%	4%	5%	6%
grade 1 events	95	8	79	19
	0%	0%	0%	0%
grade 2 events	6982	802	5165	2151
	12%	2%	10%	4%
grade 3 events	1333	622	2452	1027
	2%	1%	4%	2%
grade 4 events	1270	570	2407	956
	2%	1%	4%	2%
grade 5 events	3831	1506	4370	2022
	6%	4%	8%	4%
grade 6 events	11585	771	11143	2806
	20%	2%	22%	5%
grade 7 events	22534	28604	21167	35290
	39%	82%	42%	74%

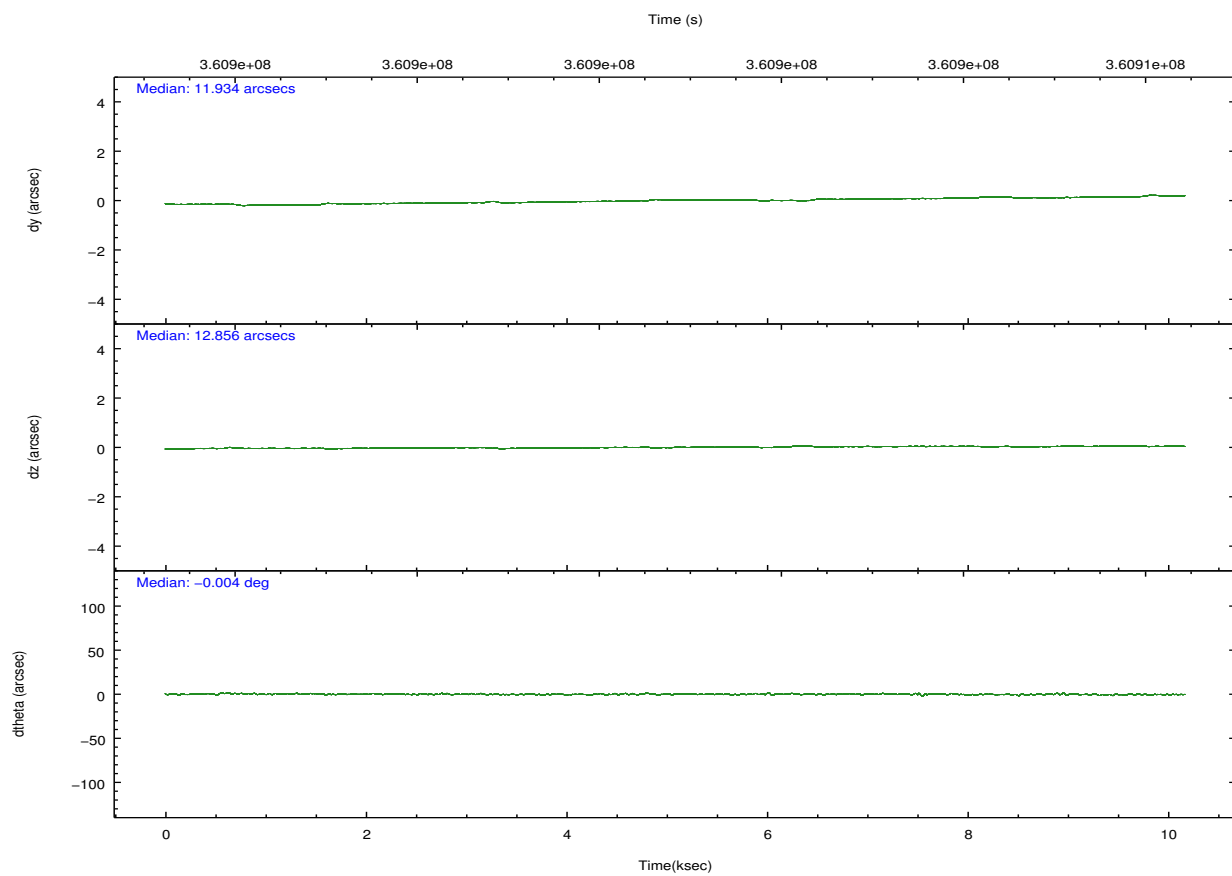
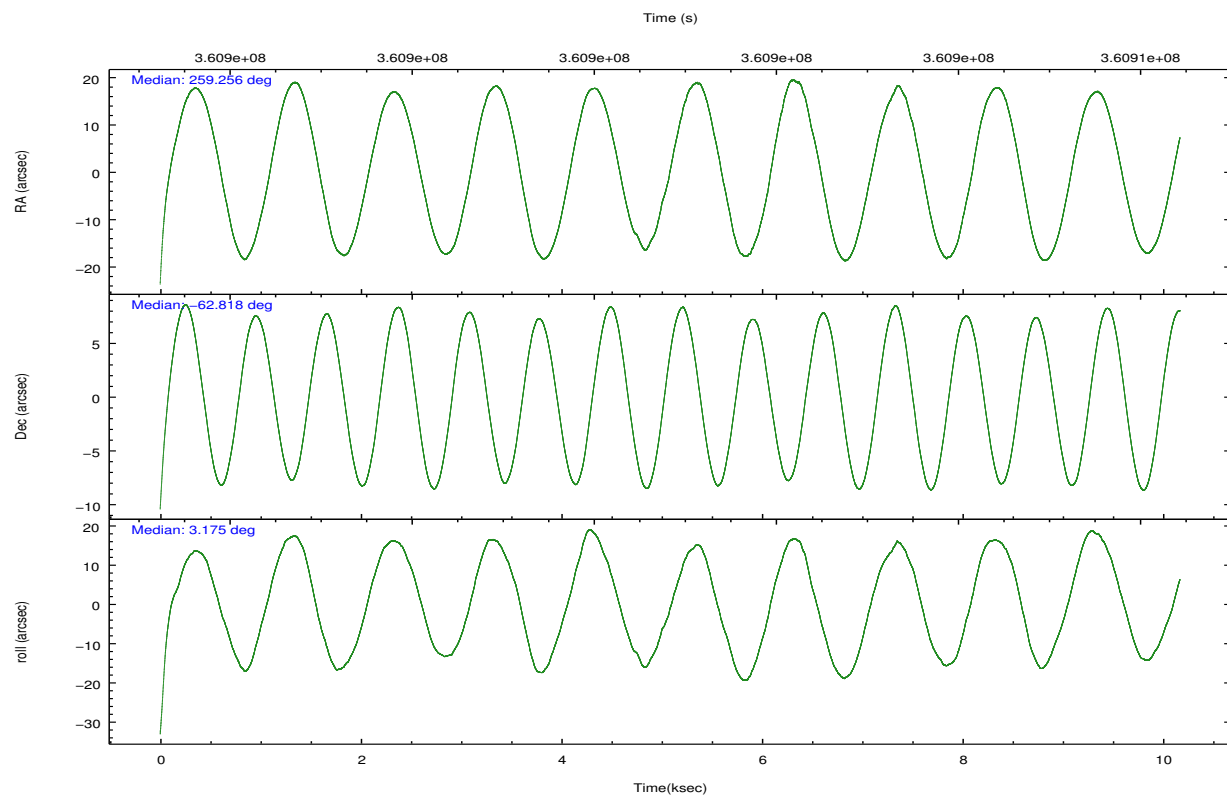


## 2.2 Compared Parameters

Parameter	Planned	Actual	Parameter	Planned	Actual
Instrument	ACIS	ACIS	Obspar format version number	7	7
Detector	ACIS-5678	ACIS-5678	Obspar file type	PREDICTED	ACTUAL
Grating	NONE	NONE	Obspar update status	NONE	UPDATED
Data mode	FAINT	FAINT	Number of optional ACIS chips dropped	0	0
Observation mode	POINTING	POINTING	On-chip summing requested	N	N
[deg] Pointing RA	259.206950	259.2565941426203	Subarray requested	CUSTOM	1/4
[deg] Pointing Dec	-62.833062	-62.81775341329778	Subarray start row	385	385
[deg] Pointing Roll	2.982040	3.182824017866746	Subarray row count	256	256
[mm] SIM focus pos	-0.684267	-0.6828225247311905	Alternating exposures requested	N	N
[mm] SIM defocus	0	0.001444936568705701	[s] Primary exposure time	0.000000	1
[mm] SIM translation stage pos	-190.132523	-190.1425803651734			
[mm] SIM translation stage offset	0	0.01005778216563158			
[s] Observation start time (MET)	360895906.184000	360894391.34277			
Observation start date	2009-06-09T00:50:40	2009-06-09T00:26:31			
[s] Observation end time (MET)	360905906.184000	360907179.75591			
Observation end date	2009-06-09T03:37:20	2009-06-09T03:59:39			
Read mode	TIMED	TIMED			

## 2.3 Aspect



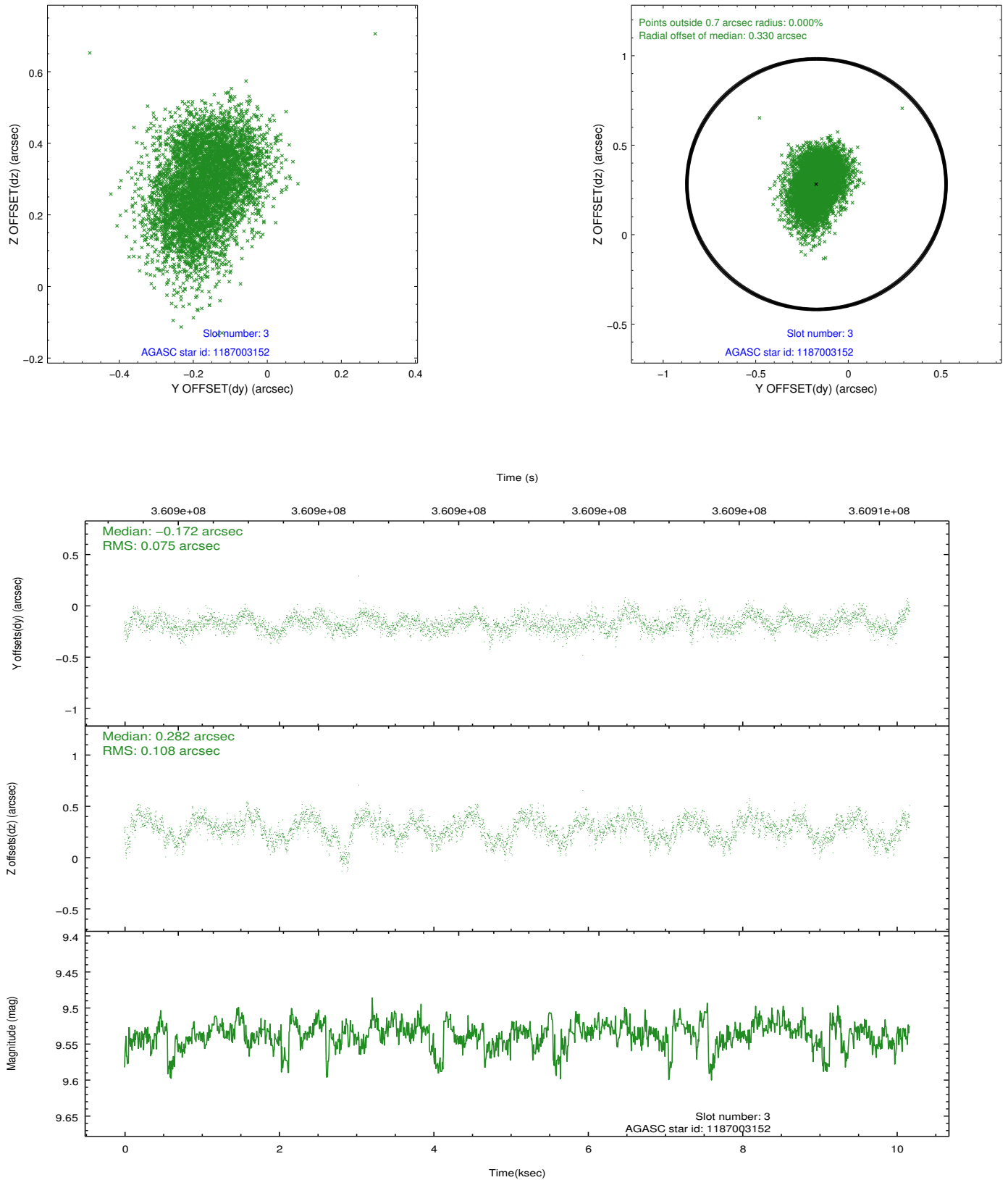


### Slot Statistics

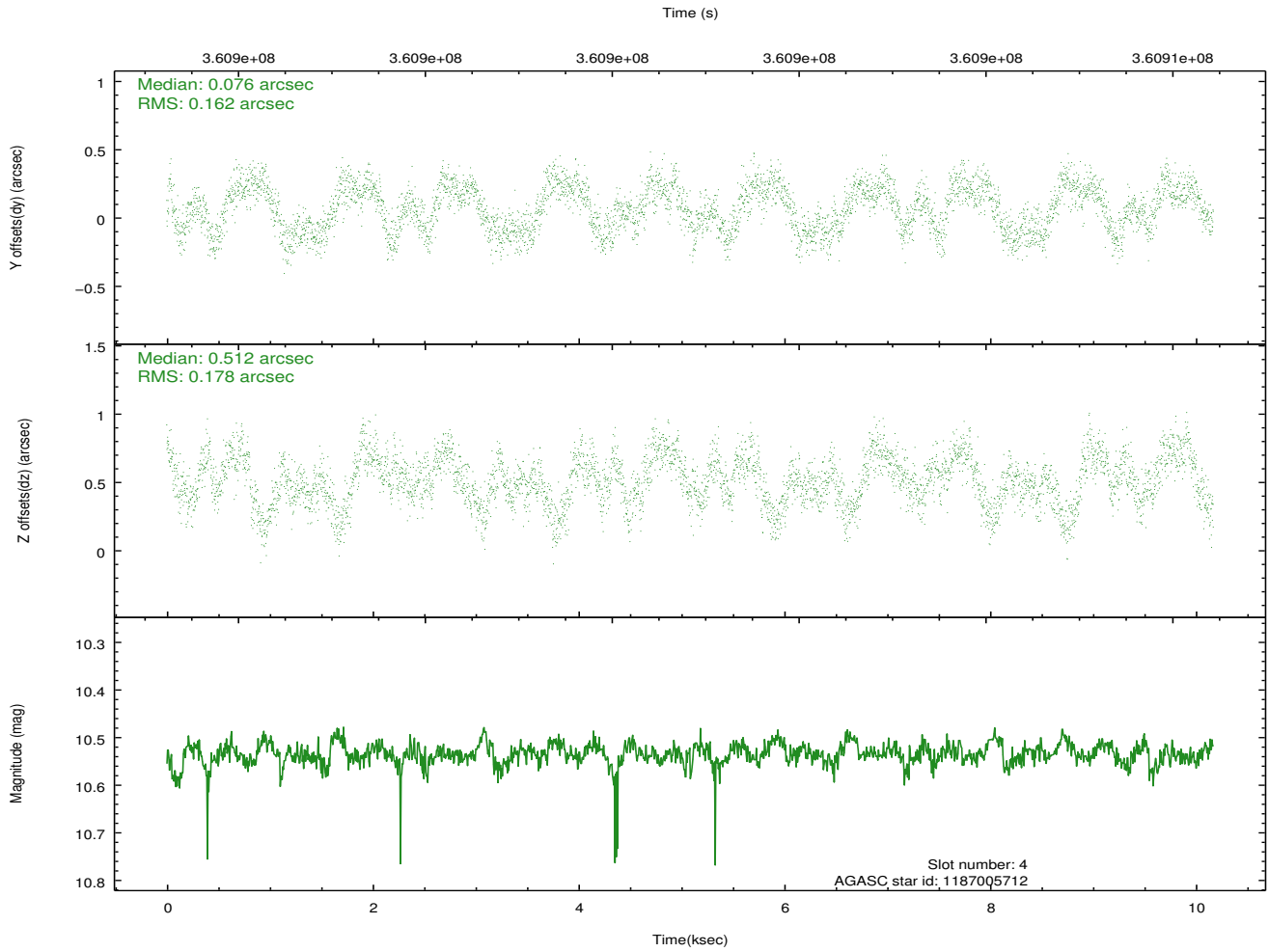
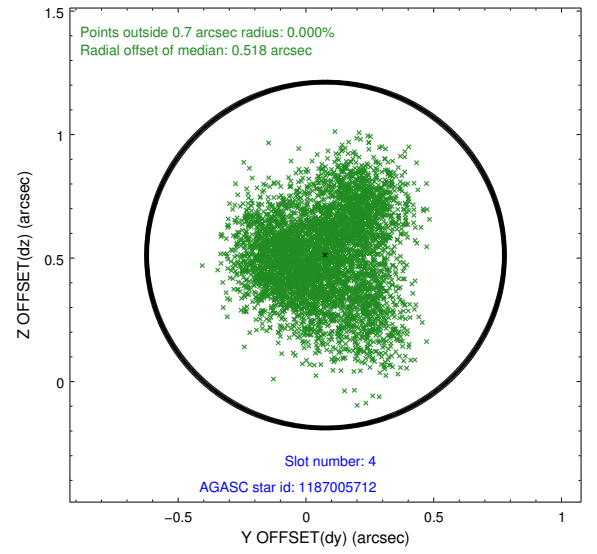
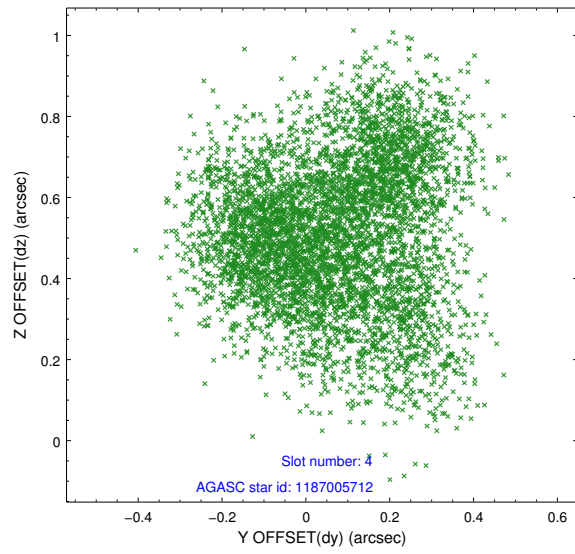
slot	status	id	mag	n_pts	med_dy	med_dz	dr1	dr2	ra	dec	mean_y	mean_z
0	FID	ACIS-S-2	6.96	2481	0.021	-0.045	0.006	0.012	0.000000	0.000000	-764.80	-1734.17
1	FID	ACIS-S-5	7.09	2480	-0.090	0.039	0.007	0.012	0.000000	0.000000	-1818.25	167.36
2	FID	ACIS-S-6	7.19	2481	0.044	0.014	0.006	0.010	0.000000	0.000000	396.28	811.81
3	GUIDE	1187003152	9.54	4952	-0.172	0.282	0.140	0.223	259.688405	-63.307332	689.07	-1748.45
4	GUIDE	1187005712	10.53	4952	0.076	0.512	0.262	0.399	258.429980	-63.298362	-1341.84	-1615.38
5	GUIDE	1187015832	8.18	4962	-0.102	-0.238	0.111	0.169	260.132419	-62.192136	1671.43	2211.59
6	GUIDE	1187015888	10.03	4953	0.117	0.117	0.154	0.243	257.825503	-62.822896	-2266.71	130.32
7	GUIDE	1187006144	10.31	4862	0.079	-0.677	0.155	0.259	258.352232	-63.327424	-1472.23	-1715.87

## 2.4 Star Slots

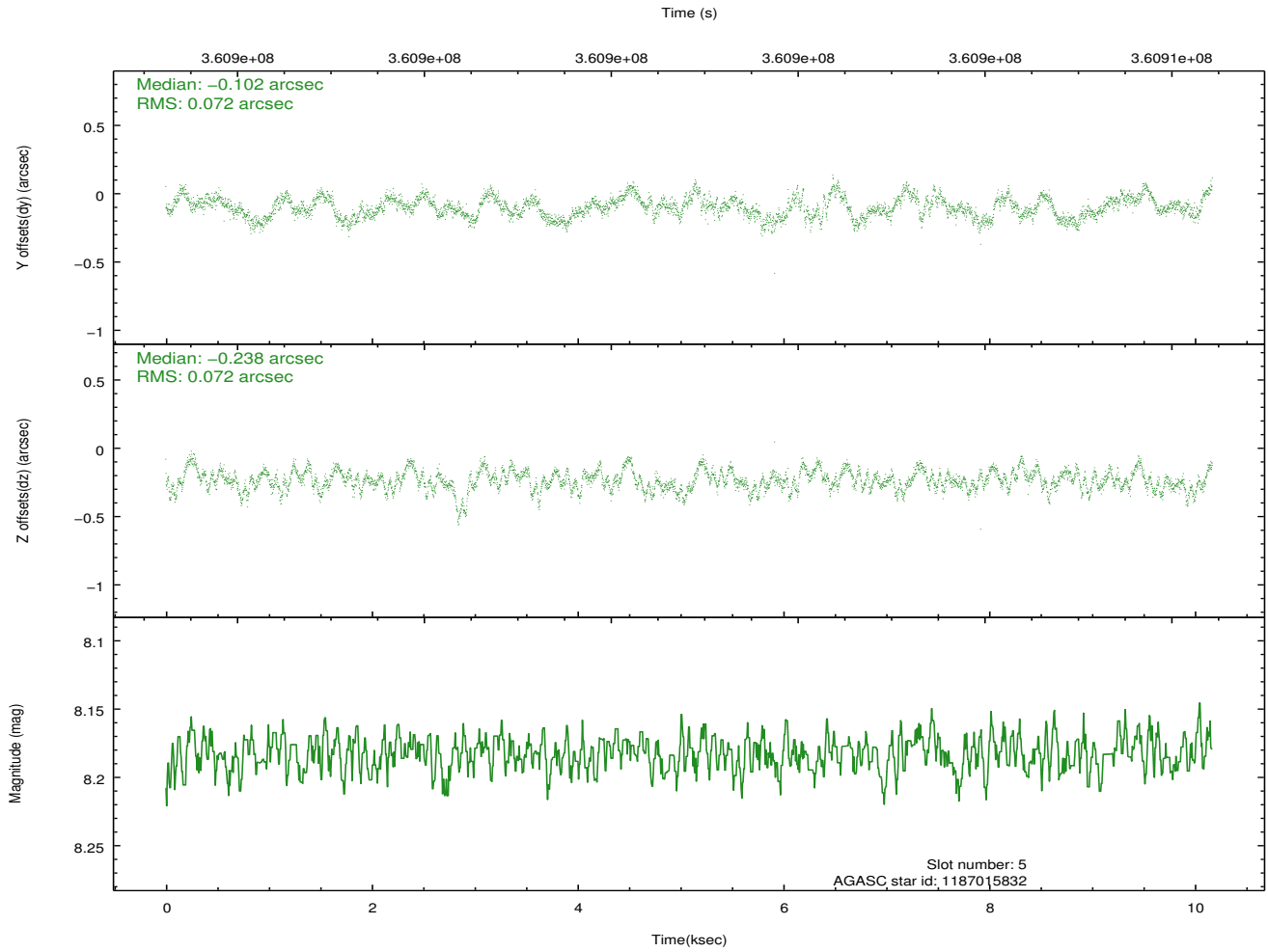
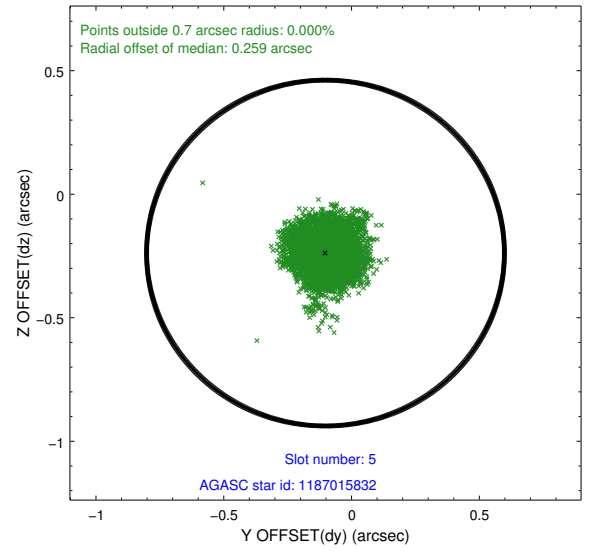
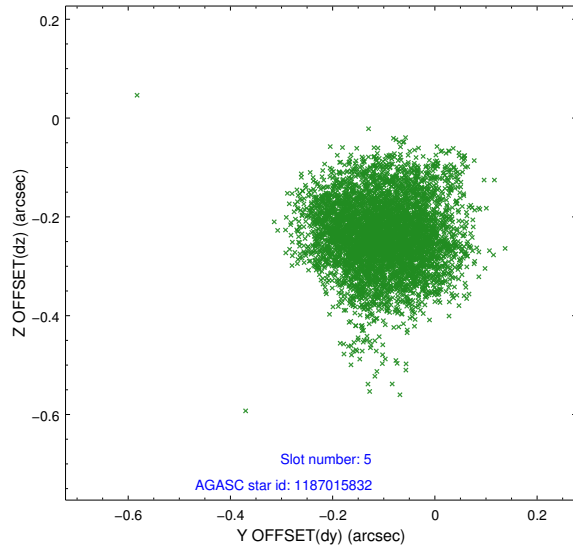
### 2.4.1 Slot 3



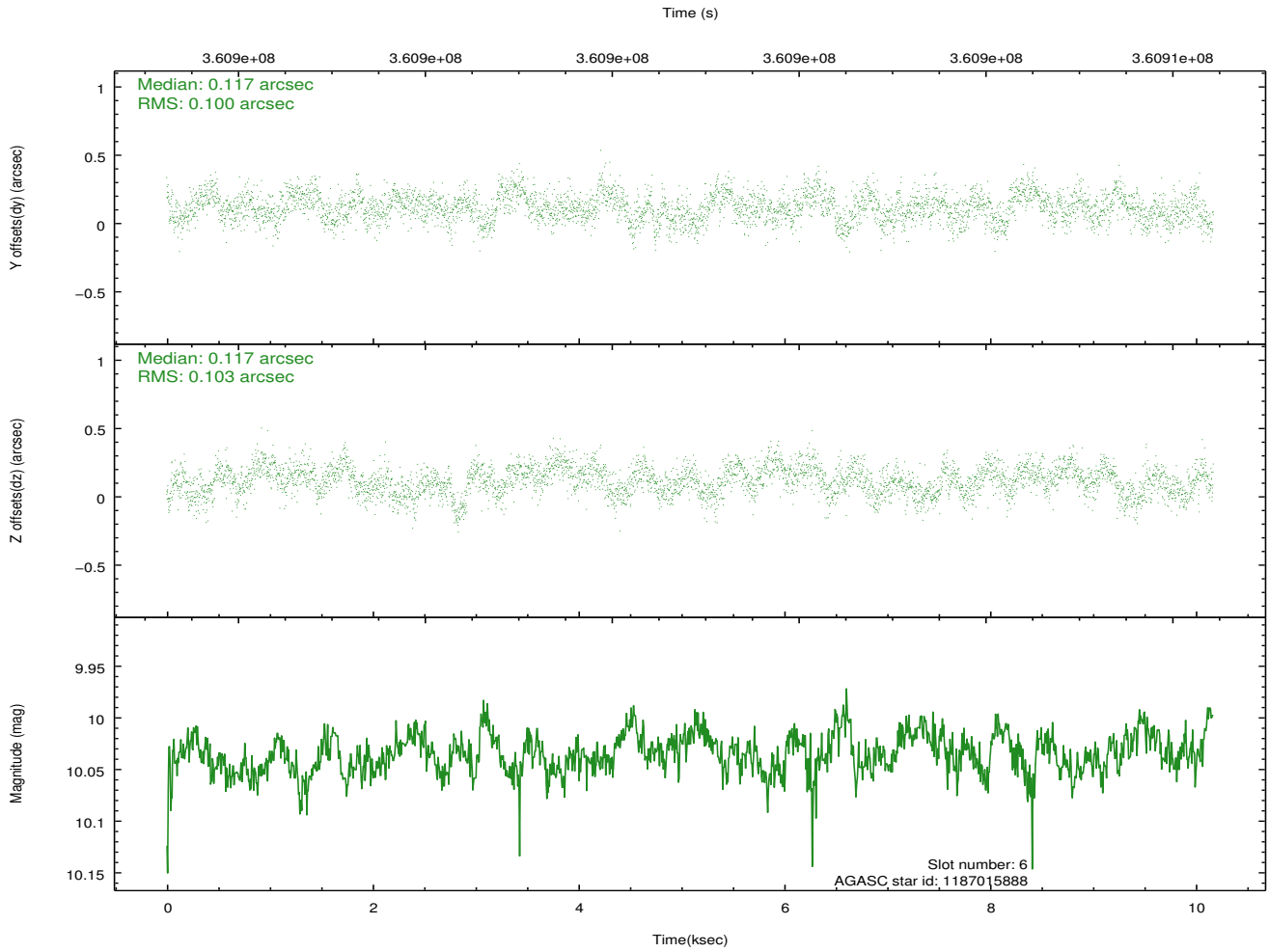
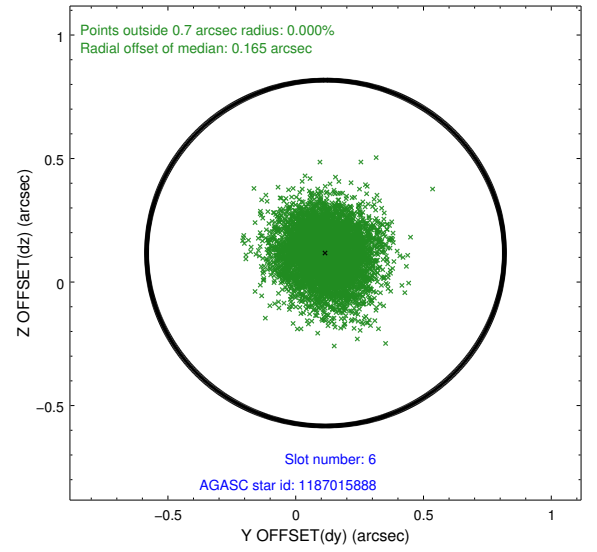
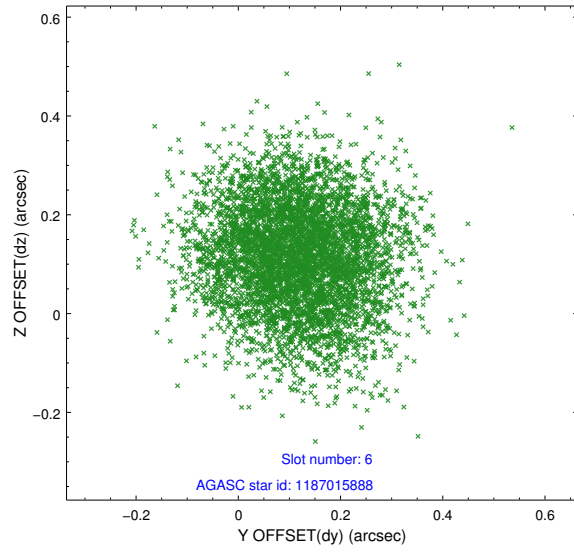
## 2.4.2 Slot 4



### 2.4.3 Slot 5

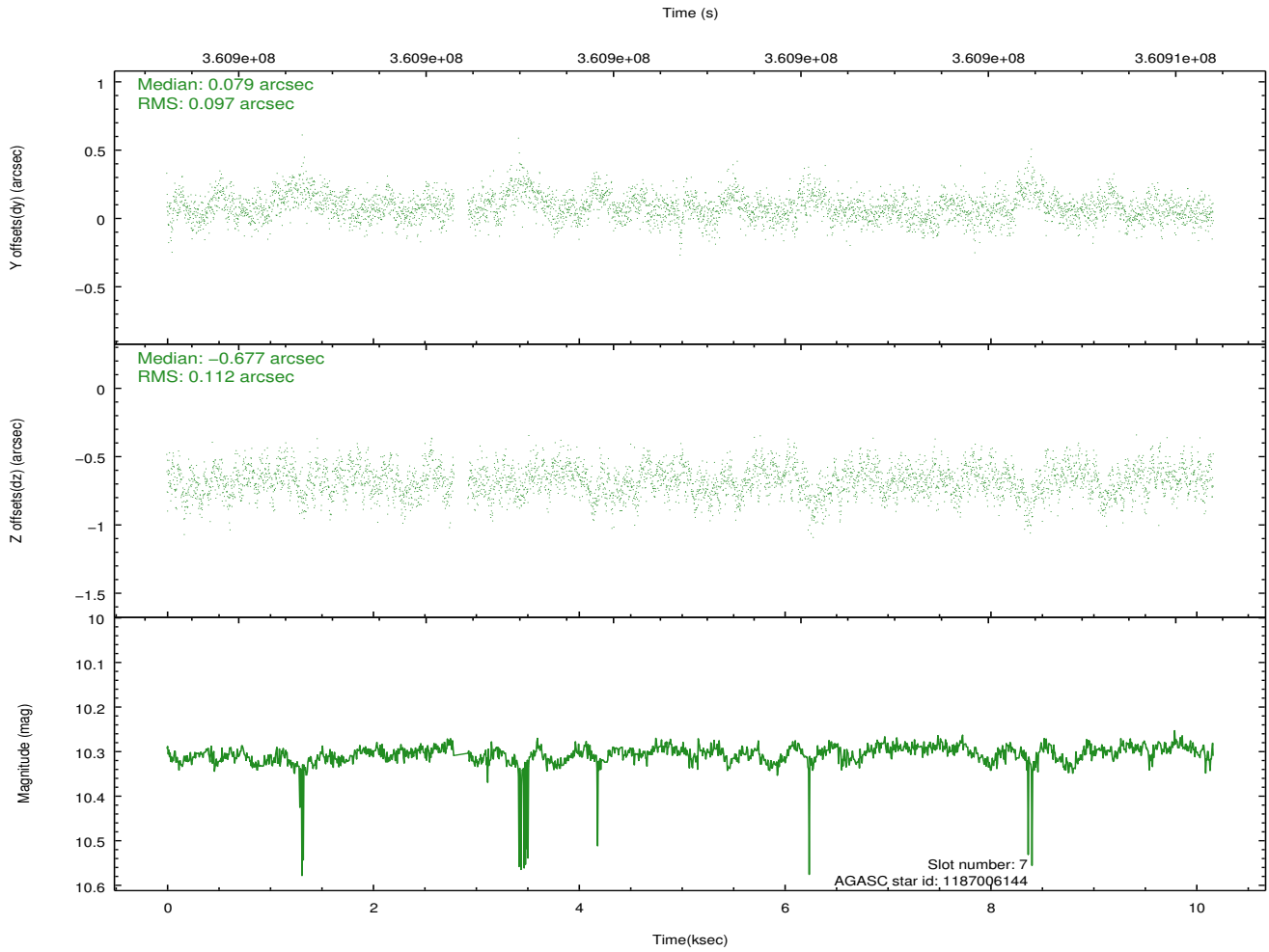
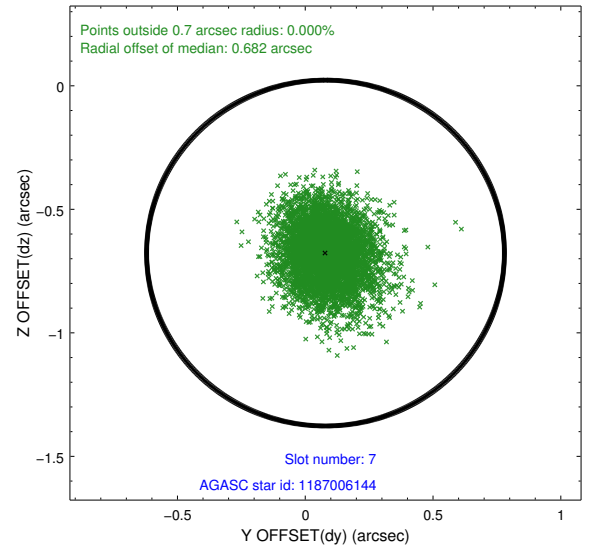
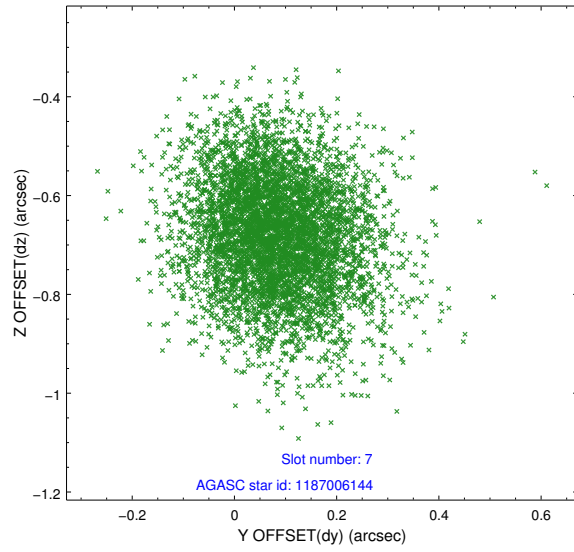


## 2.4.4 Slot 6



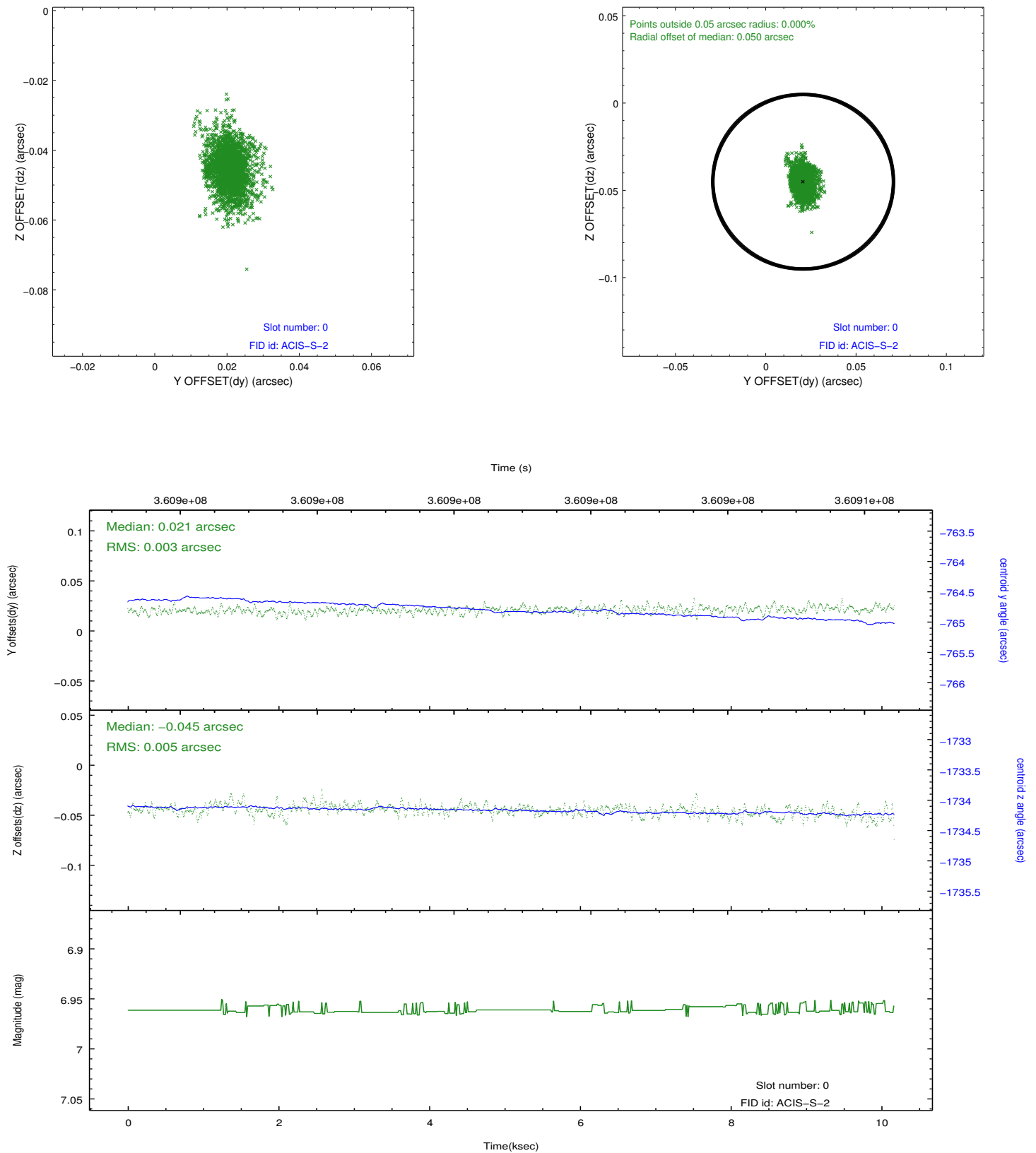


## 2.4.5 Slot 7

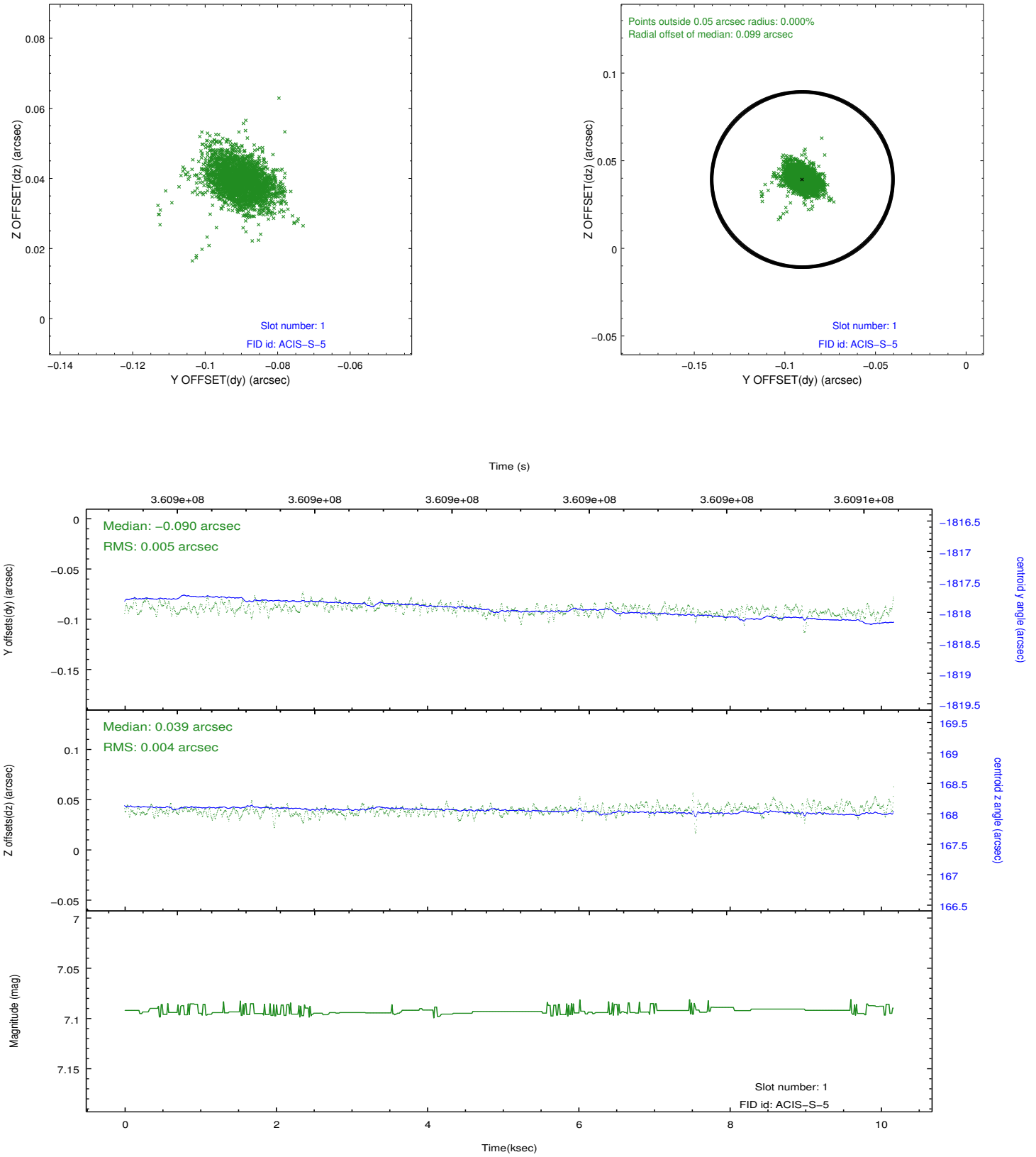


## 2.5 FID Slots

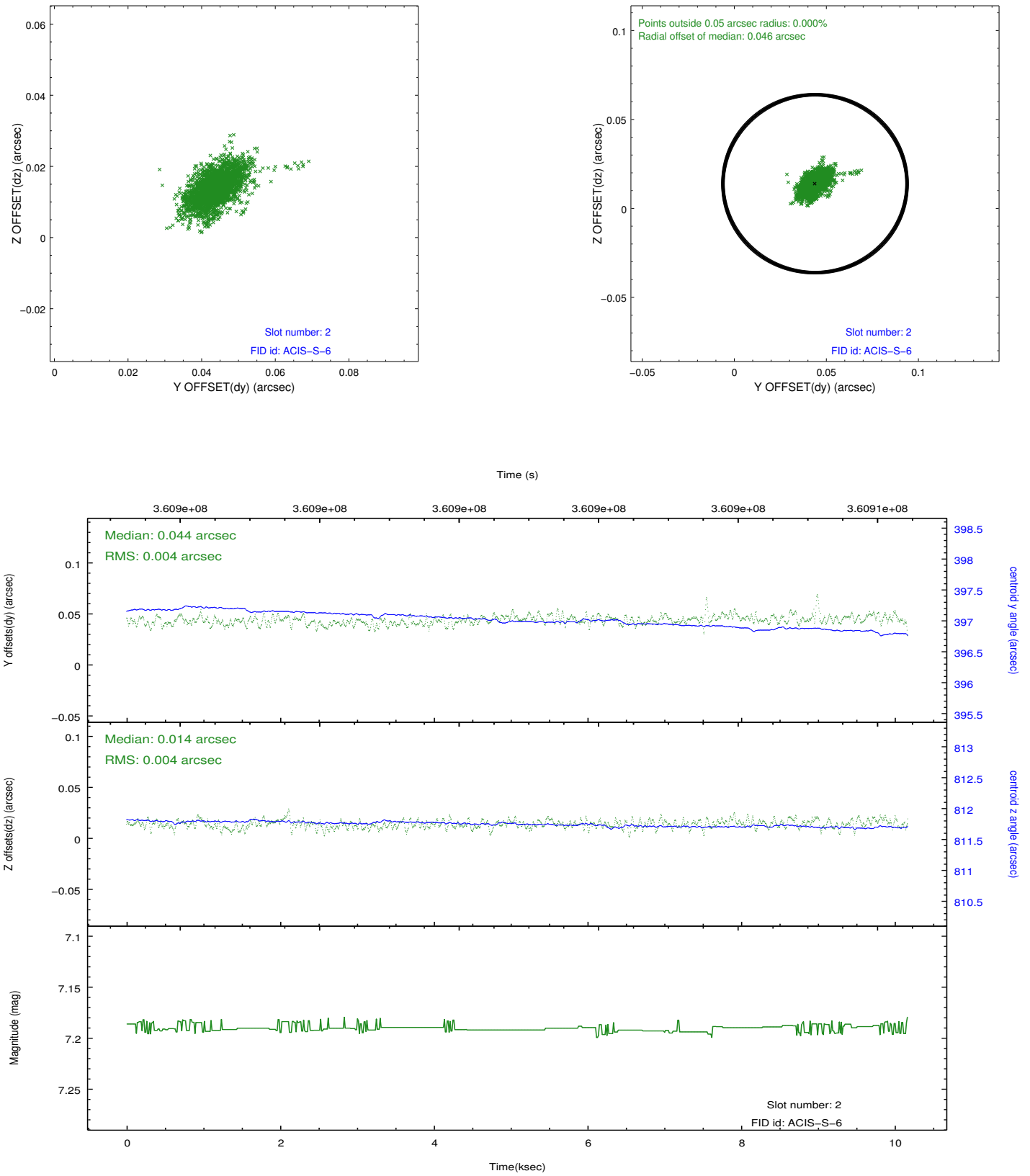
### 2.5.1 Slot 0



## 2.5.2 Slot 1



### 2.5.3 Slot 2



## A Summary

### A.1 Status

V&V Scientist	Jen Lauer
V&V Date (YYYY-MM-DD)	2012.06.12
V&V Edition	1
V&V Disposition and Status	OK
V&V Charge Time	10.169

### A.2 Comments