

V&V Reference Report

L2 ASCDS Version : 8.4.5

Observation 10569 - L2 Version 2
Chandra X-Ray Center

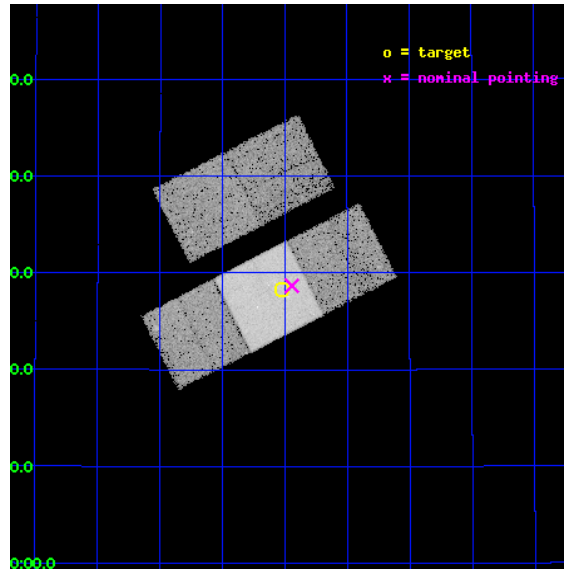
L2 Processing Date : Jun 12 2012

Contents

1	Front	2
2	OBI	3
2.1	OBI	3
2.1.1	Images	3
2.1.2	Bias	3
2.1.3	Parameters	4
2.1.4	Events	4
2.2	Compared Parameters	5
2.3	Aspect	6
2.4	Star Slots	9
2.4.1	Slot 3	9
2.4.2	Slot 4	10
2.4.3	Slot 5	11
2.4.4	Slot 6	12
2.4.5	Slot 7	13
2.5	FID Slots	14
2.5.1	Slot 0	14
2.5.2	Slot 1	15
2.5.3	Slot 2	16
A	Summary	17
A.1	Status	17
A.2	Comments	17

1 Front

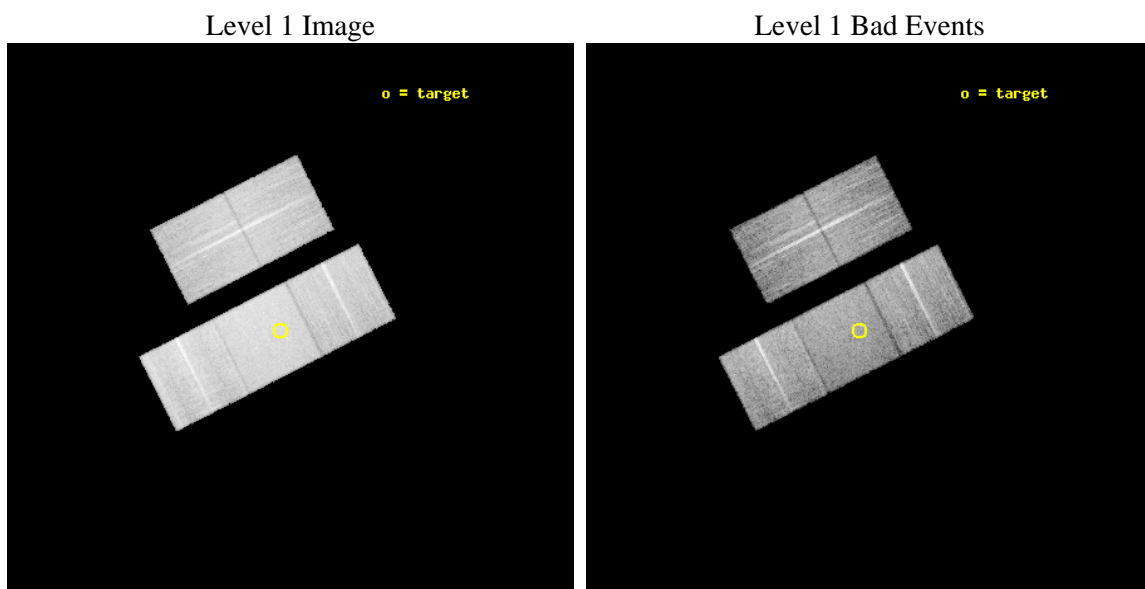
seq_num	600762	Sequence number
obs_id	10569	Observation id
title	The Most Luminous ULXs	Proposal title
observer	Douglas Swartz	Principal investigator
object	Arp 86	Source name
dtcycle	0	
cycle	P	events from which exps? Prim/Second/Both
ra_targ	356.756667	Observer's specified target RA [deg]
dec_targ	29.471389	Observer's specified target Dec [deg]
ra_nom	356.73578681704	Nominal RA [deg]
dec_nom	29.477844403296	Nominal Dec [deg]
roll_nom	153.0041903656	Nominal Roll [deg]
revision	2	Processing version of data
ontime	12145.800093412	Sum of GTIs [s]
livetime	11987.106273584	Livetime [s]
ontime2	12142.659063041	Sum of GTIs [s]
ontime3	12145.800093412	Sum of GTIs [s]
ontime6	12145.800093412	Sum of GTIs [s]
ontime7	12145.800093412	Sum of GTIs [s]
ontime8	12145.800093412	Sum of GTIs [s]
l2events	127537	Number of level 2 events



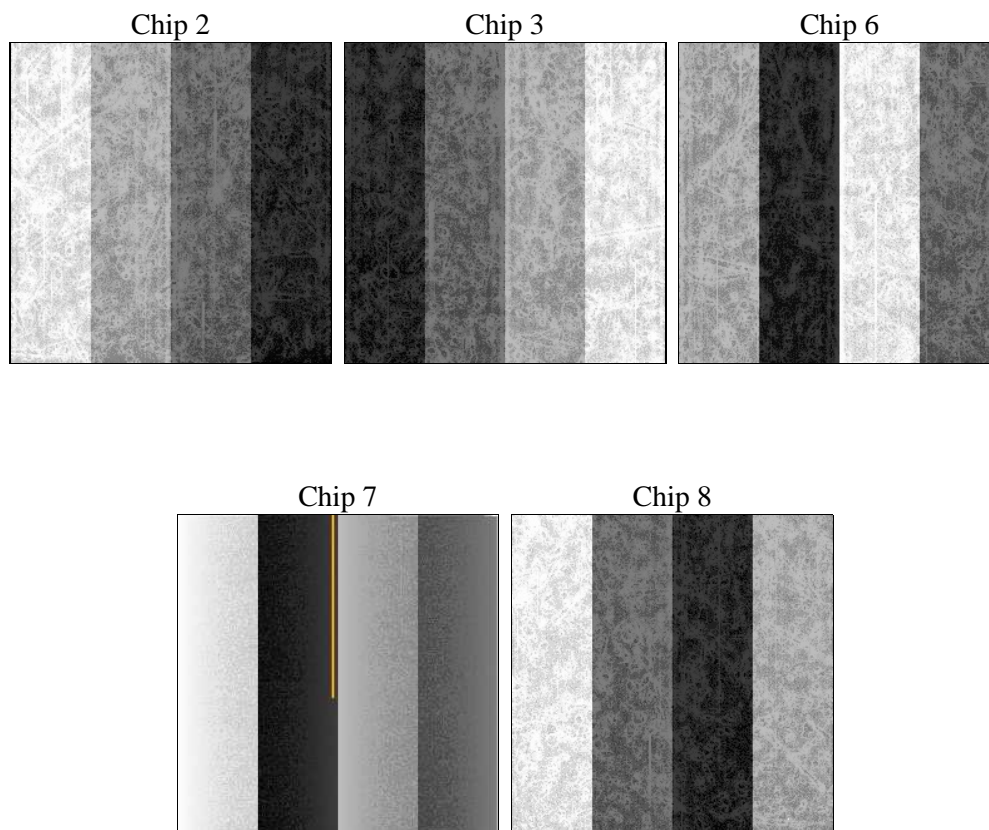
2 OBI

2.1 OBI

2.1.1 Images



2.1.2 Bias



2.1.3 Parameters

obi_num	2	Obi number	sched_exp_time	12000.000000	[s] Scheduled observation exposure time
ascdsver	8.4.5	Processing system revision	ontime	12145.800093412	Sum of GTIs [s]
caldsver	4.4.10	 	ontime2	12142.659063041	Sum of GTIs [s]
date	2012-06-12T14:06:53	Date and time of file creation	ontime3	12145.800093412	Sum of GTIs [s]
revision	2	Processing version of data	ontime6	12145.800093412	Sum of GTIs [s]
			ontime7	12145.800093412	Sum of GTIs [s]
			ontime8	12145.800093412	Sum of GTIs [s]
			l1events	794278	Number of level 1 events

2.1.4 Events

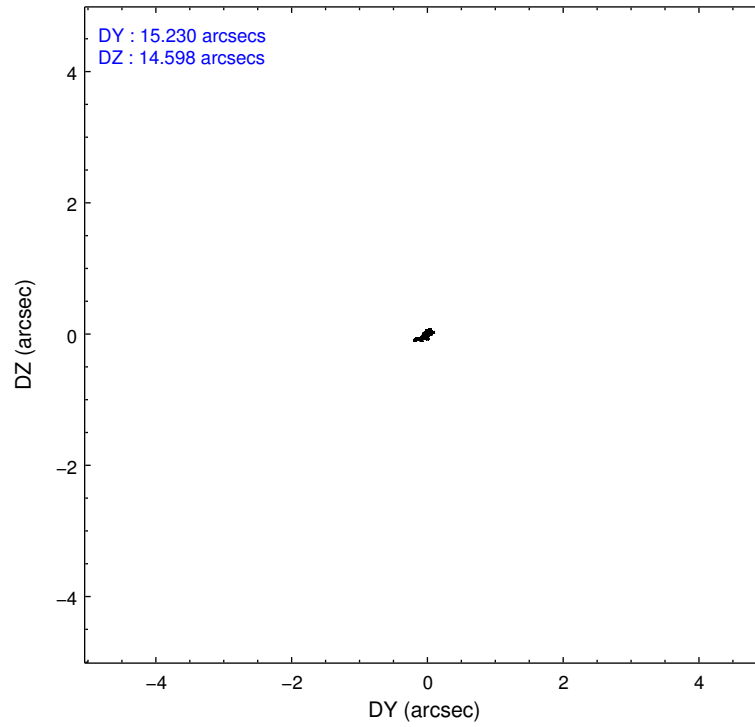
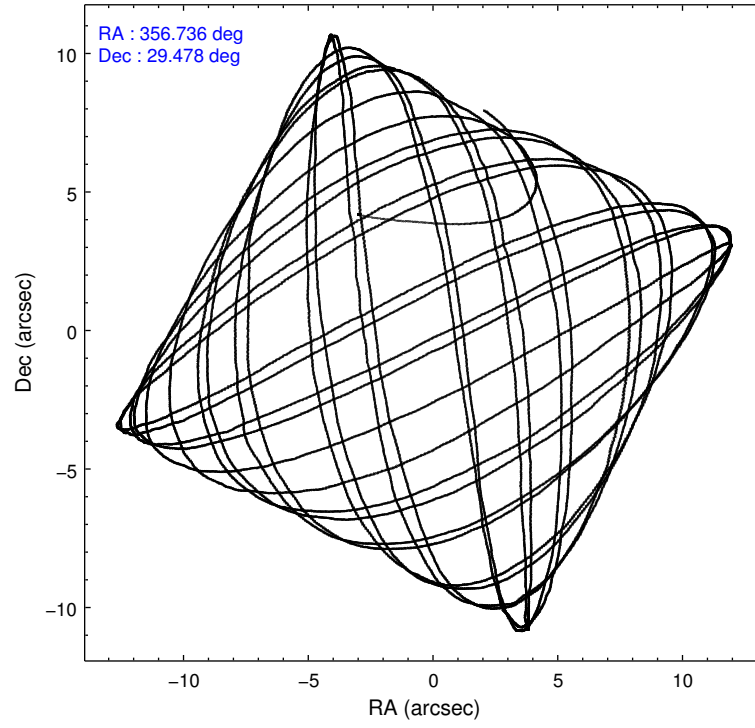
	ccd 2	ccd 3	ccd 6	ccd 7	ccd 8
level 1 events	136781	134913	143302	198569	180713
rejected events	122328	119472	127888	124842	142213
rejected %	89%	88%	89%	62%	78%

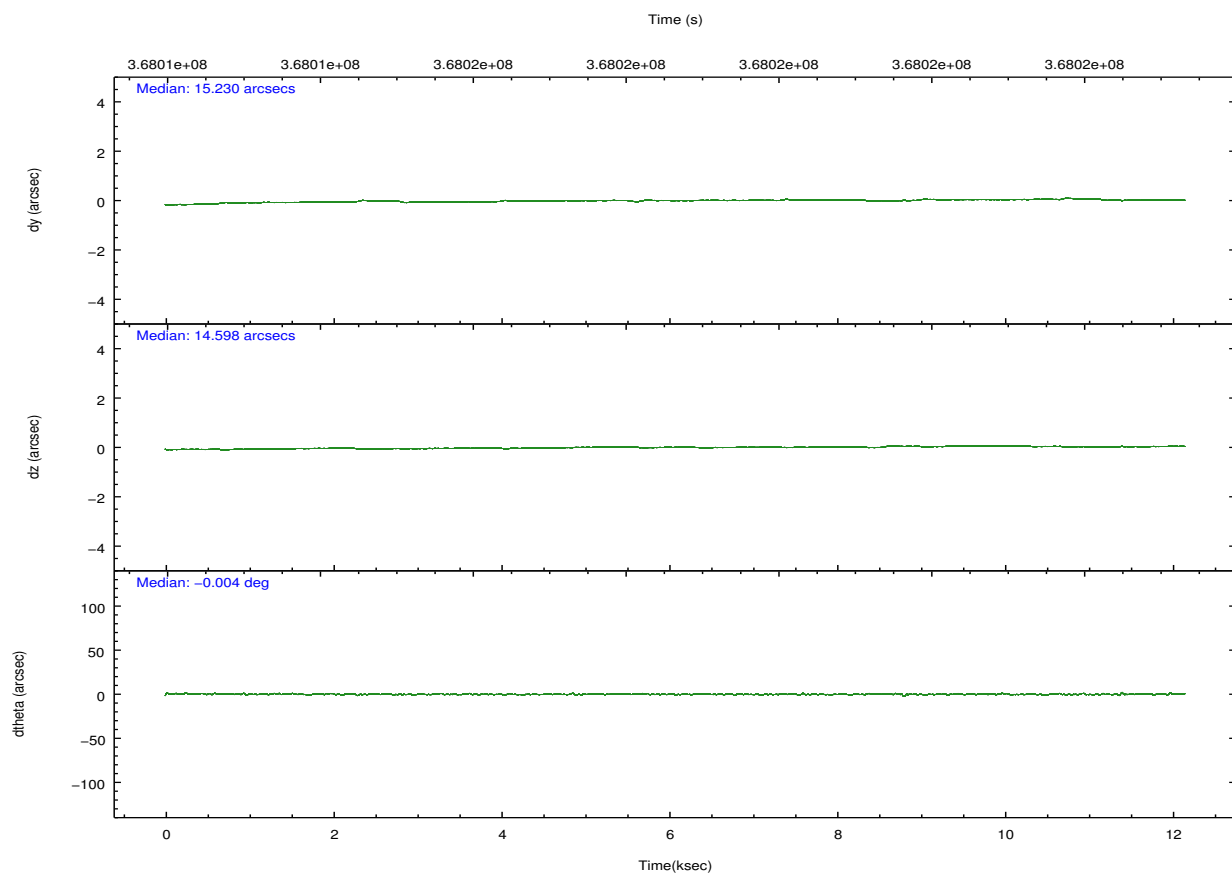
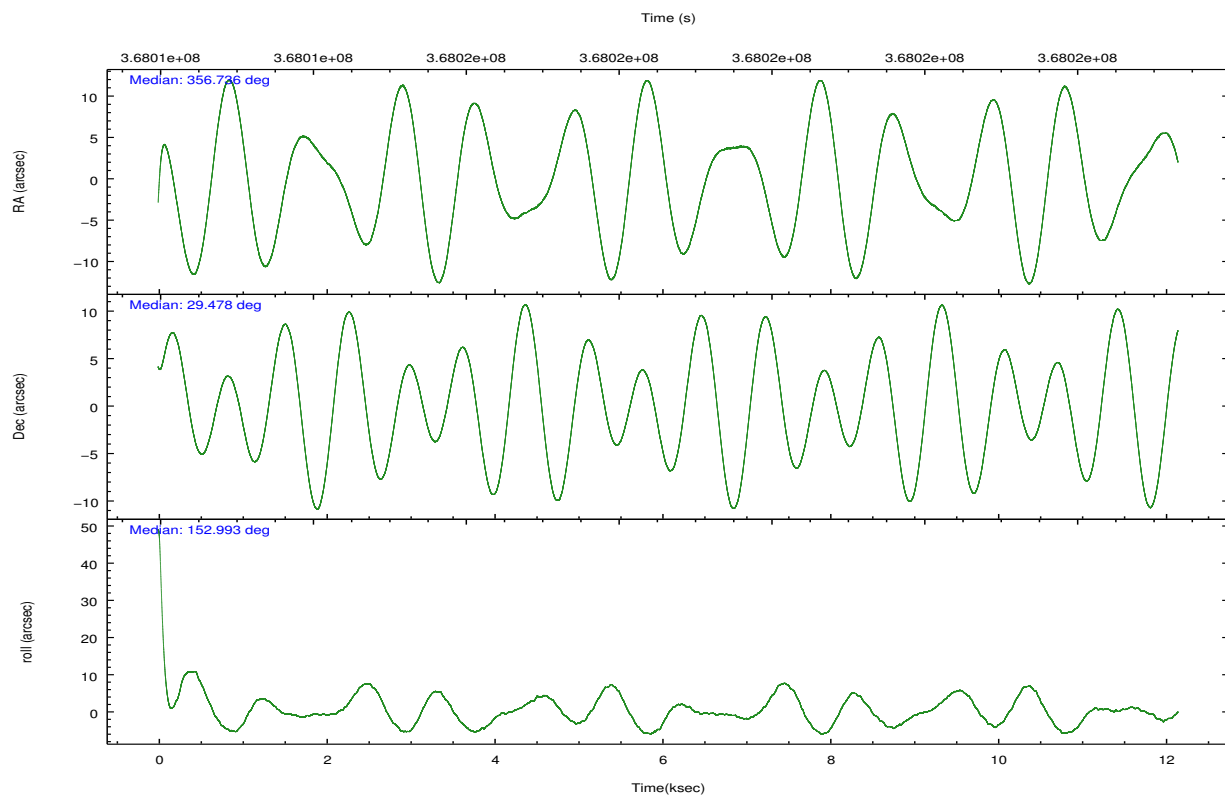
	ccd 2	ccd 3	ccd 6	ccd 7	ccd 8
grade 0 events	6705	7398	6466	7143	13189
	4%	5%	4%	3%	7%
grade 1 events	89	103	78	210	143
	0%	0%	0%	0%	0%
grade 2 events	3519	3332	3910	16792	9830
	2%	2%	2%	8%	5%
grade 3 events	1537	1668	1543	6794	4297
	1%	1%	1%	3%	2%
grade 4 events	1482	1627	1593	6666	3902
	1%	1%	1%	3%	2%
grade 5 events	5703	6795	6952	18382	9054
	4%	5%	4%	9%	5%
grade 6 events	2766	3023	3589	44239	11122
	2%	2%	2%	22%	6%
grade 7 events	114980	110967	119171	98343	129176
	84%	82%	83%	49%	71%

2.2 Compared Parameters

Parameter	Planned	Actual	Parameter	Planned	Actual
Instrument	ACIS	ACIS	Obspar format version number	7	7
Detector	ACIS-23678	ACIS-23678	Obspar file type	PREDICTED	ACTUAL
Grating	NONE	NONE	Obspar update status	NONE	UPDATED
Data mode	FAINT	FAINT	CCD I0 on	N	N
Observation mode	POINTING	POINTING	CCD I1 on	N	N
[deg] Pointing RA	356.767127	356.7357868170441	CCD I2 on	O1	Y
[deg] Pointing Dec	29.479640	29.47784440329578	CCD I3 on	O2	Y
[deg] Pointing Roll	152.832083	153.0041903656036	CCD S0 on	N	N
[mm] SIM focus pos	-0.684267	-0.6828225247311905	CCD S1 on	N	N
[mm] SIM defocus	0	0.001444936568705701	CCD S2 on	Y	Y
[mm] SIM translation stage pos	-190.132523	-190.1425803651734	CCD S3 on	Y	Y
[mm] SIM translation stage offset	0	0.01005778216563158	CCD S4 on	Y	Y
[s] Observation start time (MET)	368012712.184000	368011095.84886	CCD S5 on	N	N
Observation start date	2009-08-30T09:44:06	2009-08-30T09:18:15	Number of optional ACIS chips dropped	0	0
[s] Observation end time (MET)	368024712.184000	368026012.16211	On-chip summing requested	N	N
Observation end date	2009-08-30T13:04:06	2009-08-30T13:26:52	Subarray requested	NONE	NONE
Read mode	TIMED	TIMED	Alternating exposures requested	N	N
			[s] Primary exposure time	0.000000	3.1

2.3 Aspect



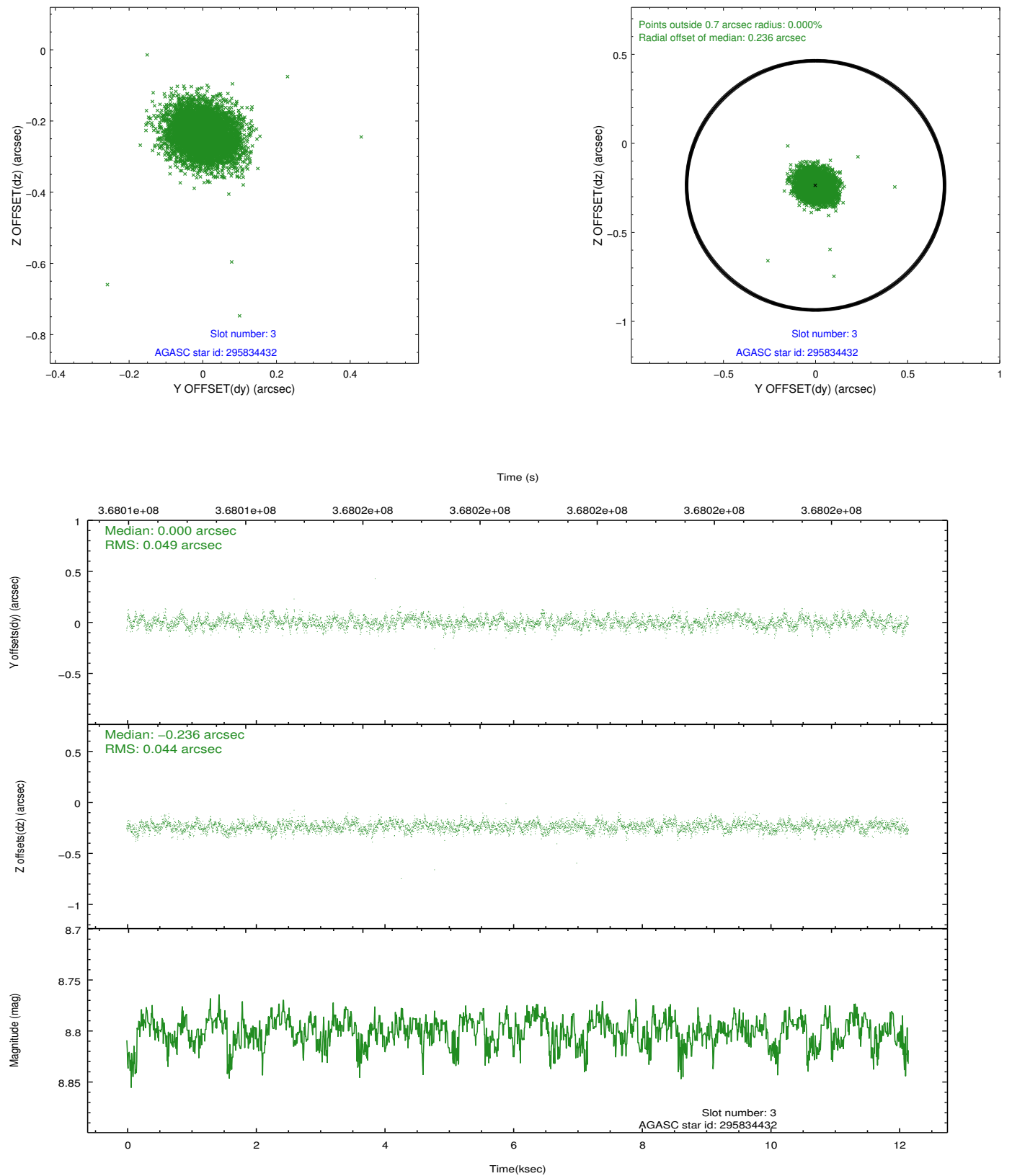


Slot Statistics

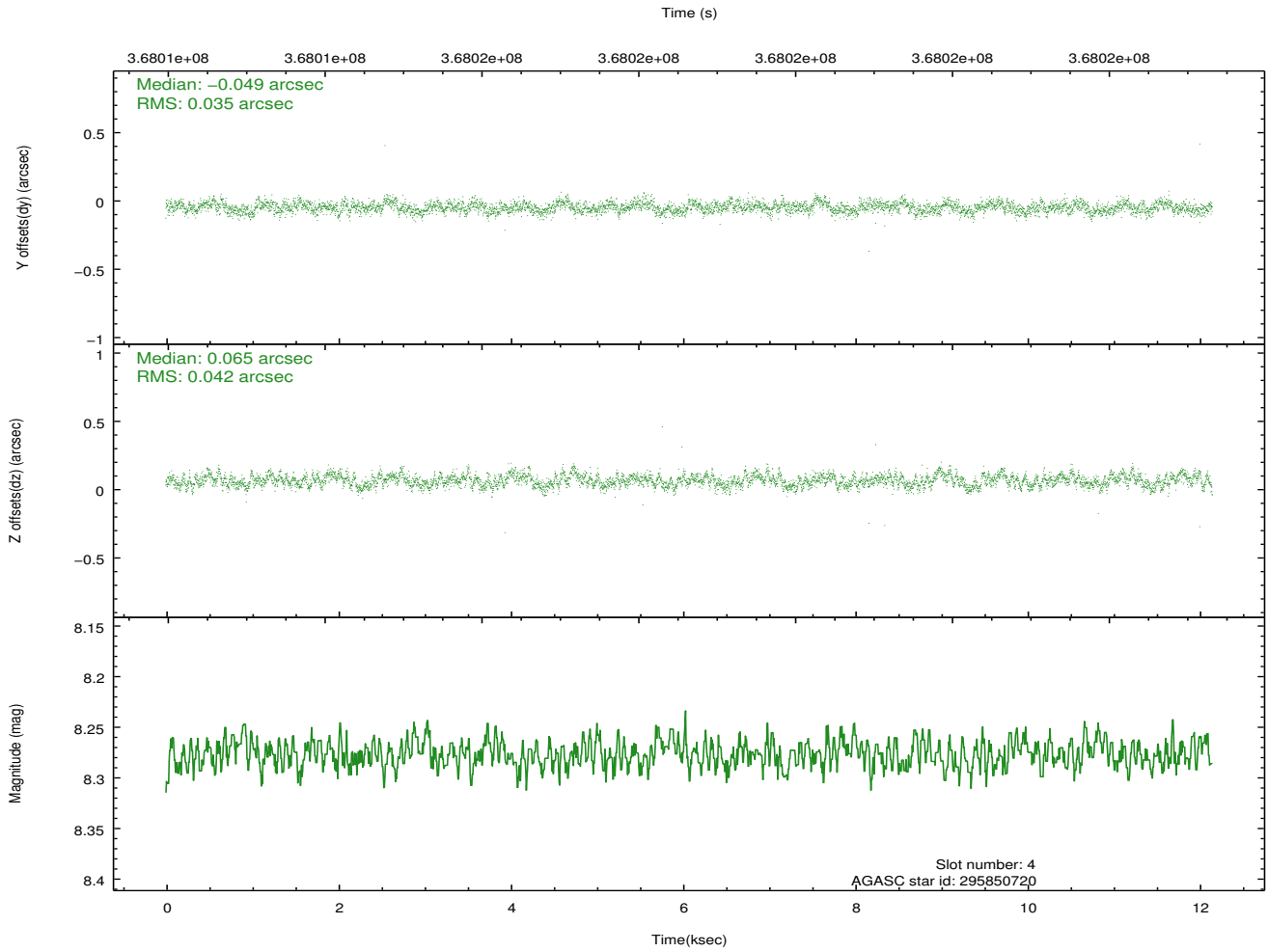
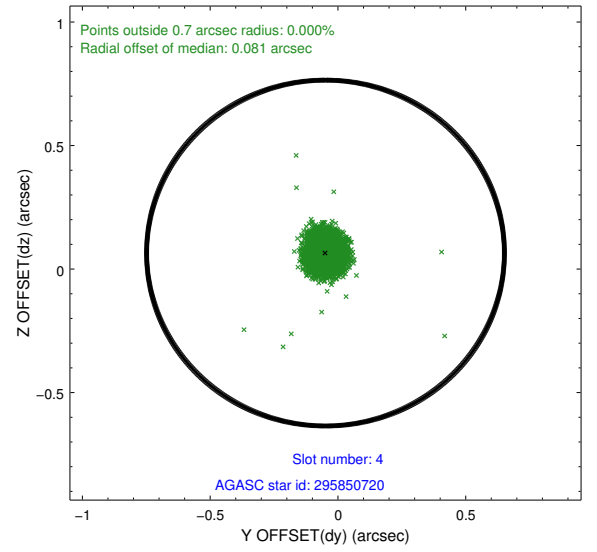
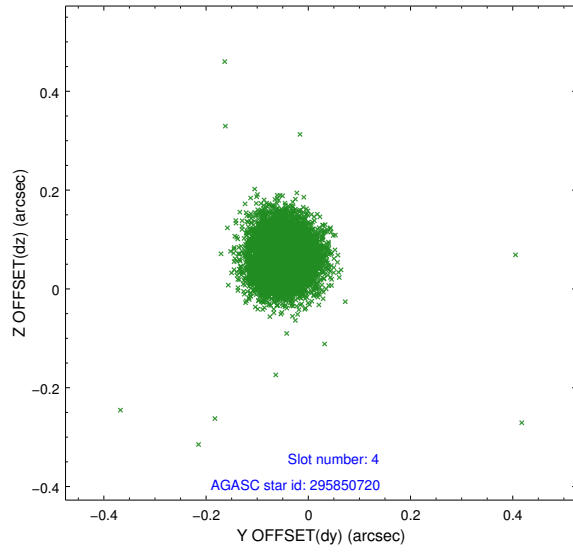
slot	status	id	mag	n_pts	med_dy	med_dz	dr1	dr2	ra	dec	mean_y	mean_z
0	FID	ACIS-S-1	7.03	2964	0.091	0.009	0.007	0.013	0.000000	0.000000	927.90	-1731.54
1	FID	ACIS-S-2	6.95	2964	-0.127	-0.048	0.006	0.010	0.000000	0.000000	-767.99	-1736.54
2	FID	ACIS-S-6	7.18	2964	0.016	0.043	0.006	0.012	0.000000	0.000000	393.34	809.41
3	GUIDE	295834432	8.80	5924	0.000	-0.236	0.068	0.112	357.053996	28.835752	-1863.09	1648.15
4	GUIDE	295850720	8.28	5924	-0.049	0.065	0.057	0.091	356.672859	29.004285	-517.91	1658.64
5	GUIDE	295980504	7.97	5925	0.096	0.214	0.087	0.133	357.419314	29.237327	-2218.35	-163.89
6	GUIDE	295966992	8.70	5922	-0.090	-0.019	0.082	0.135	357.323182	29.714840	-1158.42	-1550.62
7	GUIDE	295967880	8.61	5924	0.041	-0.024	0.075	0.117	357.360846	29.719694	-1254.54	-1620.67

2.4 Star Slots

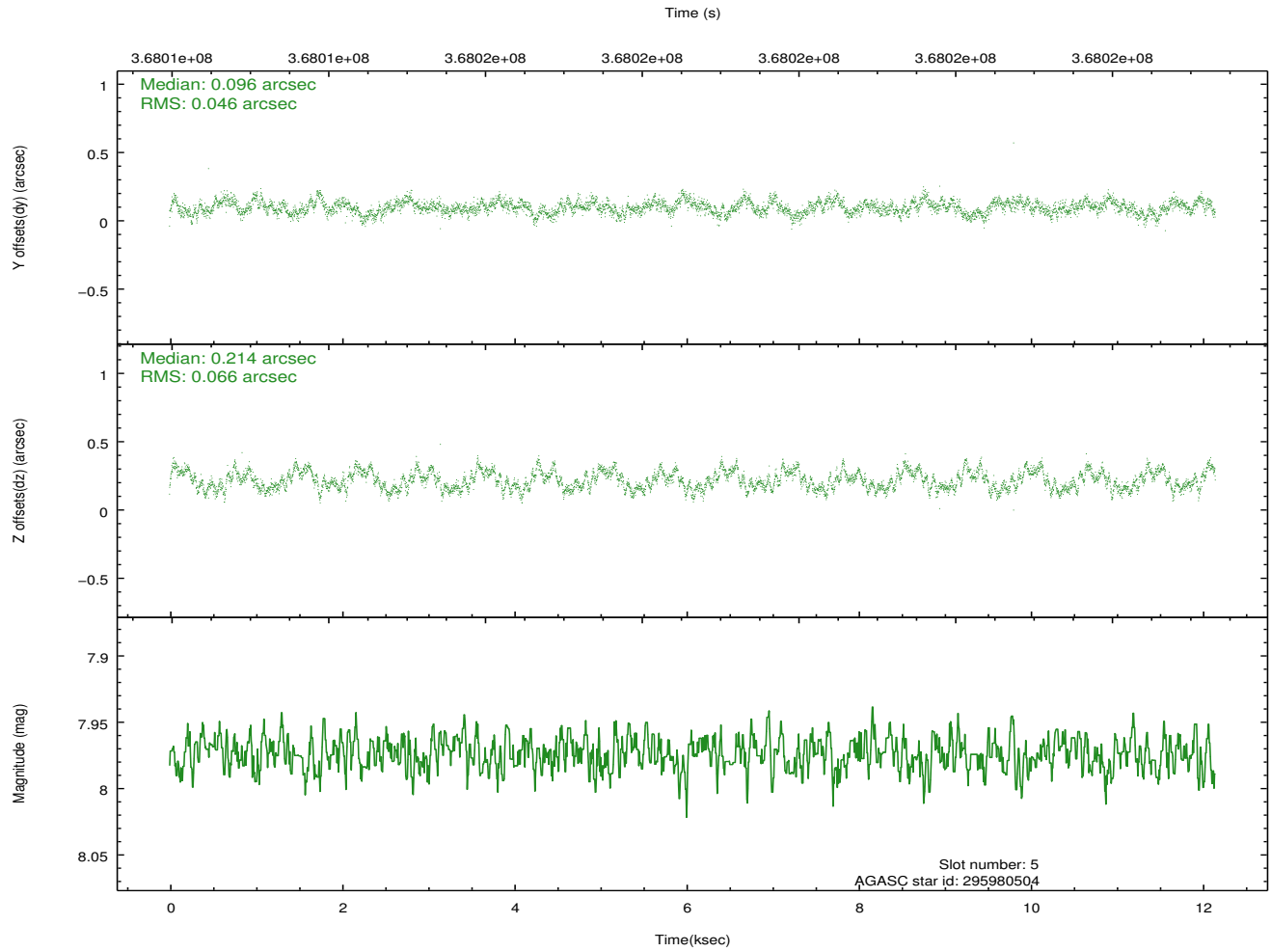
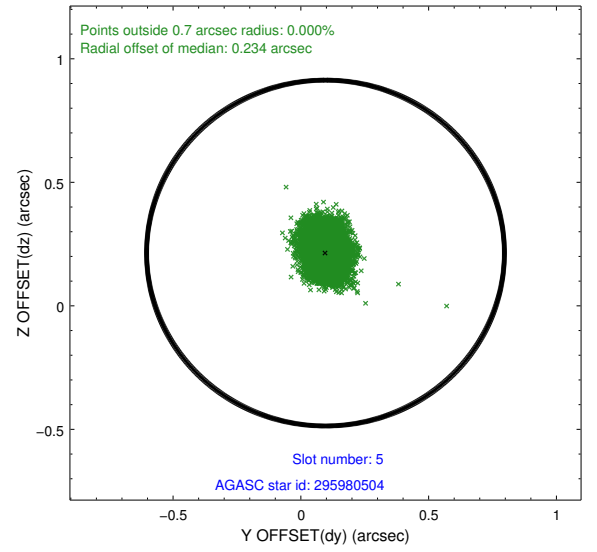
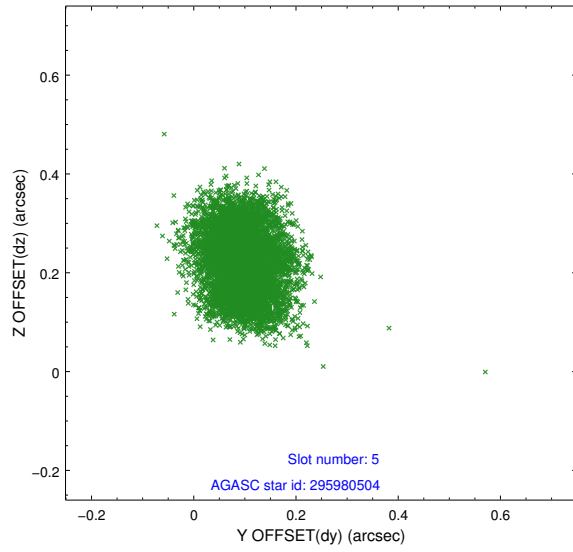
2.4.1 Slot 3



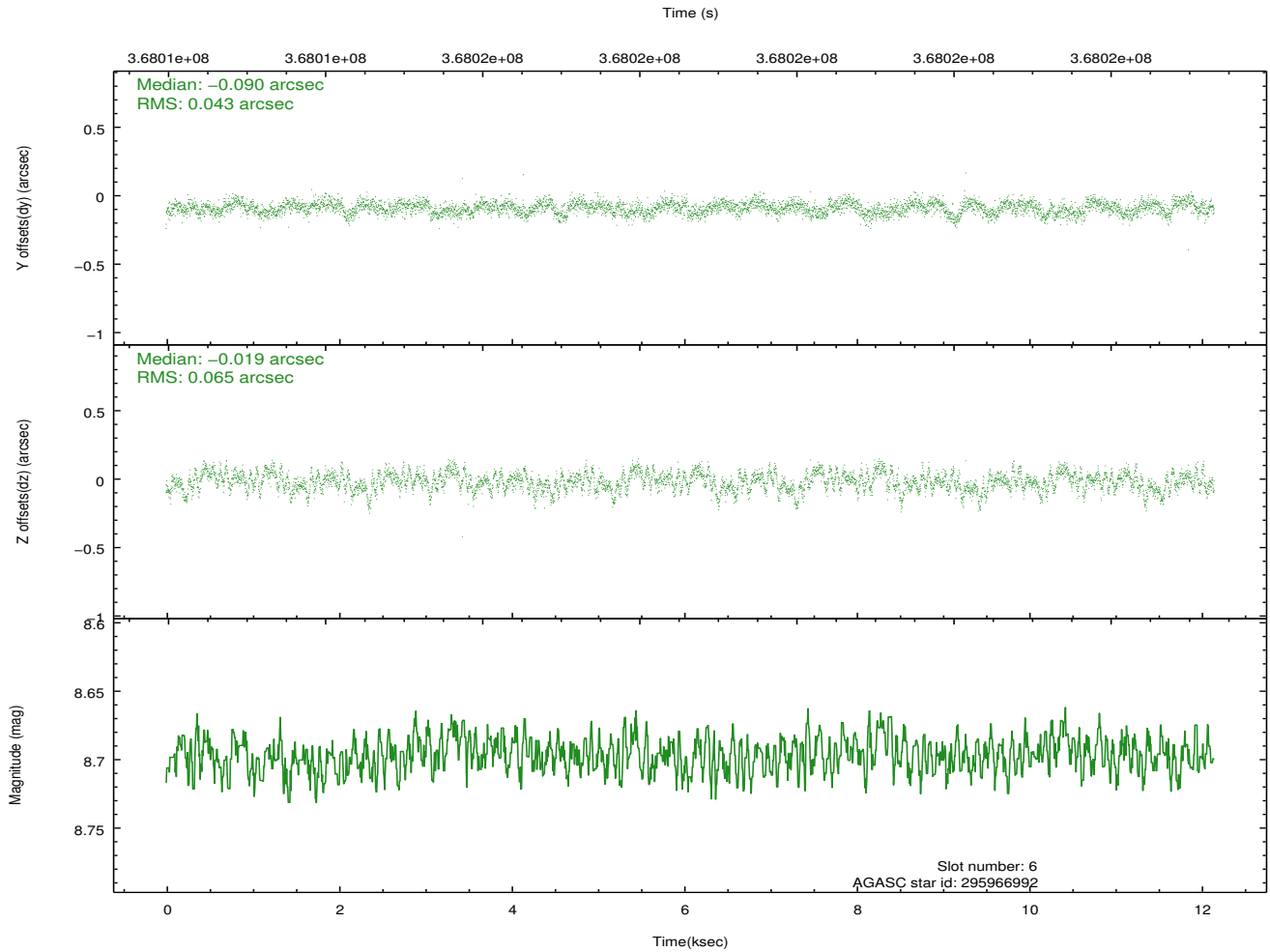
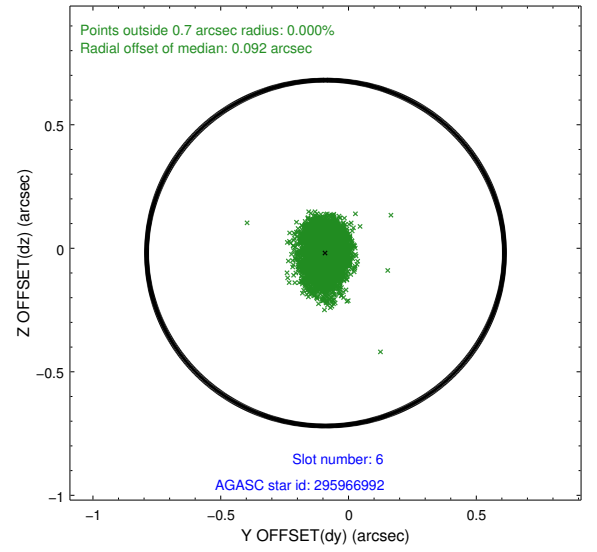
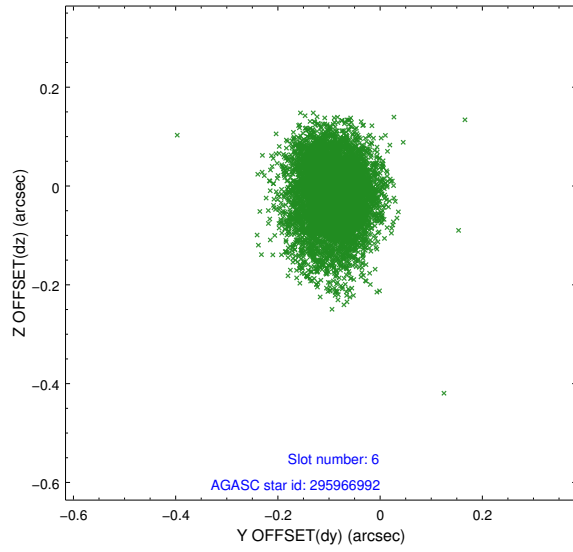
2.4.2 Slot 4



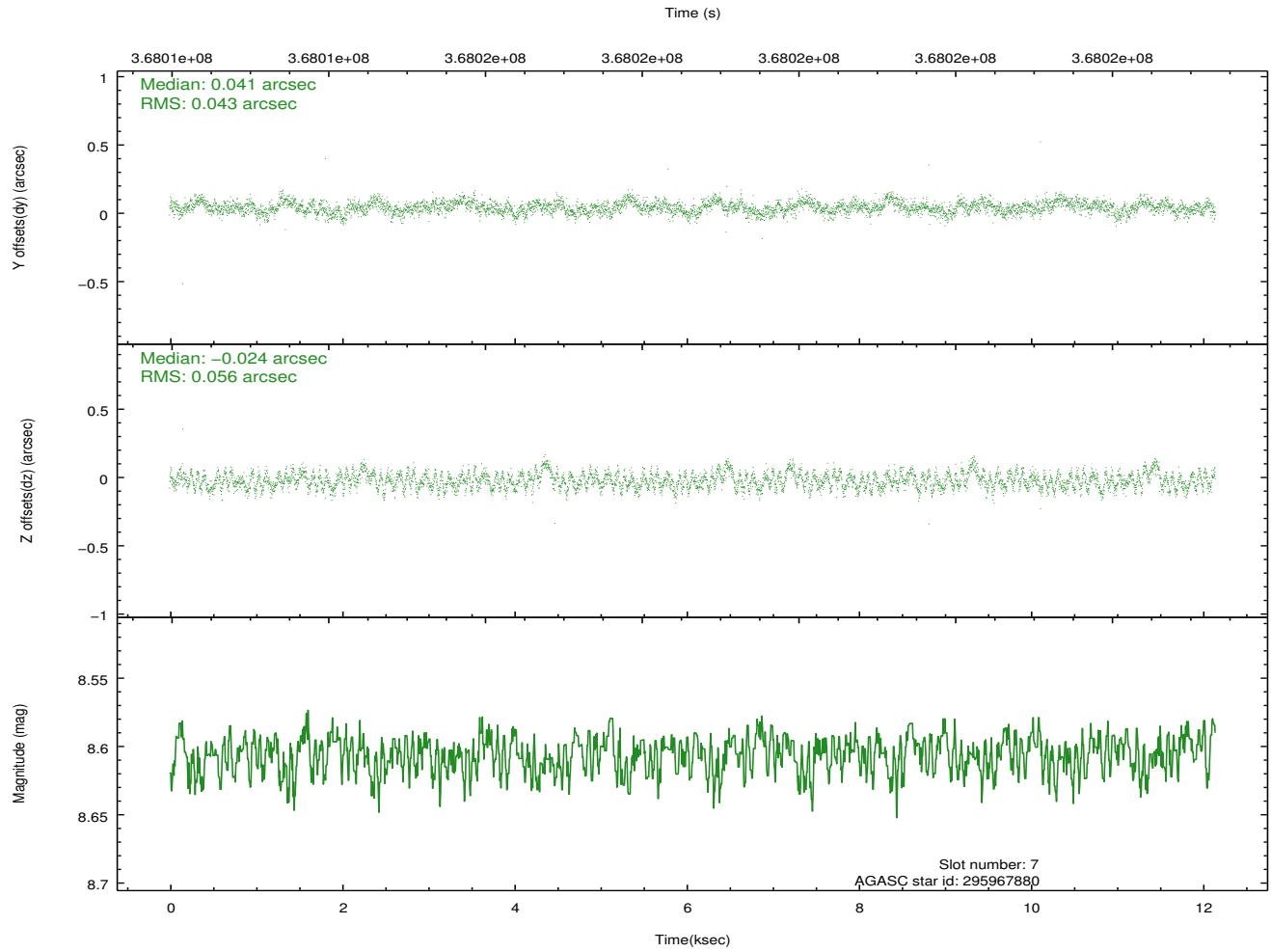
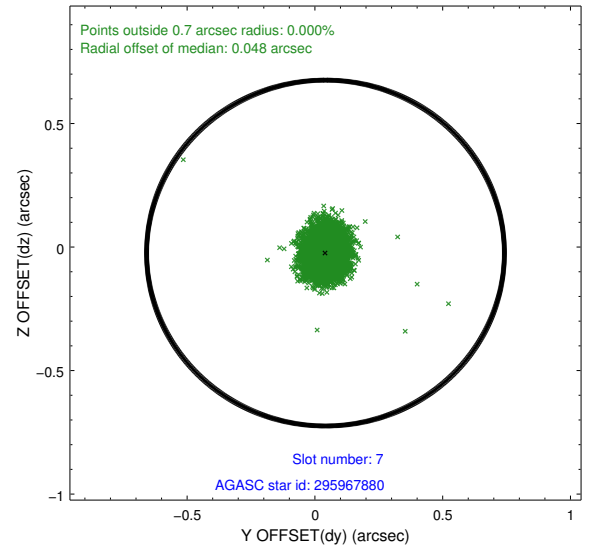
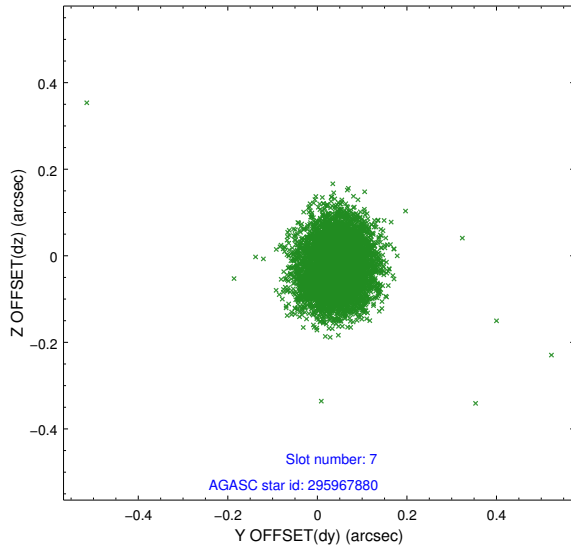
2.4.3 Slot 5



2.4.4 Slot 6

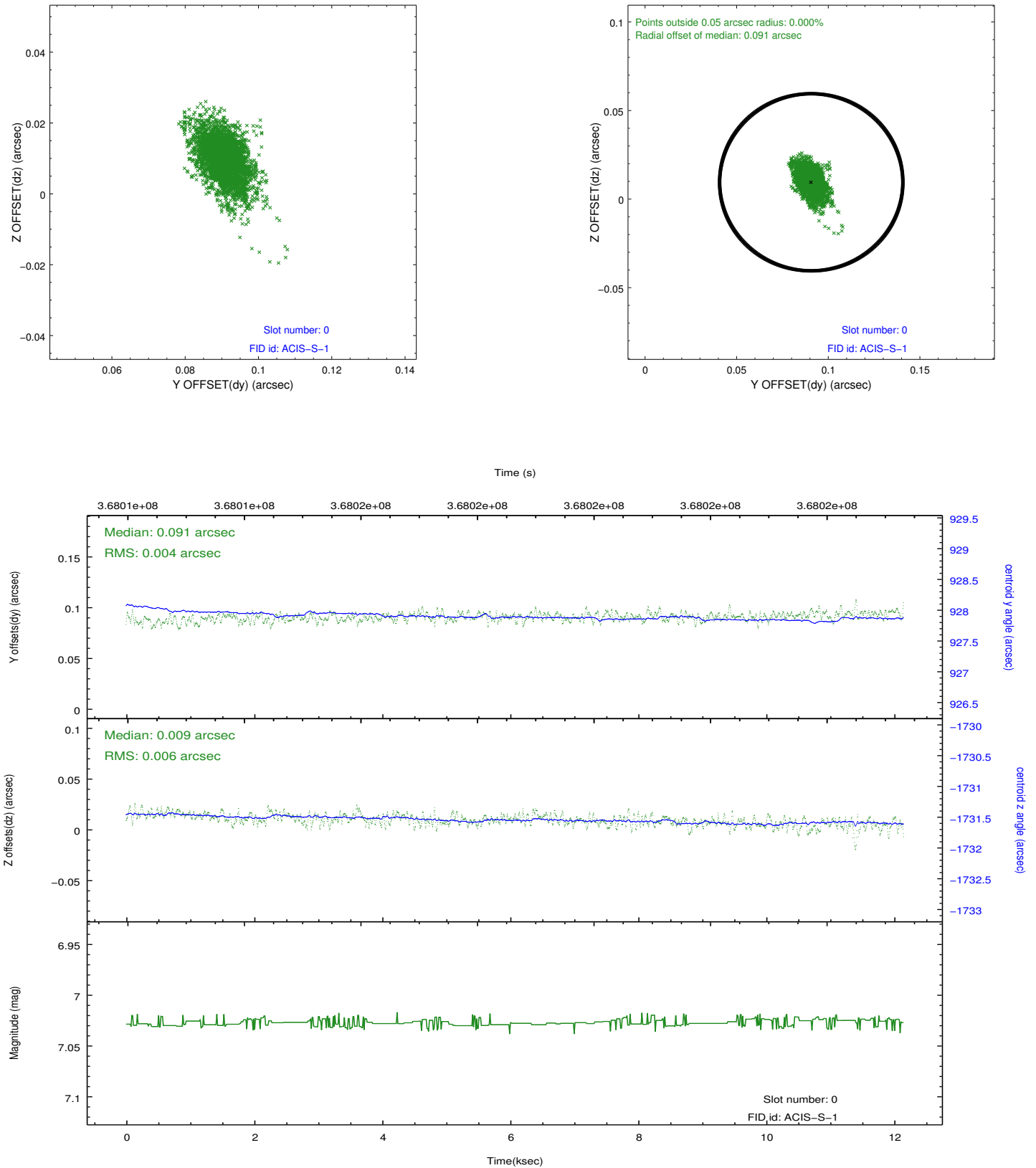


2.4.5 Slot 7

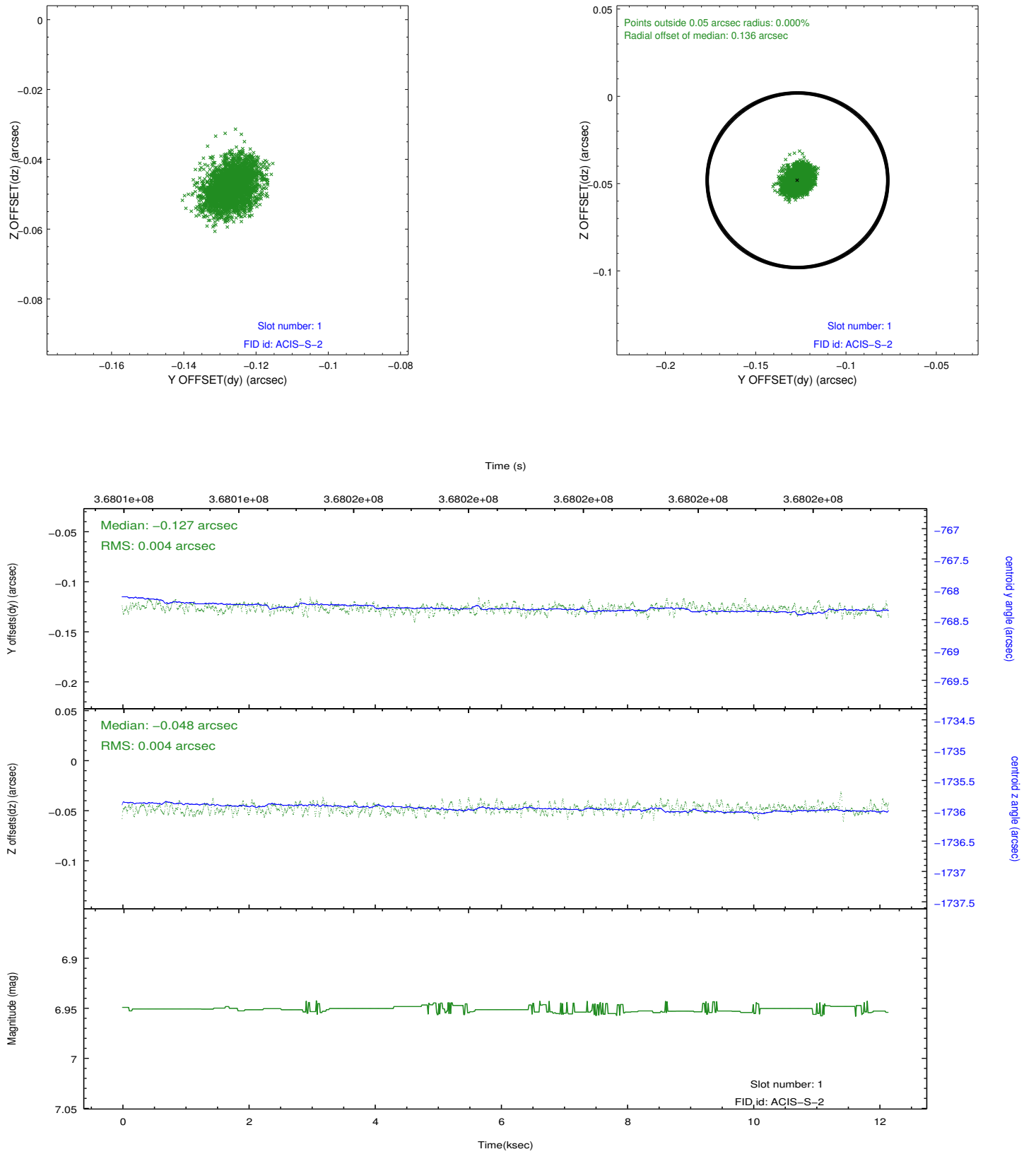


2.5 FID Slots

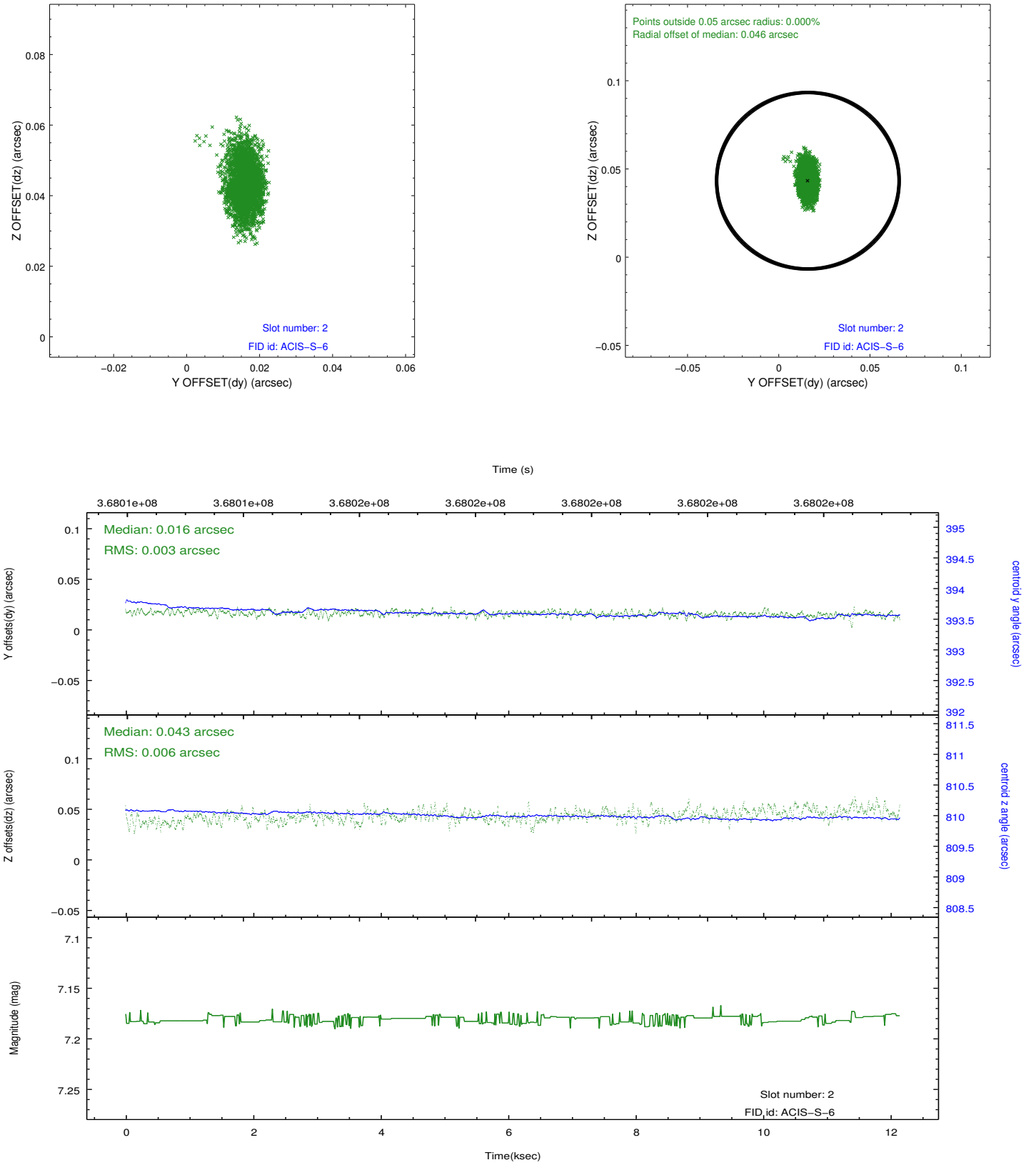
2.5.1 Slot 0



2.5.2 Slot 1



2.5.3 Slot 2



A Summary

A.1 Status

V&V Scientist	Jen Lauer
V&V Date (YYYY-MM-DD)	2012.06.15
V&V Edition	1
V&V Disposition and Status	OK
V&V Charge Time	12.145800093412

A.2 Comments