

# V&V Reference Report

## L2 ASCDS Version : 8.4.4

Observation 10550 - L2 Version 2  
Chandra X-Ray Center

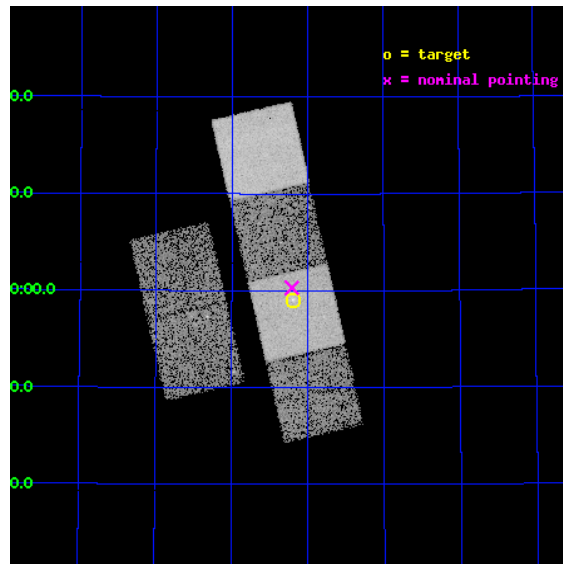
L2 Processing Date : Jun 1 2012

## Contents

<b>1</b>	<b>Front</b>	<b>2</b>
<b>2</b>	<b>OBI</b>	<b>3</b>
2.1	OBI . . . . .	3
2.1.1	Images . . . . .	3
2.1.2	Bias . . . . .	3
2.1.3	Parameters . . . . .	4
2.1.4	Events . . . . .	4
2.2	Compared Parameters . . . . .	5
2.3	Aspect . . . . .	6
2.4	Star Slots . . . . .	9
2.4.1	Slot 3 . . . . .	9
2.4.2	Slot 4 . . . . .	10
2.4.3	Slot 5 . . . . .	11
2.4.4	Slot 6 . . . . .	12
2.4.5	Slot 7 . . . . .	13
2.5	FID Slots . . . . .	14
2.5.1	Slot 0 . . . . .	14
2.5.2	Slot 1 . . . . .	15
2.5.3	Slot 2 . . . . .	16
<b>A</b>	<b>Summary</b>	<b>17</b>
A.1	Status . . . . .	17
A.2	Comments . . . . .	17

# 1 Front

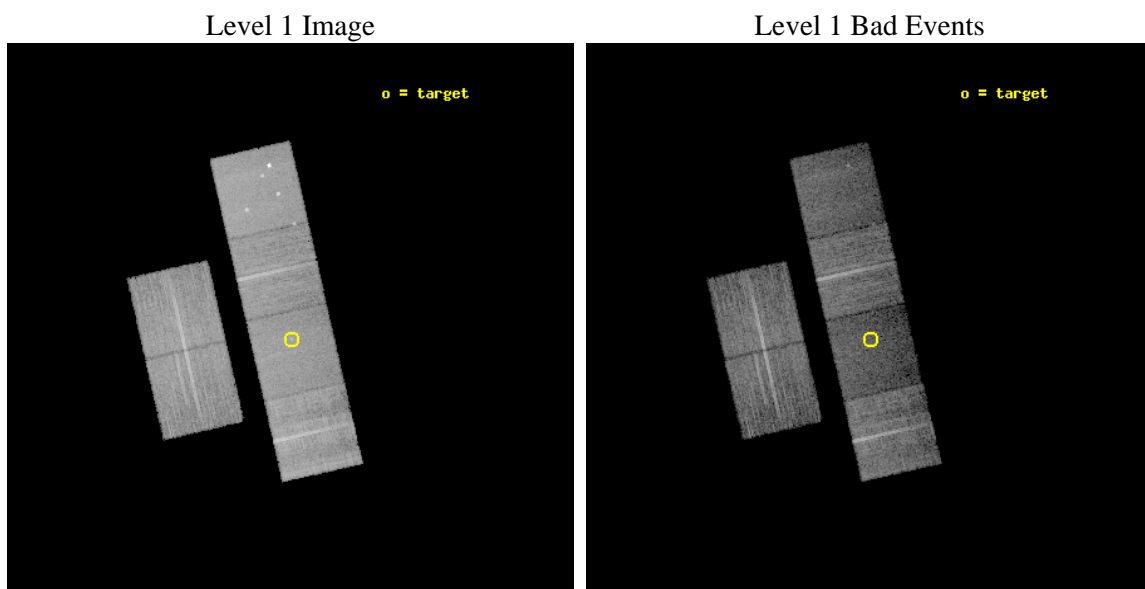
seq_num	600743	Sequence number
obs_id	10550	Observation id
title	A Chandra Study of Field Early-Type Galaxies	Proposal title
observer	Dr. John Mulchaey	Principal investigator
object	NGC 6127	Source name
dtcycle	0	&#160
cycle	P	events from which exps? Prim/Second/Both
ra_targ	244.797917	Observer's specified target RA [deg]
dec_targ	57.984222	Observer's specified target Dec [deg]
ra_nom	244.80201970196	Nominal RA [deg]
dec_nom	58.005063765442	Nominal Dec [deg]
roll_nom	77.153190690504	Nominal Roll [deg]
revision	2	Processing version of data
ontime	10041.002238929	Sum of GTIs [s]
livetime	9913.8570226143	Livetime [s]
ontime2	10041.043278933	Sum of GTIs [s]
ontime3	10037.638118625	Sum of GTIs [s]
ontime5	10040.961198926	Sum of GTIs [s]
ontime6	10037.679158628	Sum of GTIs [s]
ontime7	10041.002238929	Sum of GTIs [s]
ontime8	10040.838078916	Sum of GTIs [s]
l2events	115795	Number of level 2 events



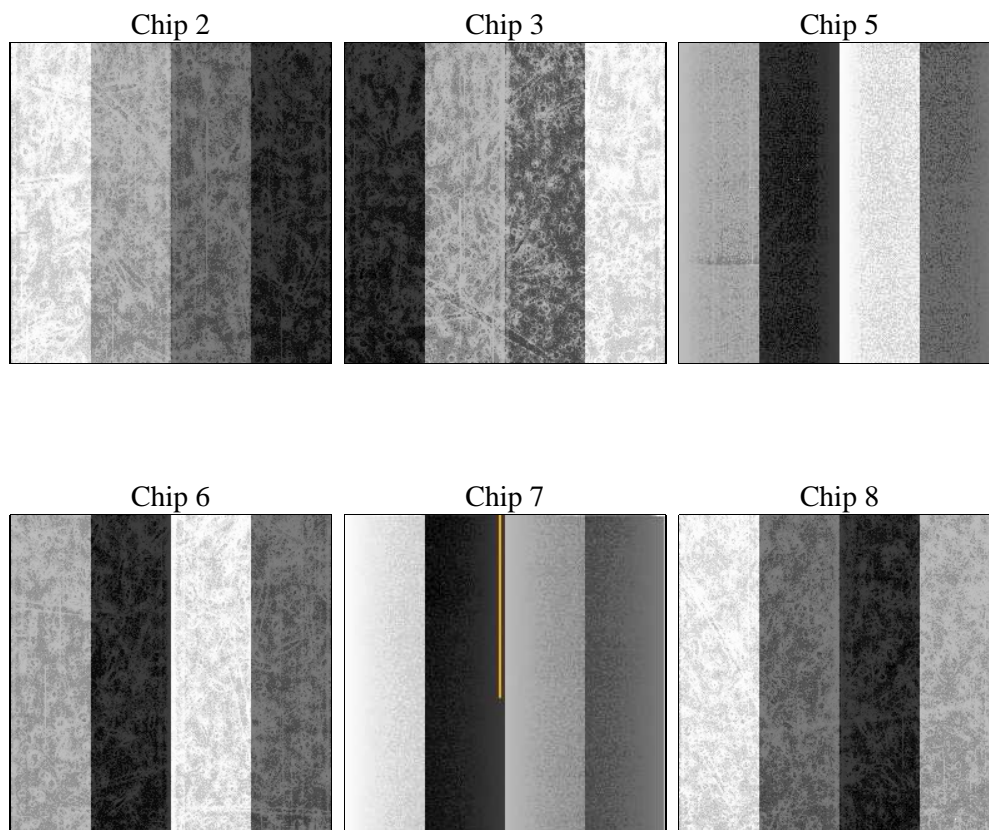
## 2 OBI

### 2.1 OBI

#### 2.1.1 Images



#### 2.1.2 Bias



### 2.1.3 Parameters

obi_num	0	Obi number	sched_exp_time	10000.000000	[s] Scheduled observation exposure time
ascdsver	8.4.4	Processing system revision	ontime	10041.002238929	Sum of GTIs [s]
caldsver	4.4.9	&#160	ontime2	10041.043278933	Sum of GTIs [s]
date	2012-06-01T10:17:26	Date and time of file creation	ontime3	10037.638118625	Sum of GTIs [s]
revision	2	Processing version of data	ontime5	10040.961198926	Sum of GTIs [s]
			ontime6	10037.679158628	Sum of GTIs [s]
			ontime7	10041.002238929	Sum of GTIs [s]
			ontime8	10040.838078916	Sum of GTIs [s]
			l1events	531589	Number of level 1 events

### 2.1.4 Events

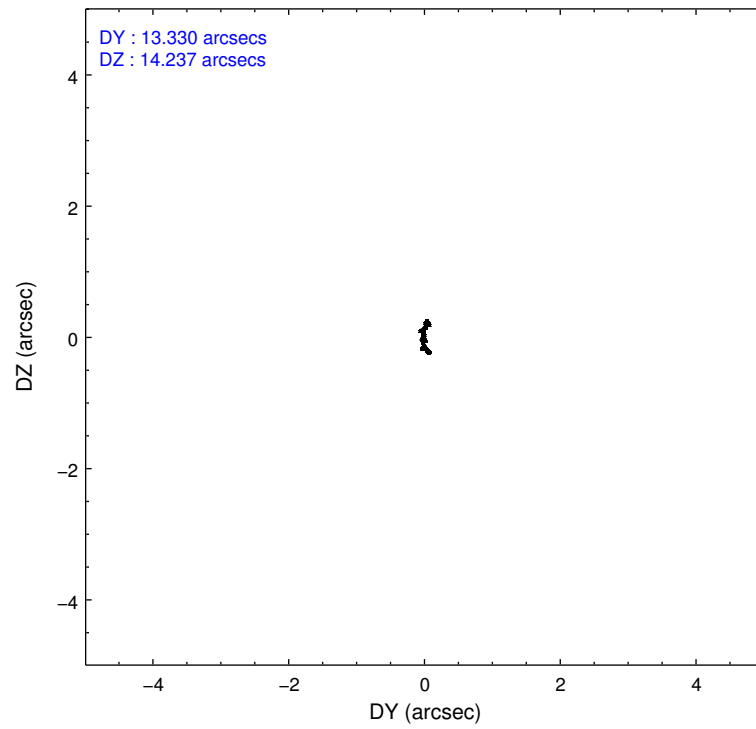
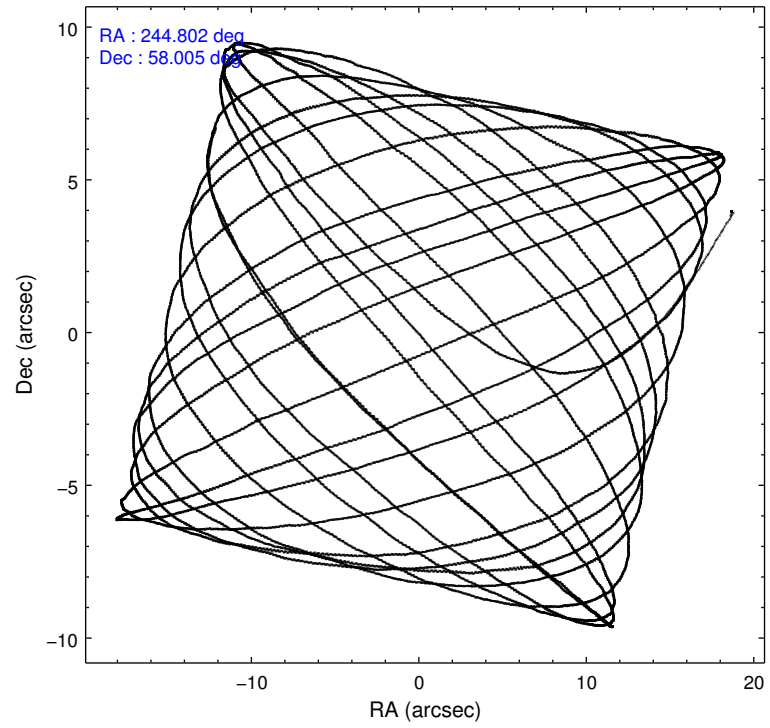
	ccd 2	ccd 3	ccd 5	ccd 6	ccd 7	ccd 8		ccd 2	ccd 3	ccd 5	ccd 6	ccd 7	ccd 8
level 1 events	86024	78199	106566	81688	78127	100985	grade 0 events	2878	2731	7816	3172	4274	6906
rejected events	78236	70680	48392	73126	39517	75618		3%	3%	7%	3%	5%	6%
rejected %	90%	90%	45%	89%	50%	74%	grade 1 events	54	51	411	45	150	108
								0%	0%	0%	0%	0%	0%
							grade 2 events	1932	1687	18211	1864	8280	5924
								2%	2%	17%	2%	10%	5%
							grade 3 events	764	841	2394	853	3596	2908
								0%	1%	2%	1%	4%	2%
							grade 4 events	862	833	2467	904	3422	2726
								1%	1%	2%	1%	4%	2%
							grade 5 events	2461	2750	8400	2847	8359	4351
								2%	3%	7%	3%	10%	4%
							grade 6 events	1359	1432	27324	1770	19056	6908
								1%	1%	25%	2%	24%	6%
							grade 7 events	75714	67874	39543	70233	30990	71154
								88%	86%	37%	85%	39%	70%

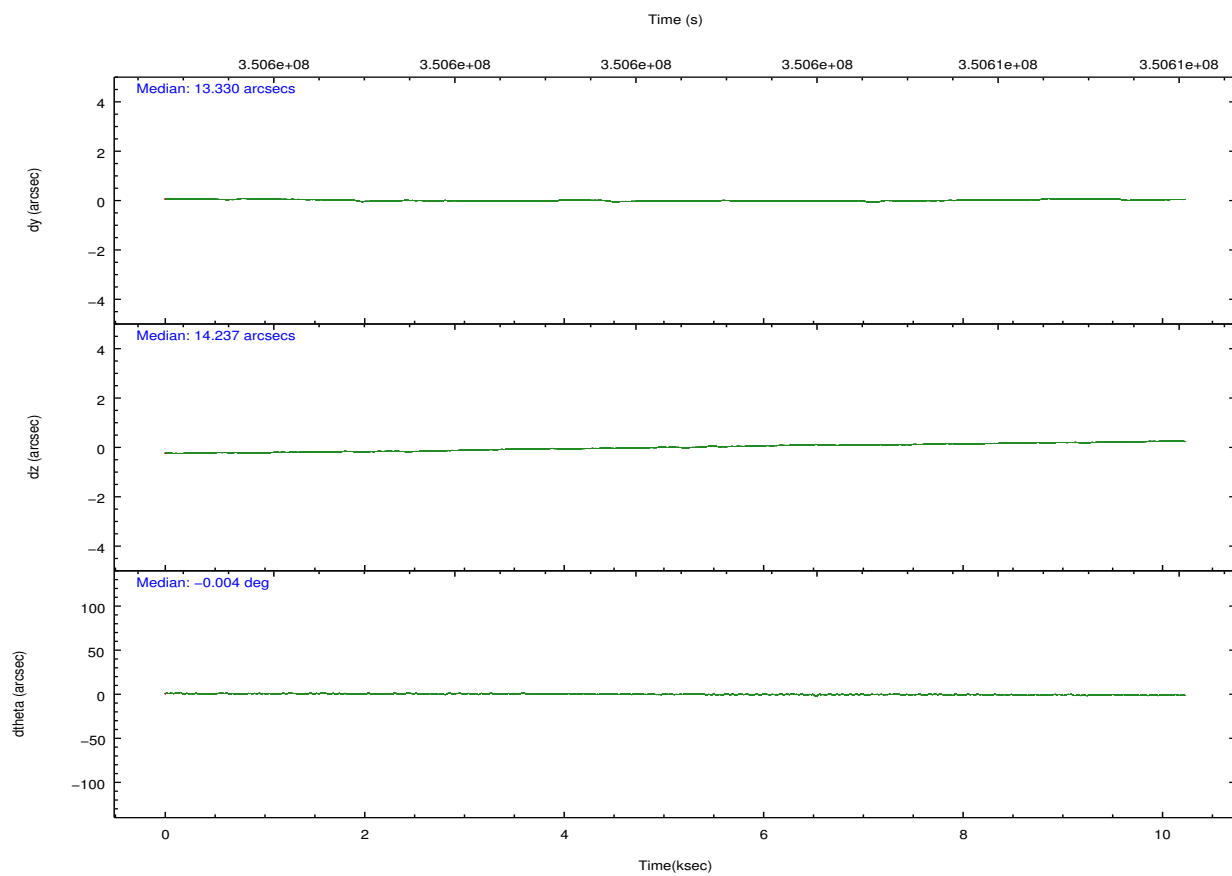
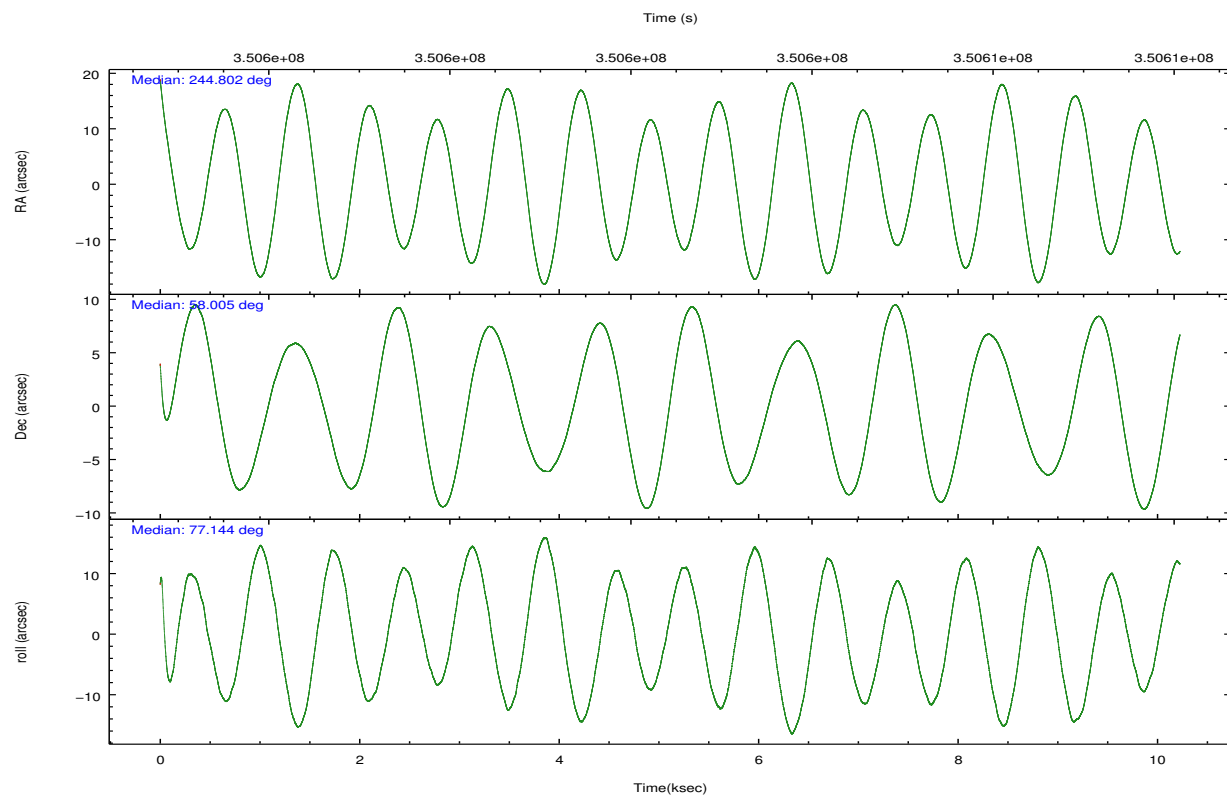


## 2.2 Compared Parameters

Parameter	Planned	Actual	Parameter	Planned	Actual
Instrument	ACIS	ACIS	Obspar format version number	7	7
Detector	ACIS-235678	ACIS-235678	Obspar file type	PREDICTED	ACTUAL
Grating	NONE	NONE	Obspar update status	NONE	UPDATED
Data mode	VFAINT	VFAINT	CCD I0 on	N	N
Observation mode	POINTING	POINTING	CCD I1 on	N	N
[deg] Pointing RA	244.817918	244.8020197019573	CCD I2 on	O3	Y
[deg] Pointing Dec	57.979036	58.00506376544218	CCD I3 on	O4	Y
[deg] Pointing Roll	76.983043	77.15319069050391	CCD S0 on	N	N
[mm] SIM focus pos	-0.684267	-0.6828225247311905	CCD S1 on	O1	Y
[mm] SIM defocus	0	0.001444936568705701	CCD S2 on	O2	Y
[mm] SIM translation stage pos	-190.132523	-190.1400660498719	CCD S3 on	Y	Y
[mm] SIM translation stage offset	0	0.00754346686406393	CCD S4 on	O5	Y
[s] Observation start time (MET)	350597536.184000	350596511.03057	CCD S5 on	N	N
Observation start date	2009-02-09T20:11:10	2009-02-09T19:55:11	Number of optional ACIS chips dropped	0	0
[s] Observation end time (MET)	350607536.184000	350608525.05617	On-chip summing requested	N	N
Observation end date	2009-02-09T22:57:50	2009-02-09T23:15:25	Subarray requested	NONE	NONE
Read mode	TIMED	TIMED	Alternating exposures requested	N	N
			[s] Primary exposure time	0.000000	3.2

## 2.3 Aspect



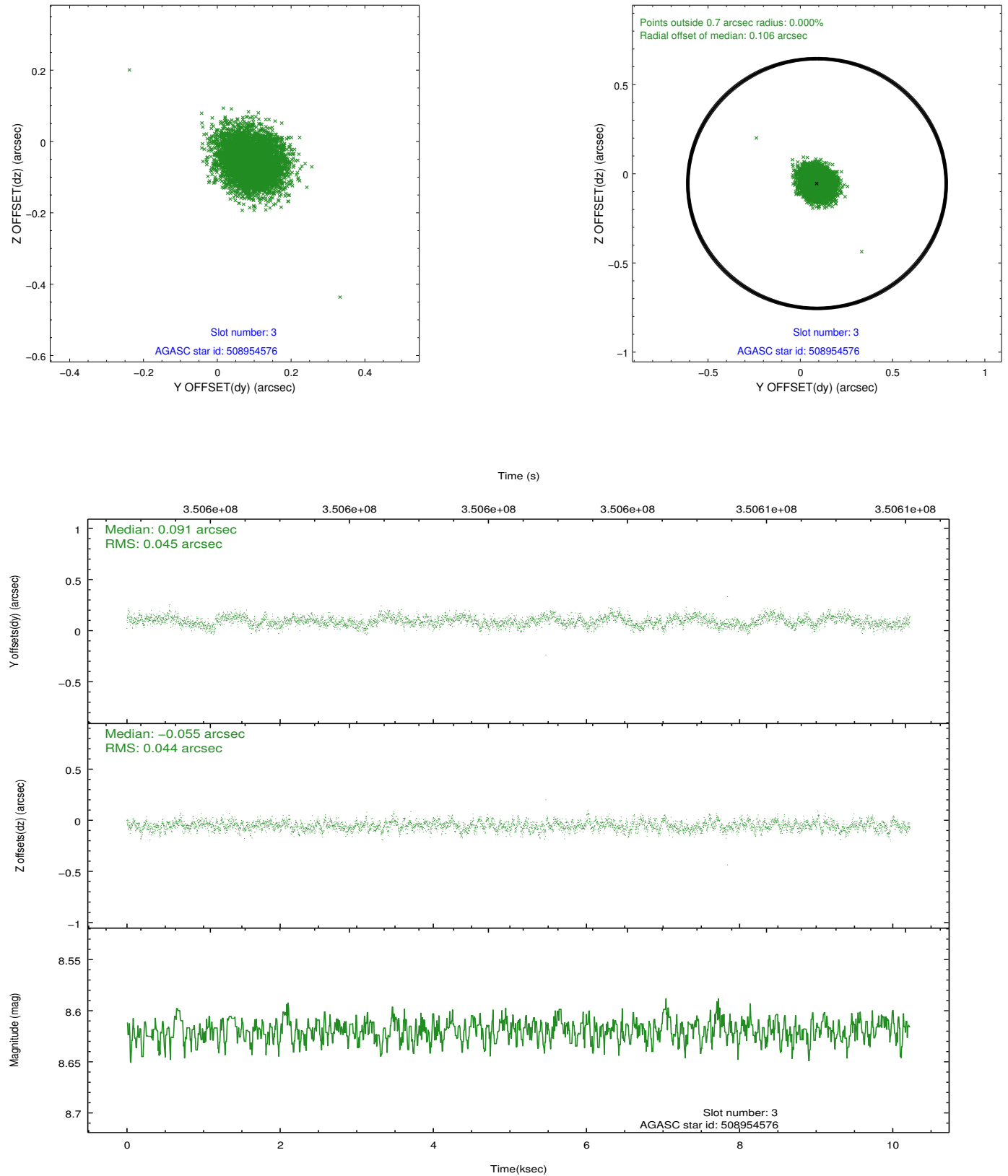


### Slot Statistics

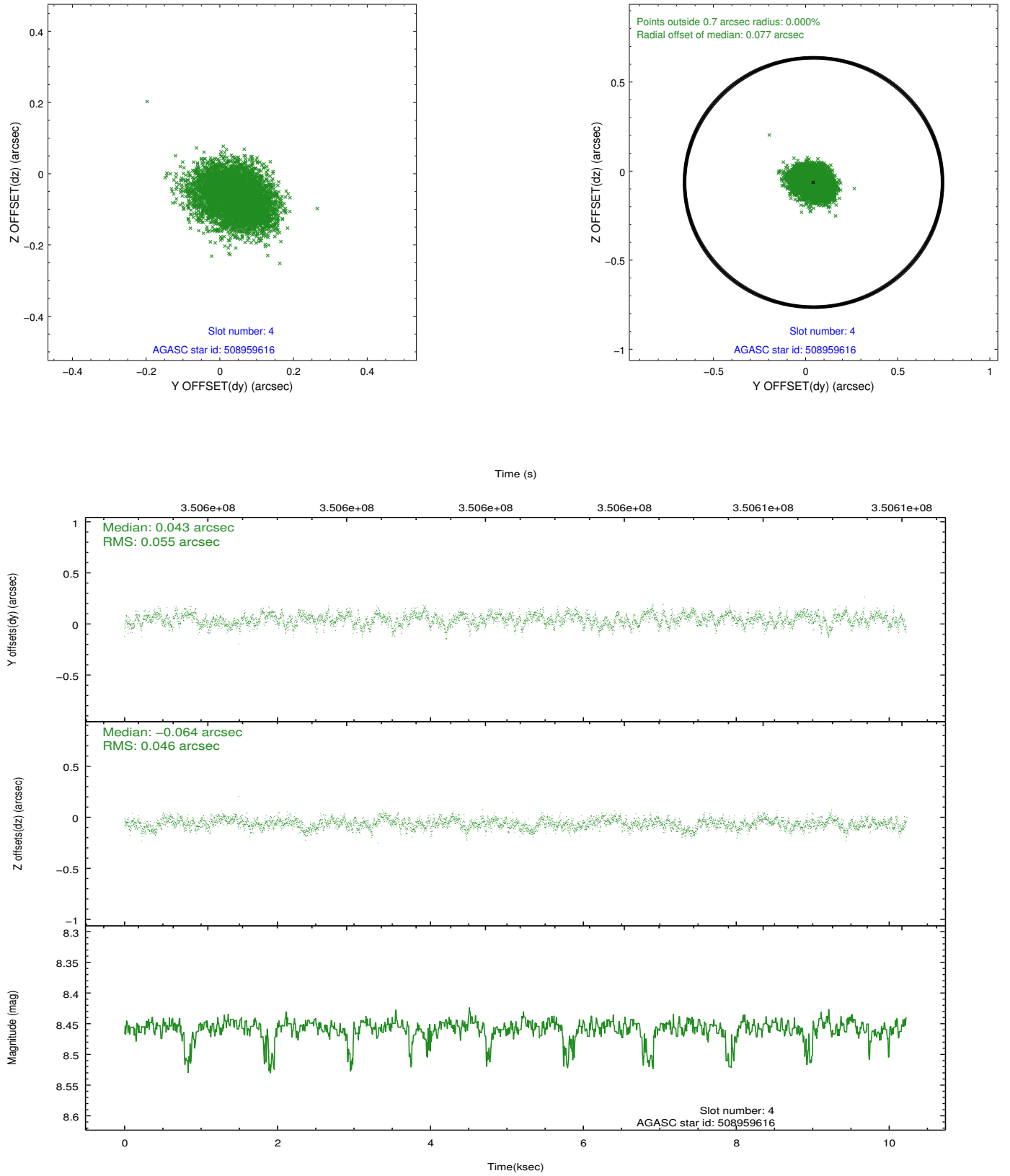
slot	status	id	mag	n_pts	med_dy	med_dz	dr1	dr2	ra	dec	mean_y	mean_z
0	FID	ACIS-S-2	6.93	2495	-0.040	-0.028	0.008	0.013	0.000000	0.000000	-766.29	-1735.63
1	FID	ACIS-S-4	7.02	2495	0.156	0.027	0.007	0.013	0.000000	0.000000	2146.93	172.40
2	FID	ACIS-S-5	7.05	2495	-0.147	0.010	0.008	0.013	0.000000	0.000000	-1818.59	166.60
3	GUIDE	508954576	8.62	4987	0.091	-0.055	0.067	0.107	243.745533	57.874132	-814.53	1918.73
4	GUIDE	508959616	8.46	4988	0.043	-0.064	0.077	0.122	243.561900	57.513428	-2158.38	1994.01
5	GUIDE	508961464	8.17	4988	-0.107	-0.121	0.070	0.107	243.977336	58.478996	1406.44	1949.69
6	GUIDE	509085616	9.61	4961	0.033	0.103	0.123	0.207	246.183745	58.258042	1587.66	-2287.17
7	GUIDE	509096712	9.48	4978	-0.060	0.136	0.114	0.186	245.960543	57.710178	-429.04	-2354.99

## 2.4 Star Slots

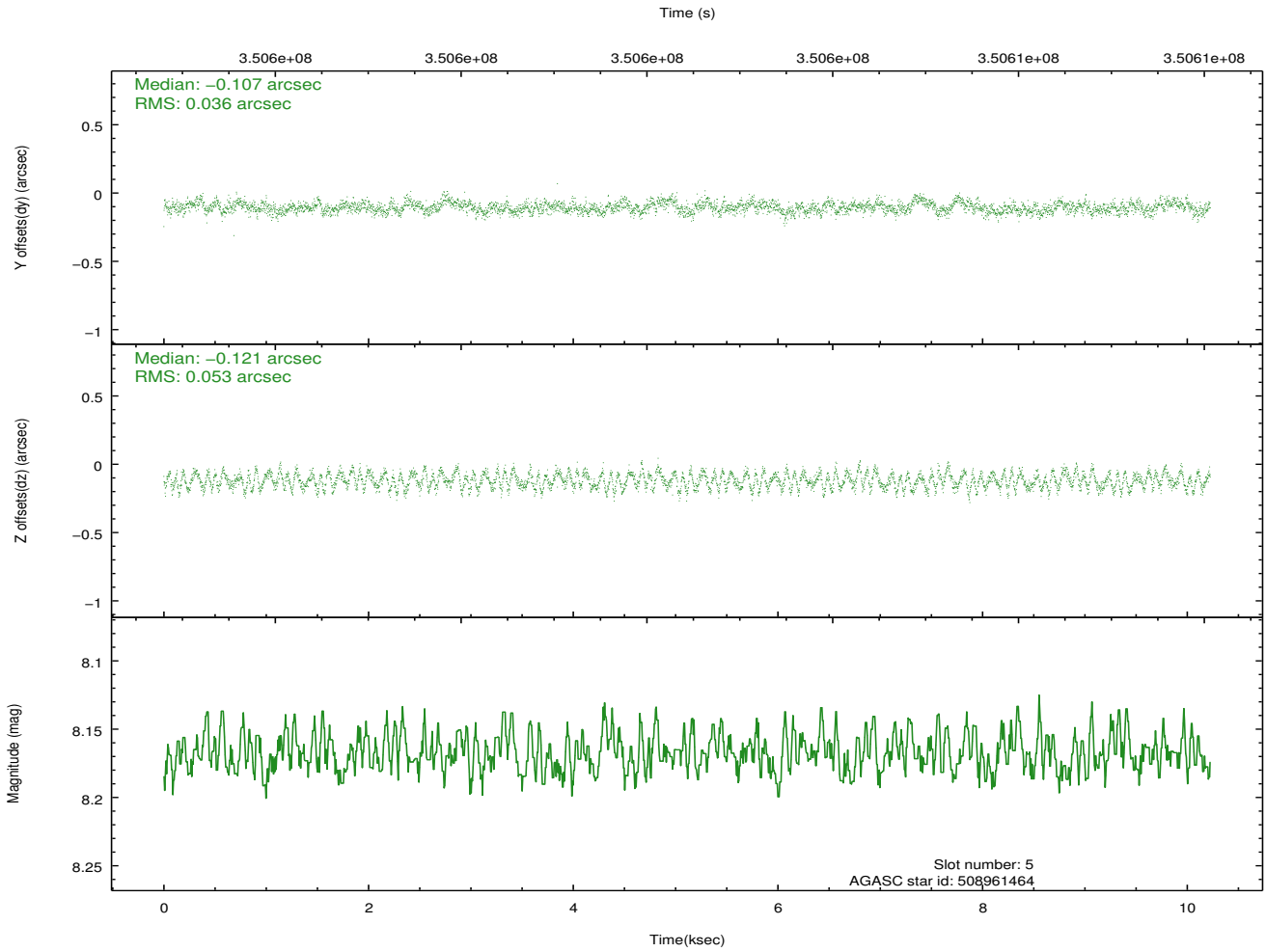
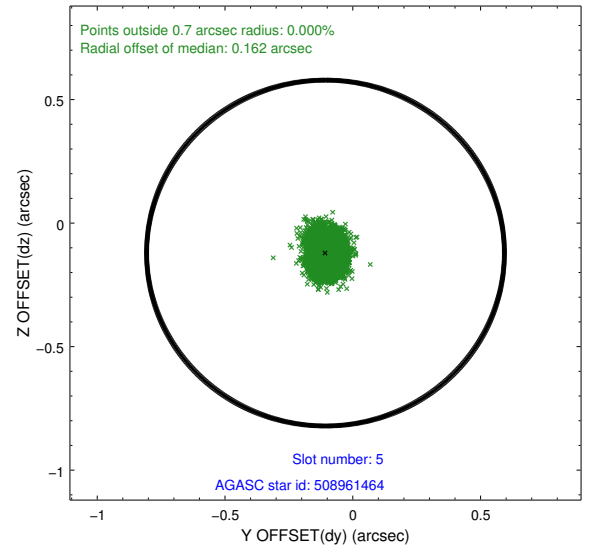
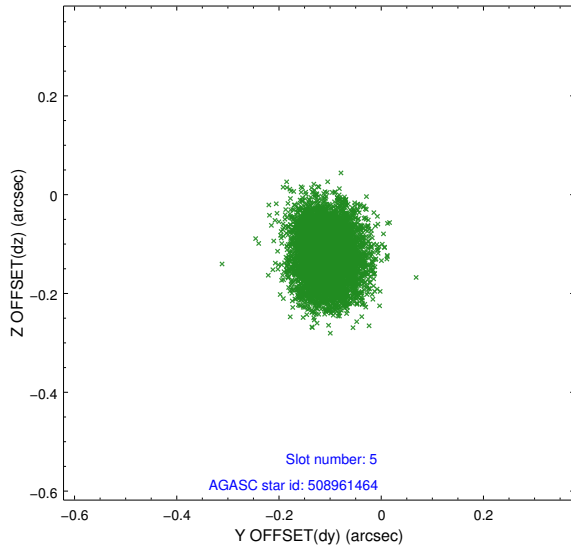
### 2.4.1 Slot 3



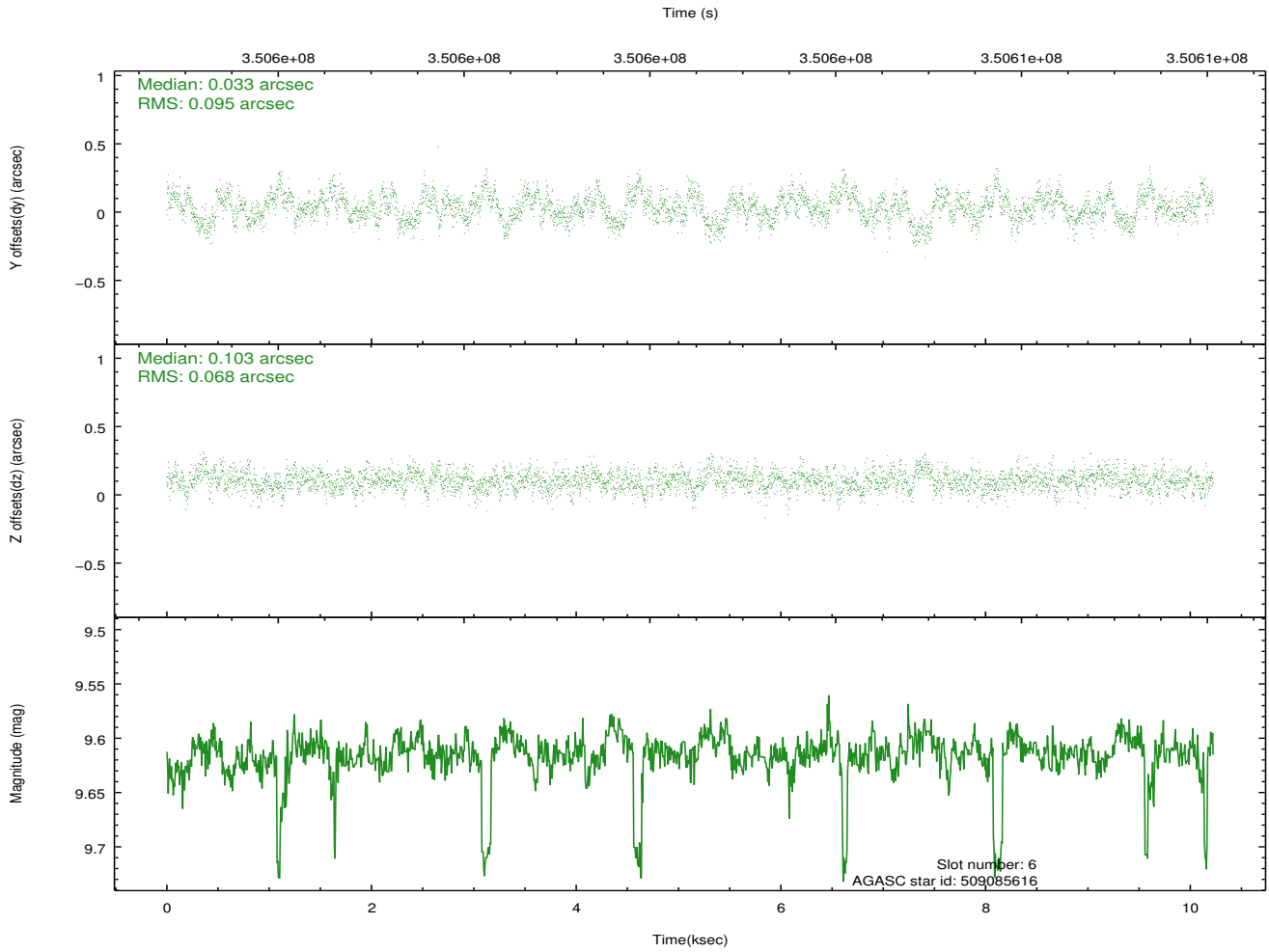
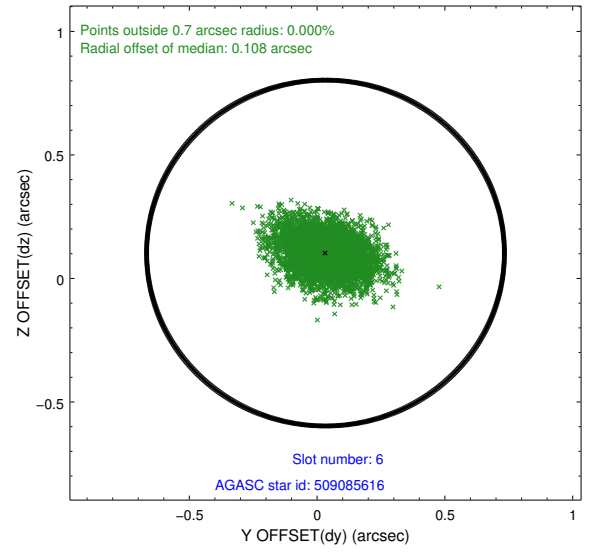
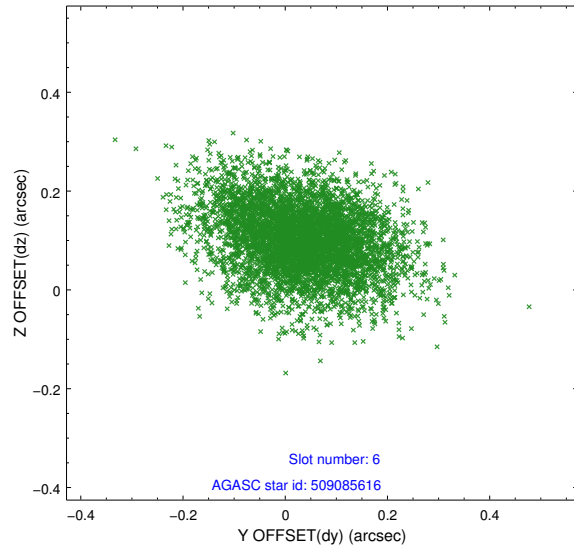
## 2.4.2 Slot 4



### 2.4.3 Slot 5

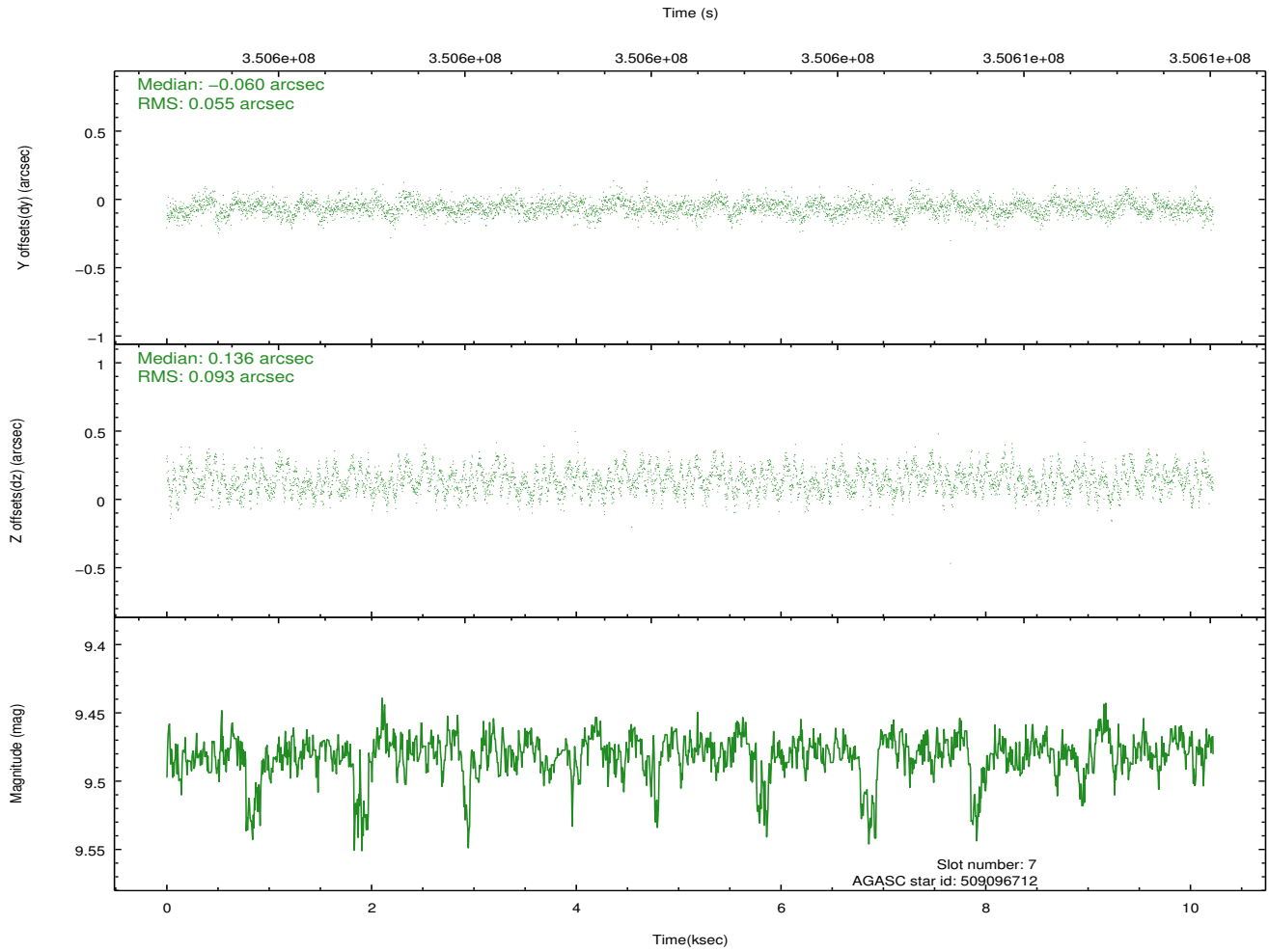
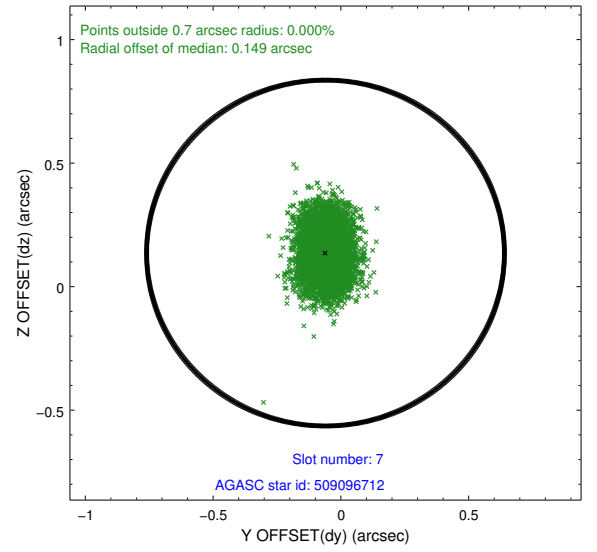
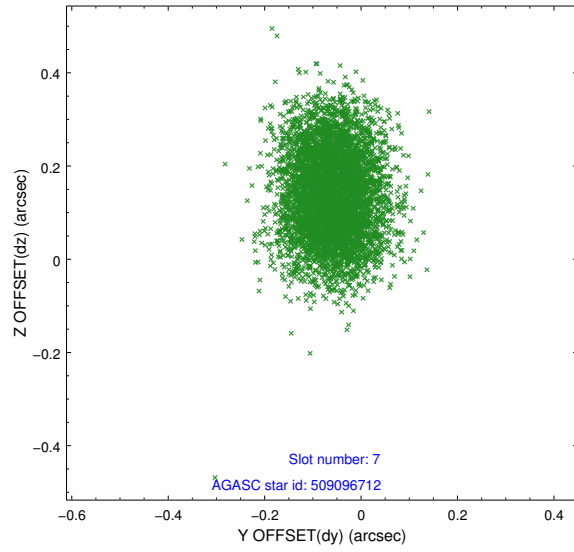


## 2.4.4 Slot 6



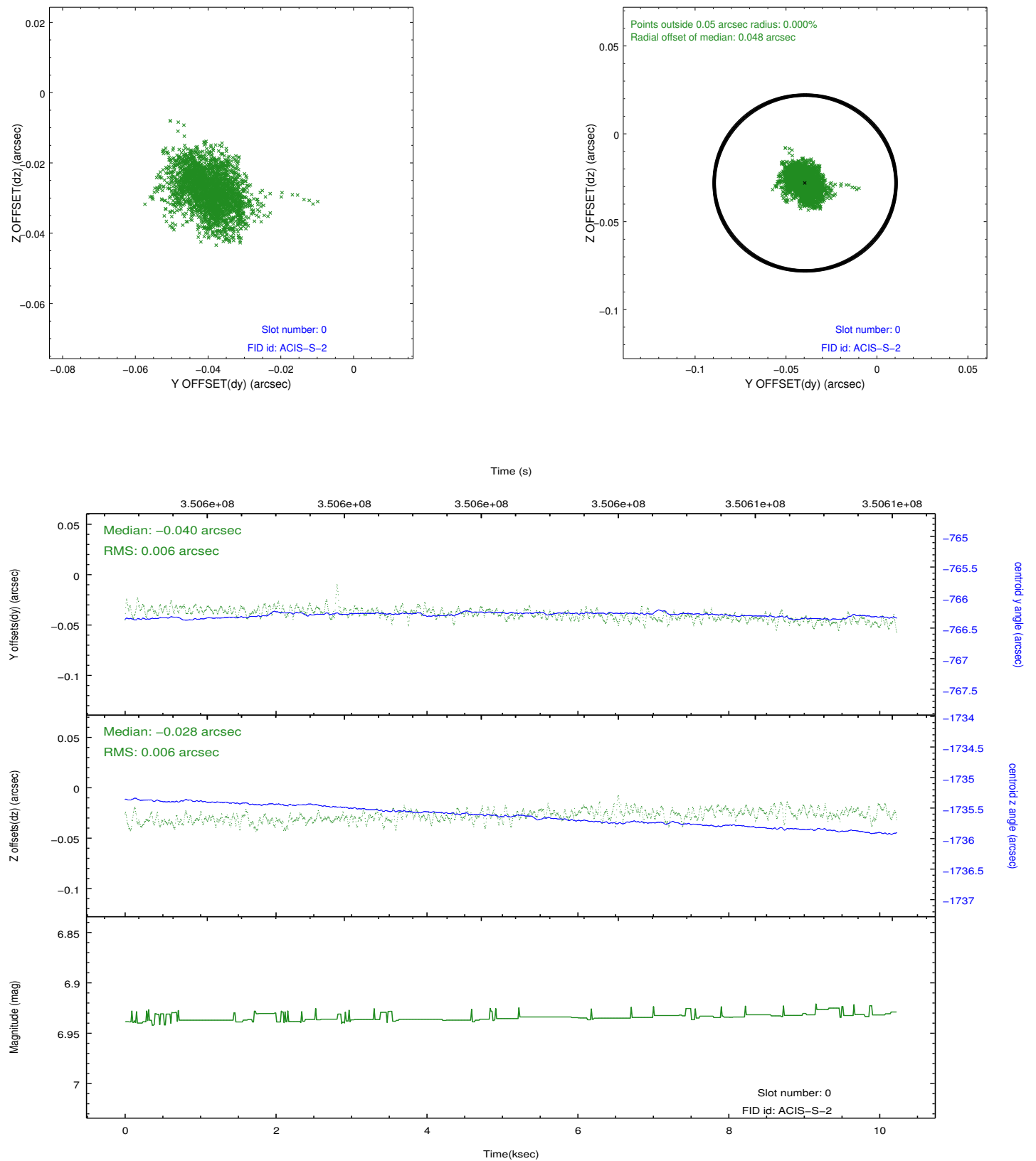


## 2.4.5 Slot 7

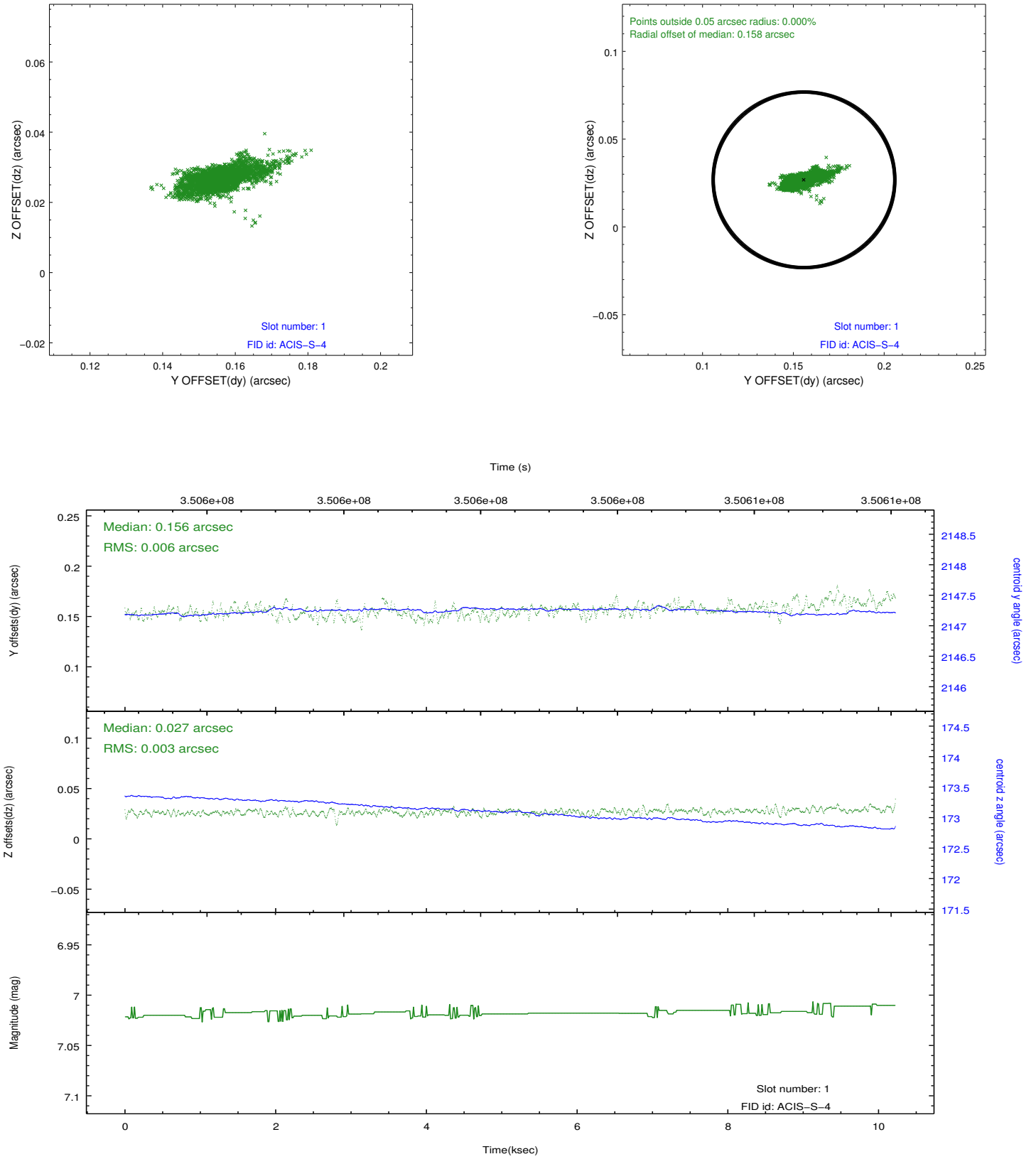


## 2.5 FID Slots

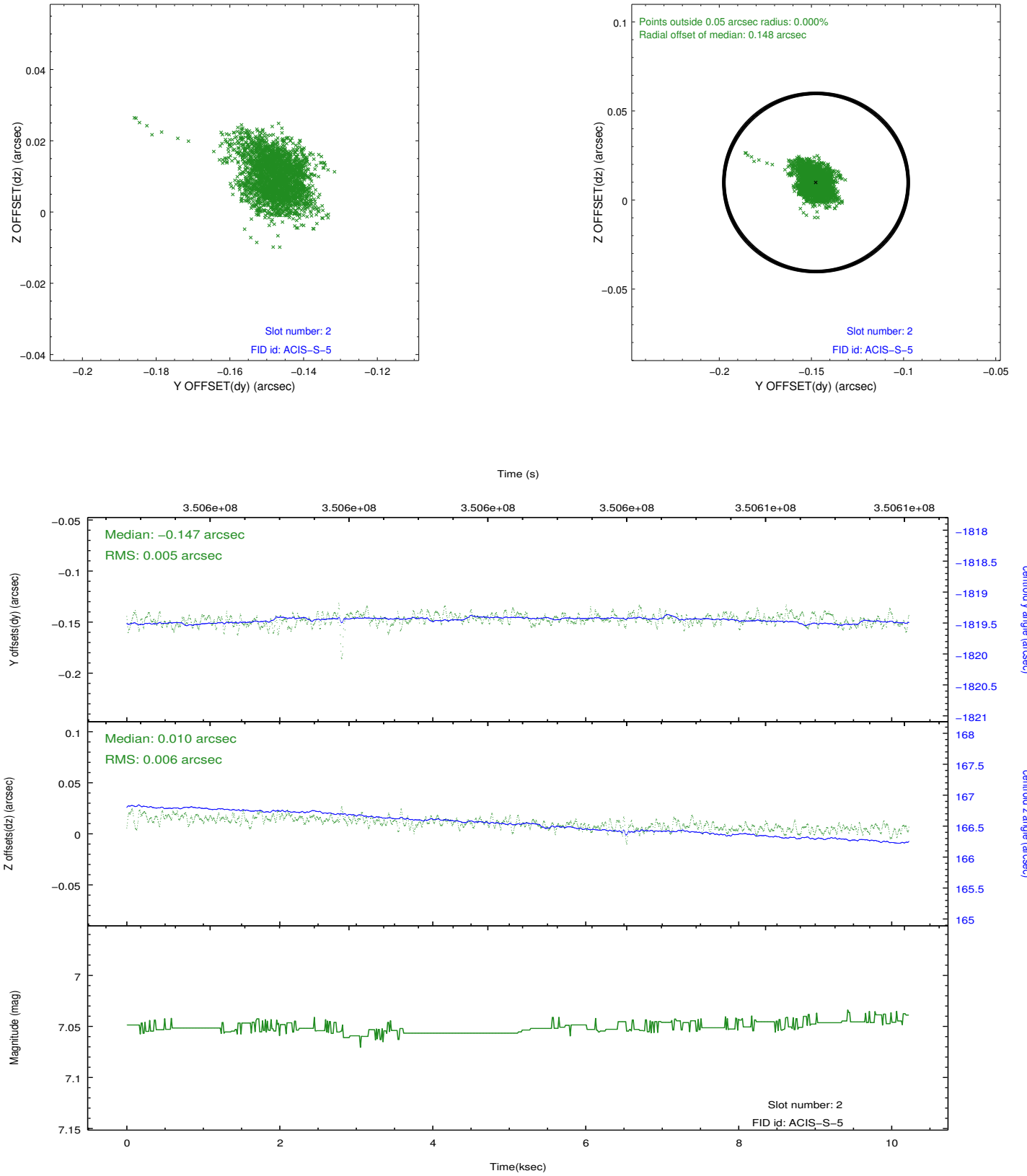
### 2.5.1 Slot 0



## 2.5.2 Slot 1



### 2.5.3 Slot 2



## A Summary

### A.1 Status

V&V Scientist	Jen Lauer
V&V Date (YYYY-MM-DD)	2012.06.06
V&V Edition	1
V&V Disposition and Status	OK
V&V Charge Time	10.0415999

### A.2 Comments