

# V&V Reference Report

## L2 ASCDS Version : 8.4.4

Observation 10187 - L2 Version 2  
Chandra X-Ray Center

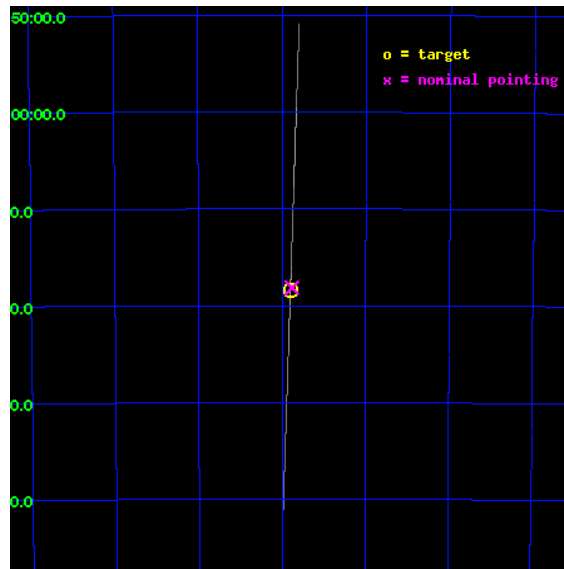
L2 Processing Date : May 30 2012

## Contents

<b>1</b>	<b>Front</b>	<b>2</b>
<b>2</b>	<b>OBI</b>	<b>3</b>
2.1	OBI . . . . .	3
2.1.1	Images . . . . .	3
2.1.2	Bias . . . . .	3
2.1.3	Parameters . . . . .	4
2.1.4	Events . . . . .	4
2.2	Compared Parameters . . . . .	5
2.3	Aspect . . . . .	6
2.4	Star Slots . . . . .	9
2.4.1	Slot 3 . . . . .	9
2.4.2	Slot 4 . . . . .	10
2.4.3	Slot 5 . . . . .	11
2.4.4	Slot 6 . . . . .	12
2.4.5	Slot 7 . . . . .	13
2.5	FID Slots . . . . .	14
2.5.1	Slot 0 . . . . .	14
2.5.2	Slot 1 . . . . .	15
2.5.3	Slot 2 . . . . .	16
<b>A</b>	<b>Summary</b>	<b>17</b>
A.1	Status . . . . .	17
A.2	Comments . . . . .	17

# 1 Front

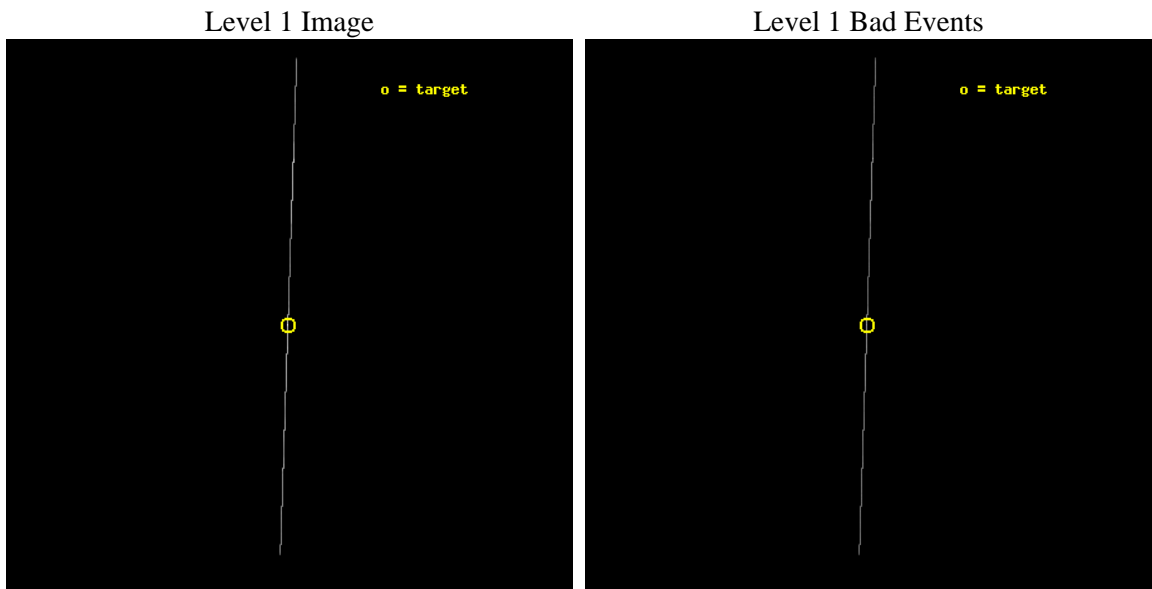
seq_num	501114	Sequence number
obs_id	10187	Observation id
title	Prompt Study of Burst-Selected Outbursts from AXPs	Proposal title
observer	Dr. Gianluca Israel	Principal investigator
object	1E1547.0-5408	Source name
ra_targ	237.725417	Observer's specified target RA [deg]
dec_targ	-54.306611	Observer's specified target Dec [deg]
ra_nom	237.72079044471	Nominal RA [deg]
dec_nom	-54.302564884752	Nominal Dec [deg]
roll_nom	91.868055580223	Nominal Roll [deg]
revision	2	Processing version of data
ontime	13164.0	Sum of GTIs [s]
livetime	13112.578125	Livetime [s]
ontime4	13164.0	Sum of GTIs [s]
ontime5	13164.0	Sum of GTIs [s]
ontime6	13164.0	Sum of GTIs [s]
ontime7	13164.0	Sum of GTIs [s]
ontime8	13164.0	Sum of GTIs [s]
ontime9	13164.0	Sum of GTIs [s]
l2events	302527	Number of level 2 events



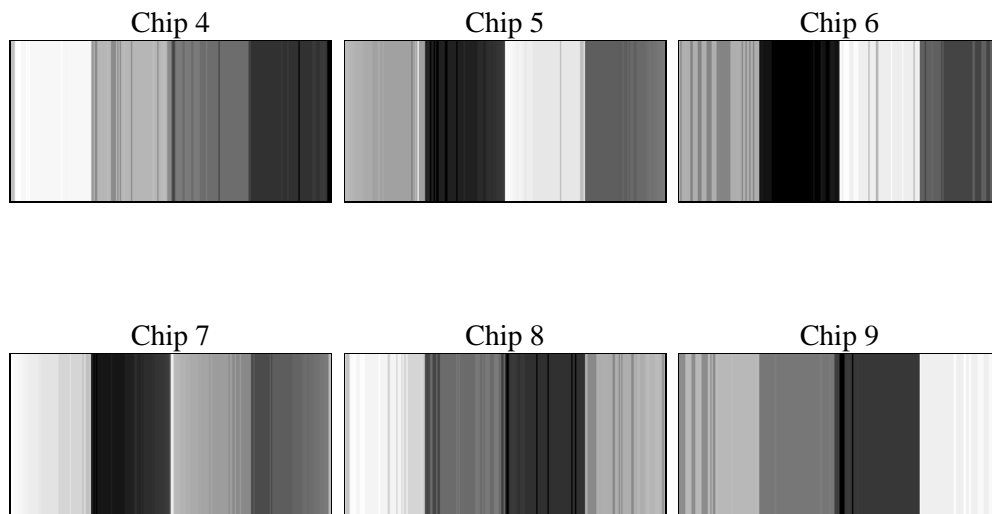
## 2 OBI

### 2.1 OBI

#### 2.1.1 Images



#### 2.1.2 Bias



### 2.1.3 Parameters

obi_num	0	Obi number	sched_exp_time	13000.000000	[s] Scheduled observation exposure time
ascdsver	8.4.4	Processing system revision	ontime	13164.0	Sum of GTIs [s]
caldsver	4.4.9	&#160	ontime4	13164.0	Sum of GTIs [s]
date	2012-05-30T06:29:30	Date and time of file creation	ontime5	13164.0	Sum of GTIs [s]
revision	2	Processing version of data	ontime6	13164.0	Sum of GTIs [s]
			ontime7	13164.0	Sum of GTIs [s]
			ontime8	13164.0	Sum of GTIs [s]
			ontime9	13164.0	Sum of GTIs [s]
			l1events	461090	Number of level 1 events

### 2.1.4 Events

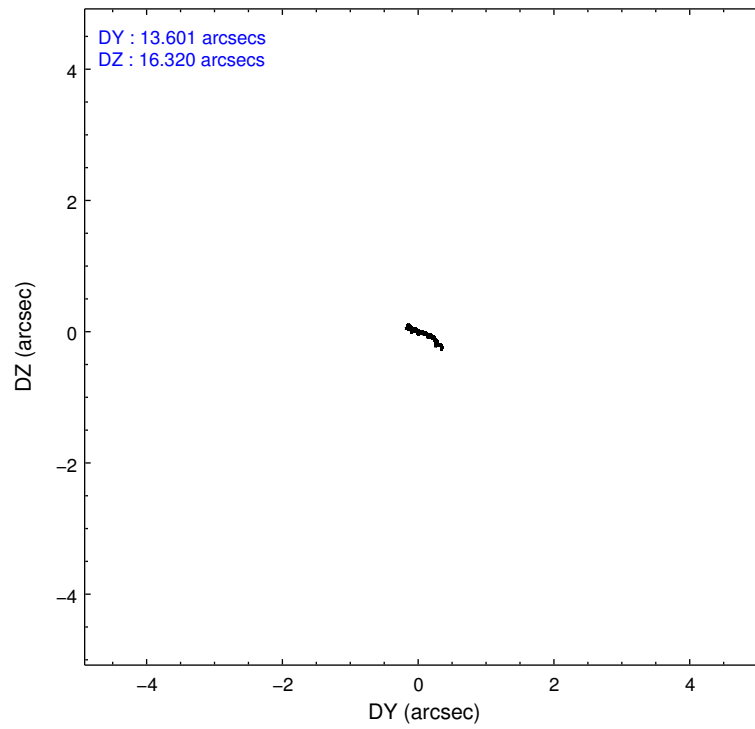
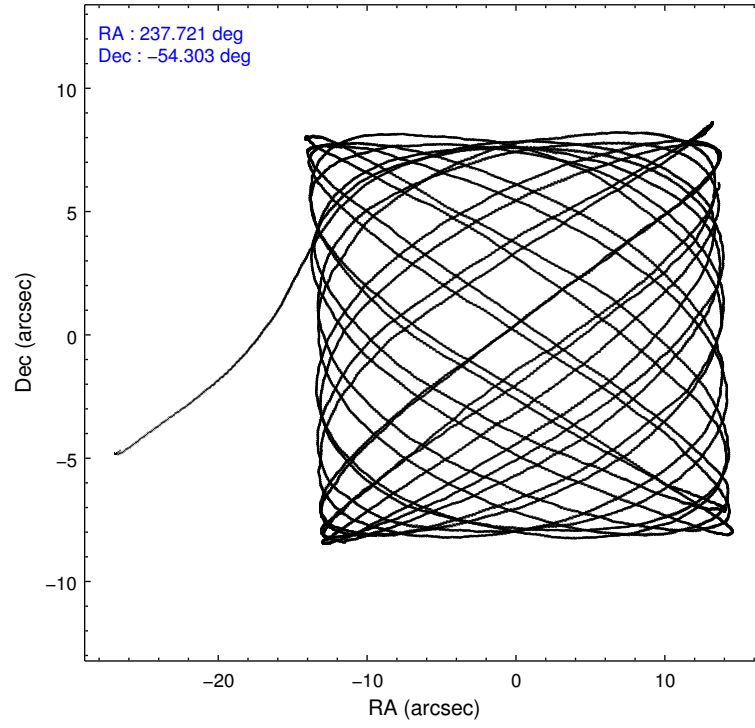
	ccd 4	ccd 5	ccd 6	ccd 7	ccd 8	ccd 9		ccd 4	ccd 5	ccd 6	ccd 7	ccd 8	ccd 9
level 1 events	32266	148601	33346	146878	67326	32673	grade 0 events	3768	31699	3285	16264	11836	3504
rejected events	7344	20272	7869	20601	12253	8157		11%	21%	9%	11%	17%	10%
rejected %	22%	13%	23%	14%	18%	24%	grade 1 events	171	227	114	300	240	113
								0%	0%	0%	0%	0%	0%
							grade 2 events	10156	39294	11222	34616	18331	9852
								31%	26%	33%	23%	27%	30%
							grade 3 events	3338	2581	2971	10530	6182	2827
								10%	1%	8%	7%	9%	8%
							grade 4 events	3483	2428	3000	10274	5929	2957
								10%	1%	8%	6%	8%	9%
							grade 5 events	5800	13125	6363	15667	8956	6736
								17%	8%	19%	10%	13%	20%
							grade 6 events	5550	59247	6391	59227	15852	6684
								17%	39%	19%	40%	23%	20%
							grade 7 events	0	0	0	0	0	0
								0%	0%	0%	0%	0%	0%

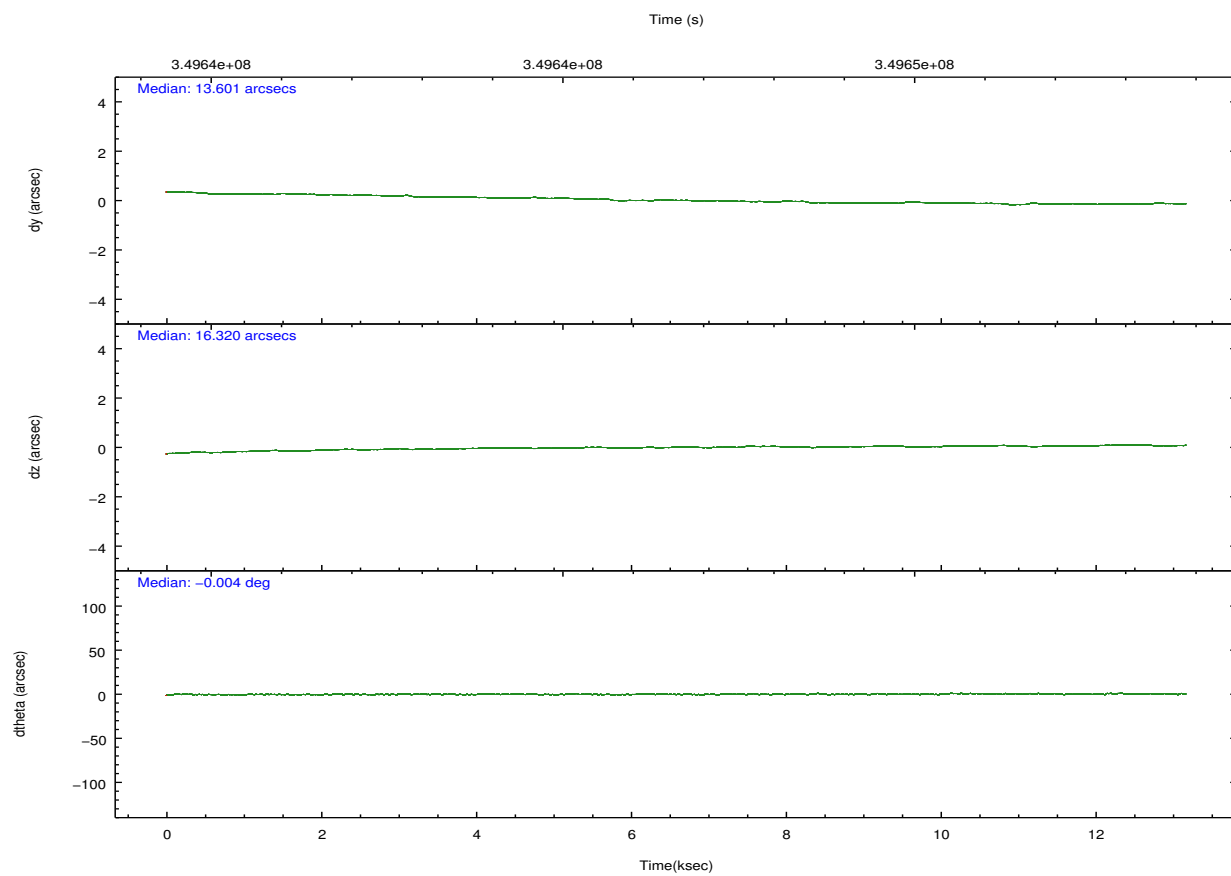
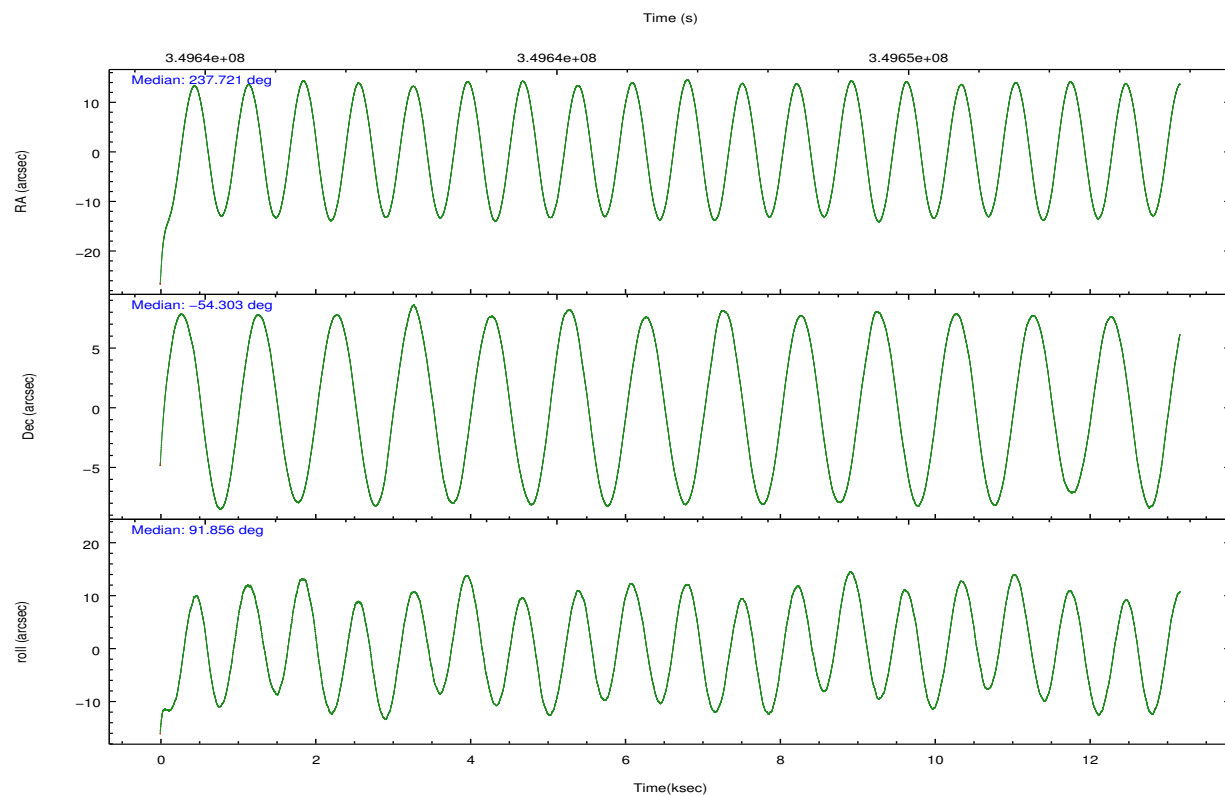


## 2.2 Compared Parameters

Parameter	Planned	Actual	Parameter	Planned	Actual
Instrument	ACIS	ACIS	Obspar format version number	7	7
Detector	ACIS-456789	ACIS-456789	Obspar file type	PREDICTED	ACTUAL
Grating	NONE	NONE	Obspar update status	NONE	UPDATED
Data mode	CC33_FAINT	CC33_FAINT	Number of optional ACIS chips dropped	0	0
Observation mode	POINTING	POINTING	On-chip summing requested	N	N
[deg] Pointing RA	237.746121	237.7207904447099	Subarray requested	NONE	NONE
[deg] Pointing Dec	-54.325591	-54.30256488475241	Alternating exposures requested	N	N
[deg] Pointing Roll	91.732002	91.8680555802227	[s] Primary exposure time	0.000000	0
[mm] SIM focus pos	-0.684267	-0.6828225247311905			
[mm] SIM defocus	0	0.001444936568705701			
[mm] SIM translation stage pos	-190.132523	-190.1400660498719			
[mm] SIM translation stage offset	0	0.00754346686406393			
[s] Observation start time (MET)	349640191.184000	349639299.35809			
Observation start date	2009-01-29T18:15:25	2009-01-29T18:01:39			
[s] Observation end time (MET)	349653191.184000	349653799.52131			
Observation end date	2009-01-29T21:52:05	2009-01-29T22:03:19			
Read mode	CONTINUOUS	CONTINUOUS			

## 2.3 Aspect



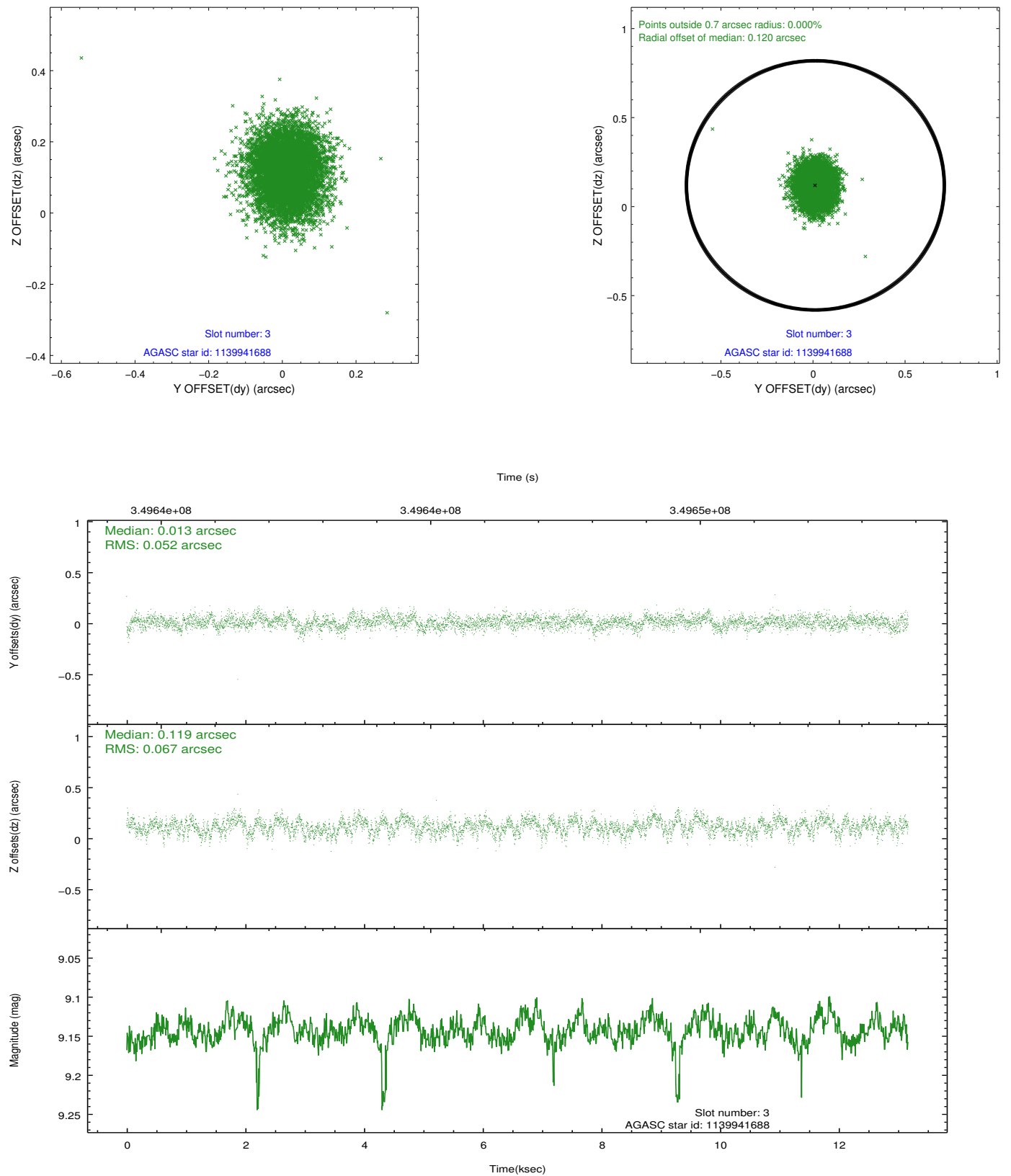


### Slot Statistics

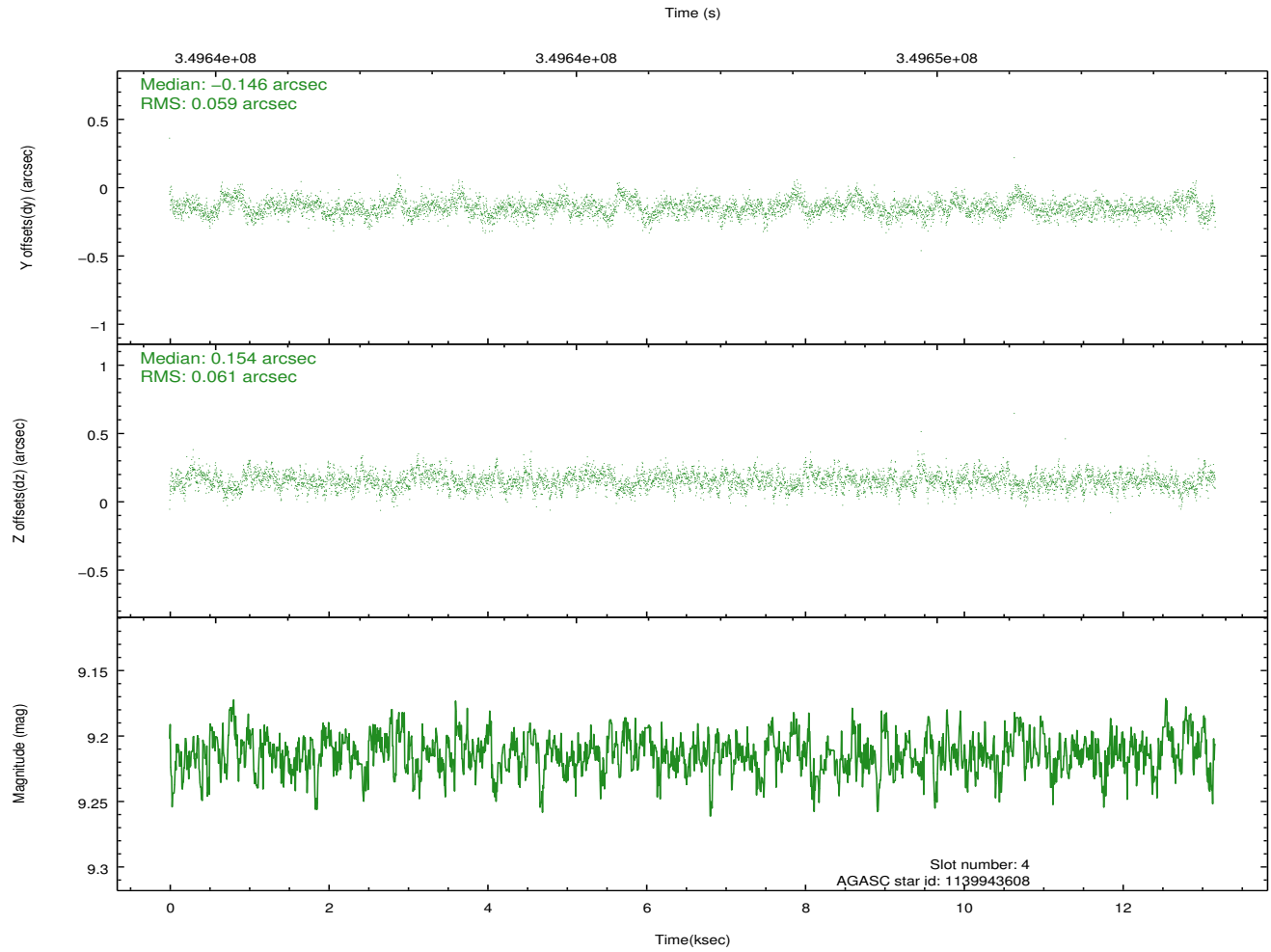
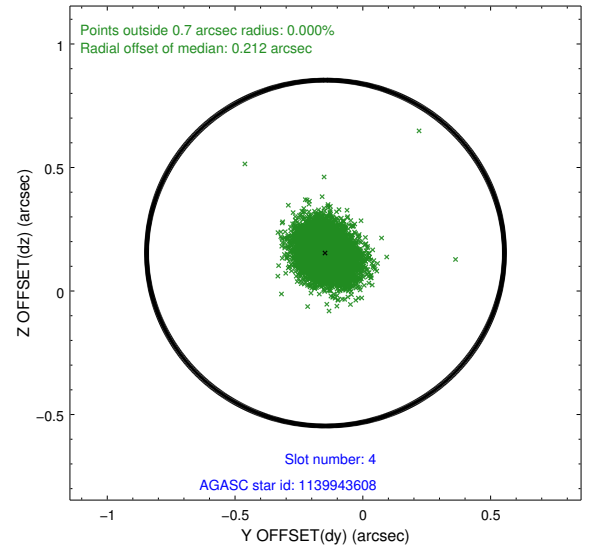
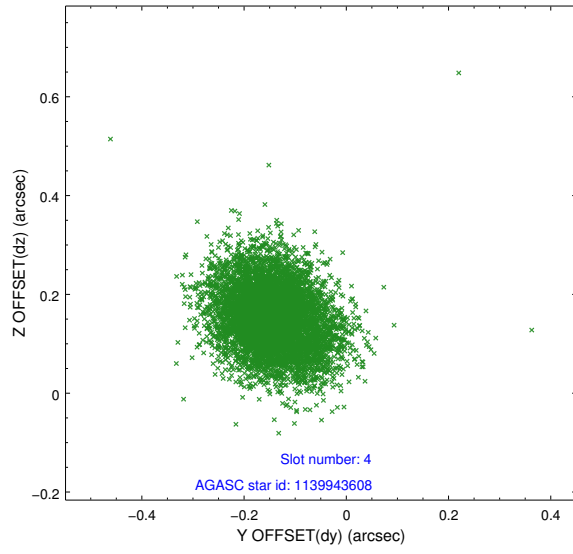
slot	status	id	mag	n_pts	med_dy	med_dz	dr1	dr2	ra	dec	mean_y	mean_z
0	FID	ACIS-S-2	6.89	3213	-0.044	-0.019	0.010	0.016	0.000000	0.000000	-766.61	-1737.74
1	FID	ACIS-S-4	6.98	3212	0.186	0.027	0.011	0.020	0.000000	0.000000	2146.72	170.42
2	FID	ACIS-S-5	7.00	3213	-0.173	0.001	0.007	0.012	0.000000	0.000000	-1819.12	164.47
3	GUIDE	1139941688	9.14	6413	0.013	0.119	0.090	0.145	238.371800	-54.158507	555.53	-1335.80
4	GUIDE	1139943608	9.21	6414	-0.146	0.154	0.089	0.147	238.761095	-54.002426	1083.26	-2181.01
5	GUIDE	1139945912	9.13	6418	-0.073	0.101	0.096	0.153	238.361289	-54.201826	401.22	-1308.15
6	GUIDE	1140458608	8.44	6419	0.041	-0.049	0.071	0.116	237.337107	-54.507511	-631.06	874.07
7	GUIDE	1140334088	9.13	6405	0.161	-0.320	0.086	0.139	236.618620	-54.783934	-1597.79	2389.69

## 2.4 Star Slots

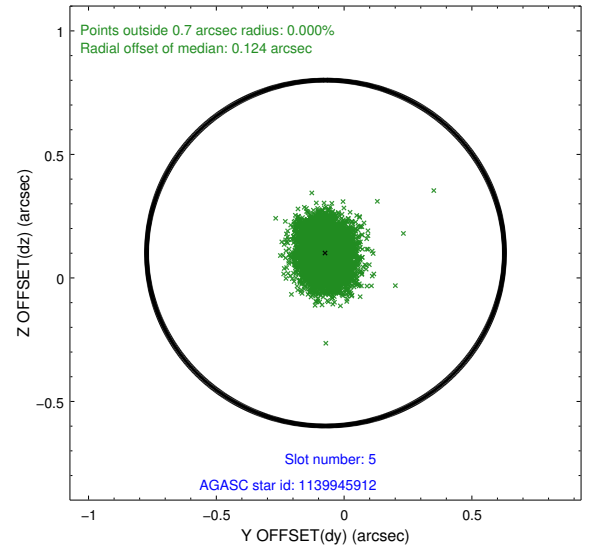
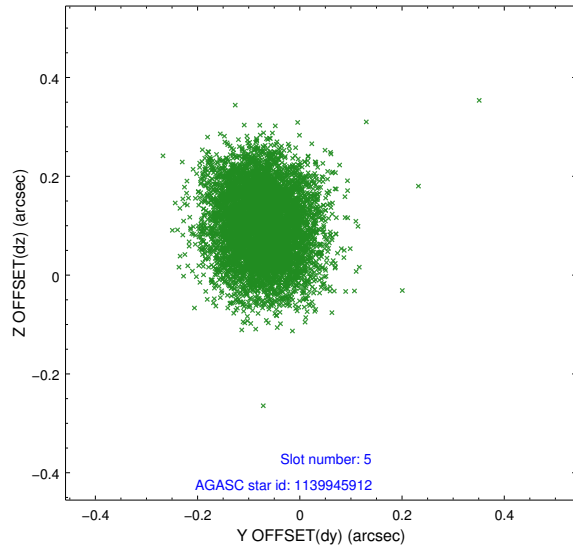
### 2.4.1 Slot 3



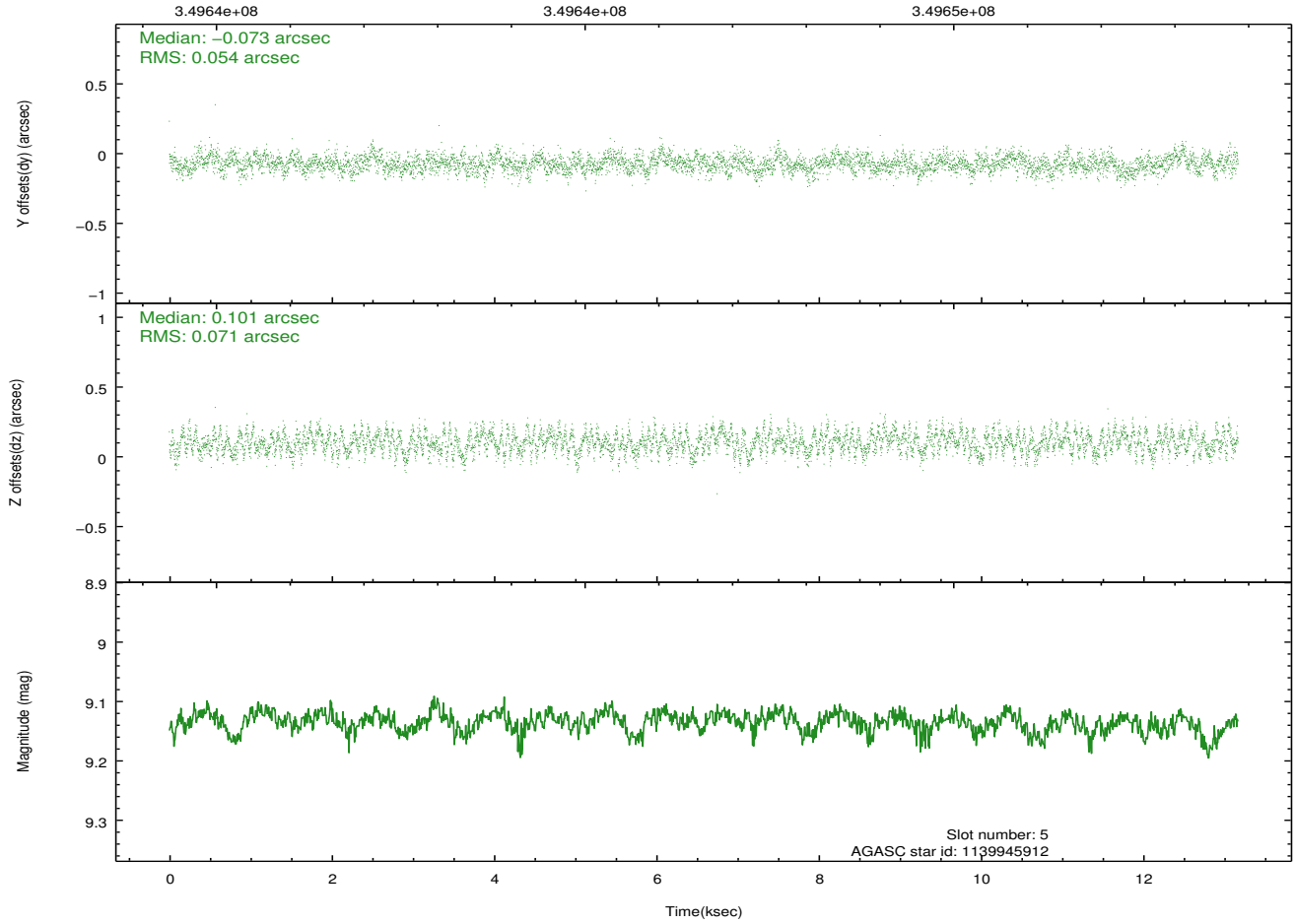
## 2.4.2 Slot 4



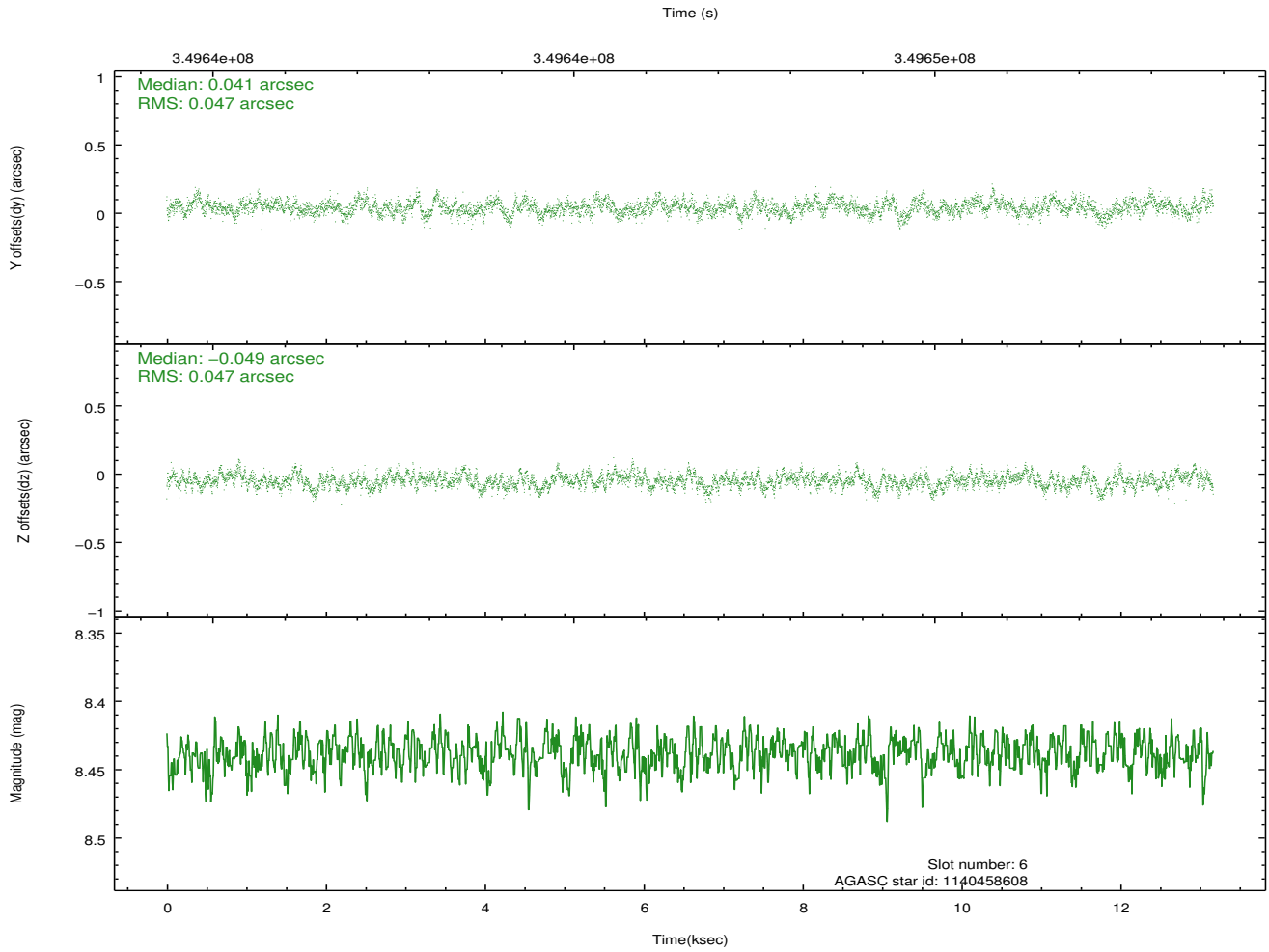
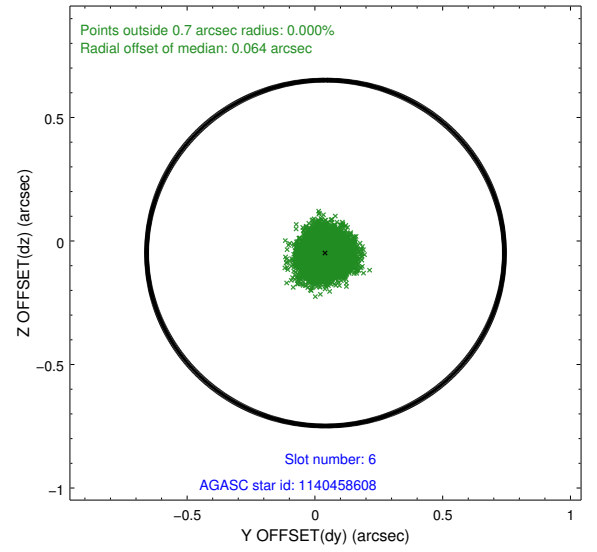
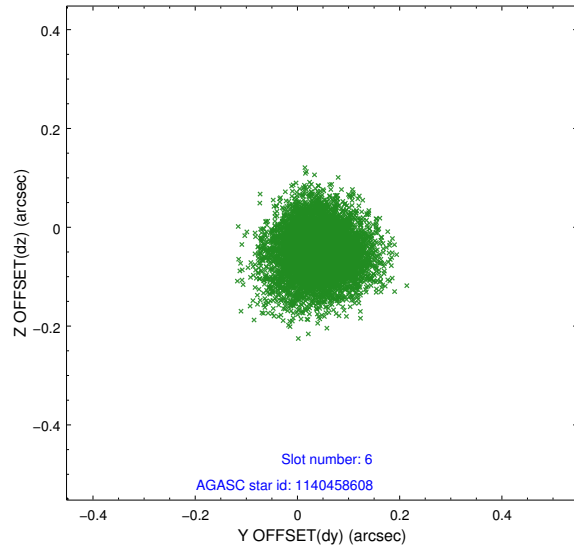
### 2.4.3 Slot 5



Time (s)

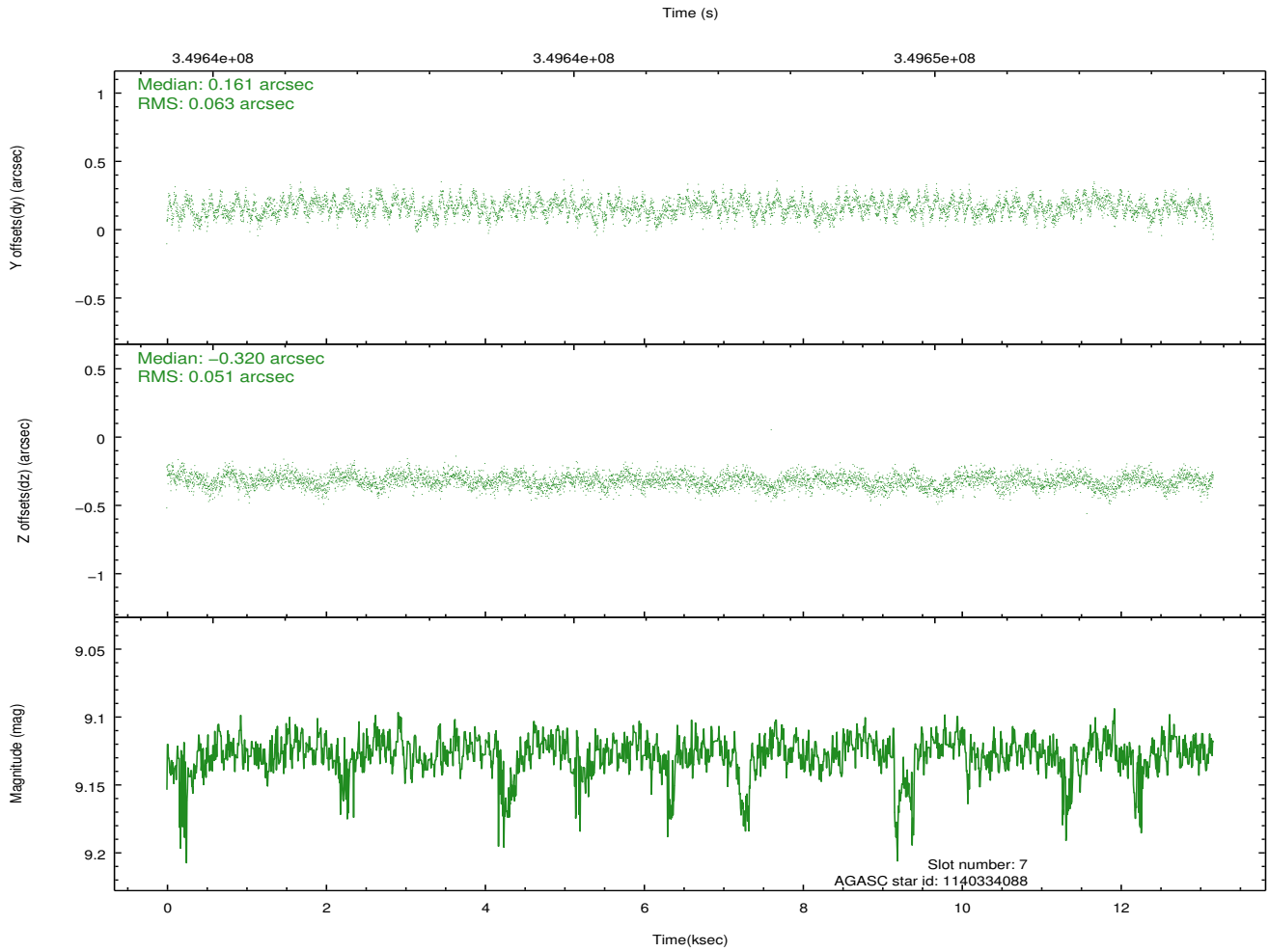
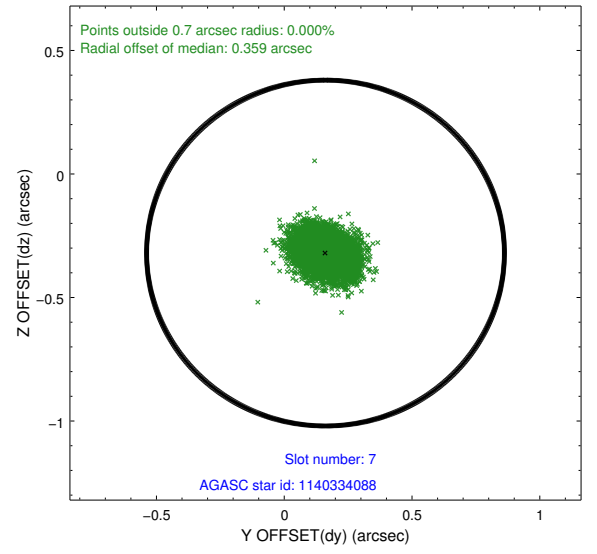
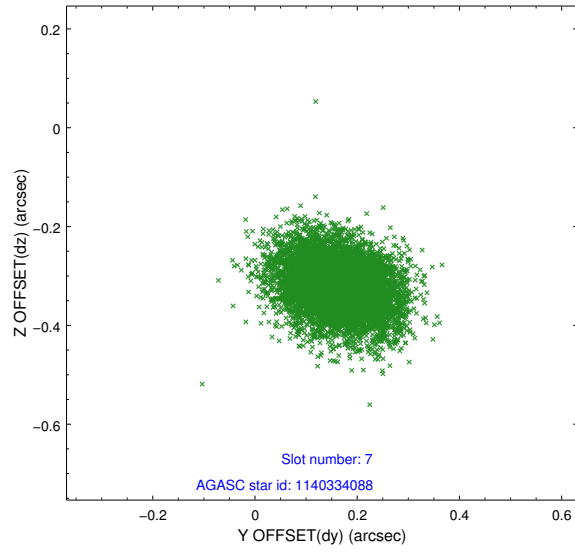


## 2.4.4 Slot 6



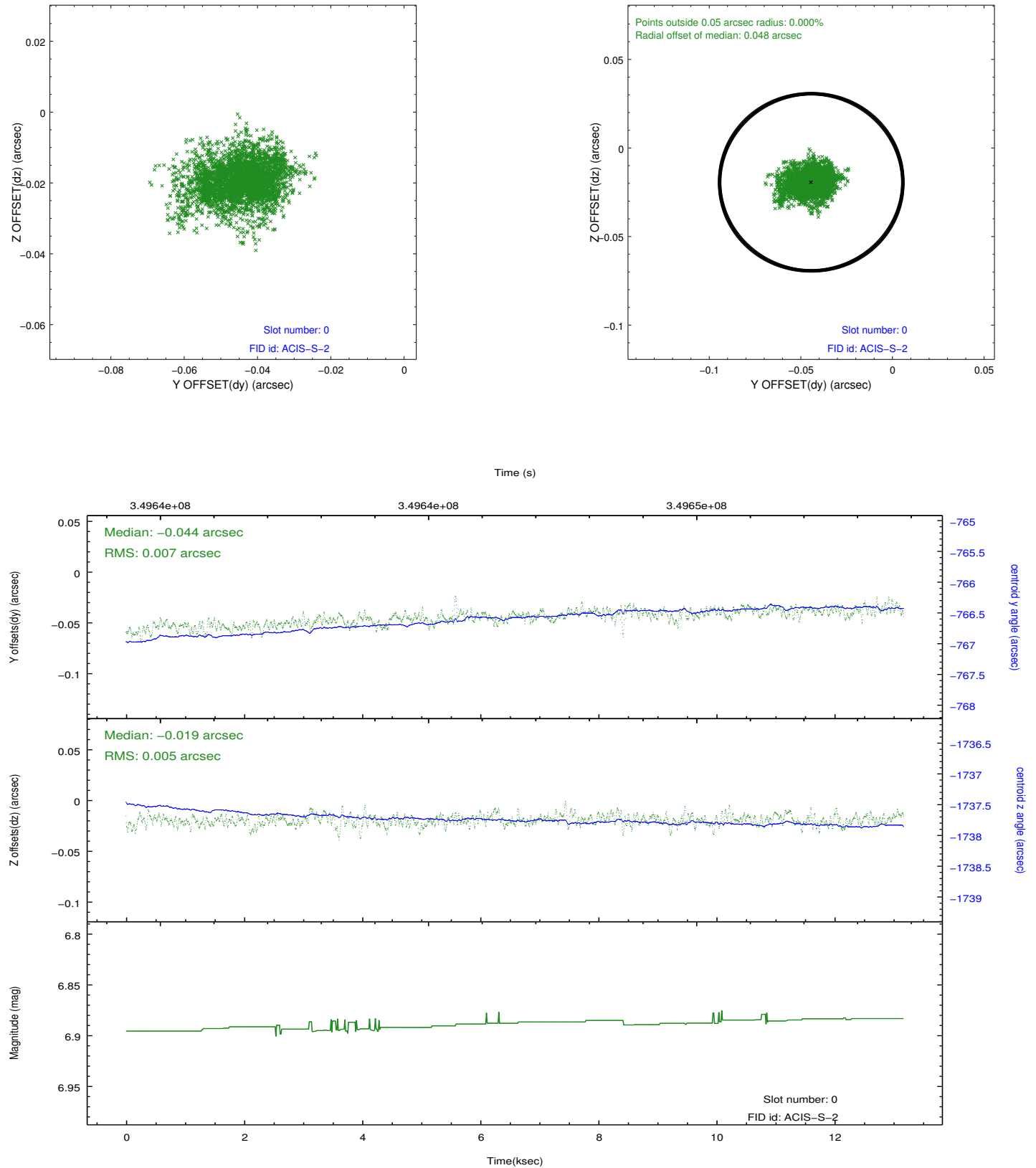


## 2.4.5 Slot 7

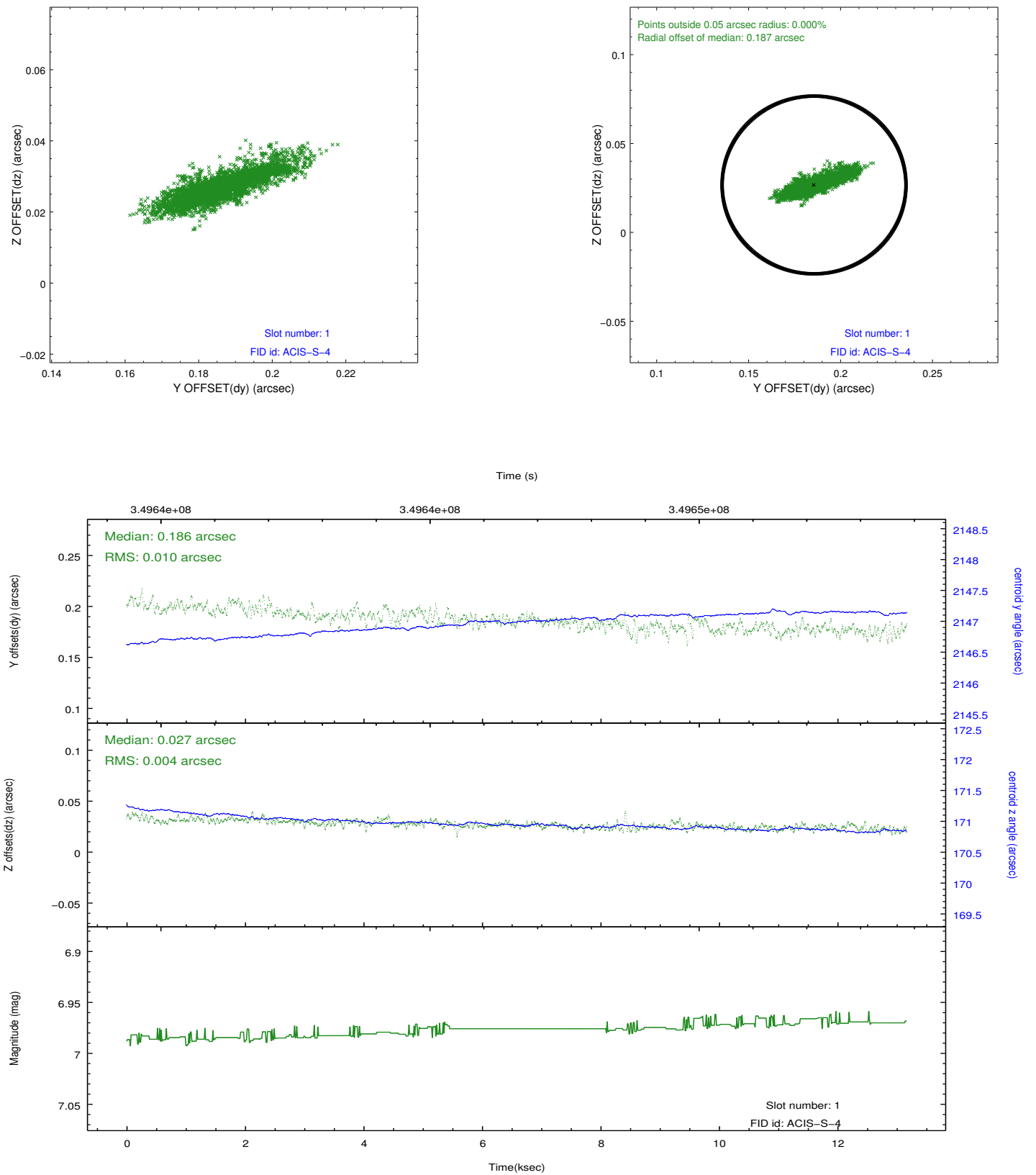


## 2.5 FID Slots

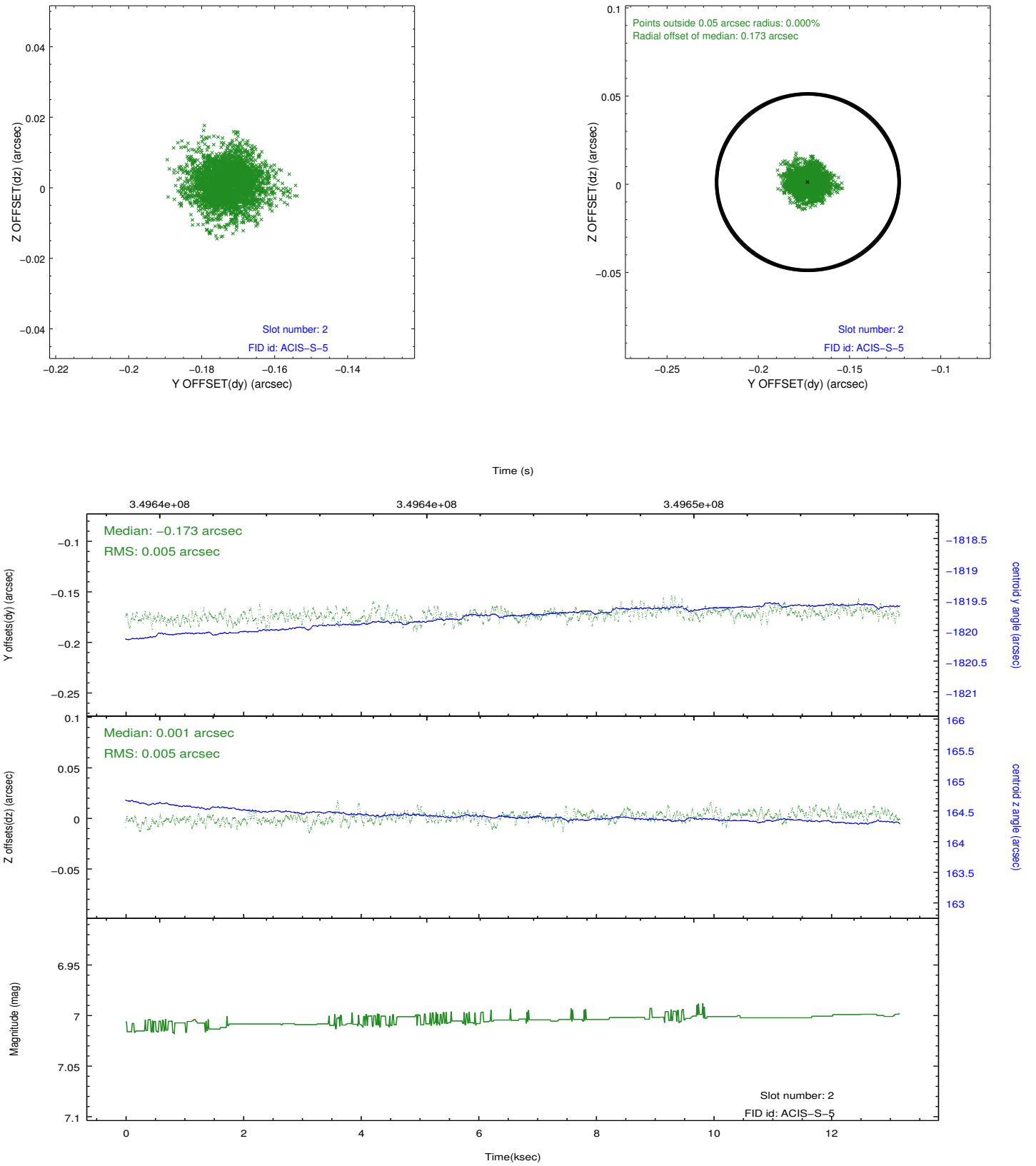
### 2.5.1 Slot 0



## 2.5.2 Slot 1



### 2.5.3 Slot 2



## A Summary

### A.1 Status

V&V Scientist	Joy Nichols
V&V Date (YYYY-MM-DD)	2012.05.30
V&V Edition	1
V&V Disposition and Status	OK
V&V Charge Time	13.164

### A.2 Comments