

V&V Reference Report

L2 ASCDS Version : 8.4.4

Observation 9988 - L2 Version 3
Chandra X-Ray Center

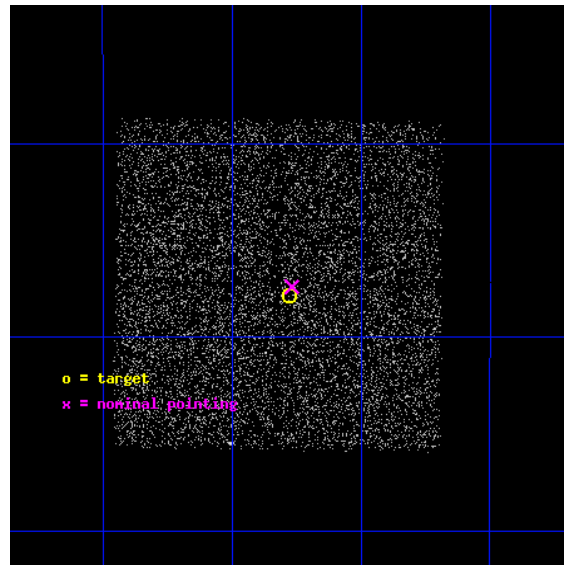
L2 Processing Date : Jun 1 2012

Contents

1	Front	2
2	OBI	3
2.1	OBI	3
2.1.1	Images	3
2.1.2	Bias	3
2.1.3	Parameters	4
2.1.4	Events	4
2.2	Compared Parameters	5
2.3	Aspect	6
2.4	Star Slots	9
2.4.1	Slot 3	9
2.4.2	Slot 4	10
2.4.3	Slot 5	11
2.4.4	Slot 7	12
2.5	FID Slots	13
2.5.1	Slot 0	13
2.5.2	Slot 1	14
2.5.3	Slot 2	15
A	Summary	16
A.1	Status	16
A.2	Comments	16

1 Front

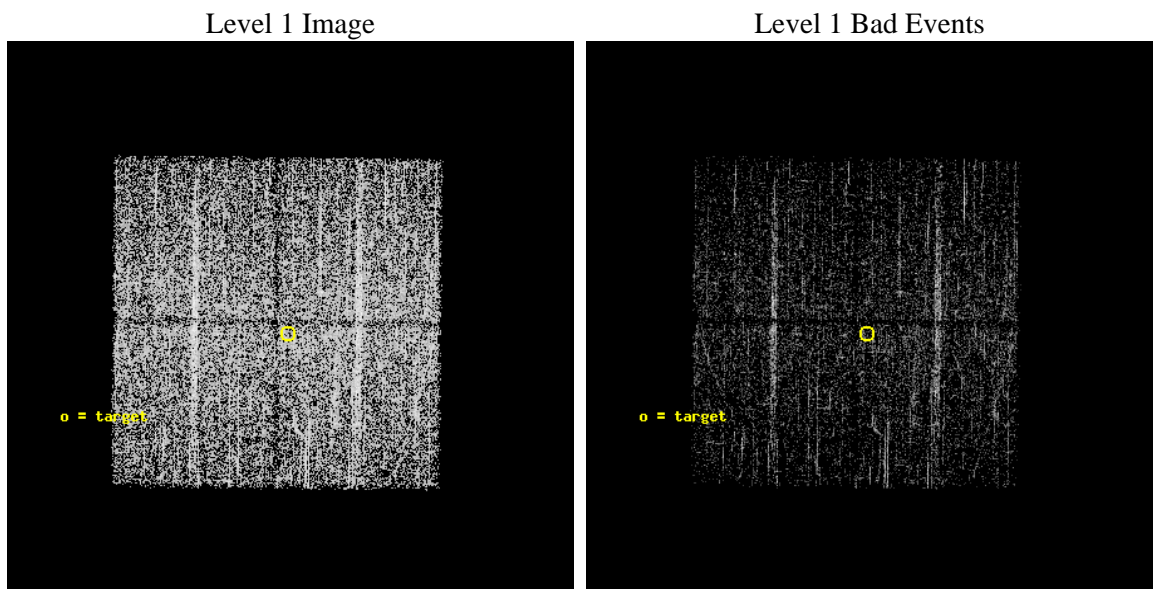
seq_num	400952	Sequence number
obs_id	9988	Observation id
title	Completing the Galactic Bulge Survey: categorising the plethora of faint X-ray sources in the Galactic Bulge	Proposal title
observer	dr Peter Jonker	Principal investigator
object	GBS3-10	Source name
dtcycle	0	
cycle	P	events from which exps? Prim/Second/Both
ra_targ	266.319792	Observer's specified target RA [deg]
dec_targ	-25.797972	Observer's specified target Dec [deg]
ra_nom	266.317033799	Nominal RA [deg]
dec_nom	-25.790078491469	Nominal Dec [deg]
roll_nom	90.558363514889	Nominal Roll [deg]
revision	3	Processing version of data
ontime	2185.5000168085	Sum of GTIs [s]
livetime	2156.9448501472	Livetime [s]
ontime0	2185.5000168085	Sum of GTIs [s]
ontime1	2185.5000168085	Sum of GTIs [s]
ontime2	2185.5000168085	Sum of GTIs [s]
ontime3	2185.5000168085	Sum of GTIs [s]
l2events	10345	Number of level 2 events



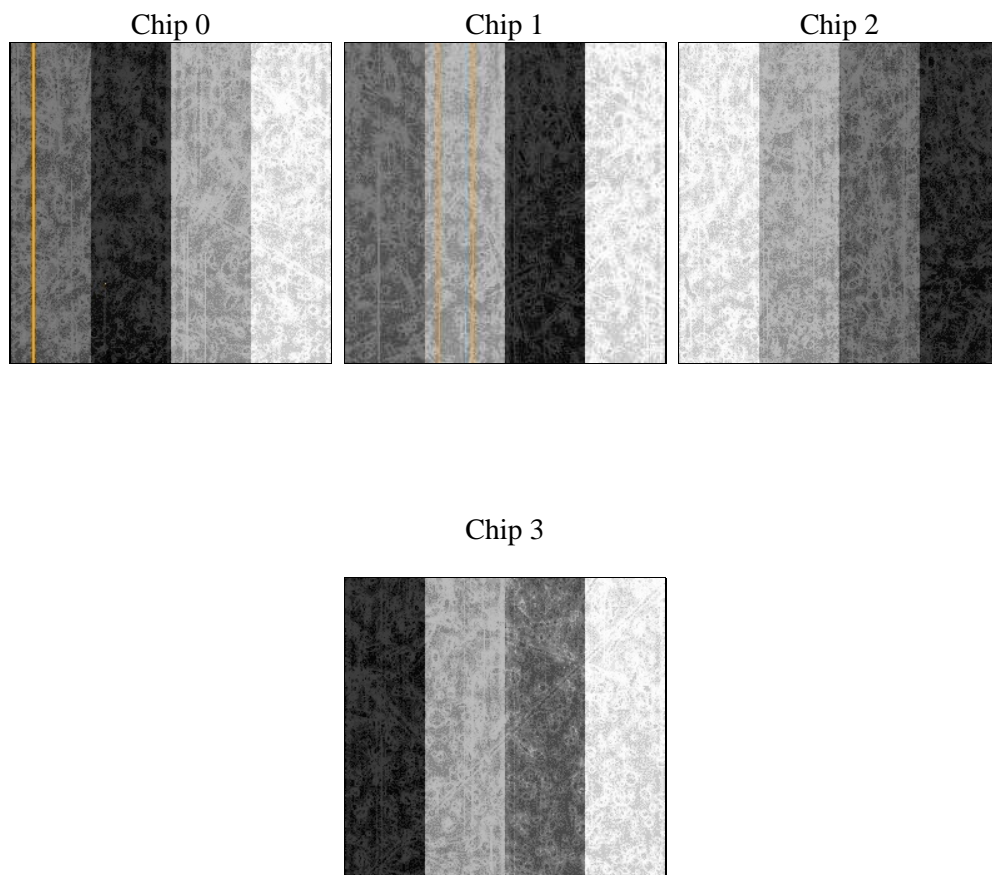
2 OBI

2.1 OBI

2.1.1 Images



2.1.2 Bias



2.1.3 Parameters

obi_num	0	Obi number	sched_exp_time	2000.000000	[s] Scheduled observation exposure time
ascdsver	8.4.4	Processing system revision	ontime	2185.5000168085	Sum of GTIs [s]
caldsver	4.4.9	 	ontime0	2185.5000168085	Sum of GTIs [s]
date	2012-06-02T00:10:11	Date and time of file creation	ontime1	2185.5000168085	Sum of GTIs [s]
revision	3	Processing version of data	ontime2	2185.5000168085	Sum of GTIs [s]
			ontime3	2185.5000168085	Sum of GTIs [s]
			l1events	99564	Number of level 1 events

2.1.4 Events

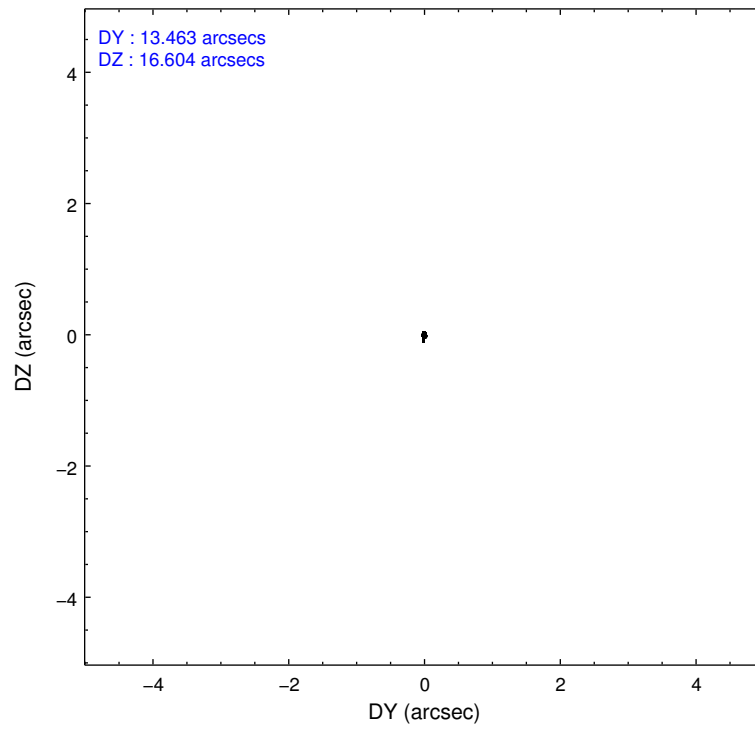
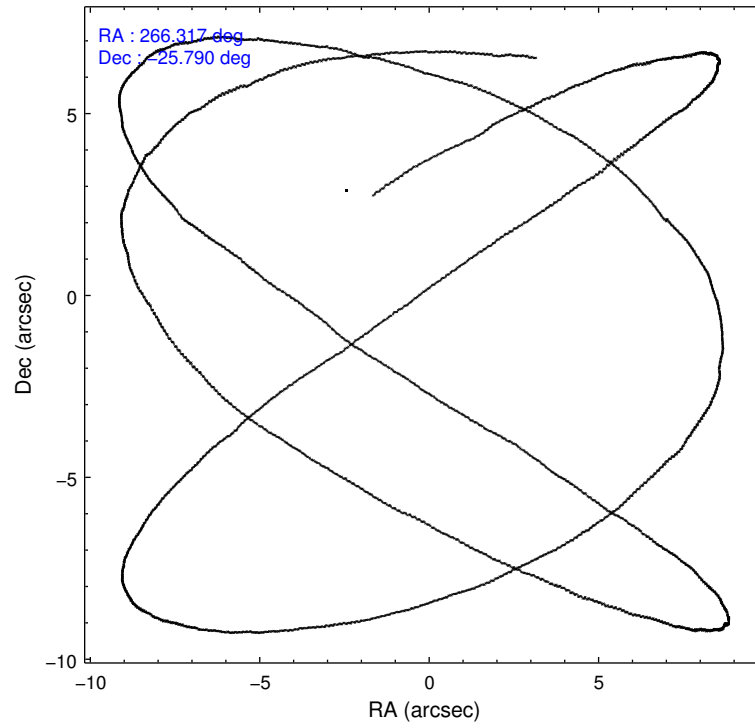
	ccd 0	ccd 1	ccd 2	ccd 3
level 1 events	23061	23793	25551	27159
rejected events	20040	20581	22714	24278
rejected %	86%	86%	88%	89%

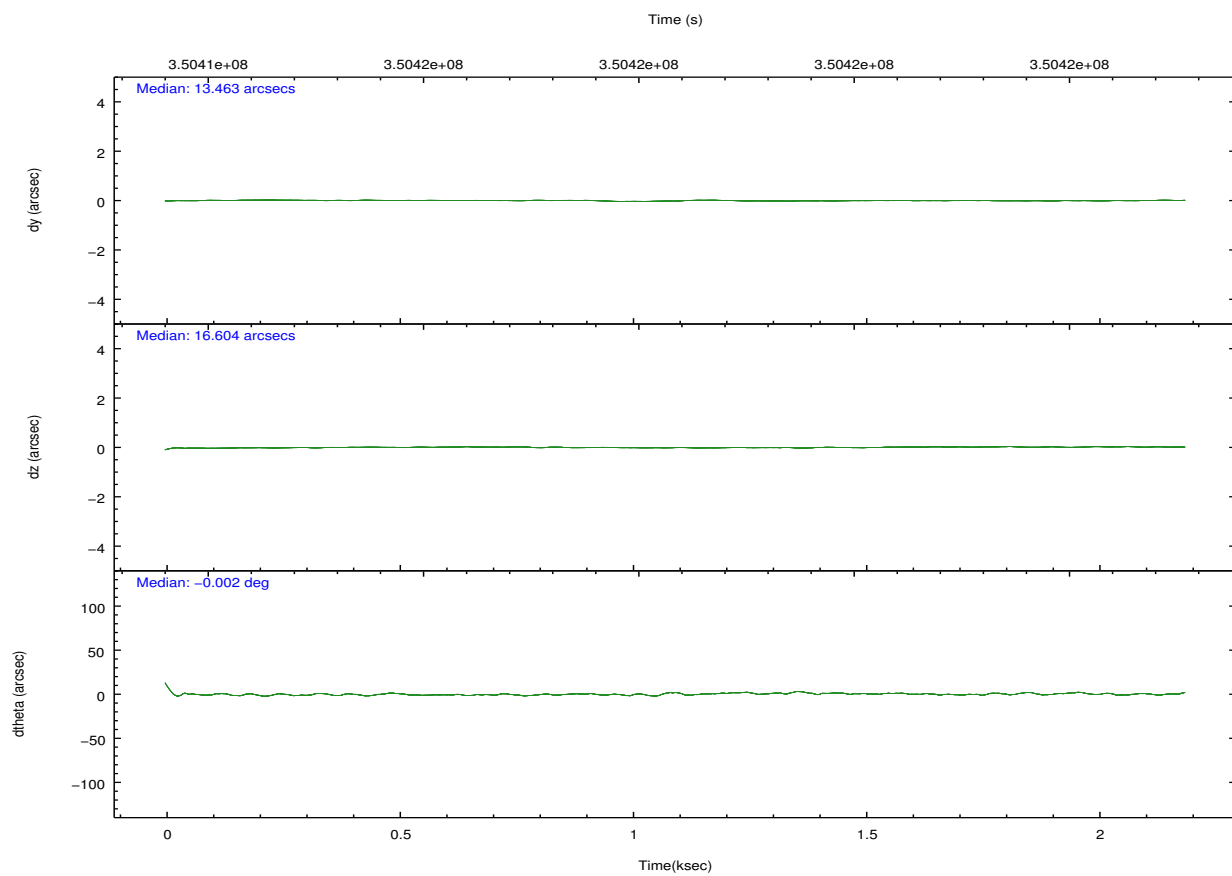
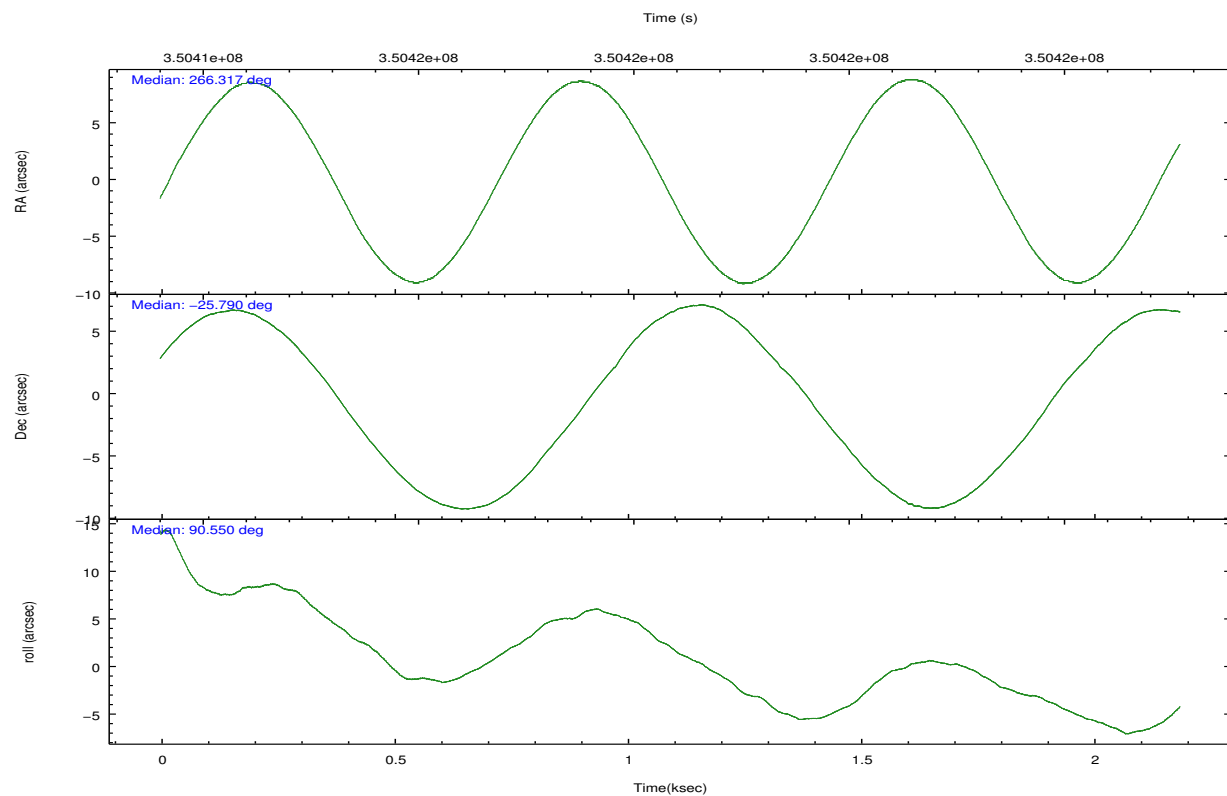
	ccd 0	ccd 1	ccd 2	ccd 3
grade 0 events	1539	1553	1506	1477
	6%	6%	5%	5%
grade 1 events	19	19	19	28
	0%	0%	0%	0%
grade 2 events	734	841	665	655
	3%	3%	2%	2%
grade 3 events	332	340	308	295
	1%	1%	1%	1%
grade 4 events	290	334	290	308
	1%	1%	1%	1%
grade 5 events	1073	1148	1049	1312
	4%	4%	4%	4%
grade 6 events	538	663	512	604
	2%	2%	2%	2%
grade 7 events	18536	18895	21202	22480
	80%	79%	82%	82%

2.2 Compared Parameters

Parameter	Planned	Actual	Parameter	Planned	Actual
Instrument	ACIS	ACIS	Obspar format version number	7	7
Detector	ACIS-0123	ACIS-0123	Obspar file type	PREDICTED	ACTUAL
Grating	NONE	NONE	Obspar update status	NONE	UPDATED
Data mode	VFAINT	VFAINT	Number of optional ACIS chips dropped	0	0
Observation mode	POINTING	POINTING	On-chip summing requested	N	N
[deg] Pointing RA	266.332673	266.3170337989988	Subarray requested	NONE	NONE
[deg] Pointing Dec	-25.813903	-25.79007849146949	Alternating exposures requested	N	N
[deg] Pointing Roll	90.356477	90.55836351488895	[s] Primary exposure time	0.000000	3.1
[mm] SIM focus pos	-0.782348	-0.7809083437167272			
[mm] SIM defocus	0	0.001439871863259334			
[mm] SIM translation stage pos	-233.592463	-233.5874344608287			
[mm] SIM translation stage offset	0	-0.005018542100998502			
[s] Observation start time (MET)	350414678.184000	350414302.92153			
Observation start date	2009-02-07T17:23:32	2009-02-07T17:18:22			
[s] Observation end time (MET)	350416678.184000	350416812.63416			
Observation end date	2009-02-07T17:56:52	2009-02-07T18:00:12			
Read mode	TIMED	TIMED			

2.3 Aspect



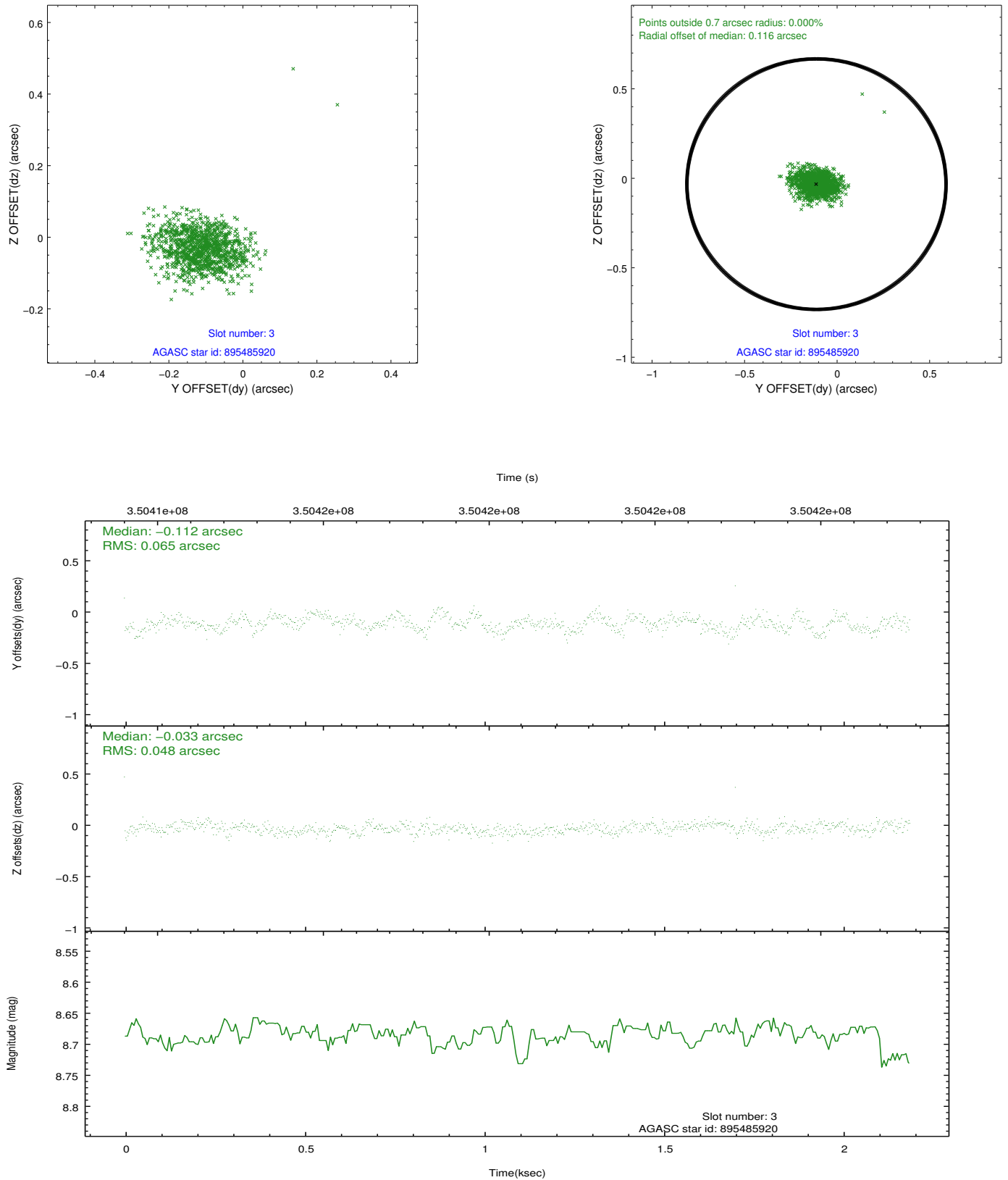


Slot Statistics

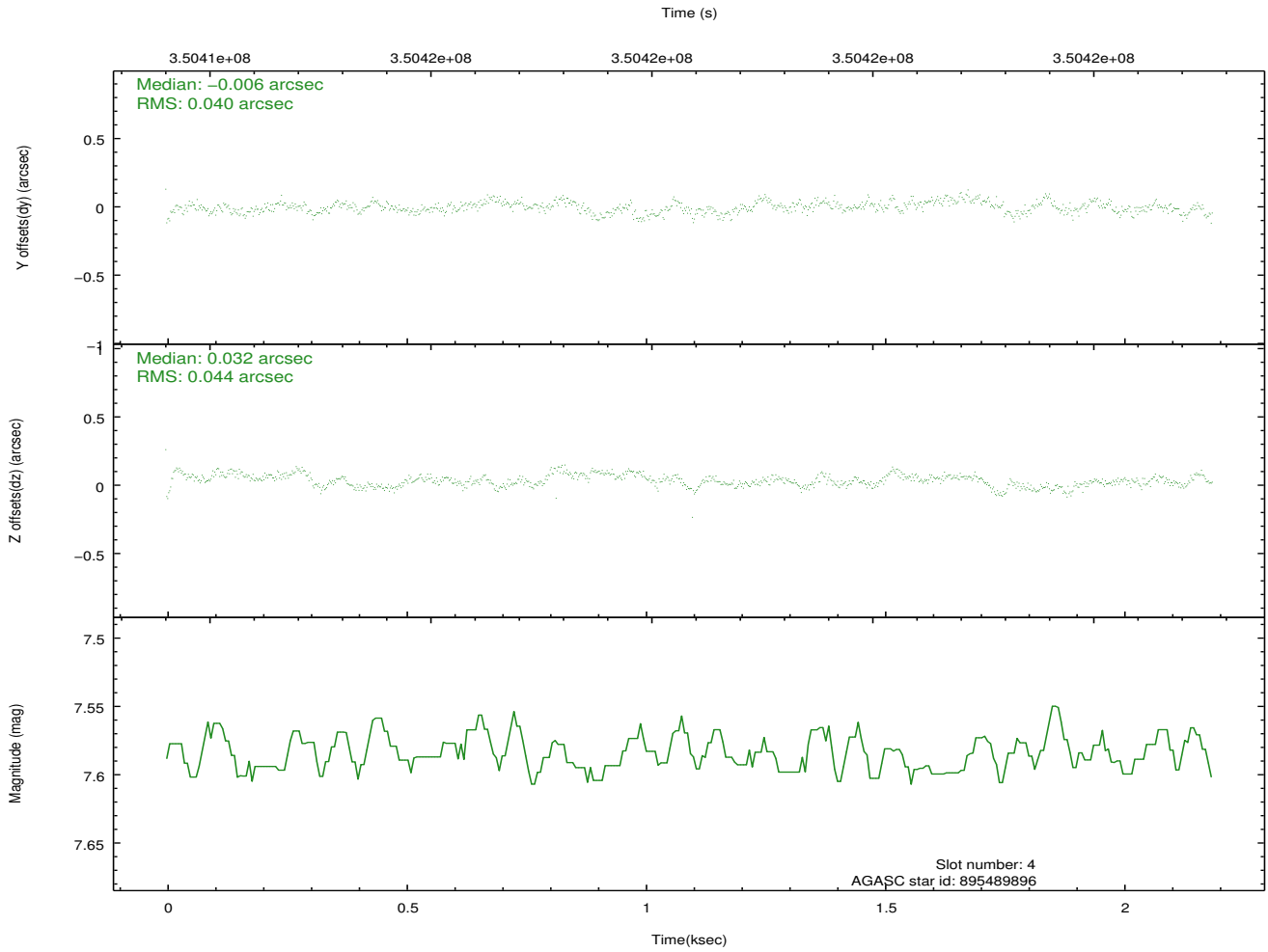
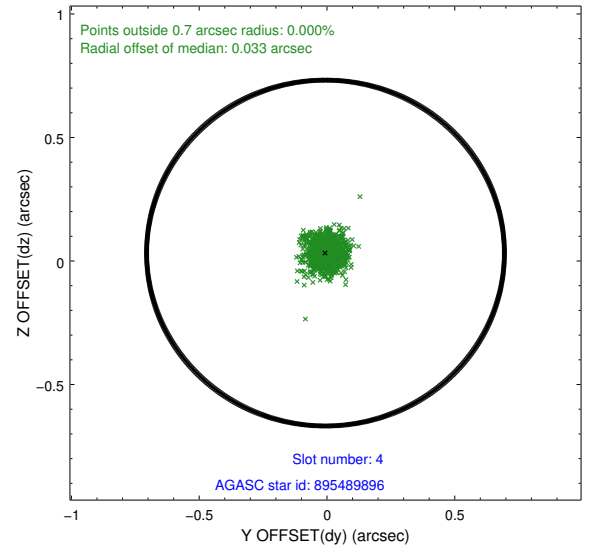
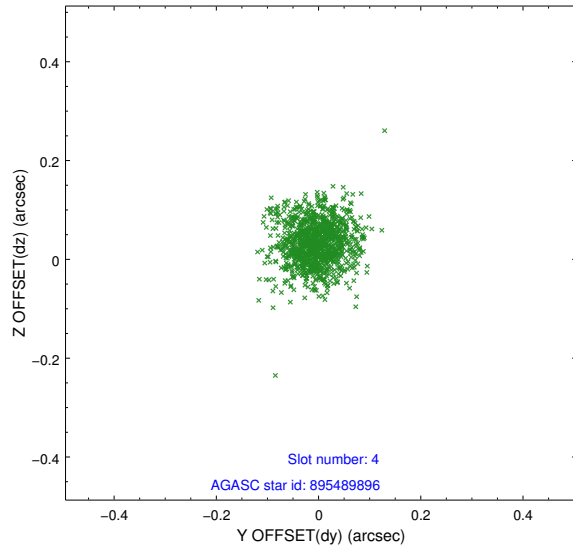
slot	status	id	mag	n_pts	med_dy	med_dz	dr1	dr2	ra	dec	mean_y	mean_z
0	FID	ACIS-I-1	7.03	534	-0.045	-0.027	0.010	0.016	0.000000	0.000000	925.99	-840.27
1	FID	ACIS-I-2	6.95	534	-0.158	-0.050	0.007	0.011	0.000000	0.000000	-766.56	-848.23
2	FID	ACIS-I-4	6.95	534	0.105	0.143	0.007	0.013	0.000000	0.000000	2144.67	1058.18
3	GUIDE	895485920	8.68	1066	-0.112	-0.033	0.083	0.136	266.932426	-25.188840	2233.23	-1967.31
4	GUIDE	895489896	7.58	1068	-0.006	0.032	0.062	0.103	266.605795	-26.200300	-1395.82	-875.32
5	GUIDE	896009584	9.24	1065	0.176	0.217	0.098	0.158	266.891313	-26.347528	-1937.61	-1790.88
6	OMITTED		0.00	0	0.000	0.000	0.000	0.000	0.000000	0.000000	0.00	0.00
7	GUIDE	896015880	8.50	1067	-0.060	-0.216	0.062	0.101	265.986633	-26.306686	-1771.17	1125.89

2.4 Star Slots

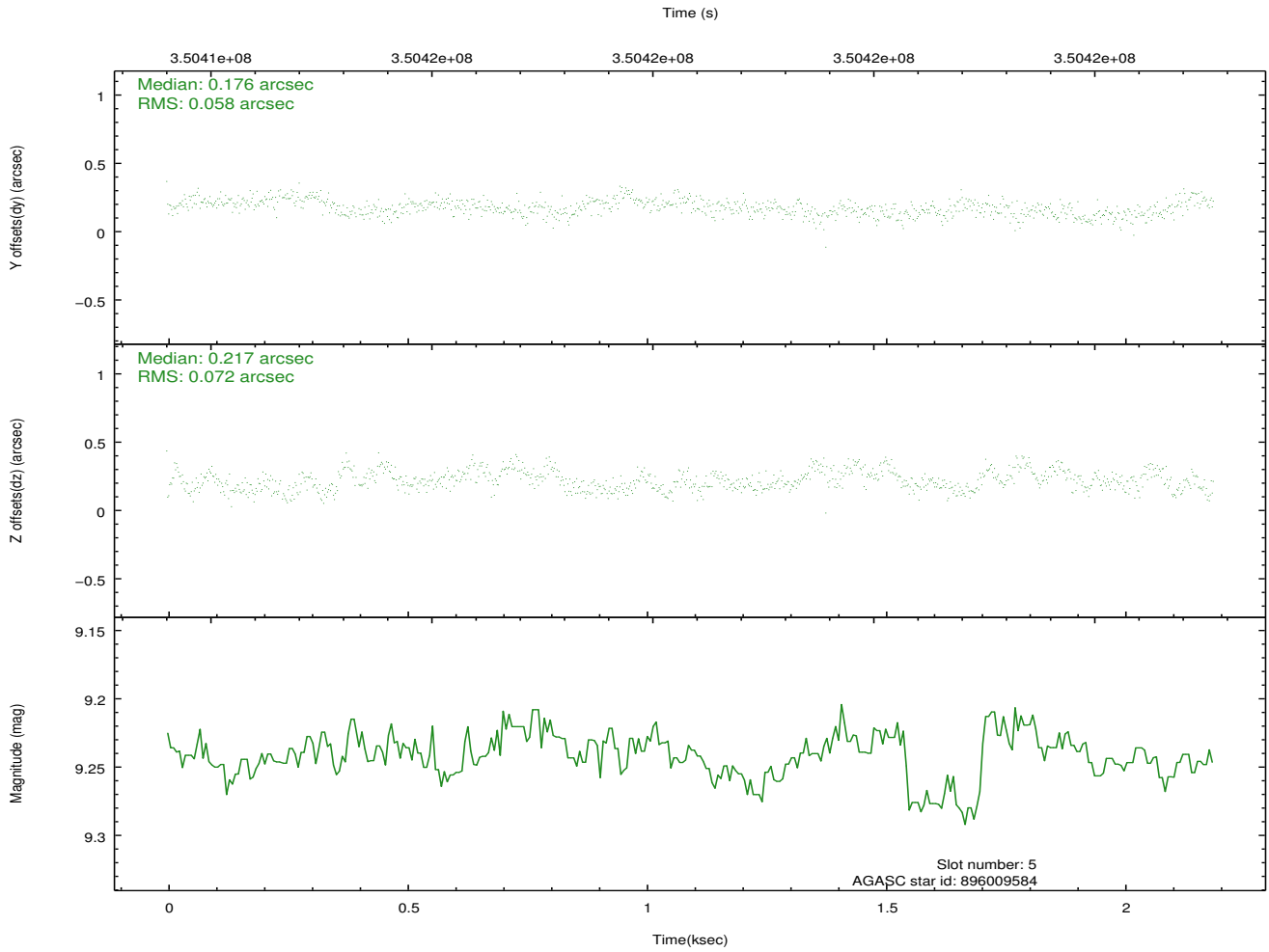
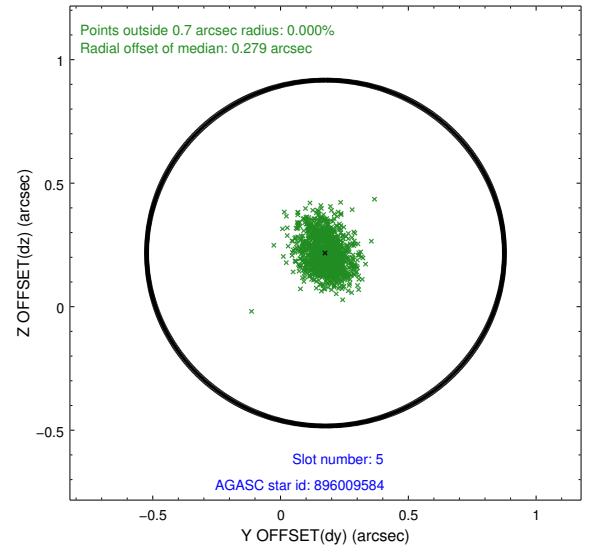
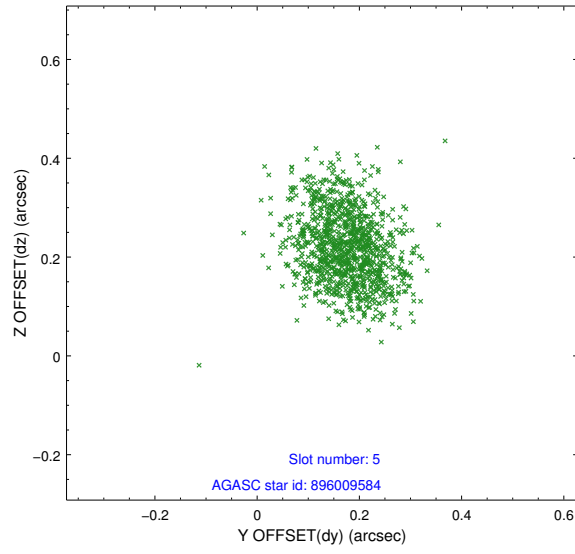
2.4.1 Slot 3



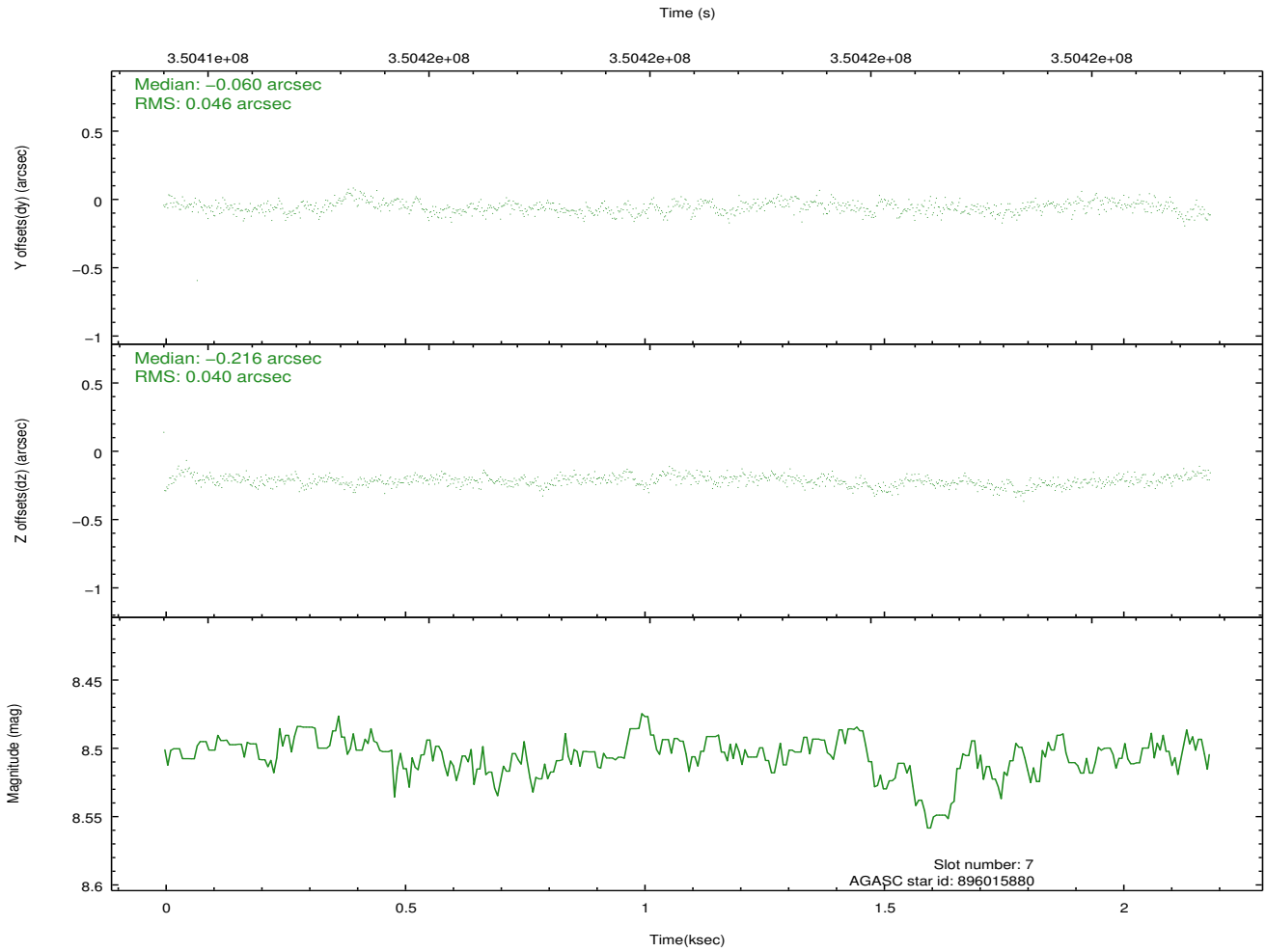
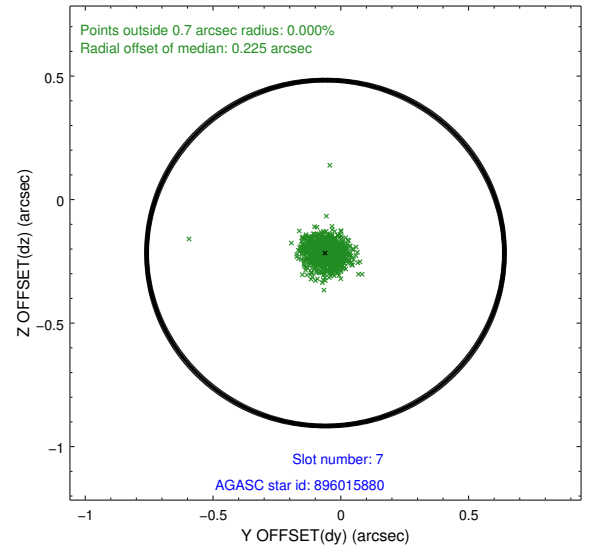
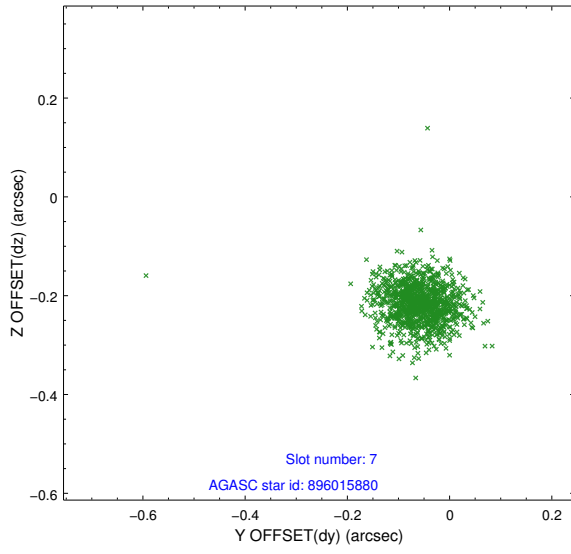
2.4.2 Slot 4



2.4.3 Slot 5

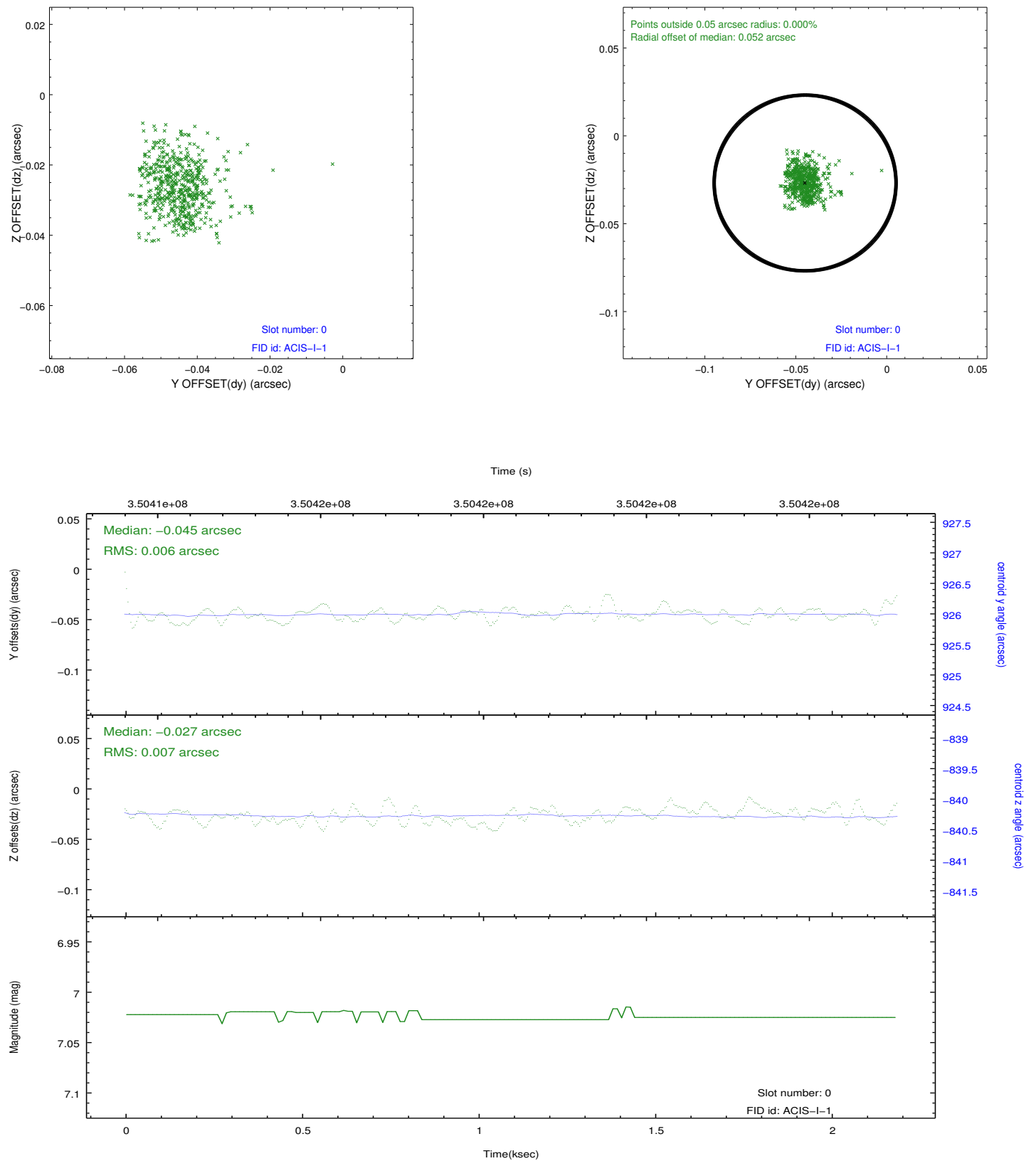


2.4.4 Slot 7

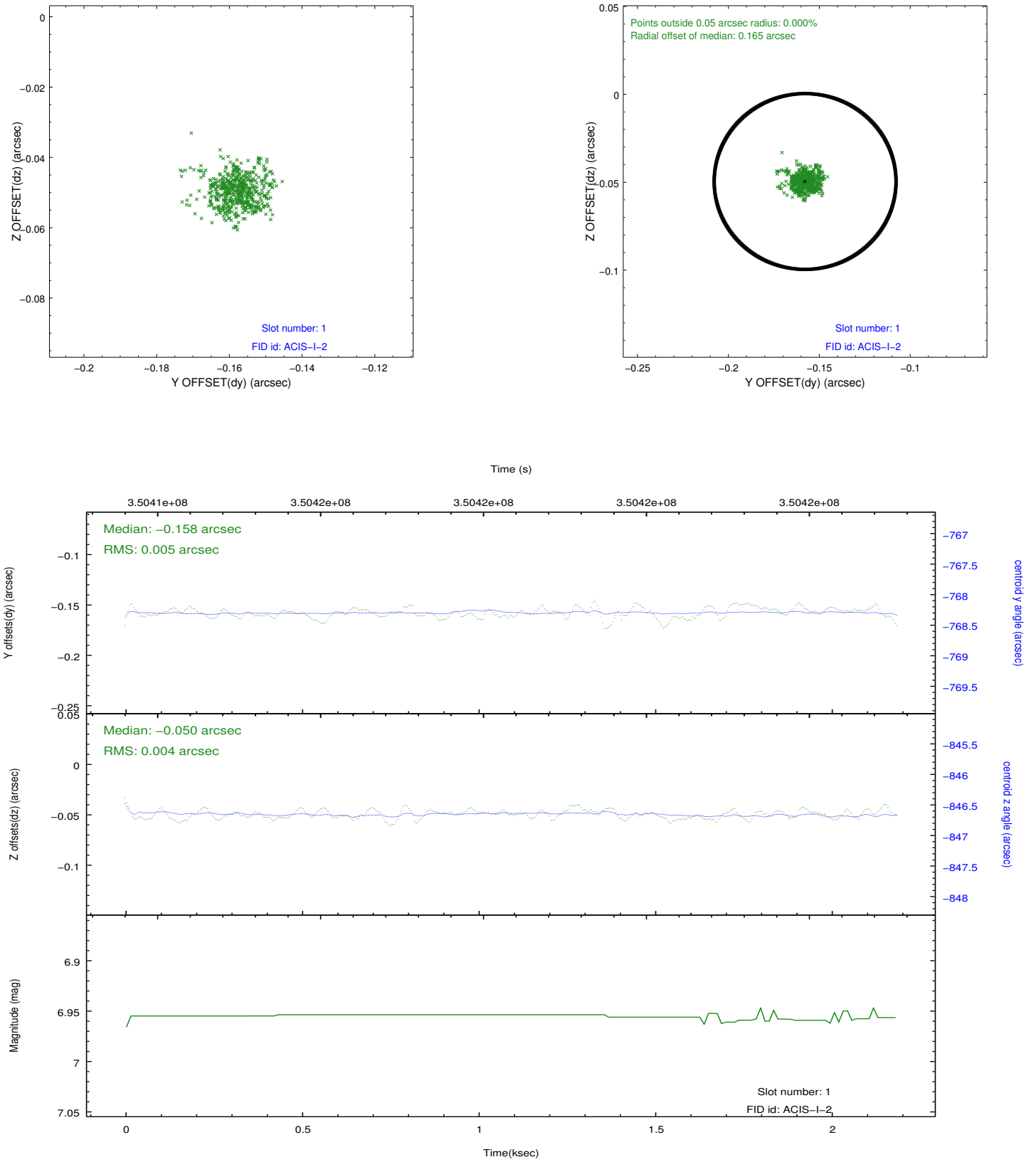


2.5 FID Slots

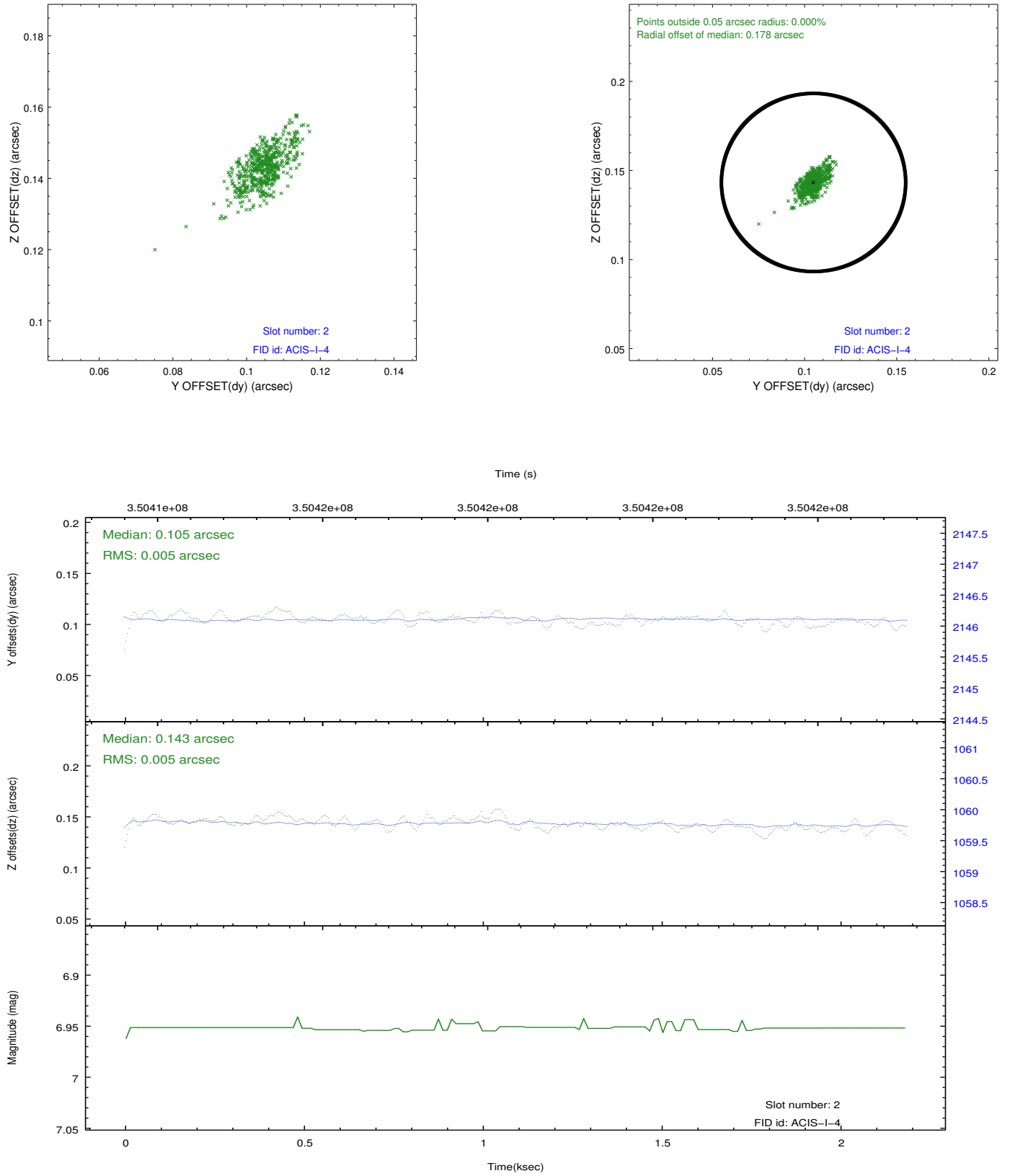
2.5.1 Slot 0



2.5.2 Slot 1



2.5.3 Slot 2



A Summary

A.1 Status

V&V Scientist	Beth Sundheim
V&V Date (YYYY-MM-DD)	2012.06.07
V&V Edition	1
V&V Disposition and Status	OK
V&V Charge Time	2.18550001

A.2 Comments

Joint proposal with NOAO.

The guide star in slot 6 was removed from the aspect solution due to poor data quality. The aspect solution is improved by the removal of this star from the solution.