

V&V Reference Report

L2 ASCDS Version : 8.4.4

Observation 10064 - L2 Version 2
Chandra X-Ray Center

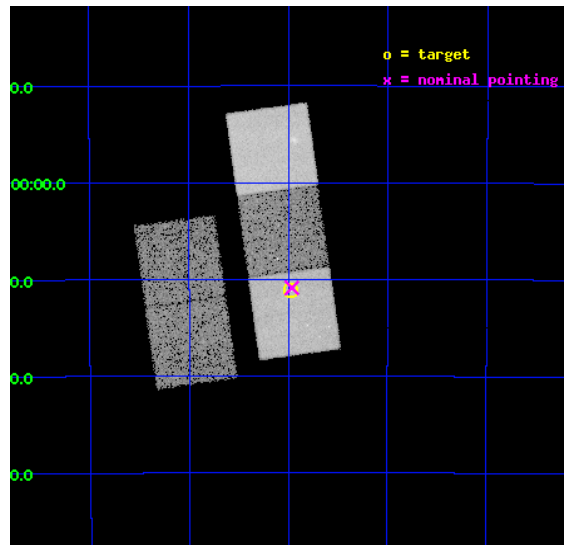
L2 Processing Date : Jun 3 2012

Contents

1	Front	2
2	OBI	3
2.1	OBI	3
2.1.1	Images	3
2.1.2	Bias	3
2.1.3	Parameters	4
2.1.4	Events	4
2.2	Compared Parameters	5
2.3	Aspect	6
2.4	Star Slots	9
2.4.1	Slot 3	9
2.4.2	Slot 4	10
2.4.3	Slot 5	11
2.4.4	Slot 6	12
2.4.5	Slot 7	13
2.5	FID Slots	14
2.5.1	Slot 0	14
2.5.2	Slot 1	15
2.5.3	Slot 2	16
A	Summary	17
A.1	Status	17
A.2	Comments	17

1 Front

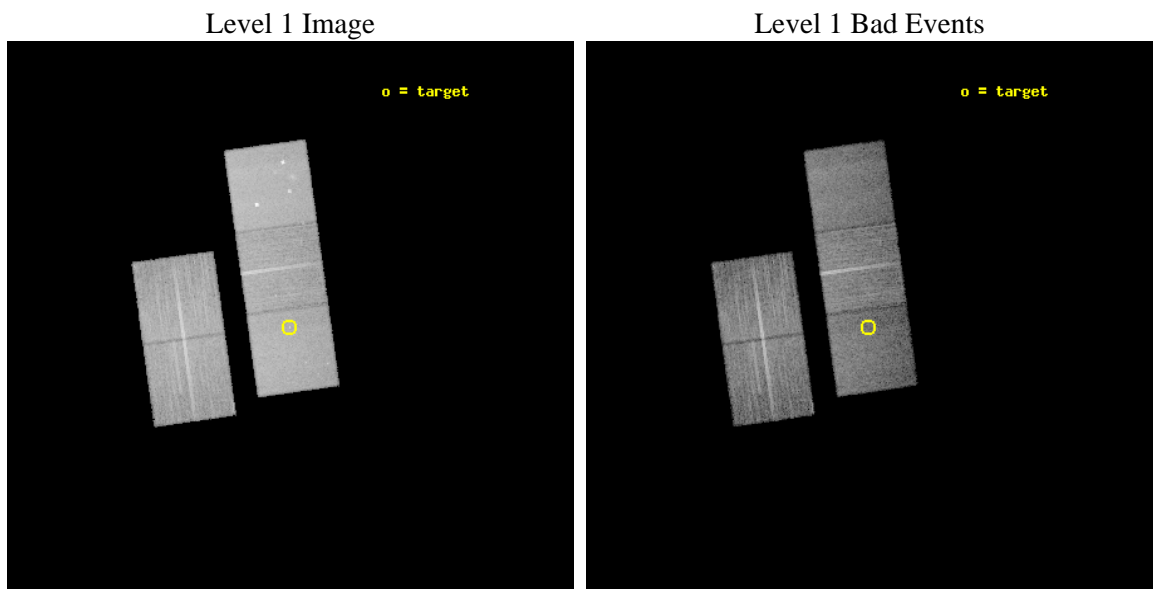
seq_num	401028	Sequence number
obs_id	10064	Observation id
title	The cooling neutron star in the super-Eddington accretor XTE J1701-462	Proposal title
observer	Dr Jeroen Homan	Principal investigator
object	XTE J1701-462	Source name
dtcycle	0	
cycle	P	events from which exps? Prim/Second/Both
ra_targ	255.24375	Observer's specified target RA [deg]
dec_targ	-46.185722	Observer's specified target Dec [deg]
ra_nom	255.2409732941	Nominal RA [deg]
dec_nom	-46.181333138382	Nominal Dec [deg]
roll_nom	82.054626457546	Nominal Roll [deg]
revision	2	Processing version of data
ontime	13435.400103331	Sum of GTIs [s]
livetime	13259.856709983	Livetime [s]
ontime2	13432.259122968	Sum of GTIs [s]
ontime3	13435.400103331	Sum of GTIs [s]
ontime5	13435.400103331	Sum of GTIs [s]
ontime6	13432.259103	Sum of GTIs [s]
ontime7	13435.400103331	Sum of GTIs [s]
l2events	165672	Number of level 2 events



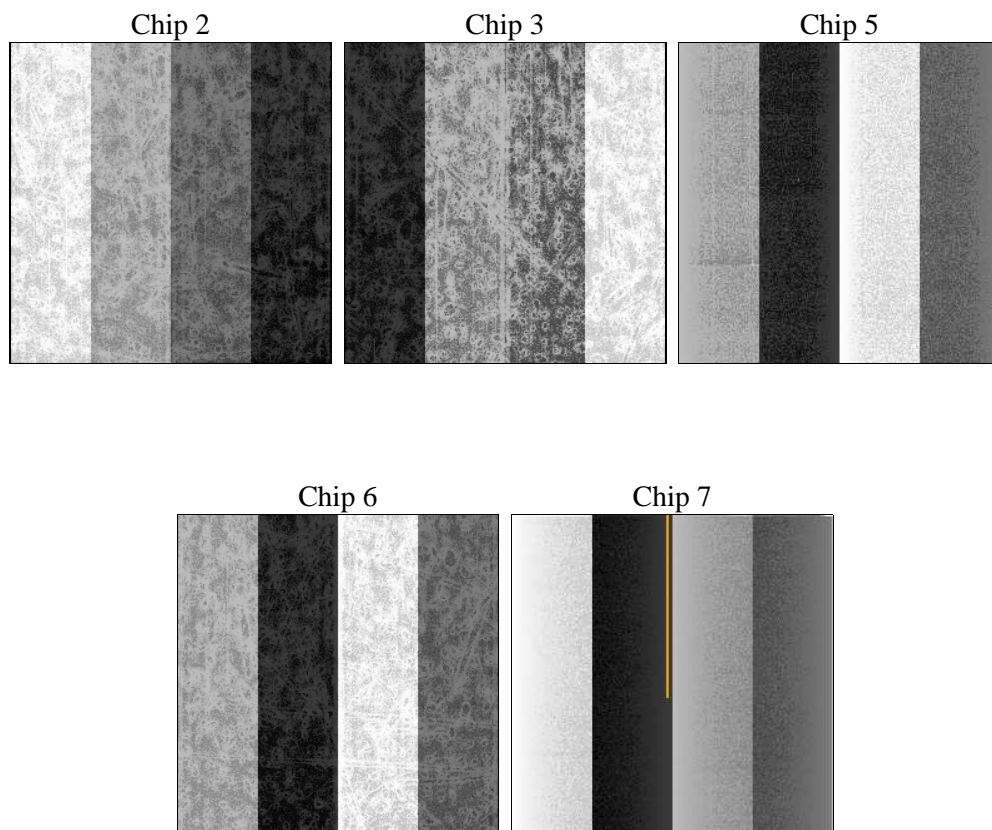
2 OBI

2.1 OBI

2.1.1 Images



2.1.2 Bias



2.1.3 Parameters

obi_num	0	Obi number	sched_exp_time	13400.000000	[s] Scheduled observation exposure time
ascdsver	8.4.4	Processing system revision	ontime	13435.400103331	Sum of GTIs [s]
caldsver	4.4.9	 	ontime2	13432.259122968	Sum of GTIs [s]
date	2012-06-03T06:21:12	Date and time of file creation	ontime3	13435.400103331	Sum of GTIs [s]
revision	2	Processing version of data	ontime5	13435.400103331	Sum of GTIs [s]
			ontime6	13432.259103	Sum of GTIs [s]
			ontime7	13435.400103331	Sum of GTIs [s]
			l1events	644615	Number of level 1 events

2.1.4 Events

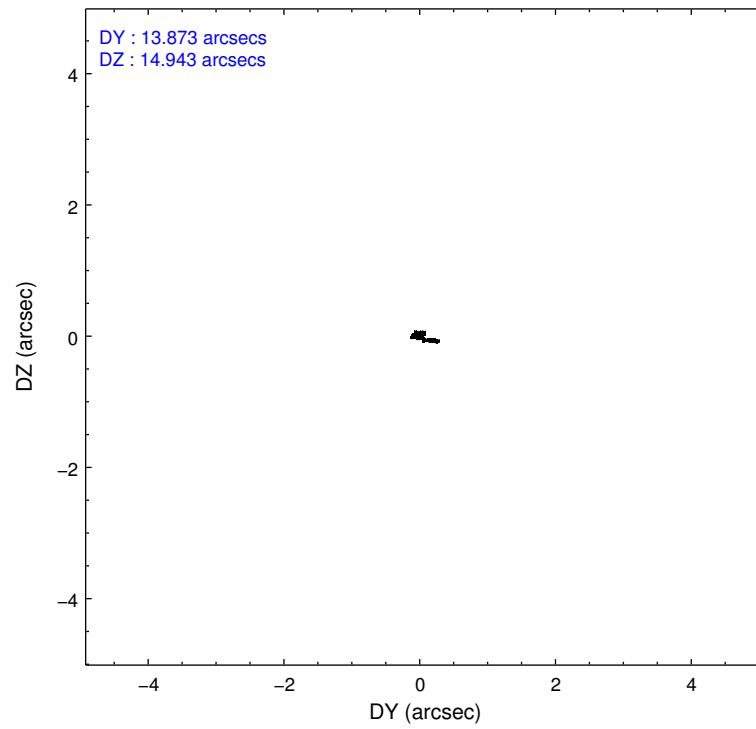
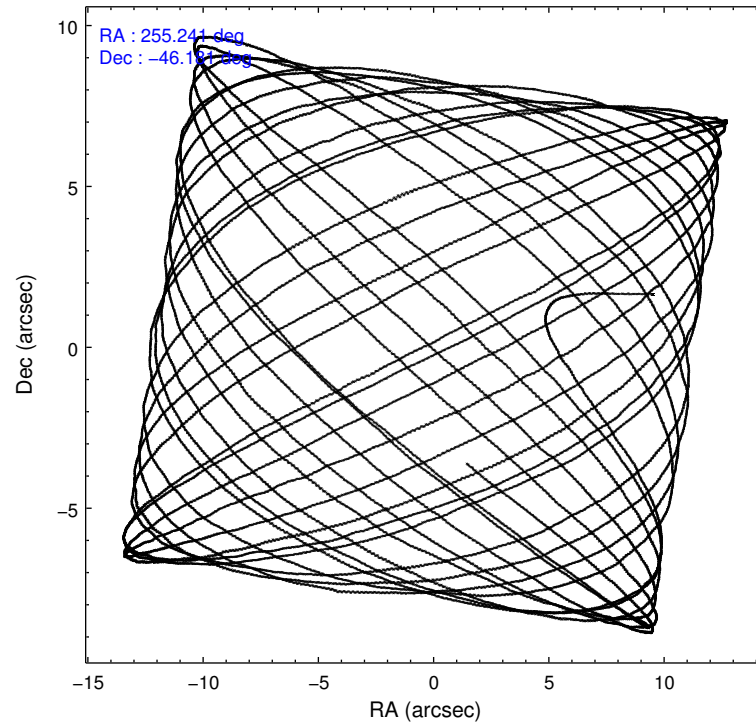
	ccd 2	ccd 3	ccd 5	ccd 6	ccd 7
level 1 events	120181	108383	166280	116497	133274
rejected events	108430	97461	82945	103810	72762
rejected %	90%	89%	49%	89%	54%

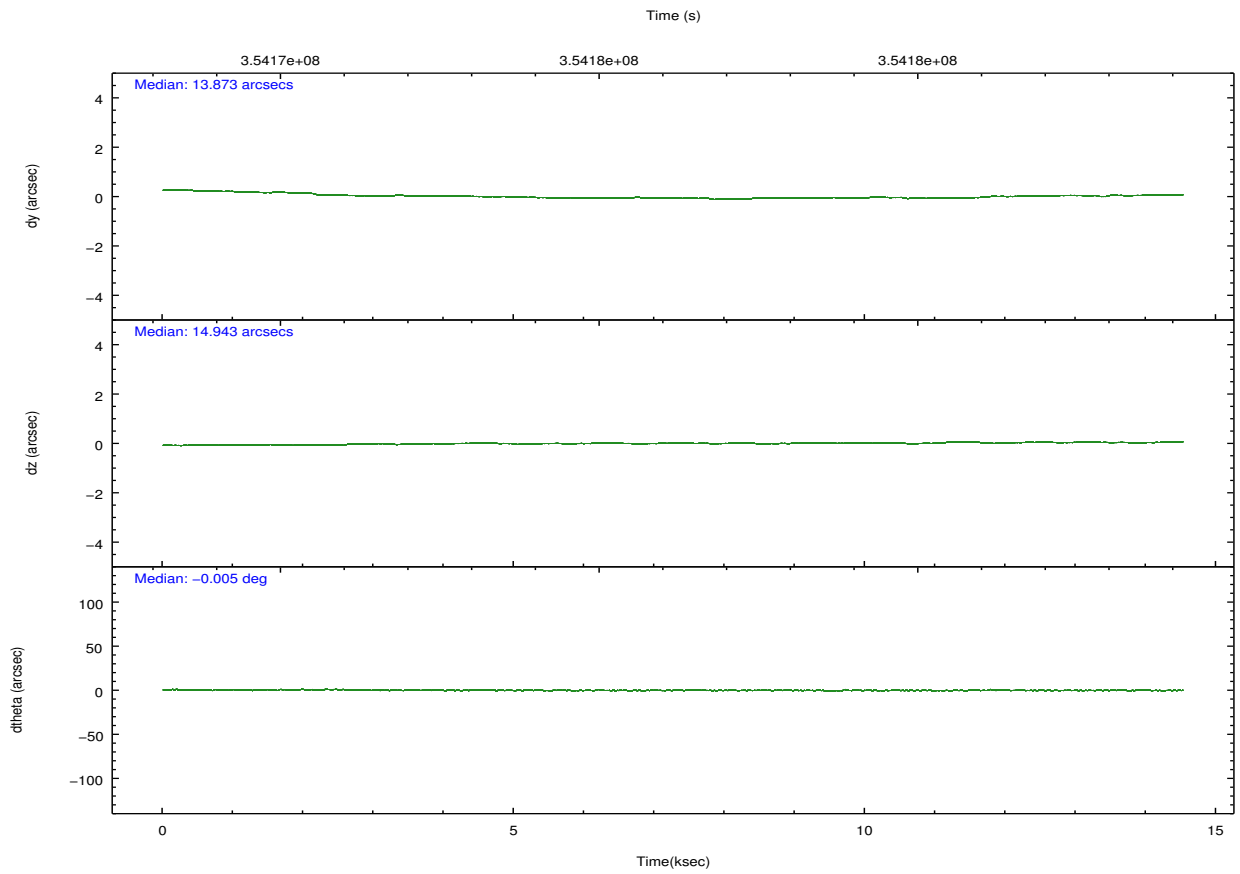
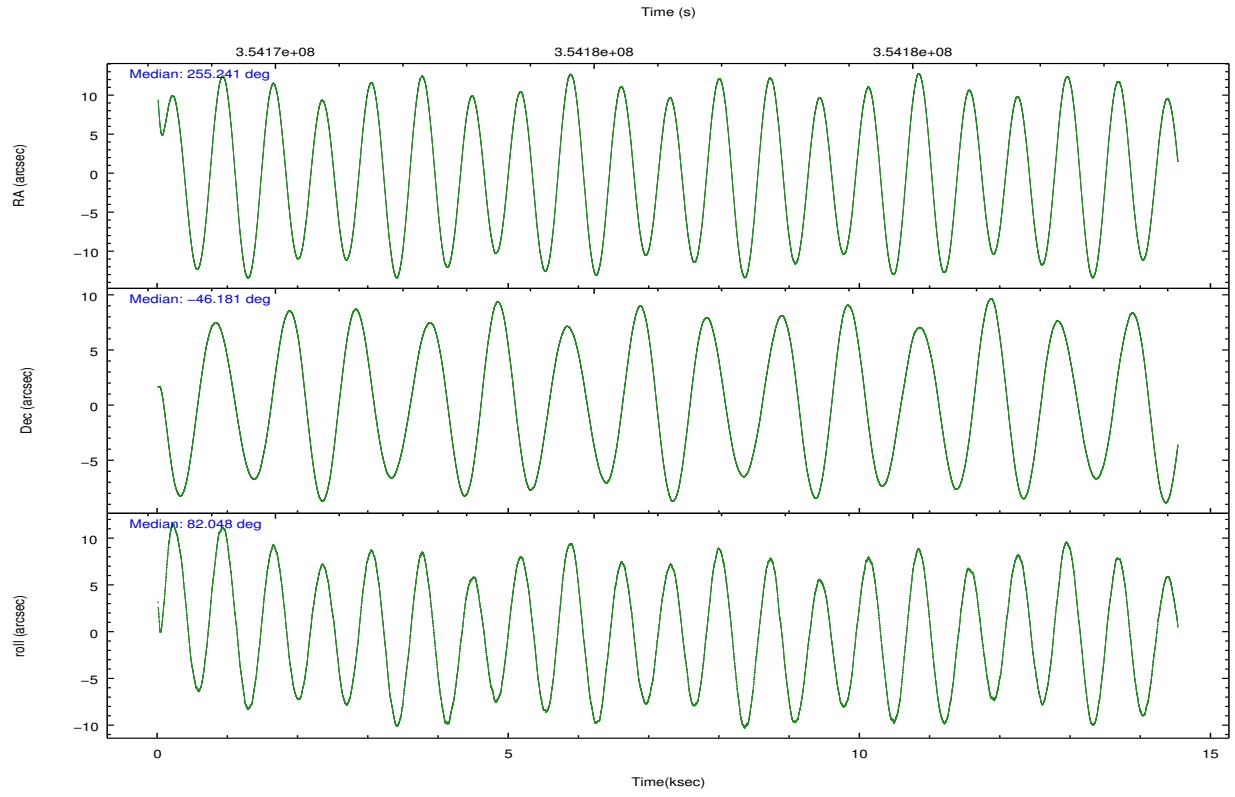
	ccd 2	ccd 3	ccd 5	ccd 6	ccd 7
grade 0 events	4337	3960	9797	4551	5777
	3%	3%	5%	3%	4%
grade 1 events	72	66	351	64	167
	0%	0%	0%	0%	0%
grade 2 events	2825	2344	24672	2777	12532
	2%	2%	14%	2%	9%
grade 3 events	1241	1179	3301	1313	5425
	1%	1%	1%	1%	4%
grade 4 events	1220	1191	3251	1287	5396
	1%	1%	1%	1%	4%
grade 5 events	3970	4680	12916	4790	13899
	3%	4%	7%	4%	10%
grade 6 events	2131	2251	42335	2762	31391
	1%	2%	25%	2%	23%
grade 7 events	104385	92712	69657	98953	58687
	86%	85%	41%	84%	44%

2.2 Compared Parameters

Parameter	Planned	Actual	Parameter	Planned	Actual
Instrument	ACIS	ACIS	Obspar format version number	7	7
Detector	ACIS-23567	ACIS-23567	Obspar file type	PREDICTED	ACTUAL
Grating	NONE	NONE	Obspar update status	NONE	UPDATED
Data mode	VFAINT	VFAINT	Number of optional ACIS chips dropped	0	0
Observation mode	POINTING	POINTING	On-chip summing requested	N	N
[deg] Pointing RA	255.256255	255.2409732940953	Subarray requested	NONE	NONE
[deg] Pointing Dec	-46.206484	-46.18133313838153	Alternating exposures requested	N	N
[deg] Pointing Roll	81.909033	82.05462645754574	[s] Primary exposure time	0.000000	3.1
[s] Window start time (MET)	354110466.184000	354110466.184000			
[s] Window stop time (MET)	354801666.184000	354801666.184000			
[mm] SIM focus pos	-0.684267	-0.6828225247311905			
[mm] SIM defocus	0	0.001444936568705701			
[mm] SIM translation stage pos	-190.132523	-190.1400660498719			
[mm] SIM translation stage offset	0	0.00754346686406393			
[s] Observation start time (MET)	354170032.184000	354168134.98285			
Observation start date	2009-03-23T04:32:46	2009-03-23T04:02:14			
[s] Observation end time (MET)	354183432.184000	354184249.52115			
Observation end date	2009-03-23T08:16:06	2009-03-23T08:30:49			
Read mode	TIMED	TIMED			

2.3 Aspect



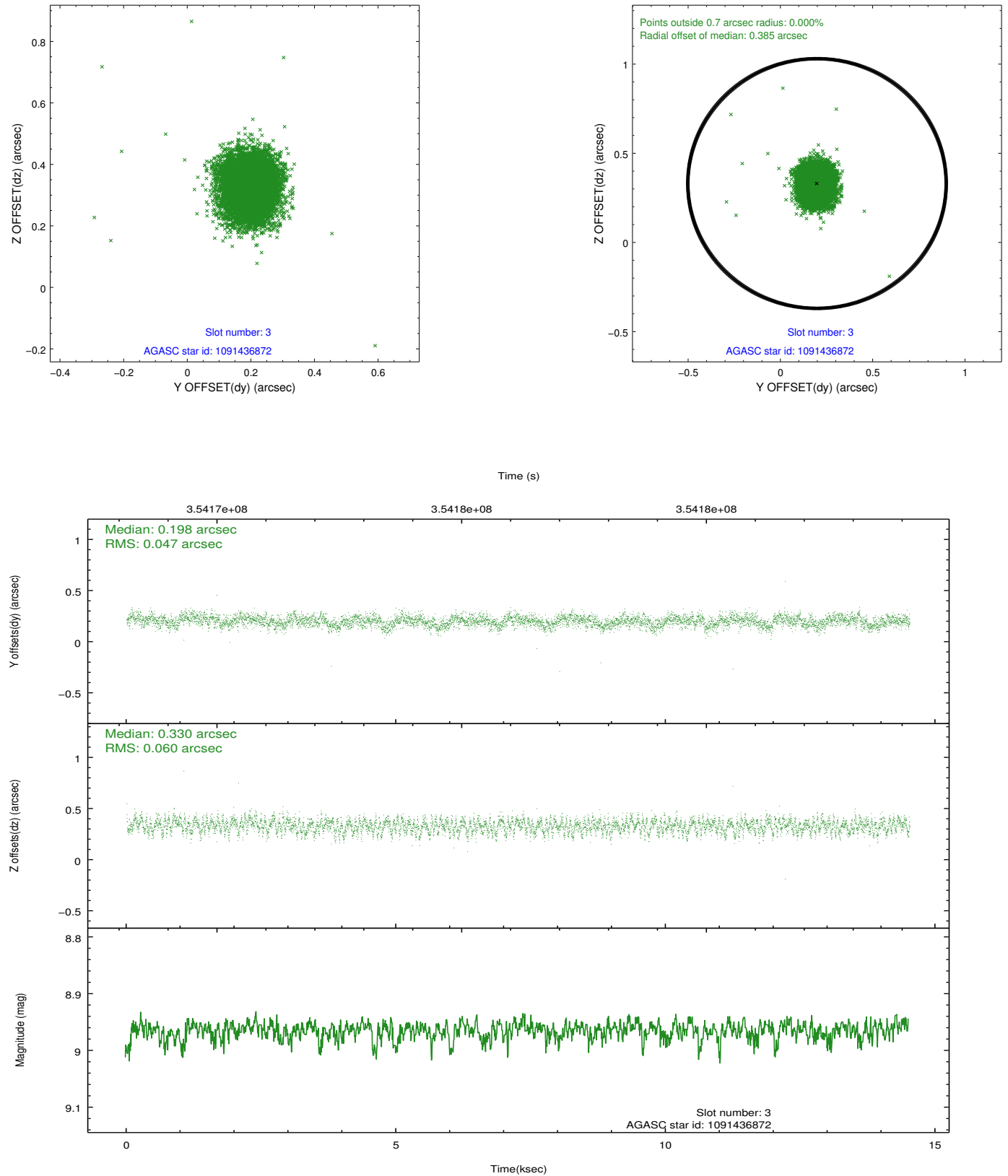


Slot Statistics

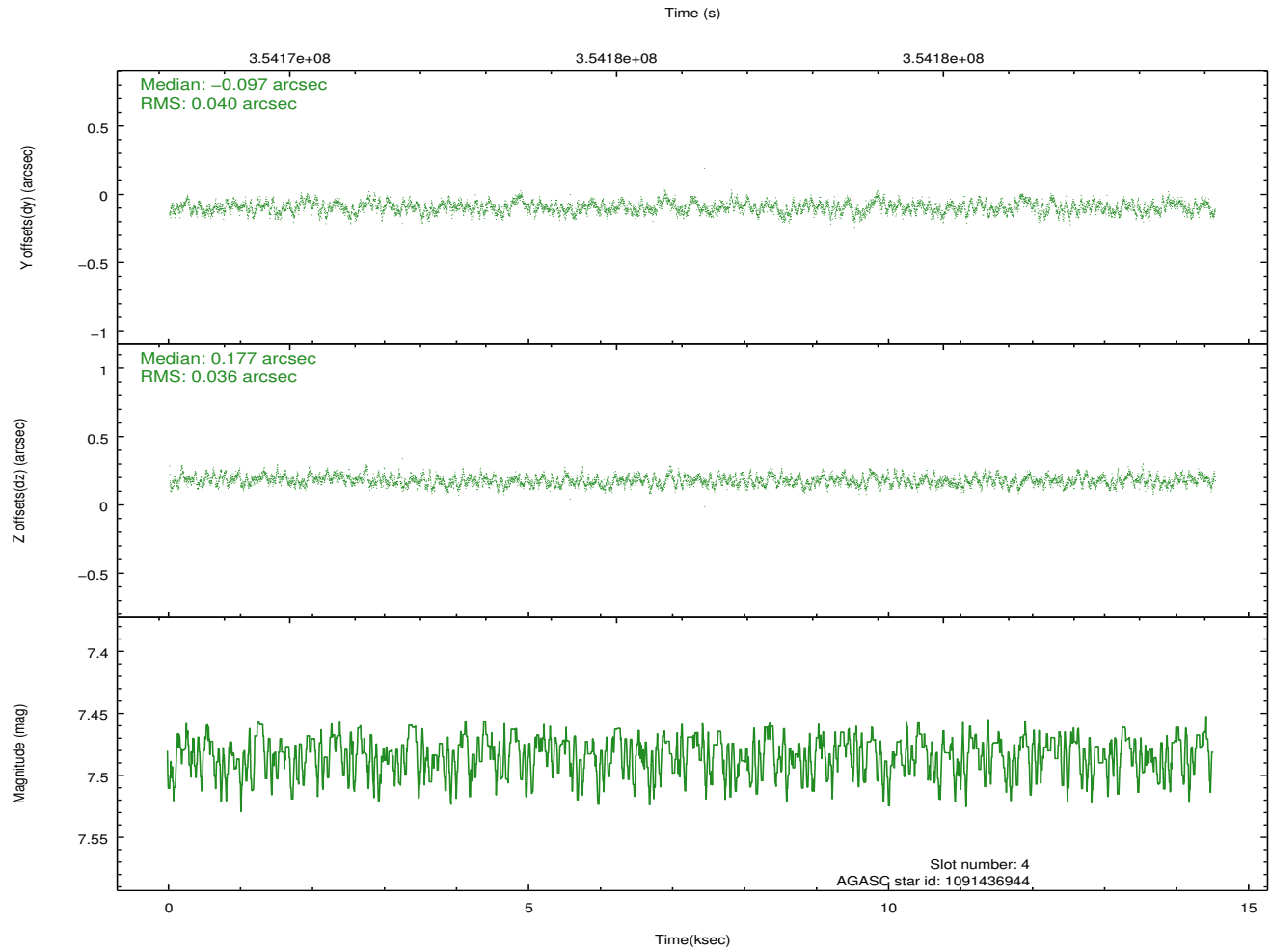
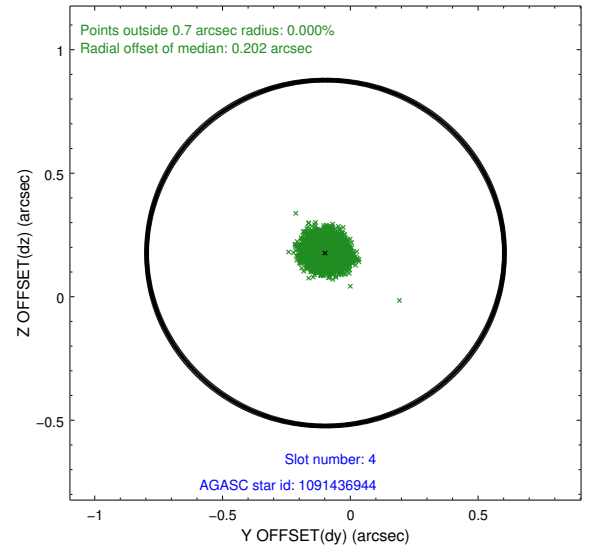
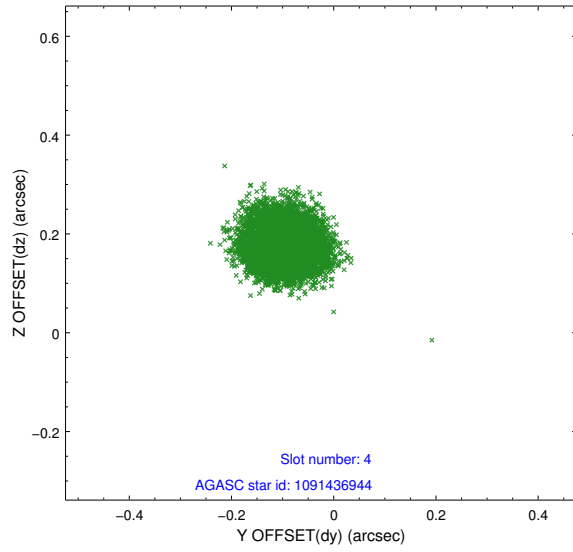
slot	status	id	mag	n_pts	med_dy	med_dz	dr1	dr2	ra	dec	mean_y	mean_z
0	FID	ACIS-S-2	6.89	3541	-0.071	-0.028	0.008	0.013	0.000000	0.000000	-766.88	-1736.35
1	FID	ACIS-S-4	6.96	3542	0.204	0.042	0.007	0.014	0.000000	0.000000	2146.51	171.90
2	FID	ACIS-S-5	6.99	3540	-0.165	-0.005	0.009	0.015	0.000000	0.000000	-1819.43	165.84
3	GUIDE	1091436872	8.96	7082	0.198	0.330	0.079	0.127	255.728542	-46.511740	-926.09	-1313.20
4	GUIDE	1091436944	7.48	7084	-0.097	0.177	0.057	0.089	255.747540	-46.187588	236.17	-1202.96
5	GUIDE	1091443112	7.91	7084	-0.200	-0.153	0.063	0.098	254.637652	-45.920353	795.80	1677.89
6	GUIDE	1091443144	8.22	7080	-0.163	-0.290	0.064	0.102	254.556494	-45.731344	1438.44	1980.91
7	GUIDE	1091440000	8.98	7080	0.264	-0.062	0.081	0.128	254.971678	-46.695128	-1841.01	448.14

2.4 Star Slots

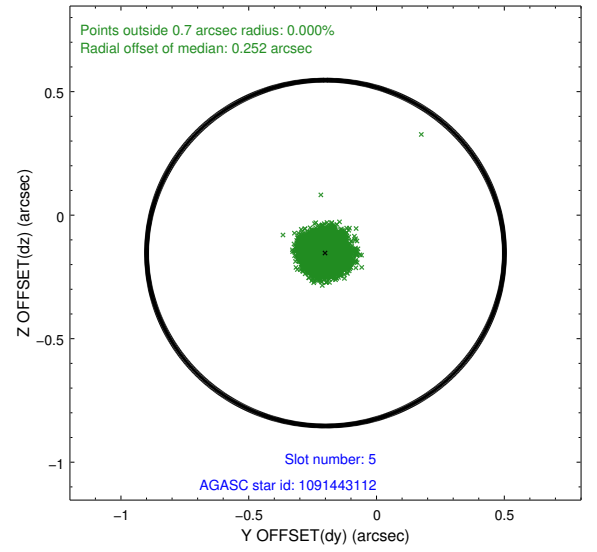
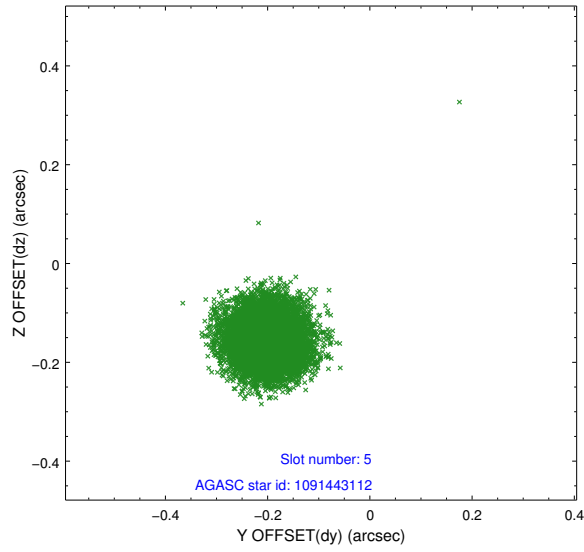
2.4.1 Slot 3



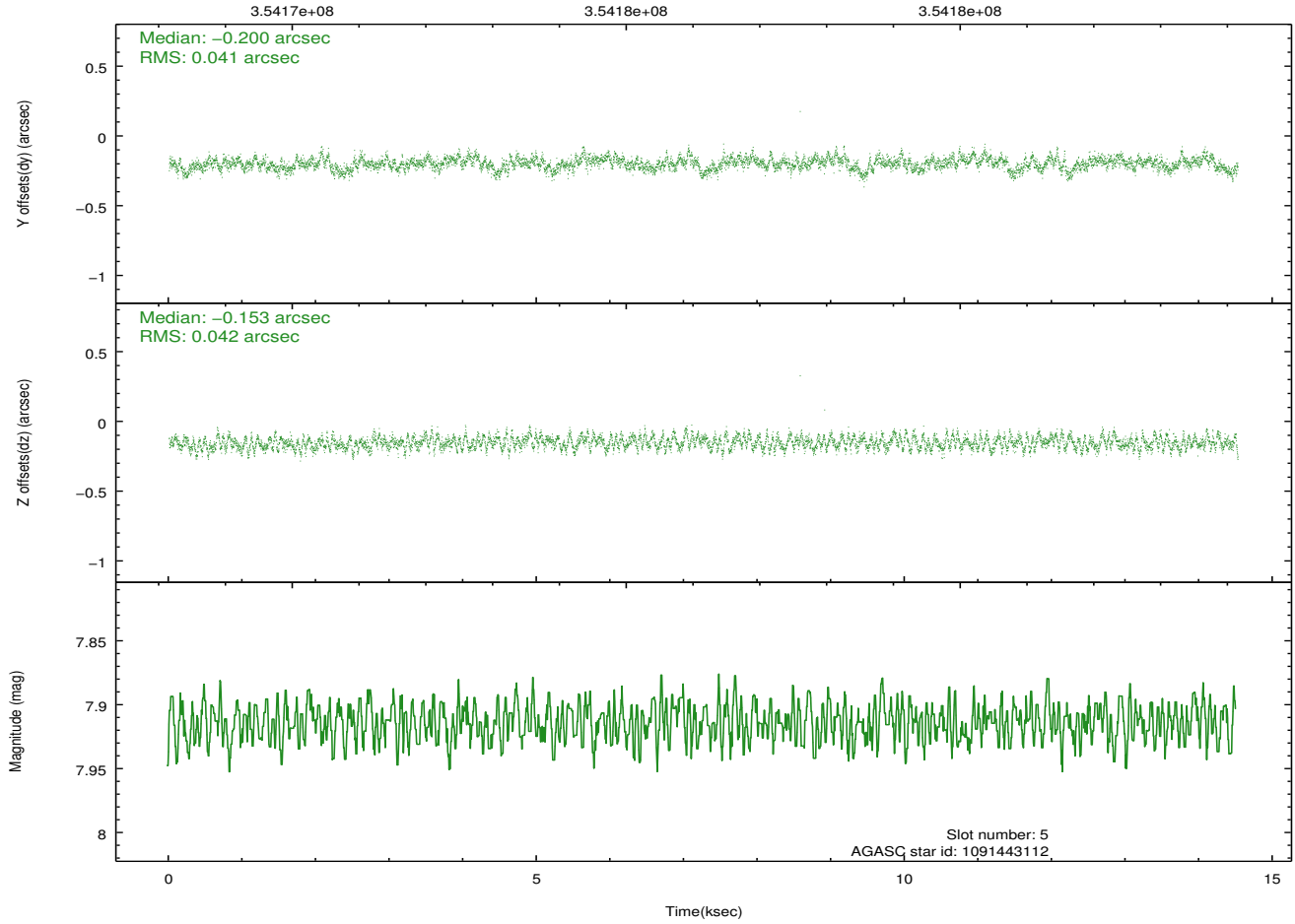
2.4.2 Slot 4



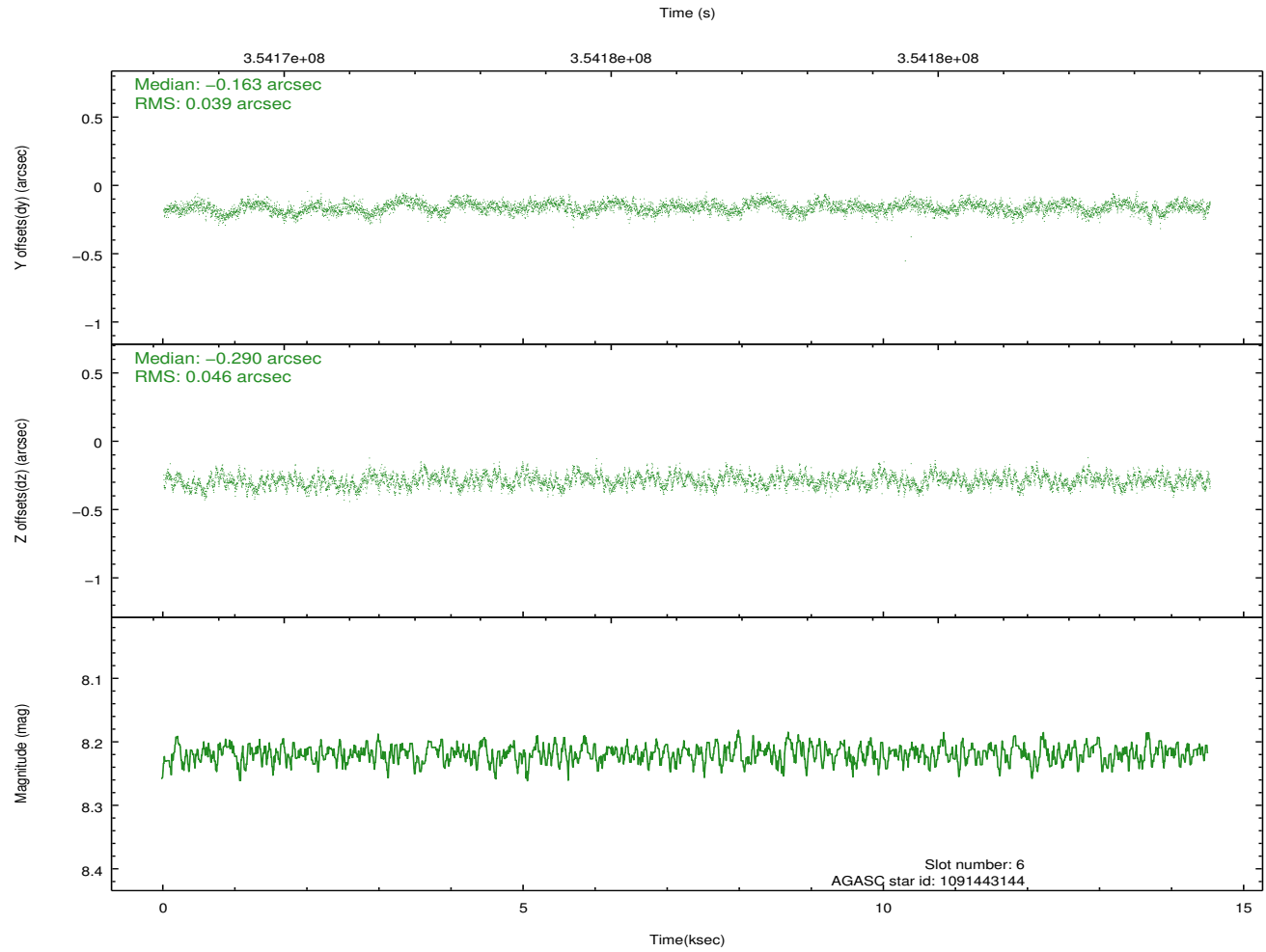
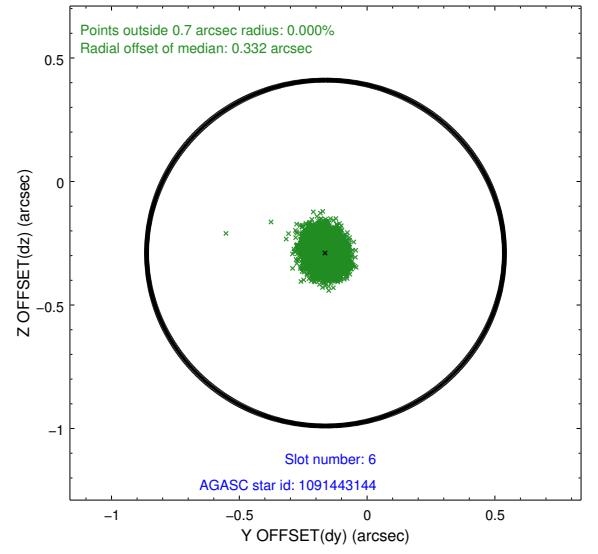
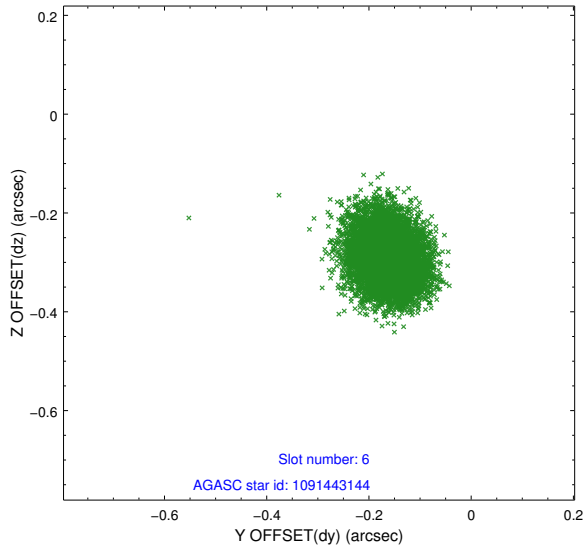
2.4.3 Slot 5



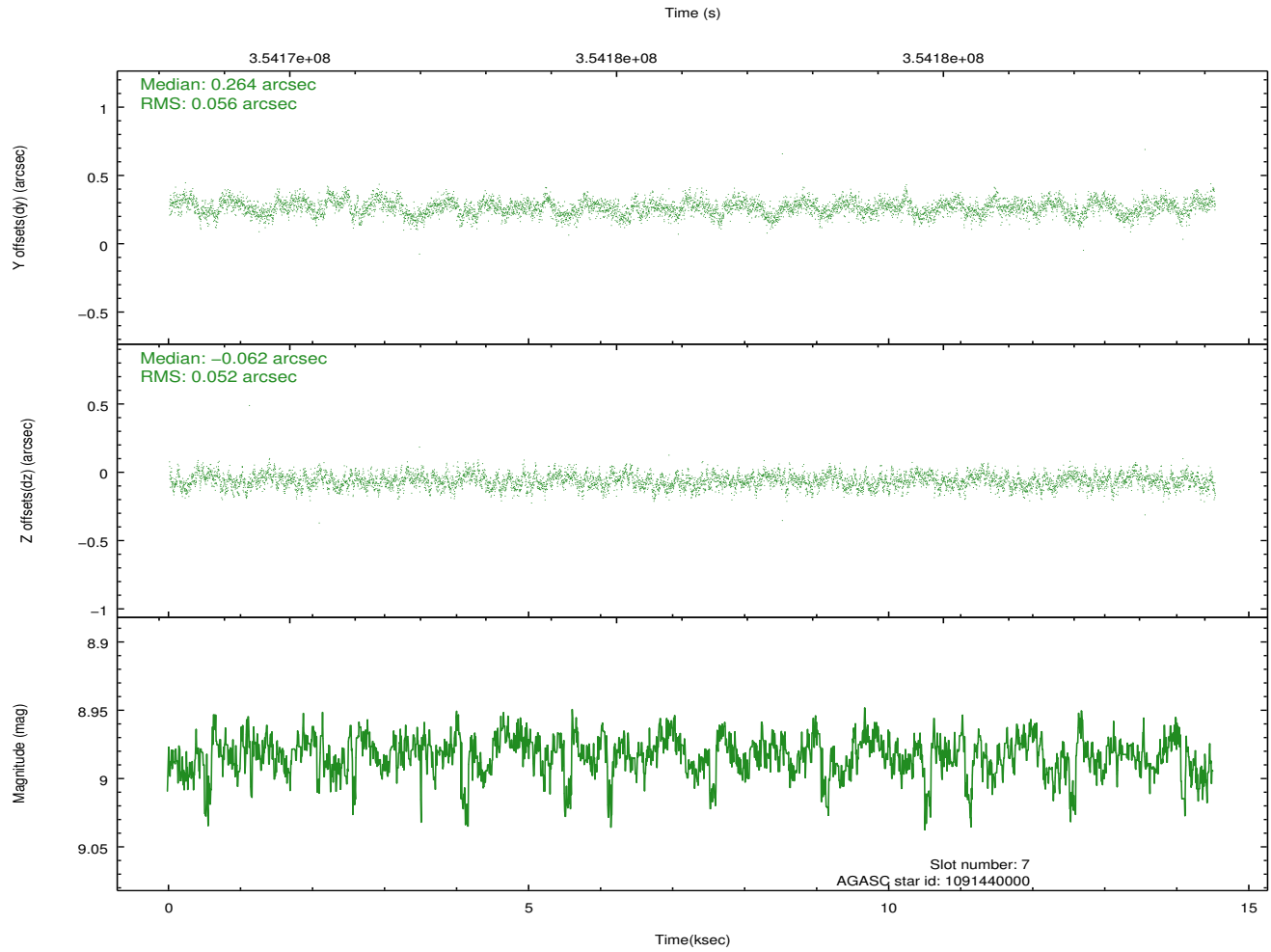
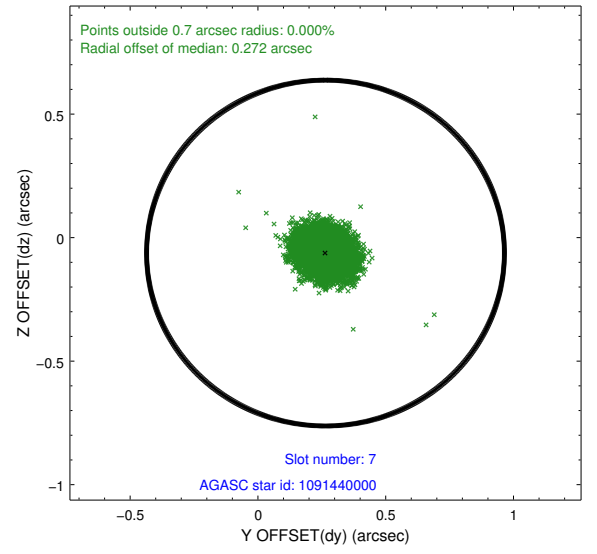
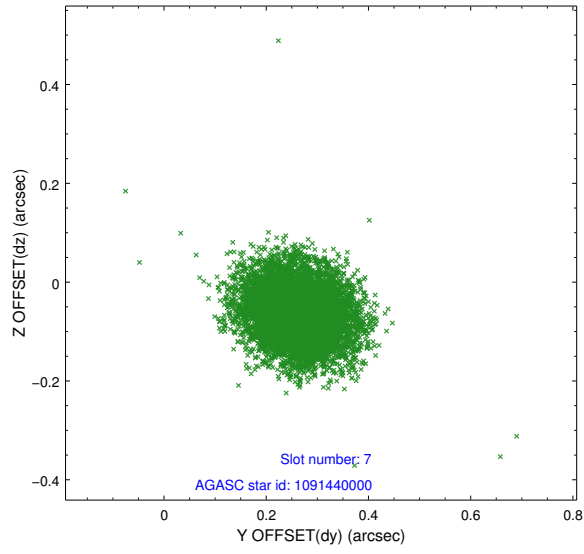
Time (s)



2.4.4 Slot 6

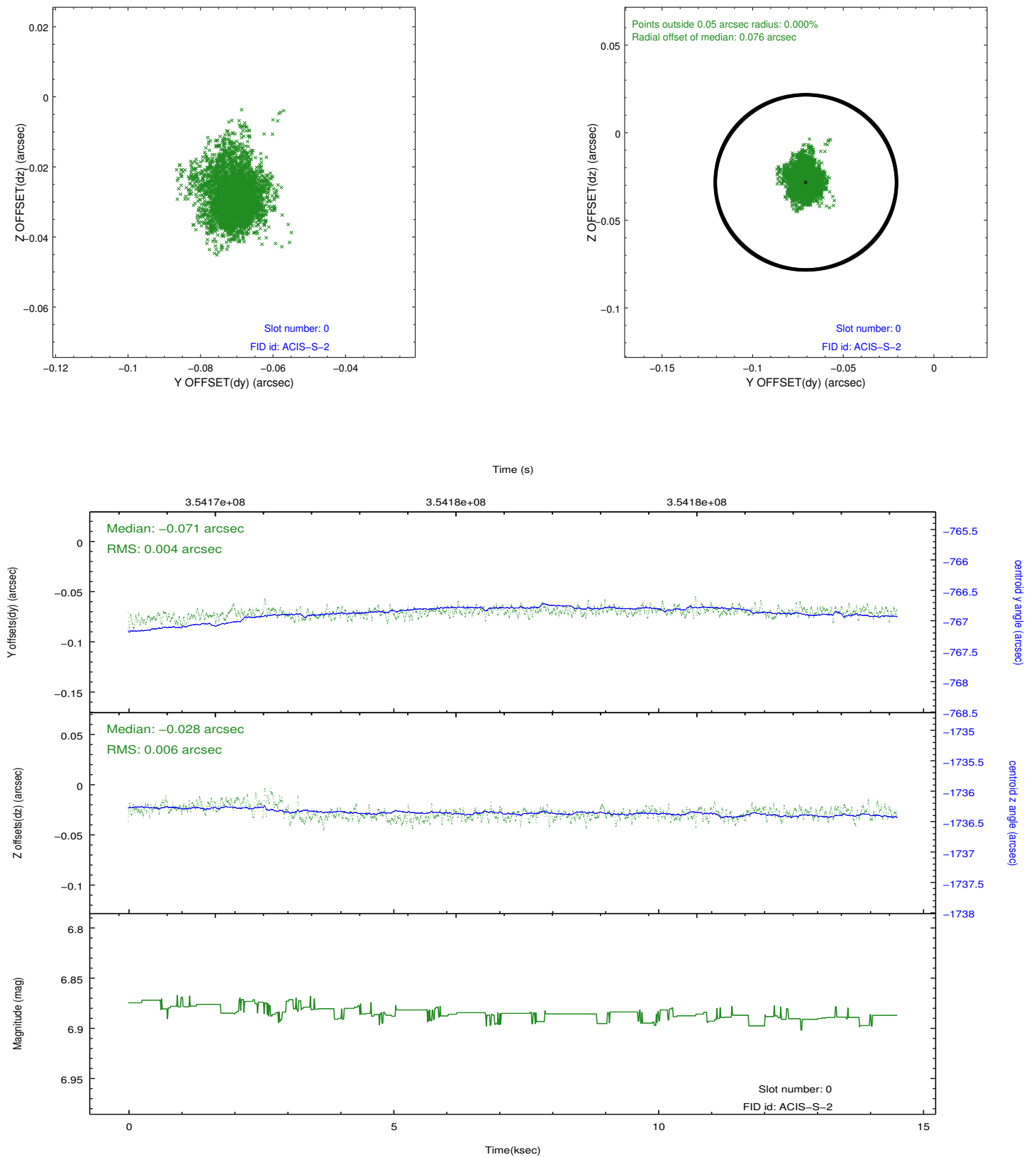


2.4.5 Slot 7

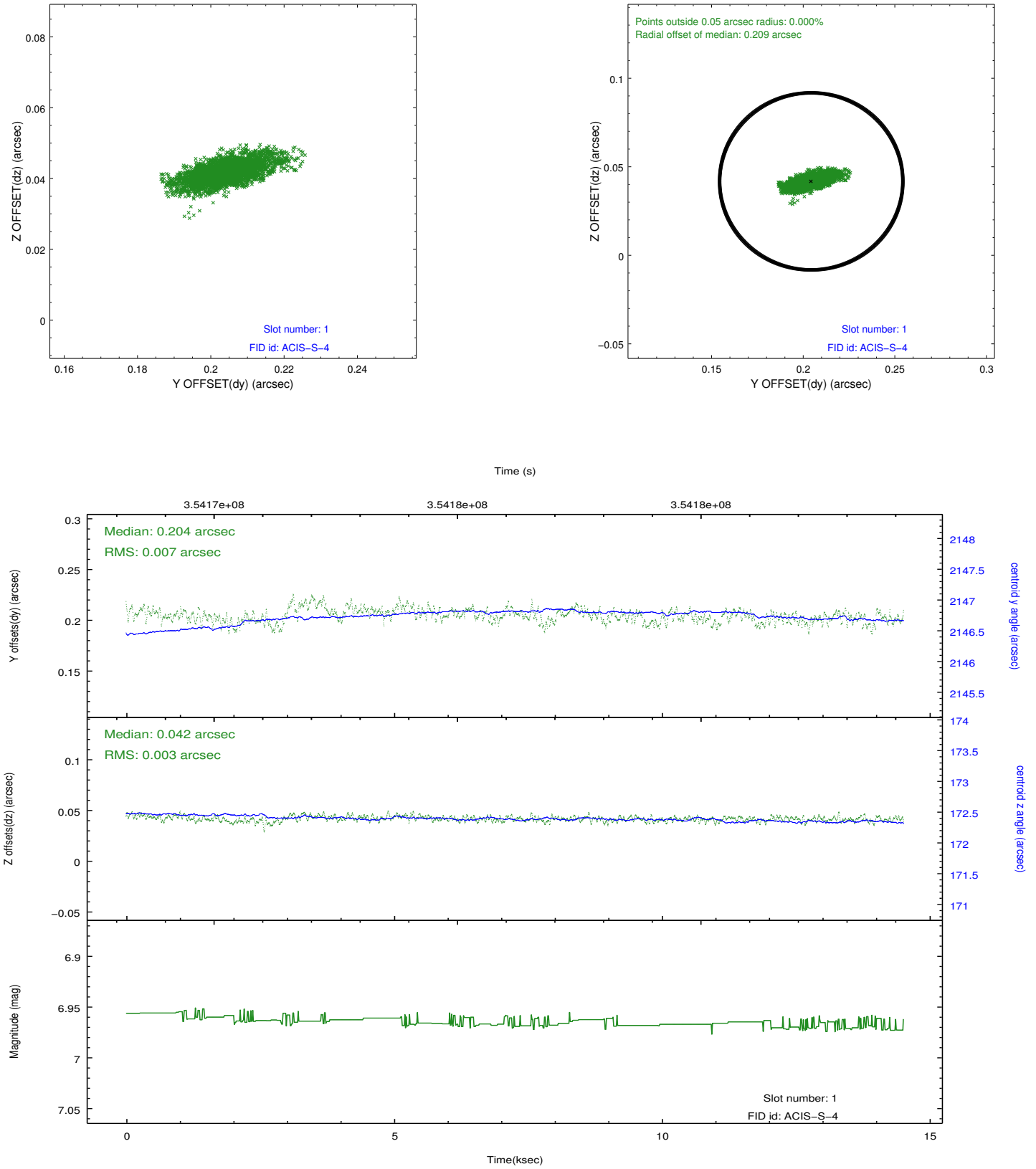


2.5 FID Slots

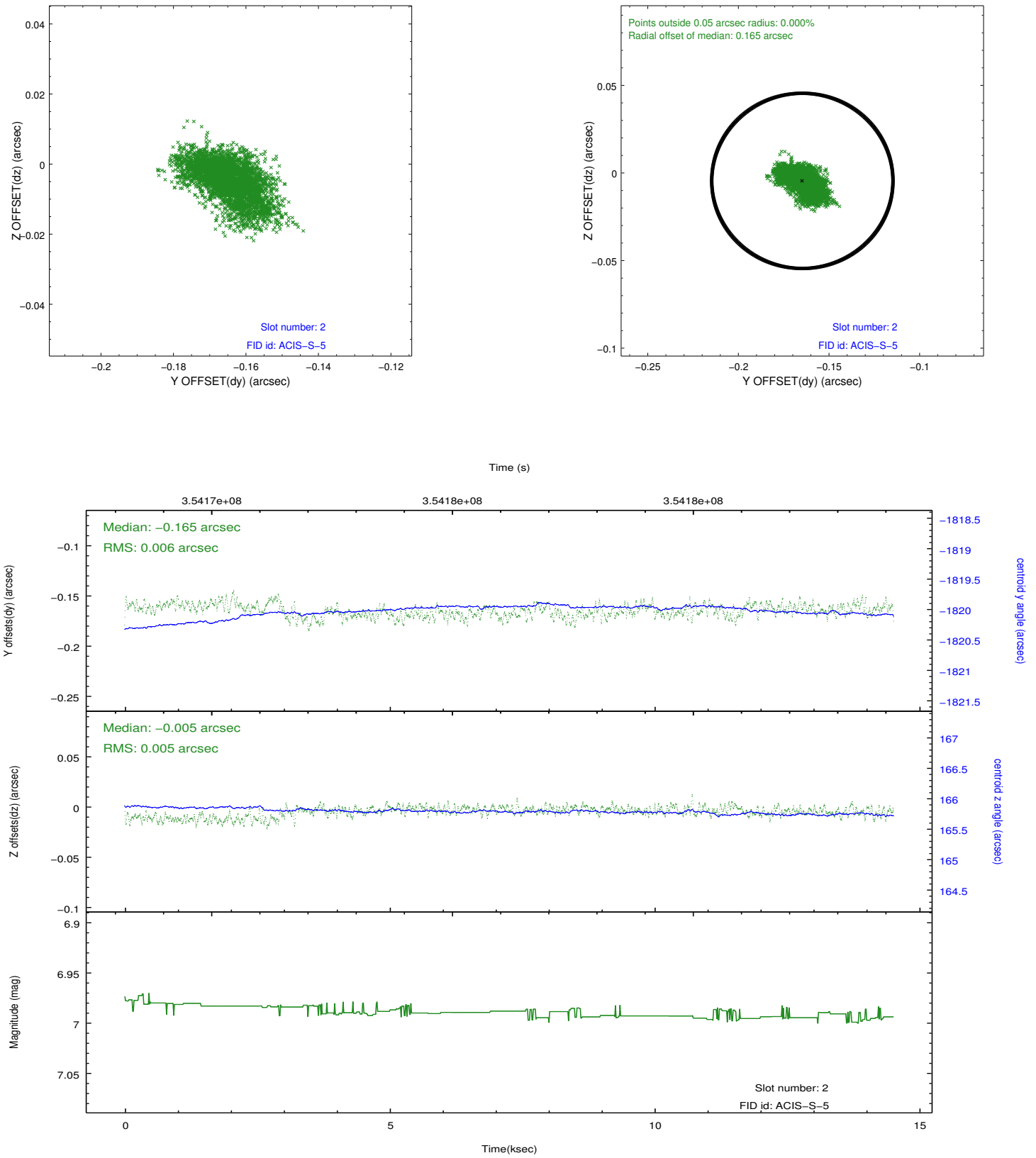
2.5.1 Slot 0



2.5.2 Slot 1



2.5.3 Slot 2



A Summary

A.1 Status

V&V Scientist	Jen Lauer
V&V Date (YYYY-MM-DD)	2012.06.07
V&V Edition	1
V&V Disposition and Status	OK
V&V Charge Time	13.4354001

A.2 Comments

Window constraint met.