

V&V Reference Report

L2 ASCDS Version : 8.4.4

Observation 10036 - L2 Version 2
Chandra X-Ray Center

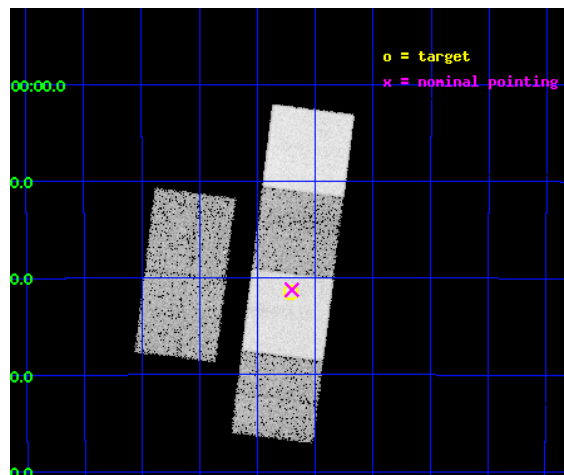
L2 Processing Date : Jun 1 2012

Contents

1	Front	2
2	OBI	3
2.1	OBI	3
2.1.1	Images	3
2.1.2	Bias	3
2.1.3	Parameters	4
2.1.4	Events	4
2.2	Compared Parameters	5
2.3	Aspect	6
2.4	Star Slots	9
2.4.1	Slot 3	9
2.4.2	Slot 4	10
2.4.3	Slot 5	11
2.4.4	Slot 6	12
2.4.5	Slot 7	13
2.5	FID Slots	14
2.5.1	Slot 0	14
2.5.2	Slot 1	15
2.5.3	Slot 2	16
A	Summary	17
A.1	Status	17
A.2	Comments	17

1 Front

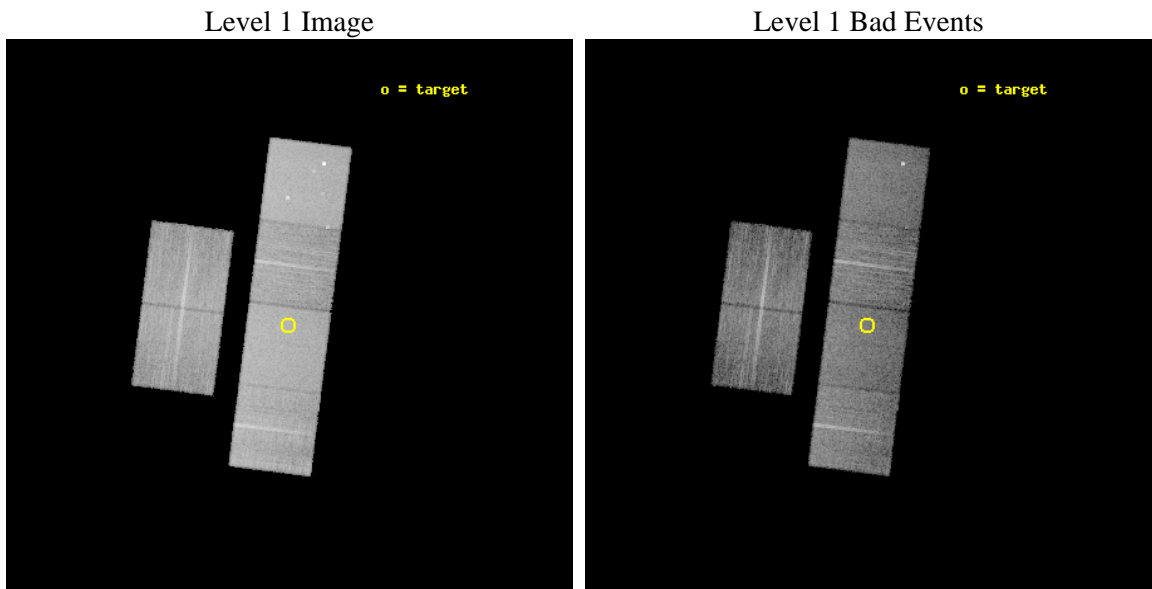
seq_num	401000	Sequence number
obs_id	10036	Observation id
title	Chandra observations of newly discovered, nearby, globular clusters in the Galaxy	Proposal title
observer	Dr Edward Cackett	Principal investigator
object	FSR 1767	Source name
dtcycle	0	
cycle	P	events from which exps? Prim/Second/Both
ra_targ	263.929167	Observer's specified target RA [deg]
dec_targ	-36.357778	Observer's specified target Dec [deg]
ra_nom	263.925414213	Nominal RA [deg]
dec_nom	-36.354025378293	Nominal Dec [deg]
roll_nom	97.229540450535	Nominal Roll [deg]
revision	2	Processing version of data
ontime	9756.7999637127	Sum of GTIs [s]
livetime	9633.2534877325	Livetime [s]
ontime2	9753.5589934587	Sum of GTIs [s]
ontime3	9756.7999637127	Sum of GTIs [s]
ontime5	9756.7999637127	Sum of GTIs [s]
ontime6	9756.7999637127	Sum of GTIs [s]
ontime7	9756.7999637127	Sum of GTIs [s]
ontime8	9753.5590034127	Sum of GTIs [s]
l2events	171496	Number of level 2 events



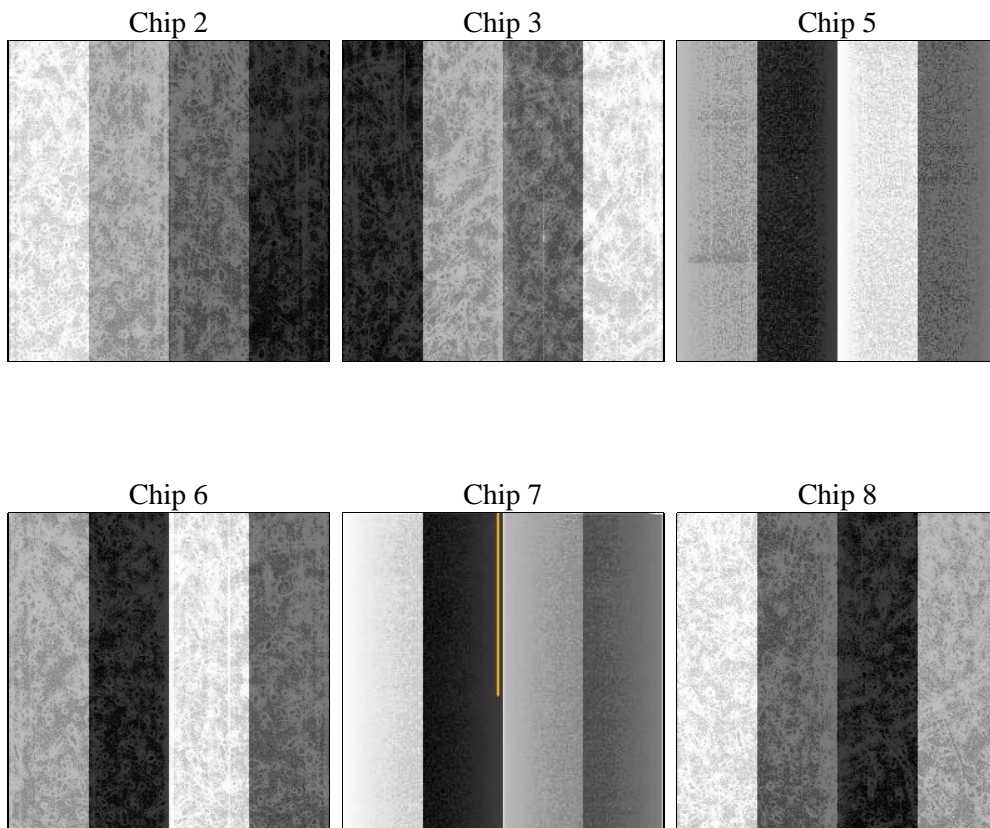
2 OBI

2.1 OBI

2.1.1 Images



2.1.2 Bias



2.1.3 Parameters

obi_num	0	Obi number	sched_exp_time	10000.000000	[s] Scheduled observation exposure time
ascdsver	8.4.4	Processing system revision	ontime	9756.7999637127	Sum of GTIs [s]
caldsver	4.4.9	 	ontime2	9753.5589934587	Sum of GTIs [s]
date	2012-06-01T08:07:24	Date and time of file creation	ontime3	9756.7999637127	Sum of GTIs [s]
revision	2	Processing version of data	ontime5	9756.7999637127	Sum of GTIs [s]
			ontime6	9756.7999637127	Sum of GTIs [s]
			ontime7	9756.7999637127	Sum of GTIs [s]
			ontime8	9753.5590034127	Sum of GTIs [s]
			l1events	730872	Number of level 1 events

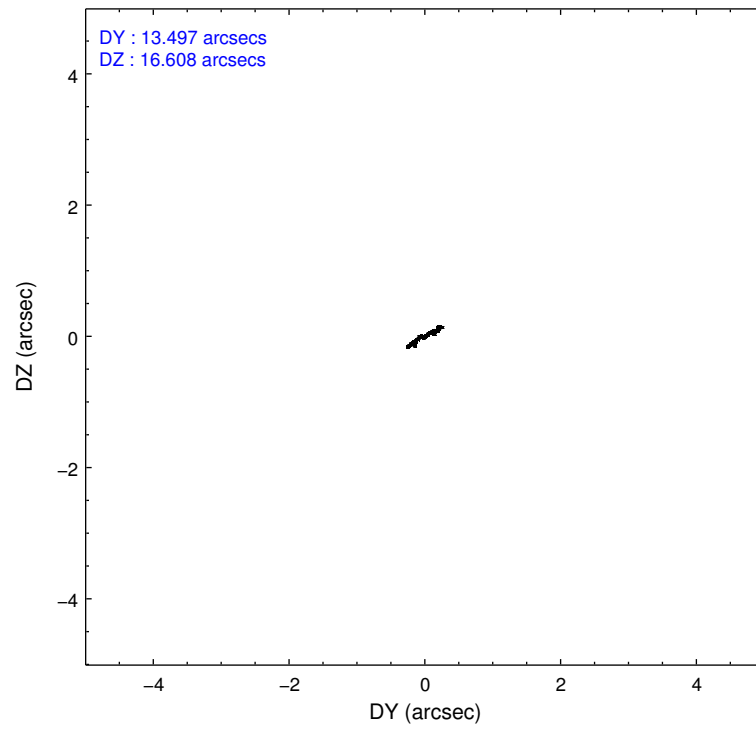
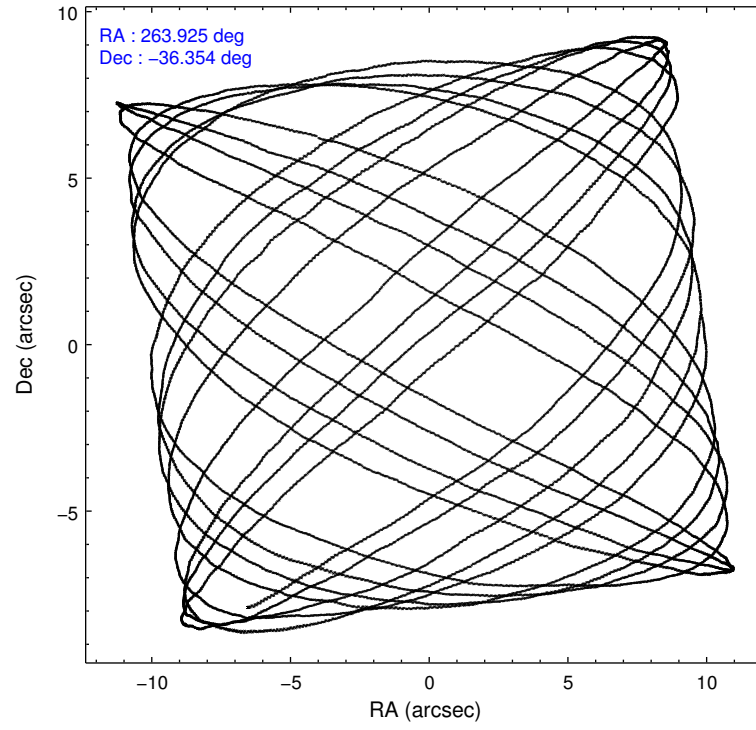
2.1.4 Events

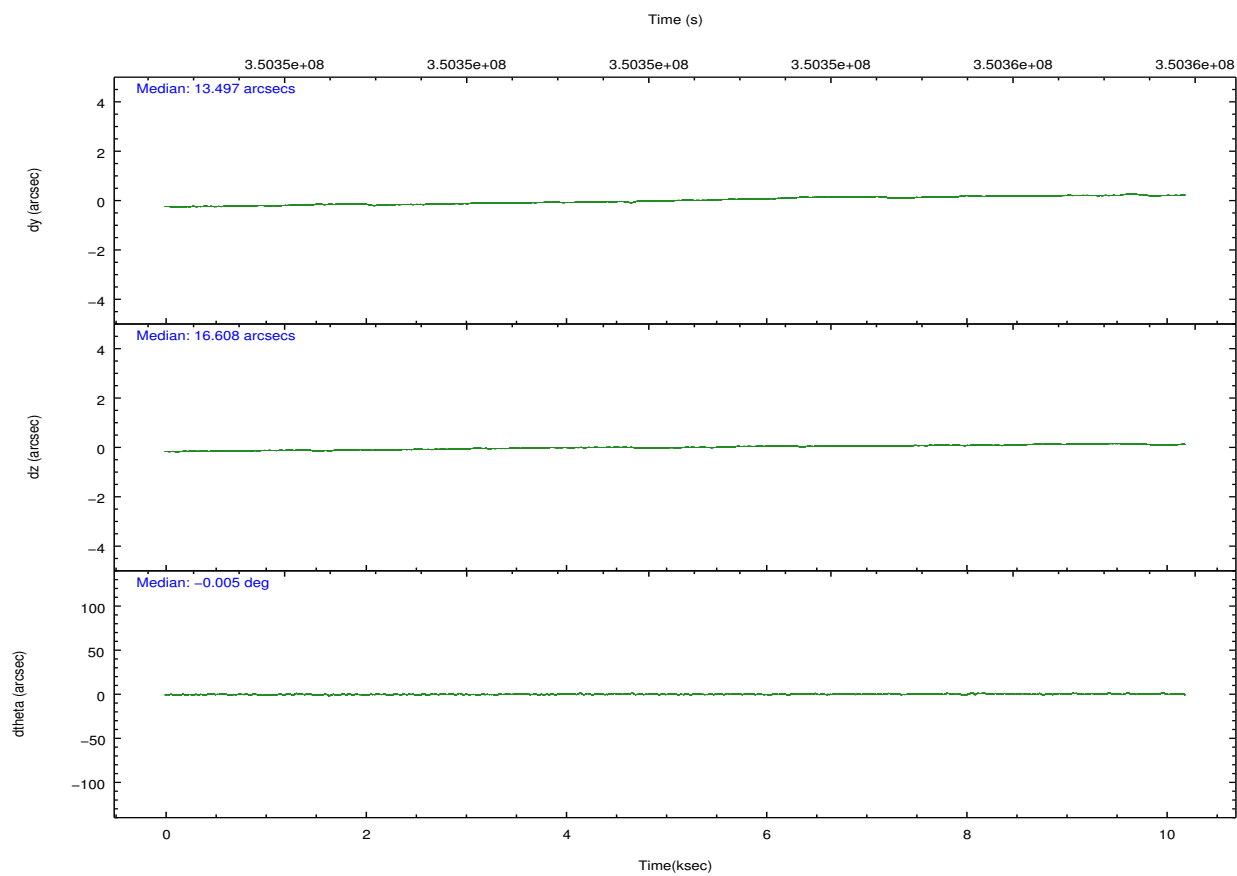
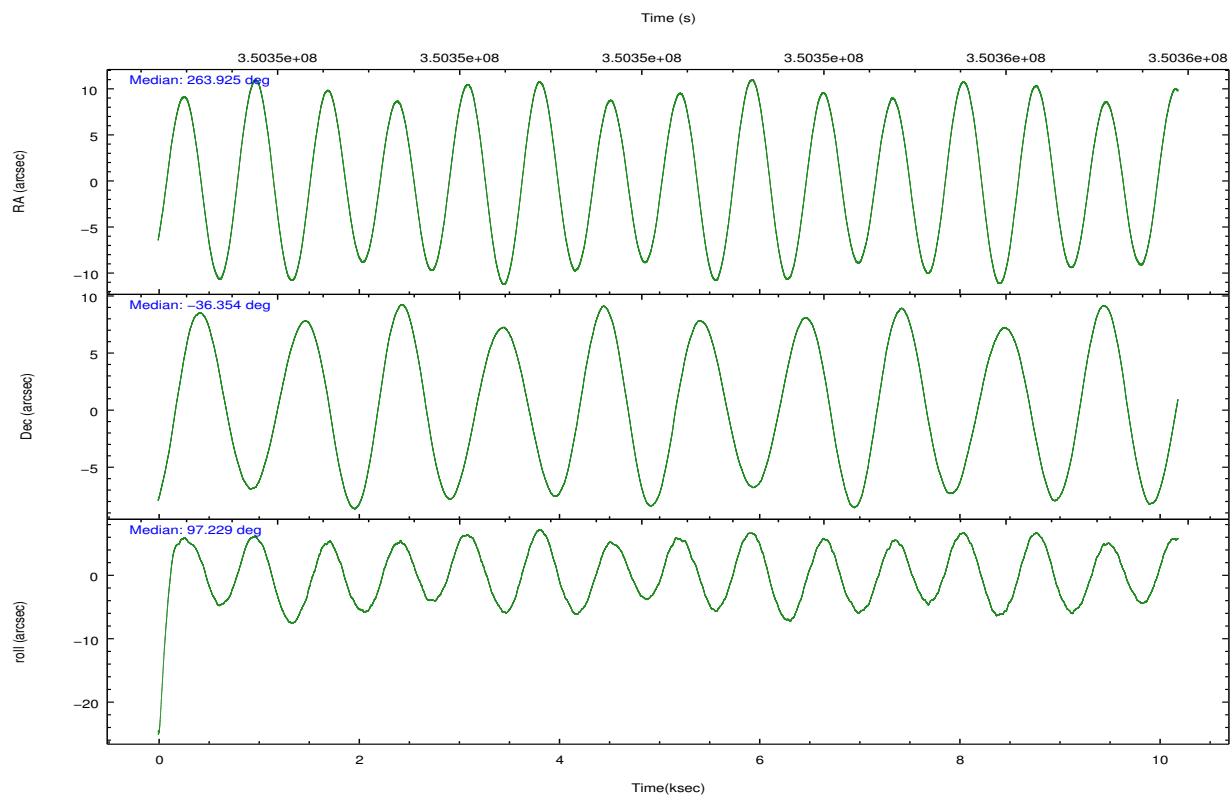
	ccd 2	ccd 3	ccd 5	ccd 6	ccd 7	ccd 8		ccd 2	ccd 3	ccd 5	ccd 6	ccd 7	ccd 8
level 1 events	99856	96657	158470	103244	140688	131957	grade 0 events	5605	5586	7594	5194	5172	9310
rejected events	87403	84139	84800	90527	81506	101887		5%	5%	4%	5%	3%	7%
rejected %	87%	87%	53%	87%	57%	77%	grade 1 events	70	66	1519	61	161	97
								0%	0%	0%	0%	0%	0%
							grade 2 events	2619	2443	22219	2768	12290	7081
								2%	2%	14%	2%	8%	5%
							grade 3 events	1060	1191	2678	1128	4838	2984
								1%	1%	1%	1%	3%	2%
							grade 4 events	1106	1146	2582	1073	4816	2753
								1%	1%	1%	1%	3%	2%
							grade 5 events	3998	4677	11099	4898	13096	6444
								4%	4%	7%	4%	9%	4%
							grade 6 events	2067	2155	38620	2558	32081	7950
								2%	2%	24%	2%	22%	6%
							grade 7 events	83331	79393	72159	85564	68234	95338
								83%	82%	45%	82%	48%	72%

2.2 Compared Parameters

Parameter	Planned	Actual	Parameter	Planned	Actual
Instrument	ACIS	ACIS	Obspar format version number	7	7
Detector	ACIS-235678	ACIS-235678	Obspar file type	PREDICTED	ACTUAL
Grating	NONE	NONE	Obspar update status	NONE	UPDATED
Data mode	FAINT	FAINT	CCD I0 on	N	N
Observation mode	POINTING	POINTING	CCD I1 on	N	N
[deg] Pointing RA	263.946297	263.9254142129994	CCD I2 on	O1	Y
[deg] Pointing Dec	-36.375543	-36.35402537829304	CCD I3 on	O2	Y
[deg] Pointing Roll	97.085300	97.22954045053476	CCD S0 on	N	N
[mm] SIM focus pos	-0.684267	-0.6828225247311905	CCD S1 on	Y	Y
[mm] SIM defocus	0	0.001444936568705701	CCD S2 on	Y	Y
[mm] SIM translation stage pos	-190.132523	-190.1425803651734	CCD S3 on	Y	Y
[mm] SIM translation stage offset	0	0.01005778216563158	CCD S4 on	Y	Y
[s] Observation start time (MET)	350347377.184000	350346953.75569	CCD S5 on	N	N
Observation start date	2009-02-06T22:41:51	2009-02-06T22:35:53	Number of optional ACIS chips dropped	0	0
[s] Observation end time (MET)	350357377.184000	350358408.64376	On-chip summing requested	N	N
Observation end date	2009-02-07T01:28:31	2009-02-07T01:46:48	Subarray requested	NONE	NONE
Read mode	TIMED	TIMED	Alternating exposures requested	N	N
			[s] Primary exposure time	0.000000	3.2

2.3 Aspect



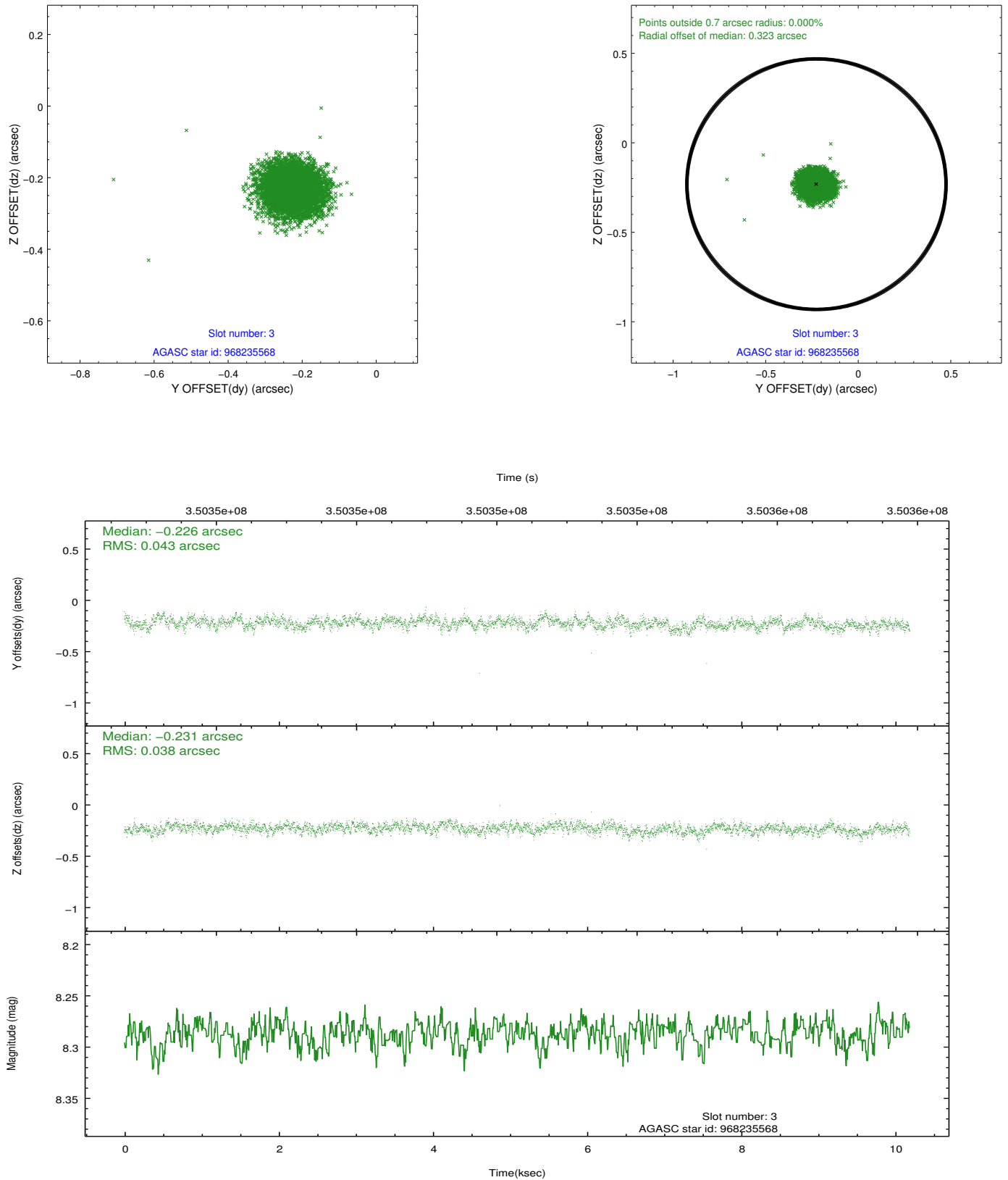


Slot Statistics

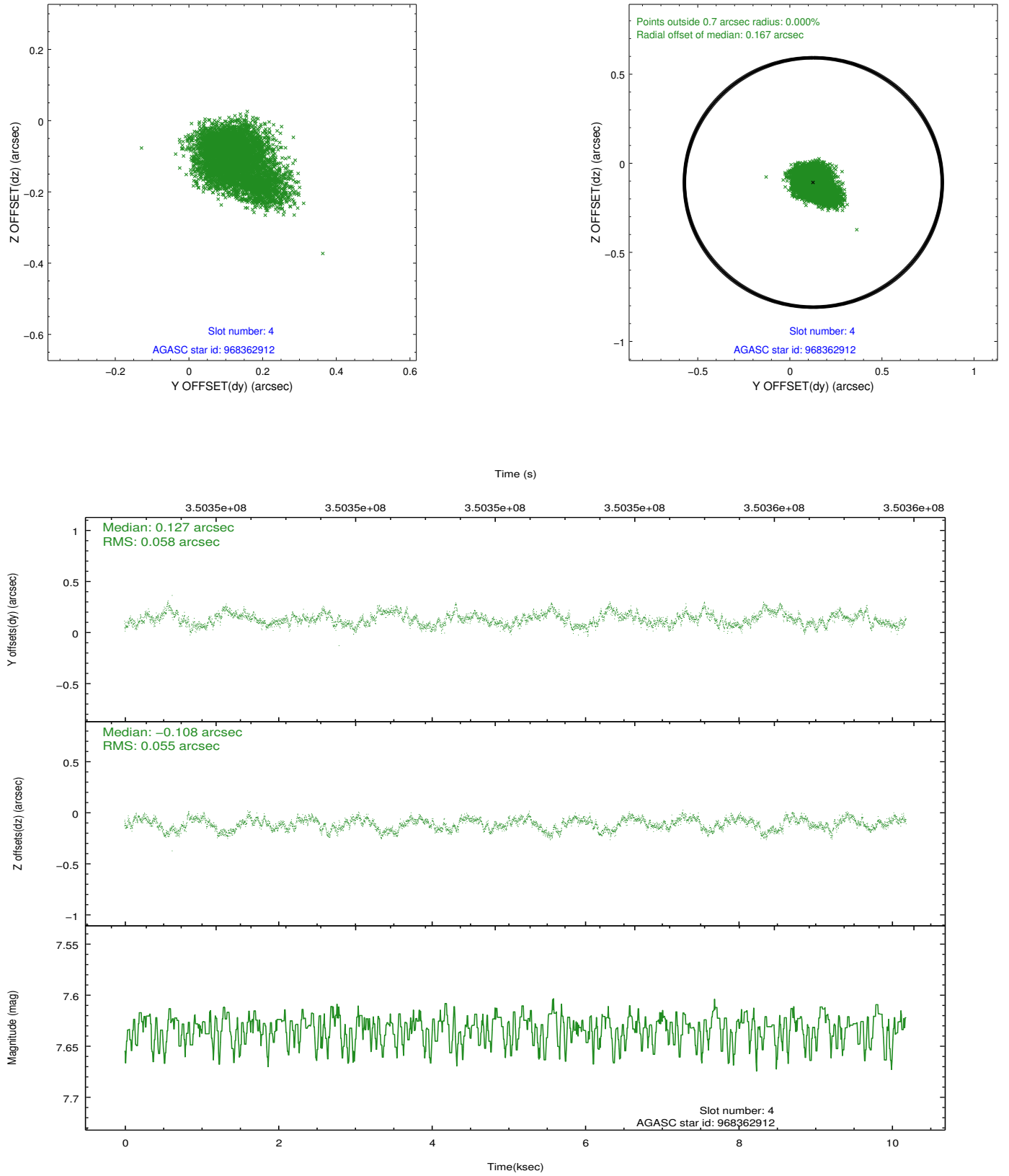
slot	status	id	mag	n_pts	med_dy	med_dz	dr1	dr2	ra	dec	mean_y	mean_z
0	FID	ACIS-S-1	6.97	2484	0.142	-0.092	0.008	0.013	0.000000	0.000000	929.73	-1733.71
1	FID	ACIS-S-2	6.89	2485	-0.033	0.025	0.007	0.011	0.000000	0.000000	-766.06	-1738.66
2	FID	ACIS-S-5	7.00	2485	-0.133	0.074	0.009	0.016	0.000000	0.000000	-1819.91	163.50
3	GUIDE	968235568	8.29	4969	-0.226	-0.231	0.061	0.097	263.154489	-35.959954	1759.77	2106.34
4	GUIDE	968362912	7.63	4970	0.127	-0.108	0.085	0.138	263.862035	-36.503622	-427.10	299.40
5	GUIDE	968368536	8.04	4971	0.194	0.290	0.113	0.170	264.200391	-36.533173	-654.63	-658.70
6	GUIDE	968367936	9.16	4967	0.107	0.006	0.138	0.248	263.385728	-37.081136	-2326.90	1911.80
7	GUIDE	968365416	7.95	4967	-0.209	0.031	0.061	0.098	263.559088	-35.733729	2429.57	838.89

2.4 Star Slots

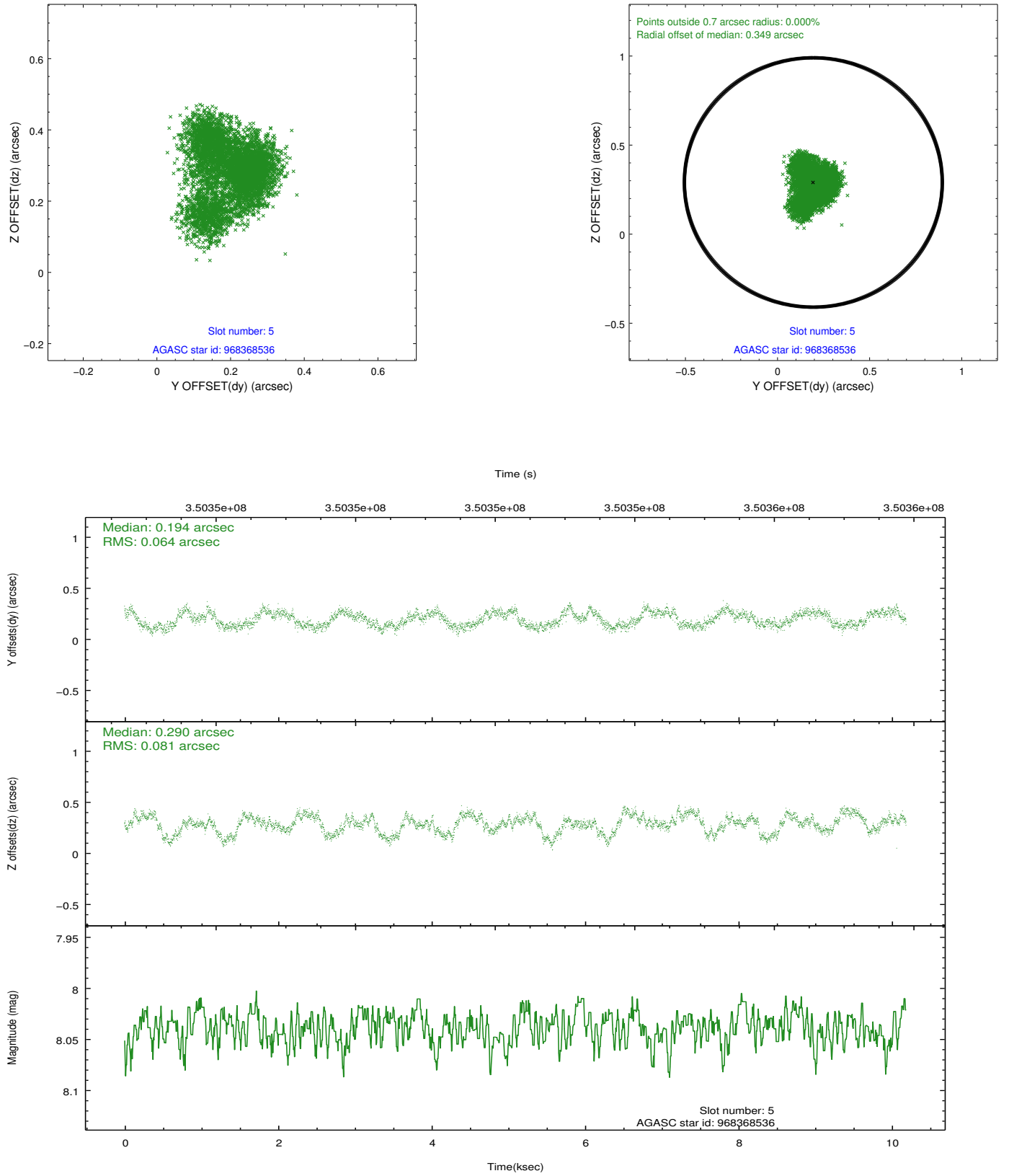
2.4.1 Slot 3



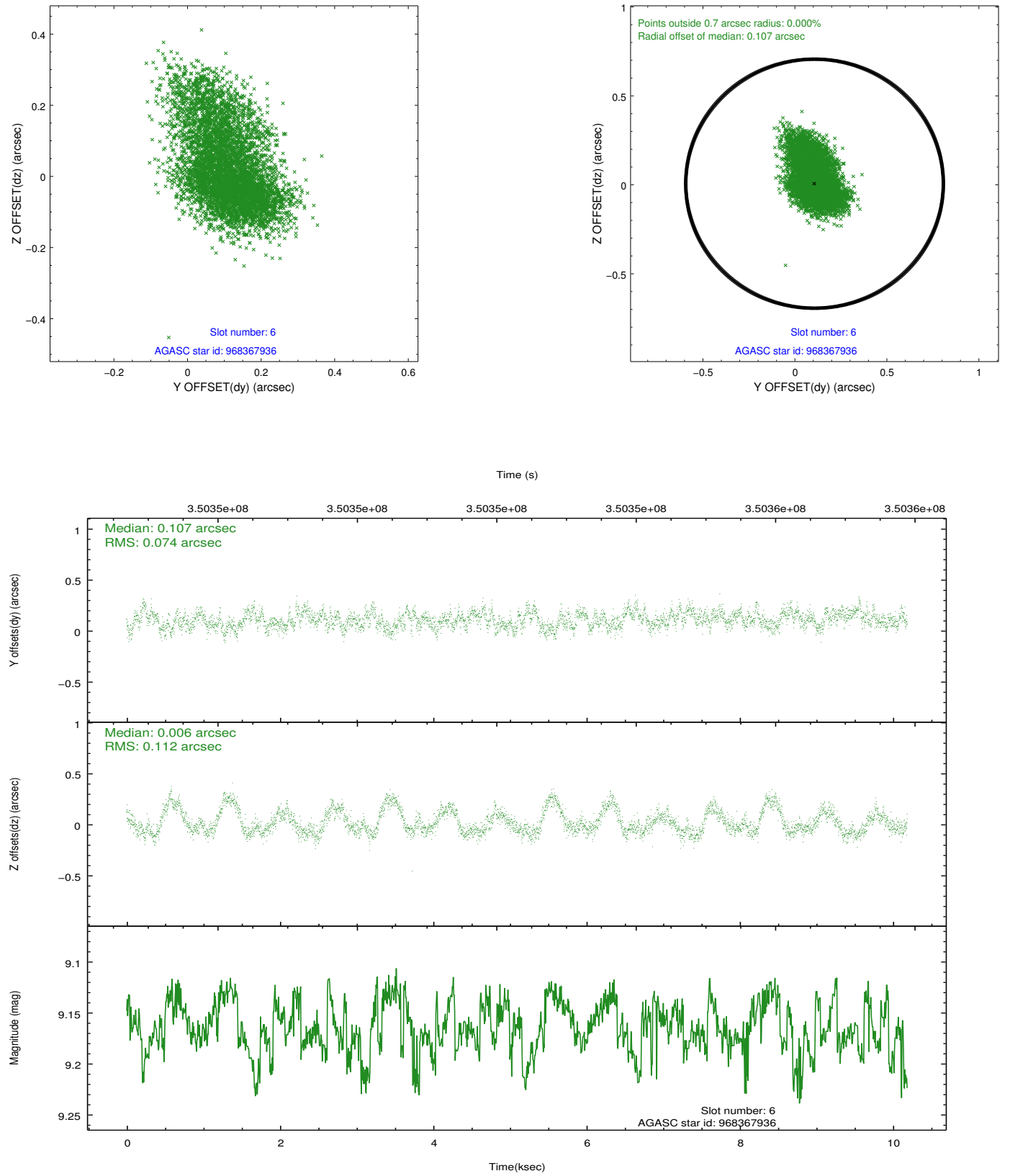
2.4.2 Slot 4



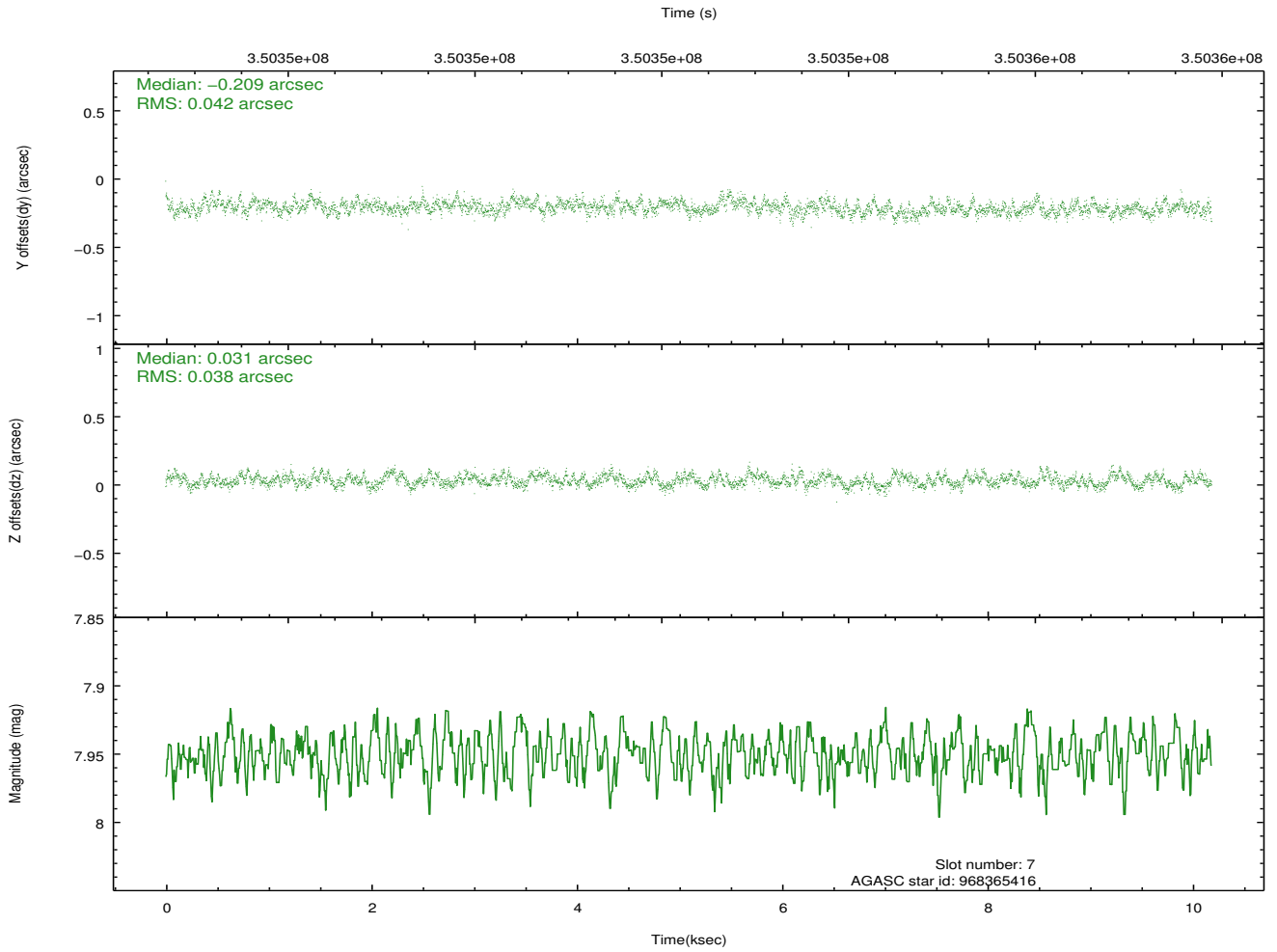
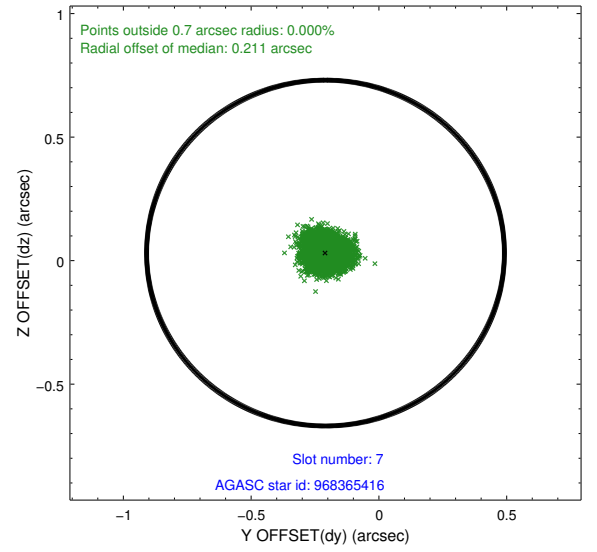
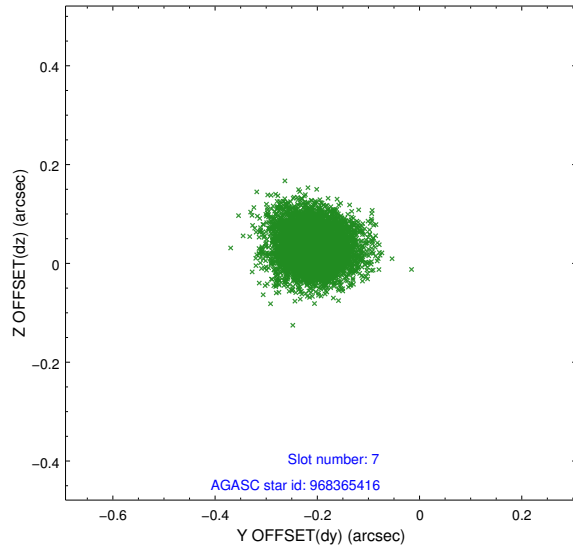
2.4.3 Slot 5



2.4.4 Slot 6

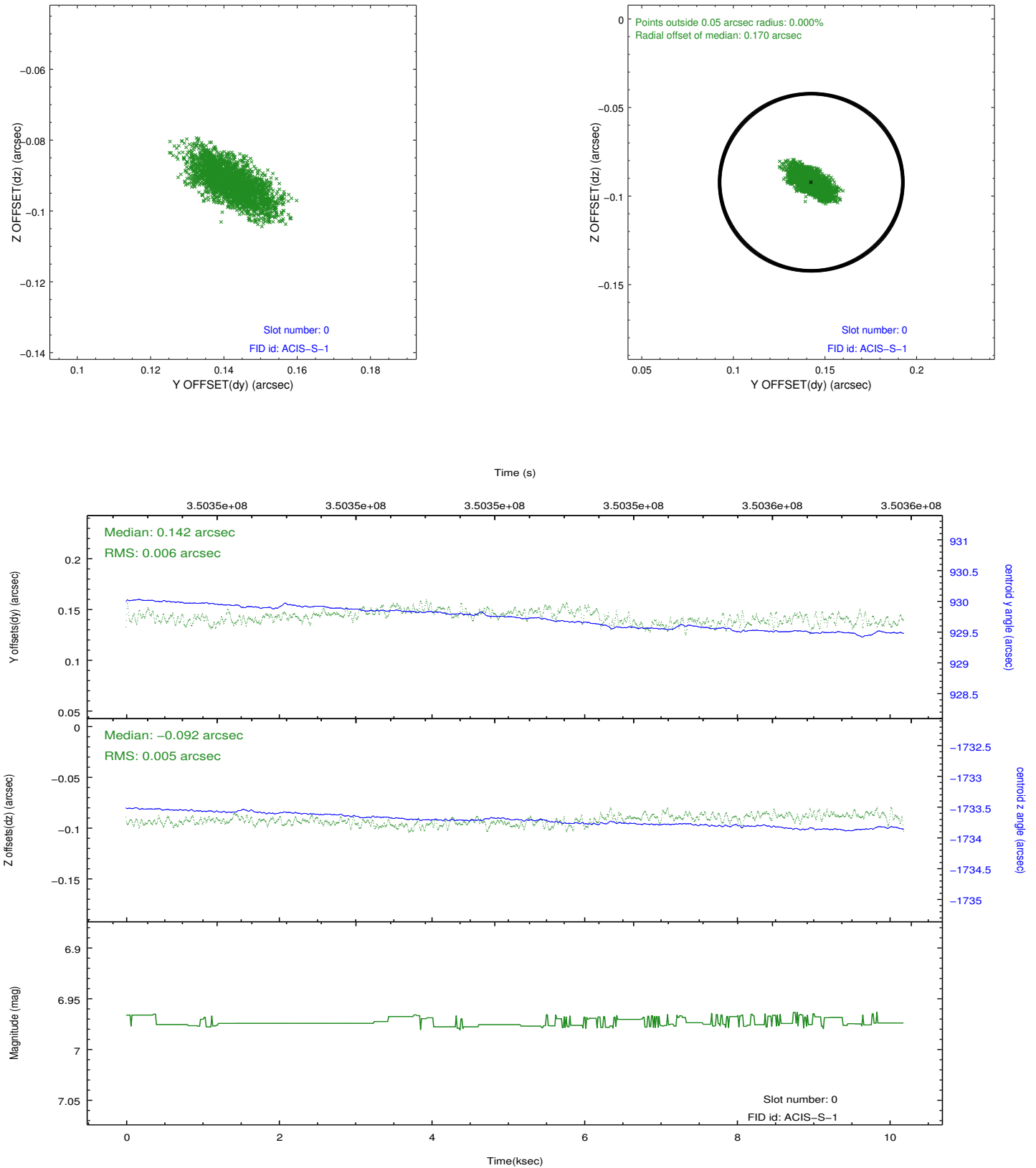


2.4.5 Slot 7

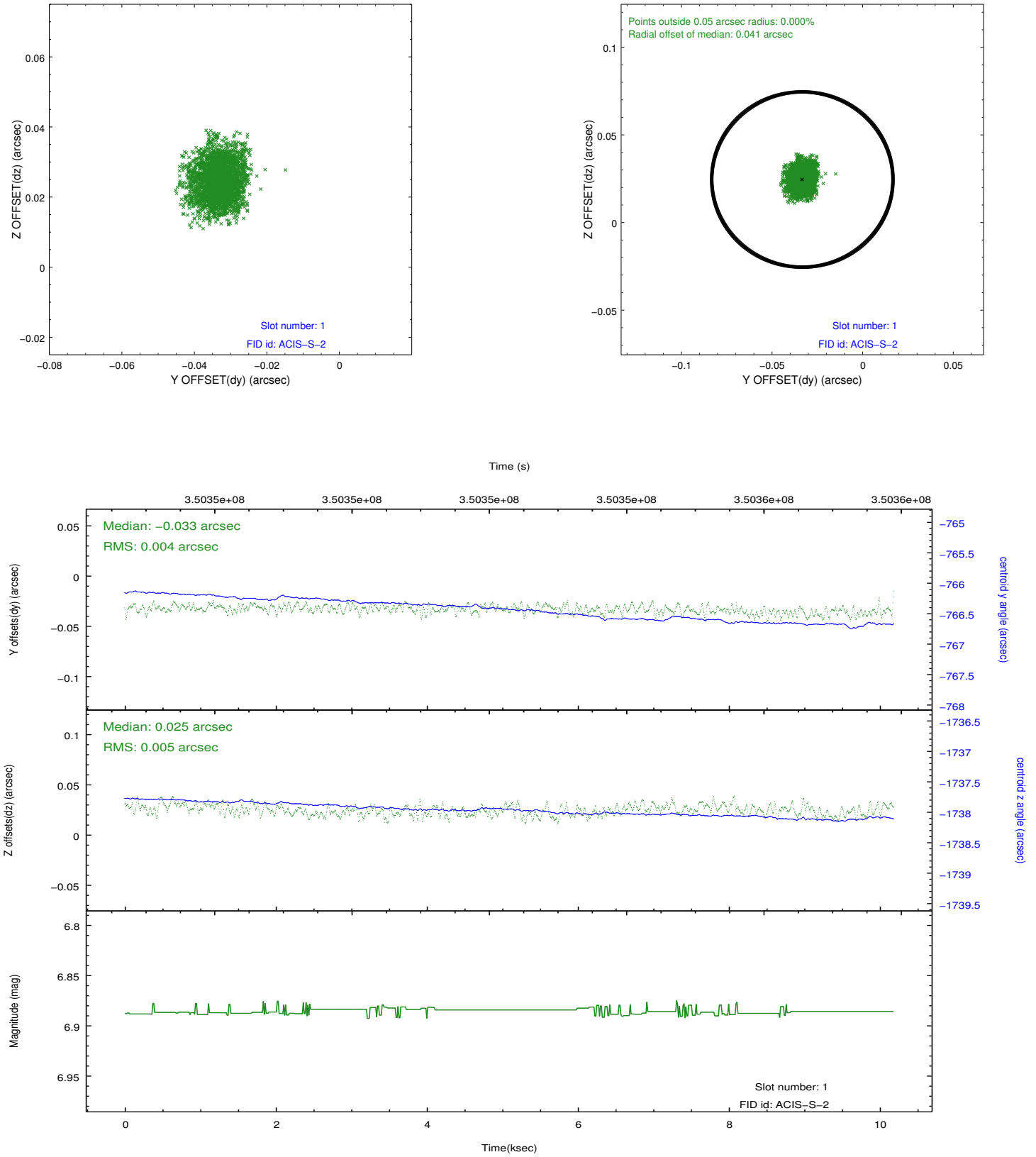


2.5 FID Slots

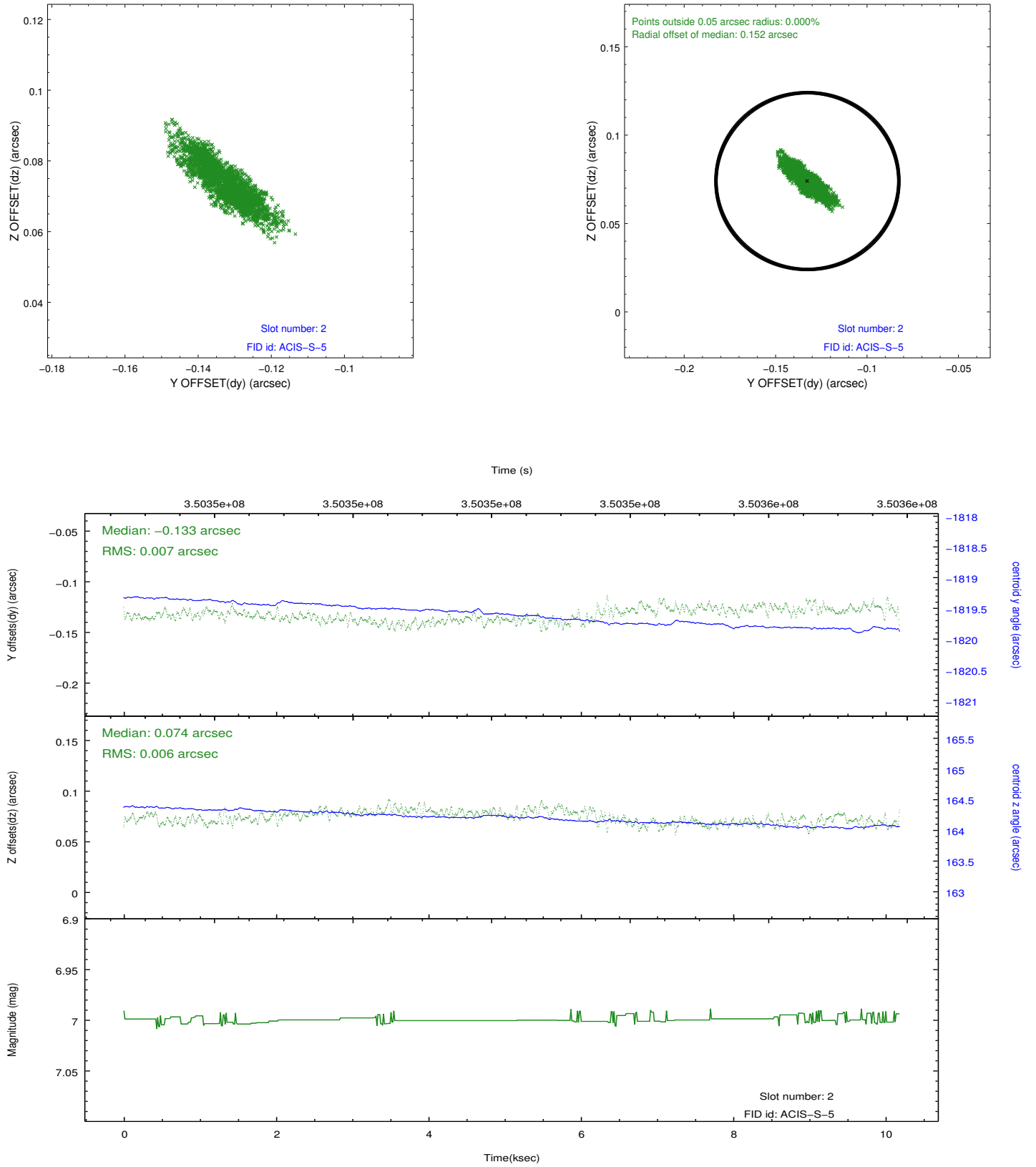
2.5.1 Slot 0



2.5.2 Slot 1



2.5.3 Slot 2



A Summary

A.1 Status

V&V Scientist	Jen Lauer
V&V Date (YYYY-MM-DD)	2012.06.06
V&V Edition	1
V&V Disposition and Status	OK
V&V Charge Time	9.75679996

A.2 Comments