

# V&V Reference Report

## L2 ASCDS Version : 8.4.4

Observation 10001 - L2 Version 2  
Chandra X-Ray Center

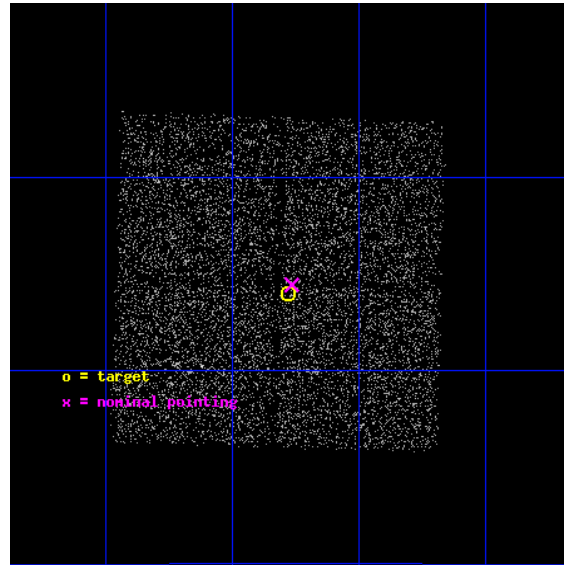
L2 Processing Date : Jun 1 2012

## Contents

<b>1</b>	<b>Front</b>	<b>2</b>
<b>2</b>	<b>OBI</b>	<b>3</b>
2.1	OBI . . . . .	3
2.1.1	Images . . . . .	3
2.1.2	Bias . . . . .	3
2.1.3	Parameters . . . . .	4
2.1.4	Events . . . . .	4
2.2	Compared Parameters . . . . .	5
2.3	Aspect . . . . .	6
2.4	Star Slots . . . . .	9
2.4.1	Slot 3 . . . . .	9
2.4.2	Slot 4 . . . . .	10
2.4.3	Slot 5 . . . . .	11
2.4.4	Slot 6 . . . . .	12
2.4.5	Slot 7 . . . . .	13
2.5	FID Slots . . . . .	14
2.5.1	Slot 0 . . . . .	14
2.5.2	Slot 1 . . . . .	15
2.5.3	Slot 2 . . . . .	16
<b>A</b>	<b>Summary</b>	<b>17</b>
A.1	Status . . . . .	17
A.2	Comments . . . . .	17

# 1 Front

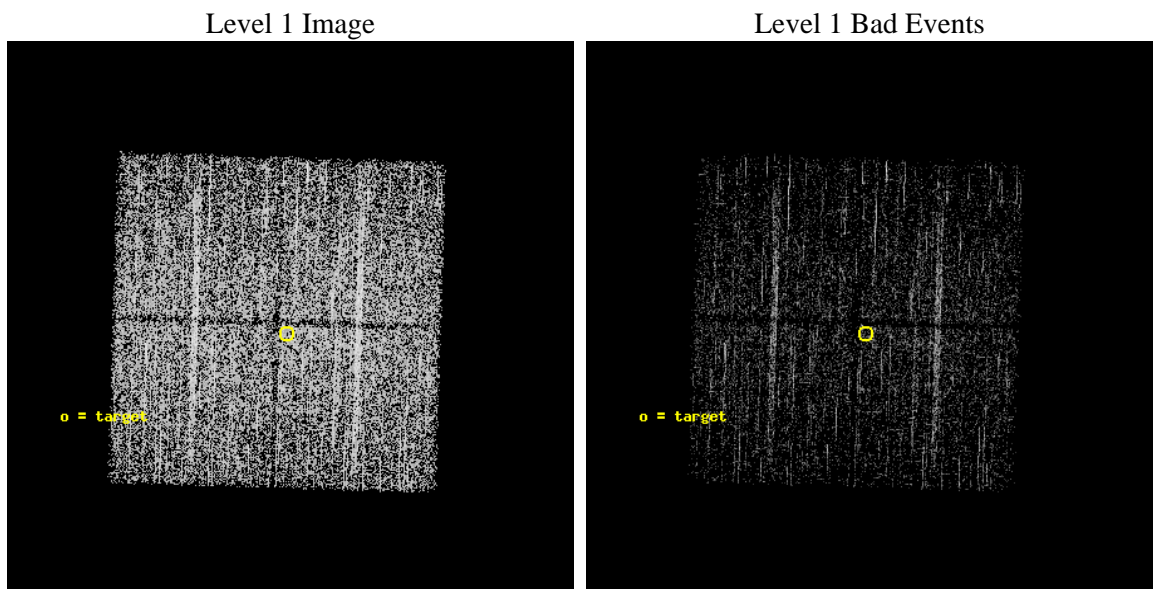
seq_num	400965	Sequence number
obs_id	10001	Observation id
title	Completing the Galactic Bulge Survey: categorising the plethora of faint X-ray sources in the Galactic Bulge	Proposal title
observer	dr Peter Jonker	Principal investigator
object	GBS5-10	Source name
dtcycle	0	&#160
cycle	P	events from which exps? Prim/Second/Both
ra_targ	264.569417	Observer's specified target RA [deg]
dec_targ	-27.933778	Observer's specified target Dec [deg]
ra_nom	264.56636745611	Nominal RA [deg]
dec_nom	-27.926281493329	Nominal Dec [deg]
roll_nom	91.762171861107	Nominal Roll [deg]
revision	2	Processing version of data
ontime	2185.5000168085	Sum of GTIs [s]
livetime	2156.9448501472	Livetime [s]
ontime0	2185.5000168085	Sum of GTIs [s]
ontime1	2185.5000168085	Sum of GTIs [s]
ontime2	2185.5000168085	Sum of GTIs [s]
ontime3	2185.5000168085	Sum of GTIs [s]
l2events	10479	Number of level 2 events



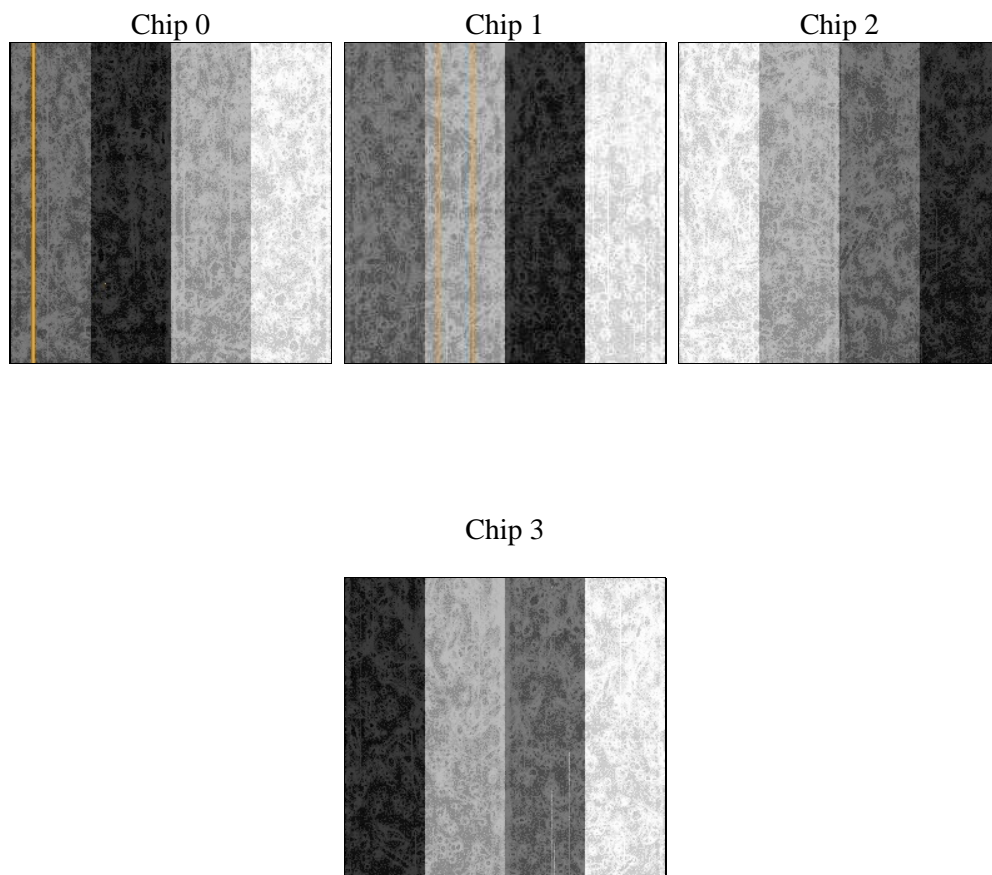
## 2 OBI

### 2.1 OBI

#### 2.1.1 Images



#### 2.1.2 Bias



### 2.1.3 Parameters

obi_num	0	Obi number	sched_exp_time	2000.000000	[s] Scheduled observation exposure time
ascdsver	8.4.4	Processing system revision	ontime	2185.5000168085	Sum of GTIs [s]
caldsver	4.4.9	&#160	ontime0	2185.5000168085	Sum of GTIs [s]
date	2012-06-01T06:28:24	Date and time of file creation	ontime1	2185.5000168085	Sum of GTIs [s]
revision	2	Processing version of data	ontime2	2185.5000168085	Sum of GTIs [s]
			ontime3	2185.5000168085	Sum of GTIs [s]
			l1events	94355	Number of level 1 events

### 2.1.4 Events

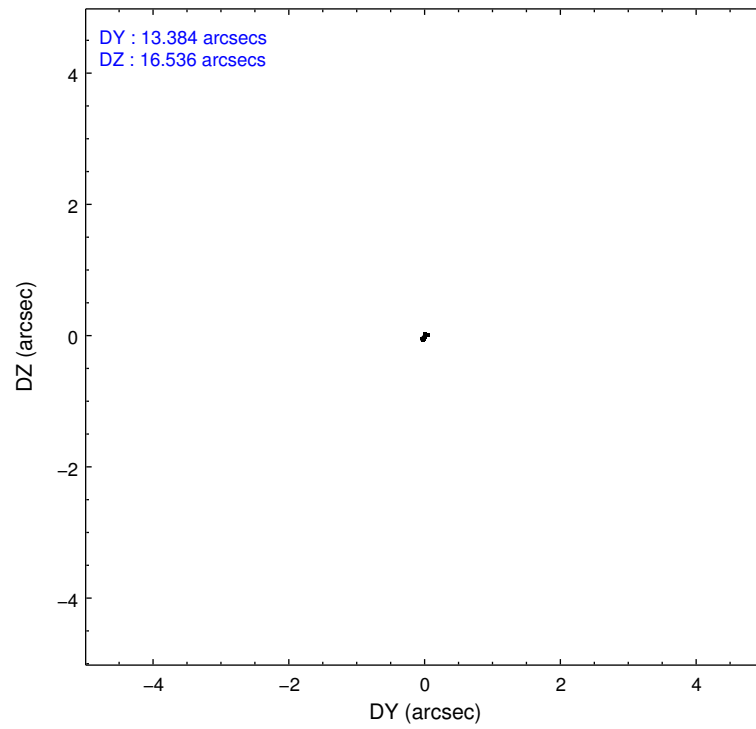
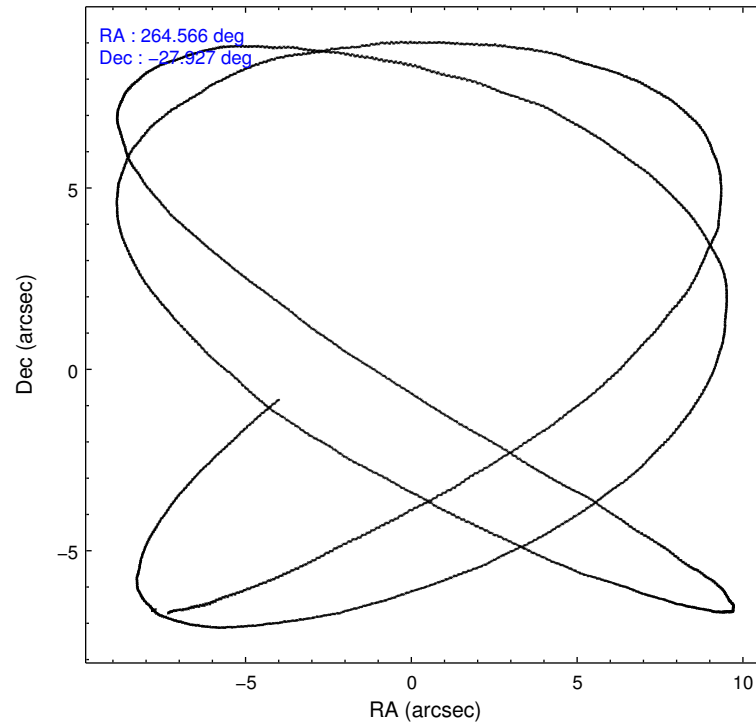
	ccd 0	ccd 1	ccd 2	ccd 3
level 1 events	22372	23584	24243	24156
rejected events	19343	20345	21300	21197
rejected %	86%	86%	87%	87%

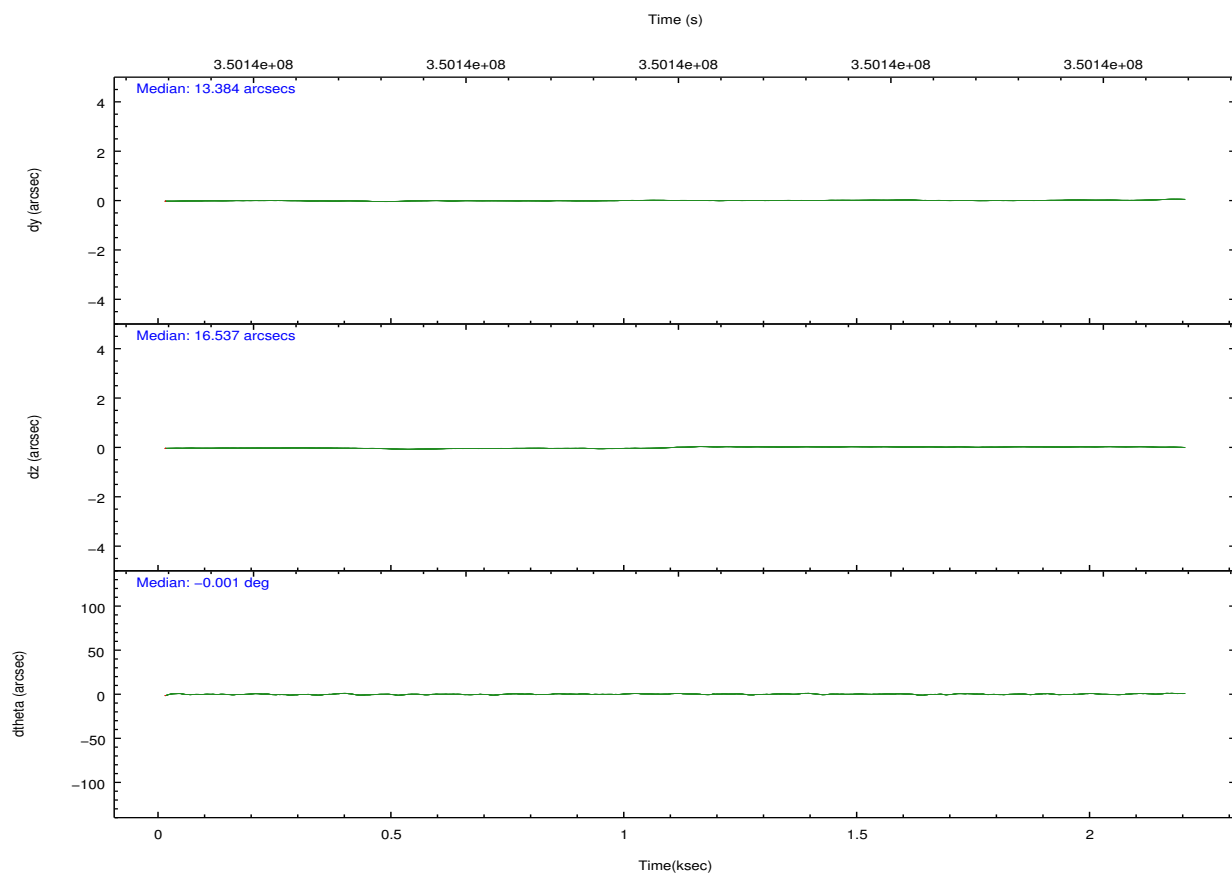
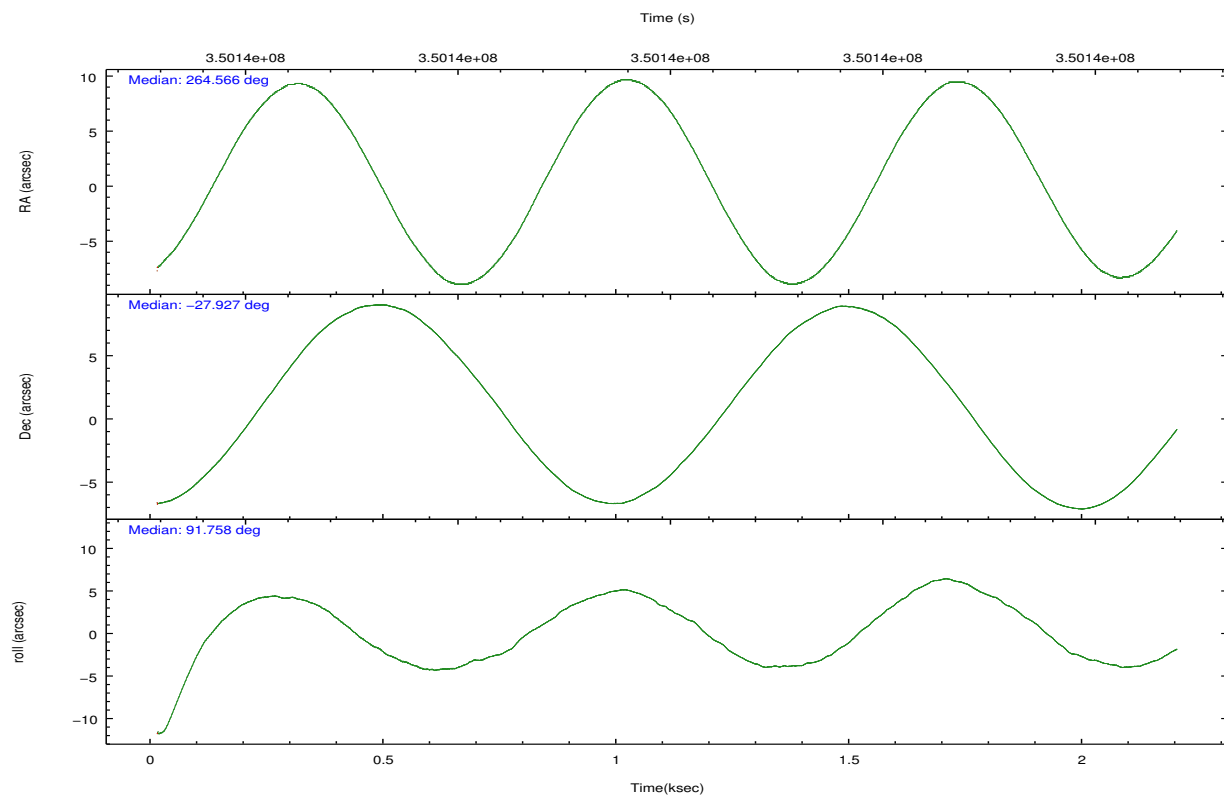
	ccd 0	ccd 1	ccd 2	ccd 3
grade 0 events	1512	1480	1546	1474
	6%	6%	6%	6%
grade 1 events	16	19	20	17
	0%	0%	0%	0%
grade 2 events	731	846	664	602
	3%	3%	2%	2%
grade 3 events	289	285	276	306
	1%	1%	1%	1%
grade 4 events	264	283	271	314
	1%	1%	1%	1%
grade 5 events	1030	1025	965	1183
	4%	4%	3%	4%
grade 6 events	506	626	487	512
	2%	2%	2%	2%
grade 7 events	18024	19020	20014	19748
	80%	80%	82%	81%

## 2.2 Compared Parameters

Parameter	Planned	Actual	Parameter	Planned	Actual
Instrument	ACIS	ACIS	Obspar format version number	7	7
Detector	ACIS-0123	ACIS-0123	Obspar file type	PREDICTED	ACTUAL
Grating	NONE	NONE	Obspar update status	NONE	UPDATED
Data mode	VFAINT	VFAINT	Number of optional ACIS chips dropped	0	0
Observation mode	POINTING	POINTING	On-chip summing requested	N	N
[deg] Pointing RA	264.582919	264.5663674561088	Subarray requested	NONE	NONE
[deg] Pointing Dec	-27.949460	-27.92628149332936	Alternating exposures requested	N	N
[deg] Pointing Roll	91.561254	91.76217186110696	[s] Primary exposure time	0.000000	3.1
[mm] SIM focus pos	-0.782348	-0.7809083437167272			
[mm] SIM defocus	0	0.001439871863259334			
[mm] SIM translation stage pos	-233.592463	-233.5874344608287			
[mm] SIM translation stage offset	0	-0.005018542100998502			
[s] Observation start time (MET)	350142094.184000	350141717.48301			
Observation start date	2009-02-04T13:40:28	2009-02-04T13:35:17			
[s] Observation end time (MET)	350144094.184000	350144609.00815			
Observation end date	2009-02-04T14:13:48	2009-02-04T14:23:29			
Read mode	TIMED	TIMED			

## 2.3 Aspect





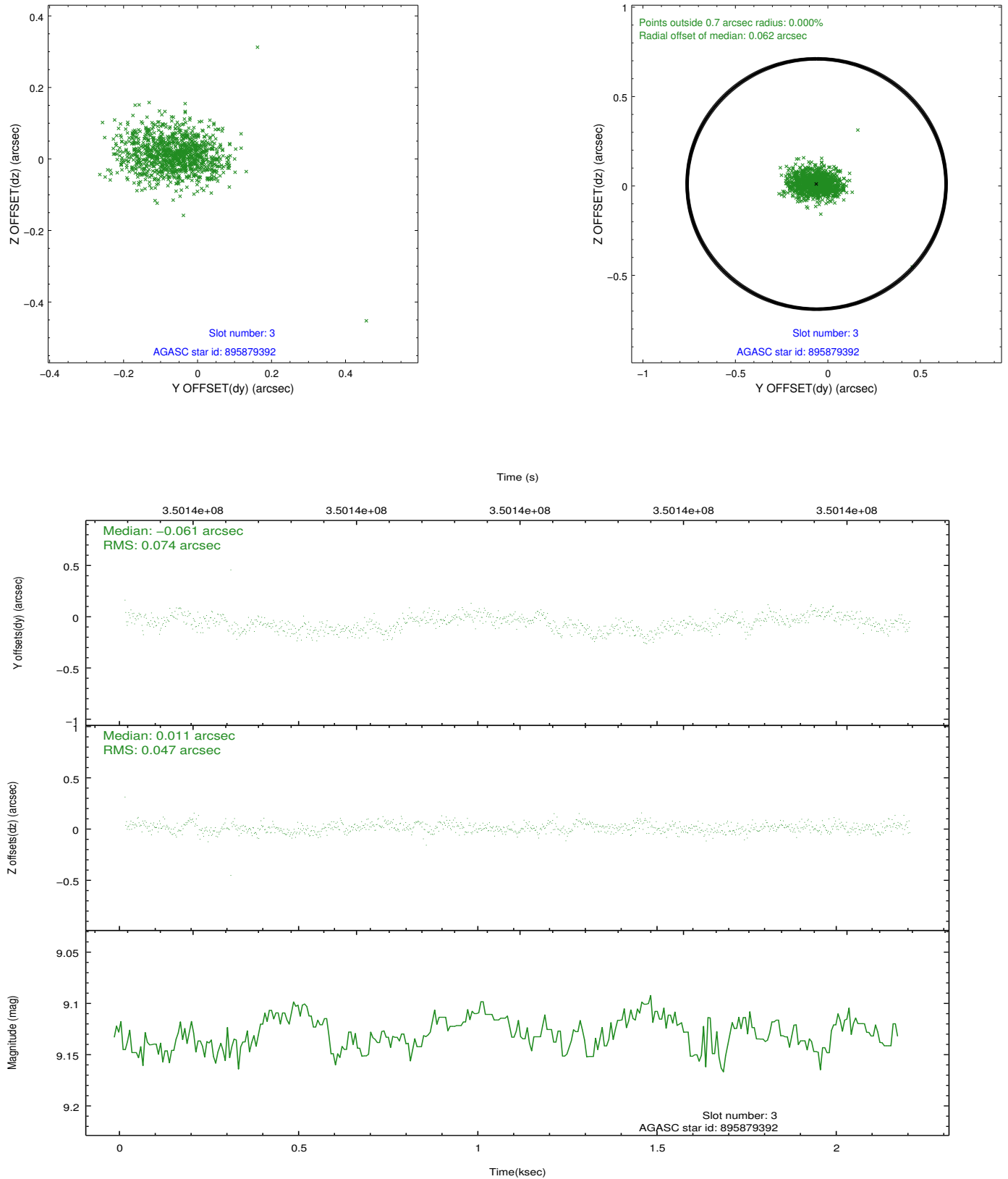
### Slot Statistics

slot	status	id	mag	n_pts	med_dy	med_dz	dr1	dr2	ra	dec	mean_y	mean_z
0	FID	ACIS-I-1	7.00	535	0.062	-0.035	0.006	0.010	0.000000	0.000000	926.16	-840.22
1	FID	ACIS-I-5	7.00	535	-0.197	0.068	0.006	0.010	0.000000	0.000000	-1820.52	1055.93
2	FID	ACIS-I-6	7.00	535	0.044	0.038	0.006	0.011	0.000000	0.000000	388.50	1703.73
3	GUIDE	895879392	9.13	1068	-0.061	0.011	0.092	0.148	264.792874	-27.441876	1808.59	-720.22
4	GUIDE	895879840	7.22	1069	-0.258	0.191	0.058	0.103	265.218397	-27.395778	1934.28	-2084.81
5	GUIDE	896403960	8.58	1068	0.120	-0.112	0.068	0.110	264.379044	-28.245612	-1045.98	673.22
6	GUIDE	896405616	7.84	1069	0.099	0.127	0.062	0.098	264.752771	-28.412560	-1682.27	-490.92
7	GUIDE	896406568	8.24	1068	0.100	-0.212	0.065	0.102	264.435951	-28.437282	-1743.81	512.12

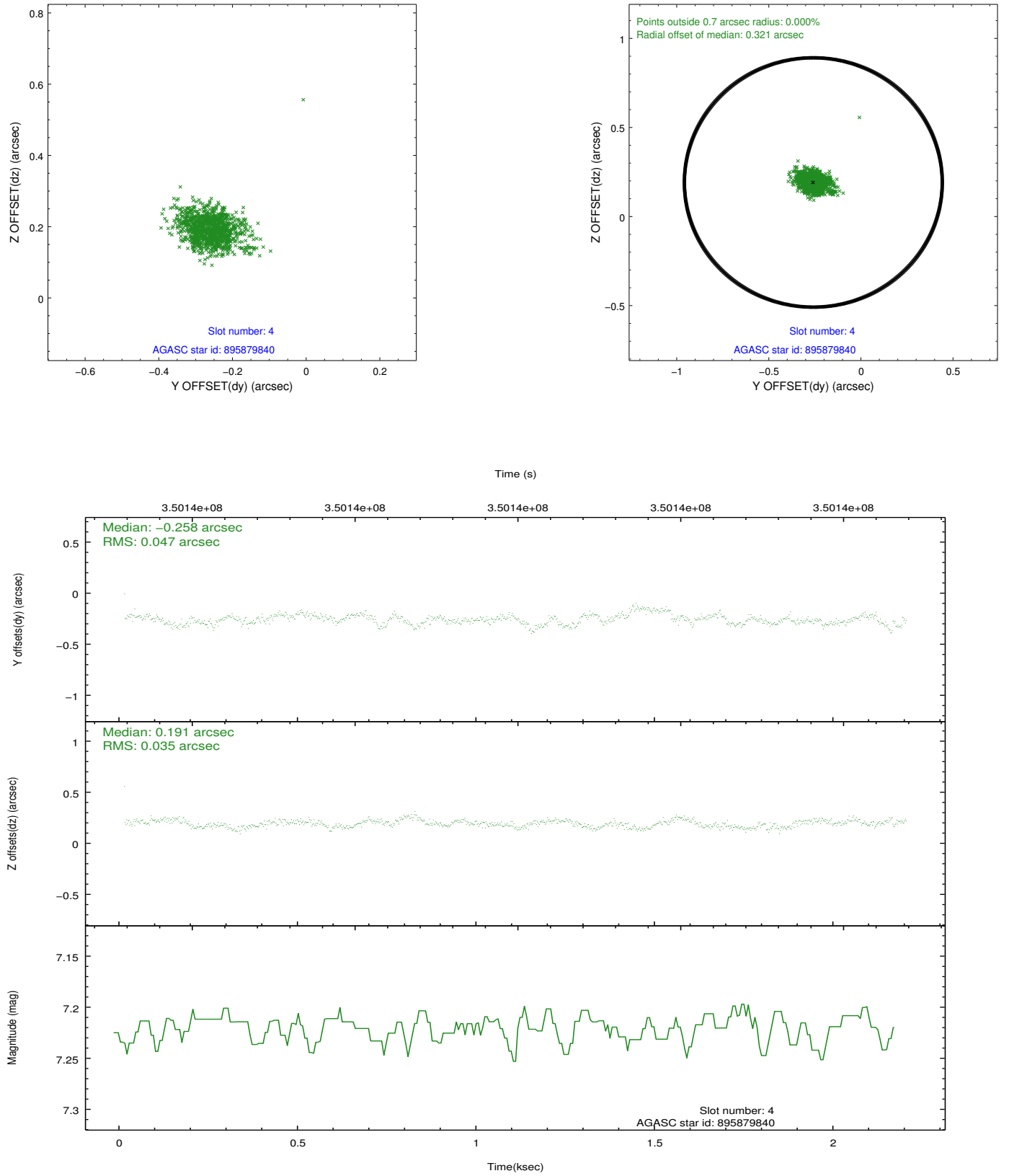


## 2.4 Star Slots

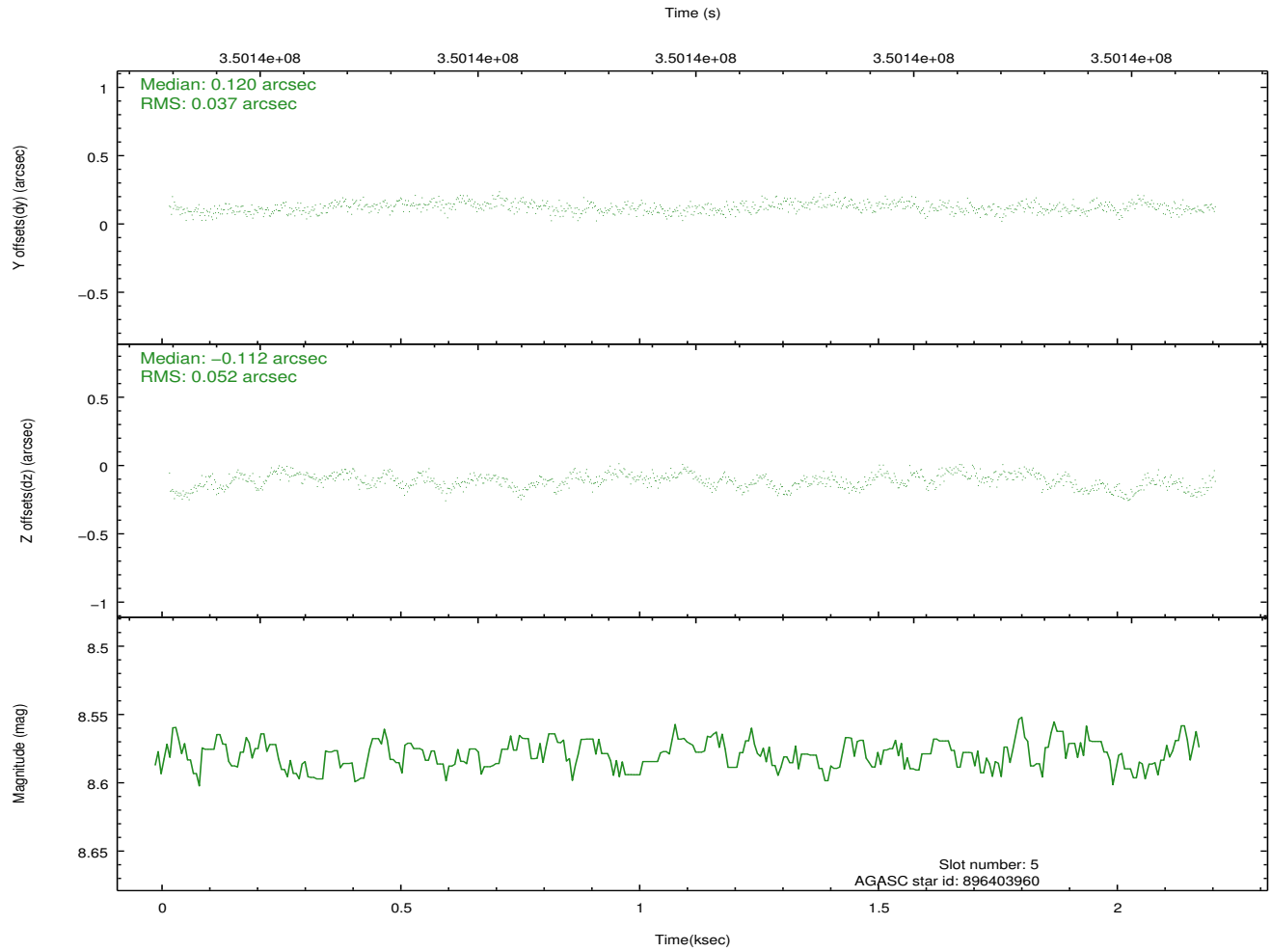
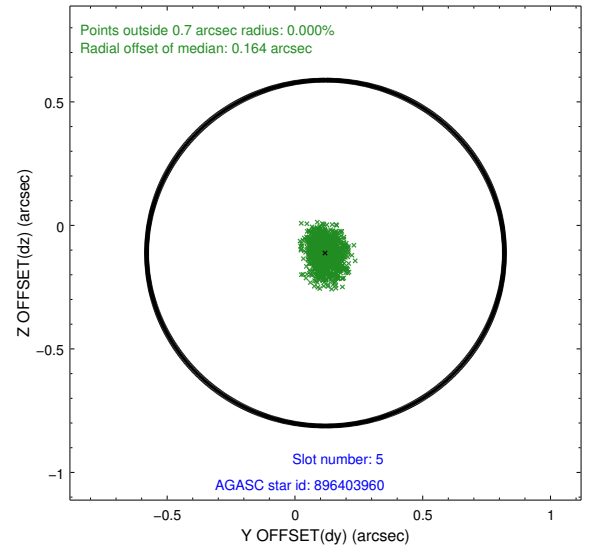
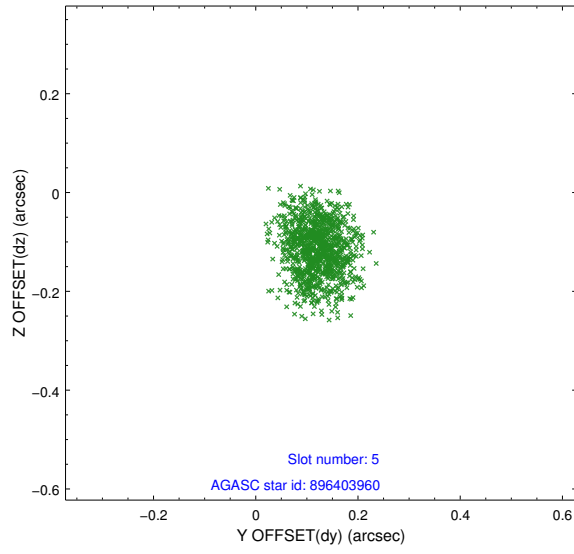
### 2.4.1 Slot 3



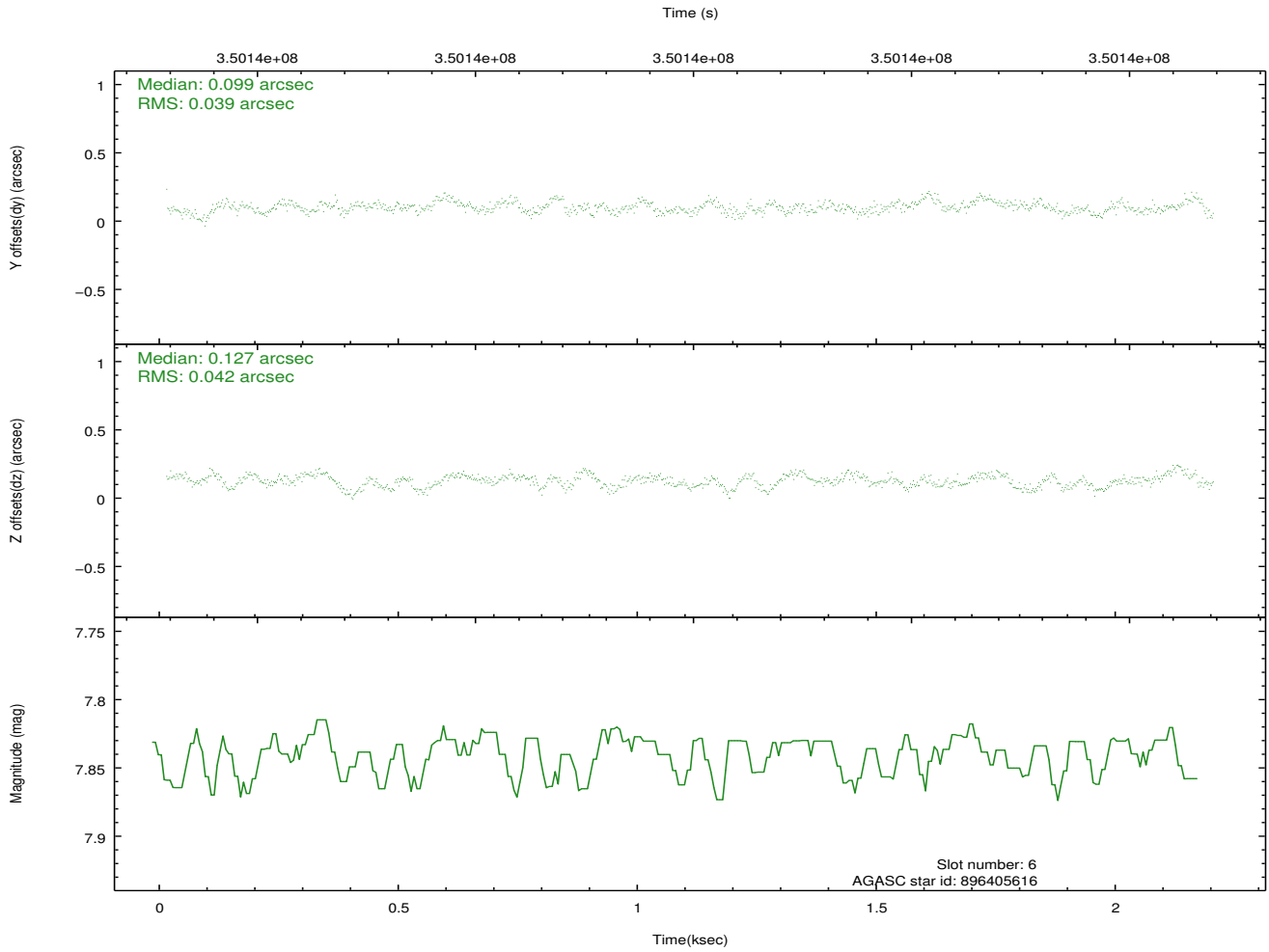
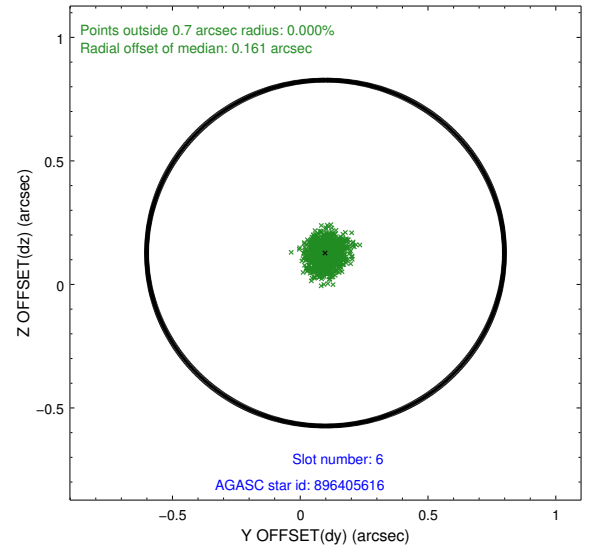
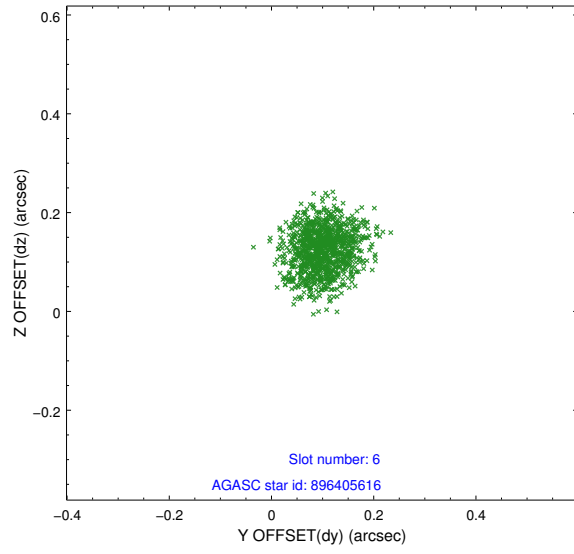
## 2.4.2 Slot 4



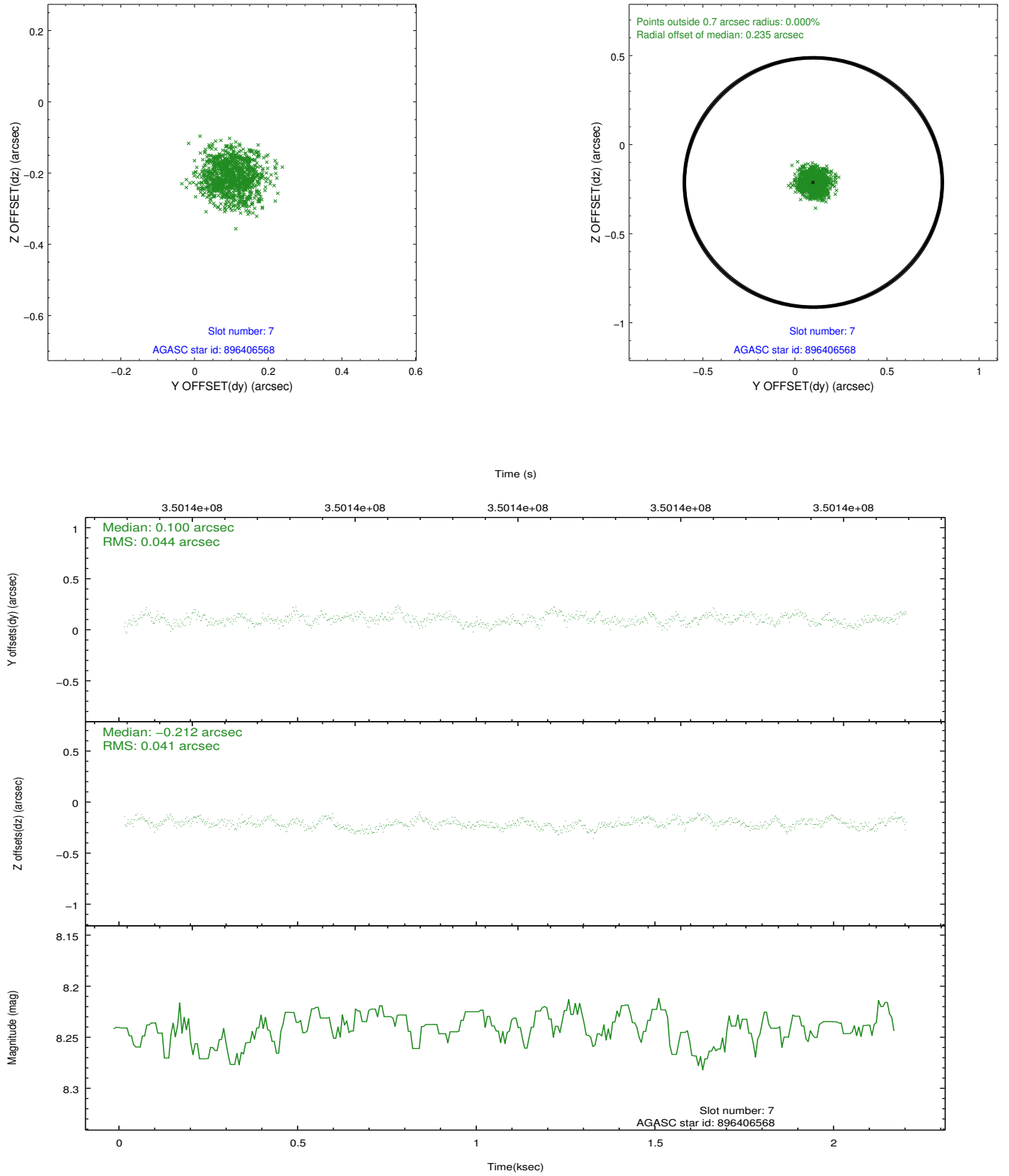
### 2.4.3 Slot 5



## 2.4.4 Slot 6

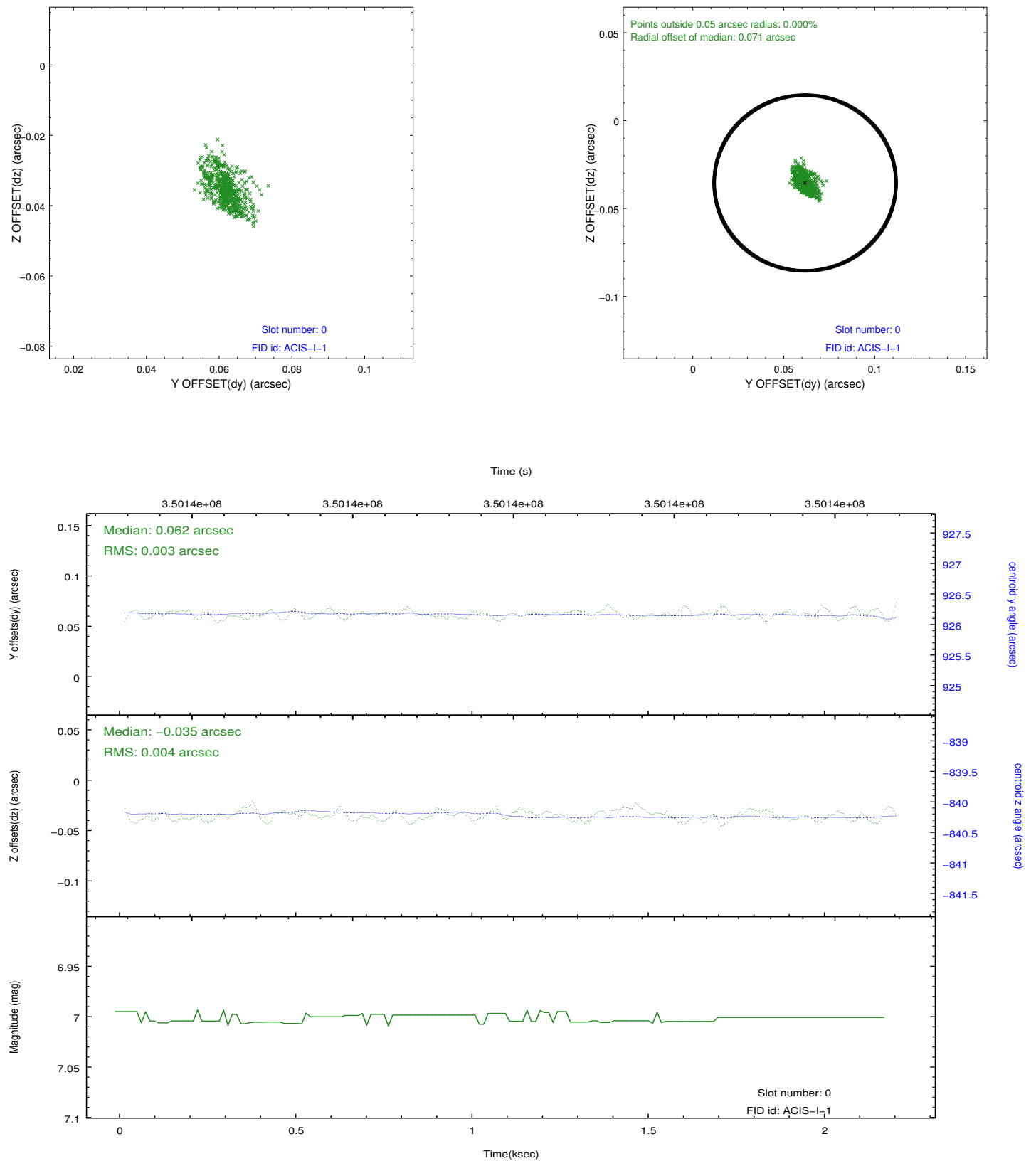


## 2.4.5 Slot 7

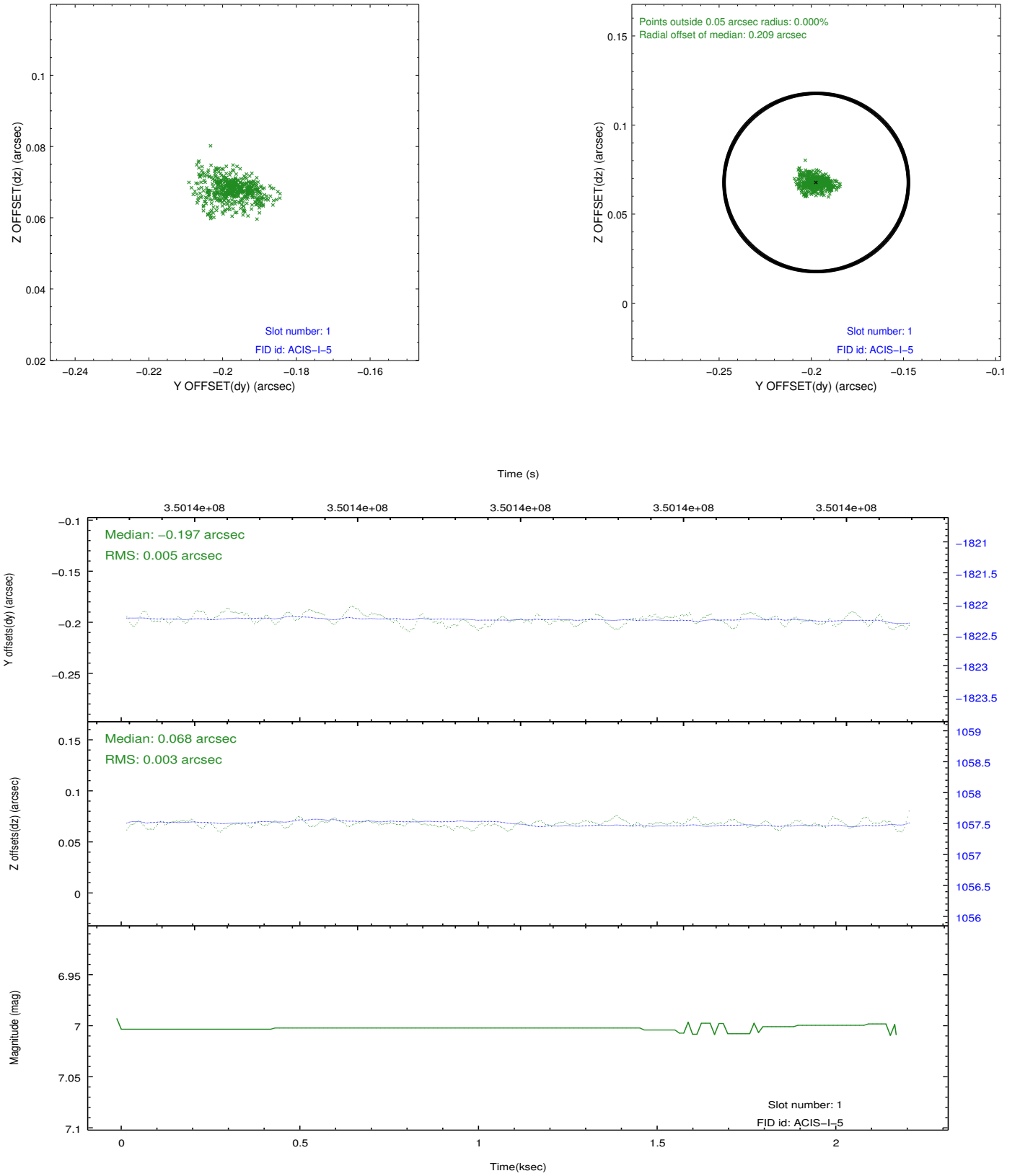


## 2.5 FID Slots

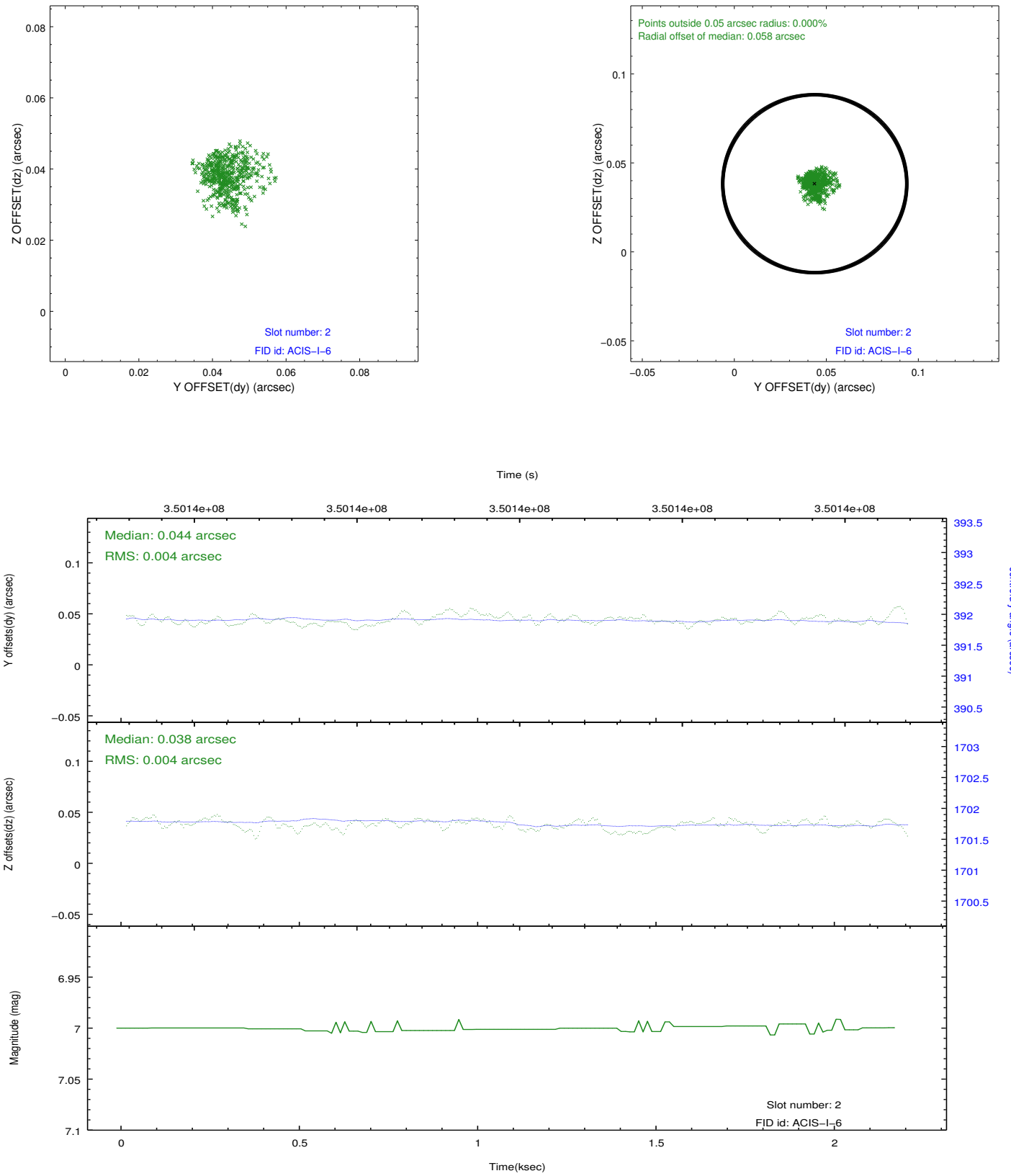
### 2.5.1 Slot 0



## 2.5.2 Slot 1



### 2.5.3 Slot 2





## A Summary

### A.1 Status

V&V Scientist	Beth Sundheim
V&V Date (YYYY-MM-DD)	2012.06.06
V&V Edition	1
V&V Disposition and Status	OK
V&V Charge Time	2.18550001

### A.2 Comments