

V&V Reference Report

L2 ASCDS Version : 8.4.4

Observation 9961 - L2 Version 2
Chandra X-Ray Center

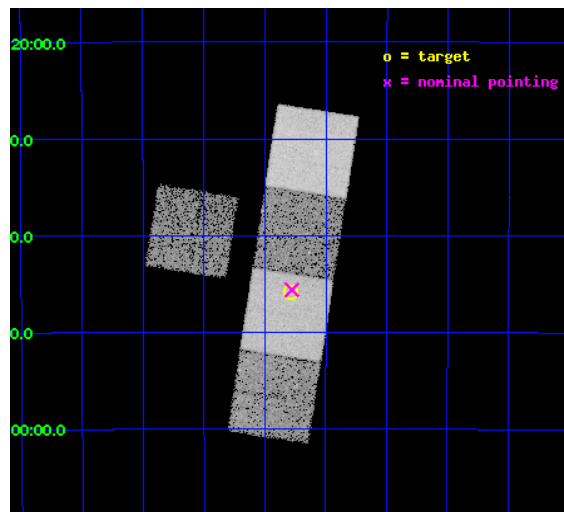
L2 Processing Date : Jun 1 2012

Contents

1	Front	2
2	OBI	3
2.1	OBI	3
2.1.1	Images	3
2.1.2	Bias	3
2.1.3	Parameters	4
2.1.4	Events	4
2.2	Compared Parameters	5
2.3	Aspect	6
2.4	Star Slots	9
2.4.1	Slot 3	9
2.4.2	Slot 4	10
2.4.3	Slot 5	11
2.4.4	Slot 6	12
2.4.5	Slot 7	13
2.5	FID Slots	14
2.5.1	Slot 0	14
2.5.2	Slot 1	15
2.5.3	Slot 2	16
A	Summary	17
A.1	Status	17
A.2	Comments	17

1 Front

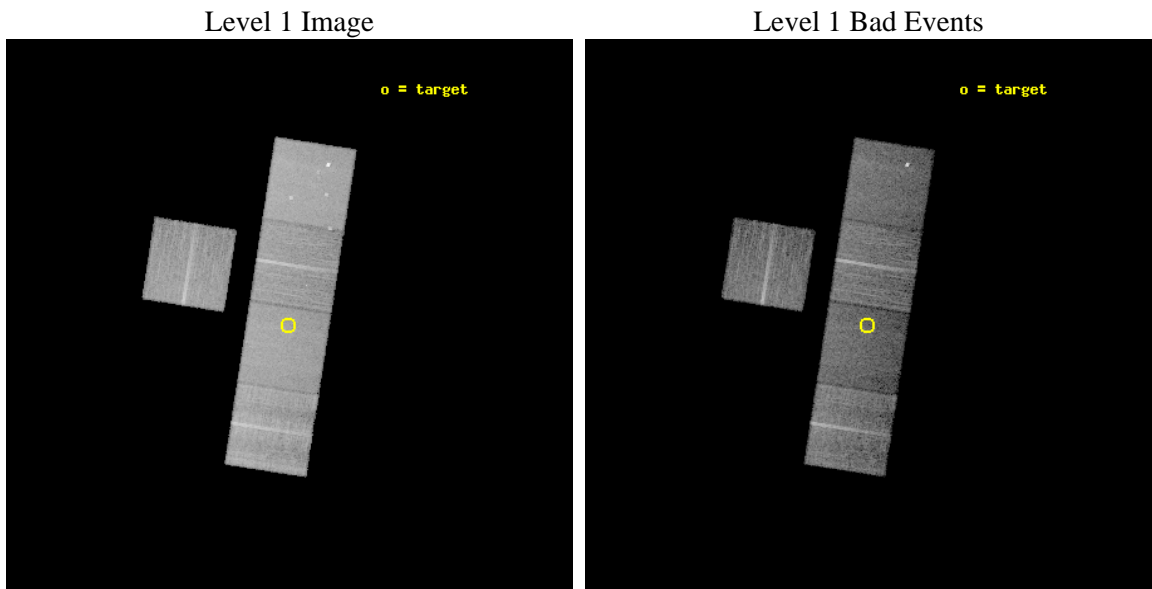
seq_num	300248	Sequence number
obs_id	9961	Observation id
title	Understanding the Current Dynamical States of Globular Clusters	Pr
observer	Prof. David Pooley	Principal investigator
object	NGC 6558	Source name
dtcycle	0	
cycle	P	events from which exps? Prim/Second/Both
ra_targ	272.573333	Observer's specified target RA [deg]
dec_targ	-31.763889	Observer's specified target Dec [deg]
ra_nom	272.56962662334	Nominal RA [deg]
dec_nom	-31.760205684738	Nominal Dec [deg]
roll_nom	98.855215779456	Nominal Roll [deg]
revision	2	Processing version of data
ontime	11130.743196666	Sum of GTIs [s]
livetime	10985.311842468	Livetime [s]
ontime2	11130.579036653	Sum of GTIs [s]
ontime5	11130.702156663	Sum of GTIs [s]
ontime6	11130.66111666	Sum of GTIs [s]
ontime7	11130.743196666	Sum of GTIs [s]
ontime8	11124.338126063	Sum of GTIs [s]
l2events	143332	Number of level 2 events



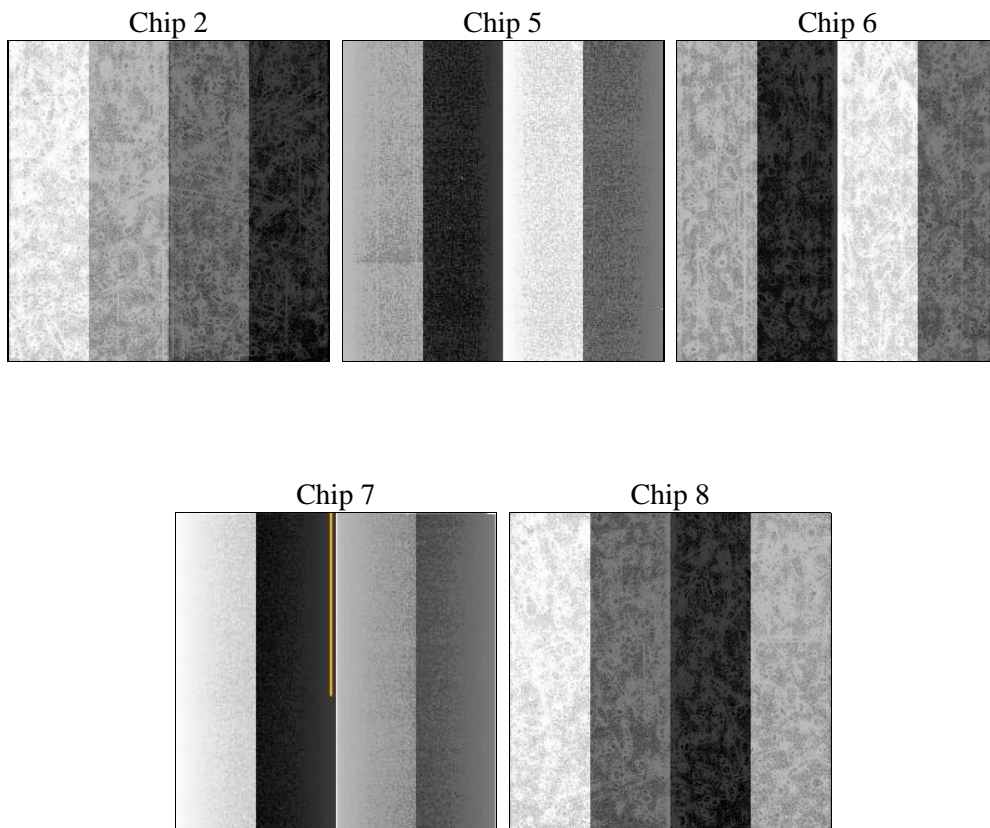
2 OBI

2.1 OBI

2.1.1 Images



2.1.2 Bias



2.1.3 Parameters

obi_num	0	Obi number	sched_exp_time	11100.000000	[s] Scheduled observation exposure time
ascdsver	8.4.4	Processing system revision	ontime	11130.743196666	Sum of GTIs [s]
caldsver	4.4.9	 	ontime2	11130.579036653	Sum of GTIs [s]
date	2012-06-01T09:17:00	Date and time of file creation	ontime5	11130.702156663	Sum of GTIs [s]
revision	2	Processing version of data	ontime6	11130.66111666	Sum of GTIs [s]
			ontime7	11130.743196666	Sum of GTIs [s]
			ontime8	11124.338126063	Sum of GTIs [s]
			l1events	570508	Number of level 1 events

2.1.4 Events

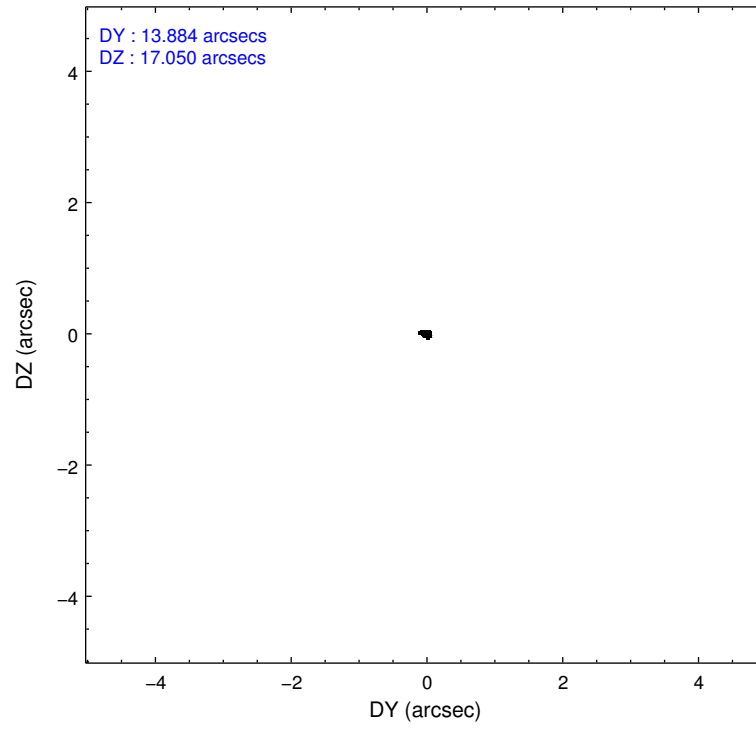
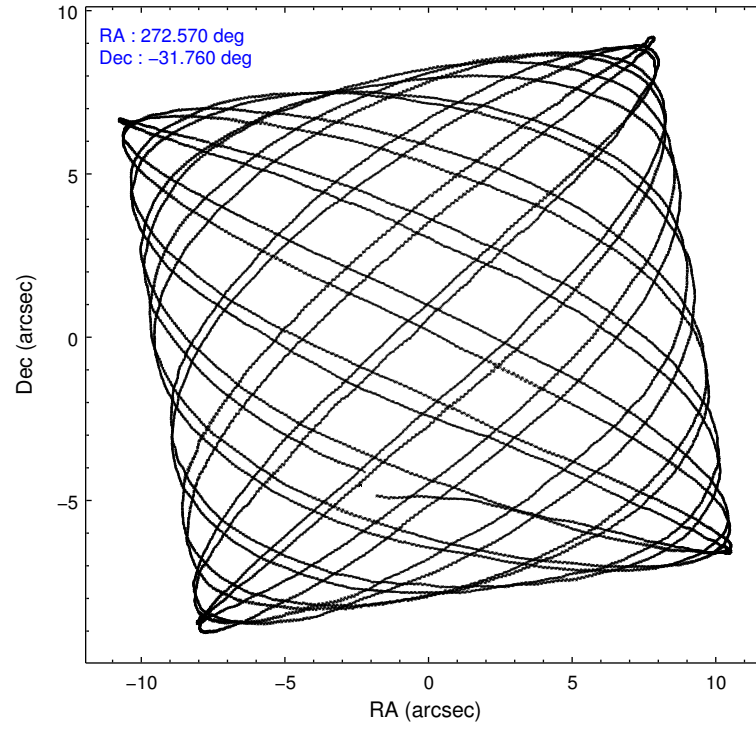
	ccd 2	ccd 5	ccd 6	ccd 7	ccd 8
level 1 events	98199	138968	98836	109985	124520
rejected events	88238	69617	87569	58966	91565
rejected %	89%	50%	88%	53%	73%

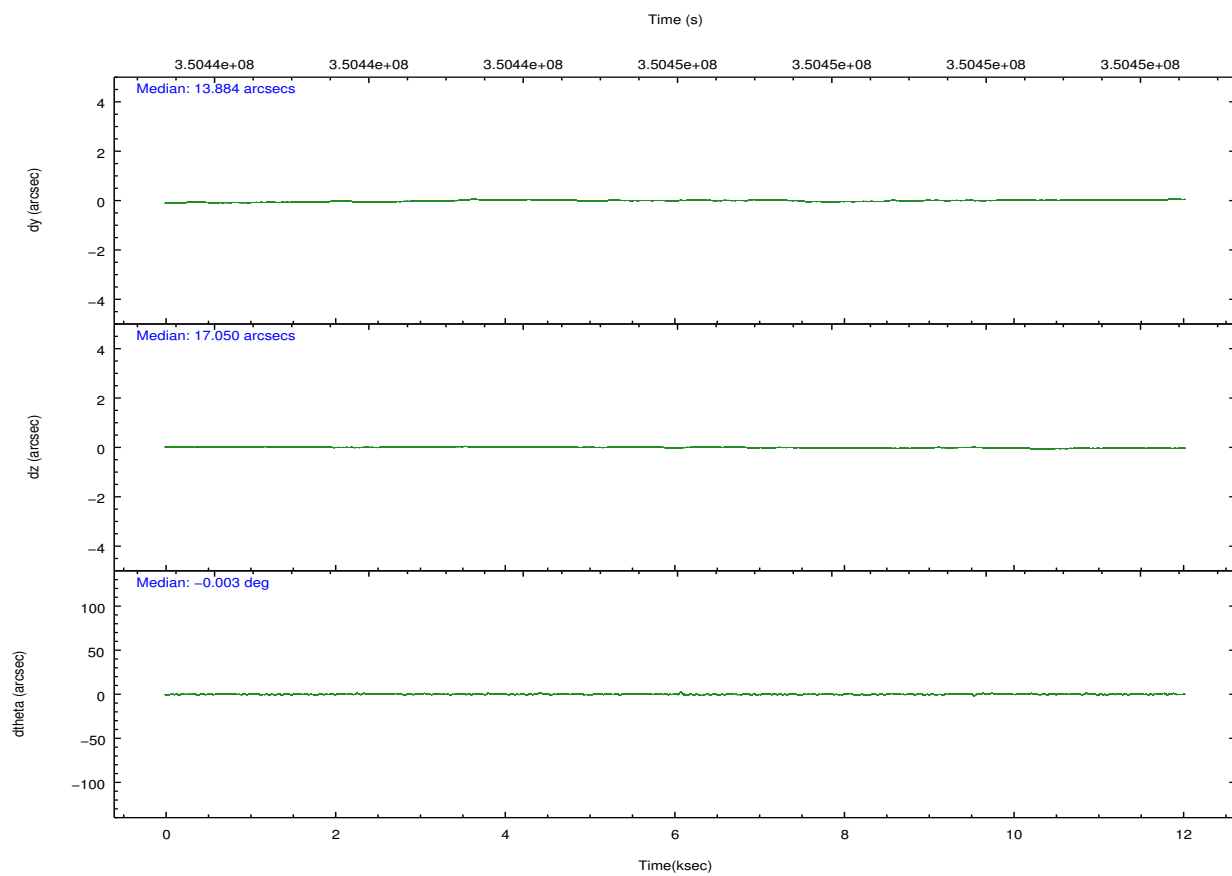
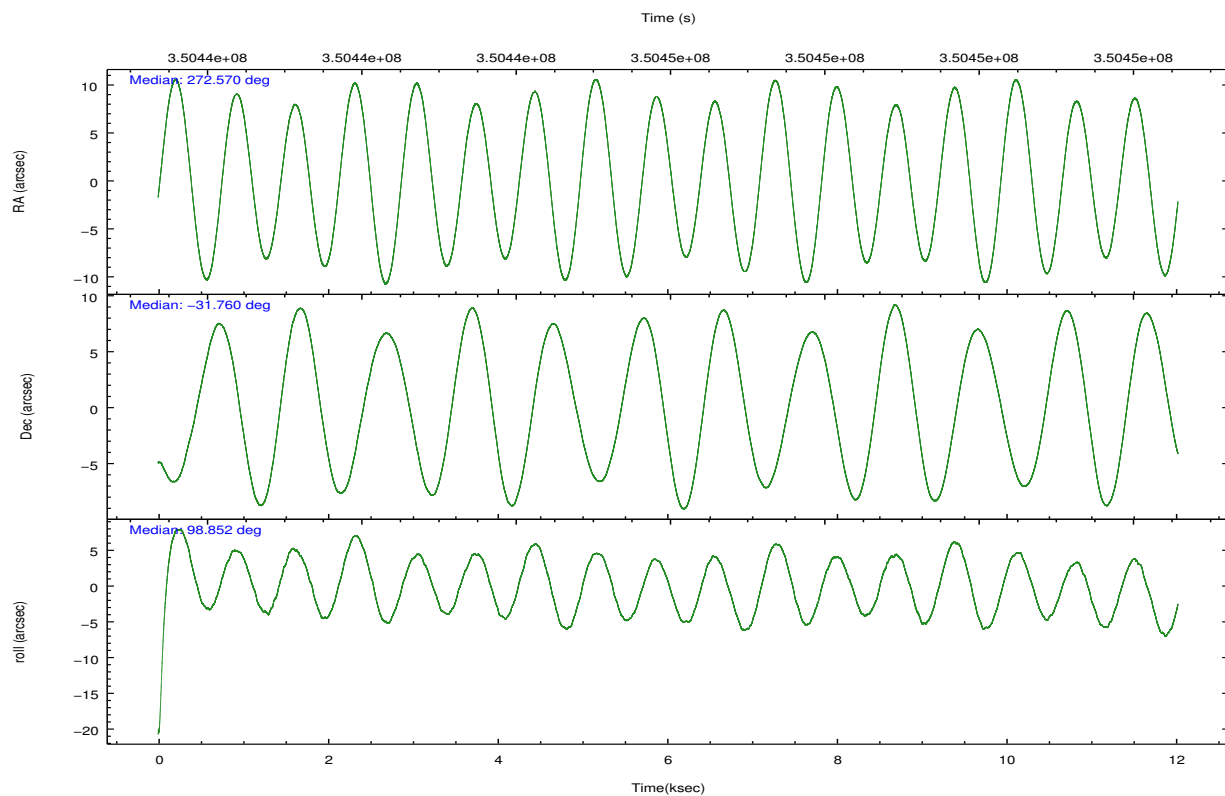
	ccd 2	ccd 5	ccd 6	ccd 7	ccd 8
grade 0 events	3950	6813	4594	5092	10342
	4%	4%	4%	4%	8%
grade 1 events	60	251	51	159	137
	0%	0%	0%	0%	0%
grade 2 events	2237	21641	2290	10388	7440
	2%	15%	2%	9%	5%
grade 3 events	1001	2972	1085	4619	3314
	1%	2%	1%	4%	2%
grade 4 events	1039	2805	1105	4548	3079
	1%	2%	1%	4%	2%
grade 5 events	3145	11374	3904	11181	5801
	3%	8%	3%	10%	4%
grade 6 events	1736	35143	2196	26384	8785
	1%	25%	2%	23%	7%
grade 7 events	85031	57969	83611	47614	85622
	86%	41%	84%	43%	68%

2.2 Compared Parameters

Parameter	Planned	Actual	Parameter	Planned	Actual
Instrument	ACIS	ACIS	Obspar format version number	7	7
Detector	ACIS-25678	ACIS-25678	Obspar file type	PREDICTED	ACTUAL
Grating	NONE	NONE	Obspar update status	NONE	UPDATED
Data mode	VFAINT	VFAINT	CCD I0 on	N	N
Observation mode	POINTING	POINTING	CCD I1 on	N	N
[deg] Pointing RA	272.590151	272.569626623344	CCD I2 on	O2	Y
[deg] Pointing Dec	-31.781257	-31.76020568473843	CCD I3 on	O1	N
[deg] Pointing Roll	98.709401	98.85521577945605	CCD S0 on	N	N
[mm] SIM focus pos	-0.684267	-0.6828225247311905	CCD S1 on	Y	Y
[mm] SIM defocus	0	0.001444936568705701	CCD S2 on	Y	Y
[mm] SIM translation stage pos	-190.132523	-190.1425803651734	CCD S3 on	Y	Y
[mm] SIM translation stage offset	0	0.01005778216563158	CCD S4 on	Y	Y
[s] Observation start time (MET)	350440884.184000	350439583.52279	CCD S5 on	N	N
Observation start date	2009-02-08T00:40:18	2009-02-08T00:19:43	Number of optional ACIS chips dropped	1	1
[s] Observation end time (MET)	350451984.184000	350452341.18592	On-chip summing requested	N	N
Observation end date	2009-02-08T03:45:18	2009-02-08T03:52:21	Subarray requested	NONE	NONE
Read mode	TIMED	TIMED	Alternating exposures requested	N	N
			[s] Primary exposure time	0.000000	3.1

2.3 Aspect



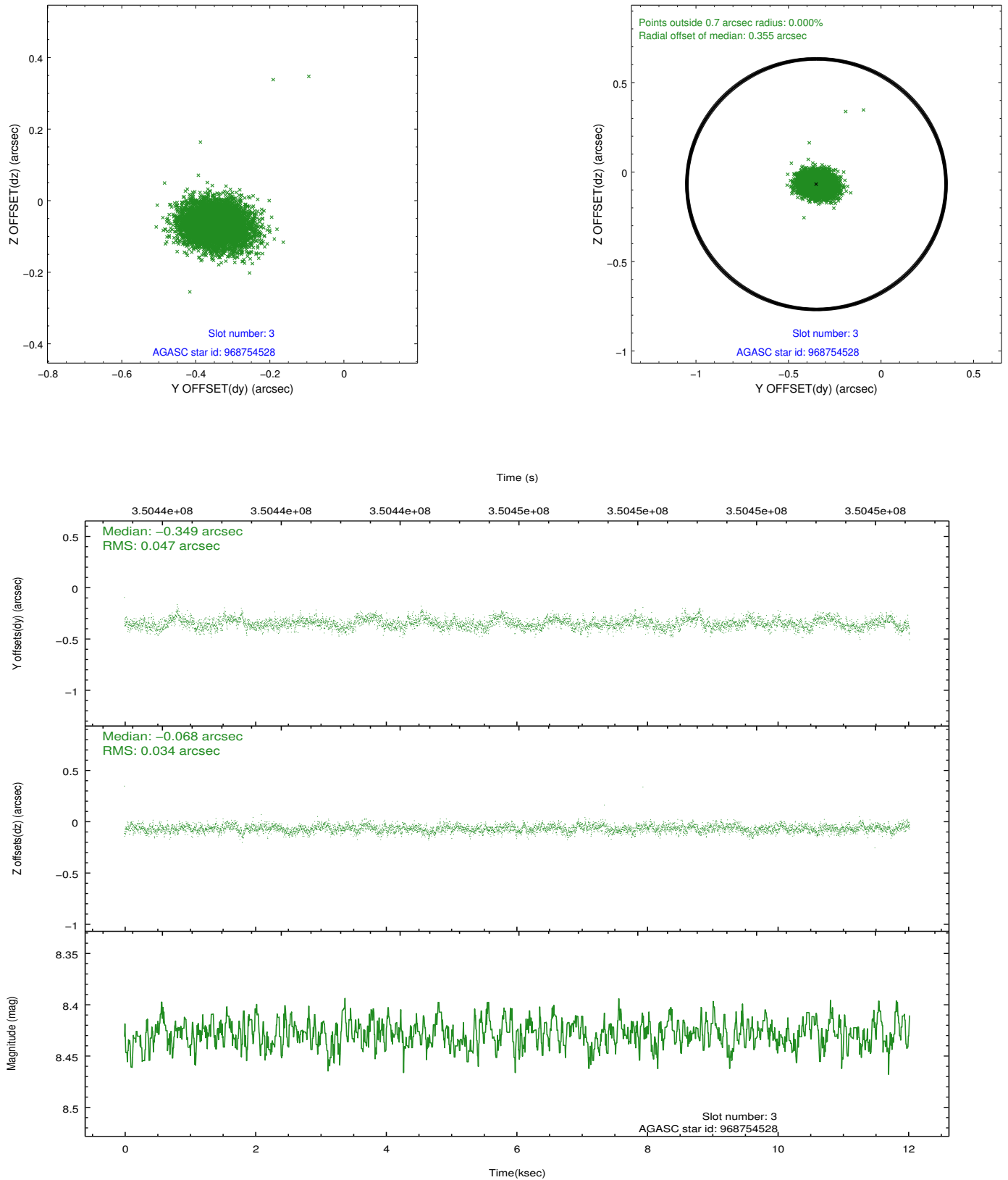


Slot Statistics

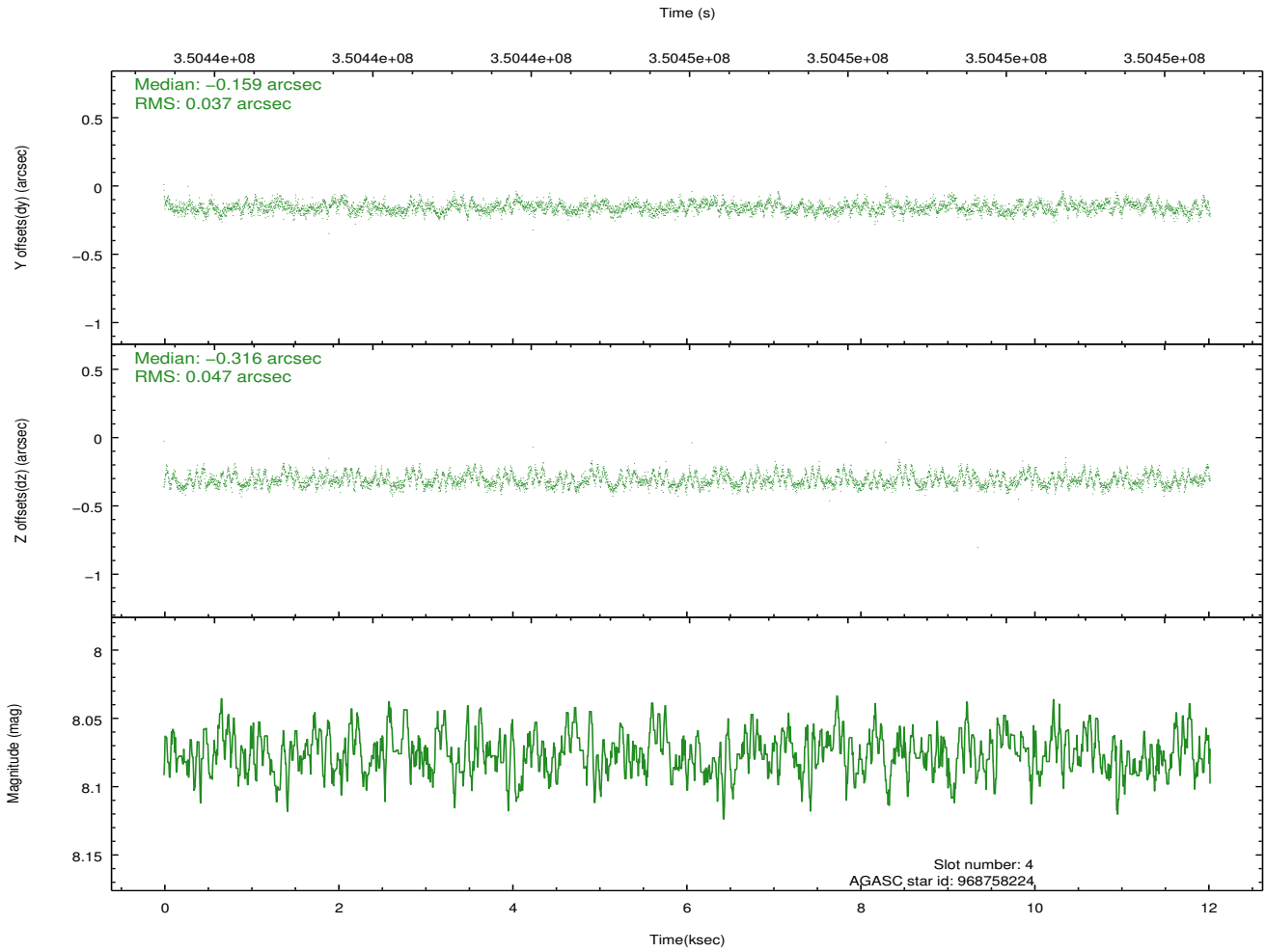
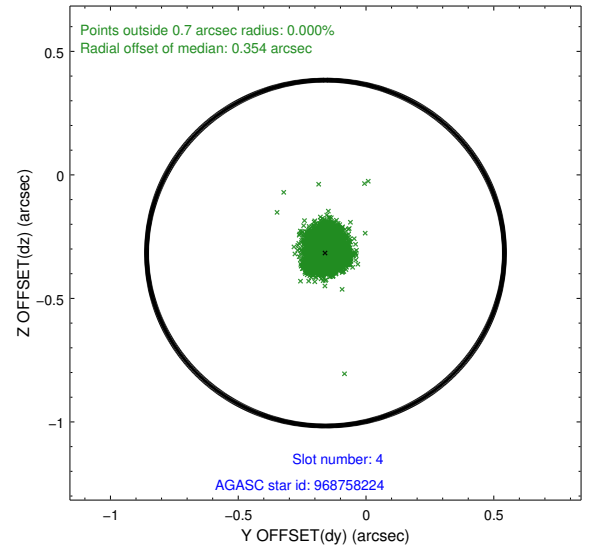
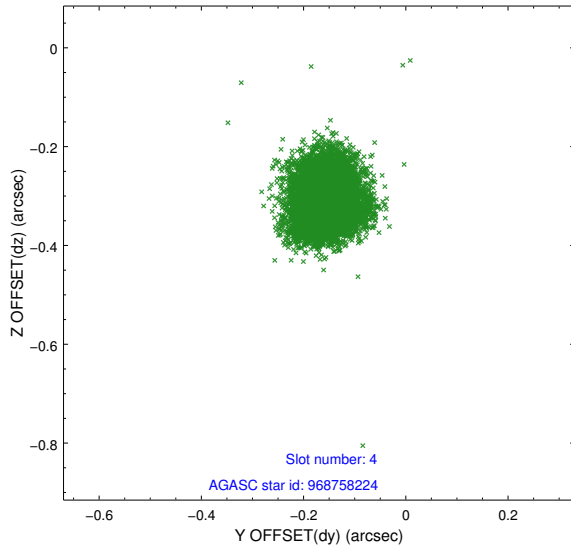
slot	status	id	mag	n_pts	med_dy	med_dz	dr1	dr2	ra	dec	mean_y	mean_z
0	FID	ACIS-S-2	6.89	2934	-0.071	-0.037	0.006	0.012	0.000000	0.000000	-766.92	-1738.45
1	FID	ACIS-S-4	6.97	2934	0.096	0.031	0.007	0.011	0.000000	0.000000	2146.37	169.60
2	FID	ACIS-S-6	7.10	2934	-0.054	0.013	0.009	0.015	0.000000	0.000000	395.67	807.50
3	GUIDE	968754528	8.43	5868	-0.349	-0.068	0.061	0.101	272.246255	-31.160036	2369.24	708.99
4	GUIDE	968758224	8.08	5867	-0.159	-0.316	0.063	0.100	271.897330	-31.668055	717.99	2037.55
5	GUIDE	969411232	7.95	5867	0.117	0.069	0.053	0.085	273.256998	-32.065996	-1326.95	-1854.36
6	GUIDE	969411968	9.27	5835	0.091	0.136	0.093	0.148	273.429737	-32.269837	-2135.28	-2258.64
7	GUIDE	969415768	9.13	5859	0.298	0.175	0.075	0.123	272.909685	-32.404195	-2365.01	-620.50

2.4 Star Slots

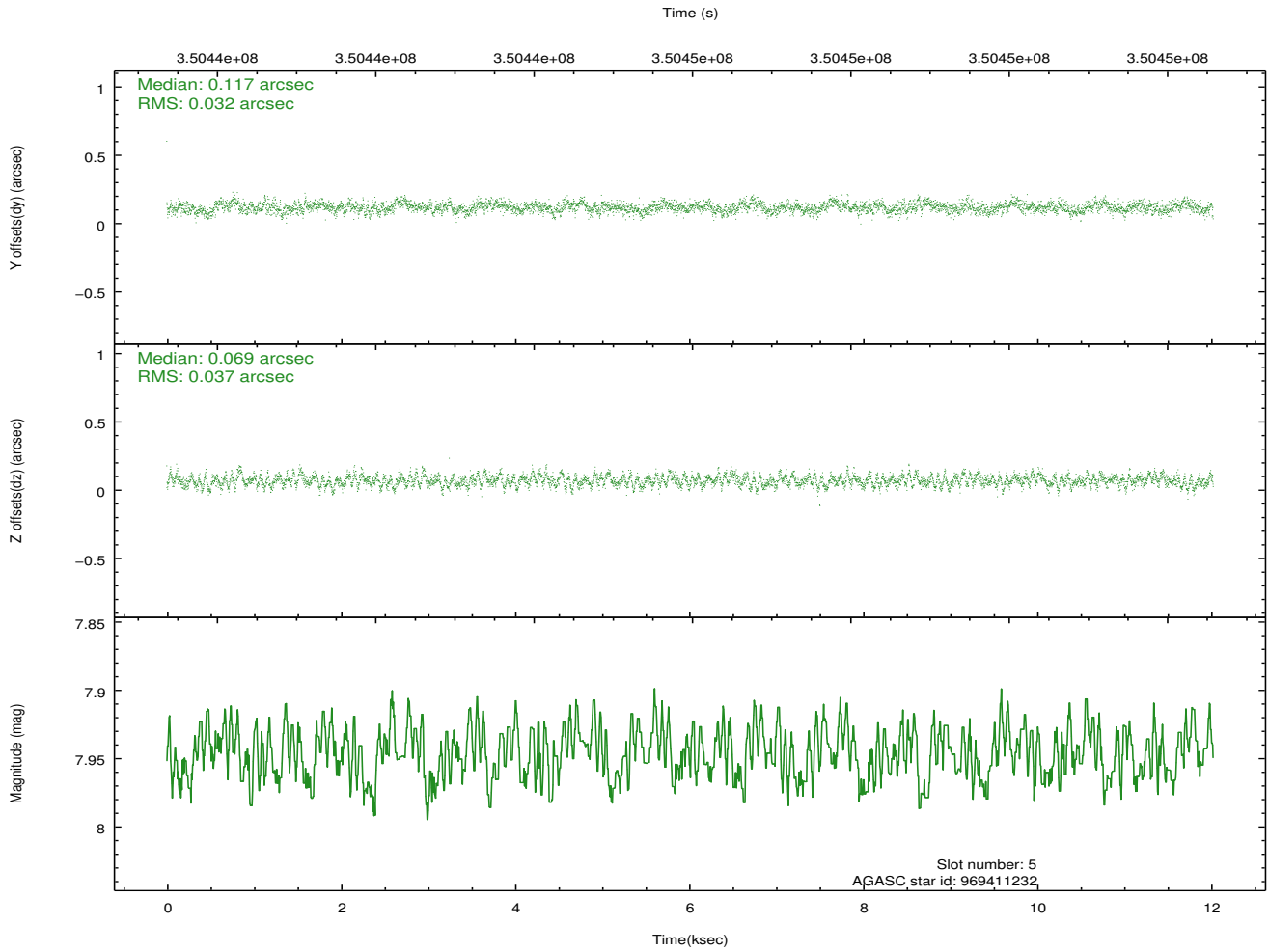
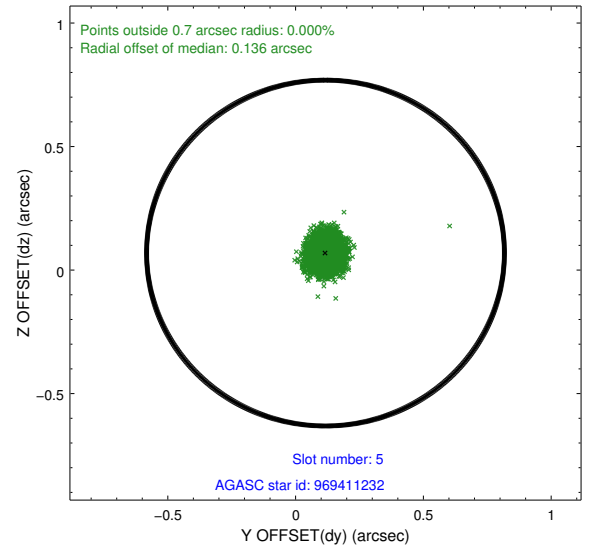
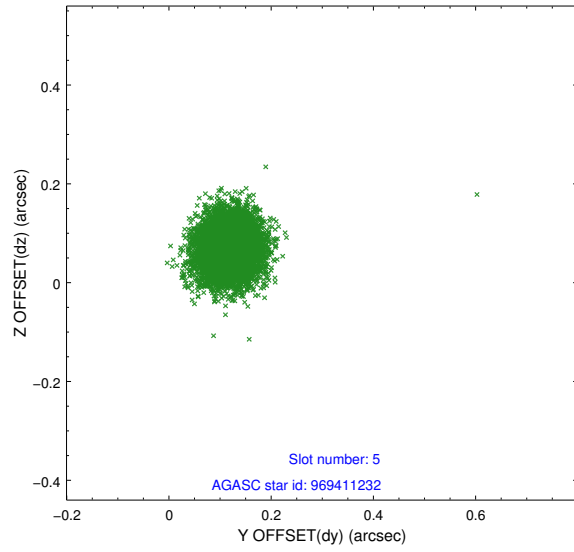
2.4.1 Slot 3



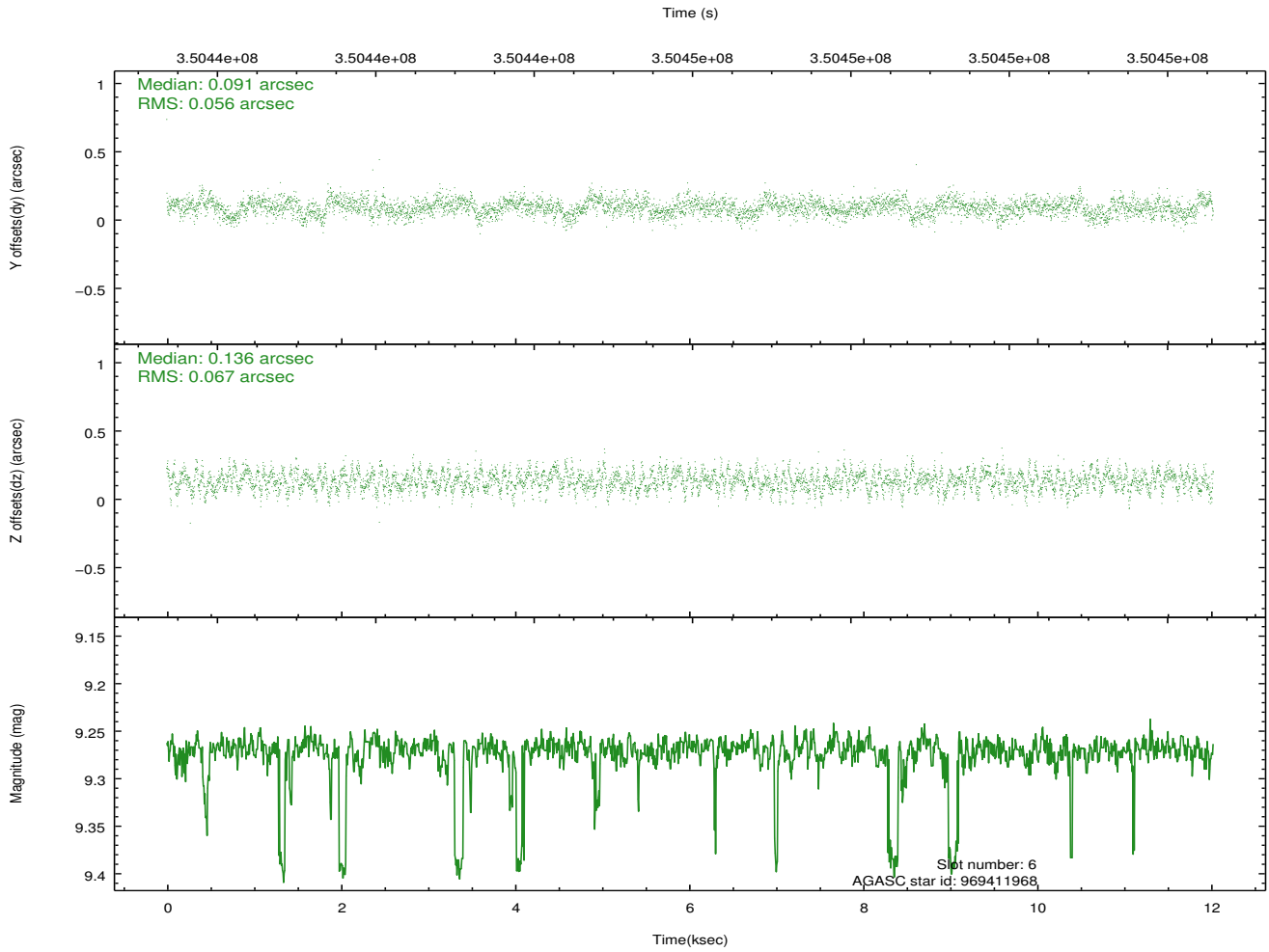
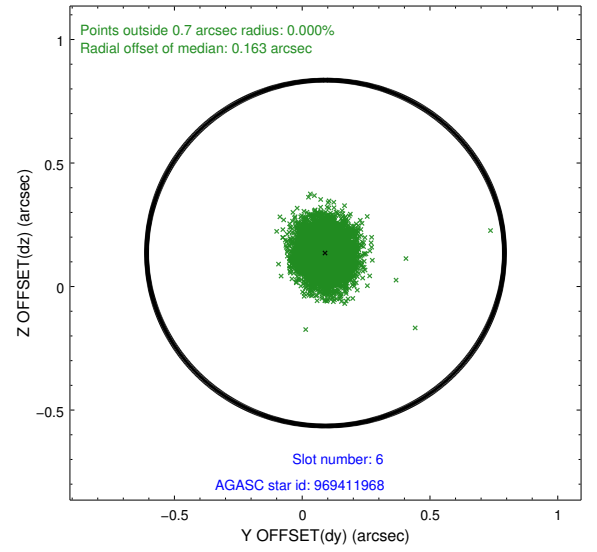
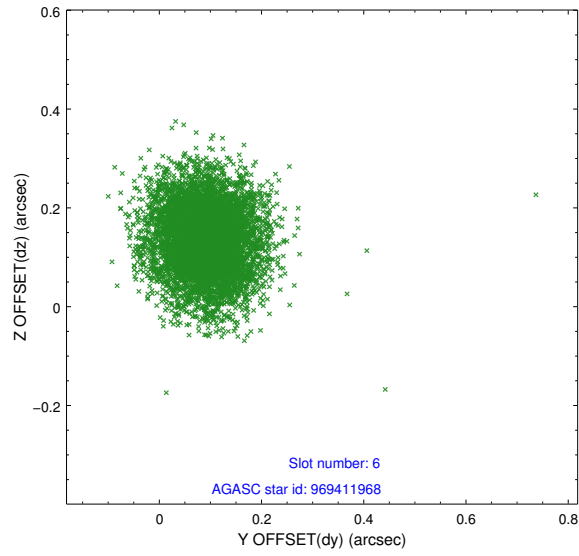
2.4.2 Slot 4



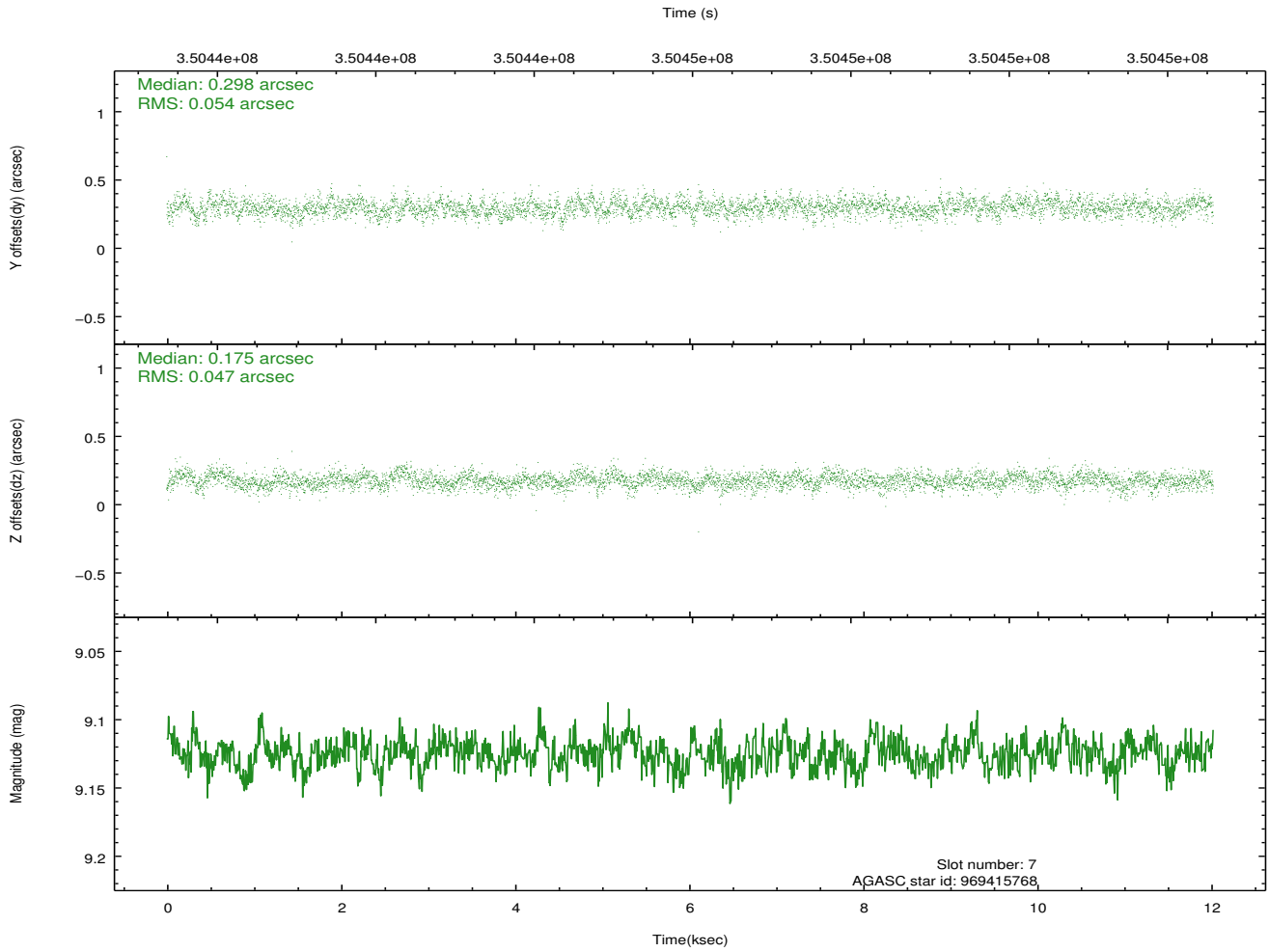
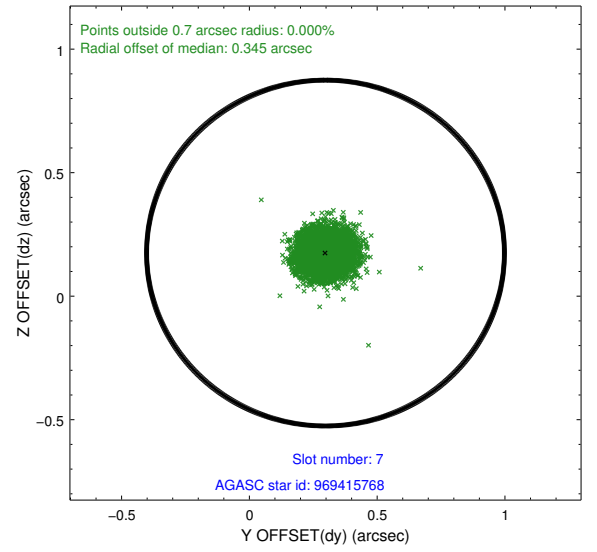
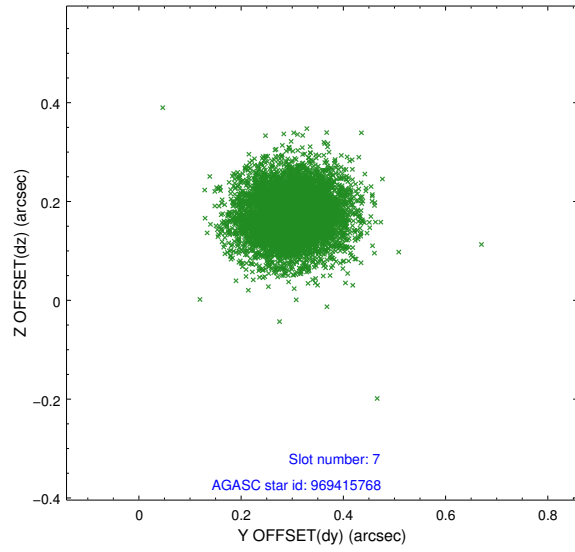
2.4.3 Slot 5



2.4.4 Slot 6

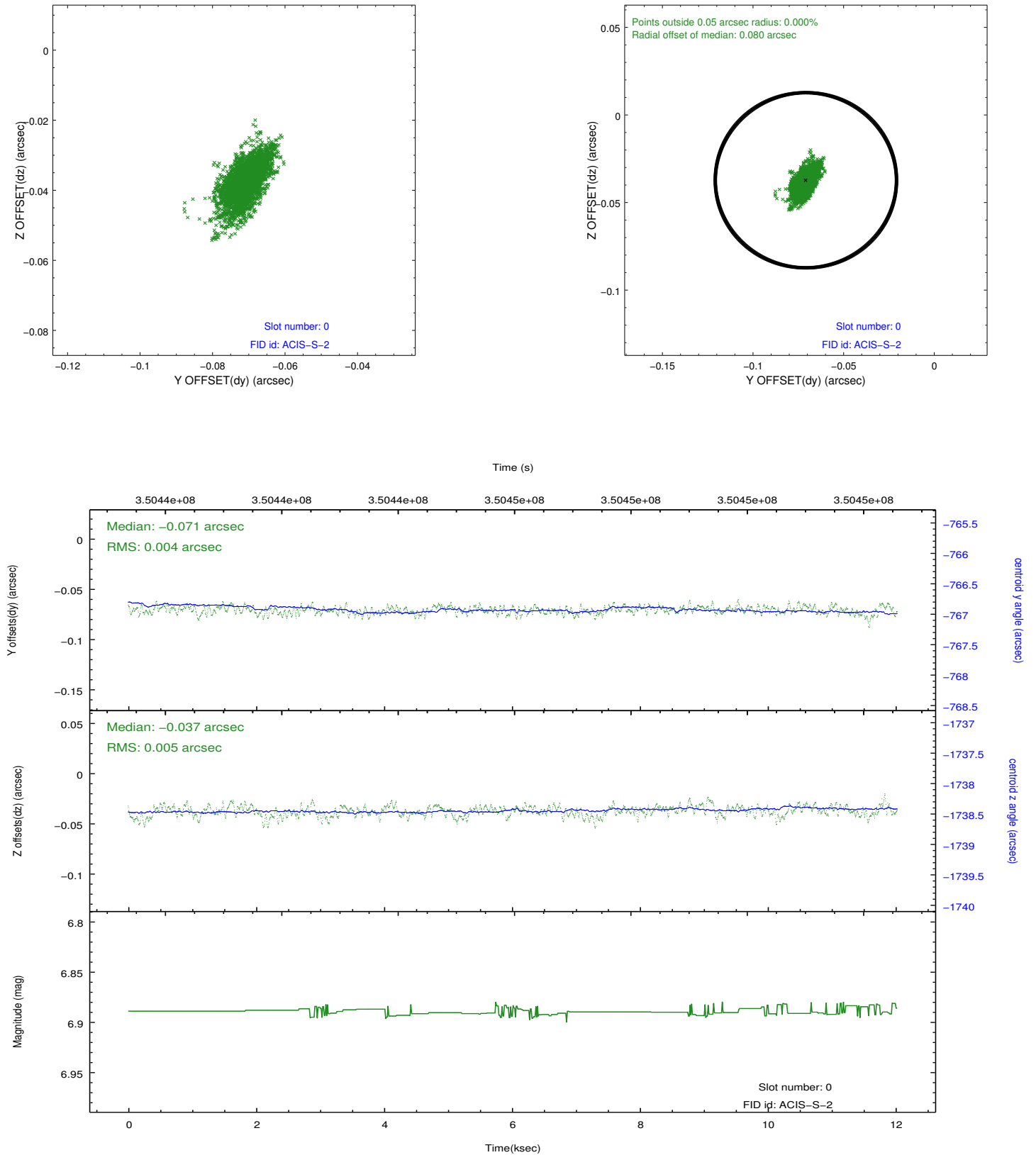


2.4.5 Slot 7

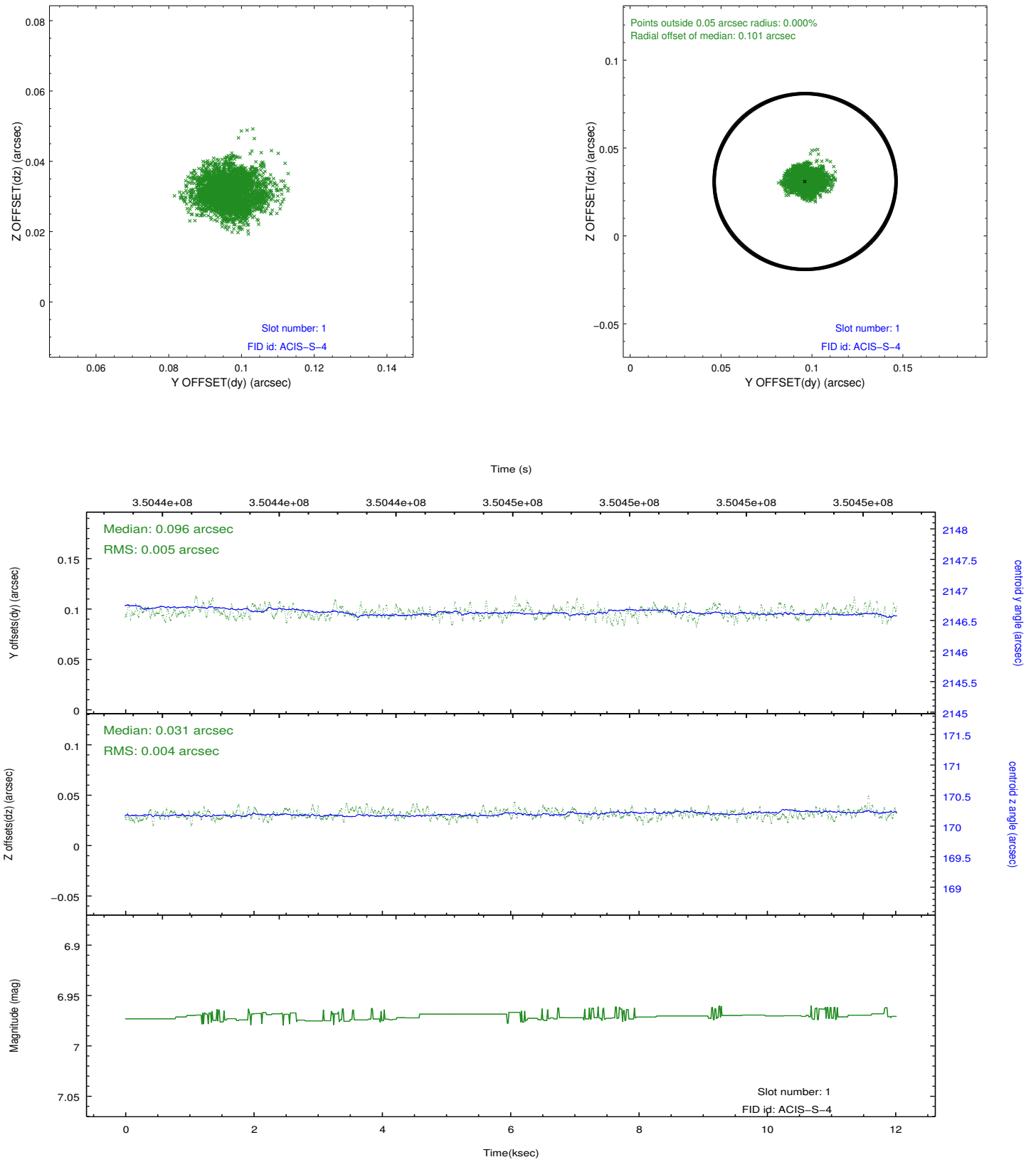


2.5 FID Slots

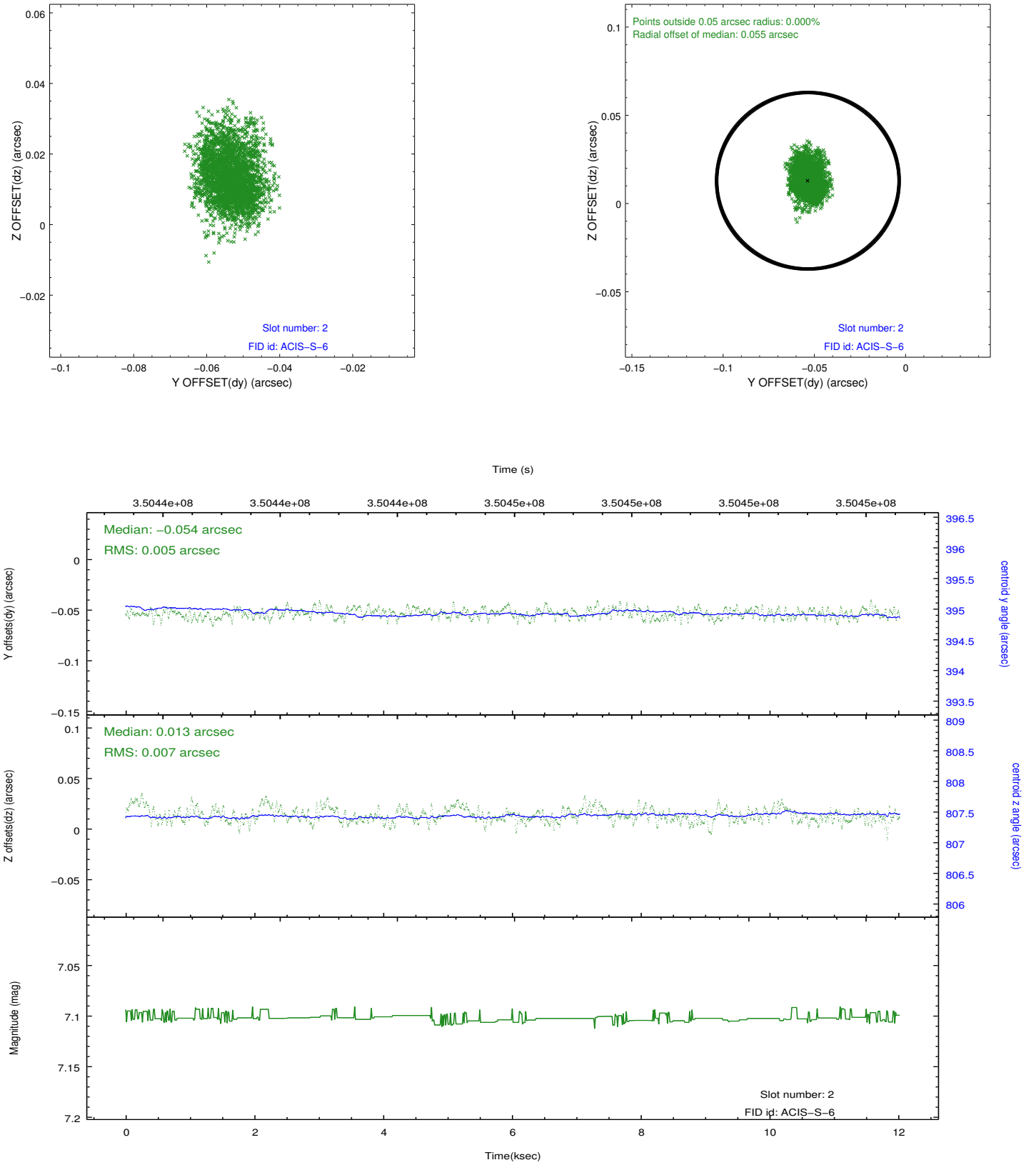
2.5.1 Slot 0



2.5.2 Slot 1



2.5.3 Slot 2



A Summary

A.1 Status

V&V Scientist	Beth Sundheim
V&V Date (YYYY-MM-DD)	2012.06.06
V&V Edition	1
V&V Disposition and Status	OK
V&V Charge Time	11.1321

A.2 Comments