

V&V Reference Report

L2 ASCDS Version : 8.4.4

Observation 10838 - L2 Version 3
Chandra X-Ray Center

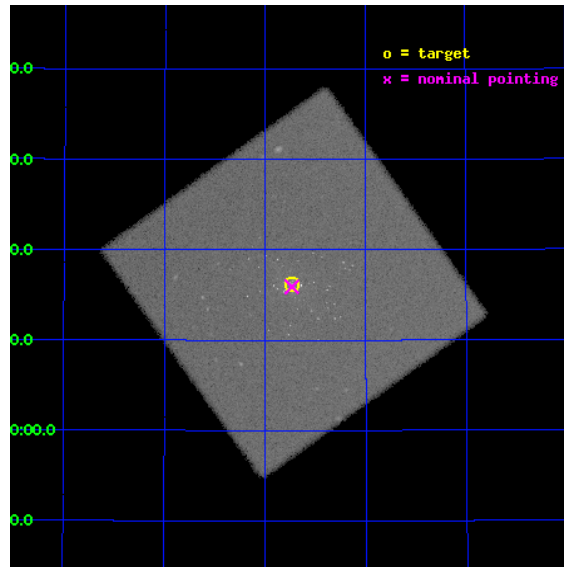
L2 Processing Date : Aug 13 2012

Contents

1	Front	2
2	OBI	3
2.1	OBI	3
2.1.1	Images	3
2.1.2	Parameters	4
2.1.3	Events	4
2.2	Compared Parameters	5
2.3	Aspect	6
2.4	Star Slots	9
2.4.1	Slot 3	9
2.4.2	Slot 4	10
2.4.3	Slot 5	11
2.4.4	Slot 6	12
2.4.5	Slot 7	13
2.5	FID Slots	14
2.5.1	Slot 0	14
2.5.2	Slot 1	15
2.5.3	Slot 2	16
A	Summary	17
A.1	Status	17
A.2	Comments	17

1 Front

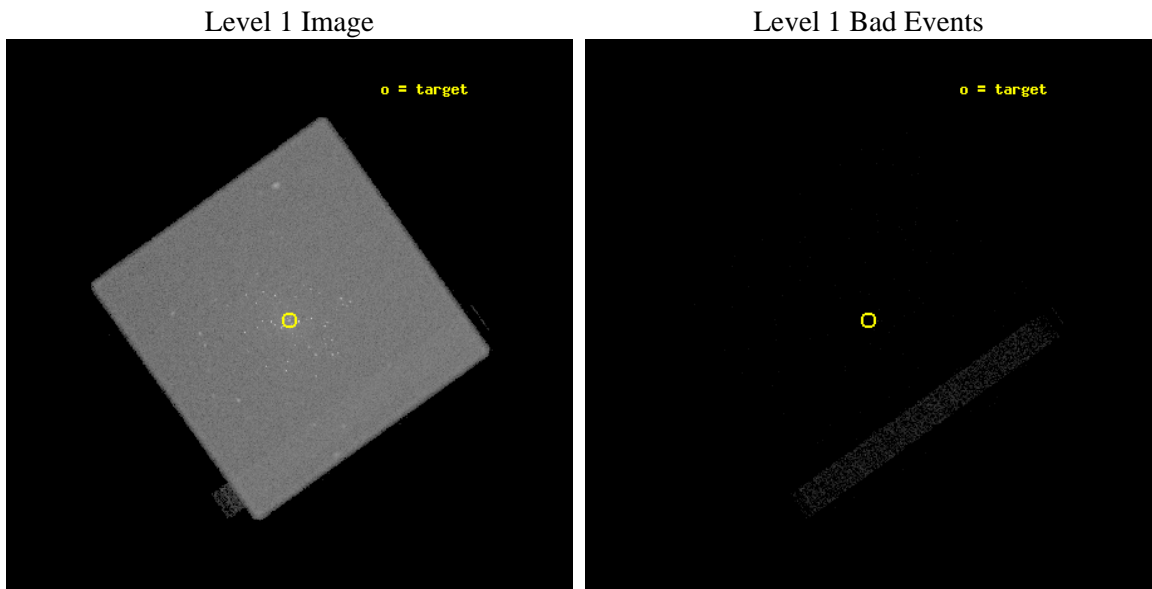
seq_num	300237	Sequence number
obs_id	10838	Observation id
title	Resolving short supersoft source states of optical novae in the core of M31	Proposal title
observer	Dr. Wolfgang Pietsch	Principal investigator
object	M31	Source name
ra_targ	10.684583	Observer's specified target RA [deg]
dec_targ	41.269278	Observer's specified target Dec [deg]
ra_nom	10.683304957692	Nominal RA [deg]
dec_nom	41.265207939437	Nominal Dec [deg]
roll_nom	279.40536505922	Nominal Roll [deg]
revision	3	Processing version of data
ontime	10154.931752205	[s]
livetime	10041.791854968	Ontime multiplied by DTCOR
l2events	692497	Number of level 2 events



2 OBI

2.1 OBI

2.1.1 Images



2.1.2 Parameters

obi_num	1	Obi number	sched_exp_time	10000.000000	[s] Scheduled observation exposure time
ascdsver	8.4.5	Processing system revision	ontime	10154.931752205	[s]
caldsver	4.5.1.1	 	l1events	1093659	Number of level 1 events
date	2012-08-13T01:40:20	Date and time of file creation			
revision	3	Processing version of data			

2.1.3 Events

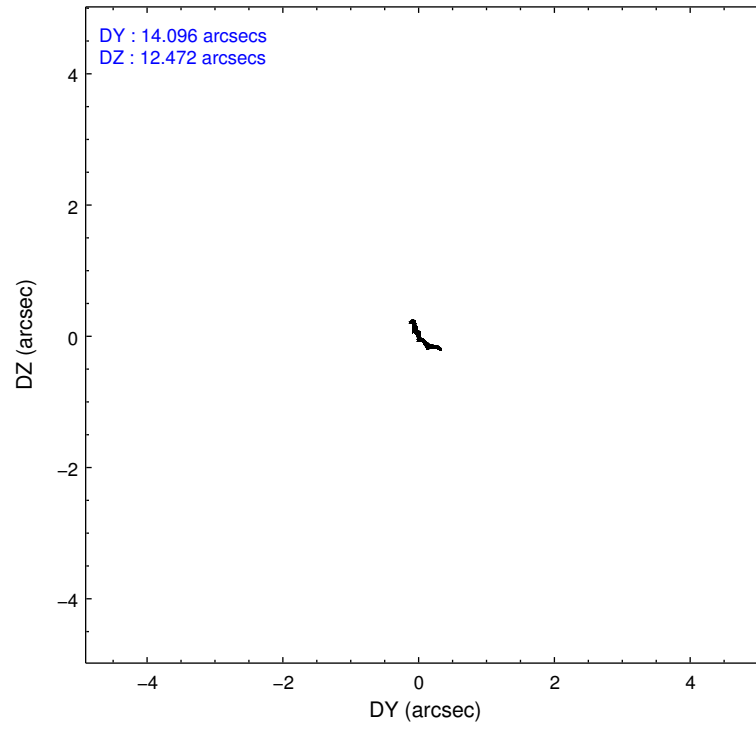
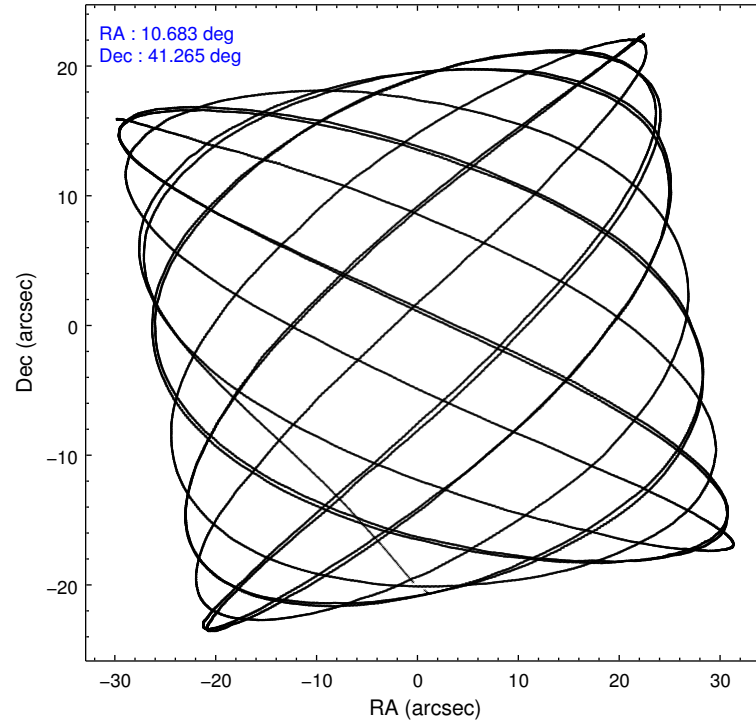
Level 1 Events

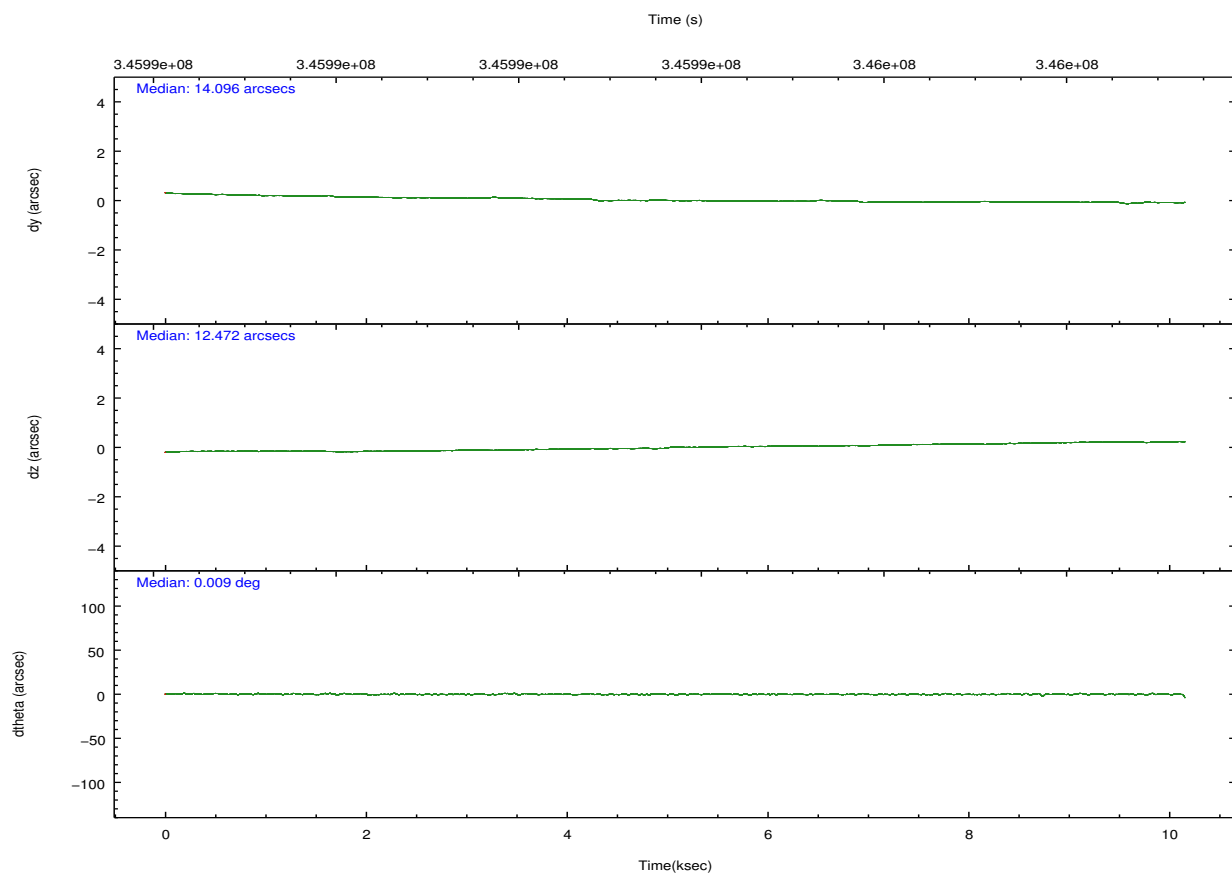
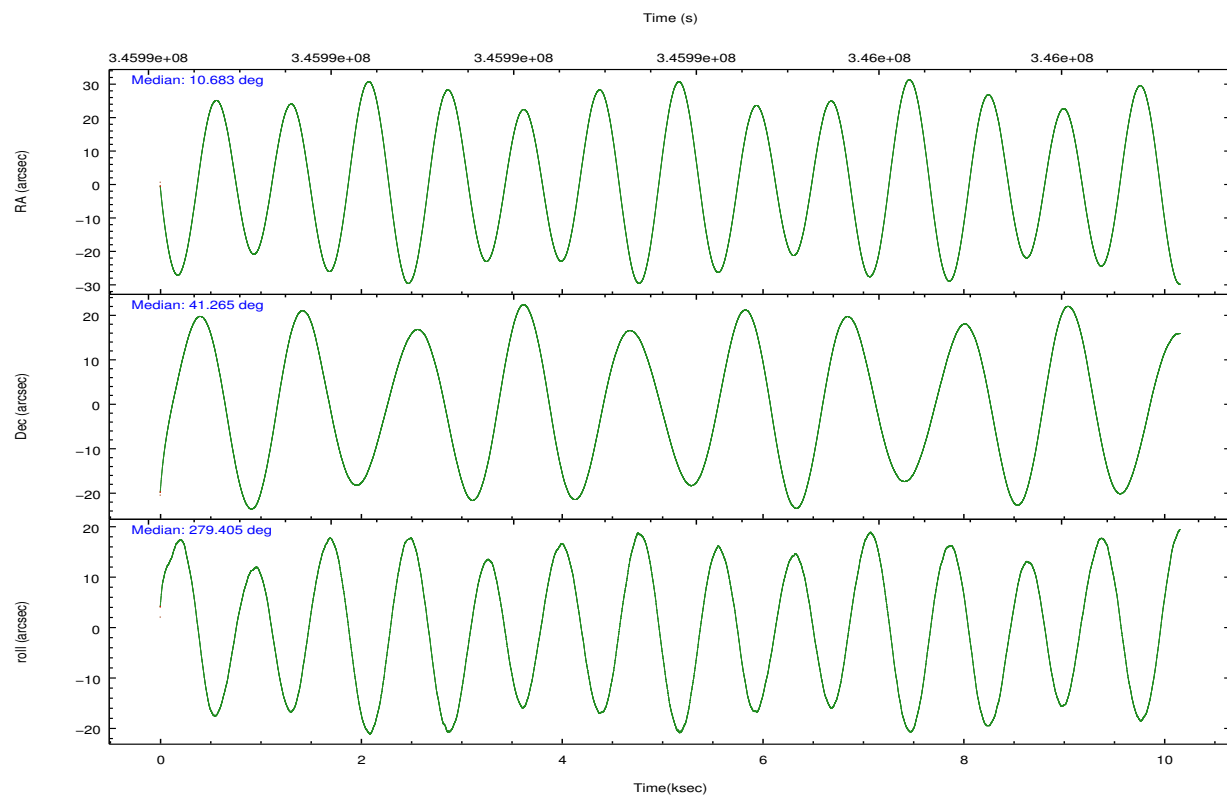
	segment 0
level 1 events	1093659
rejected events	89891
rejected %	8%

2.2 Compared Parameters

Parameter	Planned	Actual	Parameter	Planned	Actual
Instrument	HRC	HRC	Obspar format version number	7	7
Detector	HRC-I	HRC-I	Obspar file type	PREDICTED	ACTUAL
Grating	NONE	NONE	Obspar update status	NONE	UPDATED
Data mode	OBSERVING	OBSERVING			
Observation mode	POINTING	POINTING			
[deg] Pointing RA	10.659773	10.68330495769206			
[deg] Pointing Dec	41.285753	41.26520793943737			
[deg] Pointing Roll	279.516375	279.4053650592246			
[s] Window start time (MET)	345859265.184000	345859265.184000			
[s] Window stop time (MET)	346118405.184000	346118405.184000			
[mm] SIM focus pos	-1.040293	-1.038866356238299			
[mm] SIM defocus	0	0.001426264420575141			
[mm] SIM translation stage pos	126.985494	126.9829799899862			
[mm] SIM translation stage offset	0	0.002508901615314585			
[s] Observation start time (MET)	345988793.184000	345987848.40247			
Observation start date	2008-12-18T11:58:48	2008-12-18T11:44:08			
[s] Observation end time (MET)	345998793.184000	345999526.22804			
Observation end date	2008-12-18T14:45:28	2008-12-18T14:58:46			

2.3 Aspect



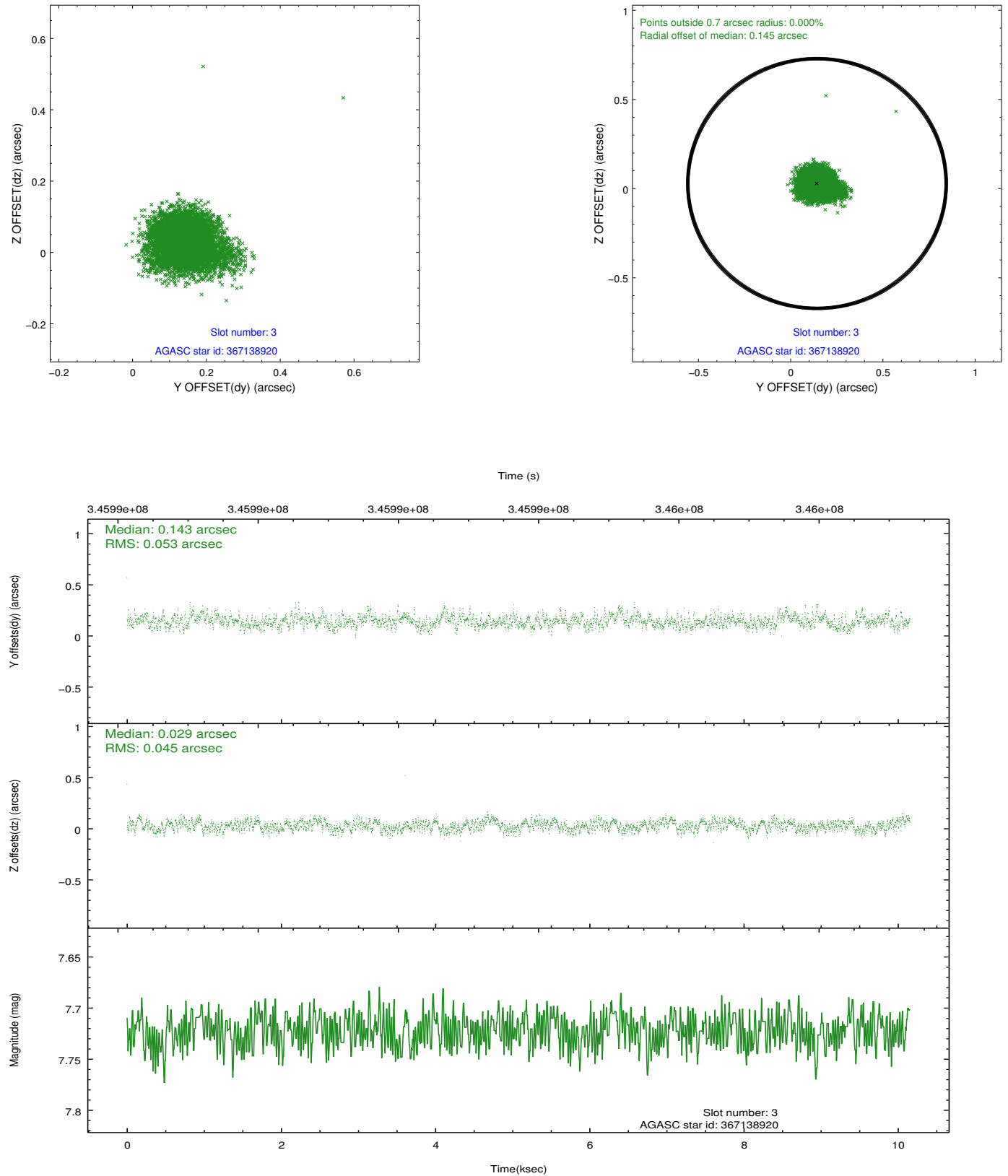


Slot Statistics

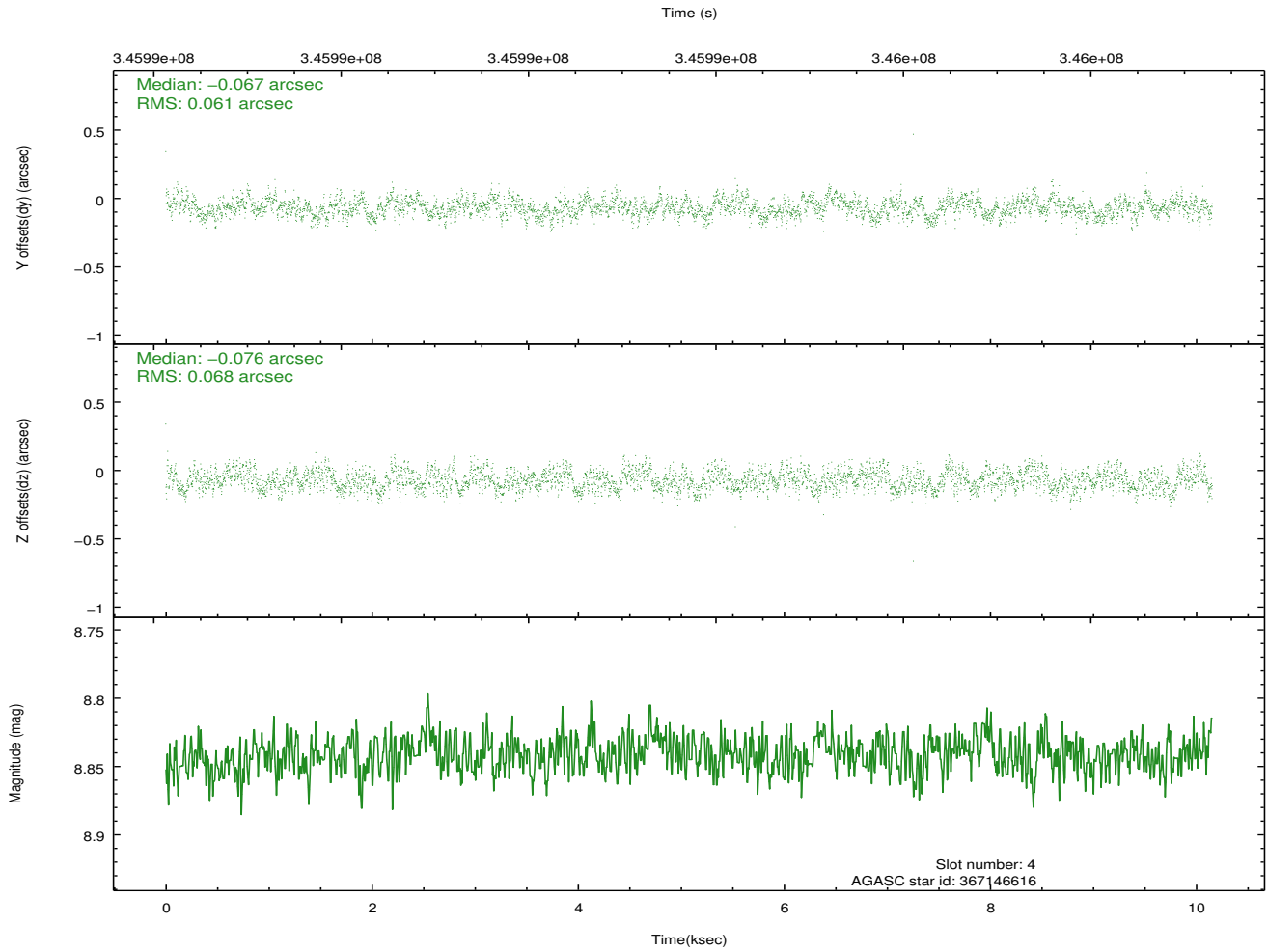
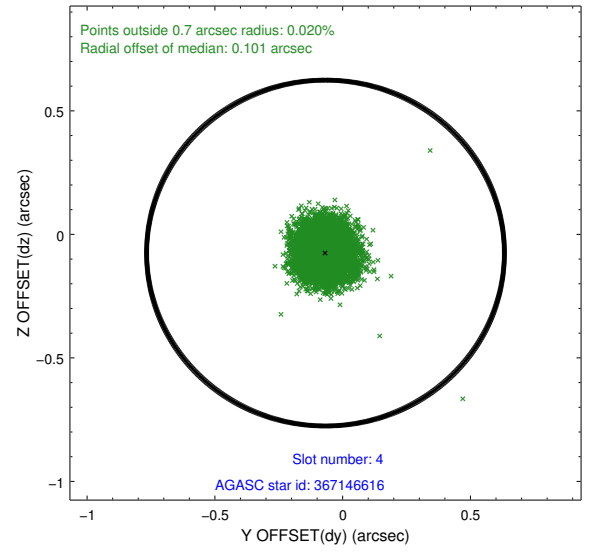
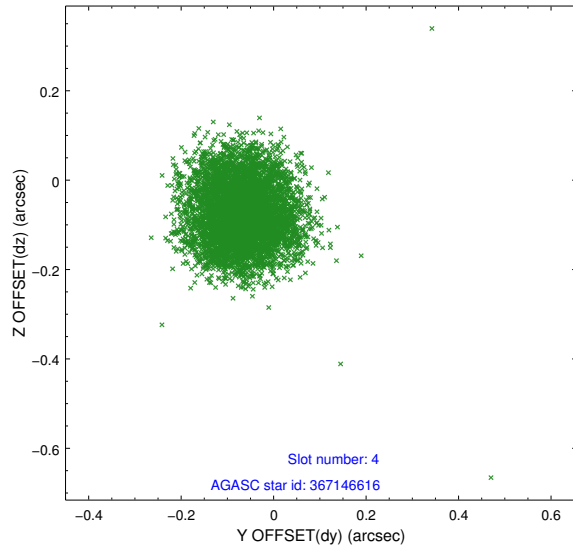
slot	status	id	mag	n_pts	med_dy	med_dz	dr1	dr2	ra	dec	mean_y	mean_z
0	FID	HRC-I-1	7.00	2478	-0.072	0.009	0.008	0.015	0.000000	0.000000	-770.00	-1300.47
1	FID	HRC-I-2	7.04	2478	0.272	-0.175	0.006	0.010	0.000000	0.000000	842.67	-1302.75
2	FID	HRC-I-3	7.09	2478	-0.081	0.077	0.006	0.011	0.000000	0.000000	-1198.14	1003.64
3	GUIDE	367138920	7.72	4955	0.143	0.029	0.073	0.118	11.513485	40.808909	2067.60	2013.36
4	GUIDE	367146616	8.84	4953	-0.067	-0.076	0.099	0.151	11.418645	41.190163	671.17	1972.76
5	GUIDE	367148872	7.24	4954	0.074	0.021	0.074	0.120	10.505940	40.688258	2052.77	-769.23
6	GUIDE	367663272	9.28	4947	-0.135	-0.039	0.107	0.187	10.656279	41.699429	-1469.39	236.22
7	GUIDE	367674552	8.85	4953	-0.016	0.064	0.078	0.127	11.016238	41.570845	-855.26	1117.33

2.4 Star Slots

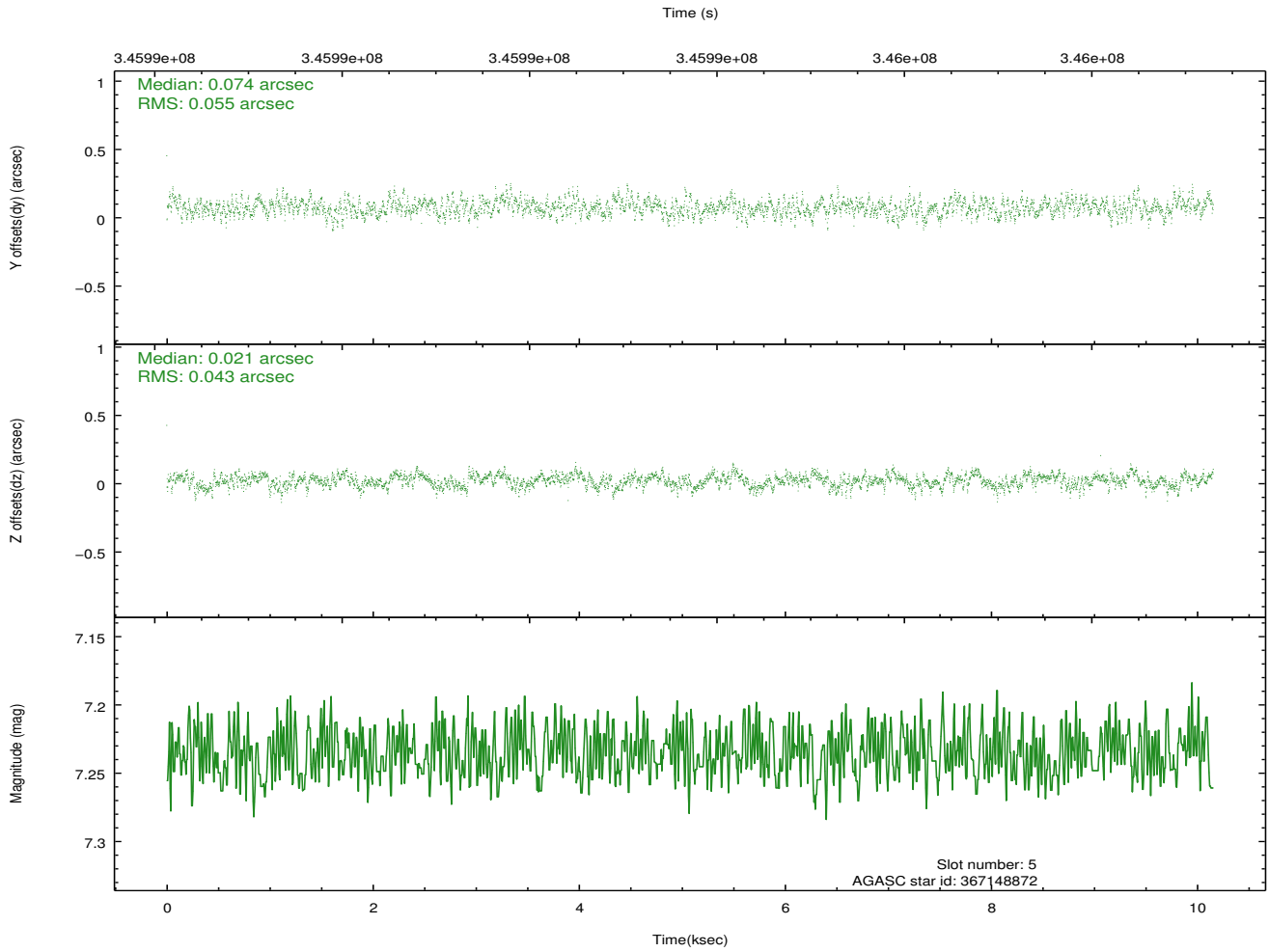
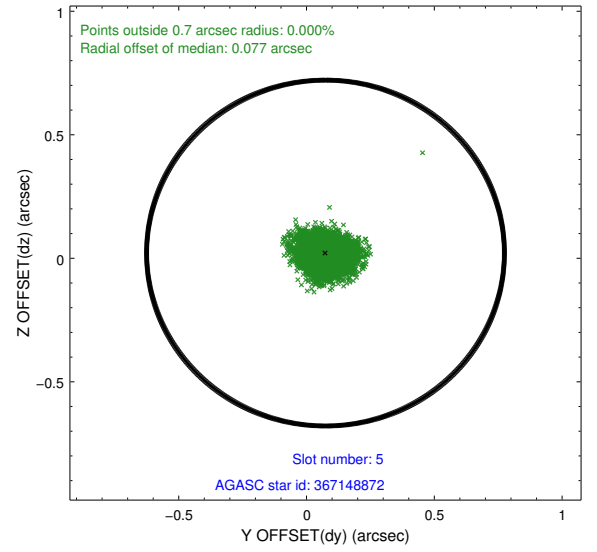
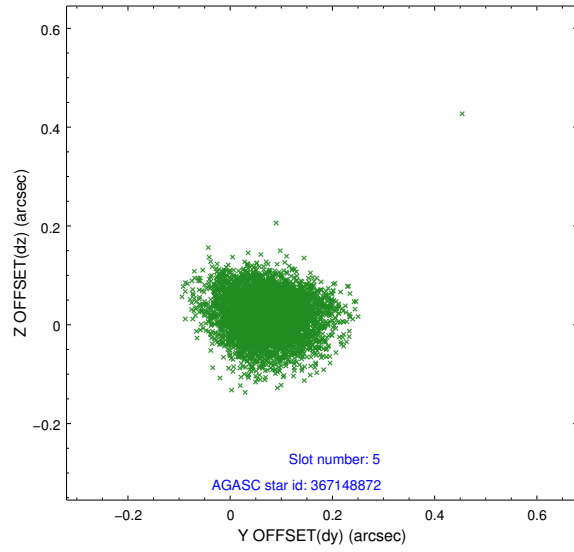
2.4.1 Slot 3



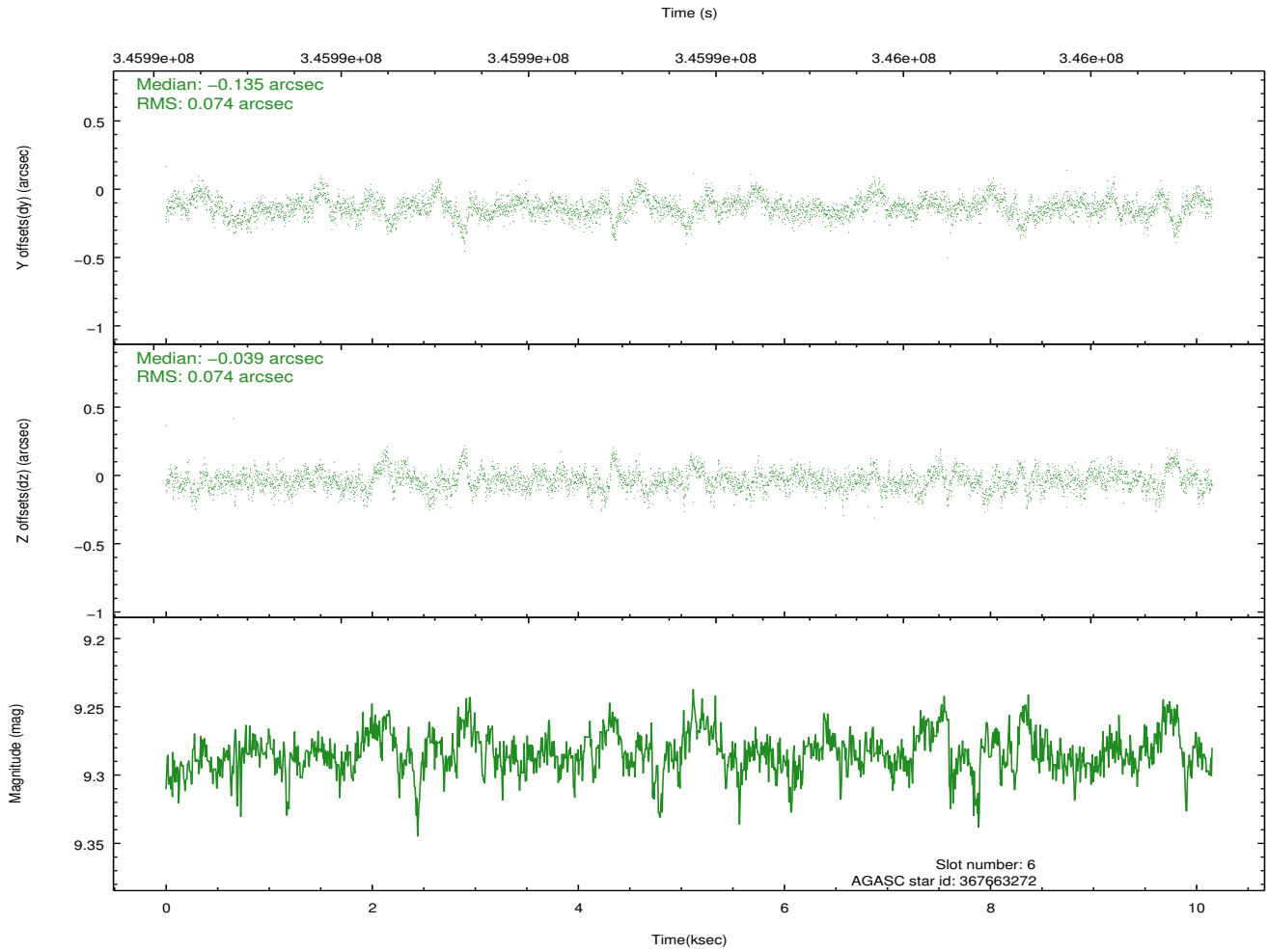
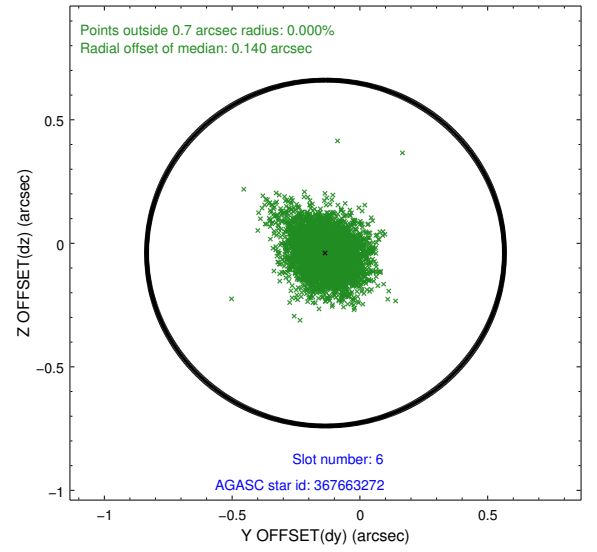
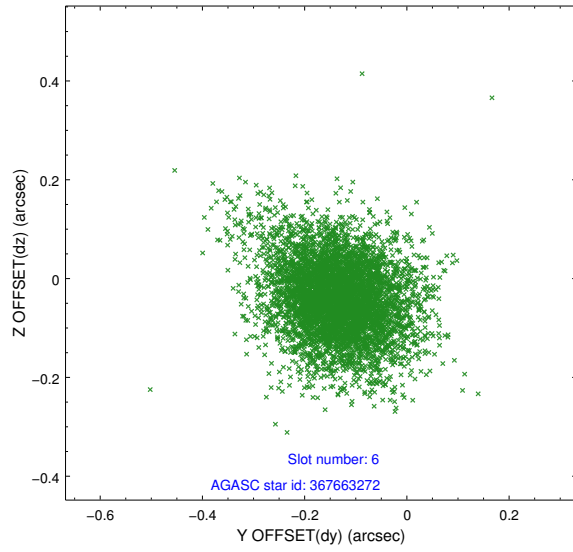
2.4.2 Slot 4



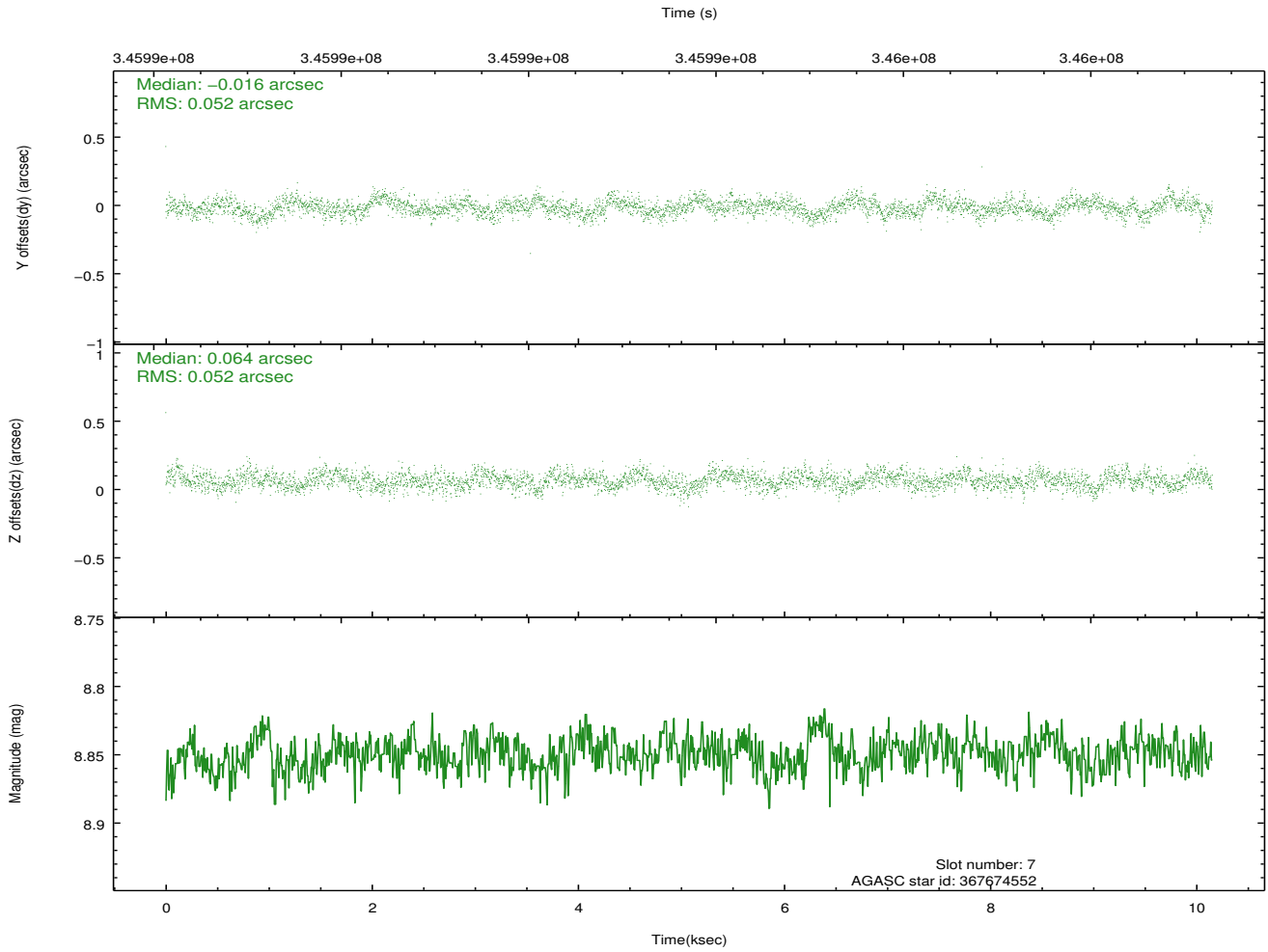
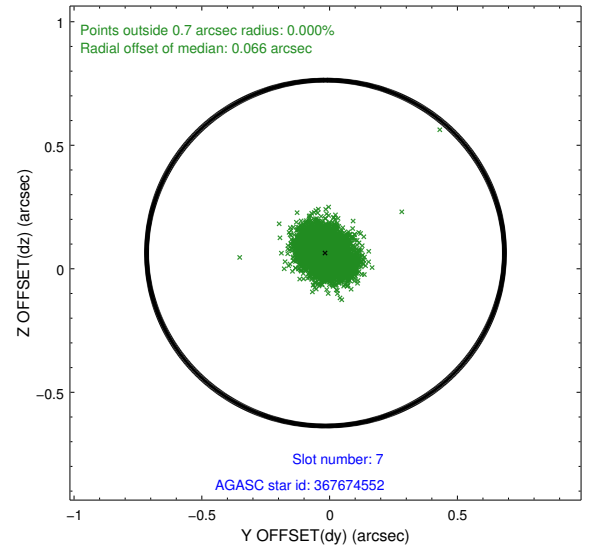
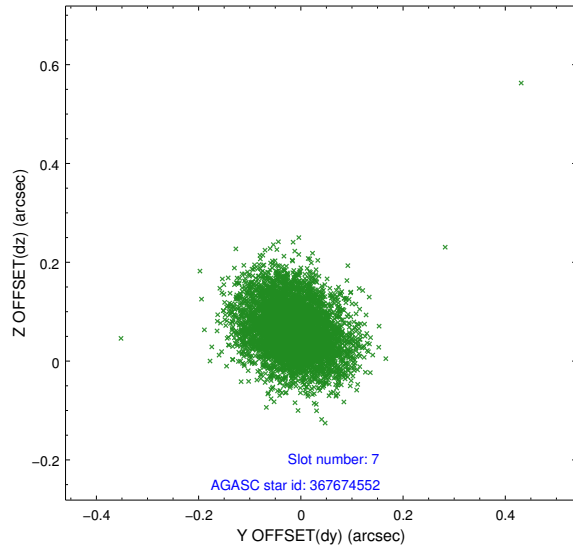
2.4.3 Slot 5



2.4.4 Slot 6

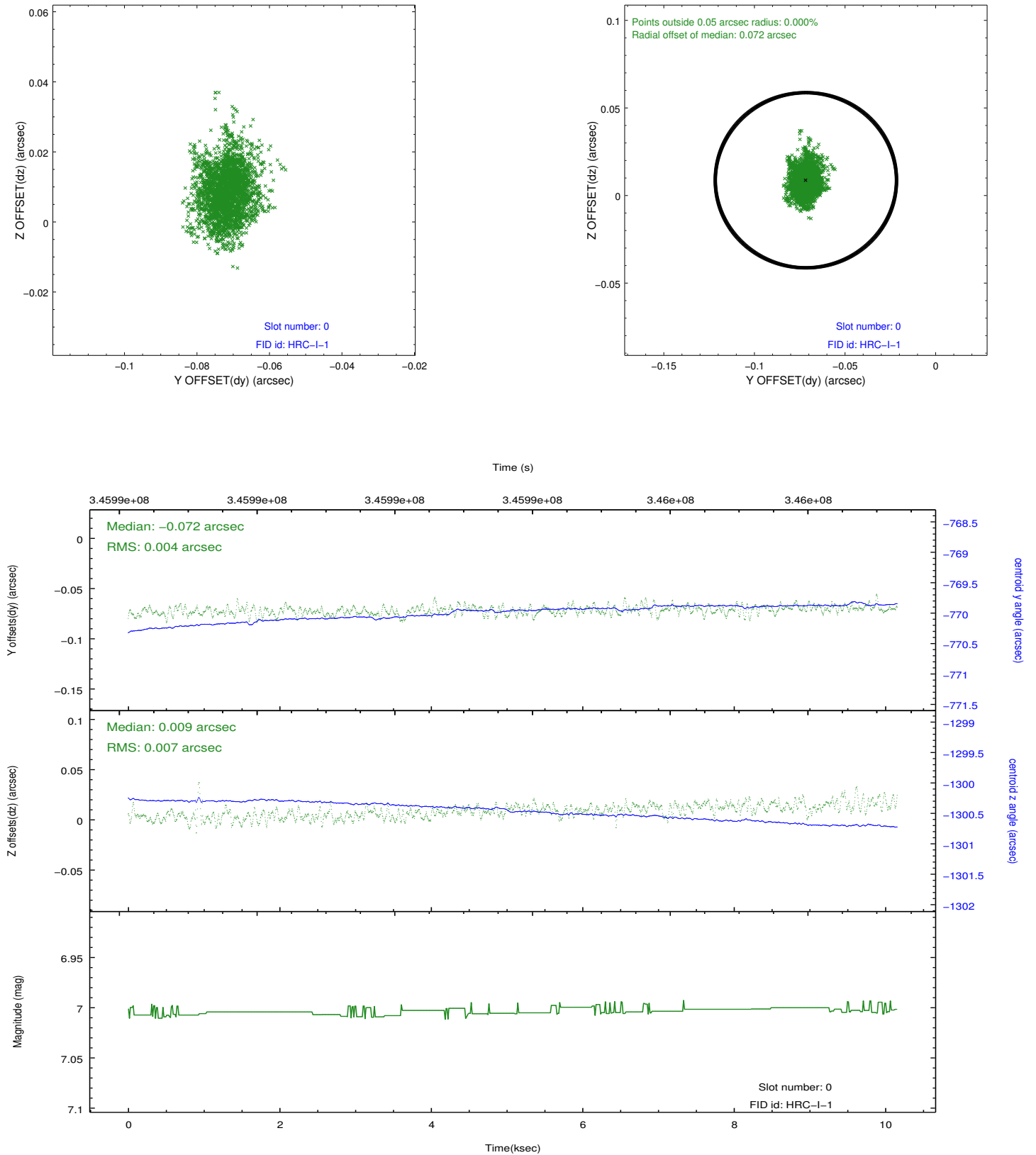


2.4.5 Slot 7

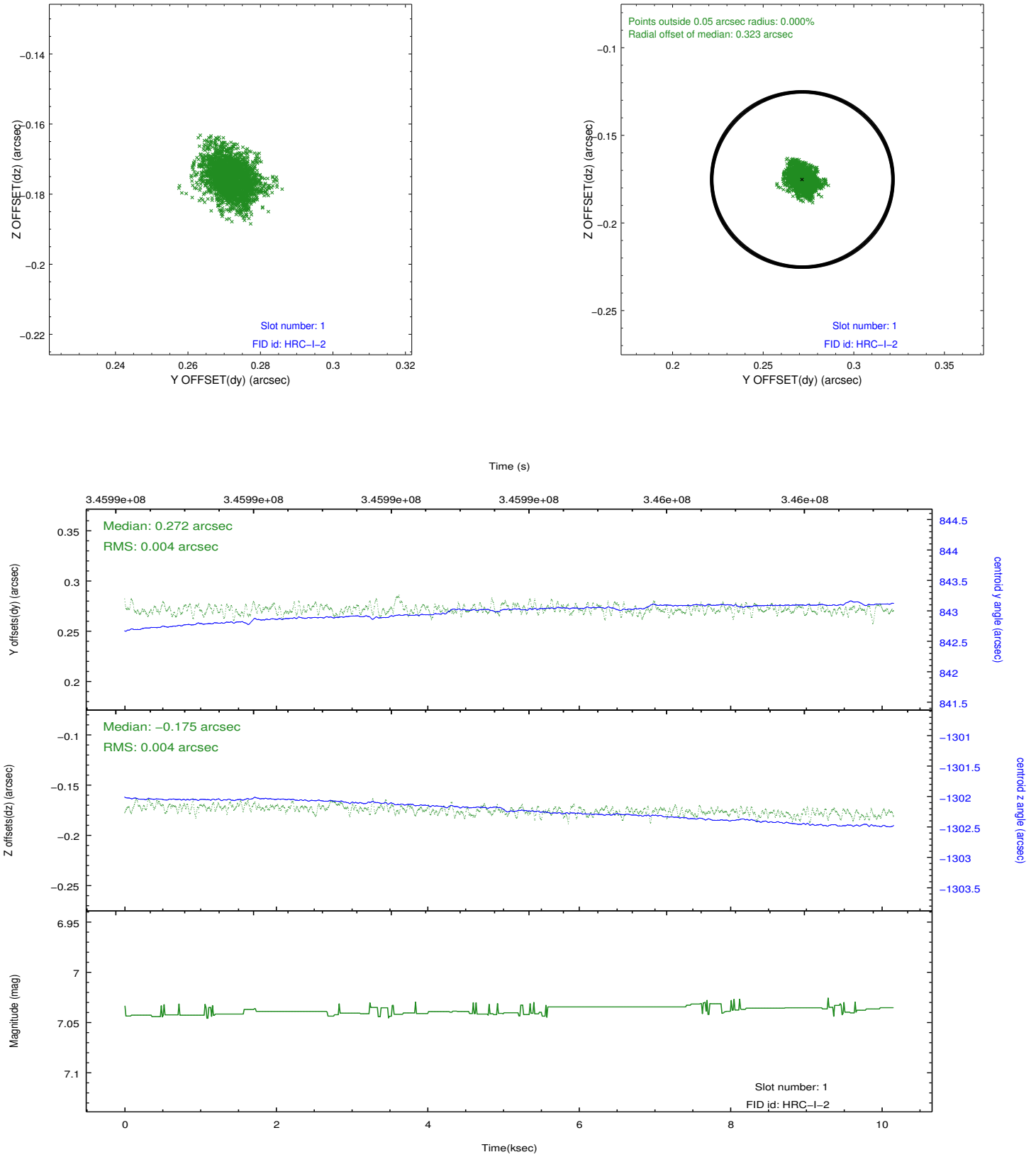


2.5 FID Slots

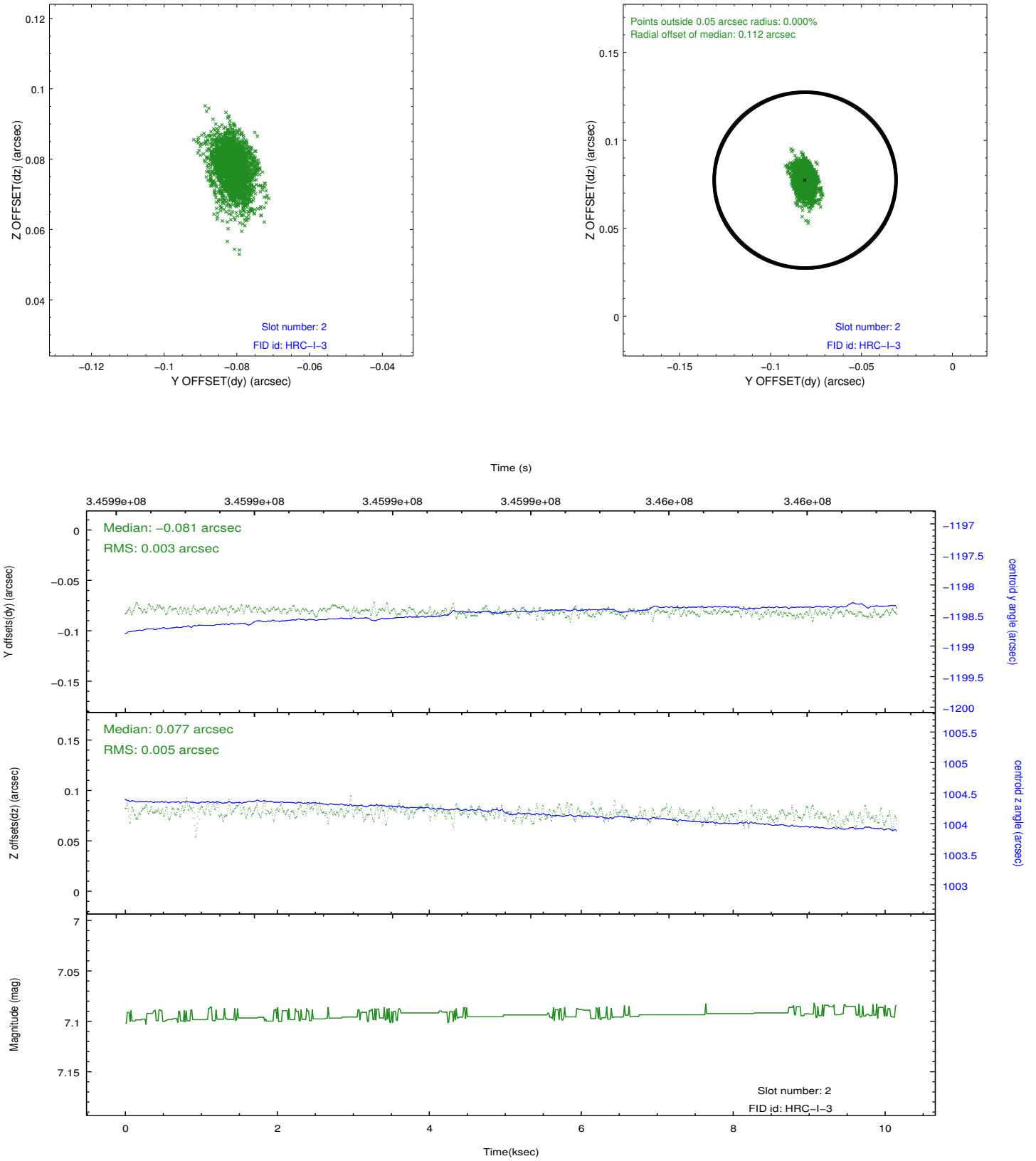
2.5.1 Slot 0



2.5.2 Slot 1



2.5.3 Slot 2



A Summary

A.1 Status

V&V Scientist	Beth Sundheim
V&V Date (YYYY-MM-DD)	2012.08.20
V&V Edition	1
V&V Disposition and Status	OK
V&V Charge Time	10.1549317

A.2 Comments

Joint proposal with XMM.

Window preference met.