

V&V Reference Report

L2 ASCDS Version : 8.4.4

Observation 9915 - L2 Version 2
Chandra X-Ray Center

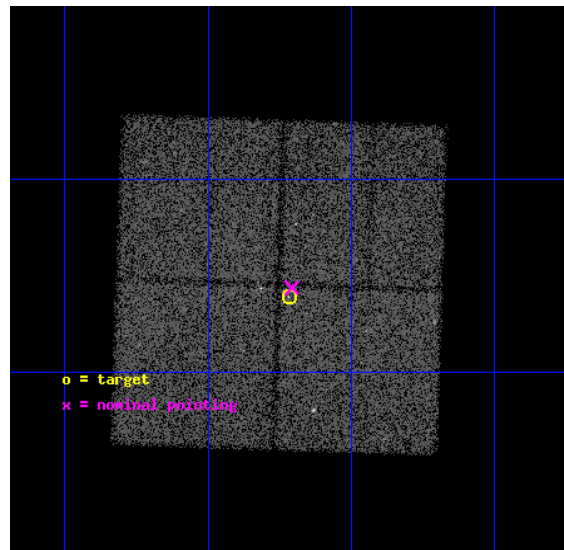
L2 Processing Date : May 21 2012

Contents

1	Front	2
2	OBI	3
2.1	OBI	3
2.1.1	Images	3
2.1.2	Bias	3
2.1.3	Parameters	4
2.1.4	Events	4
2.2	Compared Parameters	5
2.3	Aspect	6
2.4	Star Slots	9
2.4.1	Slot 3	9
2.4.2	Slot 4	10
2.4.3	Slot 5	11
2.4.4	Slot 6	12
2.4.5	Slot 7	13
2.5	FID Slots	14
2.5.1	Slot 0	14
2.5.2	Slot 1	15
2.5.3	Slot 2	16
A	Summary	17
A.1	Status	17
A.2	Comments	17

1 Front

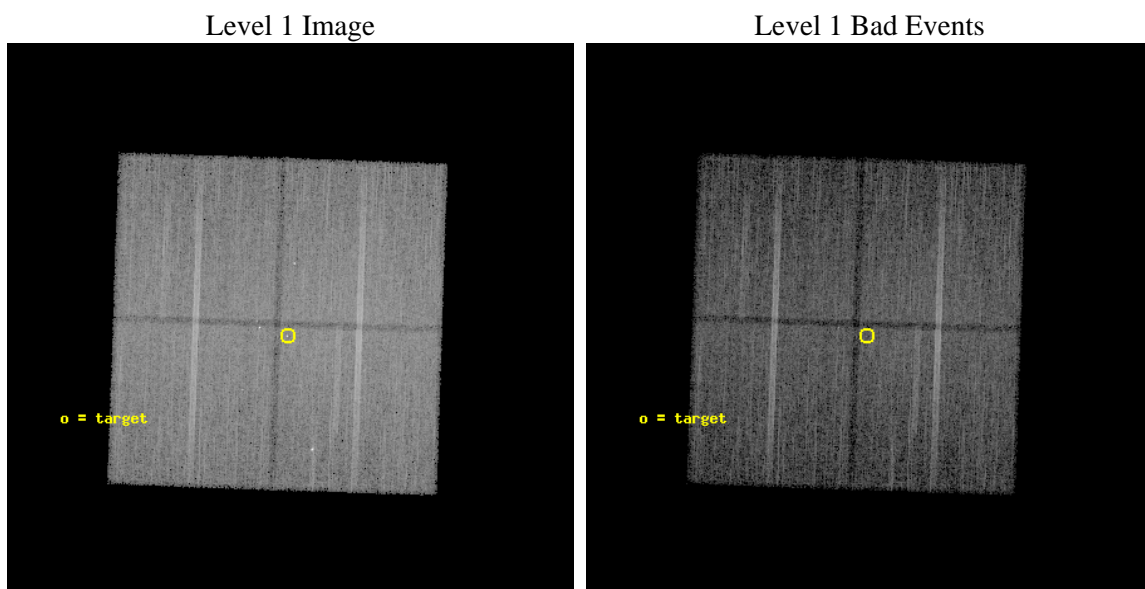
seq_num	200531	Sequence number
obs_id	9915	Observation id
title	ToO Studies with CXO of Pre-Main Sequence Stars Undergoing Optical Outbursts	Proposal title
observer	Professor David Weintraub	Principal investigator
object	V1647 Ori	Source name
dtcycle	0	
cycle	P	events from which exps? Prim/Second/Both
ra_targ	86.554583	Observer's specified target RA [deg]
dec_targ	-0.101333	Observer's specified target Dec [deg]
ra_nom	86.551918739487	Nominal RA [deg]
dec_nom	-0.093709682786624	Nominal Dec [deg]
roll_nom	91.974194610779	Nominal Roll [deg]
revision	2	Processing version of data
ontime	20159.300155044	Sum of GTIs [s]
livetime	19895.904057457	Livetime [s]
ontime0	20159.300155044	Sum of GTIs [s]
ontime1	20159.300155044	Sum of GTIs [s]
ontime2	20159.300155044	Sum of GTIs [s]
ontime3	20159.300155044	Sum of GTIs [s]
l2events	87184	Number of level 2 events



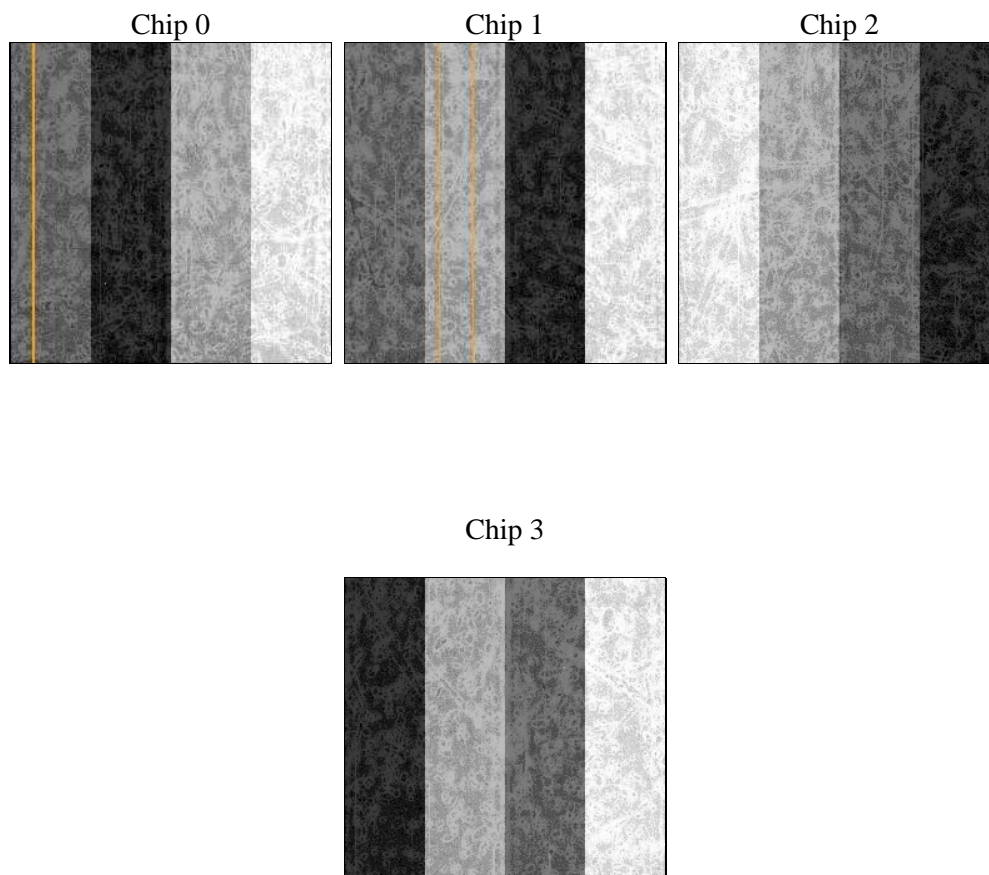
2 OBI

2.1 OBI

2.1.1 Images



2.1.2 Bias



2.1.3 Parameters

obi_num	0	Obi number	sched_exp_time	20000.460000	[s] Scheduled observation exposure time
ascdsver	8.4.4	Processing system revision	ontime	20159.300155044	Sum of GTIs [s]
caldsver	4.4.9	 	ontime0	20159.300155044	Sum of GTIs [s]
date	2012-05-21T09:39:04	Date and time of file creation	ontime1	20159.300155044	Sum of GTIs [s]
revision	2	Processing version of data	ontime2	20159.300155044	Sum of GTIs [s]
			ontime3	20159.300155044	Sum of GTIs [s]
			l1events	770799	Number of level 1 events

2.1.4 Events

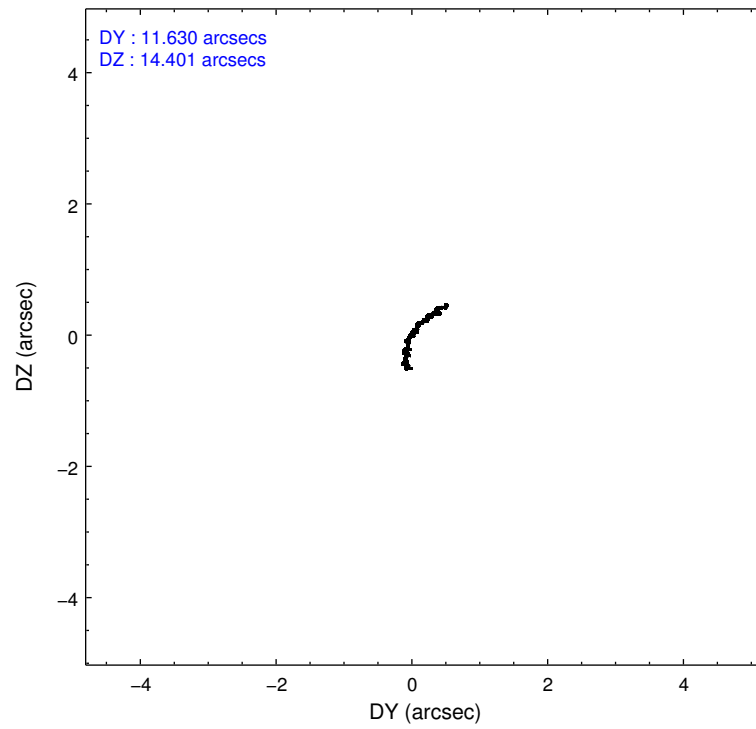
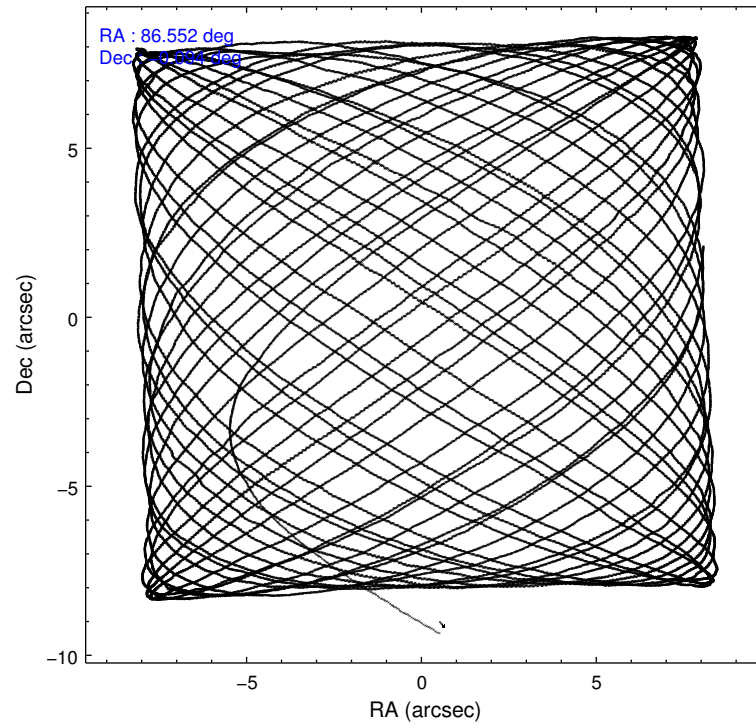
	ccd 0	ccd 1	ccd 2	ccd 3
level 1 events	182320	188953	202126	197400
rejected events	157545	162211	177913	171841
rejected %	86%	85%	88%	87%

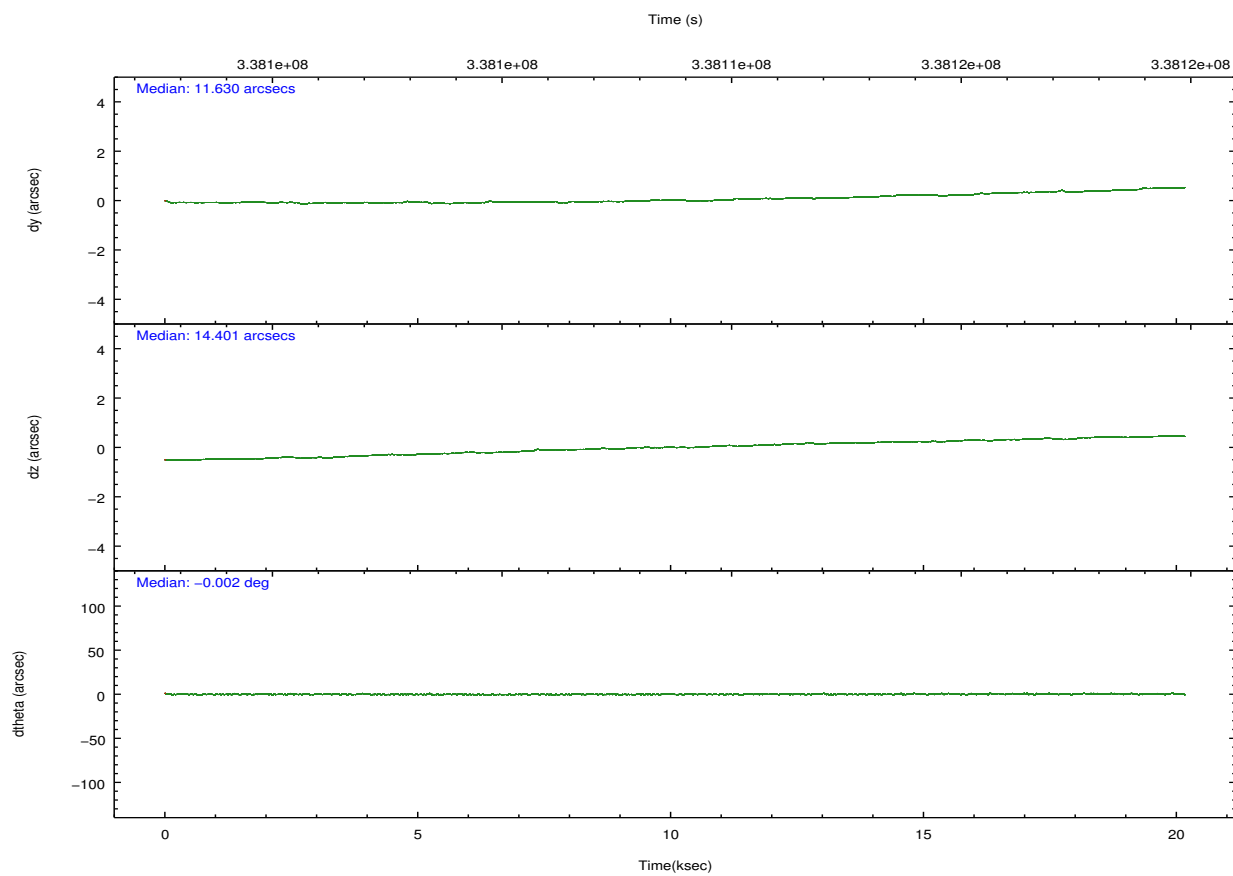
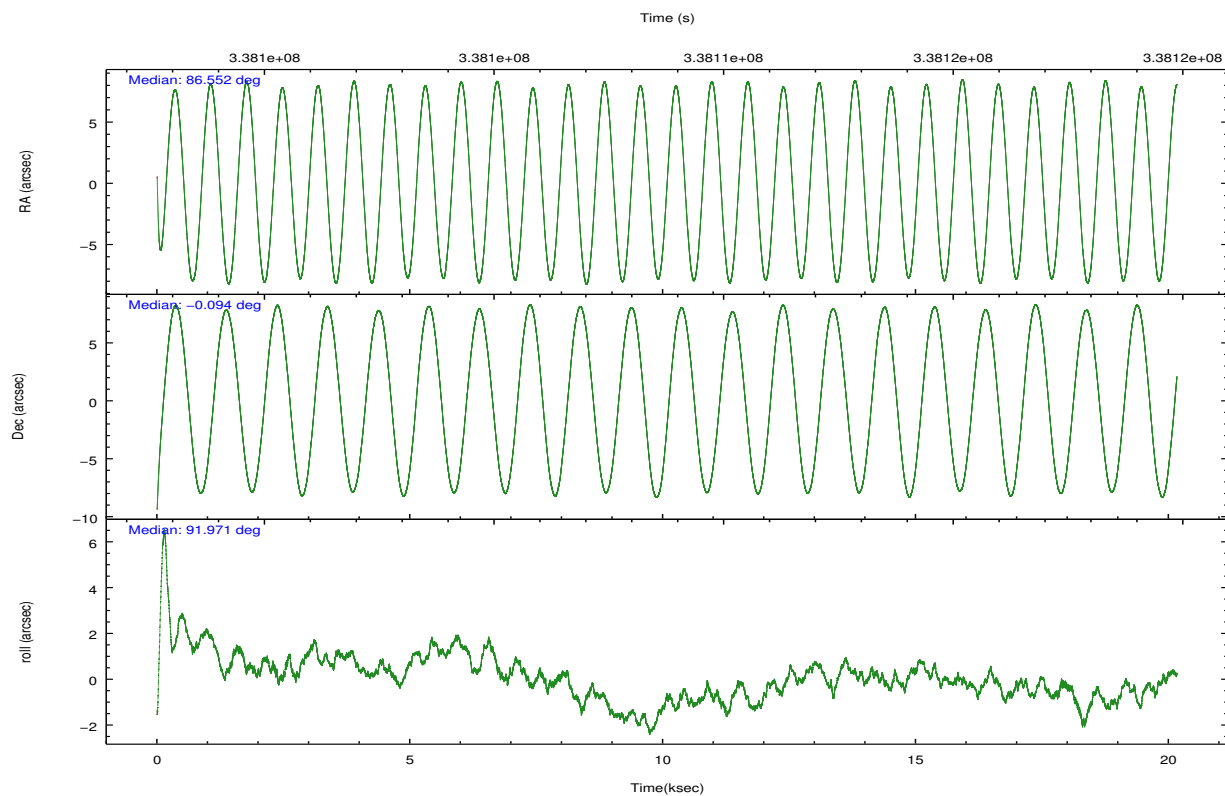
	ccd 0	ccd 1	ccd 2	ccd 3
grade 0 events	10594	10566	10975	11562
	5%	5%	5%	5%
grade 1 events	130	129	133	162
	0%	0%	0%	0%
grade 2 events	5562	6199	5115	5102
	3%	3%	2%	2%
grade 3 events	2343	2558	2198	2286
	1%	1%	1%	1%
grade 4 events	2153	2430	2213	2331
	1%	1%	1%	1%
grade 5 events	8382	8929	7944	9685
	4%	4%	3%	4%
grade 6 events	4391	5244	3987	4545
	2%	2%	1%	2%
grade 7 events	148765	152898	169561	161727
	81%	80%	83%	81%

2.2 Compared Parameters

Parameter	Planned	Actual	Parameter	Planned	Actual
Instrument	ACIS	ACIS	Obspar format version number	7	7
Detector	ACIS-0123	ACIS-0123	Obspar file type	PREDICTED	ACTUAL
Grating	NONE	NONE	Obspar update status	NONE	UPDATED
Data mode	FAINT	FAINT	Number of optional ACIS chips dropped	0	0
Observation mode	POINTING	POINTING	On-chip summing requested	N	N
[deg] Pointing RA	86.566569	86.55191873948687	Subarray requested	NONE	NONE
[deg] Pointing Dec	-0.116967	-0.09370968278662363	Alternating exposures requested	N	N
[deg] Pointing Roll	91.765542	91.97419461077891	[s] Primary exposure time	0.000000	3.1
[mm] SIM focus pos	-0.782348	-0.7809083437167272			
[mm] SIM defocus	0	0.001439871863259334			
[mm] SIM translation stage pos	-233.592463	-233.5874344608287			
[mm] SIM translation stage offset	0	-0.005018542100998502			
[s] Observation start time (MET)	338098857.184000	338097830.56334			
Observation start date	2008-09-18T04:19:52	2008-09-18T04:03:50			
[s] Observation end time (MET)	338118858.184000	338119099.31438			
Observation end date	2008-09-18T09:53:13	2008-09-18T09:58:19			
Read mode	TIMED	TIMED			

2.3 Aspect



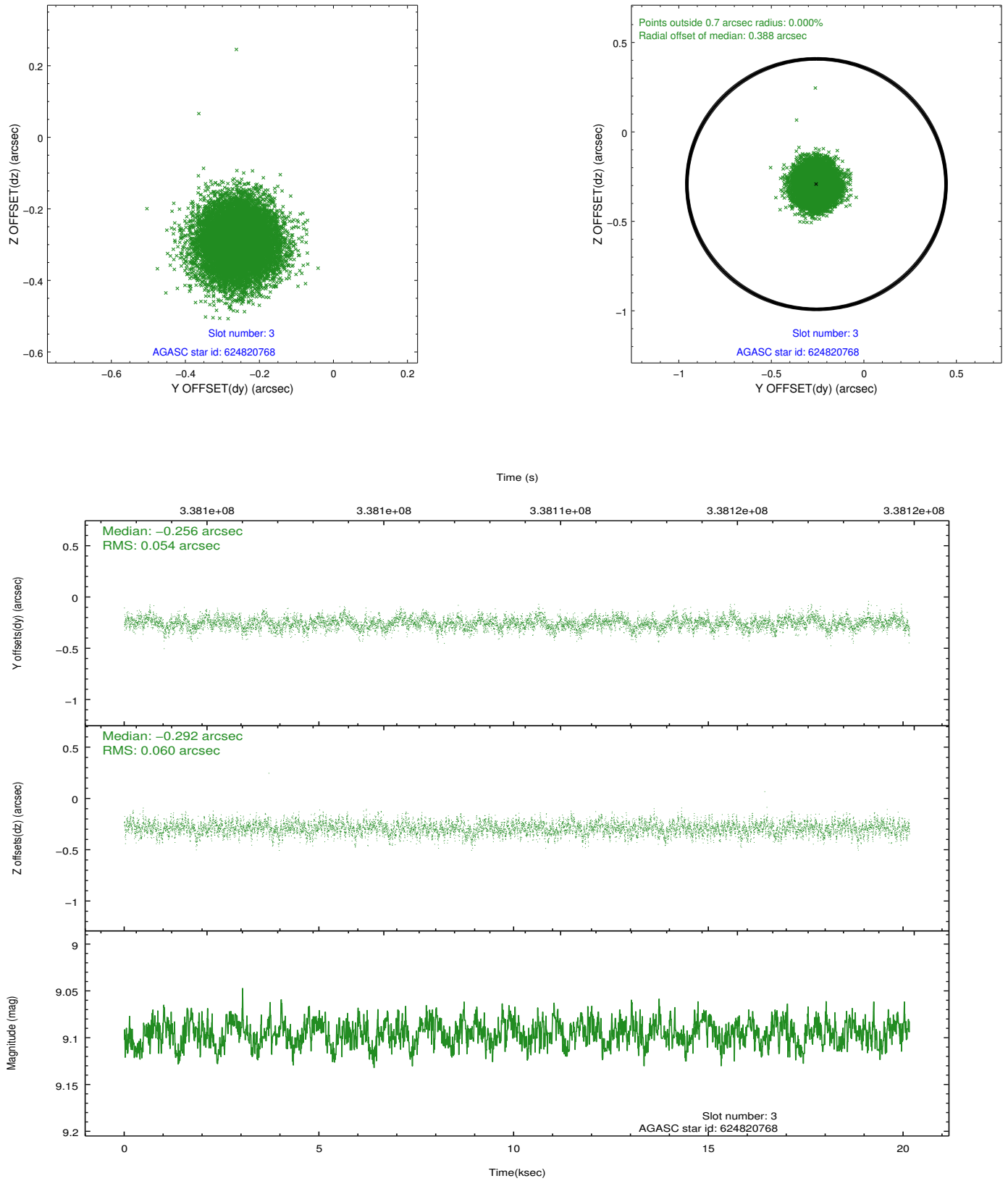


Slot Statistics

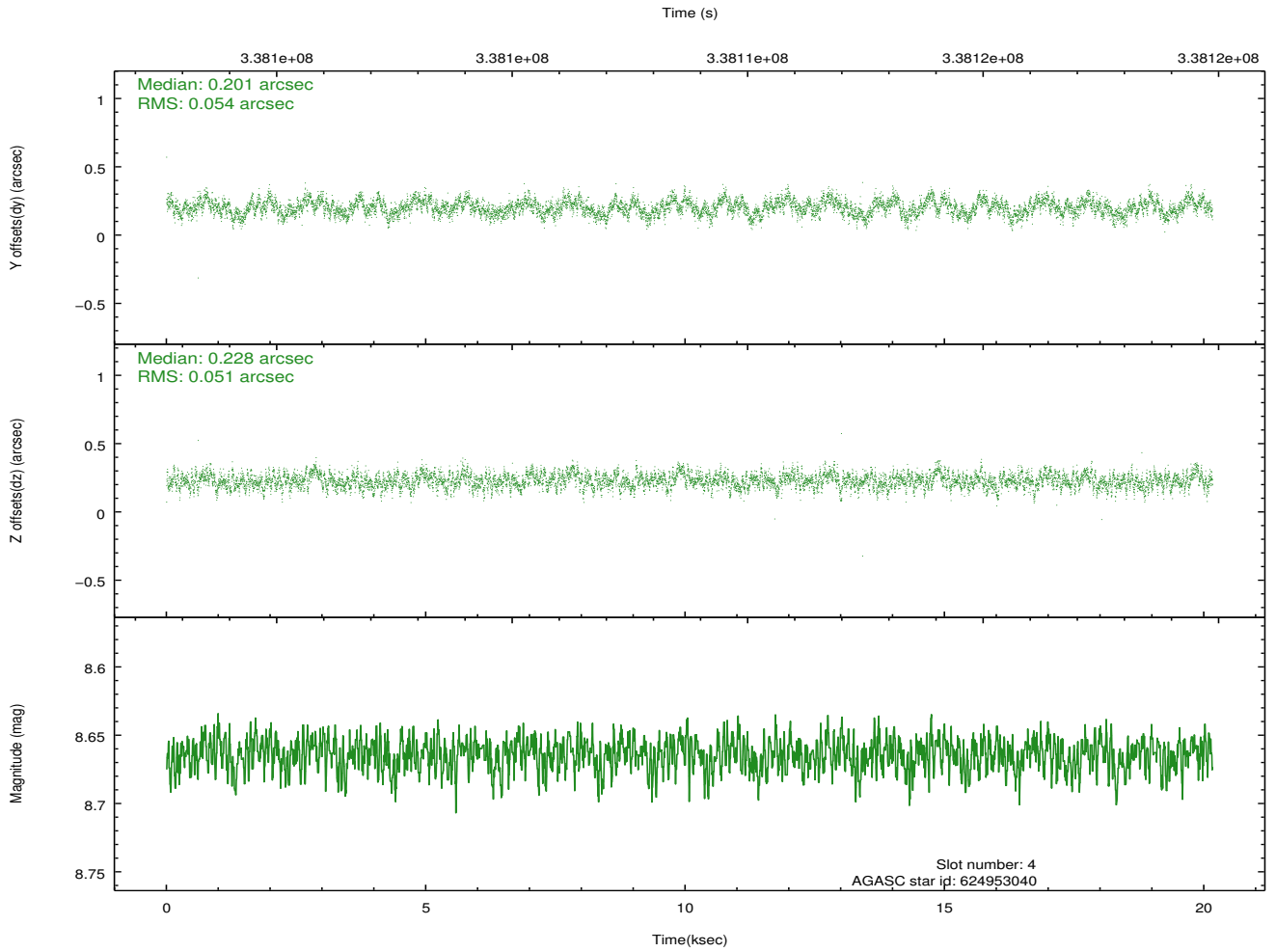
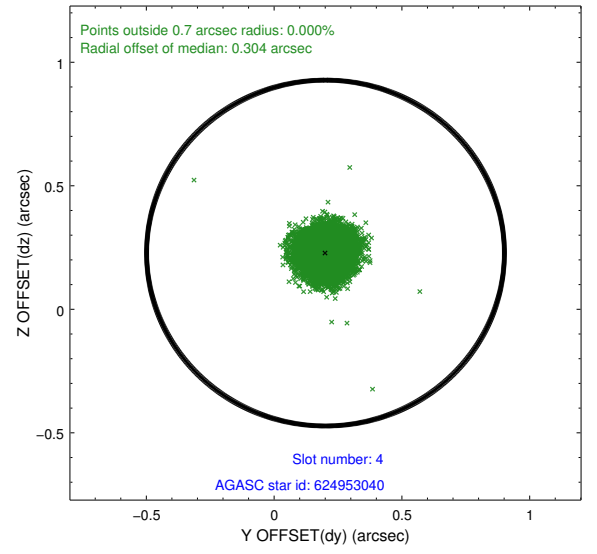
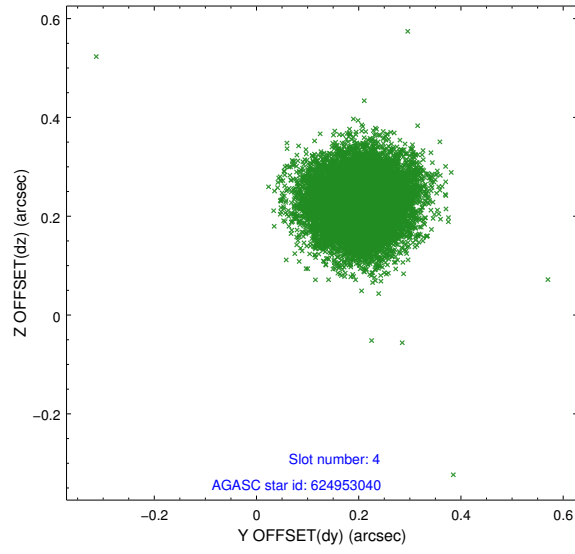
slot	status	id	mag	n_pts	med_dy	med_dz	dr1	dr2	ra	dec	mean_y	mean_z
0	FID	ACIS-I-1	7.00	4919	0.010	0.024	0.009	0.017	0.000000	0.000000	927.86	-837.94
1	FID	ACIS-I-5	6.99	4919	-0.162	0.032	0.007	0.011	0.000000	0.000000	-1820.34	1059.44
2	FID	ACIS-I-6	7.00	4919	0.062	0.015	0.010	0.018	0.000000	0.000000	393.23	1704.15
3	GUIDE	624820768	9.10	9828	-0.256	-0.292	0.086	0.140	86.202480	-0.061953	238.24	1304.06
4	GUIDE	624953040	8.66	9831	0.201	0.228	0.080	0.124	87.231595	-0.668980	-2060.22	-2331.72
5	GUIDE	624954088	9.59	9826	0.053	-0.091	0.102	0.160	86.606399	-0.671650	-2000.24	-81.91
6	GUIDE	624954400	9.15	9834	0.055	0.156	0.077	0.126	86.607838	-0.762568	-2327.54	-76.54
7	GUIDE	624952480	7.67	9836	-0.049	-0.009	0.081	0.127	87.106269	-0.759614	-2372.33	-1870.48

2.4 Star Slots

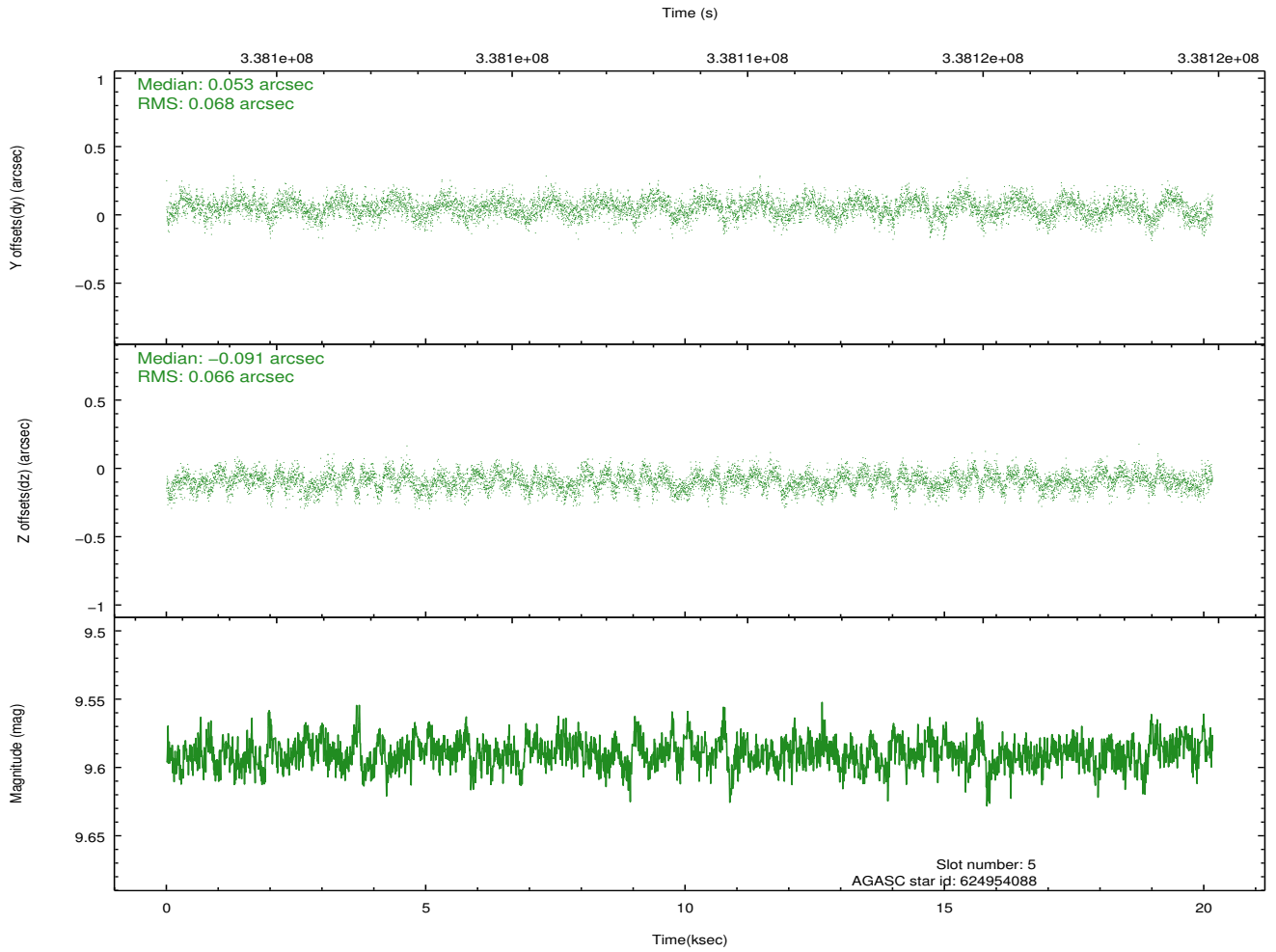
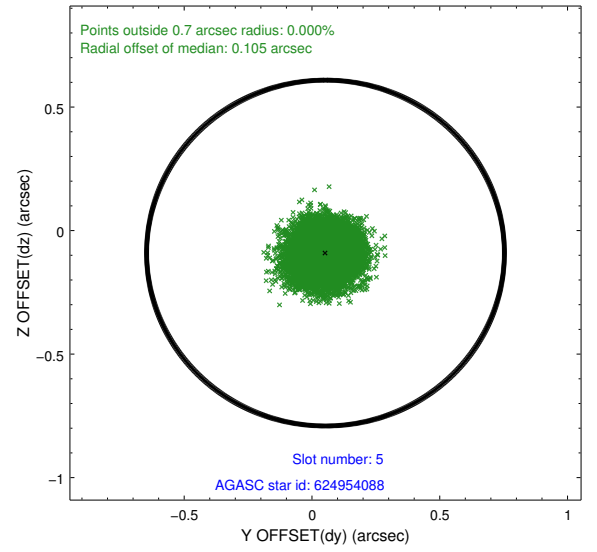
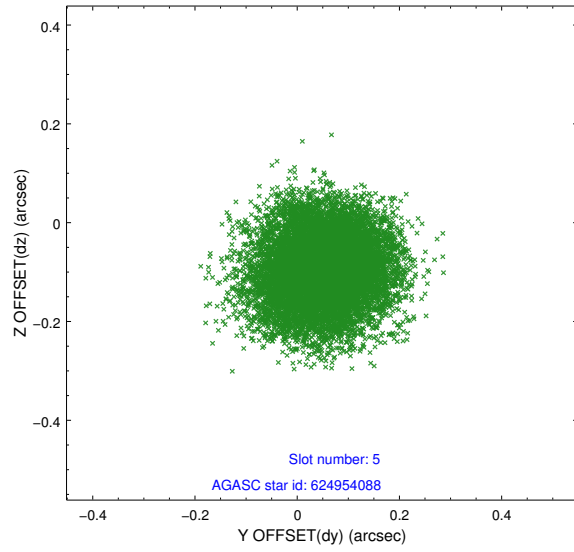
2.4.1 Slot 3



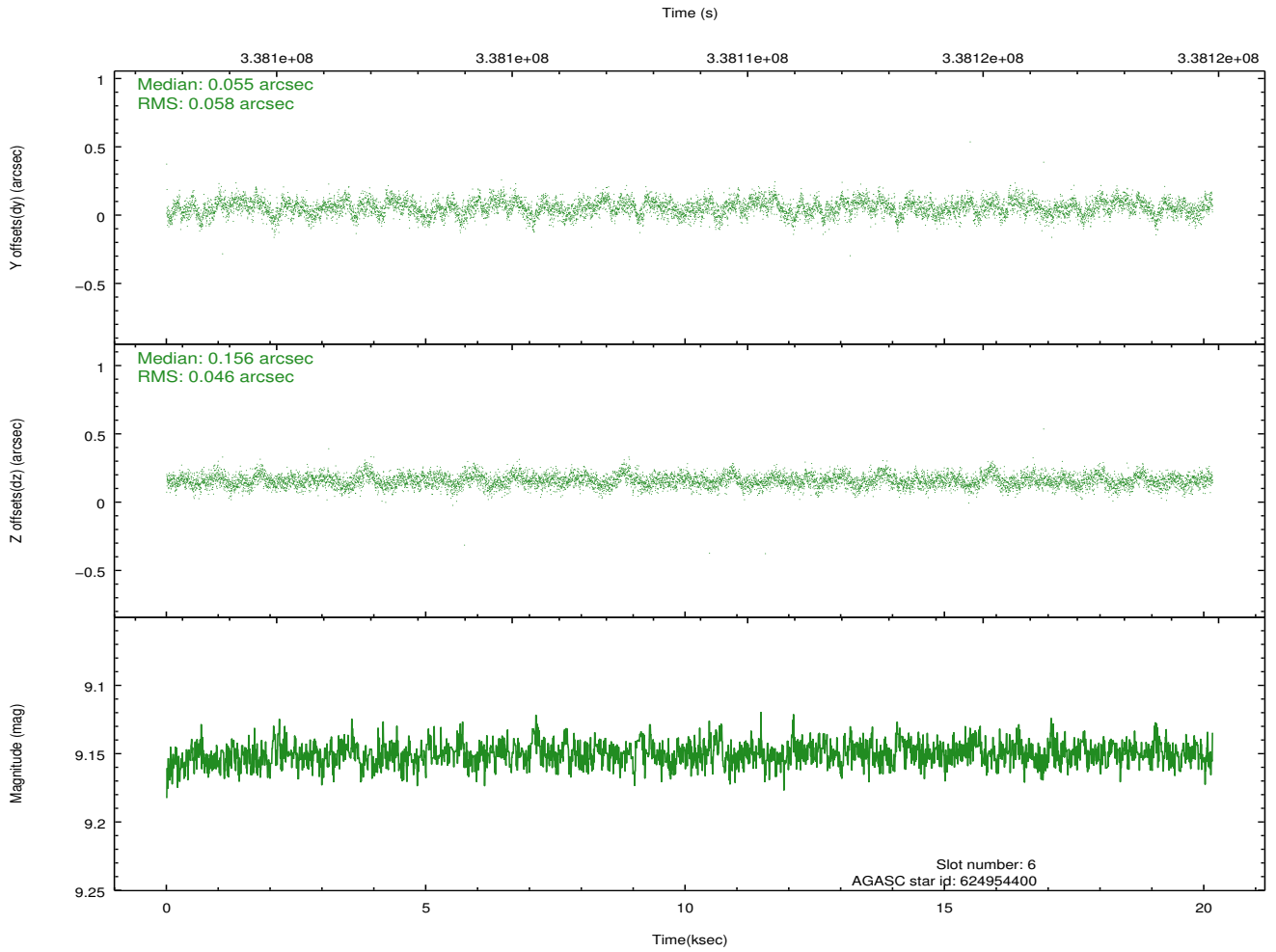
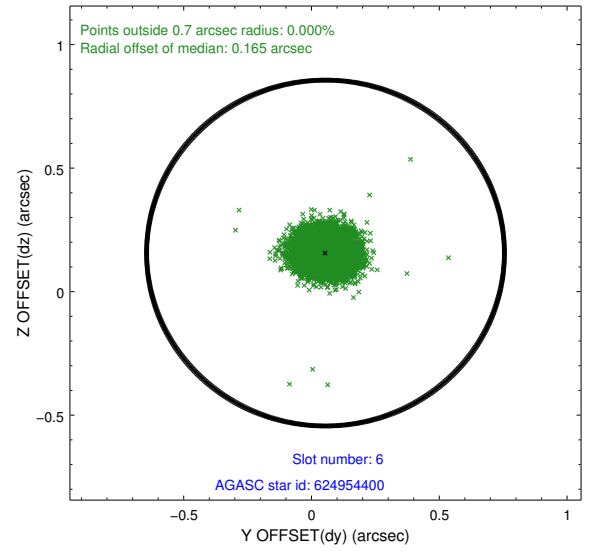
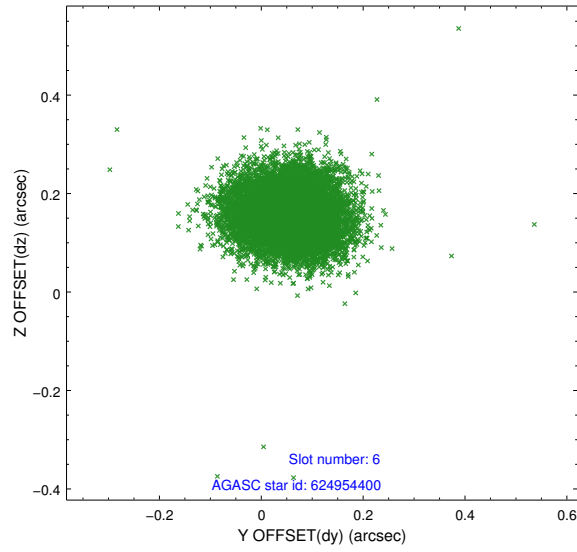
2.4.2 Slot 4



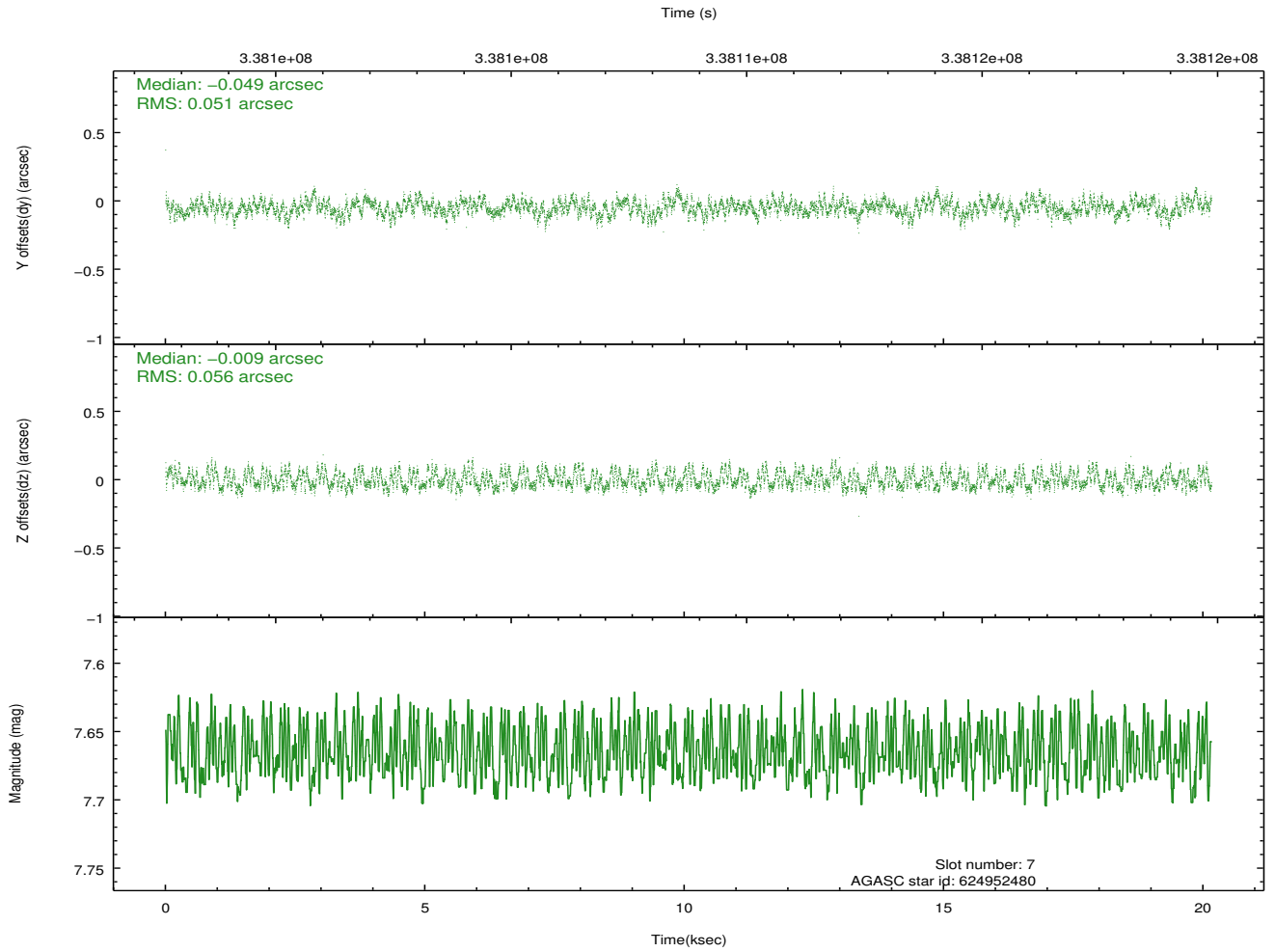
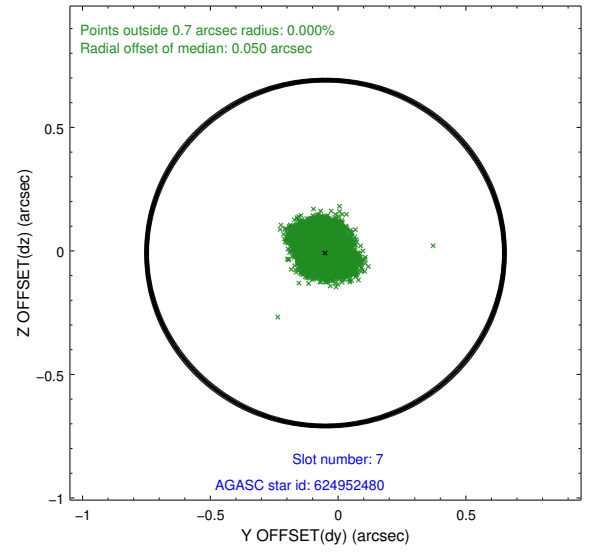
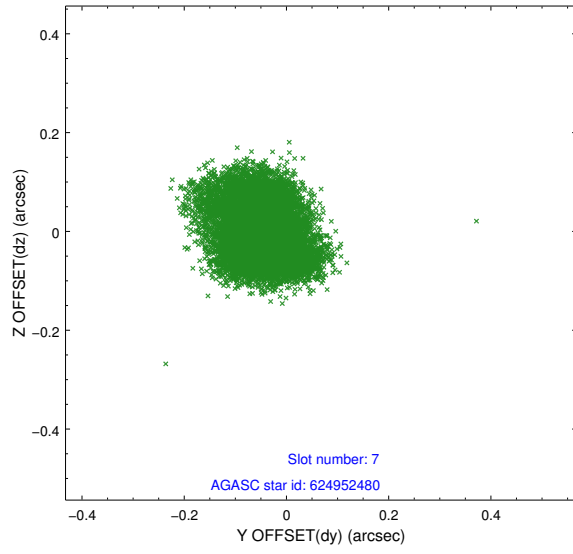
2.4.3 Slot 5



2.4.4 Slot 6

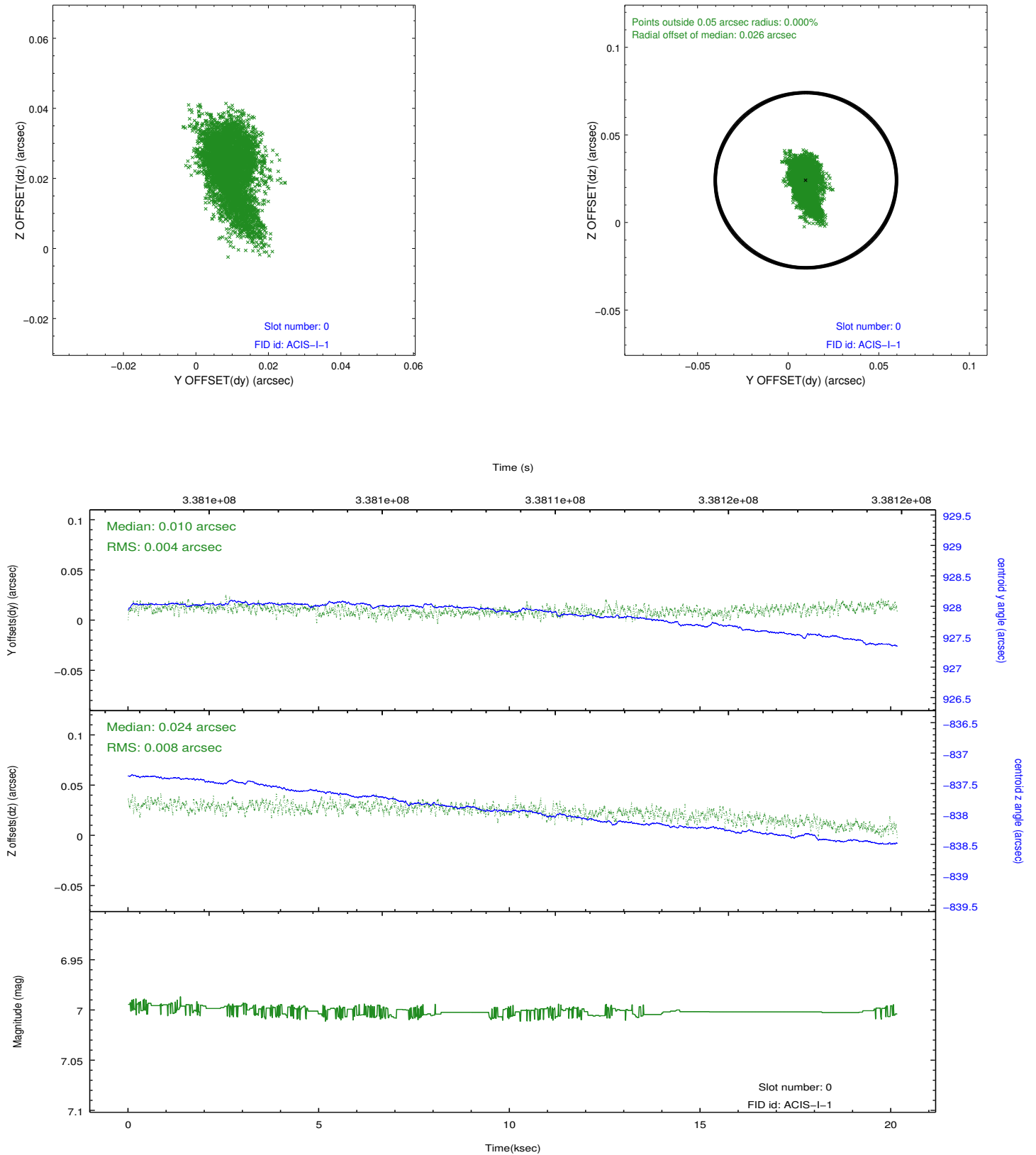


2.4.5 Slot 7

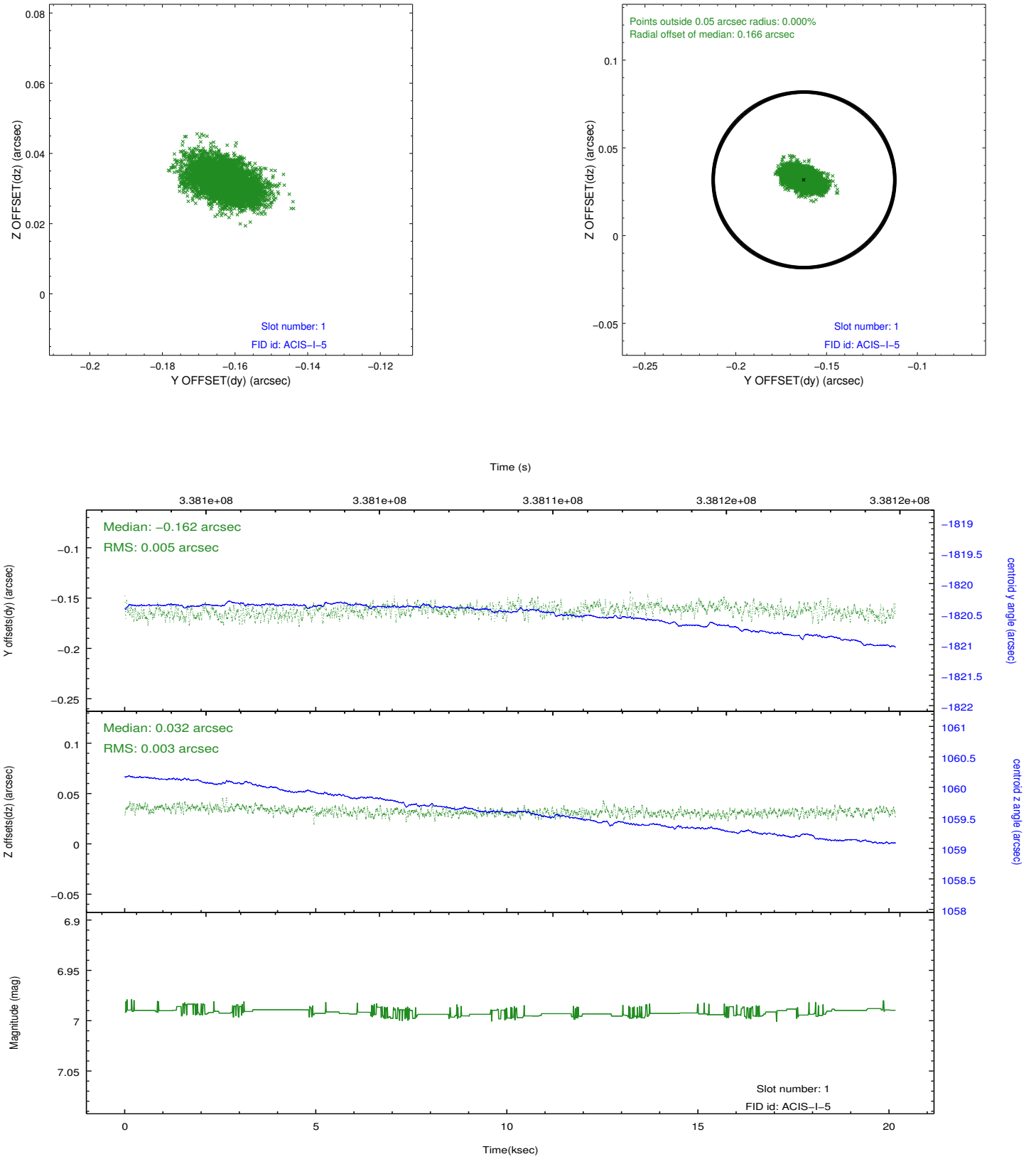


2.5 FID Slots

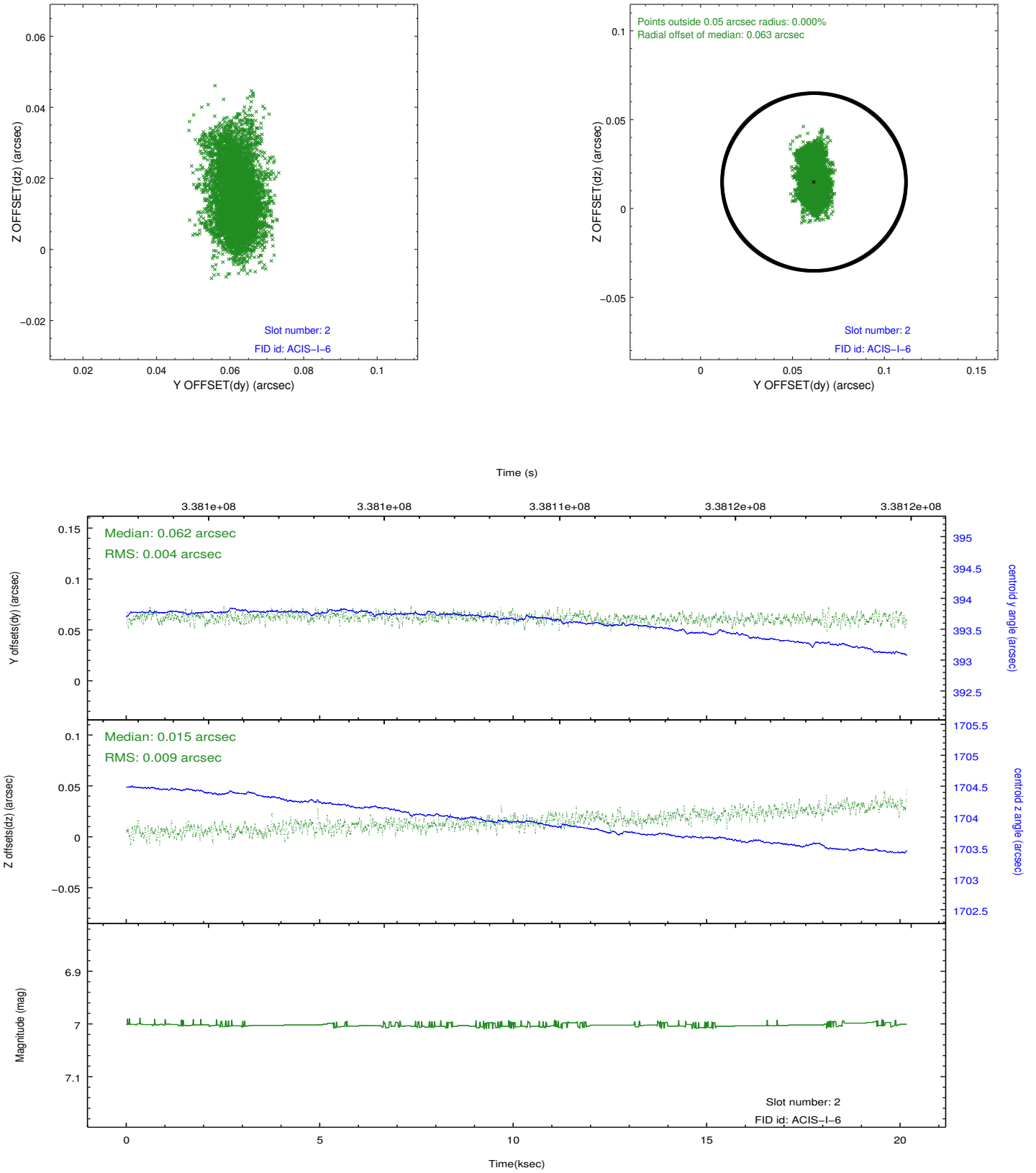
2.5.1 Slot 0



2.5.2 Slot 1



2.5.3 Slot 2



A Summary

A.1 Status

V&V Scientist	Jen Lauer
V&V Date (YYYY-MM-DD)	2012.05.30
V&V Edition	1
V&V Disposition and Status	OK
V&V Charge Time	20.1593001

A.2 Comments