

V&V Reference Report

L2 ASCDS Version : 8.4.4

Observation 9816 - L2 Version 2
Chandra X-Ray Center

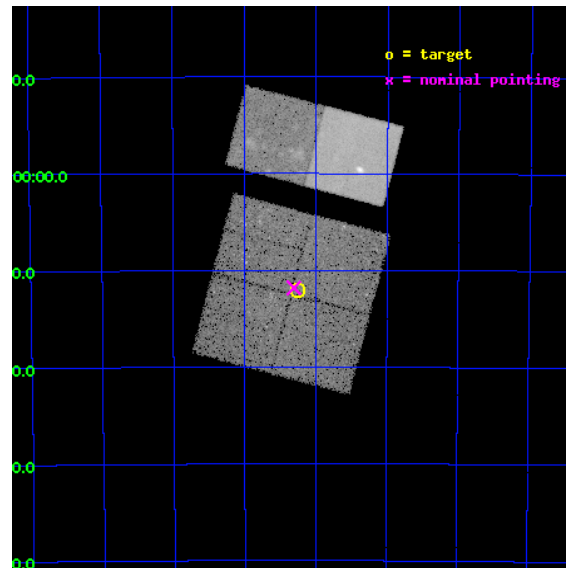
L2 Processing Date : May 9 2012

Contents

1	Front	2
2	OBI	3
2.1	OBI	3
2.1.1	Images	3
2.1.2	Bias	3
2.1.3	Parameters	4
2.1.4	Events	4
2.2	Compared Parameters	5
2.3	Aspect	6
2.4	Star Slots	9
2.4.1	Slot 3	9
2.4.2	Slot 4	10
2.4.3	Slot 5	11
2.4.4	Slot 6	12
2.4.5	Slot 7	13
2.5	FID Slots	14
2.5.1	Slot 0	14
2.5.2	Slot 1	15
2.5.3	Slot 2	16
A	Summary	17
A.1	Status	17
A.2	Comments	17

1 Front

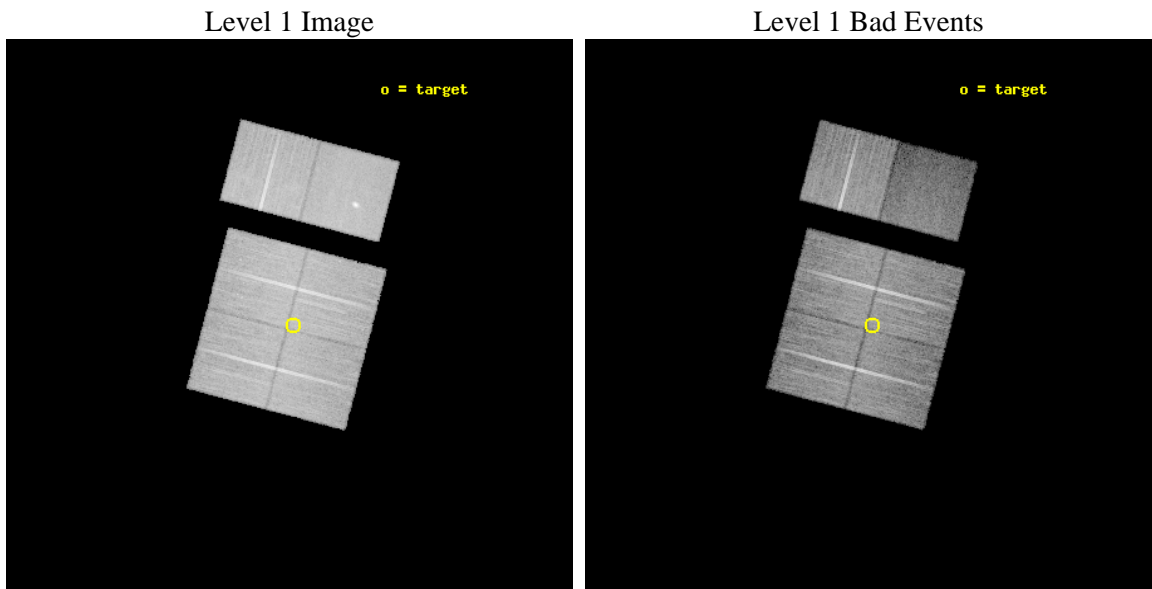
seq_num	900829	Sequence number
obs_id	9816	Observation id
title	The Great Nebula in Carina: Protoplanetary Disks to Starburst Galaxies	Proposal title
observer	Dr. Leisa Townsley	Principal investigator
object	Carina South Pillars Ptg 1	Source name
dtcycle	0	
cycle	P	events from which exps? Prim/Second/Both
ra_targ	161.312917	Observer's specified target RA [deg]
dec_targ	-60.20125	Observer's specified target Dec [deg]
ra_nom	161.32676003219	Nominal RA [deg]
dec_nom	-60.196959360639	Nominal Dec [deg]
roll_nom	14.720697153168	Nominal Roll [deg]
revision	2	Processing version of data
ontime	21033.517931163	Sum of GTIs [s]
livetime	20767.178862255	Livetime [s]
ontime0	21033.517960906	Sum of GTIs [s]
ontime1	21039.999921679	Sum of GTIs [s]
ontime2	21036.758921325	Sum of GTIs [s]
ontime3	21033.517931163	Sum of GTIs [s]
ontime6	21039.999921679	Sum of GTIs [s]
ontime7	21039.999921679	Sum of GTIs [s]
l2events	181103	Number of level 2 events



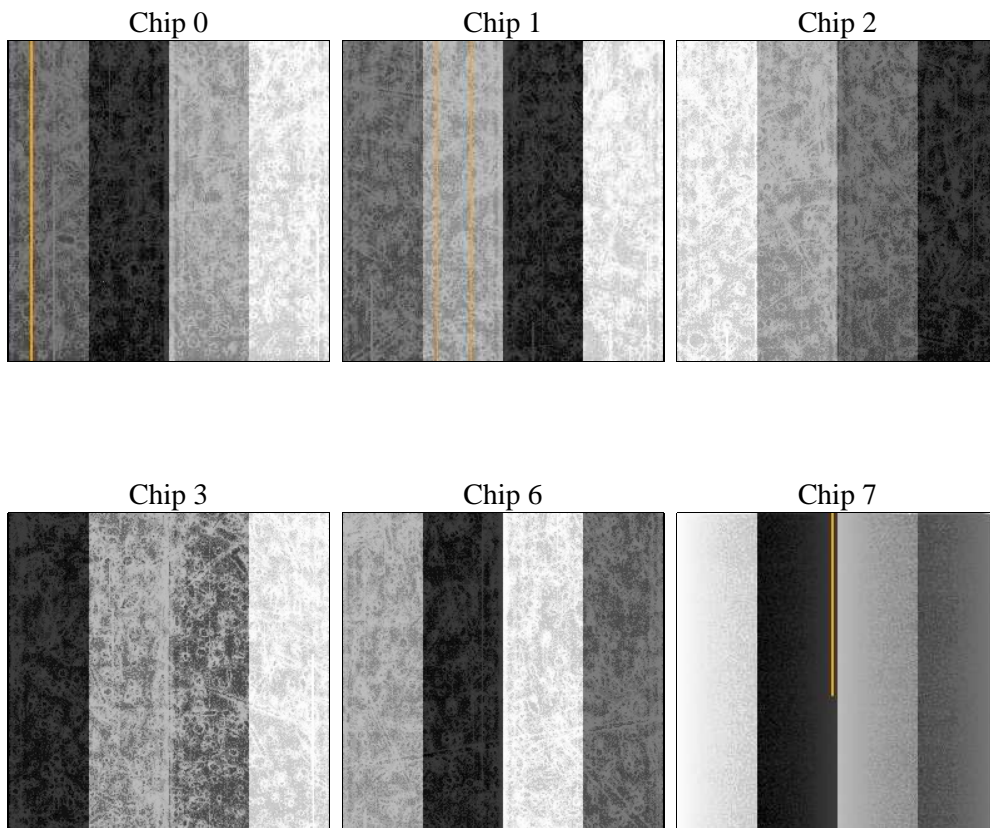
2 OBI

2.1 OBI

2.1.1 Images



2.1.2 Bias



2.1.3 Parameters

obi_num	1	Obi number	sched_exp_time	21000.000000	[s] Scheduled observation exposure time
ascdsver	8.4.4	Processing system revision	ontime	21033.517931163	Sum of GTIs [s]
caldsver	4.4.9	 	ontime0	21033.517960906	Sum of GTIs [s]
date	2012-05-09T19:03:24	Date and time of file creation	ontime1	21039.999921679	Sum of GTIs [s]
revision	2	Processing version of data	ontime2	21036.758921325	Sum of GTIs [s]
			ontime3	21033.517931163	Sum of GTIs [s]
			ontime6	21039.999921679	Sum of GTIs [s]
			ontime7	21039.999921679	Sum of GTIs [s]
			l1events	969170	Number of level 1 events

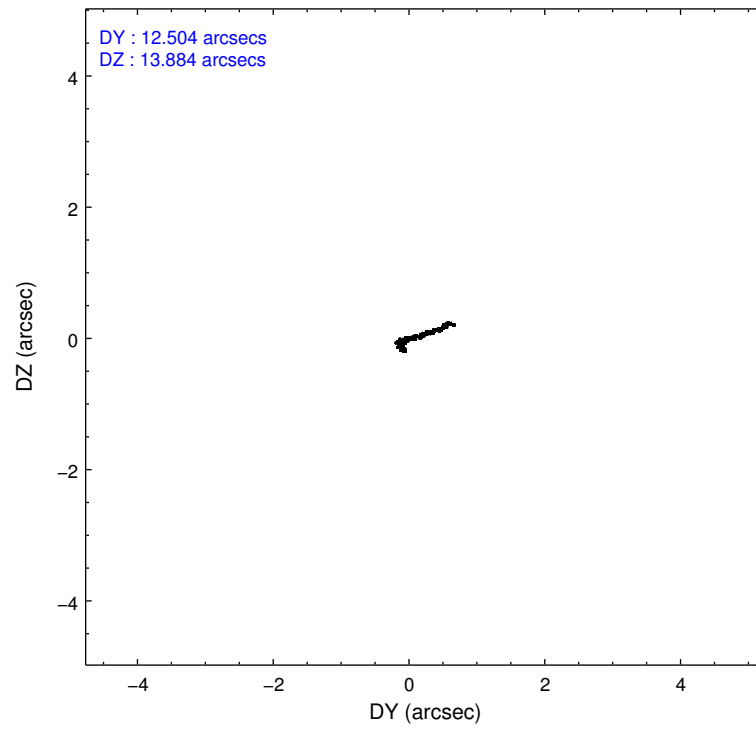
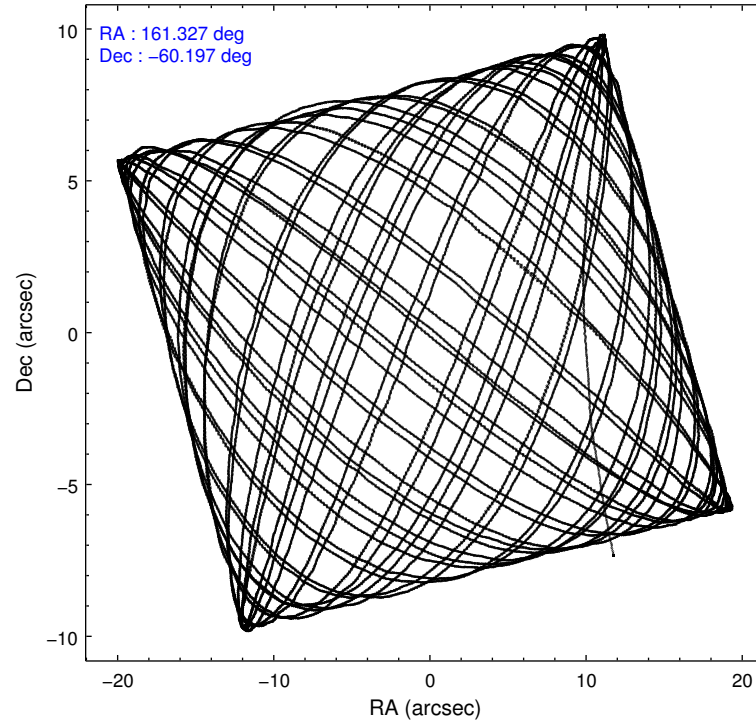
2.1.4 Events

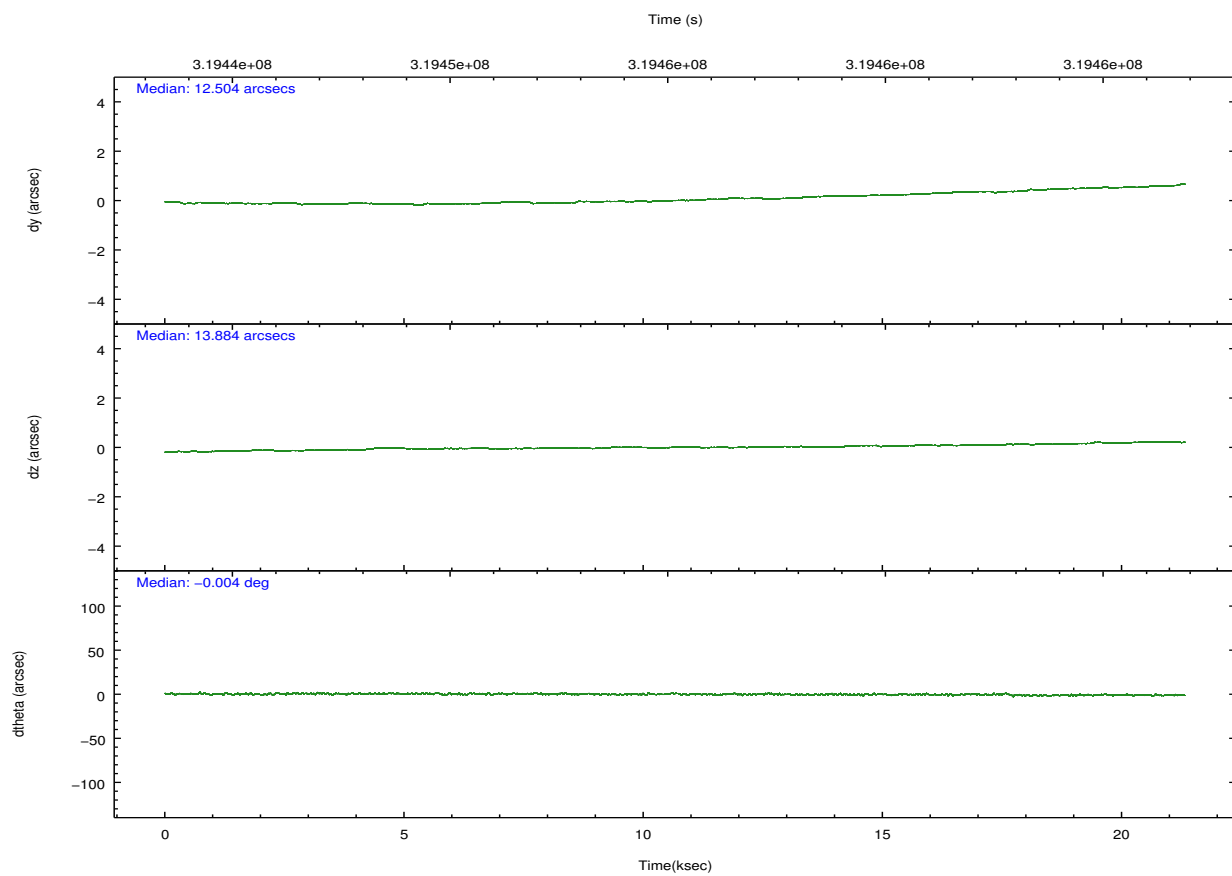
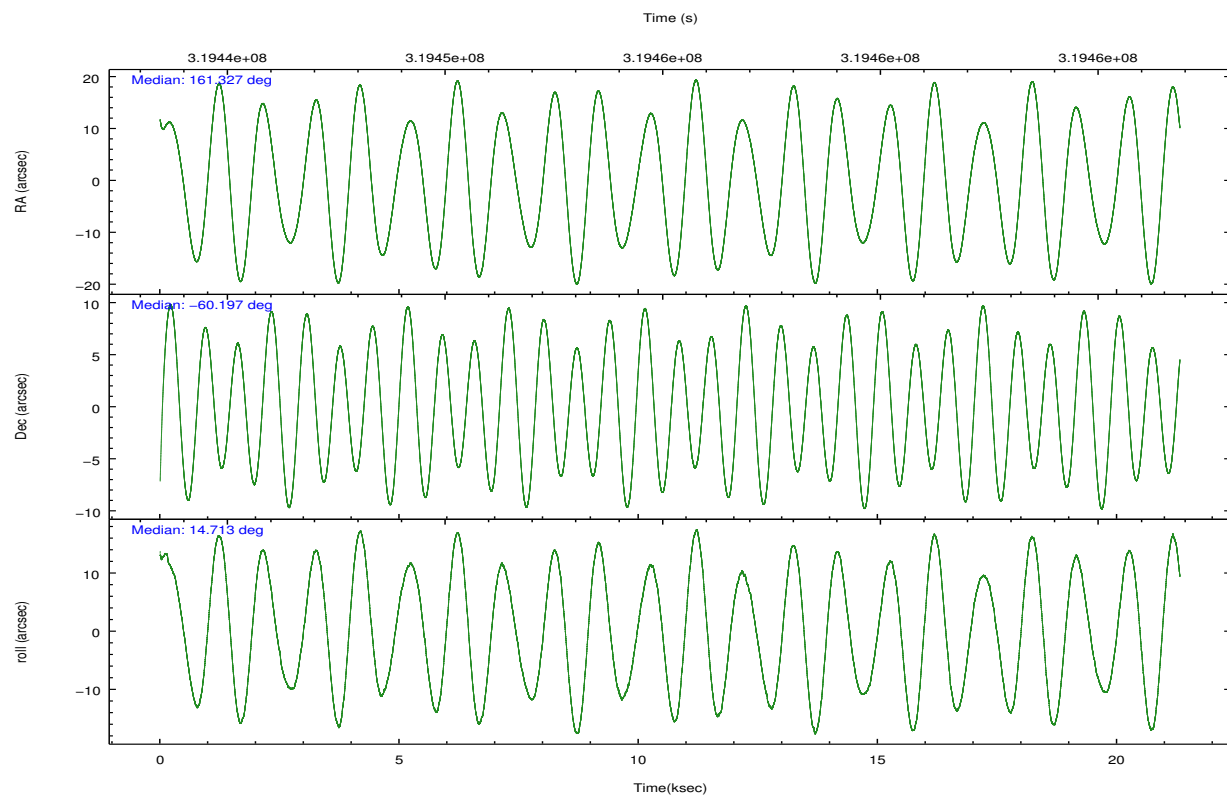
	ccd 0	ccd 1	ccd 2	ccd 3	ccd 6	ccd 7		ccd 0	ccd 1	ccd 2	ccd 3	ccd 6	ccd 7
level 1 events	151707	142702	170988	156837	173944	172992	grade 0 events	7322	6944	10369	8557	15151	15835
rejected events	134449	125298	150618	138715	146900	74748		4%	4%	6%	5%	8%	9%
rejected %	88%	87%	88%	88%	84%	43%	grade 1 events	84	75	107	110	124	248
								0%	0%	0%	0%	0%	0%
							grade 2 events	3816	3619	4000	3429	4652	22272
								2%	2%	2%	2%	2%	12%
							grade 3 events	1736	1876	1680	1687	1929	9891
								1%	1%	0%	1%	1%	5%
							grade 4 events	1669	1779	1676	1672	1921	9969
								1%	1%	0%	1%	1%	5%
							grade 5 events	4724	5214	4270	5427	5399	15953
								3%	3%	2%	3%	3%	9%
							grade 6 events	2721	3194	2653	2783	3397	40304
								1%	2%	1%	1%	1%	23%
							grade 7 events	129635	120001	146233	133172	141371	58520
								85%	84%	85%	84%	81%	33%

2.2 Compared Parameters

Parameter	Planned	Actual	Parameter	Planned	Actual
Instrument	ACIS	ACIS	Obspar format version number	7	7
Detector	ACIS-012367	ACIS-012367	Obspar file type	PREDICTED	ACTUAL
Grating	NONE	NONE	Obspar update status	NONE	UPDATED
Data mode	VFAINT	VFAINT	CCD I0 on	Y	Y
Observation mode	POINTING	POINTING	CCD I1 on	Y	Y
[deg] Pointing RA	161.287522	161.3267600321887	CCD I2 on	Y	Y
[deg] Pointing Dec	-60.216383	-60.19695936063934	CCD I3 on	Y	Y
[deg] Pointing Roll	14.477957	14.72069715316757	CCD S0 on	N	N
[mm] SIM focus pos	-0.782348	-0.7809083437167272	CCD S1 on	N	N
[mm] SIM defocus	0	0.001439871863259334	CCD S2 on	O1	Y
[mm] SIM translation stage pos	-233.592463	-233.5874344608287	CCD S3 on	O2	Y
[mm] SIM translation stage offset	0	-0.005018542100998502	CCD S4 on	N	N
[s] Observation start time (MET)	319444836.184000	319443763.1425	CCD S5 on	N	N
Observation start date	2008-02-15T06:39:31	2008-02-15T06:22:43	Number of optional ACIS chips dropped	0	0
[s] Observation end time (MET)	319465836.184000	319466501.23111	On-chip summing requested	N	N
Observation end date	2008-02-15T12:29:31	2008-02-15T12:41:41	Subarray requested	NONE	NONE
Read mode	TIMED	TIMED	Alternating exposures requested	N	N
			[s] Primary exposure time	0.000000	3.2

2.3 Aspect



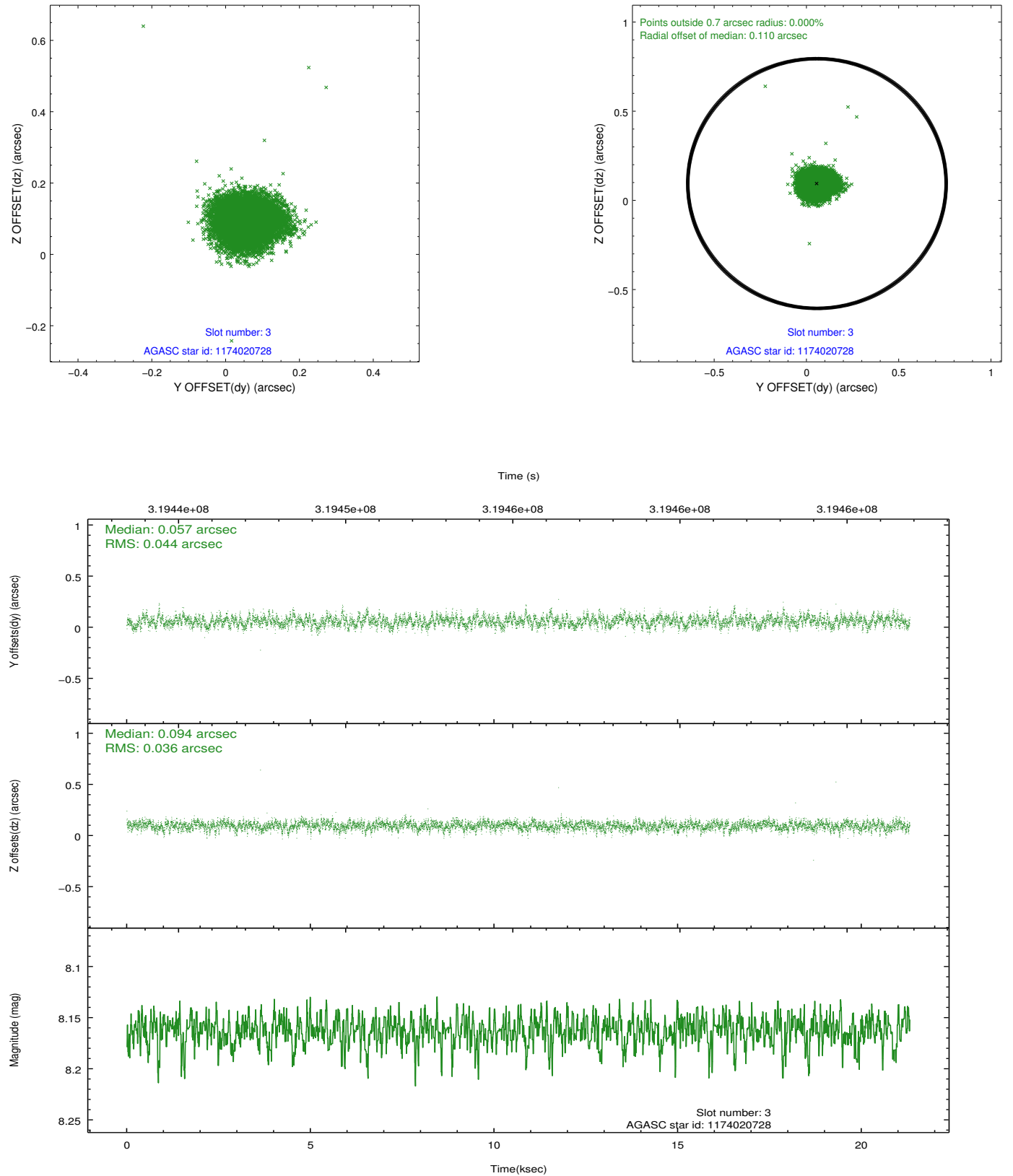


Slot Statistics

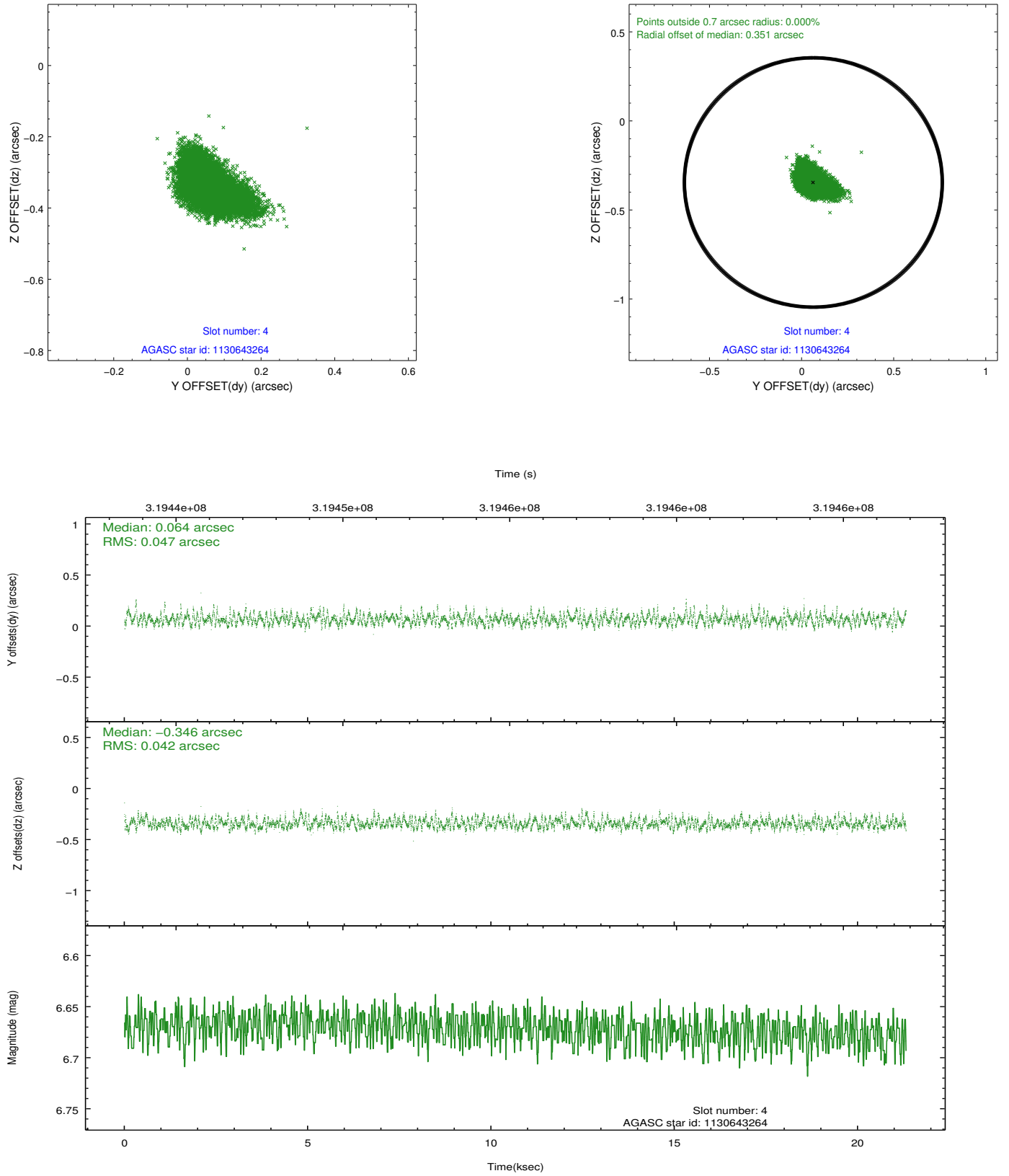
slot	status	id	mag	n_pts	med_dy	med_dz	dr1	dr2	ra	dec	mean_y	mean_z
0	FID	ACIS-I-1	7.23	5200	0.047	0.011	0.009	0.017	0.000000	0.000000	927.00	-837.42
1	FID	ACIS-I-2	7.14	5199	-0.041	-0.064	0.013	0.025	0.000000	0.000000	-767.09	-844.07
2	FID	ACIS-I-5	7.21	5200	-0.099	0.126	0.010	0.019	0.000000	0.000000	-1821.55	1060.01
3	GUIDE	1174020728	8.16	10400	0.057	0.094	0.060	0.097	162.364714	-60.294672	1786.44	-767.99
4	GUIDE	1130643264	6.67	10400	0.064	-0.346	0.066	0.113	160.322990	-59.676912	-1215.06	2305.93
5	GUIDE	1130640672	8.30	10398	0.022	-0.169	0.055	0.090	162.096044	-59.540805	2034.23	1977.79
6	GUIDE	1174012960	7.15	10396	0.023	0.135	0.053	0.081	160.855674	-60.332270	-849.64	-213.63
7	GUIDE	1174031160	8.82	10385	-0.170	0.281	0.083	0.133	162.483783	-60.757597	1545.26	-2430.33

2.4 Star Slots

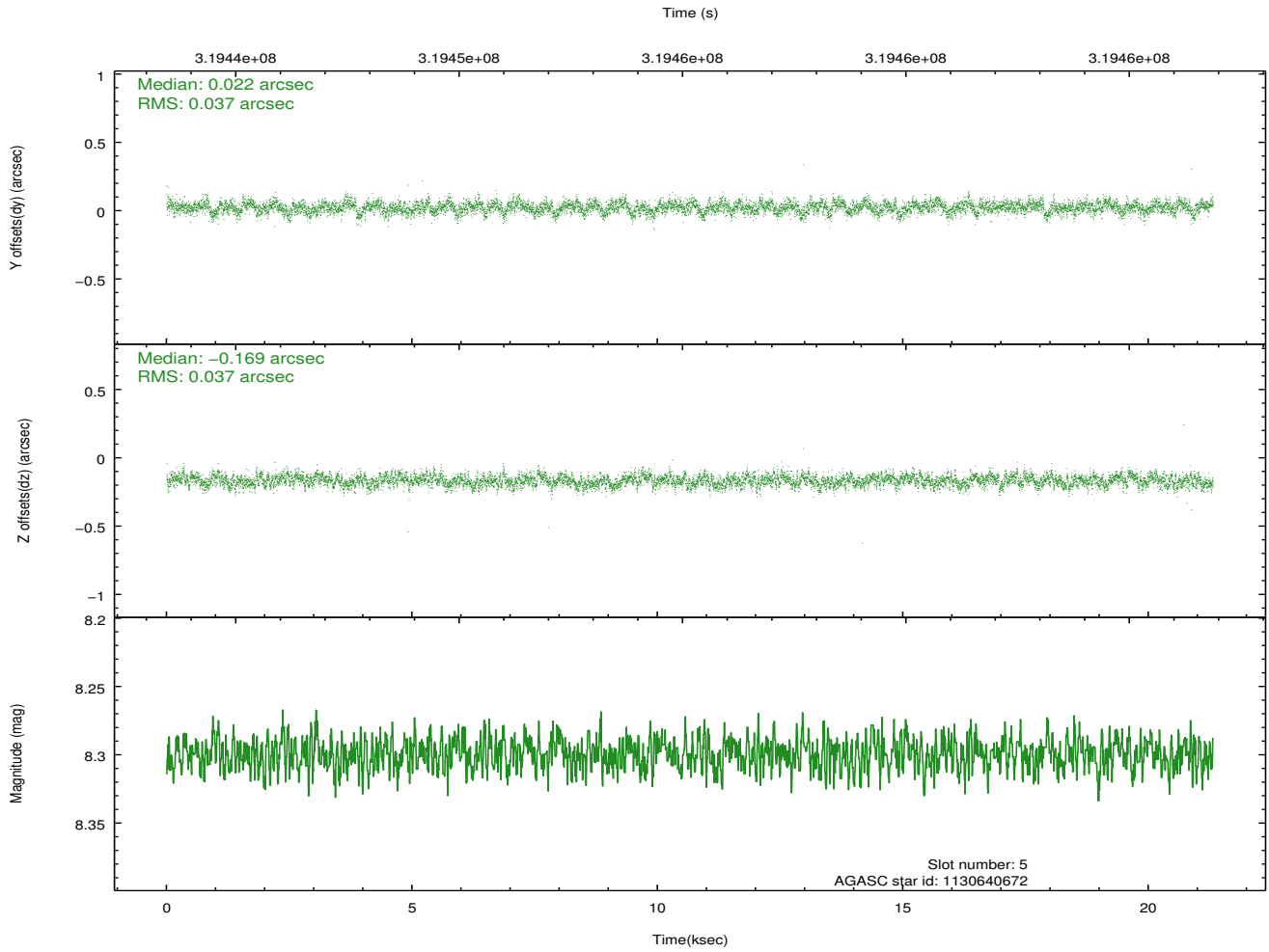
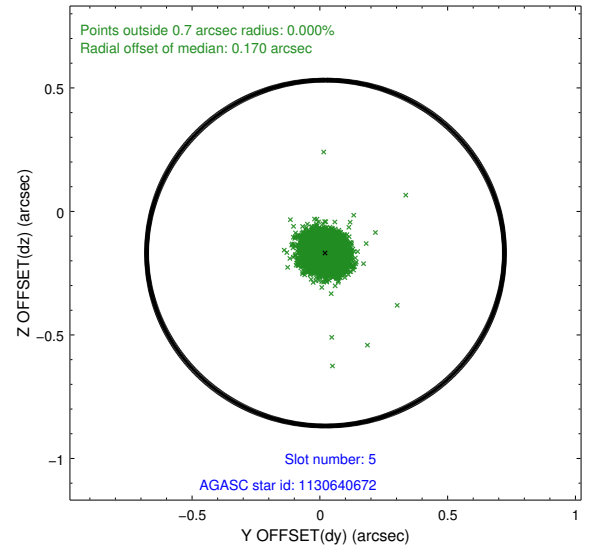
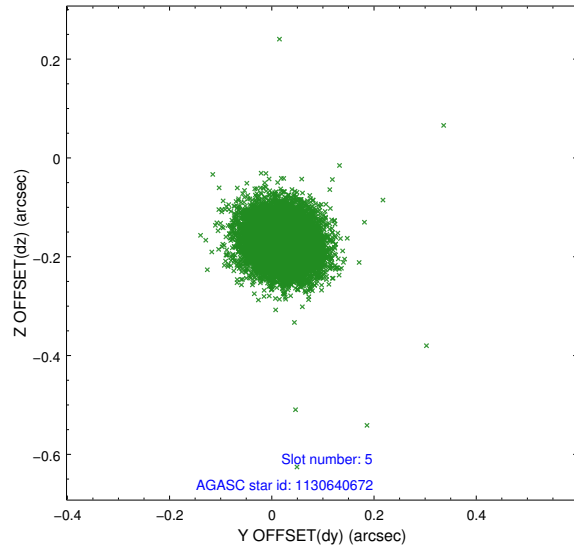
2.4.1 Slot 3



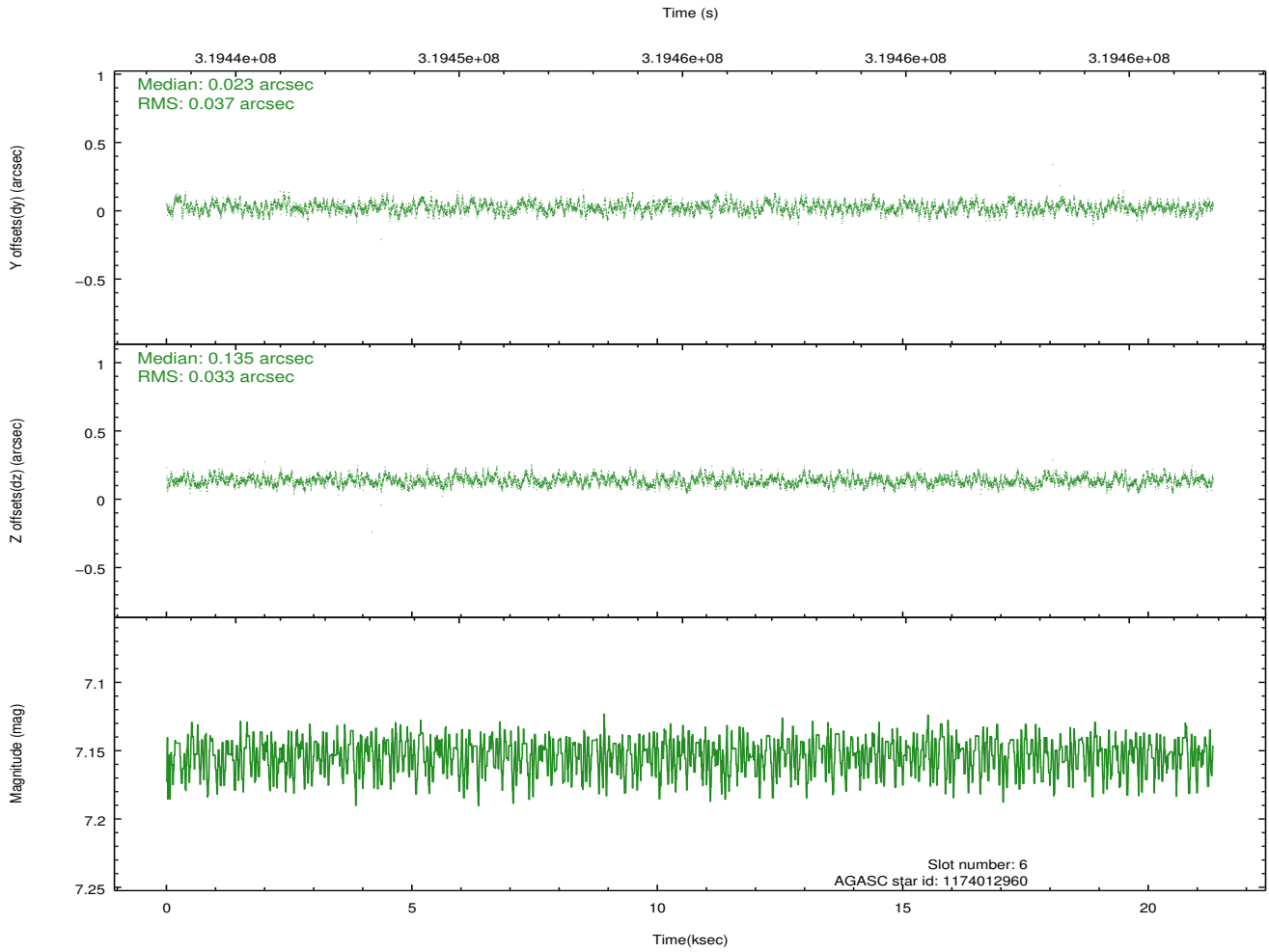
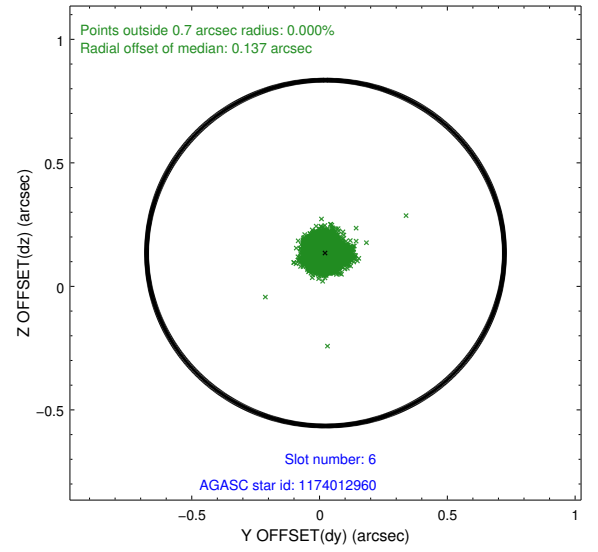
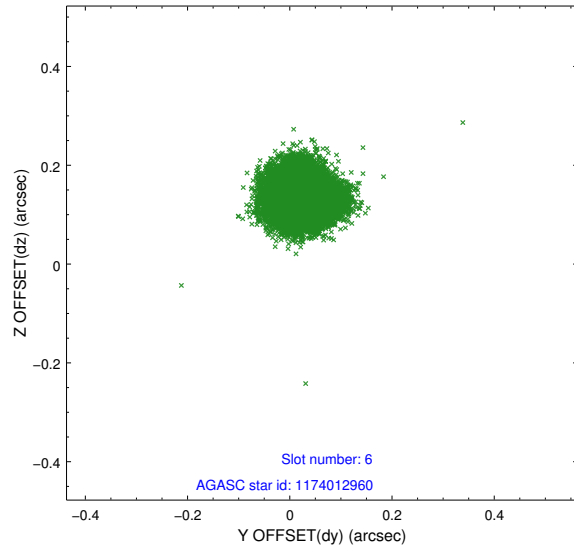
2.4.2 Slot 4



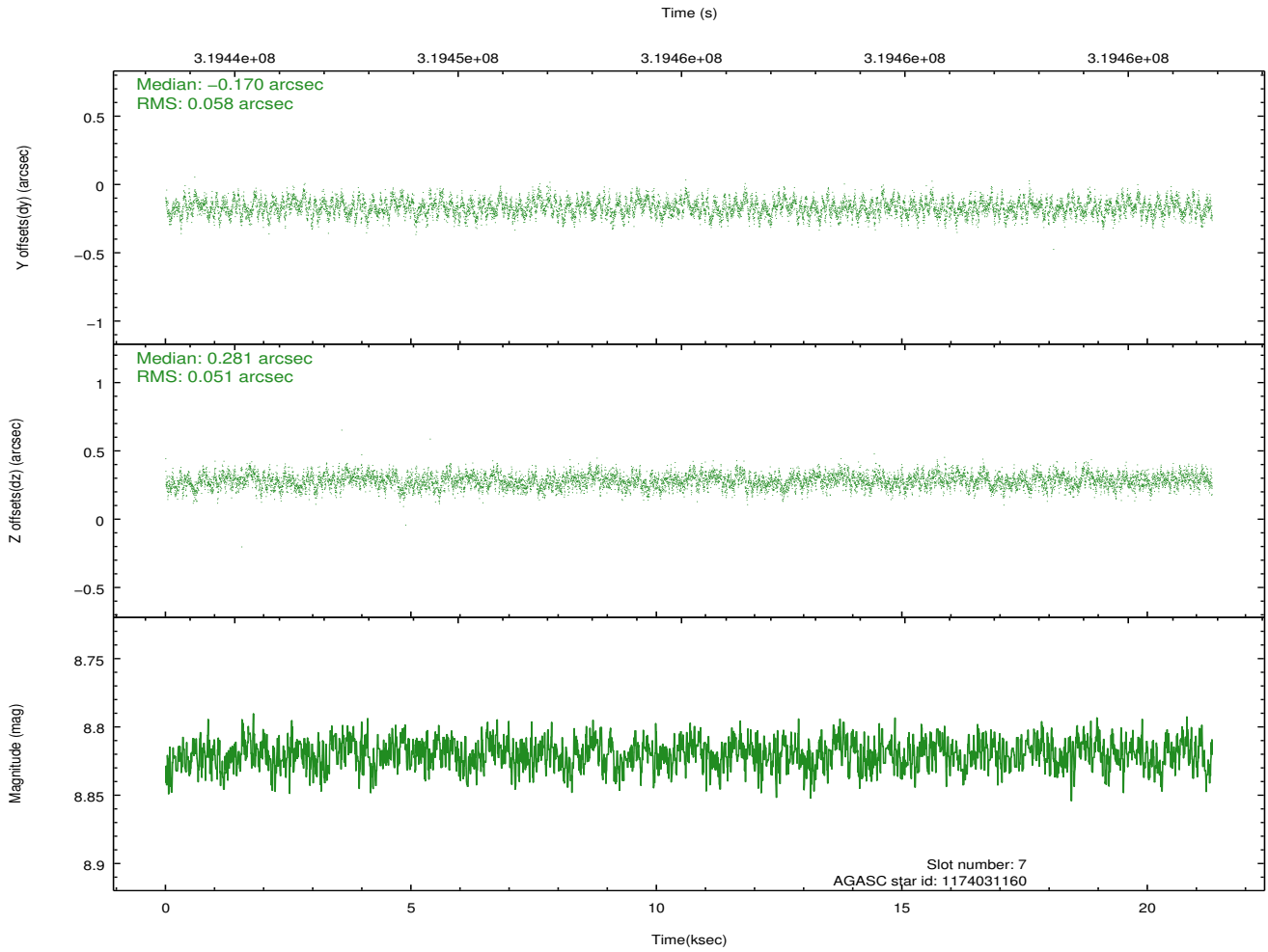
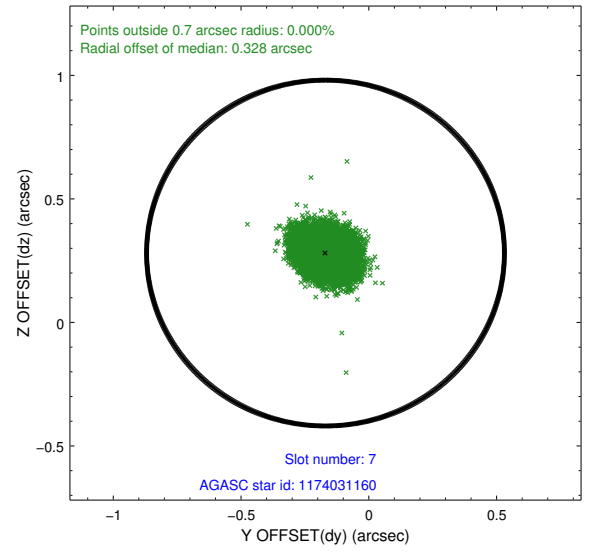
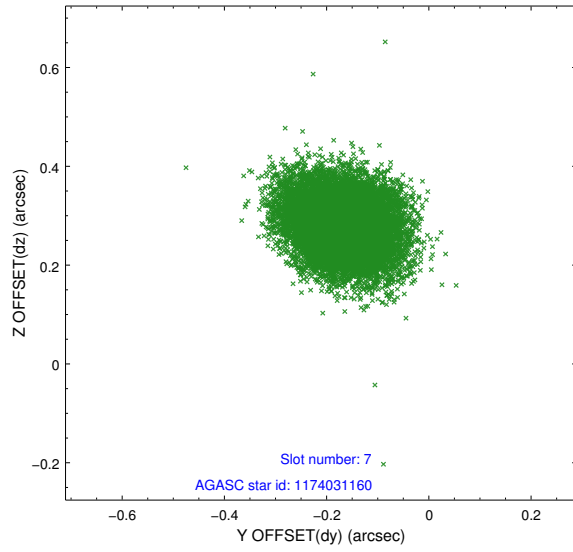
2.4.3 Slot 5



2.4.4 Slot 6

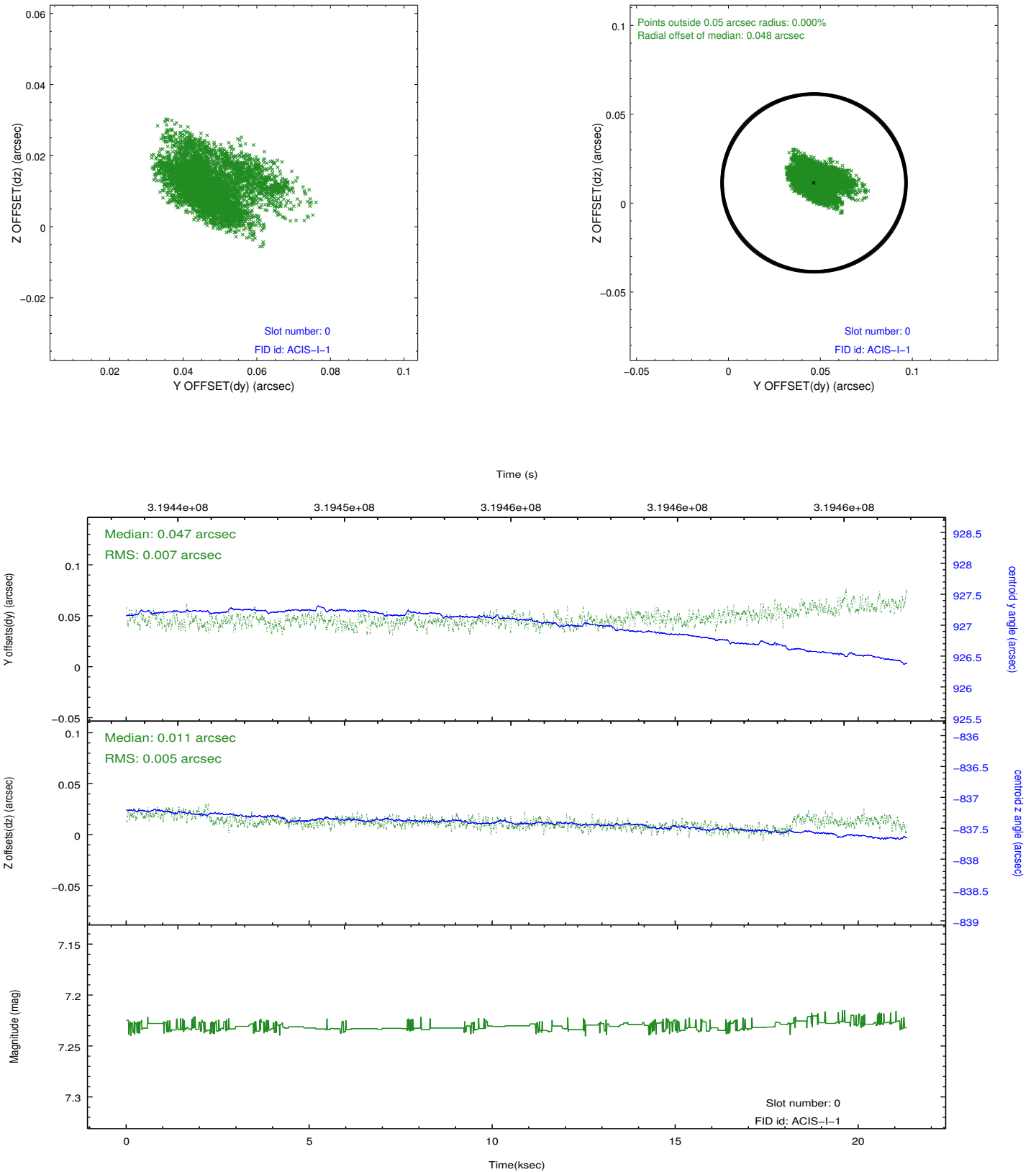


2.4.5 Slot 7

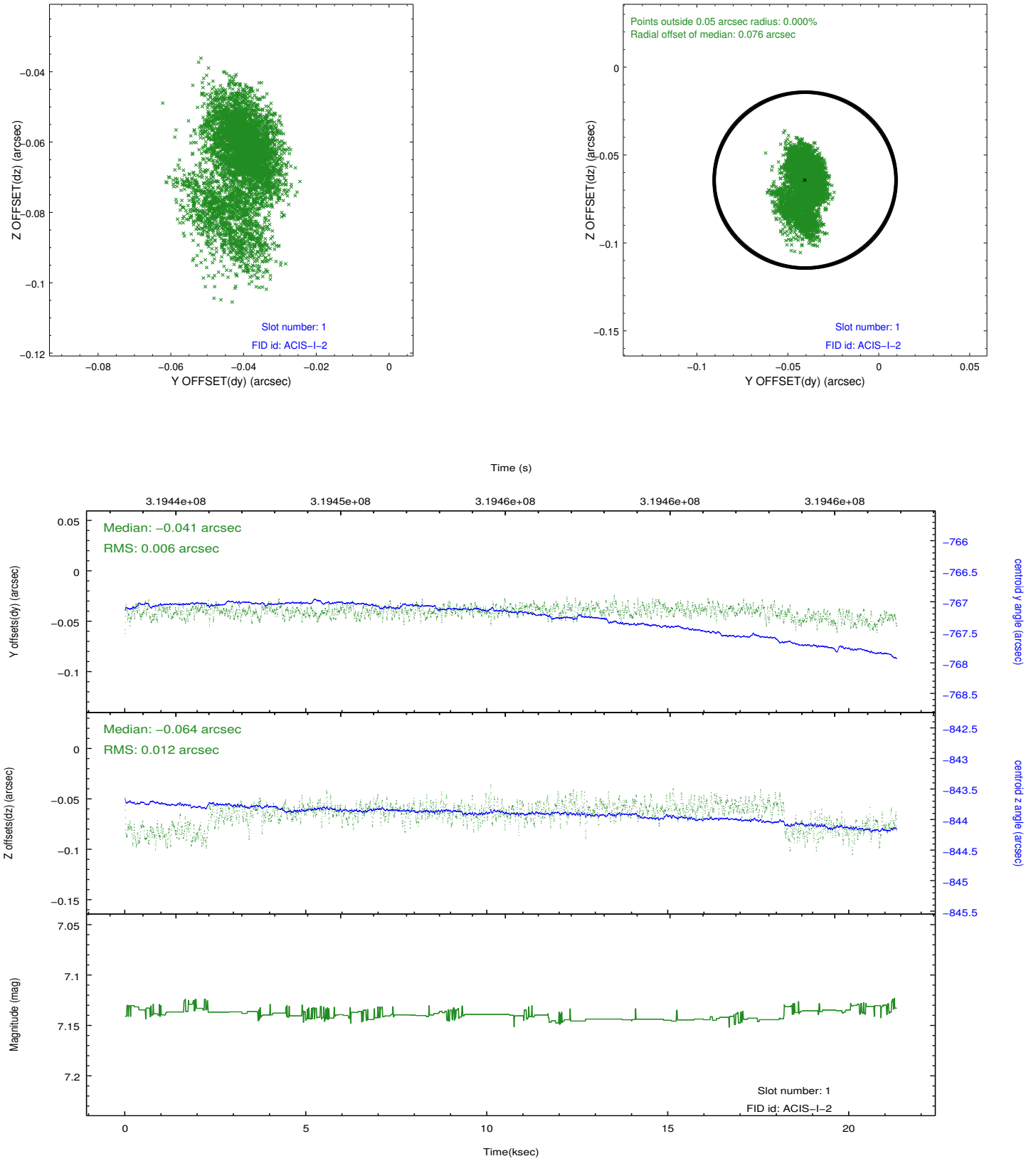


2.5 FID Slots

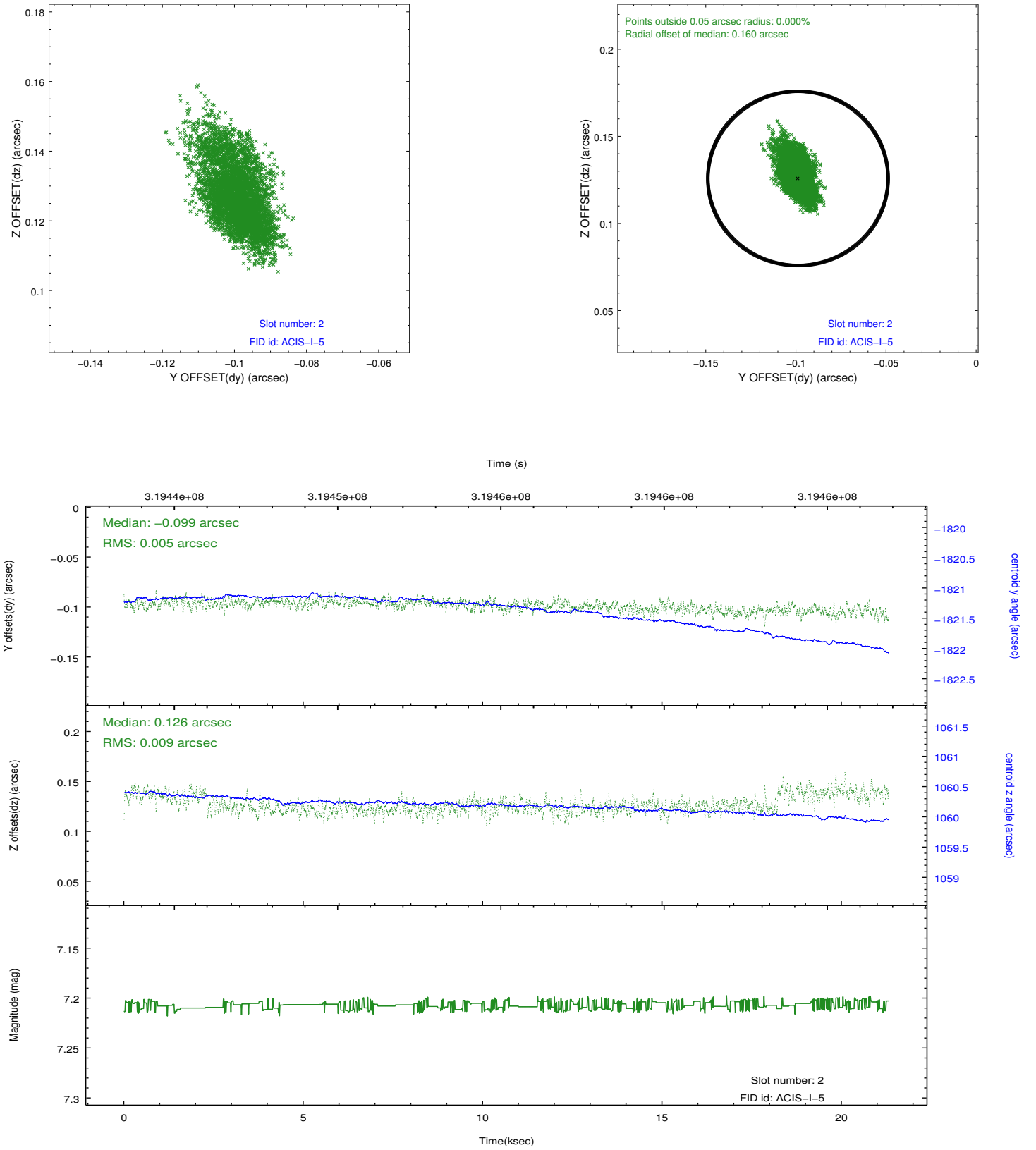
2.5.1 Slot 0



2.5.2 Slot 1



2.5.3 Slot 2



A Summary

A.1 Status

V&V Scientist	Jen Lauer
V&V Date (YYYY-MM-DD)	2012.05.11
V&V Edition	1
V&V Disposition and Status	OK
V&V Charge Time	21.0335179

A.2 Comments