

V&V Reference Report

L2 ASCDS Version : 8.4.4

Observation 8635 - L2 Version 2
Chandra X-Ray Center

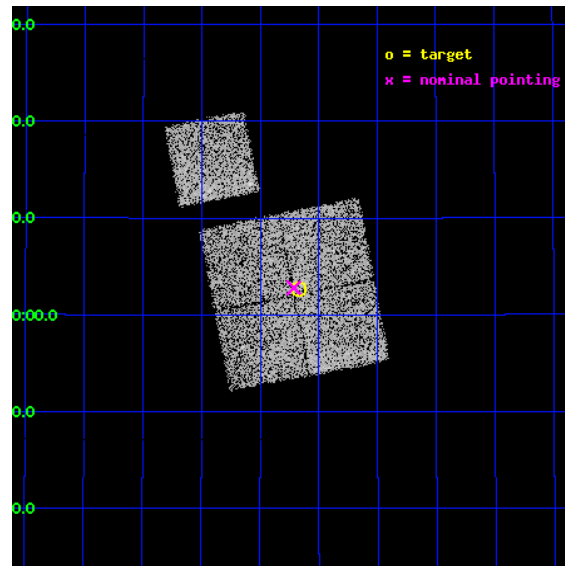
L2 Processing Date : May 5 2012

Contents

1	Front	2
2	OBI	3
2.1	OBI	3
2.1.1	Images	3
2.1.2	Bias	3
2.1.3	Parameters	4
2.1.4	Events	4
2.2	Compared Parameters	5
2.3	Aspect	6
2.4	Star Slots	9
2.4.1	Slot 3	9
2.4.2	Slot 4	10
2.4.3	Slot 5	11
2.4.4	Slot 6	12
2.4.5	Slot 7	13
2.5	FID Slots	14
2.5.1	Slot 0	14
2.5.2	Slot 1	15
2.5.3	Slot 2	16
A	Summary	17
A.1	Status	17
A.2	Comments	17

1 Front

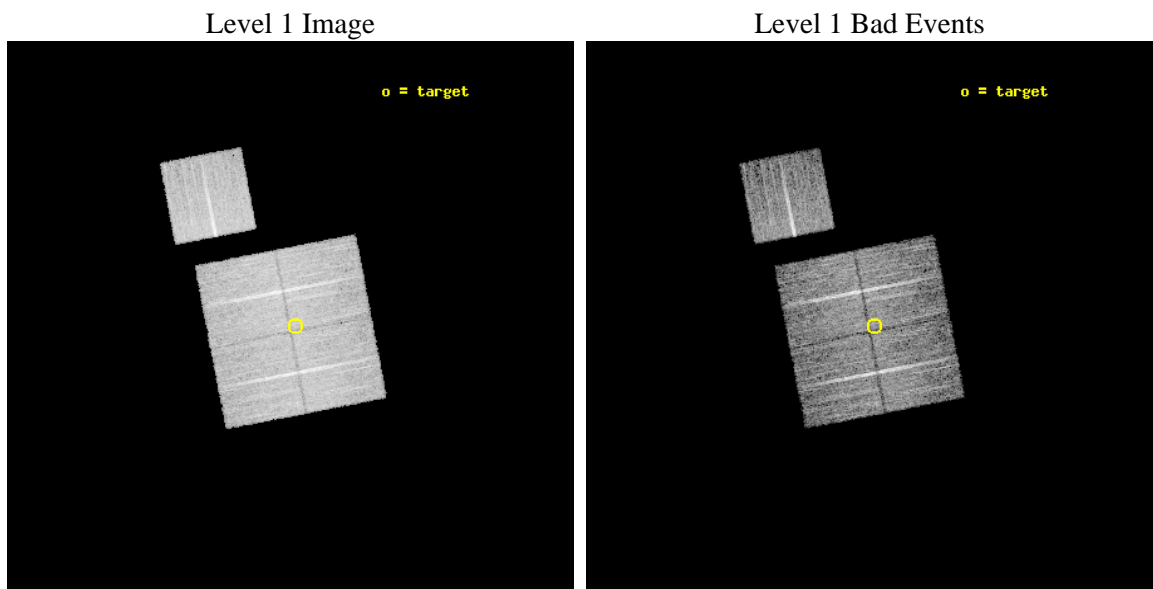
seq_num	900772	Sequence number
obs_id	8635	Observation id
title	Chandra Observations of the DEEP2 Fields	Proposal title
observer	Dr. Stephen Murray	Principal investigator
object	DEEP2 Field 2	Source name
dtcycle	0	
cycle	P	events from which exps? Prim/Second/Both
ra_targ	252.29343	Observer's specified target RA [deg]
dec_targ	35.045762	Observer's specified target Dec [deg]
ra_nom	252.30321513746	Nominal RA [deg]
dec_nom	35.046683556281	Nominal Dec [deg]
roll_nom	349.10306105514	Nominal Roll [deg]
revision	2	Processing version of data
ontime	8716.7193206549	Sum of GTIs [s]
livetime	8602.8289655751	Livetime [s]
ontime0	8716.5962305069	Sum of GTIs [s]
ontime1	8716.6372705102	Sum of GTIs [s]
ontime2	8710.3963499665	Sum of GTIs [s]
ontime3	8716.7193206549	Sum of GTIs [s]
ontime6	8716.5551905036	Sum of GTIs [s]
l2events	29158	Number of level 2 events



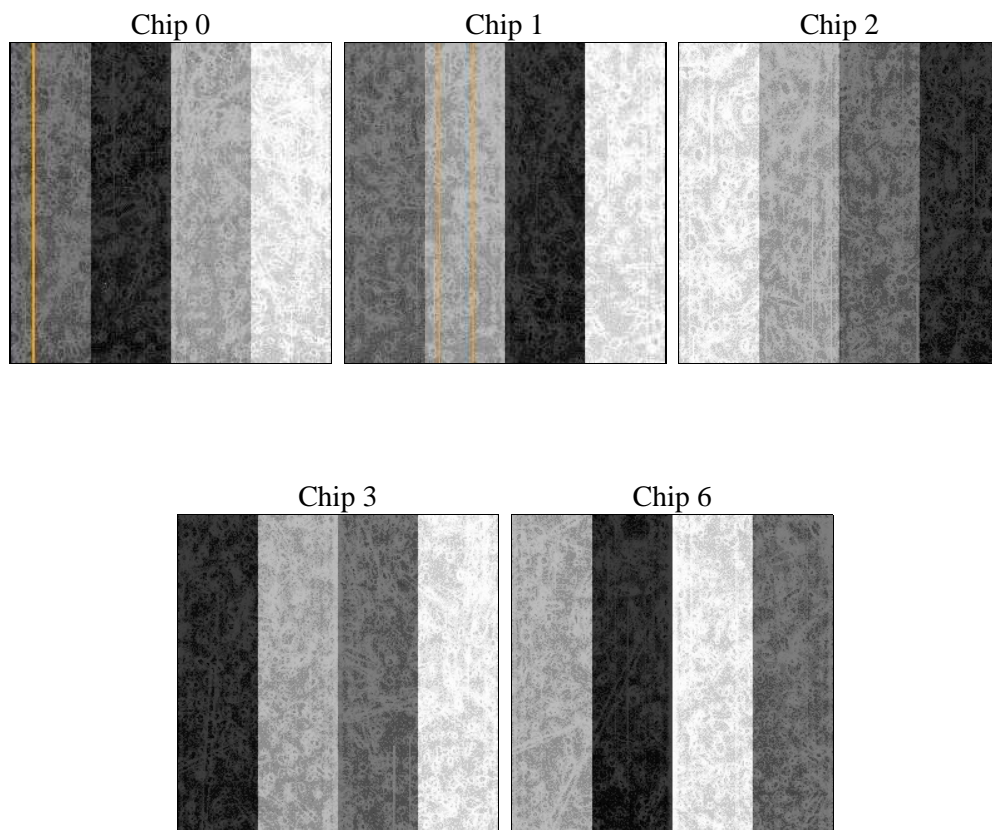
2 OBI

2.1 OBI

2.1.1 Images



2.1.2 Bias



2.1.3 Parameters

obi_num	0	Obi number	sched_exp_time	8941.000000	[s] Scheduled observation exposure time
ascdsver	8.4.4	Processing system revision	ontime	8716.7193206549	Sum of GTIs [s]
caldsver	4.4.9	 	ontime0	8716.5962305069	Sum of GTIs [s]
date	2012-05-05T05:19:03	Date and time of file creation	ontime1	8716.6372705102	Sum of GTIs [s]
revision	2	Processing version of data	ontime2	8710.3963499665	Sum of GTIs [s]
			ontime3	8716.7193206549	Sum of GTIs [s]
			ontime6	8716.5551905036	Sum of GTIs [s]
			l1events	337707	Number of level 1 events

2.1.4 Events

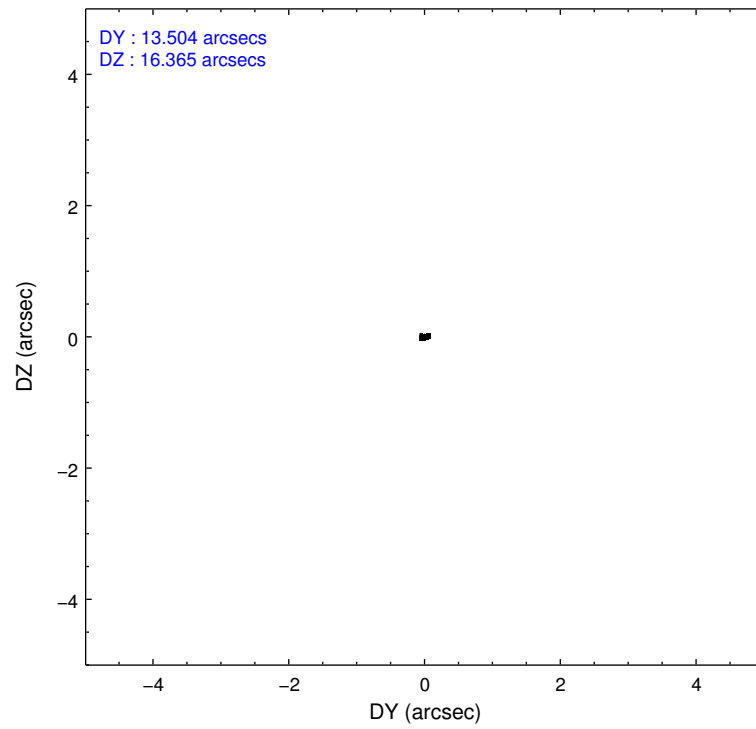
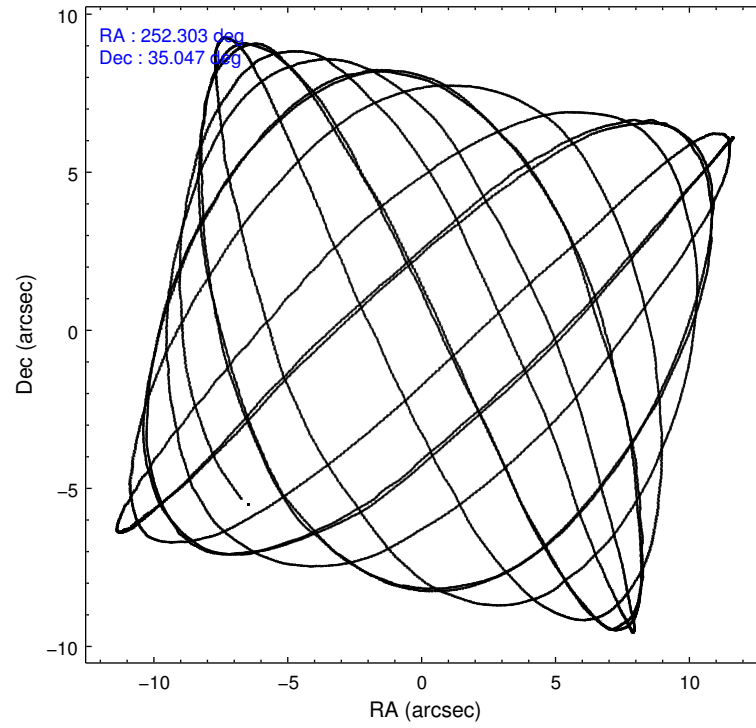
	ccd 0	ccd 1	ccd 2	ccd 3	ccd 6
level 1 events	63947	65433	70610	67563	70154
rejected events	57070	57677	63691	61009	63015
rejected %	89%	88%	90%	90%	89%

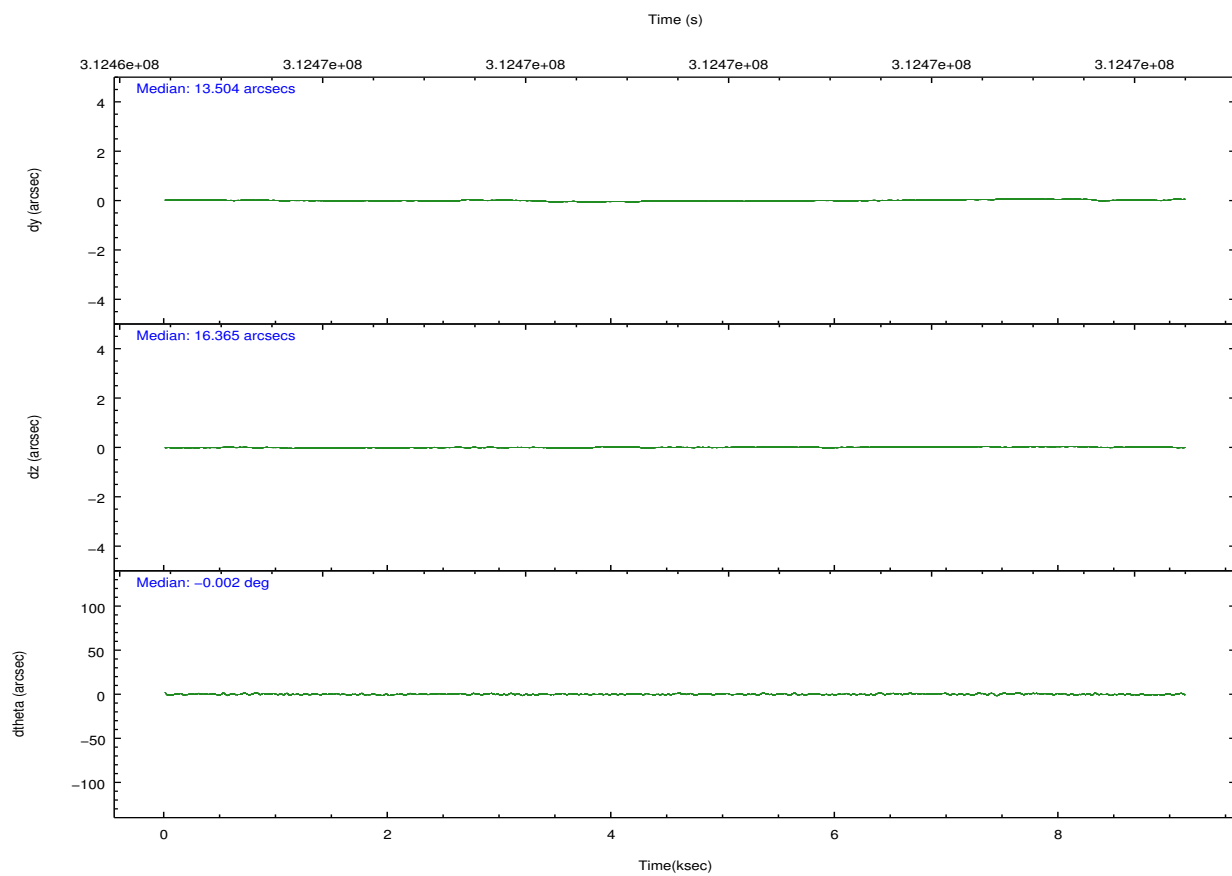
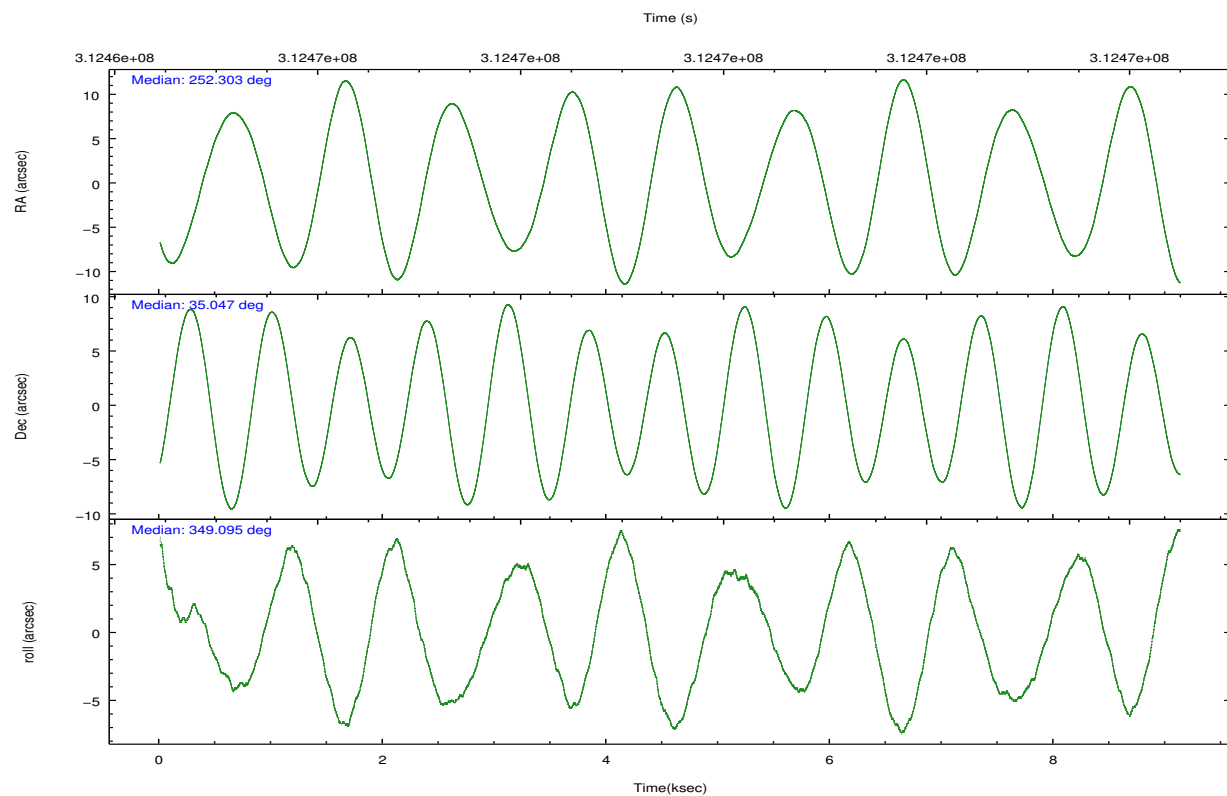
	ccd 0	ccd 1	ccd 2	ccd 3	ccd 6
grade 0 events	2301	2767	2372	2343	2556
	3%	4%	3%	3%	3%
grade 1 events	43	40	30	37	31
	0%	0%	0%	0%	0%
grade 2 events	1666	1741	1696	1386	1549
	2%	2%	2%	2%	2%
grade 3 events	826	853	799	747	757
	1%	1%	1%	1%	1%
grade 4 events	740	819	790	734	835
	1%	1%	1%	1%	1%
grade 5 events	2465	2741	2376	2777	2688
	3%	4%	3%	4%	3%
grade 6 events	1348	1584	1265	1347	1447
	2%	2%	1%	1%	2%
grade 7 events	54558	54888	61282	58192	60291
	85%	83%	86%	86%	85%

2.2 Compared Parameters

Parameter	Planned	Actual	Parameter	Planned	Actual
Instrument	ACIS	ACIS	Obspar format version number	7	7
Detector	ACIS-01236	ACIS-01236	Obspar file type	PREDICTED	ACTUAL
Grating	NONE	NONE	Obspar update status	NONE	UPDATED
Data mode	VFAINT	VFAINT	CCD I0 on	Y	Y
Observation mode	POINTING	POINTING	CCD I1 on	Y	Y
[deg] Pointing RA	252.271552	252.303215137464	CCD I2 on	Y	Y
[deg] Pointing Dec	35.037551	35.04668355628069	CCD I3 on	Y	Y
[deg] Pointing Roll	348.912563	349.1030610551402	CCD S0 on	N	N
[mm] SIM focus pos	-0.782348	-0.7809083437167272	CCD S1 on	N	N
[mm] SIM defocus	0	0.001439871863259334	CCD S2 on	O1	Y
[mm] SIM translation stage pos	-233.592463	-233.5874344608287	CCD S3 on	N	N
[mm] SIM translation stage offset	0	-0.005018542100998502	CCD S4 on	N	N
[s] Observation start time (MET)	312465091.184000	312464715.12952	CCD S5 on	N	N
Observation start date	2007-11-26T11:50:26	2007-11-26T11:45:15	Number of optional ACIS chips dropped	0	0
[s] Observation end time (MET)	312474032.184000	312474166.65498	On-chip summing requested	N	N
Observation end date	2007-11-26T14:19:27	2007-11-26T14:22:46	Subarray requested	NONE	NONE
Read mode	TIMED	TIMED	Alternating exposures requested	N	N
			[s] Primary exposure time	0.000000	3.1

2.3 Aspect



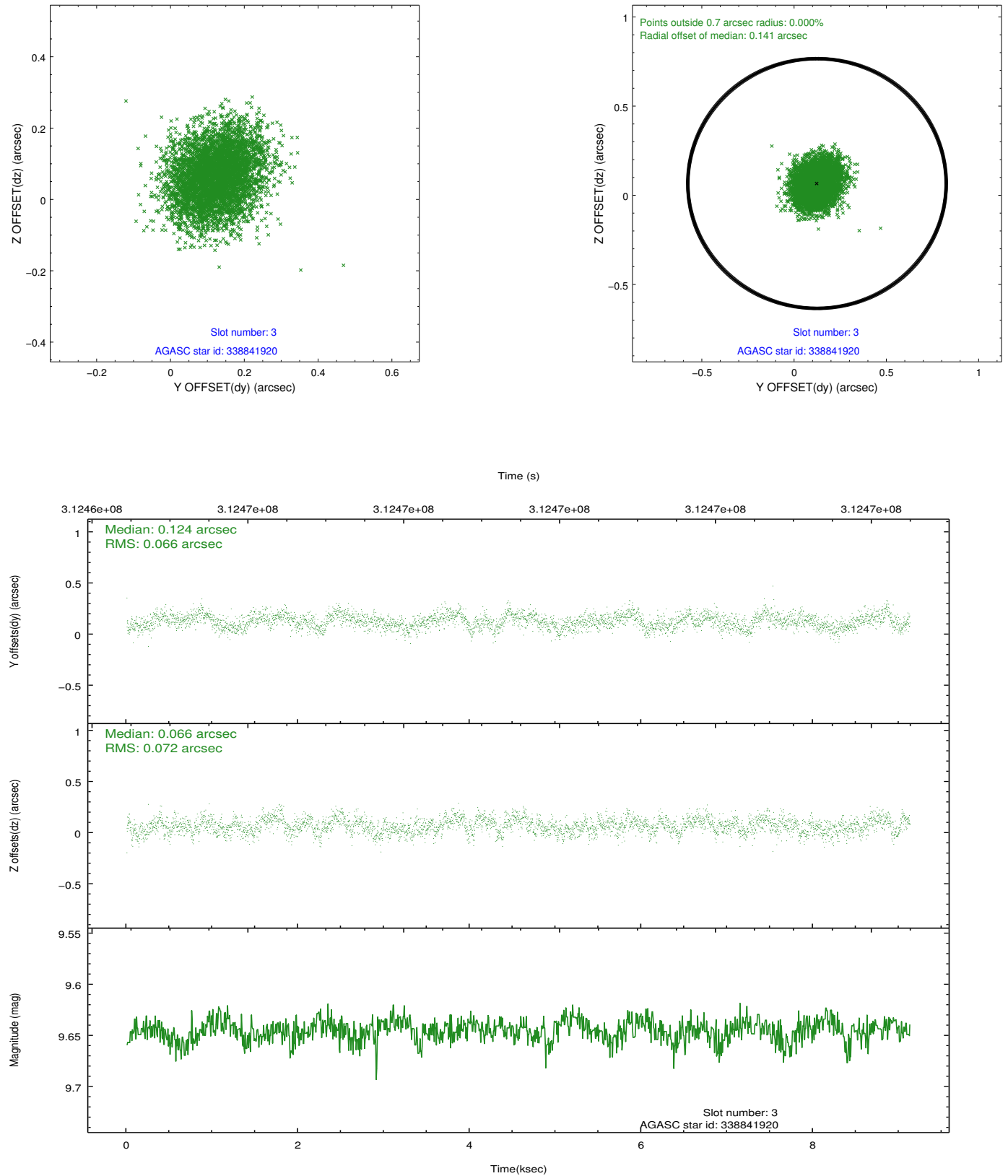


Slot Statistics

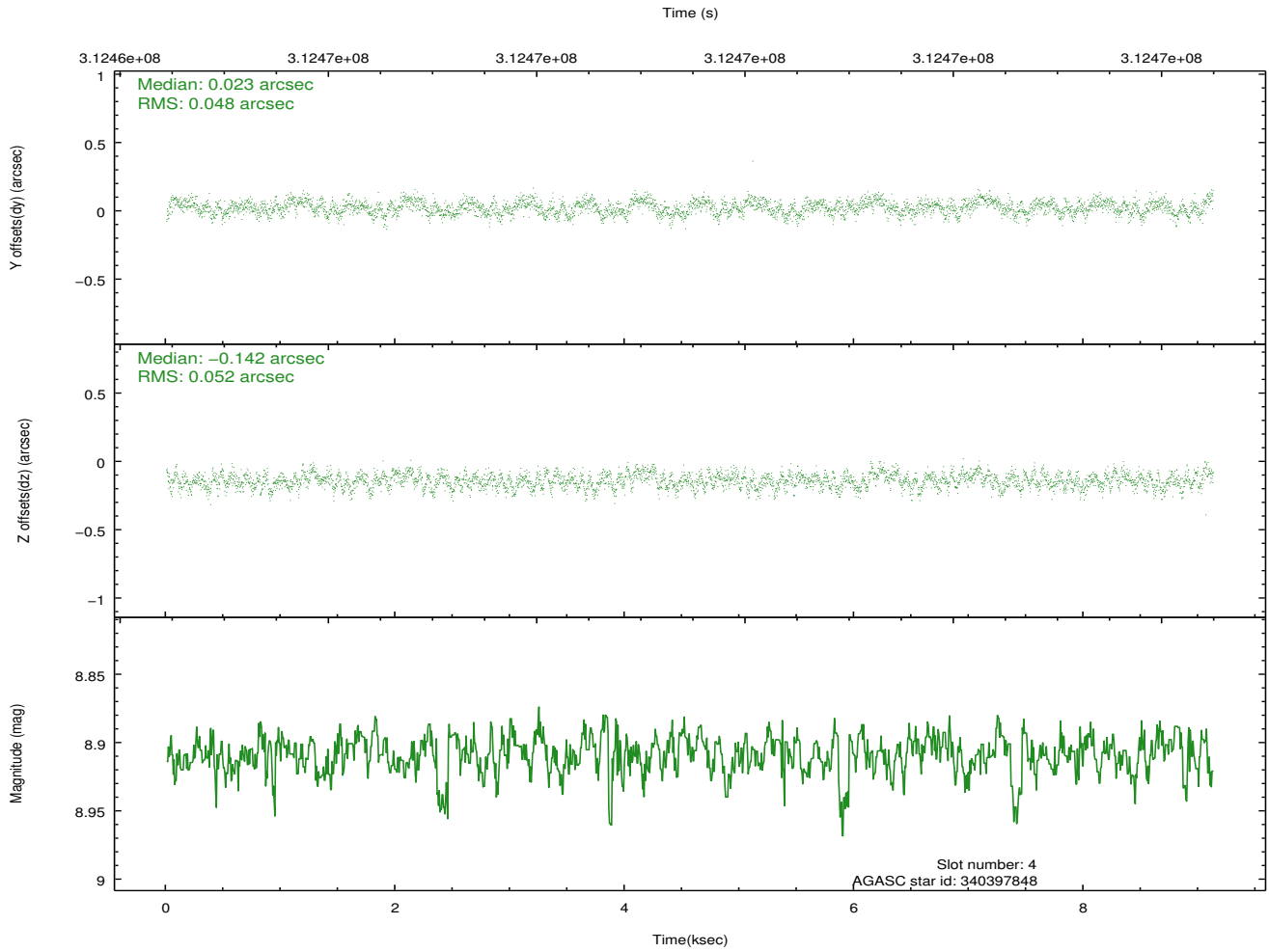
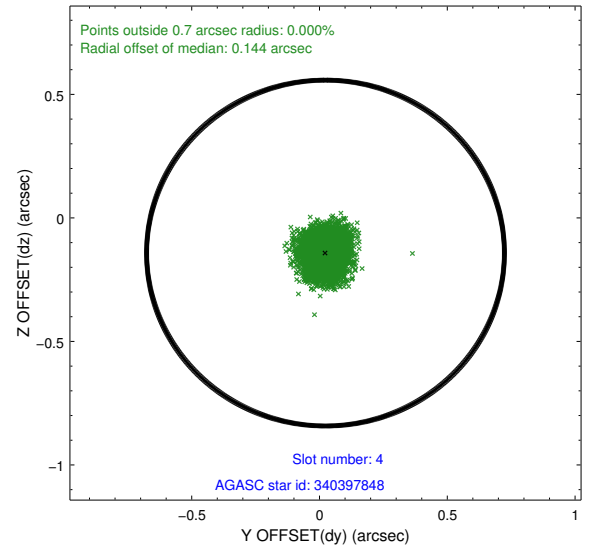
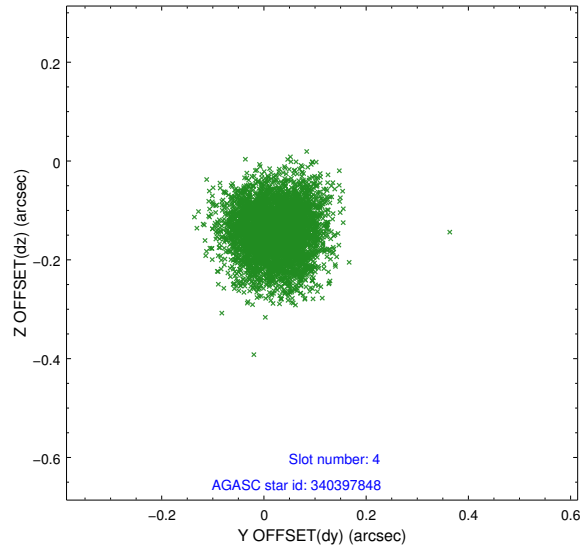
slot	status	id	mag	n_pts	med_dy	med_dz	dr1	dr2	ra	dec	mean_y	mean_z
0	FID	ACIS-I-1	7.22	2226	-0.006	-0.091	0.008	0.014	0.000000	0.000000	925.98	-840.10
1	FID	ACIS-I-4	7.15	2226	0.162	0.089	0.008	0.013	0.000000	0.000000	2146.54	1059.57
2	FID	ACIS-I-5	7.22	2226	-0.255	0.072	0.006	0.012	0.000000	0.000000	-1821.48	1058.13
3	GUIDE	338841920	9.65	4442	0.124	0.066	0.105	0.168	251.583822	34.717471	-1776.09	-1515.58
4	GUIDE	340397848	8.91	4447	0.023	-0.142	0.076	0.121	252.880784	35.553189	1392.84	2169.83
5	GUIDE	340398976	7.00	4452	-0.115	-0.105	0.067	0.105	253.047352	35.489638	1917.29	2043.78
6	GUIDE	340401160	9.32	4449	-0.062	0.209	0.117	0.181	252.460112	35.243739	401.88	836.19
7	GUIDE	340405600	8.13	4448	0.025	-0.023	0.084	0.131	252.813465	34.289368	2099.32	-2327.88

2.4 Star Slots

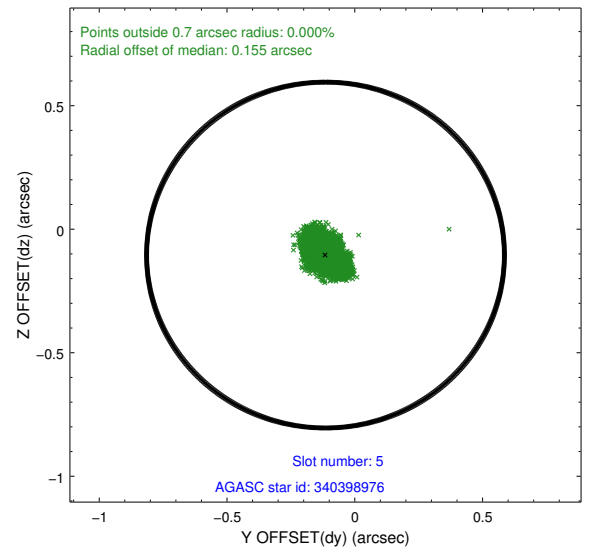
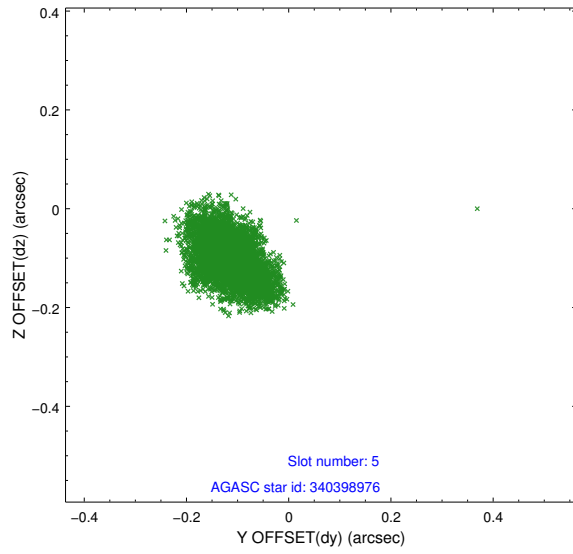
2.4.1 Slot 3



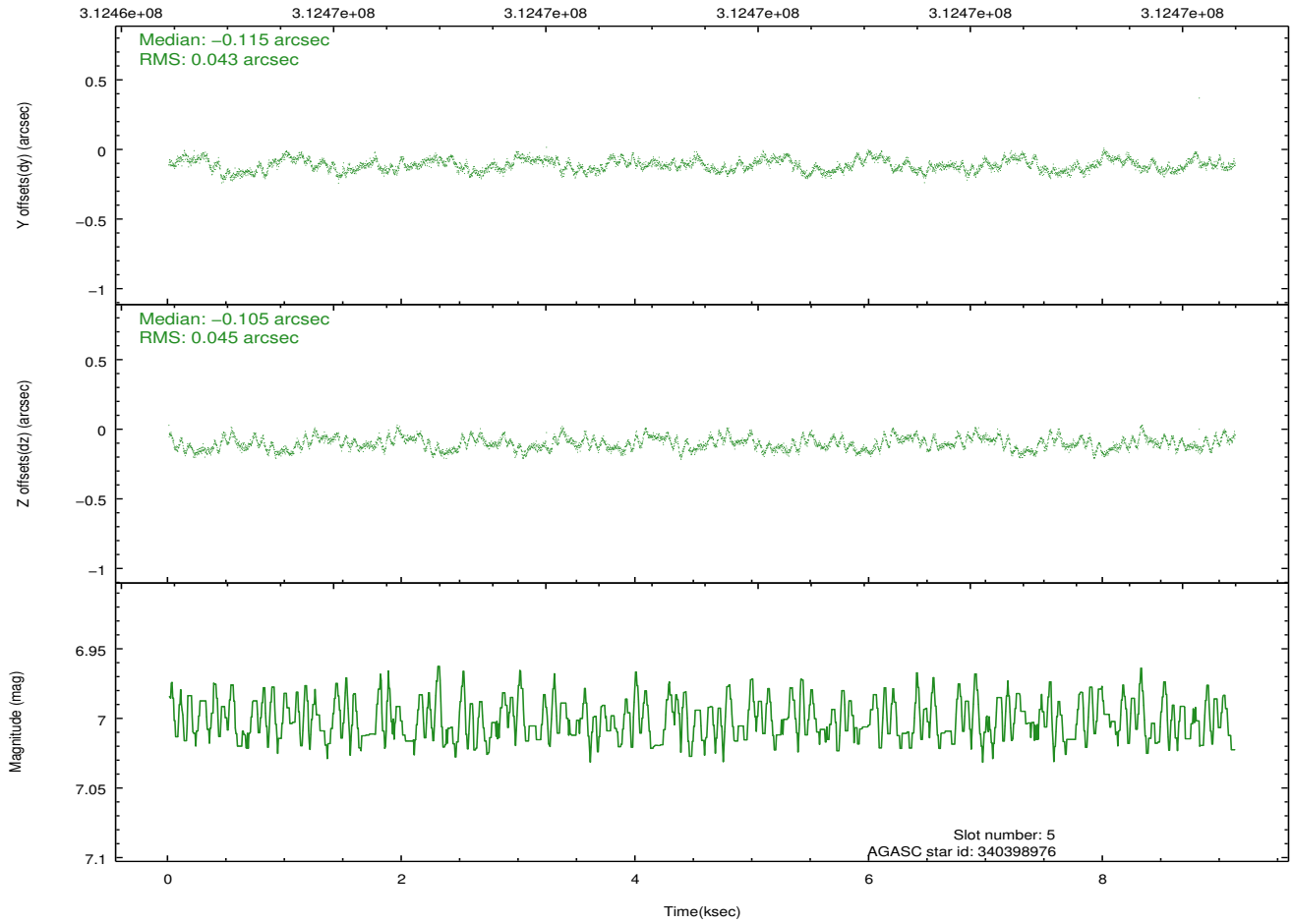
2.4.2 Slot 4



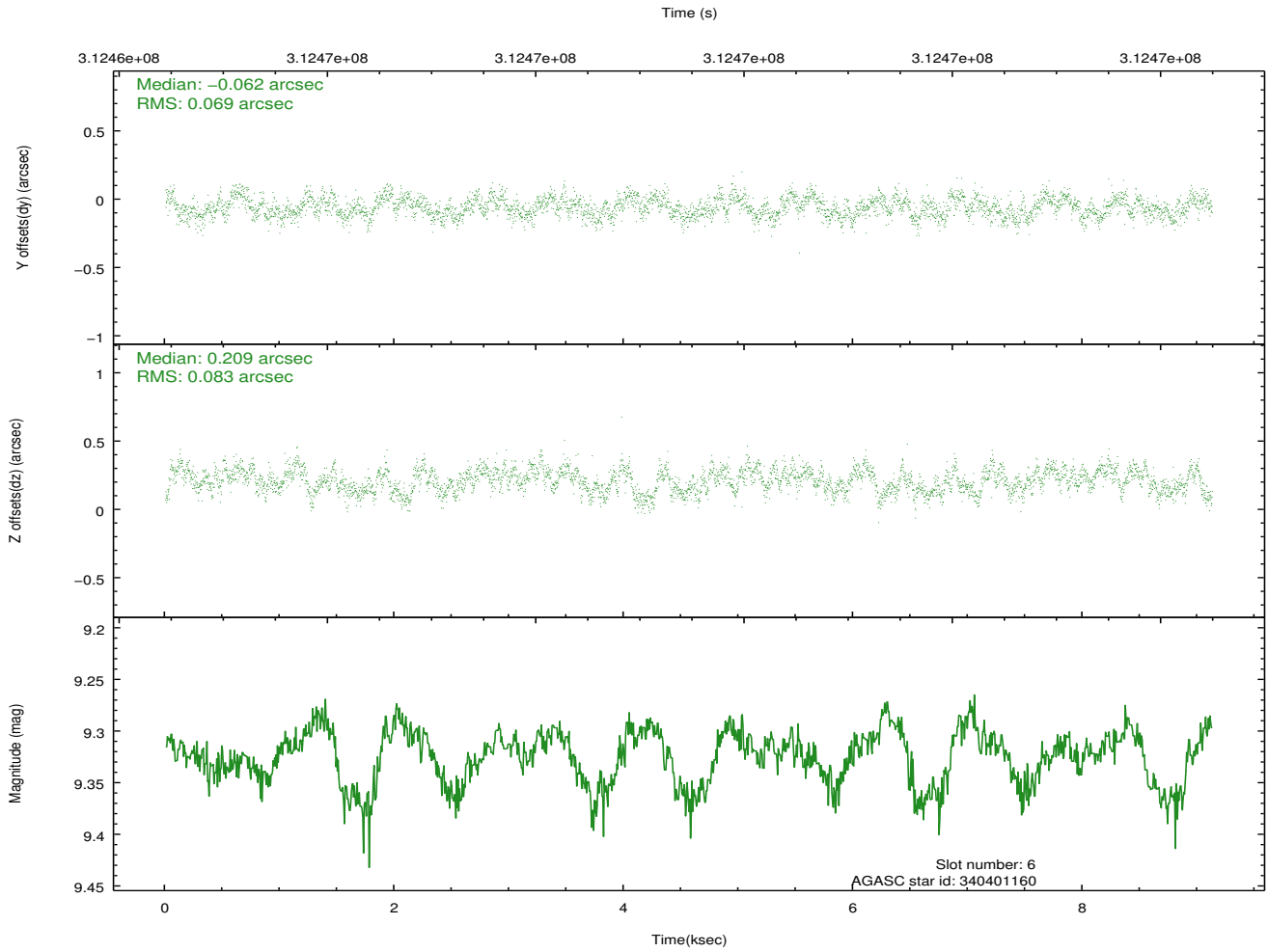
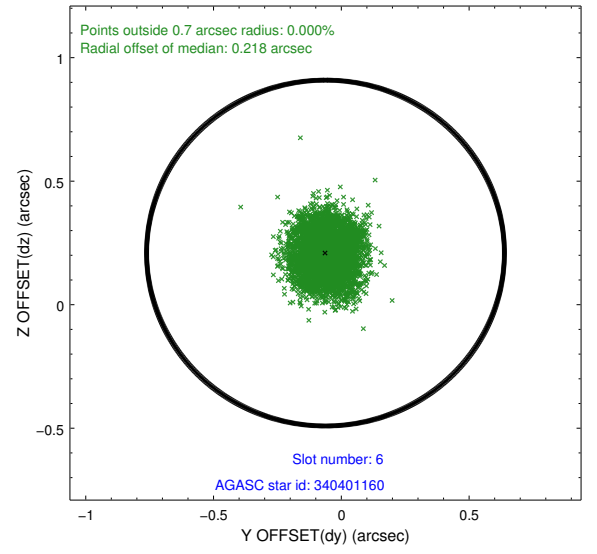
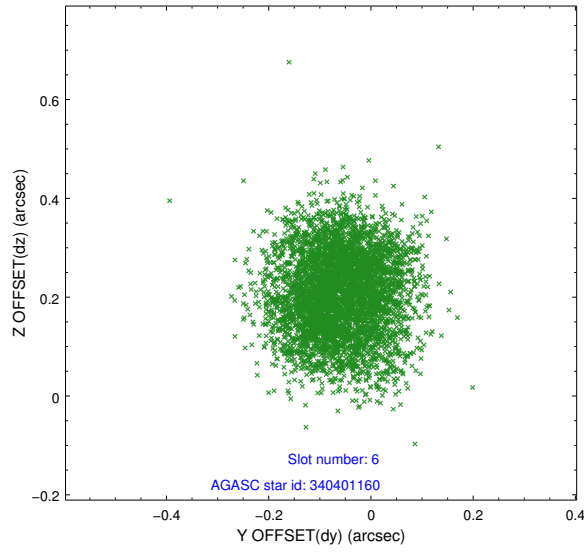
2.4.3 Slot 5



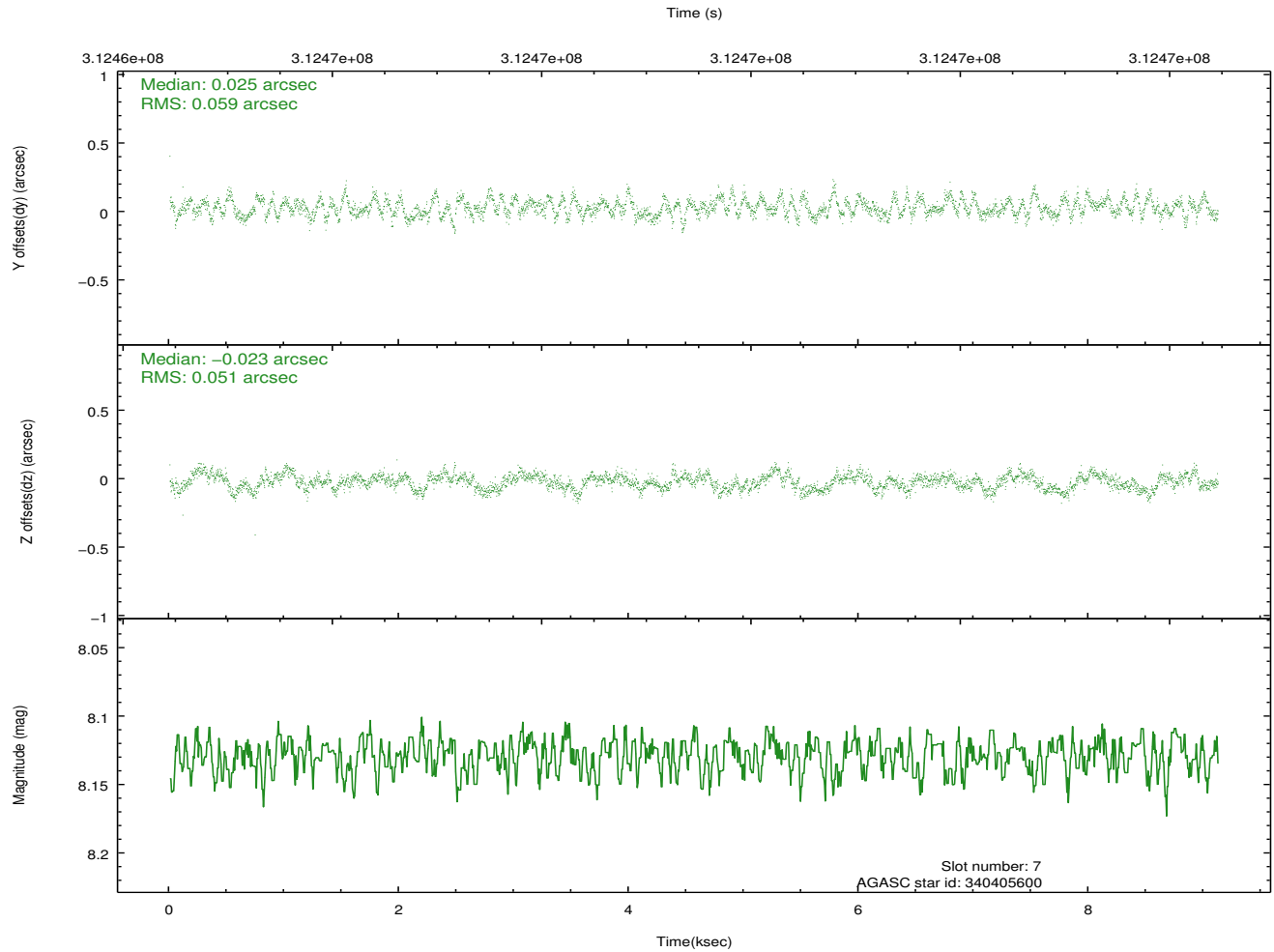
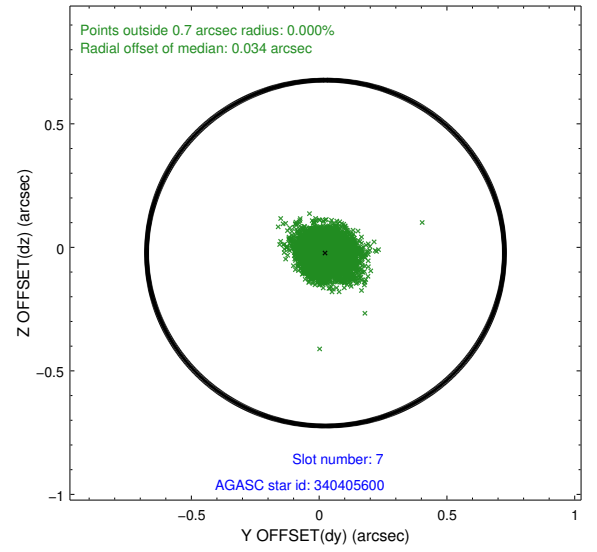
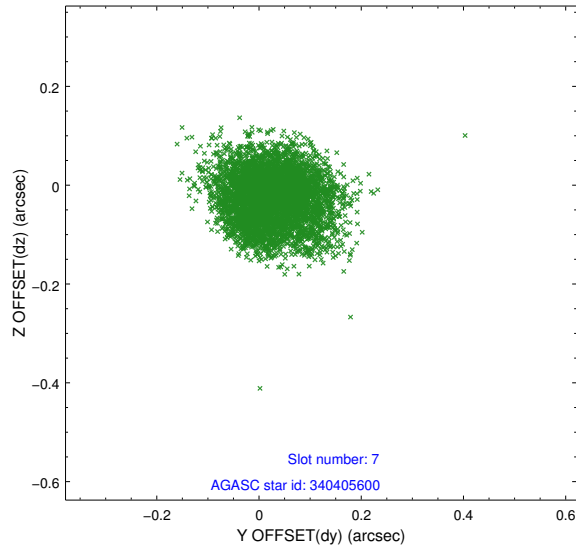
Time (s)



2.4.4 Slot 6

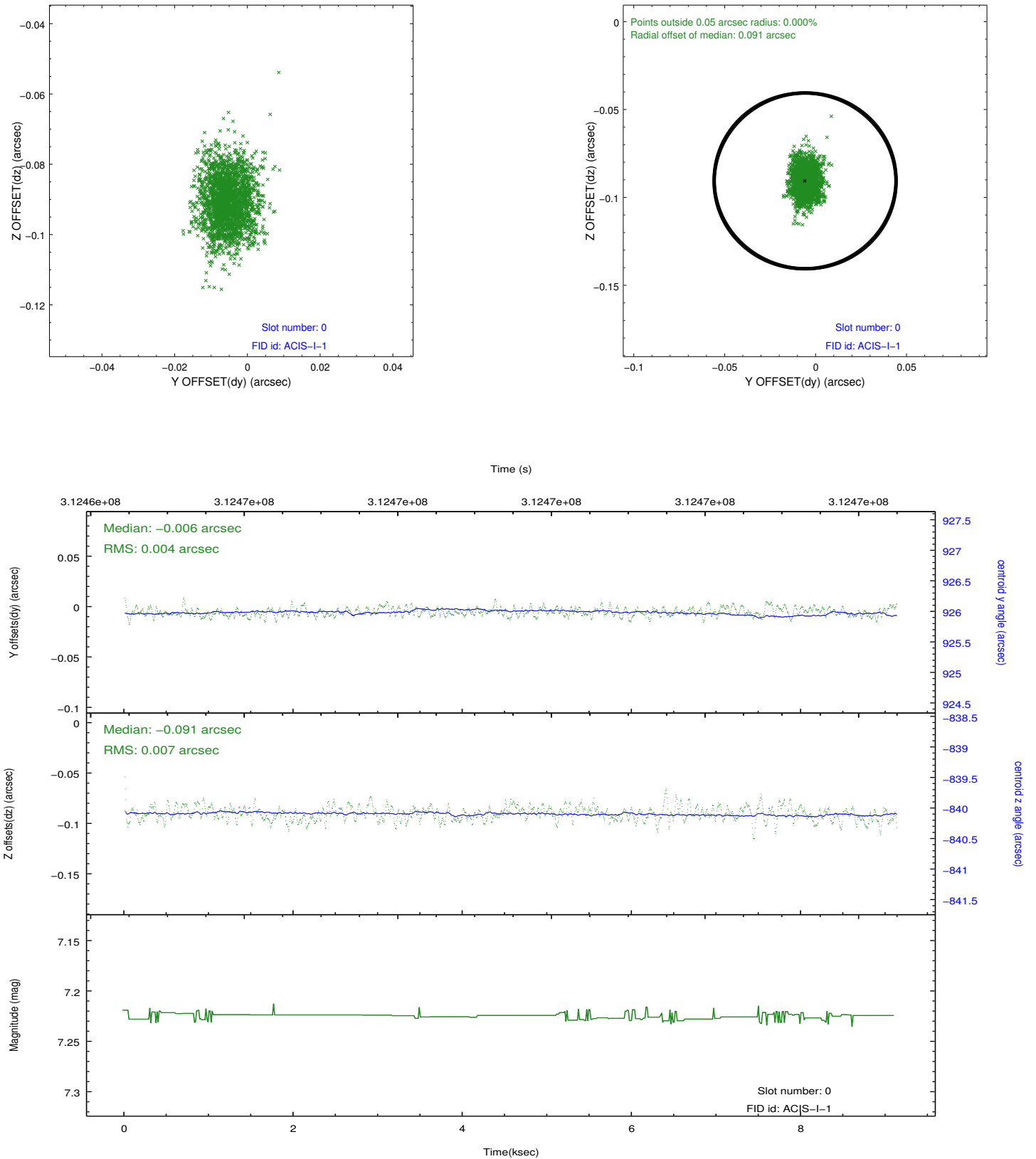


2.4.5 Slot 7

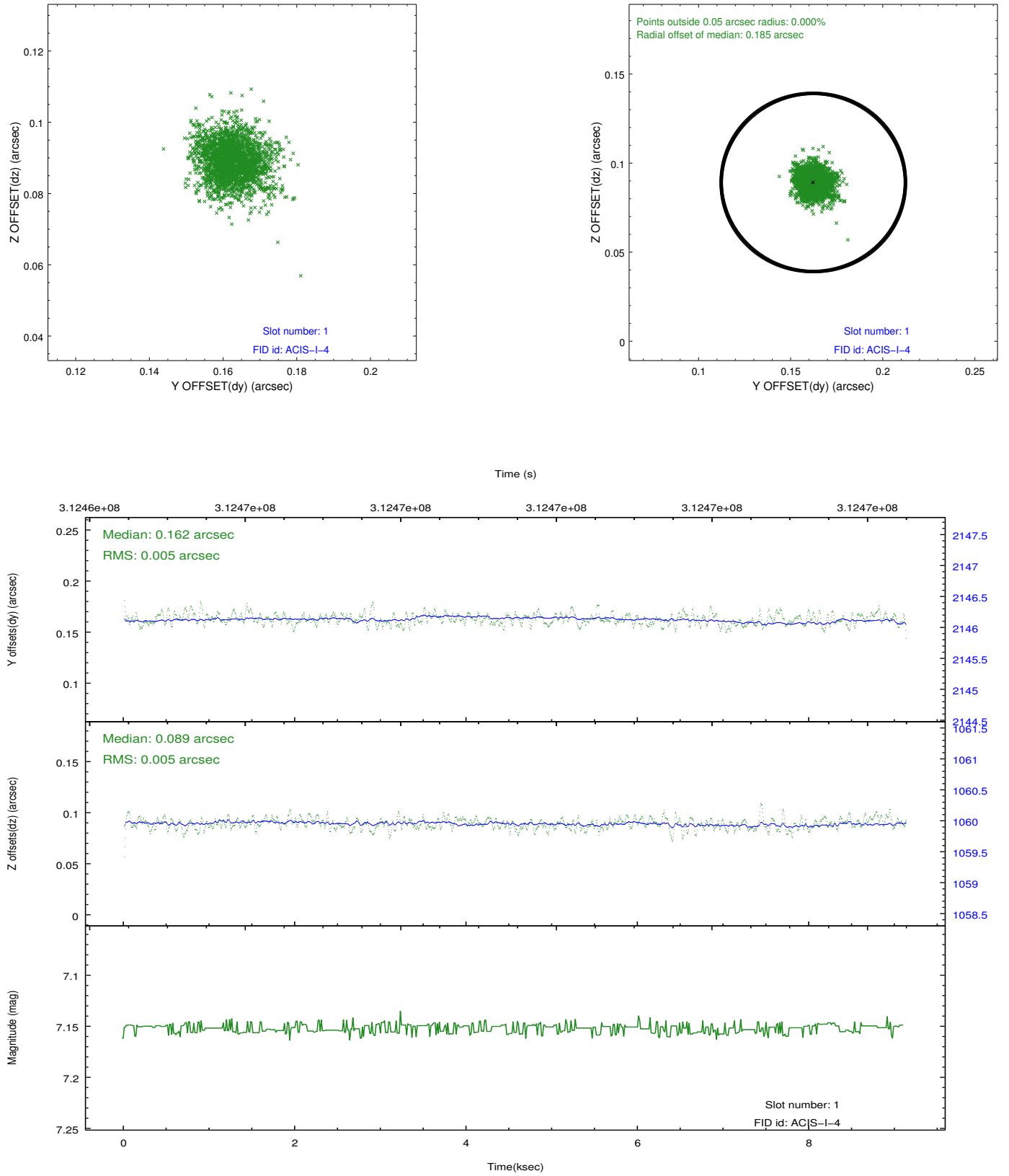


2.5 FID Slots

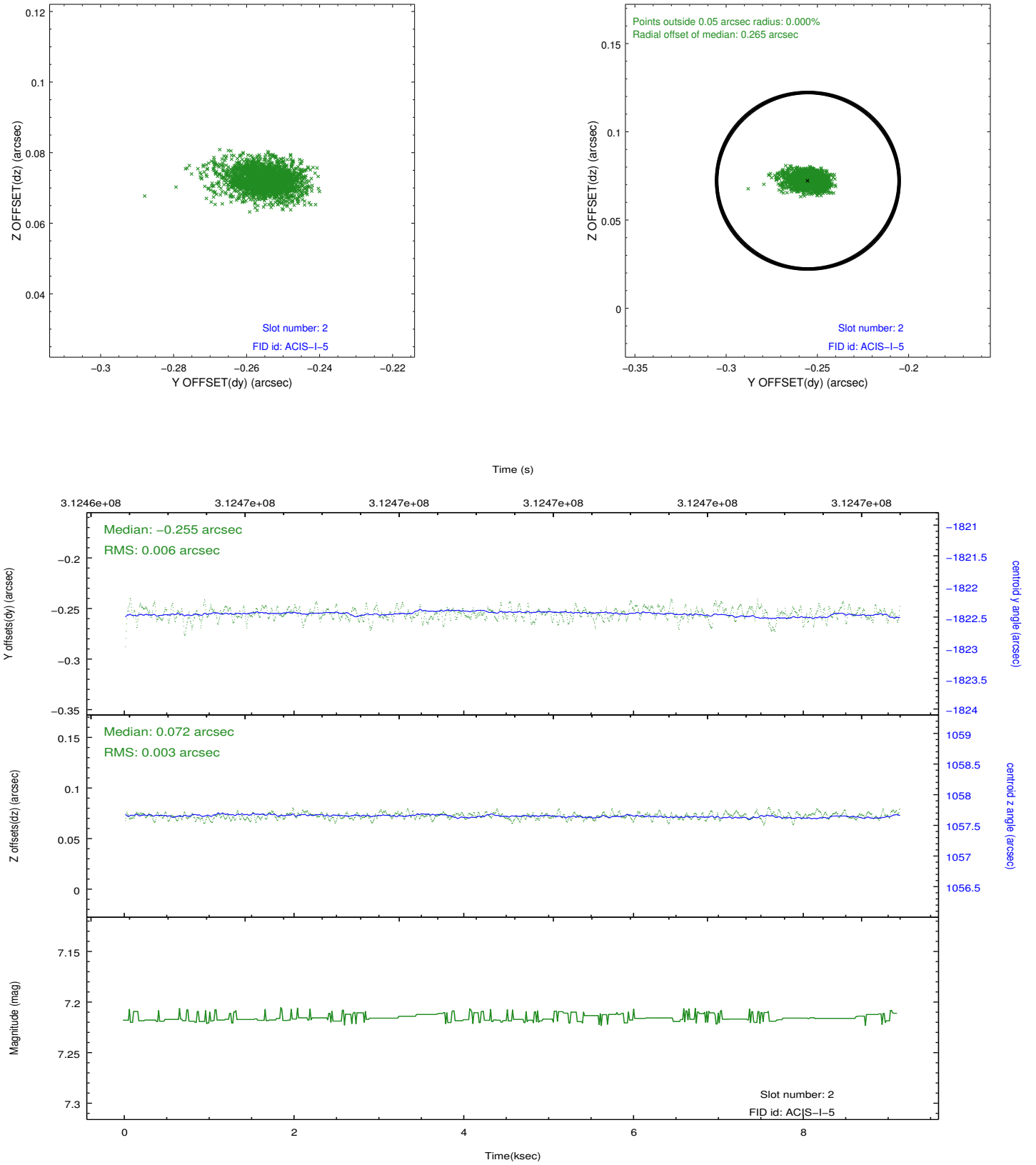
2.5.1 Slot 0



2.5.2 Slot 1



2.5.3 Slot 2



A Summary

A.1 Status

V&V Scientist	Jen Lauer
V&V Date (YYYY-MM-DD)	2012.05.07
V&V Edition	1
V&V Disposition and Status	OK
V&V Charge Time	8.71720006

A.2 Comments