

V&V Reference Report

L2 ASCDS Version : 8.4.4

Observation 8617 - L2 Version 2
Chandra X-Ray Center

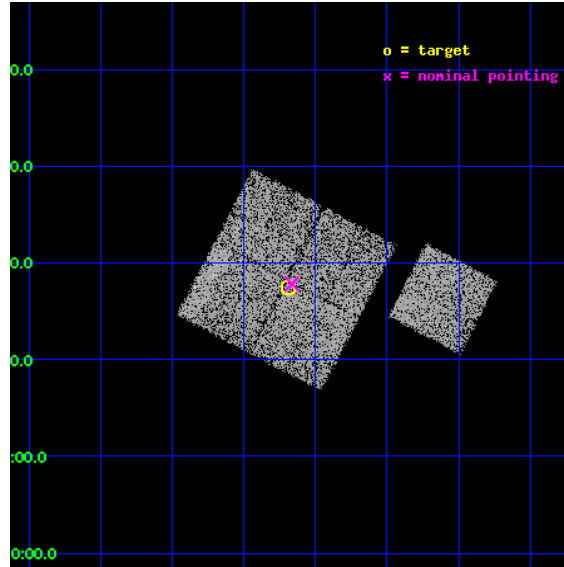
L2 Processing Date : May 19 2012

Contents

1	Front	2
2	OBI	3
2.1	OBI	3
2.1.1	Images	3
2.1.2	Bias	3
2.1.3	Parameters	4
2.1.4	Events	4
2.2	Compared Parameters	5
2.3	Aspect	6
2.4	Star Slots	9
2.4.1	Slot 3	9
2.4.2	Slot 4	10
2.4.3	Slot 5	11
2.4.4	Slot 6	12
2.4.5	Slot 7	13
2.5	FID Slots	14
2.5.1	Slot 0	14
2.5.2	Slot 1	15
2.5.3	Slot 2	16
A	Summary	17
A.1	Status	17
A.2	Comments	17

1 Front

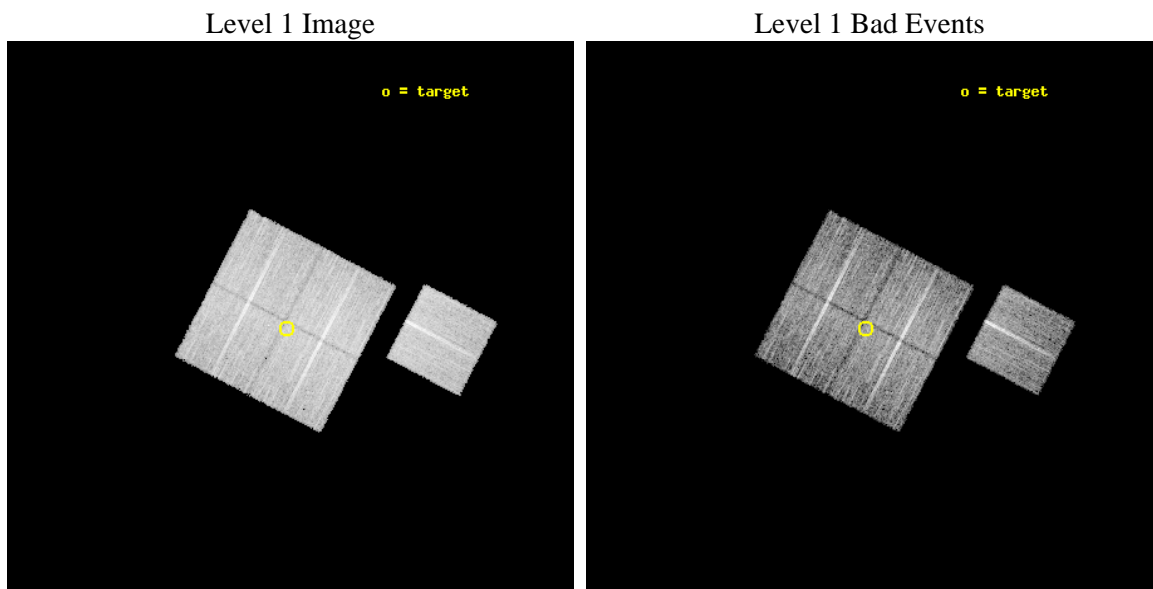
seq_num	900754	Sequence number
obs_id	8617	Observation id
title	Chandra Observations of the DEEP2 Fields	Proposal title
observer	Dr. Stephen Murray	Principal investigator
object	DEEP2 Field 3	Source name
dtcycle	0	
cycle	P	events from which exps? Prim/Second/Both
ra_targ	352.42188	Observer's specified target RA [deg]
dec_targ	0.291396	Observer's specified target Dec [deg]
ra_nom	352.41615582742	Nominal RA [deg]
dec_nom	0.2971228823486	Nominal Dec [deg]
roll_nom	117.50872252607	Nominal Roll [deg]
revision	2	Processing version of data
ontime	8955.9000688791	Sum of GTIs [s]
livetime	8838.8846412415	Livetime [s]
ontime0	8952.7590884566	Sum of GTIs [s]
ontime1	8955.9000688791	Sum of GTIs [s]
ontime2	8952.7590785623	Sum of GTIs [s]
ontime3	8955.9000688791	Sum of GTIs [s]
ontime6	8955.9000688791	Sum of GTIs [s]
l2events	30763	Number of level 2 events



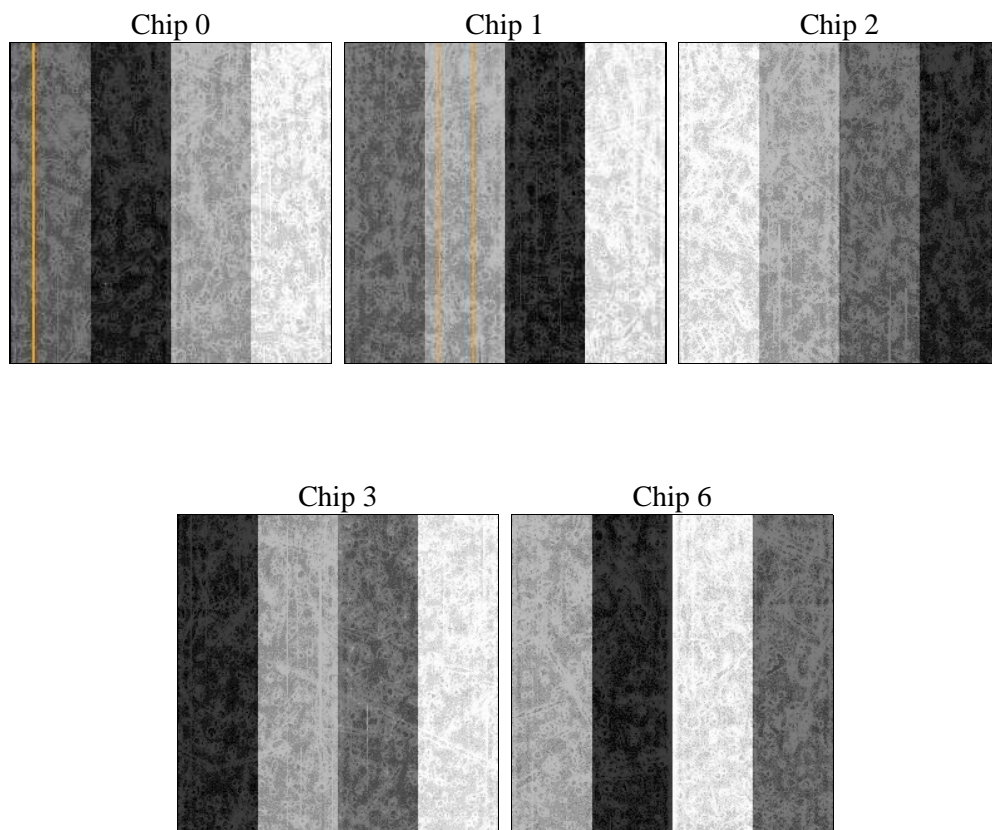
2 OBI

2.1 OBI

2.1.1 Images



2.1.2 Bias



2.1.3 Parameters

obi_num	0	Obi number	sched_exp_time	8771.000000	[s] Scheduled observation exposure time
ascdsver	8.4.4	Processing system revision	ontime	8955.9000688791	Sum of GTIs [s]
caldsver	4.4.9	 	ontime0	8952.7590884566	Sum of GTIs [s]
date	2012-05-19T02:10:50	Date and time of file creation	ontime1	8955.9000688791	Sum of GTIs [s]
revision	2	Processing version of data	ontime2	8952.7590785623	Sum of GTIs [s]
			ontime3	8955.9000688791	Sum of GTIs [s]
			ontime6	8955.9000688791	Sum of GTIs [s]
			l1events	368724	Number of level 1 events

2.1.4 Events

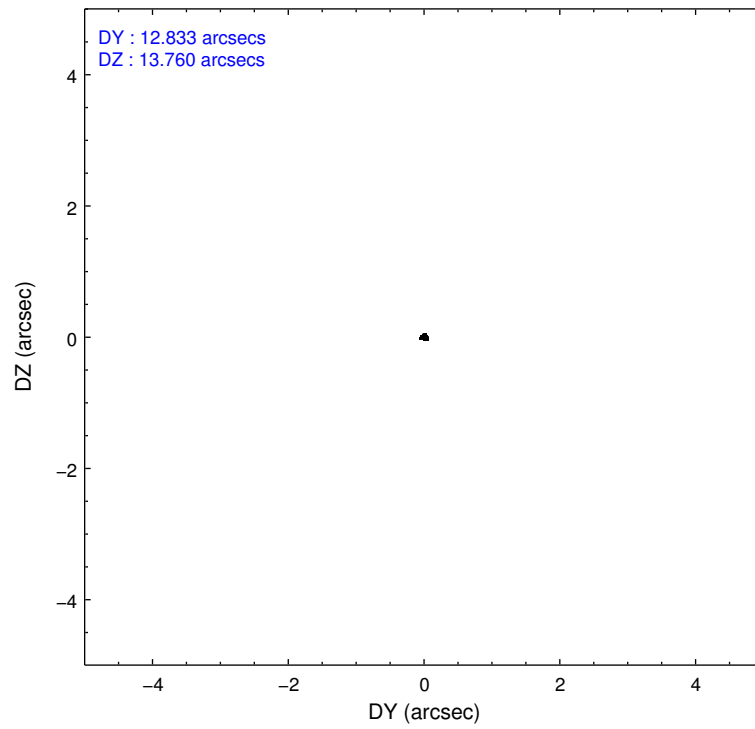
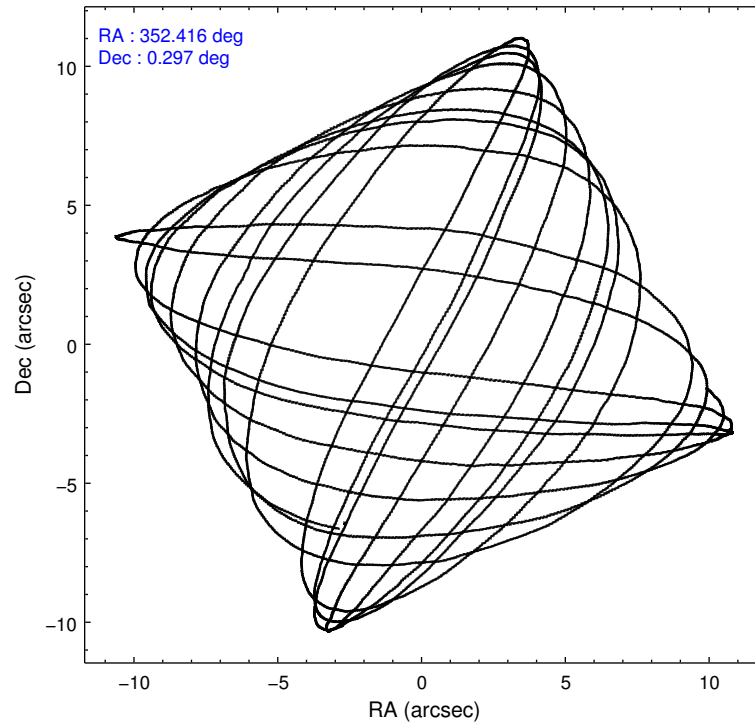
	ccd 0	ccd 1	ccd 2	ccd 3	ccd 6
level 1 events	71346	68911	81436	73375	73656
rejected events	64089	60702	74228	66530	66189
rejected %	89%	88%	91%	90%	89%

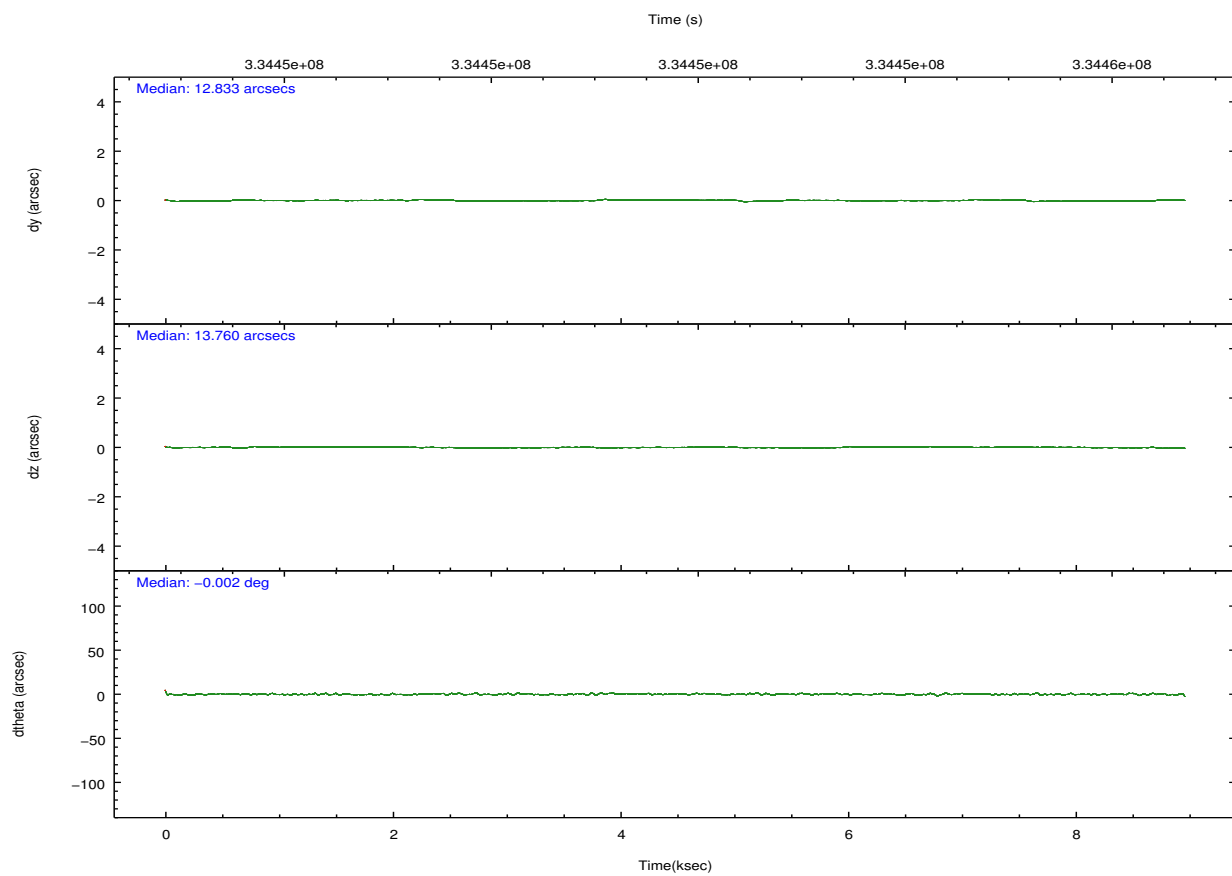
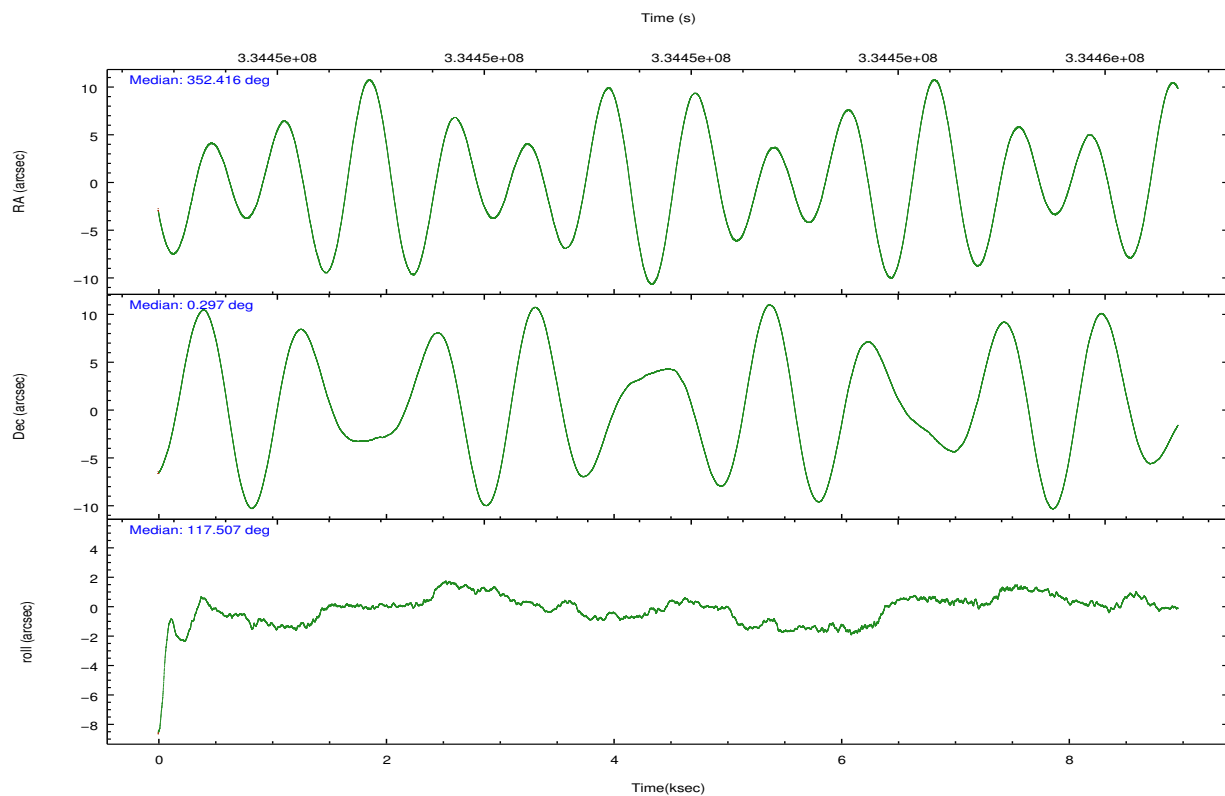
	ccd 0	ccd 1	ccd 2	ccd 3	ccd 6
grade 0 events	2493	2945	2663	2441	2490
	3%	4%	3%	3%	3%
grade 1 events	34	41	41	46	44
	0%	0%	0%	0%	0%
grade 2 events	1876	1918	1759	1599	1735
	2%	2%	2%	2%	2%
grade 3 events	792	909	745	749	853
	1%	1%	0%	1%	1%
grade 4 events	769	944	773	759	811
	1%	1%	0%	1%	1%
grade 5 events	2691	2943	2547	3123	3028
	3%	4%	3%	4%	4%
grade 6 events	1485	1684	1409	1448	1725
	2%	2%	1%	1%	2%
grade 7 events	61206	57527	71499	63210	62970
	85%	83%	87%	86%	85%

2.2 Compared Parameters

Parameter	Planned	Actual	Parameter	Planned	Actual
Instrument	ACIS	ACIS	Obspar format version number	7	7
Detector	ACIS-01236	ACIS-01236	Obspar file type	PREDICTED	ACTUAL
Grating	NONE	NONE	Obspar update status	NONE	UPDATED
Data mode	VFAINT	VFAINT	CCD I0 on	Y	Y
Observation mode	POINTING	POINTING	CCD I1 on	Y	Y
[deg] Pointing RA	352.439436	352.4161558274217	CCD I2 on	Y	Y
[deg] Pointing Dec	0.282455	0.2971228823485963	CCD I3 on	Y	Y
[deg] Pointing Roll	117.299919	117.5087225260744	CCD S0 on	N	N
[mm] SIM focus pos	-0.782348	-0.7809083437167272	CCD S1 on	N	N
[mm] SIM defocus	0	0.001439871863259334	CCD S2 on	O1	Y
[mm] SIM translation stage pos	-233.592463	-233.5874344608287	CCD S3 on	N	N
[mm] SIM translation stage offset	0	-0.005018542100998502	CCD S4 on	N	N
[s] Observation start time (MET)	334447480.184000	334447103.99929	CCD S5 on	N	N
Observation start date	2008-08-06T22:03:35	2008-08-06T21:58:23	Number of optional ACIS chips dropped	0	0
[s] Observation end time (MET)	334456251.184000	334457604.09981	On-chip summing requested	N	N
Observation end date	2008-08-07T00:29:46	2008-08-07T00:53:24	Subarray requested	NONE	NONE
Read mode	TIMED	TIMED	Alternating exposures requested	N	N
			[s] Primary exposure time	0.000000	3.1

2.3 Aspect



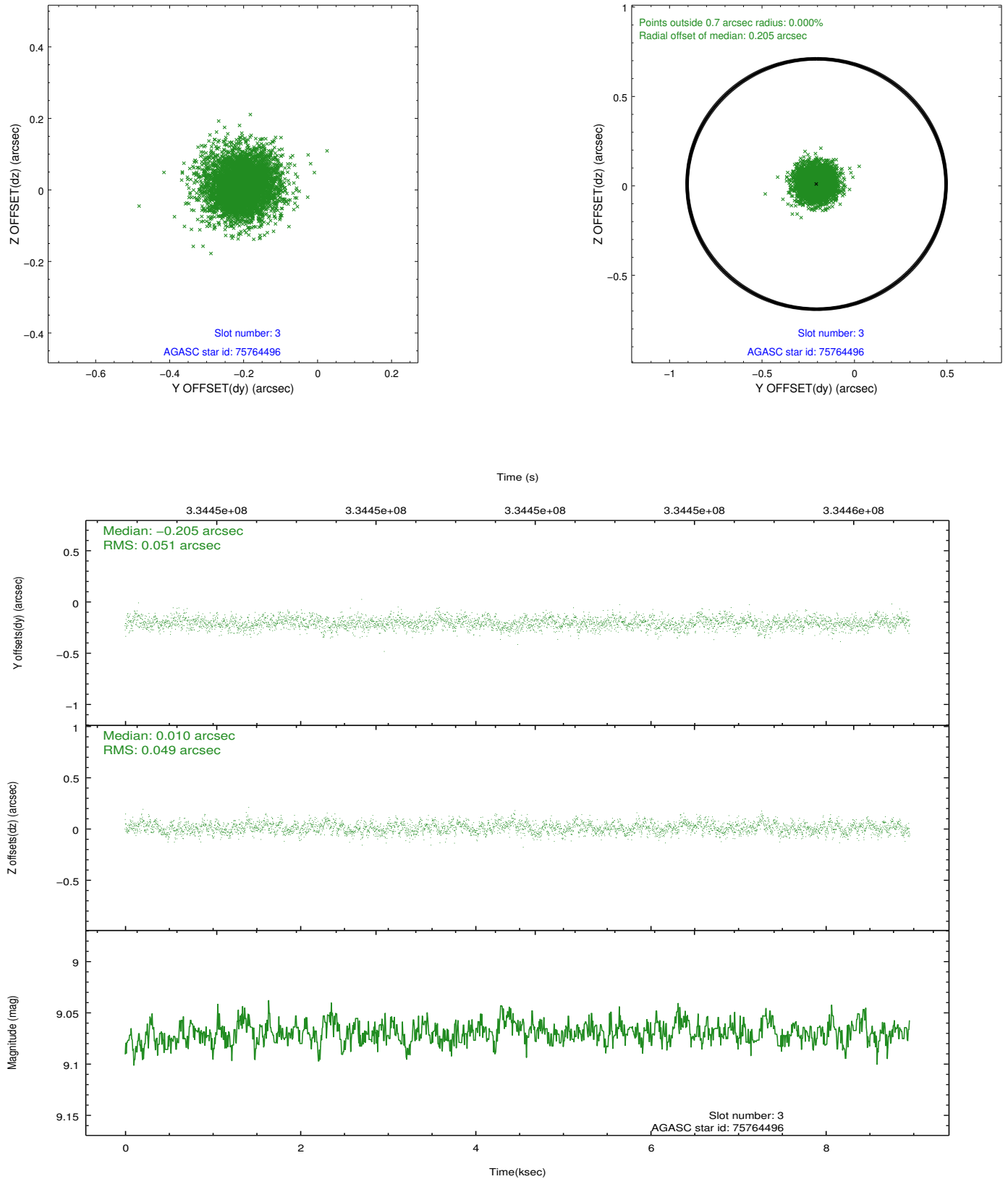


Slot Statistics

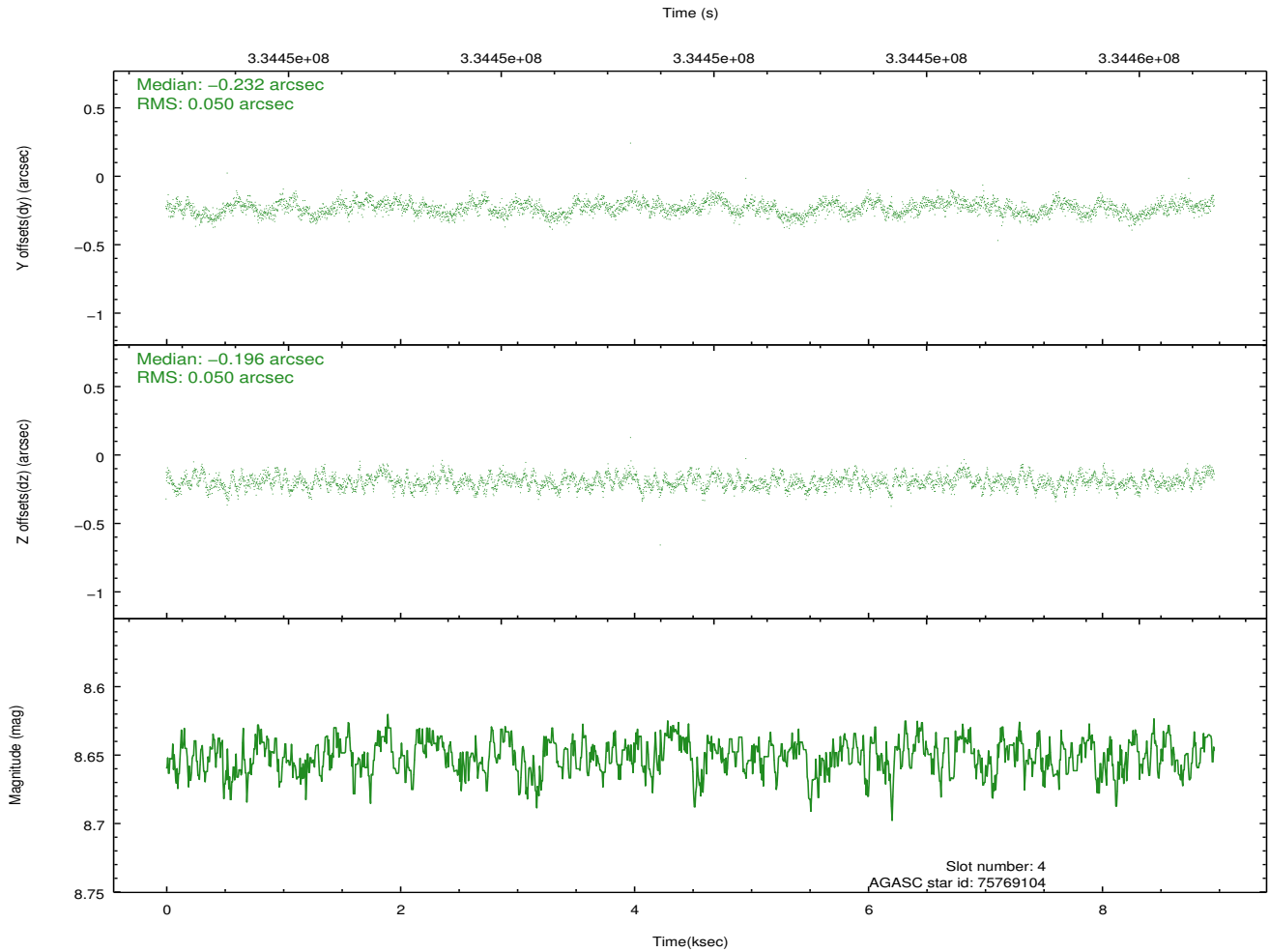
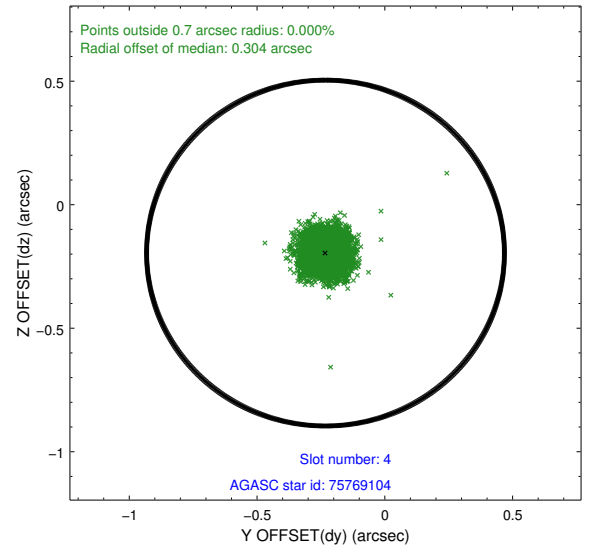
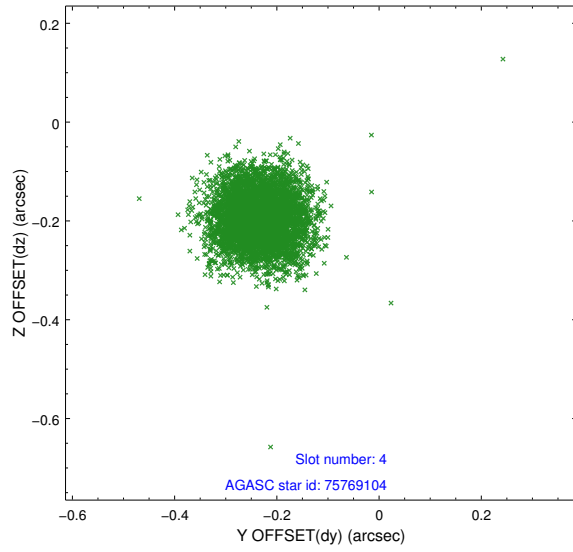
slot	status	id	mag	n_pts	med_dy	med_dz	dr1	dr2	ra	dec	mean_y	mean_z
0	FID	ACIS-I-1	7.07	2186	-0.035	0.049	0.008	0.014	0.000000	0.000000	926.66	-837.27
1	FID	ACIS-I-4	7.00	2186	0.152	0.007	0.007	0.012	0.000000	0.000000	2147.22	1062.18
2	FID	ACIS-I-5	7.05	2186	-0.216	0.016	0.006	0.012	0.000000	0.000000	-1820.75	1060.73
3	GUIDE	75764496	9.07	4366	-0.205	0.010	0.074	0.123	351.852841	0.722290	2375.48	1150.45
4	GUIDE	75769104	8.65	4372	-0.232	-0.196	0.075	0.117	351.845083	0.370778	1264.25	1755.89
5	GUIDE	76678536	8.90	4369	0.110	0.383	0.081	0.131	353.237558	0.180446	-1643.65	-2384.22
6	GUIDE	687347656	9.57	4360	0.149	-0.166	0.099	0.166	352.228641	-0.041094	-687.04	1208.15
7	GUIDE	688265896	9.15	4361	0.179	-0.031	0.079	0.129	352.587516	-0.177872	-1717.07	286.57

2.4 Star Slots

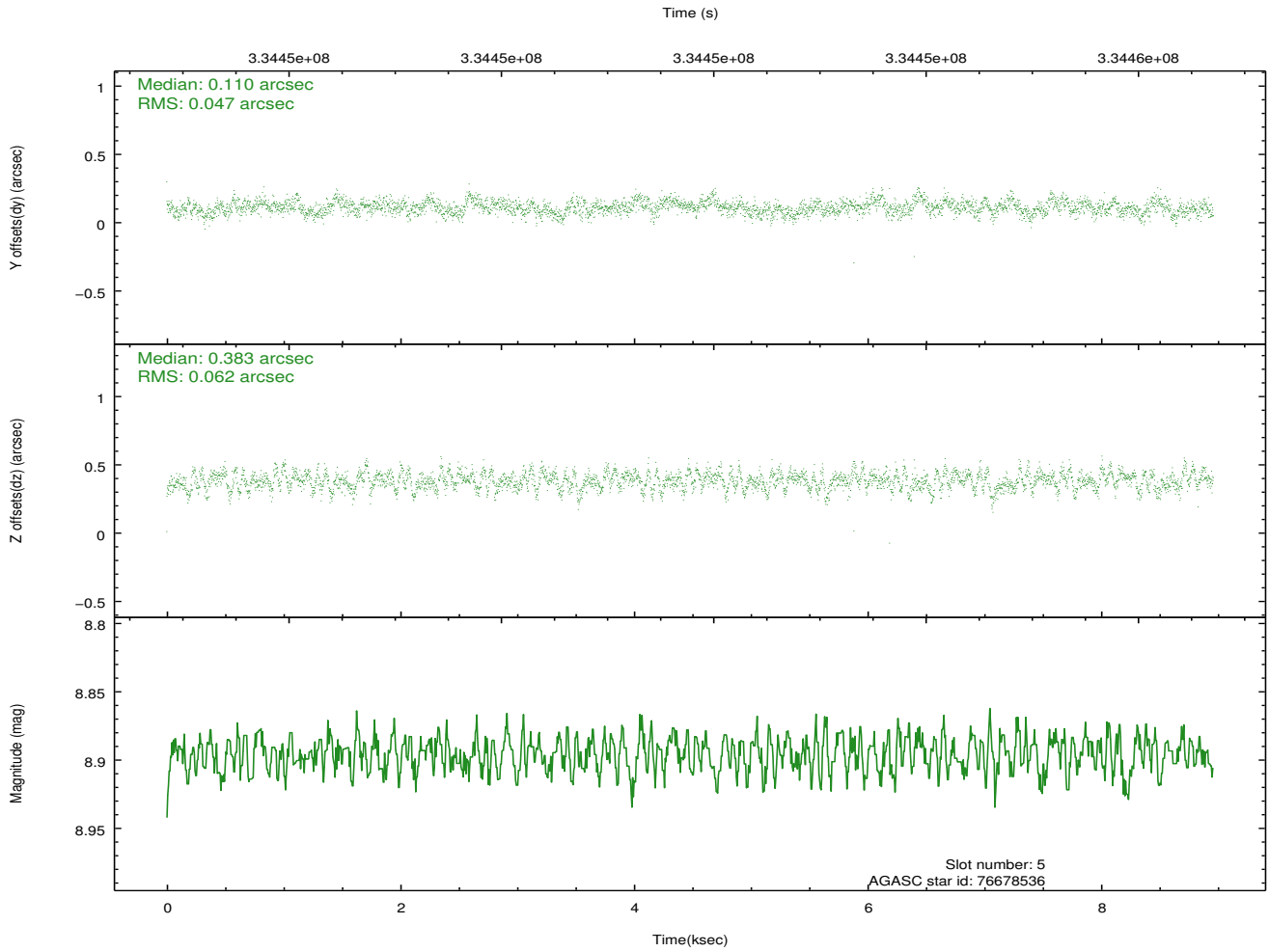
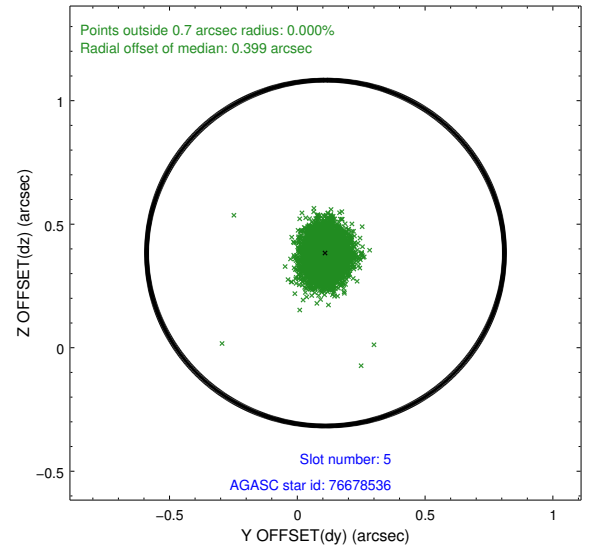
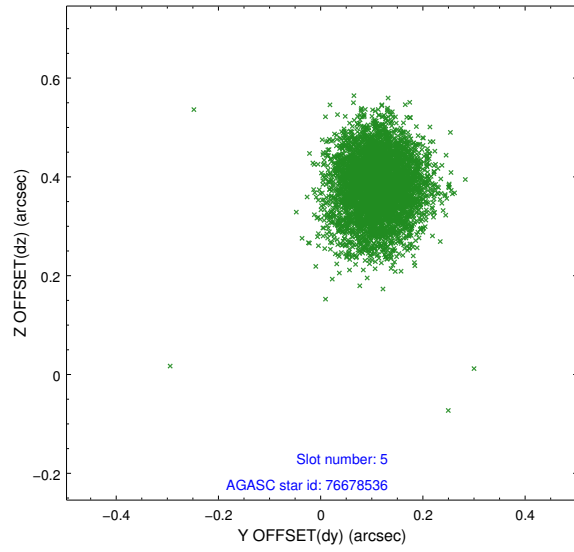
2.4.1 Slot 3



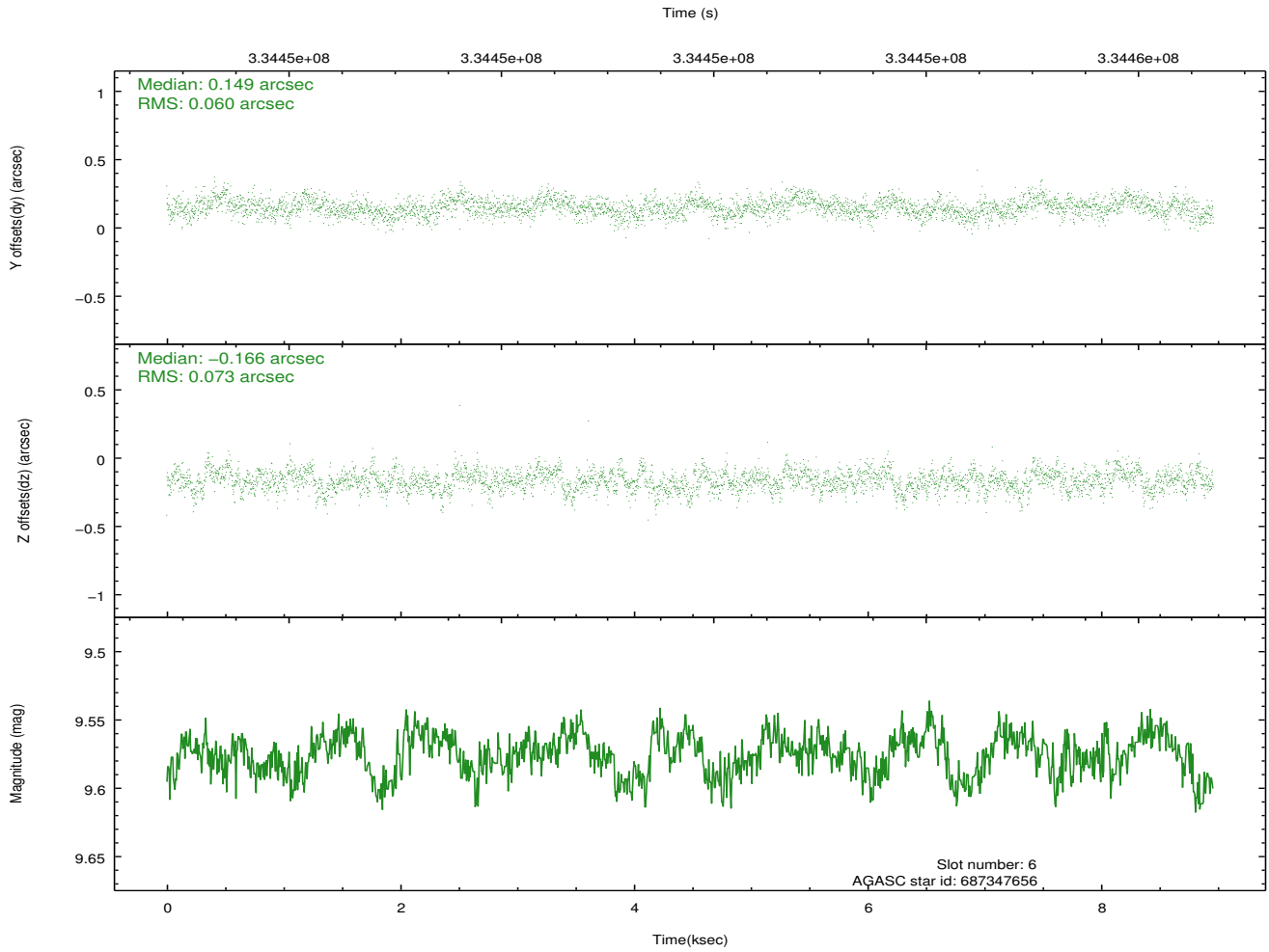
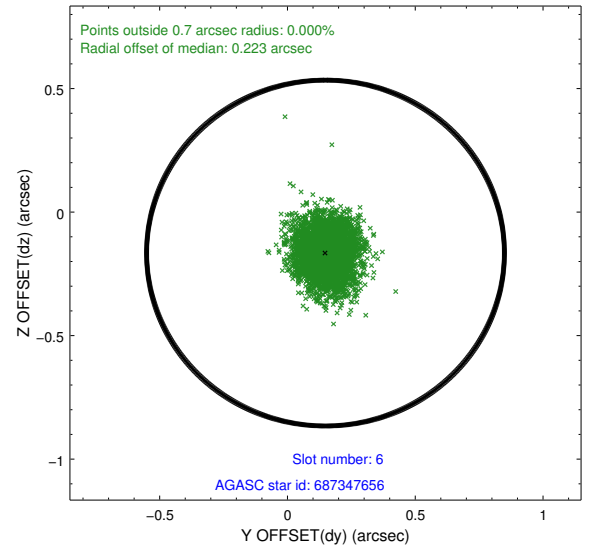
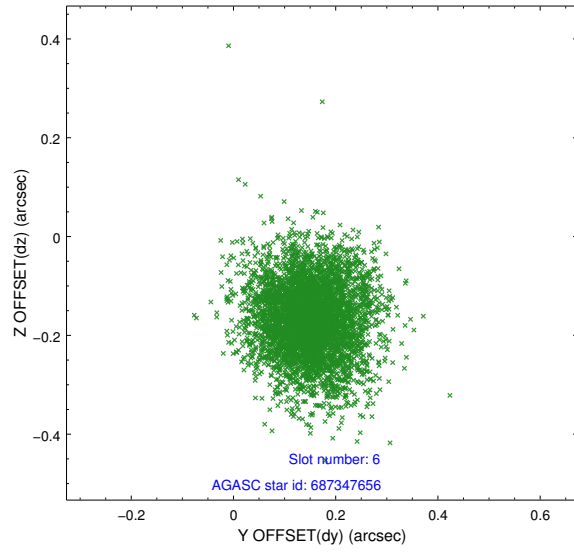
2.4.2 Slot 4



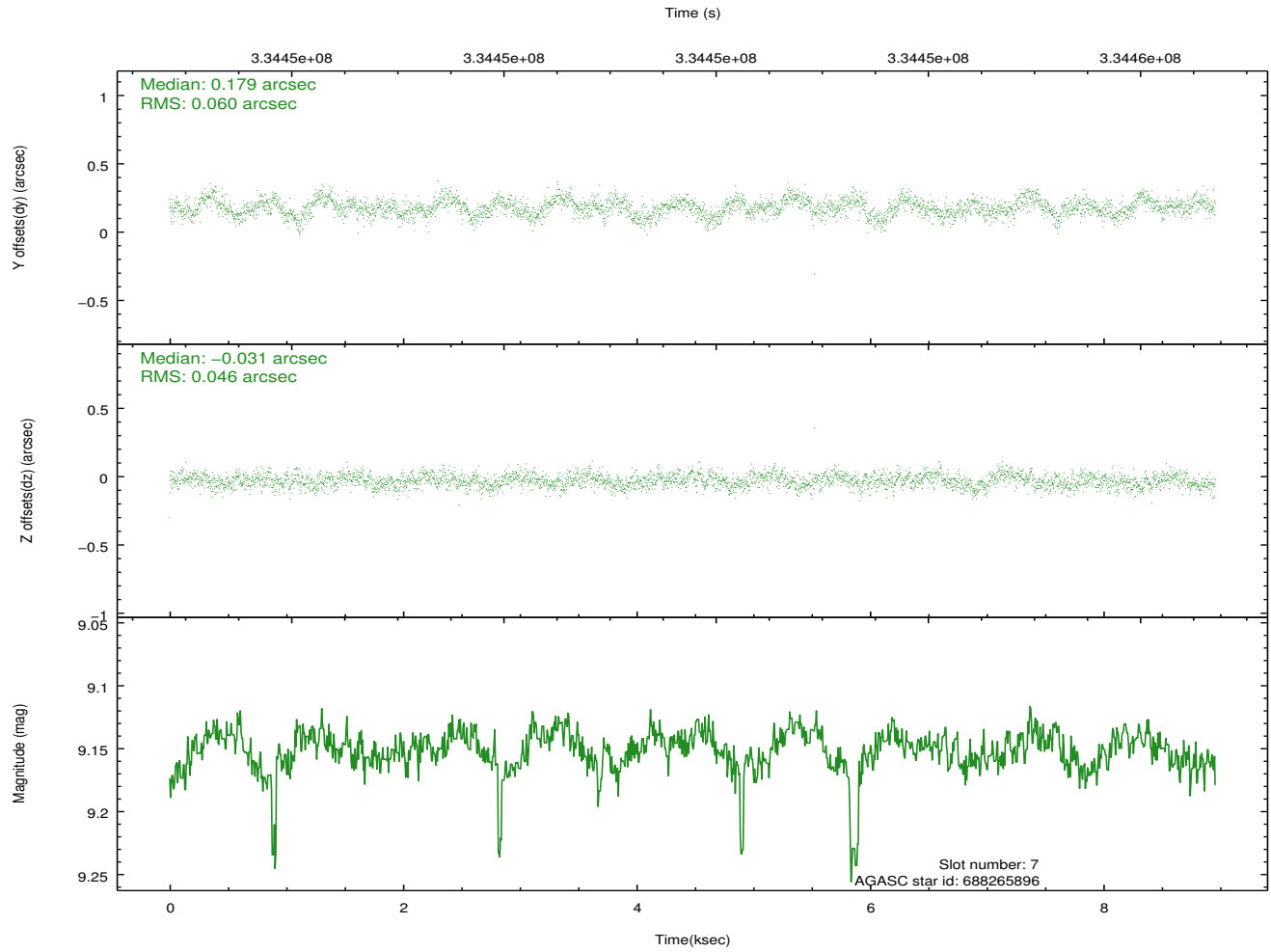
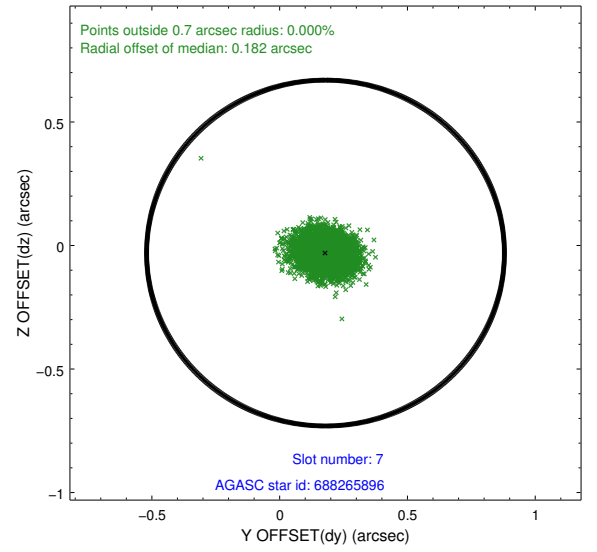
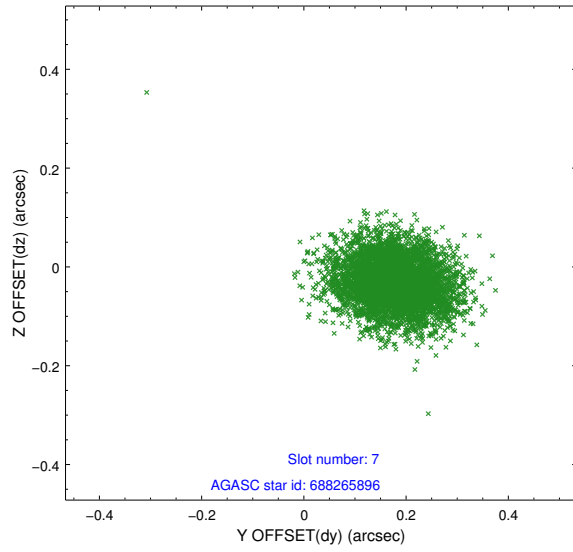
2.4.3 Slot 5



2.4.4 Slot 6

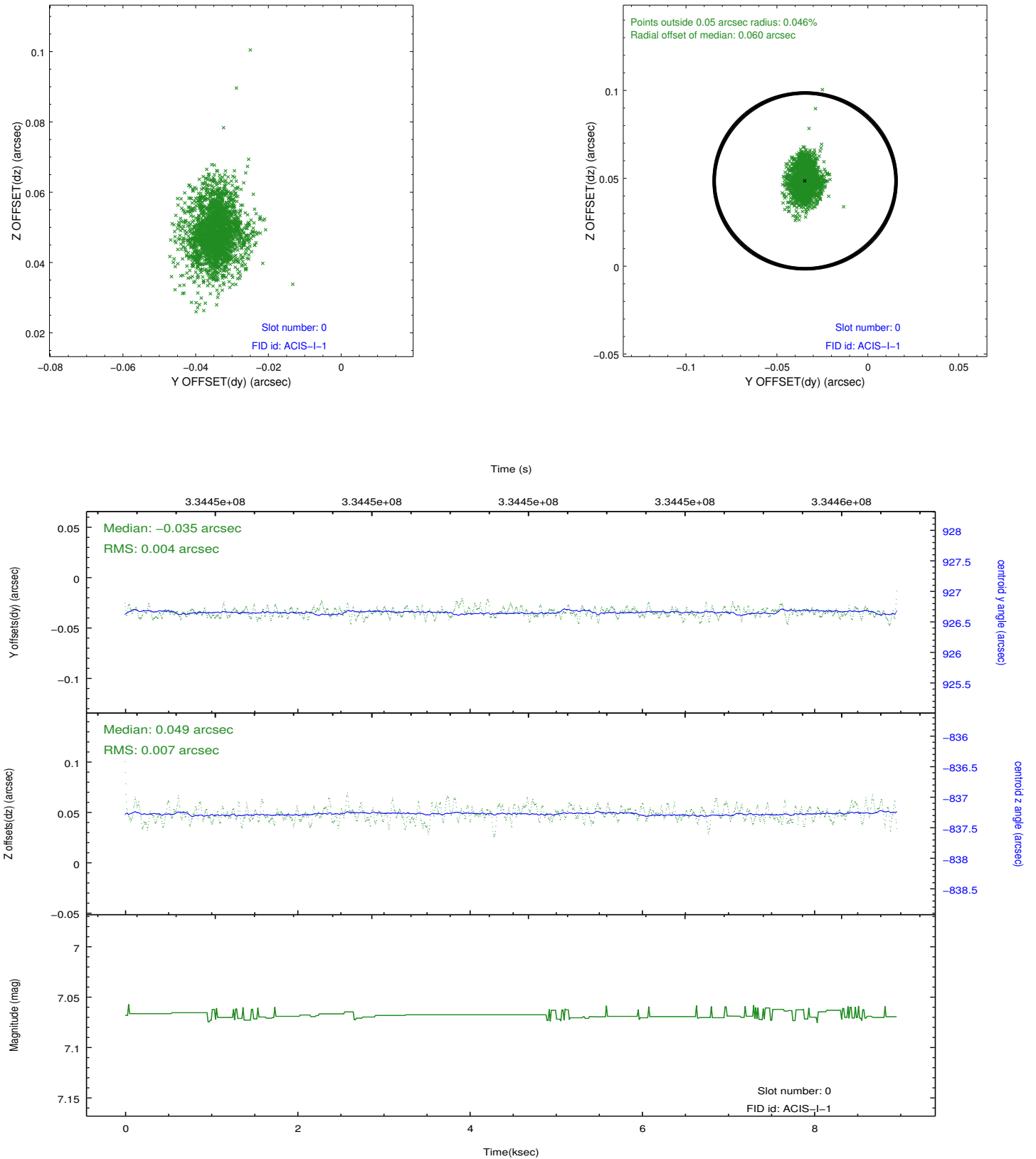


2.4.5 Slot 7

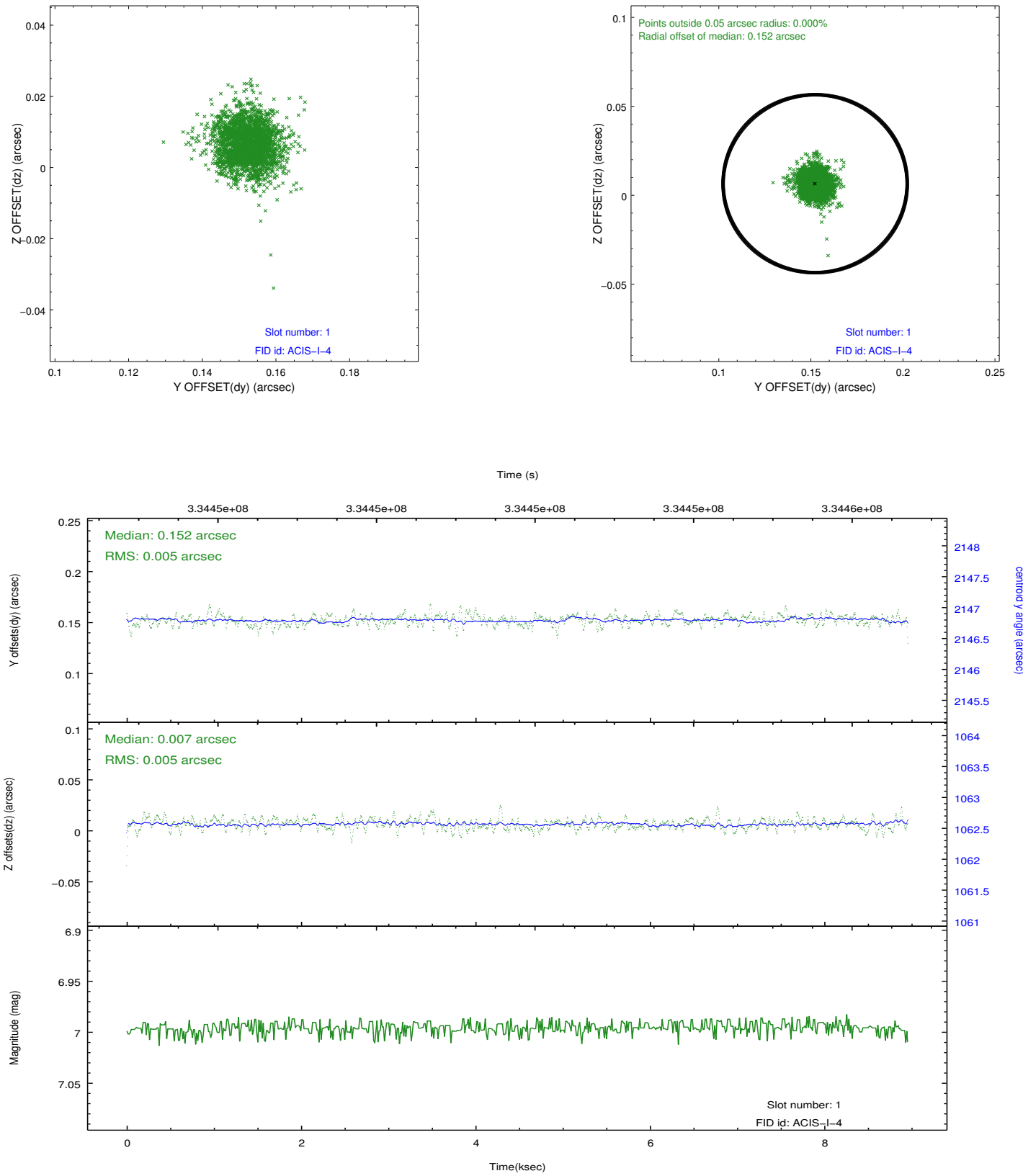


2.5 FID Slots

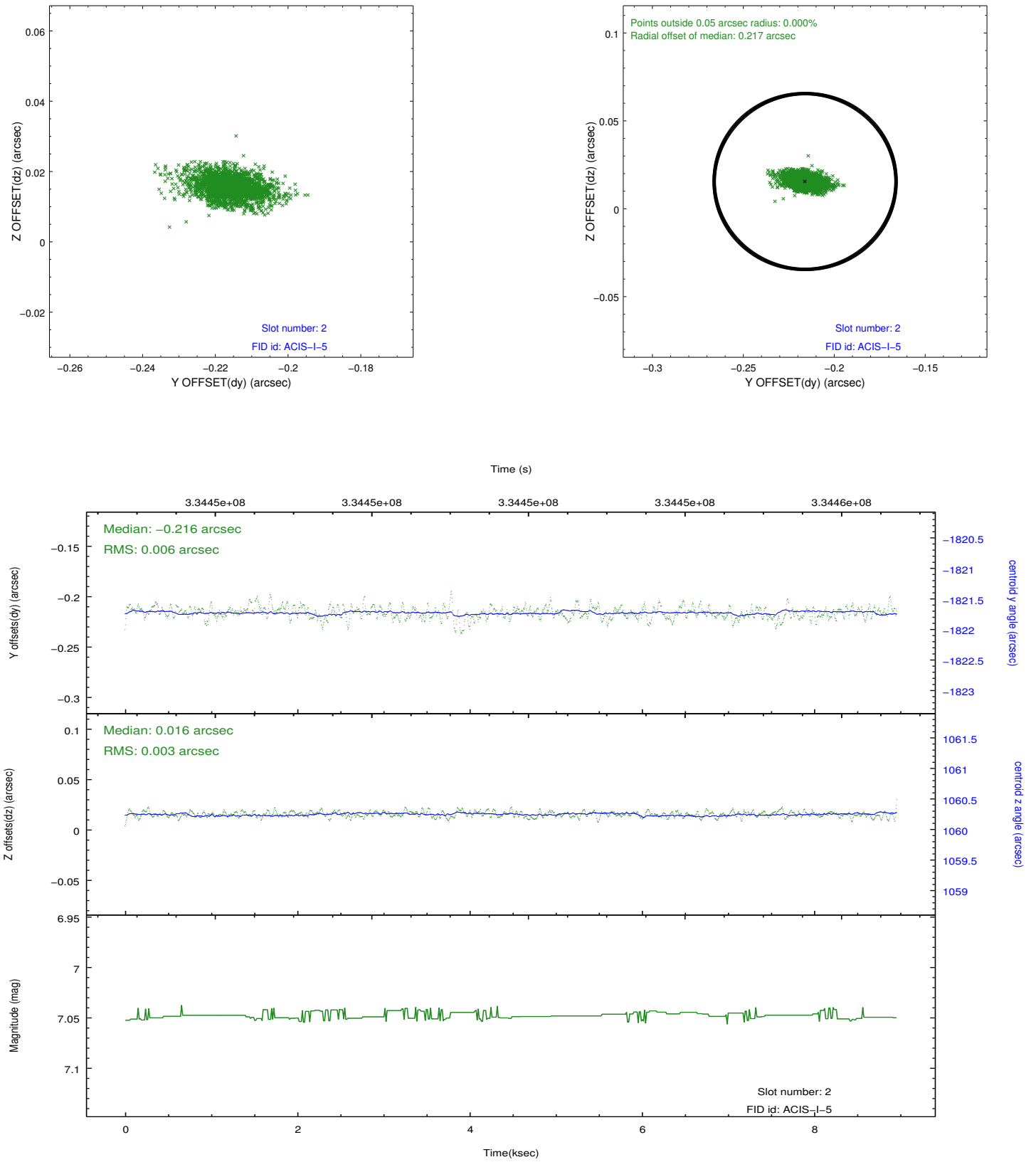
2.5.1 Slot 0



2.5.2 Slot 1



2.5.3 Slot 2



A Summary

A.1 Status

V&V Scientist	Beth Sundheim
V&V Date (YYYY-MM-DD)	2012.05.27
V&V Edition	1
V&V Disposition and Status	OK
V&V Charge Time	8.95590006

A.2 Comments